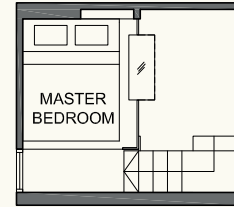
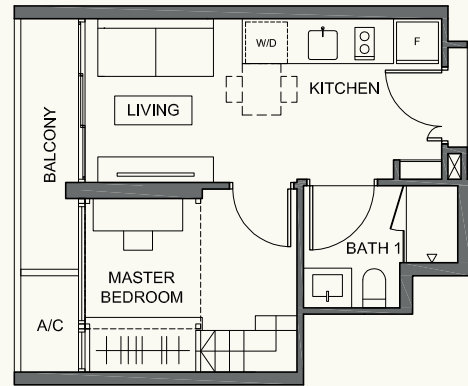
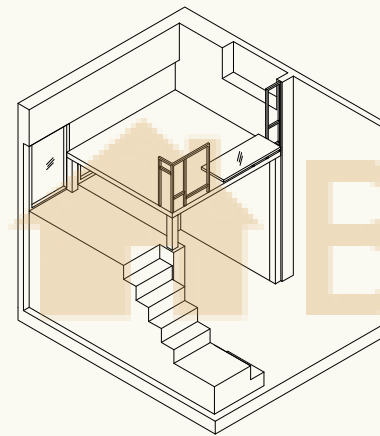


Type A 1 Bedroom

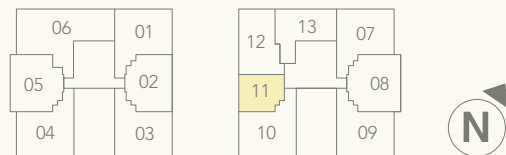
36 sq m / 388 sq ft
#02-11 to #05-11



Furniture Deck



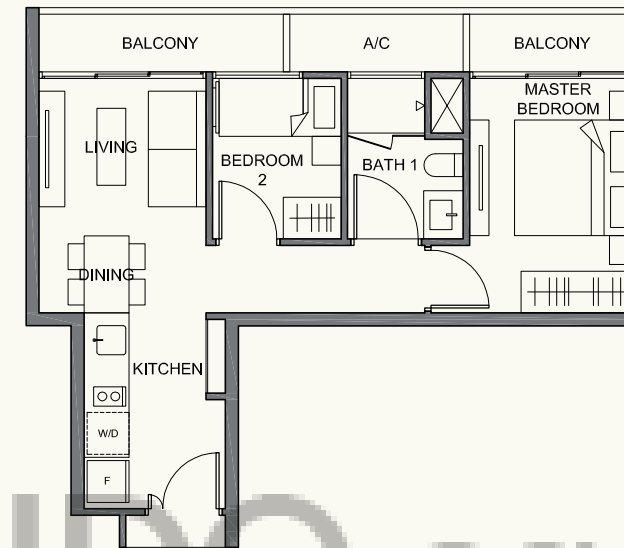
Isometric



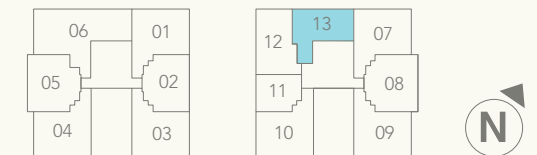
Floor areas are inclusive of balconies, roof terraces, aircon ledges and voids. Floor areas are approximate measurements and subject to final survey. The plans are subject to changes as required or approved by relevant authorities. The balcony shall not be enclosed unless with the approved balcony screen. For an illustration of the approved balcony screen, please refer to page 47 of this brochure.

Type B1 2 Bedroom Compact

54 sq m / 581 sq ft
#02-13 to #05-13



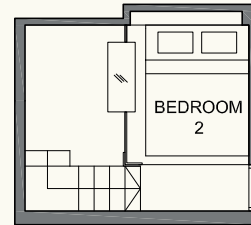
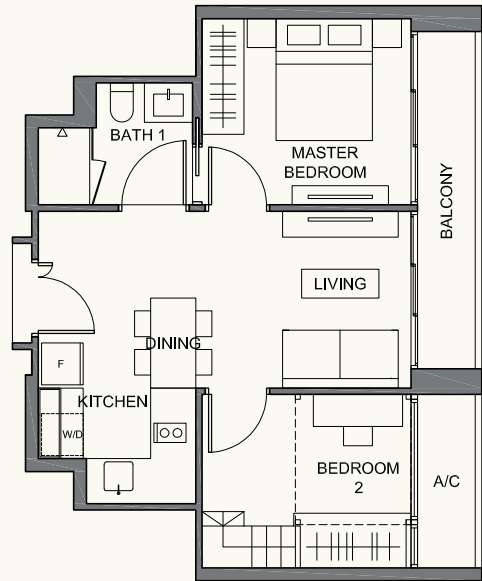
BUYCONDO.sg



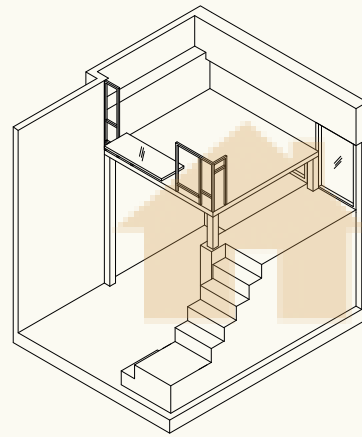
Floor areas are inclusive of balconies, roof terraces, aircon ledges and voids. Floor areas are approximate measurements and subject to final survey. The plans are subject to changes as required or approved by relevant authorities. The balcony shall not be enclosed unless with the approved balcony screen. For an illustration of the approved balcony screen, please refer to page 47 of this brochure.

Type B2 2 Bedroom Compact

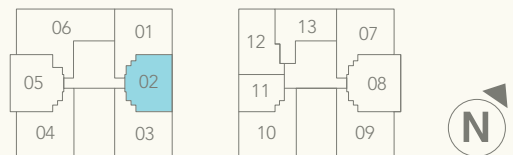
55 sq m / 592 sq ft
#02-02 to #05-02



Furniture Deck



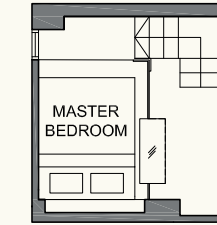
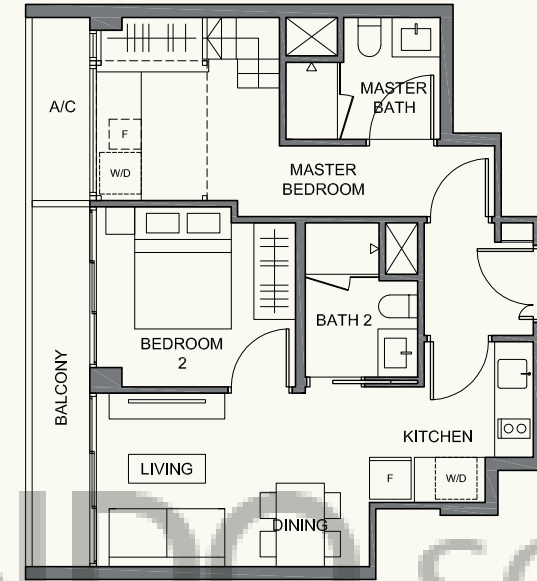
Isometric



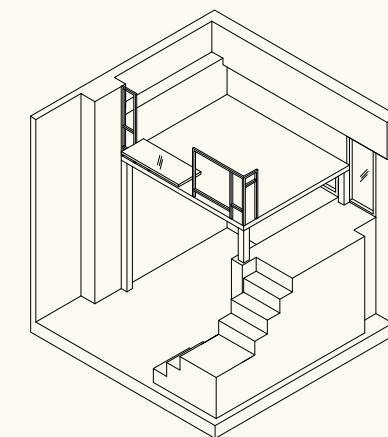
Floor areas are inclusive of balconies, roof terraces, aircon ledges and voids. Floor areas are approximate measurements and subject to final survey. The plans are subject to changes as required or approved by relevant authorities. The balcony shall not be enclosed unless with the approved balcony screen. For an illustration of the approved balcony screen, please refer to page 47 of this brochure.

Type B3 2 Bedroom Dual Key

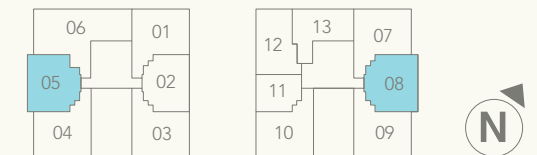
62 sq m / 667 sq ft
#02-05 to #04-05
#02-08 to #04-08 (mirror)



Furniture Deck



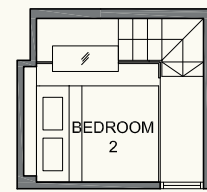
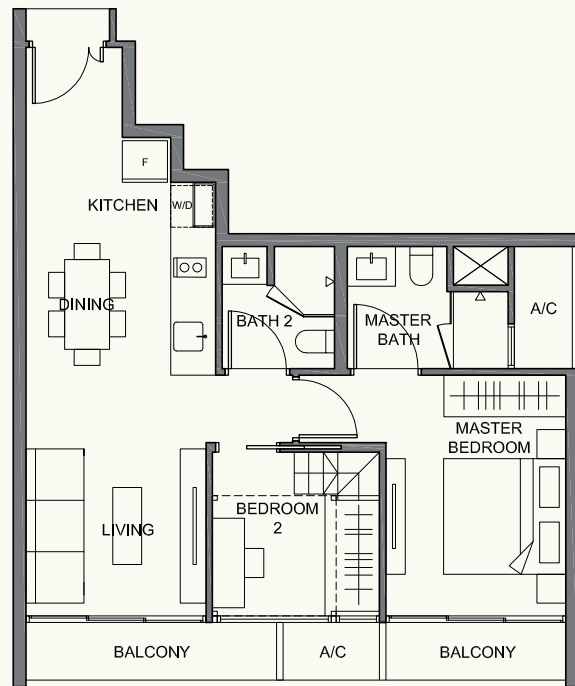
Isometric



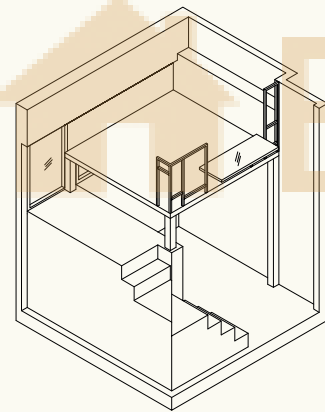
Floor areas are inclusive of balconies, roof terraces, aircon ledges and voids. Floor areas are approximate measurements and subject to final survey. The plans are subject to changes as required or approved by relevant authorities. The balcony shall not be enclosed unless with the approved balcony screen. For an illustration of the approved balcony screen, please refer to page 47 of this brochure.

Type B4 2 Bedroom

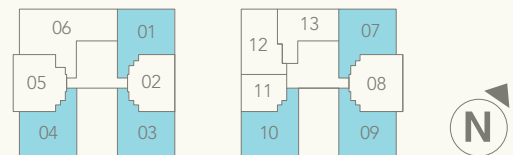
67 sq m / 721 sq ft
 #02-01 to #04-01 (mirror)
 #02-03 to #04-03
 #02-04 to #04-04 (mirror)
 #02-07 to #04-07 (mirror)
 #02-09 to #04-09
 #02-10 to #04-10 (mirror)



Furniture Deck



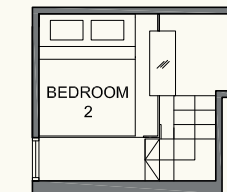
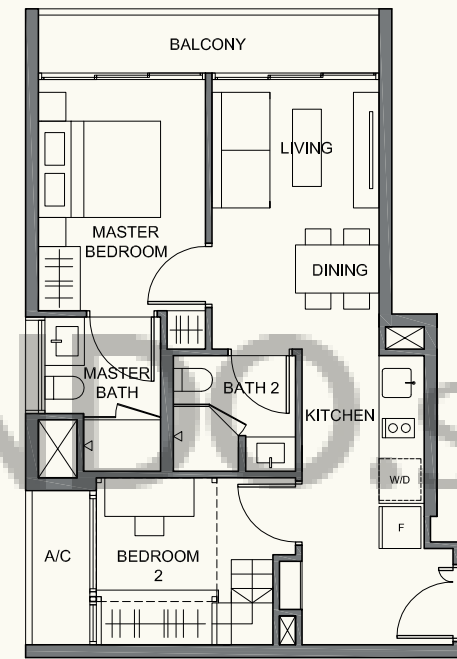
Isometric



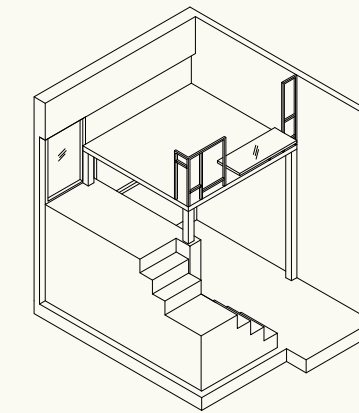
Floor areas are inclusive of balconies, roof terraces, aircon ledges and voids. Floor areas are approximate measurements and subject to final survey. The plans are subject to changes as required or approved by relevant authorities. The balcony shall not be enclosed unless with the approved balcony screen. For an illustration of the approved balcony screen, please refer to page 47 of this brochure.

Type B5 2 Bedroom

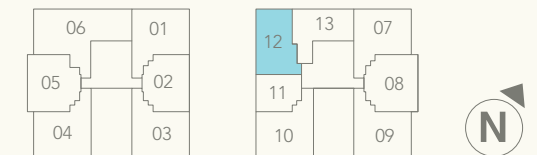
58 sq m / 624 sq ft
 #02-12 to #04-12



Furniture Deck



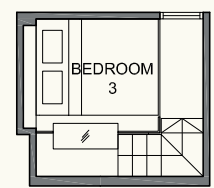
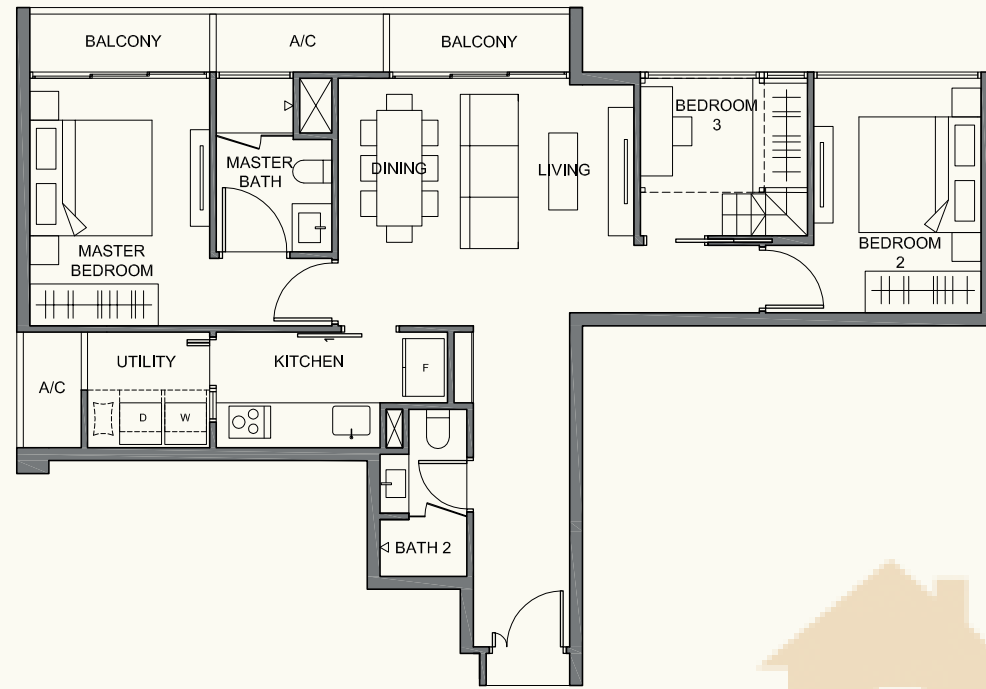
Isometric



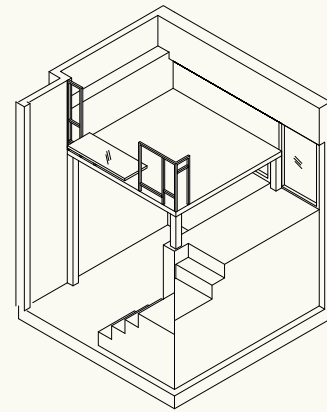
Floor areas are inclusive of balconies, roof terraces, aircon ledges and voids. Floor areas are approximate measurements and subject to final survey. The plans are subject to changes as required or approved by relevant authorities. The balcony shall not be enclosed unless with the approved balcony screen. For an illustration of the approved balcony screen, please refer to page 47 of this brochure.

Type C 3 Bedroom

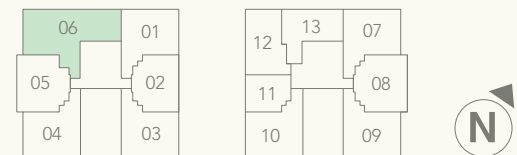
92 sq m / 990 sq ft
#02-06 to #04-06



Furniture Deck



Isometric

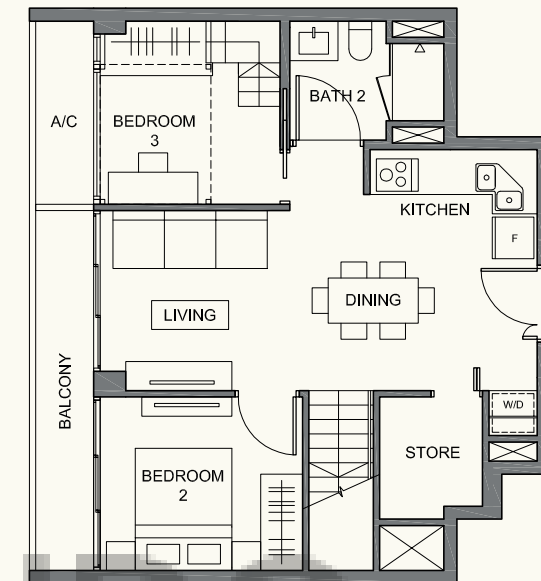


Floor areas are inclusive of balconies, roof terraces, aircon ledges and voids. Floor areas are approximate measurements and subject to final survey. The plans are subject to changes as required or approved by relevant authorities. The balcony shall not be enclosed unless with the approved balcony screen. For an illustration of the approved balcony screen, please refer to page 47 of this brochure.

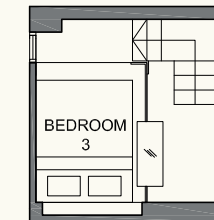
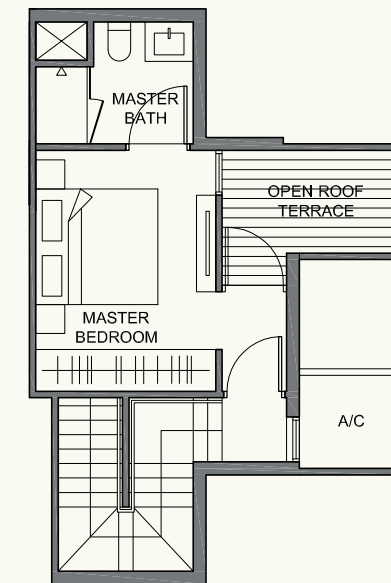
Type B3P 3 Bedroom Penthouse

94 sq m / 1012 sq ft
#05-05
#05-08 (mirror)

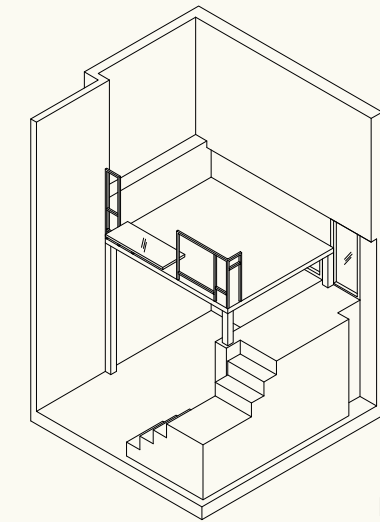
5th storey



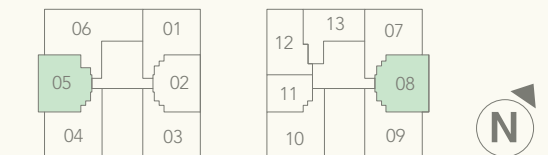
Attic



Furniture Deck



Isometric



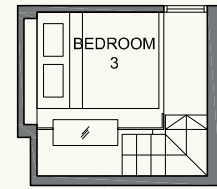
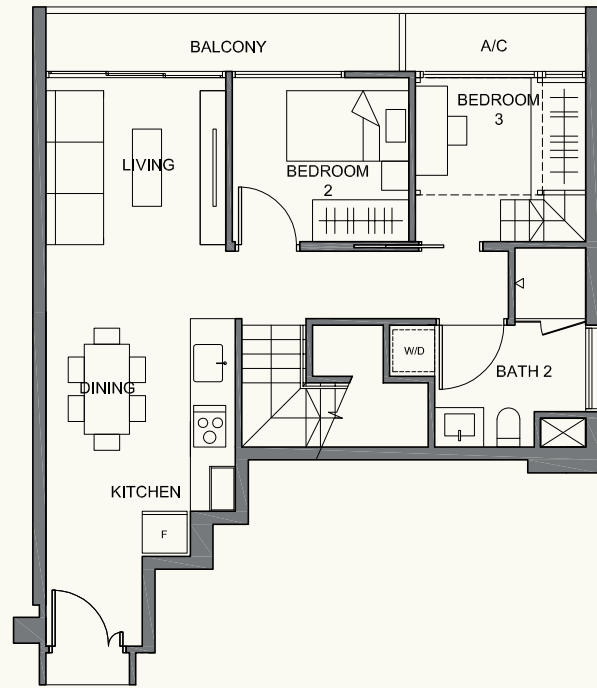
Floor areas are inclusive of balconies, roof terraces, aircon ledges and voids. Floor areas are approximate measurements and subject to final survey. The plans are subject to changes as required or approved by relevant authorities. The balcony shall not be enclosed unless with the approved balcony screen. For an illustration of the approved balcony screen, please refer to page 47 of this brochure.

Type B4P 3 Bedroom Penthouse

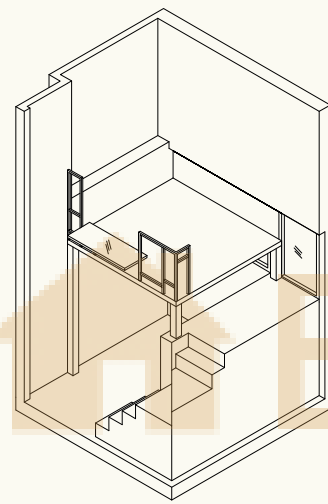
106 sq m / 1141 sq ft
 #05-01
 #05-07

105 sq m / 1130 sq ft
 #05-03
 #05-04 (mirror)
 #05-09
 #05-10 (mirror)

5th storey

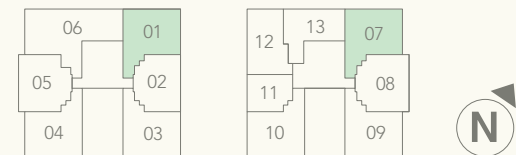
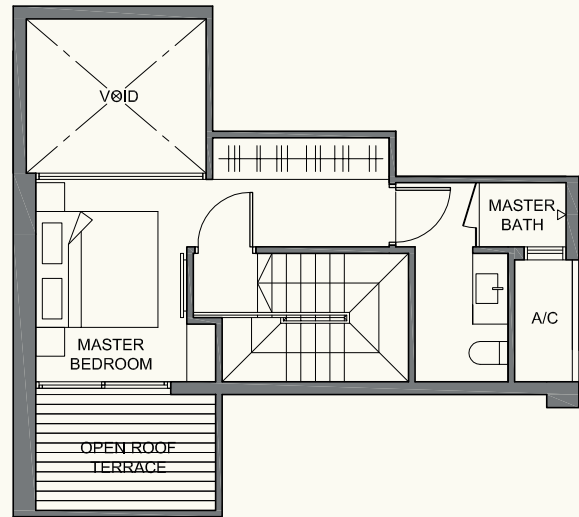


Furniture Deck



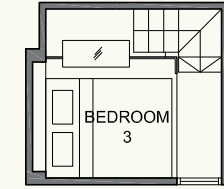
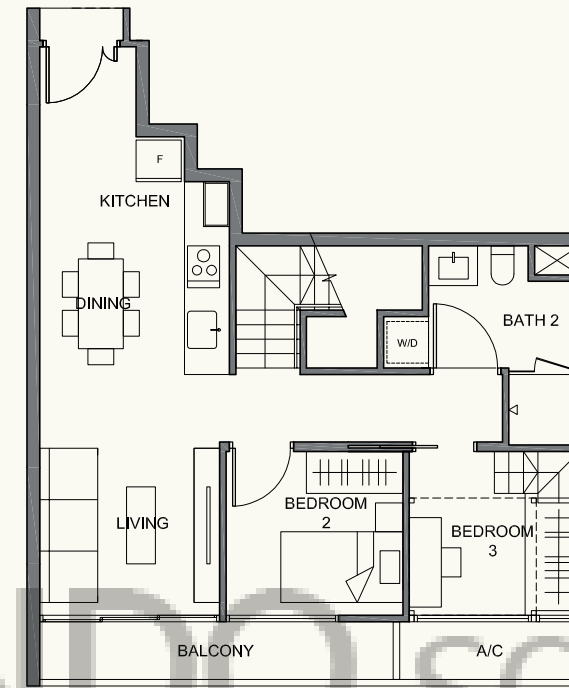
Isometric

Attic

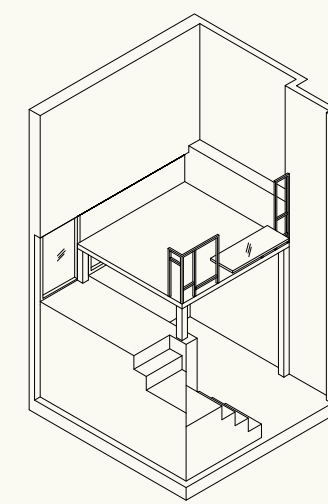


Floor areas are inclusive of balconies, roof terraces, aircon ledges and voids. Floor areas are approximate measurements and subject to final survey. The plans are subject to changes as required or approved by relevant authorities. The balcony shall not be enclosed unless with the approved balcony screen. For an illustration of the approved balcony screen, please refer to page 47 of this brochure.

5th storey

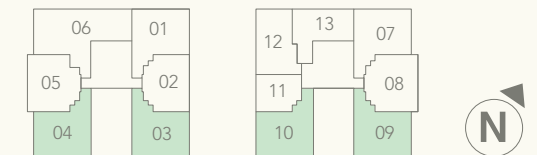
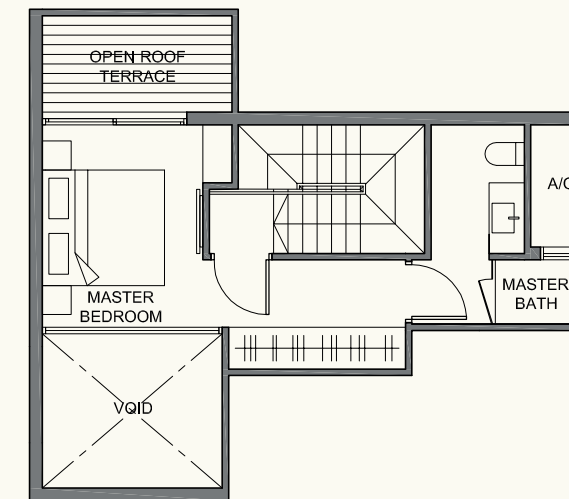


Furniture Deck



Isometric

Attic

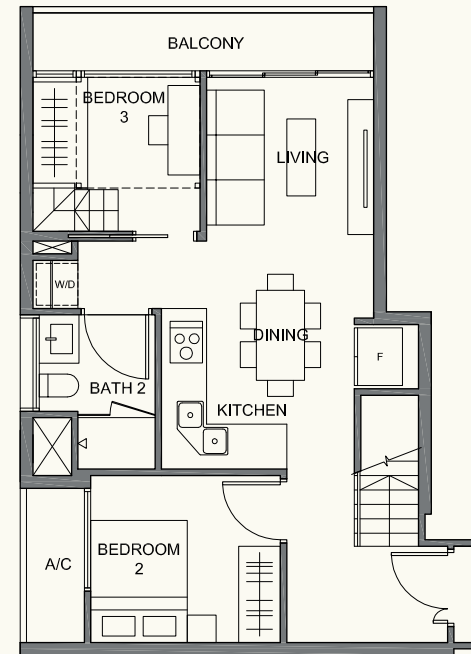


Floor areas are inclusive of balconies, roof terraces, aircon ledges and voids. Floor areas are approximate measurements and subject to final survey. The plans are subject to changes as required or approved by relevant authorities. The balcony shall not be enclosed unless with the approved balcony screen. For an illustration of the approved balcony screen, please refer to page 47 of this brochure.

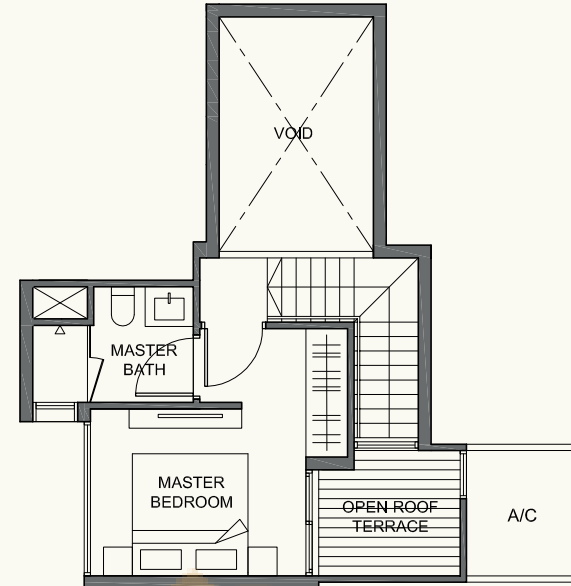
Type B5P 3 Bedroom Penthouse

99 sq m / 1066 sq ft
#05-12

5th storey



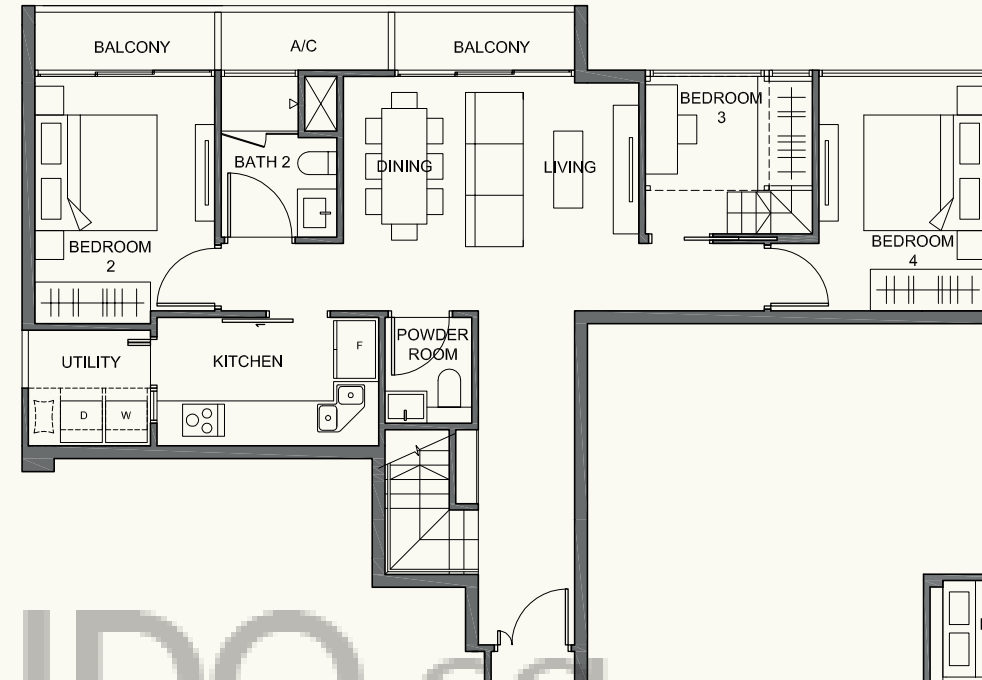
Attic



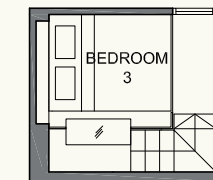
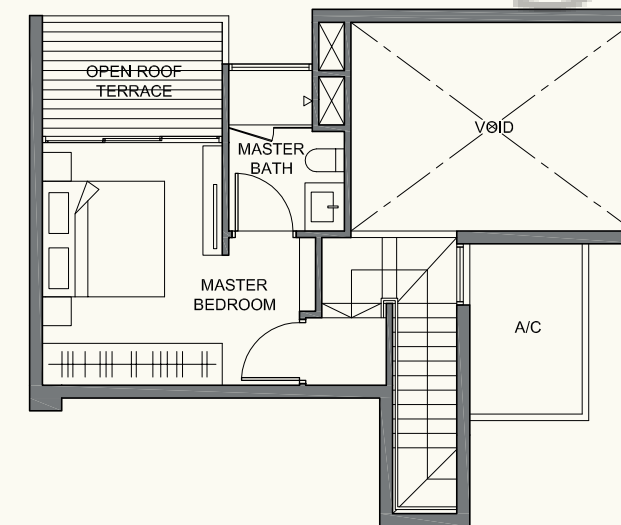
Type CP 4 Bedroom Penthouse

144 sq m / 1550 sq ft
#05-06

5th storey



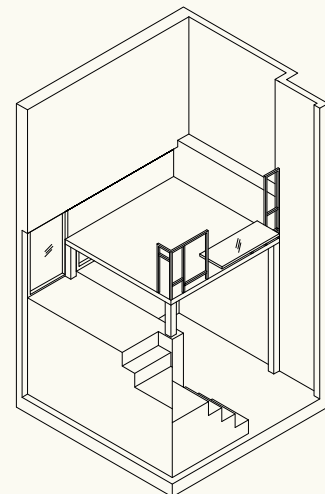
Attic



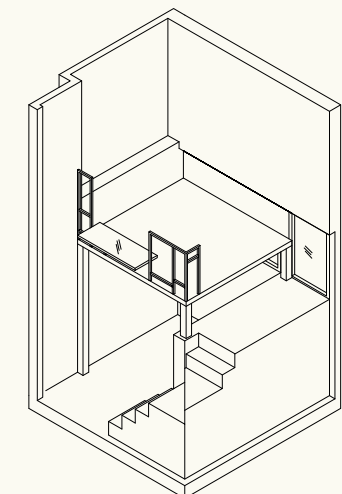
Furniture Deck



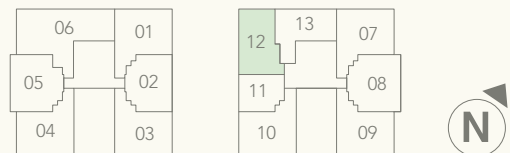
Furniture Deck



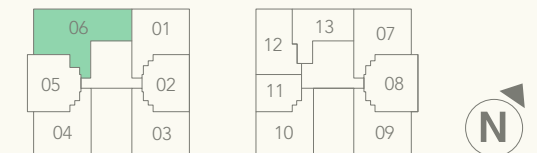
Isometric



Isometric



Floor areas are inclusive of balconies, roof terraces, aircon ledges and voids. Floor areas are approximate measurements and subject to final survey. The plans are subject to changes as required or approved by relevant authorities. The balcony shall not be enclosed unless with the approved balcony screen. For an illustration of the approved balcony screen, please refer to page 47 of this brochure.



Floor areas are inclusive of balconies, roof terraces, aircon ledges and voids. Floor areas are approximate measurements and subject to final survey. The plans are subject to changes as required or approved by relevant authorities. The balcony shall not be enclosed unless with the approved balcony screen. For an illustration of the approved balcony screen, please refer to page 47 of this brochure.