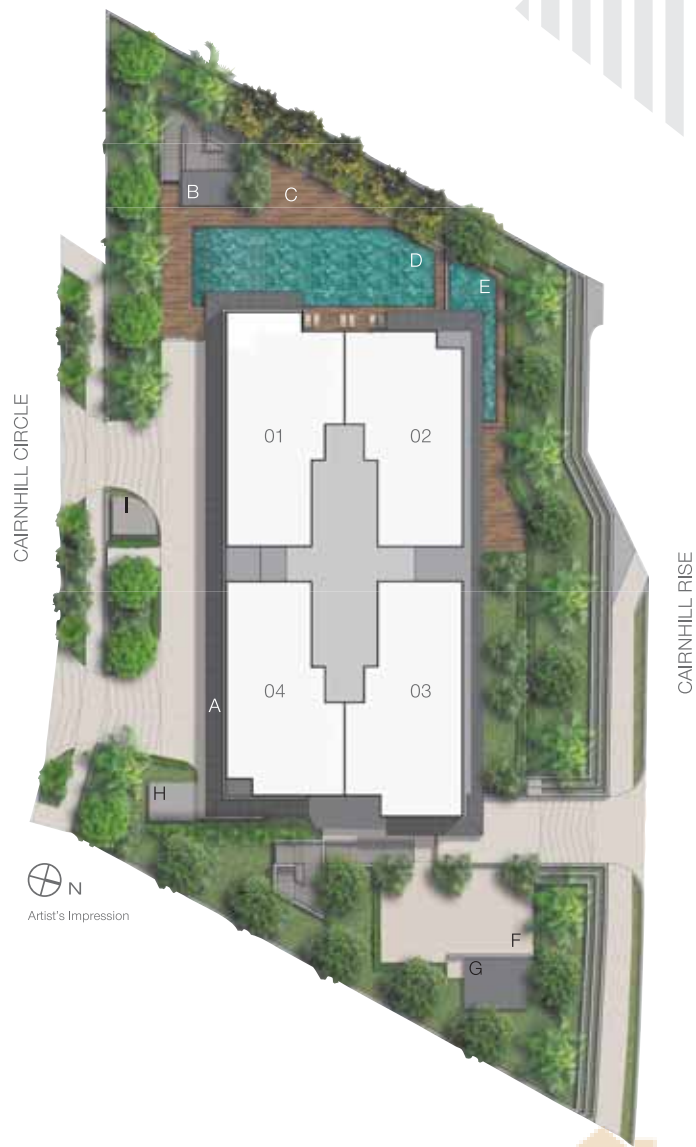


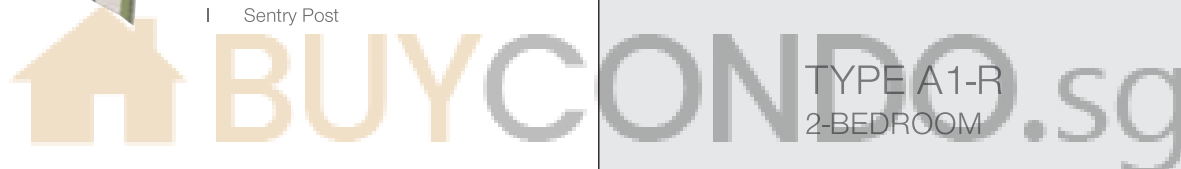
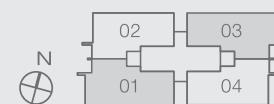
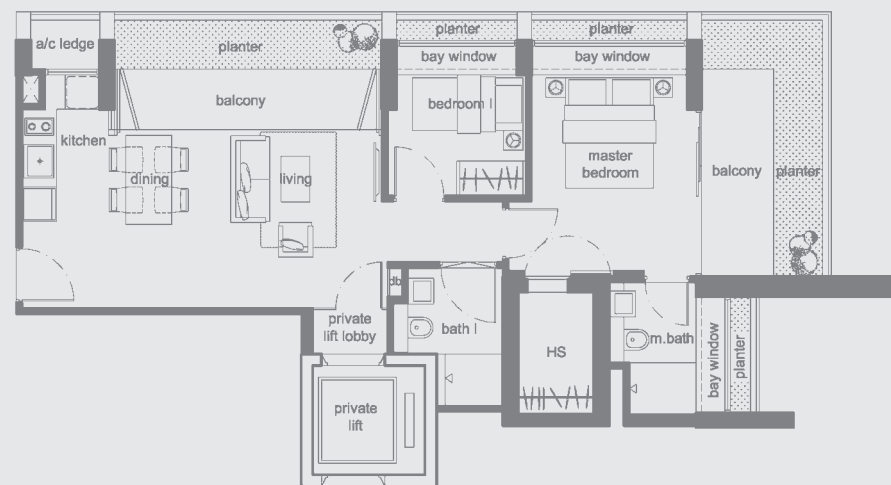
# SITEPLAN



- LEGEND:
- A Entrance Porch
  - B BBQ Pavilion
  - C Sun Deck
  - D Pool
  - E Jacuzzi
  - F Communal Area
  - G Generator
  - H Bin Center
  - I Sentry Post

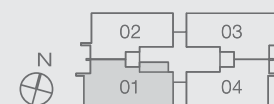
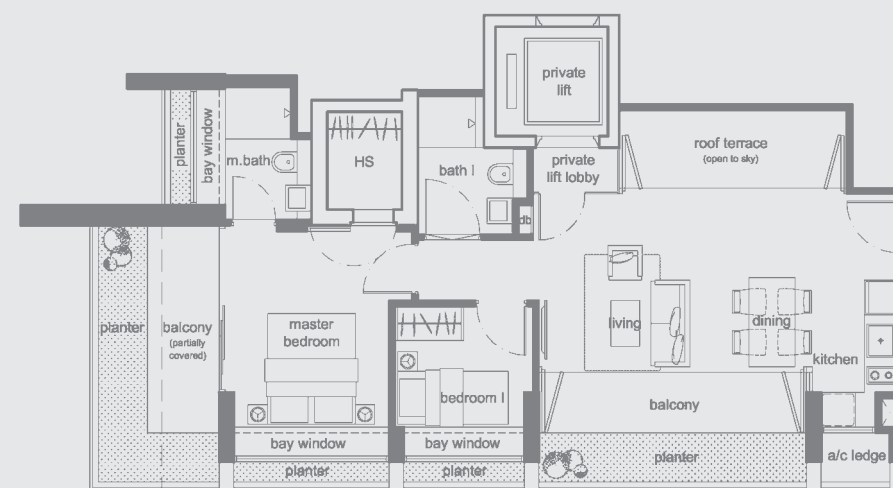
## TYPE A1 2-BEDROOM

UNIT #03-03 TO #13-03 & #15-03 TO #17-03  
 #03-01 TO #13-01 & #15-01 TO #17-01  
 AREA 84 SQM / 904 SQFT



## TYPE A1-R 2-BEDROOM

UNIT #18-01  
 AREA 90 SQM / 969 SQFT



## 14TH STOREY SKY TERRACE



- LEGEND:
- A Lift Lobby
  - B Gymnasium
  - C Lounge Deck
  - D Tranquil Garden



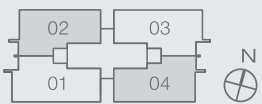
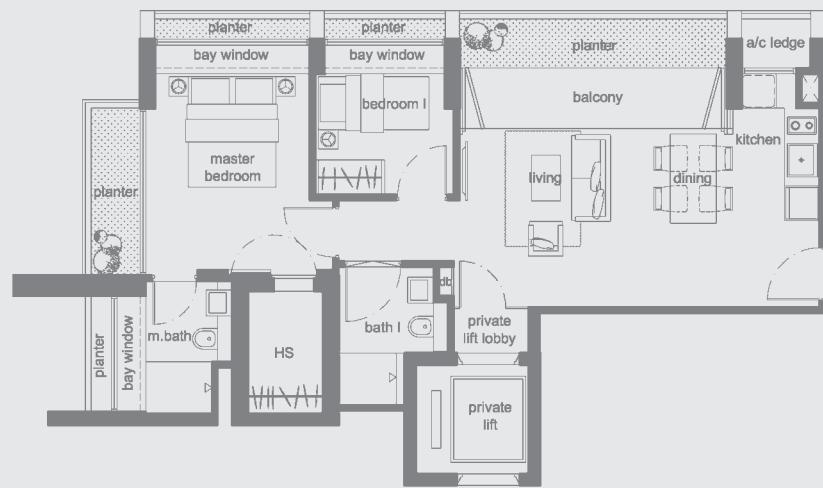
The above plans are subject to change as may be approved by the relevant authority. Areas are approximate measurements and subject to final survey.

BP No.: A0539-00055-2008-BP01/BP No.: A0539-00055-2008-BP02 approved on 21st October 2011



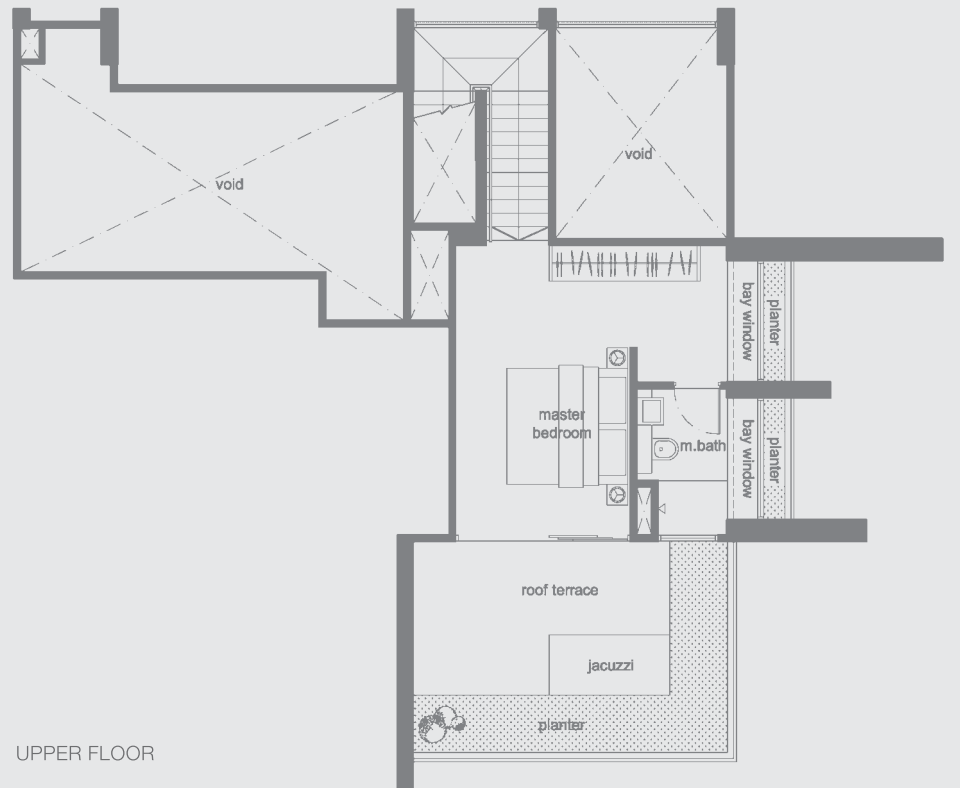
**TYPE A2**  
2-BEDROOM

UNIT #03-02 TO #13-02 & #15-02 TO #17-02  
#03-04 TO #13-04 & #15-04 TO #17-04  
AREA 77 SQM / 829 SQFT



**TYPE PH1**  
2-BEDROOM + STUDY PENTHOUSE

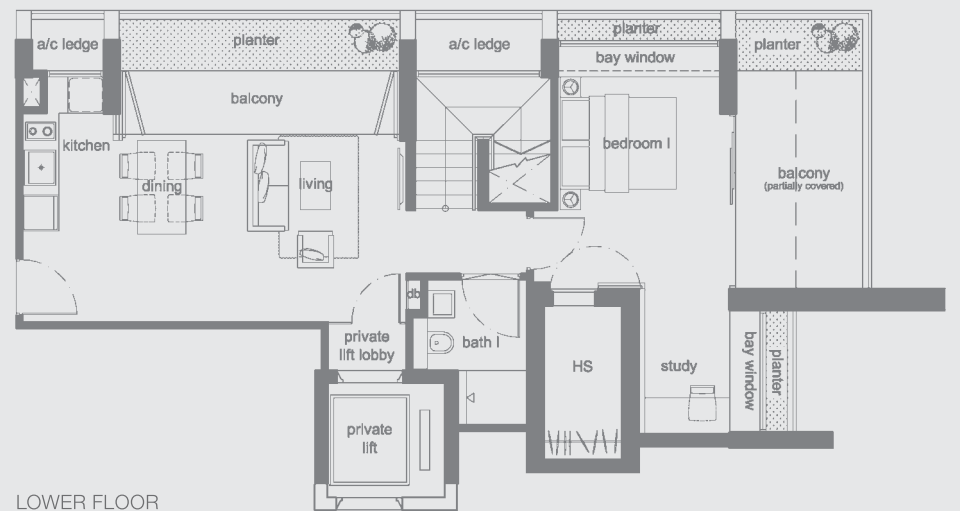
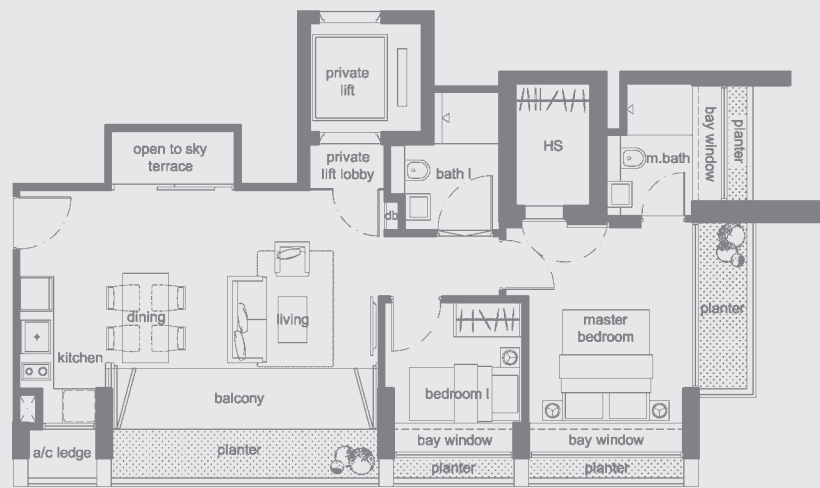
UNIT #18-03  
AREA 175 SQM / 1884 SQFT



UPPER FLOOR

**TYPE A2-R**  
2-BEDROOM

UNIT #18-04  
AREA 78 SQM / 840 SQFT



LOWER FLOOR



The above plans are subject to change as may be approved by the relevant authority. Areas are approximate measurements and subject to final survey.

BP No.: A0539-00055-2008-BP01/BP No.: A0539-00055-2008-BP02 approved on 21st October 2011



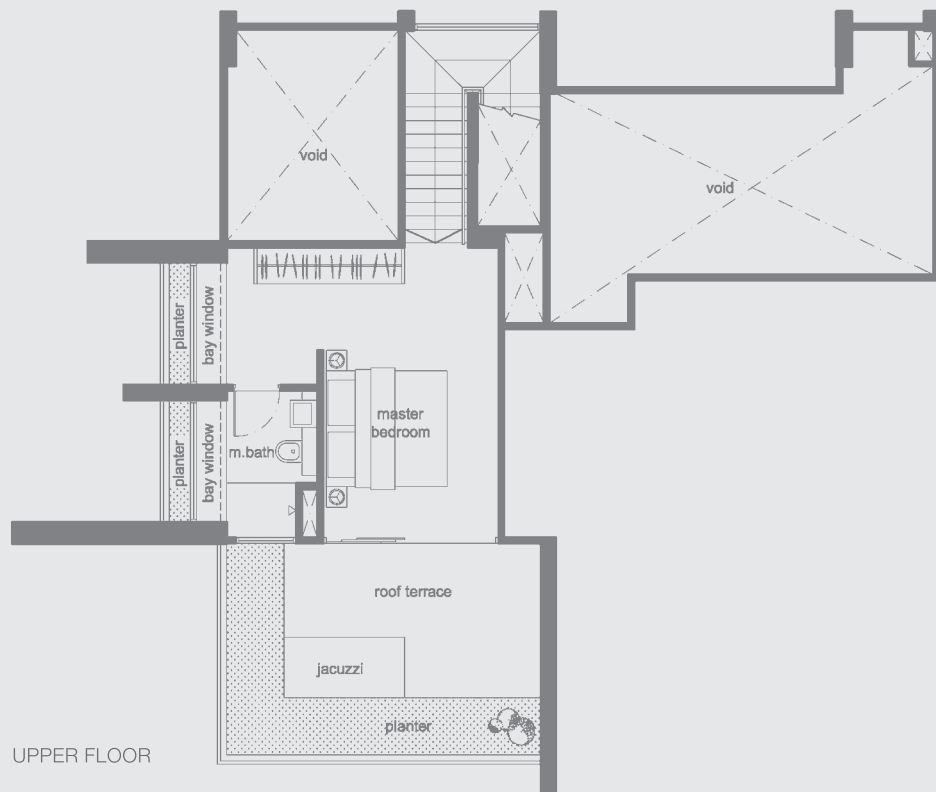
The above plans are subject to change as may be approved by the relevant authority. Areas are approximate measurements and subject to final survey.

BP No.: A0539-00055-2008-BP01/BP No.: A0539-00055-2008-BP02 approved on 21st October 2011

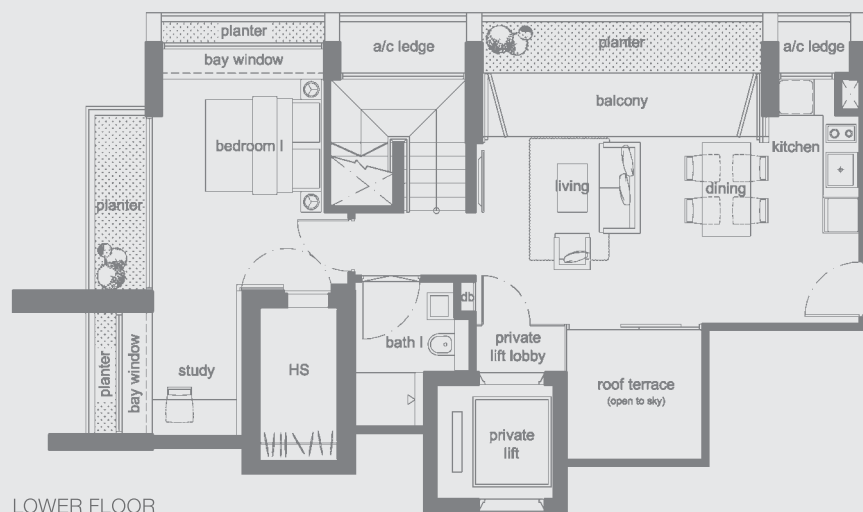


TYPE PH2  
2-BEDROOM + STUDY PENTHOUSE

UNIT #18-02  
AREA 173 SQM / 1862 SQFT



UPPER FLOOR

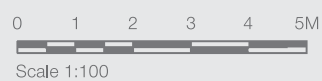


LOWER FLOOR



The above plans are subject to change as may be approved by the relevant authority. Areas are approximate measurements and subject to final survey.

BP No.: A0539-00055-2008-BP01/BP No.: A0539-00055-2008-BP02 approved on 21st October 2011



Sentosa Cove



Mount Echo Park



SkyPark@Somerset



The Oliv



St Patrick's Residences

TG DEVELOPMENT

Driven by the passion to deliver niche residences of distinctive standards, TG Development Pte Ltd was incorporated in 1987. With a panel of renowned architects, our vision is to materialize unique property development blueprints that are well-poised to fit the metropolitan lifestyle of our well-heeled clientele. Till date, we own a portfolio of highly sought-after residential developments such as The Mondrian, Oxley Three, Mount Echo Park Good Class Bungalow and other award-winning development such as SkyPark. Having completed extensive amount of properties and spearheaded lucrative joint ventures that culminated in a myriad of distinct architectural pieces, we have a wealth of expertise and finances to support niche development projects. From terrace houses, semi-detached homes, bungalows to high-end apartments, our hallmark distinctive architecture sets us apart from other developers.

Make an exclusive lifestyle statement with TG Development, where luxurious living beckons.



Chewathai Ratchaprarop



91 Marshall



448 @ East Coast

TEE INTERNATIONAL LIMITED

Established in the 1980s, TEE International Limited ("TEE") had grown from a general electrical engineering firm to a recognized Engineering and Real Estates group which is listed in the Singapore Stock Exchange and has businesses spanning Singapore, Malaysia, Thailand and Brunei. Leveraging on its engineering expertise, TEE had executed both residential and commercial development projects with an effective project management system.

Being a boutique property developer in Singapore, TEE has also successfully established its presence in Thailand and Malaysia. TEE regional footprint will be expanding further to Vietnam and China in the next few years. Towards the Company's continued growth, TEE will target at niche and prime boutique development. Award-winning architects and landscape specialists are being engaged to work on the prestigious development to enhance their appeal to sophisticated home buyers.