

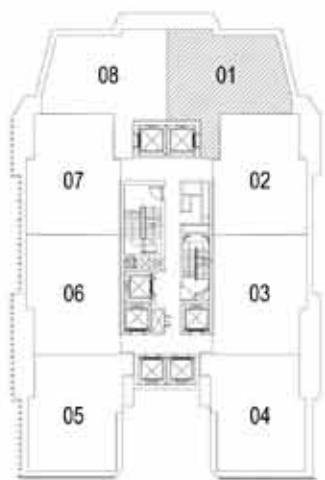
# SOHO b7m



# SOHO c2m



 BUYCONDO.sg



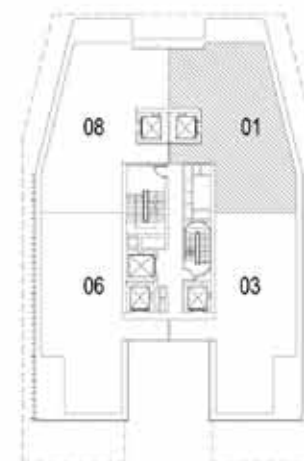
#23-01  
#24-01

PLATFORM FURNITURE



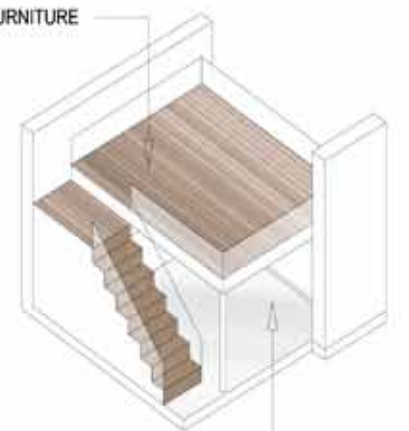
WORK AREA

 **KEYPLAN**  
(NOT TO SCALE)



#28-01  
#29-01  
#30-01

PLATFORM FURNITURE



WORK AREA

 **KEYPLAN**  
(NOT TO SCALE)

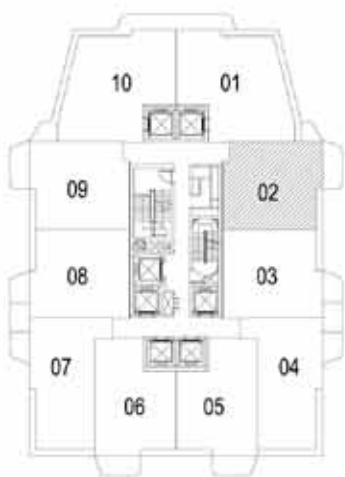


# SOHO a4m

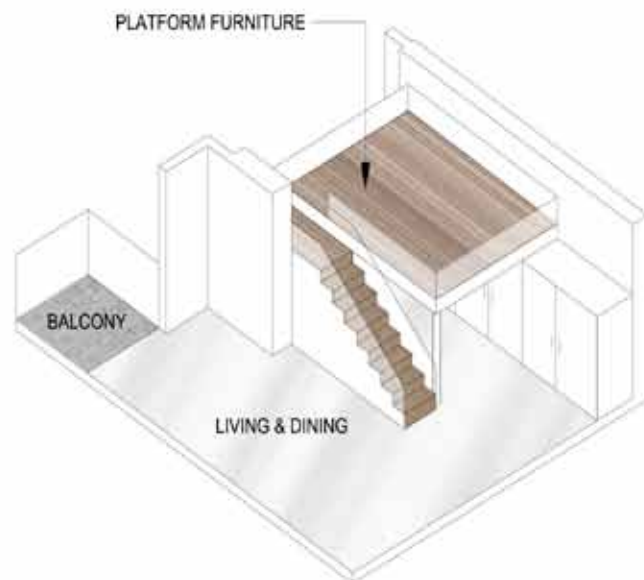
# SOHO b6m



BUYCONDO.sg



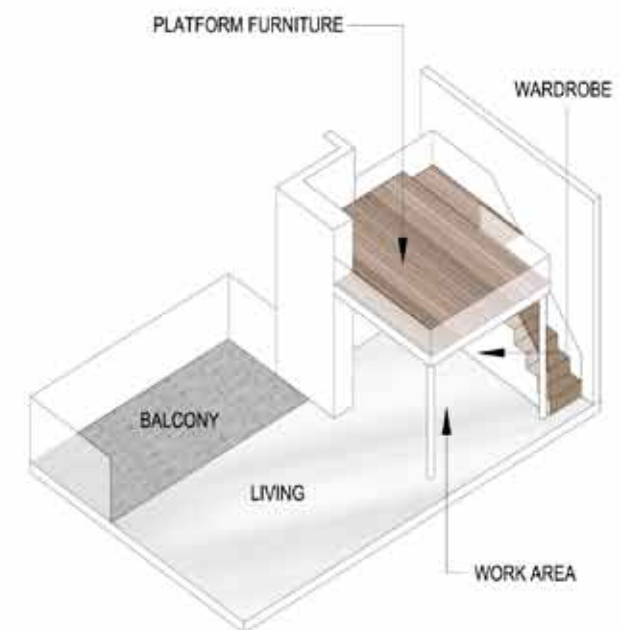
#13-02  
#14-02  
#15-02  
#16-02  
#17-02  
#18-02



KEYPLAN  
(NOT TO SCALE)



#23-02  
#24-02



KEYPLAN  
(NOT TO SCALE)



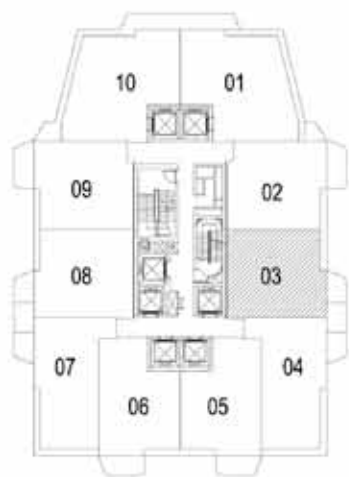
# SOHO a3m



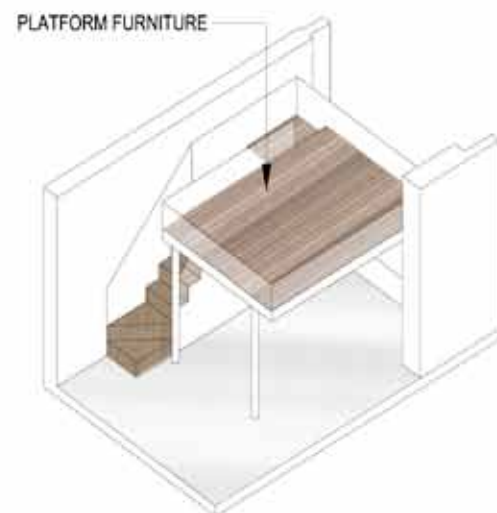
# SOHO b5m



BUYCONDO.sg



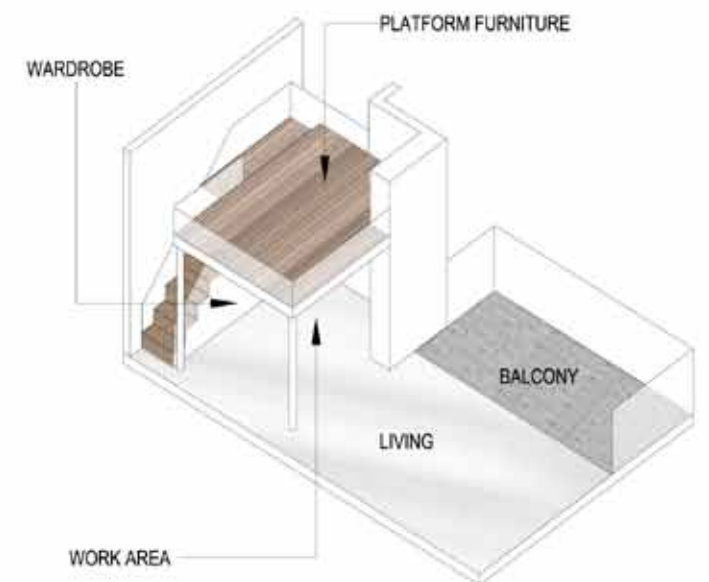
#11-03  
#13-03  
#14-03  
#15-03  
#16-03  
#17-03  
#18-03



**KEYPLAN**  
(NOT TO SCALE)



#22-03  
#23-03  
#24-03



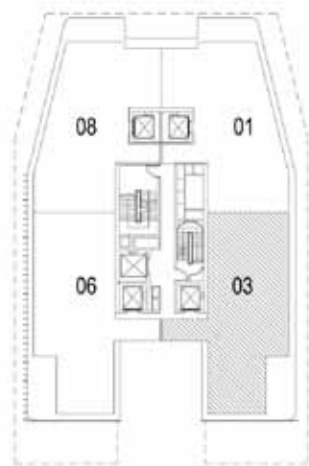
**KEYPLAN**  
(NOT TO SCALE)



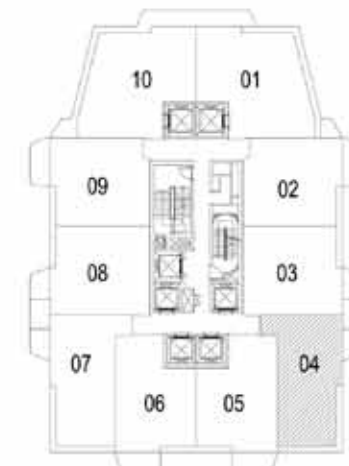
# SOHO c1m



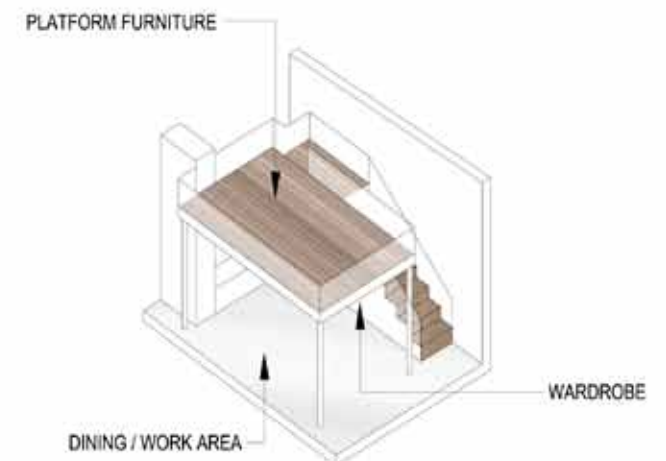
# SOHO a2m



#26-03  
#27-03  
#28-03  
#29-03  
#30-03



#13-04  
#14-04  
#15-04  
#16-04  
#17-04  
#18-04



**KEYPLAN**  
(NOT TO SCALE)



**KEYPLAN**  
(NOT TO SCALE)



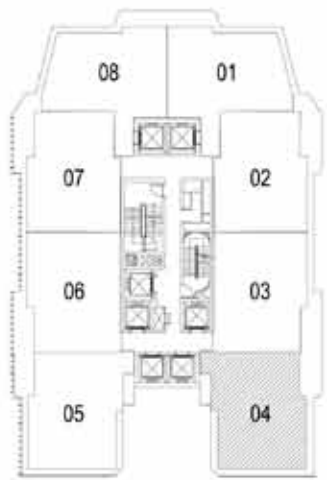
# SOHO b4m



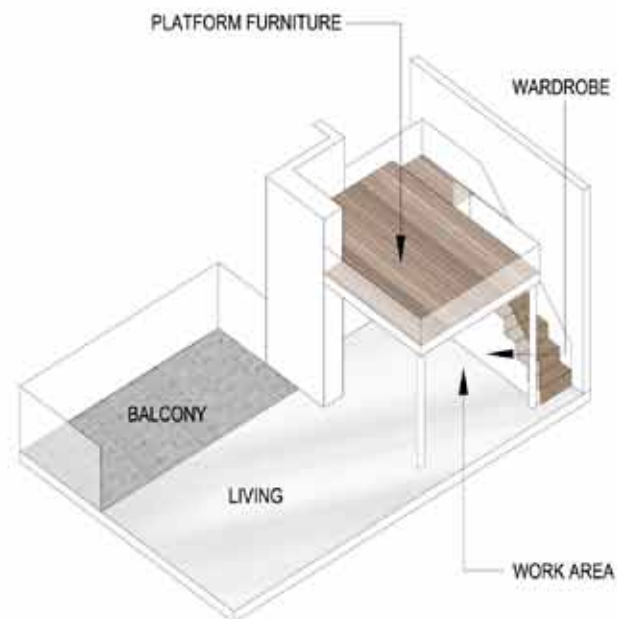
# SOHO a1m



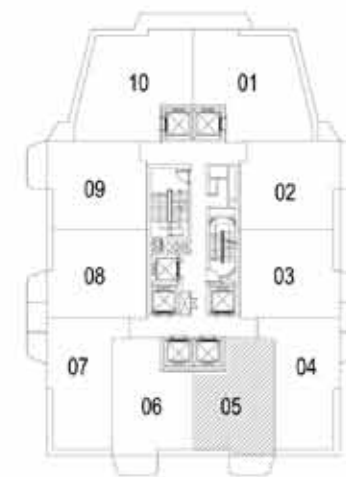
BUYCONDO.sg



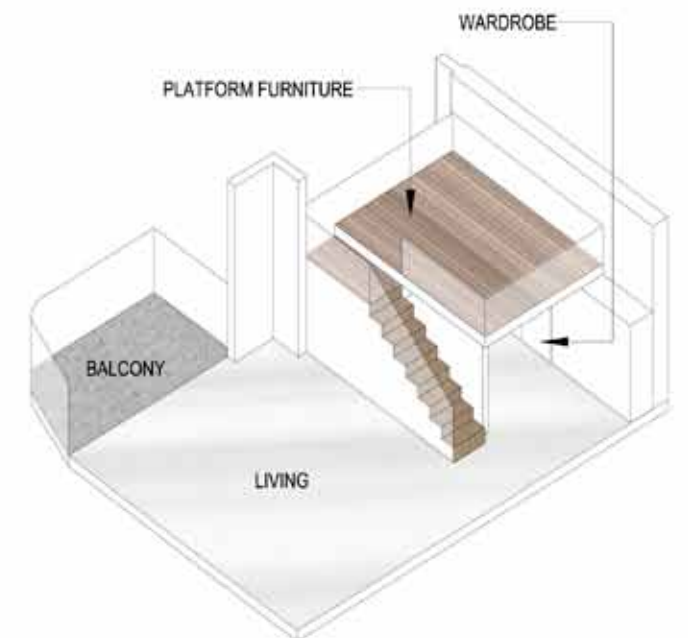
#20-04  
#21-04  
#22-04  
#23-04  
#24-04



KEYPLAN  
(NOT TO SCALE)



#14-05  
#15-05  
#16-05  
#17-05  
#18-05



KEYPLAN  
(NOT TO SCALE)



# SOHO b4



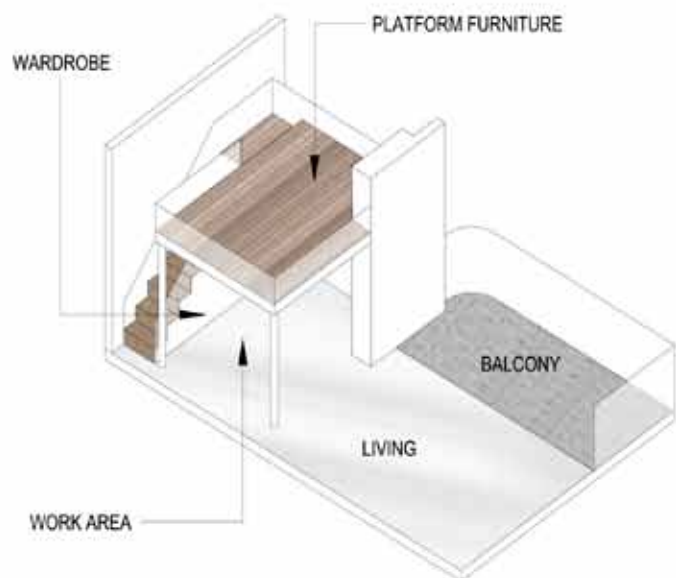
# SOHO a1



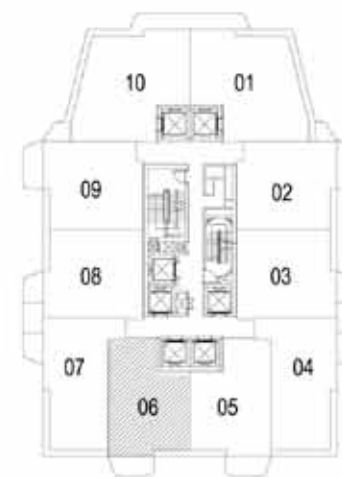
BUYCONDO.sg



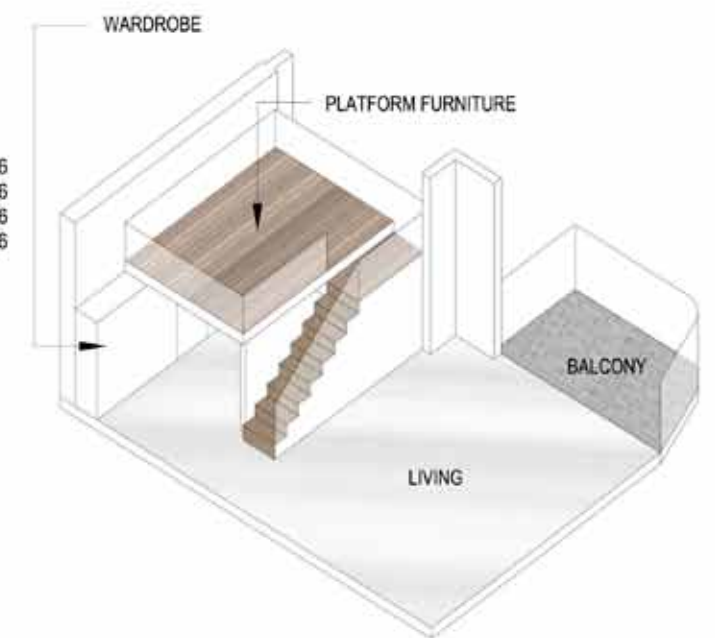
#21-05  
#22-05  
#23-05  
#24-05



KEYPLAN  
(NOT TO SCALE)



#15-06  
#16-06  
#17-06  
#18-06



KEYPLAN  
(NOT TO SCALE)

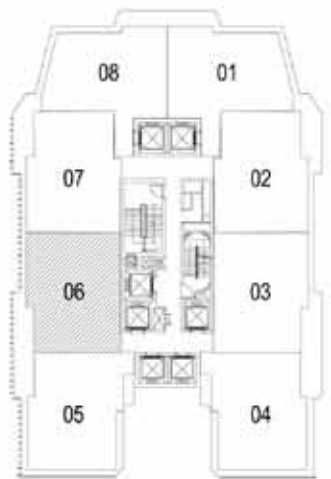


# SOHO b5

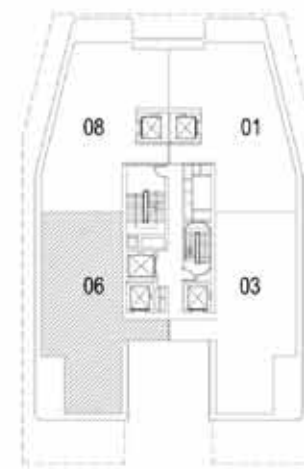
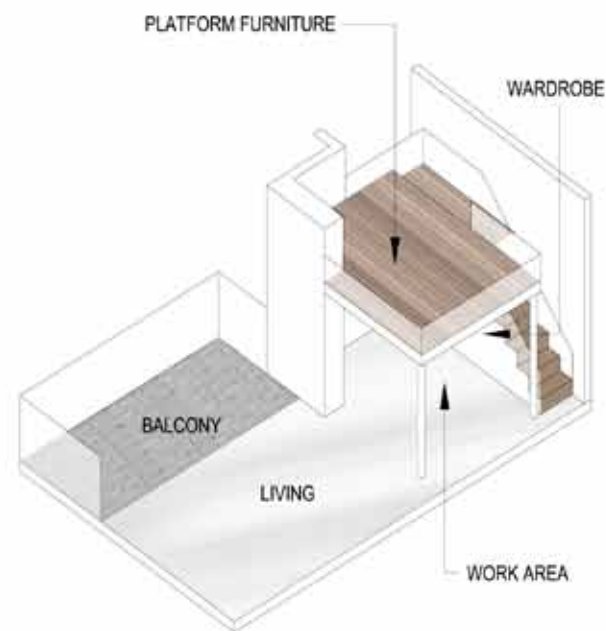
# SOHO c1



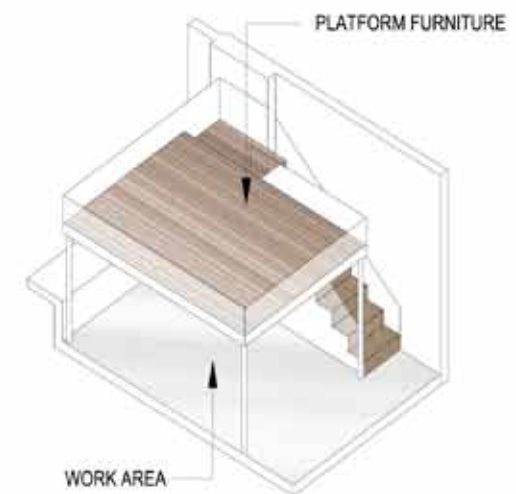
BUYCONDO.SG



#21-06  
#22-06  
#23-06  
#24-06



#27-06  
#28-06  
#29-06  
#30-06



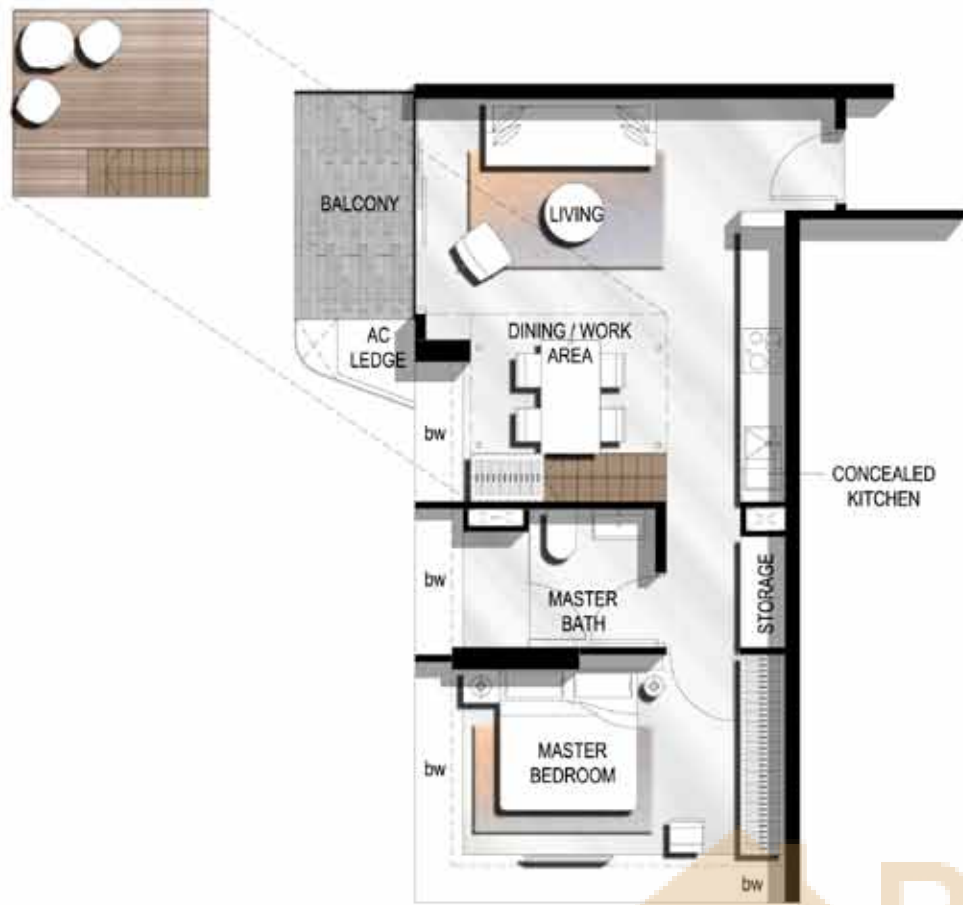
KEYPLAN  
(NOT TO SCALE)



KEYPLAN  
(NOT TO SCALE)



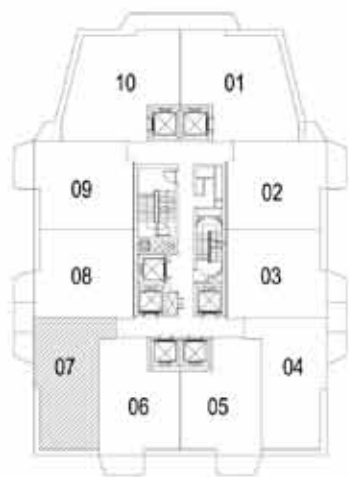
# SOHO a2



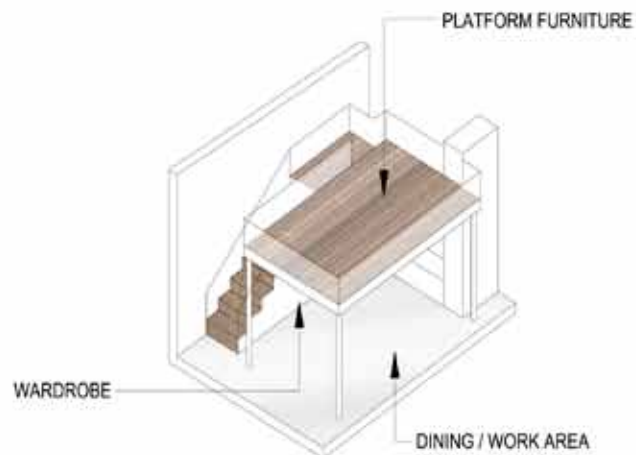
# SOHO b6



 BUYCONDO.sg



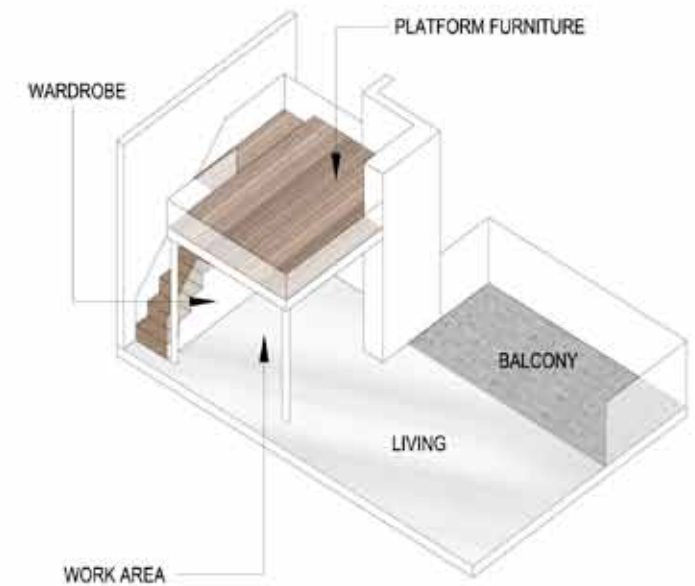
#15-07  
#16-07  
#17-07  
#18-07



 **KEYPLAN**  
(NOT TO SCALE)



#20-07  
#21-07  
#22-07  
#23-07  
#24-07



 **KEYPLAN**  
(NOT TO SCALE)





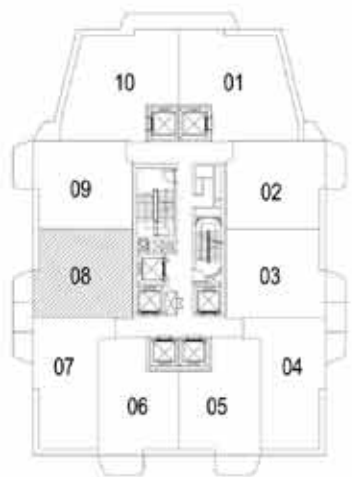
# SOHO a3



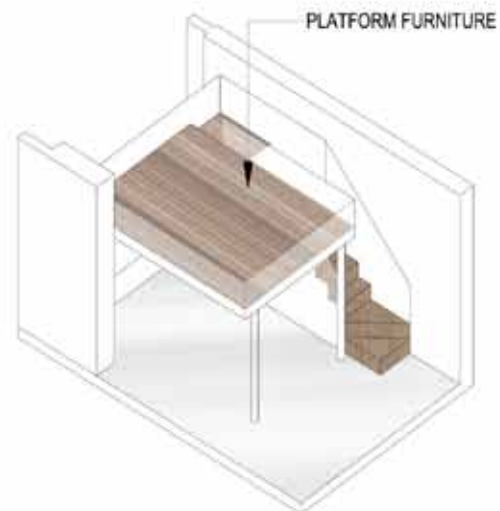
# SOHO b7



 BUYCONDO.sg



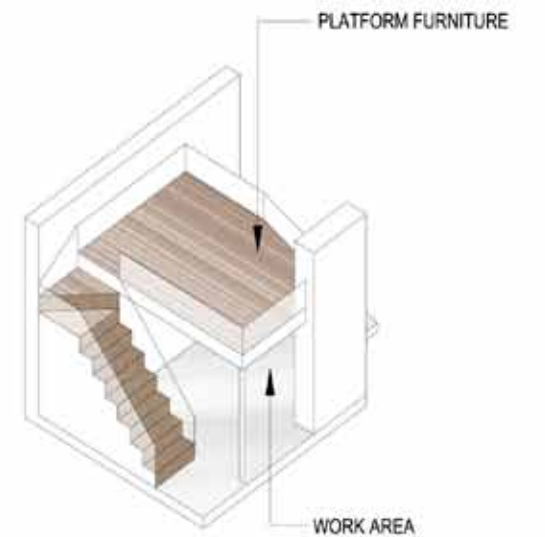
#13-08  
#14-08  
#15-08  
#16-08  
#17-08



 **KEYPLAN**  
(NOT TO SCALE)



#22-08  
#23-08  
#24-08



 **KEYPLAN**  
(NOT TO SCALE)



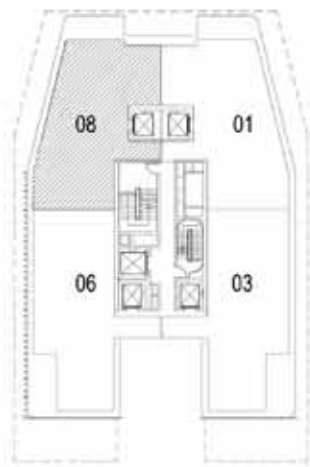
# SOHO c2



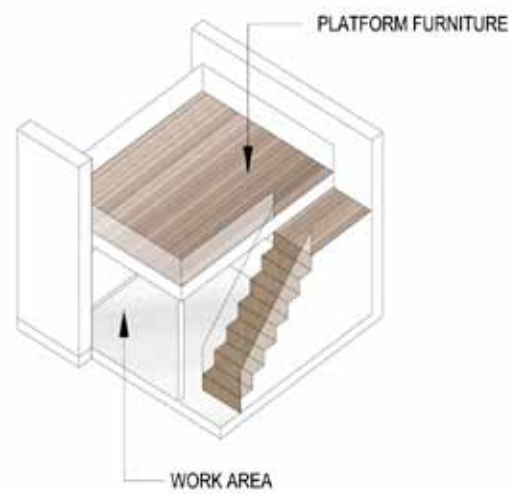
# SOHO a4



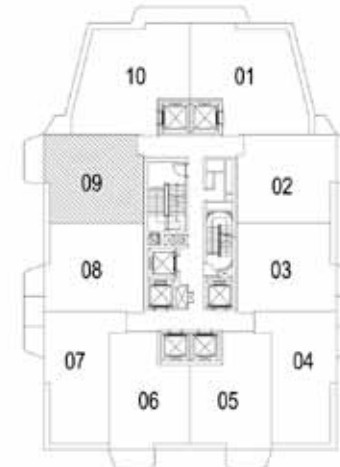
BUYCONDO.sg



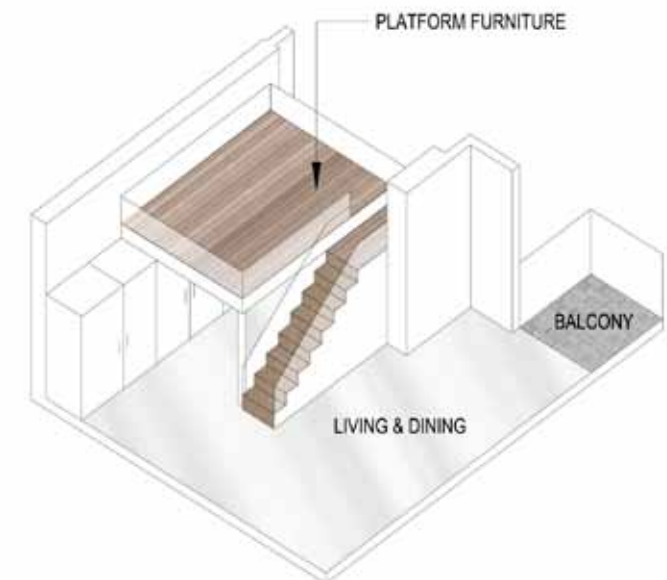
#26-08  
#27-08  
#28-08  
#29-08  
#30-08



KEYPLAN  
(NOT TO SCALE)



#11-09  
#12-09  
#13-09  
#14-09  
#15-09  
#16-09  
#17-09  
#18-09



KEYPLAN  
(NOT TO SCALE)



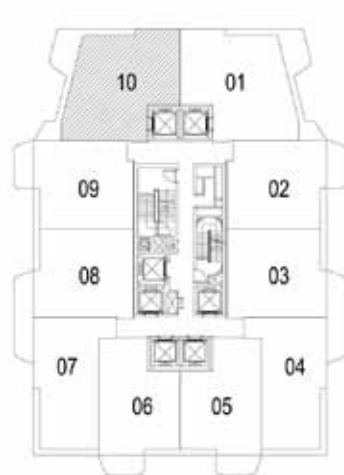
# SOHO b3



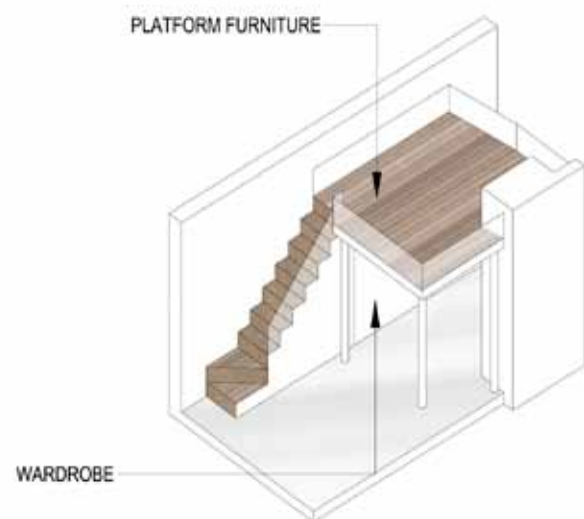
LIFE IN FULL SPECTRUM.

Your SOHO lifestyle begins here.

BUY CONDO.SG Far East  
**SO/HO**  
Space Evolves.



#14-10



**KEYPLAN**  
(NOT TO SCALE)



Far East SOHO - another signature brand by Far East Organization.

Far East Organization is the only developer in the world to win eight FIABCI Prix d'Excellence awards, the highest honour in international real estate.

DISCLAIMER: The information contained herein is subject to change and cannot form part of an offer or contract. While every reasonable care has been taken in providing this information, the developer or its agent cannot be held responsible for any inaccuracies. Whilst we believe the contents of this brochure to be correct and accurate at time of print, they are not to be regarded as statements or representations of fact. Illustrations in the brochure are artist's impressions, which serve only to give an approximate idea of the project. All artist's impressions and all plans are subject to any amendments as may be approved by the relevant authorities.

The developer reserves any and all copyright, design and other proprietary rights in and to this document (or any part thereof) including all or any part of the information, material or artwork contained therein. Unless otherwise expressly agreed to in writing, this document or any part thereof may not be copied, modified, distributed, reproduced or reused without the express written consent of the developer.

Developer: Far East Success Development Pte. Ltd. & Whitewater Properties Pte. Ltd. (197801286N & 200204488W) • Licence No.: C0296 • Tenure: Leasehold 103 years from 01 October 2010 • Land Description: Lots 801K & 782M (now known as Lot 1311T) T5 27 at Cairnhill Road/Scotts Road • Expected Vacant Possession Date: 30 June 2017 • Expected Legal Completion Date: 30 June 2020