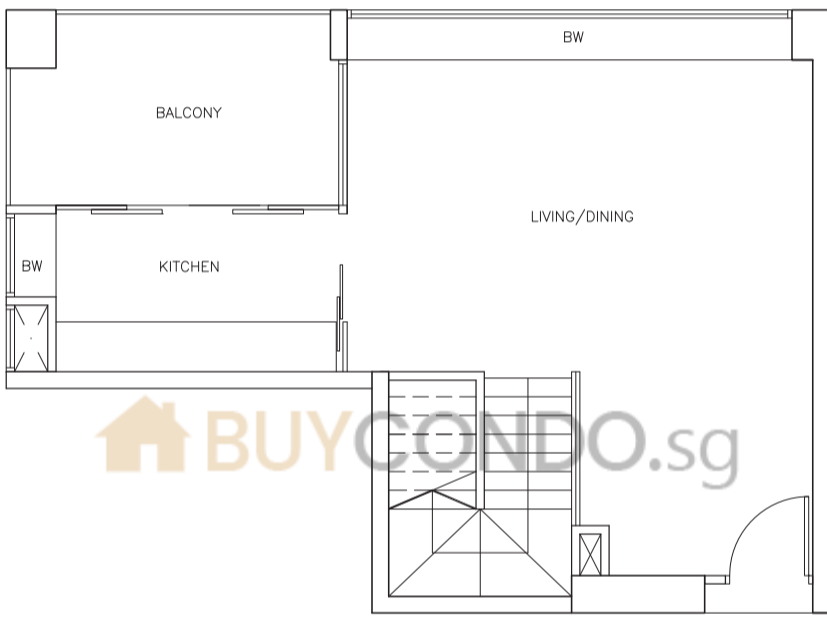
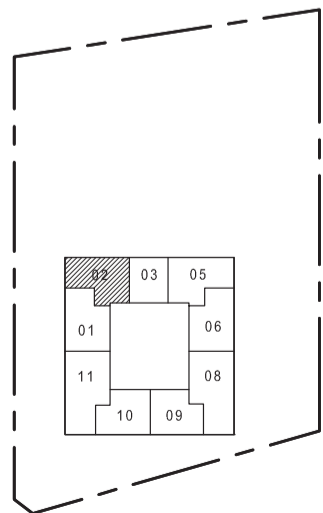


Altez



(ENTRY LEVEL)

BUYCONDO.sg



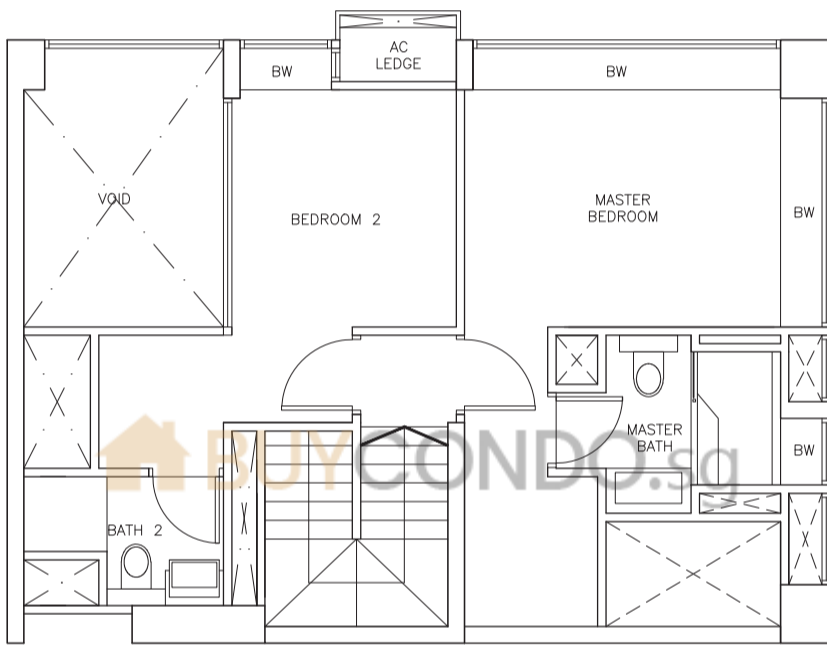
UNIT TYPE BL 1

16 Enggor Street - #42-02 TO #50-02

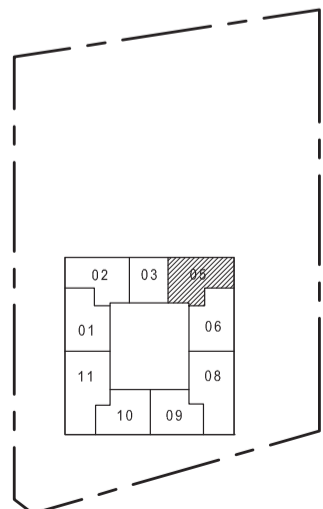
The above plan is subject to change as may be approved by the relevant authorities. This key plan is not to scale.



Altez



(UPPER LEVEL)

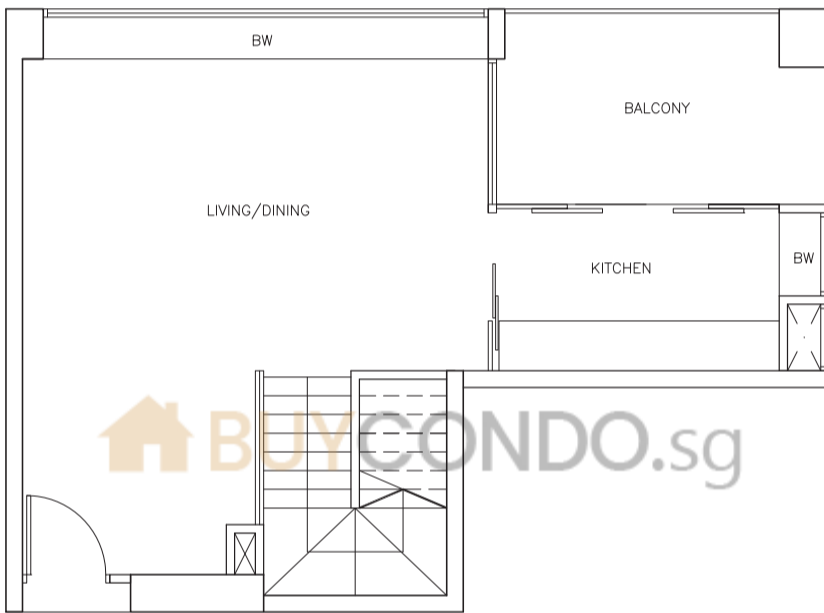


UNIT TYPE BL 2
16 Enggor Street - #42-05 TO #50-05

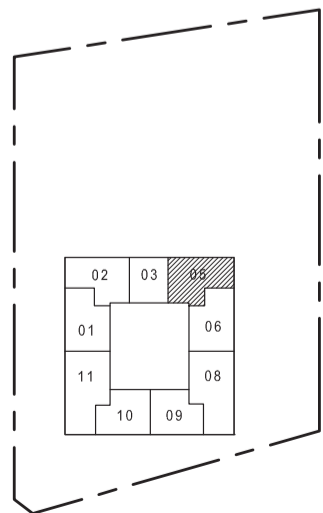
The above plan is subject to change as may be approved by the relevant authorities. This key plan is not to scale.



Altez



(ENTRY LEVEL)



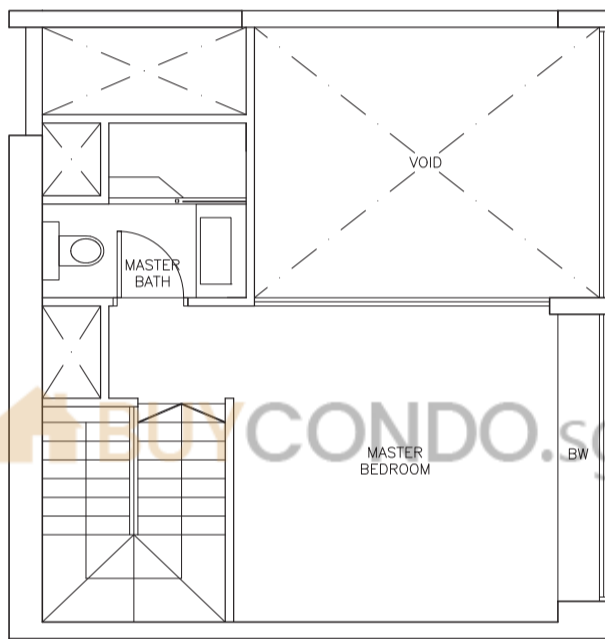
UNIT TYPE BL 2

16 Enggor Street - #42-05 TO #50-05

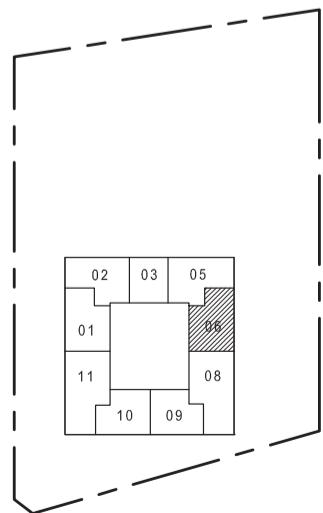
The above plan is subject to change as may be approved by the relevant authorities. This key plan is not to scale.



Altez



(UPPER LEVEL)



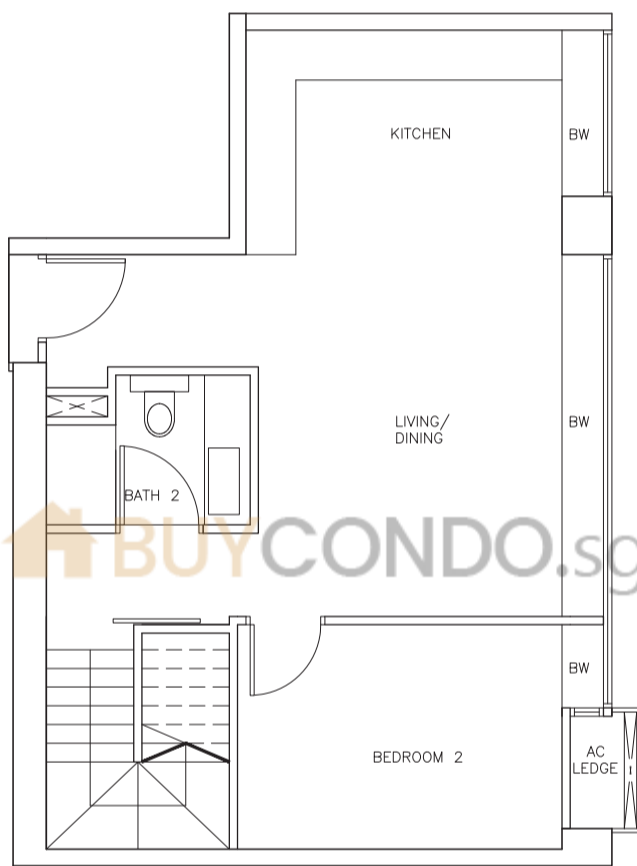
UNIT TYPE BL 3

16 Enggor Street - #42-06 TO #50-06

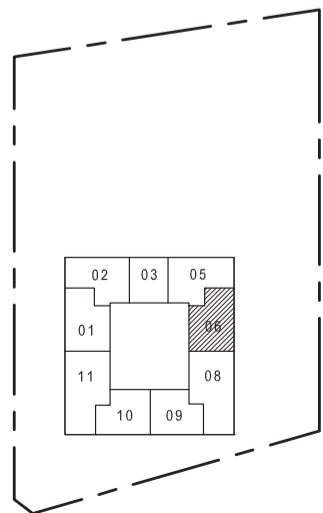
The above plan is subject to change as may be approved by the relevant authorities. This key plan is not to scale.



Altez



(ENTRY LEVEL)



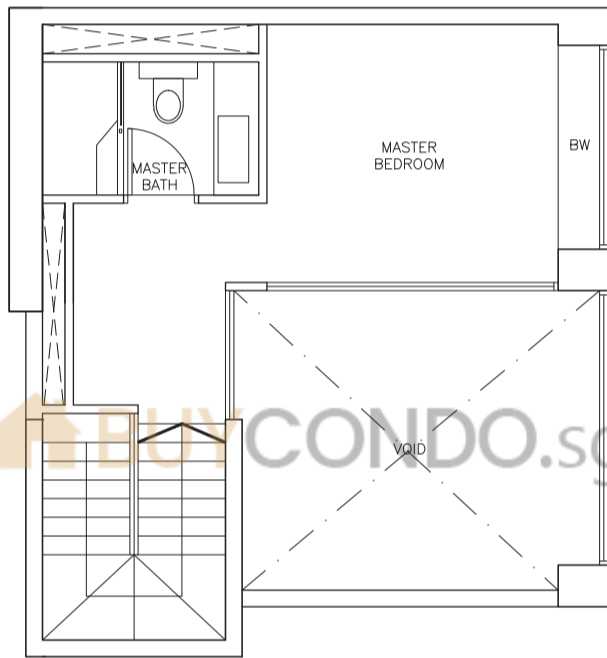
UNIT TYPE BL 3

16 Enggor Street - #42-06 TO #50-06

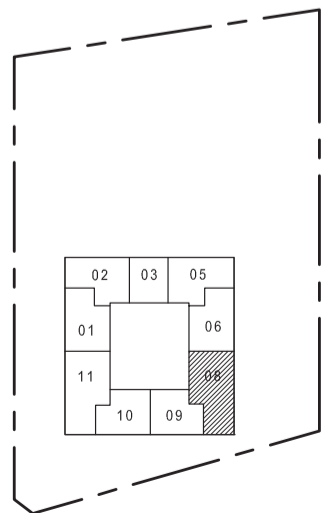
The above plan is subject to change as may be approved by the relevant authorities. This key plan is not to scale.



Altez



(UPPER LEVEL)



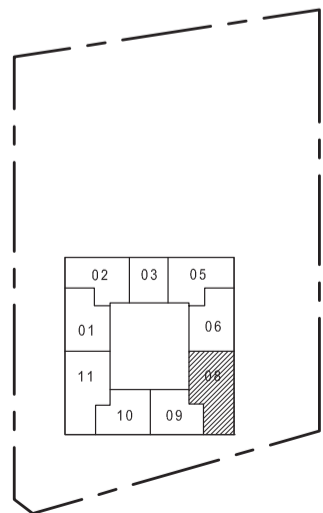
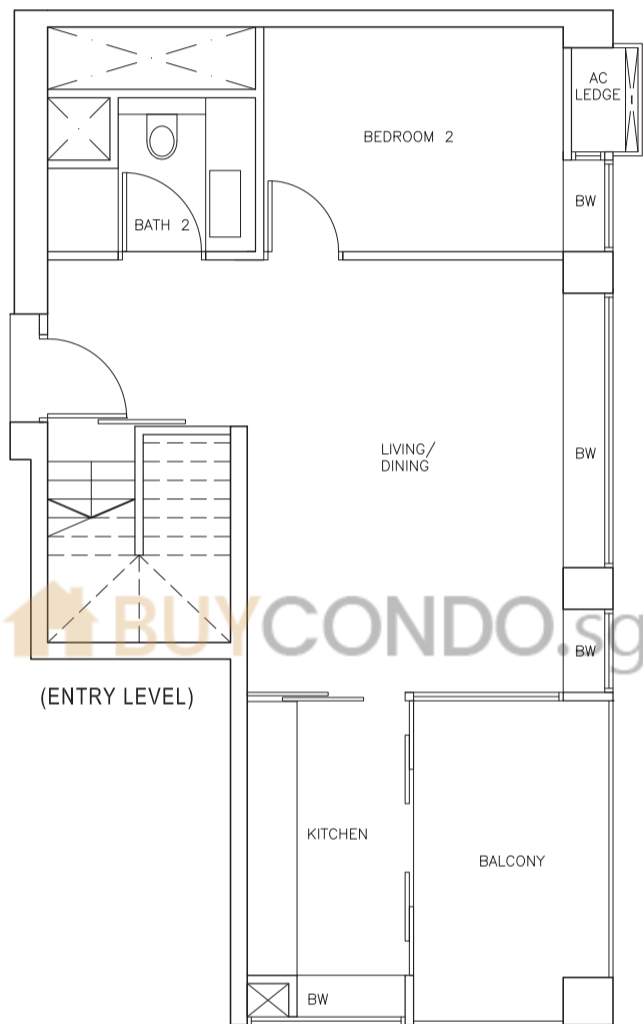
UNIT TYPE BL 4

16 Enggor Street - #42-08 TO #52-08

The above plan is subject to change as may be approved by the relevant authorities. This key plan is not to scale.



Altez

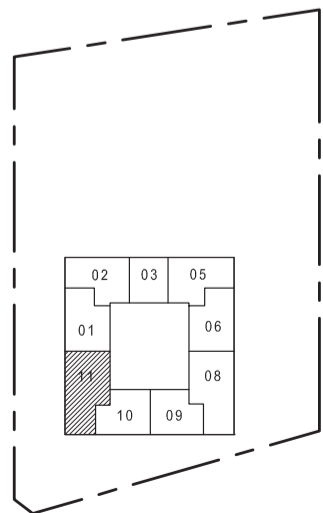
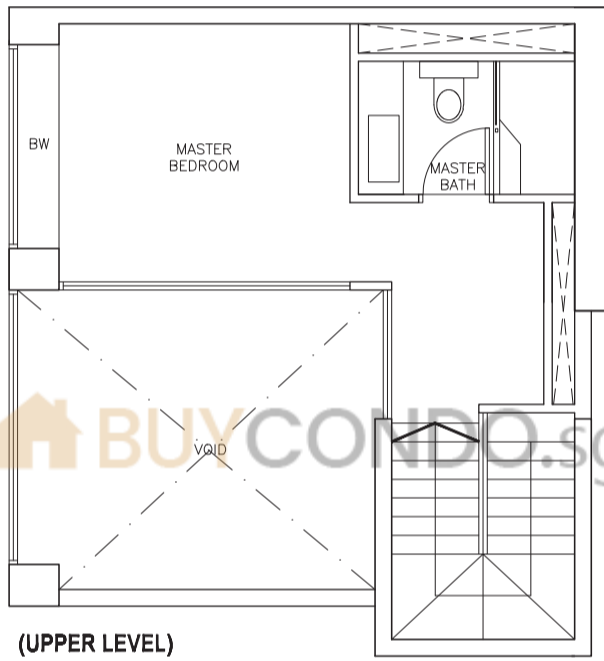


UNIT TYPE BL 4
16 Enggor Street - #42-08 TO #52-08

The above plan is subject to change as may be approved by the relevant authorities. This key plan is not to scale.



Altez



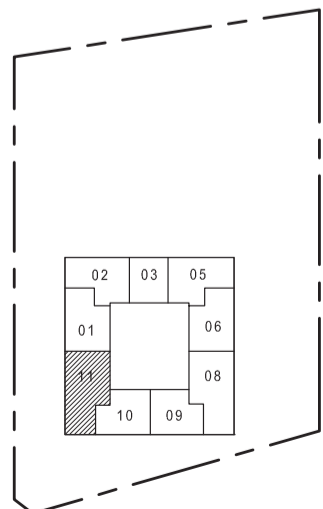
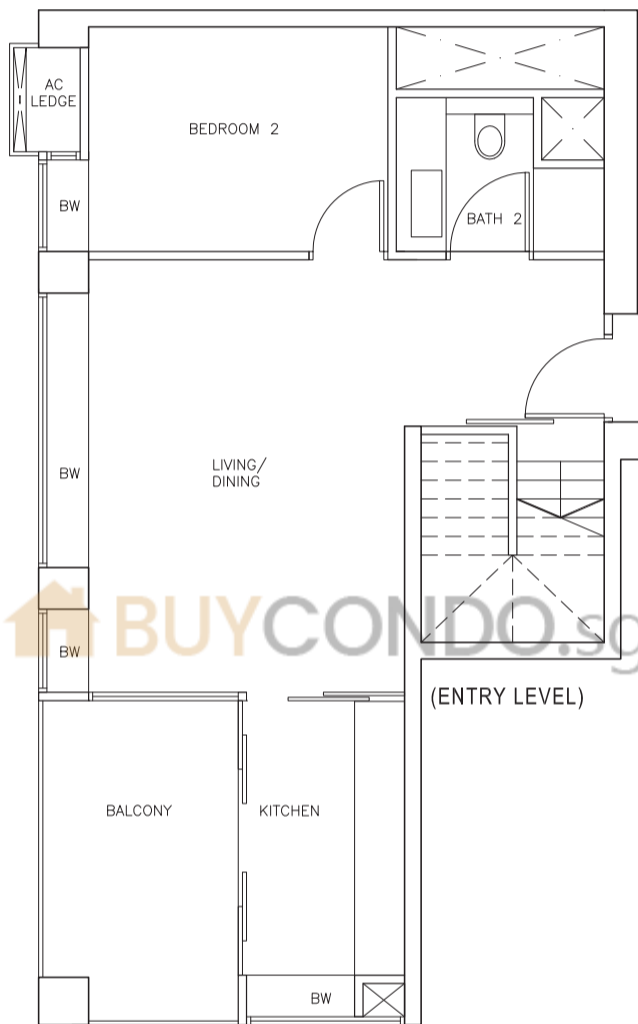
UNIT TYPE BL 7

16 Enggor Street - #42-11 TO #52-11

The above plan is subject to change as may be approved by the relevant authorities. This key plan is not to scale.



Altez

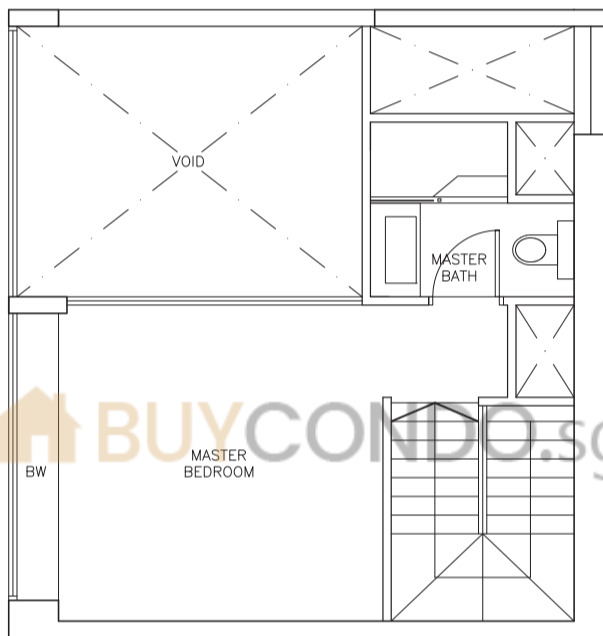


UNIT TYPE BL 7
16 Enggor Street - #42-11 TO #52-11

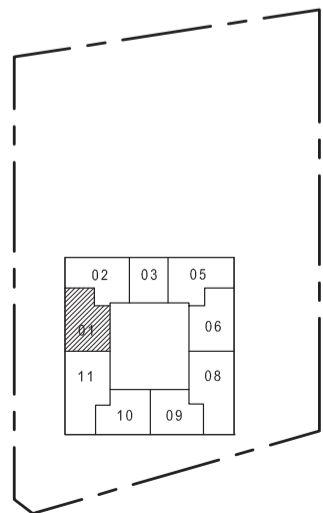
The above plan is subject to change as may be approved by the relevant authorities. This key plan is not to scale.



Altez



(UPPER LEVEL)

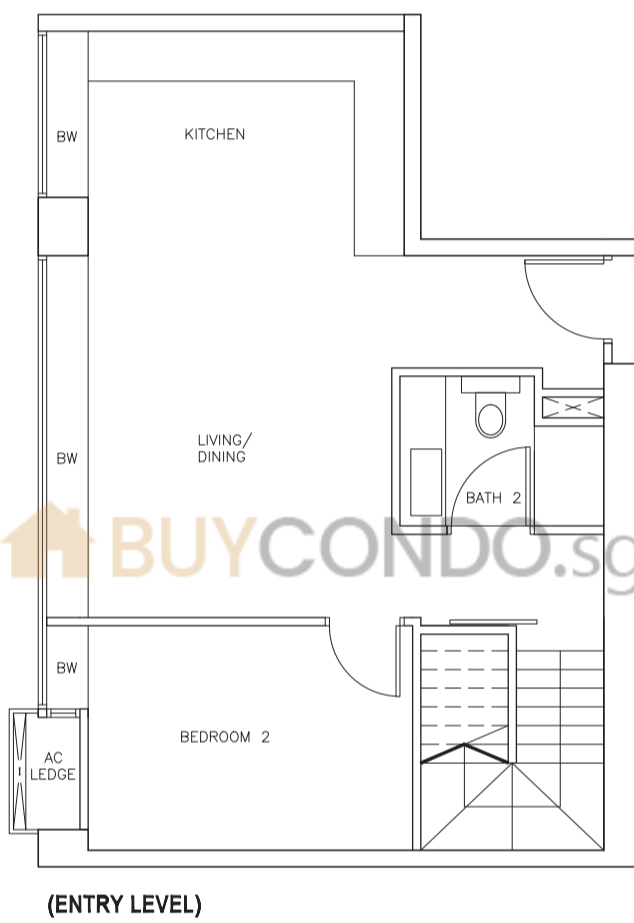


UNIT TYPE BL 8
16 Enggor Street - #42-01 TO #50-01

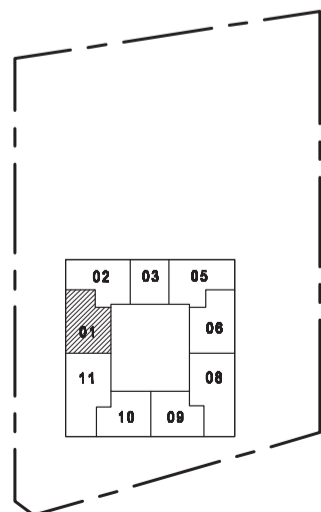
The above plan is subject to change as may be approved by the relevant authorities. This key plan is not to scale.



Altez



(ENTRY LEVEL)



UNIT TYPE BL 8

16 Enggor Street - #42-01 TO #50-01

The above plan is subject to change as may be approved by the relevant authorities. This key plan is not to scale.

