

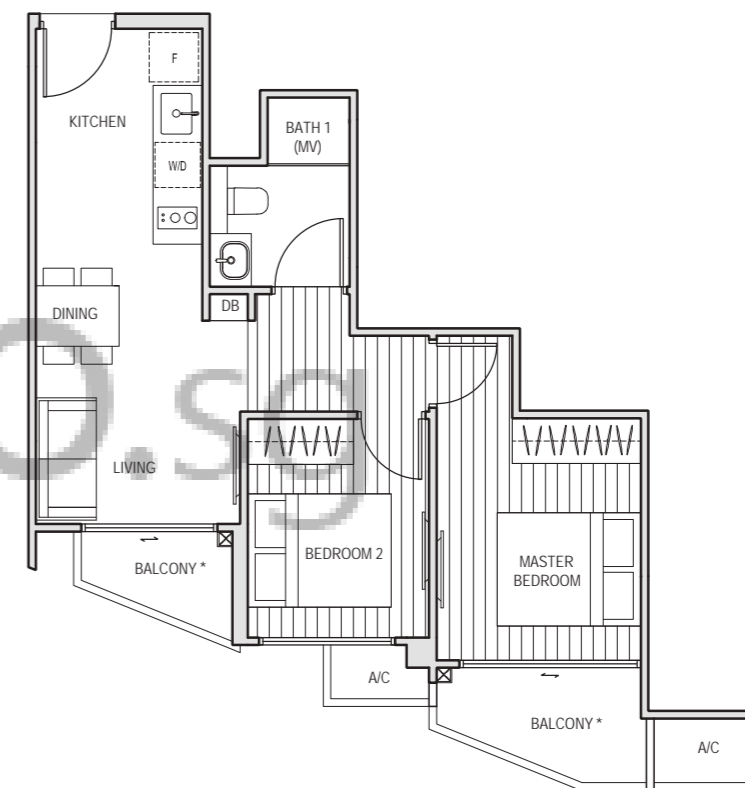
FLOOR PLANS

2 BEDROOM

TYPE A1

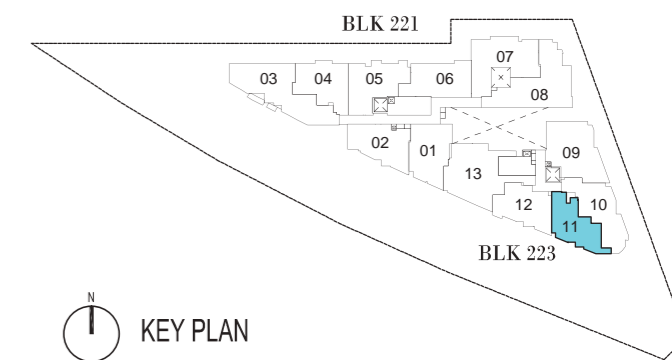
53 sq m

#02-11, #03-11, #04-11, #05-11



* The balcony / PES (Private Enclosed Space) shall not be enclosed. Only approved balcony screens are to be used. For illustration of the approved balcony screen, please refer to page 55 of this brochure.

All plans are subject to amendments as approved by the relevant authorities. Floor areas are approximate measurements and subject to final survey. Plans are not drawn to scale and do not form part of the contract.

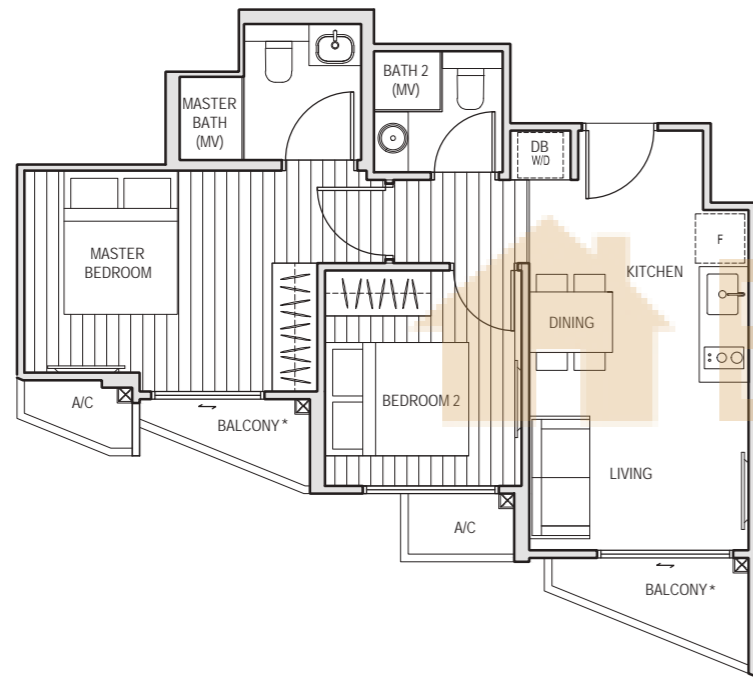


2 BEDROOM

TYPE A2

56 sq m

#02-12, #03-12, #04-12, #05-12

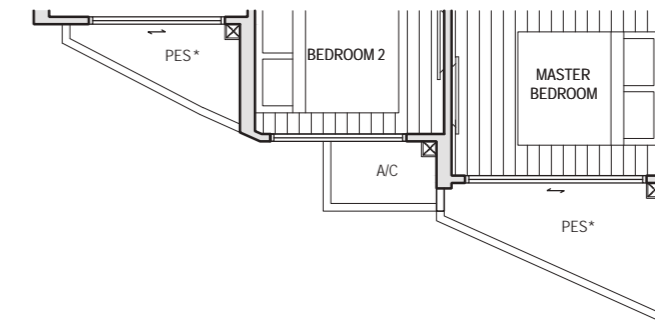
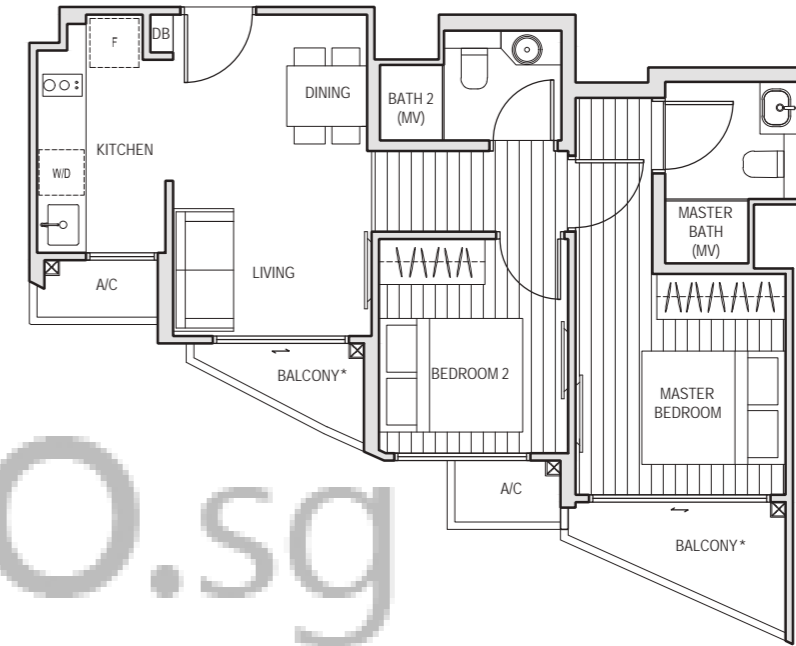


2 BEDROOM

TYPE A3

58 sq m

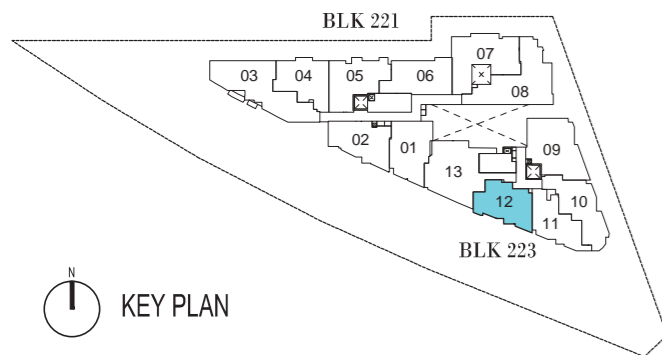
#02-02, #03-02, #04-02, #05-02



TYPE A3-G

58 sq m

#01-02



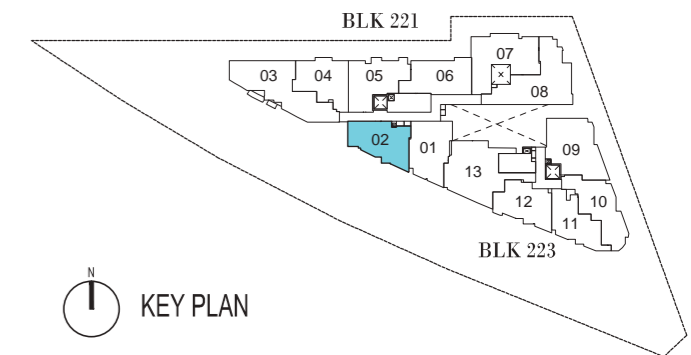
KEY PLAN

* The balcony / PES (Private Enclosed Space) shall not be enclosed. Only approved balcony screens are to be used. For illustration of the approved balcony screen, please refer to page 55 of this brochure.

All plans are subject to amendments as approved by the relevant authorities. Floor areas are approximate measurements and subject to final survey. Plans are not drawn to scale and do not form part of the contract.

* The balcony / PES (Private Enclosed Space) shall not be enclosed. Only approved balcony screens are to be used. For illustration of the approved balcony screen, please refer to page 55 of this brochure.

All plans are subject to amendments as approved by the relevant authorities. Floor areas are approximate measurements and subject to final survey. Plans are not drawn to scale and do not form part of the contract.



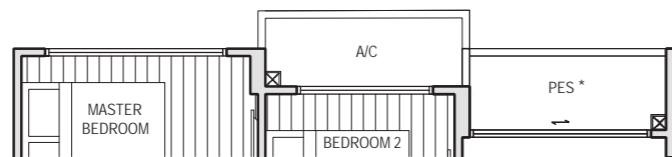
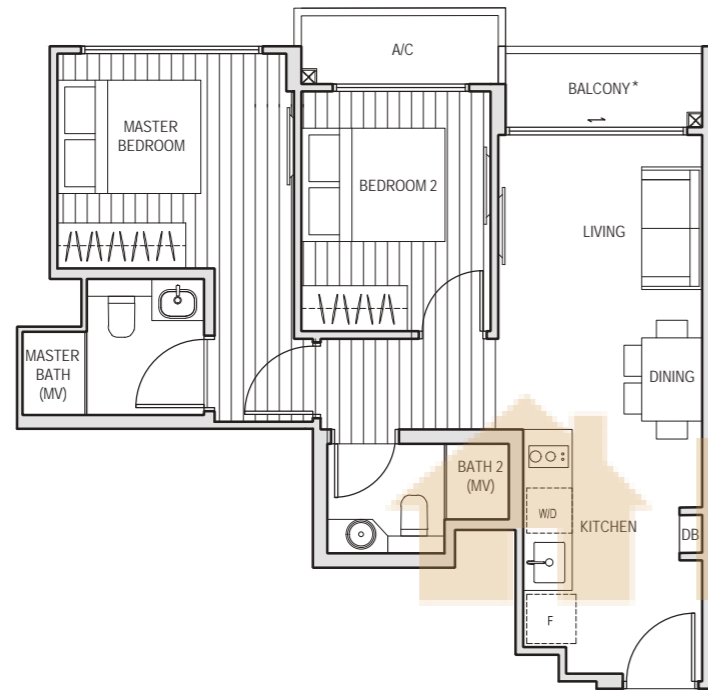
KEY PLAN

2 BEDROOM

TYPE A4

59 sq m

#02-04, #03-04, #04-04, #05-04



TYPE A4-G

59 sq m

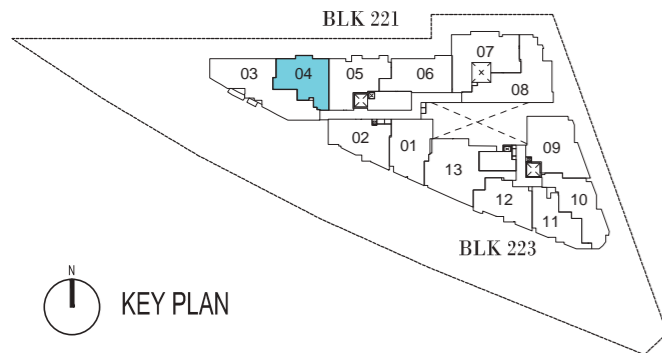
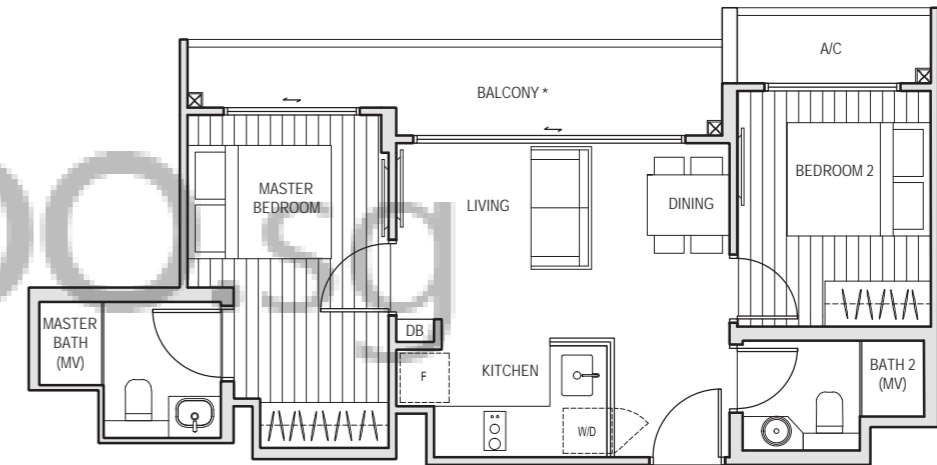
#01-04

2 BEDROOM

TYPE A5

60 sq m

#02-06, #03-06, #04-06, #05-06



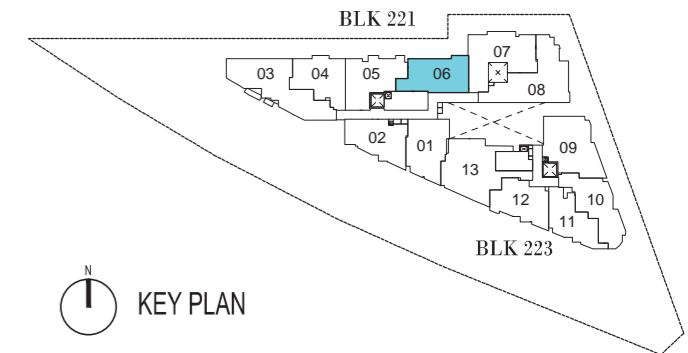
N
KEY PLAN

* The balcony / PES (Private Enclosed Space) shall not be enclosed. Only approved balcony screens are to be used. For illustration of the approved balcony screen, please refer to page 55 of this brochure.

All plans are subject to amendments as approved by the relevant authorities. Floor areas are approximate measurements and subject to final survey. Plans are not drawn to scale and do not form part of the contract.

* The balcony / PES (Private Enclosed Space) shall not be enclosed. Only approved balcony screens are to be used. For illustration of the approved balcony screen, please refer to page 55 of this brochure.

All plans are subject to amendments as approved by the relevant authorities. Floor areas are approximate measurements and subject to final survey. Plans are not drawn to scale and do not form part of the contract.



N
KEY PLAN

2 BEDROOM

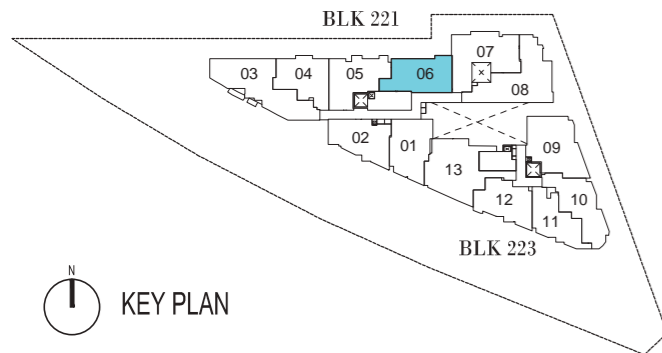
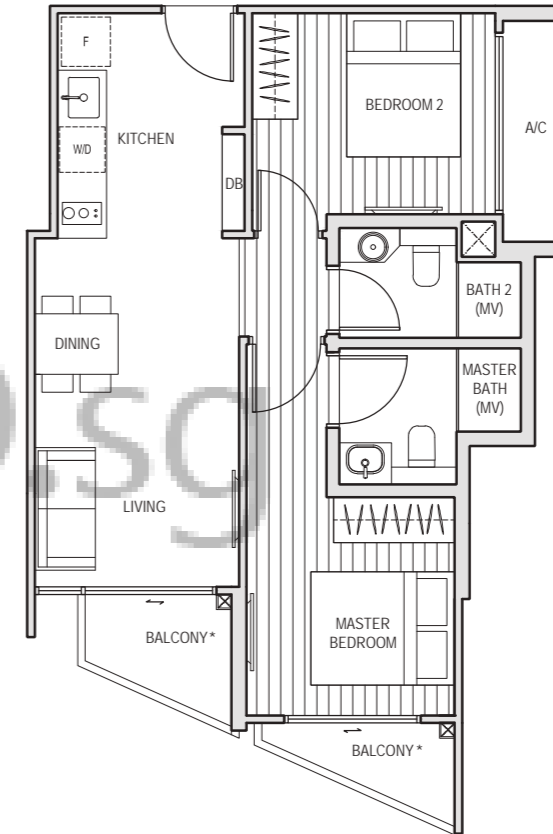
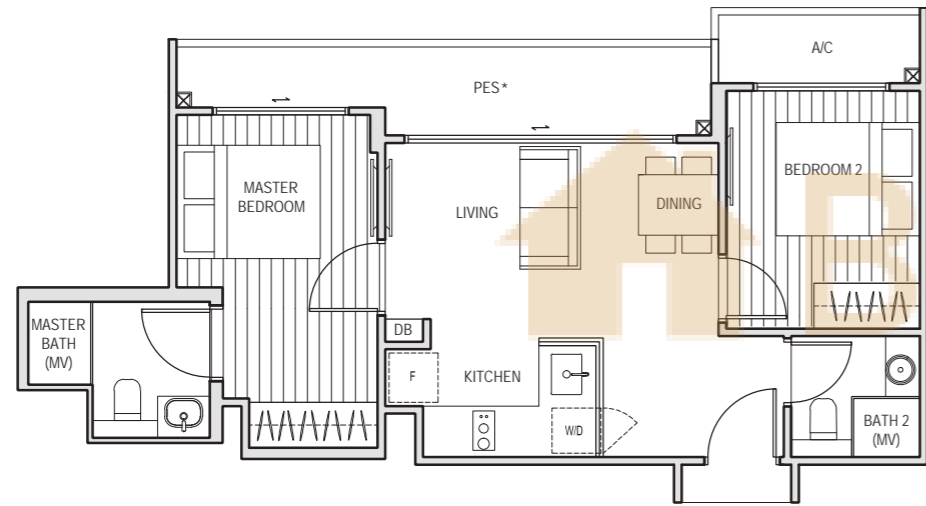
TYPE A5-G

61 sq m
#01-06

2 BEDROOM

TYPE A6

61 sq m
#02-01, #03-01, #04-01, #05-01



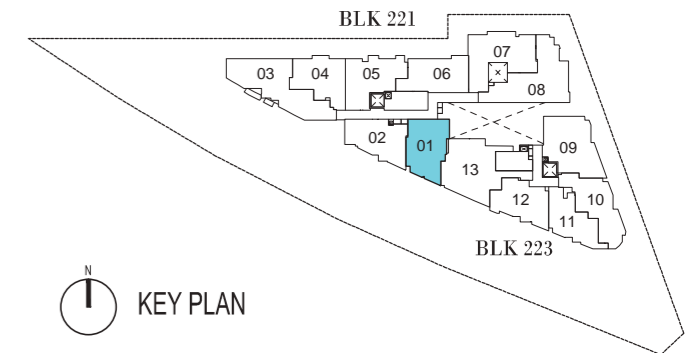
N
KEY PLAN

* The balcony / PES (Private Enclosed Space) shall not be enclosed. Only approved balcony screens are to be used. For illustration of the approved balcony screen, please refer to page 55 of this brochure.

All plans are subject to amendments as approved by the relevant authorities. Floor areas are approximate measurements and subject to final survey. Plans are not drawn to scale and do not form part of the contract.

* The balcony / PES (Private Enclosed Space) shall not be enclosed. Only approved balcony screens are to be used. For illustration of the approved balcony screen, please refer to page 55 of this brochure.

All plans are subject to amendments as approved by the relevant authorities. Floor areas are approximate measurements and subject to final survey. Plans are not drawn to scale and do not form part of the contract.



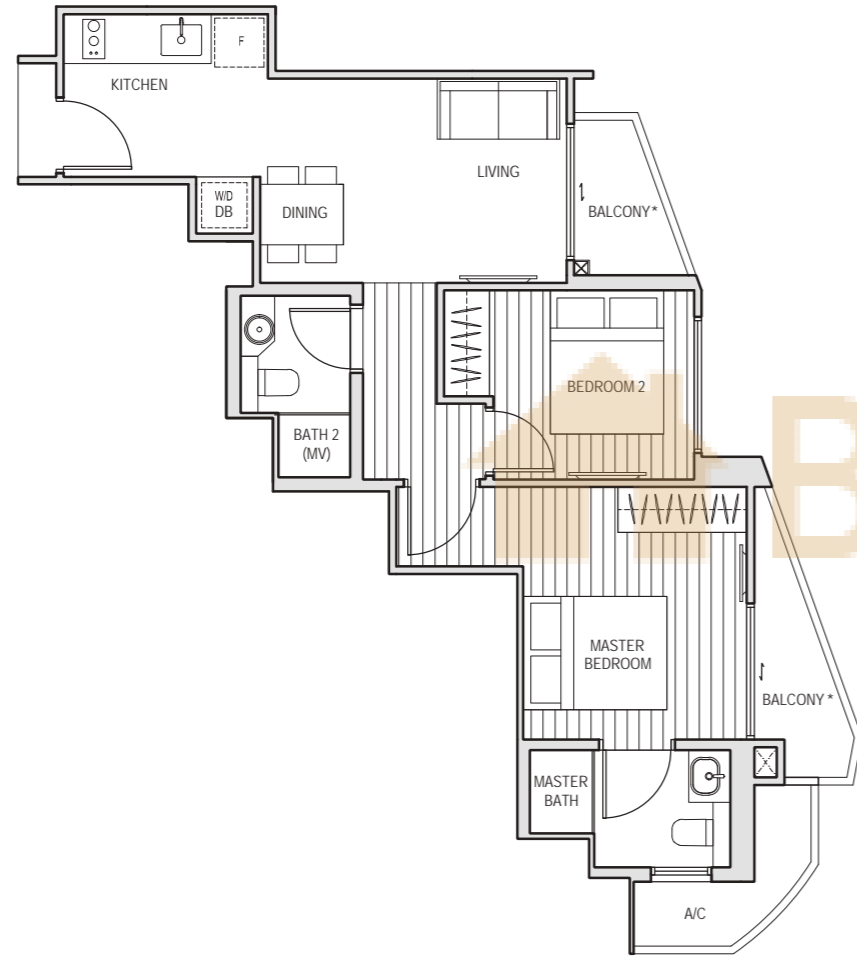
N
KEY PLAN

2 BEDROOM

TYPE A7

63 sq m

#02-10, #03-10, #04-10, #05-10

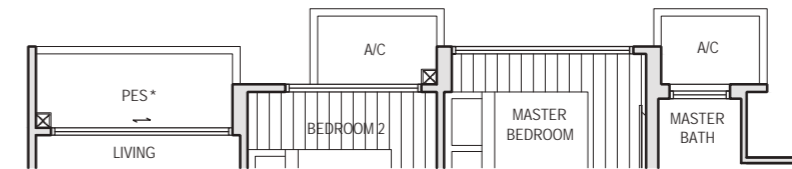
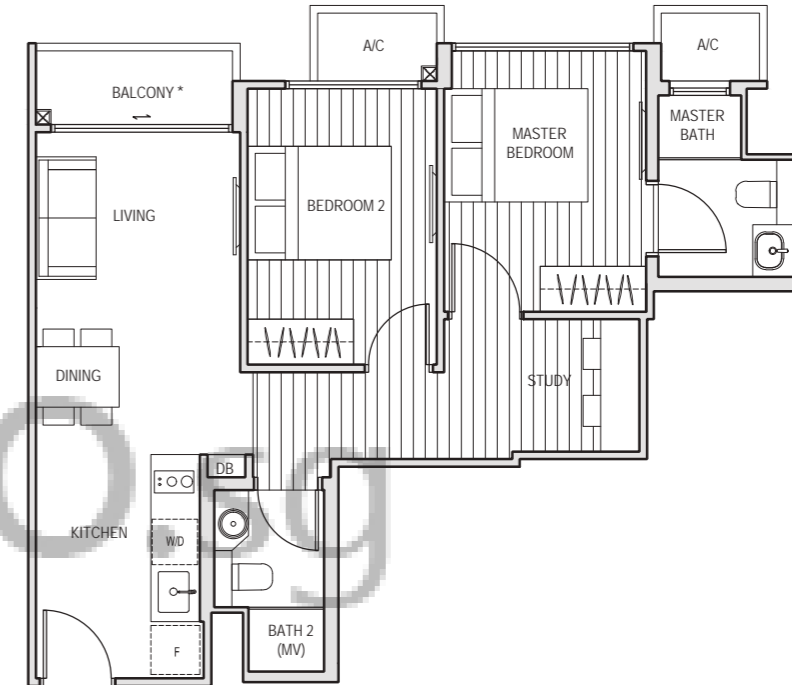


2 BEDROOM + STUDY

TYPE B1

64 sq m

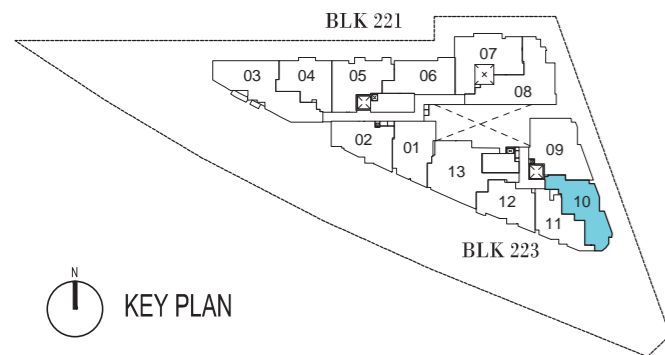
#02-05, #03-05, #04-05, #05-05



TYPE B1-G

64 sq m

#01-05

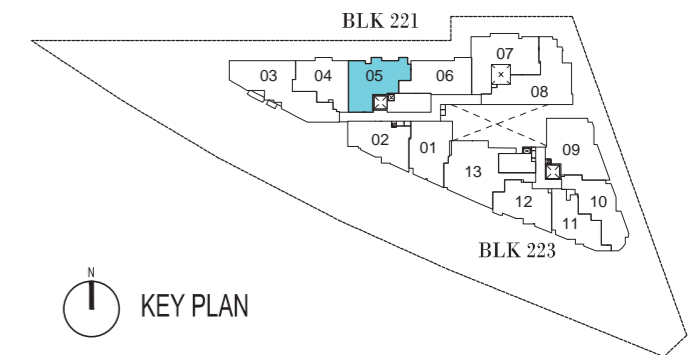


* The balcony / PES (Private Enclosed Space) shall not be enclosed. Only approved balcony screens are to be used. For illustration of the approved balcony screen, please refer to page 55 of this brochure.

All plans are subject to amendments as approved by the relevant authorities. Floor areas are approximate measurements and subject to final survey. Plans are not drawn to scale and do not form part of the contract.

* The balcony / PES (Private Enclosed Space) shall not be enclosed. Only approved balcony screens are to be used. For illustration of the approved balcony screen, please refer to page 55 of this brochure.

All plans are subject to amendments as approved by the relevant authorities. Floor areas are approximate measurements and subject to final survey. Plans are not drawn to scale and do not form part of the contract.



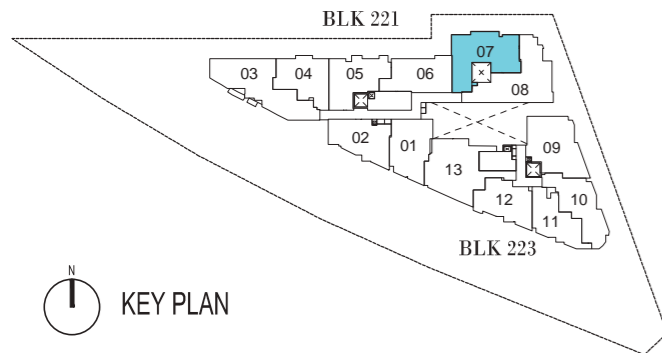
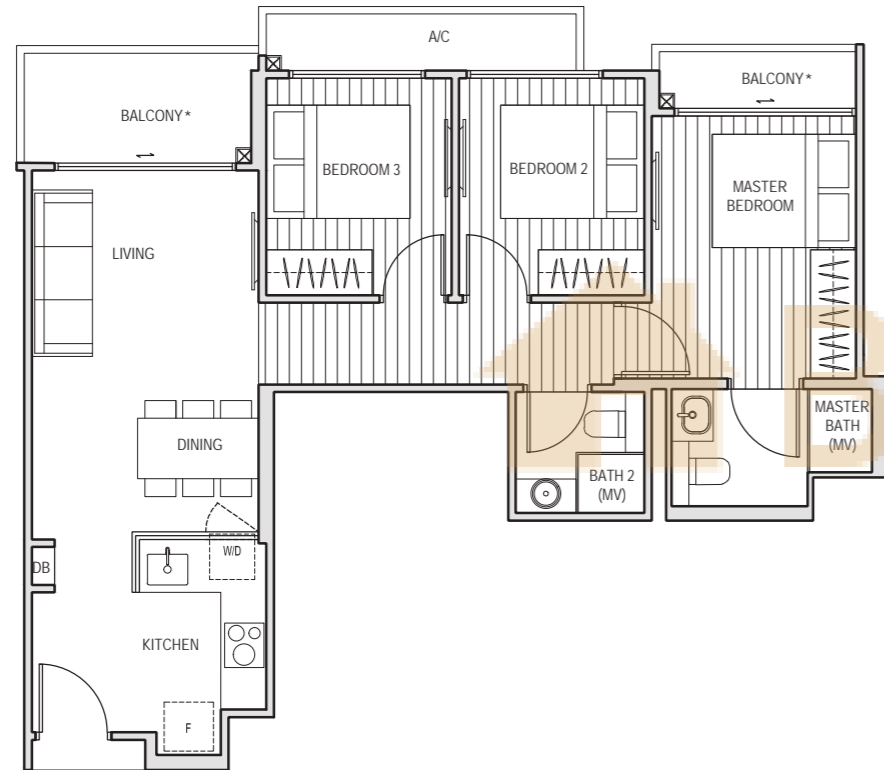
KEY PLAN

3 BEDROOM

TYPE C1

76 sq m

#02-07, #03-07, #04-07, #05-07



* The balcony / PES (Private Enclosed Space) shall not be enclosed. Only approved balcony screens are to be used. For illustration of the approved balcony screen, please refer to page 55 of this brochure.

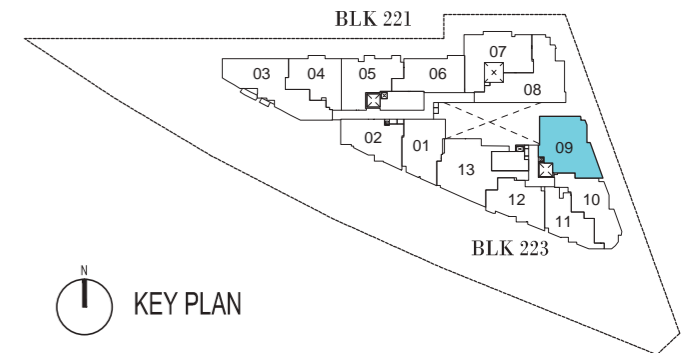
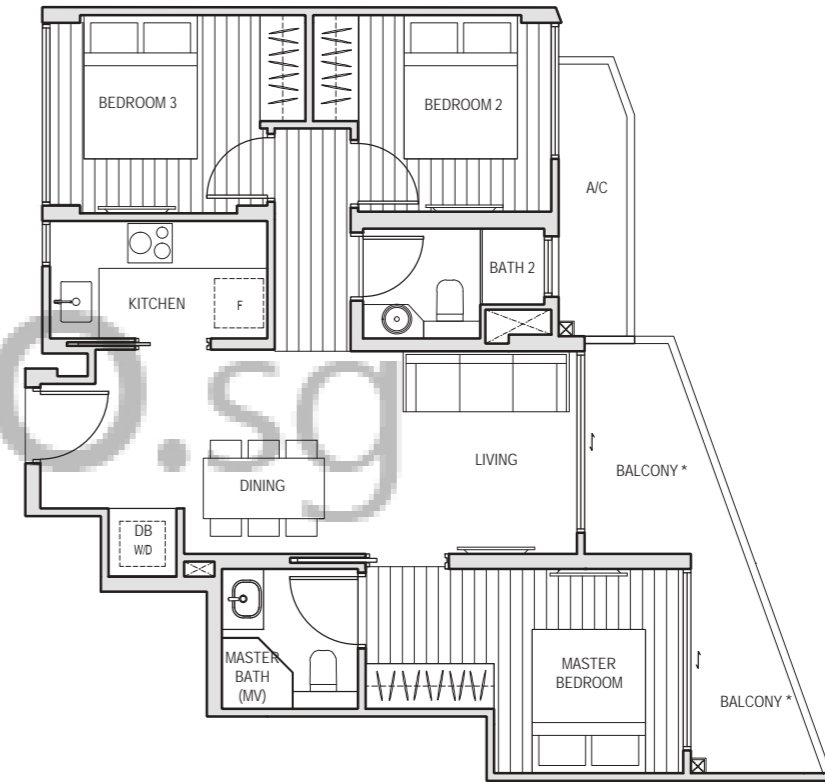
All plans are subject to amendments as approved by the relevant authorities. Floor areas are approximate measurements and subject to final survey. Plans are not drawn to scale and do not form part of the contract.

3 BEDROOM

TYPE C2

78 sq m

#02-09, #03-09, #04-09, #05-09



* The balcony / PES (Private Enclosed Space) shall not be enclosed. Only approved balcony screens are to be used. For illustration of the approved balcony screen, please refer to page 55 of this brochure.

All plans are subject to amendments as approved by the relevant authorities. Floor areas are approximate measurements and subject to final survey. Plans are not drawn to scale and do not form part of the contract.

BUYCONDO.SG

3 BEDROOM + GUEST ROOM

TYPE D1

84 sq m

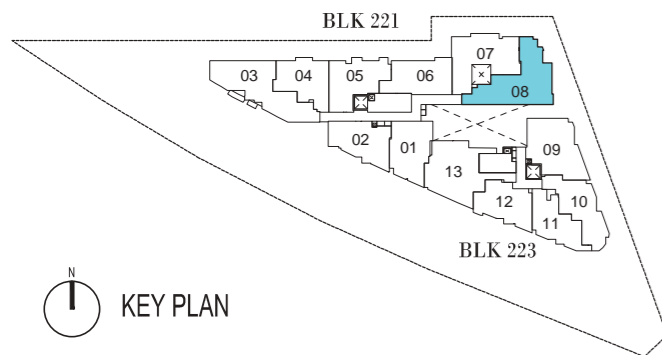
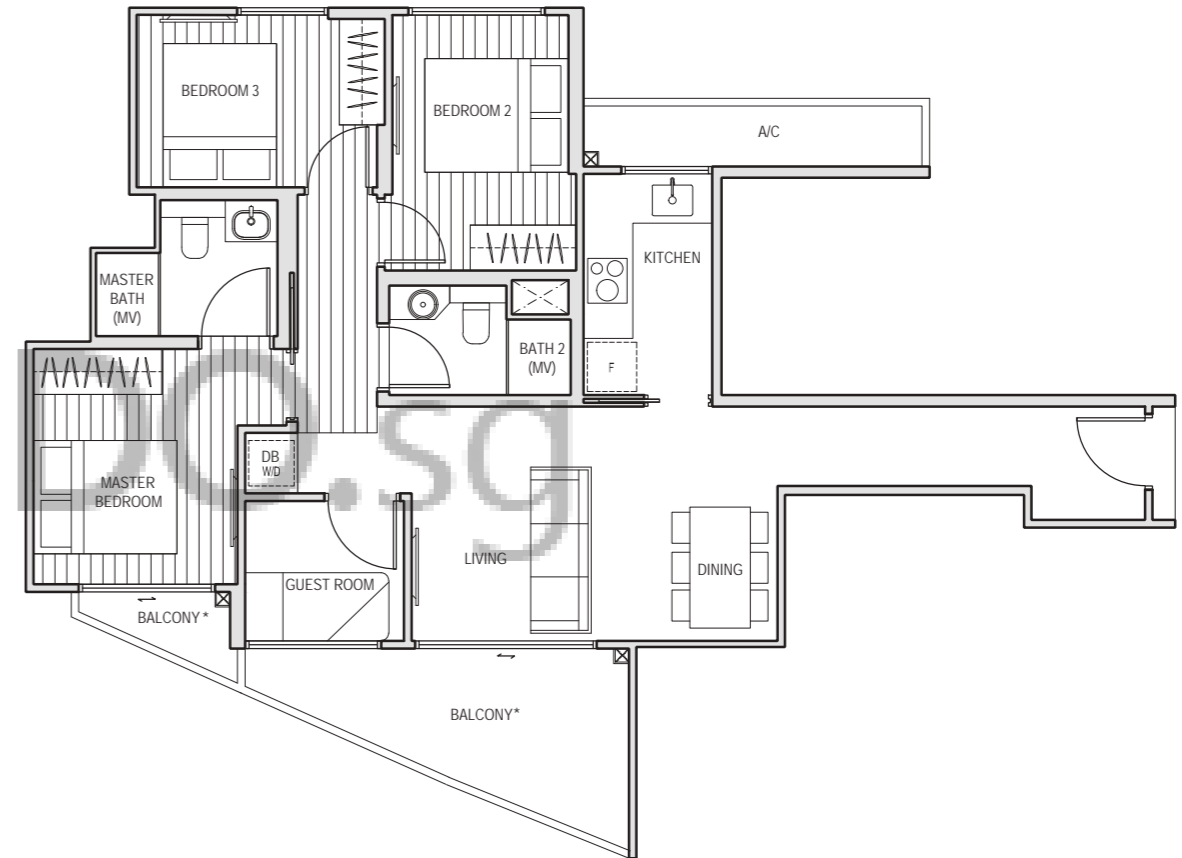
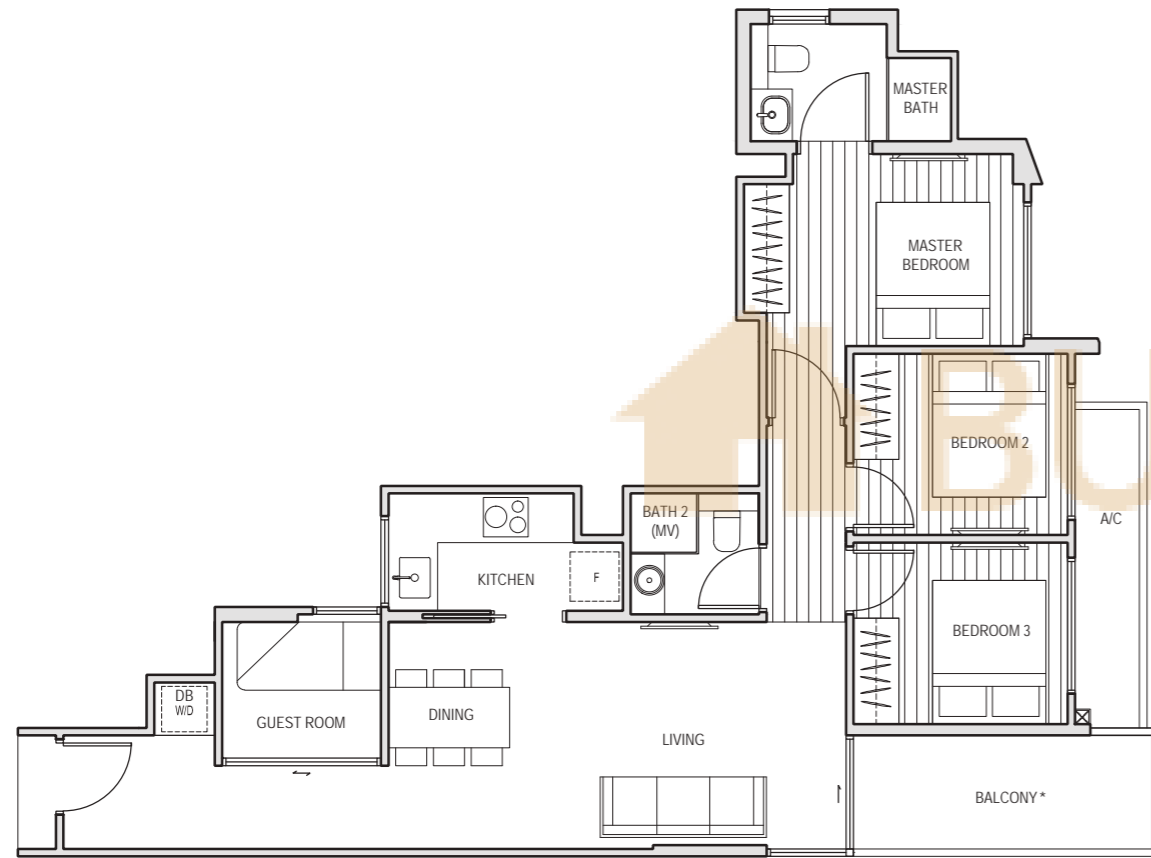
#02-08, #03-08, #04-08, #05-08

3 BEDROOM + GUEST ROOM

TYPE D2

91 sq m

#02-13, #03-13, #04-13, #05-13

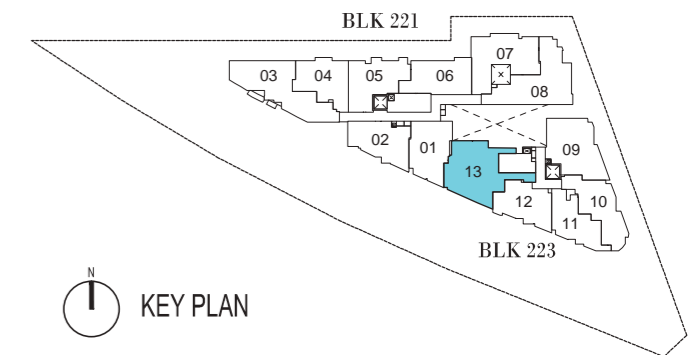


* The balcony / PES (Private Enclosed Space) shall not be enclosed. Only approved balcony screens are to be used. For illustration of the approved balcony screen, please refer to page 55 of this brochure.

All plans are subject to amendments as approved by the relevant authorities. Floor areas are approximate measurements and subject to final survey. Plans are not drawn to scale and do not form part of the contract.

* The balcony / PES (Private Enclosed Space) shall not be enclosed. Only approved balcony screens are to be used. For illustration of the approved balcony screen, please refer to page 55 of this brochure.

All plans are subject to amendments as approved by the relevant authorities. Floor areas are approximate measurements and subject to final survey. Plans are not drawn to scale and do not form part of the contract.



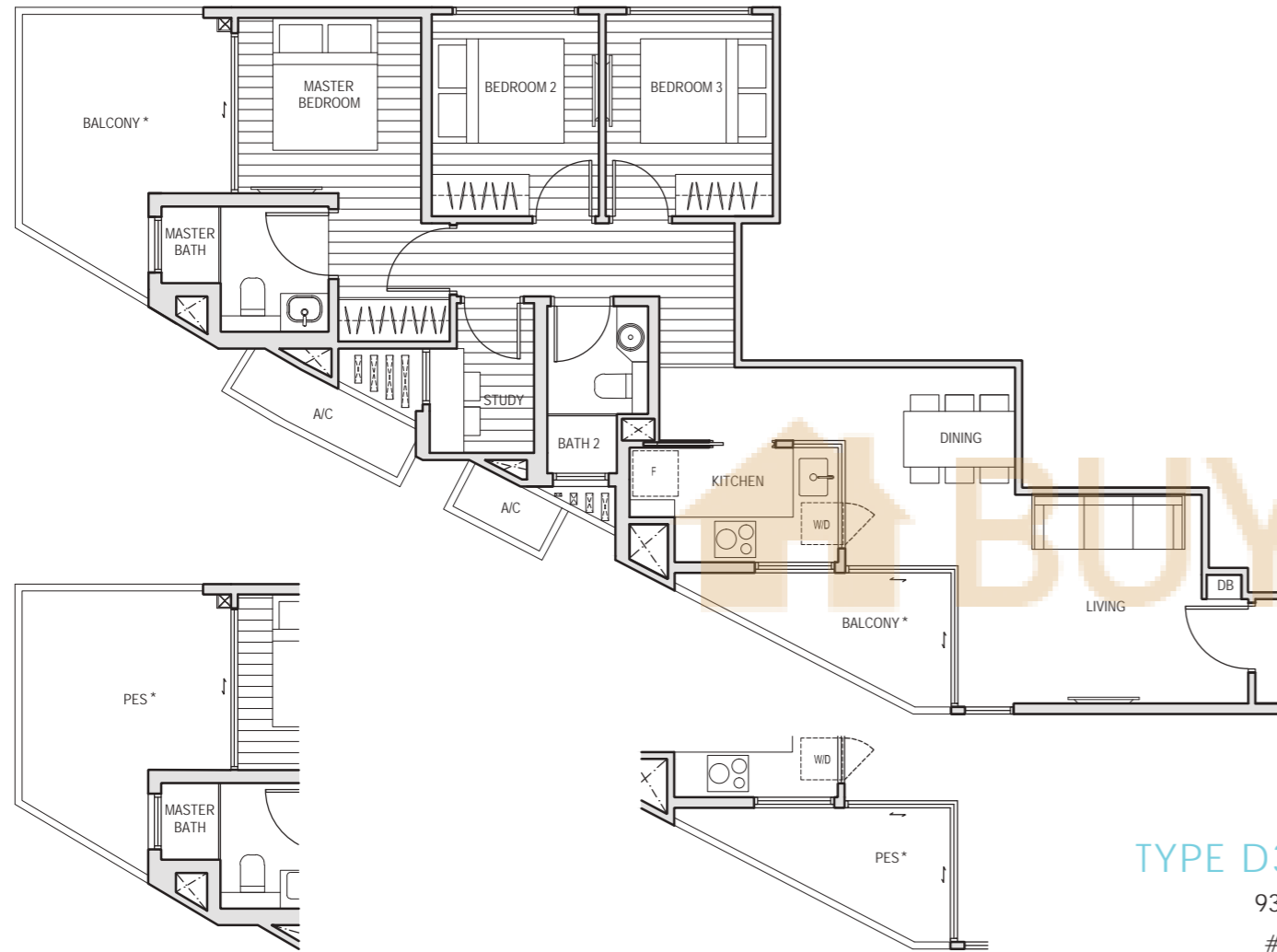
3 BEDROOM + STUDY

TYPE D3

93 sq m

#02-03, #03-03, #04-03, #05-03

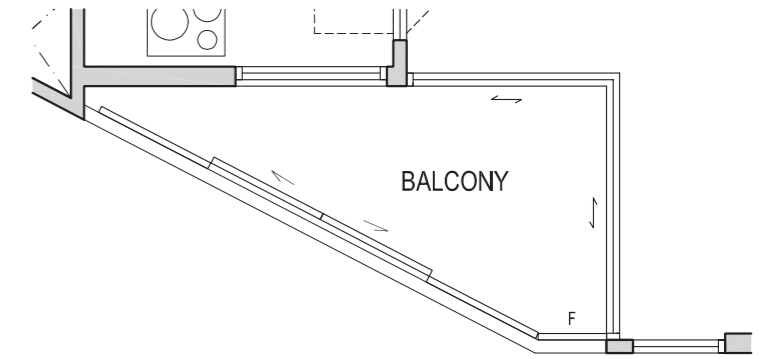
BALCONY SCREENING



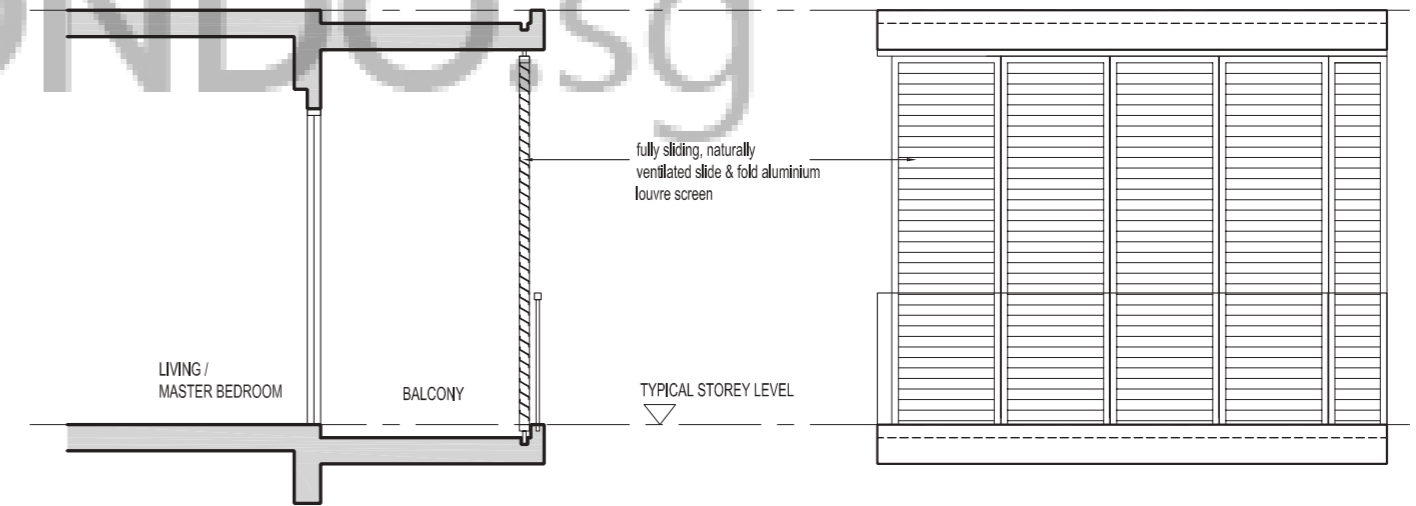
TYPE D3-G

93 sq m

#01-03



PLAN (IN FRONT OF LIVING-DINING)

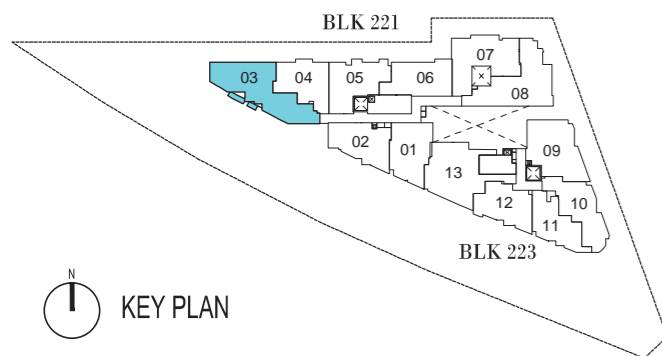


SECTION

FRONT ELEVATION

fully sliding, naturally ventilated slide & fold aluminium louvre screen

TYPICAL STOREY LEVEL



KEY PLAN

* The balcony / PES (Private Enclosed Space) shall not be enclosed. Only approved balcony screens are to be used. For illustration of the approved balcony screen, please refer to page 55 of this brochure.

All plans are subject to amendments as approved by the relevant authorities. Floor areas are approximate measurements and subject to final survey. Plans are not drawn to scale and do not form part of the contract.

This drawing is for reference only. The screen design is provided for aesthetic uniformity of the development. Materials to be aluminium with powder coated finish. Fixing details are by contractor and fixing shall not damage the existing waterproofing and structure. Owner shall verify all dimensions prior to fabrication and commencement work. Drawings are not to scale. The cost of screen and installation shall be borne by the owner.