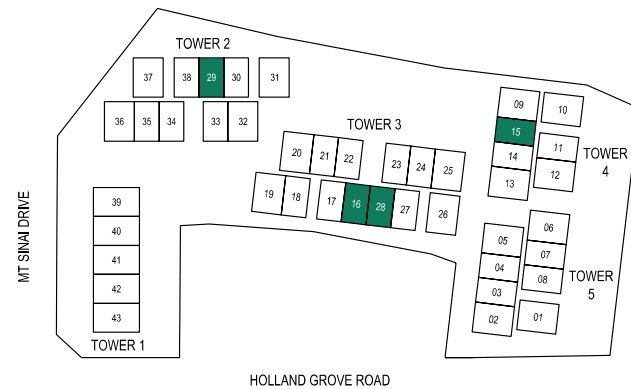
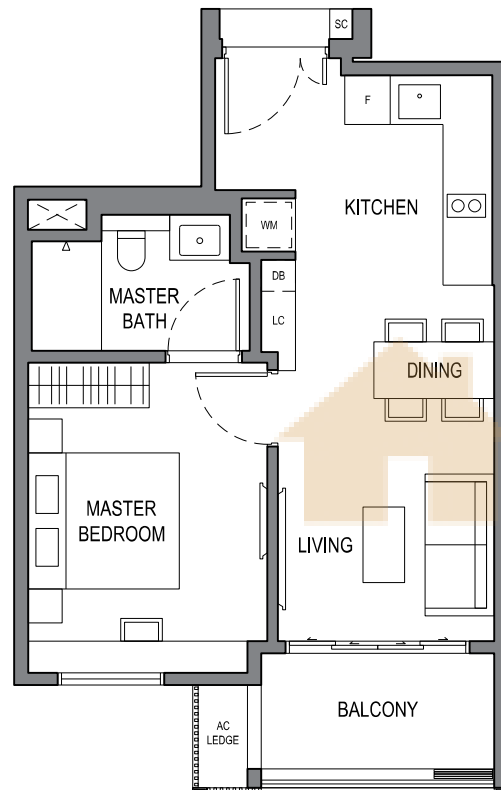


# 1 BEDROOM

## TYPE A1(a)

20, 22 & 26 HOLLAND GROVE ROAD  
 #02-15  
 #03-15  
 #02-16 (MIRRORED)  
 #03-16 (MIRRORED)  
 #02-28  
 #03-28  
 #02-29 (MIRRORED)  
 #03-29 (MIRRORED)



- DB DISTRIBUTION BOARD
- F FRIDGE
- LC LAUNDRY CABINET
- SC SHOE CABINET
- WM WASHER CUM DRYER



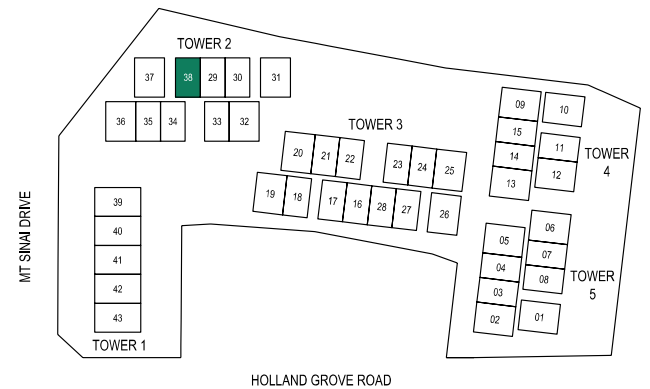
DISCLAIMER: THE ABOVE PLAN IS SUBJECT TO ANY AMENDMENTS, AS MAY BE APPROVED BY THE RELEVANT AUTHORITIES.

**KEY PLAN**  
 THIS KEY PLAN IS NOT TO SCALE

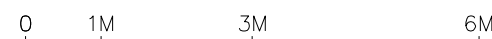
# 1 BEDROOM

## TYPE A1(b)

26 HOLLAND GROVE ROAD  
 #02-38  
 #03-38



- DB DISTRIBUTION BOARD
- F FRIDGE
- LC LAUNDRY CABINET
- SC SHOE CABINET
- WM WASHER CUM DRYER



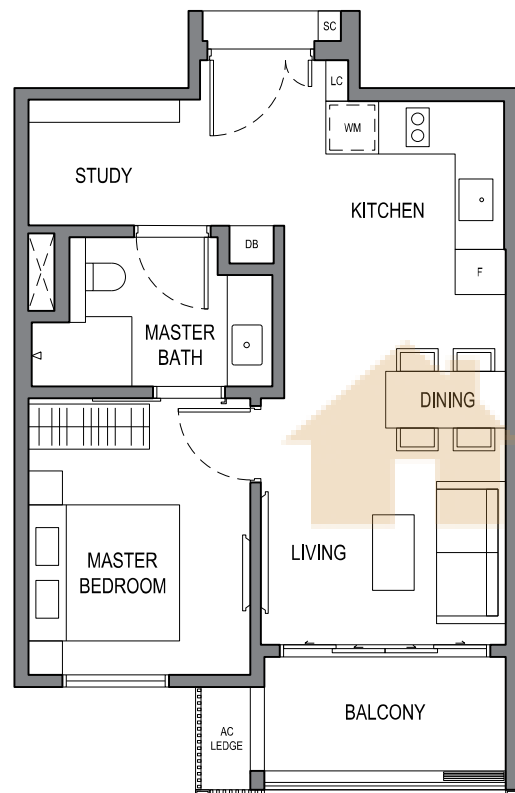
DISCLAIMER: THE ABOVE PLAN IS SUBJECT TO ANY AMENDMENTS, AS MAY BE APPROVED BY THE RELEVANT AUTHORITIES.

**KEY PLAN**  
 THIS KEY PLAN IS NOT TO SCALE

# 1 BEDROOM + STUDY

## TYPE A2(a)

18 HOLLAND GROVE ROAD  
 #02-04  
 #03-04  
 #03-07 (MIRRORED)  
 #03-08

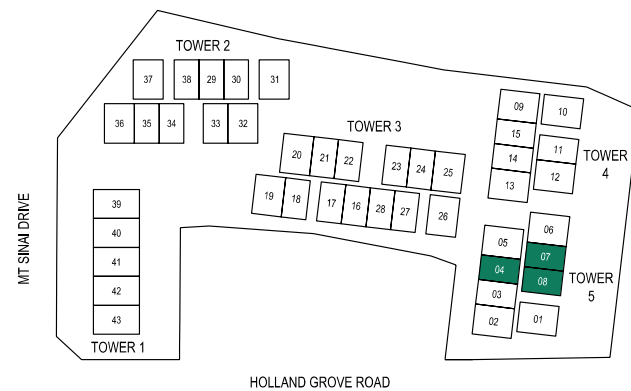


BUYCONDO.SG

- DB DISTRIBUTION BOARD
- F FRIDGE
- LC LAUNDRY CABINET
- SC SHOE CABINET
- WM WASHER CUM DRYER



DISCLAIMER: THE ABOVE PLAN IS SUBJECT TO ANY AMENDMENTS, AS MAY BE APPROVED BY THE RELEVANT AUTHORITIES.

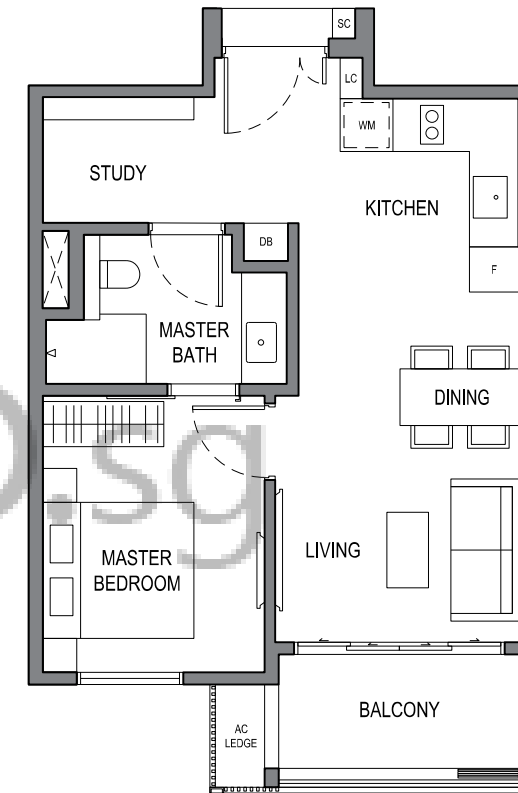


KEY PLAN  
 THIS KEY PLAN IS NOT TO SCALE

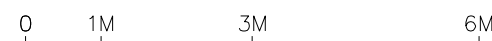
# 1 BEDROOM + STUDY

## TYPE A2(b)

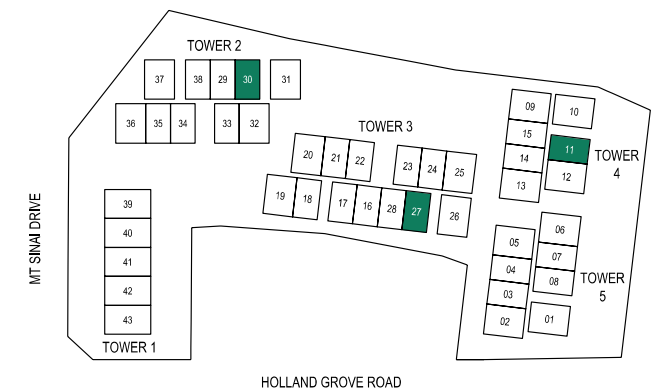
20, 22 & 26 HOLLAND GROVE ROAD  
 #03-11  
 #02-27  
 #03-27  
 #02-30 (MIRRORED)  
 #03-30 (MIRRORED)



- DB DISTRIBUTION BOARD
- F FRIDGE
- LC LAUNDRY CABINET
- SC SHOE CABINET
- WM WASHER CUM DRYER



DISCLAIMER: THE ABOVE PLAN IS SUBJECT TO ANY AMENDMENTS, AS MAY BE APPROVED BY THE RELEVANT AUTHORITIES.

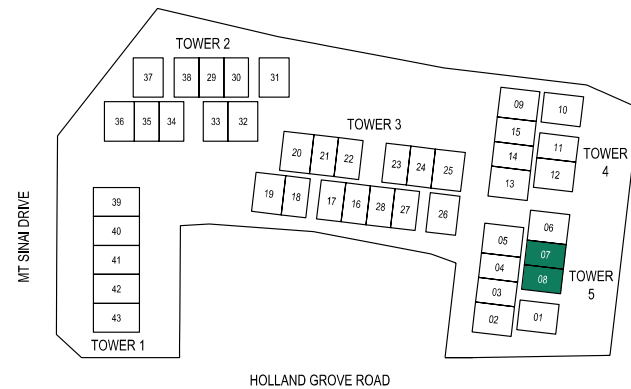
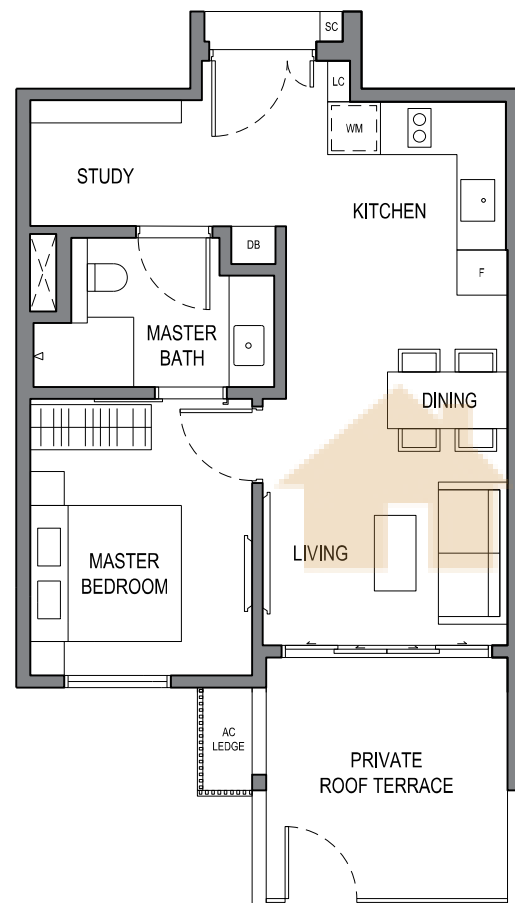


KEY PLAN  
 THIS KEY PLAN IS NOT TO SCALE

# 1 BEDROOM + STUDY

## TYPE A3(a)

18 HOLLAND GROVE ROAD  
 #02-07 (MIRRORED)  
 #02-08



- DB DISTRIBUTION BOARD
- F FRIDGE
- LC LAUNDRY CABINET
- SC SHOE CABINET
- WM WASHER CUM DRYER



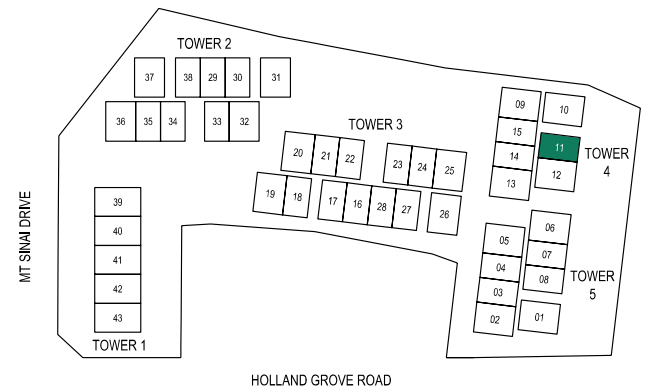
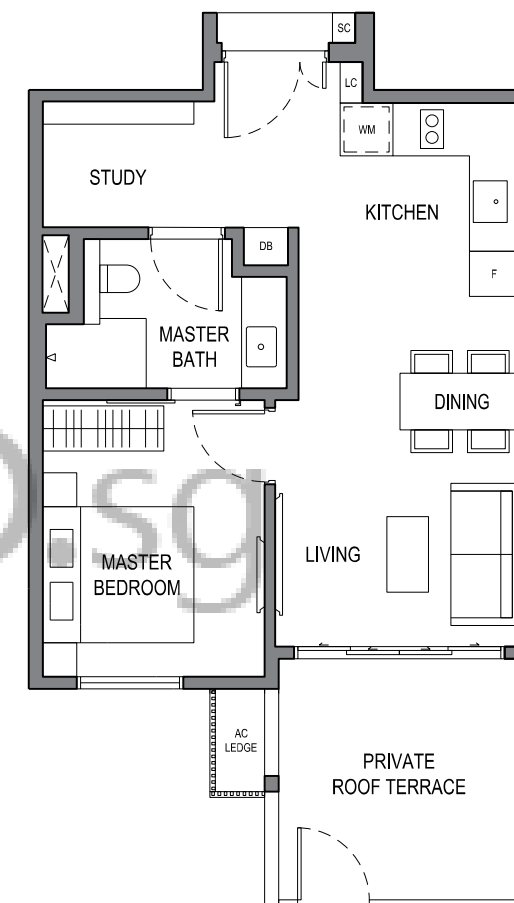
DISCLAIMER: THE ABOVE PLAN IS SUBJECT TO ANY AMENDMENTS,  
 AS MAY BE APPROVED BY THE RELEVANT AUTHORITIES.

**KEY PLAN**  
 THIS KEY PLAN IS NOT TO SCALE

# 1 BEDROOM + STUDY

## TYPE A3(b)

20 HOLLAND GROVE ROAD  
 #02-11



- DB DISTRIBUTION BOARD
- F FRIDGE
- LC LAUNDRY CABINET
- SC SHOE CABINET
- WM WASHER CUM DRYER



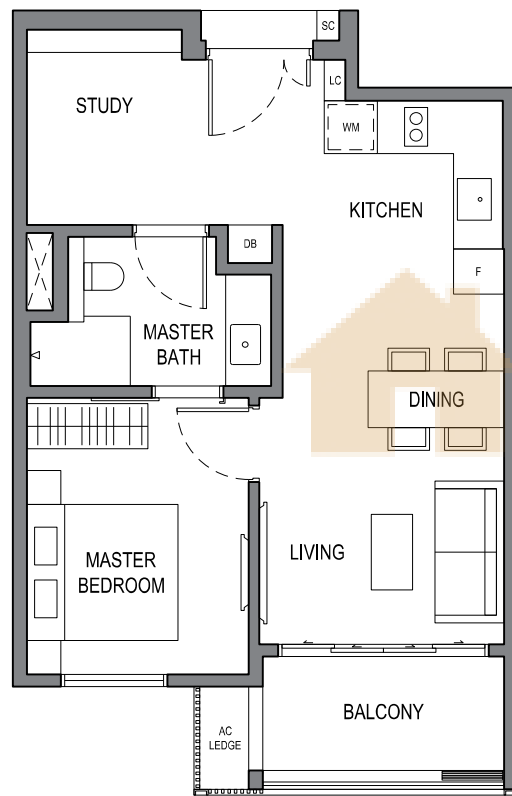
DISCLAIMER: THE ABOVE PLAN IS SUBJECT TO ANY AMENDMENTS,  
 AS MAY BE APPROVED BY THE RELEVANT AUTHORITIES.

**KEY PLAN**  
 THIS KEY PLAN IS NOT TO SCALE

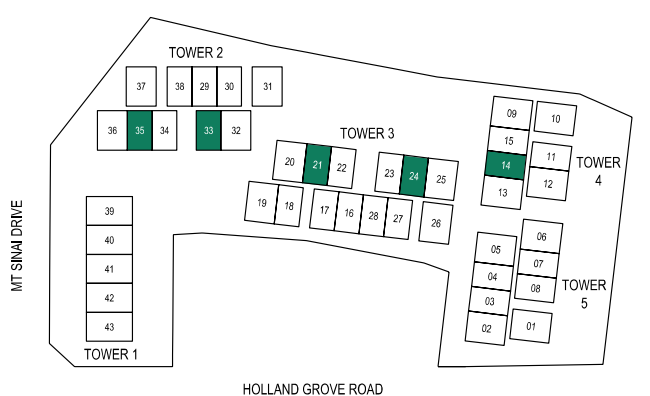
# 1 BEDROOM + STUDY

## TYPE A4(a)

20, 22 & 26 HOLLAND GROVE ROAD  
 #02-14 (MIRRORED)  
 #03-14 (MIRRORED)  
 #02-21 (MIRRORED)  
 #03-21 (MIRRORED)  
 #02-24  
 #03-24  
 #02-33 (MIRRORED)  
 #03-33 (MIRRORED)  
 #02-35  
 #03-35



BUYCONDO.SG



- DB DISTRIBUTION BOARD
- F FRIDGE
- LC LAUNDRY CABINET
- SC SHOE CABINET
- WM WASHER CUM DRYER



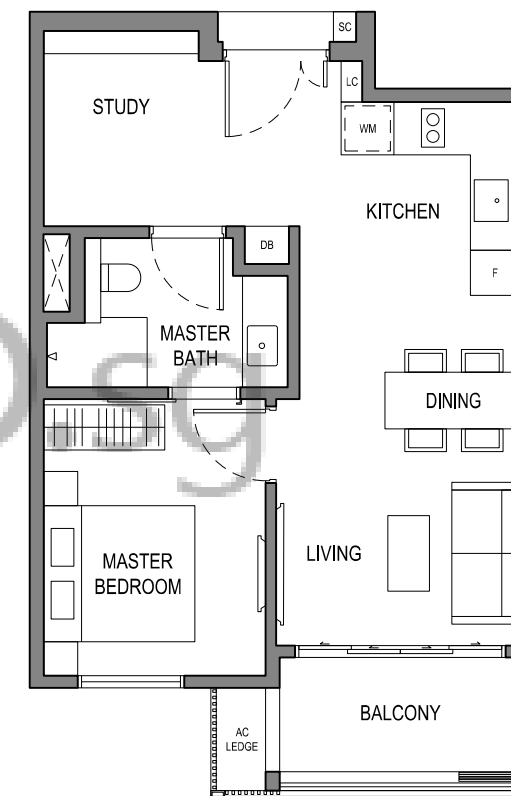
DISCLAIMER: THE ABOVE PLAN IS SUBJECT TO ANY AMENDMENTS, AS MAY BE APPROVED BY THE RELEVANT AUTHORITIES.

KEY PLAN  
 THIS KEY PLAN IS NOT TO SCALE

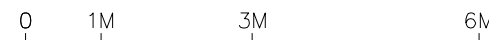
# 1 BEDROOM + STUDY

## TYPE A4(b)

22 HOLLAND GROVE ROAD  
 #02-17 (MIRRORED)  
 #03-17 (MIRRORED)  
 #02-18  
 #03-18



- DB DISTRIBUTION BOARD
- F FRIDGE
- LC LAUNDRY CABINET
- SC SHOE CABINET
- WM WASHER CUM DRYER



DISCLAIMER: THE ABOVE PLAN IS SUBJECT TO ANY AMENDMENTS, AS MAY BE APPROVED BY THE RELEVANT AUTHORITIES.

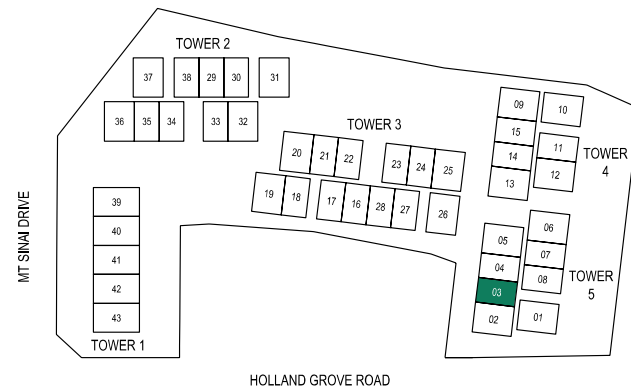
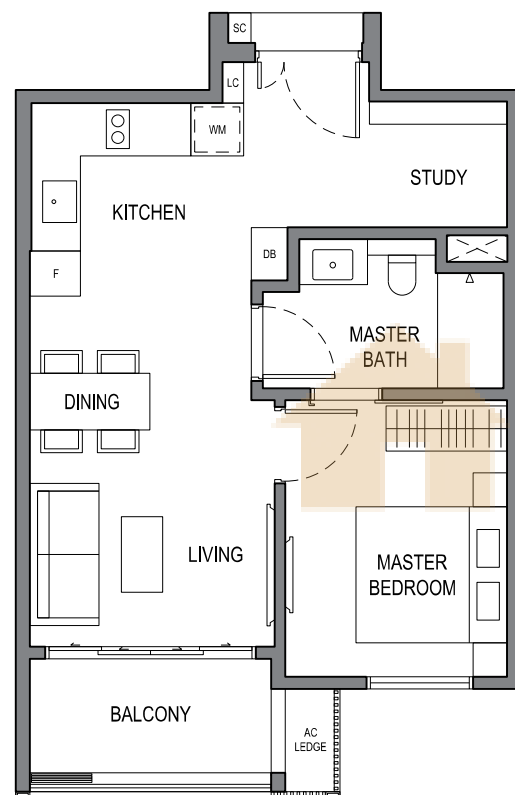
KEY PLAN  
 THIS KEY PLAN IS NOT TO SCALE



# 1 BEDROOM + STUDY

## TYPE A5

18 HOLLAND GROVE ROAD  
#02-03  
#03-03



- DB DISTRIBUTION BOARD
- F FRIDGE
- LC LAUNDRY CABINET
- SC SHOE CABINET
- WM WASHER CUM DRYER

0 1M 3M 6M

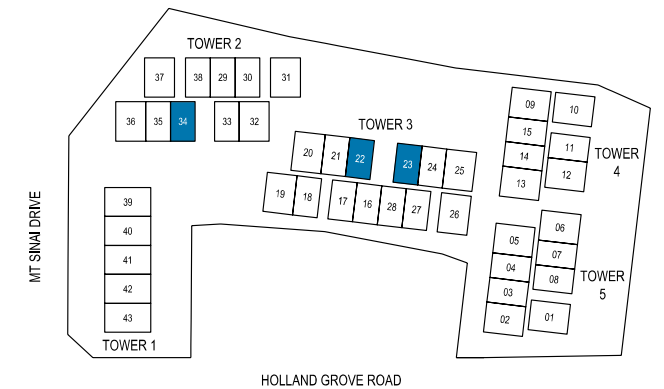
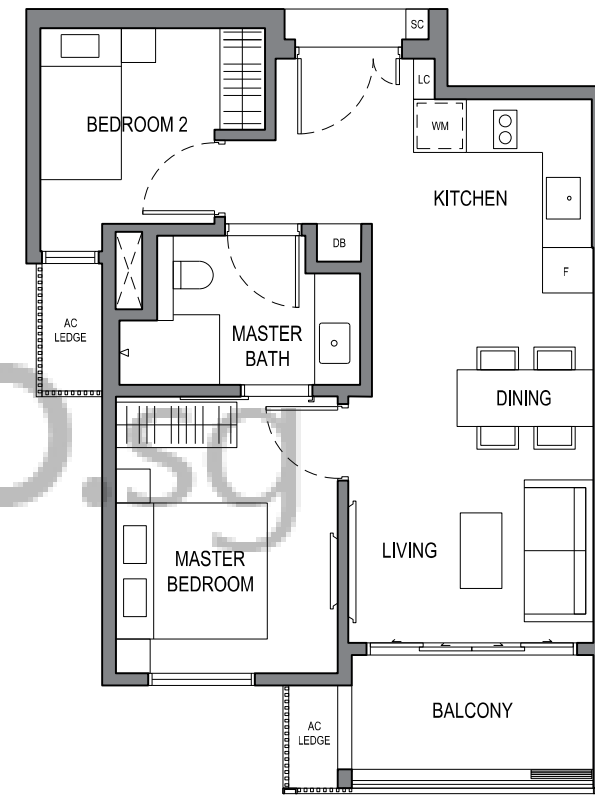
DISCLAIMER: THE ABOVE PLAN IS SUBJECT TO ANY AMENDMENTS,  
AS MAY BE APPROVED BY THE RELEVANT AUTHORITIES.

**KEY PLAN**  
THIS KEY PLAN IS NOT TO SCALE

# 2 BEDROOM

## TYPE B1

22 & 26 HOLLAND GROVE ROAD  
#02-22  
#03-22  
#02-23 (MIRRORED)  
#03-23 (MIRRORED)  
#02-34 (MIRRORED)  
#03-34 (MIRRORED)



- DB DISTRIBUTION BOARD
- F FRIDGE
- LC LAUNDRY CABINET
- SC SHOE CABINET
- WM WASHER CUM DRYER

0 1M 3M 6M

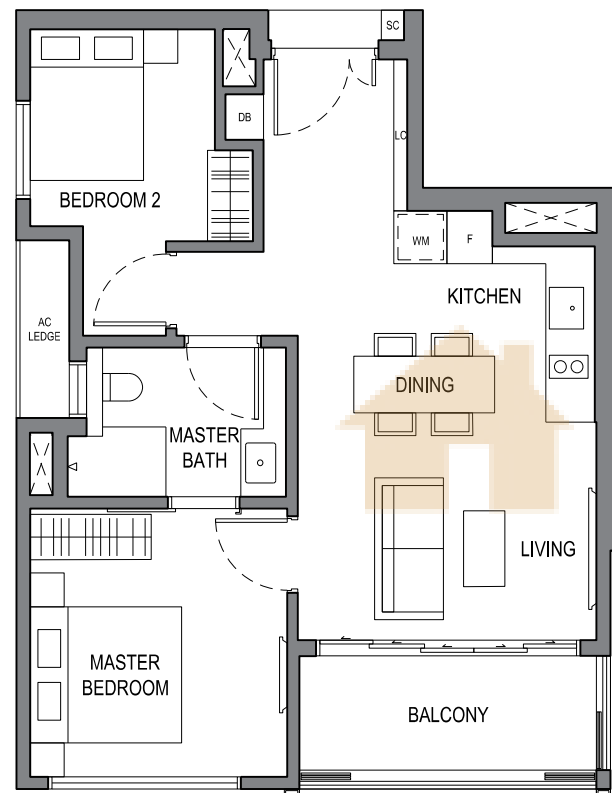
DISCLAIMER: THE ABOVE PLAN IS SUBJECT TO ANY AMENDMENTS,  
AS MAY BE APPROVED BY THE RELEVANT AUTHORITIES.

**KEY PLAN**  
THIS KEY PLAN IS NOT TO SCALE

## 2 BEDROOM

### TYPE B2

18 HOLLAND GROVE ROAD  
#03-01

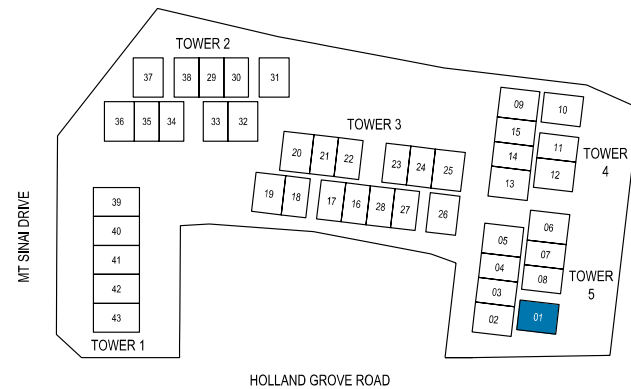


BUYCONDOS.SG

- DB DISTRIBUTION BOARD
- F FRIDGE
- LC LAUNDRY CABINET
- SC SHOE CABINET
- WM WASHER CUM DRYER



DISCLAIMER: THE ABOVE PLAN IS SUBJECT TO ANY AMENDMENTS,  
AS MAY BE APPROVED BY THE RELEVANT AUTHORITIES.

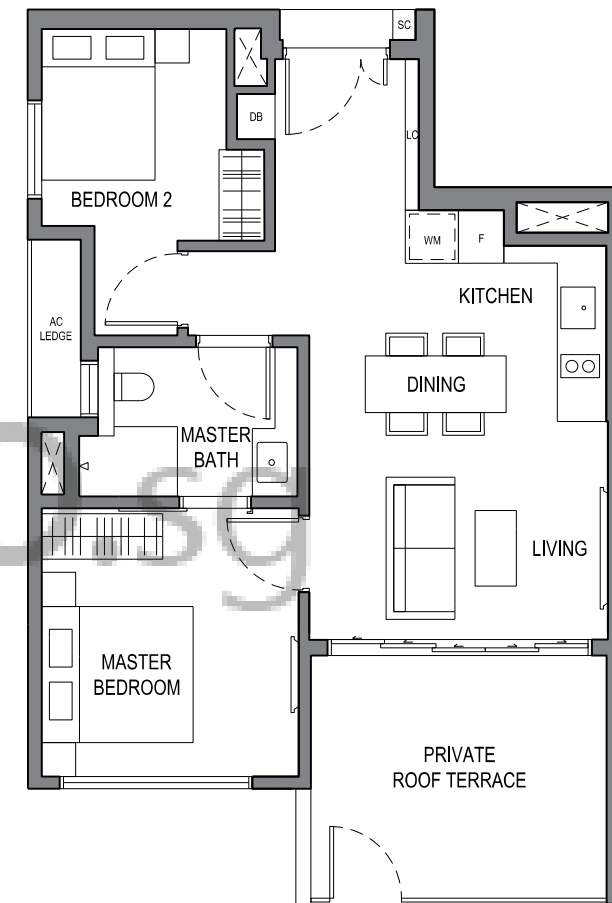


**KEY PLAN**  
THIS KEY PLAN IS NOT TO SCALE

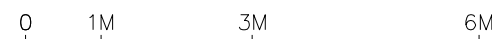
## 2 BEDROOM

### TYPE B3

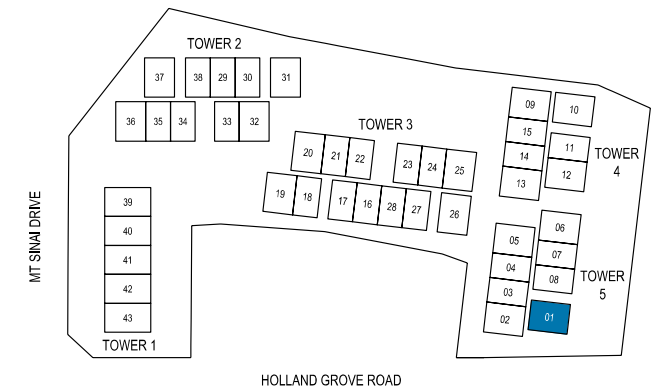
18 HOLLAND GROVE ROAD  
#02-01



- DB DISTRIBUTION BOARD
- F FRIDGE
- LC LAUNDRY CABINET
- SC SHOE CABINET
- WM WASHER CUM DRYER



DISCLAIMER: THE ABOVE PLAN IS SUBJECT TO ANY AMENDMENTS,  
AS MAY BE APPROVED BY THE RELEVANT AUTHORITIES.

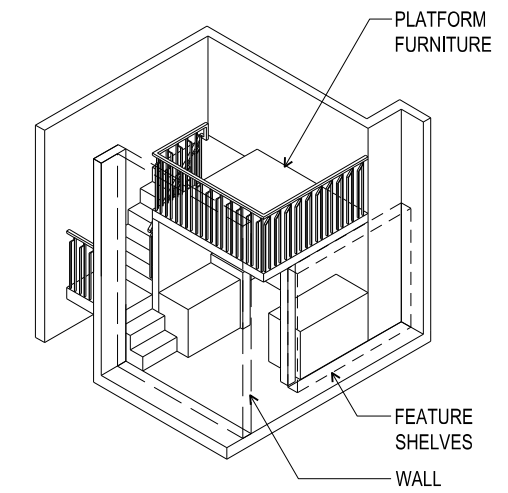
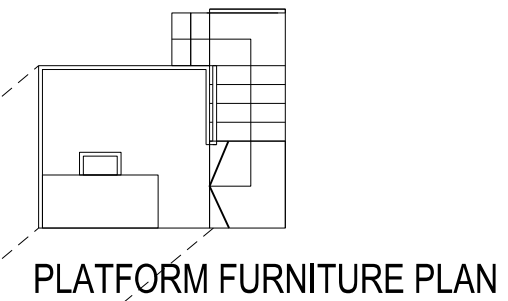
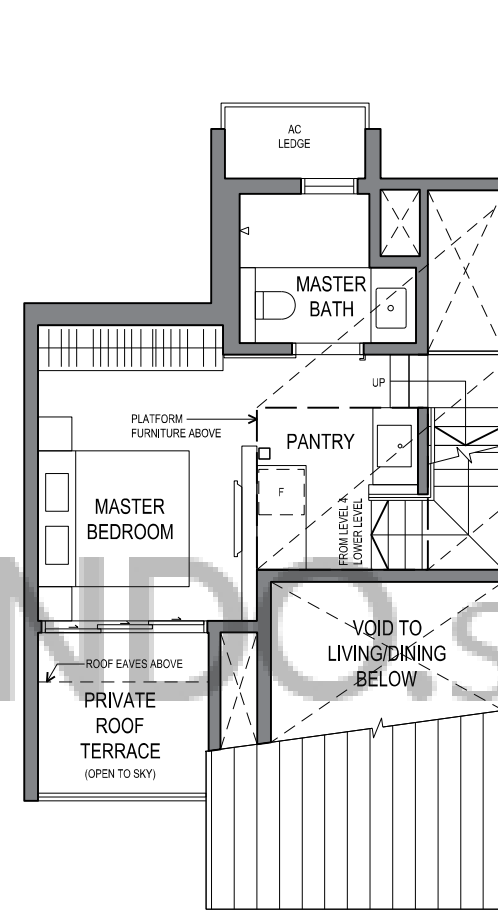
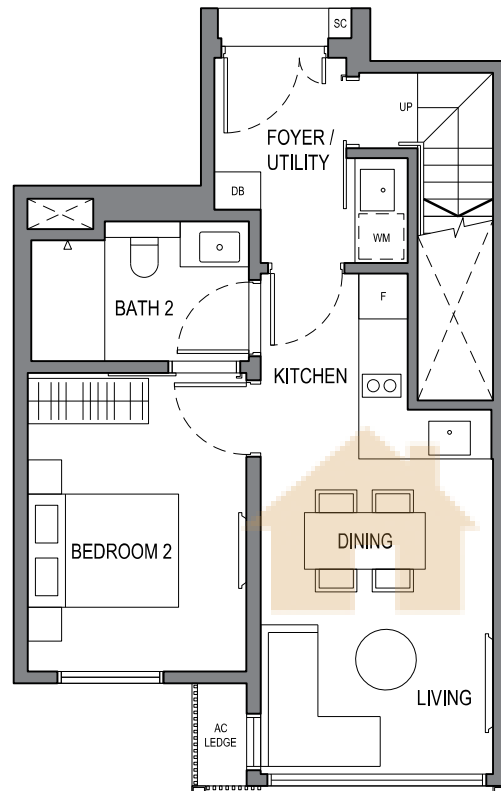


**KEY PLAN**  
THIS KEY PLAN IS NOT TO SCALE

# 2 BEDROOM DUAL-KEY

## TYPE B4(dk)

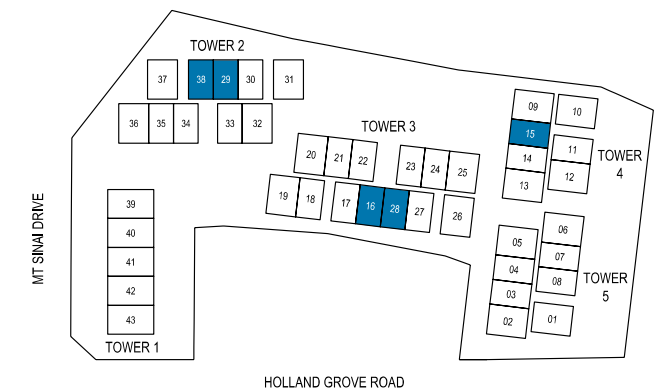
20, 22 & 26 HOLLAND GROVE ROAD  
 #04-15  
 #04-16 (MIRRORED)  
 #04-28  
 #04-29 (MIRRORED)  
 #04-38



- DB DISTRIBUTION BOARD
- F FRIDGE
- SC SHOE CABINET
- WM WASHER CUM DRYER



DISCLAIMER: THE ABOVE PLAN IS SUBJECT TO ANY AMENDMENTS,  
 AS MAY BE APPROVED BY THE RELEVANT AUTHORITIES.



# 2 BEDROOM DUAL-KEY

## TYPE B5(dk)(a)

18, 20, 22 & 26 HOLLAND GROVE ROAD

#04-04

#04-07 (MIRRORED)

#04-08

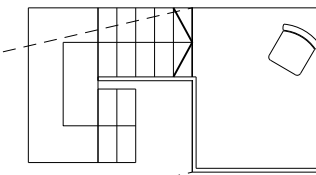
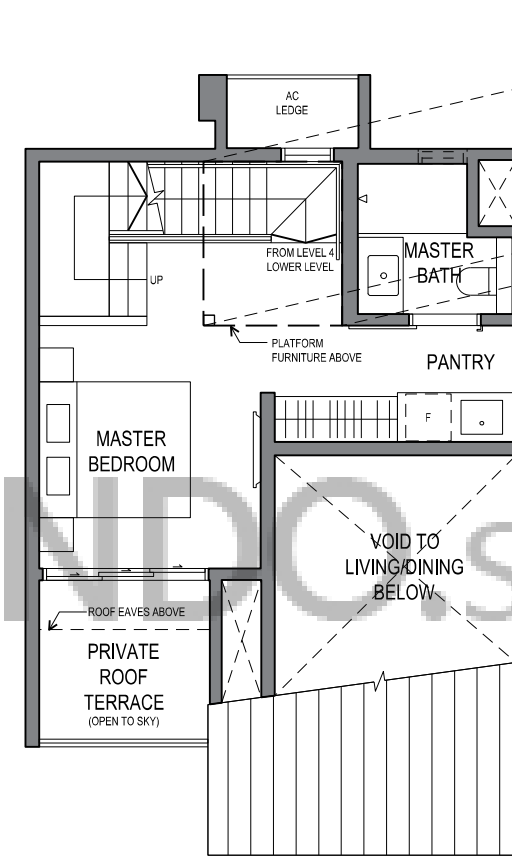
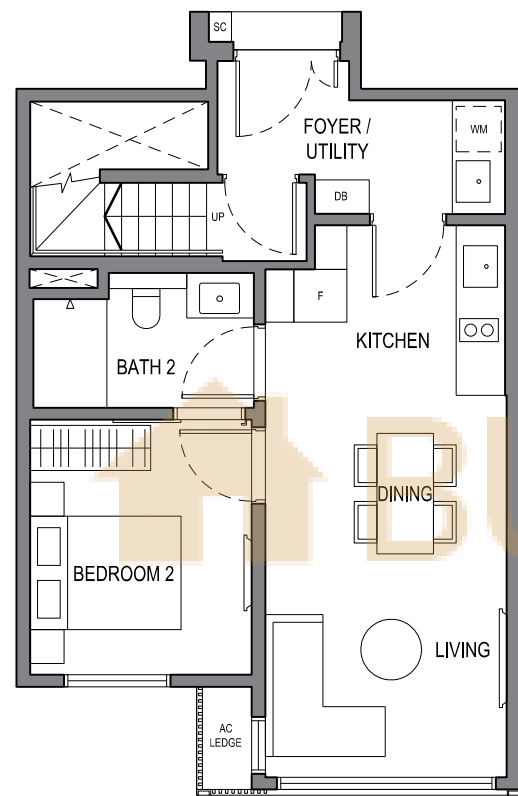
#04-14 (MIRRORED)

#04-21 (MIRRORED)

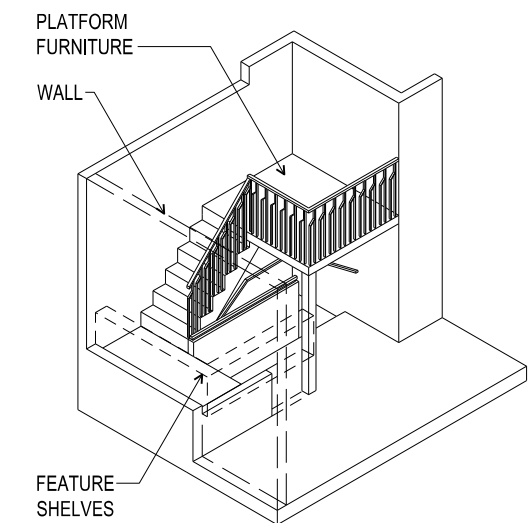
#04-24

#04-33 (MIRRORED)

#04-35



PLATFORM FURNITURE PLAN

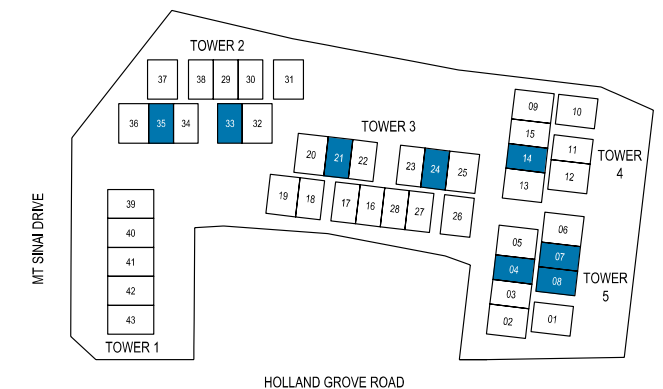


ISOMETRIC  
NOT TO SCALE

- DB DISTRIBUTION BOARD
- F FRIDGE
- SC SHOE CABINET
- WM WASHER CUM DRYER



DISCLAIMER: THE ABOVE PLAN IS SUBJECT TO ANY AMENDMENTS, AS MAY BE APPROVED BY THE RELEVANT AUTHORITIES.



HOLLAND GROVE ROAD

MT SINAI DRIVE

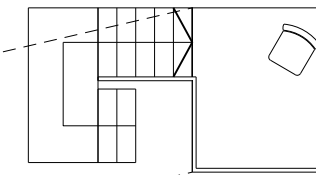
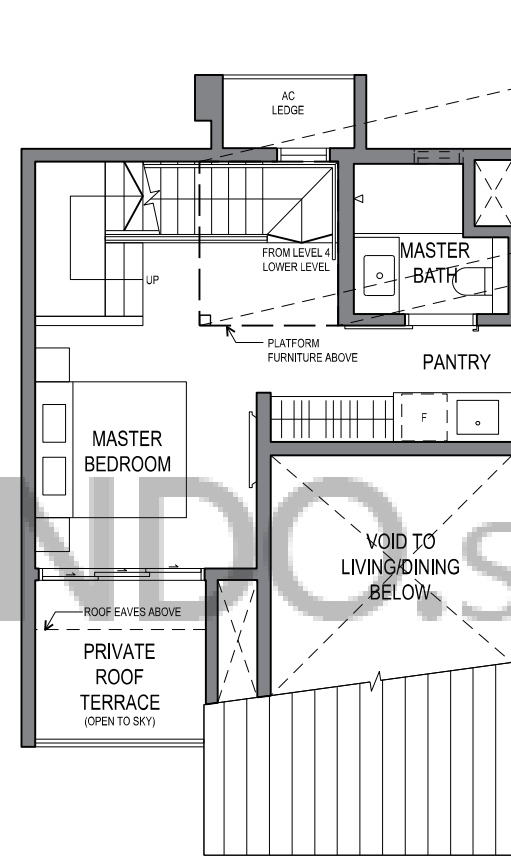
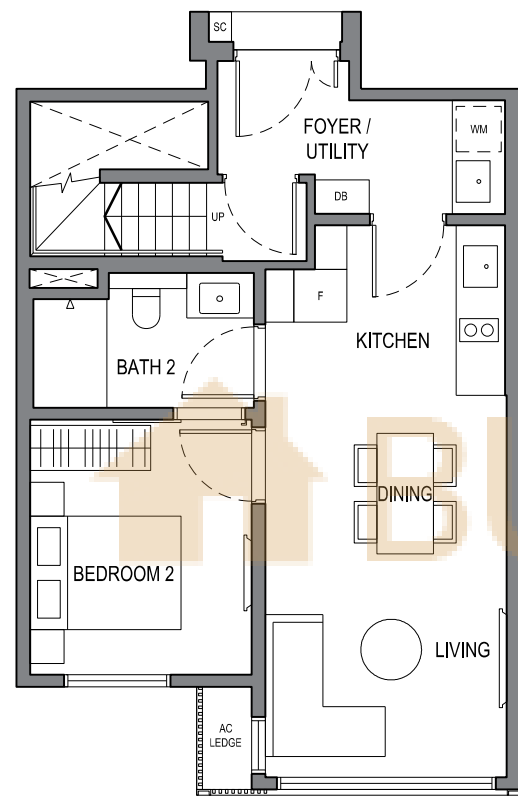


KEY PLAN  
THIS KEY PLAN IS NOT TO SCALE

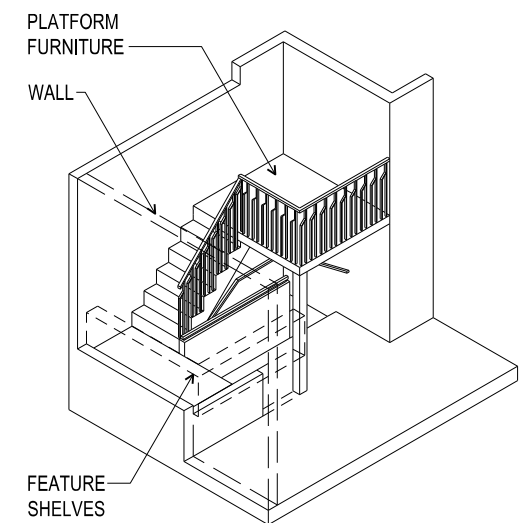
# 2 BEDROOM DUAL-KEY

## TYPE B5(dk)(b)

20, 22 & 26 HOLLAND GROVE ROAD  
 #04-11  
 #04-17 (MIRRORED)  
 #04-18  
 #04-27  
 #04-30 (MIRRORED)



PLATFORM FURNITURE PLAN

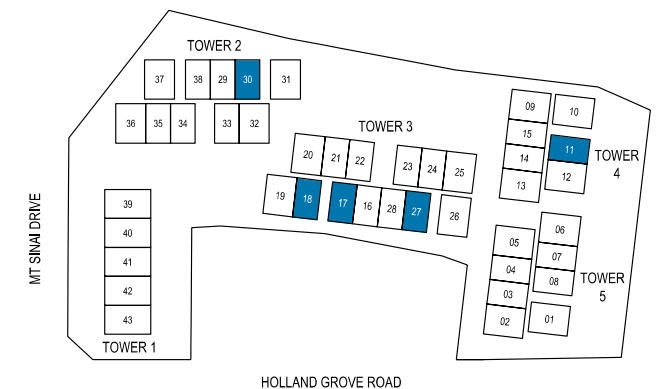


ISOMETRIC  
NOT TO SCALE

- DB DISTRIBUTION BOARD
- F FRIDGE
- SC SHOE CABINET
- WM WASHER CUM DRYER



DISCLAIMER: THE ABOVE PLAN IS SUBJECT TO ANY AMENDMENTS, AS MAY BE APPROVED BY THE RELEVANT AUTHORITIES.



HOLLAND GROVE ROAD

MT SINAI DRIVE



KEY PLAN  
THIS KEY PLAN IS NOT TO SCALE

# 2 BEDROOM DUAL-KEY

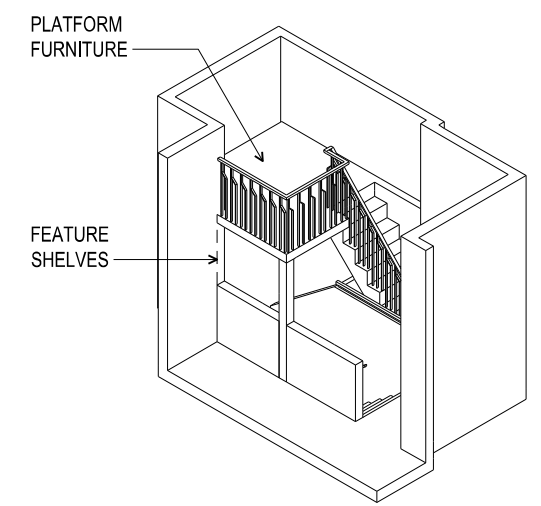
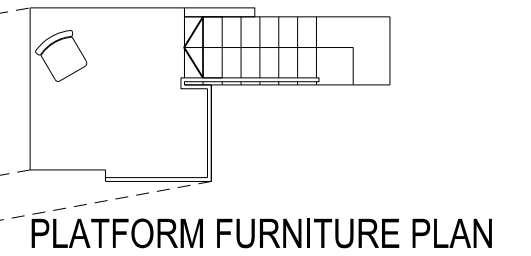
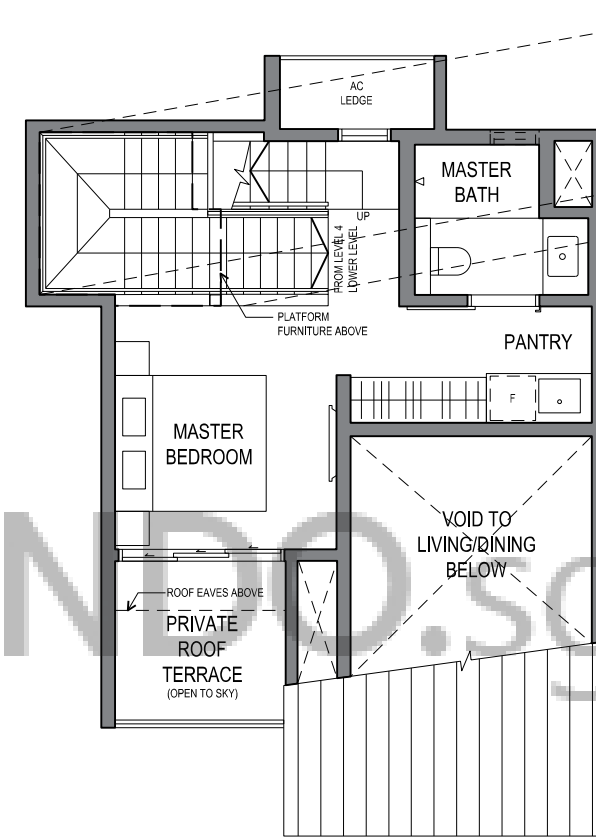
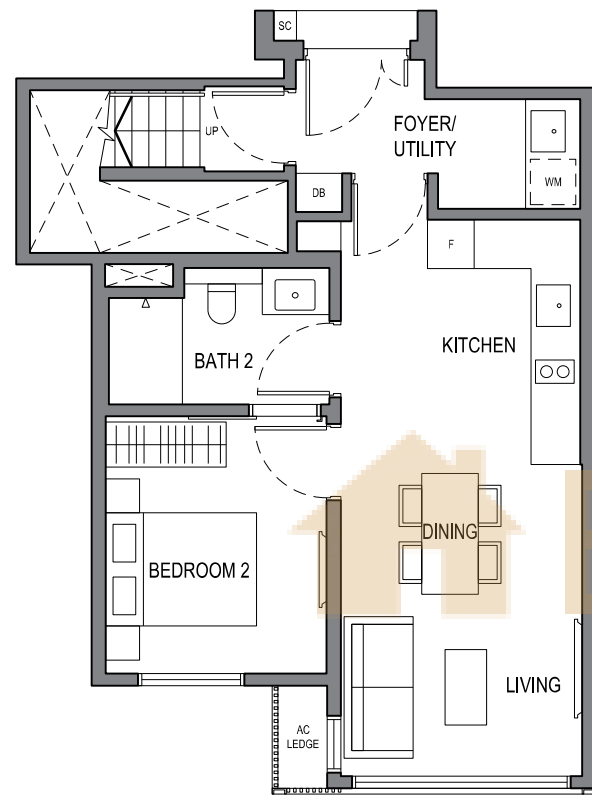
## TYPE B6(dk)

22 & 26 HOLLAND GROVE ROAD

#04-22

#04-23 (MIRRORED)

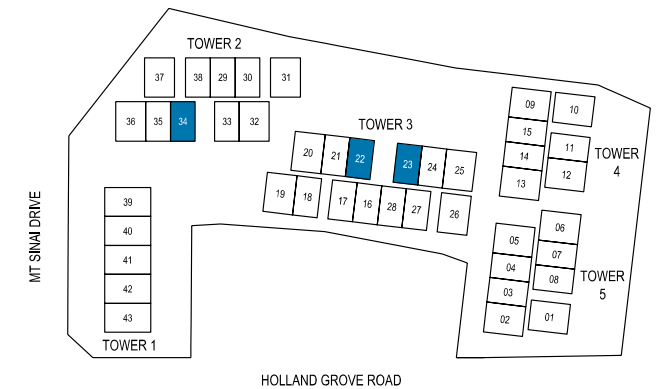
#04-34 (MIRRORED)



- DB DISTRIBUTION BOARD
- F FRIDGE
- SC SHOE CABINET
- WM WASHER CUM DRYER

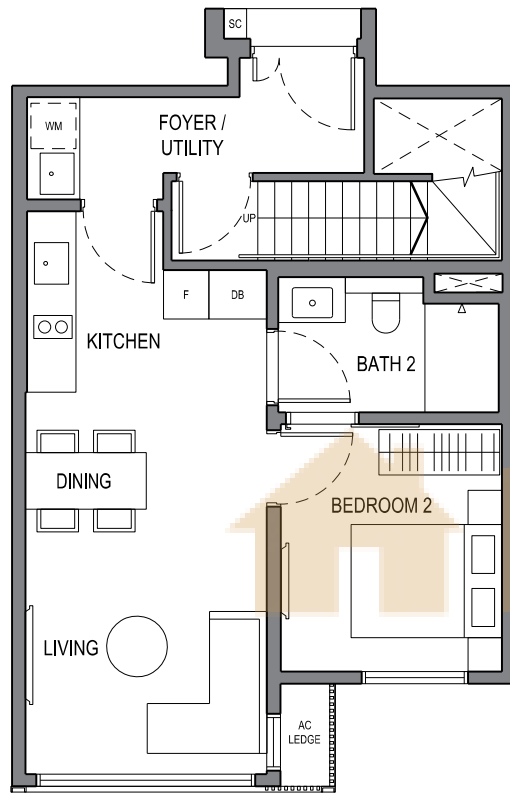


DISCLAIMER: THE ABOVE PLAN IS SUBJECT TO ANY AMENDMENTS, AS MAY BE APPROVED BY THE RELEVANT AUTHORITIES.

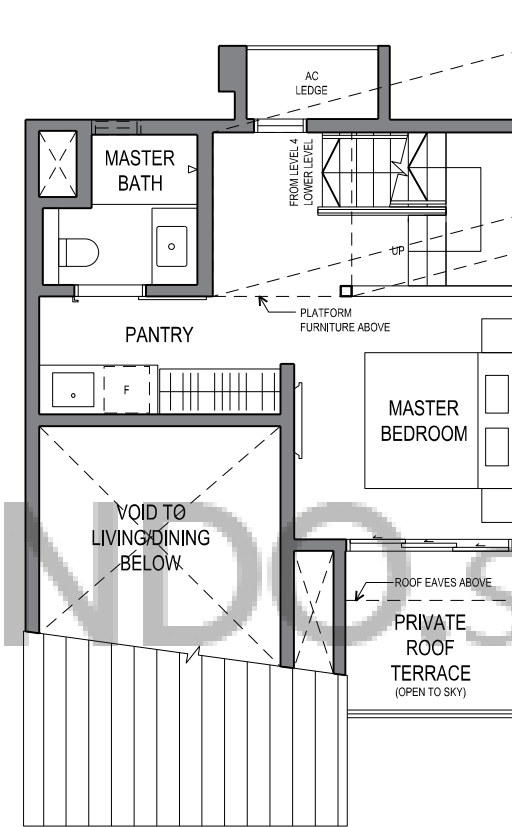


# 2 BEDROOM DUAL-KEY

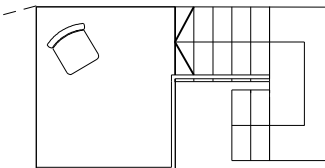
**TYPE B7(dk)**  
 18 HOLLAND GROVE ROAD  
 #04-03



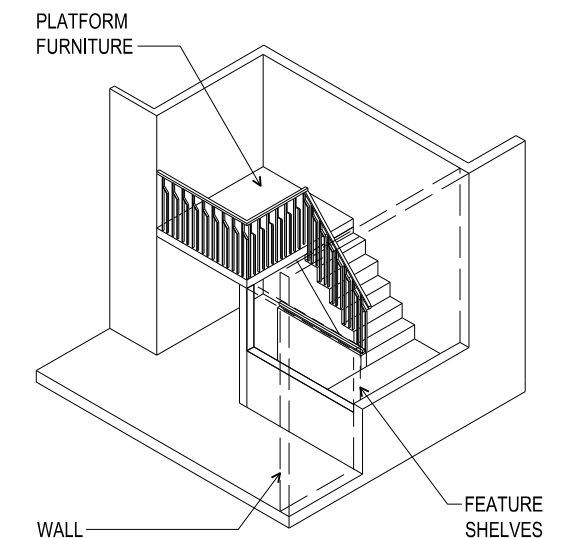
**LEVEL 4  
 LOWER LEVEL**



**ATTIC  
 UPPER LEVEL**



**PLATFORM FURNITURE PLAN**

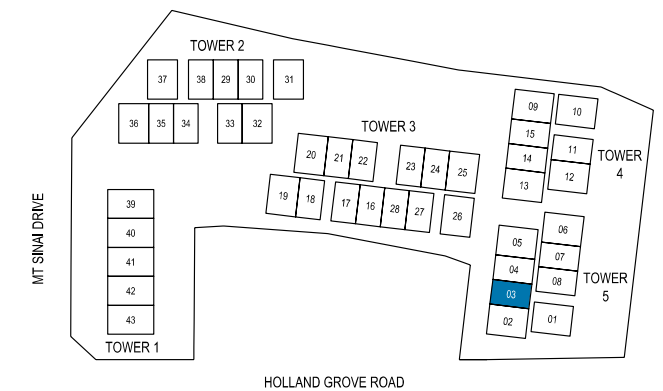


**ISOMETRIC  
 NOT TO SCALE**

- DB DISTRIBUTION BOARD
- F FRIDGE
- SC SHOE CABINET
- WM WASHER CUM DRYER



DISCLAIMER: THE ABOVE PLAN IS SUBJECT TO ANY AMENDMENTS,  
 AS MAY BE APPROVED BY THE RELEVANT AUTHORITIES.



HOLLAND GROVE ROAD

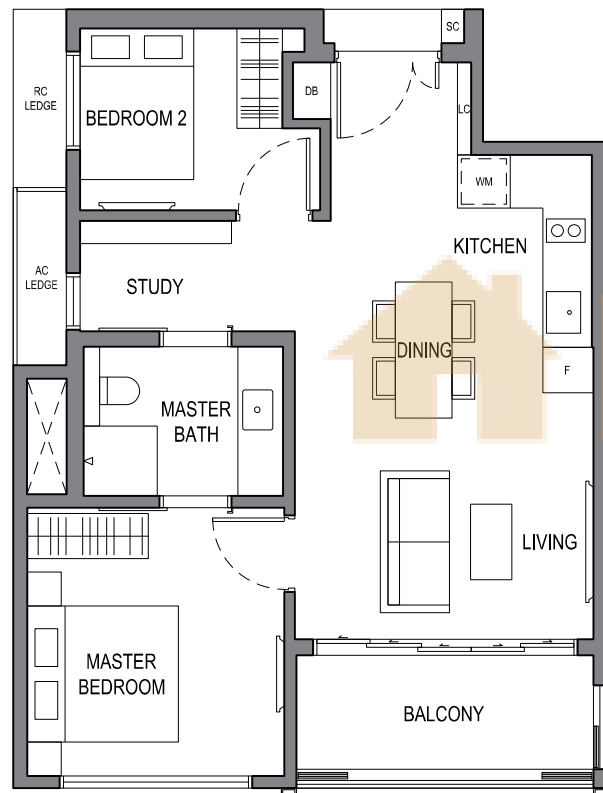
MT SINAI DRIVE



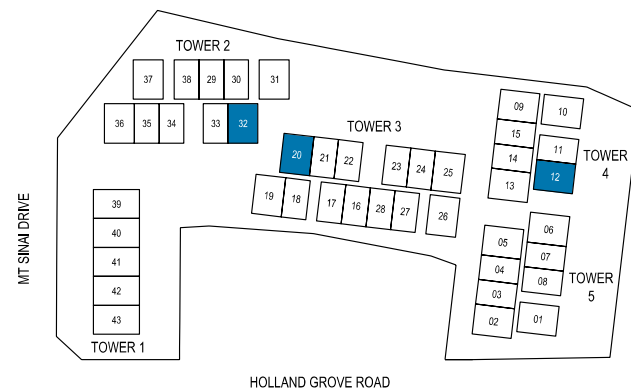
## 2 BEDROOM + STUDY

### TYPE B8

20, 22 & 26 HOLLAND GROVE ROAD  
 #03-12  
 #02-20 (MIRRORED)  
 #03-20 (MIRRORED)  
 #02-32 (MIRRORED)  
 #03-32 (MIRRORED)



BUY CONDO



- DB DISTRIBUTION BOARD
- F FRIDGE
- LC LAUNDRY CABINET
- SC SHOE CABINET
- WM WASHER CUM DRYER



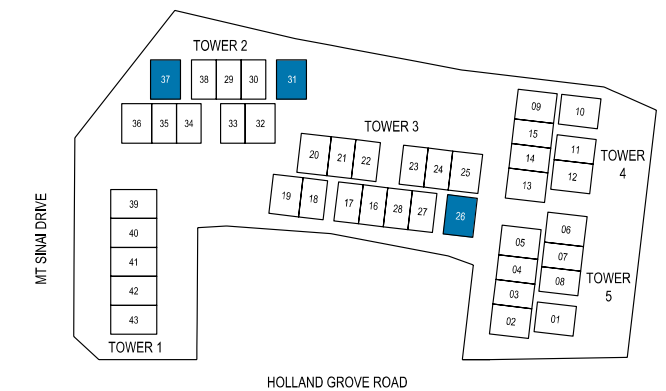
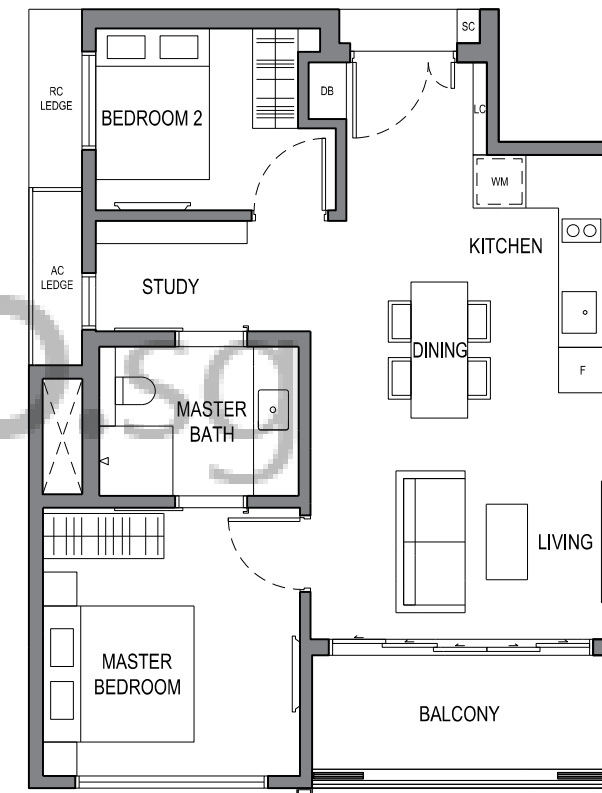
DISCLAIMER: THE ABOVE PLAN IS SUBJECT TO ANY AMENDMENTS, AS MAY BE APPROVED BY THE RELEVANT AUTHORITIES.

KEY PLAN  
 THIS KEY PLAN IS NOT TO SCALE

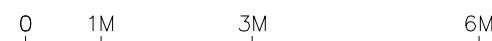
## 2 BEDROOM + STUDY

### TYPE B9

22 & 26 HOLLAND GROVE ROAD  
 #02-26 (MIRRORED)  
 #02-31  
 #02-37 (MIRRORED)  
 #03-37 (MIRRORED)



- DB DISTRIBUTION BOARD
- F FRIDGE
- LC LAUNDRY CABINET
- SC SHOE CABINET
- WM WASHER CUM DRYER



DISCLAIMER: THE ABOVE PLAN IS SUBJECT TO ANY AMENDMENTS, AS MAY BE APPROVED BY THE RELEVANT AUTHORITIES.

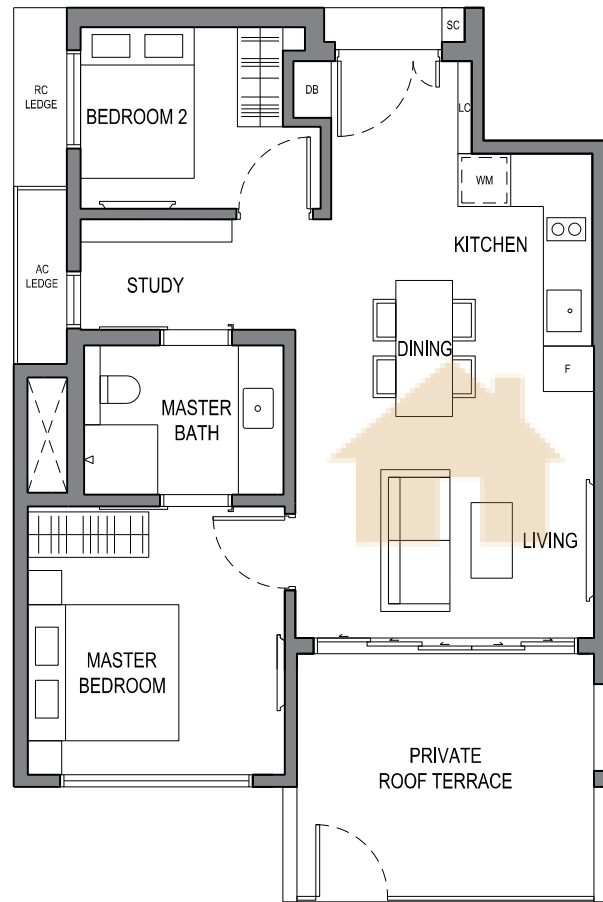
KEY PLAN  
 THIS KEY PLAN IS NOT TO SCALE



## 2 BEDROOM + STUDY

### TYPE B10

20 HOLLAND GROVE ROAD  
#02-12

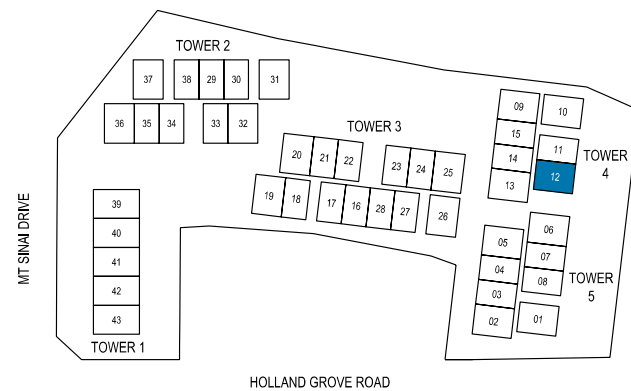


BUYCONDOS.SG

- DB DISTRIBUTION BOARD
- F FRIDGE
- LC LAUNDRY CABINET
- SC SHOE CABINET
- WM WASHER CUM DRYER



DISCLAIMER: THE ABOVE PLAN IS SUBJECT TO ANY AMENDMENTS, AS MAY BE APPROVED BY THE RELEVANT AUTHORITIES.



KEY PLAN  
THIS KEY PLAN IS NOT TO SCALE

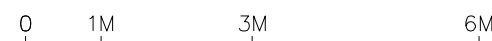
## 2 BEDROOM + STUDY

### TYPE B11

18, 20 & 22 HOLLAND GROVE ROAD  
#02-02 (MIRRORED)  
#03-02 (MIRRORED)  
#02-13 (MIRRORED)  
#03-13 (MIRRORED)  
#02-19  
#03-19



- DB DISTRIBUTION BOARD
- F FRIDGE
- LC LAUNDRY CABINET
- SC SHOE CABINET
- WM WASHER CUM DRYER



DISCLAIMER: THE ABOVE PLAN IS SUBJECT TO ANY AMENDMENTS, AS MAY BE APPROVED BY THE RELEVANT AUTHORITIES.



KEY PLAN  
THIS KEY PLAN IS NOT TO SCALE

## 2 BEDROOM + STUDY

### TYPE B12

22 & 26 HOLLAND GROVE ROAD  
#03-26 (MIRRORED)  
#03-31

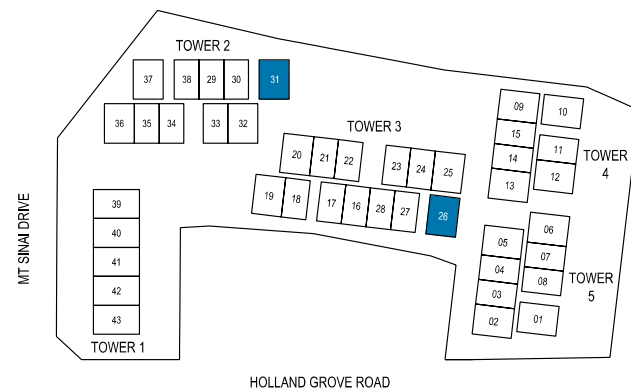


BUYCONDO.SG

- DB DISTRIBUTION BOARD
- F FRIDGE
- LC LAUNDRY CABINET
- SC SHOE CABINET
- WM WASHER CUM DRYER



DISCLAIMER: THE ABOVE PLAN IS SUBJECT TO ANY AMENDMENTS,  
AS MAY BE APPROVED BY THE RELEVANT AUTHORITIES.

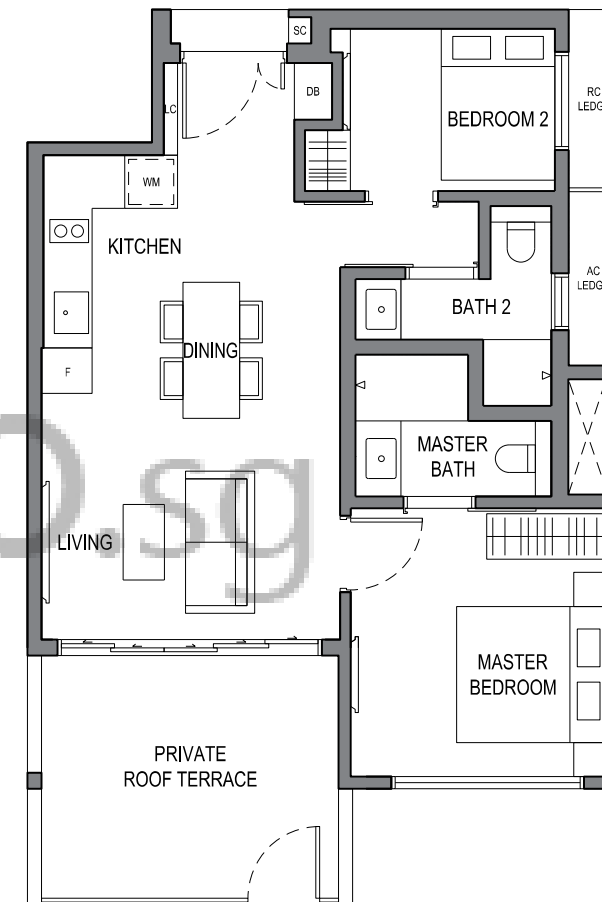


KEY PLAN  
THIS KEY PLAN IS NOT TO SCALE

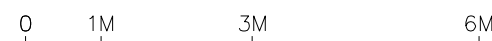
## 2 BEDROOM

### TYPE B13

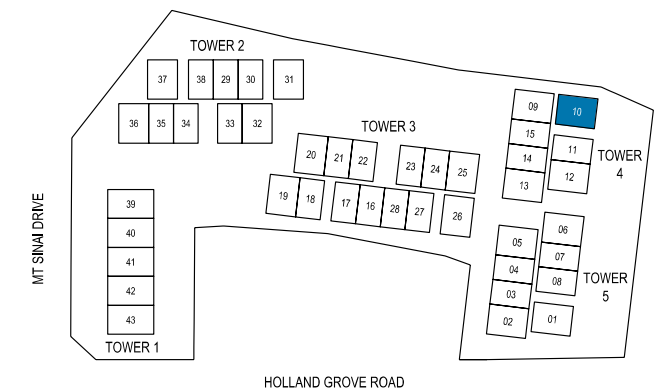
20 HOLLAND GROVE ROAD  
#02-10



- DB DISTRIBUTION BOARD
- F FRIDGE
- LC LAUNDRY CABINET
- SC SHOE CABINET
- WM WASHER CUM DRYER



DISCLAIMER: THE ABOVE PLAN IS SUBJECT TO ANY AMENDMENTS,  
AS MAY BE APPROVED BY THE RELEVANT AUTHORITIES.

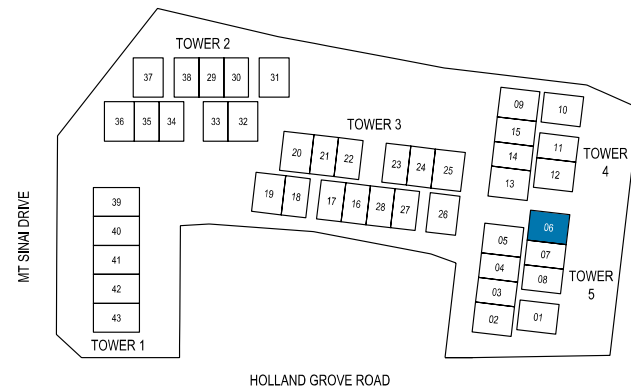
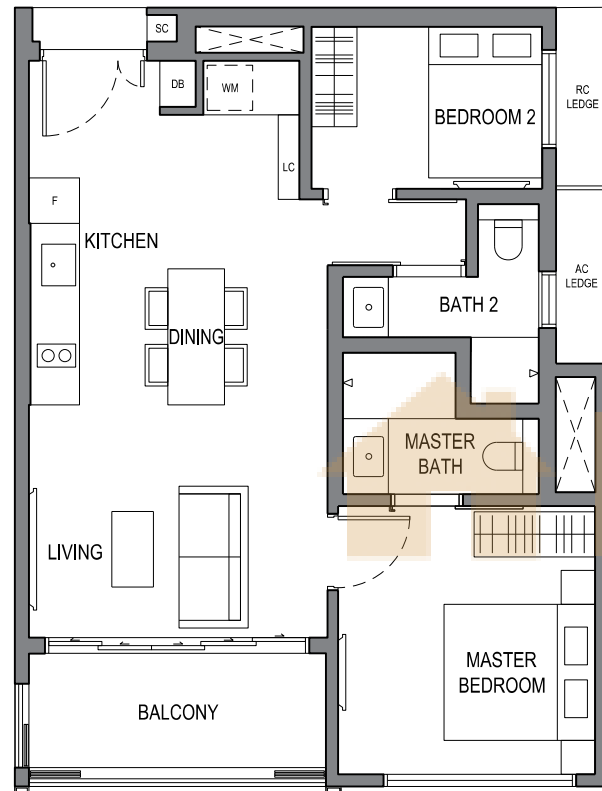


KEY PLAN  
THIS KEY PLAN IS NOT TO SCALE

## 2 BEDROOM

### TYPE B14

18 HOLLAND GROVE ROAD  
#03-06



DB DISTRIBUTION BOARD  
F FRIDGE  
LC LAUNDRY CABINET  
SC SHOE CABINET  
WM WASHER CUM DRYER

0 1M 3M 6M

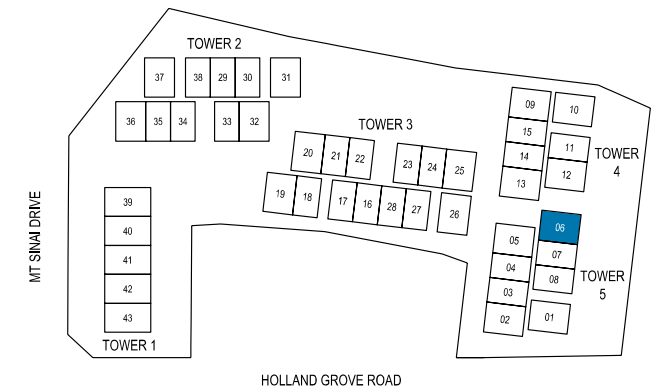
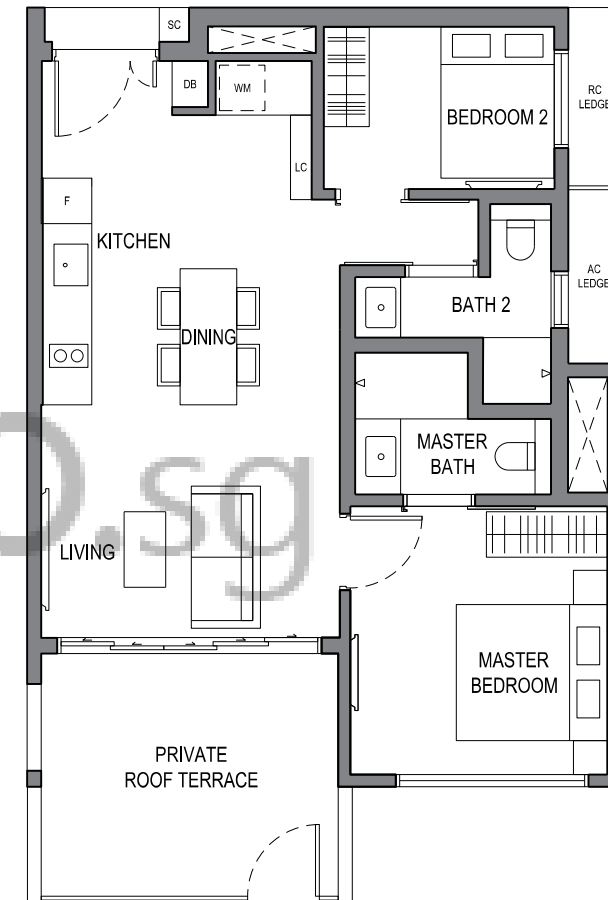
DISCLAIMER: THE ABOVE PLAN IS SUBJECT TO ANY AMENDMENTS,  
AS MAY BE APPROVED BY THE RELEVANT AUTHORITIES.

  
**KEY PLAN**  
THIS KEY PLAN IS NOT TO SCALE

## 2 BEDROOM

### TYPE B15

18 HOLLAND GROVE ROAD  
#02-06



DB DISTRIBUTION BOARD  
F FRIDGE  
LC LAUNDRY CABINET  
SC SHOE CABINET  
WM WASHER CUM DRYER

0 1M 3M 6M

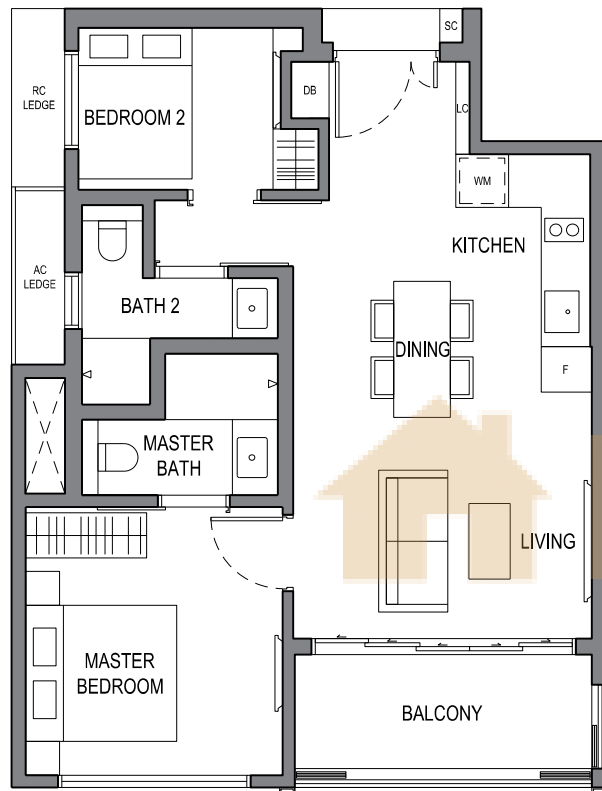
DISCLAIMER: THE ABOVE PLAN IS SUBJECT TO ANY AMENDMENTS,  
AS MAY BE APPROVED BY THE RELEVANT AUTHORITIES.

  
**KEY PLAN**  
THIS KEY PLAN IS NOT TO SCALE

## 2 BEDROOM

### TYPE B16

18, 22 & 26 HOLLAND GROVE ROAD  
 #02-05  
 #03-05  
 #02-25  
 #02-36

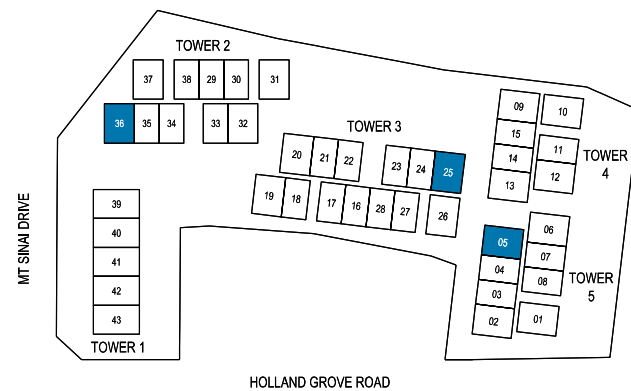


BUYCONDO

- DB DISTRIBUTION BOARD
- F FRIDGE
- LC LAUNDRY CABINET
- SC SHOE CABINET
- WM WASHER CUM DRYER



DISCLAIMER: THE ABOVE PLAN IS SUBJECT TO ANY AMENDMENTS, AS MAY BE APPROVED BY THE RELEVANT AUTHORITIES.



**KEY PLAN**  
 THIS KEY PLAN IS NOT TO SCALE

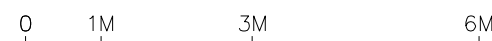
## 2 BEDROOM

### TYPE B17

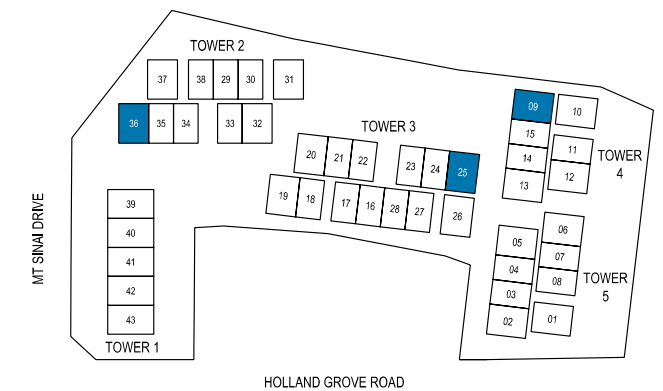
20, 22 & 26 HOLLAND GROVE ROAD  
 #02-09  
 #03-09  
 #03-25  
 #03-36



- DB DISTRIBUTION BOARD
- F FRIDGE
- LC LAUNDRY CABINET
- SC SHOE CABINET
- WM WASHER CUM DRYER



DISCLAIMER: THE ABOVE PLAN IS SUBJECT TO ANY AMENDMENTS, AS MAY BE APPROVED BY THE RELEVANT AUTHORITIES.



**KEY PLAN**  
 THIS KEY PLAN IS NOT TO SCALE

# 2 BEDROOM

## TYPE B18

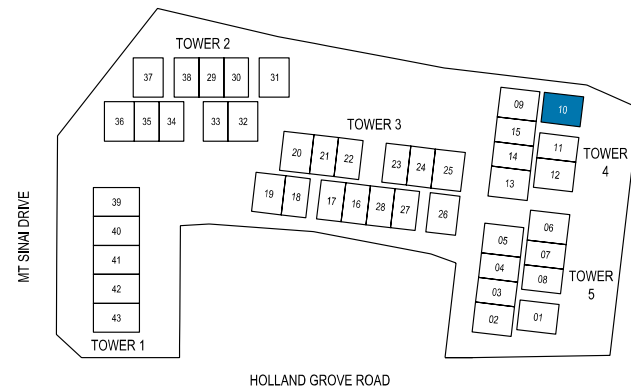
20 HOLLAND GROVE ROAD  
#03-10



- DB DISTRIBUTION BOARD
- F FRIDGE
- LC LAUNDRY CABINET
- SC SHOE CABINET
- WM WASHER CUM DRYER



DISCLAIMER: THE ABOVE PLAN IS SUBJECT TO ANY AMENDMENTS, AS MAY BE APPROVED BY THE RELEVANT AUTHORITIES.



Artist's impression. Design of Henry Park is subject to authorities' approval.



# 3 BEDROOM DUAL-KEY

## TYPE C1 (dk)

18, 20, 22 & 26 HOLLAND GROVE ROAD

#04-02 (MIRRORED)

#04-05

#04-09

#04-10 (MIRRORED)

#04-12

#04-13 (MIRRORED)

#04-19

#04-20 (MIRRORED)

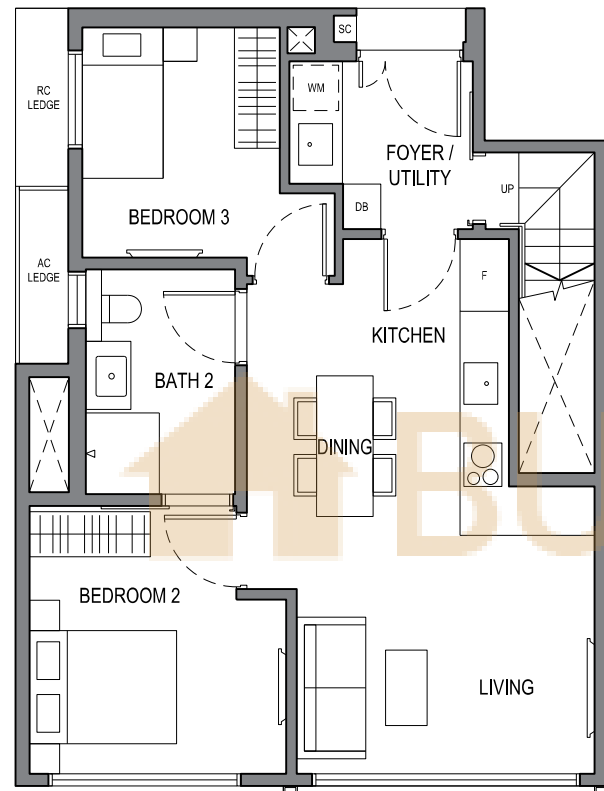
#04-25

#04-26 (MIRRORED)

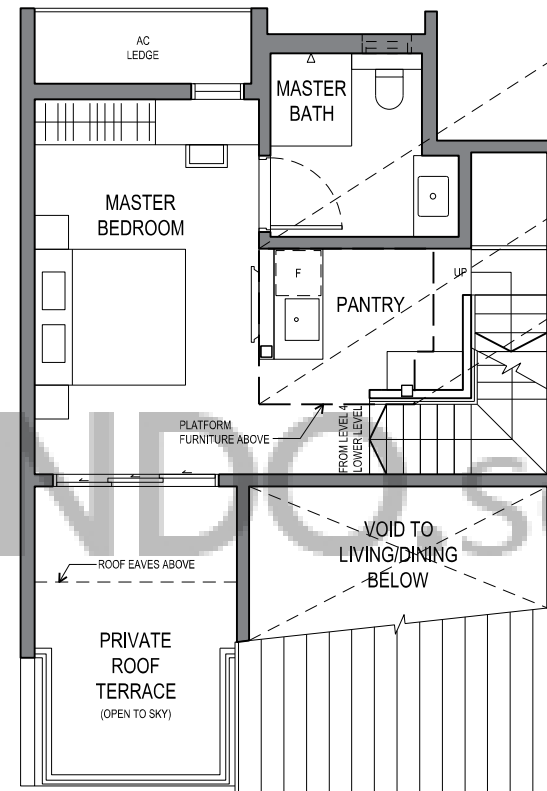
#04-31

#04-32 (MIRRORED)

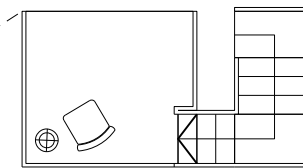
#04-37 (MIRRORED)



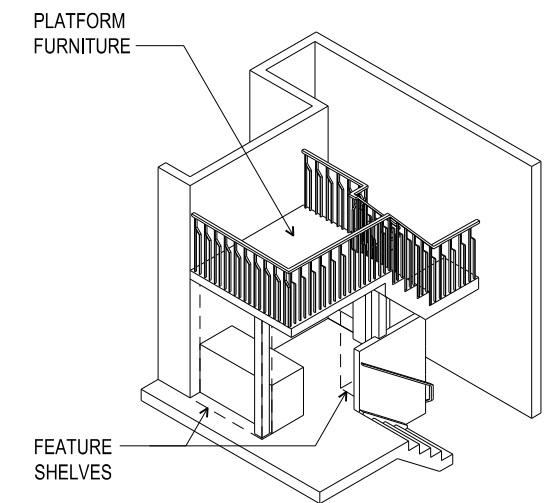
LEVEL 4  
LOWER LEVEL



ATTIC  
UPPER LEVEL



PLATFORM FURNITURE PLAN

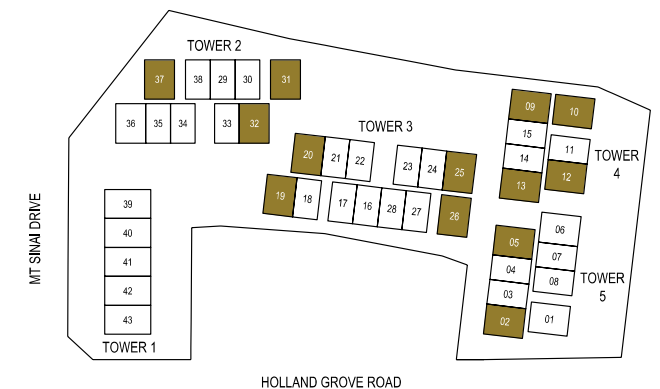


ISOMETRIC  
NOT TO SCALE

- DB DISTRIBUTION BOARD
- F FRIDGE
- SC SHOE CABINET
- WM WASHER CUM DRYER



DISCLAIMER: THE ABOVE PLAN IS SUBJECT TO ANY AMENDMENTS,  
AS MAY BE APPROVED BY THE RELEVANT AUTHORITIES.



HOLLAND GROVE ROAD

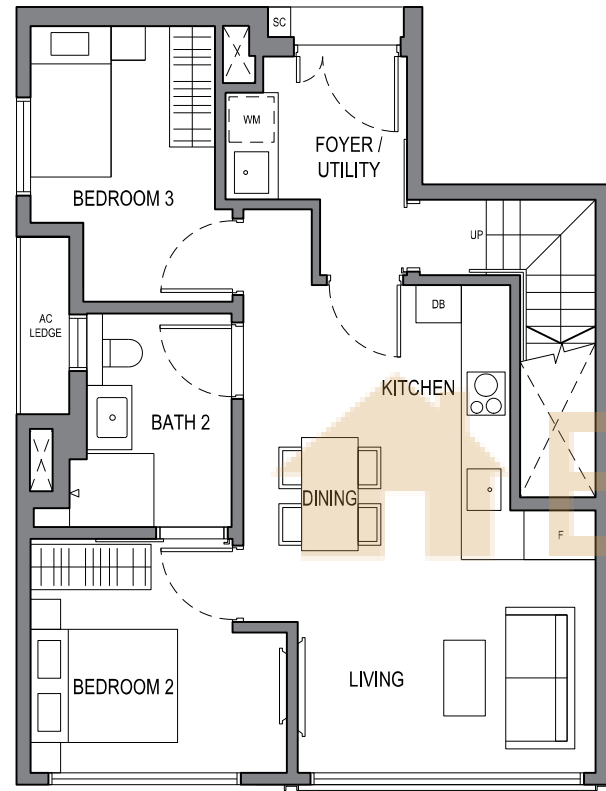
MT SINAI DRIVE



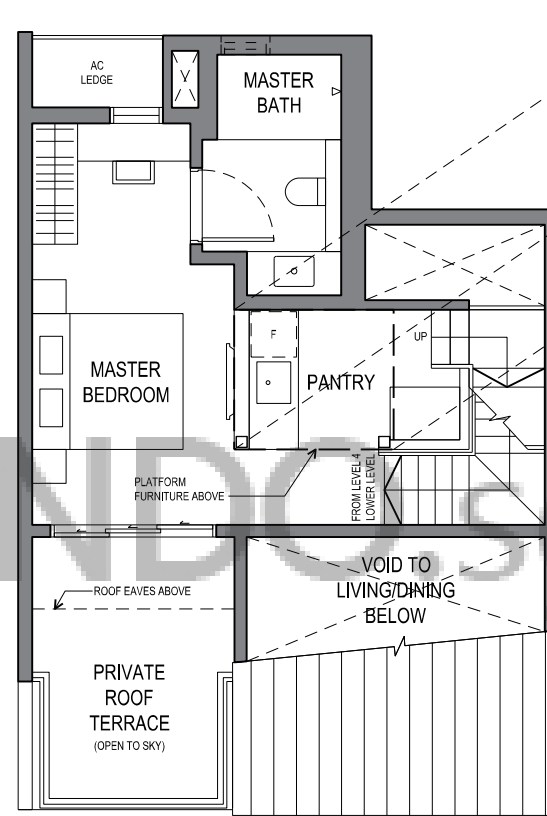
KEY PLAN  
THIS KEY PLAN IS NOT TO SCALE

# 3 BEDROOM DUAL-KEY

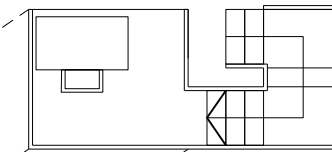
**TYPE C2(dk)**  
 18 HOLLAND GROVE ROAD  
 #04-01



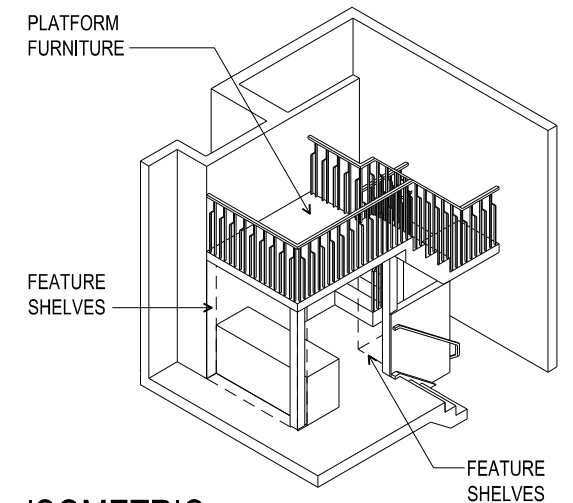
**LEVEL 4  
 LOWER LEVEL**



**ATTIC  
 UPPER LEVEL**



**PLATFORM FURNITURE PLAN**

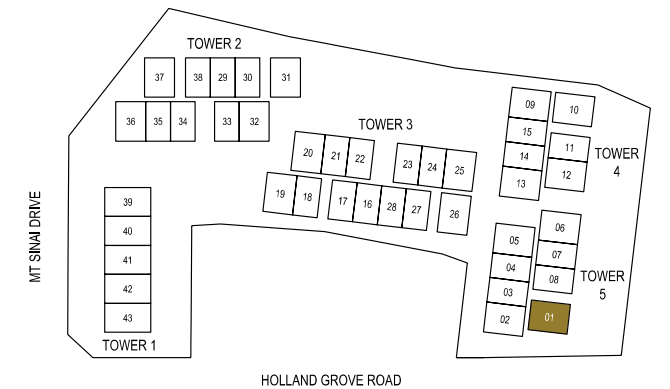


**ISOMETRIC  
 NOT TO SCALE**

- DB DISTRIBUTION BOARD
- F FRIDGE
- SC SHOE CABINET
- WM WASHER CUM DRYER



DISCLAIMER: THE ABOVE PLAN IS SUBJECT TO ANY AMENDMENTS,  
 AS MAY BE APPROVED BY THE RELEVANT AUTHORITIES.



HOLLAND GROVE ROAD

MT SINAI DRIVE

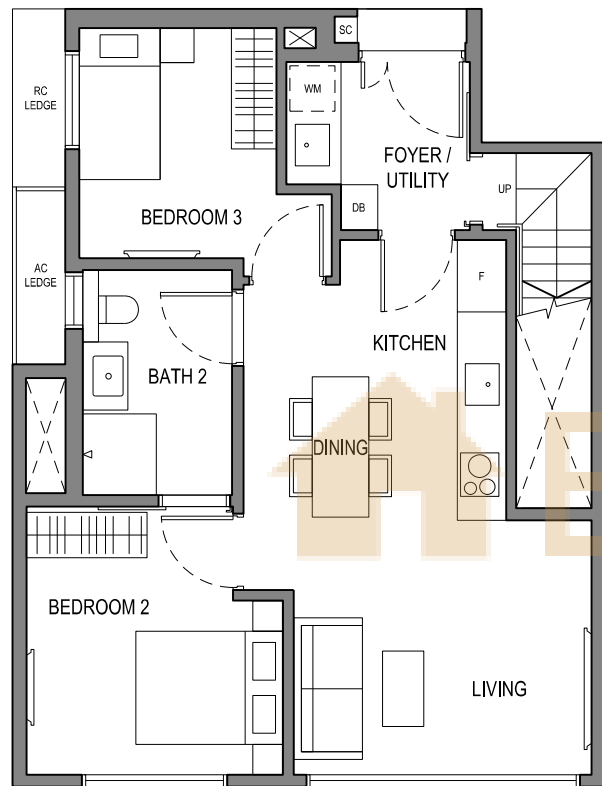


**KEY PLAN**  
 THIS KEY PLAN IS NOT TO SCALE

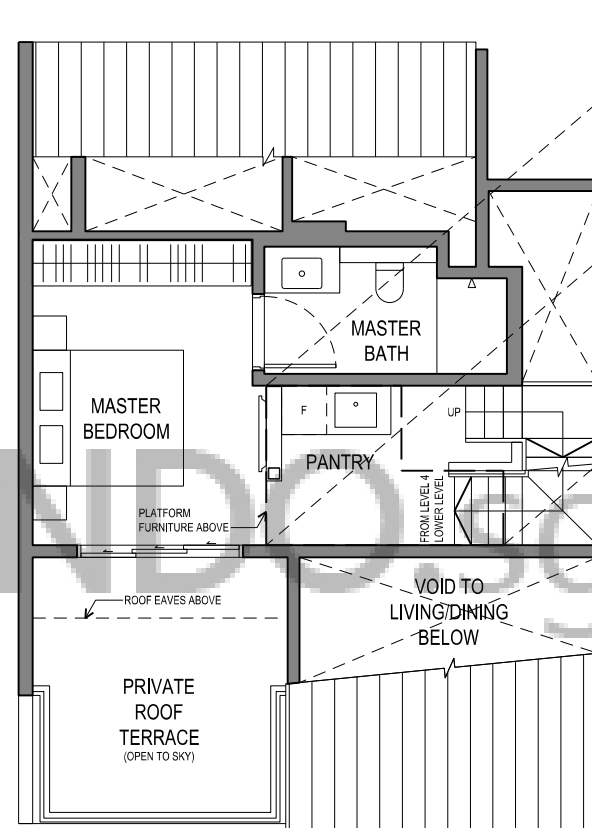
# 3 BEDROOM DUAL-KEY

TYPE C3(dk)

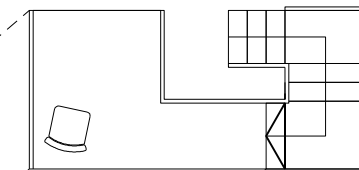
26 HOLLAND GROVE ROAD  
#04-36



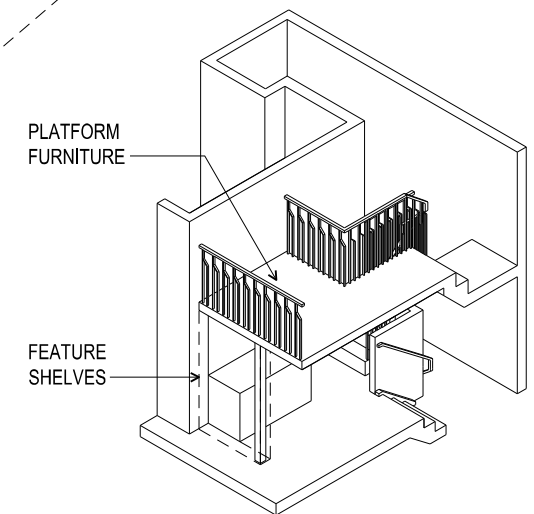
LEVEL 4  
LOWER LEVEL



ATTIC  
UPPER LEVEL



PLATFORM FURNITURE PLAN

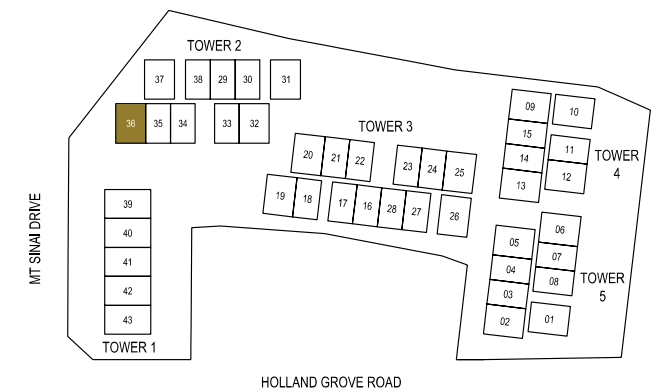


ISOMETRIC  
NOT TO SCALE

- DB DISTRIBUTION BOARD
- F FRIDGE
- SC SHOE CABINET
- WM WASHER CUM DRYER



DISCLAIMER: THE ABOVE PLAN IS SUBJECT TO ANY AMENDMENTS,  
AS MAY BE APPROVED BY THE RELEVANT AUTHORITIES.



HOLLAND GROVE ROAD

MT SINAI DRIVE



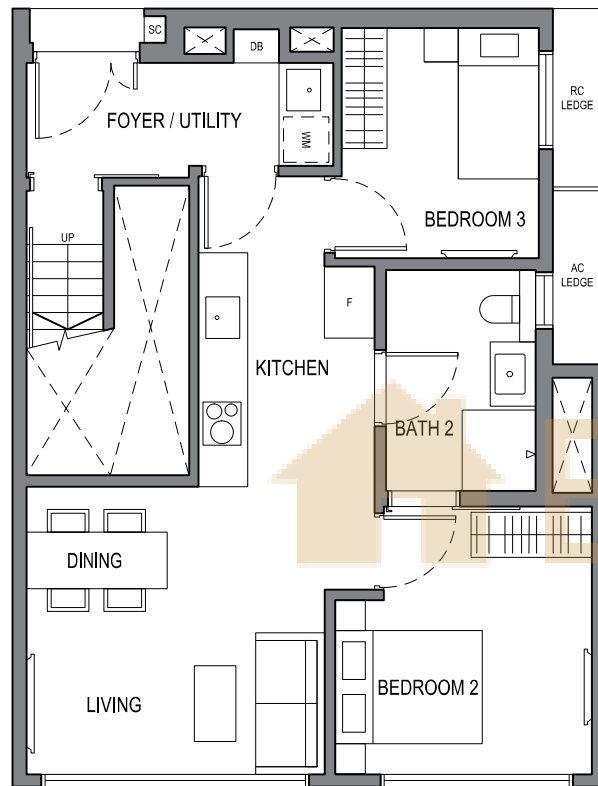
KEY PLAN  
THIS KEY PLAN IS NOT TO SCALE



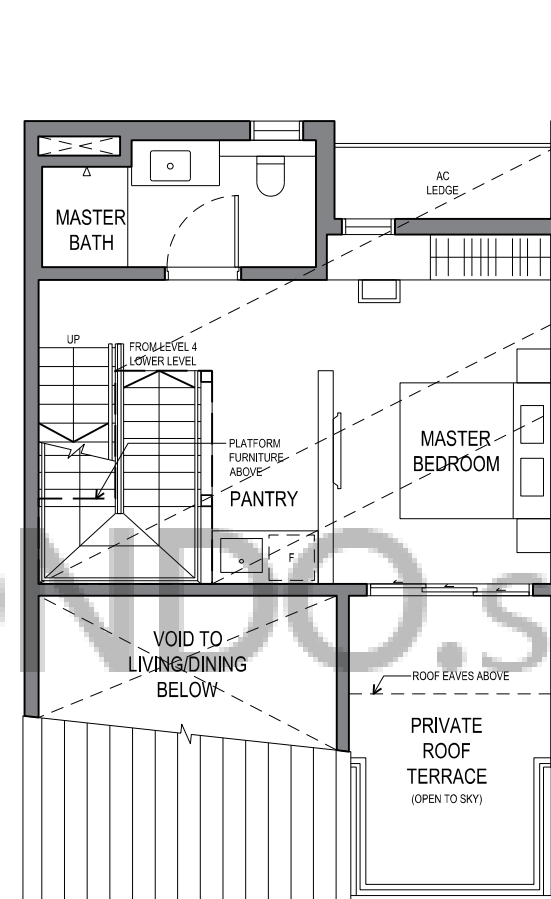
# 3 BEDROOM DUAL-KEY

TYPE C4(dk)

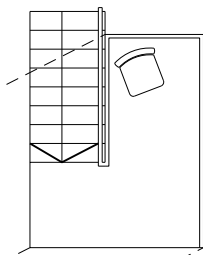
18 HOLLAND GROVE ROAD  
#04-06



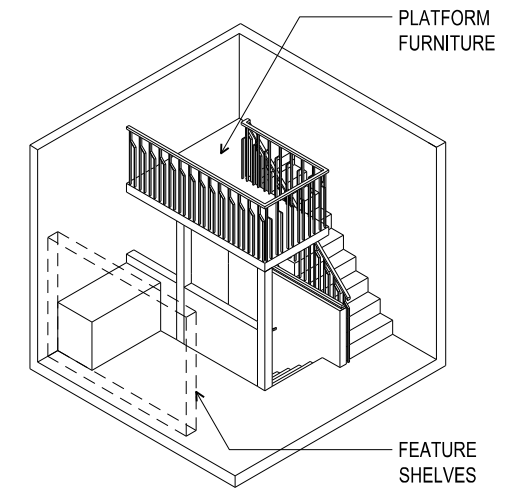
LEVEL 4  
LOWER LEVEL



ATTIC  
UPPER LEVEL



PLATFORM FURNITURE PLAN

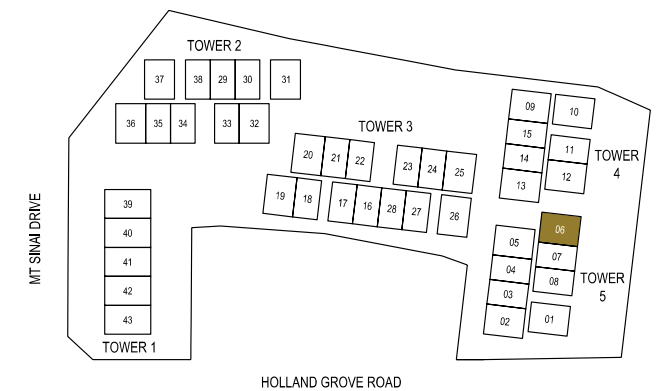


ISOMETRIC  
NOT TO SCALE

- DB DISTRIBUTION BOARD
- F FRIDGE
- SC SHOE CABINET
- WM WASHER CUM DRYER



DISCLAIMER: THE ABOVE PLAN IS SUBJECT TO ANY AMENDMENTS,  
AS MAY BE APPROVED BY THE RELEVANT AUTHORITIES.



HOLLAND GROVE ROAD

MT SINAI DRIVE



KEY PLAN  
THIS KEY PLAN IS NOT TO SCALE