

2-BEDROOM + STORE

3-BEDROOM + STORE

TYPE A

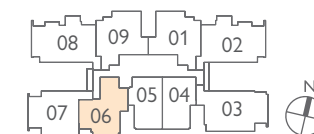
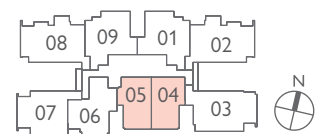
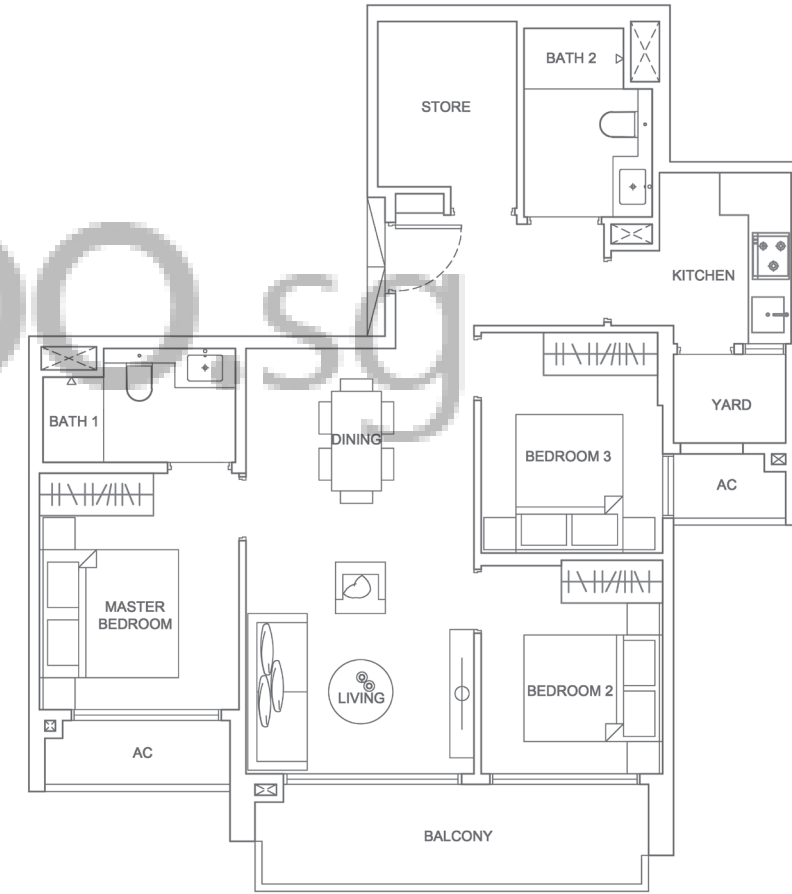
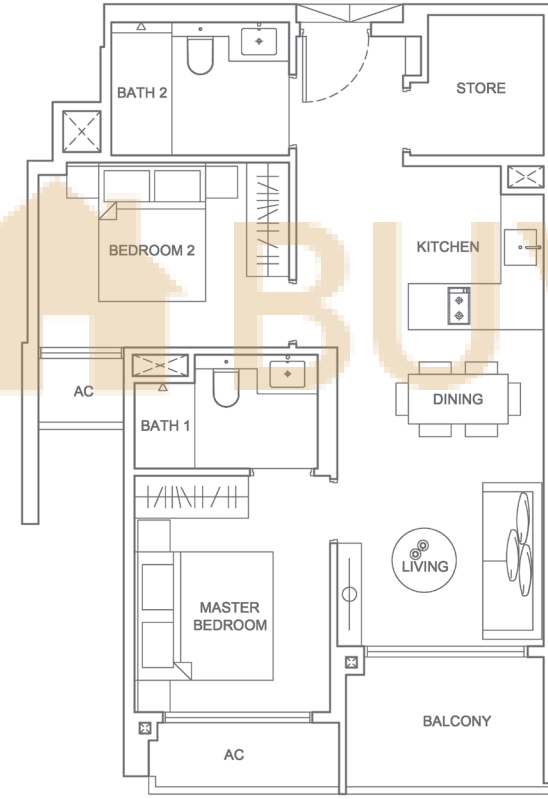
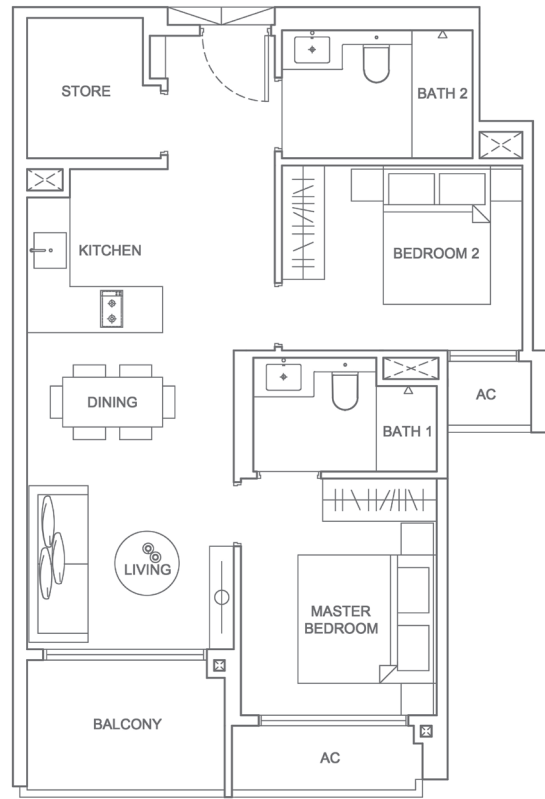
AREA 70 SQM / 753 SQFT
UNIT #02-04 to #05-04

TYPE B

AREA 70 SQM / 753 SQFT
UNIT #02-05 to #05-05

TYPE C

AREA 90 SQM / 969 SQFT
UNIT #02-06 to #04-06



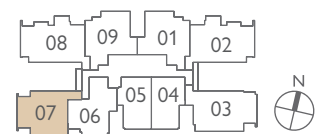
Unit area includes A/C ledge and void where applicable. All plans are subject to amendments as approved by the relevant authorities. The balcony shall not be enclosed unless with the approved balcony screen. For an illustration of the approved balcony screen, please refer to the diagram "Typical Balcony Screen Detail" of this brochure.

Unit area includes A/C ledge and void where applicable. All plans are subject to amendments as approved by the relevant authorities. The balcony shall not be enclosed unless with the approved balcony screen. For an illustration of the approved balcony screen, please refer to the diagram "Typical Balcony Screen Detail" of this brochure.

3-BEDROOM (PREMIUM) + STORE

TYPE D

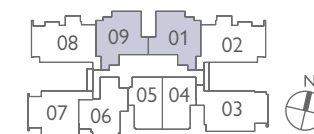
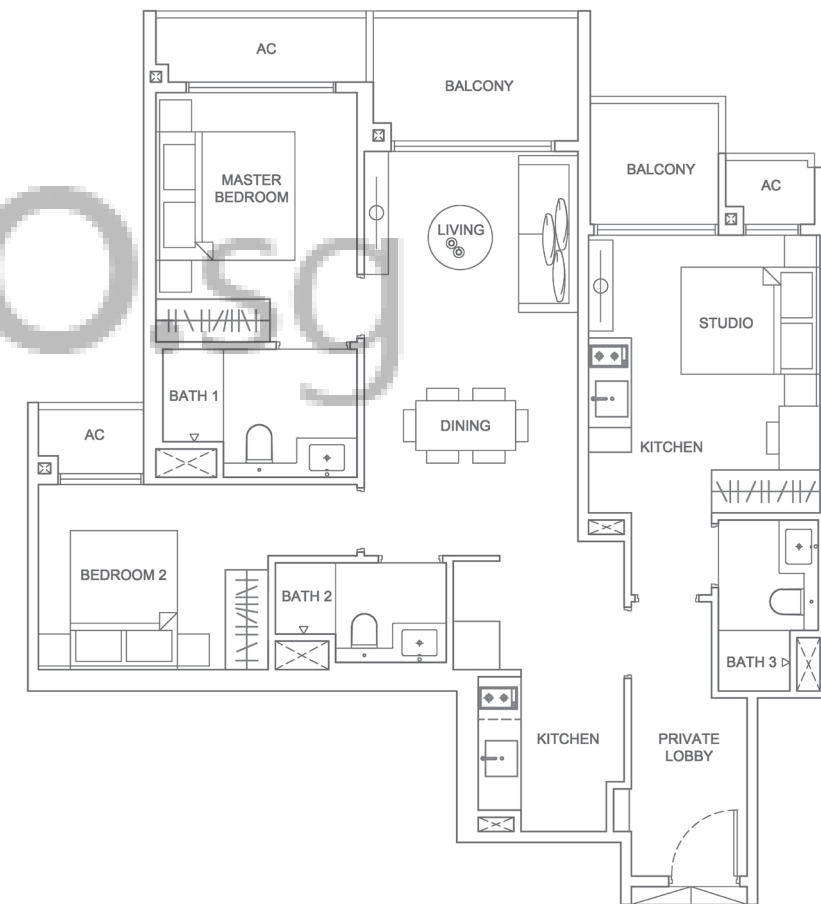
AREA 97 SQM / 1,044 SQFT
 UNIT #02-07 to #04-07



3-BEDROOM DUAL-KEY

TYPE E

AREA 99 SQM / 1,066 SQFT
 UNIT #02-01 to #05-01
 #02-09* to #05-09*
 *Mirror Image



Unit area includes A/C ledge and void where applicable. All plans are subject to amendments as approved by the relevant authorities. The balcony shall not be enclosed unless with the approved balcony screen. For an illustration of the approved balcony screen, please refer to the diagram "Typical Balcony Screen Detail" of this brochure.

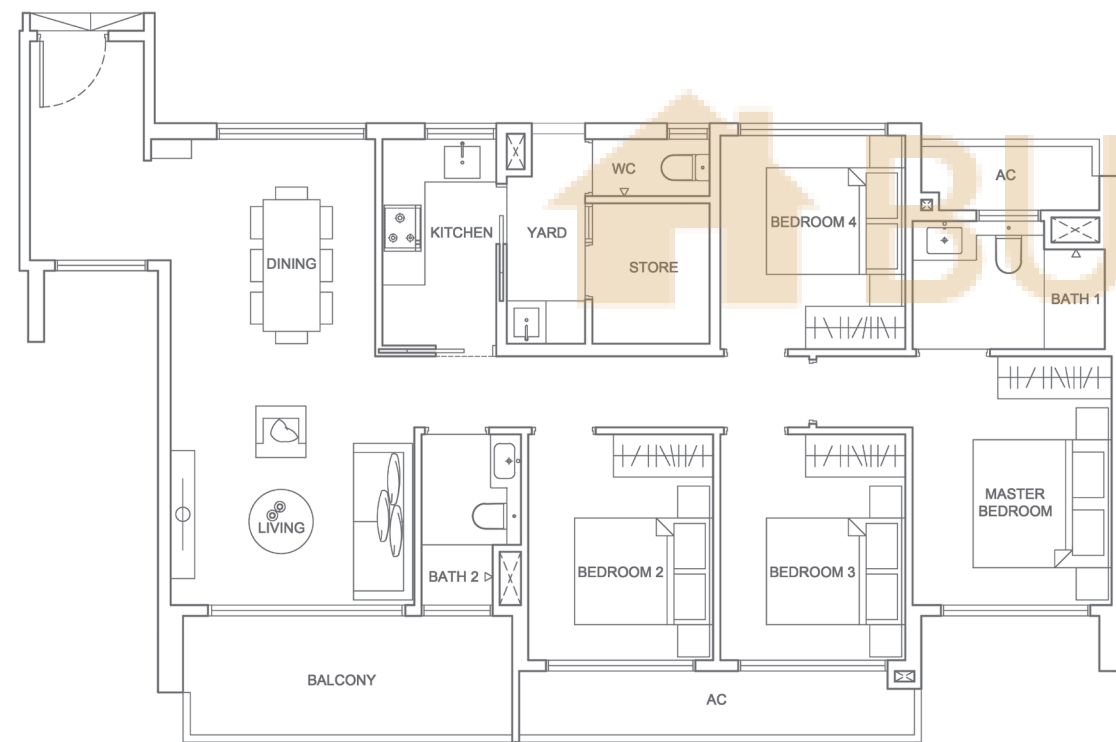
Unit area includes A/C ledge and void where applicable. All plans are subject to amendments as approved by the relevant authorities. The balcony shall not be enclosed unless with the approved balcony screen. For an illustration of the approved balcony screen, please refer to the diagram "Typical Balcony Screen Detail" of this brochure.

4-BEDROOM + STORE

4-BEDROOM DUAL-KEY + STORE

TYPE F

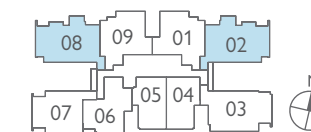
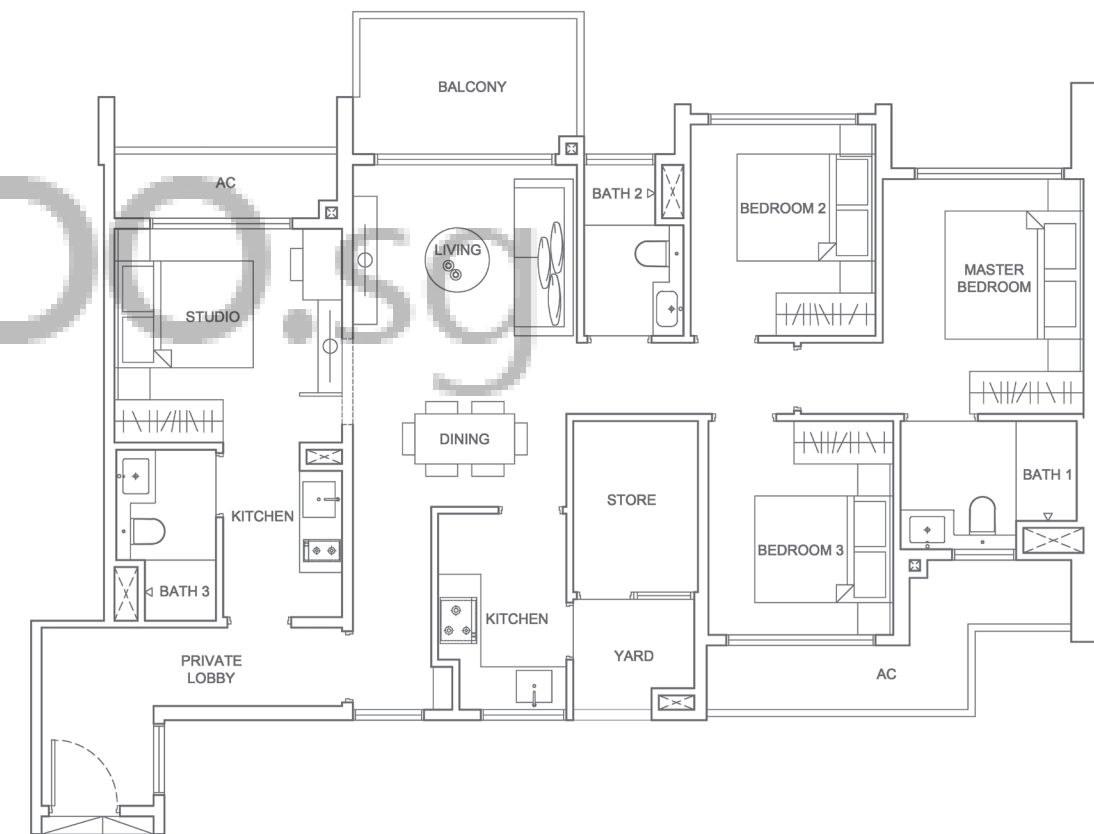
AREA 114 SQM / 1,227 SQFT
 UNIT #02-03 to #04-03



Unit area includes A/C ledge and void where applicable. All plans are subject to amendments as approved by the relevant authorities. The balcony shall not be enclosed unless with the approved balcony screen. For an illustration of the approved balcony screen, please refer to the diagram "Typical Balcony Screen Detail" of this brochure.

TYPE G

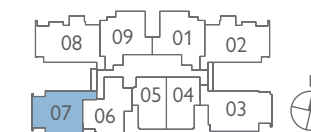
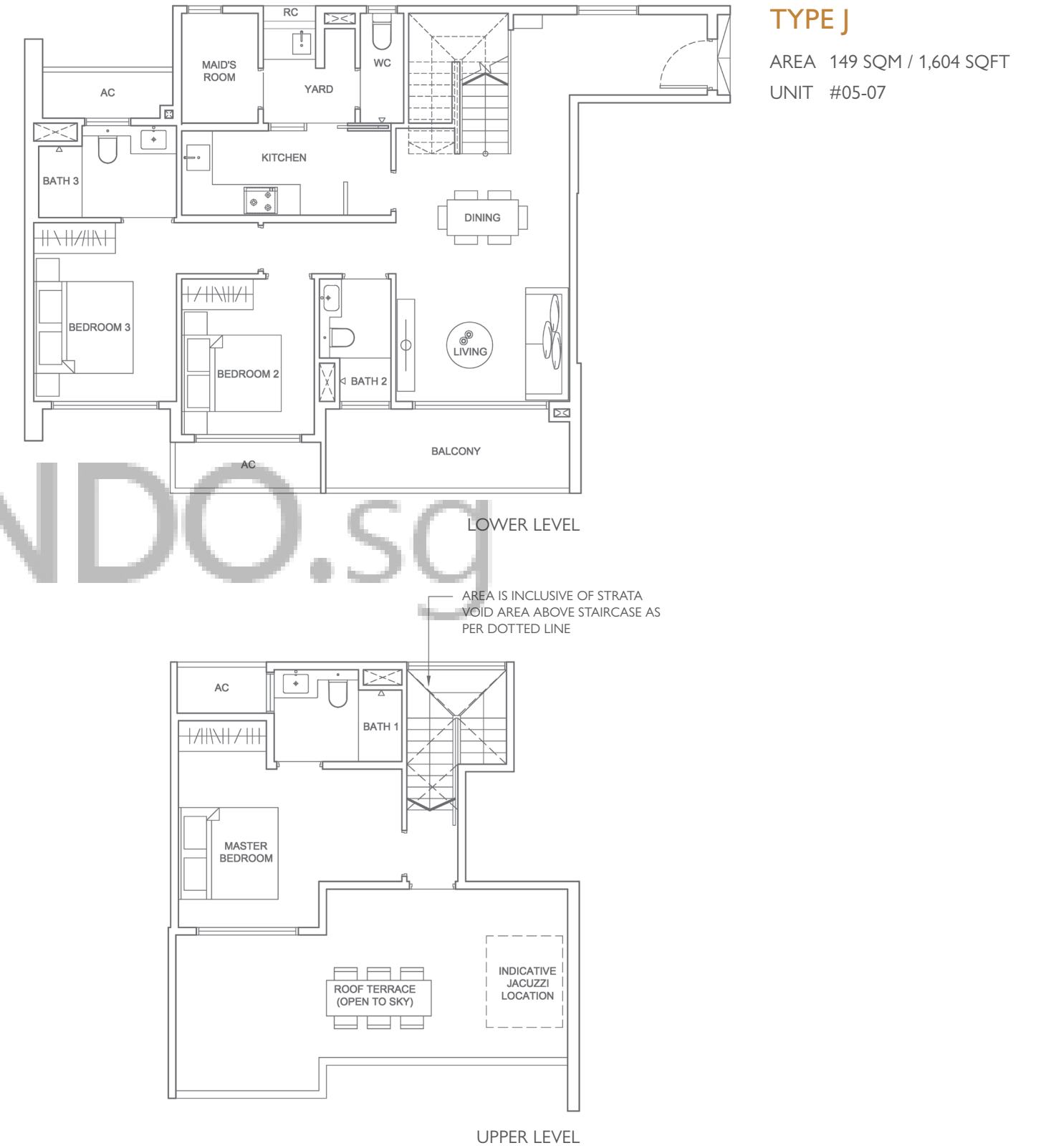
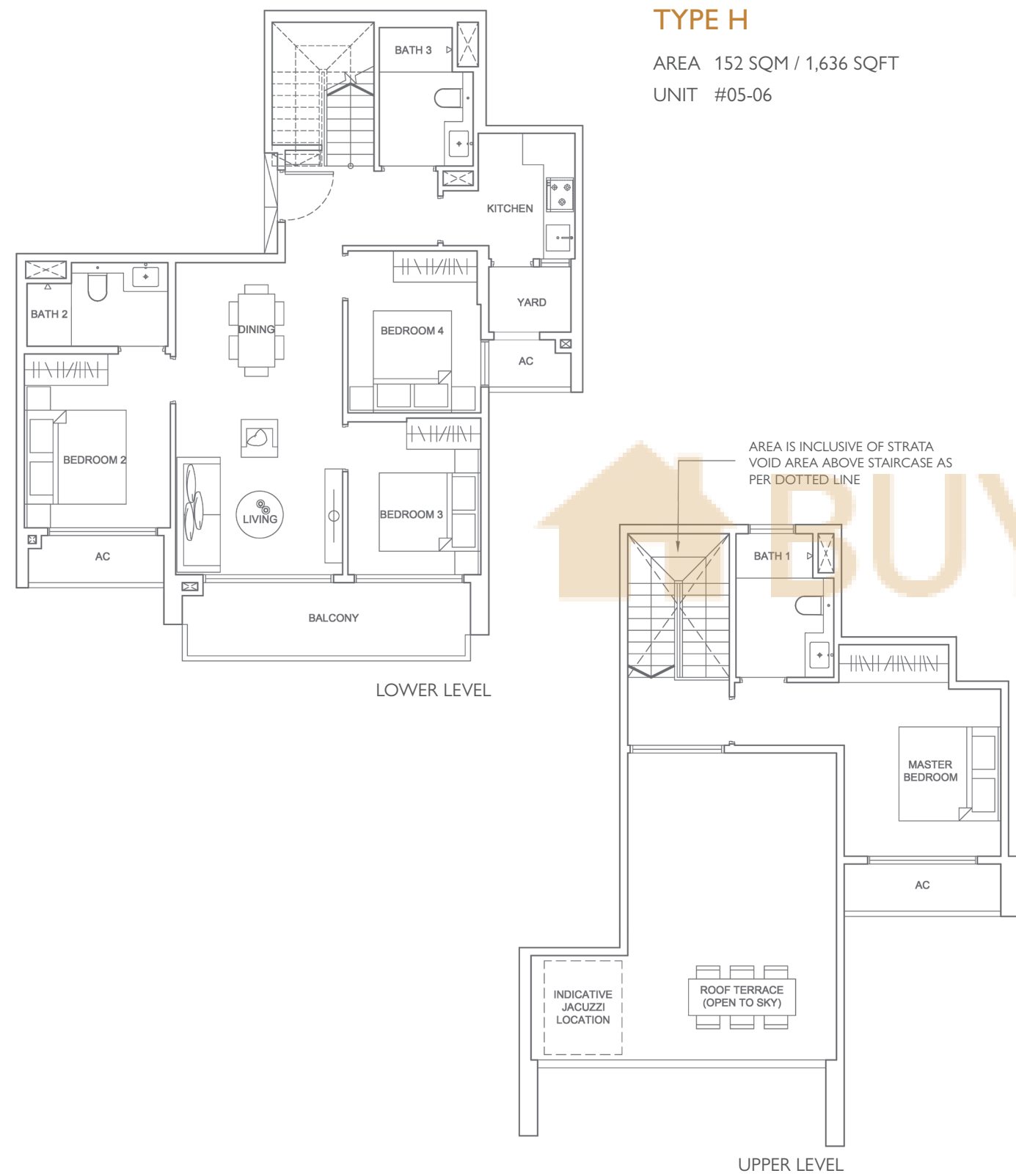
AREA 116 SQM / 1,249 SQFT
 UNIT #02-02 to #05-02
 #02-08* to #05-08*
 *Mirror Image



Unit area includes A/C ledge and void where applicable. All plans are subject to amendments as approved by the relevant authorities. The balcony shall not be enclosed unless with the approved balcony screen. For an illustration of the approved balcony screen, please refer to the diagram "Typical Balcony Screen Detail" of this brochure.

4-BEDROOM PENTHOUSE

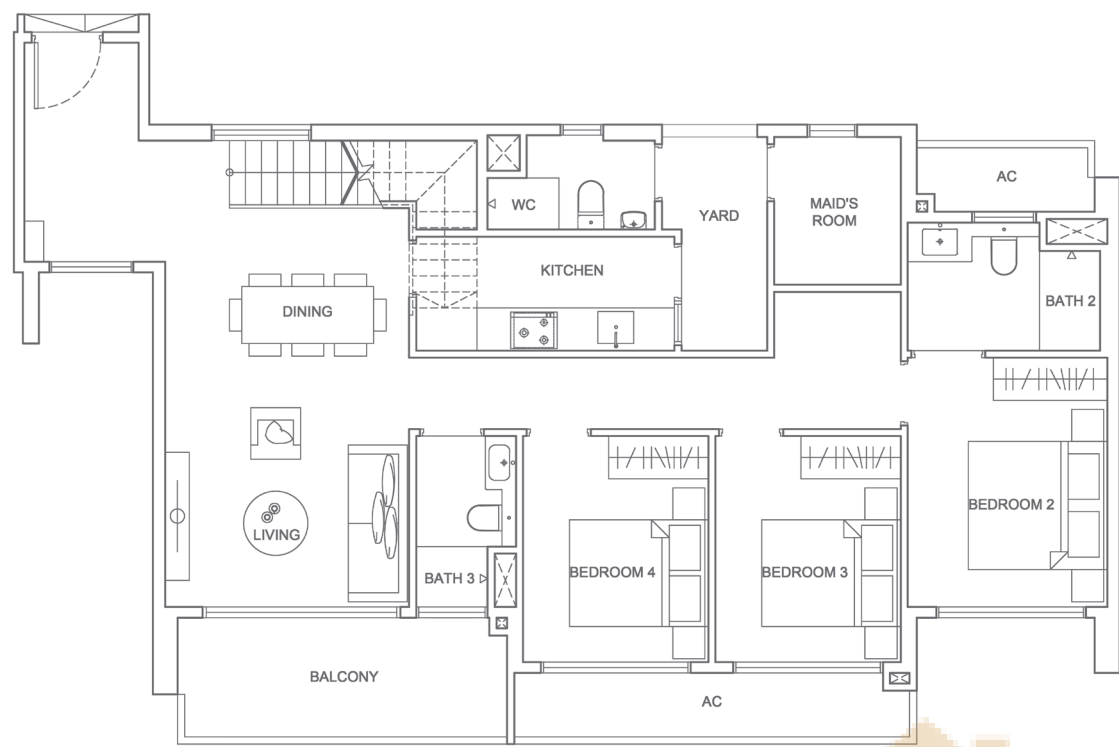
3-BEDROOM PENTHOUSE + MAID'S ROOM



Unit area includes A/C ledge and void where applicable. All plans are subject to amendments as approved by the relevant authorities. The balcony shall not be enclosed unless with the approved balcony screen. For an illustration of the approved balcony screen, please refer to the diagram "Typical Balcony Screen Detail" of this brochure.

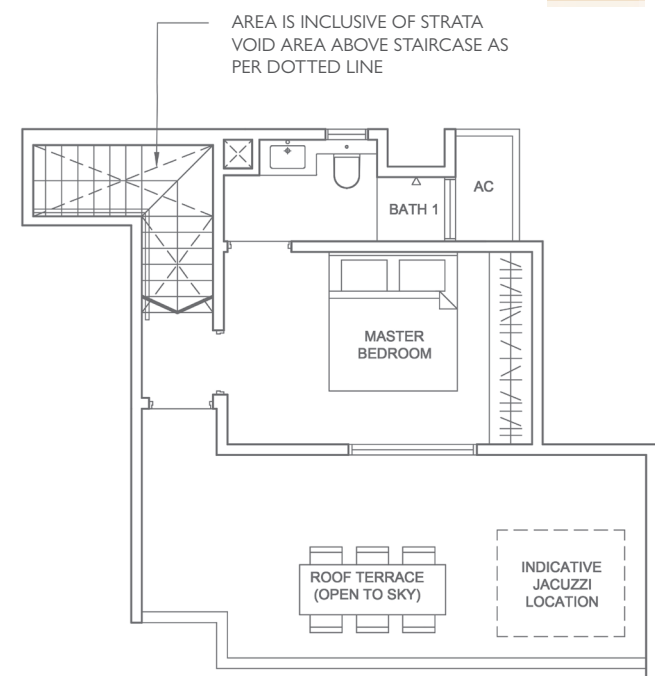
Unit area includes A/C ledge and void where applicable. All plans are subject to amendments as approved by the relevant authorities. The balcony shall not be enclosed unless with the approved balcony screen. For an illustration of the approved balcony screen, please refer to the diagram "Typical Balcony Screen Detail" of this brochure.

4-BEDROOM PENTHOUSE + MAID'S ROOM

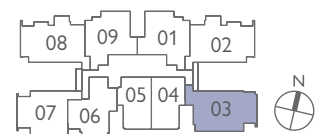


TYPE K
 AREA 160 SQM / 1,722 SQFT
 UNIT #05-03

LOWER LEVEL



UPPER LEVEL



Unit area includes A/C ledge and void where applicable. All plans are subject to amendments as approved by the relevant authorities. The balcony shall not be enclosed unless with the approved balcony screen. For an illustration of the approved balcony screen, please refer to the diagram "Typical Balcony Screen Detail" of this brochure.



Developer: GDL Land Pte Ltd • Developer's Licence No.: C1310 • Project Name: Infini At East Coast • Tenure of Land: Freehold • Mukim/Lot No.: Lot 06043X MK 26 at 363 East Coast Road
 • Building Plan No.: A1211-18006-2018-BP01 • Approved Date: 13 June 2019 • Encumbrances on the Land: Mortgage registered in favour of Oversea – Chinese Banking Corporation Limited
 • Expected Date of Vacant Possession: 30 June 2022 • Expected date of Legal Completion: 30 June 2025

DISCLAIMER: While reasonable care has been taken in the preparation of this brochure, the Developer cannot be held responsible for any inaccuracies or omissions. The statements, information and depictions shall not be regarded or relied upon as statements or representations of facts, and are subject to such changes as may be required by the Developer or the relevant authorities, and cannot form part of an offer or contract. Visual representations, digital images, models, showflat, illustrations, photographs, drawings, displays and art renderings are artist's impressions only (which serve only to give an approximate idea of the project), and cannot be regarded as representation of facts. All plans and layouts are not to scale and are subject to change/amendments as may be directed or approved by the relevant authorities or required by the architect. The floor areas indicated in the brochure are approximate measurements only and are subject to final survey. The information included in this brochure is accurate as at the time of printing and there may be changes subsequently as may be required by the architects and relevant authorities. For the avoidance of any doubt, the information herein shall not form part of the Option of Sales and Purchase Agreement governing the terms and conditions of the sale and purchase of the unit.