

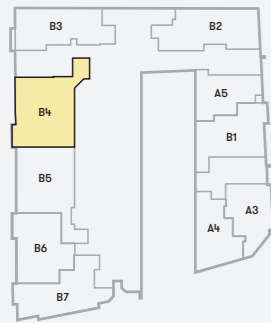
44 **The  
West  
Block**



# Type B4 2 Bedroom

## The West Block

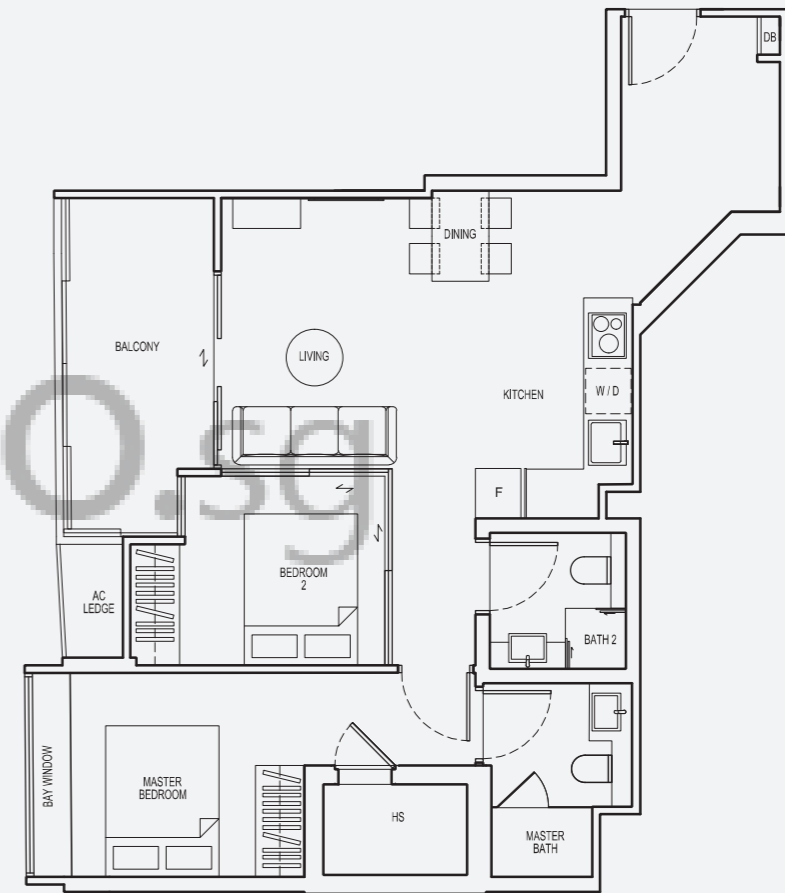
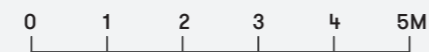
Key Plan: 2nd to 5th Storey



**Area**  
79 sqm  
(850 sqft)

333 Guillemard Road  
Singapore 399758

#02-04 to #05-04

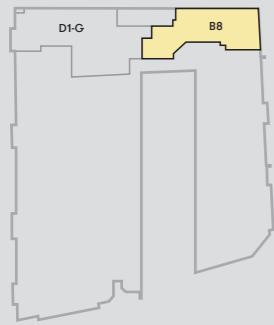


**Note:**  
All floor areas indicated are inclusive of AC Ledge, Balcony and Private Enclosed Space (PES), where applicable. All floor areas are estimated only and subject to final survey. All floor plans are subject to changes as may be required or approved by the relevant authorities.

# Type B8 2 Bedroom

## The North Block

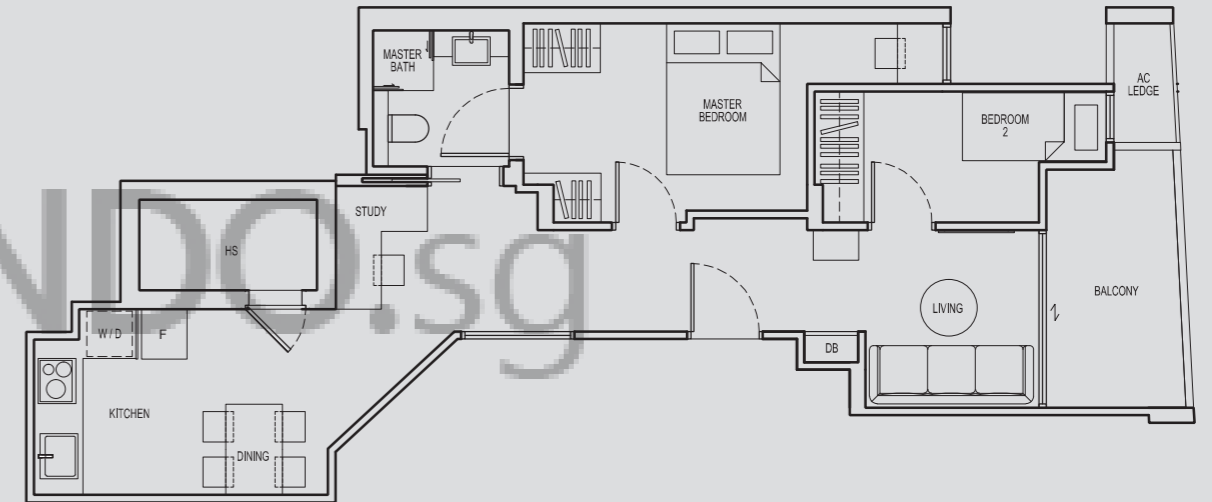
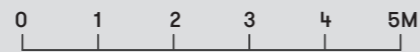
Key Plan: 6th Storey



**Area**  
65 sqm  
(700 sqft)

333 Guillemard Road  
Singapore 399758

#06-06

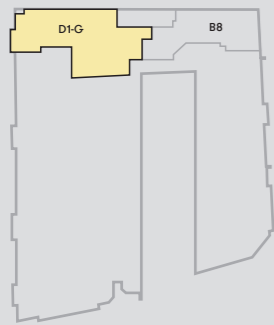


**Note:**  
All floor areas indicated are inclusive of AC Ledge, Balcony and Private Enclosed Space (PES), where applicable. All floor areas are estimated only and subject to final survey. All floor plans are subject to changes as may be required or approved by the relevant authorities.

# Type D1-G 4 Bedroom

## The North Block

Key Plan: 6th Storey

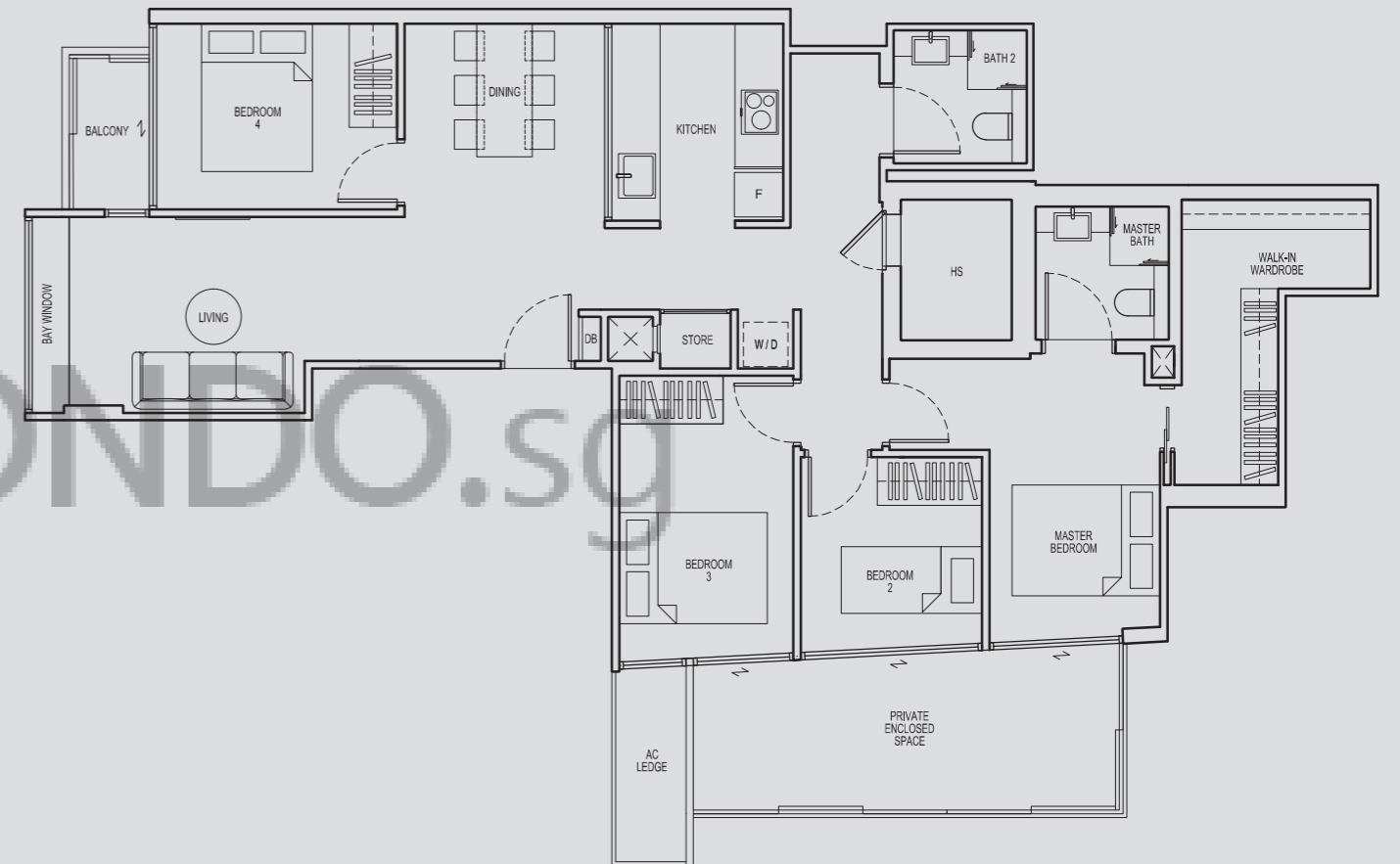
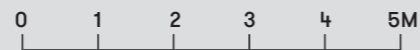


### Area

122 sqm  
(1313 sqft)

333 Guillemard Road  
Singapore 399758

#06-05

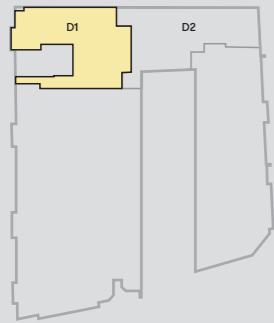


**Note:**  
All floor areas indicated are inclusive of AC Ledge, Balcony and Private Enclosed Space (PES), where applicable. All floor areas are estimated only and subject to final survey. All floor plans are subject to changes as may be required or approved by the relevant authorities.

# Type D1 4 Bedroom

## The North Block

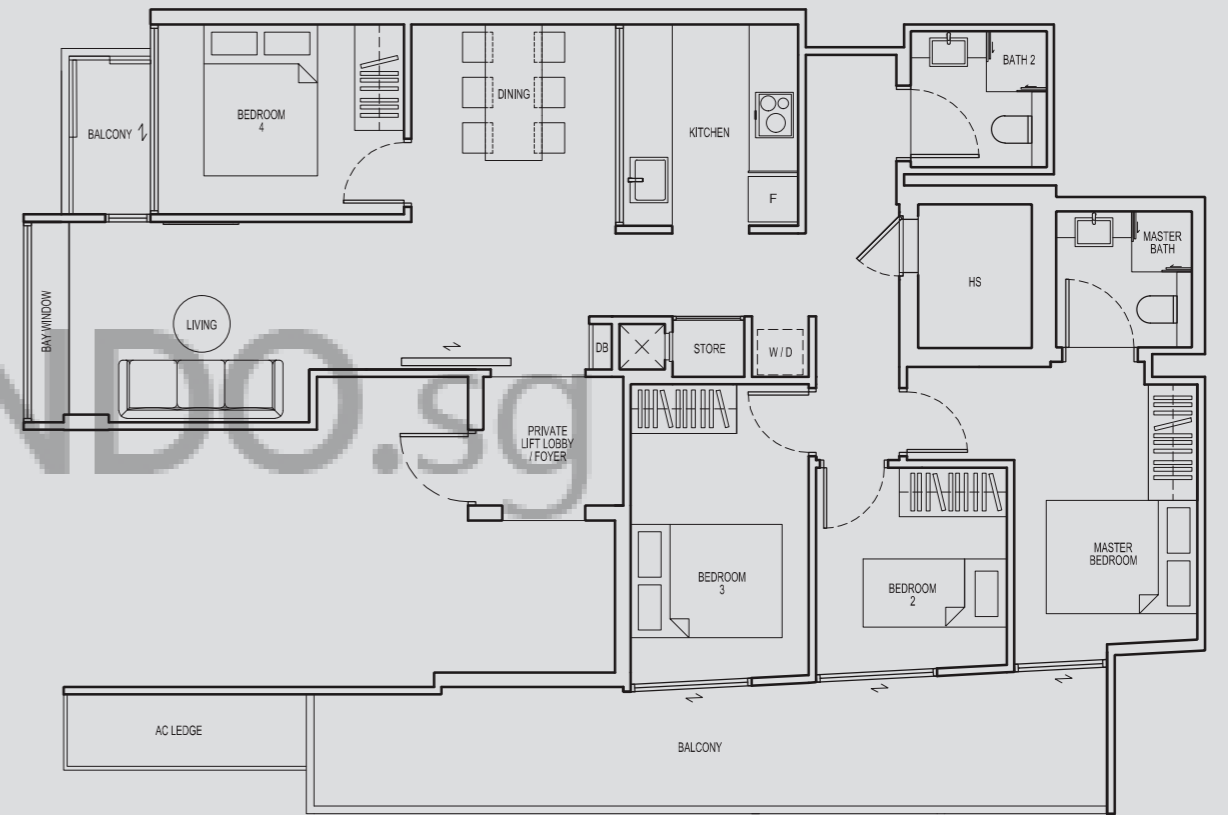
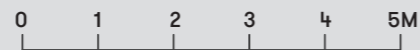
Key Plan: 7th & 8th Storey



**Area**  
124 sqm  
(1335 sqft)

333 Guillemard Road  
Singapore 399758

#07-05  
#08-05

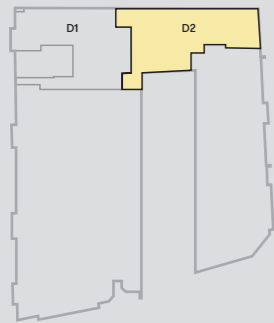


**Note:**  
All floor areas indicated are inclusive of AC Ledge, Balcony and Private Enclosed Space (PES), where applicable. All floor areas are estimated only and subject to final survey. All floor plans are subject to changes as may be required or approved by the relevant authorities.

# Type D2A 4 Bedroom

## The North Block

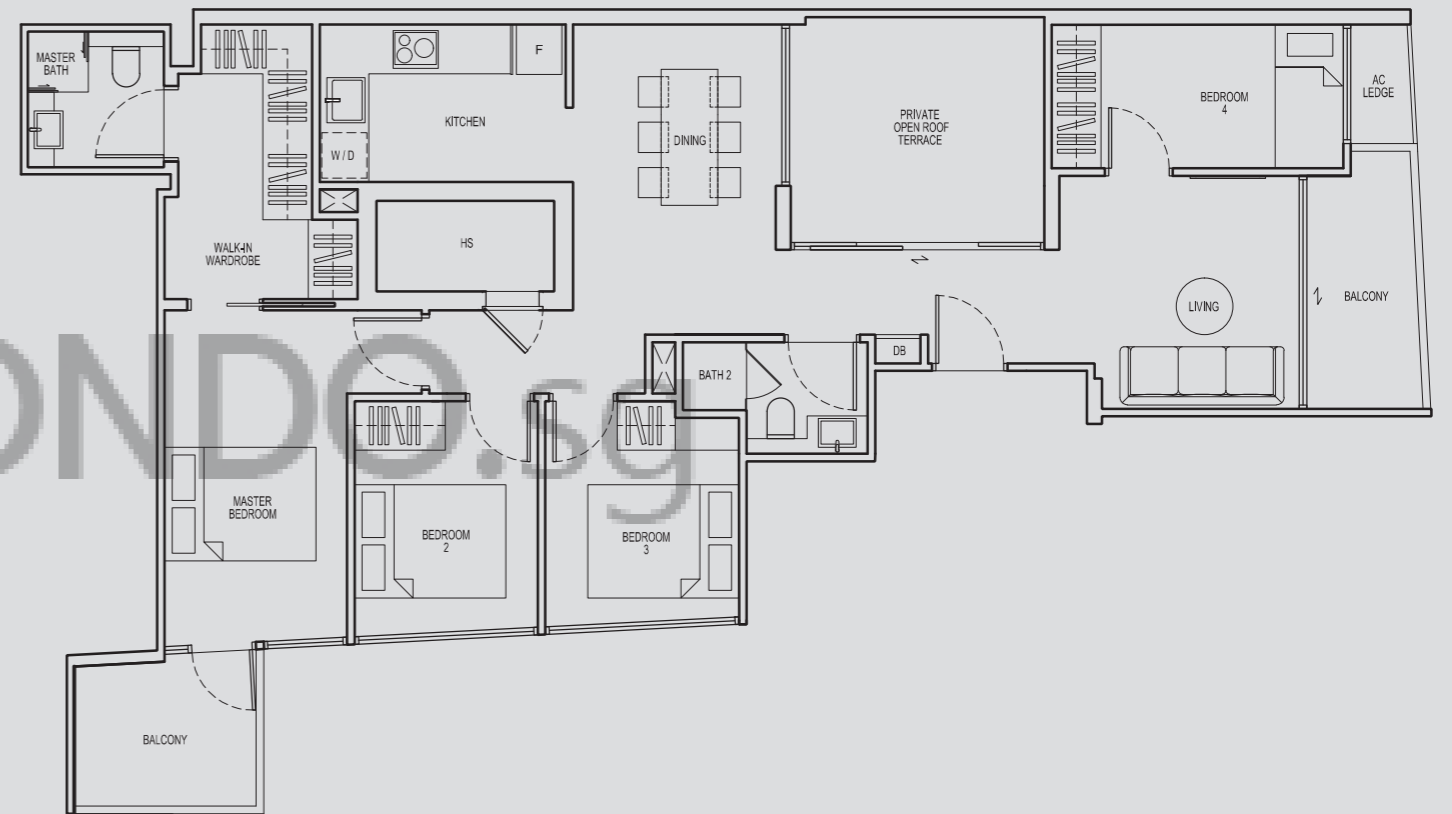
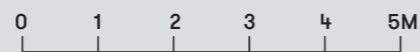
Key Plan: 7th Storey



**Area**  
119 sqm  
(1281 sqft)

333 Guillemard Road  
Singapore 399758

#07-06

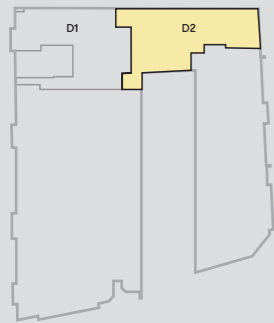


**Note:**  
All floor areas indicated are inclusive of AC Ledge, Balcony and Private Enclosed Space (PES), where applicable. All floor areas are estimated only and subject to final survey. All floor plans are subject to changes as may be required or approved by the relevant authorities.

# Type D2 4 Bedroom

## The North Block

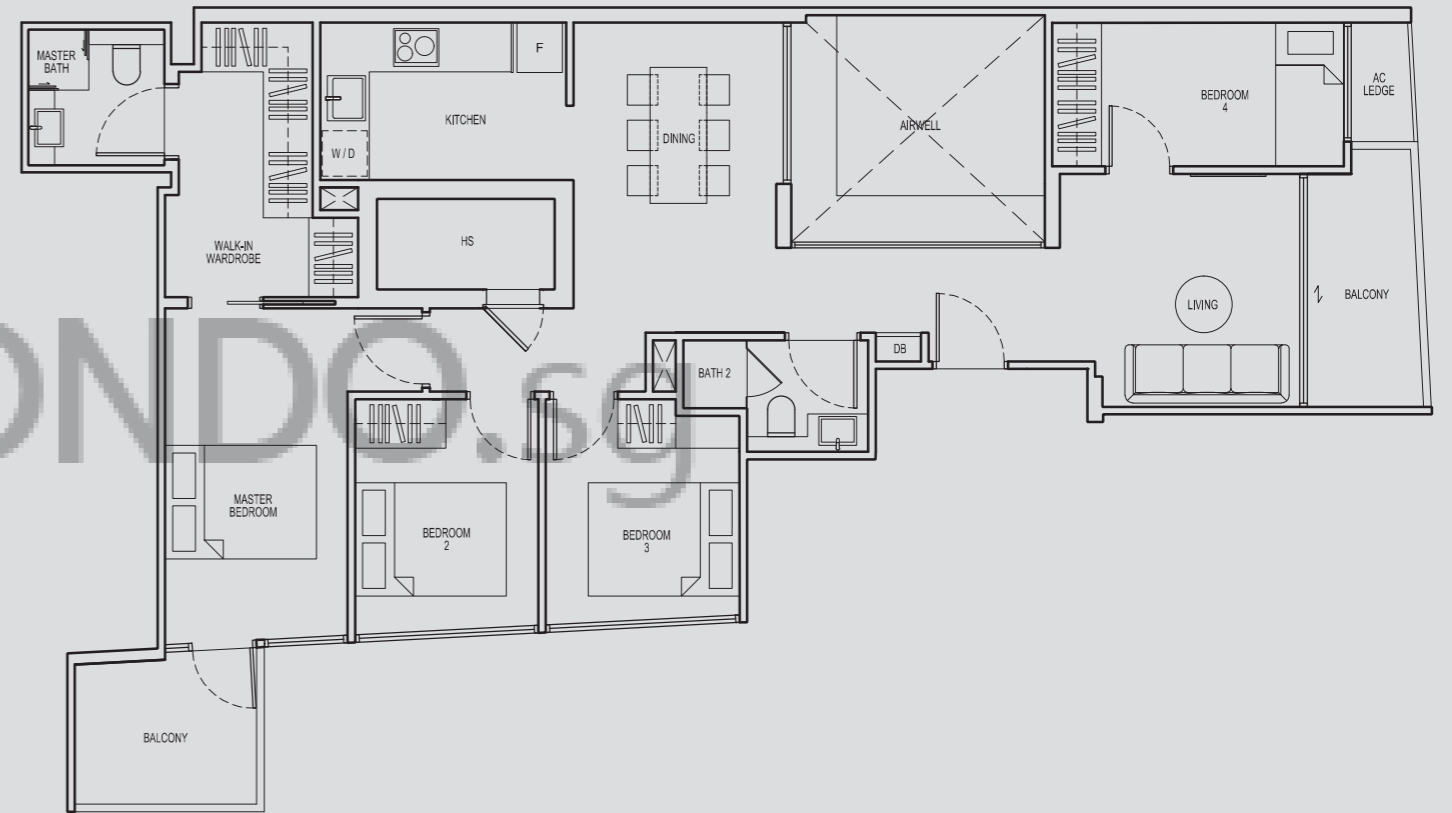
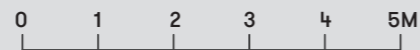
Key Plan: 8th Storey



**Area**  
108 sqm  
(1163 sqft)

333 Guillemard Road  
Singapore 399758

#08-06



**Note:**  
All floor areas indicated are inclusive of AC Ledge, Balcony and Private Enclosed Space (PES), where applicable. All floor areas are estimated only and subject to final survey. All floor plans are subject to changes as may be required or approved by the relevant authorities.

# The East Block

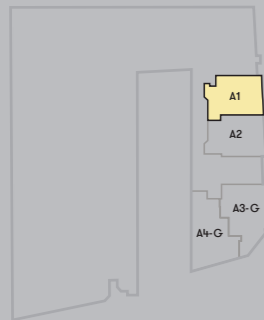




# Type A1 1 Bedroom

## The East Block

Key Plan: 1st Storey

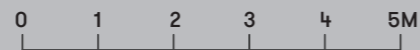
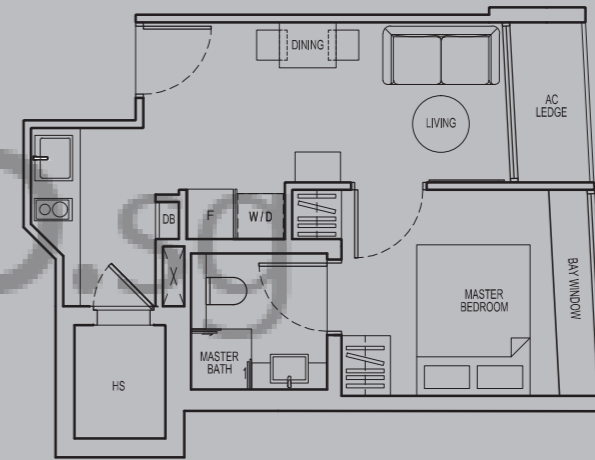


### Area

36 sqm  
(388 sqft)

333 Guillemard Road  
Singapore 399758

#01-07



**Note:**

All floor areas indicated are inclusive of AC Ledge, Balcony and Private Enclosed Space (PES), where applicable. All floor areas are estimated only and subject to final survey. All floor plans are subject to changes as may be required or approved by the relevant authorities.

# Type A2 1 Bedroom

## The East Block

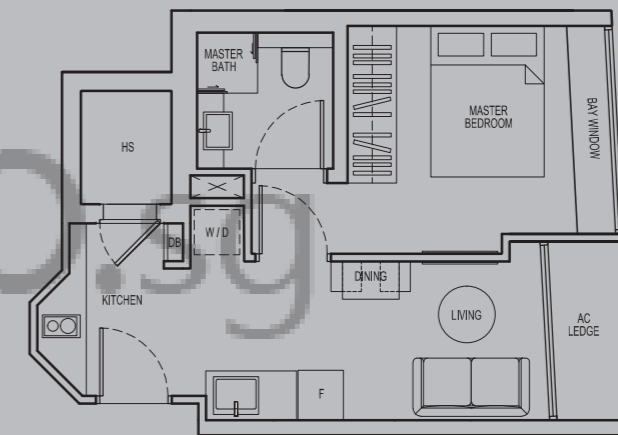
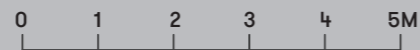
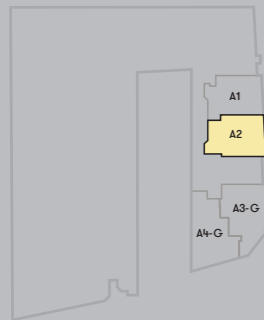
### Area

38 sqm  
(409 sqft)

335 Guillemard Road  
Singapore 399758

#01-08

Key Plan: 1st Storey



**Note:**

All floor areas indicated are inclusive of AC Ledge, Balcony and Private Enclosed Space (PES), where applicable. All floor areas are estimated only and subject to final survey. All floor plans are subject to changes as may be required or approved by the relevant authorities.

# Type A3-G 1 Bedroom

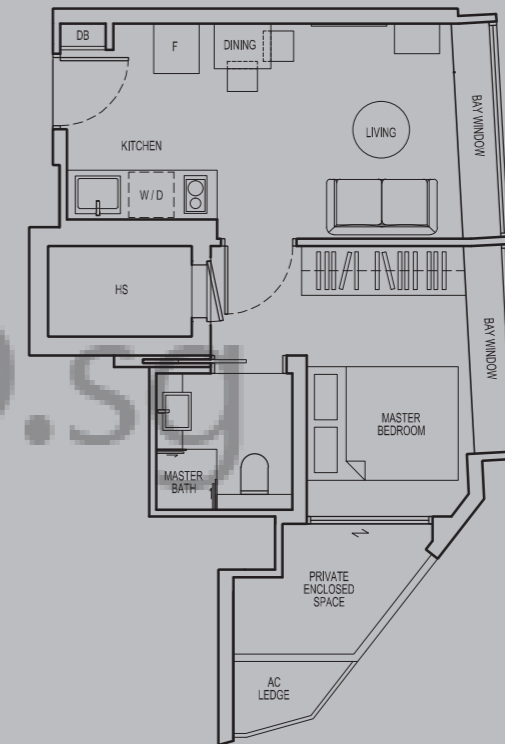
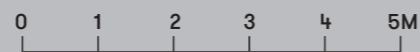
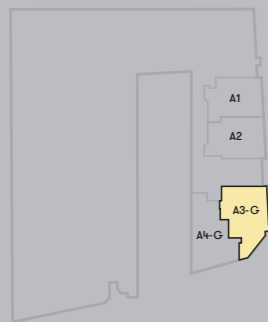
## The East Block

**Area**  
42 sqm  
(452 sqft)

335 Guillemard Road  
Singapore 399758

#01-09

Key Plan: 1st Storey

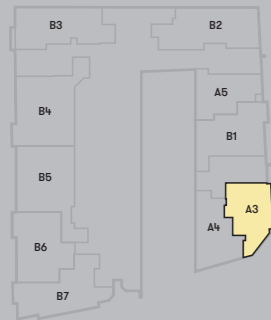


**Note:**  
All floor areas indicated are inclusive of AC Ledge, Balcony and Private Enclosed Space (PES), where applicable. All floor areas are estimated only and subject to final survey. All floor plans are subject to changes as may be required or approved by the relevant authorities.

# Type A3 1 Bedroom

## The East Block

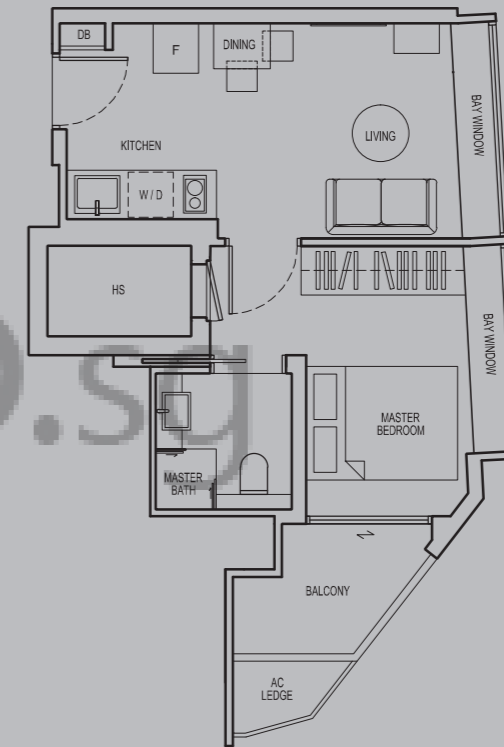
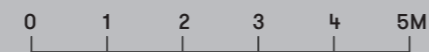
Key Plan: 2nd to 5th Storey



**Area**  
42 sqm  
(452 sqft)

335 Guillemard Road  
Singapore 399758

#02-09 to #05-09



**Note:**  
All floor areas indicated are inclusive of AC Ledge, Balcony and Private Enclosed Space (PES), where applicable. All floor areas are estimated only and subject to final survey. All floor plans are subject to changes as may be required or approved by the relevant authorities.

# Type A4-G 1 Bedroom

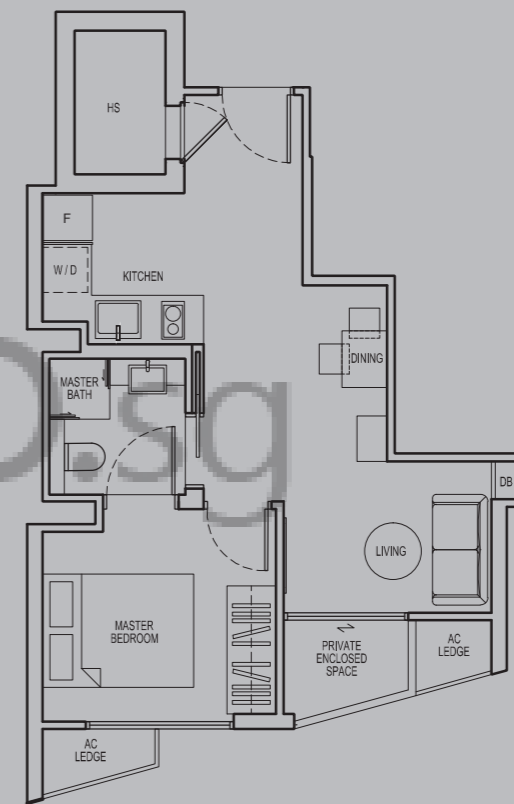
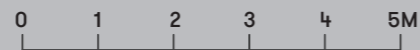
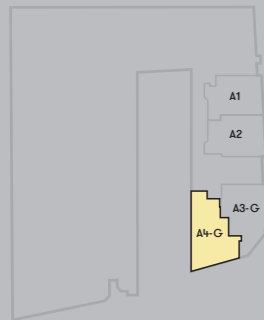
## The East Block

**Area**  
43 sqm  
(463 sqft)

335 Guillemard Road  
Singapore 399758

#01-10

Key Plan: 1st Storey



**Note:**

All floor areas indicated are inclusive of AC Ledge, Balcony and Private Enclosed Space (PES), where applicable. All floor areas are estimated only and subject to final survey. All floor plans are subject to changes as may be required or approved by the relevant authorities.

# Type A4 1 Bedroom

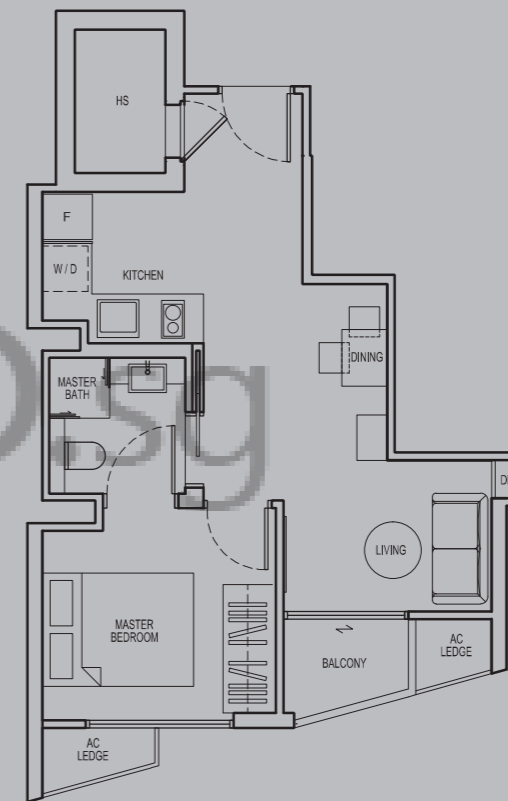
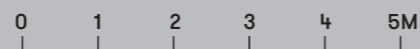
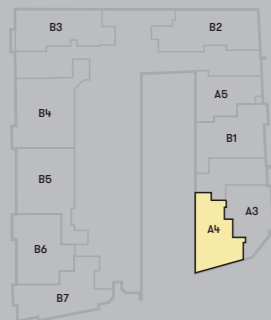
## The East Block

**Area**  
43 sqm  
(463 sqft)

335 Guillemard Road  
Singapore 399758

#02-10 to #05-10

Key Plan: 2nd to 5th Storey



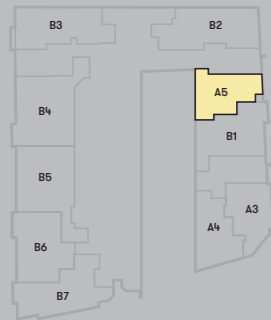
**Note:**

All floor areas indicated are inclusive of AC Ledge, Balcony and Private Enclosed Space (PES), where applicable. All floor areas are estimated only and subject to final survey. All floor plans are subject to changes as may be required or approved by the relevant authorities.

# Type A5 1 Bedroom

## The East Block

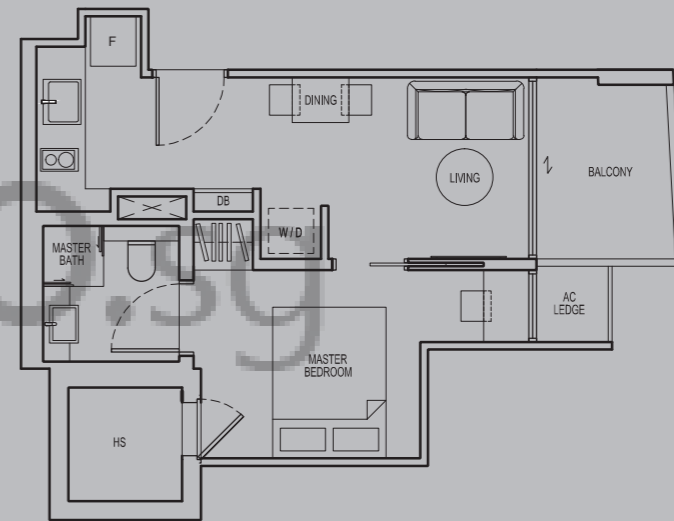
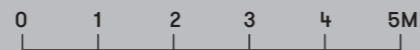
Key Plan: 2nd to 5th Storey



**Area**  
40 sqm  
(431 sqft)

333 Guillemard Road  
Singapore 399758

#02-07 to #05-07



**Note:**  
All floor areas indicated are inclusive of AC Ledge, Balcony and Private Enclosed Space (PES), where applicable. All floor areas are estimated only and subject to final survey. All floor plans are subject to changes as may be required or approved by the relevant authorities.

# Type B1 2 Bedroom

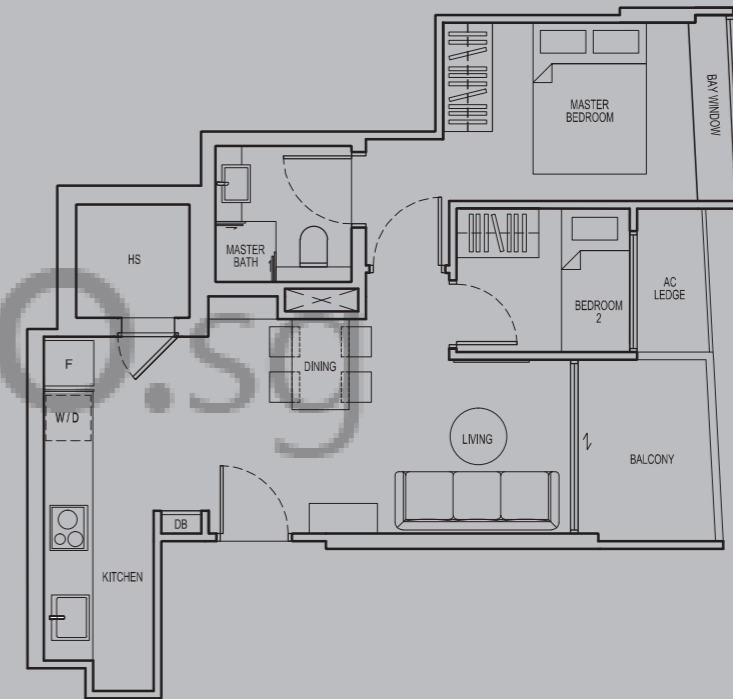
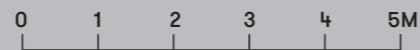
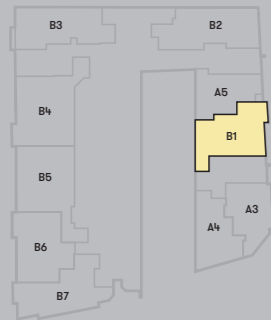
## The East Block

**Area**  
56 sqm  
(603 sqft)

335 Guillemard Road  
Singapore 399758

#02-08 to #05-08

Key Plan: 2nd to 5th Storey



**Note:**

All floor areas indicated are inclusive of AC Ledge, Balcony and Private Enclosed Space (PES), where applicable. All floor areas are estimated only and subject to final survey. All floor plans are subject to changes as may be required or approved by the relevant authorities.