



Home for Generations



FLOOR PLAN

## TYPE 3A / 3A' / 3AG

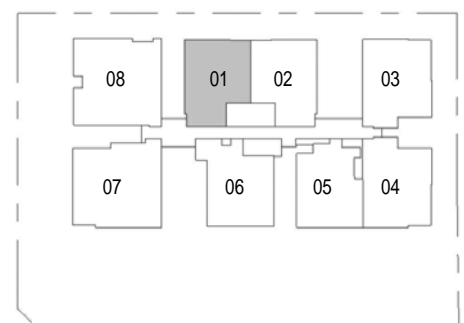
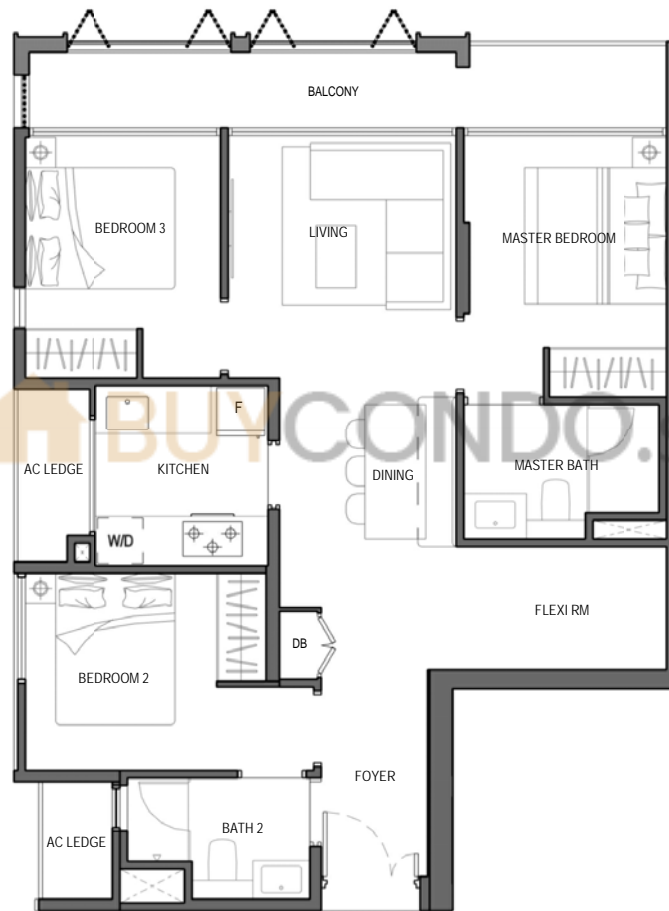
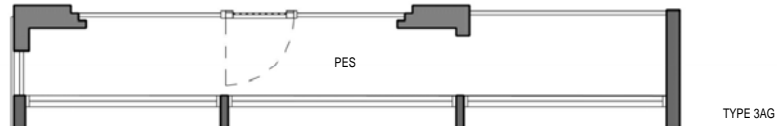
3 BEDROOM FLEXI

#01-01 (TYPE 3AG)

#02-01, #03-01 (TYPE 3A)

#04-01 (TYPE 3A')

88 sq m / 947 sq ft



Floor areas are inclusive of PES, balconies, a/c ledges and voids. Floor areas are approximate measurement and are subject to final survey.  
The plans are subject to changes as required or approved by relevant authorities.  
The balconies shall not be enclosed unless with approved balcony screens.

## TYPE 3Am / 3Am' / 3AmG

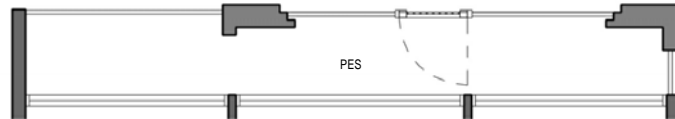
3 BEDROOM FLEXI

#01-02 (TYPE 3AmG)

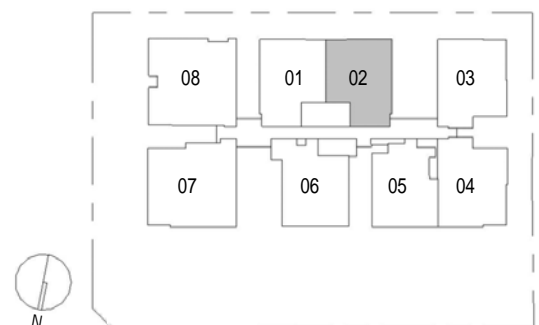
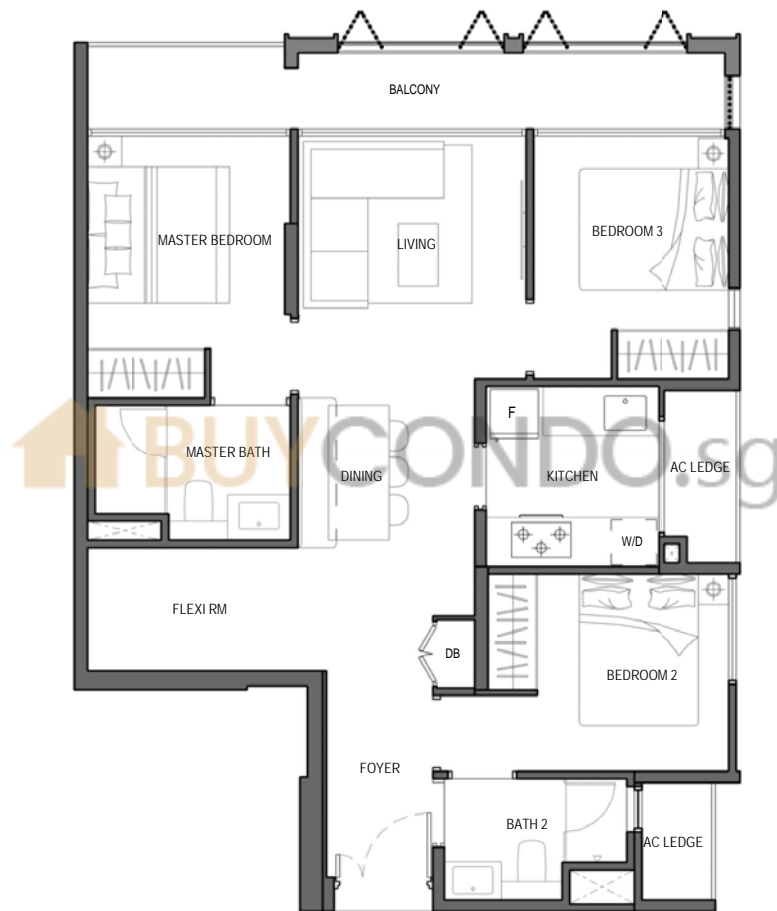
#02-02, #03-02 (TYPE 3Am)

#04-02 (TYPE 3Am')

88 sq m / 947 sq ft



TYPE 3AmG

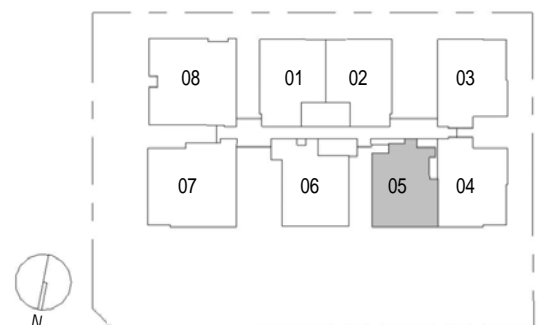
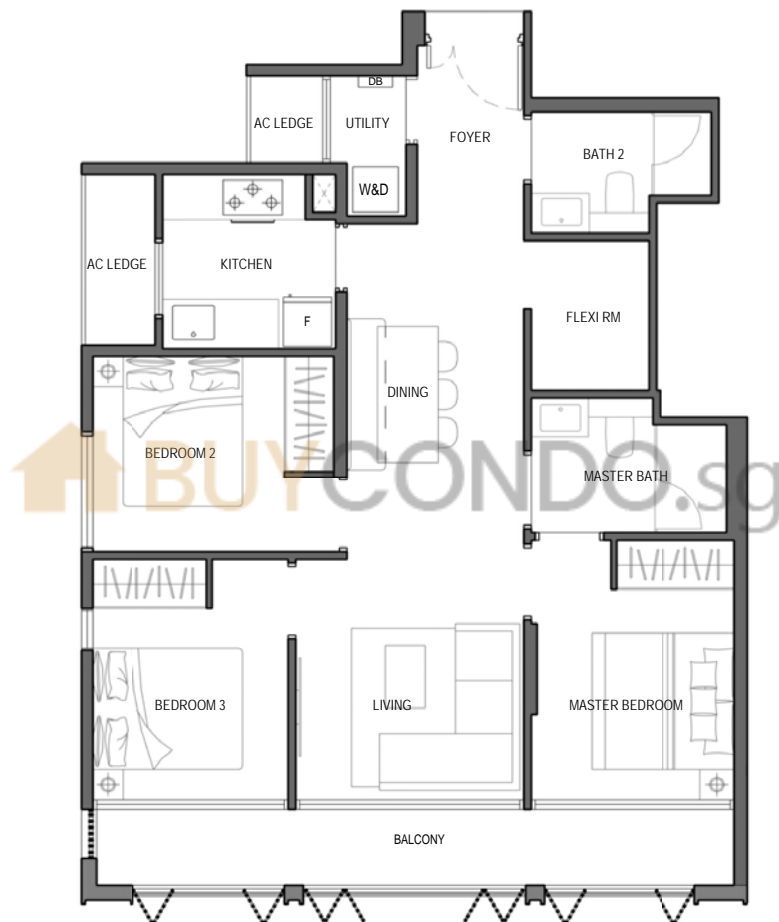


Floor areas are inclusive of PES, balconies, a/c ledges and voids. Floor areas are approximate measurement and are subject to final survey.  
The plans are subject to changes as required or approved by relevant authorities.  
The balconies shall not be enclosed unless with approved balcony screens.

## TYPE 3B / 3B'

3 BEDROOM FLEXI + UTILITY  
#02-05, #03-05 (TYPE 3B) #04-05  
(TYPE 3B')

88 sq m / 947 sq ft



Floor areas are inclusive of PES, balconies, a/c ledges and voids. Floor areas are approximate measurement and are subject to final survey.  
The plans are subject to changes as required or approved by relevant authorities.  
The balconies shall not be enclosed unless with approved balcony screens.

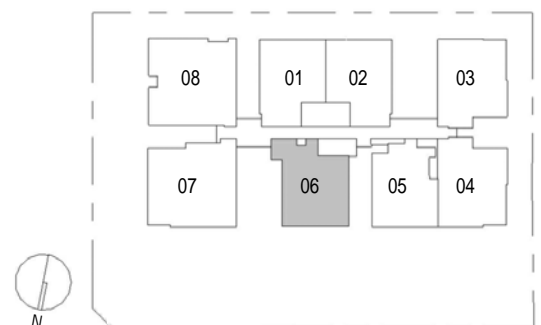
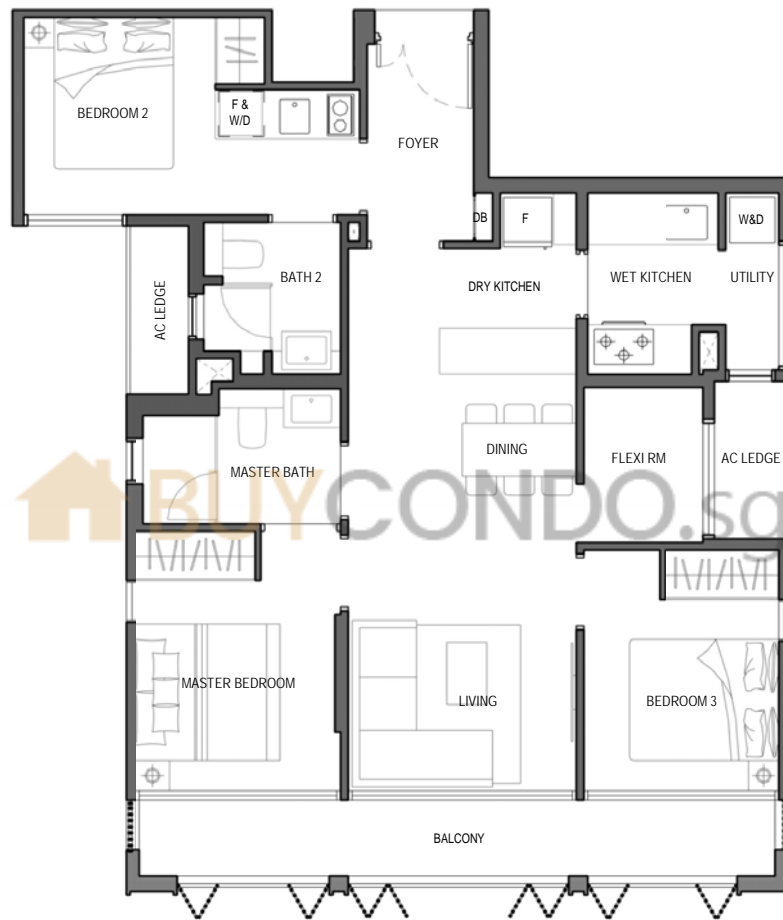
## TYPE 3C / 3C'

3 BEDROOM DUAL KEY FLEXI + UTILITY

#02-06, #03-06 (TYPE 3C)

#04-06 (TYPE 3C')

93 sq m / 1001 sq ft



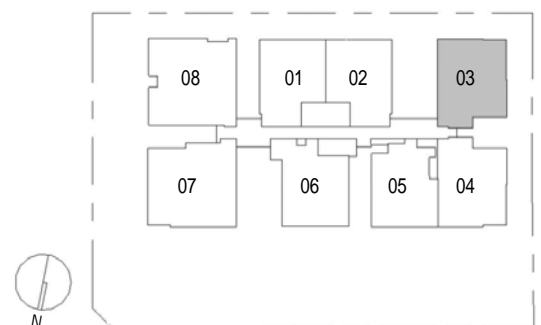
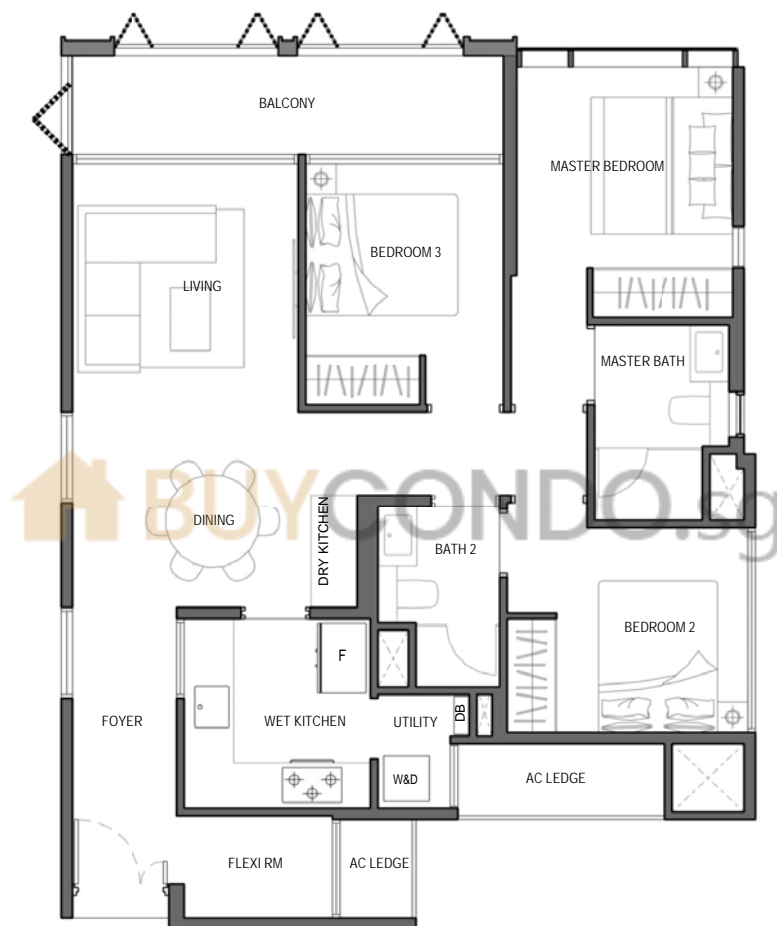
Floor areas are inclusive of PES, balconies, a/c ledges and voids. Floor areas are approximate measurement and are subject to final survey.  
The plans are subject to changes as required or approved by relevant authorities.  
The balconies shall not be enclosed unless with approved balcony screens.

## TYPE 3D

3 BEDROOM FLEXI + UTILITY

#02-03, #03-03

95 sq m / 1023 sq ft

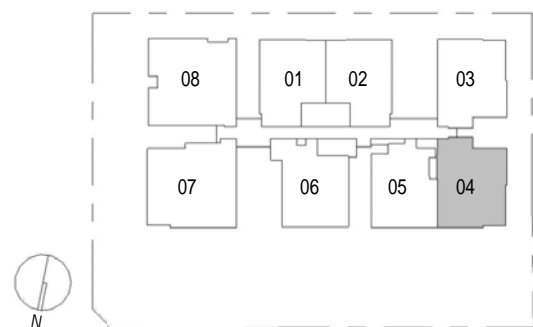
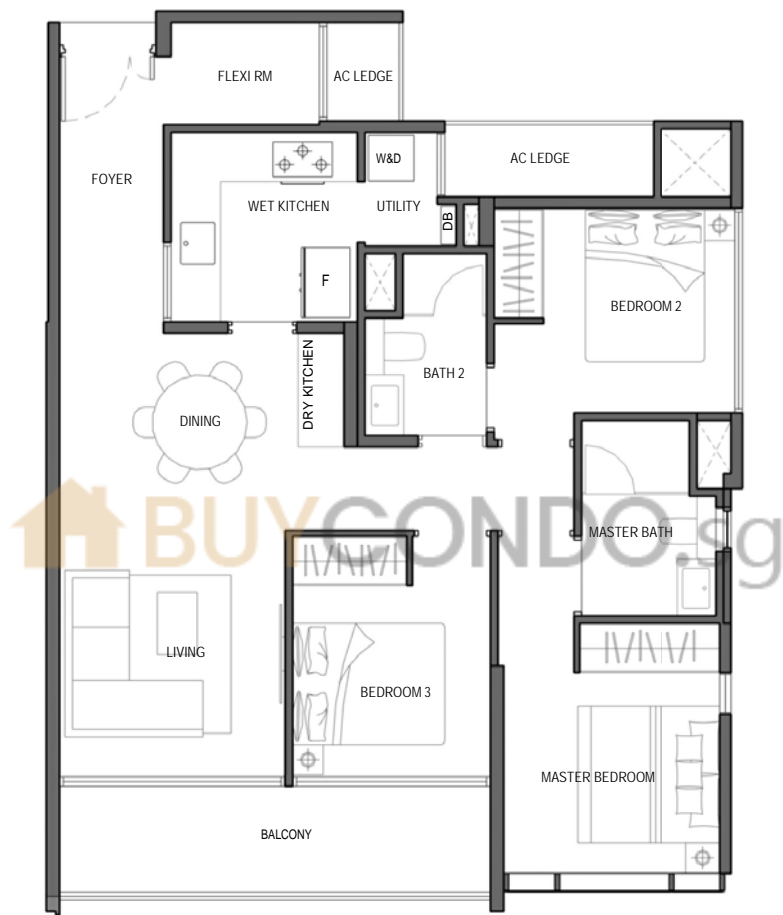


Floor areas are inclusive of PES, balconies, a/c ledges and voids. Floor areas are approximate measurement and are subject to final survey.  
The plans are subject to changes as required or approved by relevant authorities.  
The balconies shall not be enclosed unless with approved balcony screens.

TYPE 3Dm

3 BEDROOM FLEXI + UTILITY  
#02-04, #03-04

95 sq m / 1023 sq ft



Floor areas are inclusive of PES, balconies, a/c ledges and voids. Floor areas are approximate measurement and are subject to final survey.  
The plans are subject to changes as required or approved by relevant authorities.  
The balconies shall not be enclosed unless with approved balcony screens.

## TYPE 4A / 4A' / 4AG

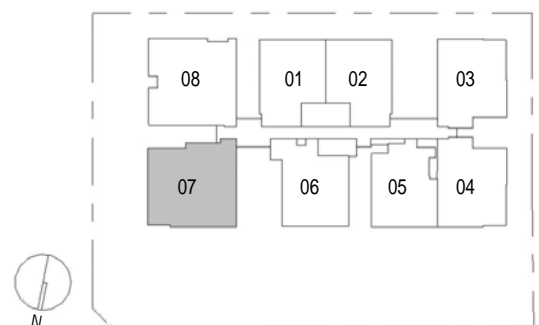
4 BEDROOM + UTILITY

#01-07 (TYPE 4AG)

#02-07, #03-07 (TYPE 4A)

#04-07 (TYPE 4A')

124 sq m / 1335 sq ft



Floor areas are inclusive of PES, balconies, a/c ledges and voids. Floor areas are approximate measurement and are subject to final survey.  
The plans are subject to changes as required or approved by relevant authorities.  
The balconies shall not be enclosed unless with approved balcony screens.



## TYPE 4B / 4B' / 4BG

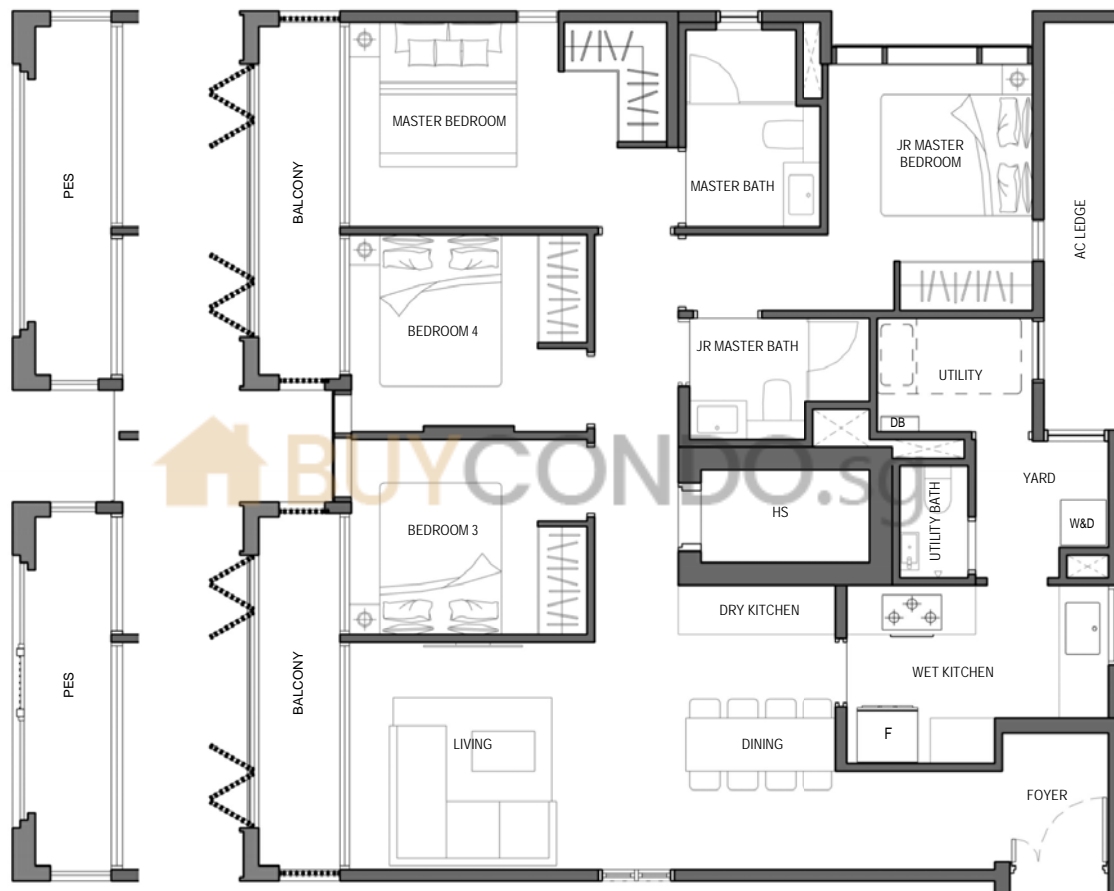
4 BEDROOM + UTILITY + YARD

#01-08 (TYPE 4BG)

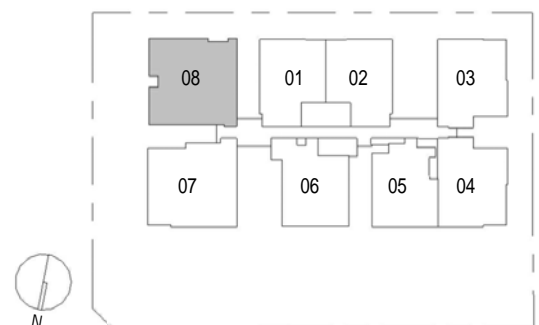
#02-08, #03-08 (TYPE 4B)

#04-08 (TYPE 4B')

125 sq m / 1346 sq ft



TYPE 4BG

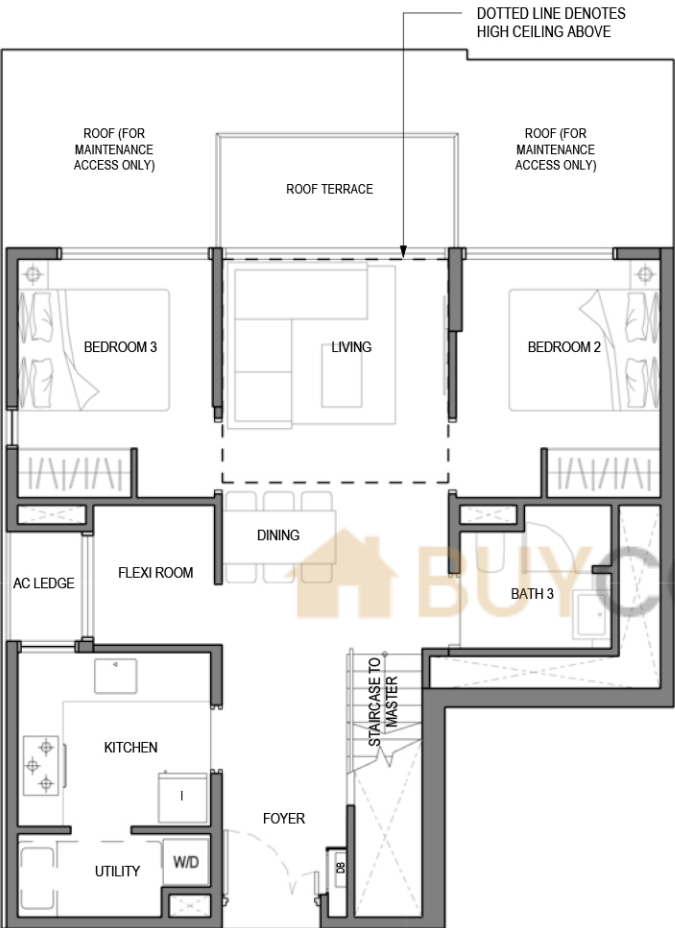


Floor areas are inclusive of PES, balconies, a/c ledges and voids. Floor areas are approximate measurement and are subject to final survey.  
The plans are subject to changes as required or approved by relevant authorities.  
The balconies shall not be enclosed unless with approved balcony screens.

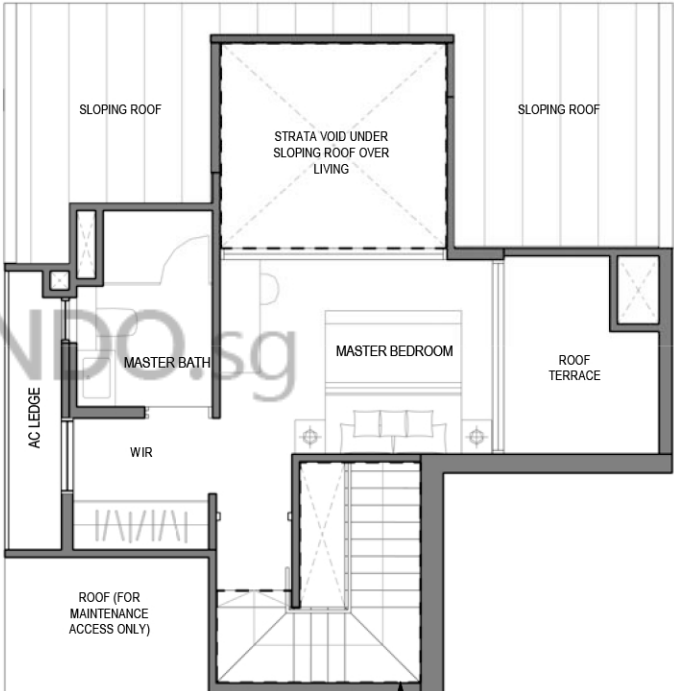
TYPE PH1

3 BEDROOM PENTHOUSE FLEXI + UTILITY  
#05-01

110 sq m / 1184 sq ft



5TH STOREY



ATTIC STOREY

STRATA VOID AREA  
ABOVE STAIRCASE



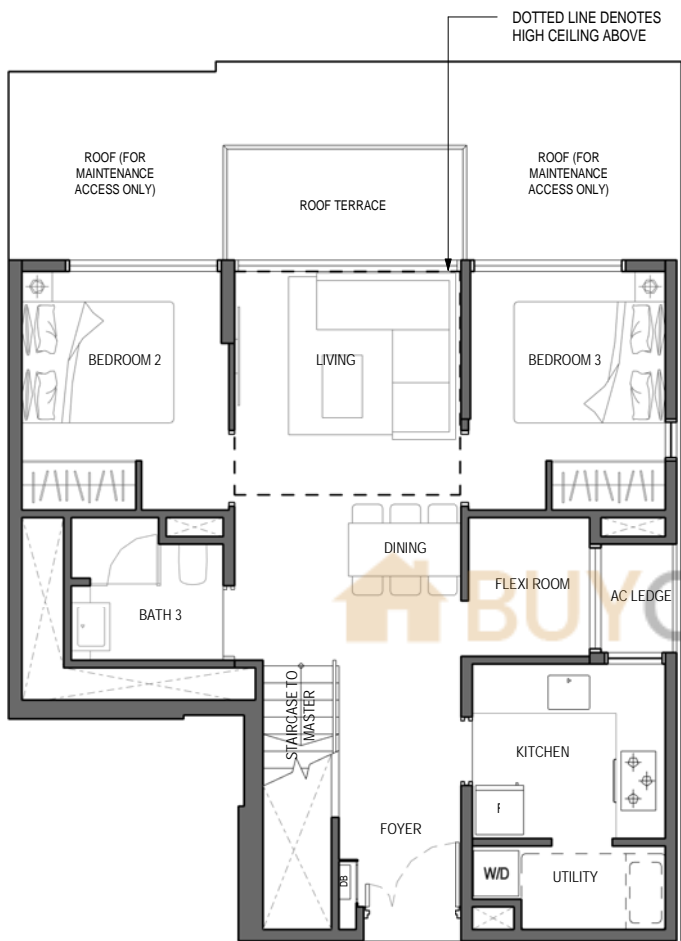
Floor areas are inclusive of PES, balconies, a/c ledges and voids. Floor areas are approximate measurement and are subject to final survey.  
The plans are subject to changes as required or approved by relevant authorities.  
The balconies shall not be enclosed unless with approved balcony screens.

TYPE PH1m

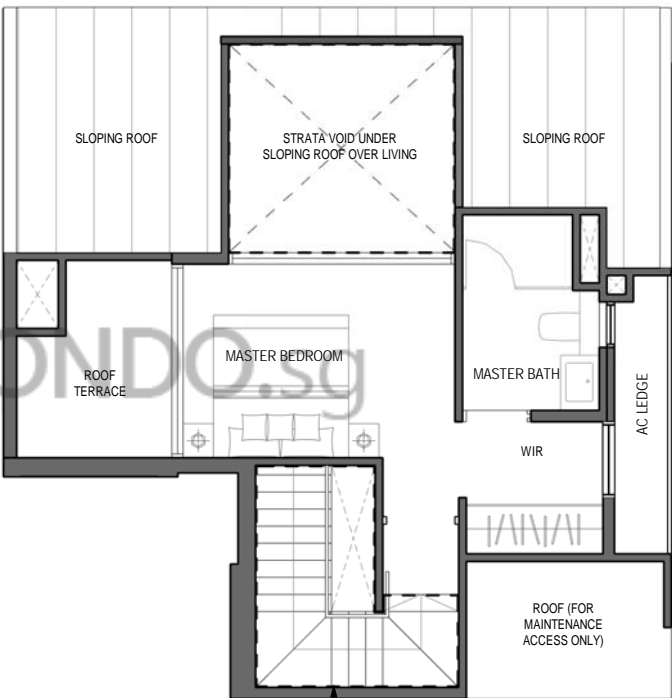
3 BEDROOM PENTHOUSE FLEXI + UTILITY

#05-02

110 sq m / 1184 sq ft



5TH STOREY



ATTIC STOREY



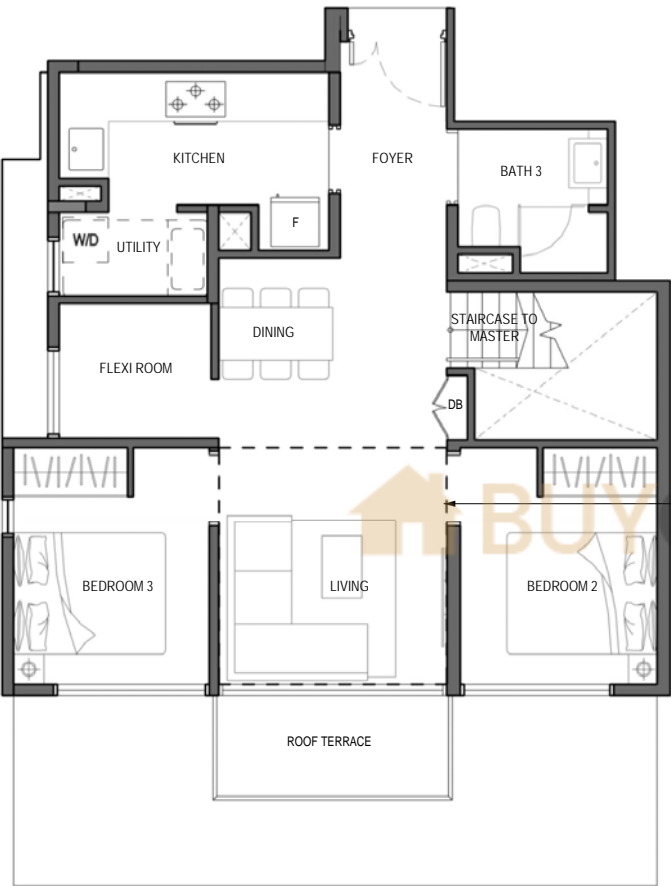
Floor areas are inclusive of PES, balconies, a/c ledges and voids. Floor areas are approximate measurement and are subject to final survey. The plans are subject to changes as required or approved by relevant authorities. The balconies shall not be enclosed unless with approved balcony screens.

TYPE PH2

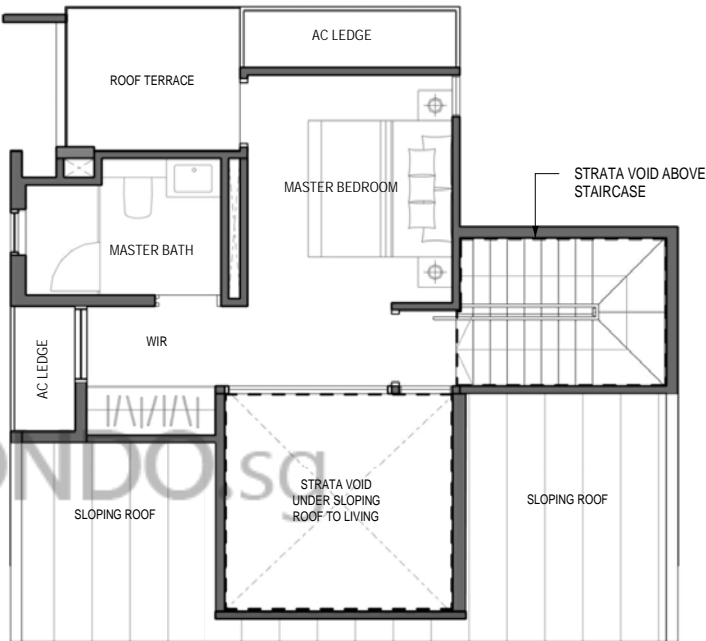
3 BEDROOM PENTHOUSE FLEXI + UTILITY

#05-05

112 sq m / 1206 sq ft



5TH STOREY



ATTIC STOREY



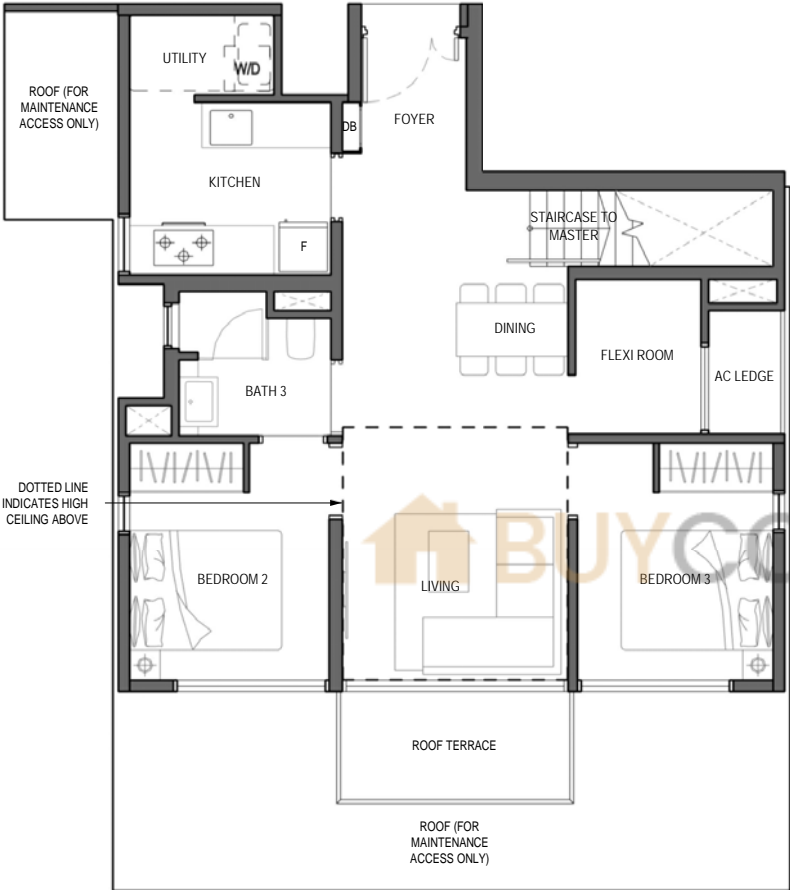
Floor areas are inclusive of PES, balconies, a/c ledges and voids. Floor areas are approximate measurement and are subject to final survey. The plans are subject to changes as required or approved by relevant authorities. The balconies shall not be enclosed unless with approved balcony screens.

TYPE PH3

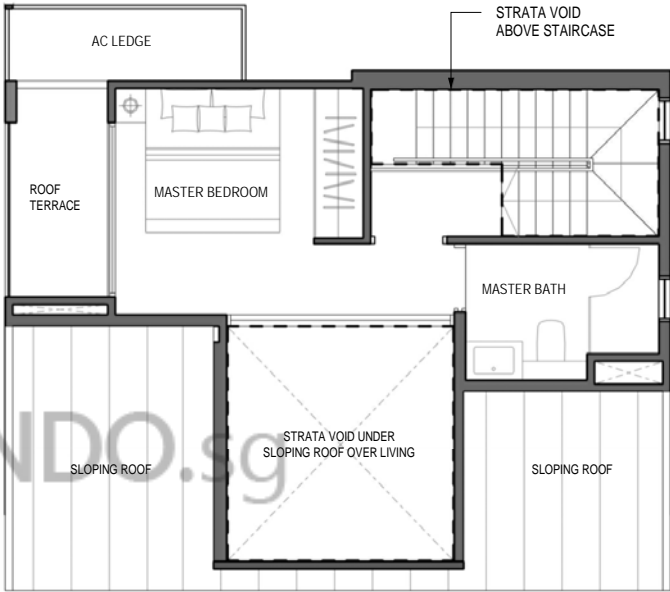
3 BEDROOM PENTHOUSE FLEXI + UTILITY

#05-06

110 sq m / 1184 sq ft



5TH STOREY



ATTIC STOREY



Floor areas are inclusive of PES, balconies, a/c ledges and voids. Floor areas are approximate measurement and are subject to final survey. The plans are subject to changes as required or approved by relevant authorities. The balconies shall not be enclosed unless with approved balcony screens.

TYPE PH4

3 BEDROOM PENTHOUSE FLEXI + UTILITY

#05-07

123 sq m / 1324 sq ft



Floor areas are inclusive of PES, balconies, a/c ledges and voids. Floor areas are approximate measurement and are subject to final survey. The plans are subject to changes as required or approved by relevant authorities. The balconies shall not be enclosed unless with approved balcony screens.

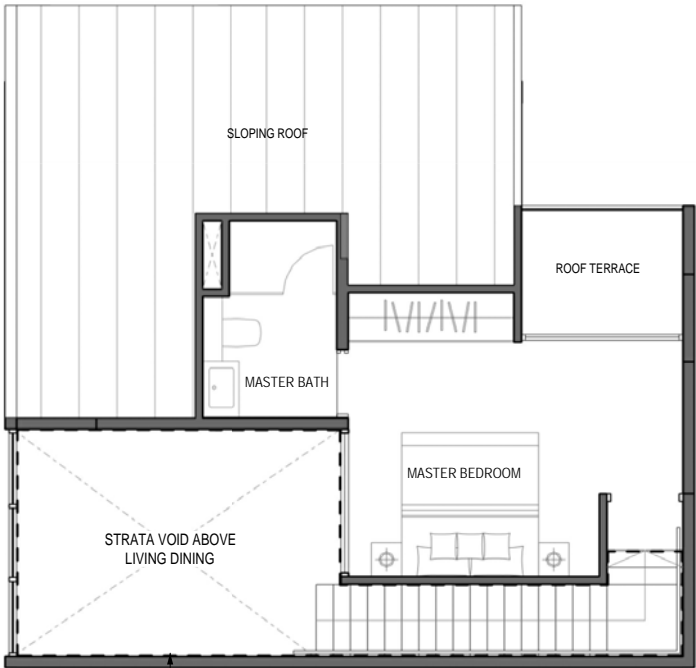
TYPE PH5

3 BEDROOM PENTHOUSE FLEXI + UTILITY

#05-08

121 sq m / 1302 sq ft

ATTIC STOREY



5TH STOREY

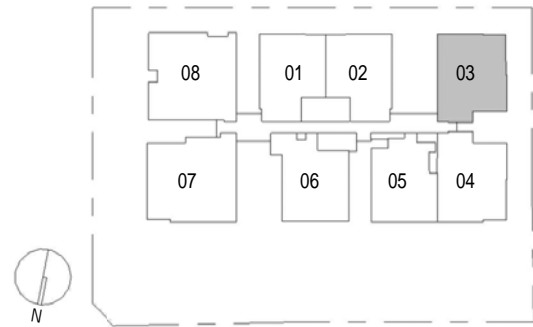
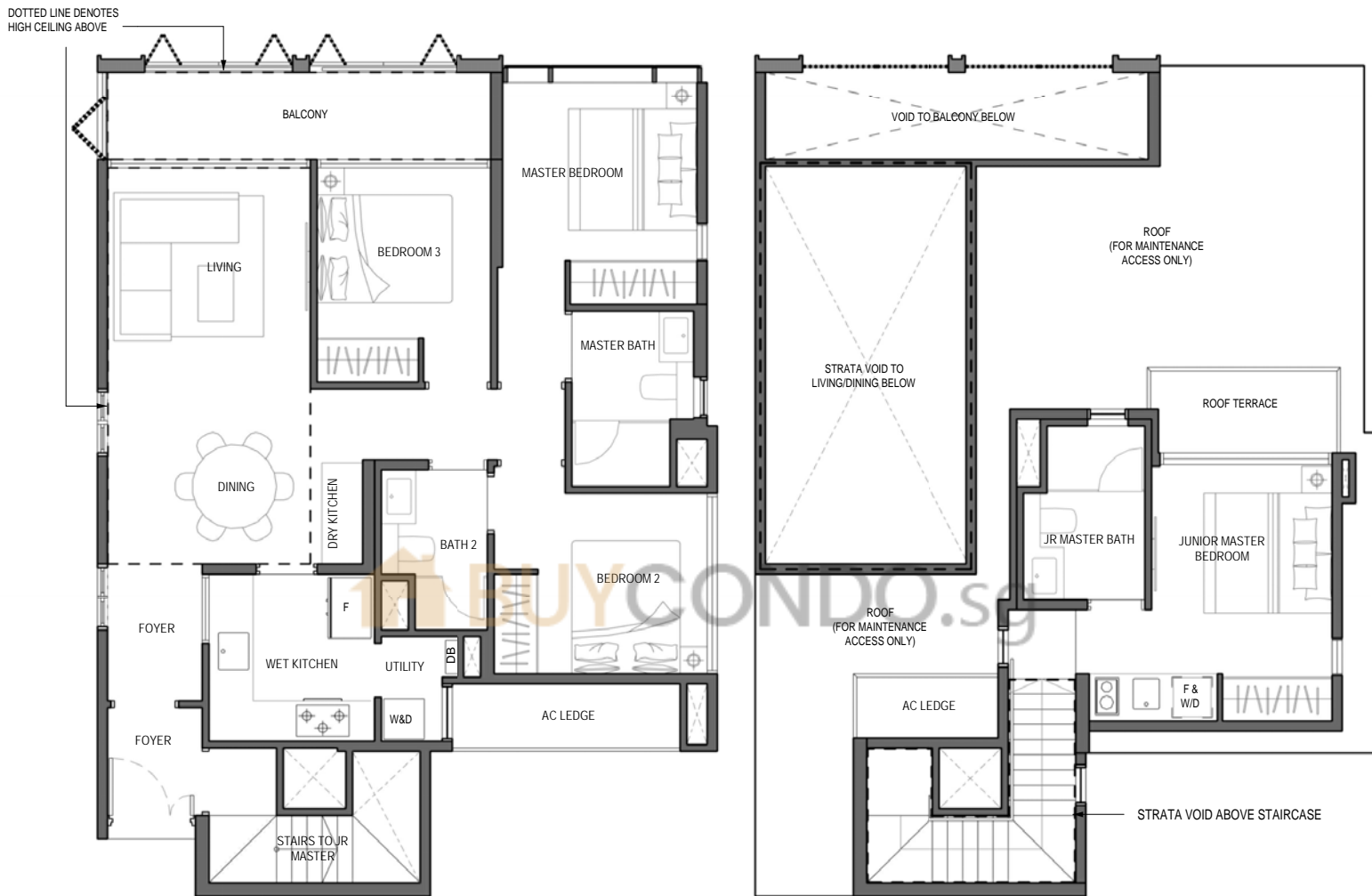


Floor areas are inclusive of PES, balconies, a/c ledges and voids. Floor areas are approximate measurement and are subject to final survey. The plans are subject to changes as required or approved by relevant authorities. The balconies shall not be enclosed unless with approved balcony screens.

TYPE PH6

4 BEDROOM DUAL KEY PH + UTILITY  
#04-03

148 sq m / 1593 sq ft



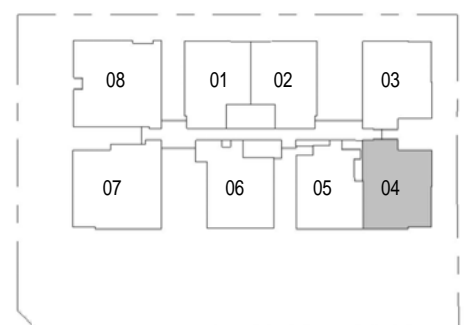
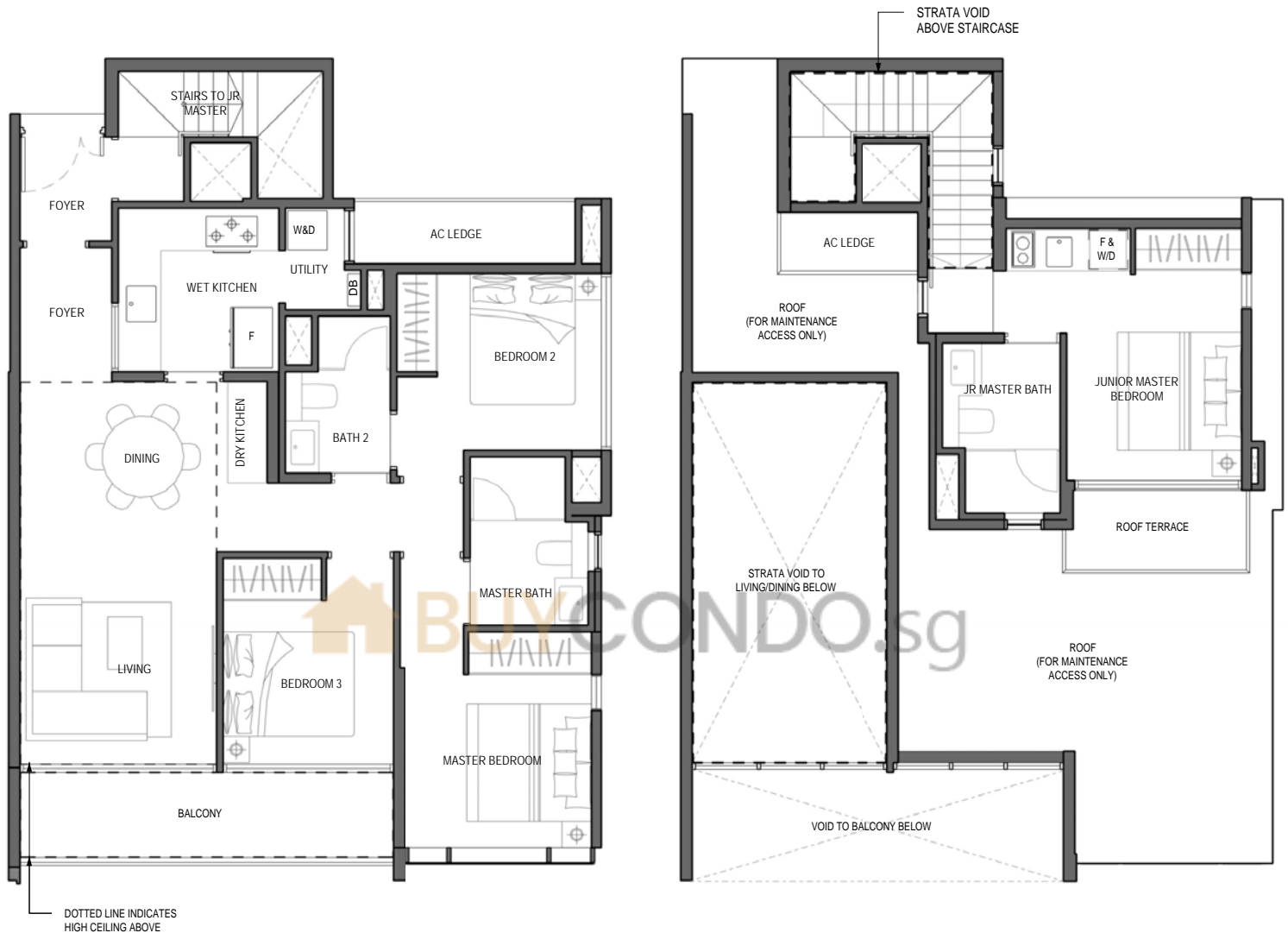
Floor areas are inclusive of PES, balconies, a/c ledges and voids. Floor areas are approximate measurement and are subject to final survey. The plans are subject to changes as required or approved by relevant authorities. The balconies shall not be enclosed unless with approved balcony screens.



# TYPE PH6m

4 BEDROOM DUAL KEY PH + UTILITY  
#04-04

148 sq m / 1593 sq ft



Floor areas are inclusive of PES, balconies, a/c ledges and voids. Floor areas are approximate measurement and are subject to final survey.  
The plans are subject to changes as required or approved by relevant authorities.  
The balconies shall not be enclosed unless with approved balcony screens.

 BUYCONDO.sg

