

# One Bedroom Apartment

## Type A4

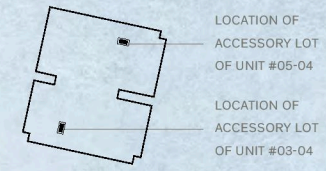
**UNIT SIZE**

Approx. 59 m<sup>2</sup> / 635 ft<sup>2</sup>

**UNIT NO.**

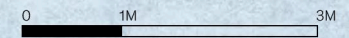
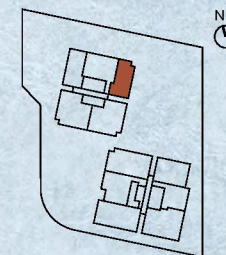
#03-04, #05-04

**BLOCK 1 LOWER ROOF KEY PLAN**



LOCATION OF ACCESSORY LOT OF UNIT #05-04

LOCATION OF ACCESSORY LOT OF UNIT #03-04



Area includes air-con accessory lot and balcony. The balcony shall not be enclosed unless with the approved balcony screen (refer to annexure). Please refer to key plans for orientation. All plans are subject to amendments as may be approved by the relevant authorities. Floor areas are approximate measurements and are subject to final survey. BP Approval No. A1653-17428-2017-BP02 dated 27/07/2018

# Two Bedroom Apartment

## Type B8

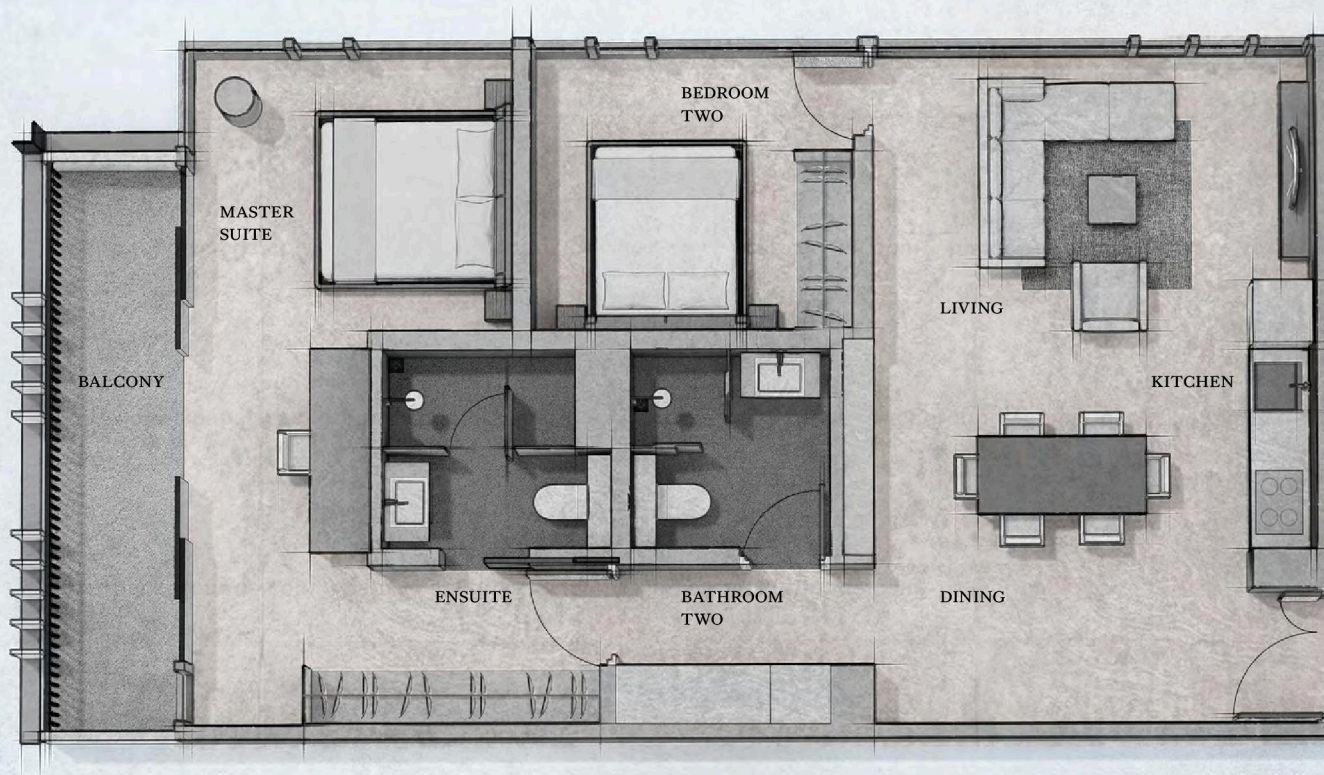
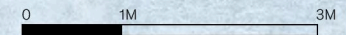
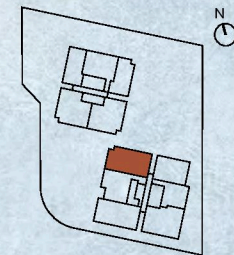
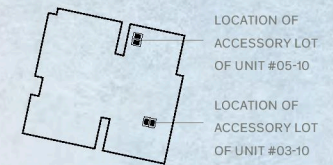
**UNIT SIZE**

Approx. 93 m<sup>2</sup> / 1,001 ft<sup>2</sup>

**UNIT NO.**

#03-10, #05-10

**BLOCK 2 LOWER ROOF KEY PLAN**



Area includes air-con accessory lot and balcony. The balcony shall not be enclosed unless with the approved balcony screen (refer to annexure). Please refer to key plans for orientation. All plans are subject to amendments as may be approved by the relevant authorities. Floor areas are approximate measurements and are subject to final survey. BP Approval No. A1653-17428-2017-BP02 dated 27/07/2018