

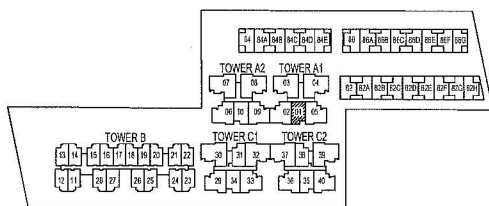
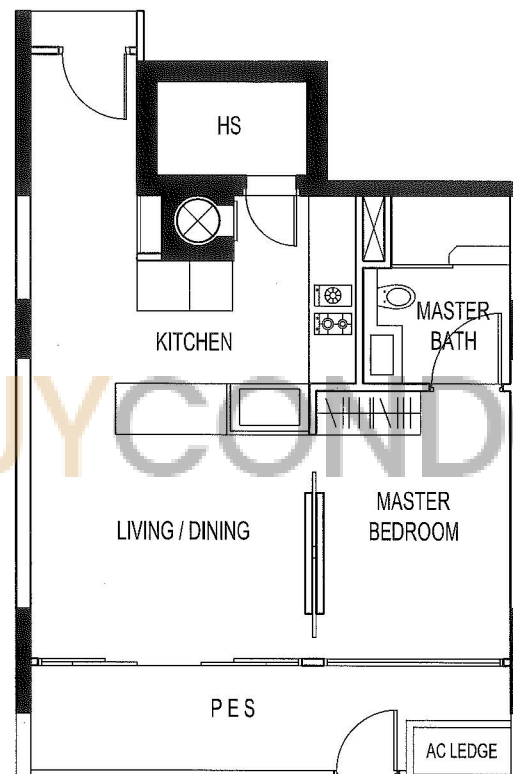
THE SEAWIND

UNIT # 01-01

70 LORONG M TELOK KURAU

Type - A2(p)

BELOW PLAN IS SUBJECT TO CHANGE AS MAY  
BE APPROVED BY THE RELEVANT AUTHORITIES



KEY PLAN  
NOT TO SCALE



- BP NO: A1136-00001-2008-BP01 DATED 24 OCT 2011
- A1136-00001-2008-BP02 DATED 13 SEP 2013
- A1136-00001-2008-BP04 DATED 29 DEC 2014
- A1136-00001-2008-BP05 DATED 19 MAY 2015

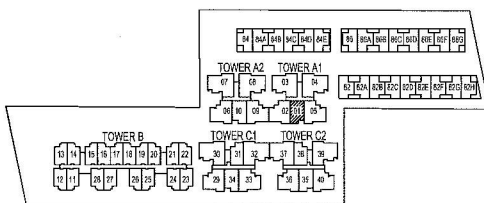
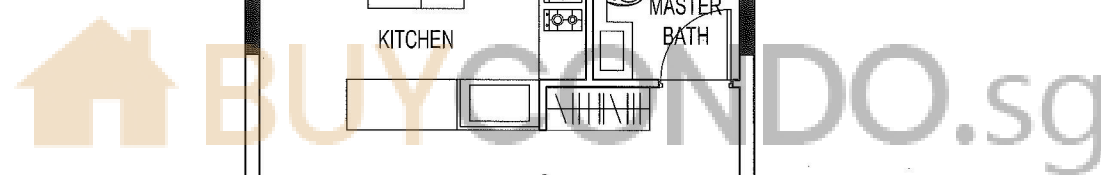
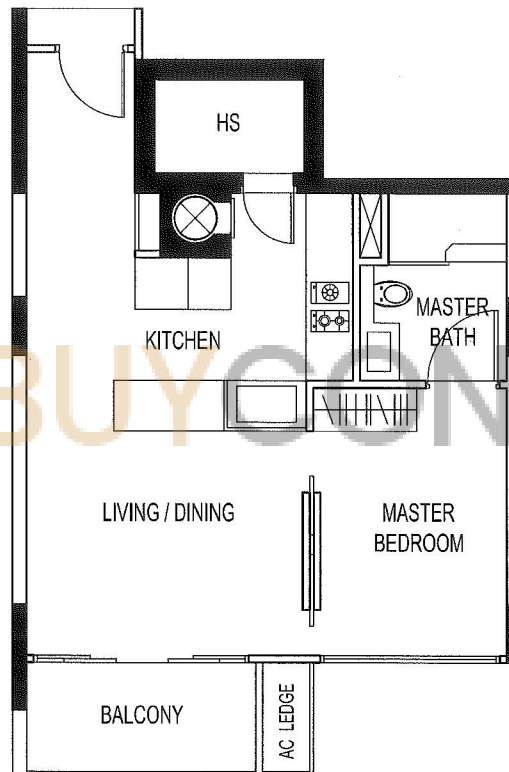
THE SEAWIND

UNIT # 03-01

70 LORONG M TELOK KURAU

Type - A2(b)

BELOW PLAN IS SUBJECT TO CHANGE AS MAY  
BE APPROVED BY THE RELEVANT AUTHORITIES



KEY PLAN  
NOT TO SCALE



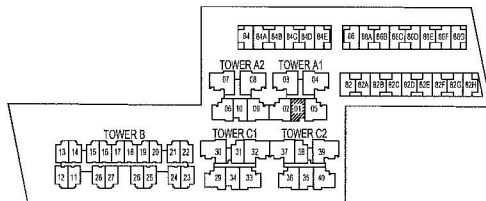
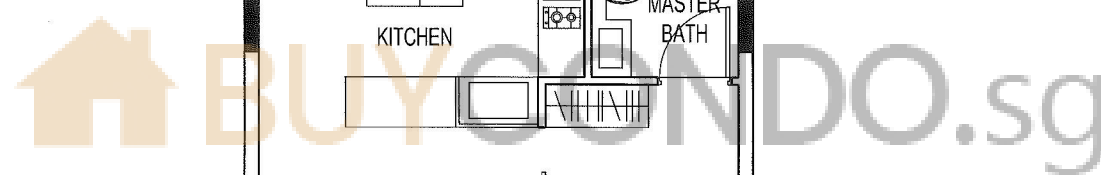
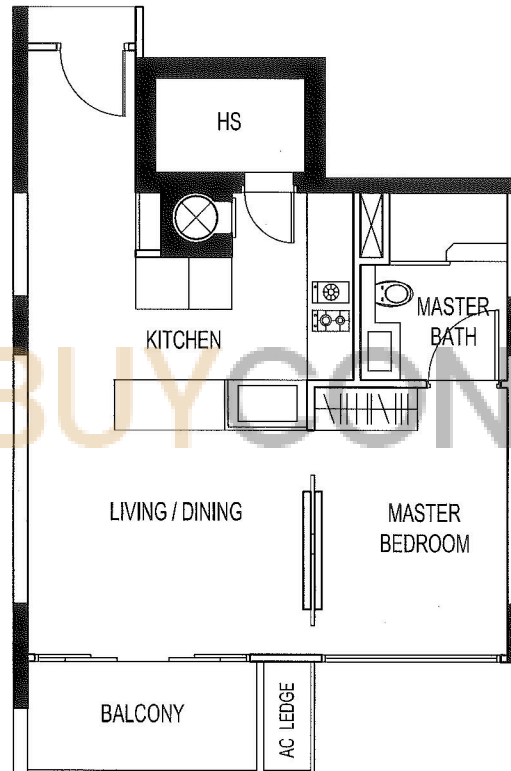
BP NO: A1136-00001-2008-BP01 DATED 24 OCT 2011  
 A1136-00001-2008-BP02 DATED 13 SEP 2013  
 A1136-00001-2008-BP04 DATED 29 DEC 2014  
 A1136-00001-2008-BP05 DATED 19 MAY 2015

THE SEAWIND

UNIT # 04-01  
70 LORONG M TELOK KURAU

Type - A2(b)

BELOW PLAN IS SUBJECT TO CHANGE AS MAY  
BE APPROVED BY THE RELEVANT AUTHORITIES



N  
KEY PLAN  
NOT TO SCALE



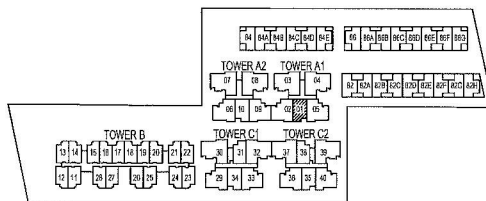
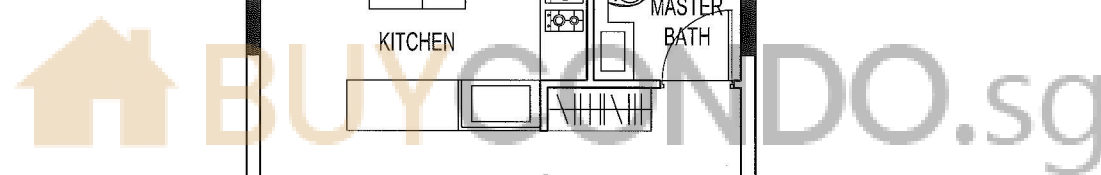
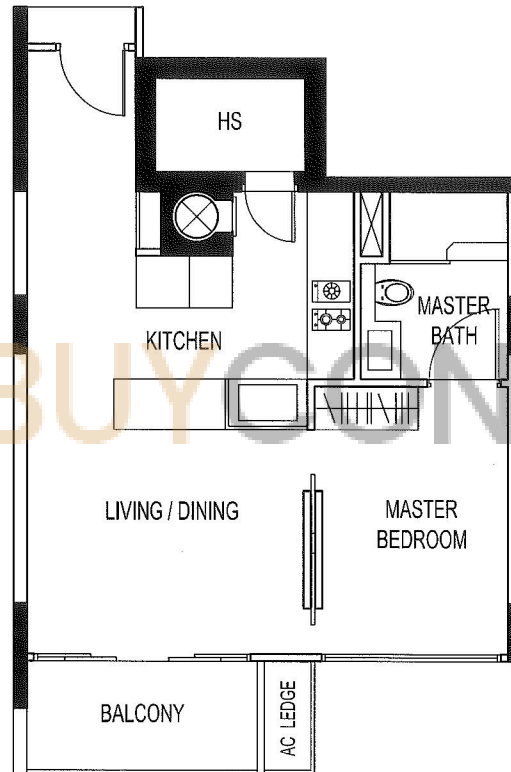
BP NO: A1136-00001-2008-BP01 DATED 24 OCT 2011  
 A1136-00001-2008-BP02 DATED 13 SEP 2013  
 A1136-00001-2008-BP04 DATED 29 DEC 2014  
 A1136-00001-2008-BP05 DATED 19 MAY 2015

THE SEAWIND

UNIT # 05-01  
70 LORONG M TELOK KURAU

Type - A2(b)

BELOW PLAN IS SUBJECT TO CHANGE AS MAY  
BE APPROVED BY THE RELEVANT AUTHORITIES



N  
KEY PLAN  
NOT TO SCALE



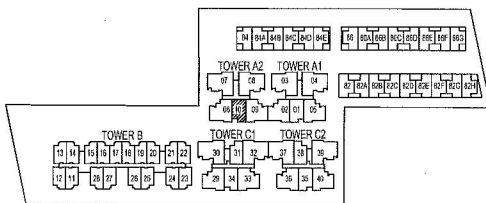
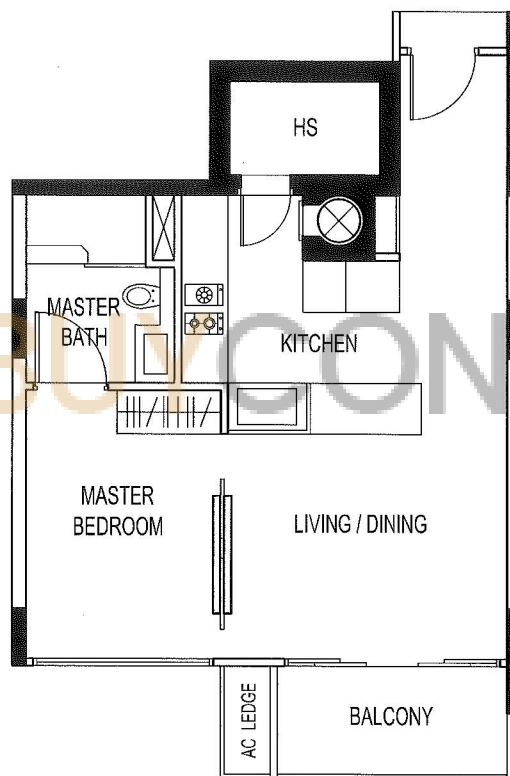
BP NO: A1136-00001-2008-BP01 DATED 24 OCT 2011  
A1136-00001-2008-BP02 DATED 13 SEP 2013  
A1136-00001-2008-BP04 DATED 29 DEC 2014  
A1136-00001-2008-BP05 DATED 19 MAY 2015

THE SEAWIND

UNIT # 04-10  
72 LORONG M TELOK KURAU

Type - A2(b)

BELOW PLAN IS SUBJECT TO CHANGE AS MAY  
BE APPROVED BY THE RELEVANT AUTHORITIES



N  
KEY PLAN  
NOT TO SCALE



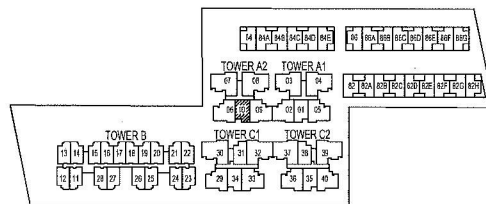
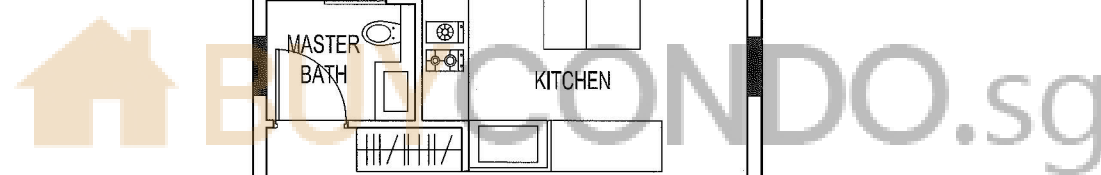
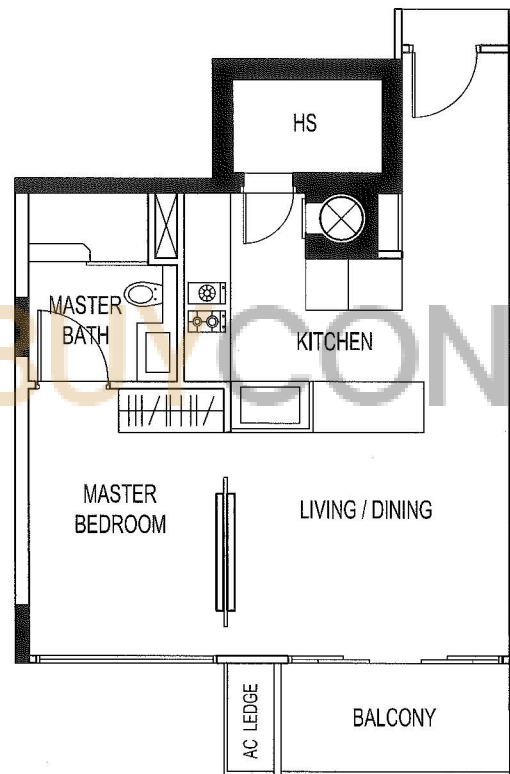
BP NO: A1136-00001-2008-BP01 DATED 24 OCT 2011  
 A1136-00001-2008-BP02 DATED 13 SEP 2013  
 A1136-00001-2008-BP04 DATED 29 DEC 2014  
 A1136-00001-2008-BP05 DATED 19 MAY 2015

THE SEAWIND

UNIT # 05-10  
72 LORONG M TELOK KURAU

Type - A2(b)

BELOW PLAN IS SUBJECT TO CHANGE AS MAY  
BE APPROVED BY THE RELEVANT AUTHORITIES



KEY PLAN  
NOT TO SCALE

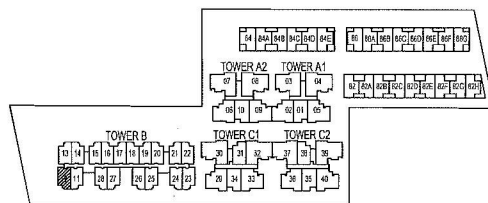
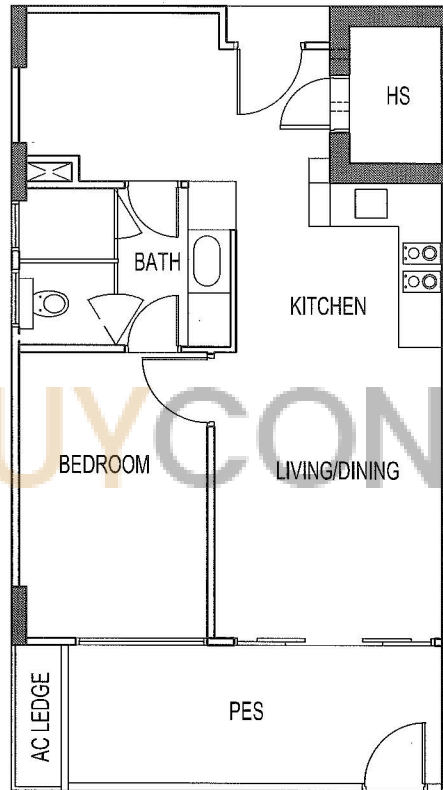


BP NO: A1136-00001-2008-BP01 DATED 24 OCT 2011  
A1136-00001-2008-BP02 DATED 13 SEP 2013  
A1136-00001-2008-BP04 DATED 29 DEC 2014  
A1136-00001-2008-BP05 DATED 19 MAY 2015

# THE SEAWIND

Type - SA4(p)

BELOW PLAN IS SUBJECT TO CHANGE AS MAY  
BE APPROVED BY THE RELEVANT AUTHORITIES



KEY PLAN  
NOT TO SCALE

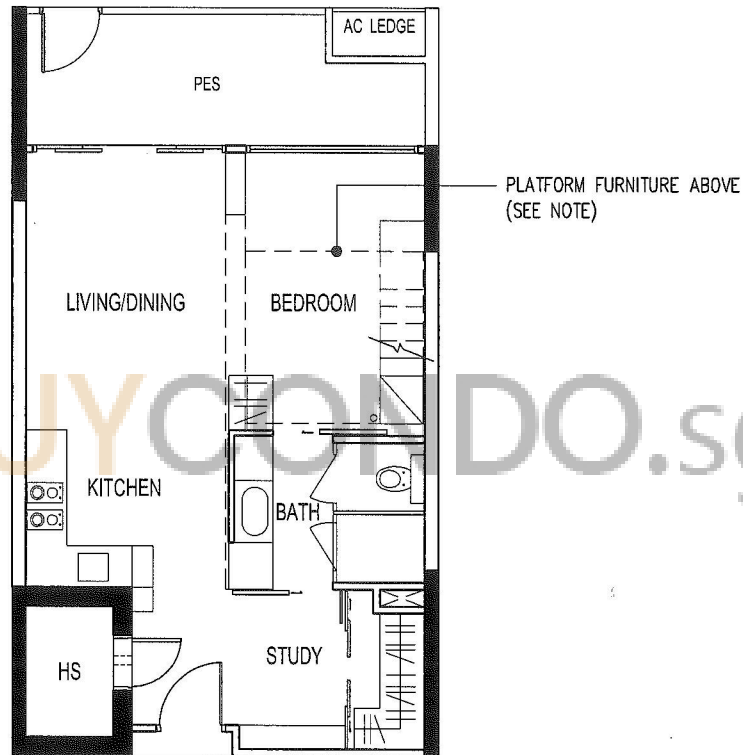


BP NO: A1136-00001-2008-BP01 DATED 24 OCT 2011  
A1136-00001-2008-BP02 DATED 13 SEP 2013  
A1136-00001-2008-BP04 DATED 29 DEC 2014  
A1136-00001-2008-BP05 DATED 19 MAY 2015

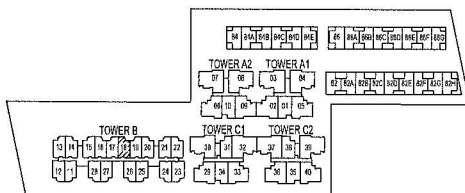
THE SEAWIND

Type - SA1(p)

BELOW PLAN IS SUBJECT TO CHANGE AS MAY  
BE APPROVED BY THE RELEVANT AUTHORITIES



NOTE:  
AREA OF PLATFORM FURNITURE IS  
NOT MORE THAN 5.0 SQM.



KEY PLAN  
NOT TO SCALE



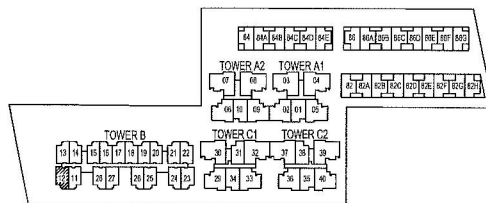
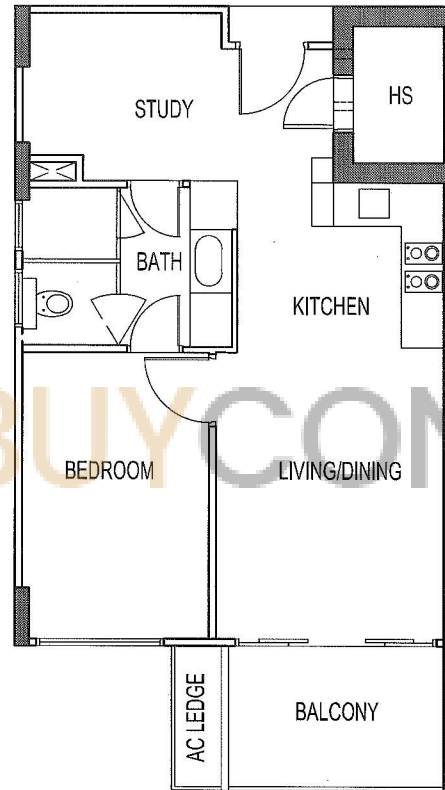
BP NO: A1136-00001-2008-BP01 DATED 24 OCT 2011  
 A1136-00001-2008-BP02 DATED 13 SEP 2013  
 A1136-00001-2008-BP04 DATED 29 DEC 2014  
 A1136-00001-2008-BP05 DATED 19 MAY 2015



THE SEAWIND

Type - SA4(b)

BELOW PLAN IS SUBJECT TO CHANGE AS MAY  
BE APPROVED BY THE RELEVANT AUTHORITIES



KEY PLAN  
NOT TO SCALE

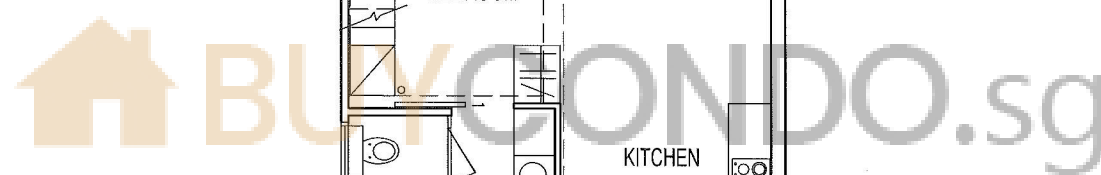
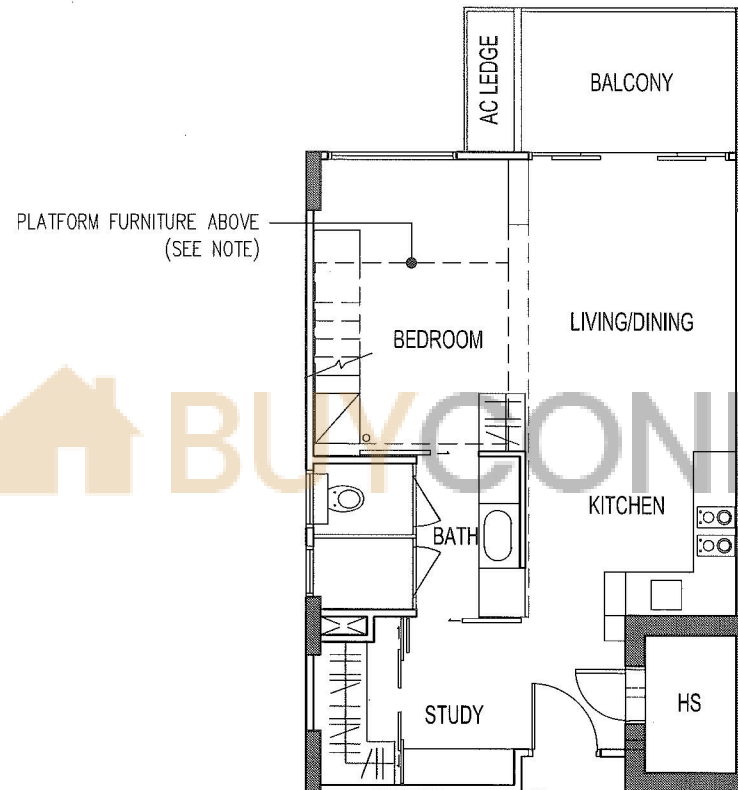


BP NO: A1136-00001-2008-BP01 DATED 24 OCT 2011  
 A1136-00001-2008-BP02 DATED 13 SEP 2013  
 A1136-00001-2008-BP04 DATED 29 DEC 2014  
 A1136-00001-2008-BP05 DATED 19 MAY 2015

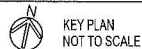
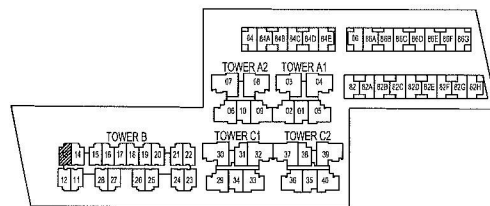
THE SEAWIND

Type - SA4(b)

BELOW PLAN IS SUBJECT TO CHANGE AS MAY  
BE APPROVED BY THE RELEVANT AUTHORITIES



NOTE:  
AREA OF PLATFORM FURNITURE IS  
NOT MORE THAN 5.0 SQM.

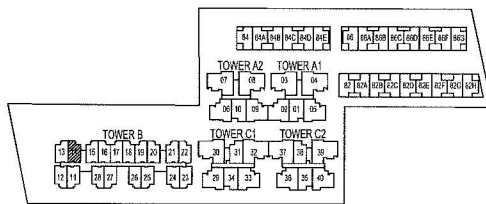
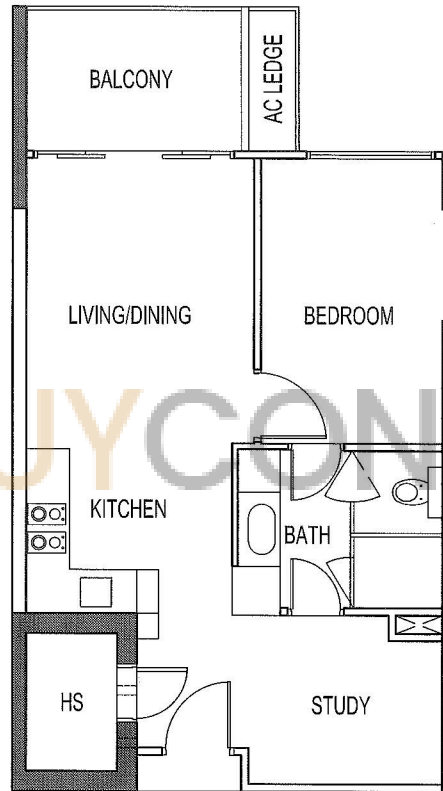



- BP NO: A1136-00001-2008-BP01 DATED 24 OCT 2011
- A1136-00001-2008-BP02 DATED 13 SEP 2013
- A1136-00001-2008-BP04 DATED 29 DEC 2014
- A1136-00001-2008-BP05 DATED 19 MAY 2015

THE SEAWIND

Type - SA2(b)

BELOW PLAN IS SUBJECT TO CHANGE AS MAY  
BE APPROVED BY THE RELEVANT AUTHORITIES



 KEY PLAN  
NOT TO SCALE

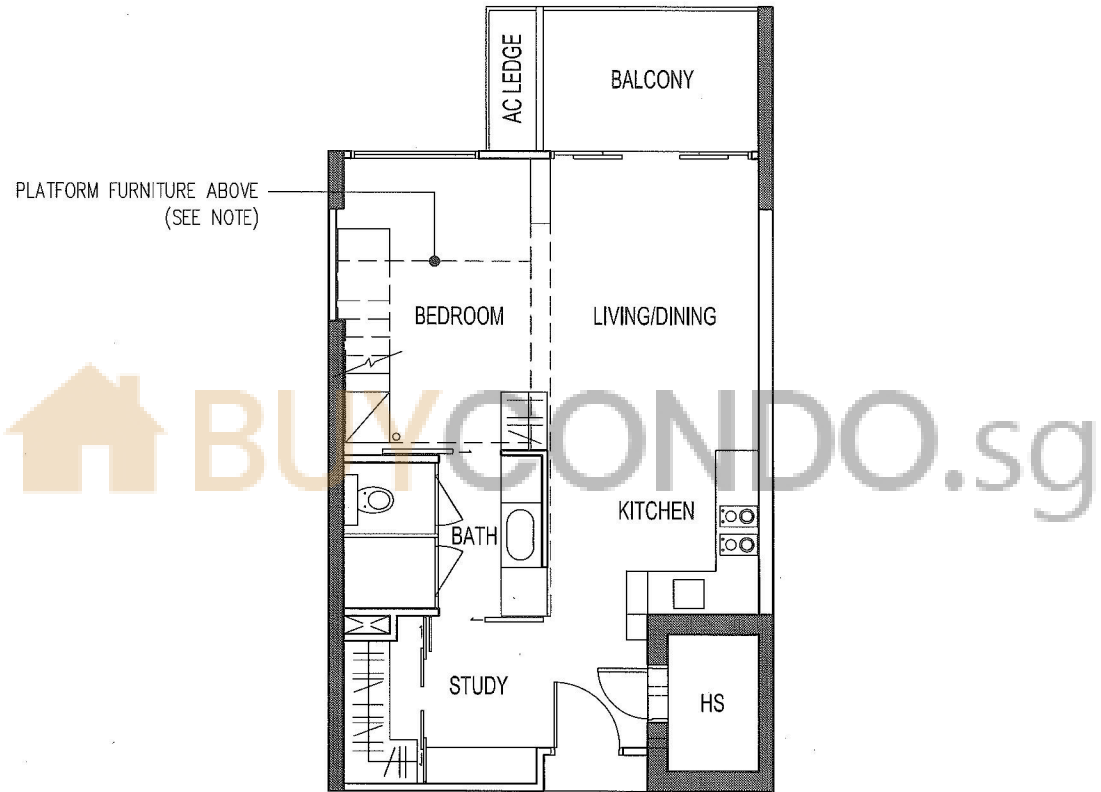


- BP NO: A1136-00001-2008-BP01 DATED 24 OCT 2011
- A1136-00001-2008-BP02 DATED 13 SEP 2013
- A1136-00001-2008-BP04 DATED 29 DEC 2014
- A1136-00001-2008-BP05 DATED 19 MAY 2015

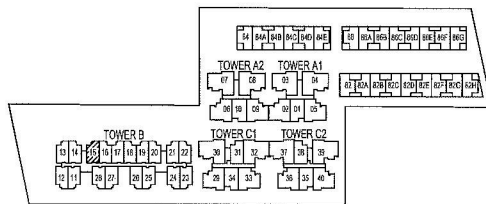
THE SEAWIND

Type - SA2(b)

BELOW PLAN IS SUBJECT TO CHANGE AS MAY  
BE APPROVED BY THE RELEVANT AUTHORITIES



NOTE:  
AREA OF PLATFORM FURNITURE IS  
NOT MORE THAN 5.0 SQM.



N  
KEY PLAN  
NOT TO SCALE

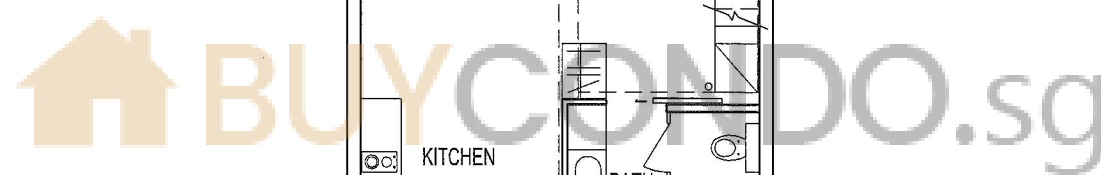
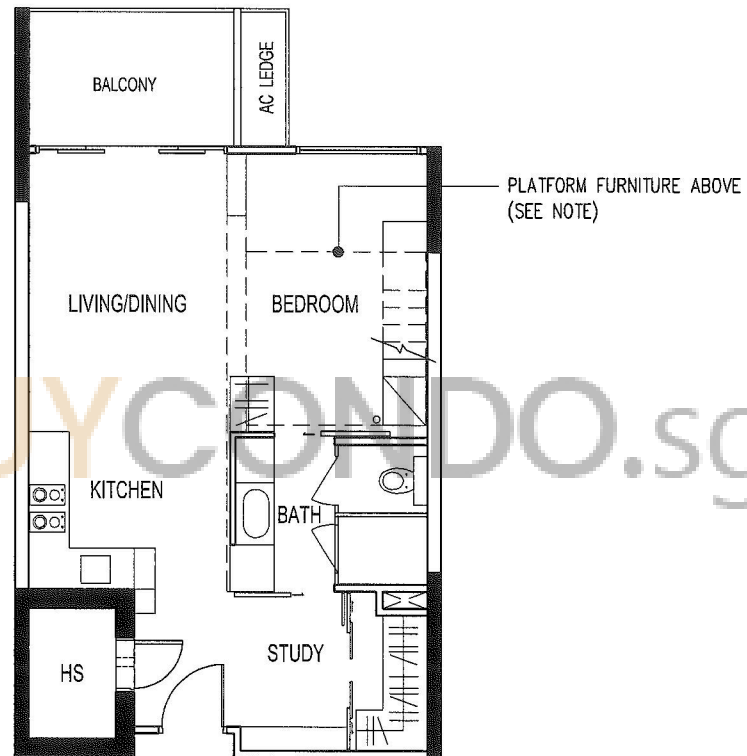


BP NO: A1136-00001-2008-BP01 DATED 24 OCT 2011  
A1136-00001-2008-BP02 DATED 13 SEP 2013  
A1136-00001-2008-BP04 DATED 29 DEC 2014  
A1136-00001-2008-BP05 DATED 19 MAY 2015

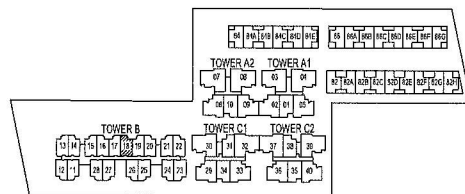
THE SEAWIND

Type - SA1(b)

BELOW PLAN IS SUBJECT TO CHANGE AS MAY  
BE APPROVED BY THE RELEVANT AUTHORITIES



NOTE:  
AREA OF PLATFORM FURNITURE IS  
NOT MORE THAN 5.0 SQM.



N  
KEY PLAN  
NOT TO SCALE

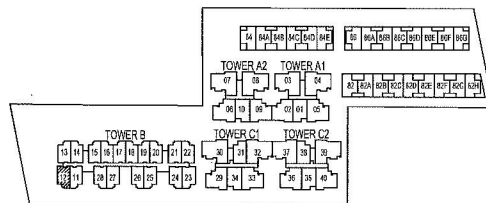
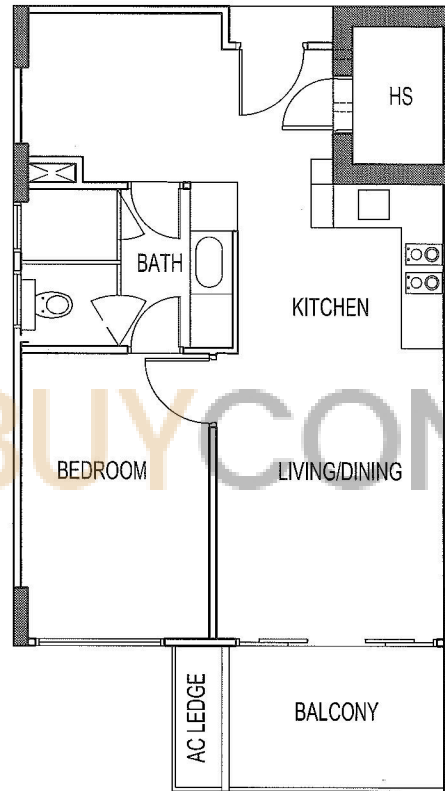


BP NO: A1136-00001-2008-BP01 DATED 24 OCT 2011  
A1136-00001-2008-BP02 DATED 13 SEP 2013  
A1136-00001-2008-BP04 DATED 29 DEC 2014  
A1136-00001-2008-BP05 DATED 19 MAY 2015

THE SEAWIND

Type - SA4(b)

BELOW PLAN IS SUBJECT TO CHANGE AS MAY  
BE APPROVED BY THE RELEVANT AUTHORITIES



 KEY PLAN  
NOT TO SCALE



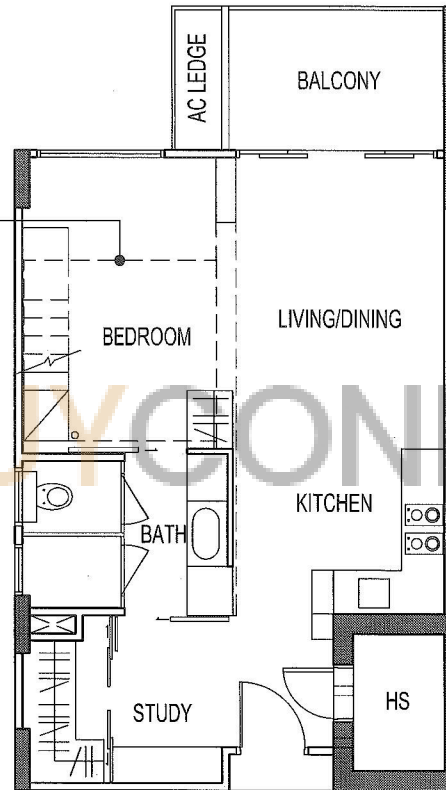
BP NO: A1136-00001-2008-BP01 DATED 24 OCT 2011  
A1136-00001-2008-BP02 DATED 13 SEP 2013  
A1136-00001-2008-BP04 DATED 29 DEC 2014  
A1136-00001-2008-BP05 DATED 19 MAY 2015

THE SEAWIND

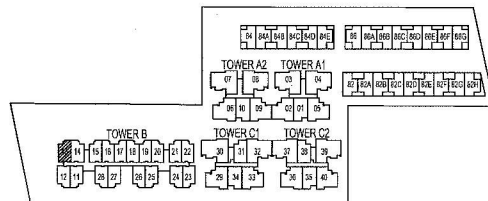
Type - SA4(b)

BELOW PLAN IS SUBJECT TO CHANGE AS MAY  
BE APPROVED BY THE RELEVANT AUTHORITIES

PLATFORM FURNITURE ABOVE  
(SEE NOTE)



NOTE:  
AREA OF PLATFORM FURNITURE IS  
NOT MORE THAN 5.0 SQM.



KEY PLAN  
NOT TO SCALE

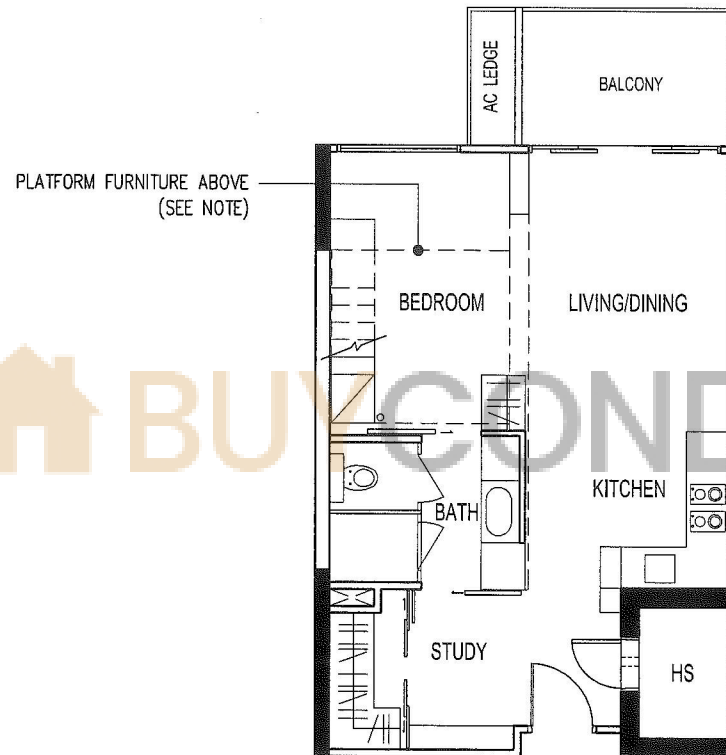


BP NO: A1136-00001-2008-BP01 DATED 24 OCT 2011  
 A1136-00001-2008-BP02 DATED 13 SEP 2013  
 A1136-00001-2008-BP04 DATED 29 DEC 2014  
 A1136-00001-2008-BP05 DATED 19 MAY 2015

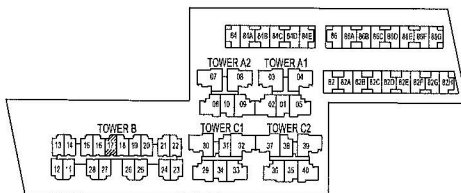
THE SEAWIND

Type - SA1(b)

BELOW PLAN IS SUBJECT TO CHANGE AS MAY  
BE APPROVED BY THE RELEVANT AUTHORITIES



NOTE:  
AREA OF PLATFORM FURNITURE IS  
NOT MORE THAN 5.0 SQM.



KEY PLAN  
NOT TO SCALE



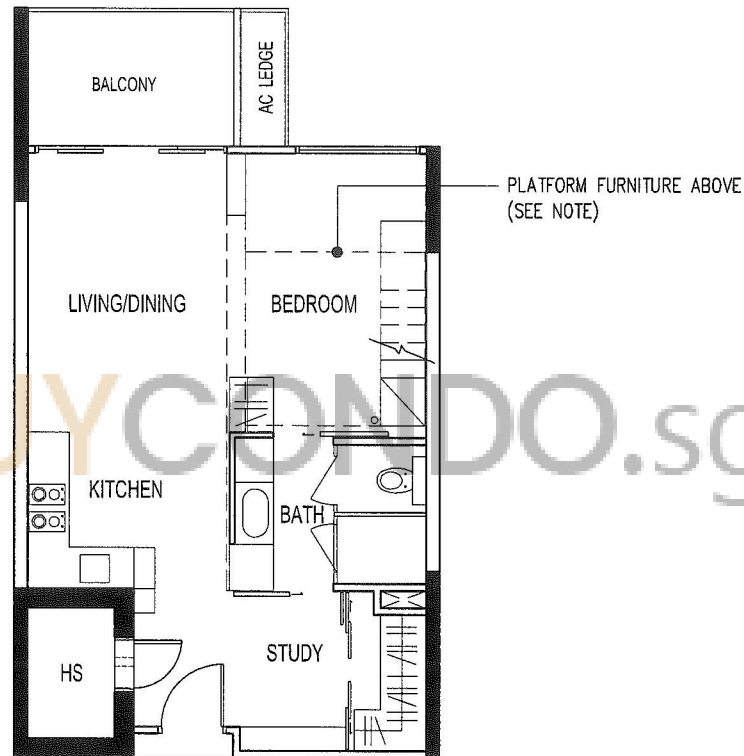
BP NO: A1136-00001-2008-BP01 DATED 24 OCT 2011  
A1136-00001-2008-BP02 DATED 13 SEP 2013  
A1136-00001-2008-BP04 DATED 29 DEC 2014  
A1136-00001-2008-BP05 DATED 19 MAY 2015



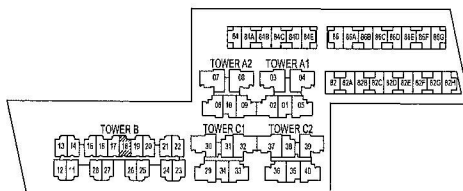
THE SEAWIND


Type - SA1(b)

BELOW PLAN IS SUBJECT TO CHANGE AS MAY  
BE APPROVED BY THE RELEVANT AUTHORITIES



NOTE:  
AREA OF PLATFORM FURNITURE IS  
NOT MORE THAN 5.0 SQM.



 KEY PLAN  
NOT TO SCALE

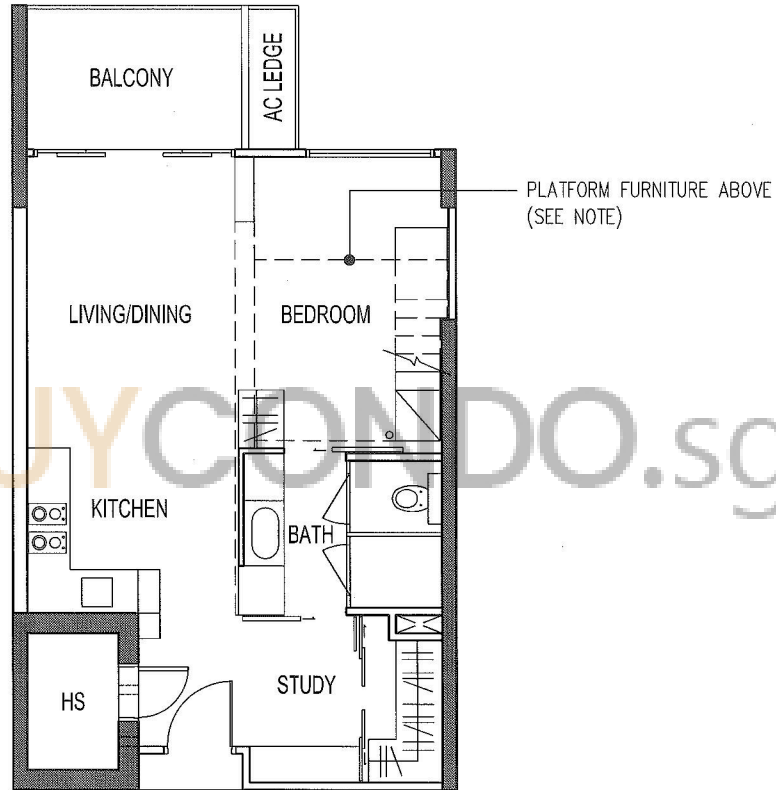


BP NO: A1136-00001-2008-BP01 DATED 24 OCT 2011  
 A1136-00001-2008-BP02 DATED 13 SEP 2013  
 A1136-00001-2008-BP04 DATED 29 DEC 2014  
 A1136-00001-2008-BP05 DATED 19 MAY 2015

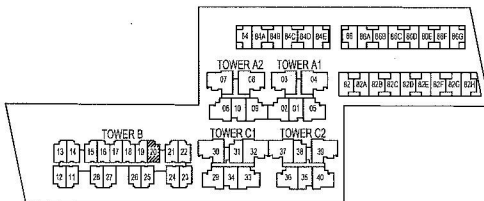
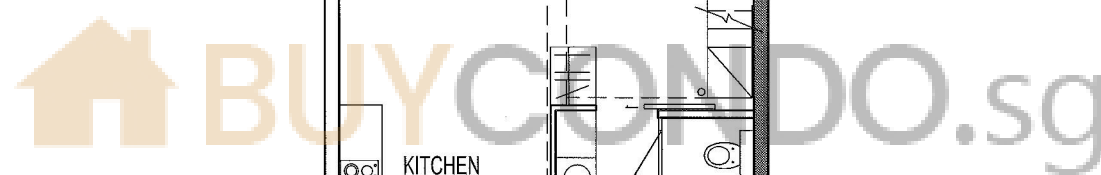
THE SEAWIND

Type - SA2(b)

BELOW PLAN IS SUBJECT TO CHANGE AS MAY  
BE APPROVED BY THE RELEVANT AUTHORITIES



NOTE:  
AREA OF PLATFORM FURNITURE IS  
NOT MORE THAN 5.0 SQM.



KEY PLAN  
NOT TO SCALE

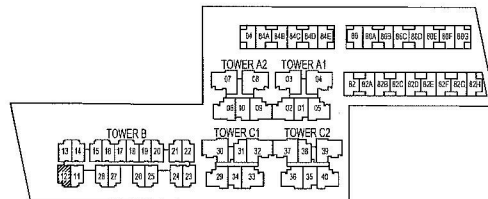
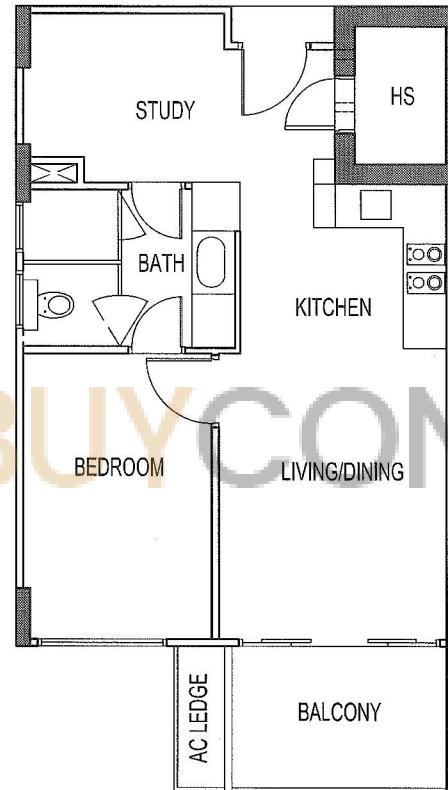


BP NO: A1136-00001-2008-BP01 DATED 24 OCT 2011  
 A1136-00001-2008-BP02 DATED 13 SEP 2013  
 A1136-00001-2008-BP04 DATED 29 DEC 2014  
 A1136-00001-2008-BP05 DATED 19 MAY 2015

THE SEAWIND

Type - SA4(b)

BELOW PLAN IS SUBJECT TO CHANGE AS MAY  
BE APPROVED BY THE RELEVANT AUTHORITIES



KEY PLAN  
NOT TO SCALE

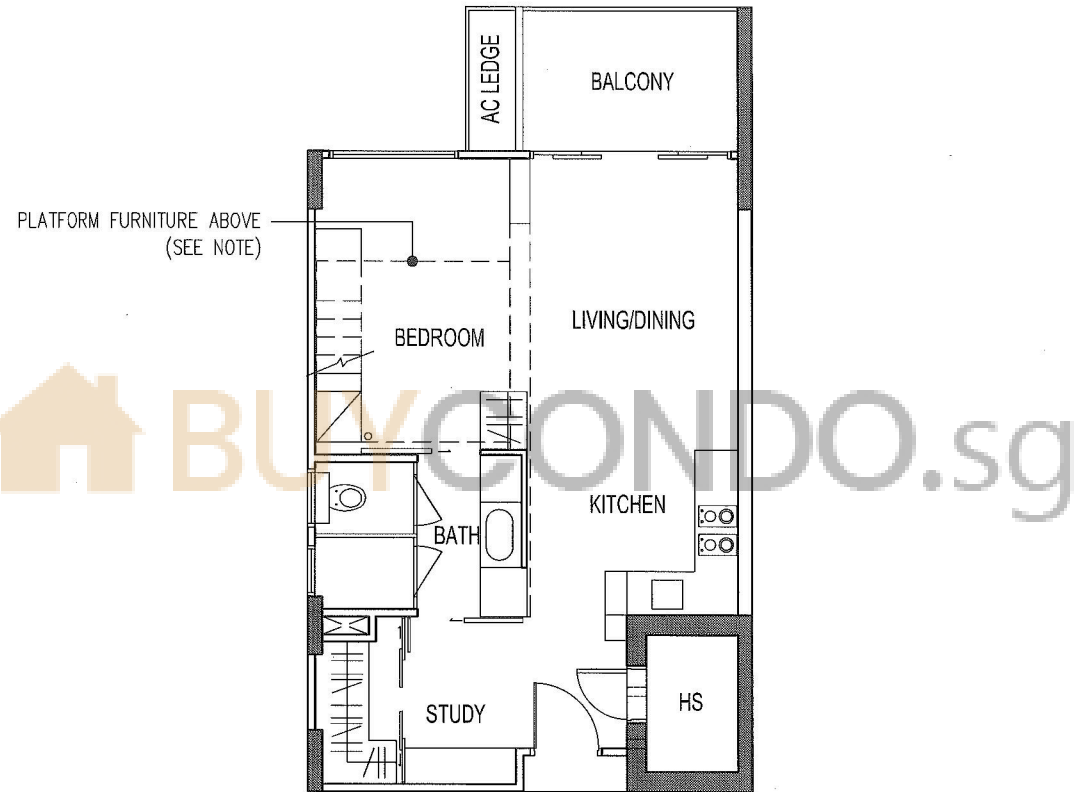


BP NO: A1136-00001-2008-BP01 DATED 24 OCT 2011  
 A1136-00001-2008-BP02 DATED 13 SEP 2013  
 A1136-00001-2008-BP04 DATED 29 DEC 2014  
 A1136-00001-2008-BP05 DATED 19 MAY 2015

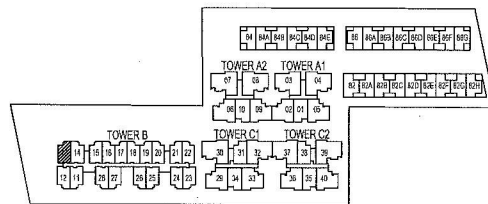
THE SEAWIND

Type - SA4(b)

BELOW PLAN IS SUBJECT TO CHANGE AS MAY  
BE APPROVED BY THE RELEVANT AUTHORITIES



NOTE:  
AREA OF PLATFORM FURNITURE IS  
NOT MORE THAN 5.0 SQM.



KEY PLAN  
NOT TO SCALE

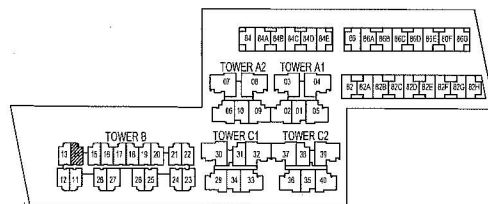
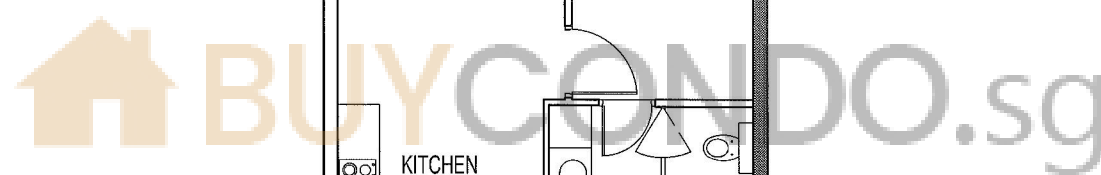
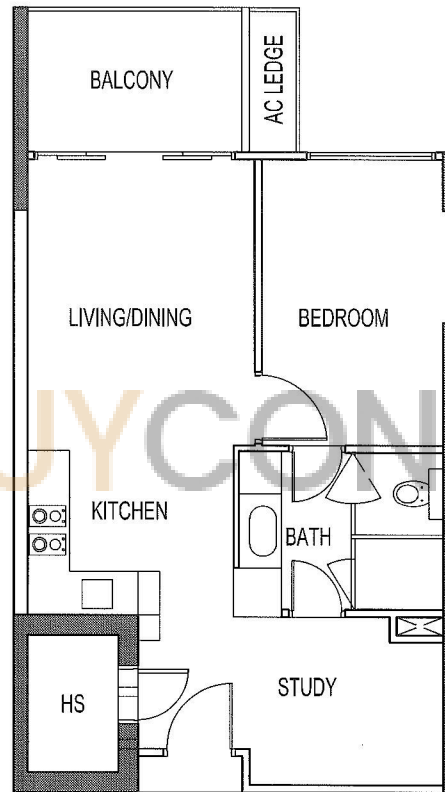


BP NO: A1136-00001-2008-BP01 DATED 24 OCT 2011  
A1136-00001-2008-BP02 DATED 13 SEP 2013  
A1136-00001-2008-BP04 DATED 29 DEC 2014  
A1136-00001-2008-BP05 DATED 19 MAY 2015

THE SEAWIND

Type - SA2(b)

BELOW PLAN IS SUBJECT TO CHANGE AS MAY  
BE APPROVED BY THE RELEVANT AUTHORITIES



N  
KEY PLAN  
NOT TO SCALE

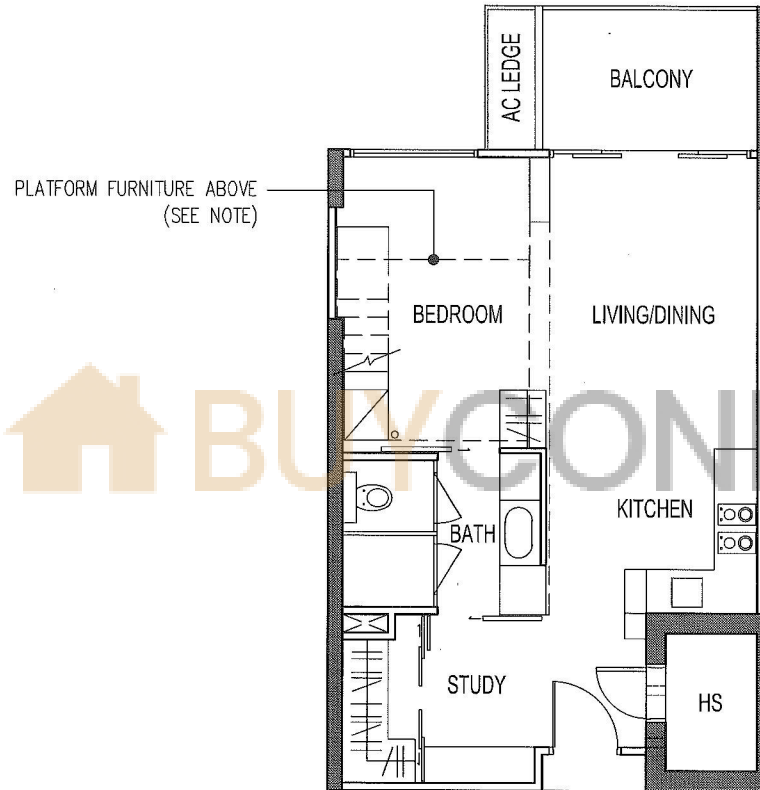


- BP NO: A1136-00001-2008-BP01 DATED 24 OCT 2011
- A1136-00001-2008-BP02 DATED 13 SEP 2013
- A1136-00001-2008-BP04 DATED 29 DEC 2014
- A1136-00001-2008-BP05 DATED 19 MAY 2015

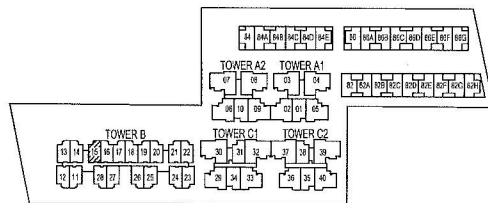
THE SEAWIND

Type - SA2(b)

BELOW PLAN IS SUBJECT TO CHANGE AS MAY  
BE APPROVED BY THE RELEVANT AUTHORITIES



NOTE:  
AREA OF PLATFORM FURNITURE IS  
NOT MORE THAN 5.0 SQM.



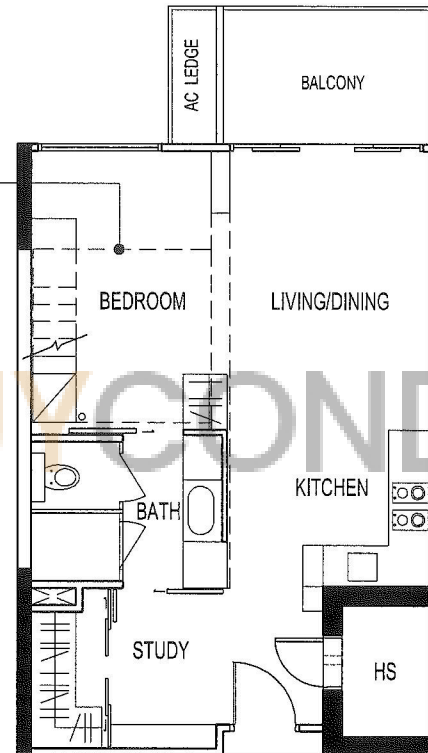
- BP NO: A1136-00001-2008-BP01 DATED 24 OCT 2011
- A1136-00001-2008-BP02 DATED 13 SEP 2013
- A1136-00001-2008-BP04 DATED 29 DEC 2014
- A1136-00001-2008-BP05 DATED 19 MAY 2015

THE SEAWIND

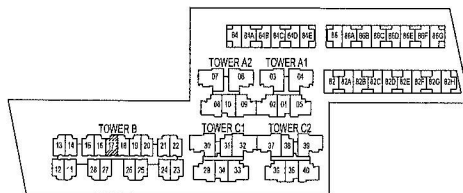
Type - SA1(b)

BELOW PLAN IS SUBJECT TO CHANGE AS MAY  
BE APPROVED BY THE RELEVANT AUTHORITIES

PLATFORM FURNITURE ABOVE  
(SEE NOTE)



NOTE:  
AREA OF PLATFORM FURNITURE IS  
NOT MORE THAN 5.0 SQM.



KEY PLAN  
NOT TO SCALE

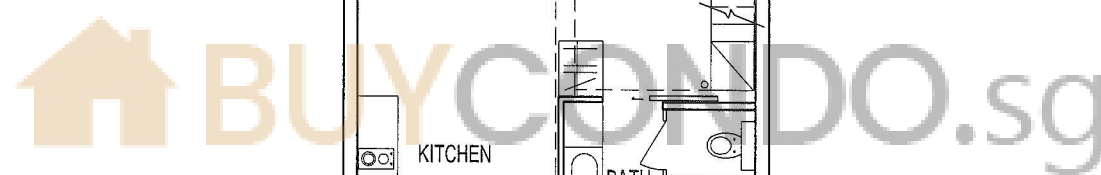
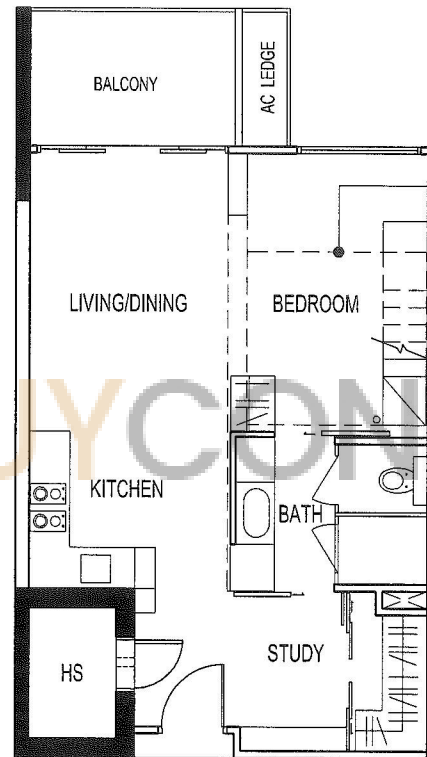


- BP NO: A1136-00001-2008-BP01 DATED 24 OCT 2011
- A1136-00001-2008-BP02 DATED 13 SEP 2013
- A1136-00001-2008-BP04 DATED 29 DEC 2014
- A1136-00001-2008-BP05 DATED 19 MAY 2015

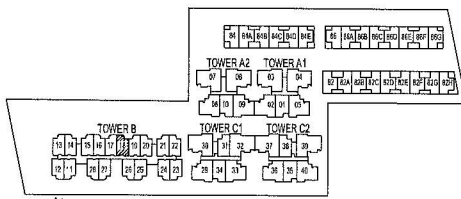
THE SEAWIND

Type - SA1(b)

BELOW PLAN IS SUBJECT TO CHANGE AS MAY  
BE APPROVED BY THE RELEVANT AUTHORITIES



NOTE:  
AREA OF PLATFORM FURNITURE IS  
NOT MORE THAN 5.0 SQM.



KEY PLAN  
NOT TO SCALE



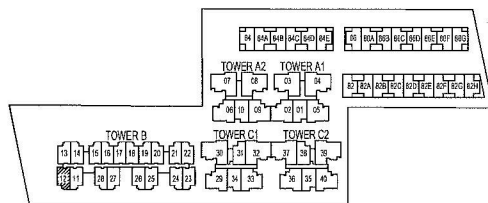
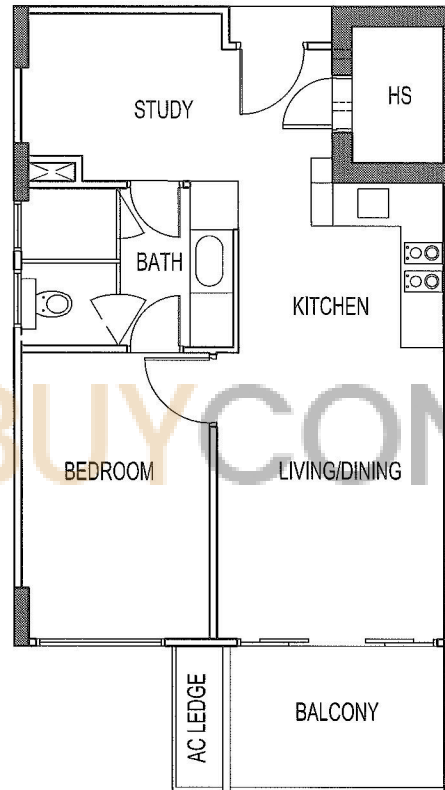
- BP NO: A1136-00001-2008-BP01 DATED 24 OCT 2011
- A1136-00001-2008-BP02 DATED 13 SEP 2013
- A1136-00001-2008-BP04 DATED 29 DEC 2014
- A1136-00001-2008-BP05 DATED 19 MAY 2015



THE SEAWIND

Type - SA4(b)

BELOW PLAN IS SUBJECT TO CHANGE AS MAY  
BE APPROVED BY THE RELEVANT AUTHORITIES



KEY PLAN  
NOT TO SCALE

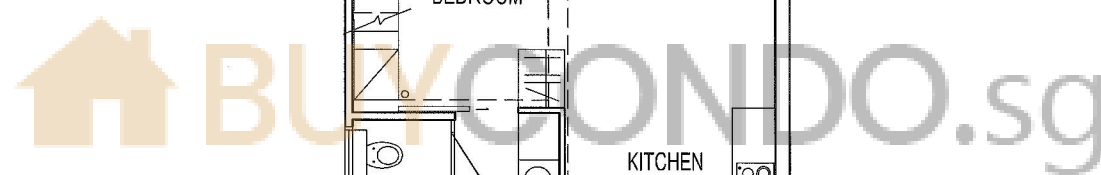
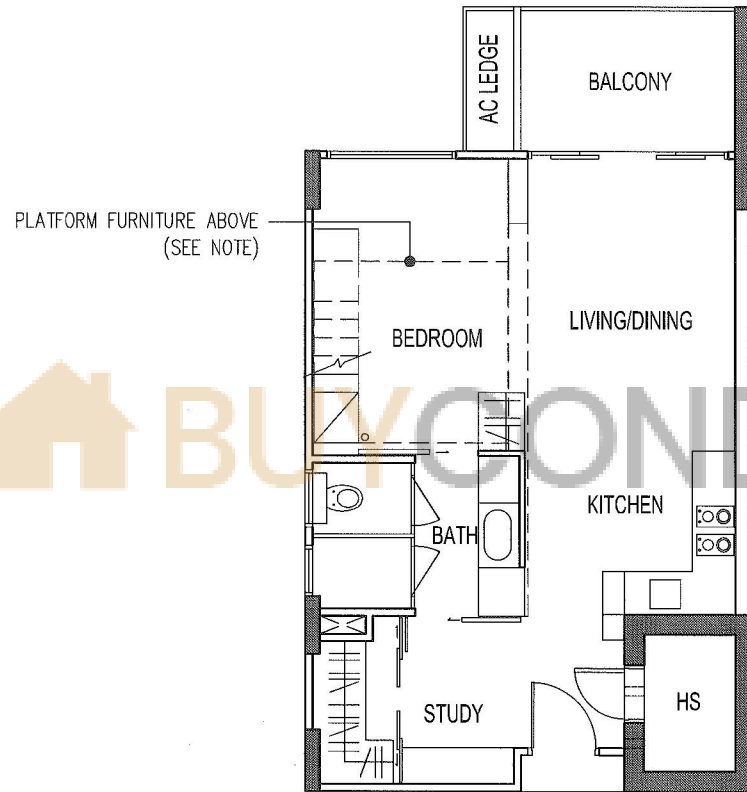


BP NO: A1136-00001-2008-BP01 DATED 24 OCT 2011  
A1136-00001-2008-BP02 DATED 13 SEP 2013  
A1136-00001-2008-BP04 DATED 29 DEC 2014  
A1136-00001-2008-BP05 DATED 19 MAY 2015

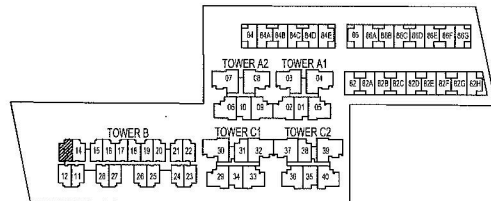
THE SEAWIND

Type - SA4(b)

BELOW PLAN IS SUBJECT TO CHANGE AS MAY  
BE APPROVED BY THE RELEVANT AUTHORITIES



NOTE:  
AREA OF PLATFORM FURNITURE IS  
NOT MORE THAN 5.0 SQM.



KEY PLAN  
NOT TO SCALE



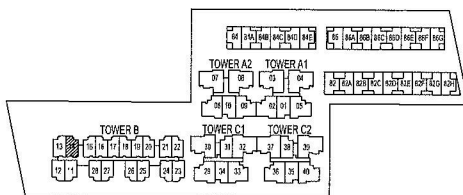
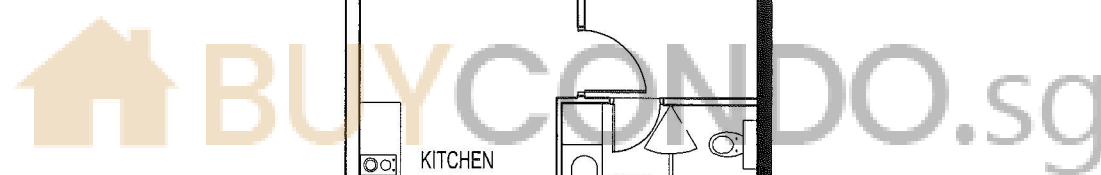
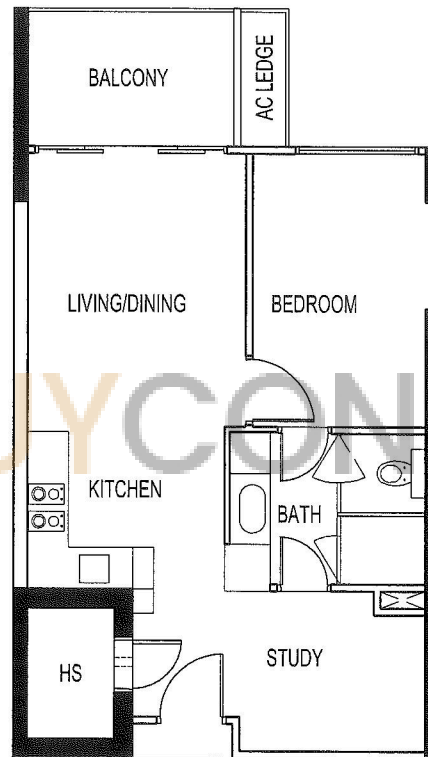
- BP NO: A1136-00001-2008-BP01 DATED 24 OCT 2011
- A1136-00001-2008-BP02 DATED 13 SEP 2013
- A1136-00001-2008-BP04 DATED 29 DEC 2014
- A1136-00001-2008-BP05 DATED 19 MAY 2015

THE SEAWIND

UNIT # 05-14  
76 LORONG M TELOK KURAU

Type - SA2(b)

BELOW PLAN IS SUBJECT TO CHANGE AS MAY  
BE APPROVED BY THE RELEVANT AUTHORITIES



N  
KEY PLAN  
NOT TO SCALE

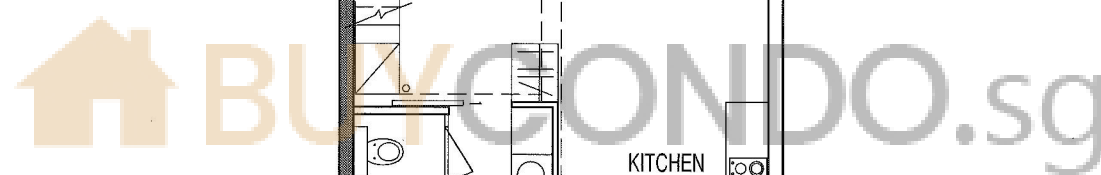
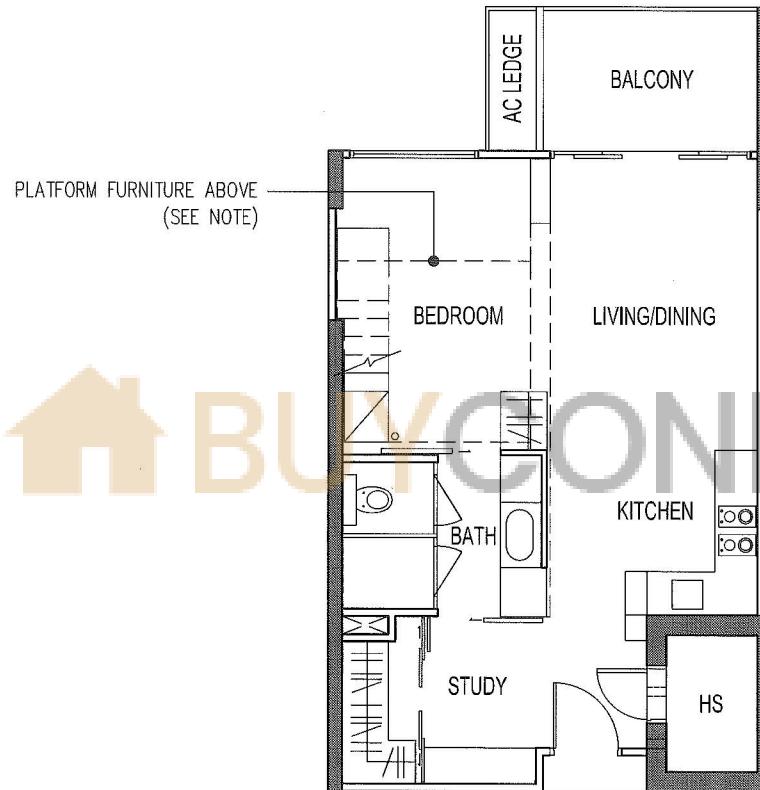


- BP NO: A1136-00001-2008-BP01 DATED 24 OCT 2011
- A1136-00001-2008-BP02 DATED 13 SEP 2013
- A1136-00001-2008-BP04 DATED 29 DEC 2014
- A1136-00001-2008-BP05 DATED 19 MAY 2015

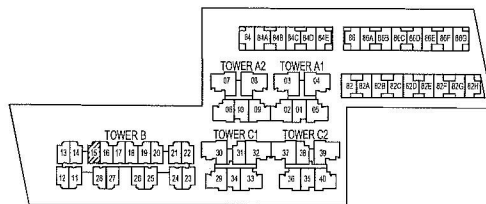
THE SEAWIND

Type - SA2(b)

BELOW PLAN IS SUBJECT TO CHANGE AS MAY  
BE APPROVED BY THE RELEVANT AUTHORITIES



NOTE:  
AREA OF PLATFORM FURNITURE IS  
NOT MORE THAN 5.0 SQM.



N  
KEY PLAN  
NOT TO SCALE

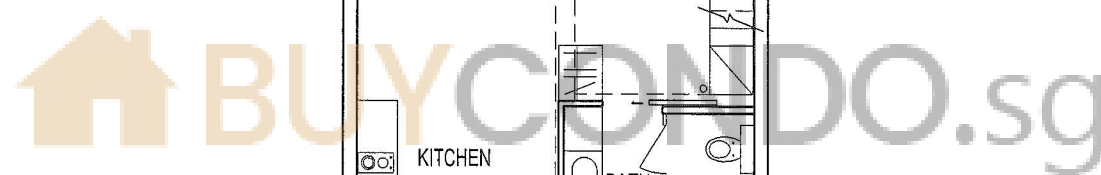
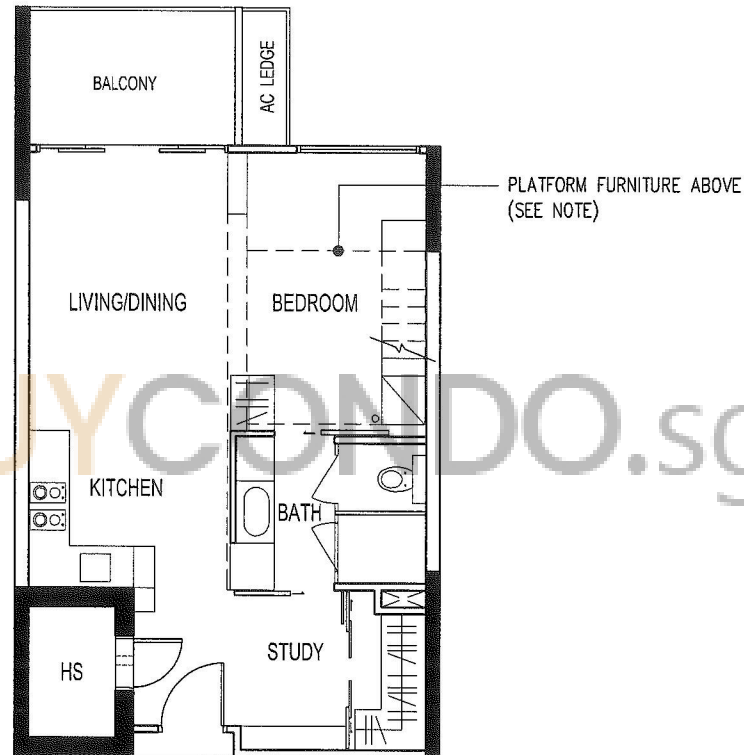


BP NO: A1136-00001-2008-BP01 DATED 24 OCT 2011  
A1136-00001-2008-BP02 DATED 13 SEP 2013  
A1136-00001-2008-BP04 DATED 29 DEC 2014  
A1136-00001-2008-BP05 DATED 19 MAY 2015

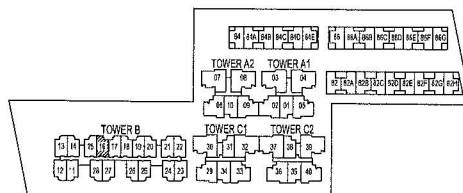
THE SEAWIND

Type - SA1(b)

BELOW PLAN IS SUBJECT TO CHANGE AS MAY  
BE APPROVED BY THE RELEVANT AUTHORITIES



NOTE:  
AREA OF PLATFORM FURNITURE IS  
NOT MORE THAN 5.0 SQM.



KEY PLAN  
NOT TO SCALE

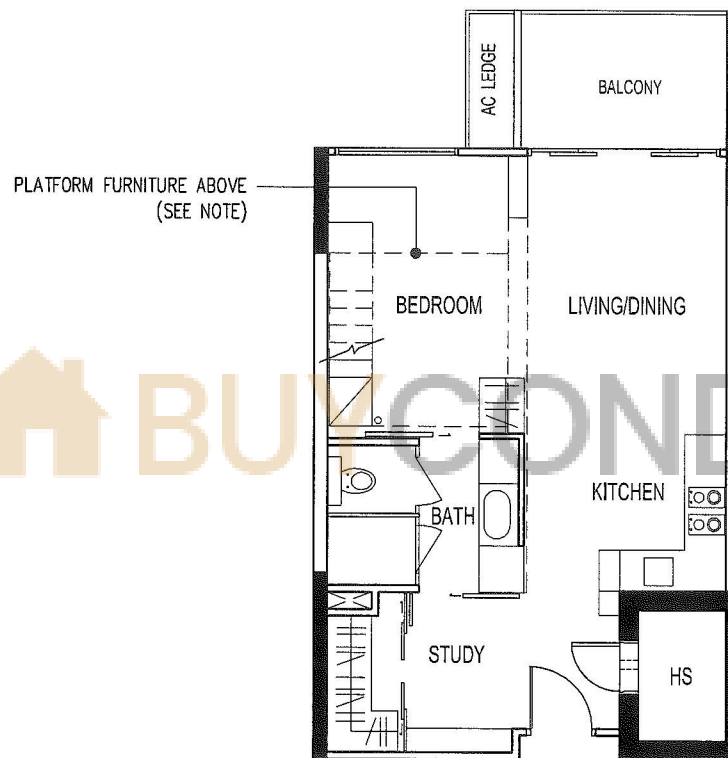


BP NO: A1136-00001-2008-BP01 DATED 24 OCT 2011  
 A1136-00001-2008-BP02 DATED 13 SEP 2013  
 A1136-00001-2008-BP04 DATED 29 DEC 2014  
 A1136-00001-2008-BP05 DATED 19 MAY 2015

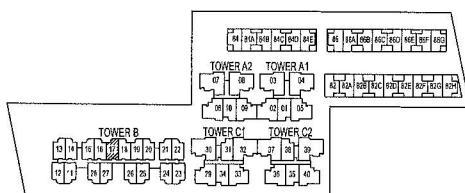
# THE SEAWIND

Type - SA1(b)

BELOW PLAN IS SUBJECT TO CHANGE AS MAY  
BE APPROVED BY THE RELEVANT AUTHORITIES



NOTE:  
AREA OF PLATFORM FURNITURE IS  
NOT MORE THAN 5.0 SQM.



 KEY PLAN  
NOT TO SCALE

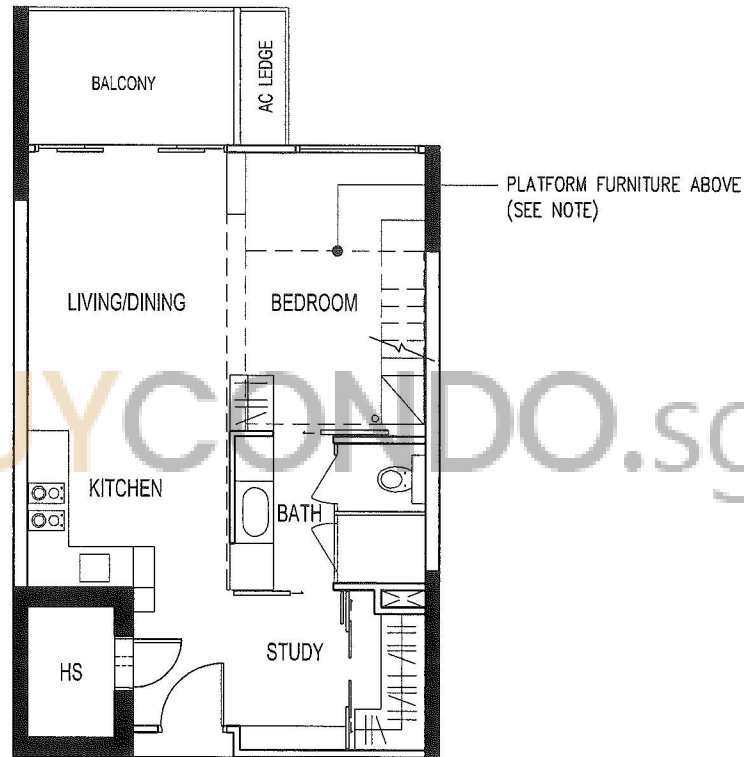


BP NO: A1136-00001-2008-BP01 DATED 24 OCT 2011  
A1136-00001-2008-BP02 DATED 13 SEP 2013  
A1136-00001-2008-BP04 DATED 29 DEC 2014  
A1136-00001-2008-BP05 DATED 19 MAY 2015

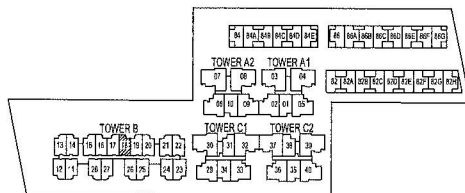
THE SEAWIND

Type - SA1(b)

BELOW PLAN IS SUBJECT TO CHANGE AS MAY  
BE APPROVED BY THE RELEVANT AUTHORITIES



NOTE:  
AREA OF PLATFORM FURNITURE IS  
NOT MORE THAN 5.0 SQM.



KEY PLAN  
NOT TO SCALE

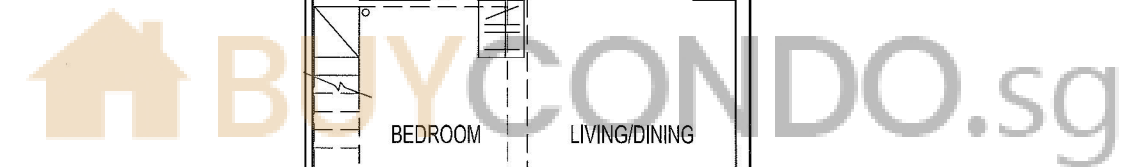


- BP NO: A1136-00001-2008-BP01 DATED 24 OCT 2011
- A1136-00001-2008-BP02 DATED 13 SEP 2013
- A1136-00001-2008-BP04 DATED 29 DEC 2014
- A1136-00001-2008-BP05 DATED 19 MAY 2015

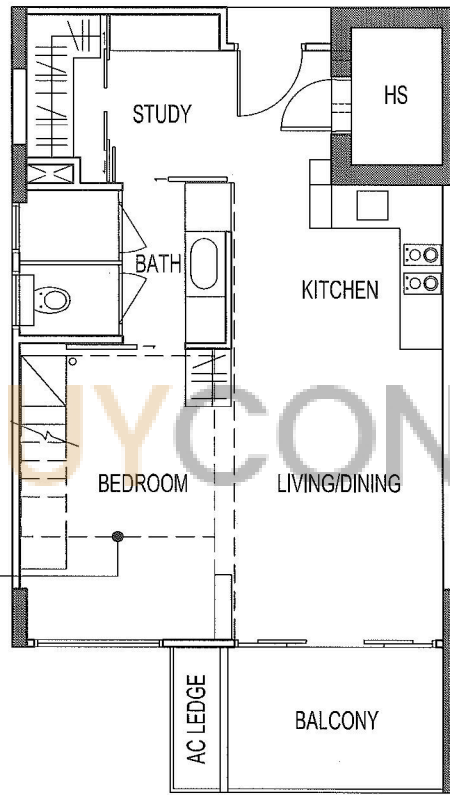
THE SEAWIND

Type - SA3(b)

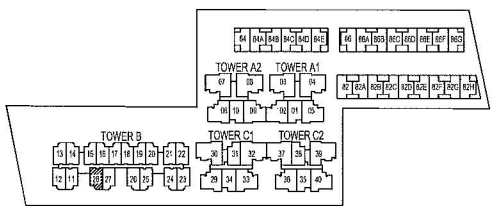
BELOW PLAN IS SUBJECT TO CHANGE AS MAY  
BE APPROVED BY THE RELEVANT AUTHORITIES



PLATFORM FURNITURE ABOVE  
(SEE NOTE)



NOTE:  
AREA OF PLATFORM FURNITURE IS  
NOT MORE THAN 5.0 SQM.



N  
KEY PLAN  
NOT TO SCALE



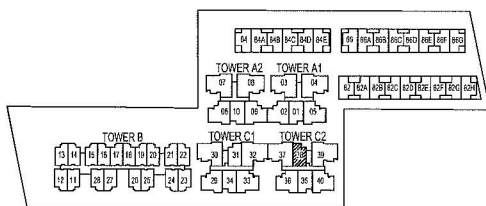
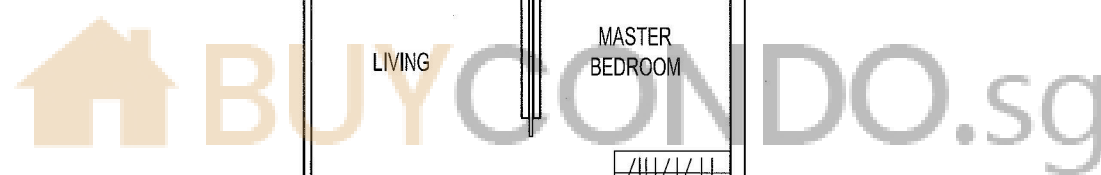
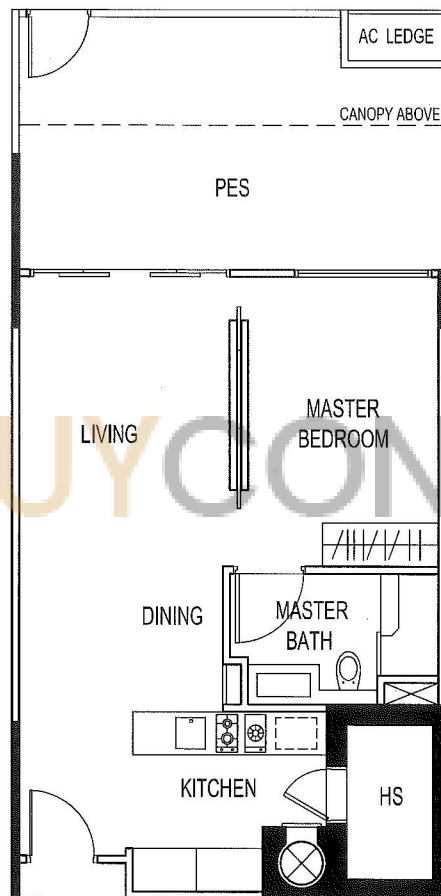
- BP NO: A1136-00001-2008-BP01 DATED 24 OCT 2011
- A1136-00001-2008-BP02 DATED 13 SEP 2013
- A1136-00001-2008-BP04 DATED 29 DEC 2014
- A1136-00001-2008-BP05 DATED 19 MAY 2015



THE SEAWIND

Type - A1(p)

BELOW PLAN IS SUBJECT TO CHANGE AS MAY  
BE APPROVED BY THE RELEVANT AUTHORITIES



N  
KEY PLAN  
NOT TO SCALE



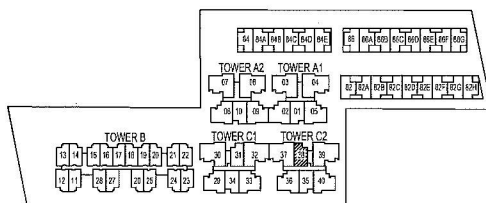
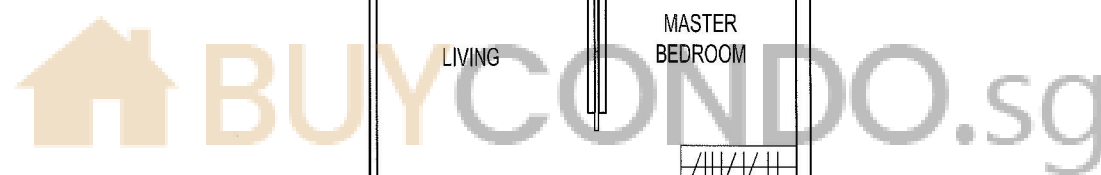
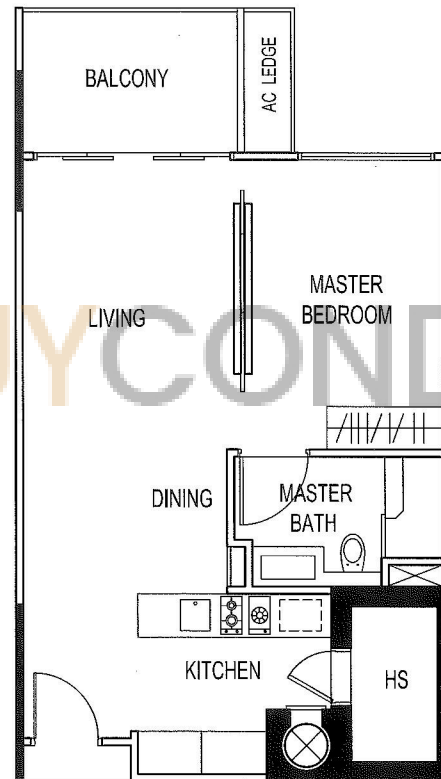
BP NO: A1136-00001-2008-BP01 DATED 24 OCT 2011  
A1136-00001-2008-BP02 DATED 13 SEP 2013  
A1136-00001-2008-BP04 DATED 29 DEC 2014  
A1136-00001-2008-BP05 DATED 19 MAY 2015

THE SEAWIND

UNIT # 02-38  
80 LORONG M TELOK KURAU

Type - A1(b)

BELOW PLAN IS SUBJECT TO CHANGE AS MAY  
BE APPROVED BY THE RELEVANT AUTHORITIES



KEY PLAN  
NOT TO SCALE



BP NO: A1136-00001-2008-BP01 DATED 24 OCT 2011  
A1136-00001-2008-BP02 DATED 13 SEP 2013  
A1136-00001-2008-BP04 DATED 29 DEC 2014  
A1136-00001-2008-BP05 DATED 19 MAY 2015

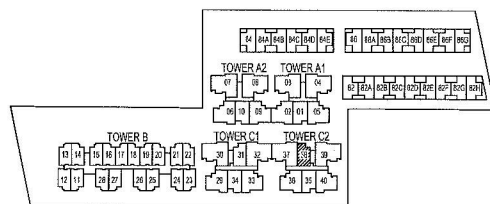
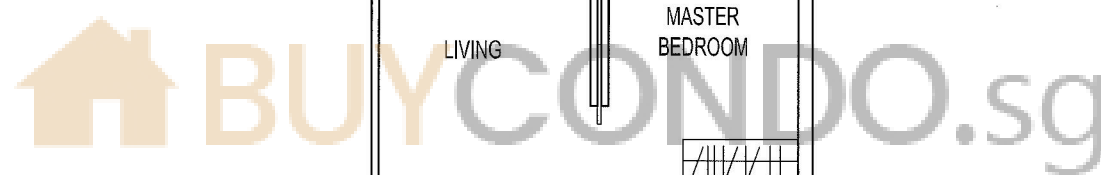
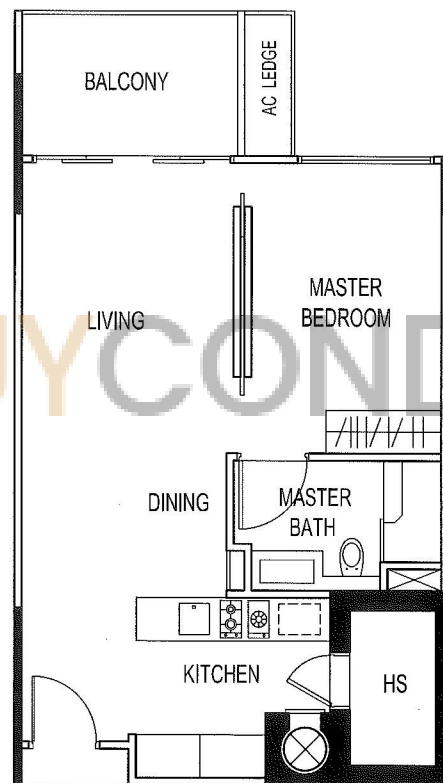
THE SEAWIND

UNIT # 03-38

80 LORONG M TELOK KURAU

Type - A1(b)

BELOW PLAN IS SUBJECT TO CHANGE AS MAY  
BE APPROVED BY THE RELEVANT AUTHORITIES



N  
KEY PLAN  
NOT TO SCALE



- BP NO: A1136-00001-2008-BP01 DATED 24 OCT 2011
- A1136-00001-2008-BP02 DATED 13 SEP 2013
- A1136-00001-2008-BP04 DATED 29 DEC 2014
- A1136-00001-2008-BP05 DATED 19 MAY 2015

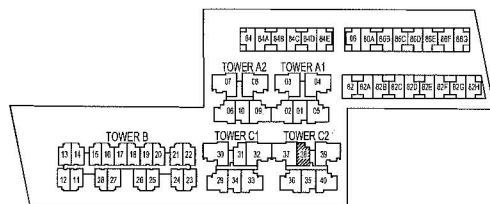
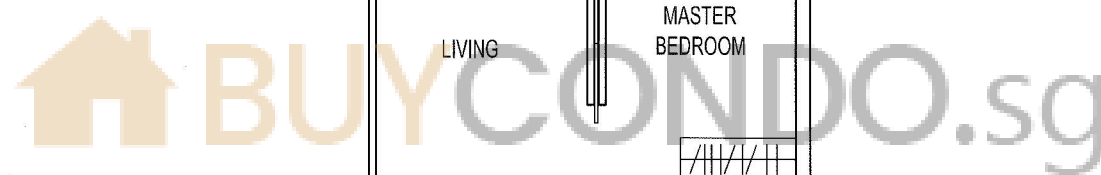
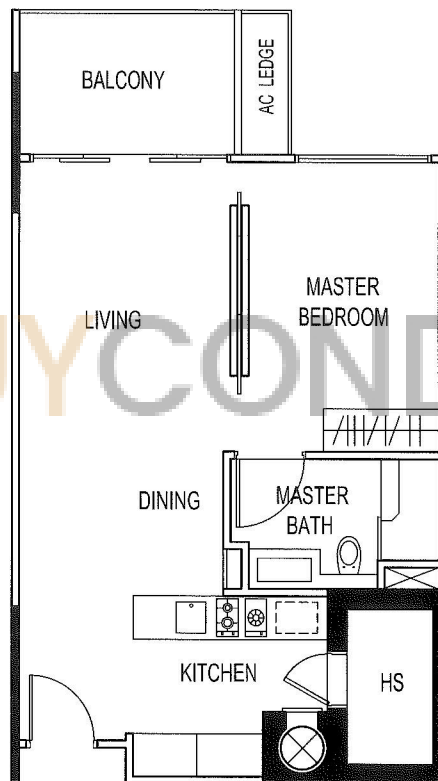
THE SEAWIND

UNIT # 04-38

80 LORONG M TELOK KURAU

Type - A1(b)

BELOW PLAN IS SUBJECT TO CHANGE AS MAY  
BE APPROVED BY THE RELEVANT AUTHORITIES



N  
KEY PLAN  
NOT TO SCALE



BP NO: A1136-00001-2008-BP01 DATED 24 OCT 2011  
A1136-00001-2008-BP02 DATED 13 SEP 2013  
A1136-00001-2008-BP04 DATED 29 DEC 2014  
A1136-00001-2008-BP05 DATED 19 MAY 2015

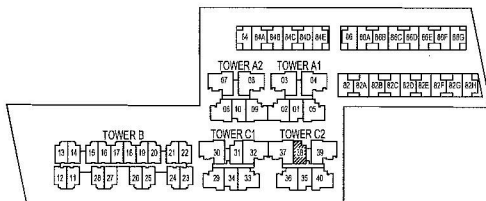
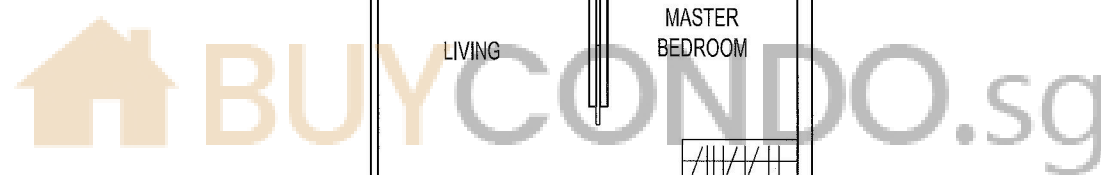
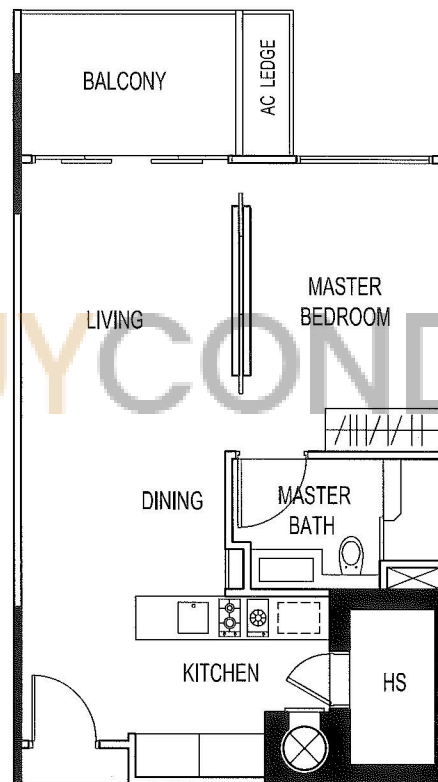
THE SEAWIND

UNIT # 05-38

80 LORONG M TELOK KURAU

Type - A1(b)

BELOW PLAN IS SUBJECT TO CHANGE AS MAY  
BE APPROVED BY THE RELEVANT AUTHORITIES



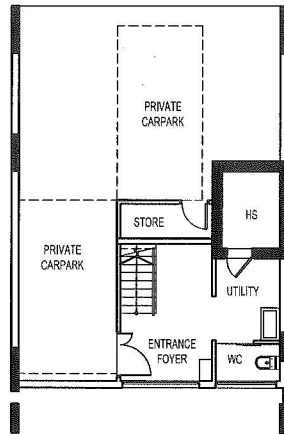
KEY PLAN  
NOT TO SCALE



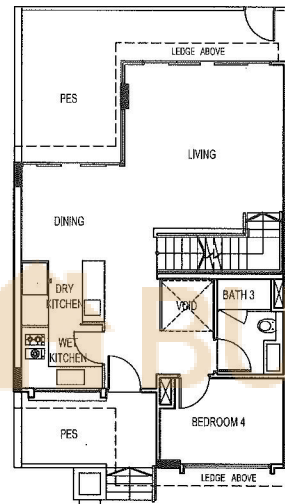
- BP NO: A1136-00001-2008-BP01 DATED 24 OCT 2011
- A1136-00001-2008-BP02 DATED 13 SEP 2013
- A1136-00001-2008-BP04 DATED 29 DEC 2014
- A1136-00001-2008-BP05 DATED 19 MAY 2015

THE SEAWIND  
Type - T1

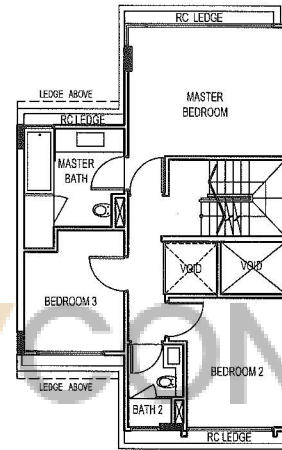
BELOW PLAN IS SUBJECT TO CHANGE AS MAY BE APPROVED BY THE RELEVANT AUTHORITIES



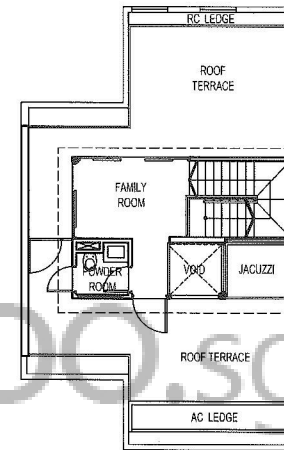
BASEMENT



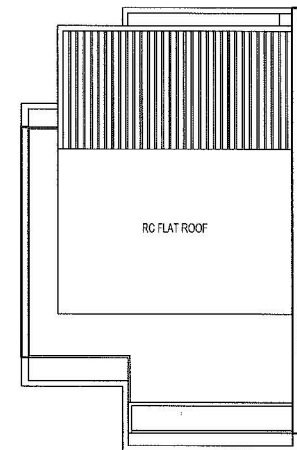
1ST STOREY



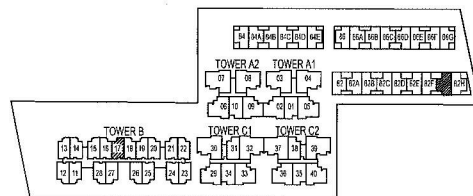
2ND STOREY



ROOF LEVEL



UPPER ROOF LEVEL



KEY PLAN  
NOT TO SCALE



BP NO: A1136-00001-2008-BP01 DATED 24 OCT 2011  
A1136-00001-2008-BP02 DATED 13 SEP 2013  
A1136-00001-2008-BP04 DATED 29 DEC 2014  
A1136-00001-2008-BP05 DATED 19 MAY 2015