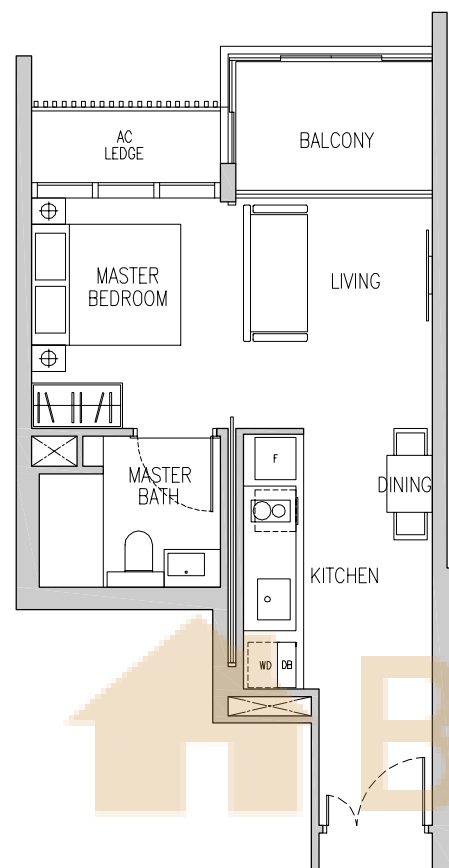


Type A1

46 sq m / 495 sq ft

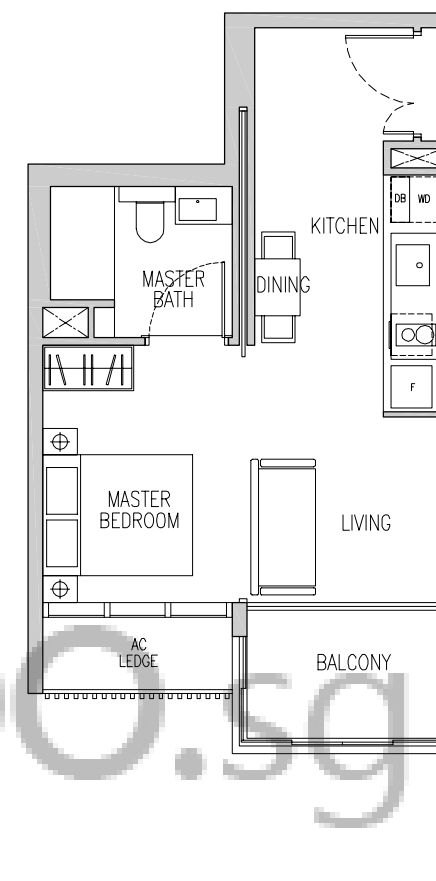
188 Holland Road
#02-05 to #05-05



Type A2

46 sq m / 495 sq ft

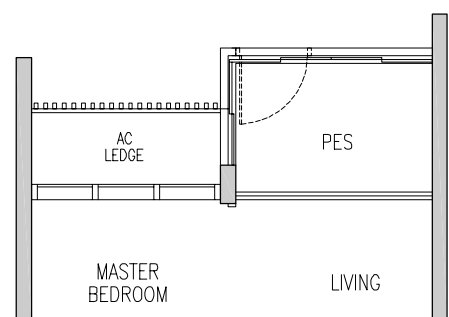
188 Holland Road
#02-10 to #05-10



Type A1p

46 sq m / 495 sq ft

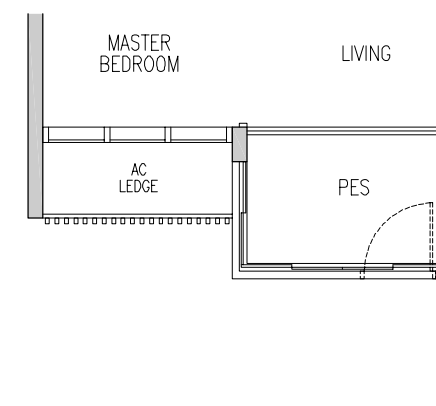
188 Holland Road
#01-05



Type A2p

46 sq m / 495 sq ft

188 Holland Road
#01-10



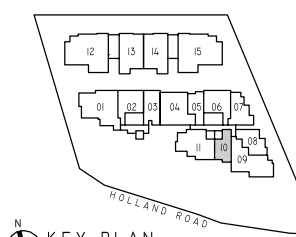
KEY PLAN
(PLAN IS NOT TO SCALE)



Area includes A/C ledge, balcony and PES. Orientations and facings will differ depending on the unit you are purchasing. Please refer to the key plan. The plans are subject to change as may be required or approved by relevant authorities. All areas are approximate and subject to final survey. The developer and its agents cannot be held liable for any inaccuracies.



Area includes A/C ledge, balcony and PES. Orientations and facings will differ depending on the unit you are purchasing. Please refer to the key plan. The plans are subject to change as may be required or approved by relevant authorities. All areas are approximate and subject to final survey. The developer and its agents cannot be held liable for any inaccuracies.

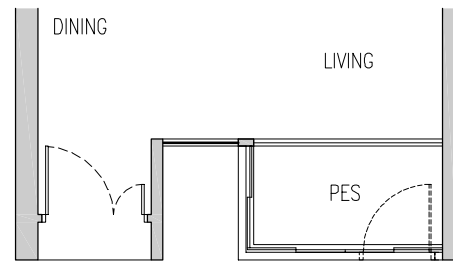
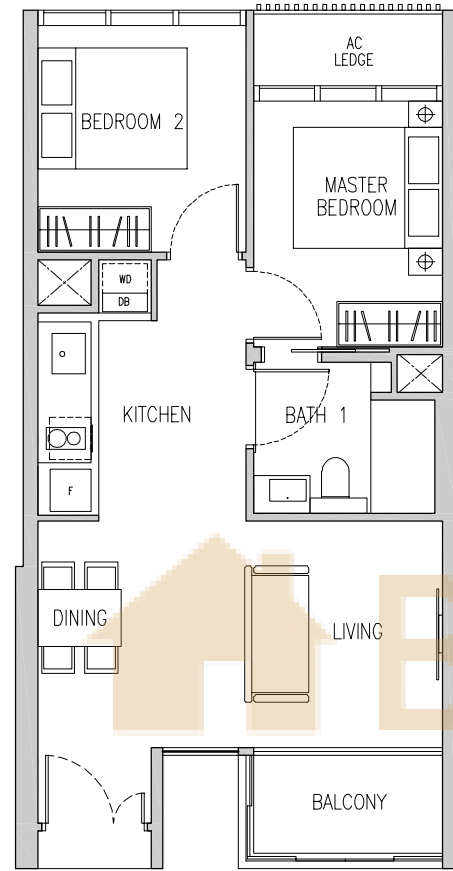


KEY PLAN
(PLAN IS NOT TO SCALE)

Type B1

61 sq m / 657 sq ft

186 Holland Road
#02-03 to #05-03

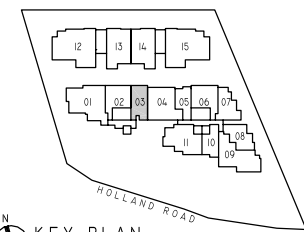


Area includes A/C ledge, balcony and PES. Orientations and facings will differ depending on the unit you are purchasing. Please refer to the key plan. The plans are subject to change as may be required or approved by relevant authorities. All areas are approximate and subject to final survey. The developer and its agents cannot be held liable for any inaccuracies.

Type B1p

61 sq m / 657 sq ft

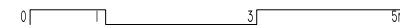
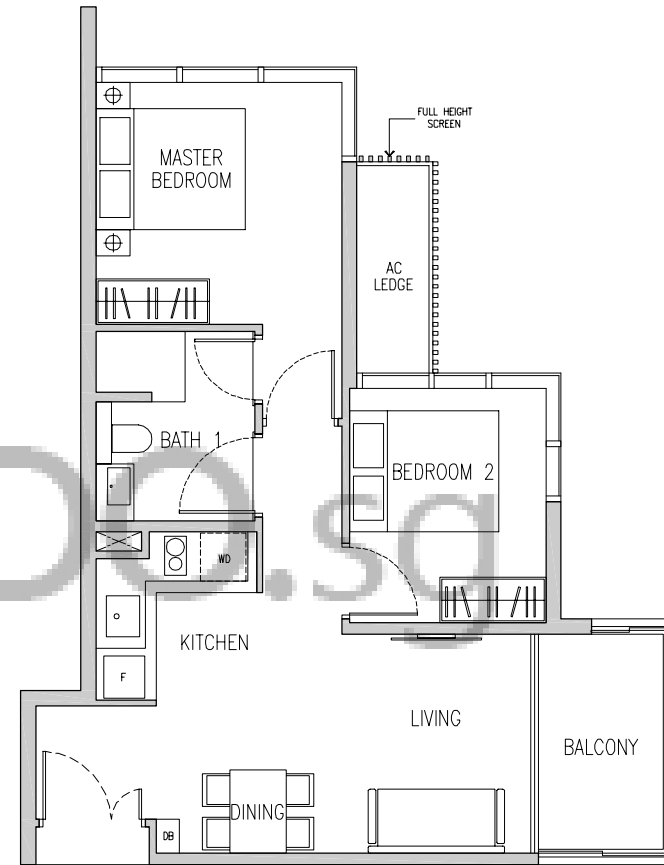
186 Holland Road
#01-03



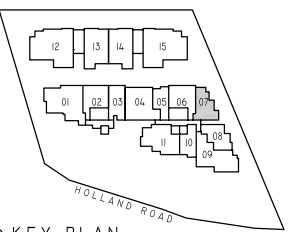
Type B2

64 sq m / 689 sq ft

188 Holland Road
#02-07 to #05-07



Area includes A/C ledge, balcony and PES. Orientations and facings will differ depending on the unit you are purchasing. Please refer to the key plan. The plans are subject to change as may be required or approved by relevant authorities. All areas are approximate and subject to final survey. The developer and its agents cannot be held liable for any inaccuracies.

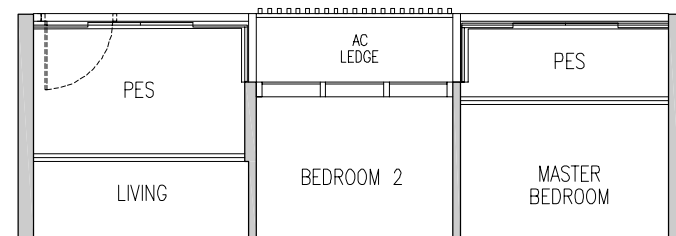
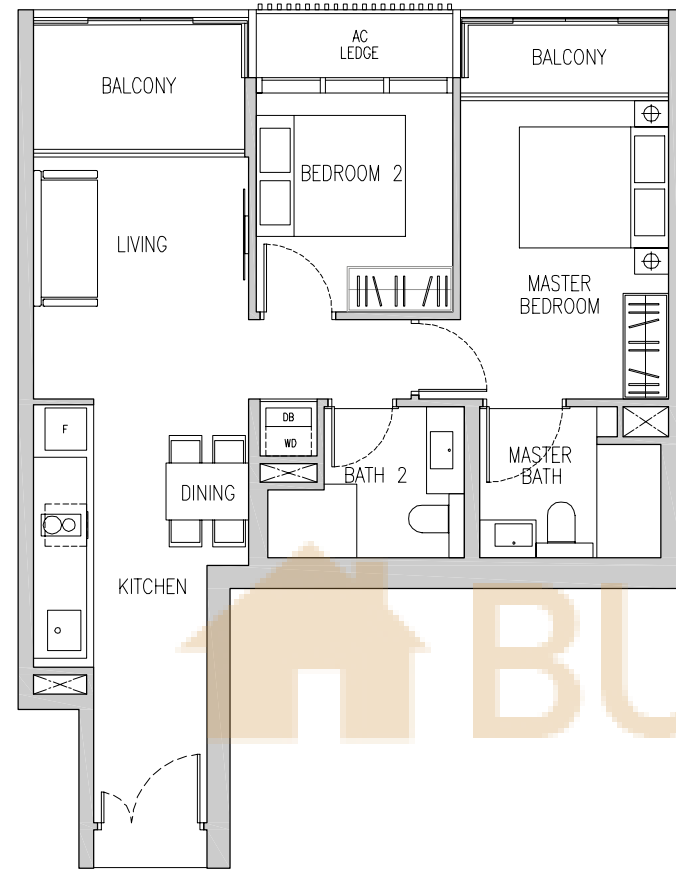


Type B3

72 sq m / 775 sq ft

186 Holland Road
#02-02 to #05-02

188 Holland Road
#02-06* to #05-06*

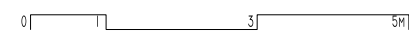


Type B3p

72 sq m / 775 sq ft

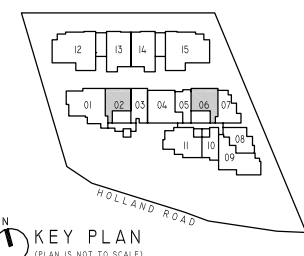
186 Holland Road
#01-02

188 Holland Road
#01-06*



*Denotes Mirrored Unit

Area includes A/C ledge, balcony and PES. Orientations and facings will differ depending on the unit you are purchasing. Please refer to the key plan. The plans are subject to change as may be required or approved by relevant authorities. All areas are approximate and subject to final survey. The developer and its agents cannot be held liable for any inaccuracies.

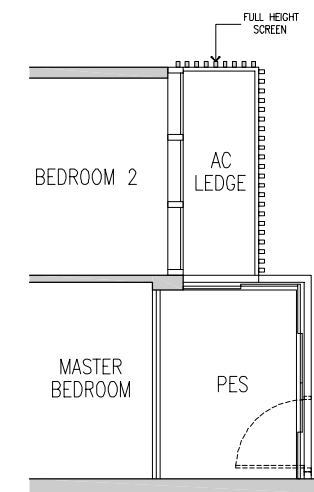
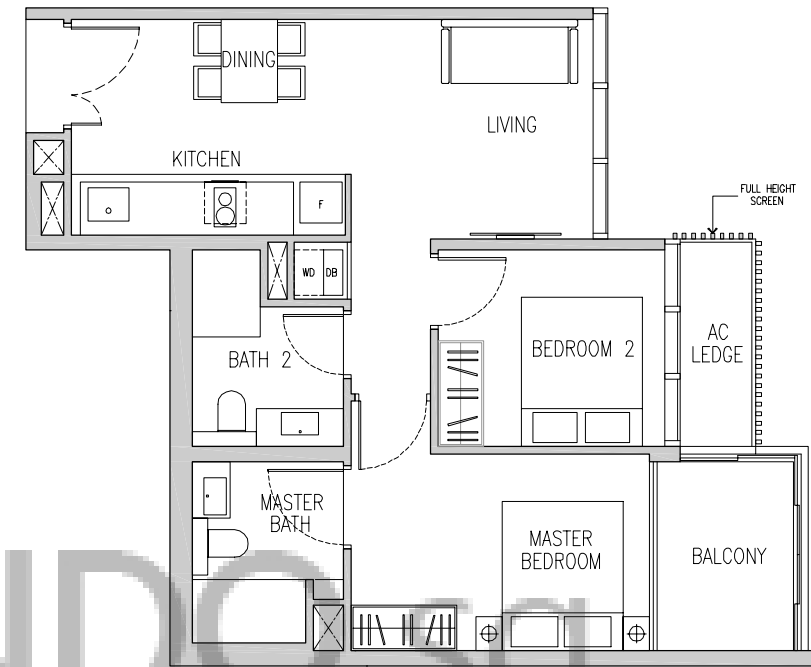


KEY PLAN
(PLAN IS NOT TO SCALE)

Type B4

66 sq m / 710 sq ft

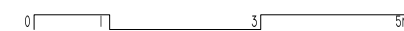
188 Holland Road
#02-08 to #05-08



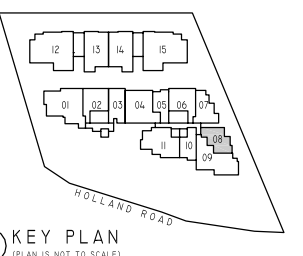
Type B4p

66 sq m / 710 sq ft

188 Holland Road
#01-08



Area includes A/C ledge, balcony and PES. Orientations and facings will differ depending on the unit you are purchasing. Please refer to the key plan. The plans are subject to change as may be required or approved by relevant authorities. All areas are approximate and subject to final survey. The developer and its agents cannot be held liable for any inaccuracies.

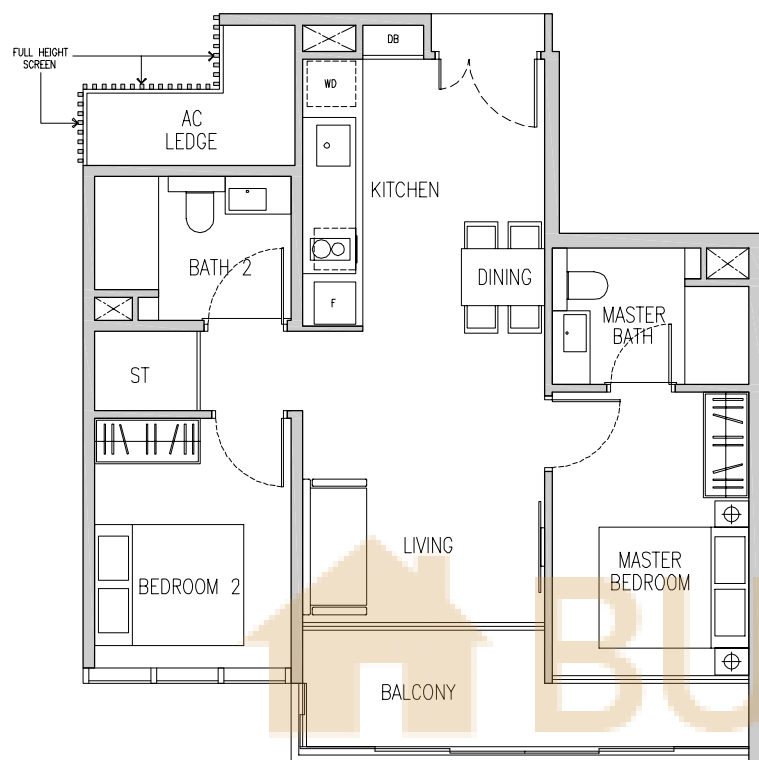


KEY PLAN
(PLAN IS NOT TO SCALE)

Type B5

74 sq m / 797 sq ft

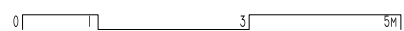
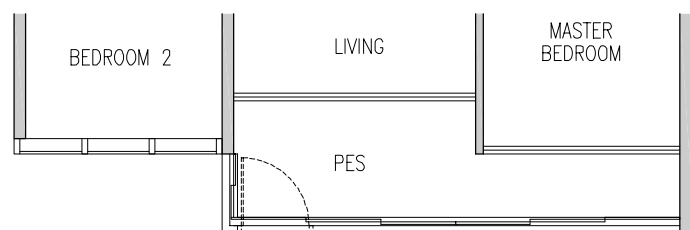
188 Holland Road
#02-11



Type B5p

74 sq m / 797 sq ft

188 Holland Road
#01-11

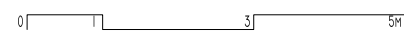
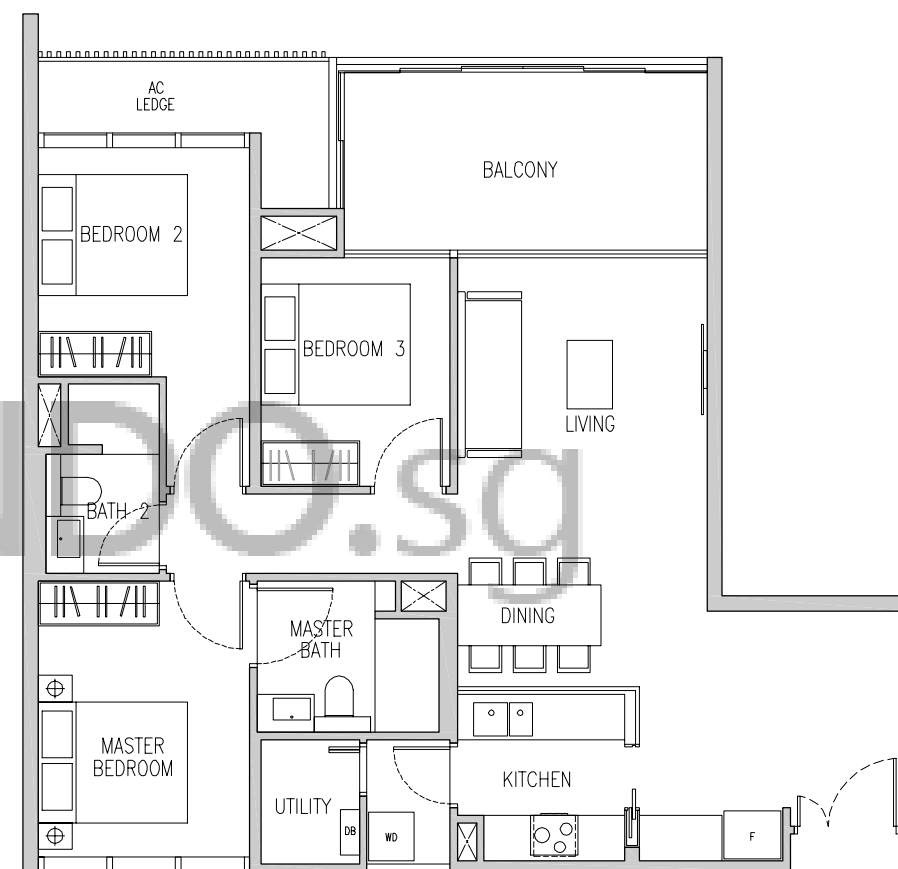


Area includes A/C ledge, balcony and PES. Orientations and facings will differ depending on the unit you are purchasing. Please refer to the key plan. The plans are subject to change as may be required or approved by relevant authorities. All areas are approximate and subject to final survey. The developer and its agents cannot be held liable for any inaccuracies.

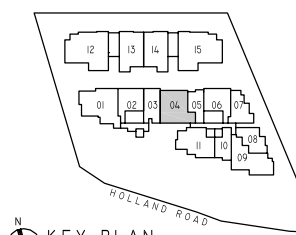
Type C1

105 sq m / 1130 sq ft

188 Holland Road
#02-04 to #05-04



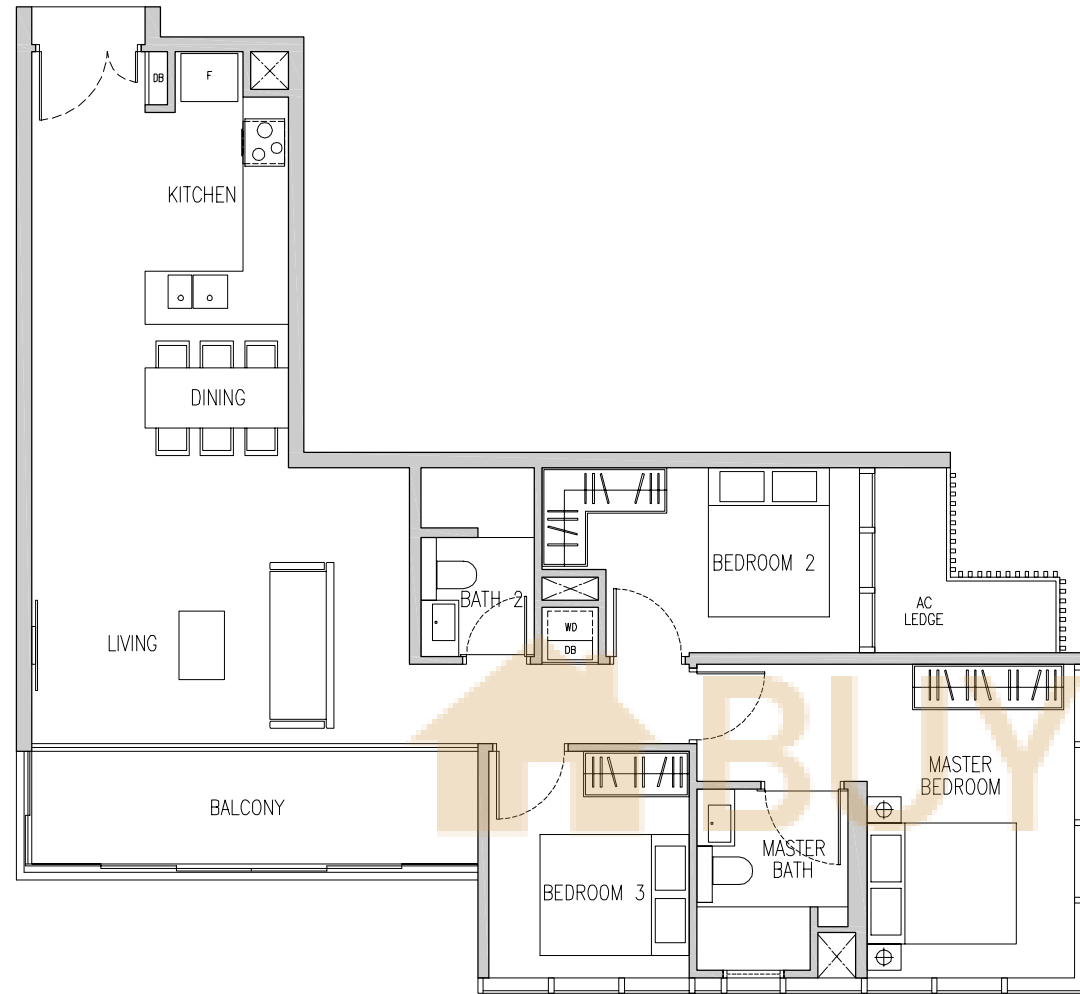
Area includes A/C ledge, balcony and PES. Orientations and facings will differ depending on the unit you are purchasing. Please refer to the key plan. The plans are subject to change as may be required or approved by relevant authorities. All areas are approximate and subject to final survey. The developer and its agents cannot be held liable for any inaccuracies.



Type C2

107 sq m / 1152 sq ft

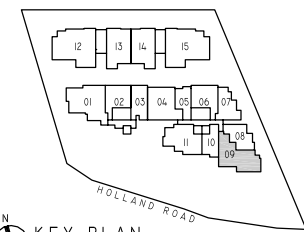
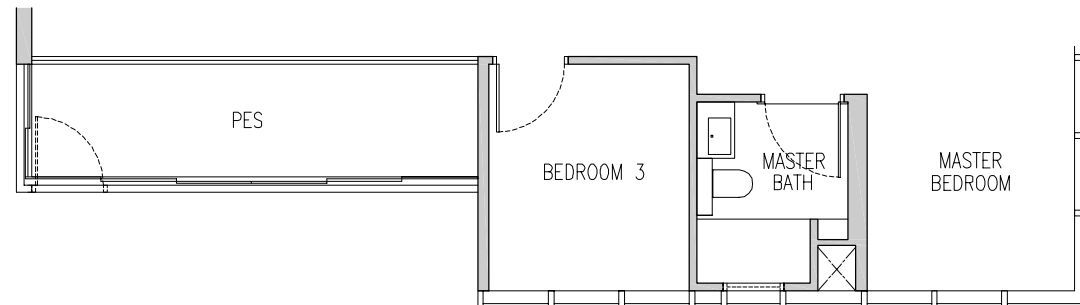
188 Holland Road
#02-09 to #05-09



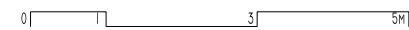
Type C2p

107 sq m / 1152 sq ft

188 Holland Road
#01-09



KEY PLAN
(PLAN IS NOT TO SCALE)

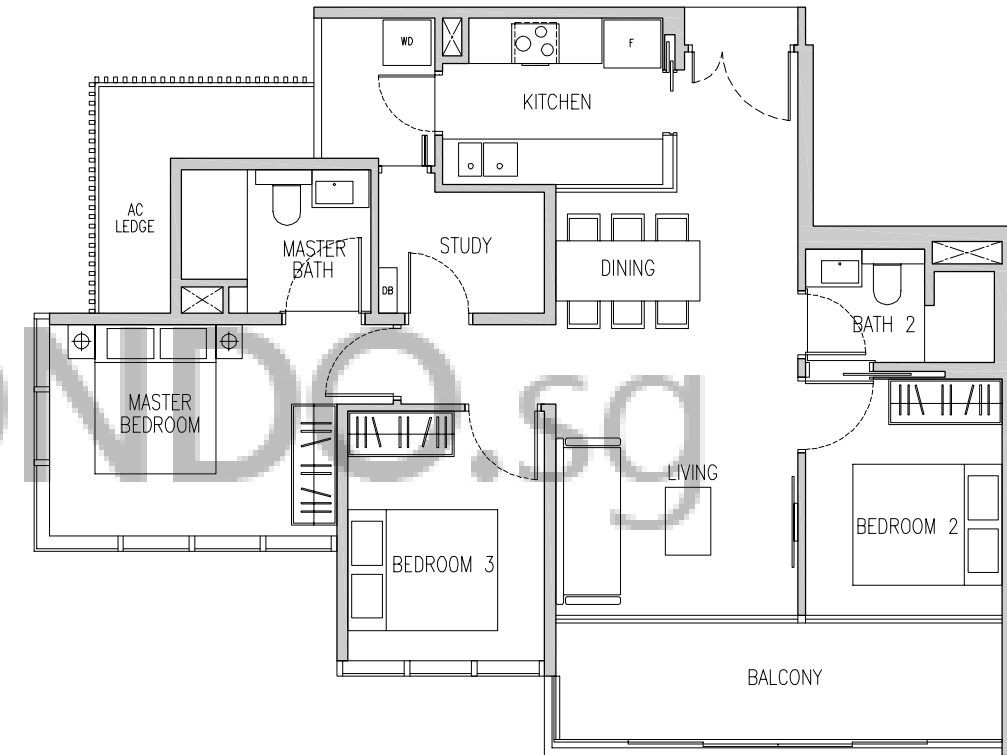


Area includes A/C ledge, balcony and PES. Orientations and facings will differ depending on the unit you are purchasing. Please refer to the key plan. The plans are subject to change as may be required or approved by relevant authorities. All areas are approximate and subject to final survey. The developer and its agents cannot be held liable for any inaccuracies.

Type C3

98 sq m / 1055 sq ft

188 Holland Road
#03-11 to #05-11



Area includes A/C ledge, balcony and PES. Orientations and facings will differ depending on the unit you are purchasing. Please refer to the key plan. The plans are subject to change as may be required or approved by relevant authorities. All areas are approximate and subject to final survey. The developer and its agents cannot be held liable for any inaccuracies.

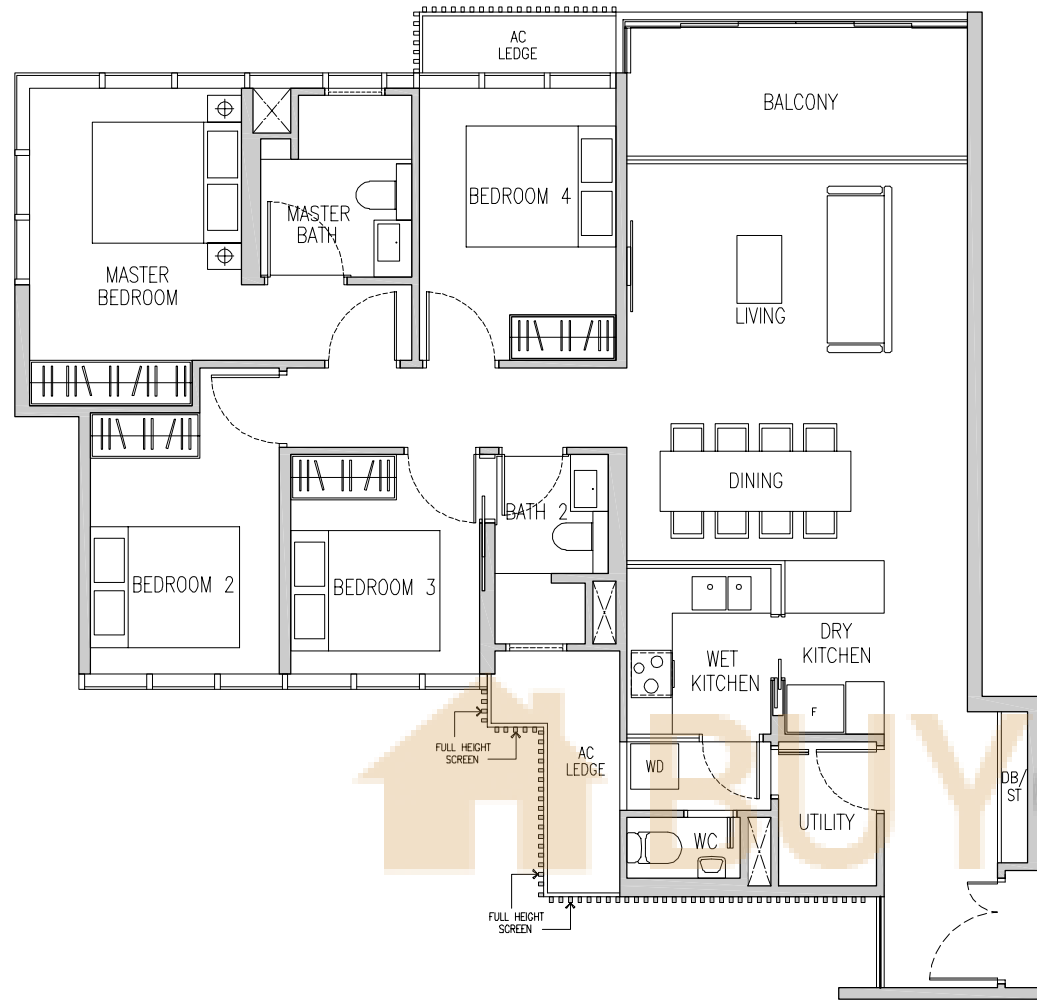


KEY PLAN
(PLAN IS NOT TO SCALE)

Type D

125 sq m / 1345 sq ft

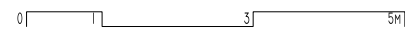
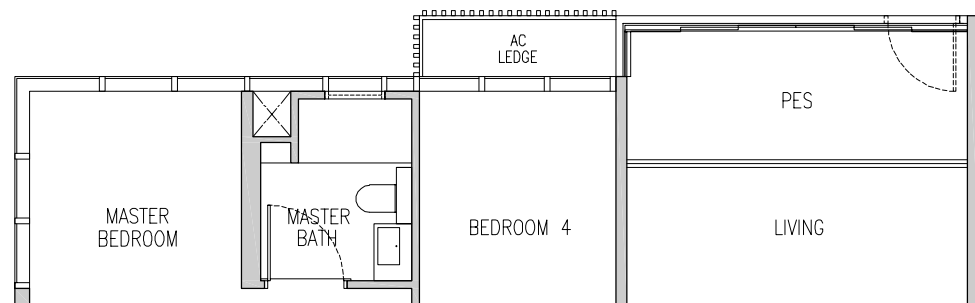
186 Holland Road
#02-01 to #05-01



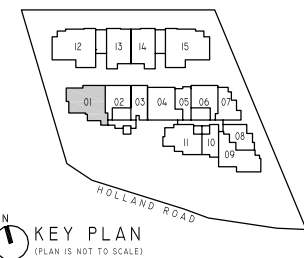
Type Dp

125 sq m / 1345 sq ft

186 Holland Road
#01-01



Area includes A/C ledge, balcony and PES. Orientations and facings will differ depending on the unit you are purchasing. Please refer to the key plan. The plans are subject to change as may be required or approved by relevant authorities. All areas are approximate and subject to final survey. The developer and its agents cannot be held liable for any inaccuracies.

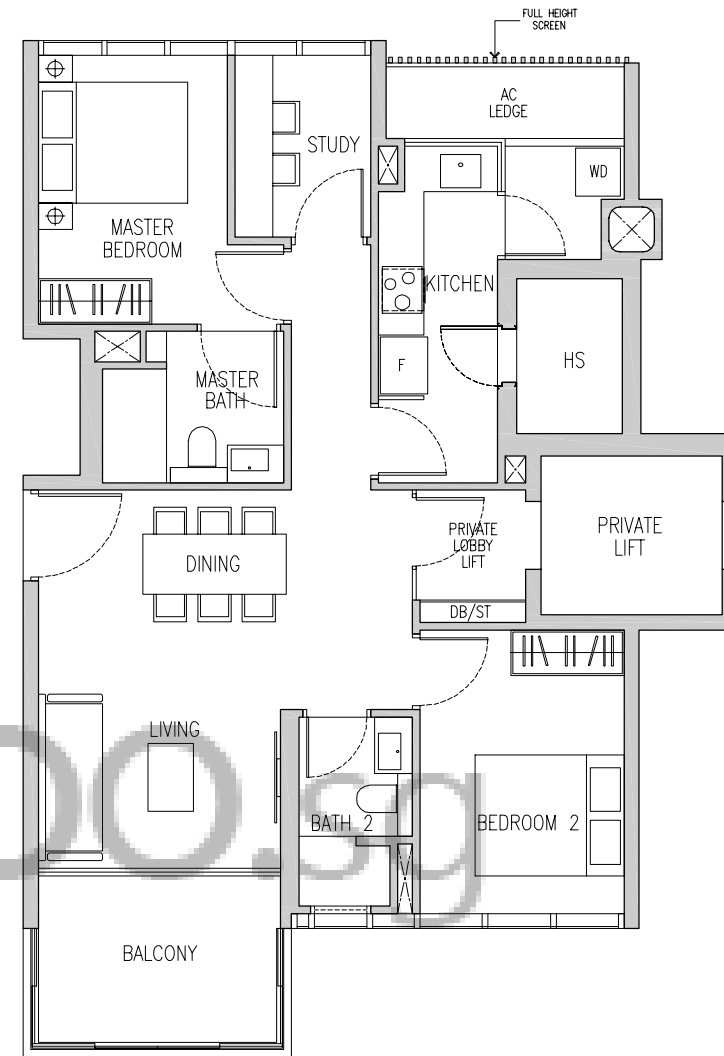


KEY PLAN
(PLAN IS NOT TO SCALE)

Type L1

93 sq m / 1001 sq ft

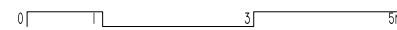
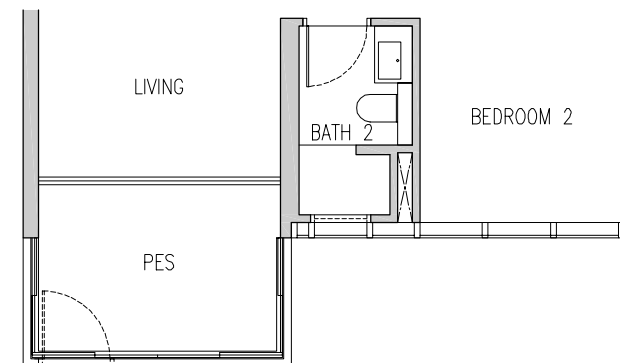
190 Holland Road
#02-13 to #04-13,
#02-14* to #04-14*



Type L1p

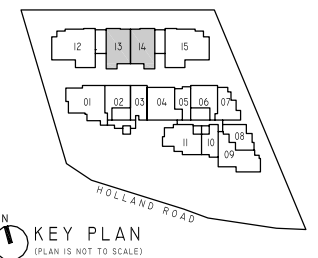
93 sq m / 1001 sq ft

190 Holland Road
#01-13
#01-14*



Area includes A/C ledge, balcony and PES. Orientations and facings will differ depending on the unit you are purchasing. Please refer to the key plan. The plans are subject to change as may be required or approved by relevant authorities. All areas are approximate and subject to final survey. The developer and its agents cannot be held liable for any inaccuracies.

*Denotes Mirrored Unit

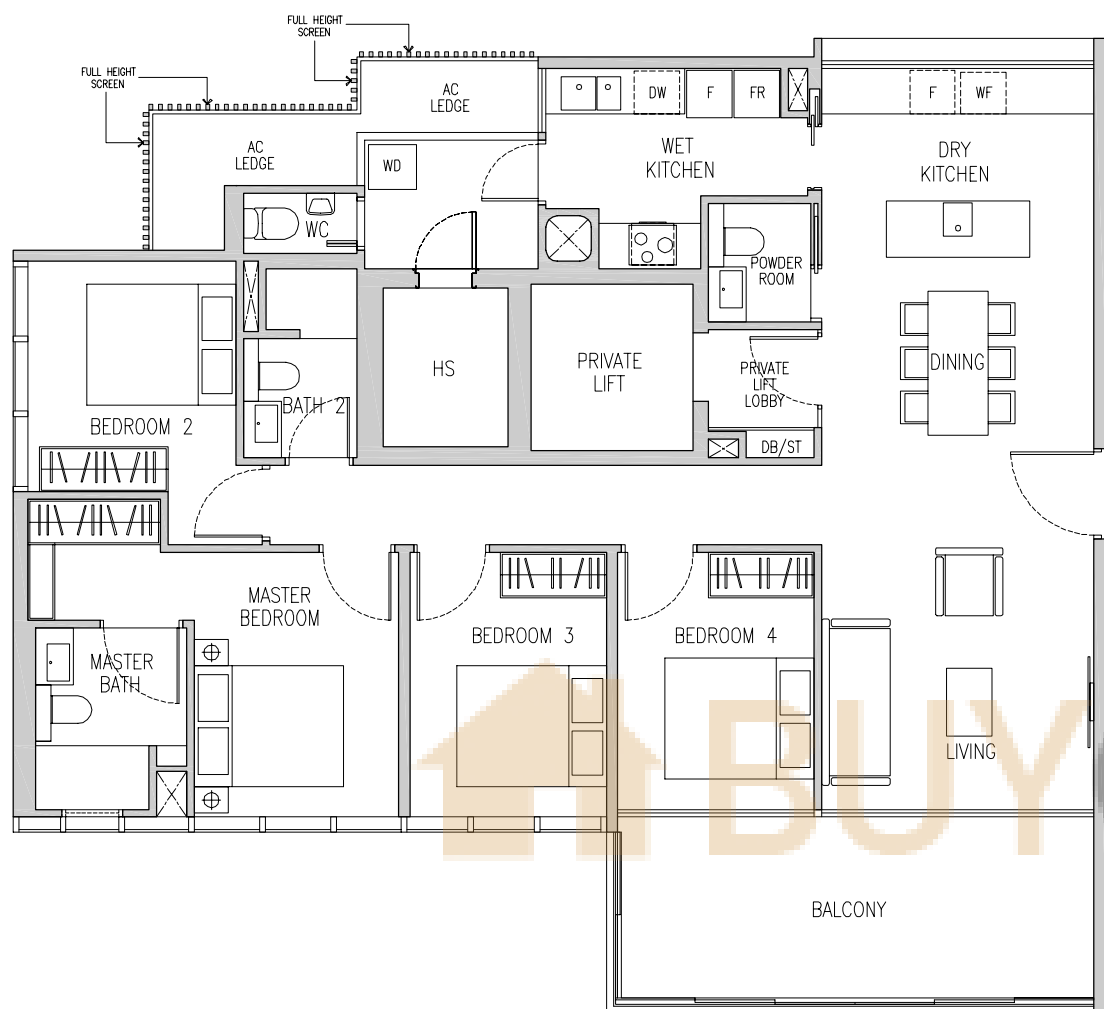


KEY PLAN
(PLAN IS NOT TO SCALE)

Type L2

148 sq m / 1593 sq ft

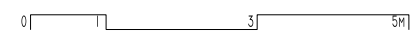
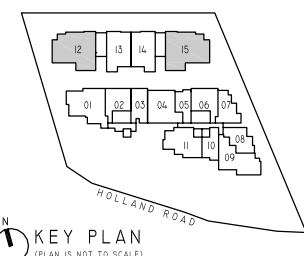
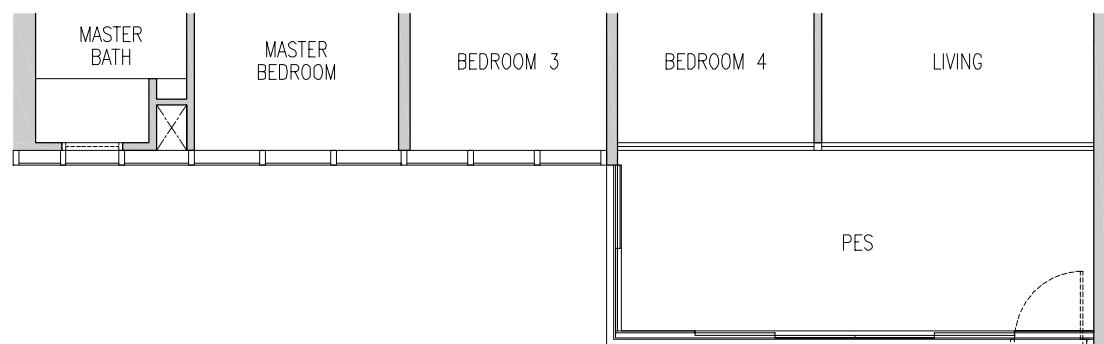
190 Holland Road
#02-12 to #03-12,
#02-15* to #03-15*



Type L2p

148 sq m / 1593 sq ft

190 Holland Road
#01-12
#01-15*



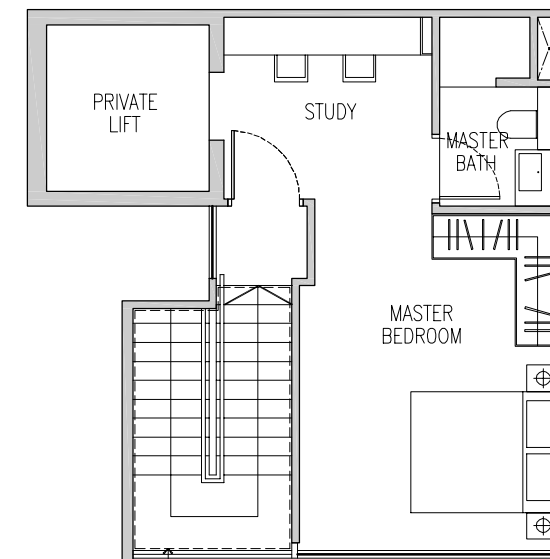
*Denotes Mirrored Unit

Area includes A/C ledge, balcony and PES. Orientations and facings will differ depending on the unit you are purchasing. Please refer to the key plan. The plans are subject to change as may be required or approved by relevant authorities. All areas are approximate and subject to final survey. The developer and its agents cannot be held liable for any inaccuracies.

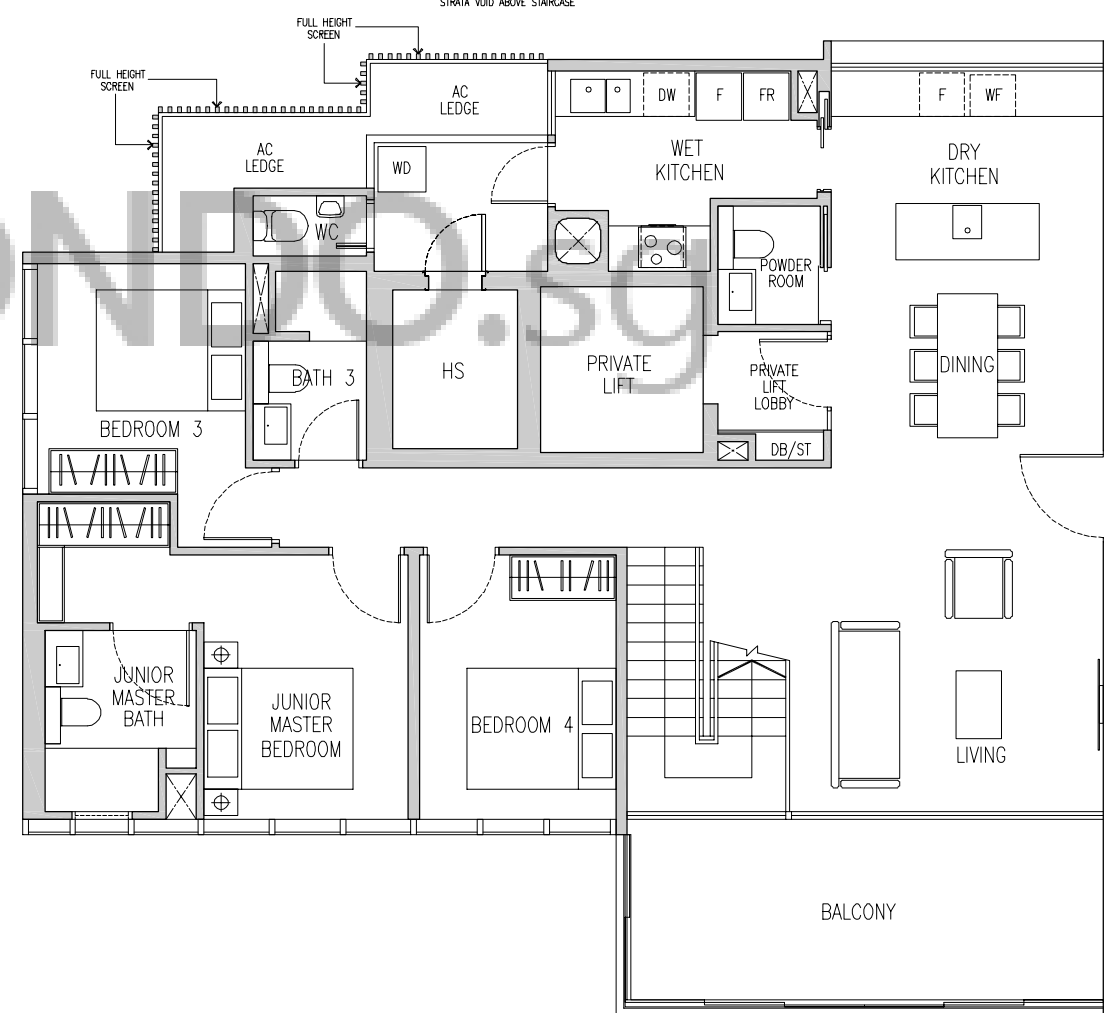
Type L2a

185 sq m / 1991 sq ft

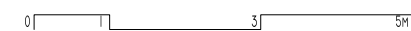
190 Holland Road
#04-12
#04-15*



ATTIC FLOOR



LOWER FLOOR



*Denotes Mirrored Unit

Area includes A/C ledge, balcony, strata void and PES. Orientations and facings will differ depending on the unit you are purchasing. Please refer to the key plan. The plans are subject to change as may be required or approved by relevant authorities. All areas are approximate and subject to final survey. The developer and its agents cannot be held liable for any inaccuracies.

