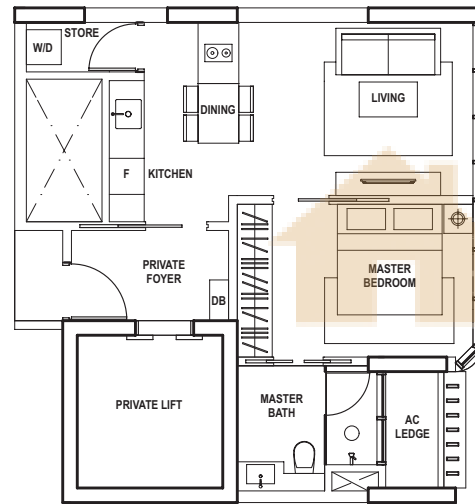


# Type A1

1 Bedroom  
49 sq.m. (527 sq.ft.)

#08-06, #14-06

(Mirrored)  
#05-05, #11-05, #17-05



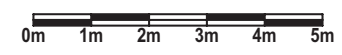
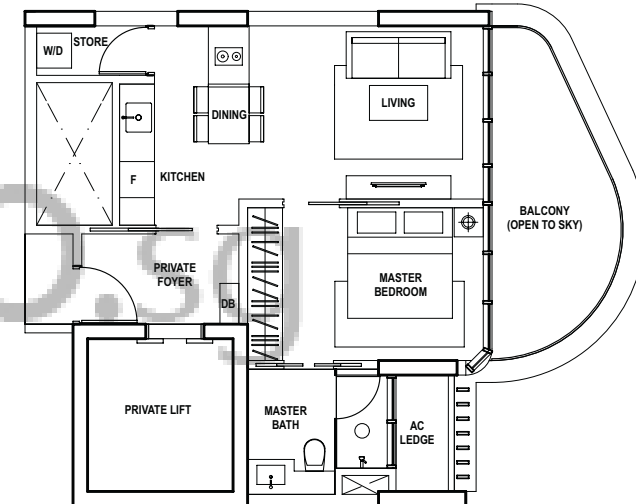
BUYCONDO.SA

# Type A2

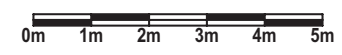
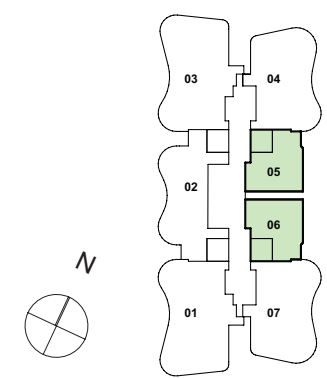
1 Bedroom  
59 sq.m. (635 sq.ft.)

#07-06, #13-06, #19-06

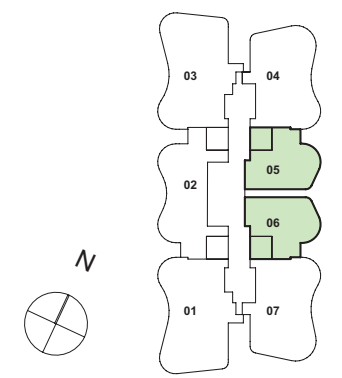
(Mirrored)  
#10-05, #16-05



All plans are not to scale and are subject to change as may be approved by authorities.  
All floor areas are approximate only and are subject to final survey.



All plans are not to scale and are subject to change as may be approved by authorities.  
All floor areas are approximate only and are subject to final survey.

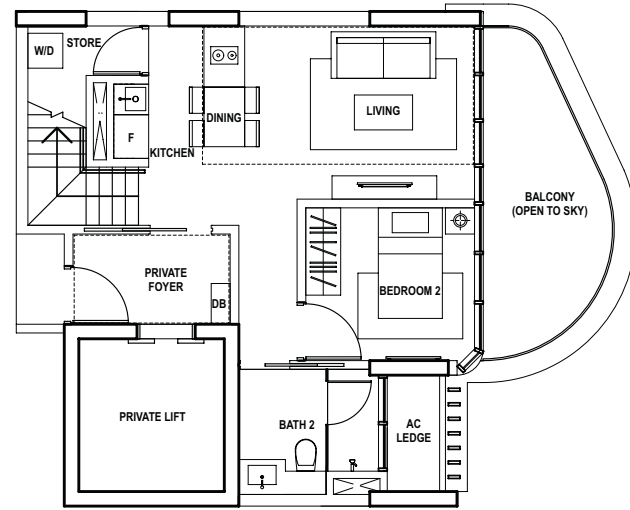


# Type Loft

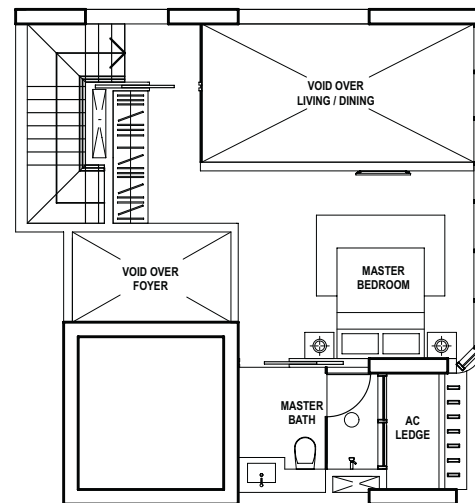
2 Bedroom  
113 sq.m. (1,216 sq.ft.)

#03-06, #05-06, #09-06,  
#11-06, #15-06, #17-06

(Mirrored)  
#03-05, #06-05, #08-05,  
#12-05, #14-05, #18-05



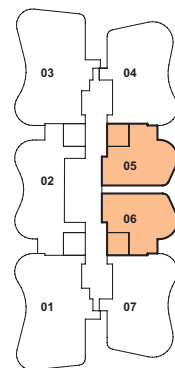
LOWER LEVEL  
(dotted line denotes double height ceiling space)



UPPER LEVEL



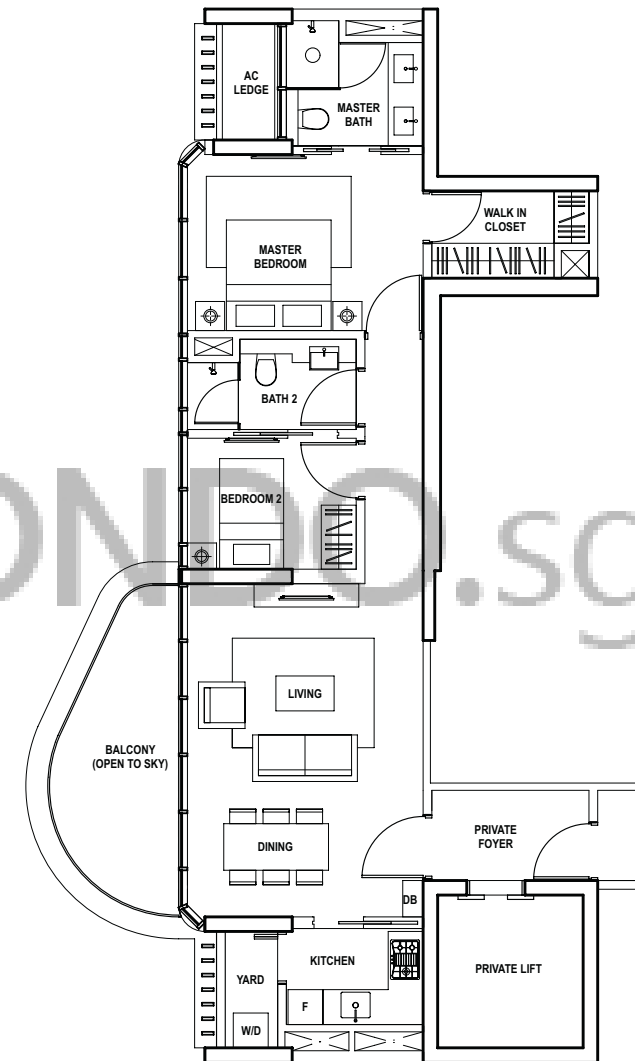
All plans are not to scale and are subject to change as may be approved by authorities.  
All floor areas are approximate only and are subject to final survey.



# Type B1

2 Bedroom  
92 sq.m. (990 sq. ft.)

#06-02 to #12-02;  
#15-02 to #19-02

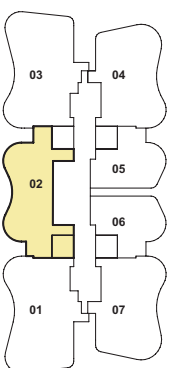
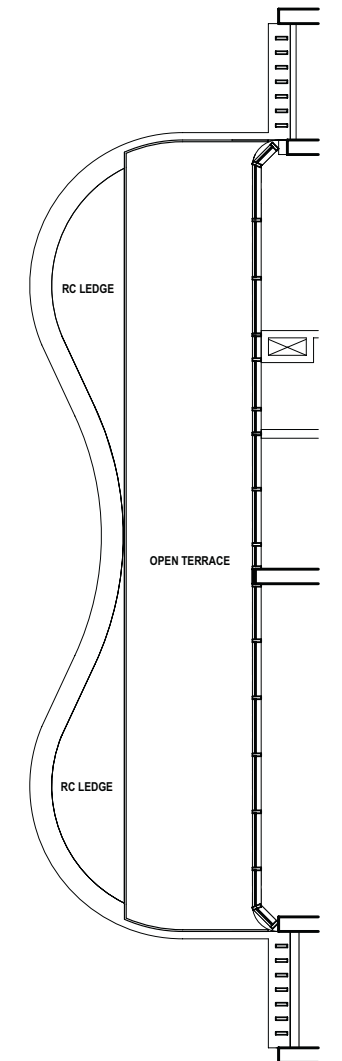


All plans are not to scale and are subject to change as may be approved by authorities.  
All floor areas are approximate only and are subject to final survey.

# Type B1a

2 Bedroom  
113 sq.m. (1,216 sq.ft.)

#05-02

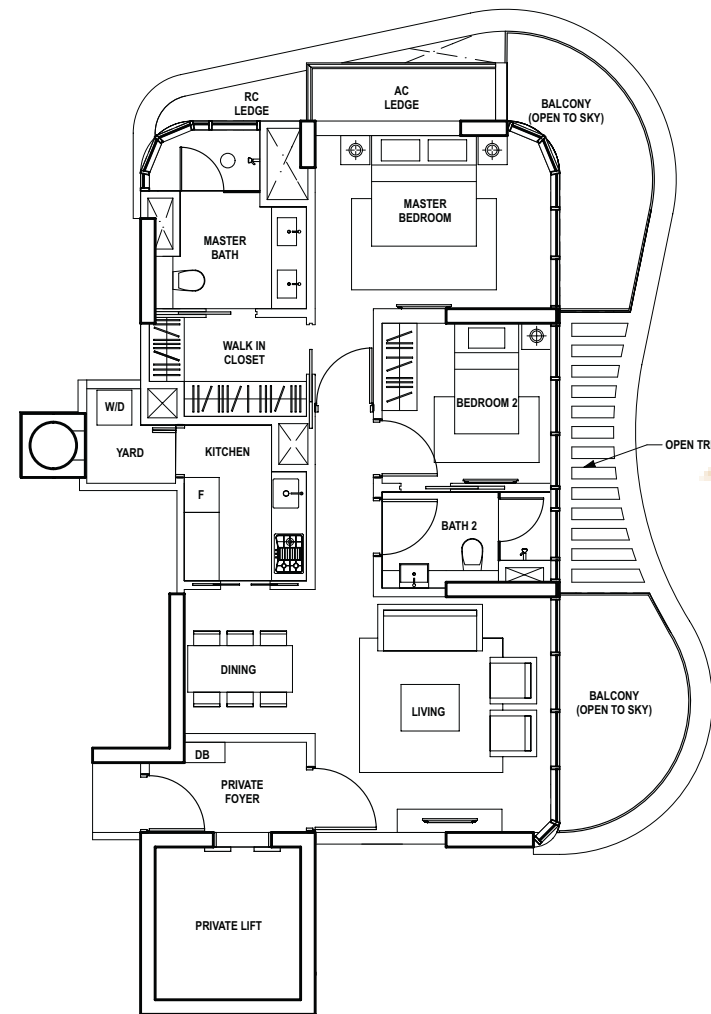


## Type B2

2 Bedroom  
104 sq.m. (1,119 sq.ft.)

#06-04 to #19-04

(Mirrored)  
#06-07 to #19-07



0m 1m 2m 3m 4m 5m

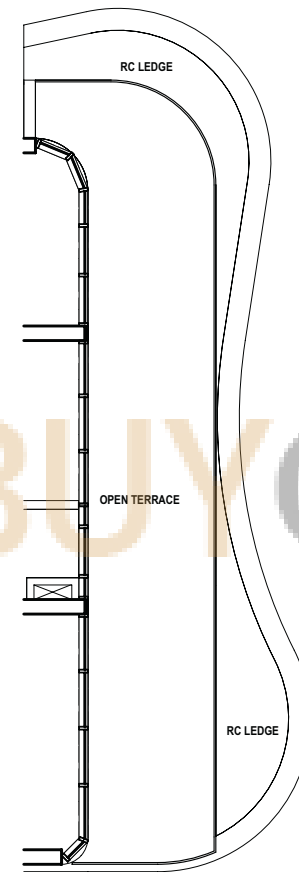
All plans are not to scale and are subject to change as may be approved by authorities.  
All floor areas are approximate only and are subject to final survey.

## Type B2a

2 Bedroom  
119 sq.m. (1,281 sq.ft.)

#05-04

(Mirrored)  
#05-07

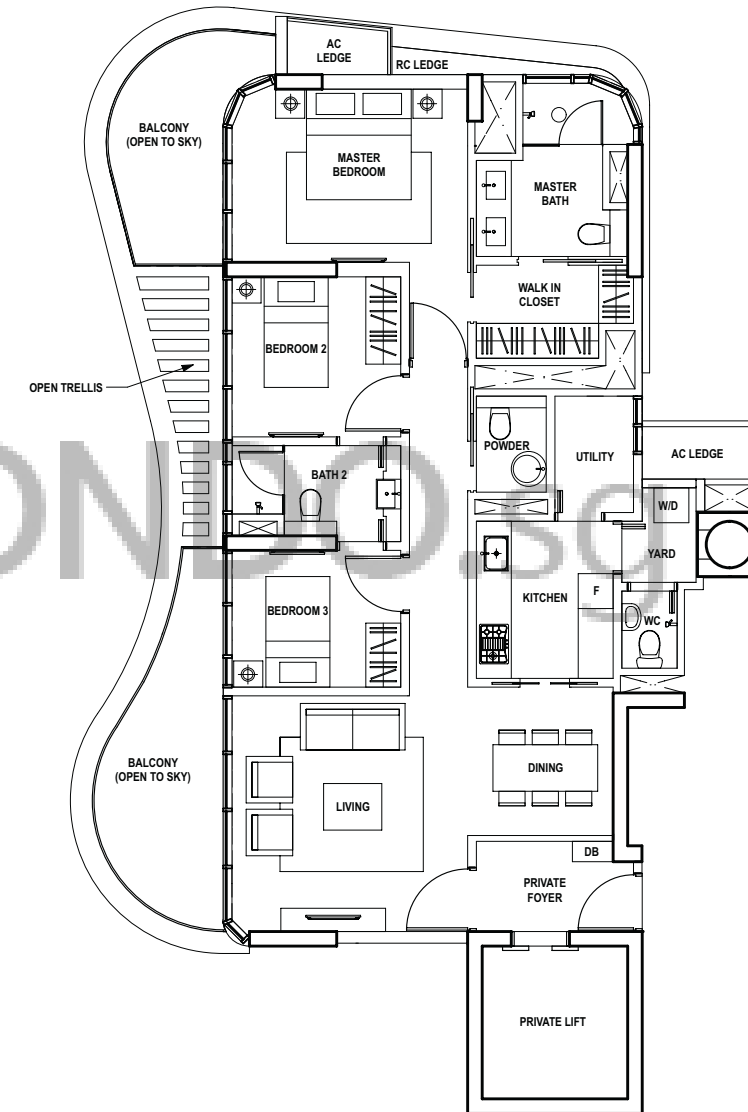


## Type C1

3 Bedroom  
124 sq.m. (1,335 sq.ft.)

#06-03 to #19-03

(Mirrored)  
#06-01 to #19-01



0m 1m 2m 3m 4m 5m

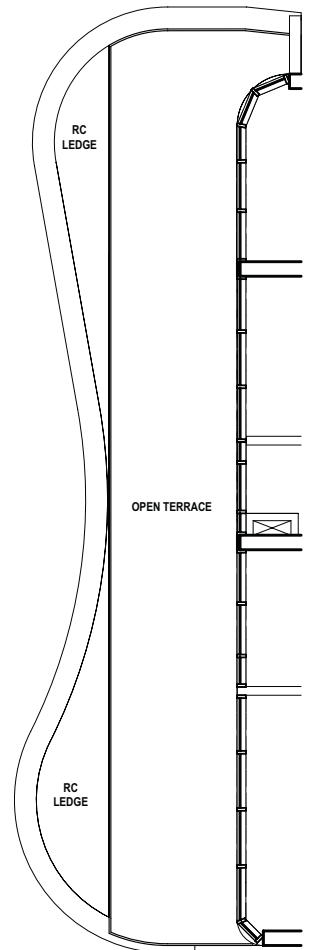
All plans are not to scale and are subject to change as may be approved by authorities.  
All floor areas are approximate only and are subject to final survey.

## Type C1a

3 Bedroom  
142 sq.m. (1,528 sq.ft.)

#05-03

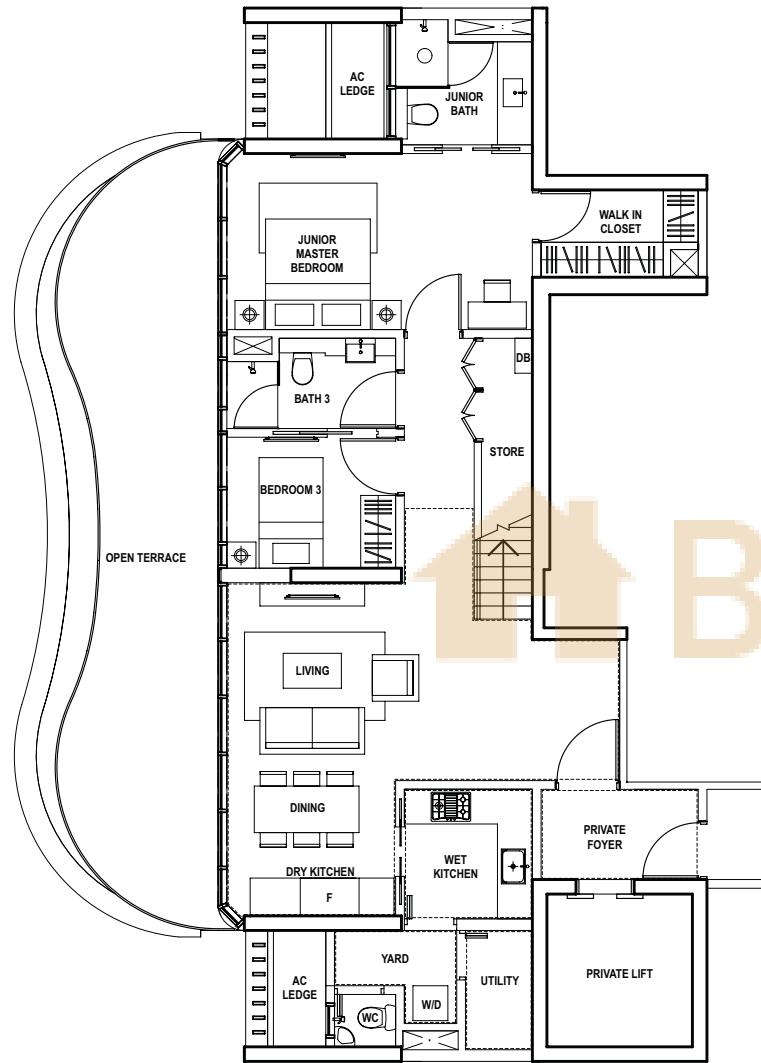
(Mirrored)  
#05-01



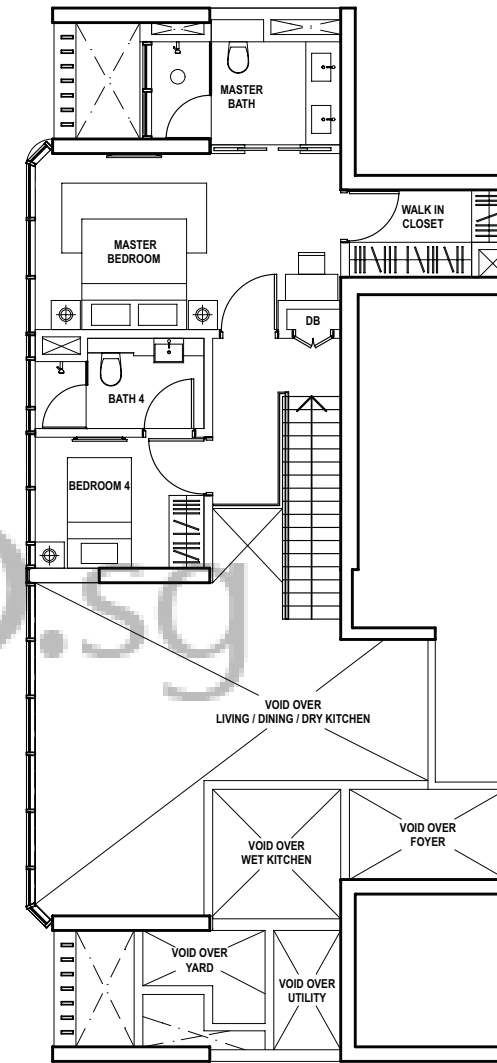
# Grandeur 1

4 Bedroom  
236 sq.m. (2,540 sq.ft.)

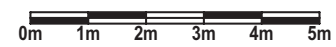
#03-02



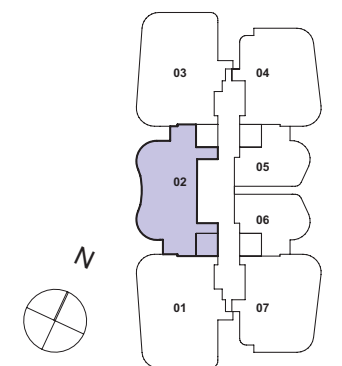
LOWER LEVEL  
(dotted line denotes double height ceiling space)



UPPER LEVEL



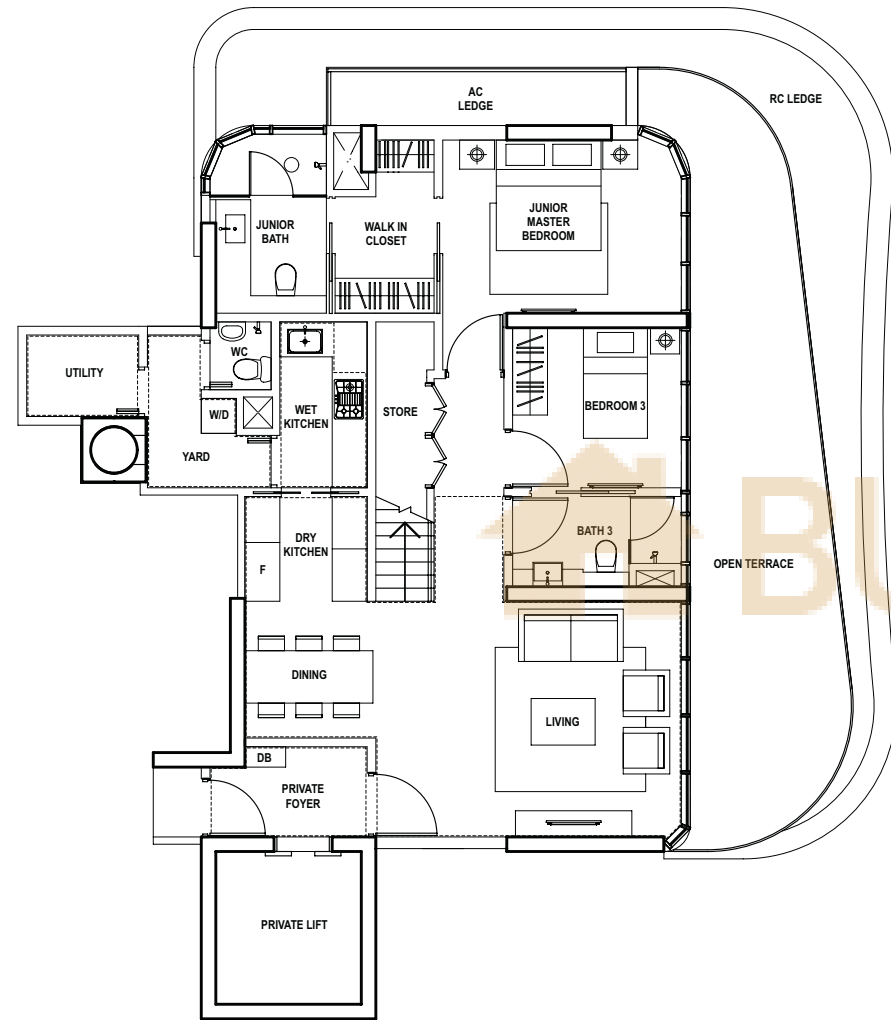
All plans are not to scale and are subject to change as may be approved by authorities.  
All floor areas are approximate only and are subject to final survey.



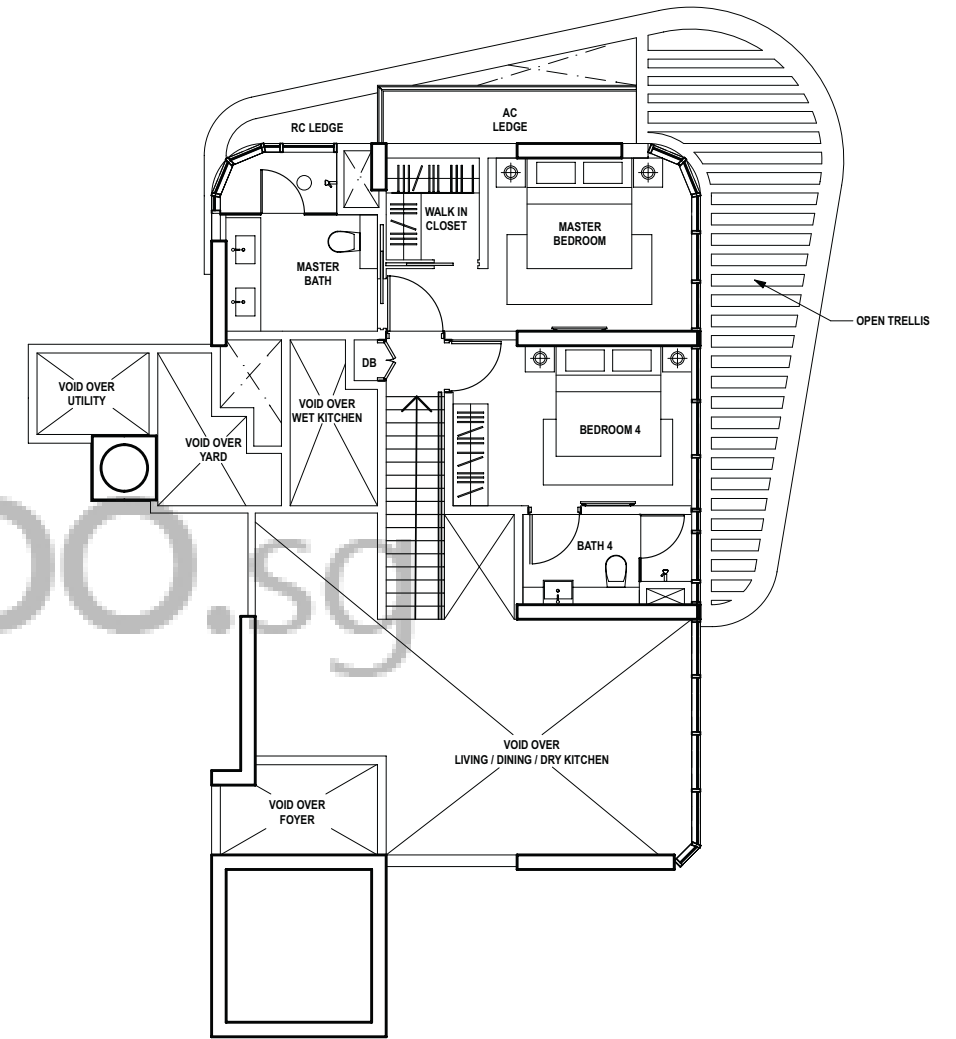
# Grandeur 2

4 Bedroom  
247 sq.m. (2,659 sq.ft.)

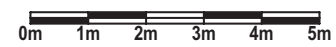
#03-04



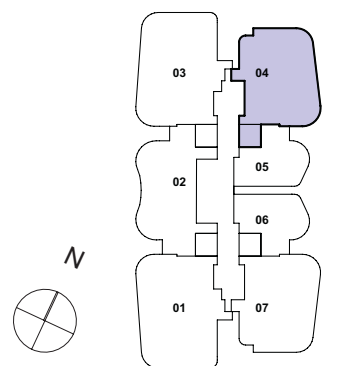
LOWER LEVEL  
(dotted line denotes double height ceiling space)



UPPER LEVEL



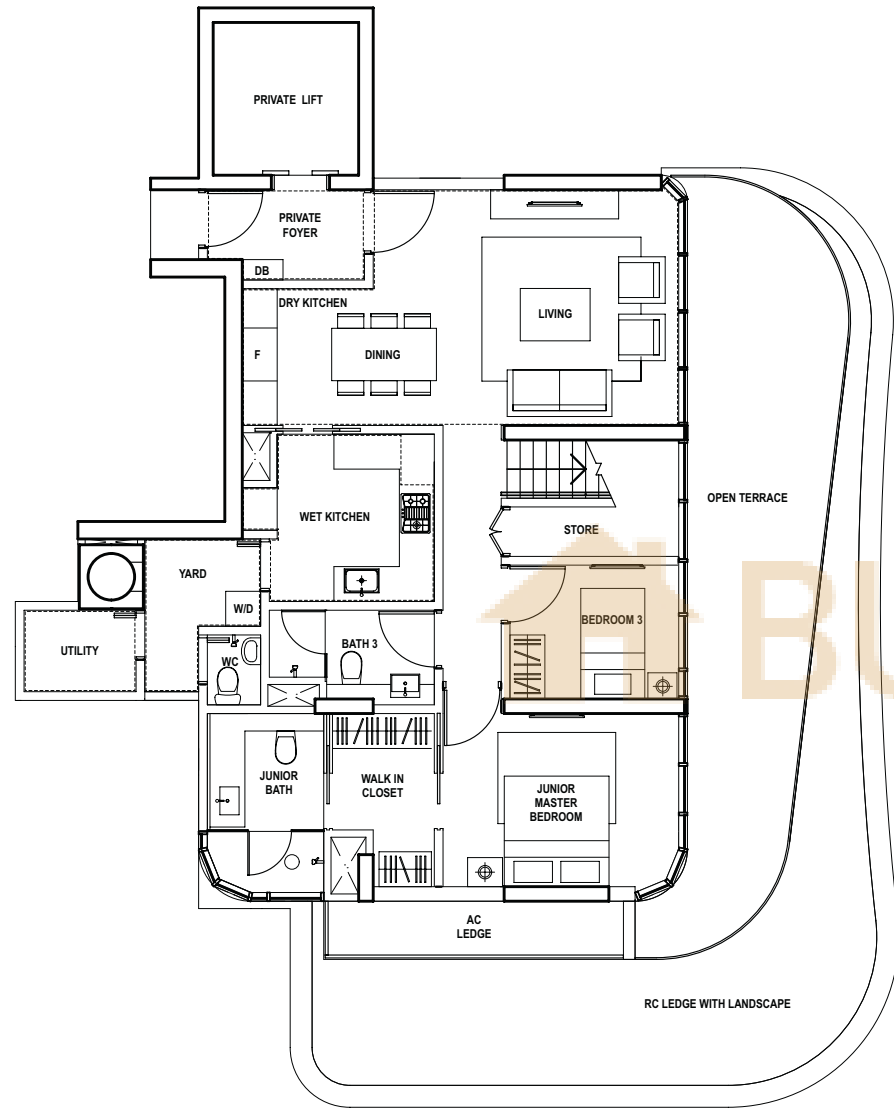
All plans are not to scale and are subject to change as may be approved by authorities.  
All floor areas are approximate only and are subject to final survey.



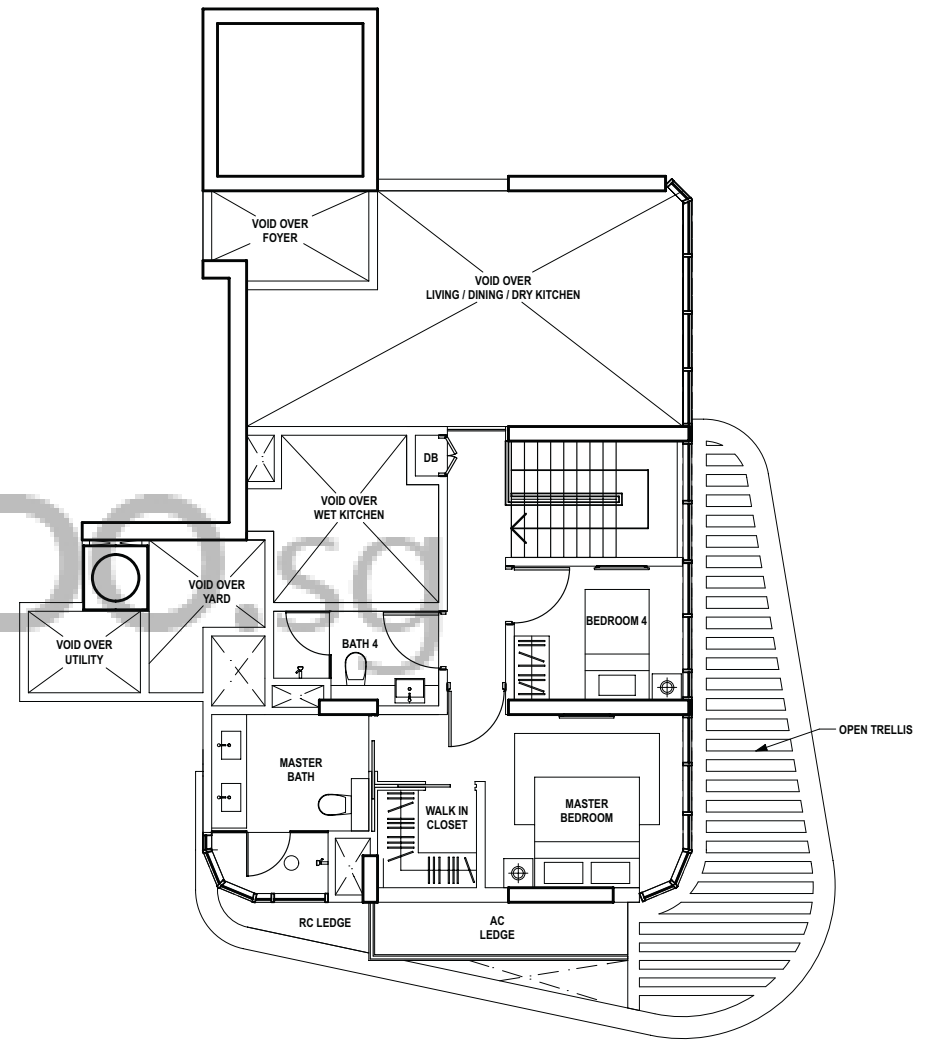
# Grandeur 3

4 Bedroom  
247 sq.m. (2,659 sq.ft.)

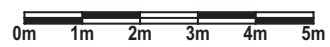
#03-07



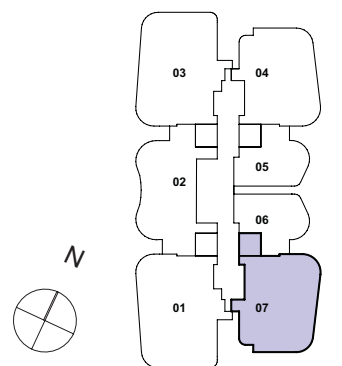
LOWER LEVEL  
(dotted line denotes double height ceiling space)



UPPER LEVEL



All plans are not to scale and are subject to change as may be approved by authorities.  
All floor areas are approximate only and are subject to final survey.

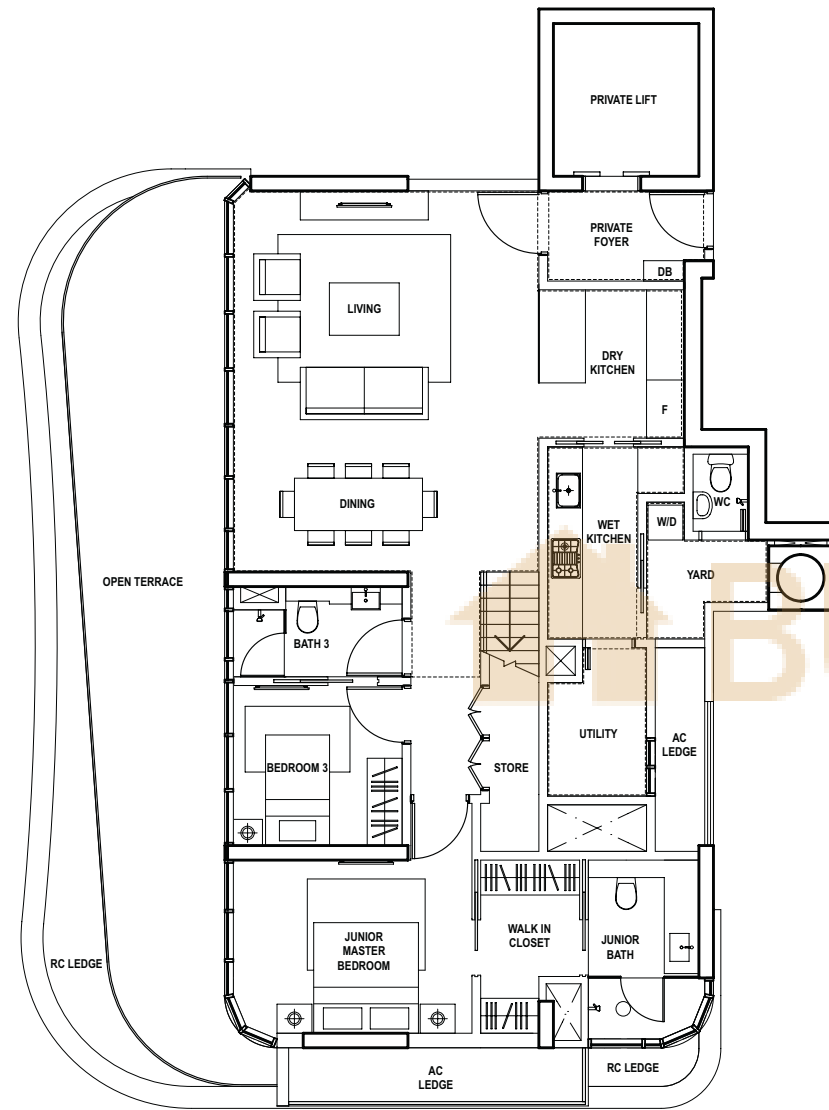


# Grandeur 4

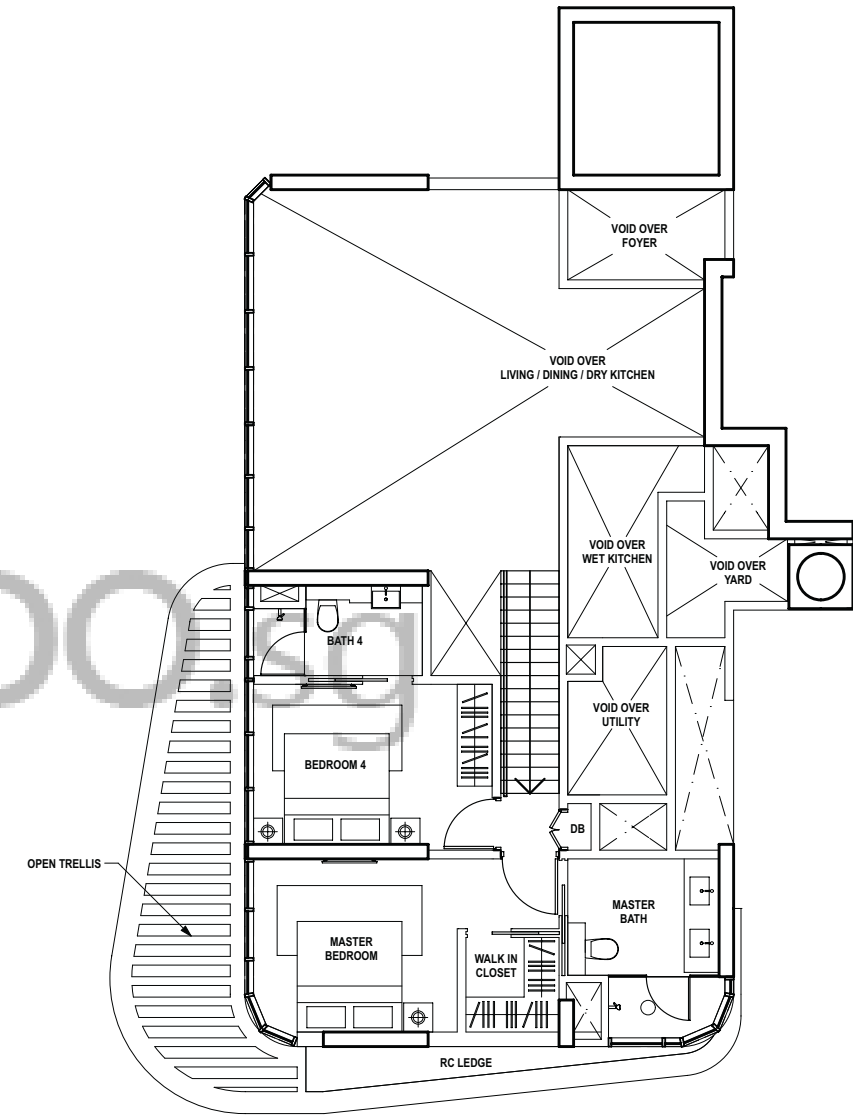
4 Bedroom  
277 sq.m. (2,982 sq.ft.)

#03-01

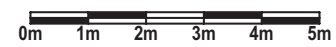
(Mirrored)  
#03-03



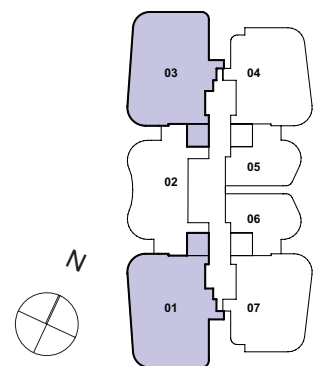
LOWER LEVEL  
(dotted line denotes double height ceiling space)



UPPER LEVEL



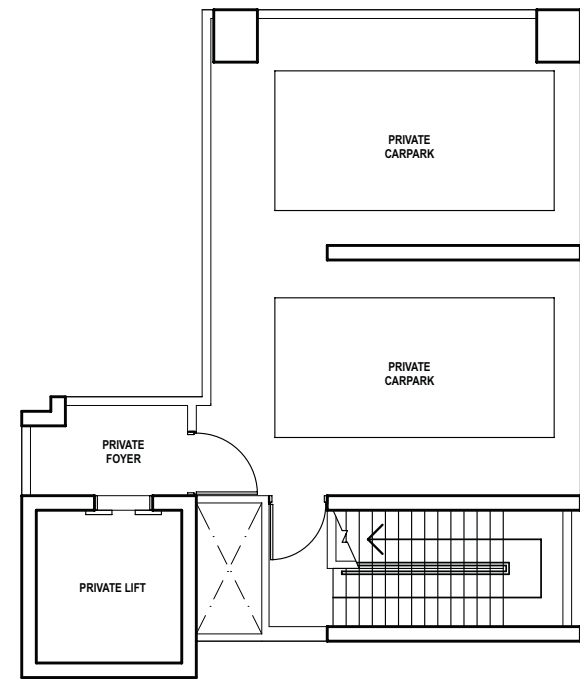
All plans are not to scale and are subject to change as may be approved by authorities.  
All floor areas are approximate only and are subject to final survey.



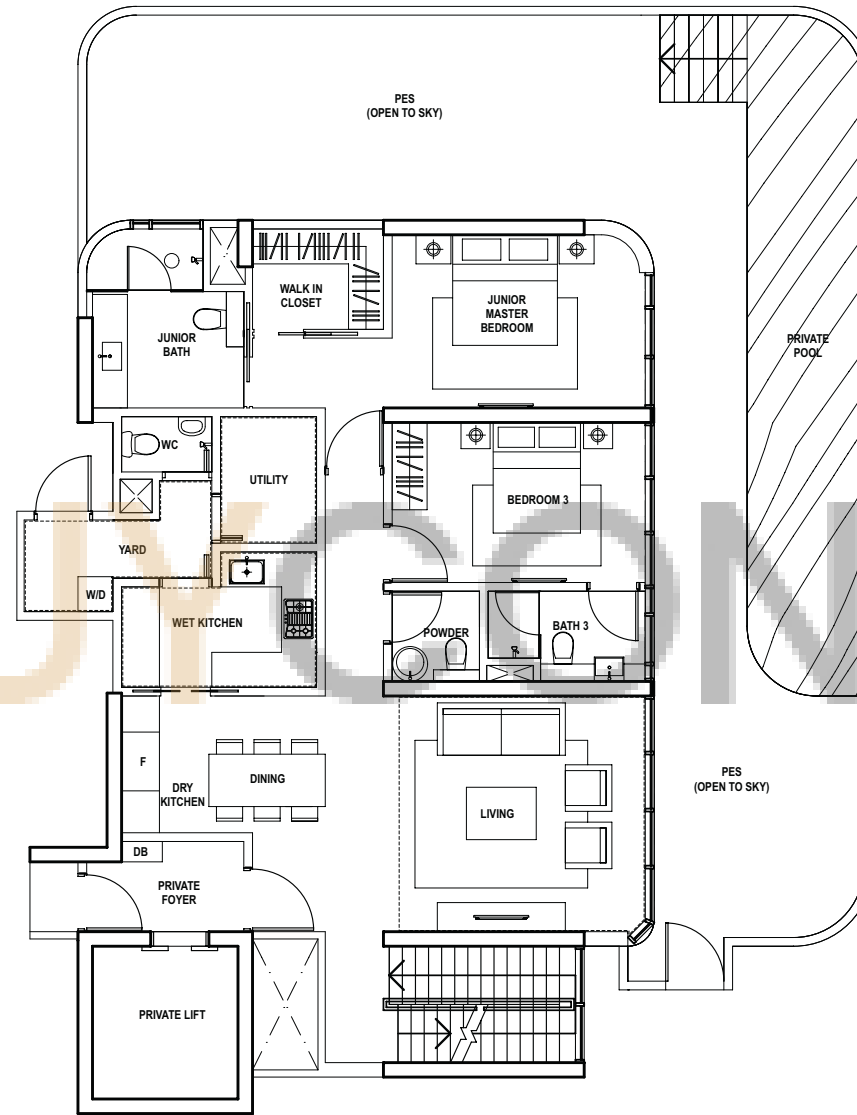
# Garden Villa

4 Bedroom  
430 sq.m. (4,629 sq.ft.)

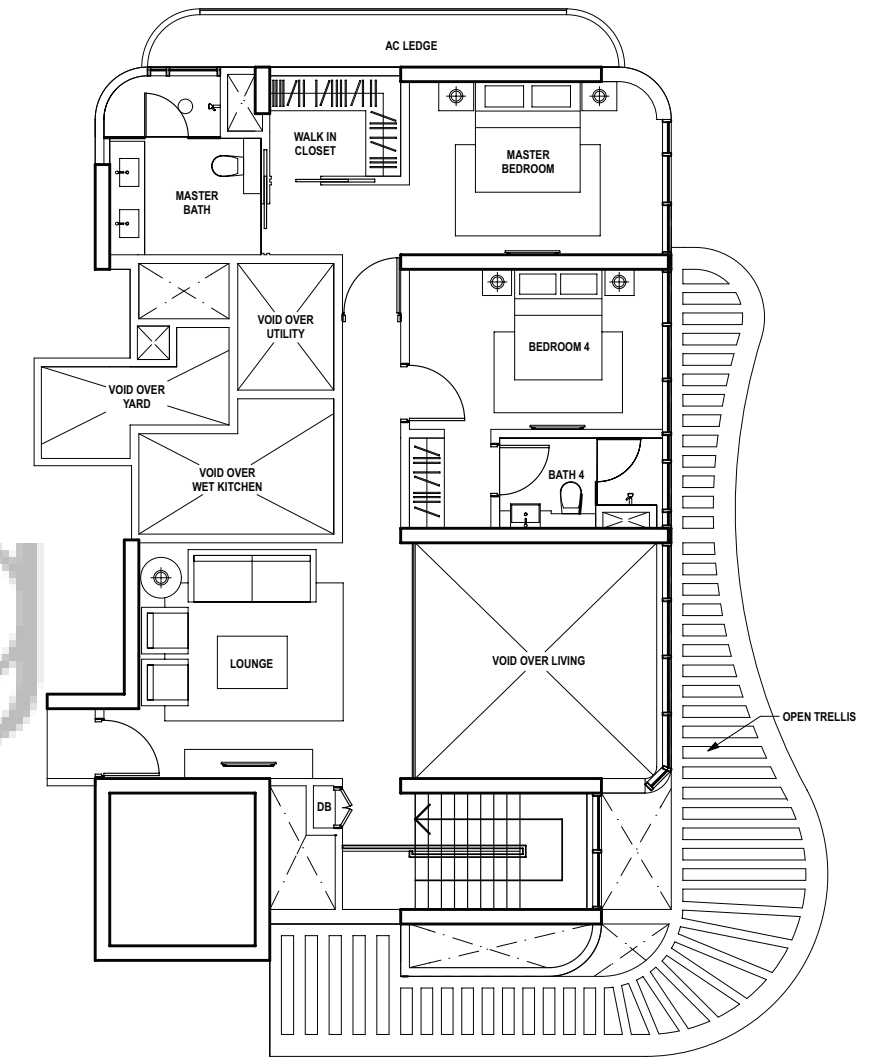
#01-04



BASEMENT LEVEL



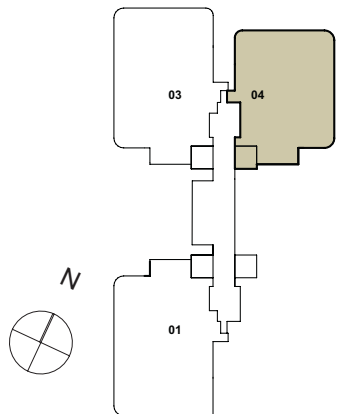
LOWER LEVEL  
(dotted line denotes double height ceiling space)



UPPER LEVEL



All plans are not to scale and are subject to change as may be approved by authorities.  
All floor areas are approximate only and are subject to final survey.

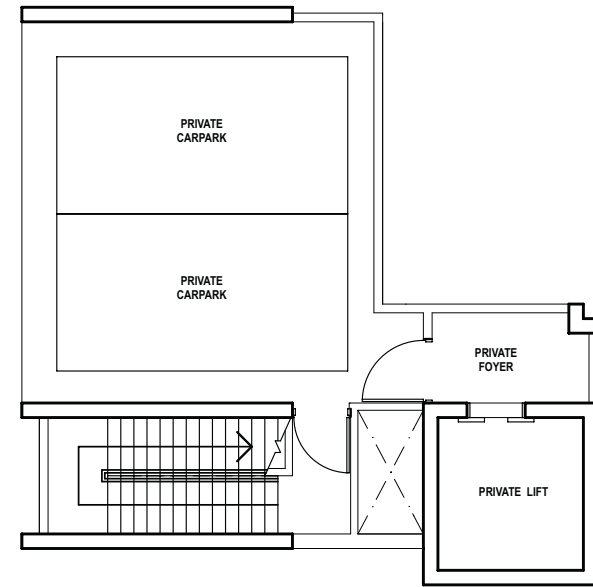




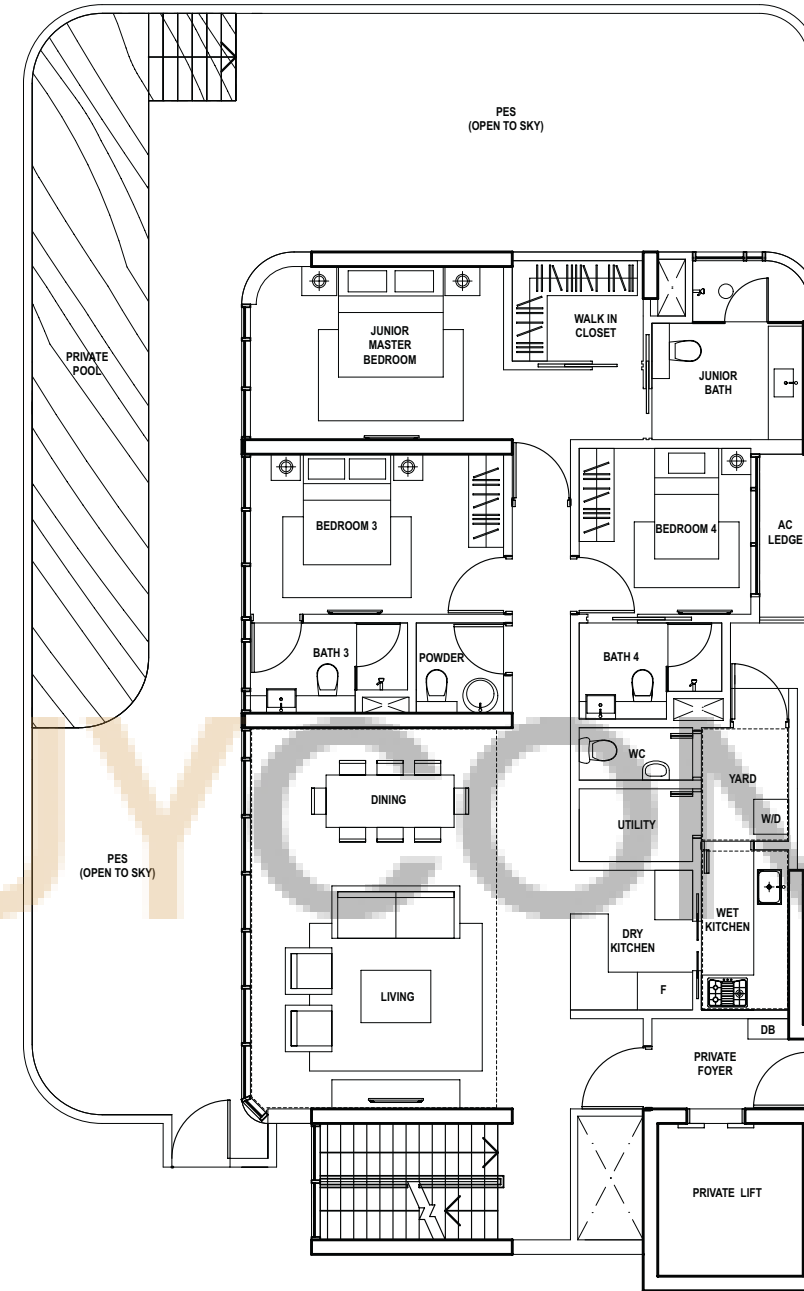
# Grand Villa 1

6 Bedroom  
470 sq.m. (5,059 sq.ft.)

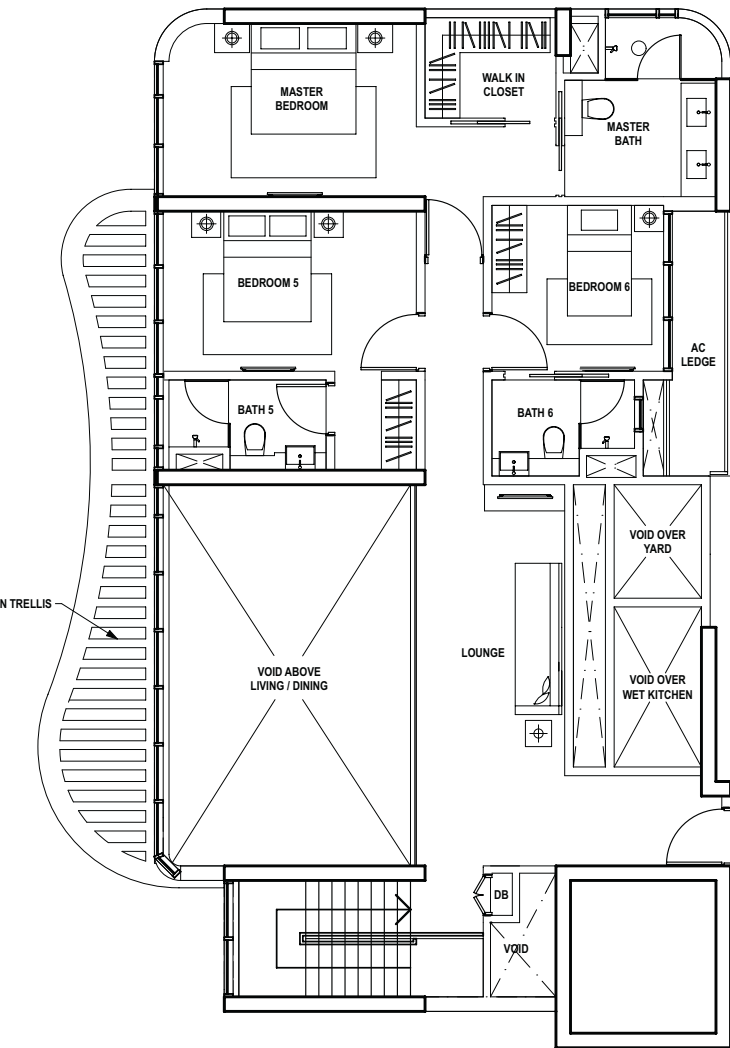
#01-03



BASEMENT LEVEL



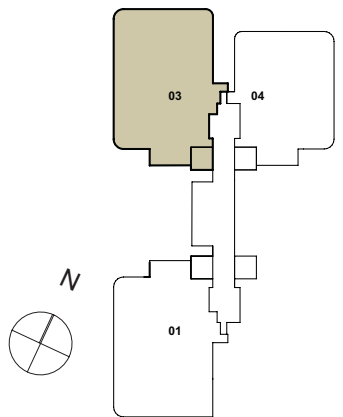
LOWER LEVEL  
(dotted line denotes double height ceiling space)



UPPER LEVEL



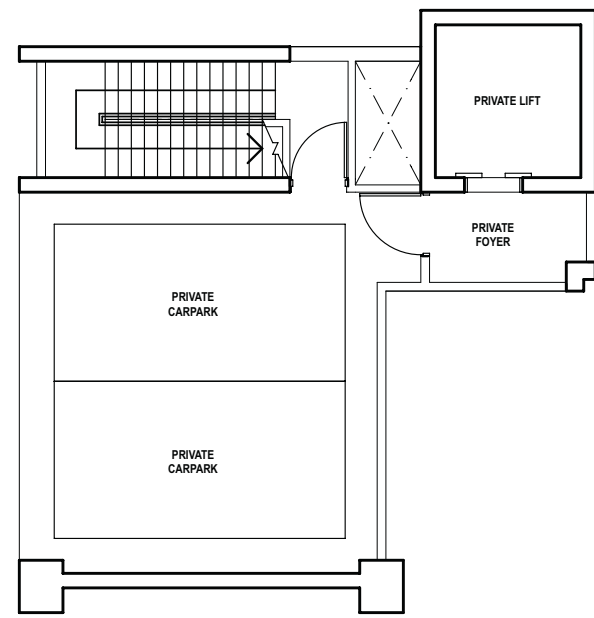
All plans are not to scale and are subject to change as may be approved by authorities.  
All floor areas are approximate only and are subject to final survey.



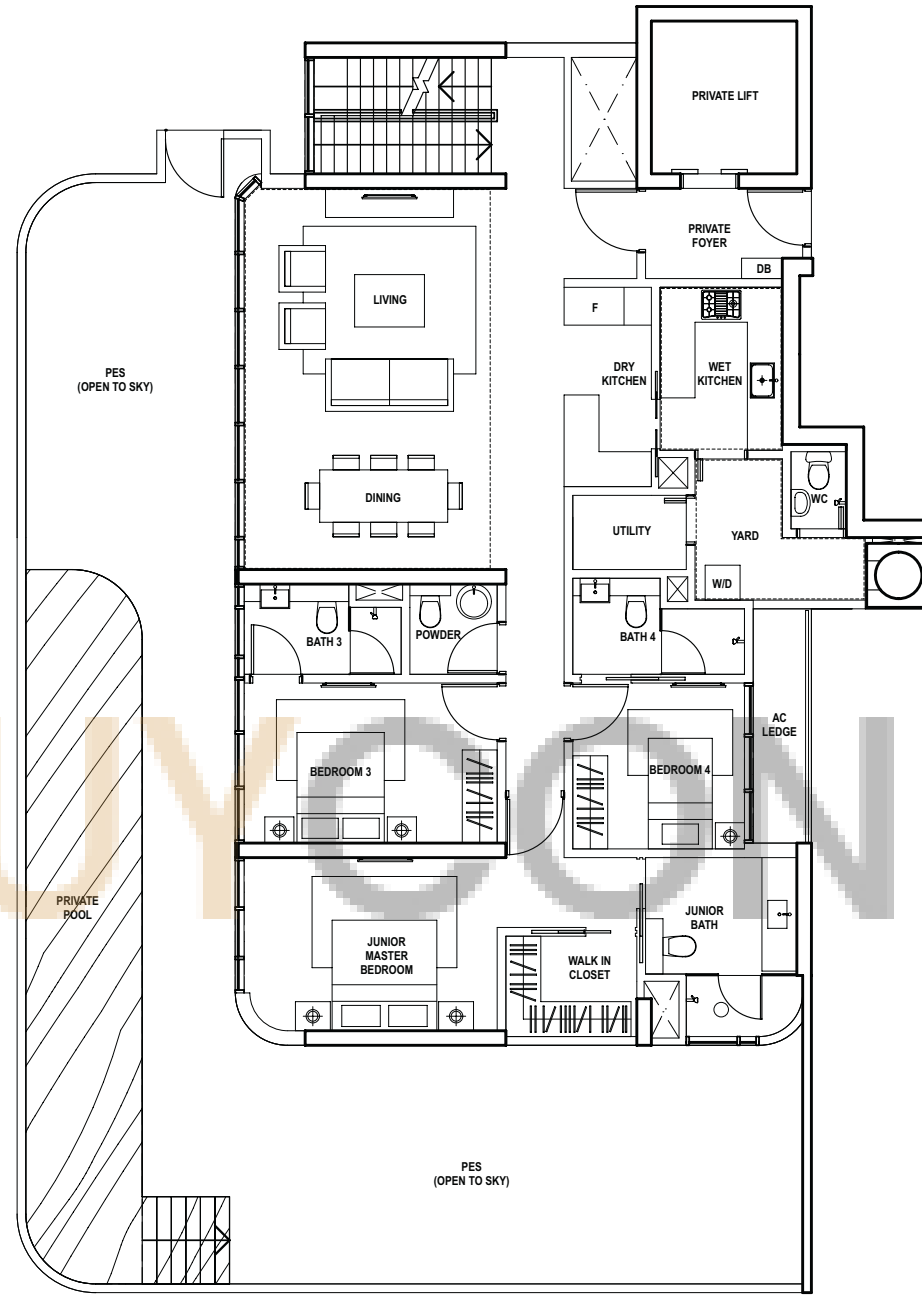
# Grand Villa 2

6 Bedroom  
481 sq.m. (5,177 sq.ft.)

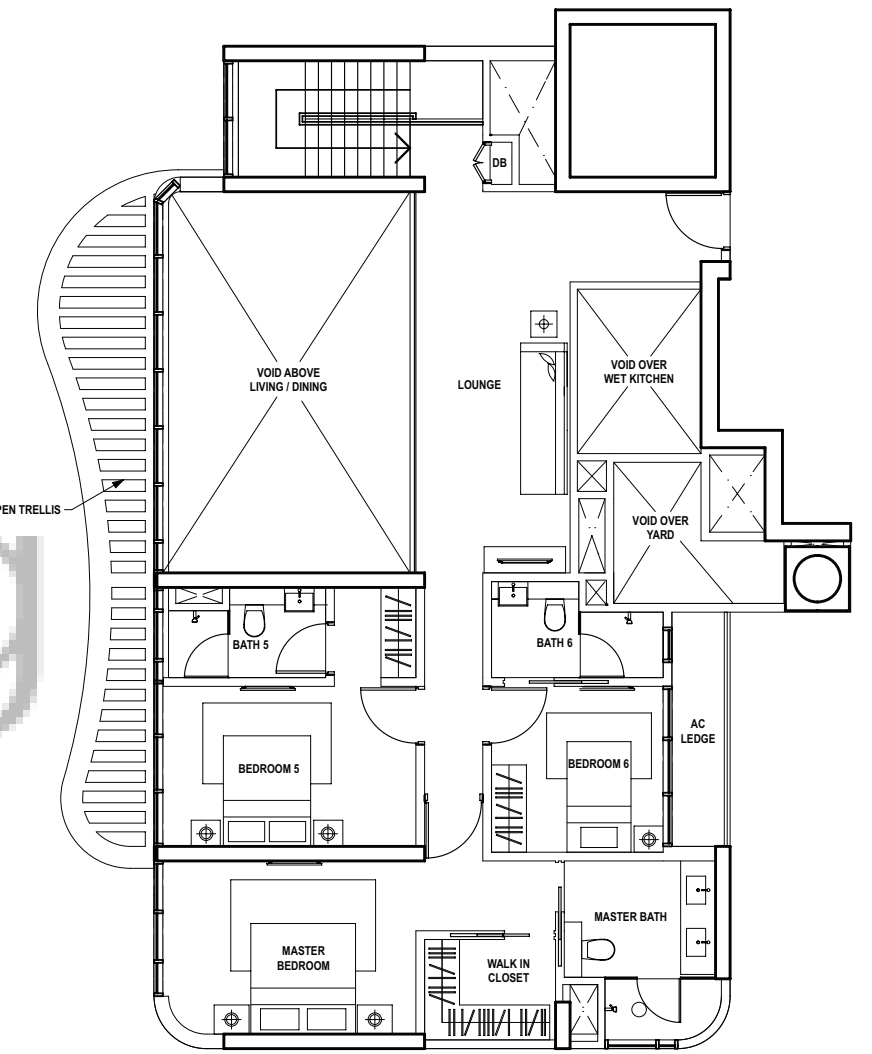
#01-01



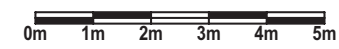
BASEMENT LEVEL



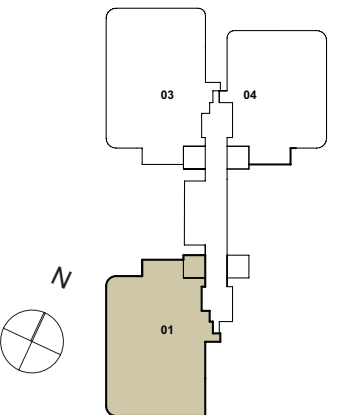
LOWER LEVEL  
(dotted line denotes double height ceiling space)



UPPER LEVEL



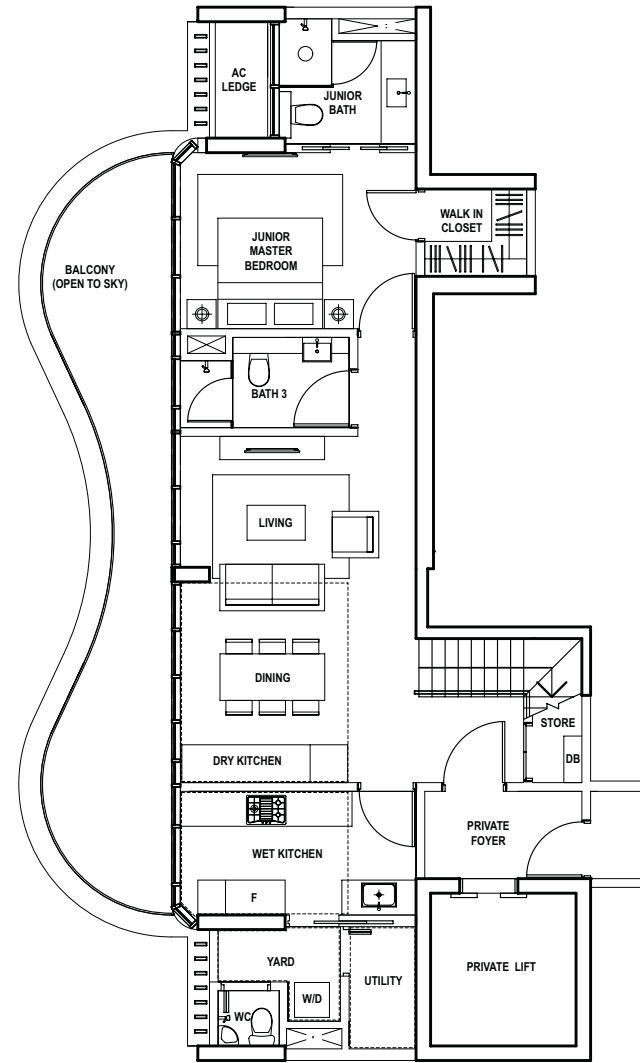
All plans are not to scale and are subject to change as may be approved by authorities.  
All floor areas are approximate only and are subject to final survey.



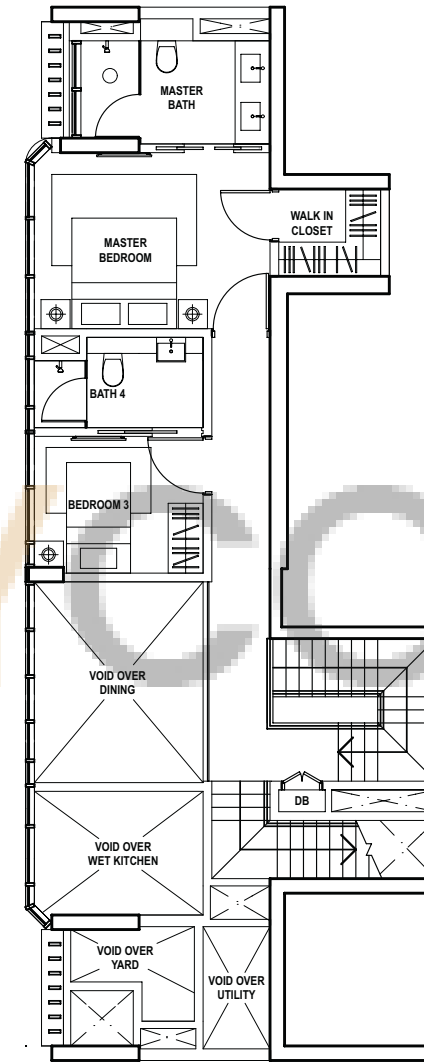
# Penthouse 1

3 Bedroom  
309 sq.m. (3,326 sq.ft.)

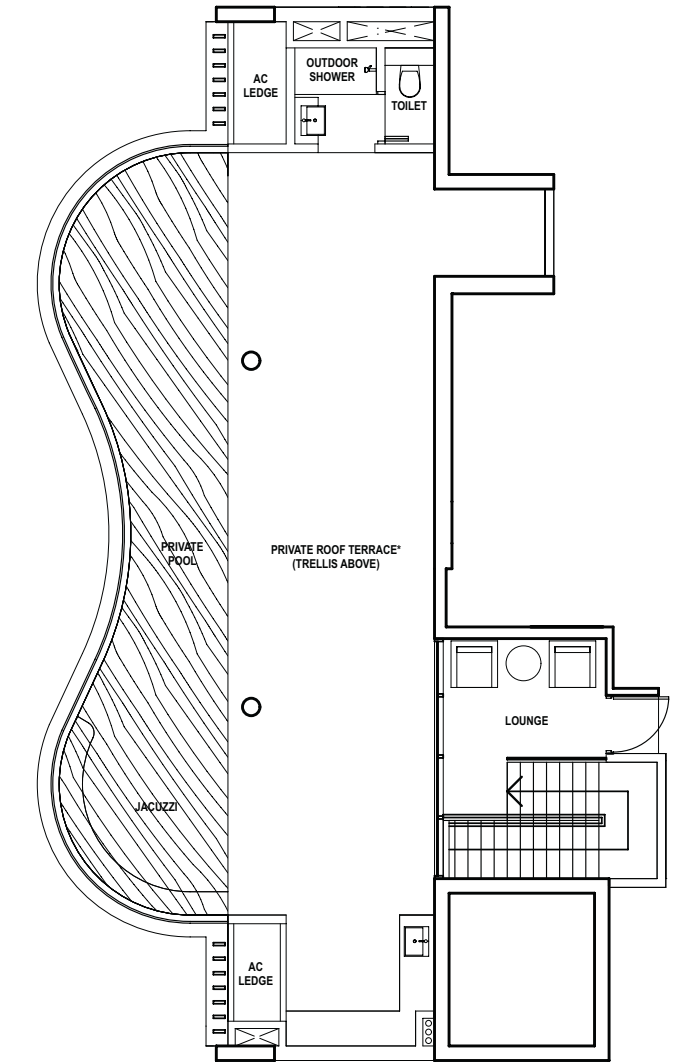
#20-02



LOWER LEVEL  
(dotted line denotes double height ceiling space)



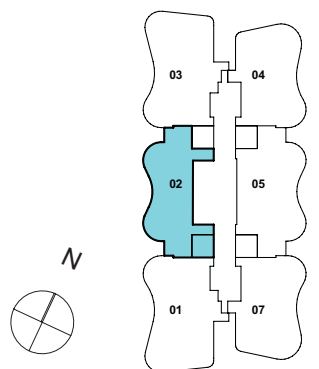
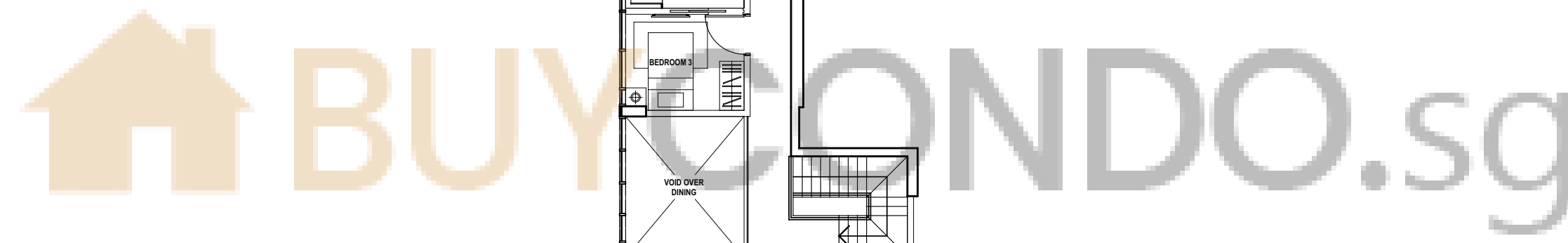
UPPER LEVEL



ROOF LEVEL  
\* - OPEN TO SKY



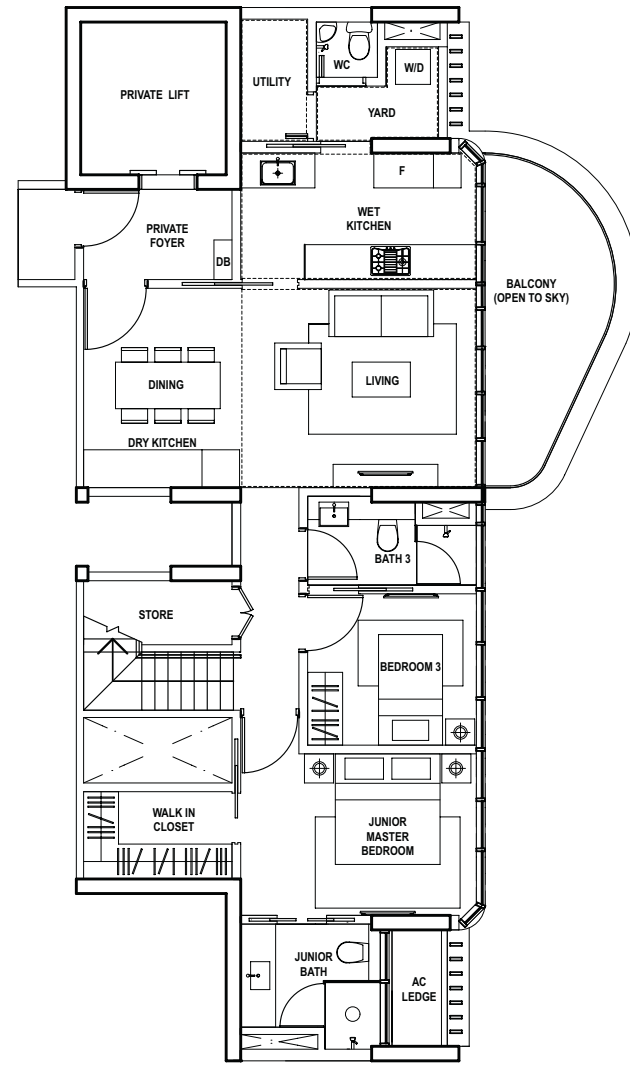
All plans are not to scale and are subject to change as may be approved by authorities.  
All floor areas are approximate only and are subject to final survey.



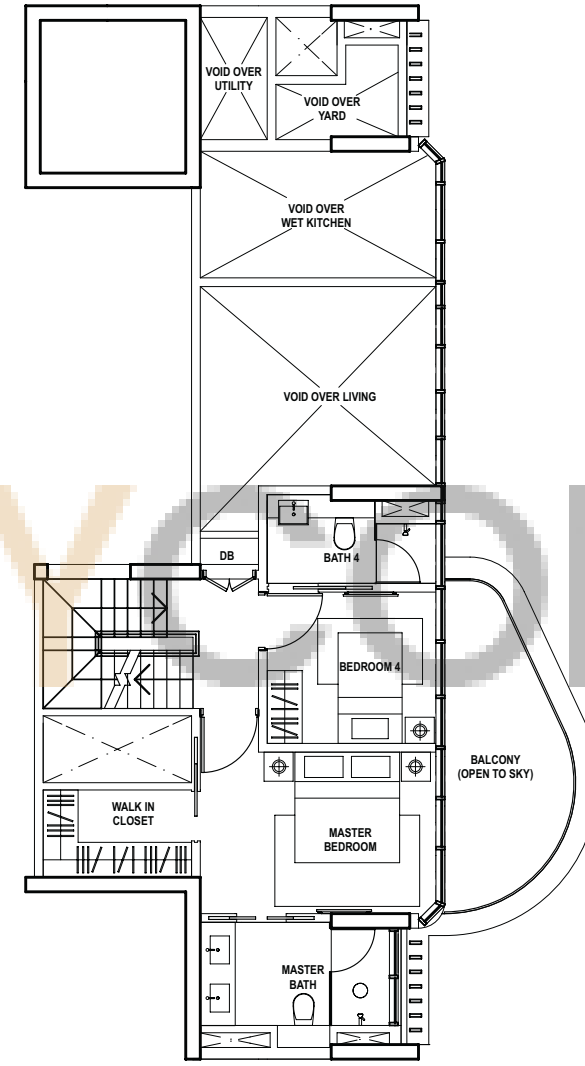
# Penthouse 2

4 Bedroom  
311 sq.m. (3,348 sq.ft.)

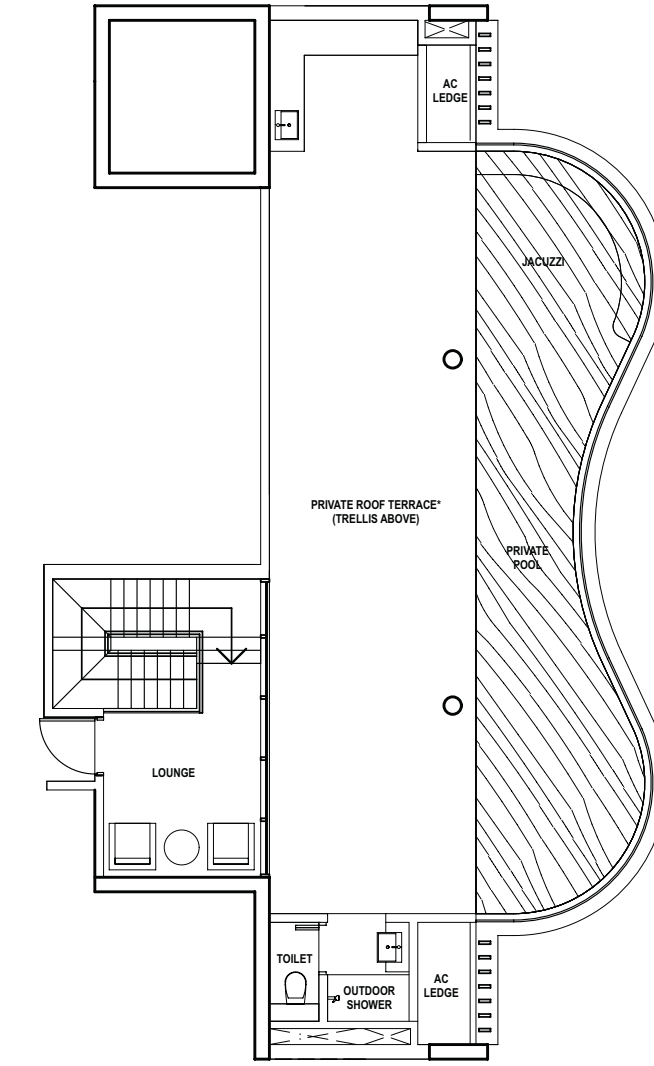
#20-05



LOWER LEVEL  
(dotted line denotes double height ceiling space)



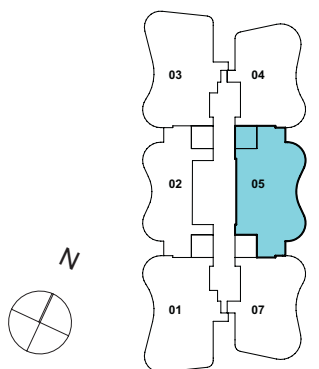
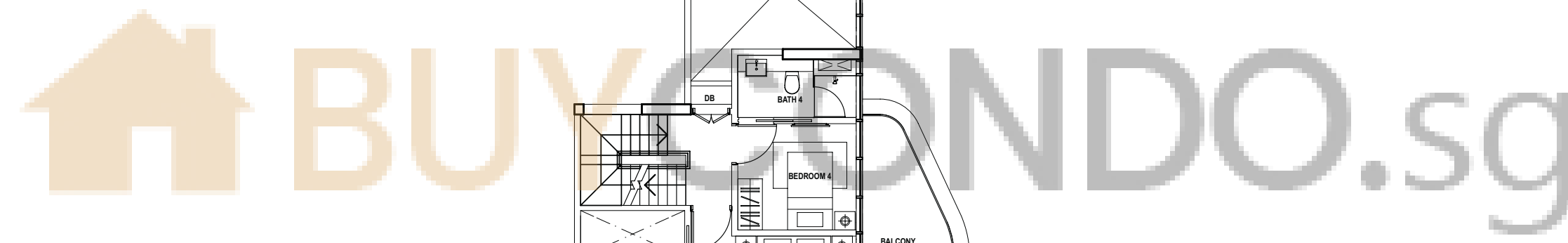
UPPER LEVEL



ROOF LEVEL  
\* - OPEN TO SKY



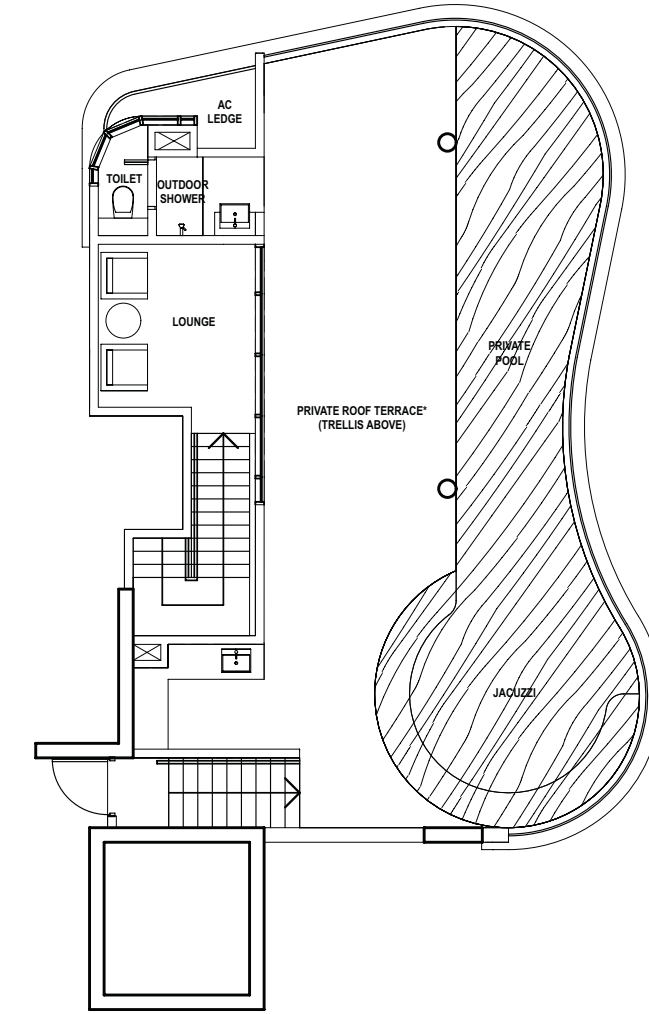
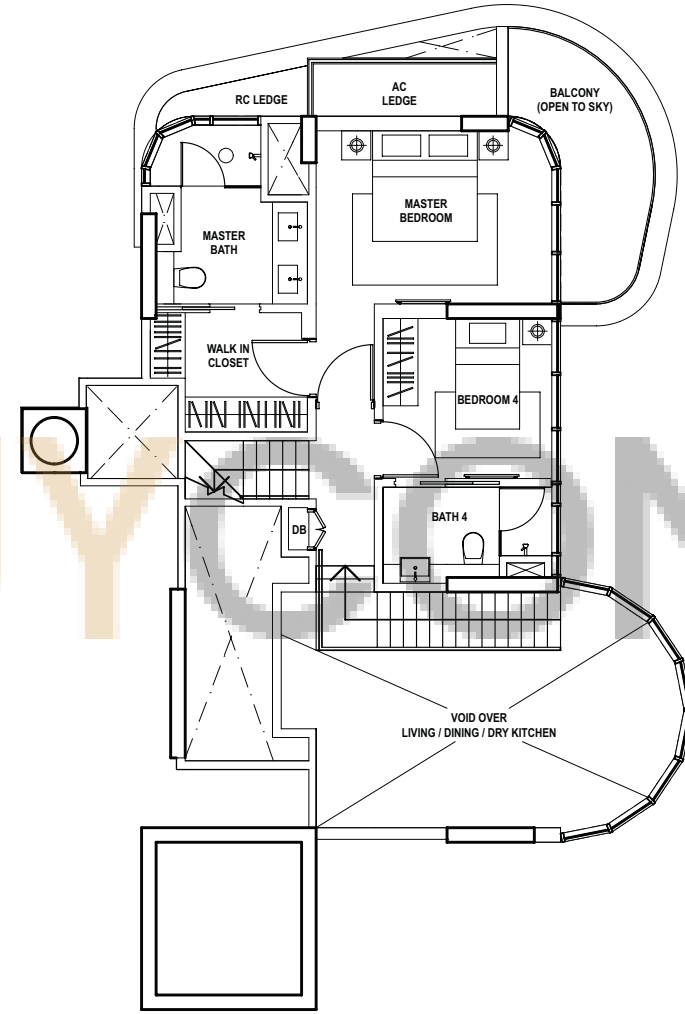
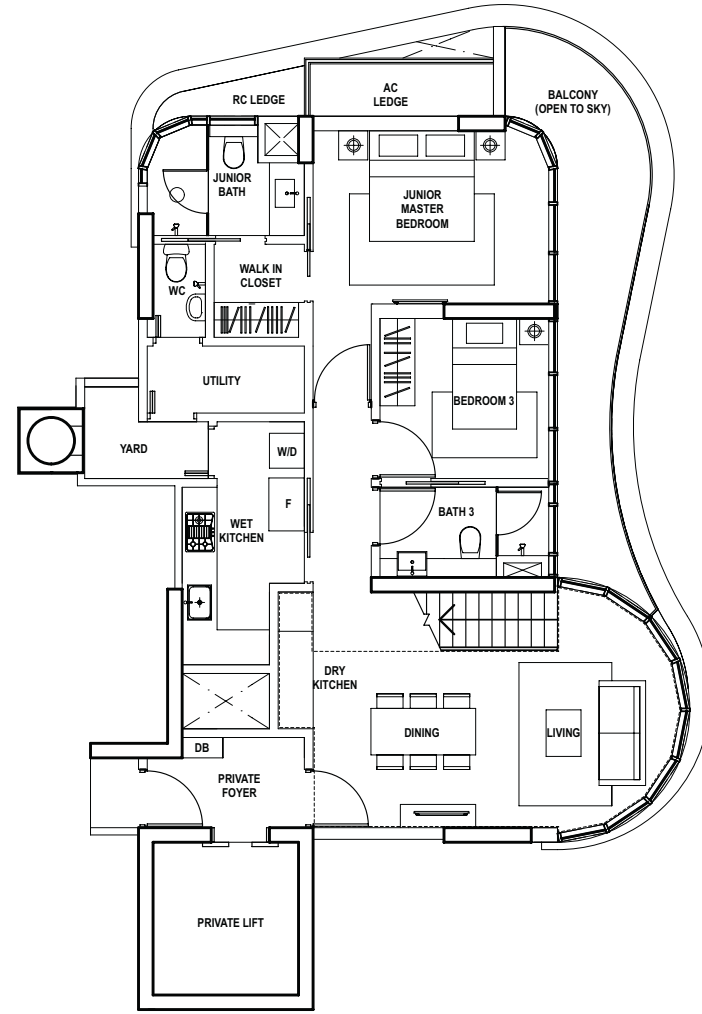
All plans are not to scale and are subject to change as may be approved by authorities.  
All floor areas are approximate only and are subject to final survey.



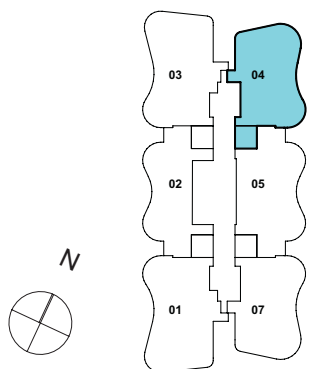
# Penthouse 3

4 Bedroom  
308 sq.m. (3,315 sq.ft.)

#20-04



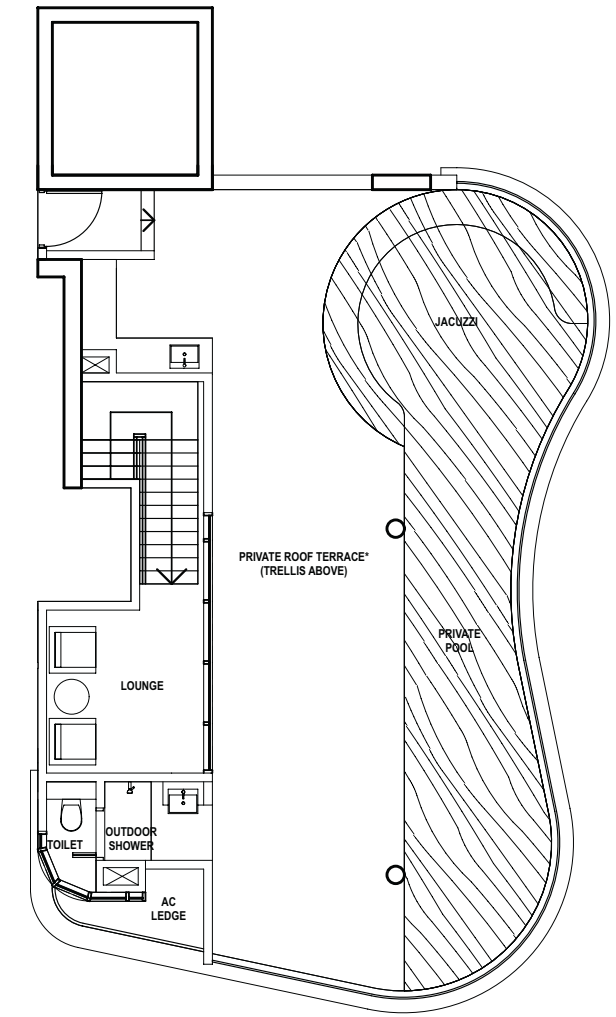
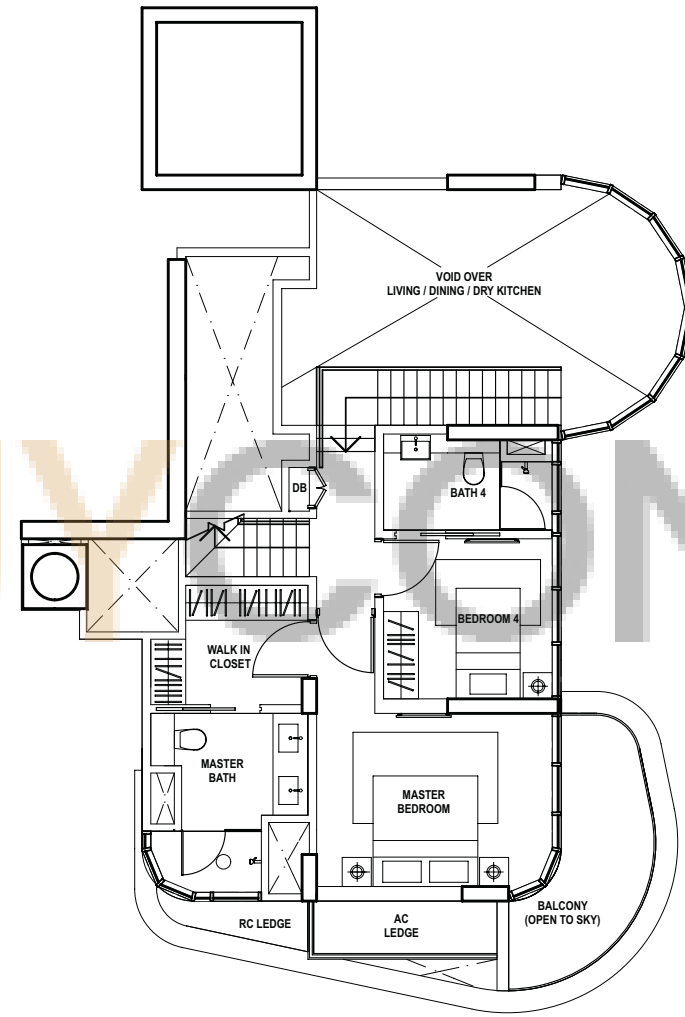
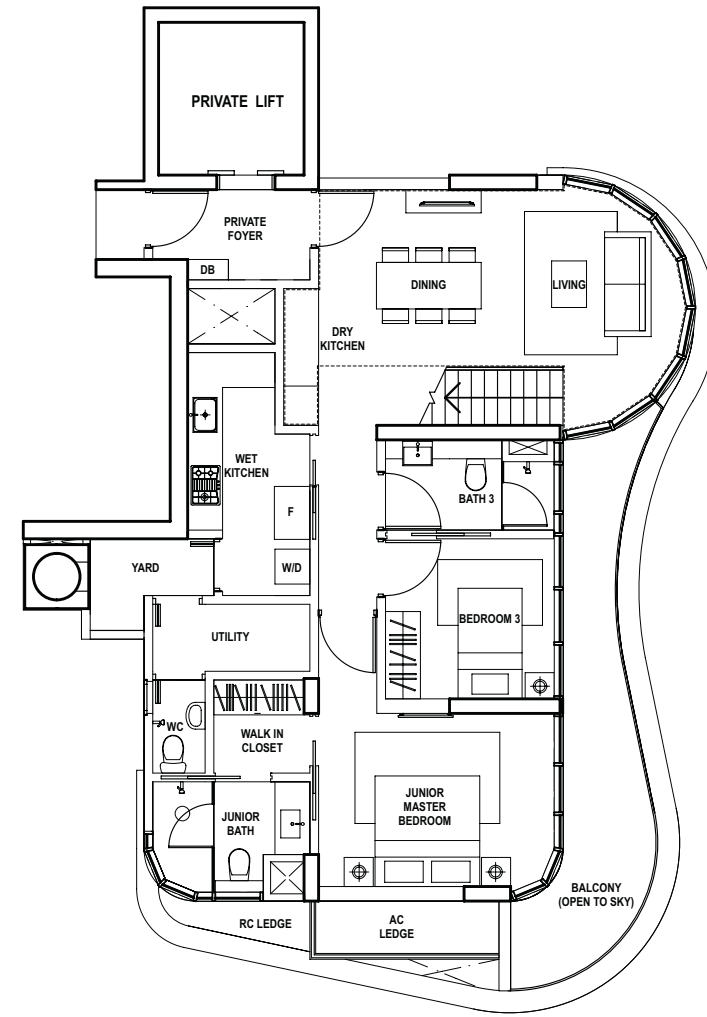
All plans are not to scale and are subject to change as may be approved by authorities.  
All floor areas are approximate only and are subject to final survey.



# Penthouse 4

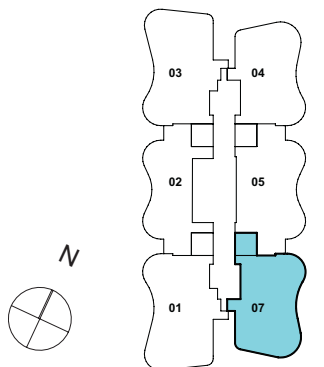
4 Bedroom  
308 sq.m. (3,315 sq.ft.)

#20-07



All plans are not to scale and are subject to change as may be approved by authorities.  
All floor areas are approximate only and are subject to final survey.

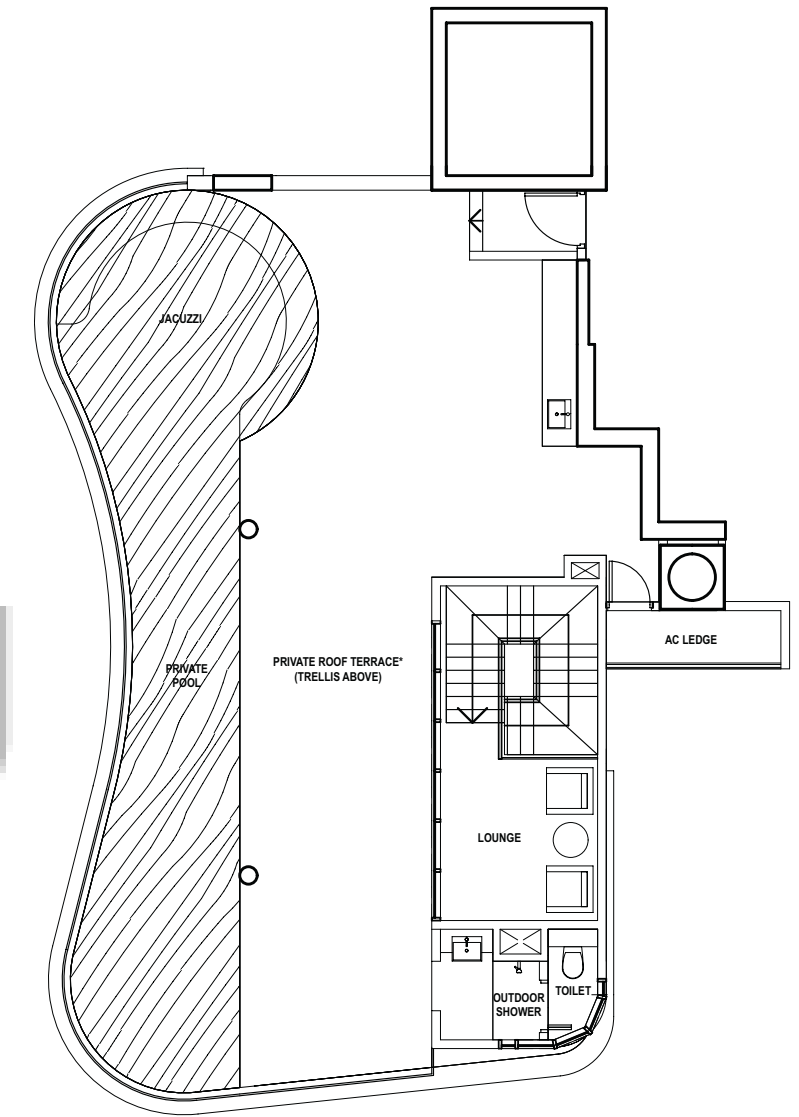
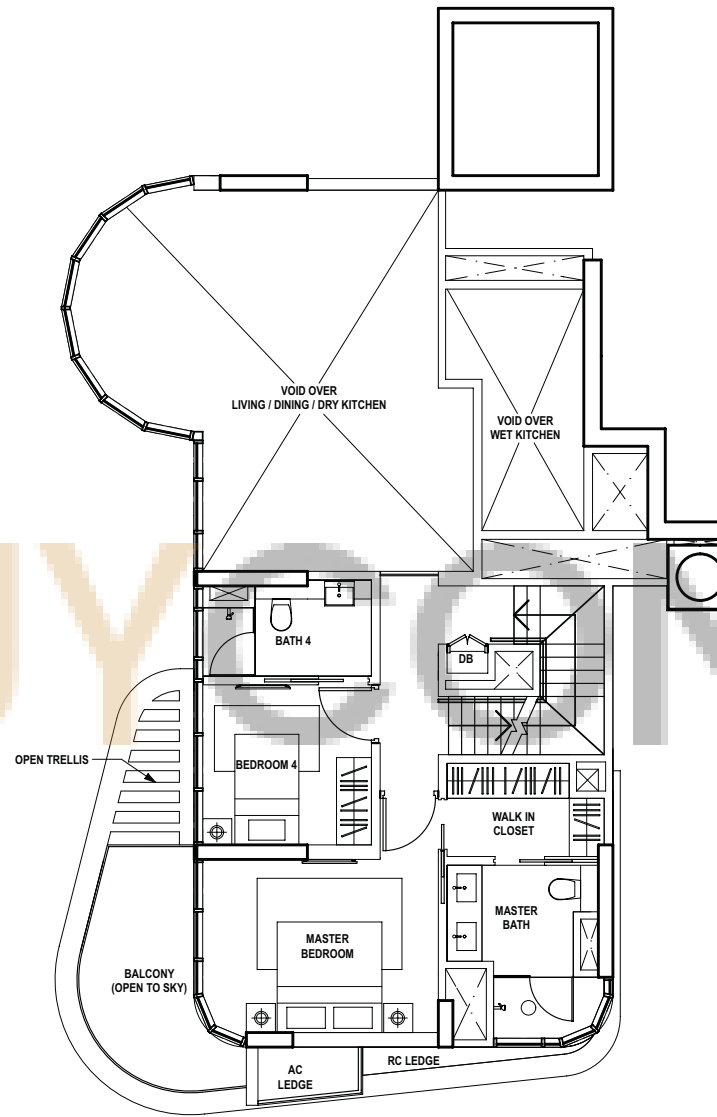
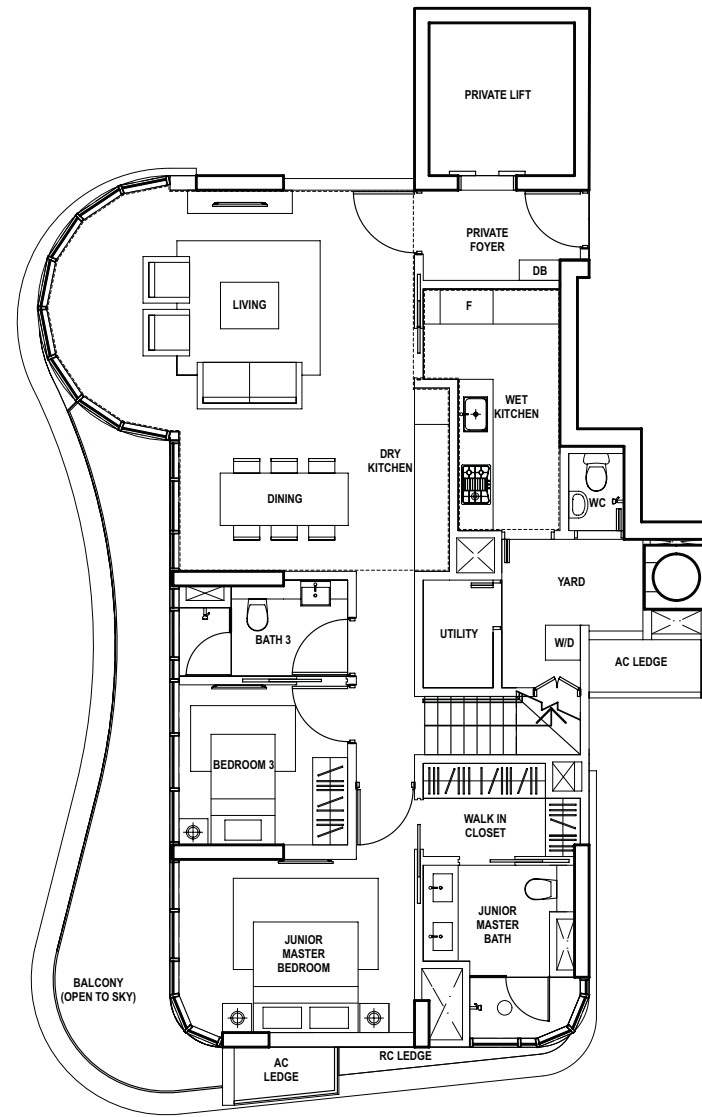
BUY CONDO.SG



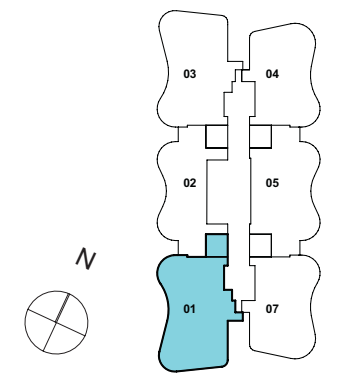
# Penthouse 5

4 Bedroom  
381 sq.m. (4,101 sq.ft.)

#20-01



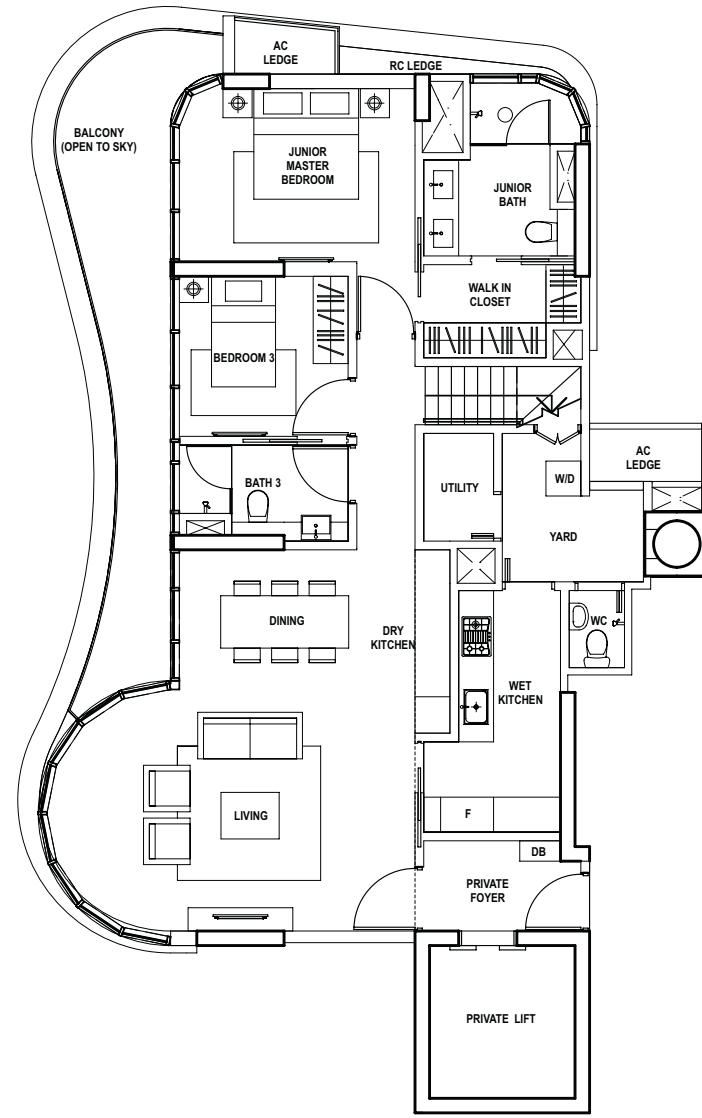
All plans are not to scale and are subject to change as may be approved by authorities.  
All floor areas are approximate only and are subject to final survey.



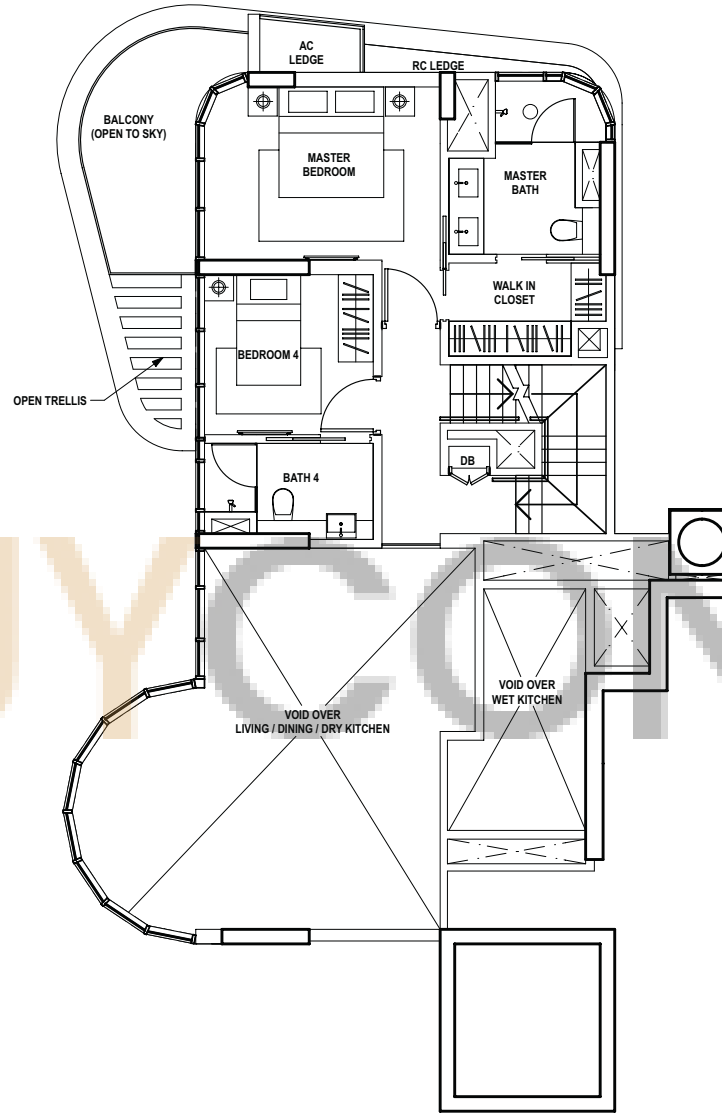
# Penthouse 6

4 Bedroom  
382 sq.m. (4,112 sq.ft.)

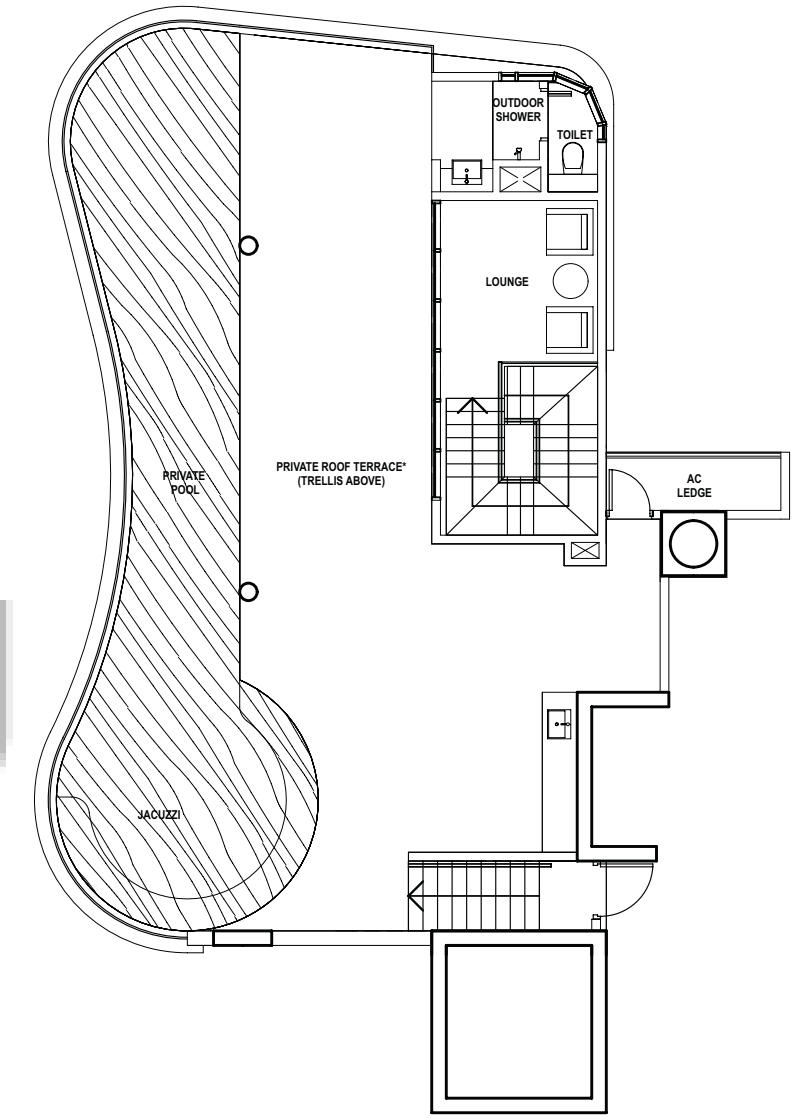
#20-03



LOWER LEVEL  
(dotted line denotes double height ceiling space)



UPPER LEVEL



ROOF LEVEL  
\* - OPEN TO SKY



All plans are not to scale and are subject to change as may be approved by authorities.  
All floor areas are approximate only and are subject to final survey.

