



2 Bedroom Deluxe

TYPE B1-P

73 SQ M | 786 SQ FT

TOWER 35 | #01-11

TYPE B1

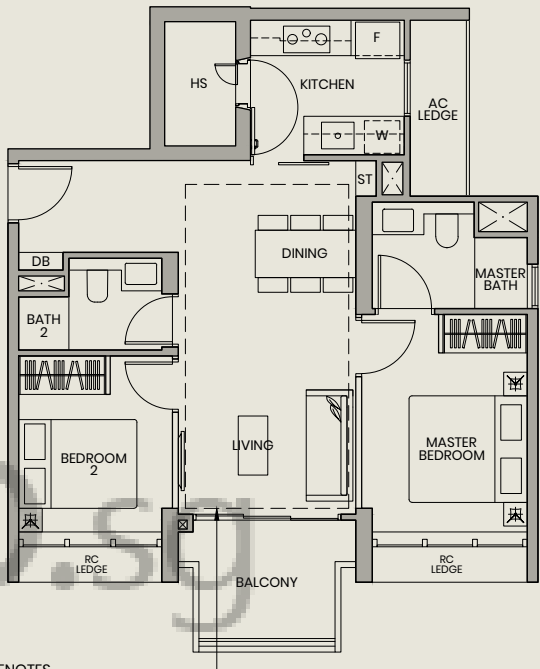
73 SQ M | 786 SQ FT

TOWER 35 | #02-11 TO #13-11

TYPE B1-PH

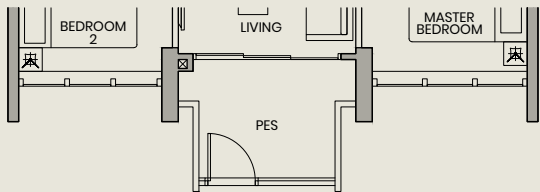
92 SQ M | 990 SQ FT
(INCLUSIVE OF 19 SQ M STRATA VOID OVER LIVING/DINING)

TOWER 35 | #14-11



DOTTED LINE DENOTES
STRATA VOID AREA
FOR TYPE B1-PH

TYPE B1-P

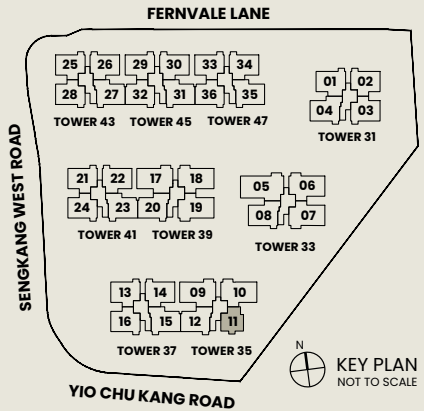


0 1 3 5M

Legend

Wall not allowed to be hacked or altered

| | | | |
|----|--------------------|----|-------------------|
| F | Fridge | HS | Household Shelter |
| W | Washer | ST | Storage |
| DB | Distribution Board | | |

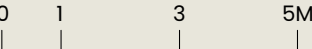
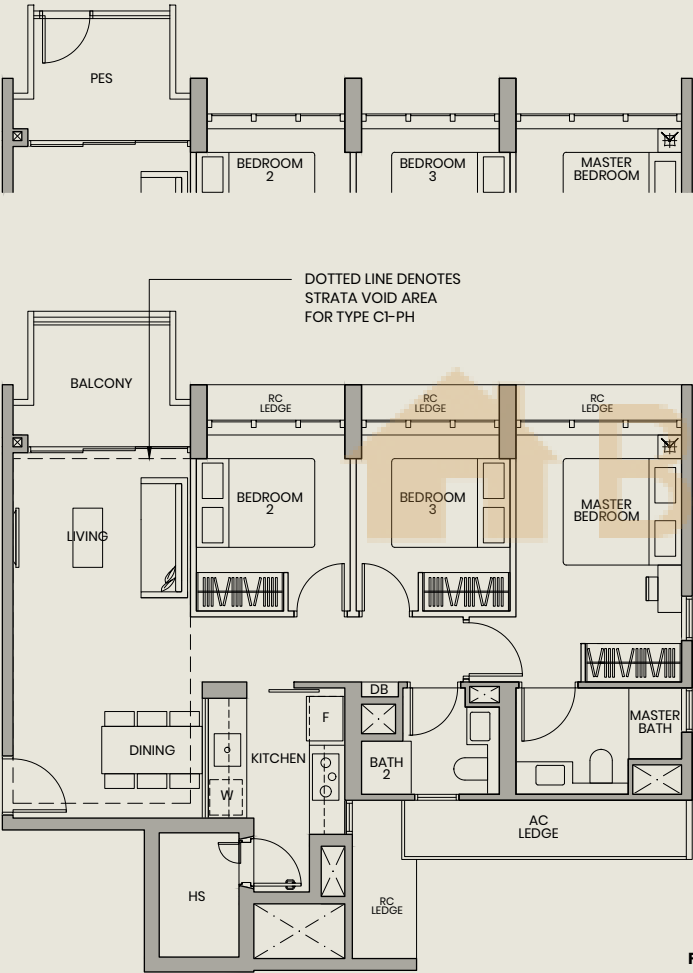


Area includes air conditioner (AC) ledge, balcony, PES and strata void where applicable. The above plans are subject to change as may be approved by the relevant authorities. All floor plans are approximate measurements only and are subject to government re-survey. The balcony shall not be enclosed unless with the approved balcony screen. The installation and cost of the screen shall be borne by the purchaser.

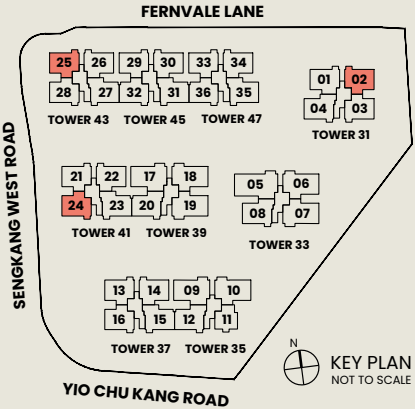
3 Bedroom Deluxe

| | | |
|---|--|---|
| TYPE C1-P 89 SQ M 958 SQ FT | TYPE C1 89 SQ M 958 SQ FT | TYPE C1-PH 109 SQ M 1173 SQ FT (INCLUSIVE OF 20 SQ M STRATA VOID OVER LIVING/DINING) |
| TOWER 41 #01-24 TOWER 43 #01-25* | TOWER 31 #03-02 TO #13-02 TOWER 41 #02-24 TO #13-24 TOWER 43 #02-25* TO #13-25* | TOWER 31 #14-02 TOWER 41 #14-24 TOWER 43 #14-25* |

TYPE C1-P



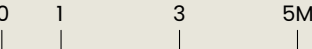
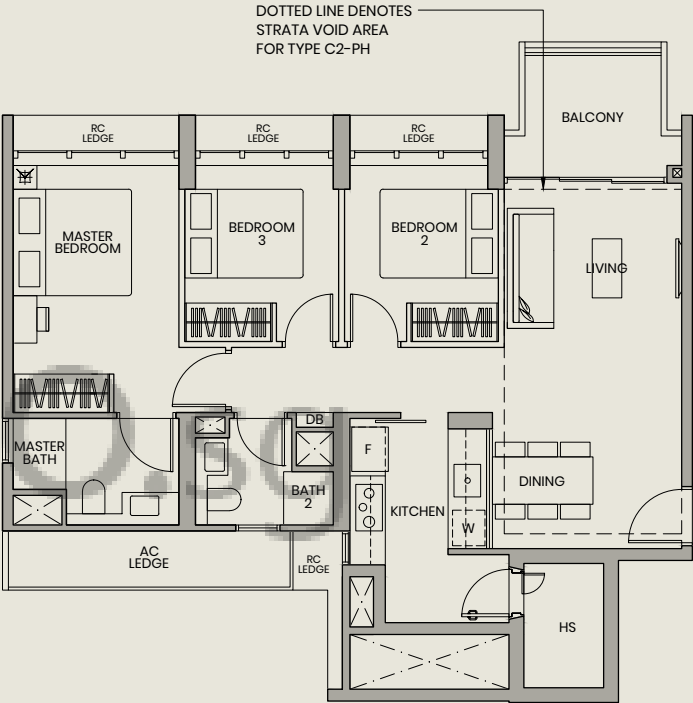
- Legend**
- Wall not allowed to be hacked or altered
 - * Mirrored Unit
 - F Fridge
 - W Washer
 - DB Distribution Board
 - HS Household Shelter



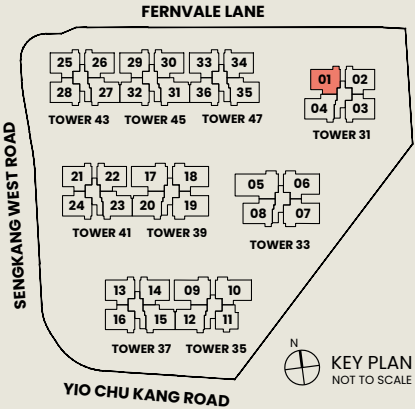
Area includes air conditioner (AC) ledge, balcony, PES and strata void where applicable. The above plans are subject to change as may be approved by the relevant authorities. All floor plans are approximate measurements only and are subject to government re-survey. The balcony shall not be enclosed unless with the approved balcony screen. The installation and cost of the screen shall be borne by the purchaser.

3 Bedroom Deluxe

| | |
|---------------------------------------|---|
| TYPE C2 91 SQ M 980 SQ FT | TYPE C2-PH 111 SQ M 1195 SQ FT (INCLUSIVE OF 20 SQ M STRATA VOID OVER LIVING/DINING) |
| TOWER 31 #03-01 TO #13-01 | TOWER 31 #14-01 |



- Legend**
- Wall not allowed to be hacked or altered
 - F Fridge
 - W Washer
 - DB Distribution Board
 - HS Household Shelter



Area includes air conditioner (AC) ledge, balcony, PES and strata void where applicable. The above plans are subject to change as may be approved by the relevant authorities. All floor plans are approximate measurements only and are subject to government re-survey. The balcony shall not be enclosed unless with the approved balcony screen. The installation and cost of the screen shall be borne by the purchaser.

3 Bedroom Premium

- TYPE C3-P**

93 SQ M | 1001 SQ FT

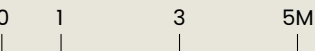
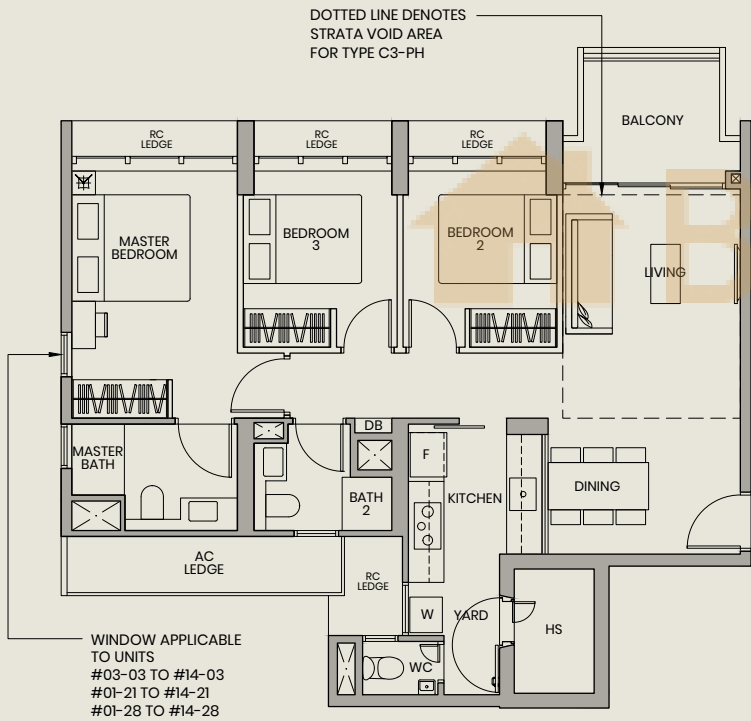
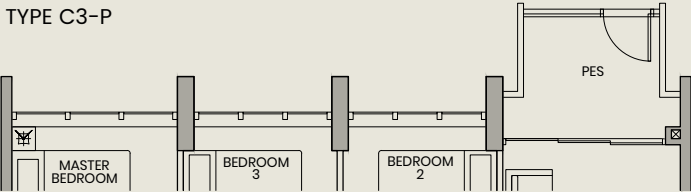
TOWER 41 | #01-21
TOWER 43 | #01-28*
TOWER 45 | #01-29
TOWER 47 | #01-33
- TYPE C3**

93 SQ M | 1001 SQ FT

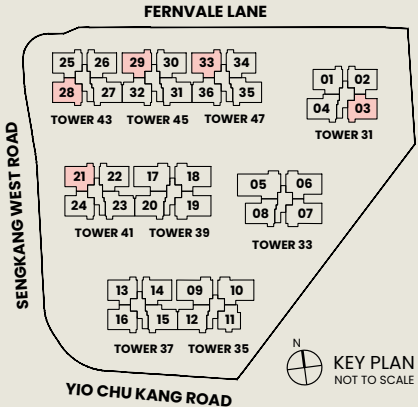
TOWER 31 | #03-03 TO #13-03
TOWER 41 | #02-21 TO #13-21
TOWER 43 | #02-28* TO #13-28*
TOWER 45 | #02-29 TO #13-29
TOWER 47 | #02-33 TO #13-33
- TYPE C3-PH**

106 SQ M | 1141 SQ FT
(INCLUSIVE OF 13 SQ M STRATA VOID OVER LIVING)

TOWER 31 | #14-03
TOWER 41 | #14-21
TOWER 43 | #14-28*
TOWER 45 | #14-29
TOWER 47 | #14-33



- Legend**
- Wall not allowed to be hacked or altered
 - * Mirrored Unit
 - F Fridge
 - W Washer
 - DB Distribution Board
 - HS Household Shelter



Area includes air conditioner (AC) ledge, balcony, PES and strata void where applicable. The above plans are subject to change as may be approved by the relevant authorities. All floor plans are approximate measurements only and are subject to government re-survey. The balcony shall not be enclosed unless with the approved balcony screen. The installation and cost of the screen shall be borne by the purchaser.

3 Bedroom Premium

- TYPE C3A-P**

93 SQ M | 1001 SQ FT

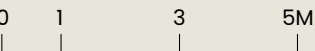
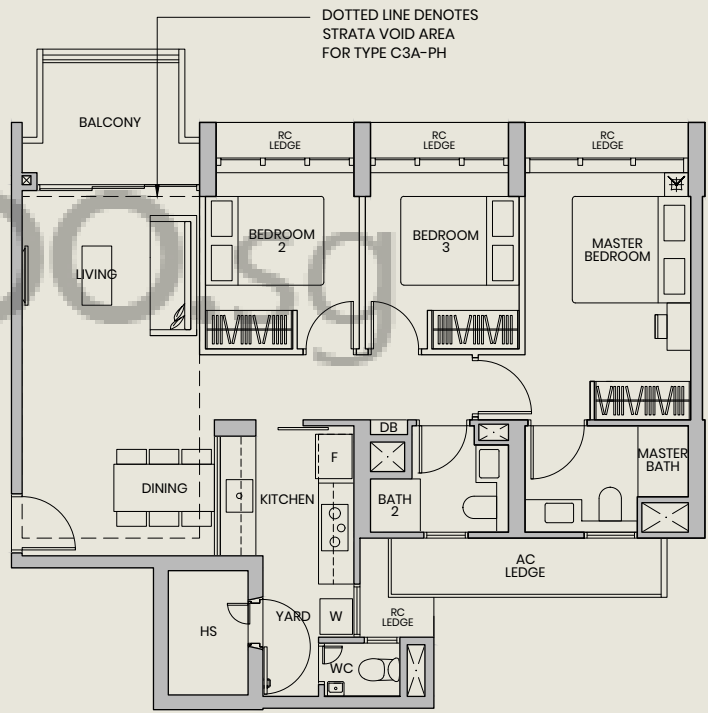
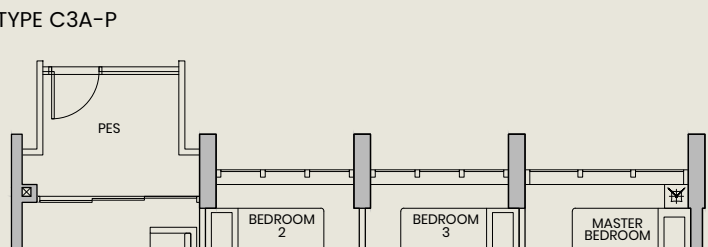
TOWER 45 | #01-32
TOWER 47 | #01-36
- TYPE C3A**

93 SQ M | 1001 SQ FT

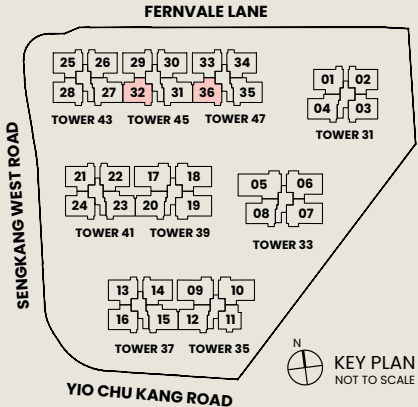
TOWER 45 | #02-32 TO #13-32
TOWER 47 | #02-36 TO #13-36
- TYPE C3A-PH**

113 SQ M | 1216 SQ FT
(INCLUSIVE OF 20 SQ M STRATA VOID OVER LIVING/DINING)

TOWER 45 | #14-32
TOWER 47 | #14-36



- Legend**
- Wall not allowed to be hacked or altered
 - F Fridge
 - W Washer
 - DB Distribution Board
 - HS Household Shelter



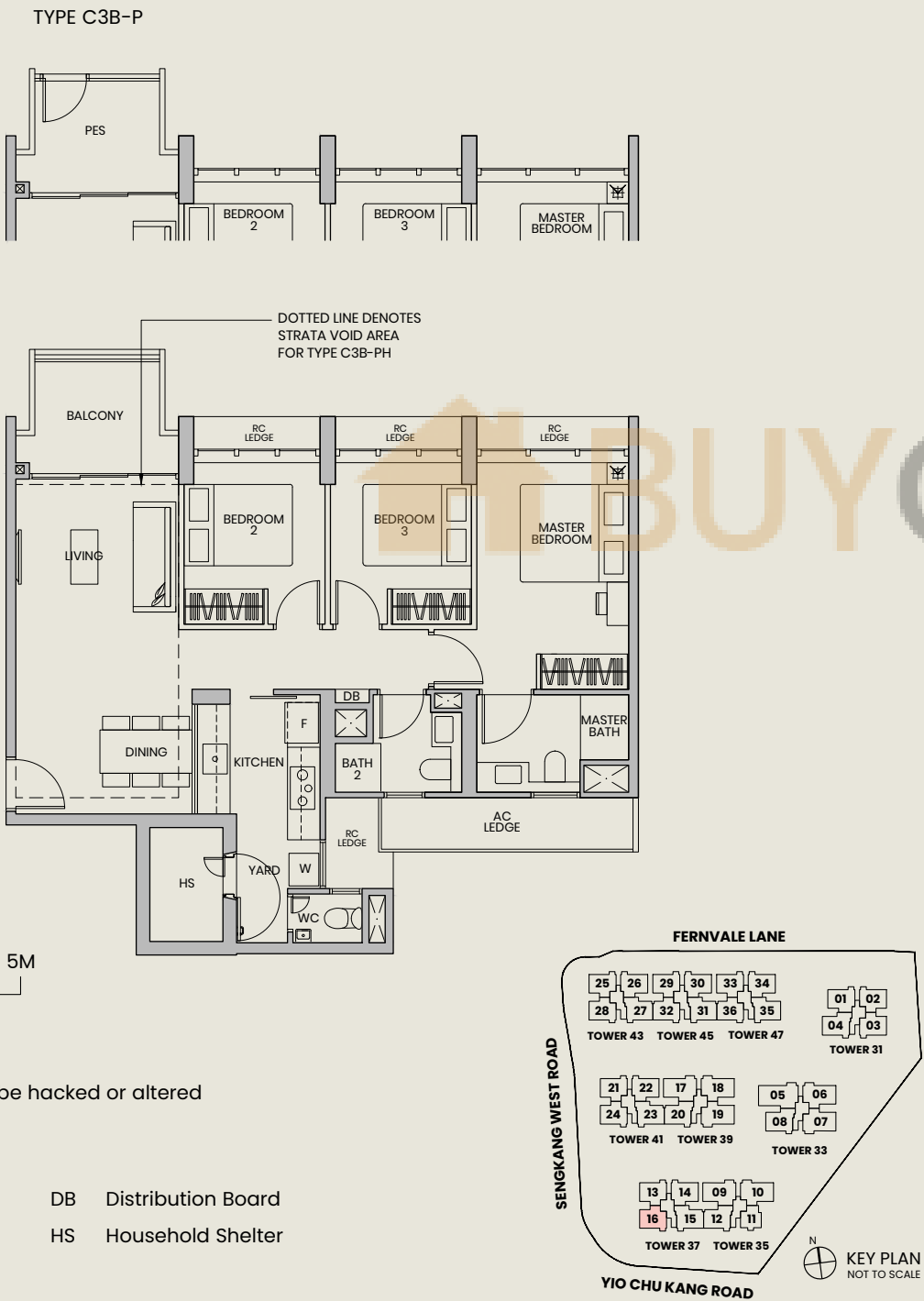
Area includes air conditioner (AC) ledge, balcony, PES and strata void where applicable. The above plans are subject to change as may be approved by the relevant authorities. All floor plans are approximate measurements only and are subject to government re-survey. The balcony shall not be enclosed unless with the approved balcony screen. The installation and cost of the screen shall be borne by the purchaser.

PARC GREENWICH



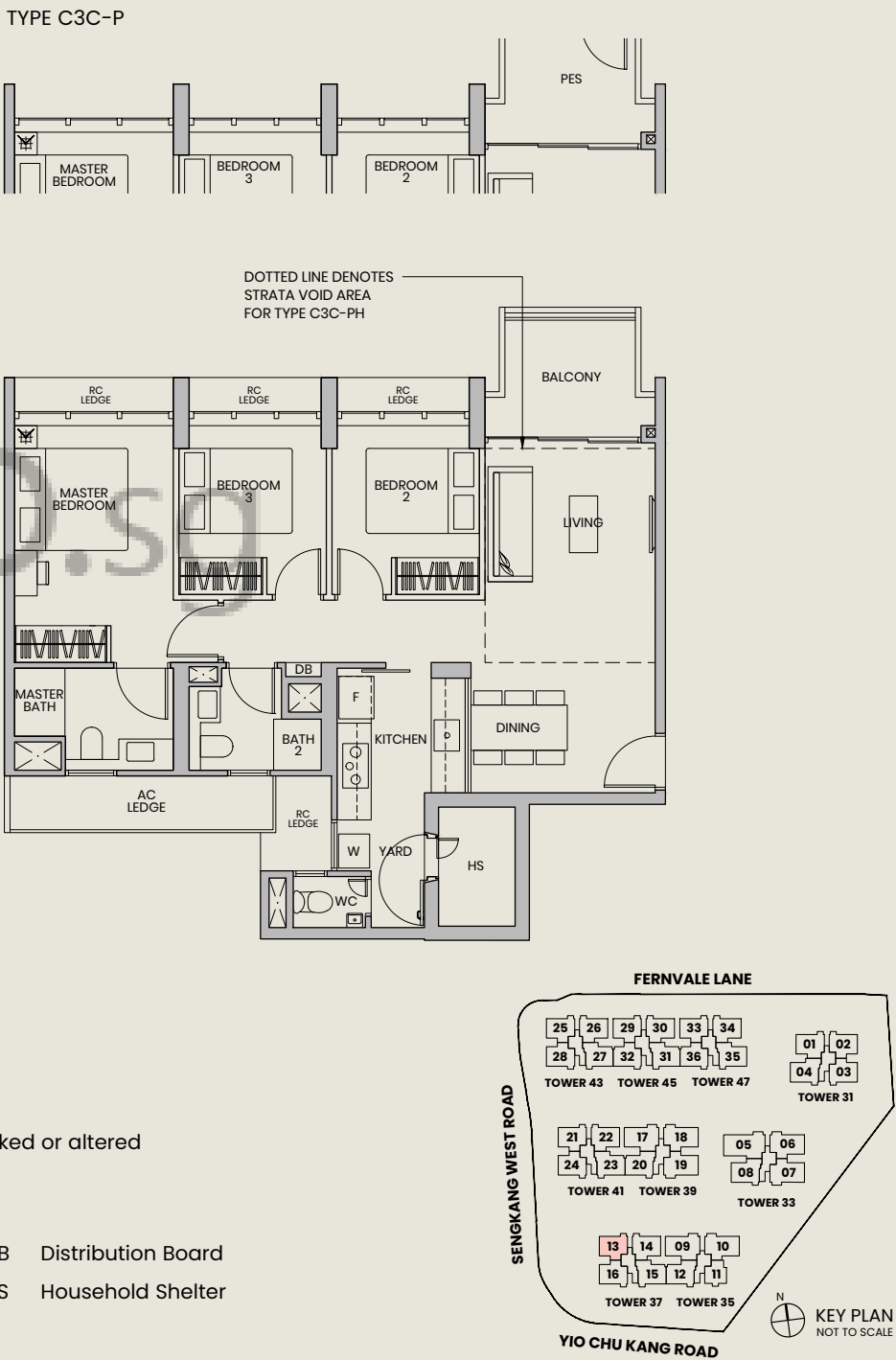
3 Bedroom Premium

| | | |
|---|---|--|
| TYPE C3B-P 93 SQ M 1001 SQ FT | TYPE C3B 93 SQ M 1001 SQ FT | TYPE C3B-PH 113 SQ M 1216 SQ FT (INCLUSIVE OF 20 SQ M STRATA VOID OVER LIVING/DINING) |
| TOWER 37 #01-16 | TOWER 37 #02-16 TO #13-16 | TOWER 37 #14-16 |



3 Bedroom Premium

| | | |
|---|---|---|
| TYPE C3C-P 93 SQ M 1001 SQ FT | TYPE C3C 93 SQ M 1001 SQ FT | TYPE C3C-PH 106 SQ M 1141 SQ FT (INCLUSIVE OF 13 SQ M STRATA VOID OVER LIVING) |
| TOWER 37 #01-13 | TOWER 37 #02-13 TO #13-13 | TOWER 37 #14-13 |

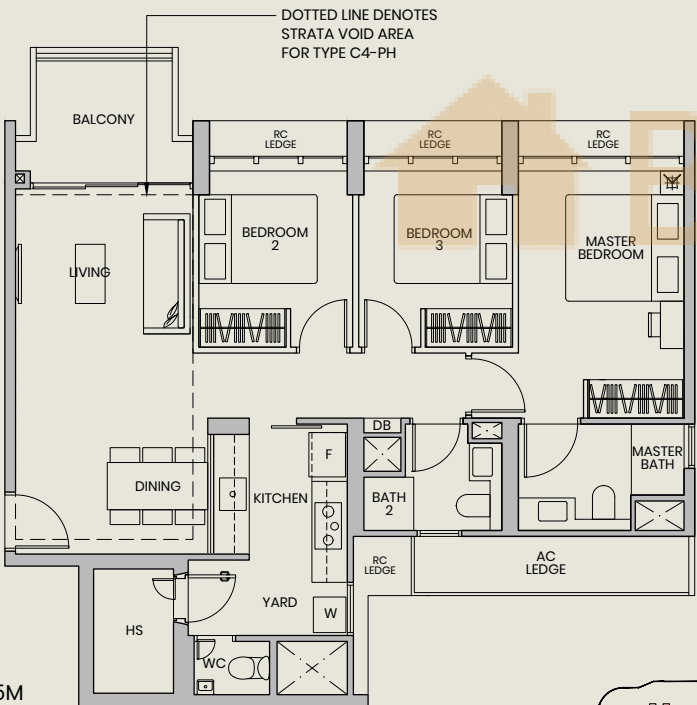
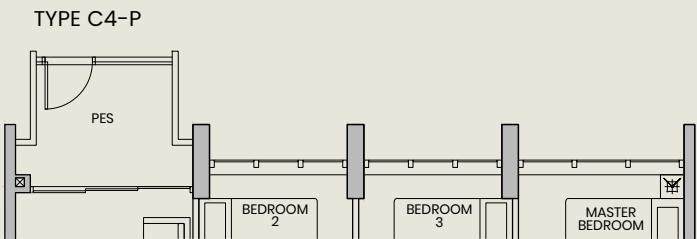


Area includes air conditioner (AC) ledge, balcony, PES and strata void where applicable. The above plans are subject to change as may be approved by the relevant authorities. All floor plans are approximate measurements only and are subject to government re-survey. The balcony shall not be enclosed unless with the approved balcony screen. The installation and cost of the screen shall be borne by the purchaser.

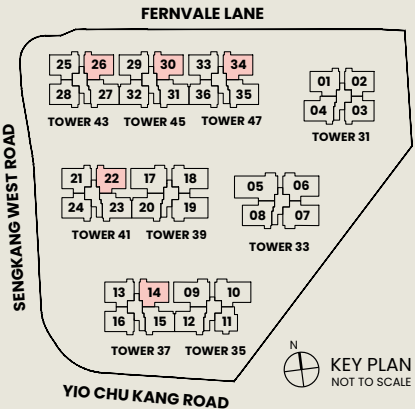
Area includes air conditioner (AC) ledge, balcony, PES and strata void where applicable. The above plans are subject to change as may be approved by the relevant authorities. All floor plans are approximate measurements only and are subject to government re-survey. The balcony shall not be enclosed unless with the approved balcony screen. The installation and cost of the screen shall be borne by the purchaser.

3 Bedroom Premium

| | | |
|---|---|---|
| TYPE C4-P 93 SQ M 1001 SQ FT | TYPE C4 93 SQ M 1001 SQ FT | TYPE C4-PH 113 SQ M 1216 SQ FT (INCLUSIVE OF 20 SQ M STRATA VOID OVER LIVING/DINING) |
| TOWER 37 #01-14 TOWER 41 #01-22 TOWER 43 #01-26 TOWER 45 #01-30 TOWER 47 #01-34 | TOWER 37 #02-14 TO #13-14 TOWER 41 #02-22 TO #13-22 TOWER 43 #02-26 TO #13-26 TOWER 45 #02-30 TO #13-30 TOWER 47 #02-34 TO #13-34 | TOWER 37 #14-14 TOWER 41 #14-22 TOWER 43 #14-26 TOWER 45 #14-30 TOWER 47 #14-34 |



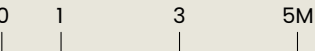
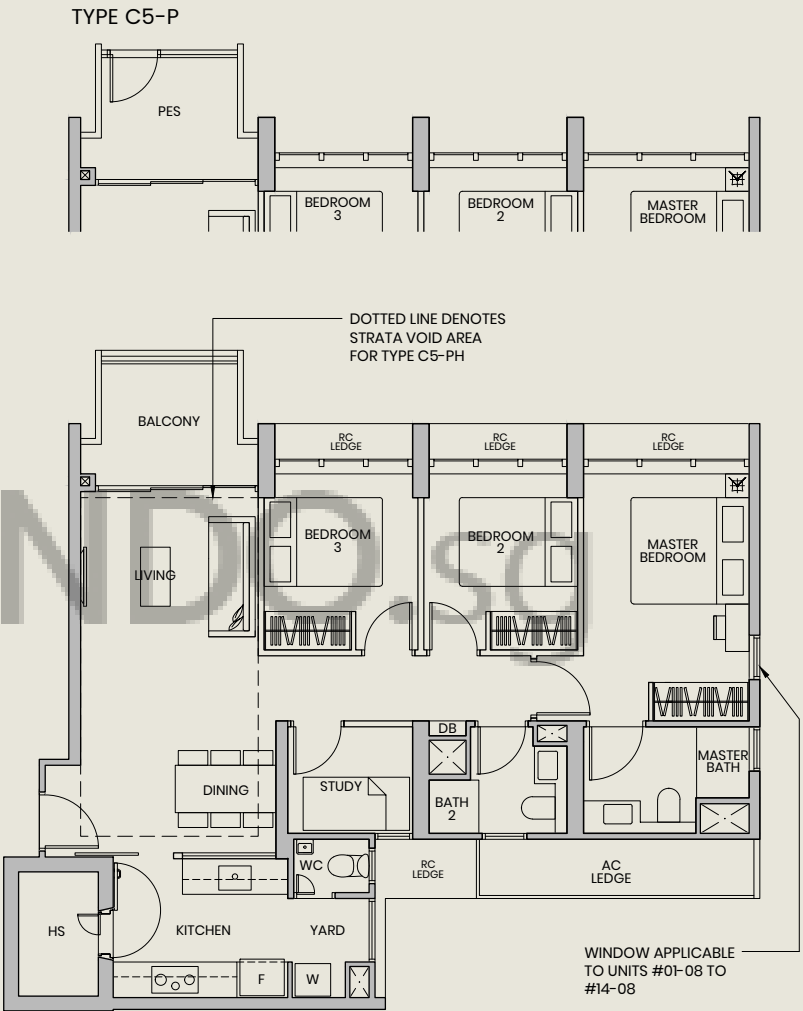
| | | | |
|--|--------|----|--------------------|
| Legend | | | |
| Wall not allowed to be hacked or altered | | | |
| F | Fridge | DB | Distribution Board |
| W | Washer | HS | Household Shelter |



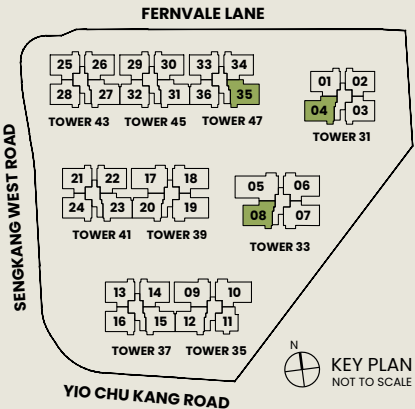
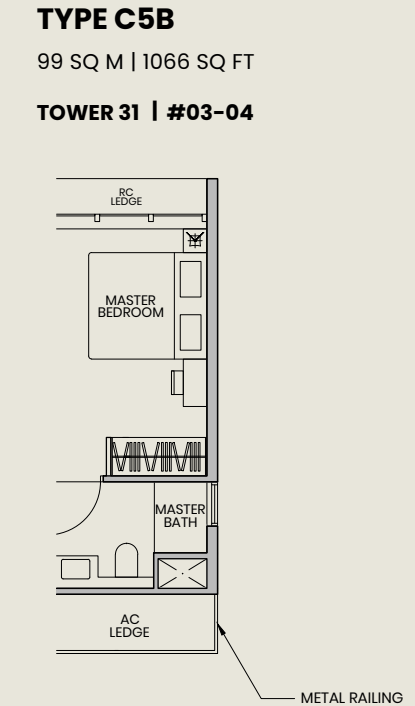
Area includes air conditioner (AC) ledge, balcony, PES and strata void where applicable. The above plans are subject to change as may be approved by the relevant authorities. All floor plans are approximate measurements only and are subject to government re-survey. The balcony shall not be enclosed unless with the approved balcony screen. The installation and cost of the screen shall be borne by the purchaser.

3 Bedroom Premium with Study

| | | |
|--|---|---|
| TYPE C5-P 99 SQ M 1066 SQ FT | TYPE C5 99 SQ M 1066 SQ FT | TYPE C5-PH 119 SQ M 1281 SQ FT (INCLUSIVE OF 20 SQ M STRATA VOID OVER LIVING/DINING) |
| TOWER 33 #01-08 TOWER 47 #01-35* | TOWER 31 #04-04 TO #13-04 TOWER 33 #02-08 TO #13-08 TOWER 47 #02-35* TO #13-35* | TOWER 31 #14-04 TOWER 33 #14-08 TOWER 47 #14-35* |



| | | | |
|--|--------|----|--------------------|
| Legend | | | |
| Wall not allowed to be hacked or altered | | | |
| * Mirrored Unit | | | |
| F | Fridge | DB | Distribution Board |
| W | Washer | HS | Household Shelter |



Area includes air conditioner (AC) ledge, balcony, PES and strata void where applicable. The above plans are subject to change as may be approved by the relevant authorities. All floor plans are approximate measurements only and are subject to government re-survey. The balcony shall not be enclosed unless with the approved balcony screen. The installation and cost of the screen shall be borne by the purchaser.

3 Bedroom Premium with Study

TYPE C5A-P

99 SQ M | 1066 SQ FT

TOWER 39 | #01-20
TOWER 41 | #01-23*
TOWER 43 | #01-27*
TOWER 45 | #01-31*

TYPE C5A

99 SQ M | 1066 SQ FT

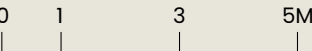
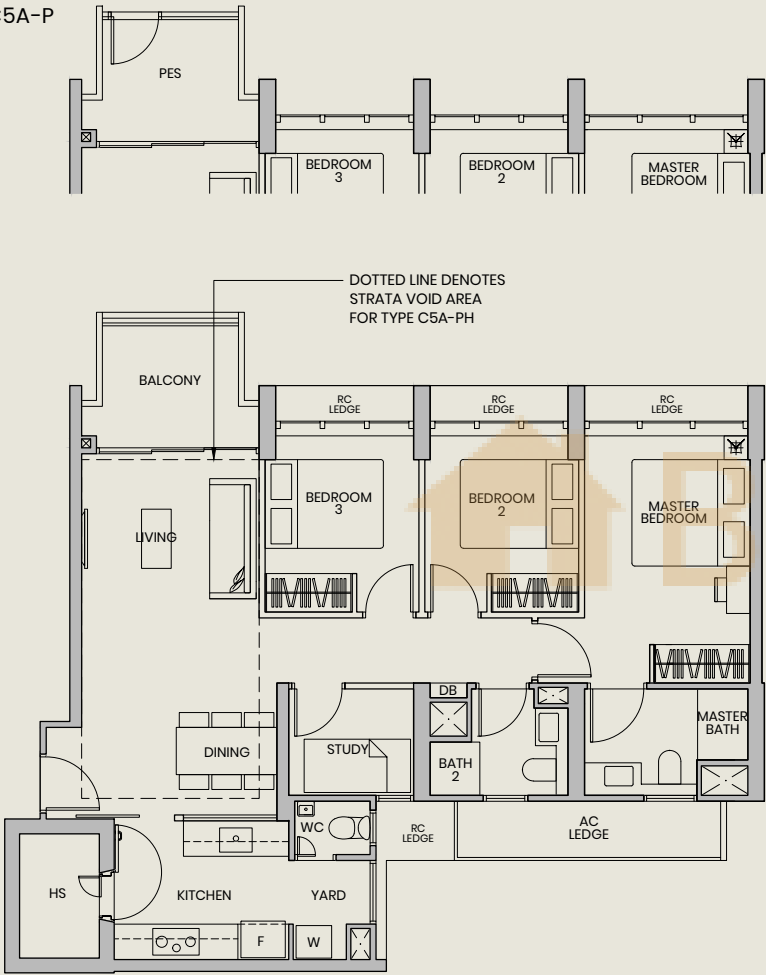
TOWER 39 | #02-20 TO #13-20
TOWER 41 | #02-23* TO #13-23*
TOWER 43 | #02-27* TO #13-27*
TOWER 45 | #02-31* TO #13-31*

TYPE C5A-PH

119 SQ M | 1281 SQ FT
(INCLUSIVE OF 20 SQ M STRATA VOID OVER LIVING/DINING)

TOWER 39 | #14-20
TOWER 41 | #14-23*
TOWER 43 | #14-27*
TOWER 45 | #14-31*

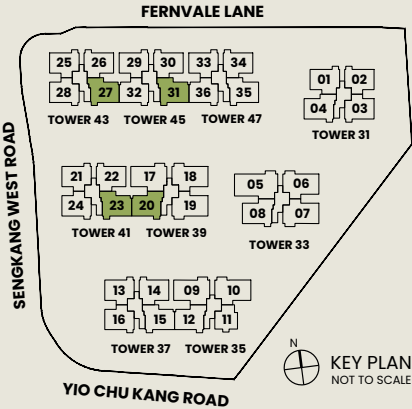
TYPE C5A-P



Legend

- Wall not allowed to be hacked or altered
- * Mirrored Unit

F Fridge DB Distribution Board
W Washer HS Household Shelter



Area includes air conditioner (AC) ledge, balcony, PES and strata void where applicable. The above plans are subject to change as may be approved by the relevant authorities. All floor plans are approximate measurements only and are subject to government re-survey. The balcony shall not be enclosed unless with the approved balcony screen. The installation and cost of the screen shall be borne by the purchaser.

3 Bedroom Premium with Study

TYPE C5C-P

99 SQ M | 1066 SQ FT

TOWER 35 | #01-12
TOWER 37 | #01-15*

TYPE C5C

99 SQ M | 1066 SQ FT

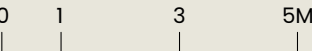
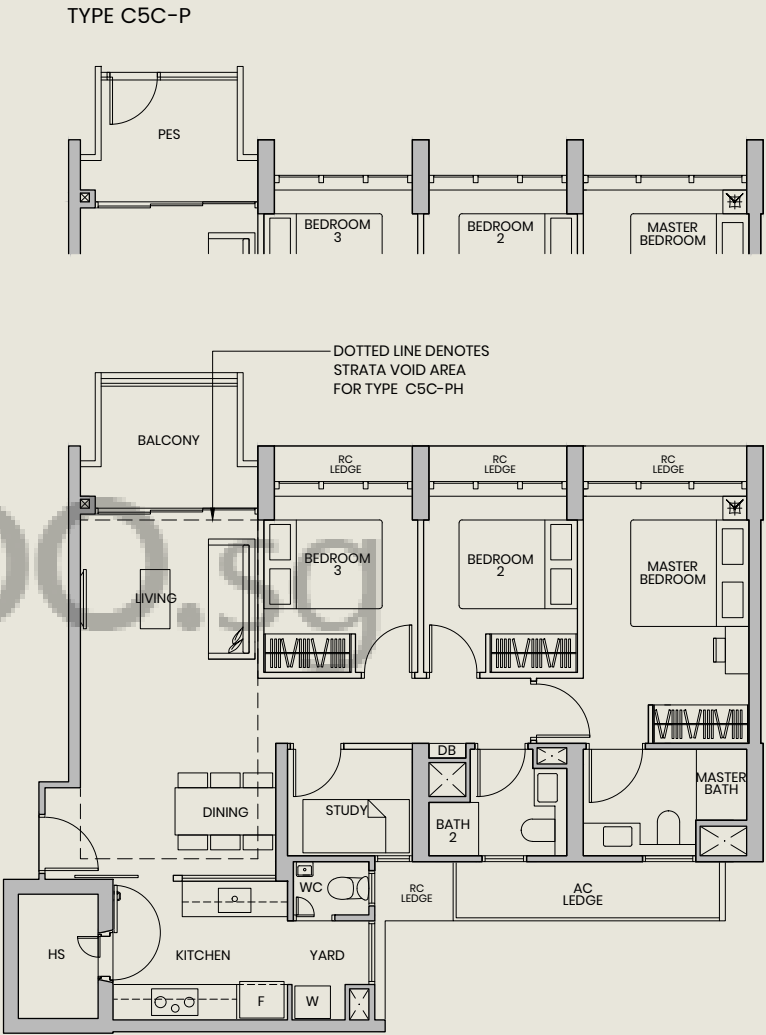
TOWER 35 | #02-12 TO #13-12
TOWER 37 | #02-15* TO #13-15*

TYPE C5C-PH

119 SQ M | 1281 SQ FT
(INCLUSIVE OF 20 SQ M STRATA VOID OVER LIVING/DINING)

TOWER 35 | #14-12
TOWER 37 | #14-15*

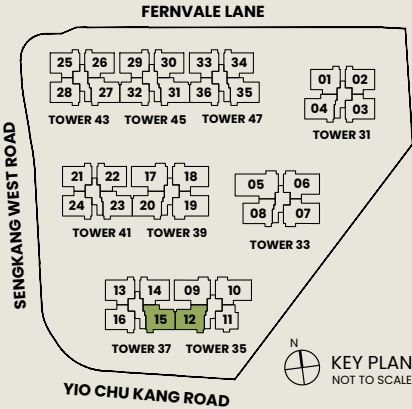
TYPE C5C-P



Legend


- Wall not allowed to be hacked or altered
- * Mirrored Unit

F Fridge DB Distribution Board
W Washer HS Household Shelter



Area includes air conditioner (AC) ledge, balcony, PES and strata void where applicable. The above plans are subject to change as may be approved by the relevant authorities. All floor plans are approximate measurements only and are subject to government re-survey. The balcony shall not be enclosed unless with the approved balcony screen. The installation and cost of the screen shall be borne by the purchaser.

Verandah

 BUYCONDO.SG

**Direct access to
balcony from kitchen**

The Verandah range of 4 and 5 bedroom units are dream homes with a kitchen that opens out to the balcony, offering extended space that can be used as an alfresco dining area or for entertainment.



4 Bedroom Premium

TYPE D1-P

112 SQ M | 1206 SQ FT

TOWER 35 | #01-09
TOWER 39 | #01-17

TYPE D1

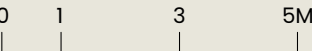
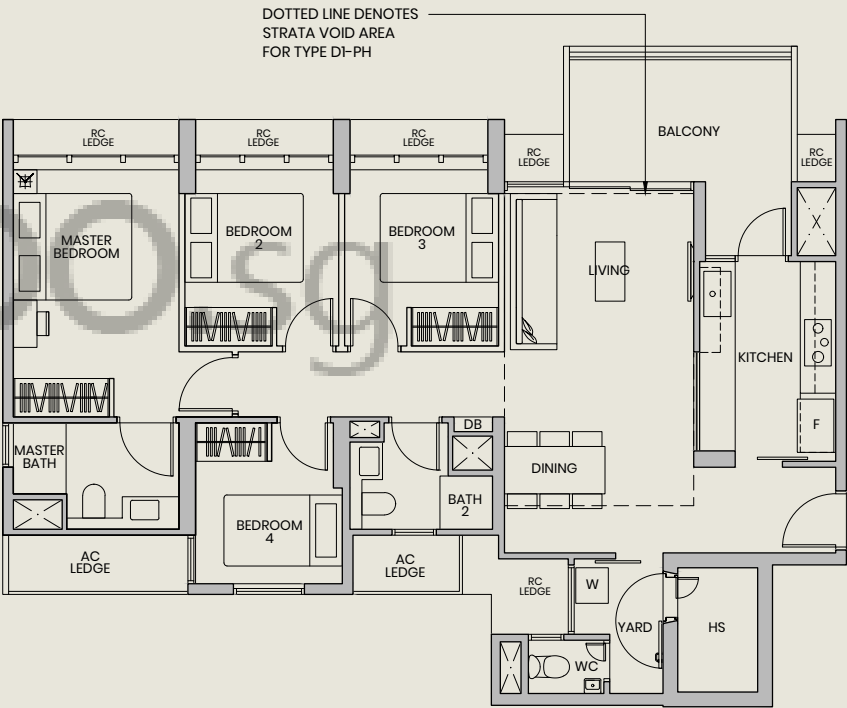
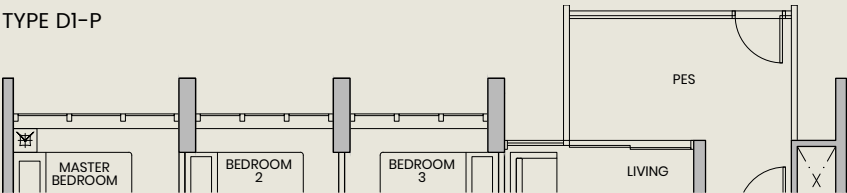
112 SQ M | 1206 SQ FT

TOWER 35 | #02-09 TO #13-09
TOWER 39 | #02-17 TO #13-17

TYPE D1-PH

131 SQ M | 1410 SQ FT
(INCLUSIVE OF 19 SQ M STRATA VOID OVER LIVING/DINING)

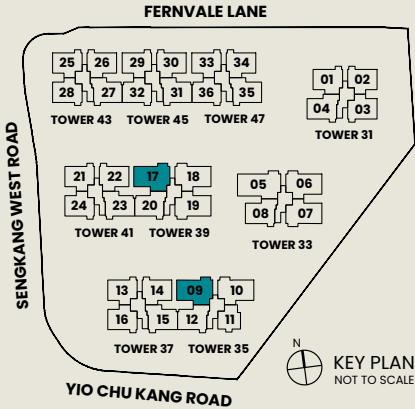
TOWER 35 | #14-09
TOWER 39 | #14-17



Legend

Wall not allowed to be hacked or altered

- | | | | |
|---|--------|----|--------------------|
| F | Fridge | DB | Distribution Board |
| W | Washer | HS | Household Shelter |

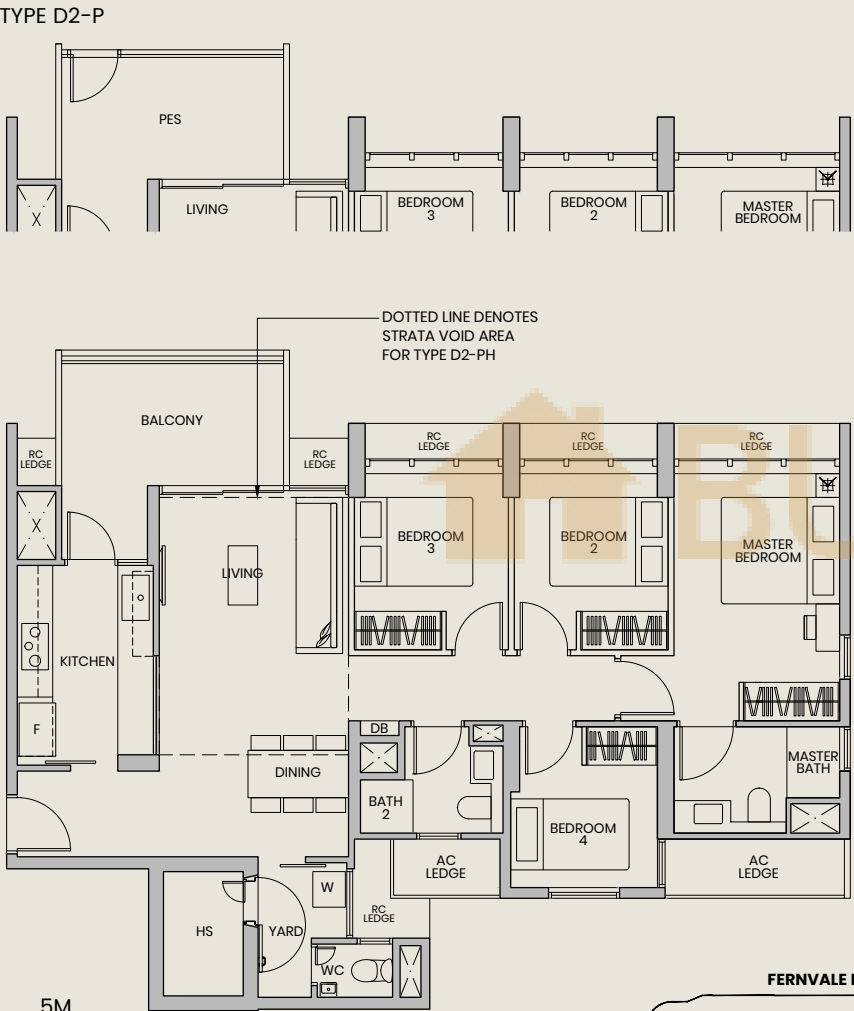


Area includes air conditioner (AC) ledge, balcony, PES and strata void where applicable. The above plans are subject to change as may be approved by the relevant authorities. All floor plans are approximate measurements only and are subject to government re-survey. The balcony shall not be enclosed unless with the approved balcony screen. The installation and cost of the screen shall be borne by the purchaser.



4 Bedroom Premium

| TYPE D2-P | TYPE D2 | TYPE D2-PH |
|---|---|---|
| 112 SQ M 1206 SQ FT | 112 SQ M 1206 SQ FT | 128 SQ M 1378 SQ FT (INCLUSIVE OF 16 SQ M STRATA VOID OVER LIVING) |
| TOWER 33 #01-06 TOWER 33 #01-07* TOWER 35 #01-10 TOWER 39 #01-18 TOWER 39 #01-19* | TOWER 33 #02-06 TO #13-06 TOWER 33 #02-07* TO #13-07* TOWER 35 #02-10 TO #13-10 TOWER 39 #02-18 TO #13-18 TOWER 39 #02-19* TO #13-19* | TOWER 33 #14-06 TOWER 33 #14-07* TOWER 35 #14-10 TOWER 39 #14-18 TOWER 39 #14-19* |

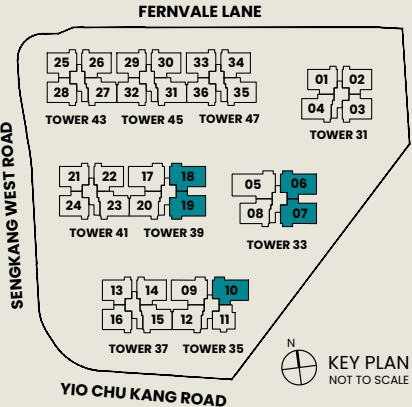


Legend

Wall not allowed to be hacked or altered

* Mirrored Unit

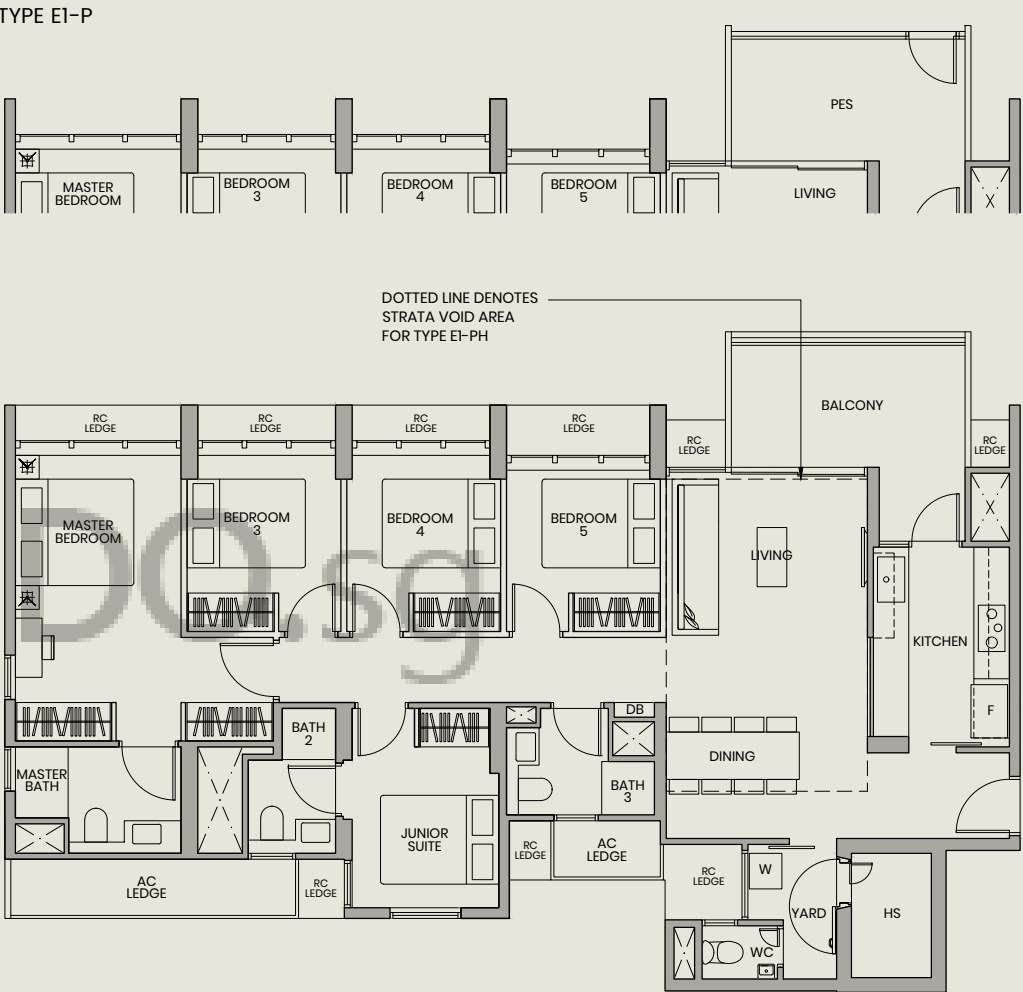
| | | | |
|---|--------|----|--------------------|
| F | Fridge | DB | Distribution Board |
| W | Washer | HS | Household Shelter |



Area includes air conditioner (AC) ledge, balcony, PES and strata void where applicable. The above plans are subject to change as may be approved by the relevant authorities. All floor plans are approximate measurements only and are subject to government re-survey. The balcony shall not be enclosed unless with the approved balcony screen. The installation and cost of the screen shall be borne by the purchaser.

5 Bedroom Luxury

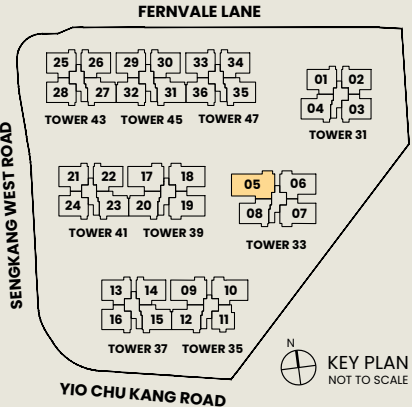
| TYPE E1-P | TYPE E1 | TYPE E1-PH |
|-----------------------|-----------------------------|--|
| 136 SQ M 1464 SQ FT | 136 SQ M 1464 SQ FT | 156 SQ M 1679 SQ FT (INCLUSIVE OF 20 SQ M STRATA VOID OVER LIVING/DINING) |
| TOWER 33 #01-05 | TOWER 33 #02-05 to #13-05 | TOWER 33 #14-05 |



Legend

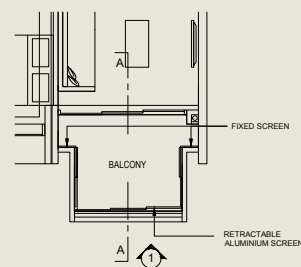
Wall not allowed to be hacked or altered

| | | | |
|---|--------|----|--------------------|
| F | Fridge | DB | Distribution Board |
| W | Washer | HS | Household Shelter |

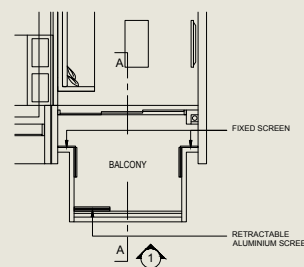


Area includes air conditioner (AC) ledge, balcony, PES and strata void where applicable. The above plans are subject to change as may be approved by the relevant authorities. All floor plans are approximate measurements only and are subject to government re-survey. The balcony shall not be enclosed unless with the approved balcony screen. The installation and cost of the screen shall be borne by the purchaser.

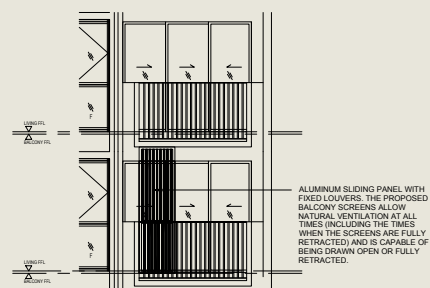
Approved Balcony Screen



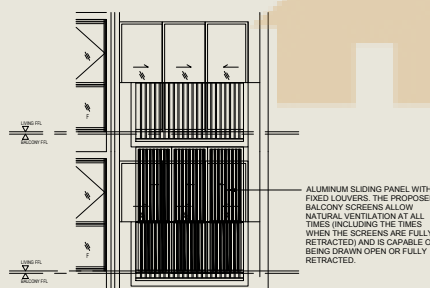
TYPICAL RETRACTABLE BALCONY SCREEN (FULLY CLOSED) – PLAN



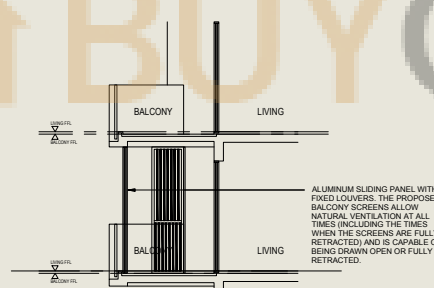
TYPICAL RETRACTABLE BALCONY SCREEN (FULLY RETRACTED) – PLAN



TYPICAL RETRACTABLE BALCONY SCREEN(OPEN) – ELEVATION 1



TYPICAL RETRACTABLE BALCONY SCREEN(CLOSED) – ELEVATION 1



TYPICAL RETRACTABLE BALCONY SCREEN – SECTION A-A

Note

1. Aluminium louver sliding folding screen is not provided for this development (unless otherwise stated).
2. The balcony shall not be enclosed unless the screen is approved by the relevant authorities.
3. Final selection of material, colour and detailing of the screen is subject to MCST approval.
4. Approval from MCST is required before installation.
5. Owner to engage the developer's appointed contractor and/or their own contractor to install the screen.
6. All installation fees to be borne by the owner.

Six Dimensions of Wellness



Spiritual Wellness

This aspect of wellness is about discovering what gives life meaning and direction. By living our values and beliefs, we can experience joy more fully.



Physical Wellness

This means eating well, exercising regularly, and making better lifestyle decisions. Physical wellness gives us more energy and endurance, directly impacting our quality of life.



Emotional Wellness

Emotional Wellness is the ability to express and accept a wide range of emotions. When we feel positive about ourselves, we enjoy more satisfying relationships.



Social Wellness

Social Wellness is about connecting with others, playing an active part in the community, and nurturing a strong support network in which we give and receive.



Intellectual Wellness

Intellectual wellness refers to continuous personal growth and development. It is the ability to keep an active and open mind to pursue different interests and hobbies.



Environmental Wellness

Environmental Wellness is about maintaining a healthy relationship with our surroundings. This means spending time in nature and being mindful of what is around us.



Click to return to the Greenwich Wellness Checklist

1

2

3

4