

# 2 Bedroom

## TYPE 2a

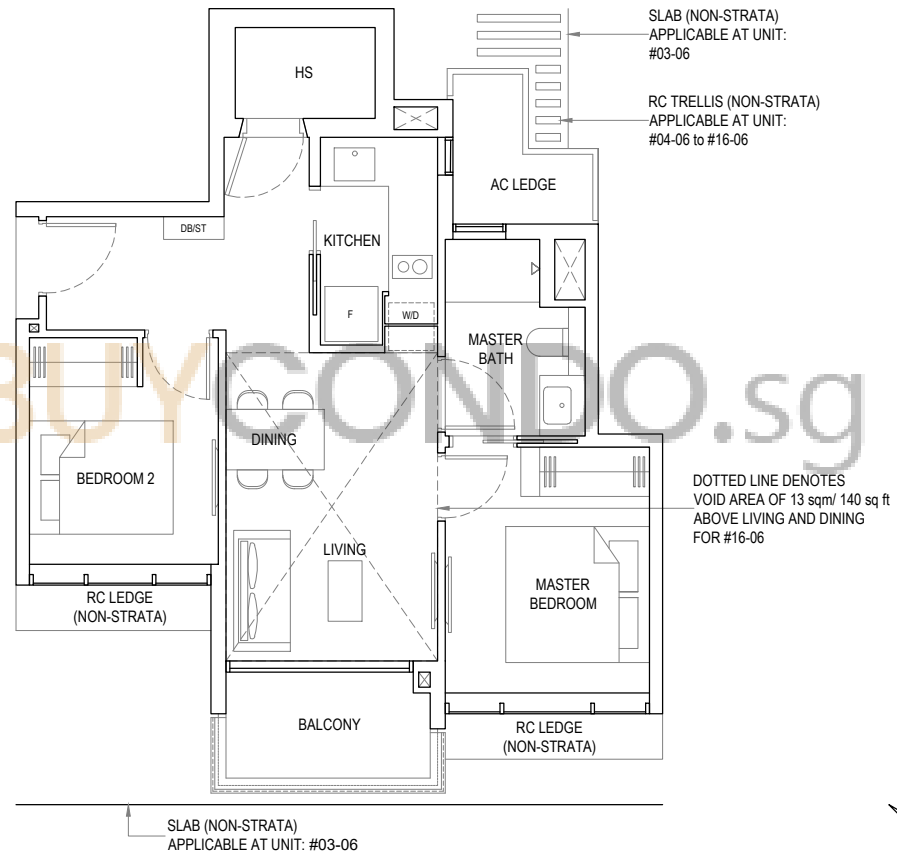
Area: 61 sq m / 657 sq ft  
Unit(s): #03-06 to #15-06

## TYPE 2a-P

Area: 74 sq m / 797 sq ft

Including strata void area of  
13 sq m / 140 sq ft  
above living and dining

Unit(s): #16-06

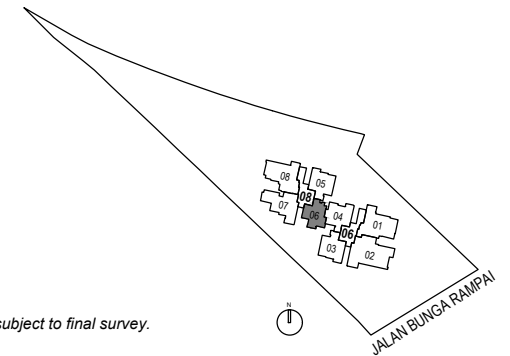


### LEGEND

DB/ST	DISTRIBUTION BOARD/STORAGE
F	FRIDGE
HS	HOUSEHOLD SHELTER
W/D	WASHER CUM DRYER



Areas include AC ledge, balcony, PES and strata void where applicable. The plans are subjected to change as may be required by relevant authorities. All areas and measurements stated herein as approximate and subject to final survey.



# 2 Bedroom Premium 1

## TYPE 2b

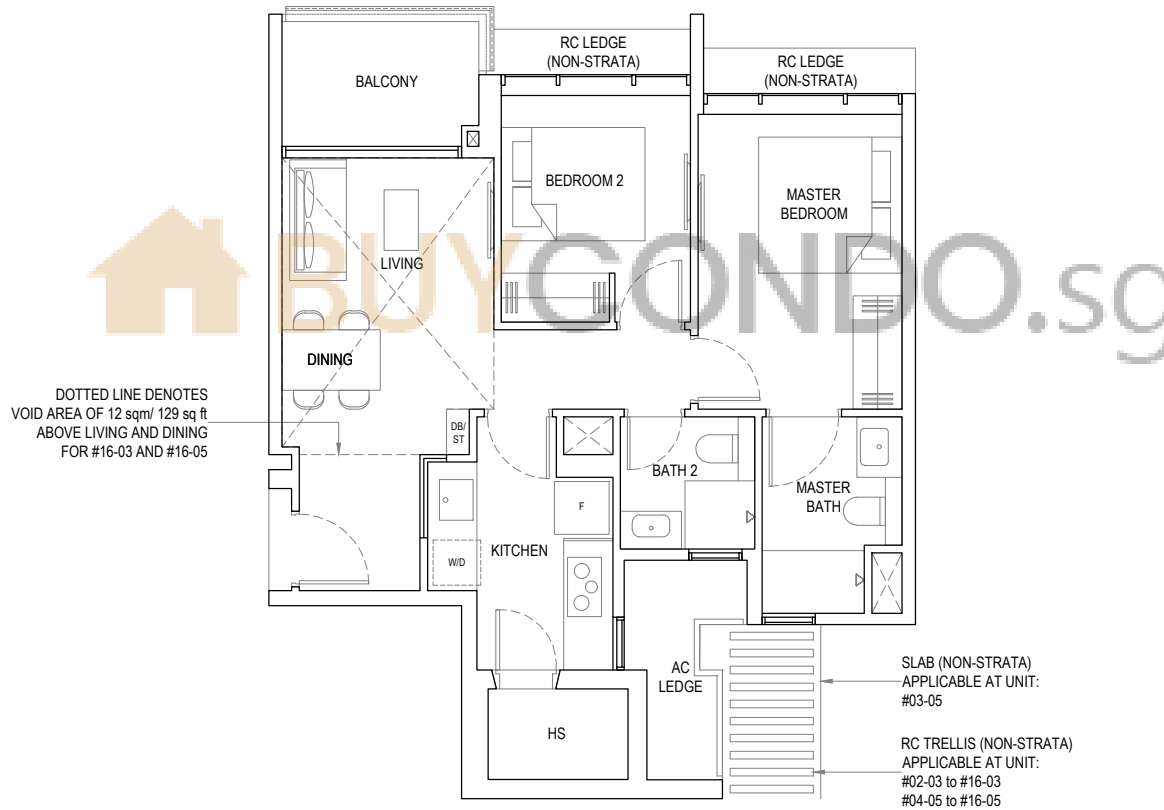
Area: 68 sq m / 732 sq ft  
 Unit(s): #02-03 to #15-03  
 #03-05 to #15-05

## TYPE 2b-P

Area: 80 sq m / 861 sq ft

Including strata void area of  
 12 sq m / 129 sq ft  
 above living and dining

Unit(s): #16-03  
 #16-05

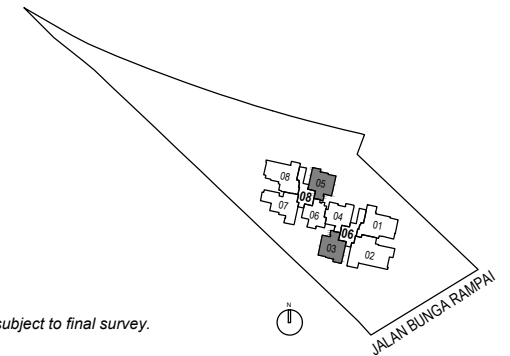


### LEGEND

- DB/ST DISTRIBUTION BOARD/STORAGE
- F FRIDGE
- HS HOUSEHOLD SHELTER
- WD WASHER CUM DRYER



Areas include AC ledge, balcony, PES and strata void where applicable. The plans are subjected to change as may be required by relevant authorities. All areas and measurements stated herein as approximate and subject to final survey.



# 2 Bedroom Premium 2

## TYPE 2c

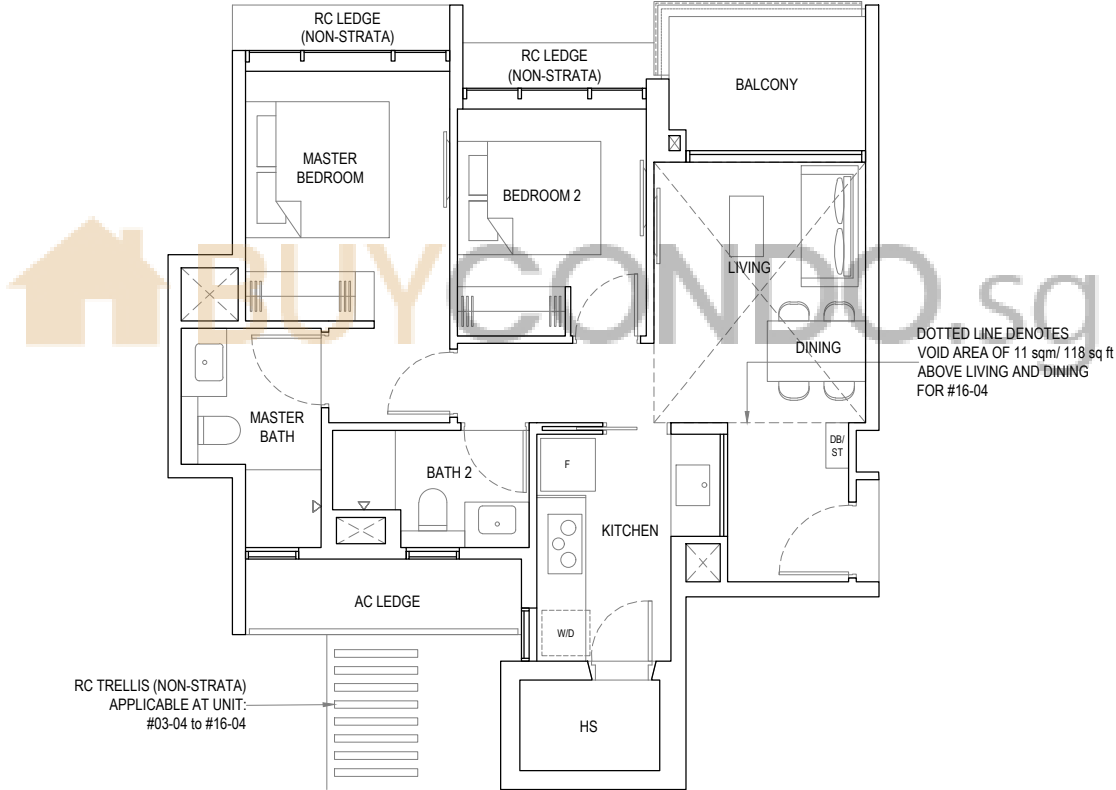
Area: 68 sq m / 732 sq ft  
 Unit(s): #03-04 to 15-04

## TYPE 2c-P

Area: 79 sq m / 850 sq ft

Including strata void area of  
 11 sq m / 118 sq ft  
 above living and dining

Unit(s): #16-04

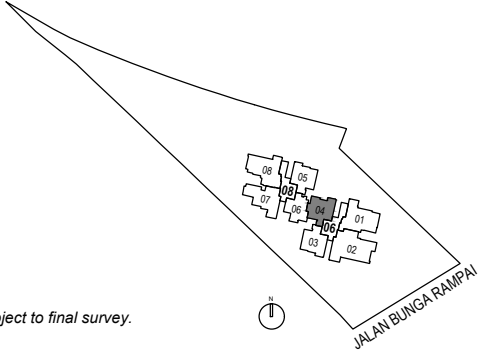


### LEGEND

- DB/ST DISTRIBUTION BOARD/STORAGE
- F FRIDGE
- HS HOUSEHOLD SHELTER
- W/D WASHER CUM DRYER



Areas include AC ledge, balcony, PES and strata void where applicable. The plans are subjected to change as may be required by relevant authorities. All areas and measurements stated herein as approximate and subject to final survey.



# 3 Bedroom

## TYPE 3a

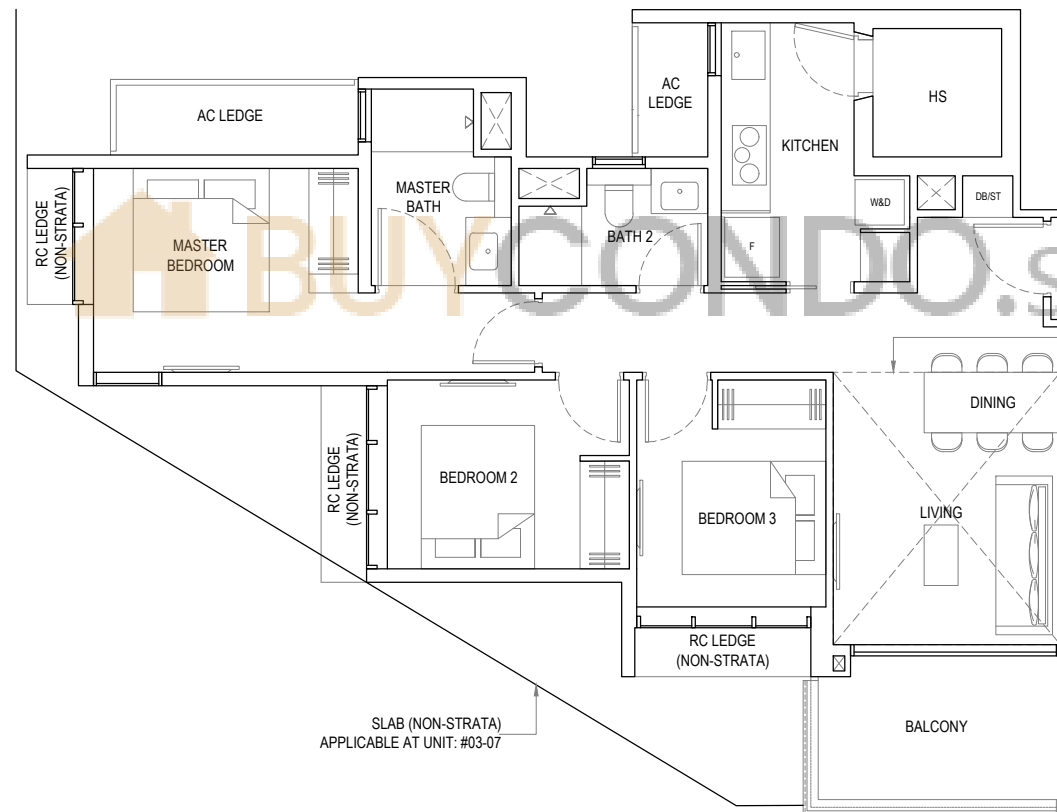
Area: 88 sq m / 947 sq ft  
Unit(s): #03-07 to #15-07

## TYPE 3a-P

Area: 101 sq m / 1087 sq ft

Including strata void area of  
13 sq m / 140 sq ft  
above living and dining

Unit(s): #16-07



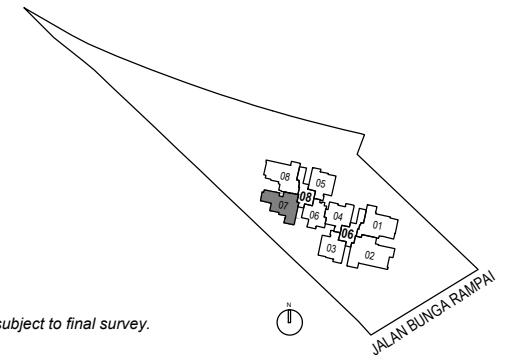
DOTTED LINE DENOTES  
VOID AREA OF 13 sqm/ 140 sq ft  
ABOVE LIVING AND DINING  
FOR #16-07

### LEGEND

- DB/ST DISTRIBUTION BOARD/STORAGE
- F FRIDGE
- HS HOUSEHOLD SHELTER
- W&D WASHER & DRYER



Areas include AC ledge, balcony, PES and strata void where applicable. The plans are subjected to change as may be required by relevant authorities. All areas and measurements stated herein as approximate and subject to final survey.



# 3 Bedroom Premium 1

## TYPE 3b

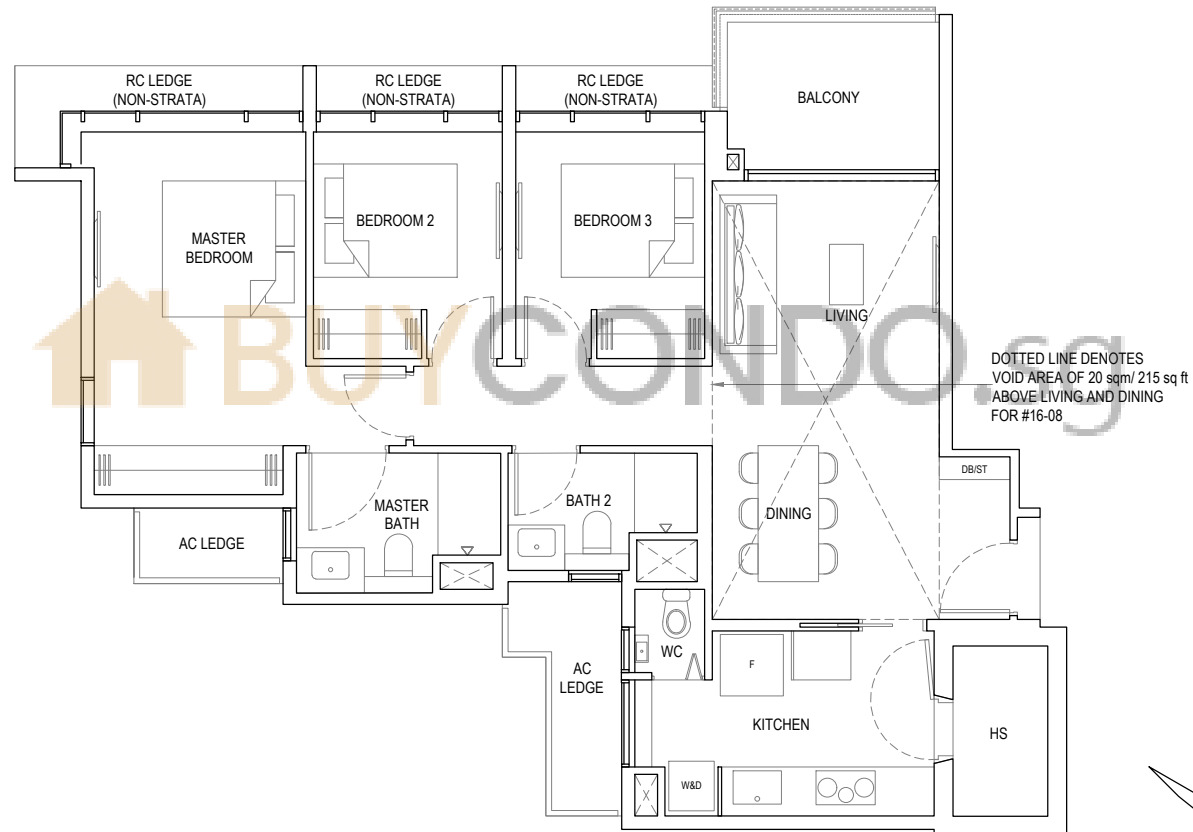
Area: 97 sq m / 1055 sq ft  
 Unit(s): #03-08 to #15-08

## TYPE 3b-P

Area: 117 sq m / 1259 sq ft

Including strata void area of  
 20 sq m / 215 sq ft  
 above living and dining

Unit(s): #16-08



### LEGEND

- DB/ST DISTRIBUTION BOARD/STORAGE
- F FRIDGE
- HS HOUSEHOLD SHELTER
- W&D WASHER & DRYER



Areas include AC ledge, balcony, PES and strata void where applicable. The plans are subjected to change as may be required by relevant authorities. All areas and measurements stated herein as approximate and subject to final survey.



# 3 Bedroom Premium 2

## TYPE 3c

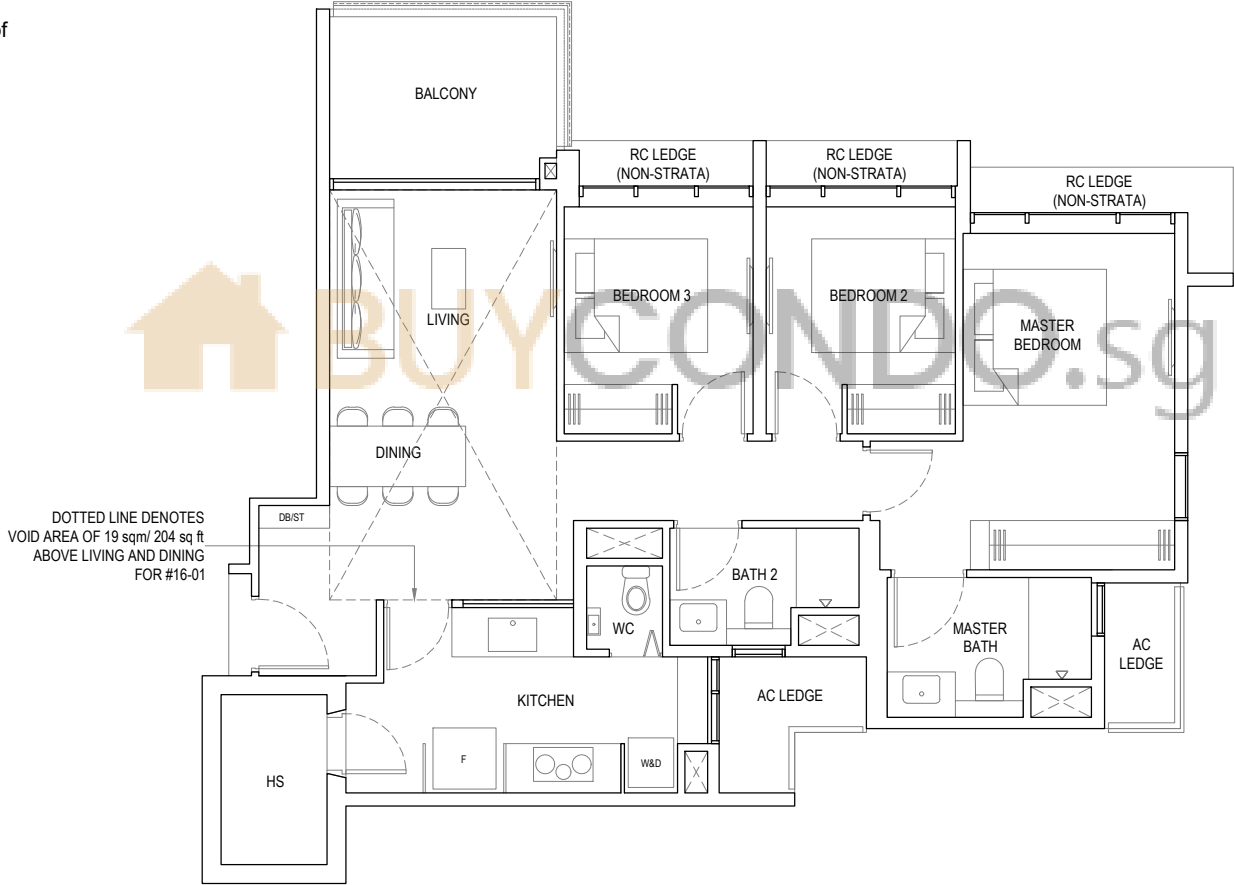
Area: 99 sq m / 1066 sq ft  
 Unit(s): #02-01 to #15-01

## TYPE 3c-P

Area: 118 sq m / 1270 sq ft

Including strata void area of  
 19 sq m / 204 sq ft  
 above living and dining

Unit(s): #16-01



- LEGEND**
- DB/ST DISTRIBUTION BOARD/STORAGE
  - F FRIDGE
  - HS HOUSEHOLD SHELTER
  - W&D WASHER & DRYER



Areas include AC ledge, balcony, PES and strata void where applicable. The plans are subjected to change as may be required by relevant authorities. All areas and measurements stated herein as approximate and subject to final survey.



# 4 Bedroom + Study

## TYPE 4a

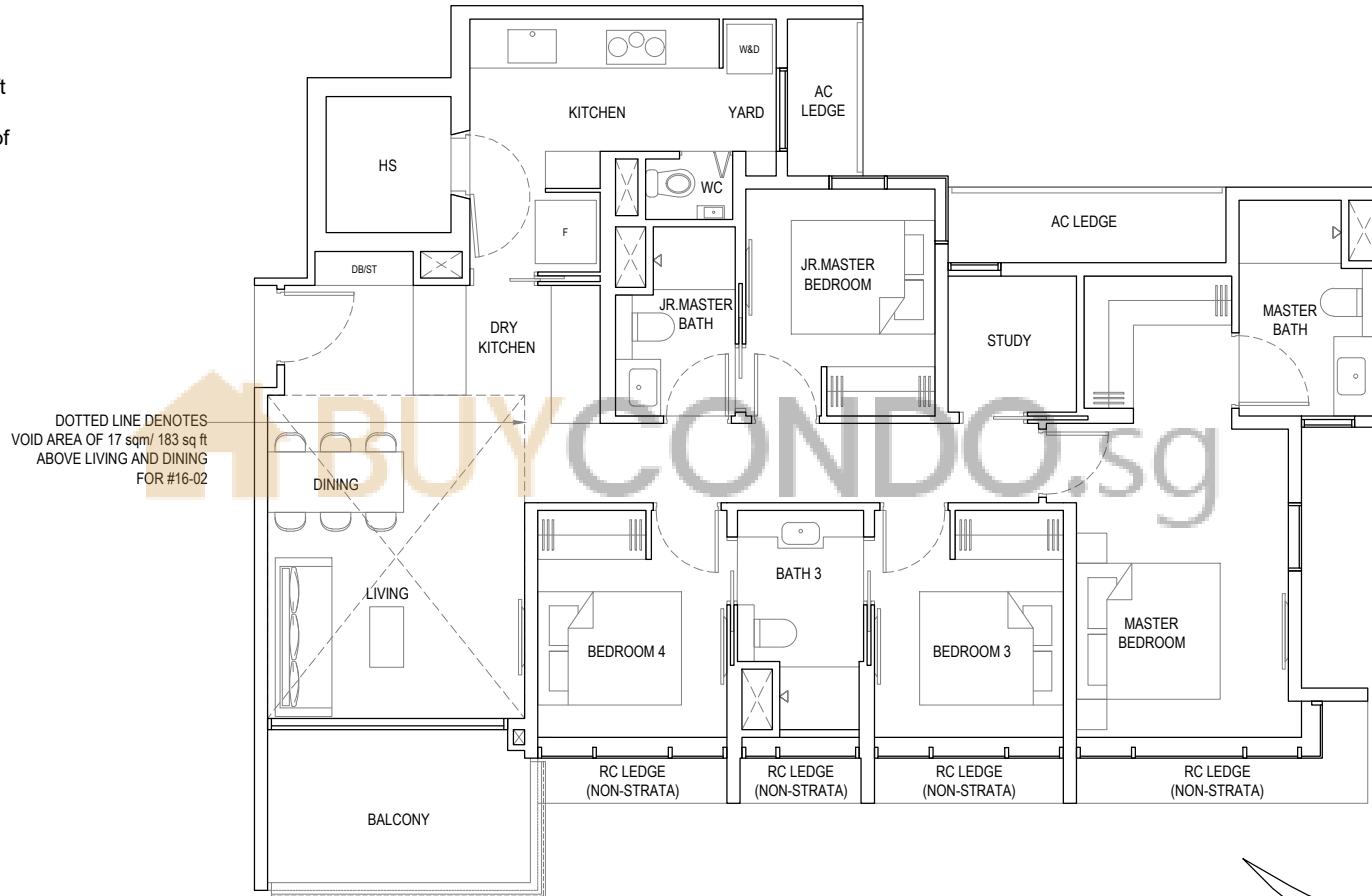
Area: 126 sq m / 1356 sq ft  
 Unit(s): #02-02 to #15-02

## TYPE 4a-P

Area: 143 sq m / 1539 sq ft

Including strata void area of  
 17 sq m / 183 sq ft  
 above living and dining

Unit(s): #16-02



### LEGEND

- DB/ST DISTRIBUTION BOARD/STORAGE
- F FRIDGE
- HS HOUSEHOLD SHELTER
- W&D WASHER & DRYER



Areas include AC ledge, balcony, PES and strata void where applicable. The plans are subjected to change as may be required by relevant authorities. All areas and measurements stated herein as approximate and subject to final survey.

