

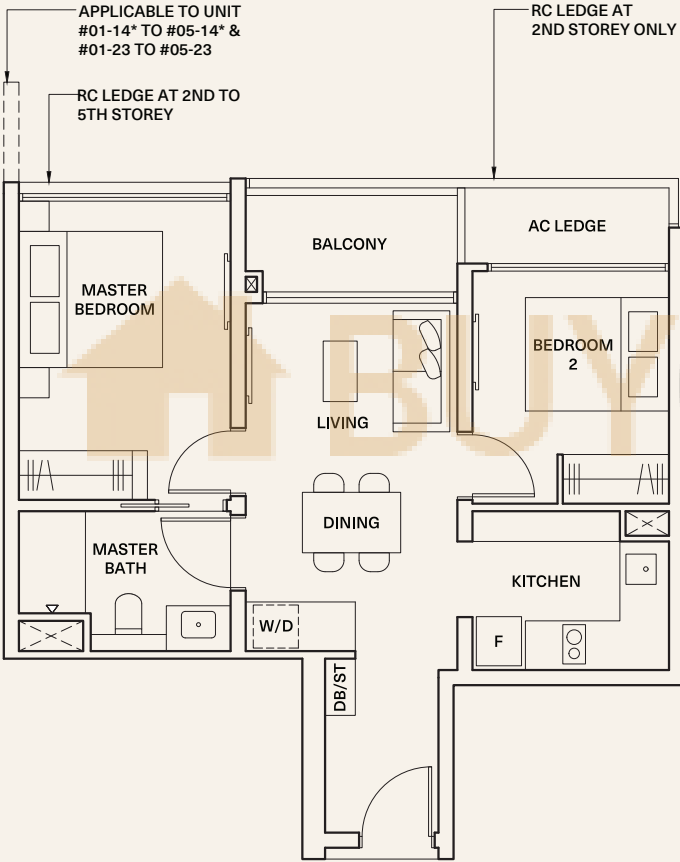
2 Bedroom

TYPE 2C1  
SIZE 60 sqm (646 sqft)

- \*Mirror
- #01-17 to #05-17

#01-23 to #05-23
- #01-14\* to #05-14\*

#01-20\* to #05-20\*



Areas include AC ledge and balcony, where applicable. All RC ledges are non-load bearing. The plans are subjected to change as may be required by relevant authorities. All areas and measurements stated herein as approximate and subject to final survey.

2 Bedroom

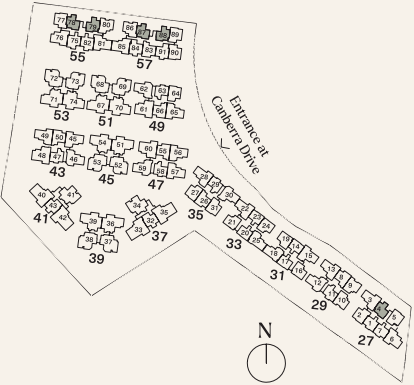
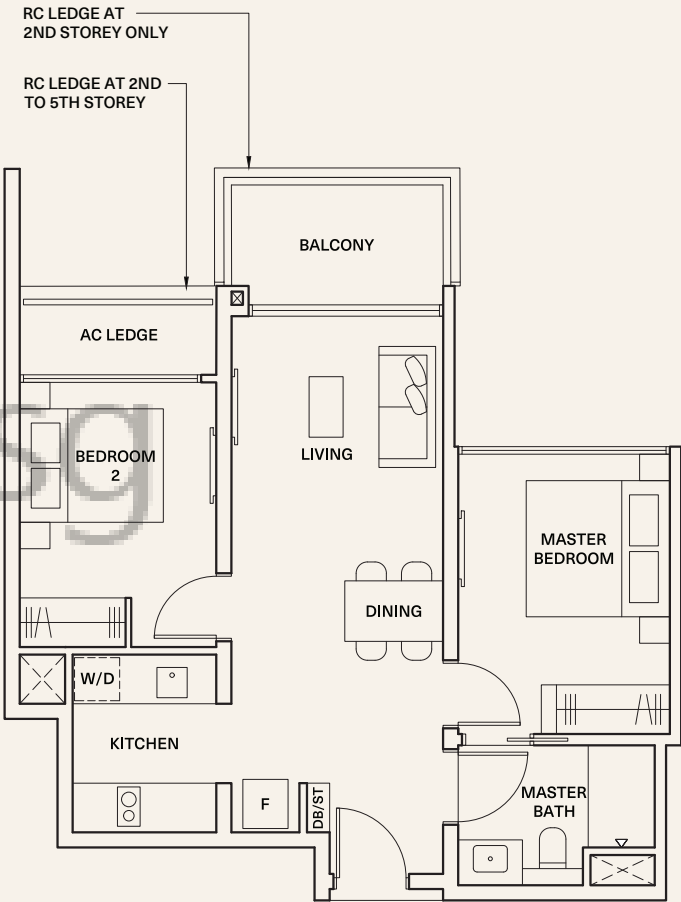
TYPE 2C2  
SIZE 63 sqm (678 sqft)

- \*Mirror
- #01-04 to #05-04

#01-78 to #05-78

#01-87 to #05-87
- #01-79\* to #05-79\*

#01-88 to #05-88\*



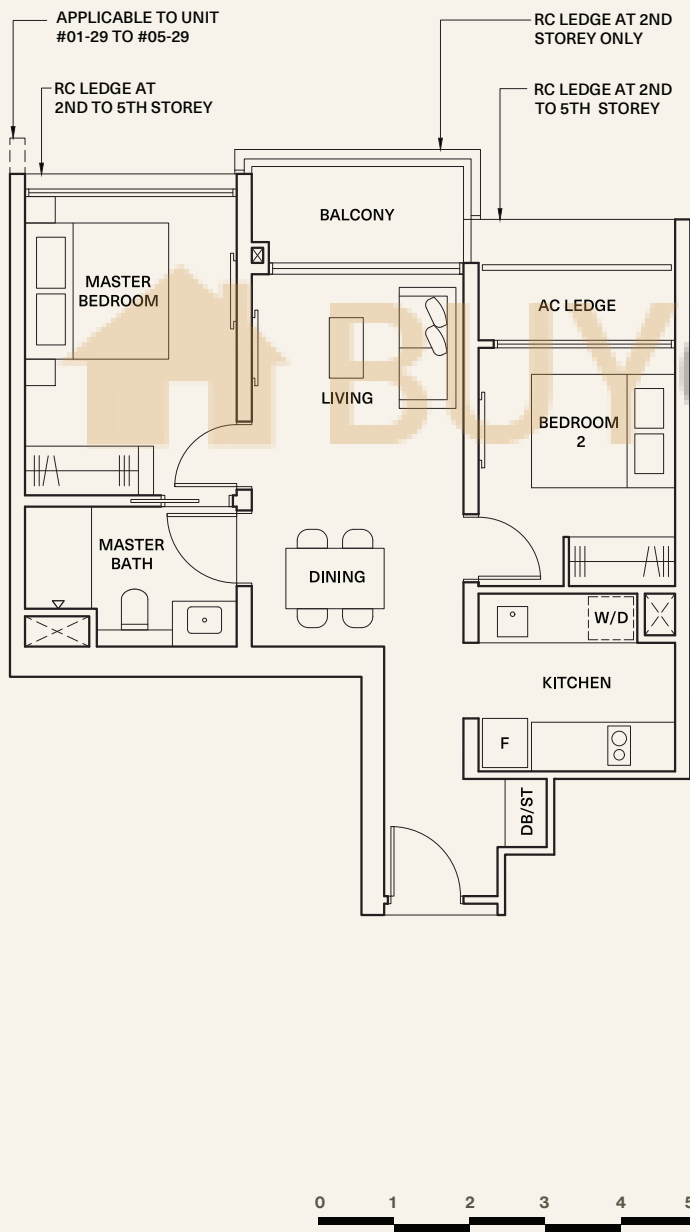
Areas include AC ledge and balcony, where applicable. All RC ledges are non-load bearing. The plans are subjected to change as may be required by relevant authorities. All areas and measurements stated herein as approximate and subject to final survey.

2 Bedroom

TYPE 2C3

SIZE 63 sqm (678 sqft)

#01-11 to #05-11  
#01-29 to #05-29



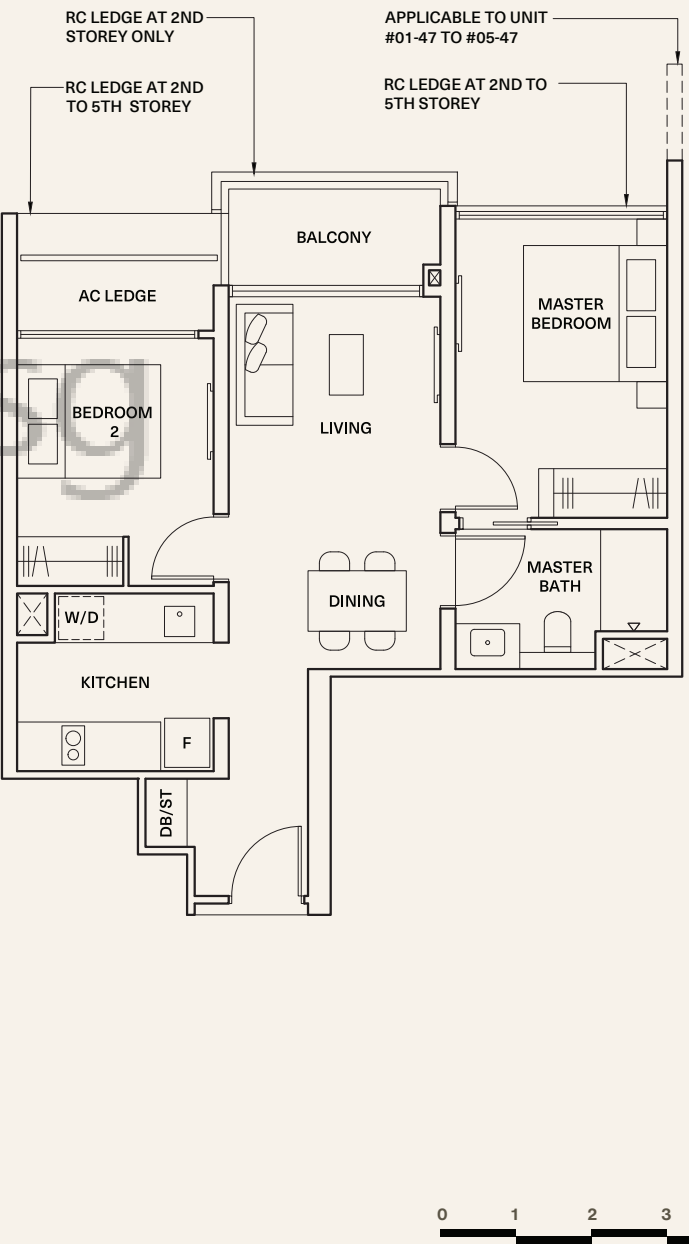
2 Bedroom

TYPE 2C4

SIZE 63 sqm (678 sqft)

#01-47 to #05-47  
#01-63 to #05-63

\*Mirror  
#01-58\* to #05-58\*



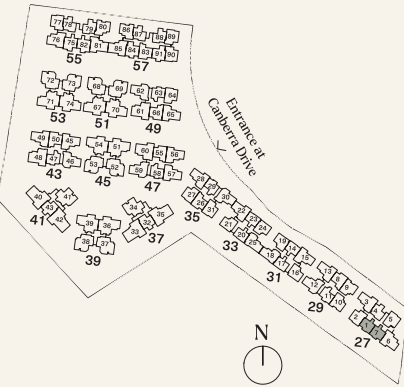
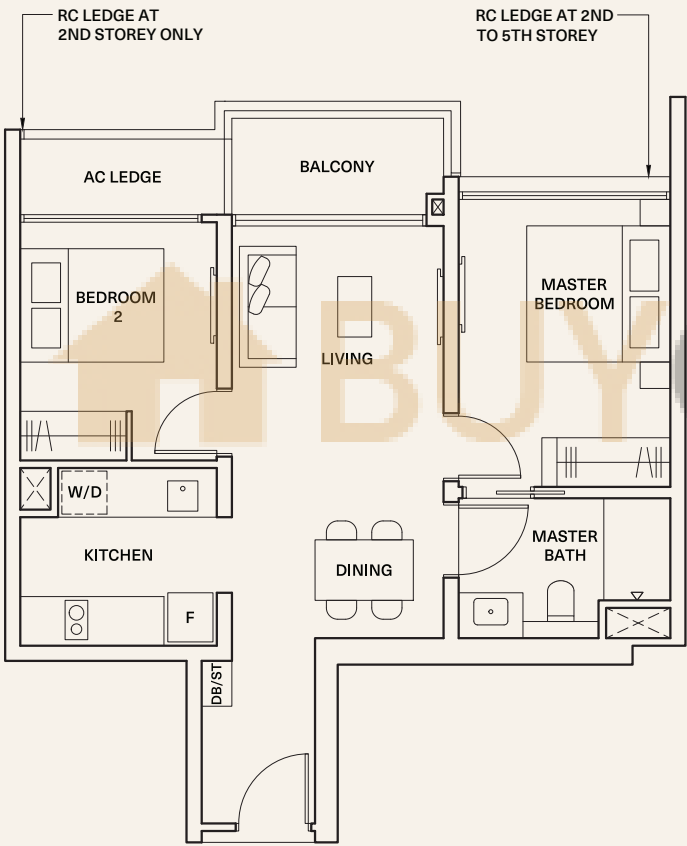
Areas include AC ledge and balcony, where applicable. All RC ledges are non-load bearing. The plans are subjected to change as may be required by relevant authorities. All areas and measurements stated herein as approximate and subject to final survey.

Areas include AC ledge and balcony, where applicable. All RC ledges are non-load bearing. The plans are subjected to change as may be required by relevant authorities. All areas and measurements stated herein as approximate and subject to final survey.

2 Bedroom

TYPE 2C5  
SIZE 63 sqm (678 sqft)

#01-01 to #05-01      \*Mirror  
#01-07\* to #05-07\*

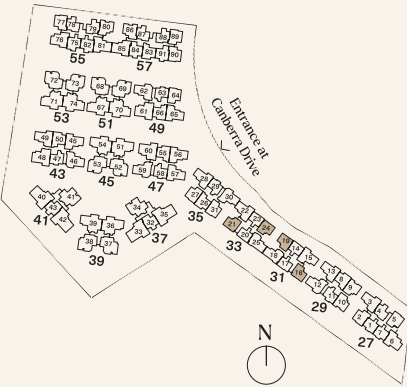


Areas include AC ledge and balcony, where applicable. All RC ledges are non-load bearing. The plans are subjected to change as may be required by relevant authorities. All areas and measurements stated herein as approximate and subject to final survey.

2 Bedroom Premium

TYPE 2P1  
SIZE 67 sqm (721 sqft)

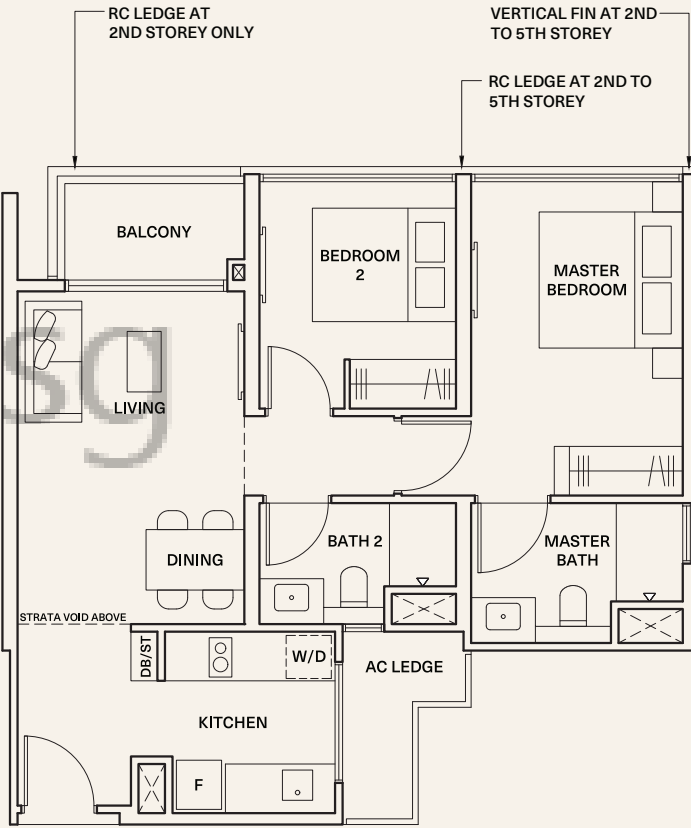
#01-21 to #04-21      \*Mirror  
#01-24 to #04-24      #01-16\* to #04-16\*  
#01-19\* to #04-19\*



Areas include AC ledge and balcony, where applicable. All RC ledges are non-load bearing. The plans are subjected to change as may be required by relevant authorities. All areas and measurements stated herein as approximate and subject to final survey.

TYPE 2P1-PH  
SIZE 81 sqm (872 sqft)

Inclusive of strata void area of  
14 sqm / 151 sqft above living and dining  
\*Mirror  
#05-21      #05-16\*  
#05-24      #05-19\*



2 Bedroom Premium

TYPE 2P2

SIZE 70 sqm (753 sqft)

\*Mirror

#01-02 to #04-02    #01-77\* to #04-77\*

#01-89 to #04-89    #01-90\* to #04-90\*

TYPE 2P2-PH

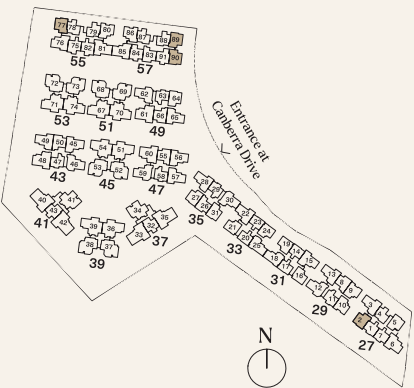
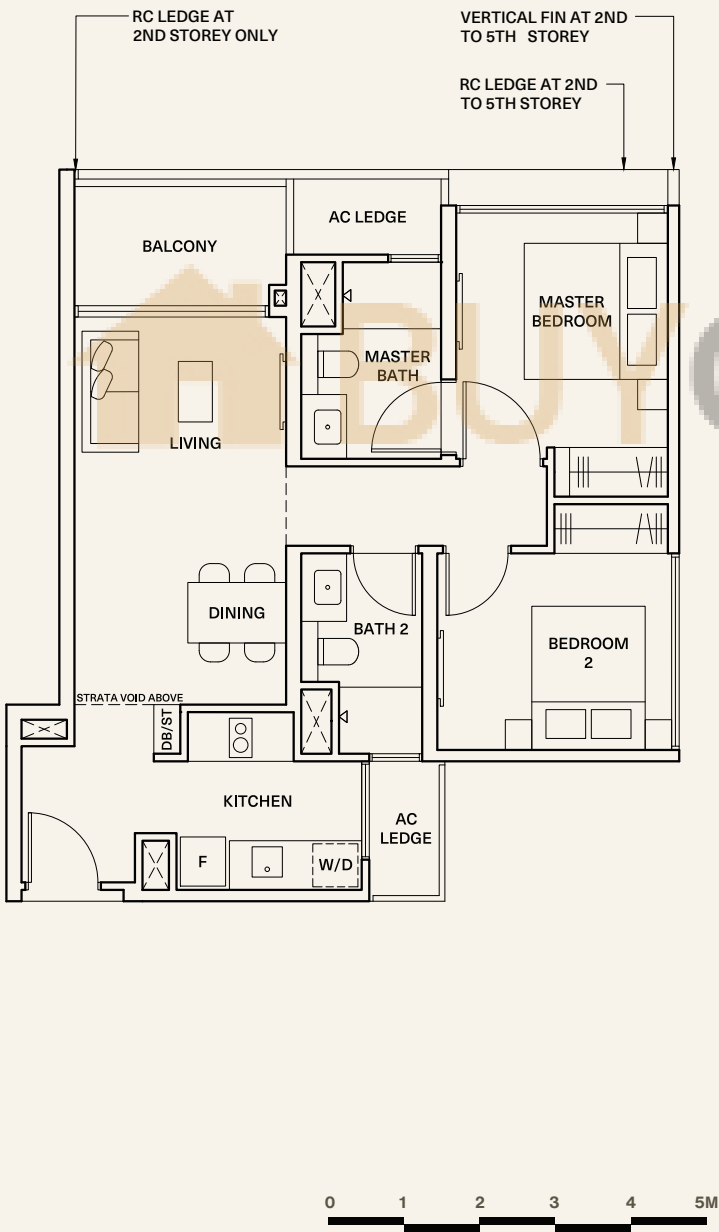
SIZE 86 sqm (926 sqft)

Inclusive of strata void area of 16 sqm / 172 sqft above living and dining

\*Mirror

#05-02    #05-77\*

#05-89    #05-90\*



Areas include AC ledge and balcony, where applicable. All RC ledges are non-load bearing. The plans are subjected to change as may be required by relevant authorities. All areas and measurements stated herein as approximate and subject to final survey.

2 Bedroom Premium

TYPE 2P3

SIZE 70 sqm (753 sqft)

\*Mirror

#01-05 to #04-05    #01-31\* to #04-31\*

#02-27 to #04-27

#01-64 to #04-64

TYPE 2P3-PH

SIZE 86 sqm (926 sqft)

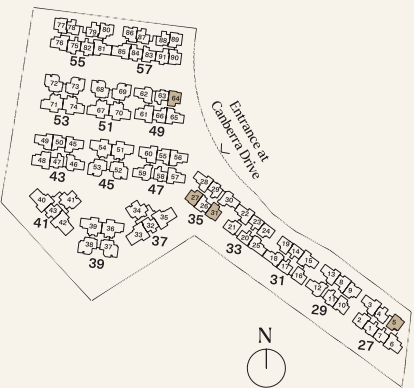
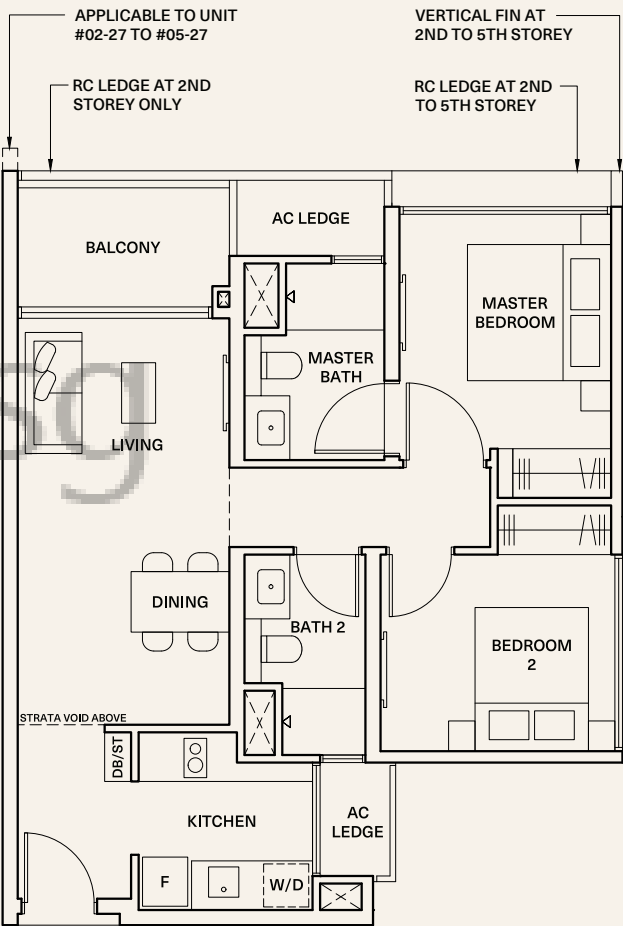
Inclusive of strata void area of 16 sqm / 172 sqft above living and dining

\*Mirror

#05-05    #05-31\*

#05-27

#05-64



Areas include AC ledge and balcony, where applicable. All RC ledges are non-load bearing. The plans are subjected to change as may be required by relevant authorities. All areas and measurements stated herein as approximate and subject to final survey.

2 Bedroom Premium

TYPE 2P4

SIZE 70 sqm (753 sqft)

#01-84 to #04-84

\*Mirror

#01-91\* to #04-91\*

TYPE 2P4-PH

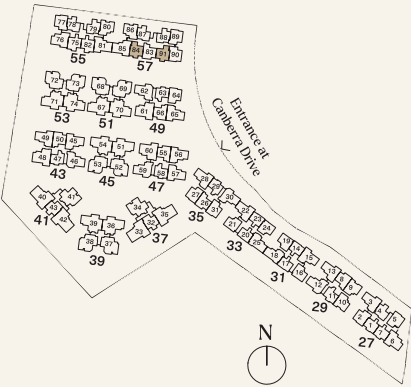
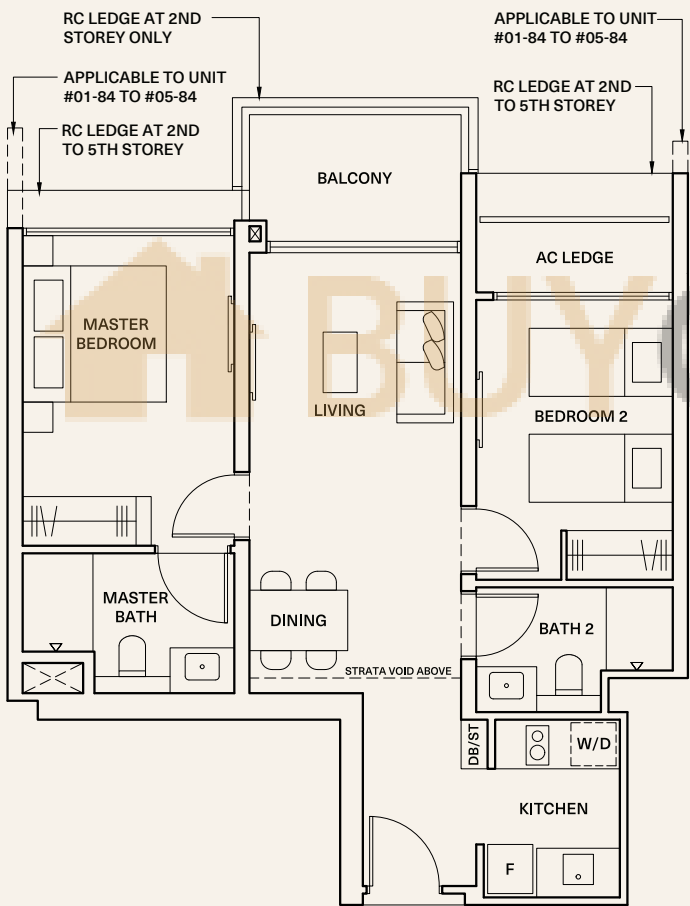
SIZE 87 sqm (936 sqft)

Inclusive of strata void area of 17 sqm / 183 sqft above living and dining

\*Mirror

#05-84

#05-91\*



Areas include AC ledge and balcony, where applicable. All RC ledges are non-load bearing. The plans are subjected to change as may be required by relevant authorities. All areas and measurements stated herein as approximate and subject to final survey.

2 Bedroom Premium

TYPE 2P5

SIZE 70 sqm (753 sqft)

#01-08 to #04-08

#01-26 to #04-26

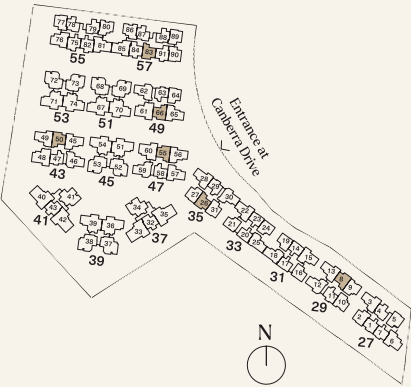
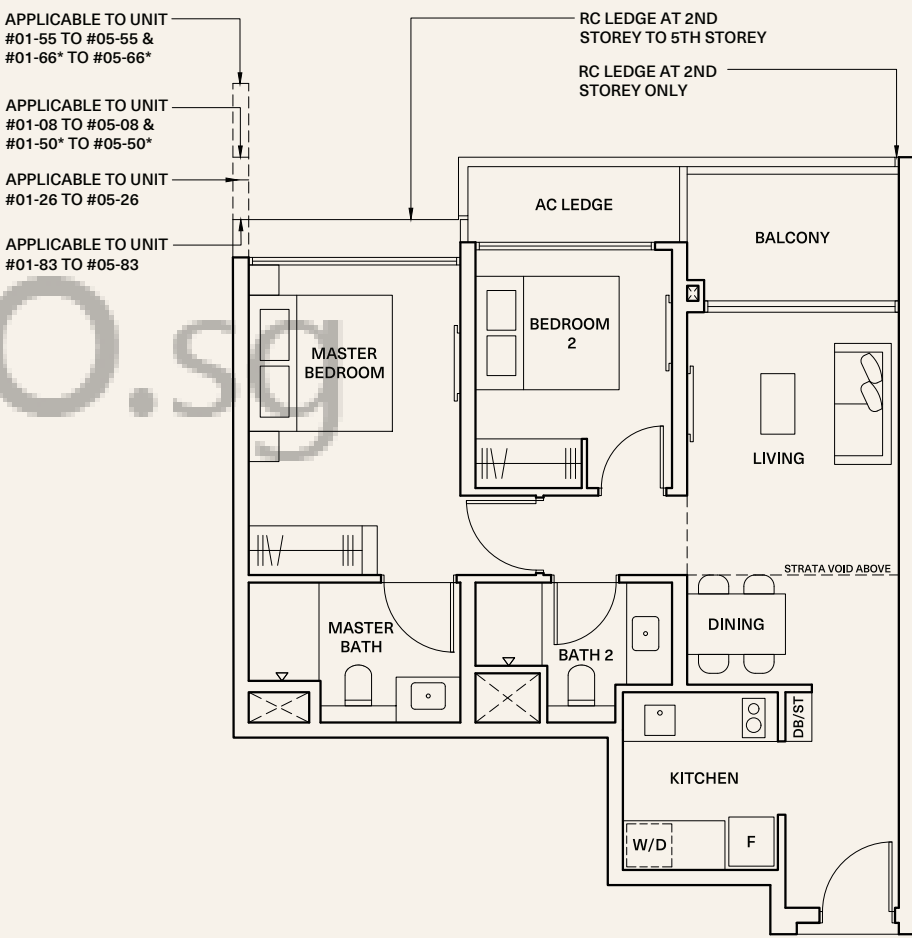
#01-55 to #04-55

#01-83 to #04-83

\*Mirror

#01-50\* to #04-50\*

#01-66\* to #04-66\*



Areas include AC ledge and balcony, where applicable. All RC ledges are non-load bearing. The plans are subjected to change as may be required by relevant authorities. All areas and measurements stated herein as approximate and subject to final survey.

2 Bedroom Premium

TYPE 2P6

SIZE 70 sqm (753 sqft)

#01-75 to #04-75

\*Mirror #01-82\* to #04-82\*

TYPE 2P6-PH

SIZE 84 sqm (904 sqft)

Inclusive of strata void area of 14 sqm / 151 sqft above living and dining

\*Mirror #05-75 #05-82\*

2 Bedroom Premium

TYPE 2P7

SIZE 70 sqm (753 sqft)

#01-32 to #04-32

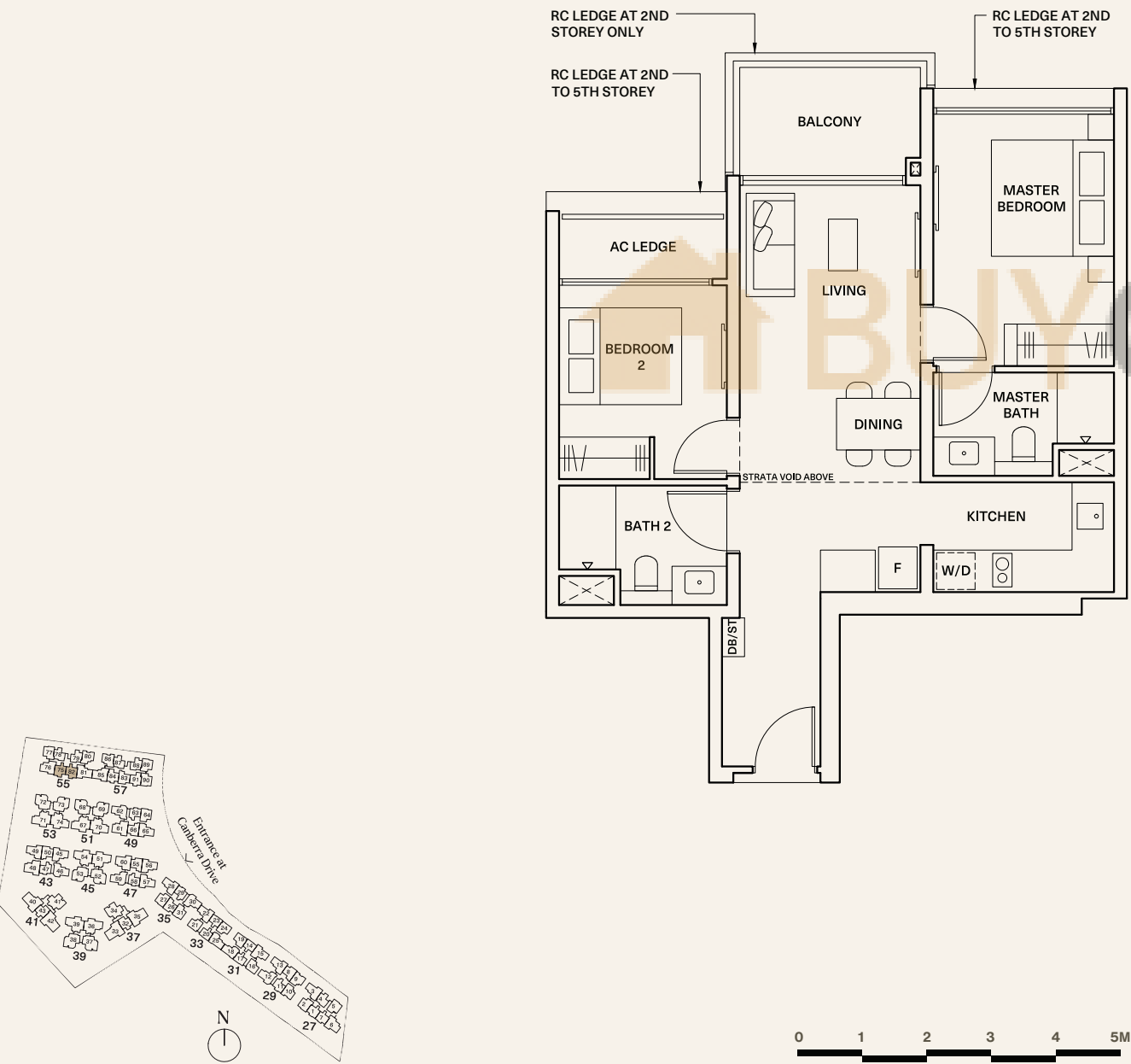
\*Mirror #01-43\* to #04-43\*

TYPE 2P7-PH

SIZE 83 sqm (893 sqft)

Inclusive of strata void area of 13 sqm / 140 sqft above living and dining

\*Mirror #05-32 #05-43\*



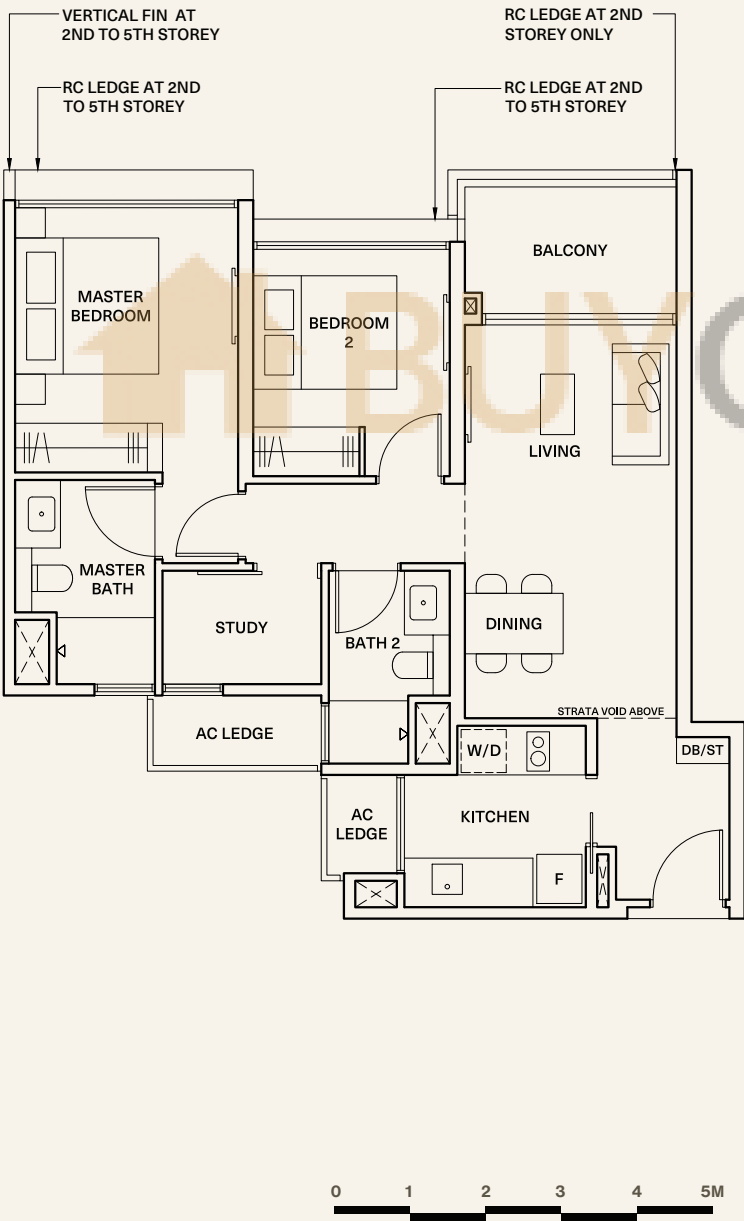
Areas include AC ledge and balcony, where applicable. All RC ledges are non-load bearing. The plans are subjected to change as may be required by relevant authorities. All areas and measurements stated herein as approximate and subject to final survey.

Areas include AC ledge and balcony, where applicable. All RC ledges are non-load bearing. The plans are subjected to change as may be required by relevant authorities. All areas and measurements stated herein as approximate and subject to final survey.

2 Bedroom Premium + Study

TYPE 2PS1  
SIZE 74 sqm (797 sqft)  
#01-86 to #04-86  
\*Mirror  
#01-80\* to #04-80\*

TYPE 2PS1-PH  
SIZE 90 sqm (969 sqft)  
Inclusive of strata void area of  
16 sqm / 172 sqft above living and dining  
\*Mirror  
#05-86 #05-80\*

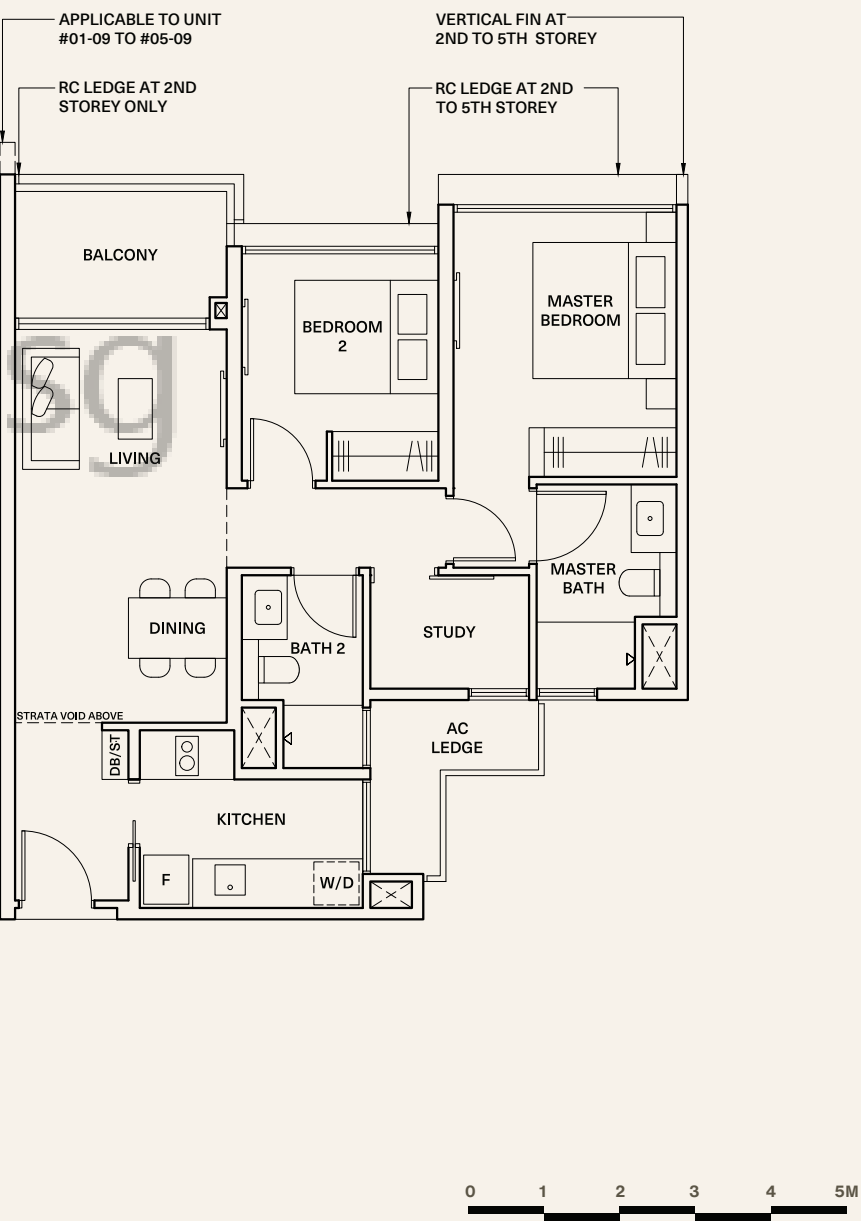


Areas include AC ledge and balcony, where applicable. All RC ledges are non-load bearing. The plans are subjected to change as may be required by relevant authorities. All areas and measurements stated herein as approximate and subject to final survey.

2 Bedroom Premium + Study

TYPE 2PS2  
SIZE 74 sqm (797 sqft)  
#01-09 to #04-09  
\*Mirror  
#01-10\* to #04-10\*

TYPE 2PS2-PH  
SIZE 90 sqm (969 sqft)  
Inclusive of strata void area of  
16 sqm / 172 sqft above living and dining  
\*Mirror  
#05-09 #05-10\*

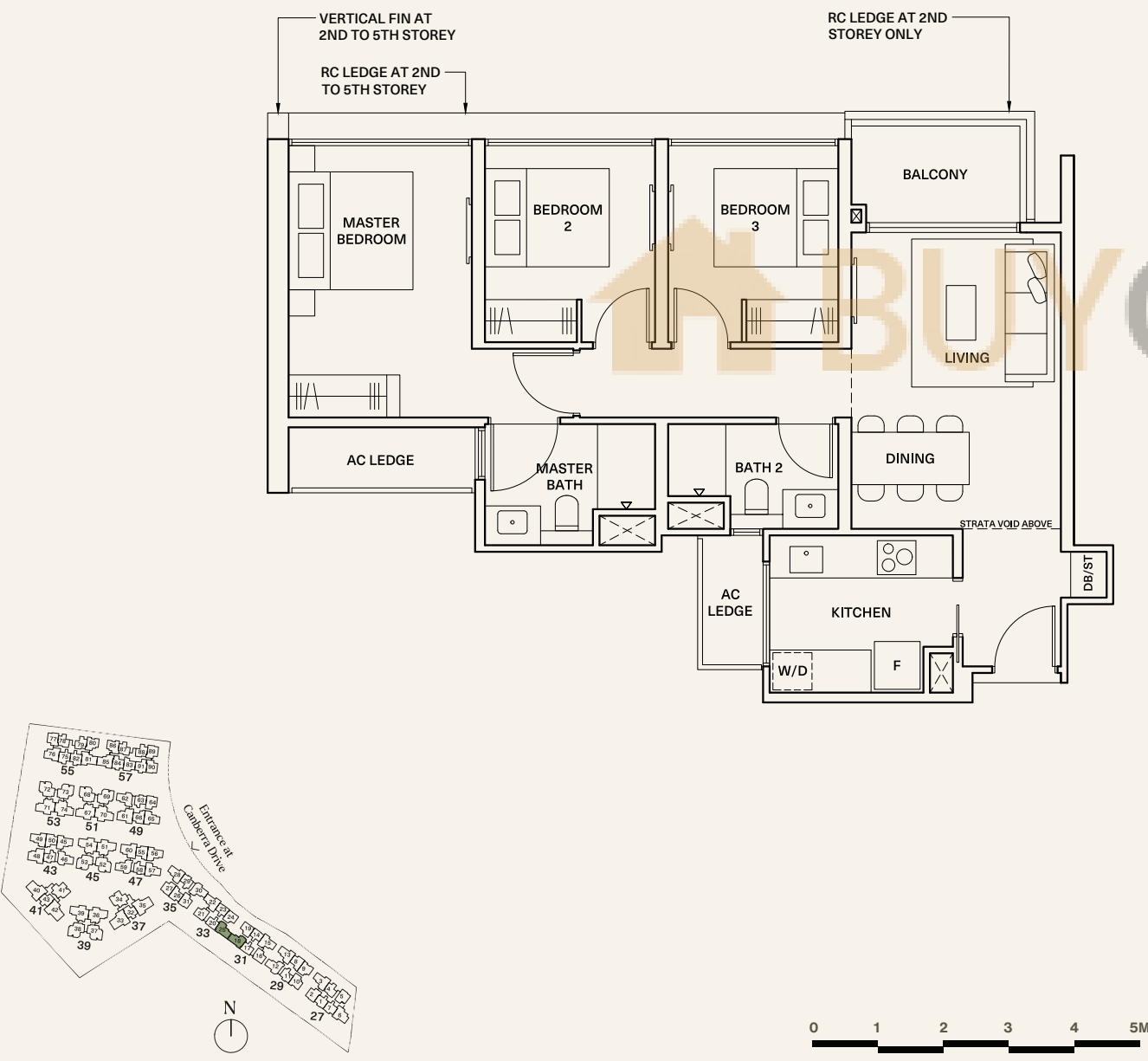


Areas include AC ledge and balcony, where applicable. All RC ledges are non-load bearing. The plans are subjected to change as may be required by relevant authorities. All areas and measurements stated herein as approximate and subject to final survey.

3 Bedroom

TYPE 3C1  
SIZE 84 sqm (904 sqft)  
#01-25 to #04-25  
\*Mirror  
#01-18\* to #04-18\*

TYPE 3C1-PH  
SIZE 100 sqm (1,076 sqft)  
Inclusive of strata void area of  
16 sqm / 172 sqft above living and dining  
\*Mirror  
#05-25 #05-18\*

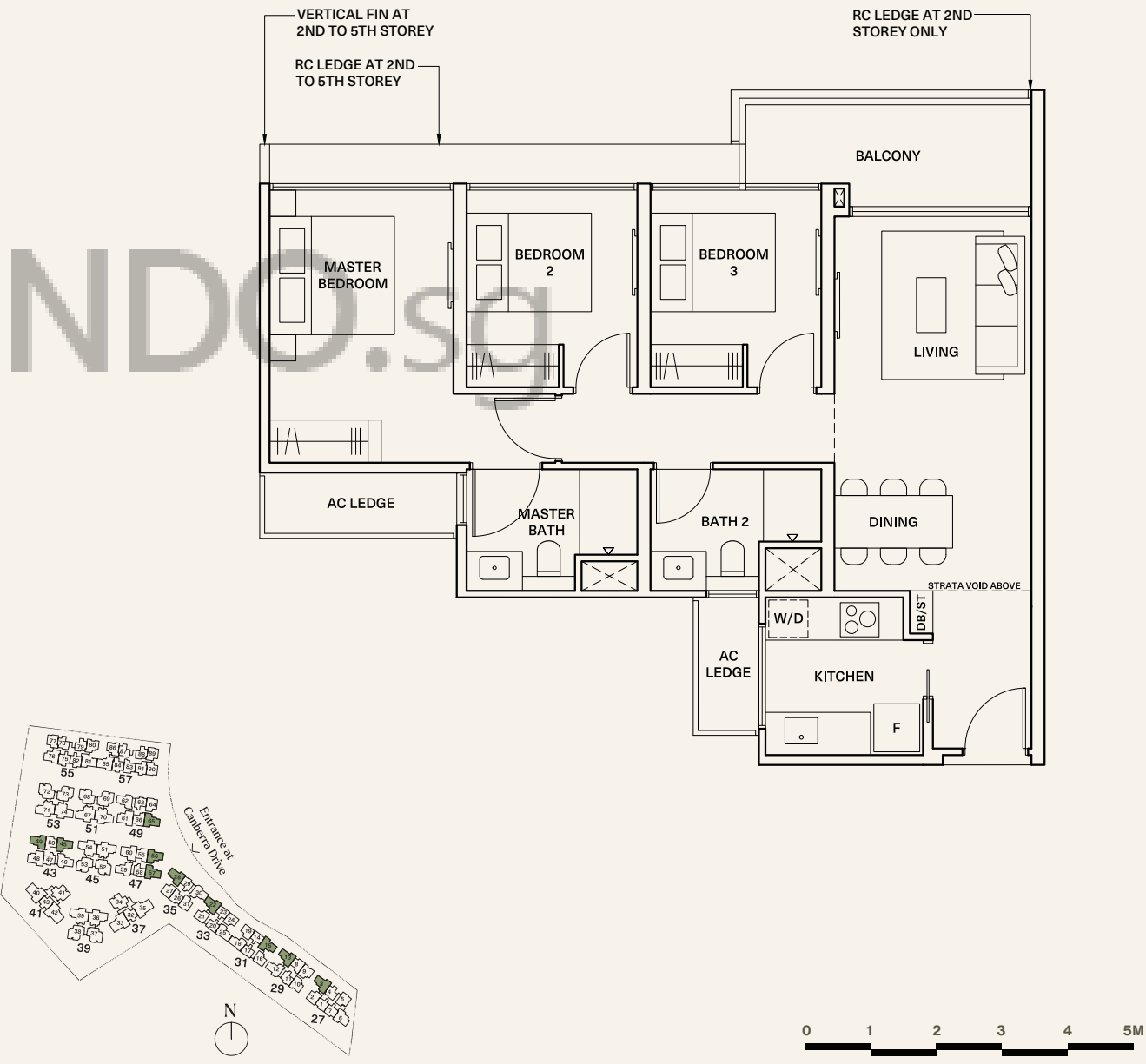


Areas include AC ledge and balcony, where applicable. All RC ledges are non-load bearing. The plans are subjected to change as may be required by relevant authorities. All areas and measurements stated herein as approximate and subject to final survey.

3 Bedroom

TYPE 3C2  
SIZE 89 sqm (958 sqft)  
#01-03 to #04-03  
#01-13 to #04-13  
#01-22 to #04-22  
#02-28 to #04-28  
#01-49 to #04-49  
#01-57 to #04-57  
#01-65 to #04-65  
\*Mirror  
#01-15\* to #04-15\*  
#01-45\* to #04-45\*  
#01-56\* to #04-56\*

TYPE 3C2-PH  
SIZE 108 sqm (1,163 sqft)  
Inclusive of strata void area of  
19 sqm / 205 sqft above living and dining  
\*Mirror  
#05-03 #05-49 #05-15\*  
#05-13 #05-57 #05-45\*  
#05-22 #05-65 #05-56\*  
#05-28



Areas include AC ledge and balcony, where applicable. All RC ledges are non-load bearing. The plans are subjected to change as may be required by relevant authorities. All areas and measurements stated herein as approximate and subject to final survey.



3 Bedroom

TYPE 3C3

SIZE 89 sqm (958 sqft)

\*Mirror

#01-12 to #04-12

#01-30 to #04-30

#01-59 to #04-59

#01-46\* to #04-46\*

#01-62\* to #04-62\*

TYPE 3C3-PH

SIZE 107 sqm (1,152 sqft)

Inclusive of strata void area of 18 sqm / 194 sqft above living and dining

\*Mirror

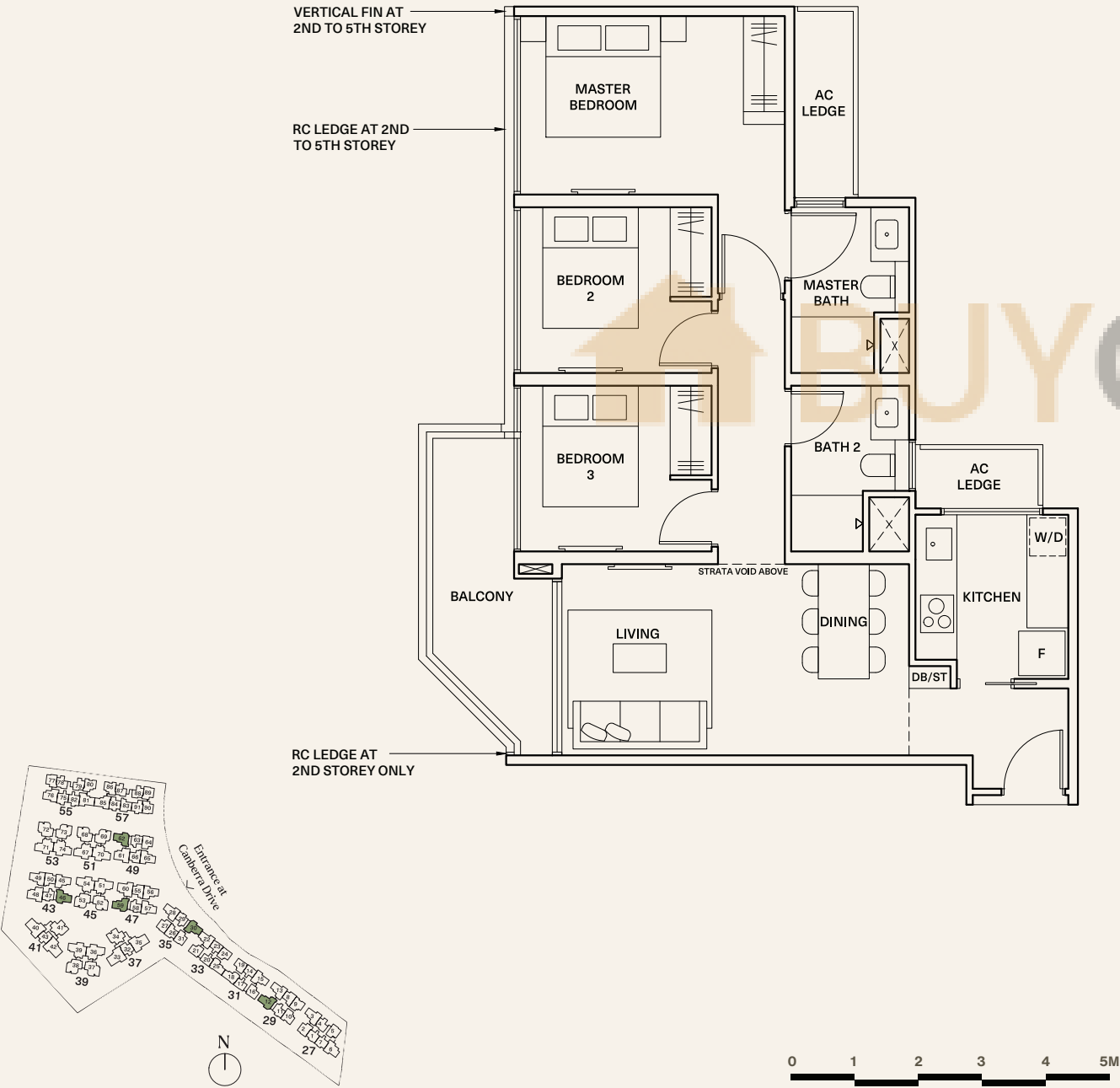
#05-12

#05-30

#05-59

#05-46\*

#05-62\*



Areas include AC ledge and balcony, where applicable. All RC ledges are non-load bearing. The plans are subjected to change as may be required by relevant authorities. All areas and measurements stated herein as approximate and subject to final survey.

3 Bedroom

TYPE 3C4

SIZE 89 sqm (958 sqft)

\*Mirror

#01-76 to #04-76

#01-06\* to #04-06\*

TYPE 3C4-PH

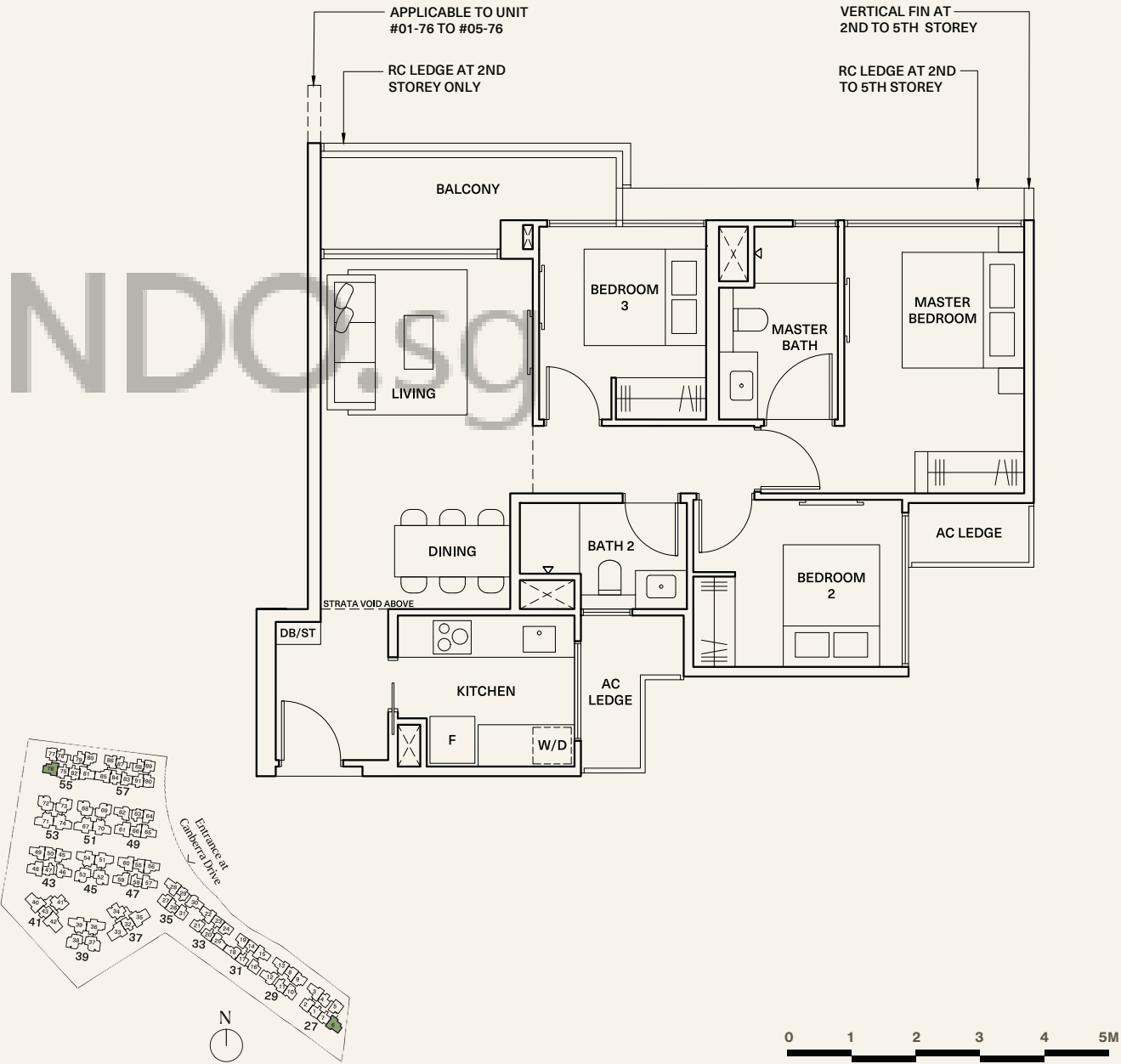
SIZE 108 sqm (1,163 sqft)

Inclusive of strata void area of 19 sqm / 205 sqft above living and dining

\*Mirror

#05-76

#05-06\*

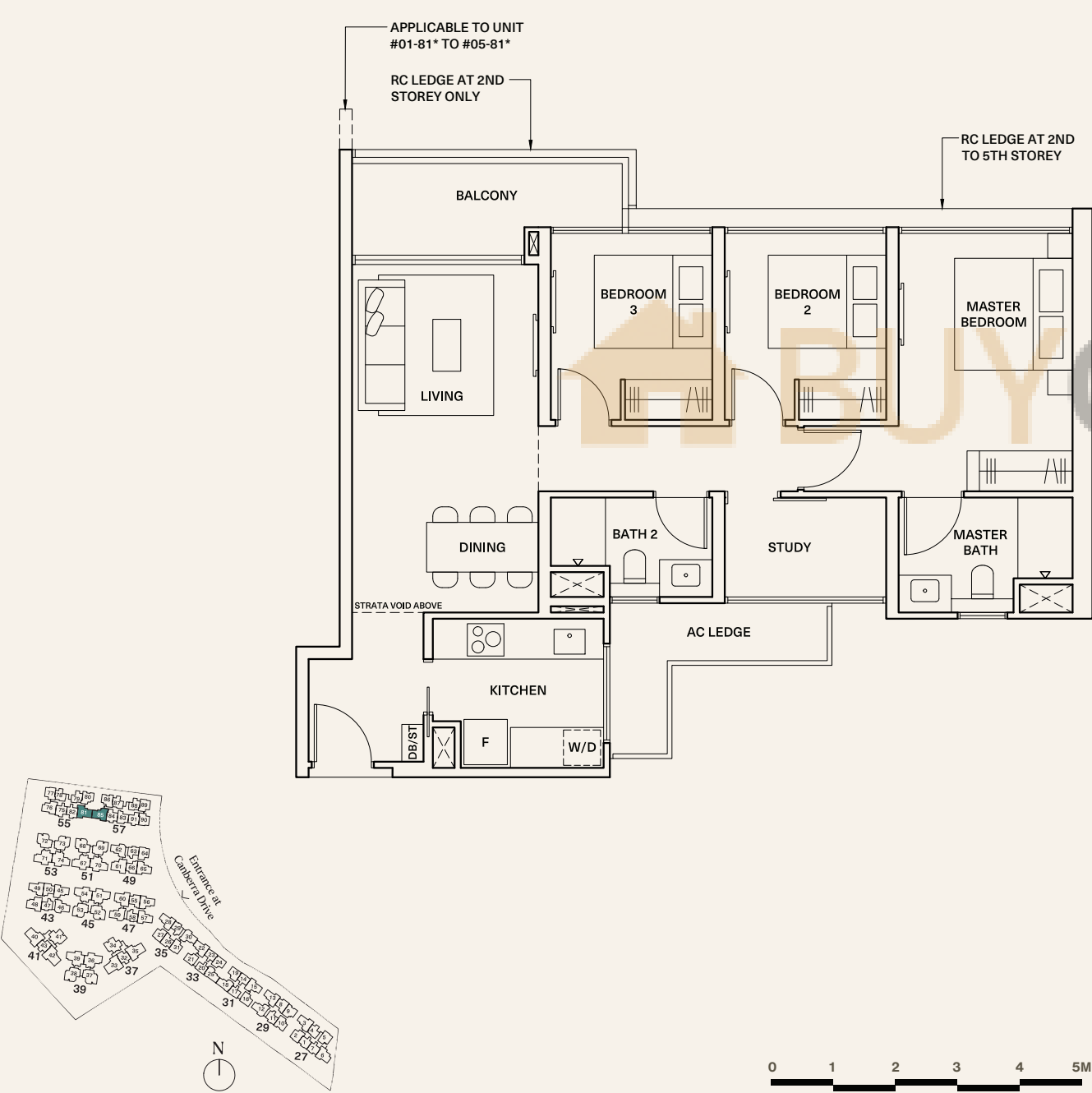


Areas include AC ledge and balcony, where applicable. All RC ledges are non-load bearing. The plans are subjected to change as may be required by relevant authorities. All areas and measurements stated herein as approximate and subject to final survey.

3 Bedroom + Study

TYPE 3CS1  
SIZE 94 sqm (1,012 sqft)  
#01-85 to #04-85  
\*Mirror  
#01-81\* to #04-81\*

TYPE 3CS1-PH  
SIZE 112 sqm (1,206 sqft)  
Inclusive of strata void area of  
18 sqm / 194 sqft above living and dining  
\*Mirror  
#05-85 #05-81\*

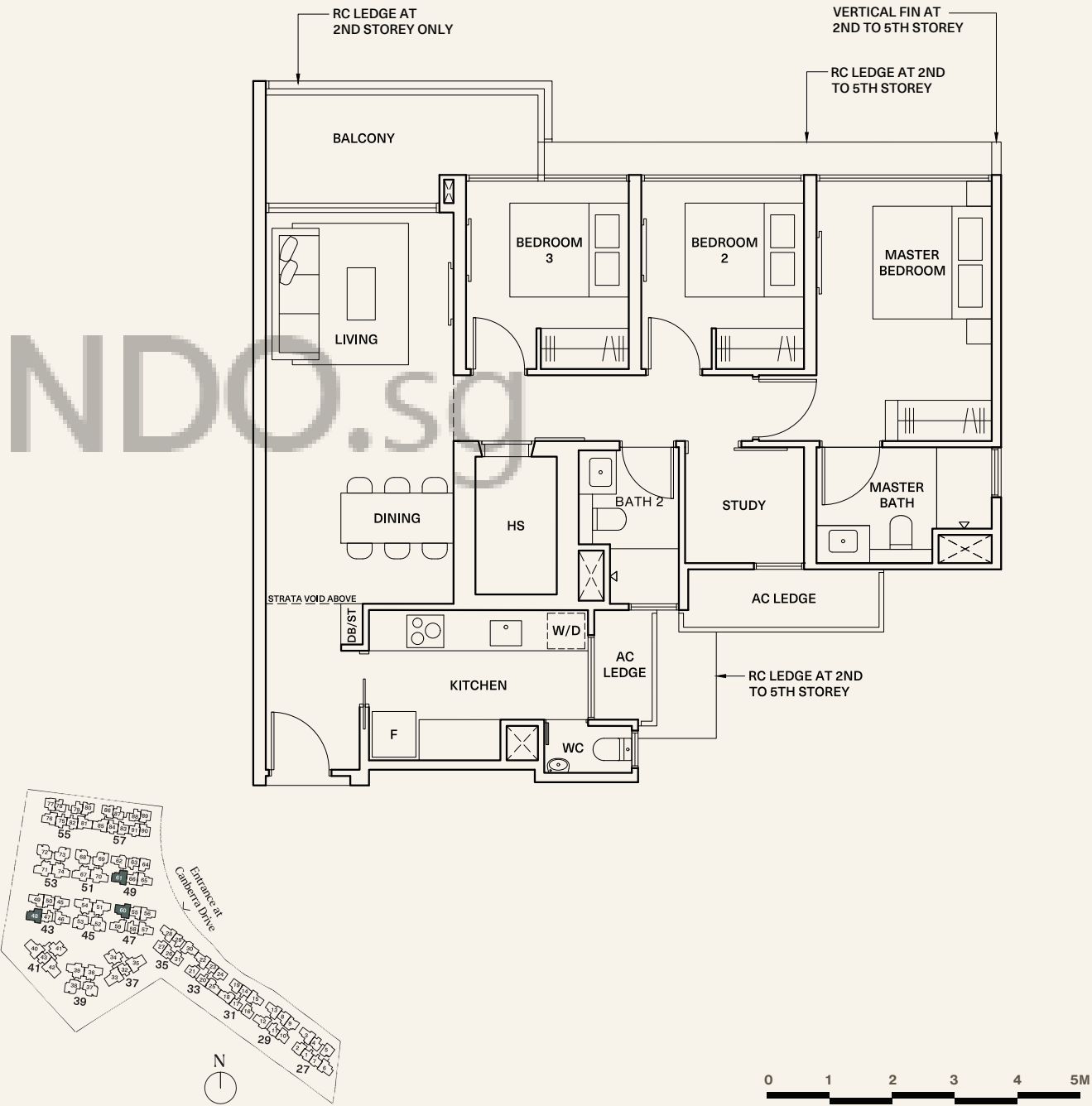


Areas include AC ledge and balcony, where applicable. All RC ledges are non-load bearing. The plans are subjected to change as may be required by relevant authorities. All areas and measurements stated herein as approximate and subject to final survey.

3 Bedroom Premium + Study

TYPE 3PS1  
SIZE 103 sqm (1,109 sqft)  
#01-48 to #04-48  
#01-61 to #04-61  
\*Mirror  
#01-60\* to #04-60\*

TYPE 3PS1-PH  
SIZE 123 sqm (1,324 sqft)  
Inclusive of strata void area of  
20 sqm / 215 sqft above living and dining  
\*Mirror  
#05-48 #05-60\*  
#05-61



Areas include AC ledge and balcony, where applicable. All RC ledges are non-load bearing. The plans are subjected to change as may be required by relevant authorities. All areas and measurements stated herein as approximate and subject to final survey.

3 Bedroom Premium + Study

TYPE 3PS2-P

SIZE 103 sqm (1,109 sqft)

	*Mirror
#01-38	#01-37*

TYPE 3PS2

SIZE 103 sqm (1,109 sqft)

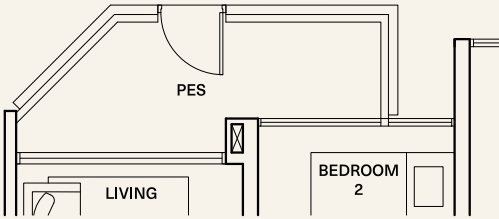
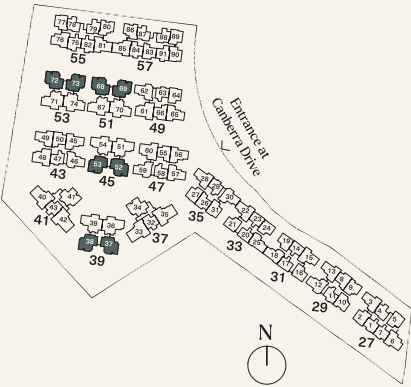
	*Mirror
#02-38 to #04-38	#02-37* to #04-37*
#01-53 to #04-53	#01-52* to #04-52*
#01-69 to #04-69	#01-68* to #04-68*
#01-73 to #04-73	#01-72* to #04-72*

TYPE 3PS2-PH

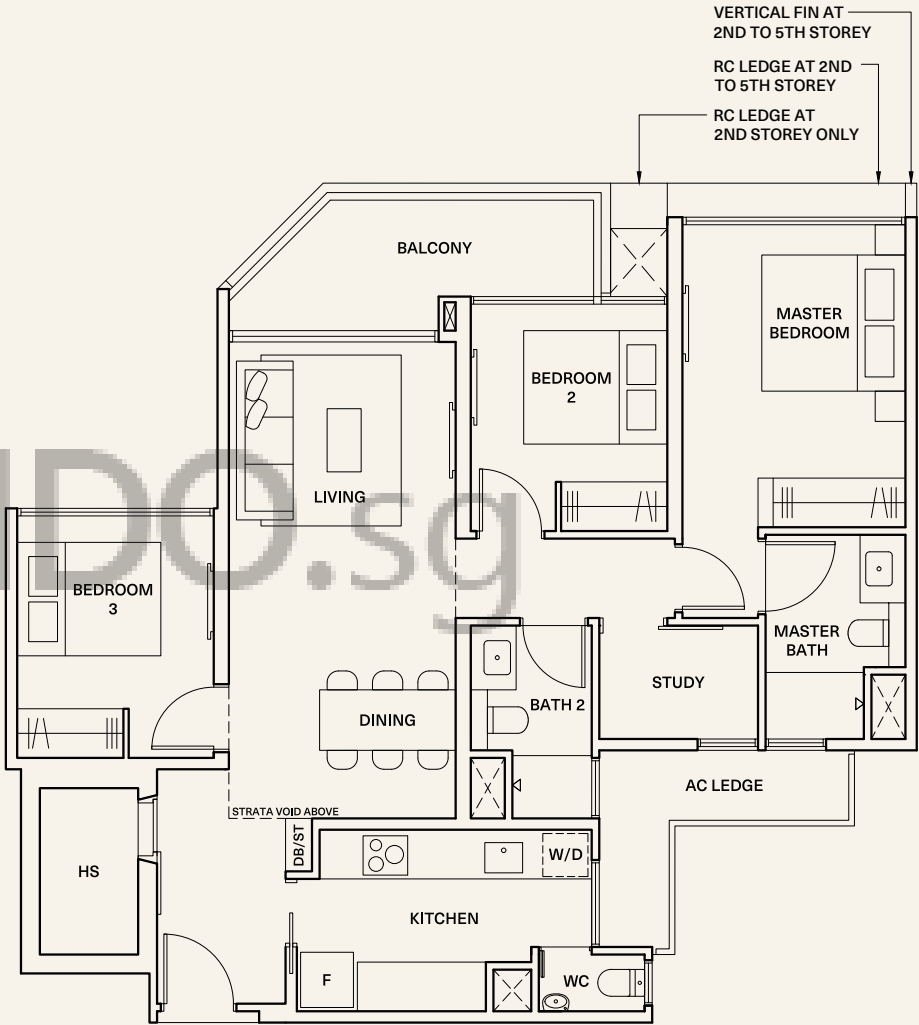
SIZE 123 sqm (1,324 sqft)

Inclusive of strata void area of  
20 sqm / 215 sqft above living and dining

	*Mirror
#05-38	#05-37*
#05-53	#05-52*
#05-69	#05-68*
#05-73	#05-72*



Applicable to unit:  
#01-37\* & #01-38



Areas include AC ledge and balcony, where applicable. All RC ledges are non-load bearing. The plans are subjected to change as may be required by relevant authorities. All areas and measurements stated herein as approximate and subject to final survey.

3 Bedroom Premium + Study

TYPE 3PS3

SIZE 103 sqm (1,109 sqft)

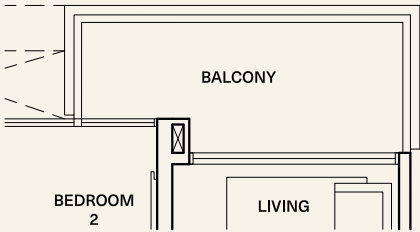
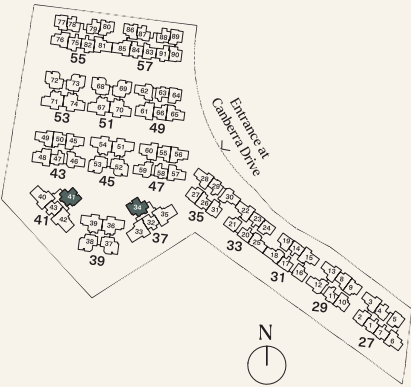
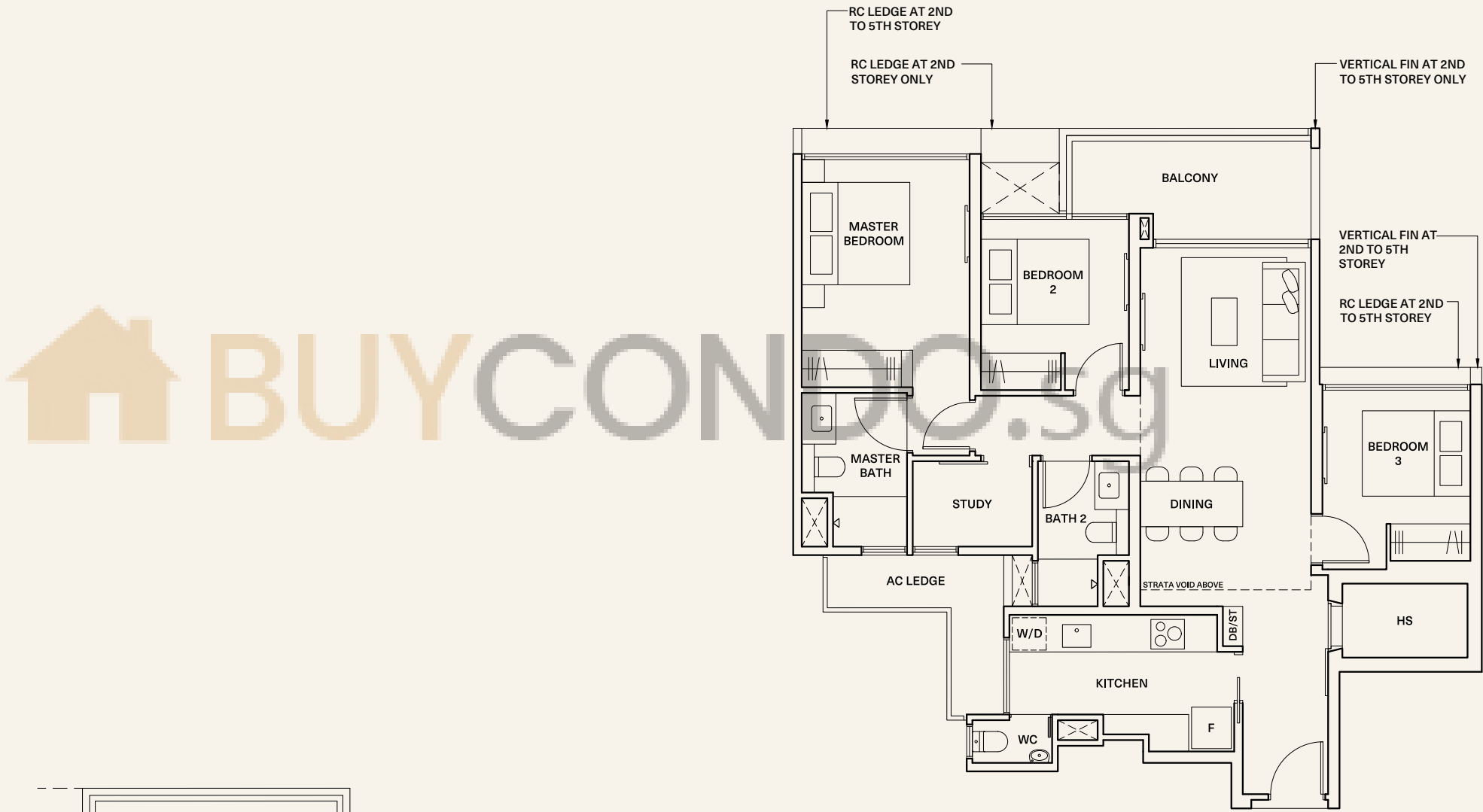
#01-34 to #04-34      \*Mirror  
#01-41\* to #04-41\*

TYPE 3PS3-PH

SIZE 122 sqm (1,313 sqft)

Inclusive of strata void area of  
19 sqm / 205 sqft above living and dining

#05-34      \*Mirror  
#05-41\*



Applicable to unit:  
#01-34 & #01-41\*



Areas include AC ledge and balcony, where applicable. All RC ledges are non-load bearing. The plans are subjected to change as may be required by relevant authorities. All areas and measurements stated herein as approximate and subject to final survey.

4 Bedroom Premium

TYPE 4P1

SIZE 121 sqm (1,302 sqft)

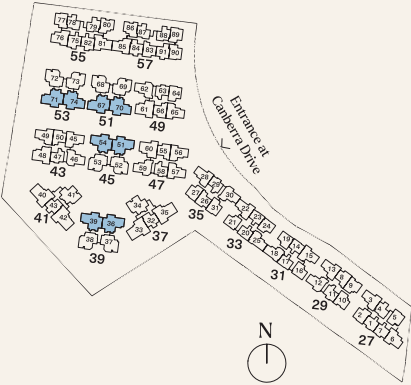
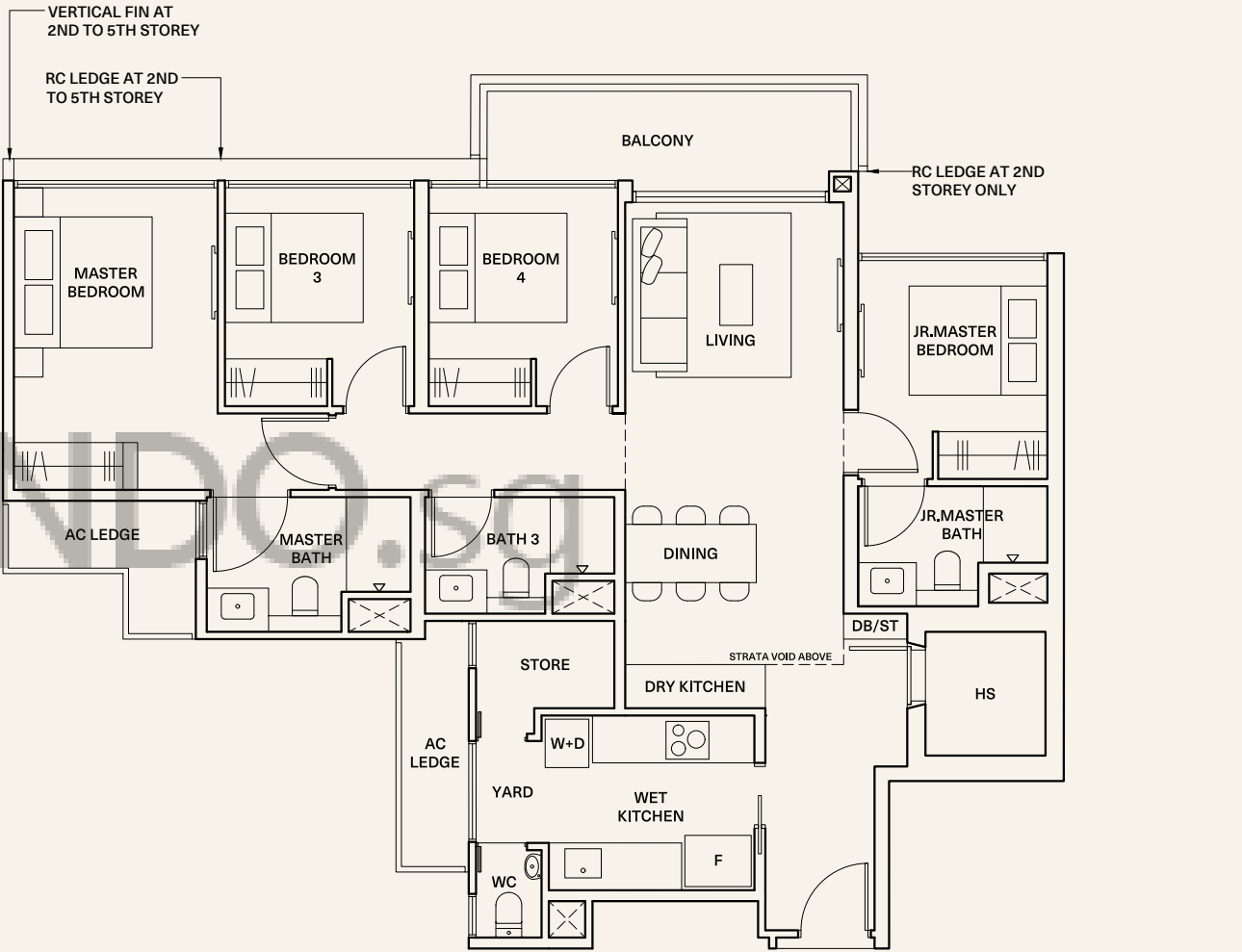
	*Mirror
#01-39 to #04-39	#01-36* to #04-36*
#01-54 to #04-54	#01-51* to #04-51*
#01-70 to #04-70	#01-67* to #04-67*
#01-74 to #04-74	#01-71* to #04-71*

TYPE 4P1-PH

SIZE 142 sqm (1,528 sqft)

Inclusive of strata void area of  
21 sqm / 226 sqft above living and dining

	*Mirror
#05-39	#05-36*
#05-54	#05-51*
#05-70	#05-67*
#05-74	#05-71*



Areas include AC ledge and balcony, where applicable. All RC ledges are non-load bearing. The plans are subjected to change as may be required by relevant authorities. All areas and measurements stated herein as approximate and subject to final survey.

4 Bedroom Premium

TYPE 4P2

SIZE 121 sqm (1,302 sqft)

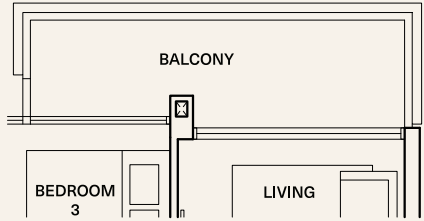
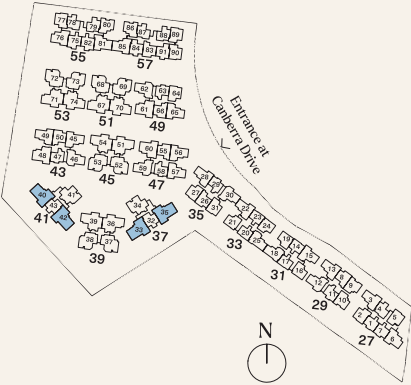
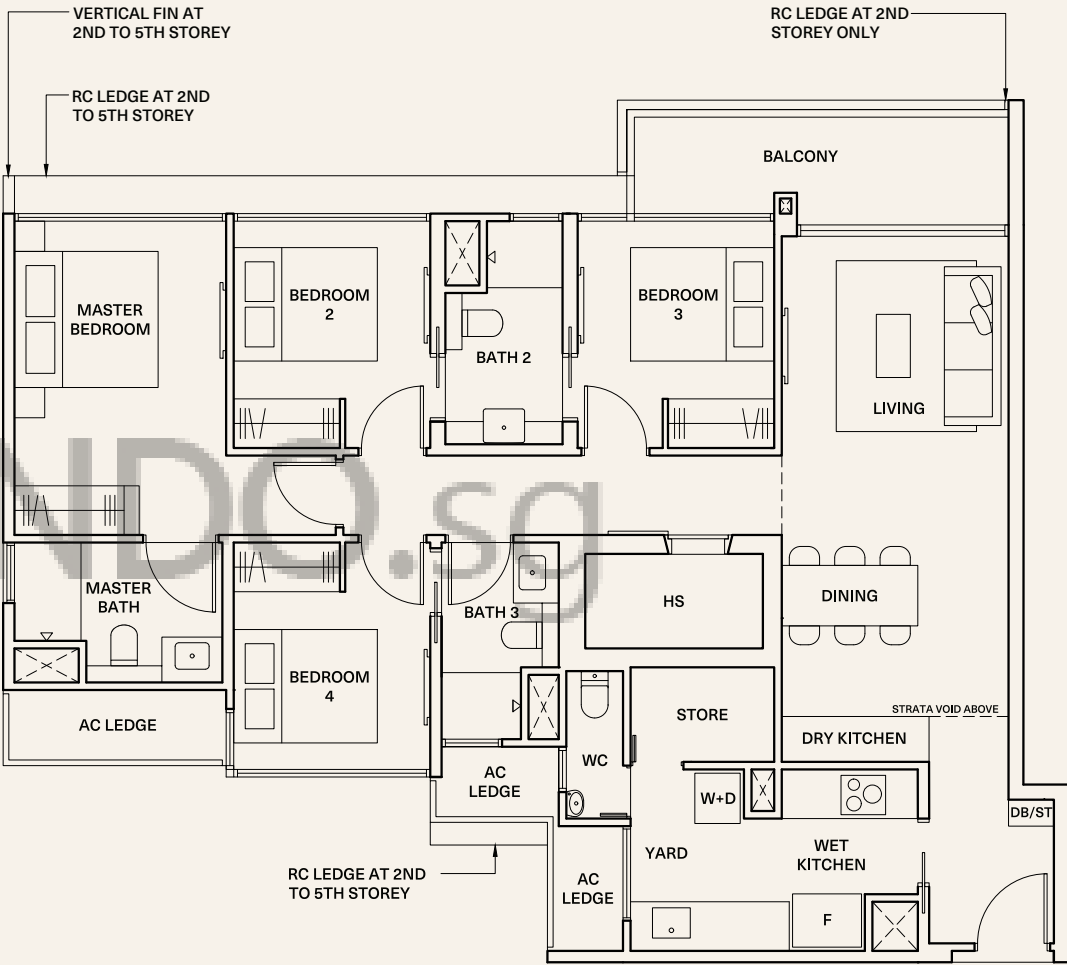
	*Mirror
#01-35 to #04-35	#01-33* to #04-33*
#01-42 to #04-42	#01-40* to #04-40*

TYPE 4P2-PH

SIZE 142 sqm (1,528 sqft)

Inclusive of strata void area of  
21 sqm / 226 sqft above living and dining

	*Mirror
#05-35	#05-33*
#05-42	#05-40*



Applicable to unit:  
#01-33\*, #01-35, #01-40\* and #01-42

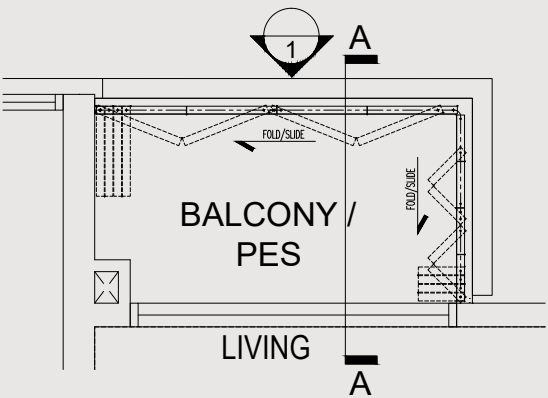


Areas include AC ledge and balcony, where applicable. All RC ledges are non-load bearing. The plans are subjected to change as may be required by relevant authorities. All areas and measurements stated herein as approximate and subject to final survey.

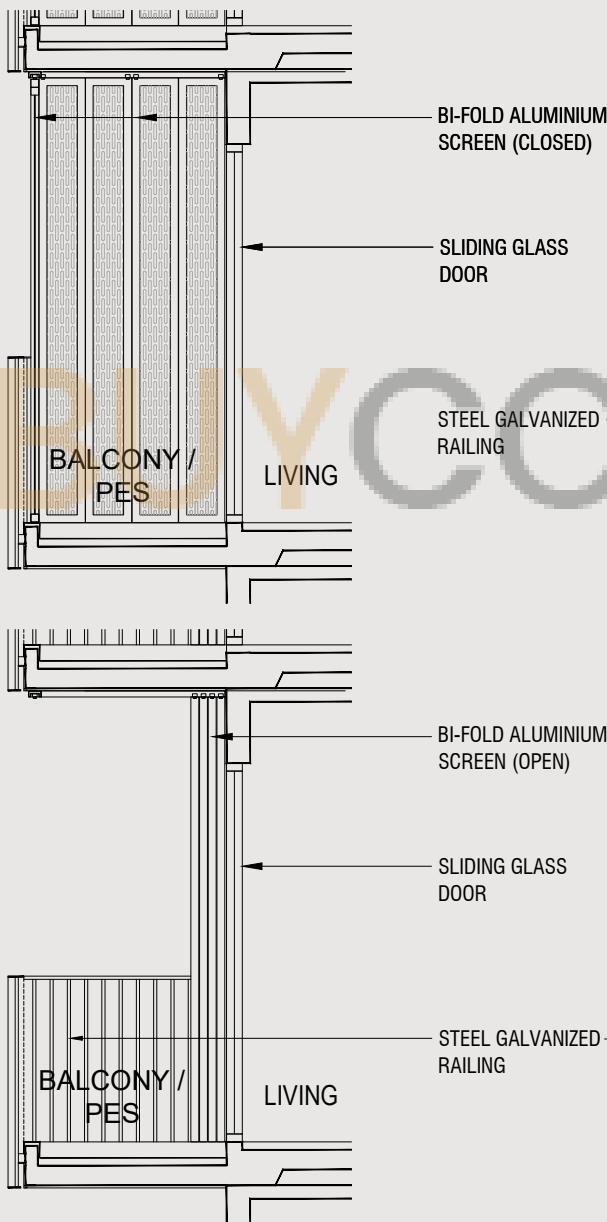
# Annexure A

## Approved Balcony / PES Screen

Typical Plan of Balcony / PES Screen



Section A-A  
(Typical Section of Balcony / PES With Screen)



Elevation 1  
(Typical Elevation of Balcony / PES Screen)

