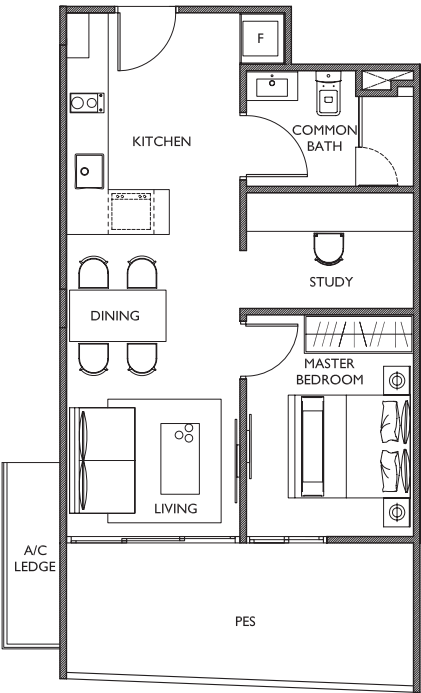


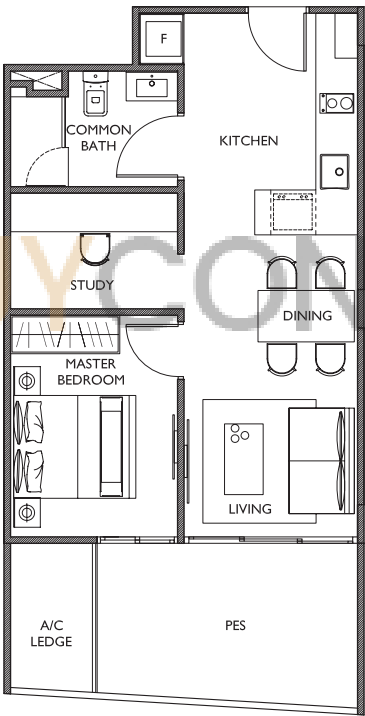
# TYPE AZI

## I + I BEDROOM

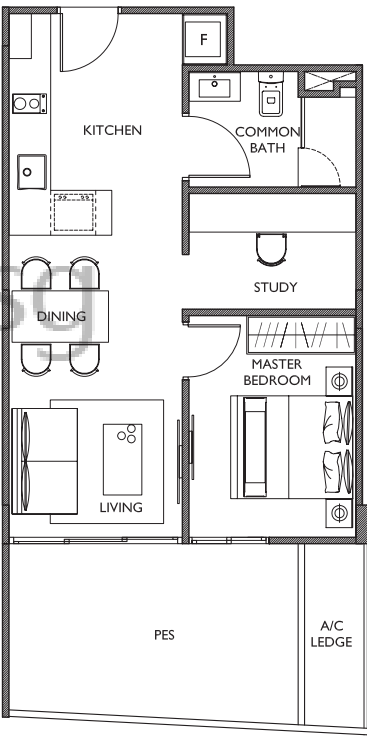
With PES #01-16 (635 sqft)



With PES #01-15 (635 sqft)



With PES #01-14 (657 sqft)

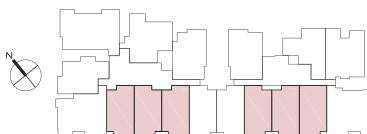
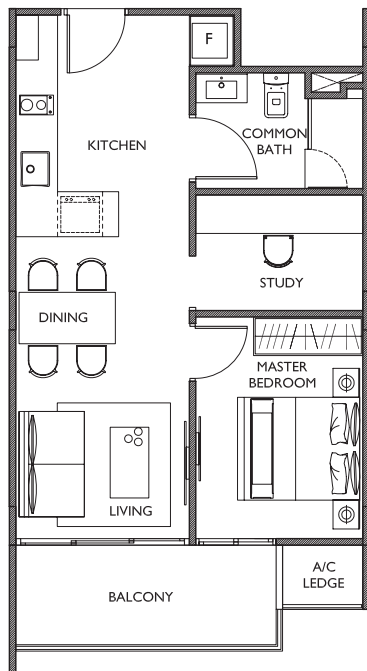


Floor areas are inclusive of balconies, private enclosed spaces, aircon ledges and voids. Floor areas are approximate measurements and subject to final survey. The plans are subject to changes as required or approved by relevant authorities.

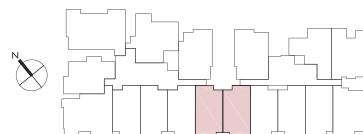
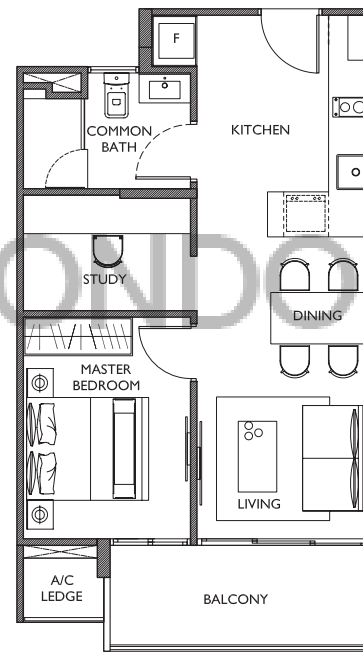
# TYPE AZI

## I + I BEDROOM

#02-05 to #05-05 (MIRROR) (560 sqft)  
#02-06 to #05-06  
#02-07 to #05-07 (MIRROR)  
#02-14 to #05-14  
#02-15 to #05-15 (MIRROR)  
#02-16 to #05-16



#02-04 to #05-04 (MIRROR) (560 sqft)  
#02-17 to #05-17



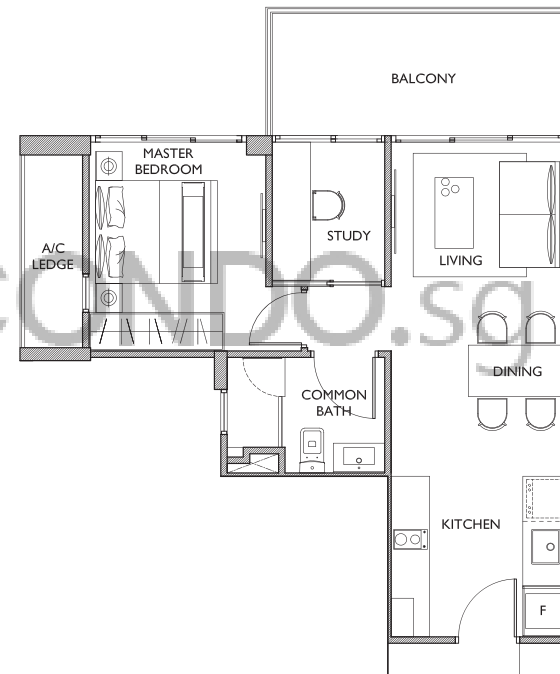
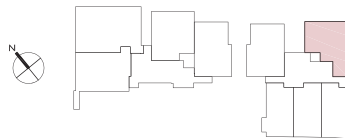
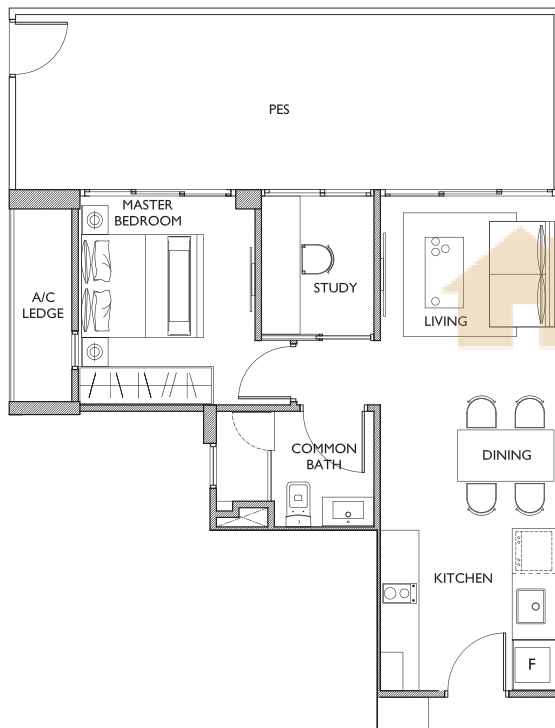
Floor areas are inclusive of balconies, private enclosed spaces, aircon ledges and voids. Floor areas are approximate measurements and subject to final survey. The plans are subject to changes as required or approved by relevant authorities.

# TYPE AZ2

## I + I BEDROOM

With PES #01-11 (775 sqft)

#02-11 to #04-11 (624 sqft)



Floor areas are inclusive of balconies, private enclosed spaces, aircon ledges and voids. Floor areas are approximate measurements and subject to final survey. The plans are subject to changes as required or approved by relevant authorities.

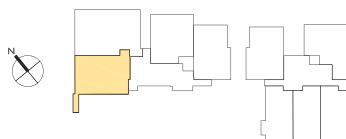
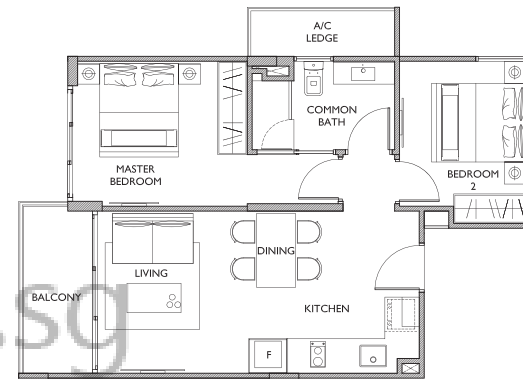
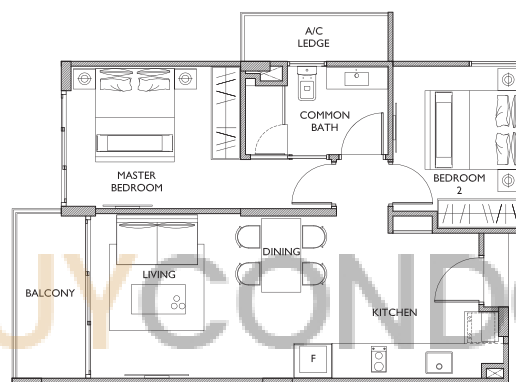
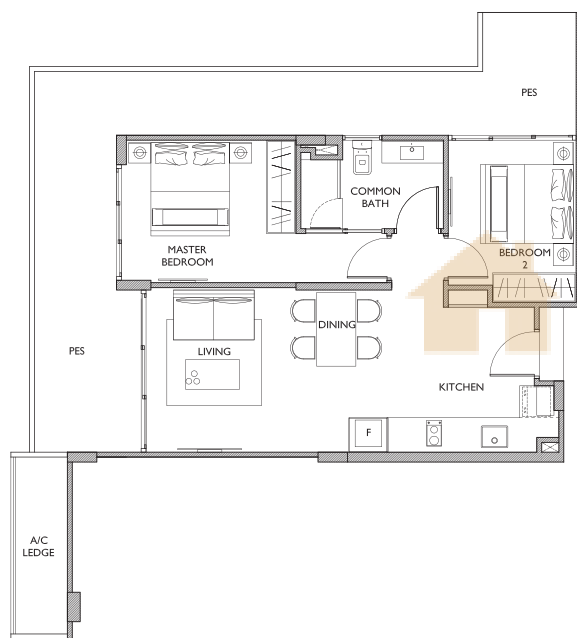
# TYPE B1

## 2 BEDROOM

With PES #01-09 (1,001 sqft)

#02-09 (710 sqft)

#03-09 to #05-09 (646 sqft)

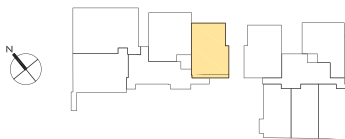
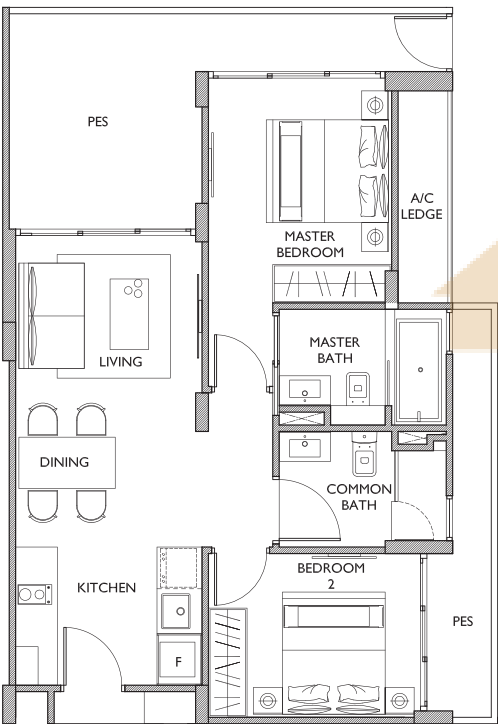


Floor areas are inclusive of balconies, private enclosed spaces, aircon ledges and voids. Floor areas are approximate measurements and subject to final survey. The plans are subject to changes as required or approved by relevant authorities.

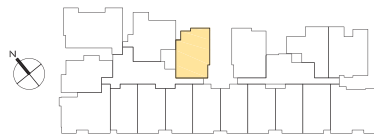
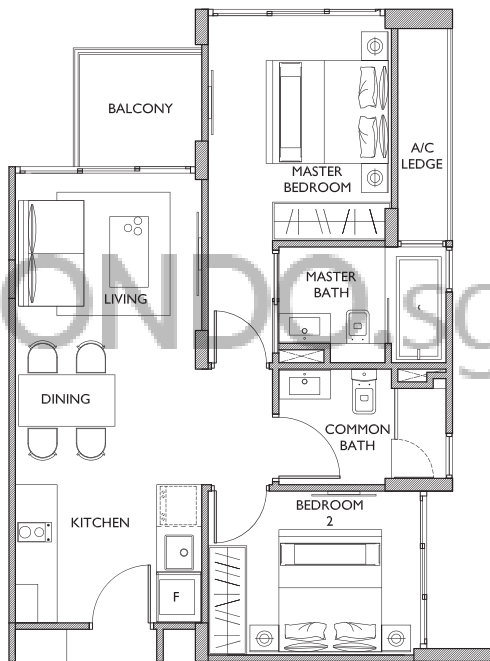
# TYPE B2

## 2 BEDROOM

With PES #01-03 (850 sqft)



#02-03 to #05-03 (678 sqft)



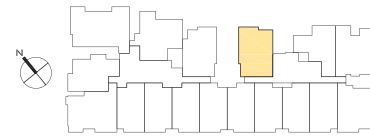
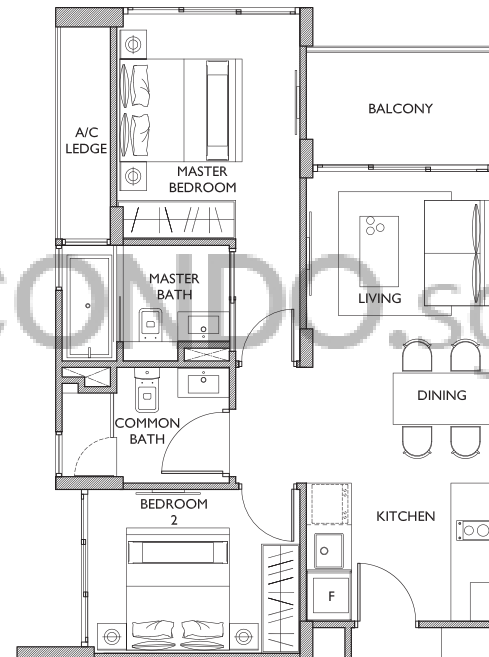
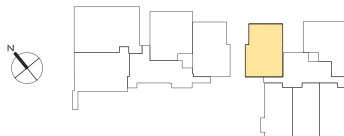
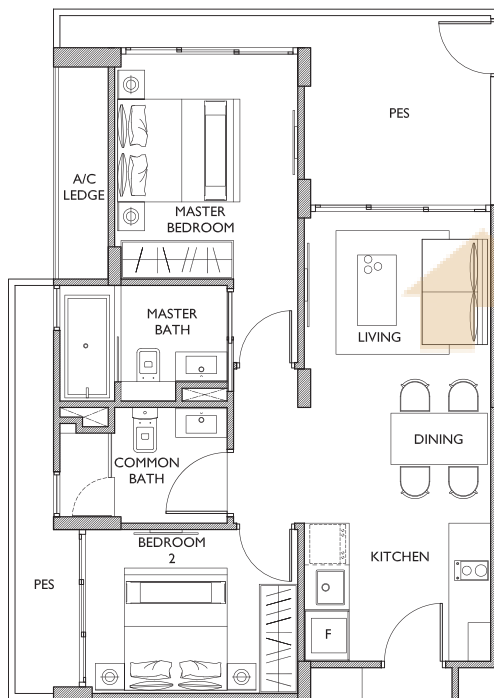
Floor areas are inclusive of balconies, private enclosed spaces, aircon ledges and voids. Floor areas are approximate measurements and subject to final survey. The plans are subject to changes as required or approved by relevant authorities.

# TYPE B3

## 2 BEDROOM

With PES #01-10 (818 sqft)

#02-10 to #05-10 (700 sqft)

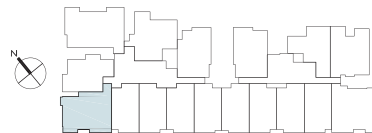
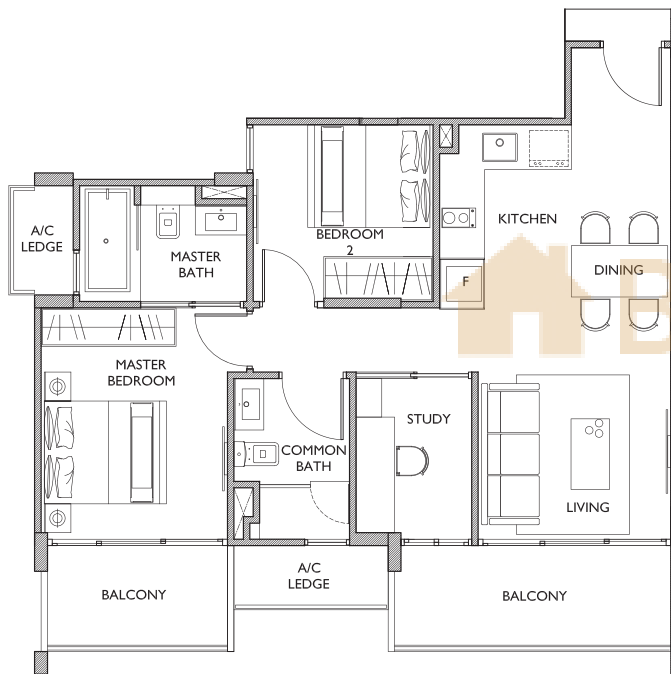


Floor areas are inclusive of balconies, private enclosed spaces, aircon ledges and voids. Floor areas are approximate measurements and subject to final survey. The plans are subject to changes as required or approved by relevant authorities.

# TYPE BZ1

## 2 + 1 BEDROOM

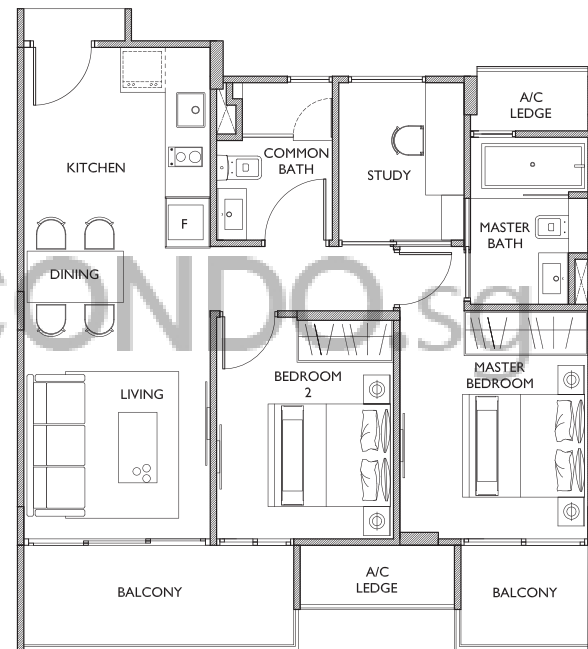
#03-08 to #05-08 (861 sqft)



# TYPE BZ2

## 2 + 1 BEDROOM

#02-13 to #05-13 (861 sqft)

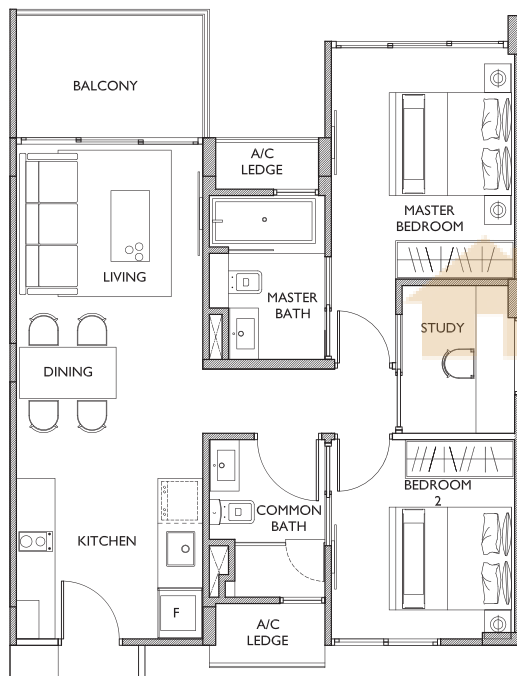


Floor areas are inclusive of balconies, private enclosed spaces, aircon ledges and voids. Floor areas are approximate measurements and subject to final survey. The plans are subject to changes as required or approved by relevant authorities.

# TYPE BZ3

## 2 + 1 BEDROOM

#02-12 to #05-12 (786 sqft)



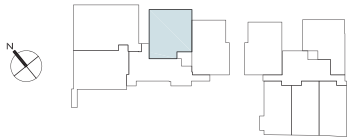
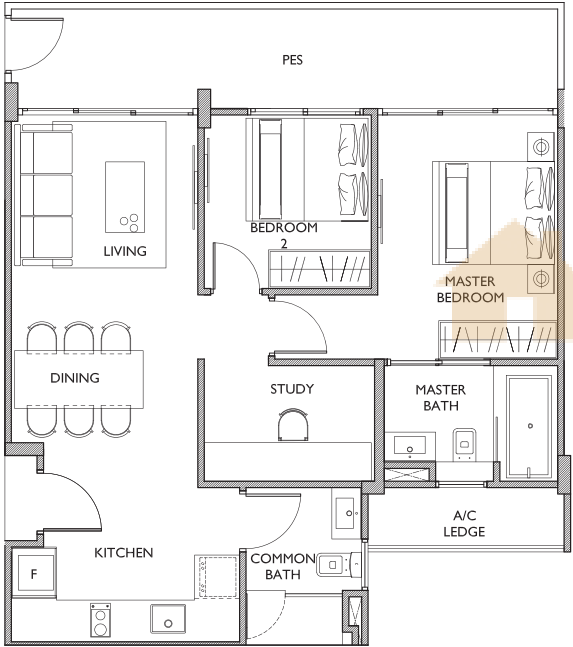
Floor areas are inclusive of balconies, private enclosed spaces, aircon ledges and voids. Floor areas are approximate measurements and subject to final survey. The plans are subject to changes as required or approved by relevant authorities.



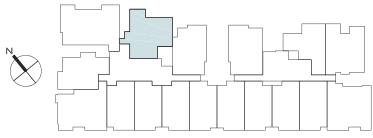
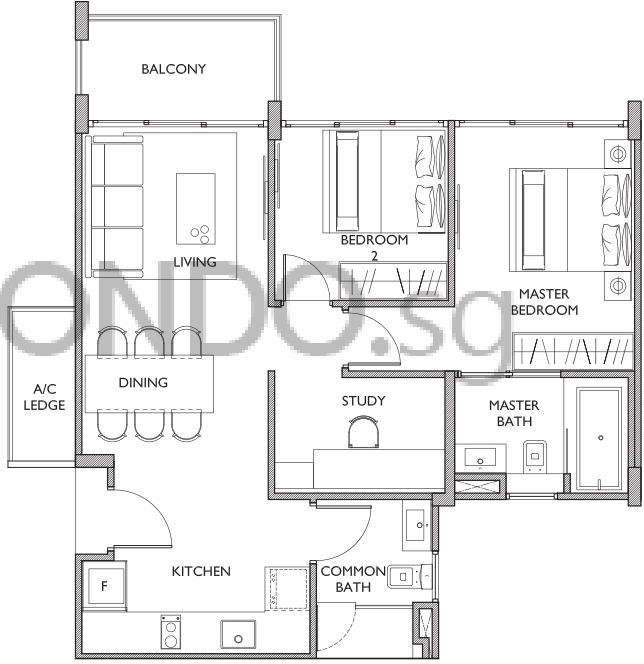
# TYPE BZ4

## 2 + 1 BEDROOM

With PES #01-02 (883 sqft)



#02-02 to #05-02 (786 sqft)



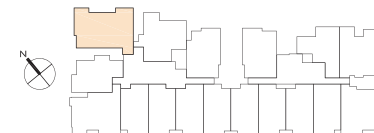
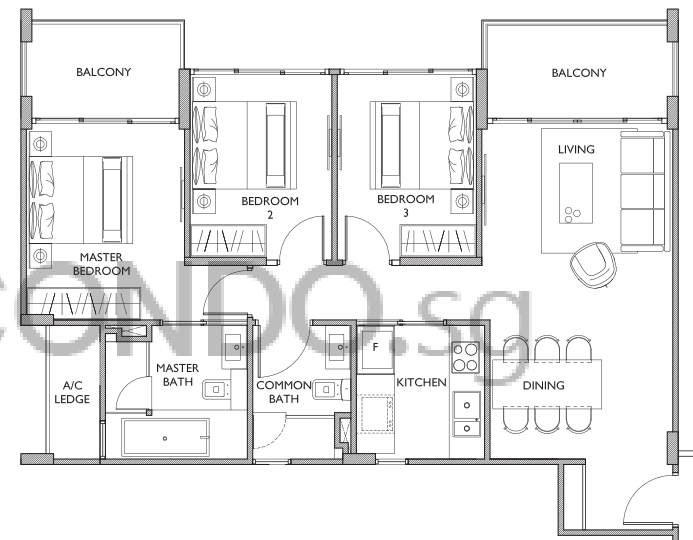
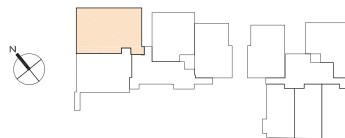
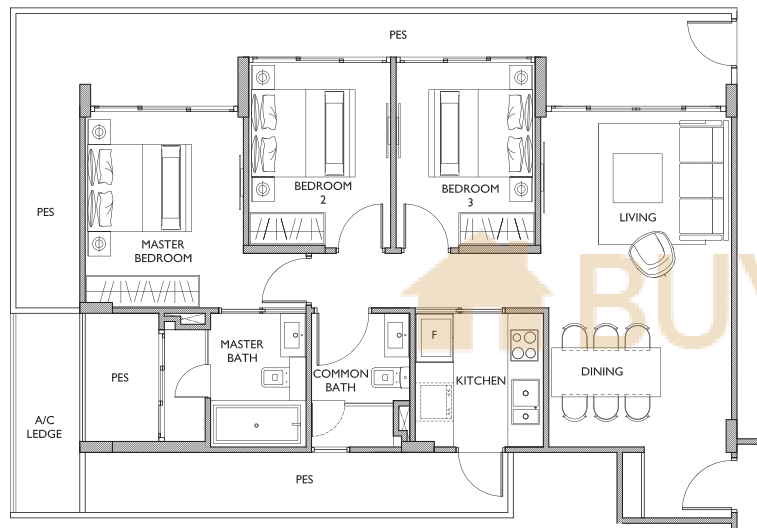
Floor areas are inclusive of balconies, private enclosed spaces, aircon ledges and voids. Floor areas are approximate measurements and subject to final survey. The plans are subject to changes as required or approved by relevant authorities.

# TYPE C

## 3 BEDROOM

With PES #01-01 (1,302 sqft)

#02-01 to #05-01 (1,001 sqft)



Floor areas are inclusive of balconies, private enclosed spaces, aircon ledges and voids. Floor areas are approximate measurements and subject to final survey. The plans are subject to changes as required or approved by relevant authorities.