



## TYPE 1A/1B

Dual Key

#02-05, #03-05, #04-05

Saleable Area: 91 sq m



# TYPE 2

2-Bedroom

#02-06, #03-06, #04-06, #05-06

Saleable Area: 71 sq m



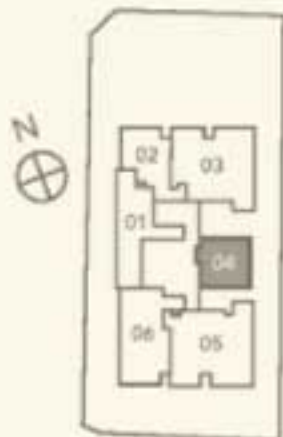


### TYPE 3

Studio

#02-04, #03-04, #04-04, #05-04

Saleable Area: 37 sq m



## TYPE 4

2-Bedroom

#02-01, #03-01, #04-01

Saleable Area: 55 sq m





## TYPE 5

1-Bedroom

#02-02, #03-02, #04-02

Saleable Area: 44 sq m





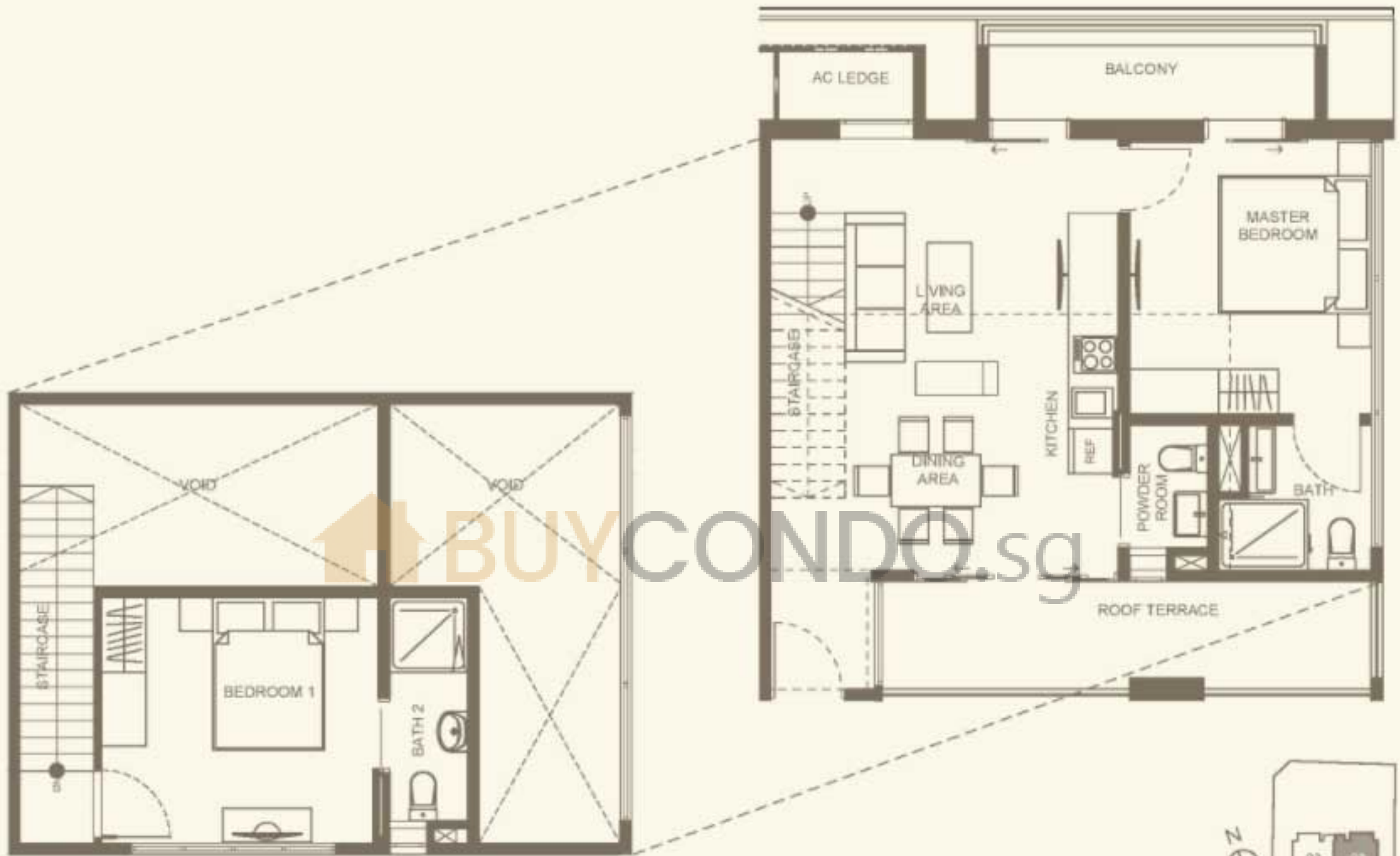
## TYPE 6A/6B

Dual Key

#02-03, #03-03, #04-03

Saleable Area: 87 sq m





## TYPE PH1

Penthouse

#05-03

Saleable Area: 120 sq m





## TYPE PH2

Penthouse

#05-02

Saleable Area: 116 sq m