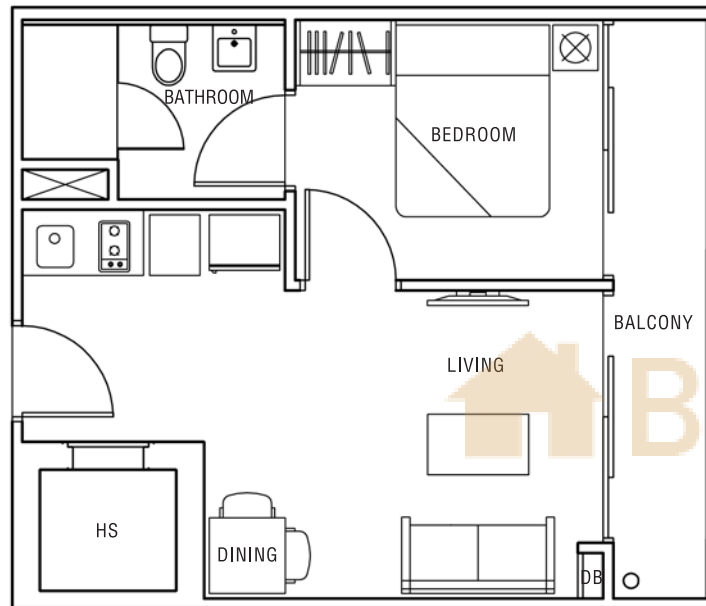


TYPE A1 (1-BEDROOM)

#02-04 to #07-04, #02-05 to #07-05
#02-06 to #07-06

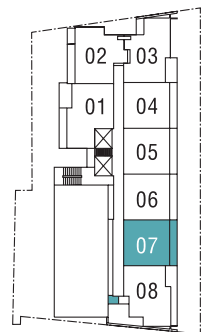
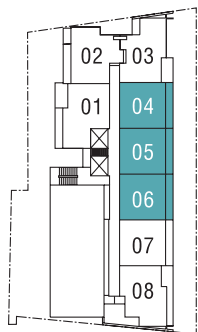
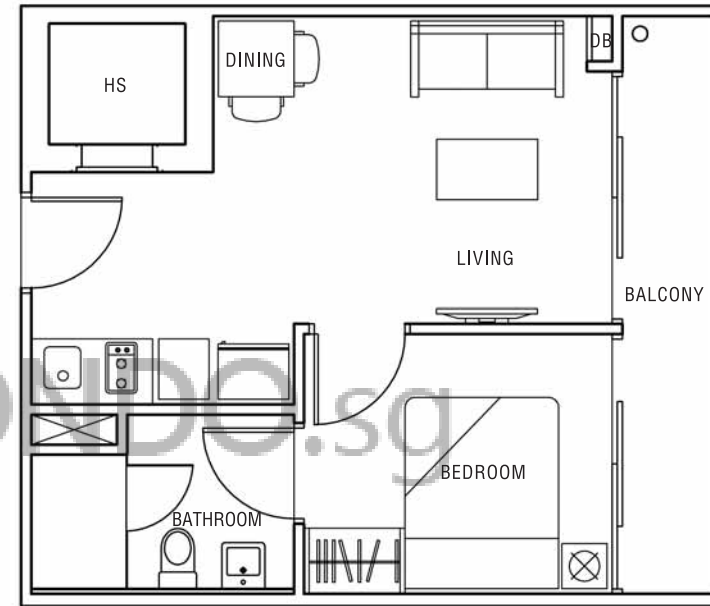
Area 40 sq m / 431 sq ft
(Inclusive of Balcony)



TYPE A1-A (1-BEDROOM)

#02-07 to #07-07

Area 41 sq m / 441 sq ft
(Inclusive of Balcony & A/C Ledge)

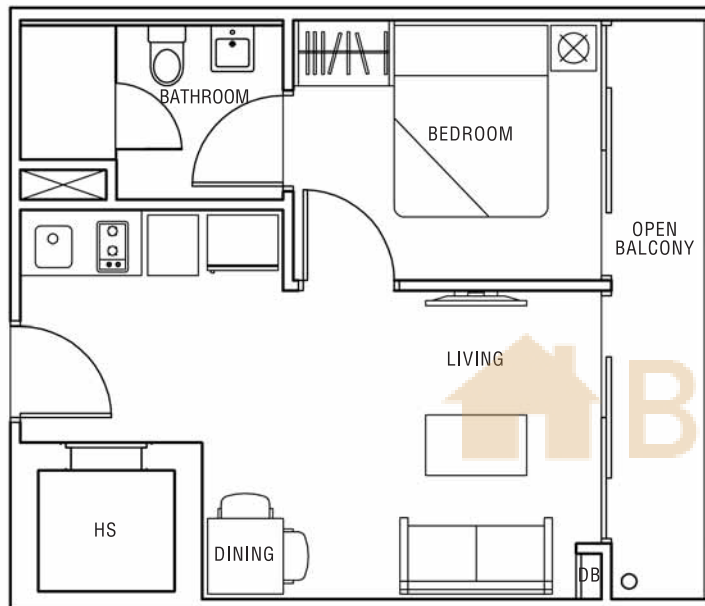


All plans are subjected to amendments as approved by the relevant authorities. Floor areas are approximate measurements and subject to final survey.

TYPE A1-R (1-BEDROOM)

#08-04 & #08-05

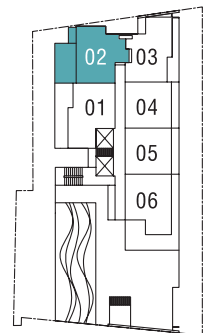
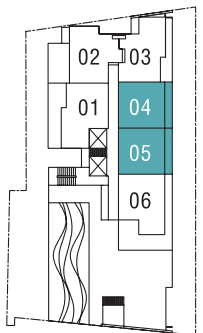
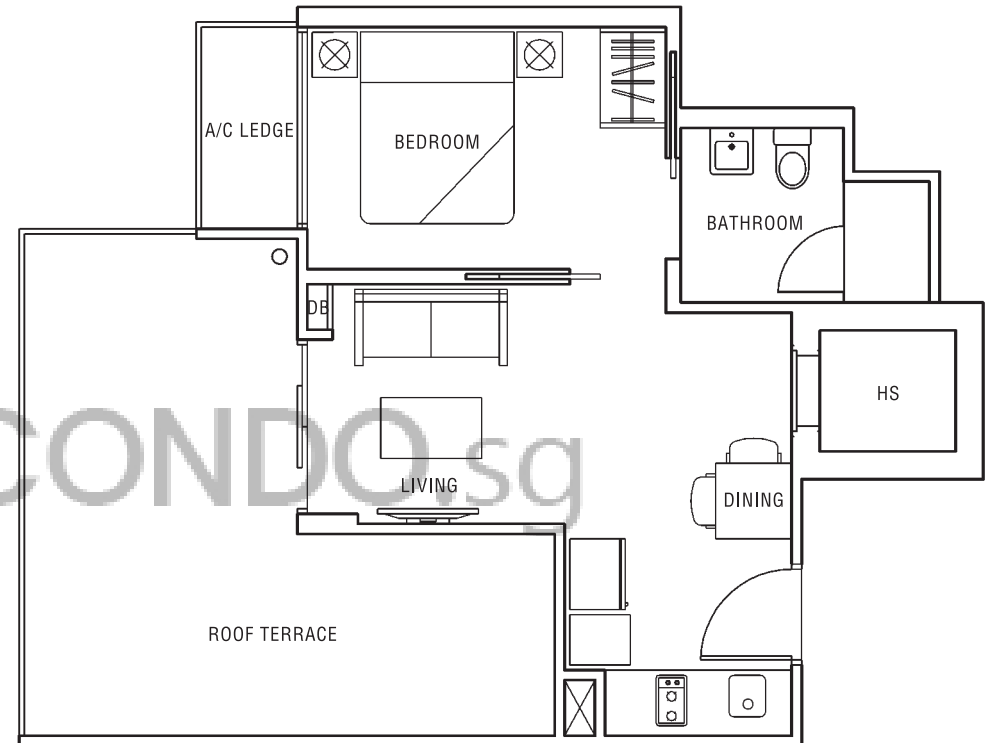
Area 40 sq m / 431 sq ft
(Inclusive of Open Balcony)



TYPE A2-R (1-BEDROOM)

#08-02

Area 55 sq m / 592 sq ft
(Inclusive of Roof Terrace & A/C Ledge)

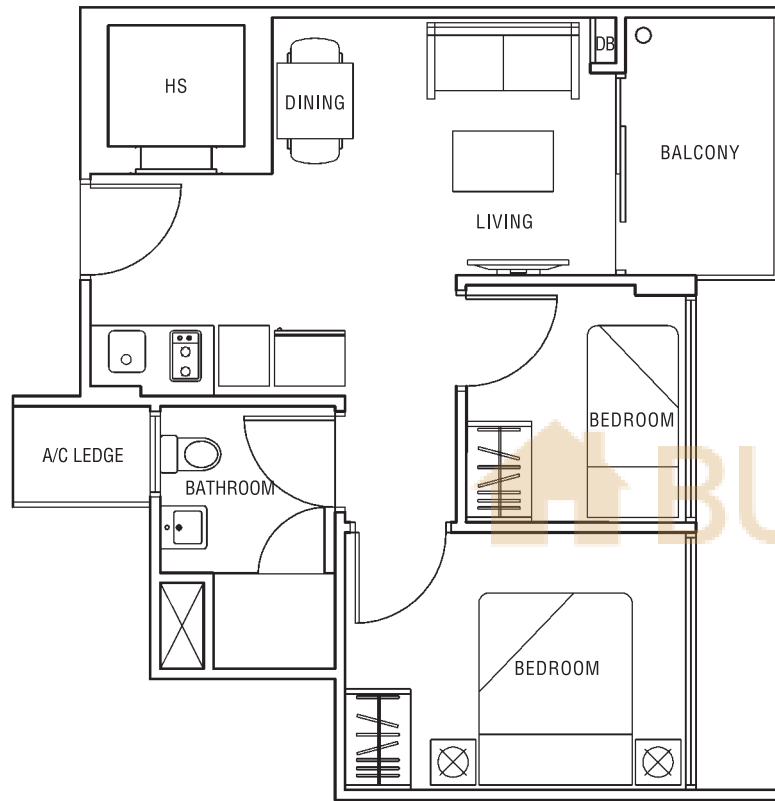


All plans are subjected to amendments as approved by the relevant authorities. Floor areas are approximate measurements and subject to final survey.

TYPE B1 (2-BEDROOM)

#02-08 to #06-08

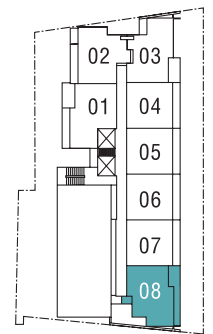
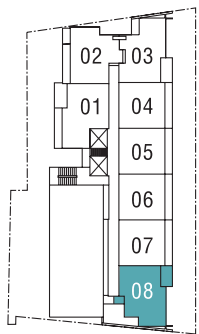
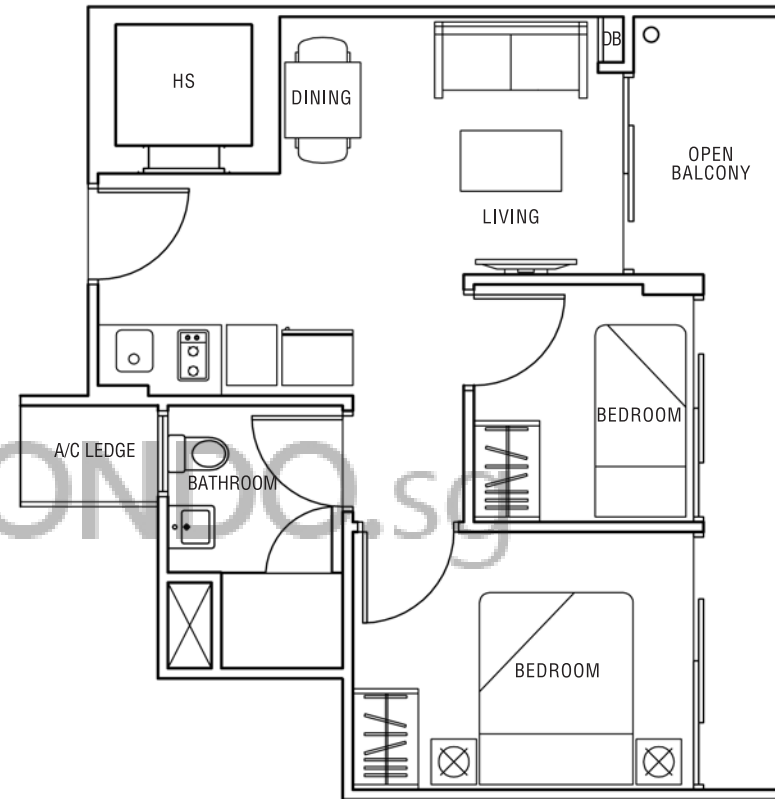
Area 45 sq m / 484 sq ft
(Inclusive of Balcony and A/C Ledge)



TYPE B1-R (2-BEDROOM)

#07-08

Area 49 sq m / 527 sq ft
(Inclusive of Open Balcony and A/C Ledge)



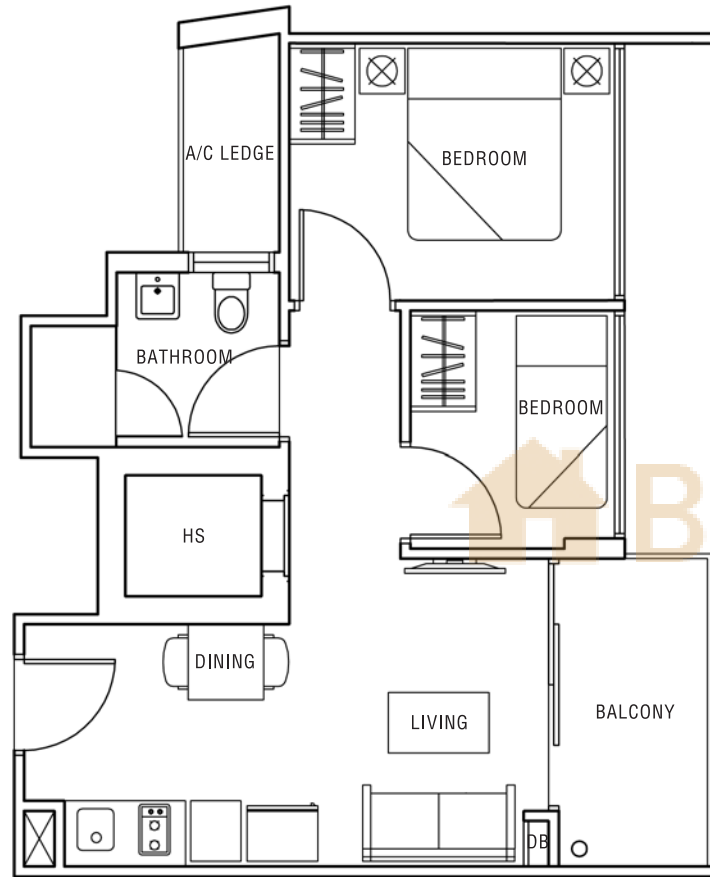
All plans are subjected to amendments as approved by the relevant authorities. Floor areas are approximate measurements and subject to final survey.

TYPE B2 (2-BEDROOM)

#02-03 to #07-03

Area 48 sq m / 517 sq ft

(Inclusive of Balcony & A/C Ledge)

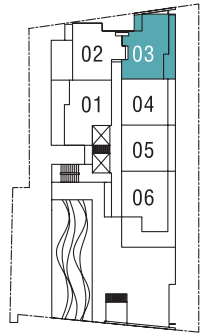
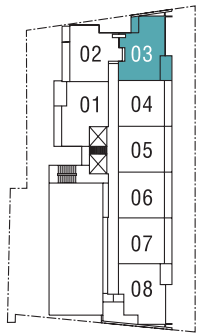
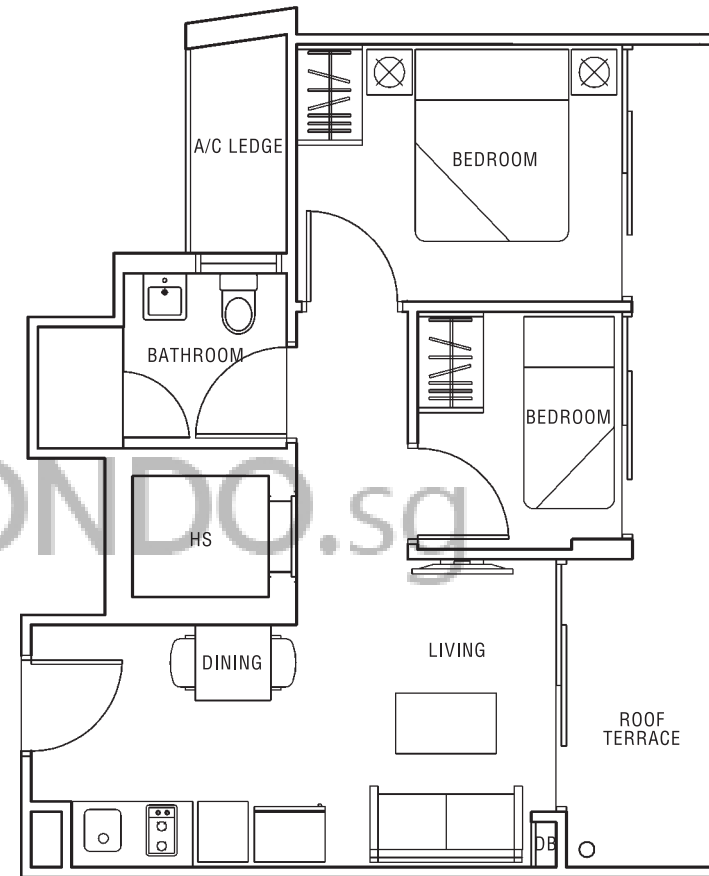


TYPE B2-R (2-BEDROOM)

#08-03

Area 51 sq m / 549 sq ft

(Inclusive of Roof Terrace & A/C Ledge)



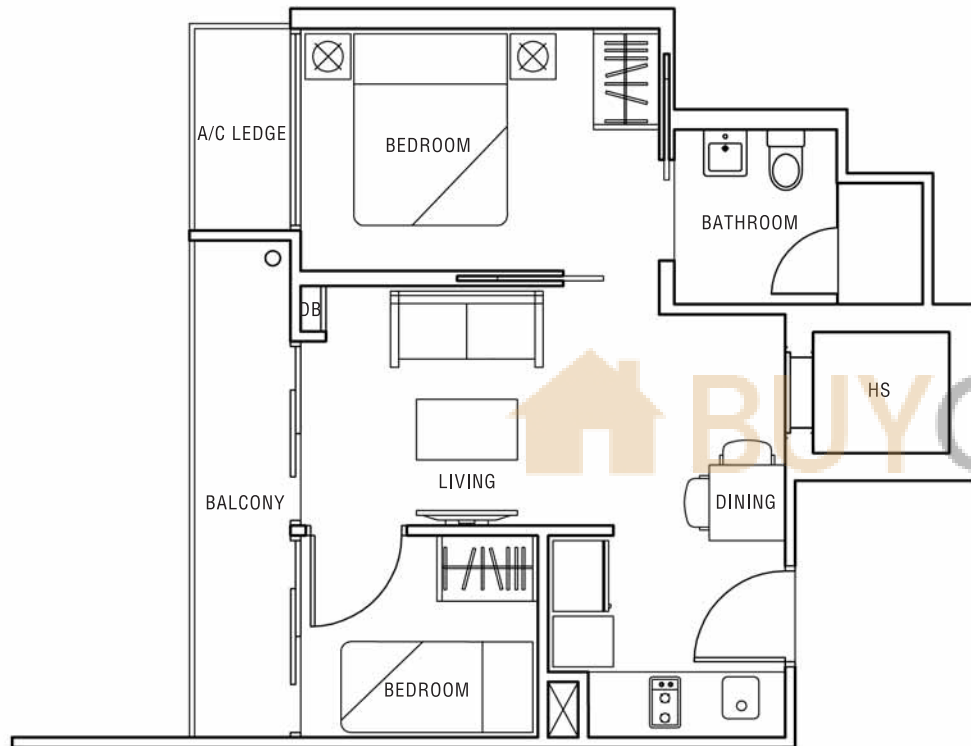
All plans are subjected to amendments as approved by the relevant authorities. Floor areas are approximate measurements and subject to final survey.

TYPE B3 (2-BEDROOM)

#02-02 to #07-02

Area 47 sq m / 506 sq ft

(Inclusive of Balcony & A/C Ledge)

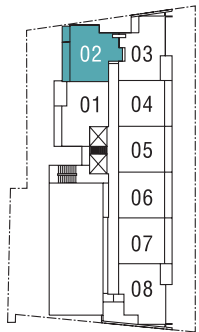
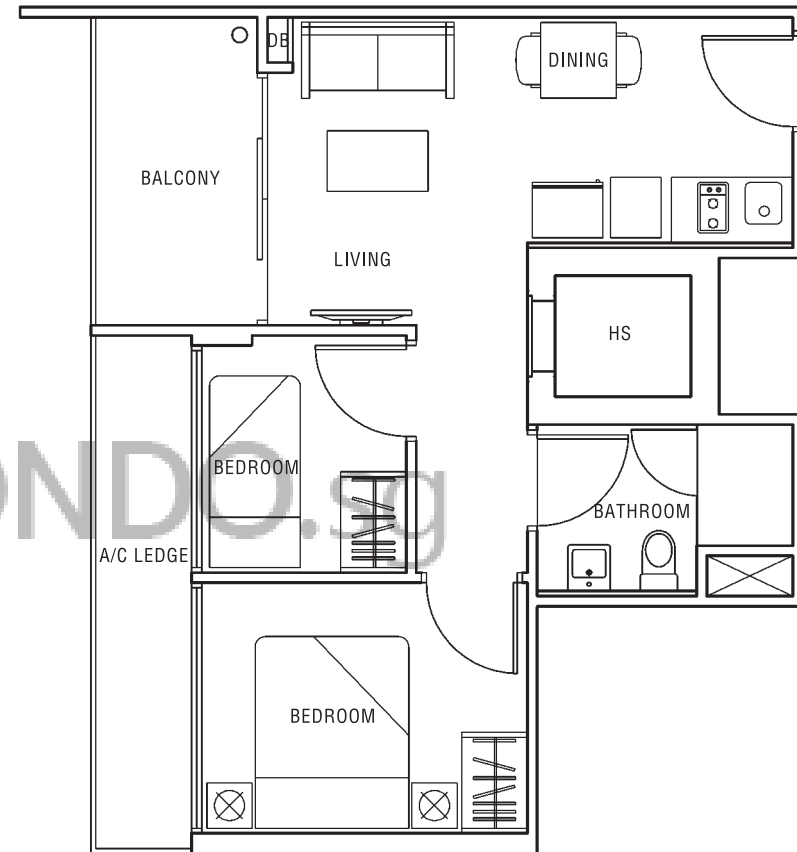


TYPE B4 (2-BEDROOM)

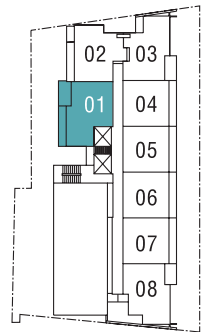
#02-01 to #07-01

Area 50 sq m / 538 sq ft

(Inclusive of Balcony & A/C Ledge)



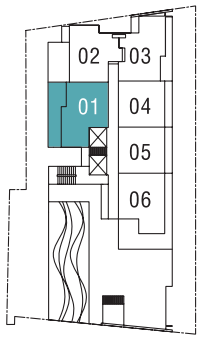
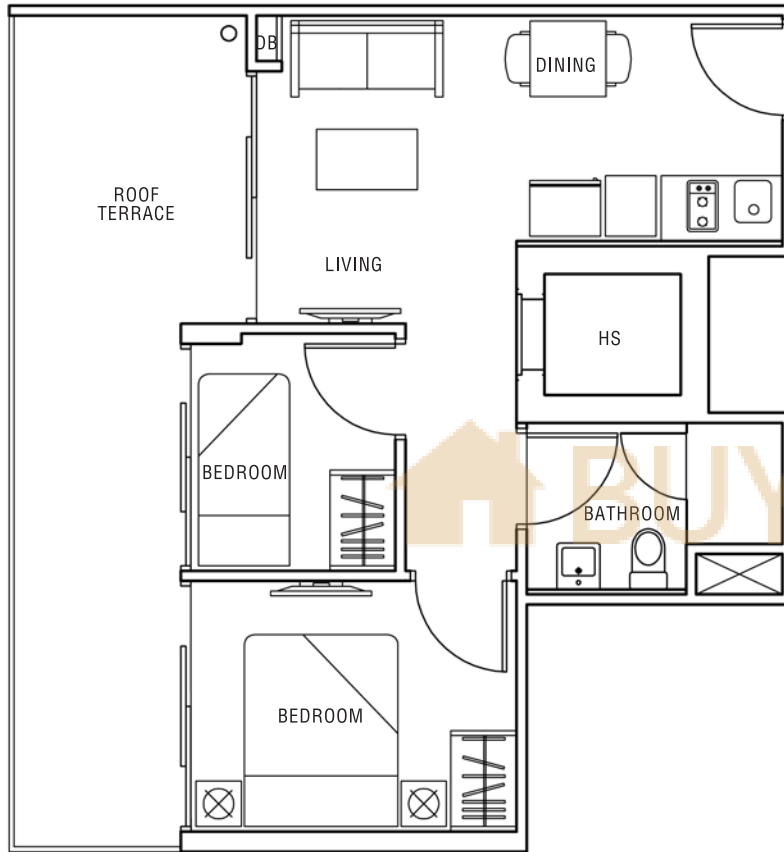
All plans are subjected to amendments as approved by the relevant authorities. Floor areas are approximate measurements and subject to final survey.



TYPE B4-R (2-BEDROOM)

#08-01

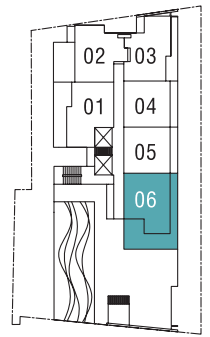
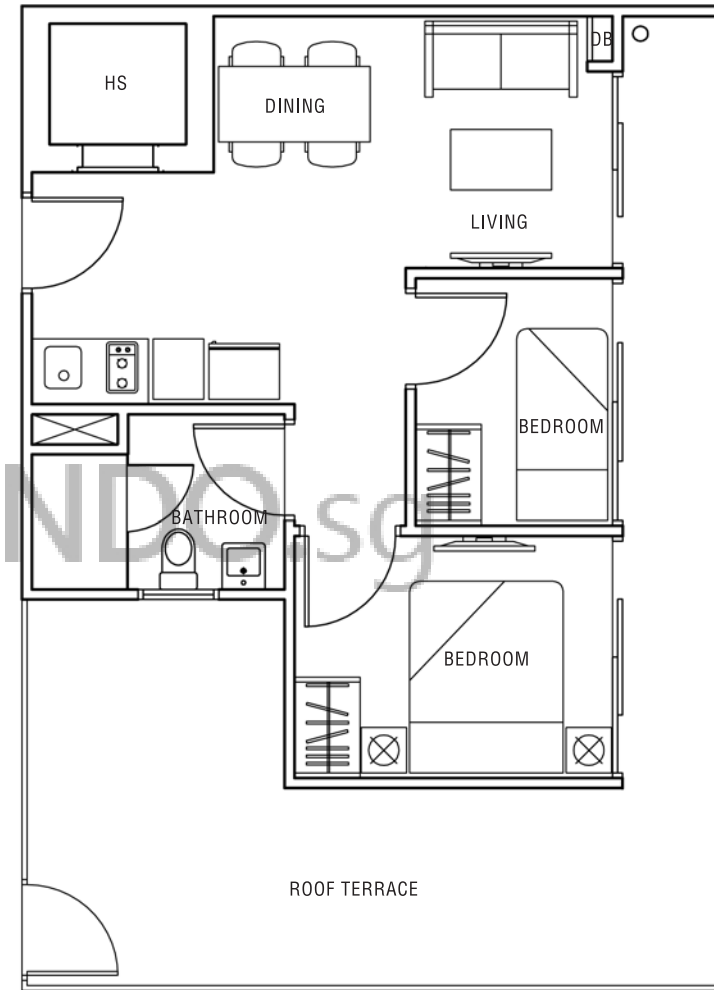
Area 56 sq m / 603 sq ft
(Inclusive of Roof Terrace)



TYPE B5-R (2-BEDROOM)

#08-06

Area 66 sq m / 710 sq ft
(Inclusive of Roof Terrace)



All plans are subjected to amendments as approved by the relevant authorities. Floor areas are approximate measurements and subject to final survey.