

TYPE A

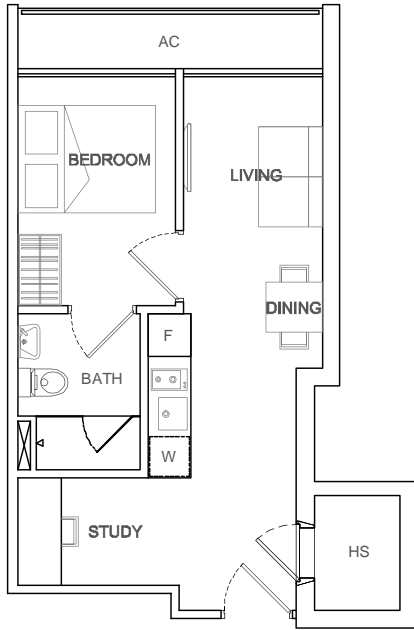
39 sq m

1 bdrm + study

#02-01

#03-01

#04-01

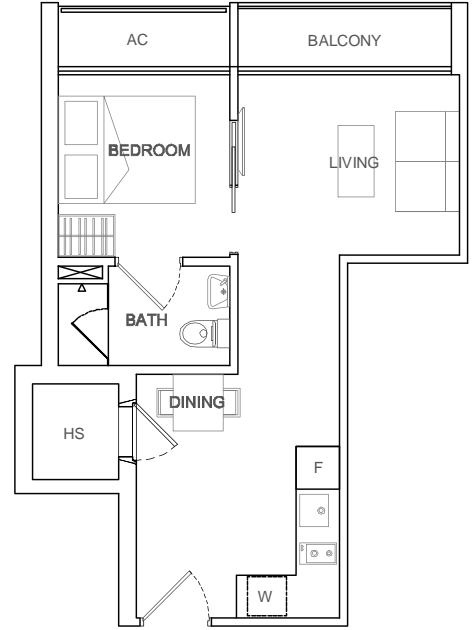


TYPE B

40 sq m

1 bdrm

#02-02

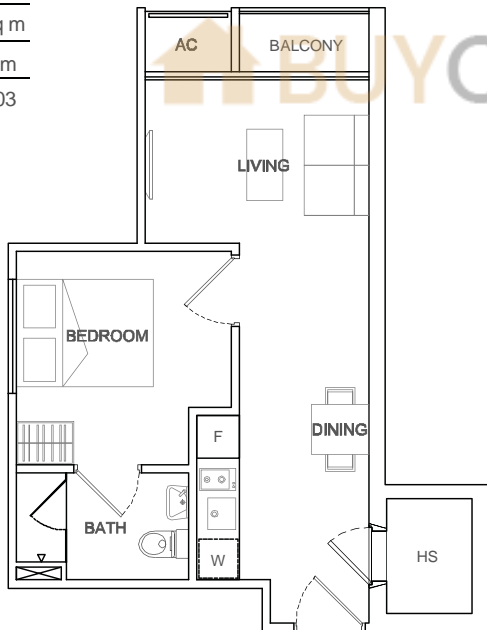


TYPE C

39 sq m

1 bdrm

#02-03



TYPE D

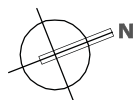
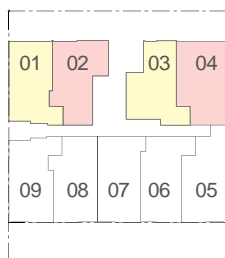
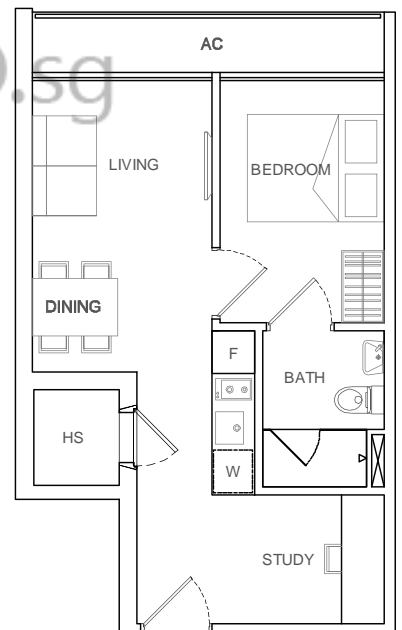
41 sq m

1 bdrm + study

#02-04

#03-04

#04-04



Unit area includes a/c ledge &/or roof terrace &/or void, where applicable
All plans are subject to amendments as approved by the relevant authorities

TYPE E

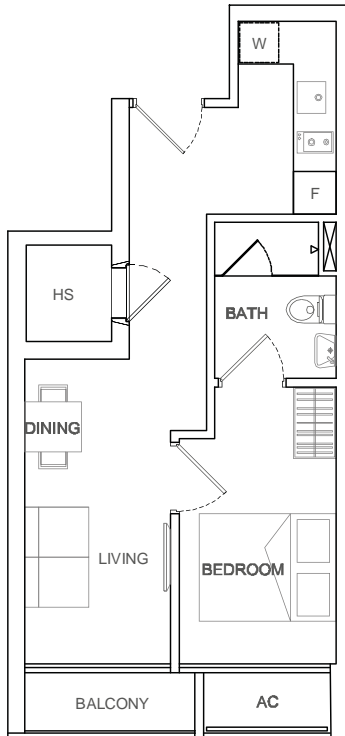
39 sq m

1 bdrm

#02-05

#03-05

#04-05



TYPE F

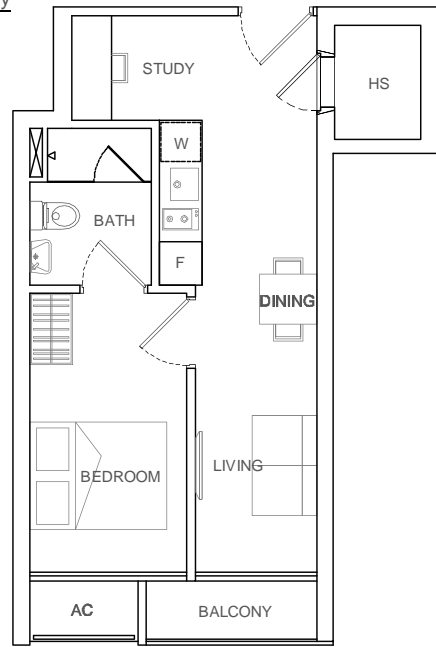
39 sq m

1 bdrm + study

#02-06

#03-06

#04-06



TYPE G

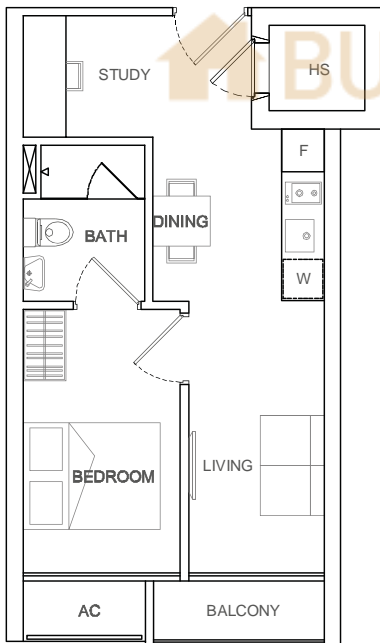
40 sq m

1 bdrm + study

#02-07

#03-07

#04-07



TYPE H

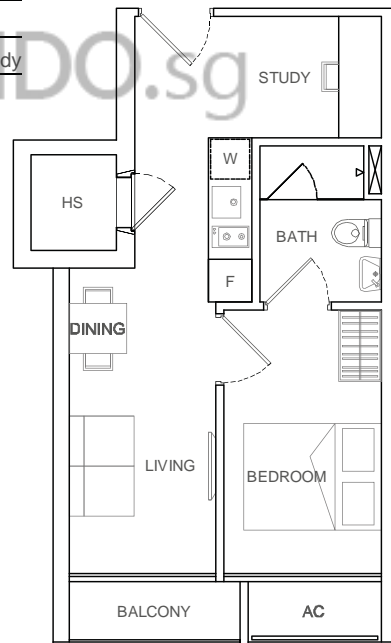
40 sq m

1 bdrm + study

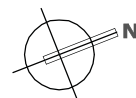
#02-08

#03-08

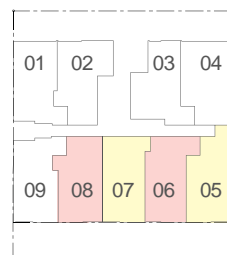
#04-08



BUYCONDO.sg



Unit area includes a/c ledge &/or roof terrace &/or void, where applicable
All plans are subject to amendments as approved by the relevant authorities



TYPE J

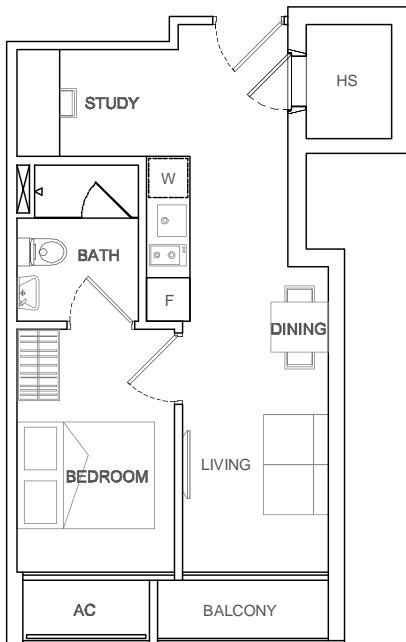
40 sq m

1 bdrm + study

#02-09

#03-09

#04-09



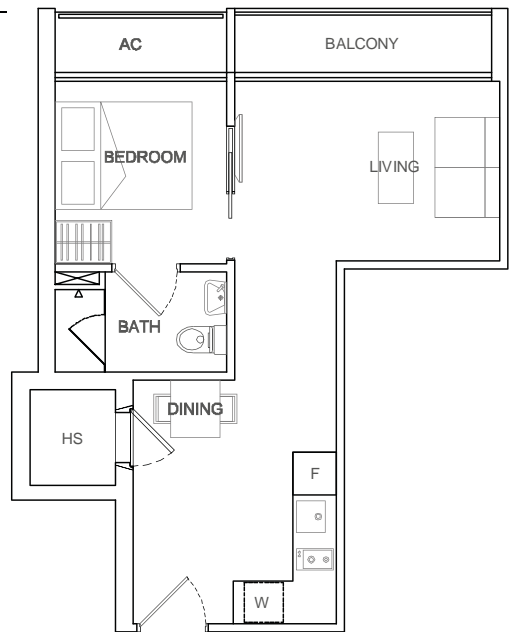
TYPE K

42 sq m

1 bdrm

#03-02

#04-02



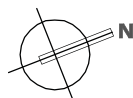
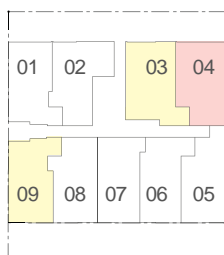
TYPE L

45 sq m

1 bdrm + study

#03-03

#04-03



Unit area includes a/c ledge &/or roof terrace &/or void, where applicable
All plans are subject to amendments as approved by the relevant authorities

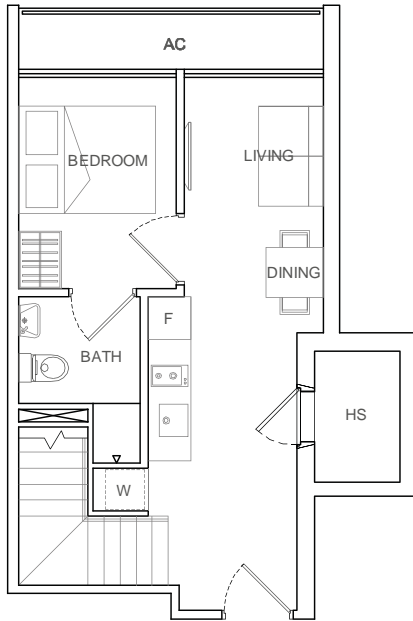
Penthouse

TYPE PH A

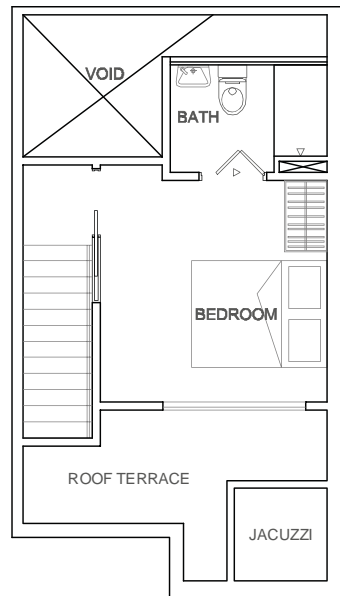
73 sq m

2 bdrm

#05-01



Lower Level



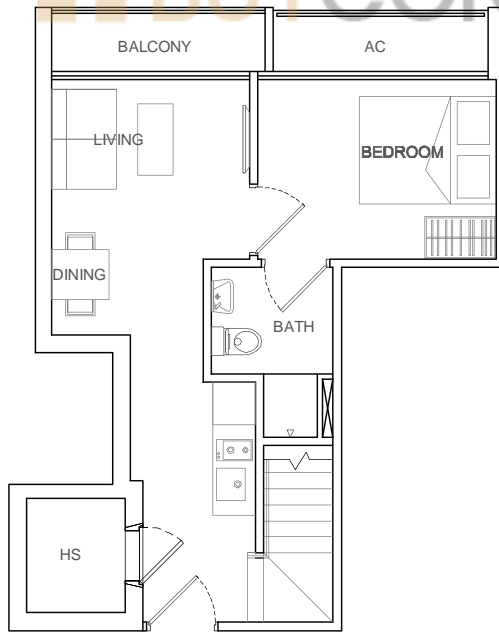
Upper Level

TYPE PH B

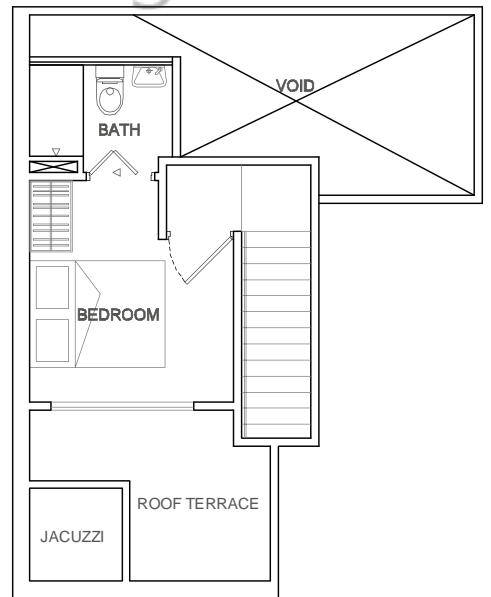
80 sq m

2 bdrm

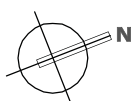
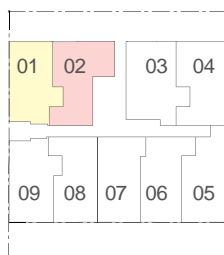
#05-02



Lower Level



Upper Level



Unit area includes a/c ledge &/or roof terrace &/or void, where applicable
All plans are subject to amendments as approved by the relevant authorities

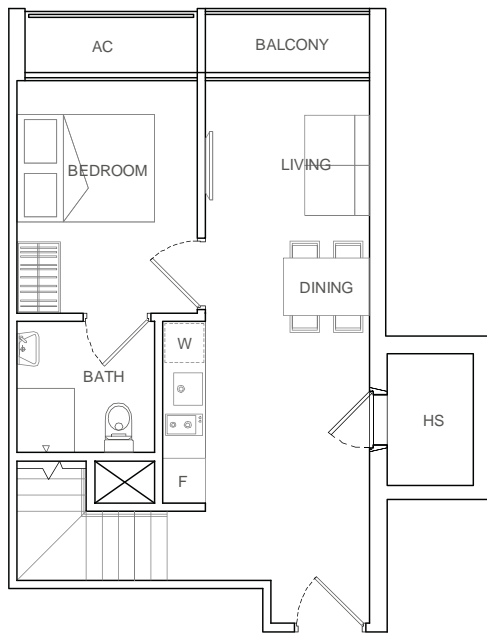
Penthouse

TYPE PH C

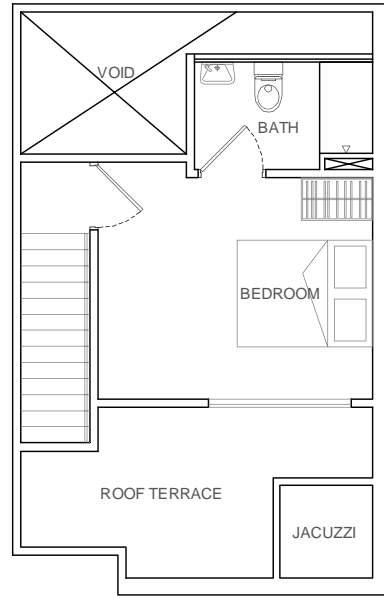
85 sq m

2 bdrm

#05-03



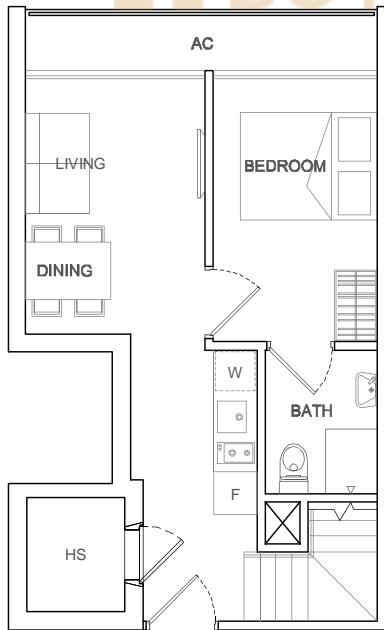
Lower Level



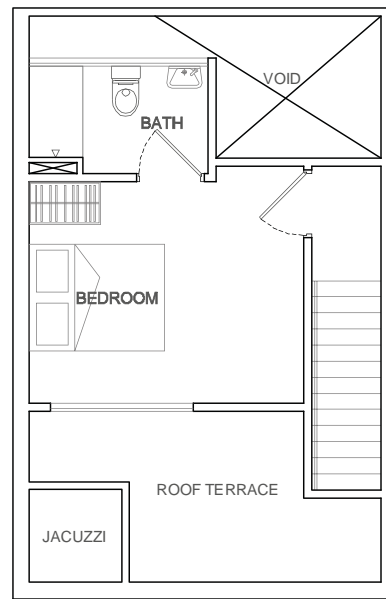
Upper Level



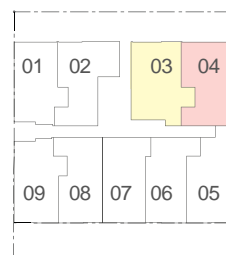
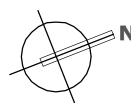
#05-04



Lower Level



Upper Level



Unit area includes a/c ledge &/or roof terrace &/or void, where applicable
All plans are subject to amendments as approved by the relevant authorities

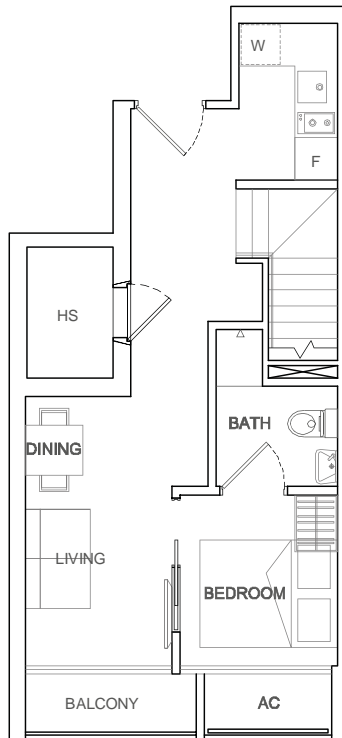
Penthouse

TYPE PH E

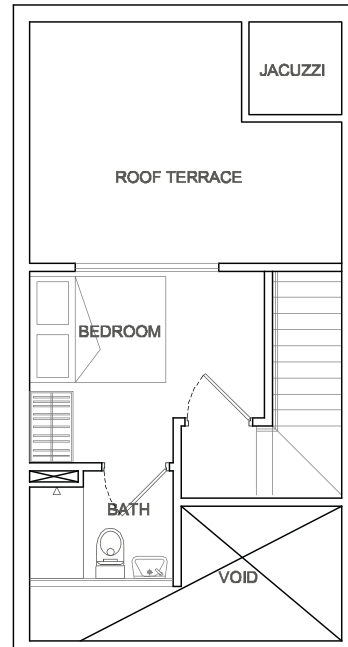
79 sq m

2 bdrm

#05-05



Lower Level



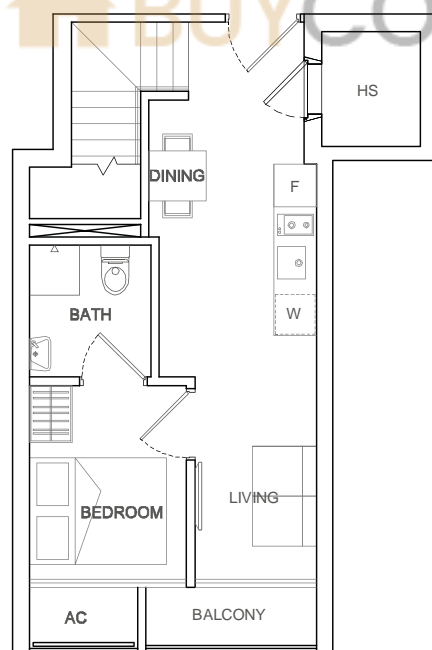
Upper Level

TYPE PH F

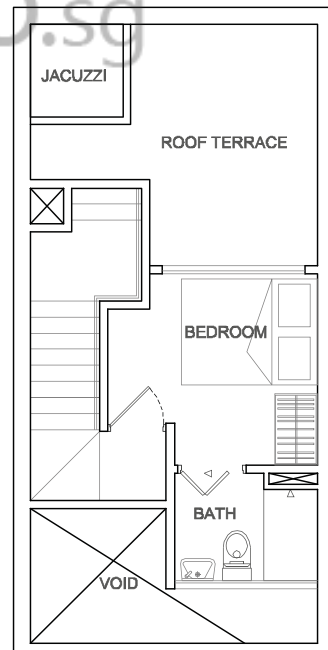
76 sq m

2 bdrm

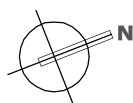
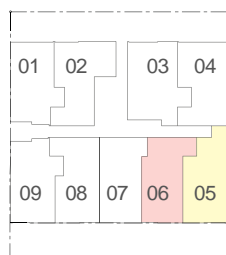
#05-06



Lower Level



Upper Level



Unit area includes a/c ledge &/or roof terrace &/or void, where applicable
All plans are subject to amendments as approved by the relevant authorities

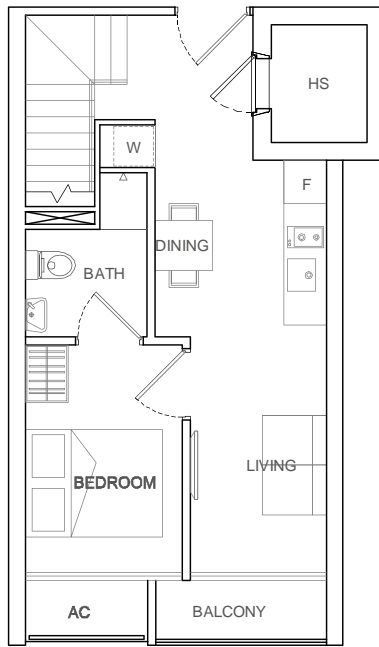
Penthouse

TYPE PH G

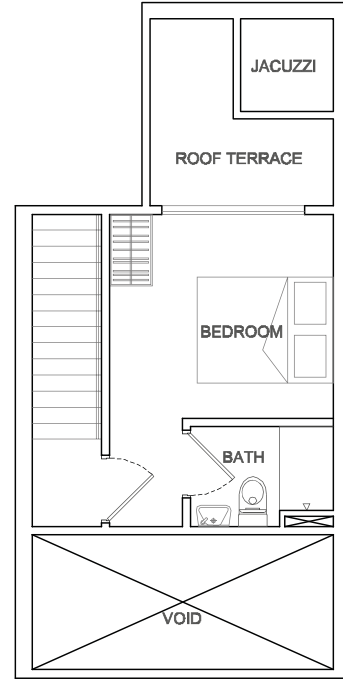
76 sq m

2 bdrm

#05-07



Lower Level



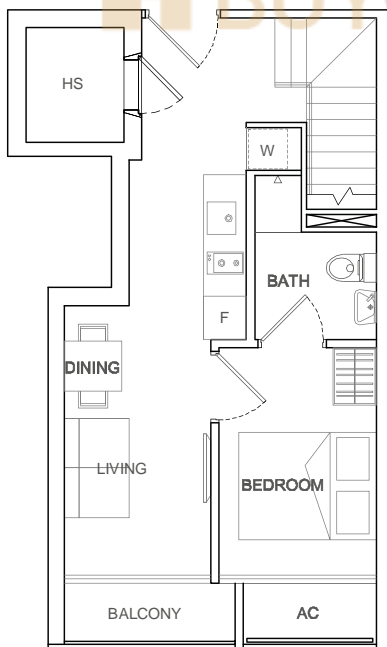
Upper Level

TYPE PH H

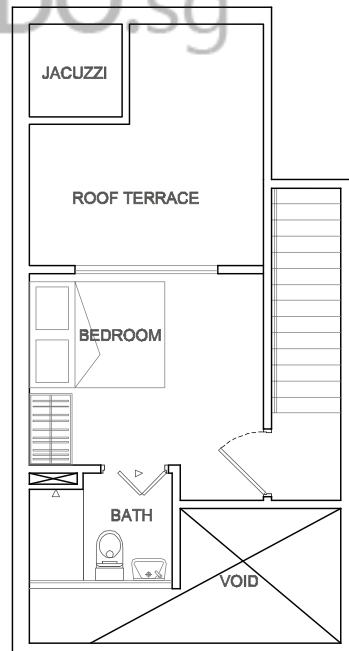
78 sq m

2 bdrm

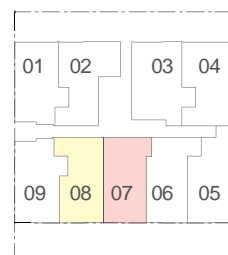
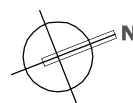
#05-08



Lower Level



Upper Level



Unit area includes a/c ledge &/or roof terrace &/or void, where applicable
All plans are subject to amendments as approved by the relevant authorities

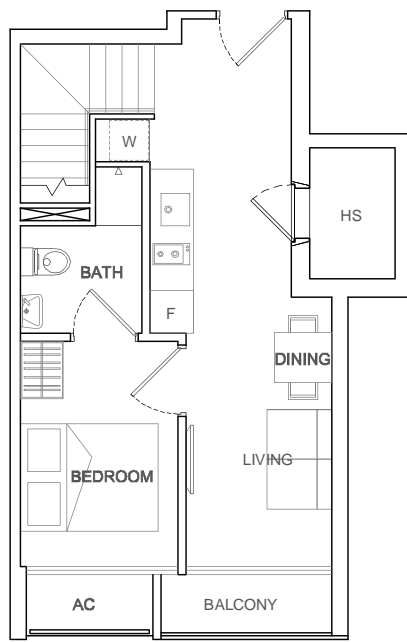
Penthouse

TYPE **PH J**

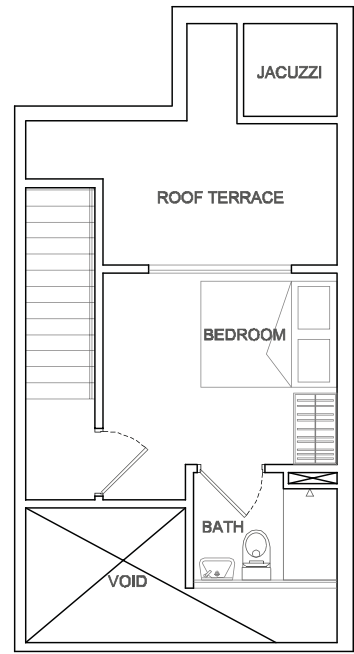
77 sq m

2 bdrm

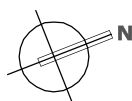
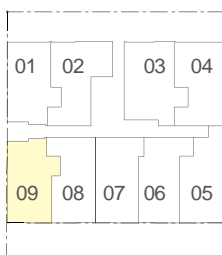
#05-09



Lower Level



Upper Level



Unit area includes a/c ledge &/or roof terrace &/or void, where applicable
All plans are subject to amendments as approved by the relevant authorities