

BUYCONDO

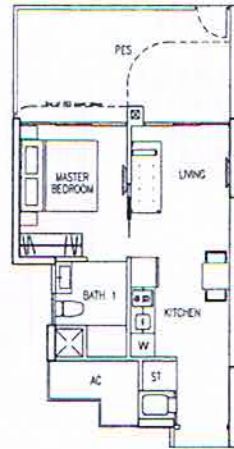
Type: A1

42 sq m / 452 sq ft
#03-18 to #17-18
#02-19 to #16-19



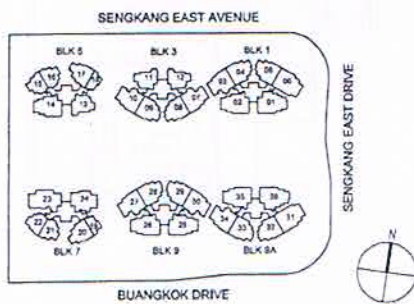
Type: A1ap

53 sq m / 570 sq ft
#01-19



Type: A1bp

53 sq m / 570 sq ft
#02-18



Area includes AC ledge, balcony, PES, open terrace and void (where applicable). Orientations and facings will differ depending on the unit you are purchasing. Please refer to the key plan. All plans are not to scale and are subject to changes as may be approved by the relevant authorities. All floor areas are estimates and are subject to final survey.



Type: B1

70 sq m / 753 sq ft
#03-15 to #17-15
#03-16 to #17-16
#02-21 to #16-21
#02-22 to #16-22



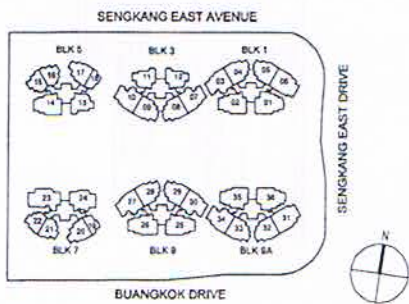
Type: B1ap

80 sq m / 861 sq ft
#01-21
#01-22



Type: B1bp

80 sq m / 861 sq ft
#02-15
#02-16

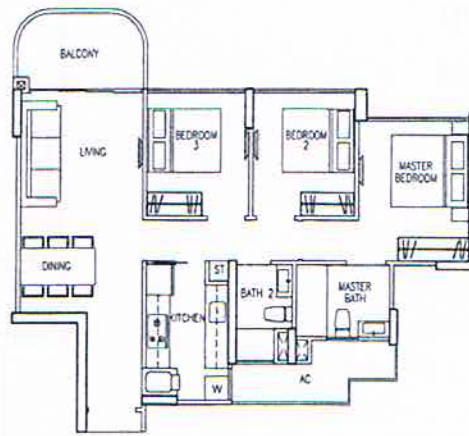


Area includes A/C ledge, balcony, PES, open terrace and void (where applicable). Orientations and facings will differ depending on the unit you are purchasing. Please refer to the key plan. All plans are not to scale and are subject to changes as may be approved by the relevant authorities. All floor areas are estimates and are subject to final survey.



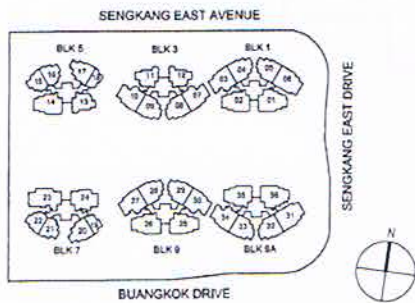
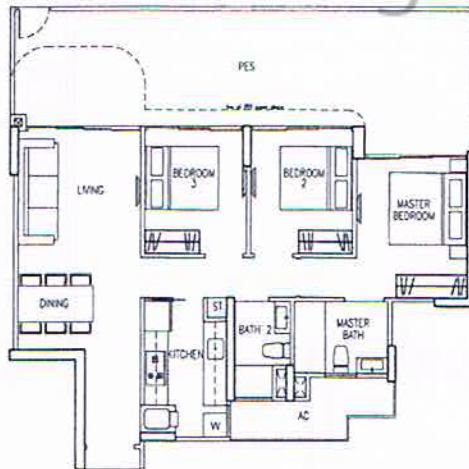
Type: Ci

84 sq m / 904 sq ft
#03-11 to #17-11
#03-12 to #17-12
#02-13 to #16-13



Type: Ciap

114 sq m / 1,227 sq ft
#01-13



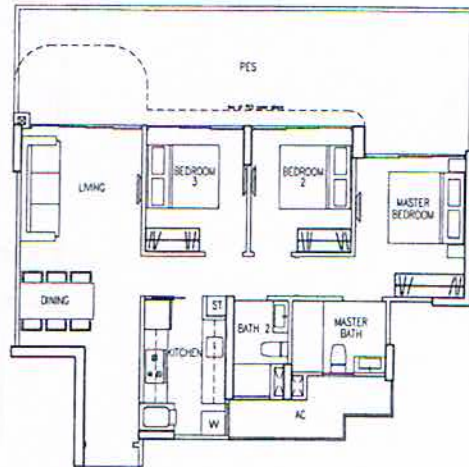
Area includes A/C ledge, balcony, PES, open terrace and void (wham applicable). Orientations and facings will differ depending on the unit you are purchasing. Please refer to the key plan. All plans are not to scale and are subject to changes as may be approved by the relevant authorities. All floor areas are estimates and are subject to final survey.

Type: C1bp

114 sq m / 1,227 sq ft

#02-11

#02-12

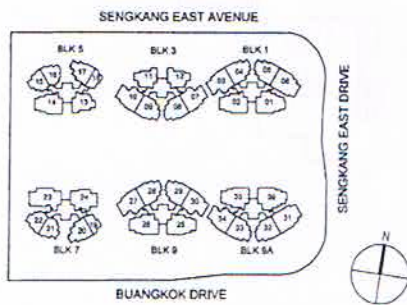
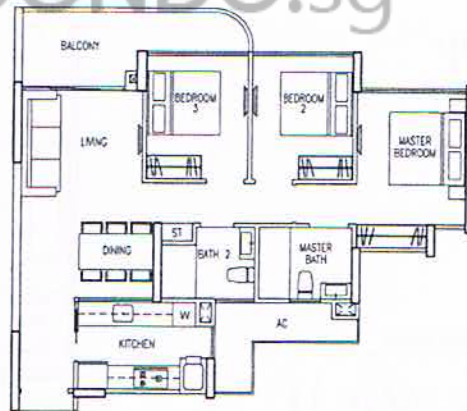


Type: C2

88 sq m / 947 sq ft

#03-17 to #17-17

#02-20 to #16-20



Area includes A/C ledge, balcony, PES, open terrace and void (where applicable). Orientations and facings will differ depending on the unit you are purchasing. Please refer to the key plan. All plans are not to scale and are subject to changes as may be approved by the relevant authorities. All floor areas are estimates and are subject to final survey.

Type: C2ap

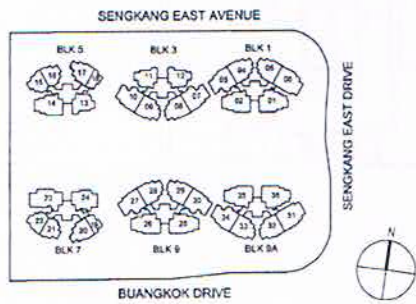
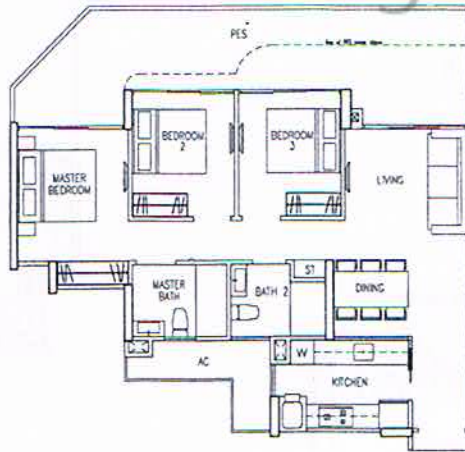
106 sq m / 1,141 sq ft
#01-20





Type: C2bp

106 sq m / 1,141 sq ft
#02-17

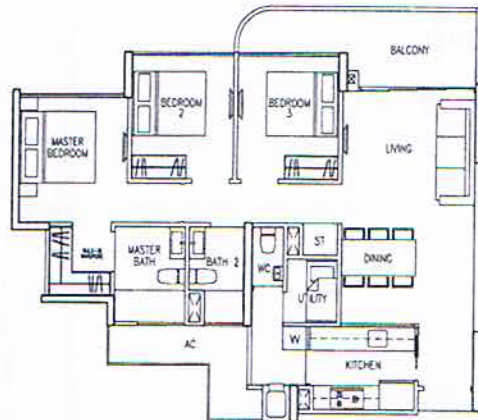


Area includes A/C ledge, balcony, PES, open terrace and void (where applicable). Orientations and facings will differ depending on the unit you are purchasing. Please refer to the key plan. All plans are not to scale and are subject to changes as may be approved by the relevant authorities. All floor areas are estimates and are subject to final survey.

Type: C3

99 sq m / 1,066 sq ft

#02-04 to #16-04
 #02-05 to #12-05, #15-05, #16-05
 #02-08 to #16-08
 #02-09 to #16-09
 #02-28 to #16-28
 #02-29 to #16-29
 #02-32 to #12-32, #15-32, #16-32
 #02-33 to #16-33

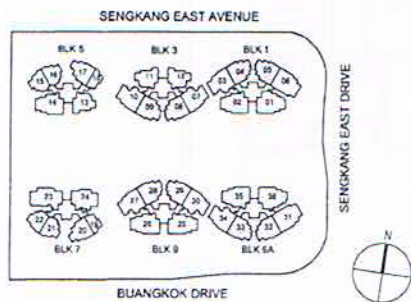
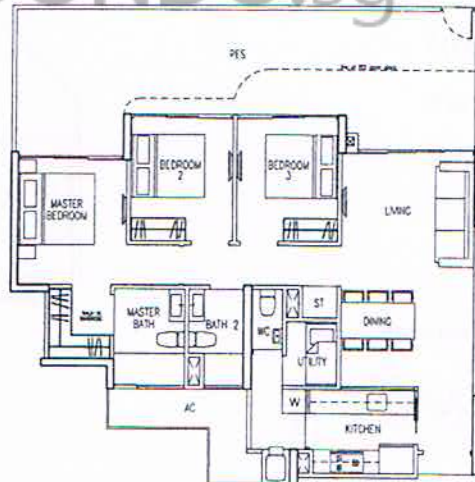


 BUYCONDO.sg

Type: C3p

128 sq m / 1,378 sq ft

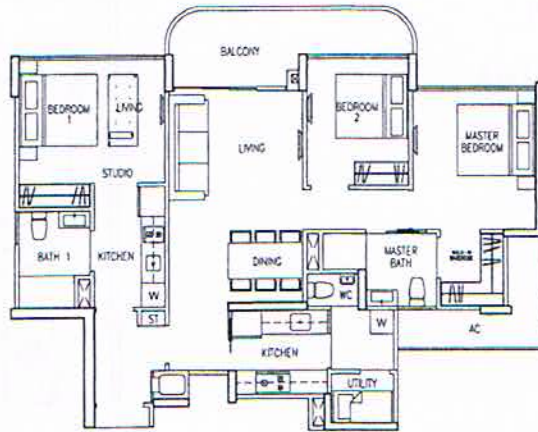
#01-08
 #01-09
 #01-28
 #01-29
 #01-32
 #01-33



Area includes A/C ledge, balcony, PES, open terrace and void (where applicable). Orientations and facings will differ depending on the unit you are purchasing.
 Please refer to the key plan. All plans are not to scale and are subject to changes as may be approved by the relevant authorities. All floor areas are estimates and are subject to final survey.

Type: C4(DK)

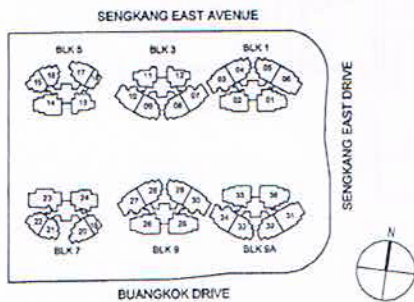
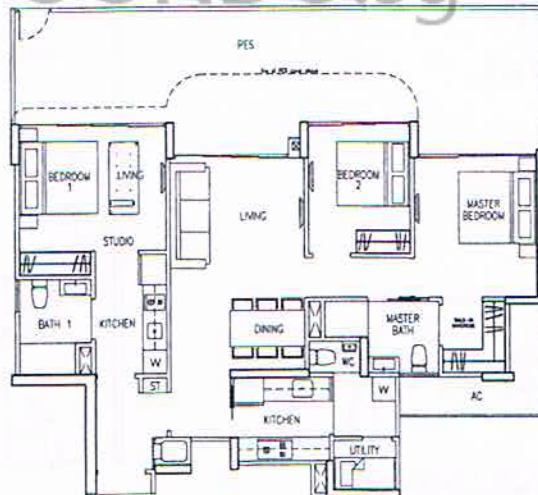
110 sq m / 1,184 sq ft
#02-24 to #16-24



 BUYCONDO.sg

Type: C4(DK)p

144 sq m / 1,550 sq ft
#01-24



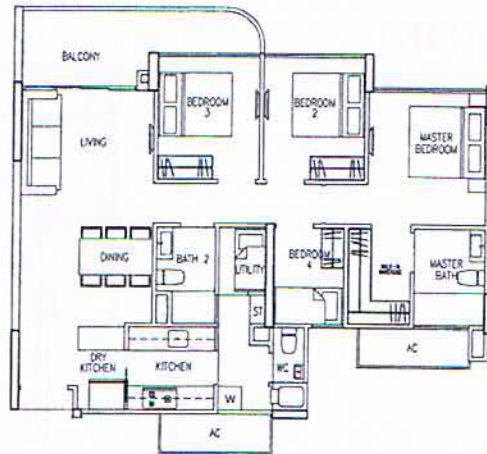
Area includes A/C ledge, balcony, PES, open terrace and void (where applicable). Orientations and facings will differ depending on the unit you are purchasing. Please refer to the key plan. All plans are not to scale and are subject to changes as may be approved by the relevant authorities. All floor areas are estimates and are subject to final survey.

4 Bedroom

Type: D1

108 sq m / 1,163 sq ft

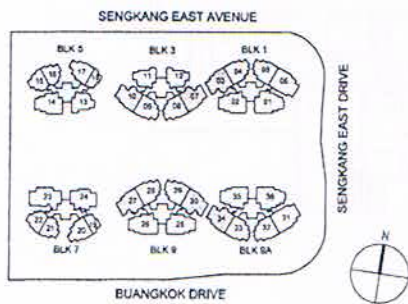
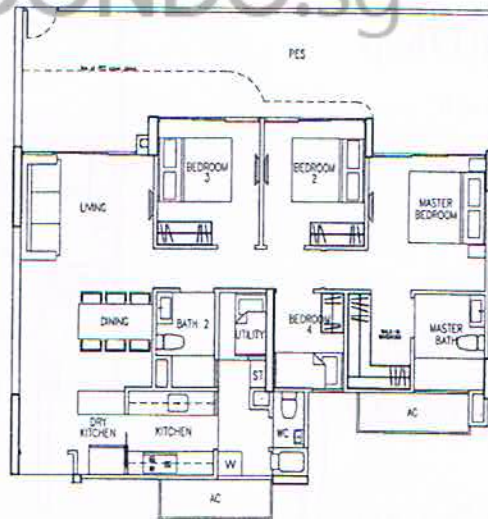
- #02-03 to #16-03
- #02-07 to #16-07
- #02-10 to #16-10
- #02-27 to #16-27
- #02-30 to #16-30
- #02-34 to #16-34



Type: D1p

137 sq m / 1,475 sq ft

- #01-03
- #01-07
- #01-10
- #01-27
- #01-30
- #01-34



 BUYCONDO.sg

Area includes A/C ledge, balcony, PES, open terrace and void (where applicable). Orientations and facings will differ depending on the unit you are purchasing. Please refer to the key plan. All plans are not to scale and are subject to changes as may be approved by the relevant authorities. All floor areas are estimates and are subject to final survey.



Type: D2

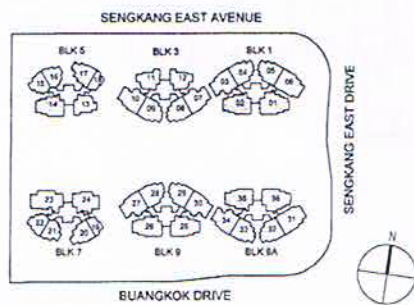
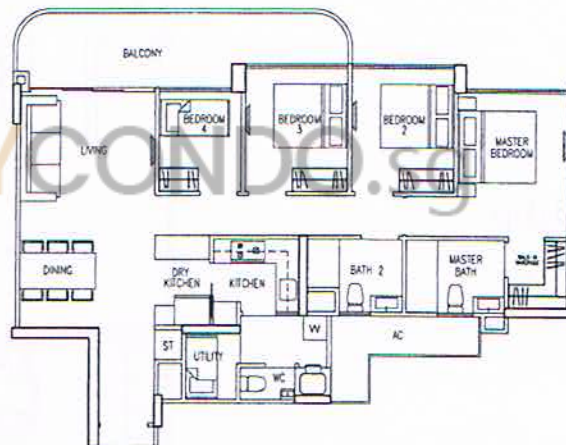
117 sq m / 1,259 sq ft

#02-02 to #16-02

#04-14 to #16-14

#02-35 to #16-35

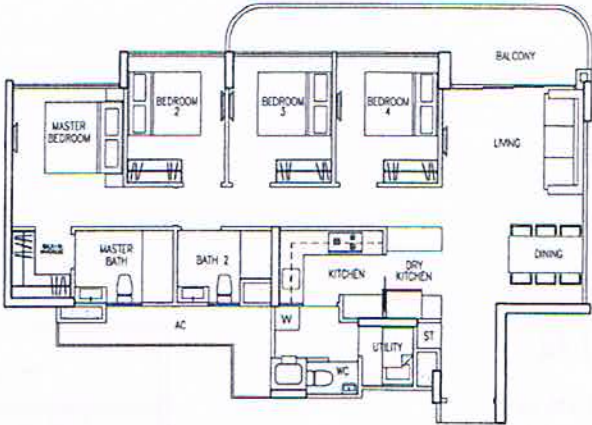
BUY CONDO.SG



Area includes A/C ledge, balcony, PES, open terrace and void (where applicable). Orientations and facings will differ depending on the unit you are purchasing. Please refer to the key plan. All plans are not to scale and are subject to changes as may be approved by the relevant authorities. All floor areas are estimates and are subject to final survey.

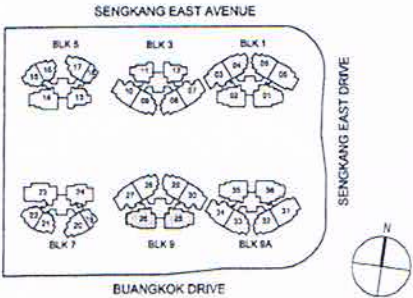
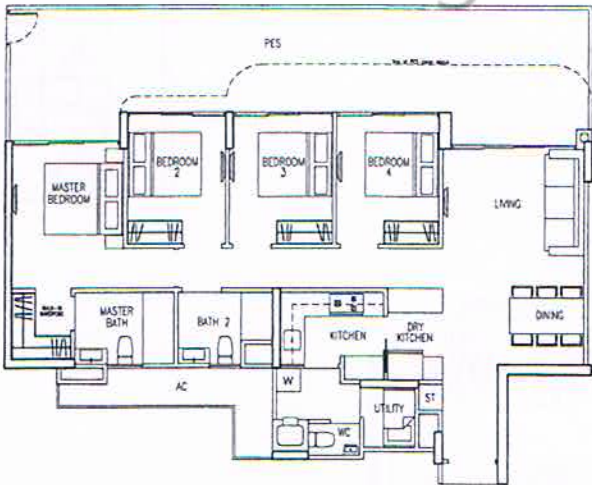
Type: D3

120 sq m / 1,292 sq ft
 #02-25 to #16-25
 #02-26 to #16-26



Type: D3p

151 sq m / 1,625 sq ft
 #01-25
 #01-26



Area includes A/C ledge, balcony, PES, open terrace and void (where applicable). Orientations and facings will differ depending on the unit you are purchasing. Please refer to the key plan. All plans are not to scale and are subject to changes as may be approved by the relevant authorities. All floor areas are estimates and are subject to final survey.

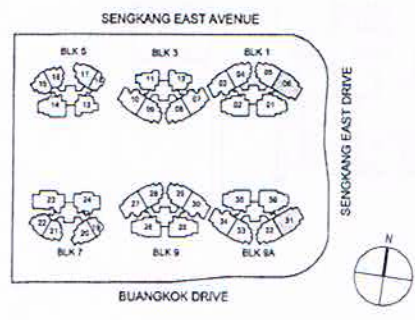
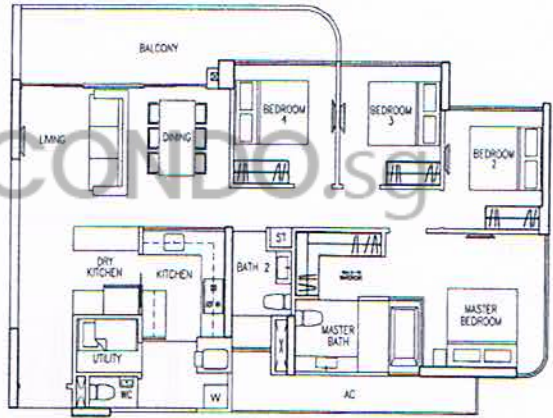
4 Bedroom

Type: D4

125 sq m / 1,345 sq ft

#02-06 to #12-06, #15-06, #16-06
 #02-31 to #12-31, #15-31, #16-31

BUYCONDO.SG

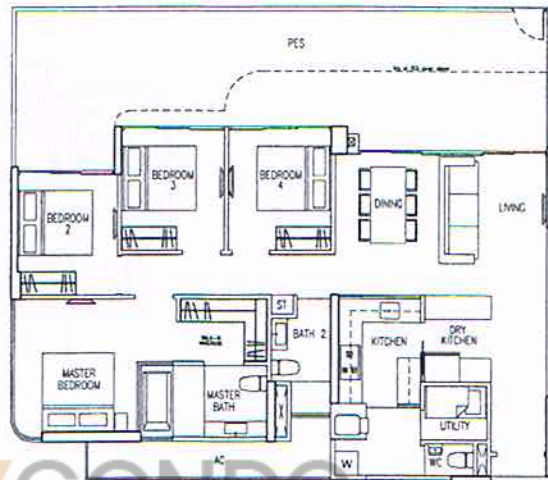


Area includes A/C ledge, balcony, PES, open terrace and void (where applicable). Orientations and facings will differ depending on the unit you are purchasing. Please refer to the key plan. All plans are not to scale and are subject to changes as may be approved by the relevant authorities. All floor areas are estimates and are subject to final survey.

4 Bedroom

Type: D4ap

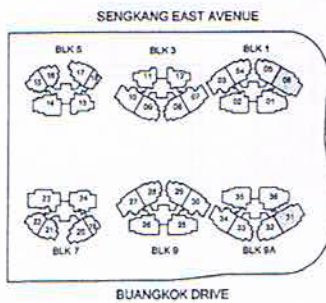
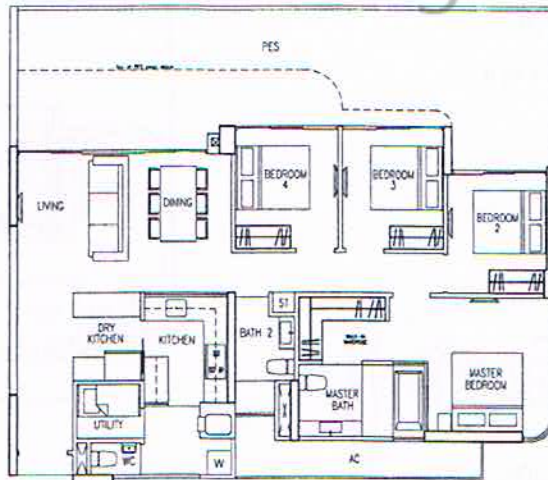
157 sq m / 1,690 sq ft
#01-31



 BUYCONDO.sg

Type: D4bp

157 sq m / 1,690 sq ft
#01-06

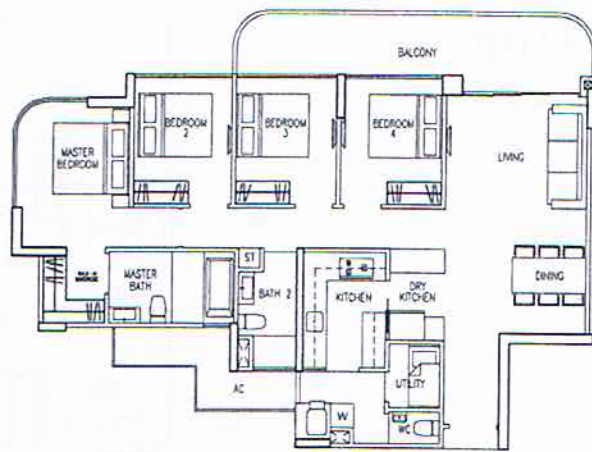


Area includes A/C ledge, balcony, PES, open terrace and void (where applicable). Orientations and facings will differ depending on the unit you are purchasing. Please refer to the key plan. All plans are not to scale and are subject to changes as may be approved by the relevant authorities. All floor areas are estimates and are subject to final survey.

4 Bedroom

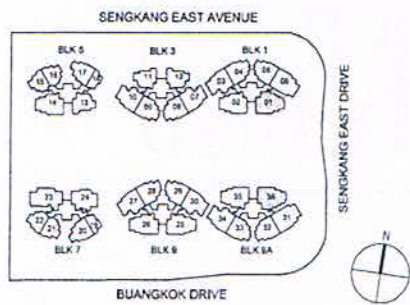
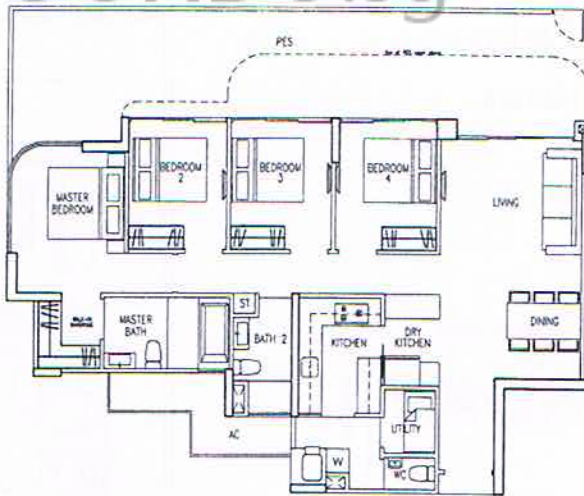
Type: D5

127 sq m / 1,367 sq ft
 #02-01 to #16-01
 #02-36 to #16-36



Type: D5p

156 sq m / 1,679 sq ft
 #01-01
 #01-36

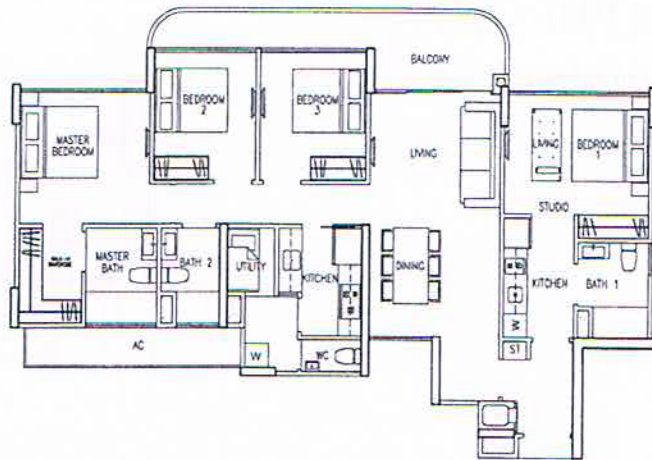


Area includes A/C ledge, balcony, PES, open terrace and void (where applicable). Orientations and facings will differ depending on the unit you are purchasing.
 Please refer to the key plan. All plans are not to scale and are subject to changes as may be approved by the relevant authorities. All floor areas are estimates and are subject to final survey.

4-Bedroom Dual Key

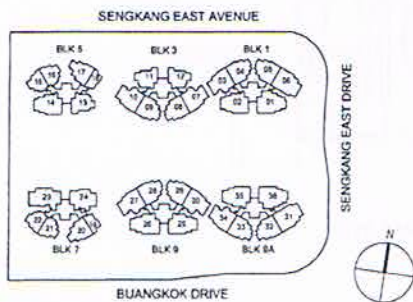
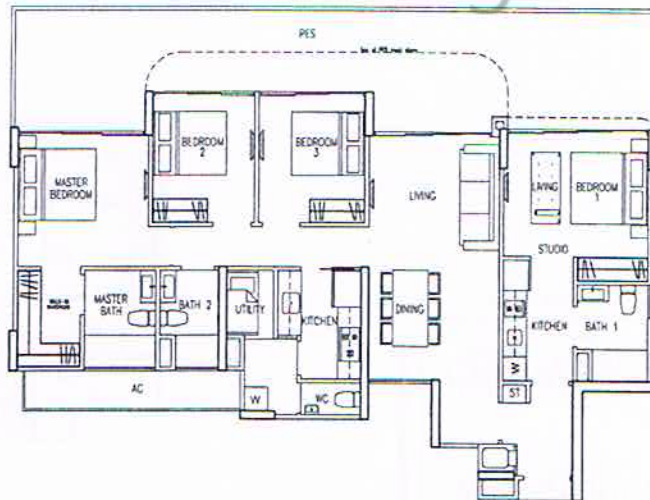
Type: D6(DK)

132 sq m / 1,421 sq ft
#04-23 to #16-23



Type: D6(DK)p

165 sq m / 1,776 sq ft
#03-23

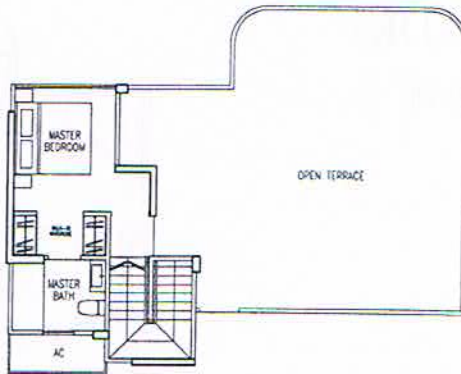


Area includes A/C ledge, balcony, PES, open terrace and void (where applicable). Orientations and facings will differ depending on the unit you are purchasing. Please refer to the key plan. All plans are not to scale and are subject to changes as may be approved by the relevant authorities. All floor areas are estimates and are subject to final survey.

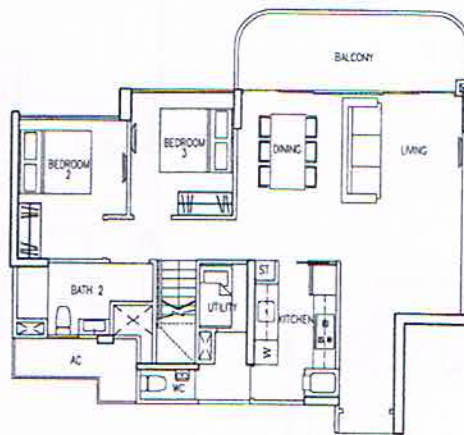
3-Bedroom Penthouse

Type: PH1

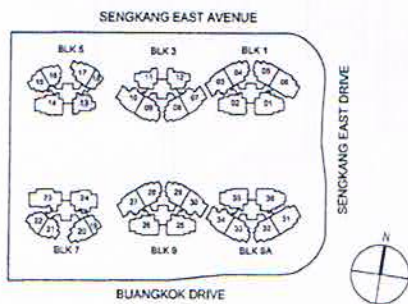
179 sq m / 1,927 sq ft
#17-13



Upper Level



Lower Level



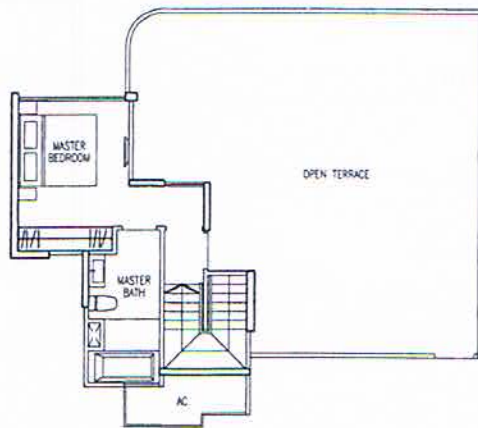
Area includes A/C ledge, balcony, PES, open terrace and void (where applicable). Orientations and facings will differ depending on the unit you are purchasing. Please refer to the key plan. All plans are not to scale and are subject to changes as may be approved by the relevant authorities. All floor areas are estimates and are subject to final survey.

3 Bedroom Penthouse

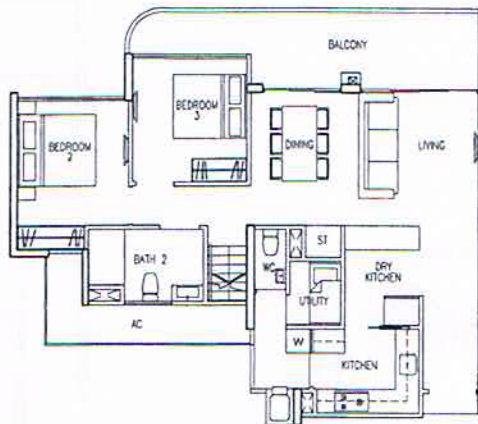
Type: PH2

197 sq m / 2,120 sq ft

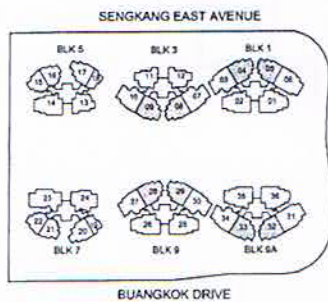
- #17-04
- #17-05
- #17-08
- #17-09
- #17-28
- #17-29
- #17-32
- #17-33



Upper Level



Lower Level



SENGKANG EAST DRIVE



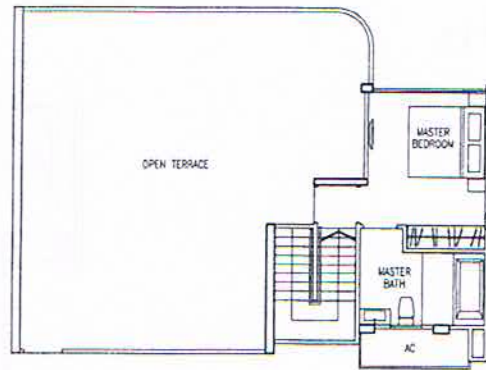
Area includes A/C ledge, balcony, PES, open terrace and void (where applicable). Orientations and facings will differ depending on the unit you are purchasing. Please refer to the key plan. All plans are not to scale and are subject to changes as may be approved by the relevant authorities. All floor areas are estimates and are subject to final survey.

3-Bedroom Penthouse

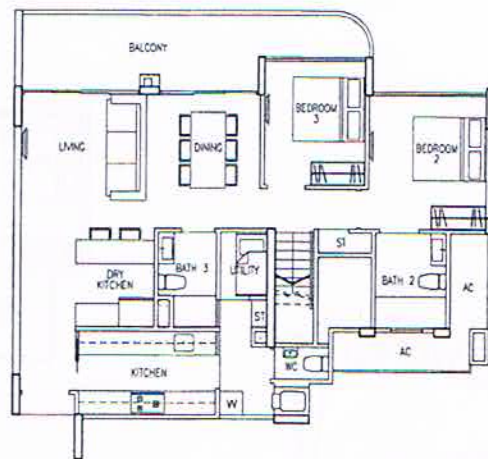
Type: PH₃

204 sq m / 2,196 sq ft

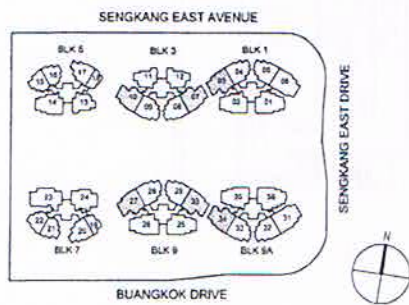
- #17-03
- #17-07
- #17-10
- #17-27
- #17-30
- #17-34



Upper Level



Lower Level

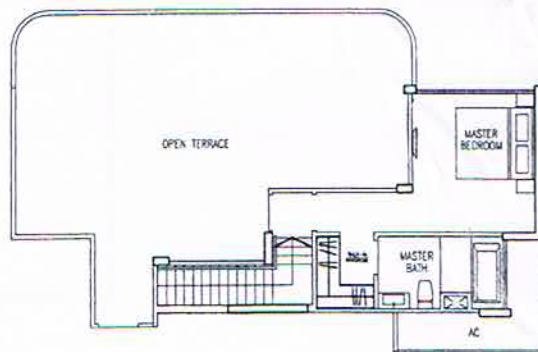


Area includes A/C ledge, balcony, FES, open terrace and void (where applicable). Orientations and facings will differ depending on the unit you are purchasing. Please refer to the key plan. All plans are not to scale and are subject to changes as may be approved by the relevant authorities. All floor areas are estimates and are subject to final survey.

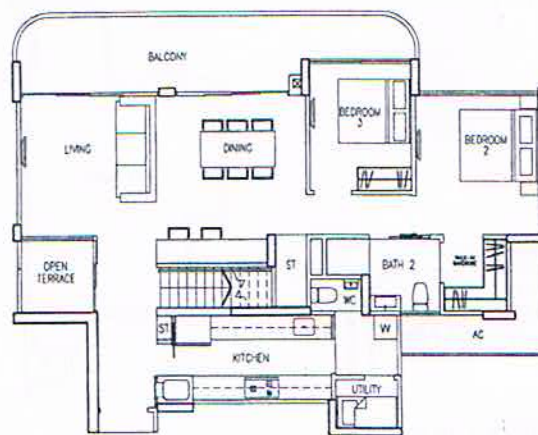
Bedroom Penthouse

Type: PH4

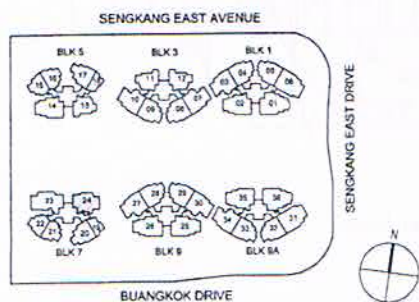
210 sq m / 2,260 sq ft
#17-24



Upper Level



Lower Level



SENGKANG EAST DRIVE

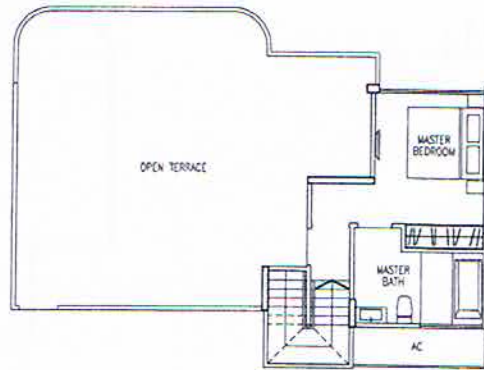
BUANGKOK DRIVE

Area includes A/C ledge, balcony, PES, open terrace and void (where applicable). Orientations and facings will differ depending on the unit you are purchasing. Please refer to the key plan. All plans are not to scale and are subject to changes as may be approved by the relevant authorities. All floor areas are estimates and are subject to final survey.

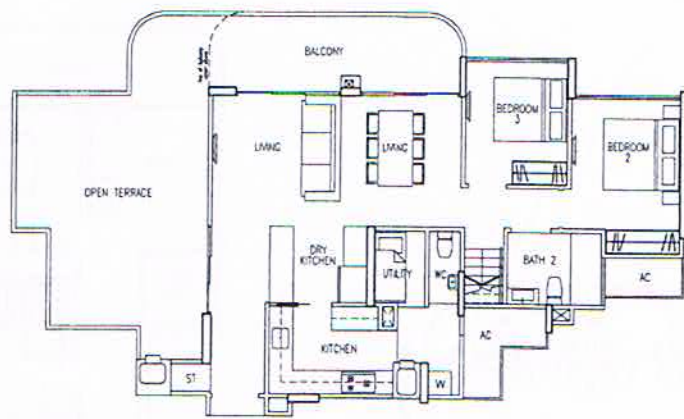
3 Bedroom Penthouse

Type: PH5

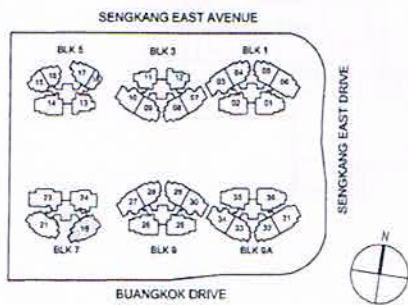
222 sq m / 2,390 sq ft
#17-19



Upper Level



Lower Level

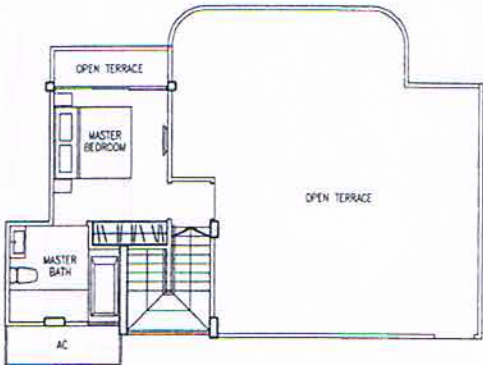


Area includes A/C ledge, balcony, PES, open terrace and void (where applicable). Orientations and facings will differ depending on the unit you are purchasing. Please refer to the key plan. All plans are not to scale and are subject to changes as may be approved by the relevant authorities. All floor areas are estimates and are subject to final survey.

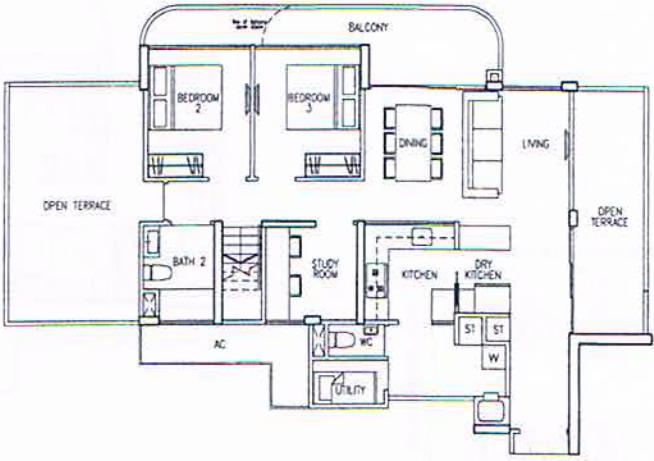
3 Bedroom Penthouse

Type: PH6

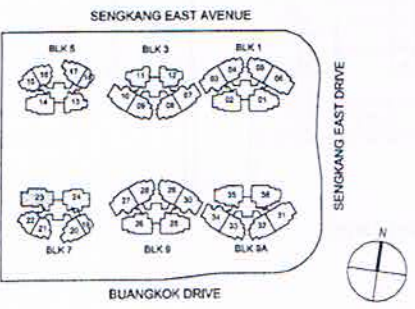
223 sq m / 2,400 sq ft
#17-23



 Upper Level



Lower Level



SENGKANG EAST AVENUE

SENGKANG EAST AVENUE

BUANGKOK DRIVE

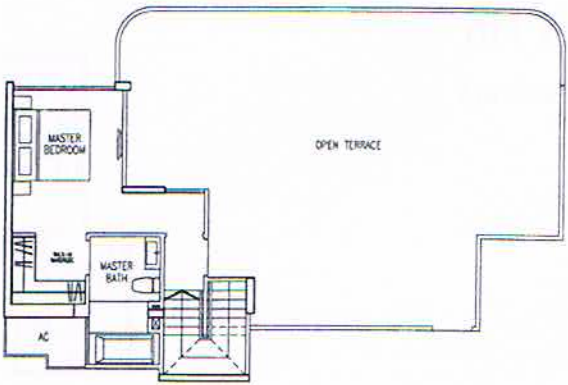


Area includes A/C ledge, balcony, PES, open terrace and void (where applicable). Orientations and facings will differ depending on the unit you are purchasing. Please refer to the key plan. All plans are not to scale and are subject to changes as may be approved by the relevant authorities. All floor areas are estimates and are subject to final survey.

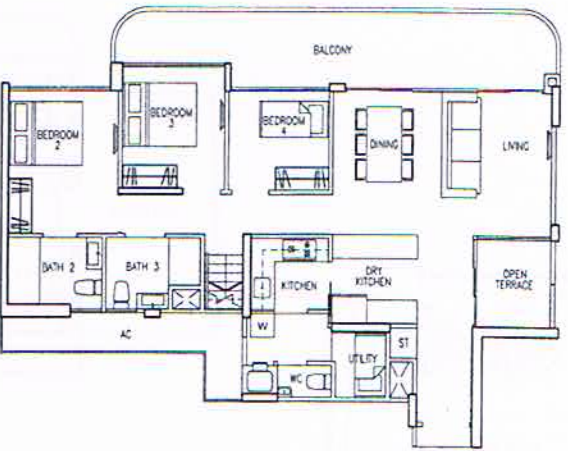
4 Bedroom Penthouse

Type: PH7

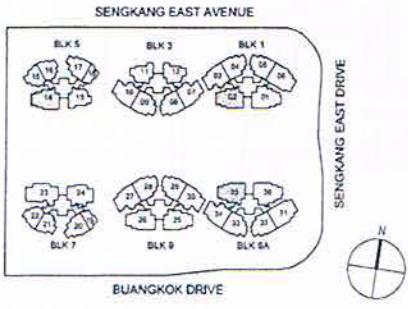
233 sq m / 2,508 sq ft
 #17-02
 #17-14
 #17-35



Upper Level



Lower Level



Area includes A/C ledge, balcony, PES, open terrace and void (where applicable). Orientations and facings will differ depending on the unit you are purchasing. Please refer to the key plan. All plans are not to scale and are subject to changes as may be approved by the relevant authorities. All floor areas are estimates and are subject to final survey.

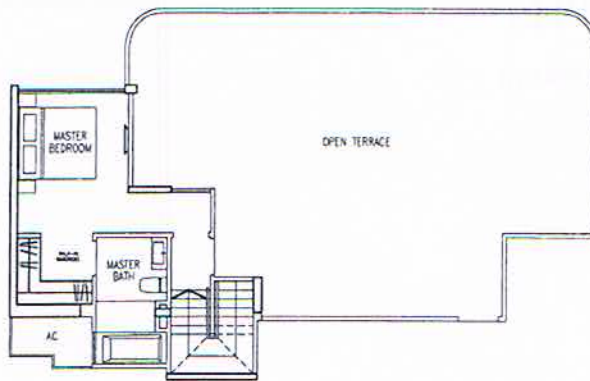
4 Bedroom Penthouse

Type: PH8

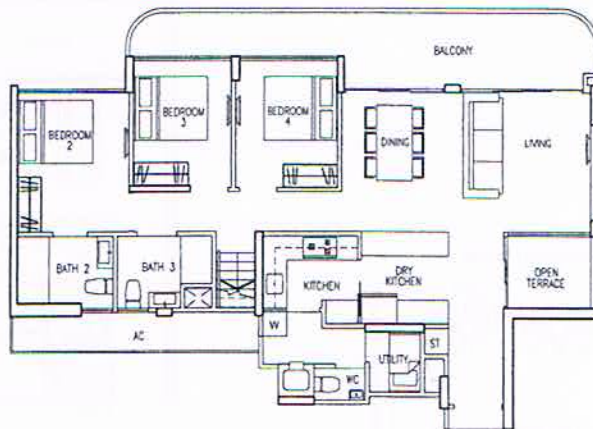
235 sq m / 2,530 sq ft

#17-25

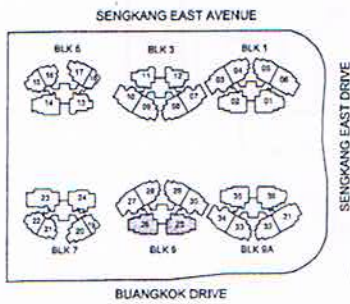
#17-26



Upper Level



Lower Level



SENGKANG EAST AVENUE

BUANGKOK DRIVE

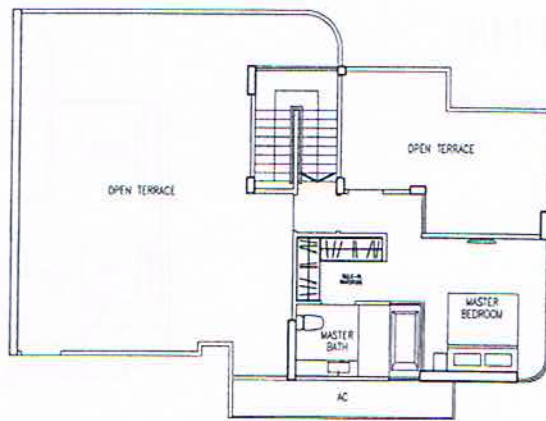


Area includes A/C ledge, balcony, PES, open terrace and void (where applicable). Orientations and facings will differ depending on the unit you are purchasing. Please refer to the key plan. All plans are not to scale and are subject to changes as may be approved by the relevant authorities. All floor areas are estimates and are subject to final survey.

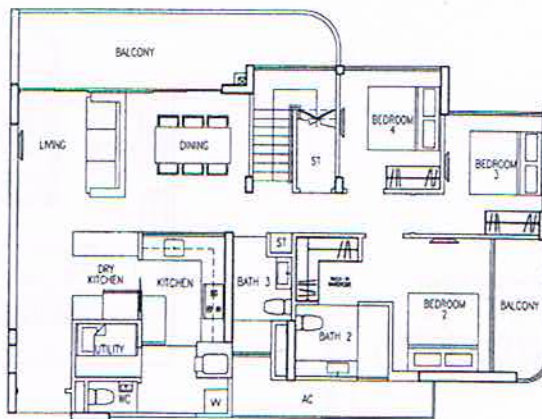
4 Bedroom Penthouse

Type: PH9

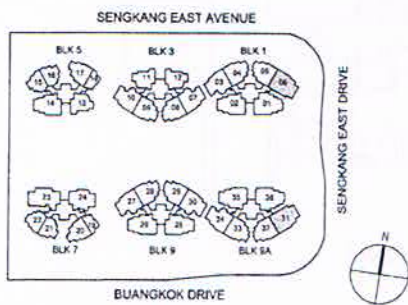
241 sq m / 2,594 sq ft
 #17-06
 #17-31



Upper Level



Lower Level



Area includes A/C ledge, balcony, PES, open terrace and void (where applicable). Orientations and facings will differ depending on the unit you are purchasing. Please refer to the key plan. All plans are not to scale and are subject to changes as may be approved by the relevant authorities. All floor areas are estimates and are subject to final survey.

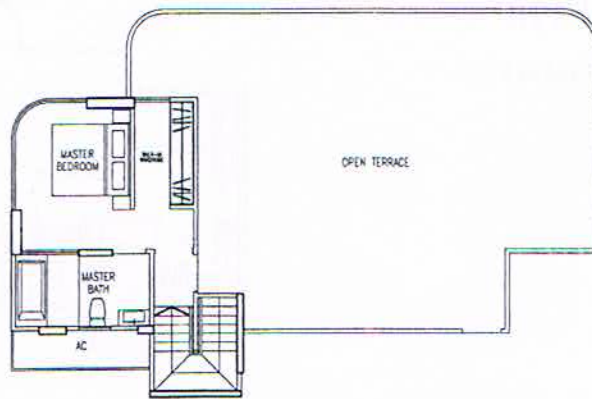
4-Bedroom Penthouse

Type: PH10

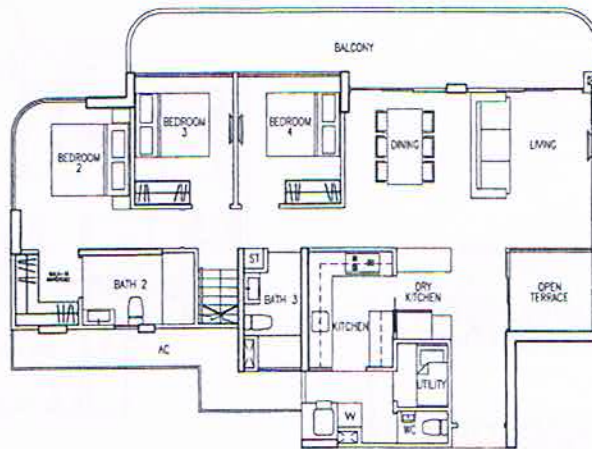
249 sq m / 2,680 sq ft

#17-01

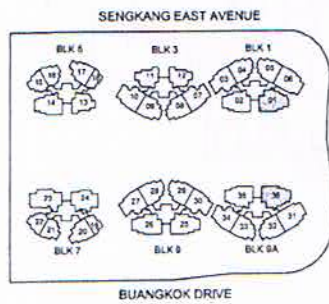
#17-36



Upper Level



Lower Level

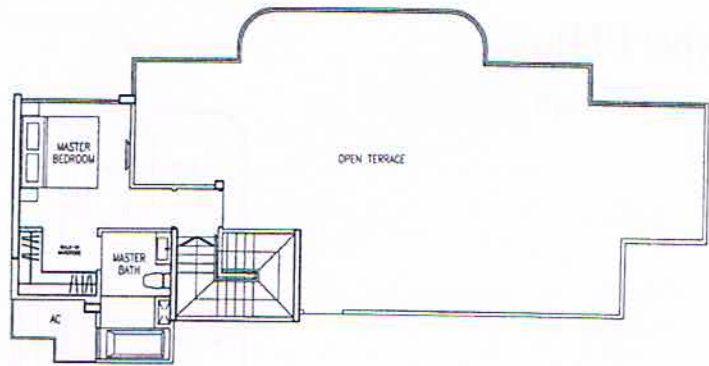


Area includes A/C ledge, balcony, PES, open terrace and void (where applicable). Orientations and facings will differ depending on the unit you are purchasing. Please refer to the key plan. All plans are not to scale and are subject to changes as may be approved by the relevant authorities. All floor areas are estimates and are subject to final survey.

4 Bedroom Penthouse

Type: PHII

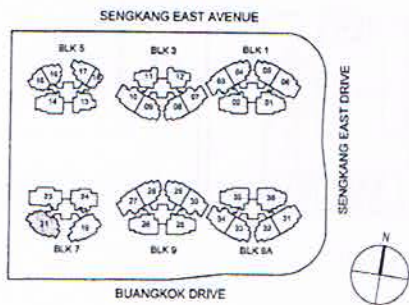
254 sq m / 2,734 sq ft
#17-21



Upper Level



Lower Level



Area includes A/C ledge, balcony, PES, open terrace and void (where applicable). Orientations and facings will differ depending on the unit you are purchasing. Please refer to the key plan. All plans are not to scale and are subject to changes as may be approved by the relevant authorities. All floor areas are estimates and are subject to final survey.