

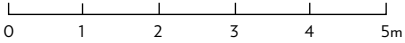
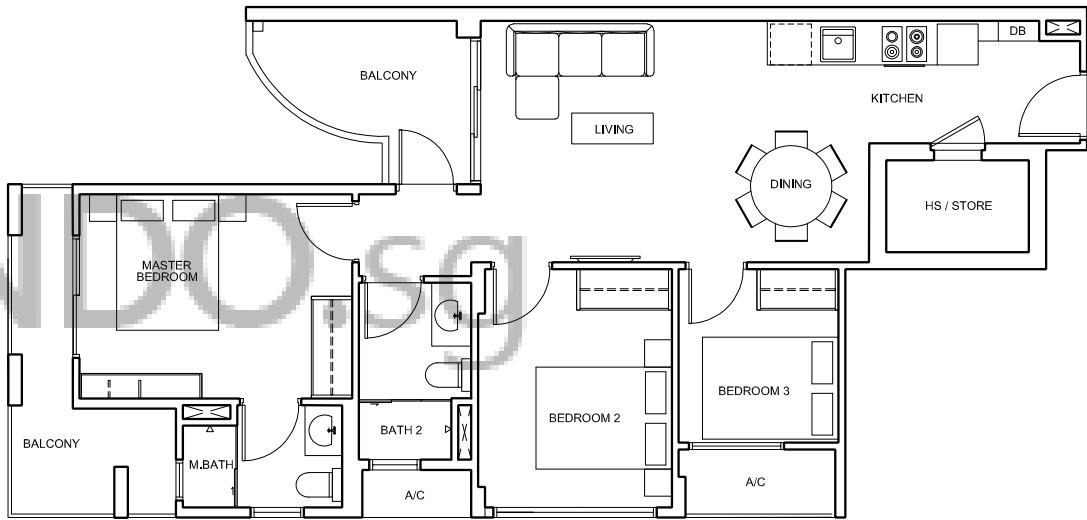
TYPE A1

90 sqm / 969 sqft

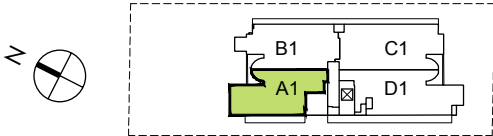
3 Bedroom

Floor \ Unit	#01	#02	#03	#04
Roof	Roof			
5th	A2	B2	C2	D2
4th	A1	B1	C1	D1
3rd	A1	B1	C1	D1
2nd	Pool	B1a	C1a	D1a

Floor \ Unit	-	#02	#03
1st	Carpark	E1	E2



#03-01 #04-01



All floor areas indicated are inclusive of AC Ledge, Balcony and Private Enclosed Space (PES), where applicable. All floor areas are estimate only and subject to final survey. All floor plans are subject to changes as may be required or approved by the relevant authorities.

TYPE A2

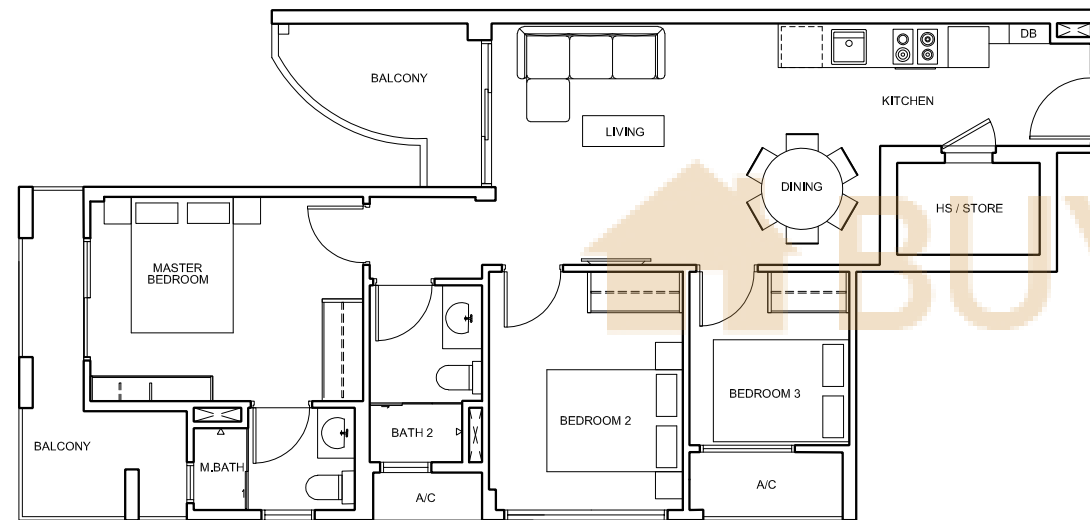
89 sqm / 958 sqft

3 Bedroom

TYPE B1

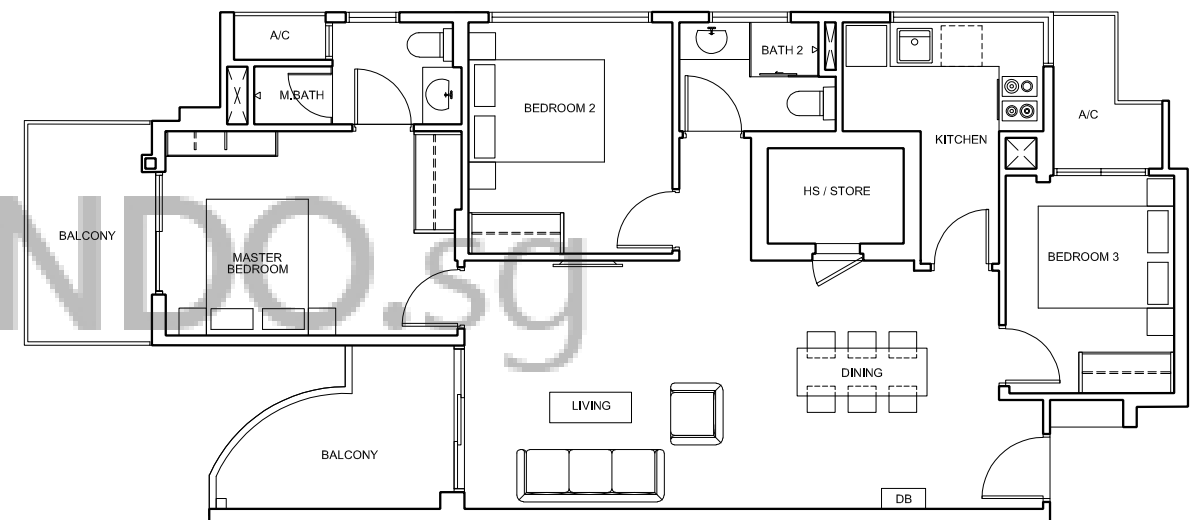
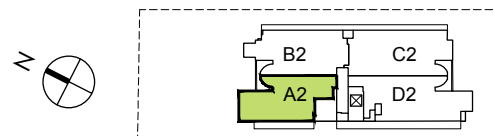
106 sqm / 1141 sqf

3 Bedroom



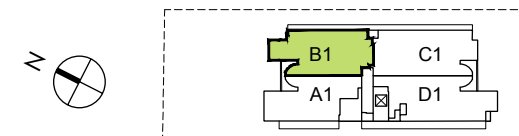
0 1 2 3 4 5m

#05-01



0 1 2 3 4 5m

#03-02 #04-02



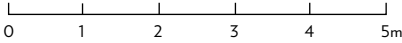
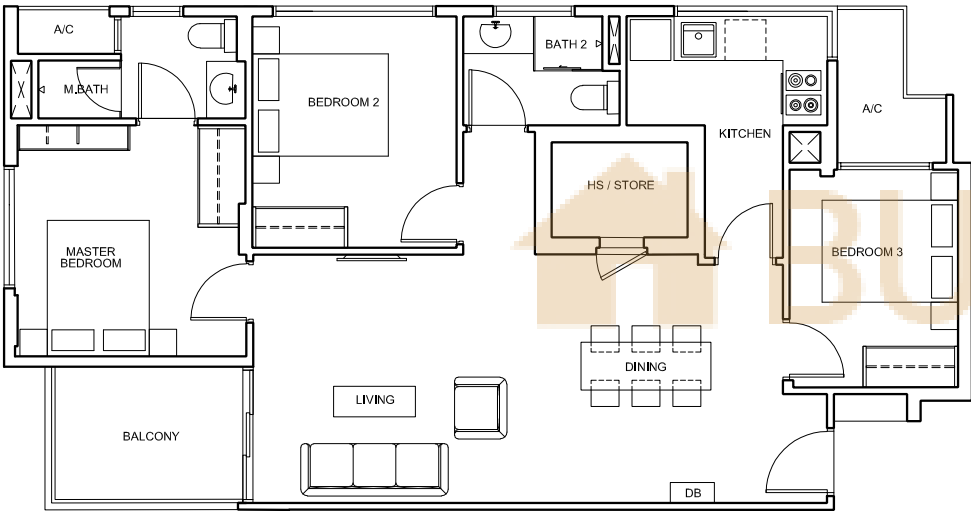
All floor areas indicated are inclusive of AC Ledge, Balcony and Private Enclosed Space (PES), where applicable. All floor areas are estimate only and subject to final survey. All floor plans are subject to changes as may be required or approved by the relevant authorities.

All floor areas indicated are inclusive of AC Ledge, Balcony and Private Enclosed Space (PES), where applicable. All floor areas are estimate only and subject to final survey. All floor plans are subject to changes as may be required or approved by the relevant authorities.

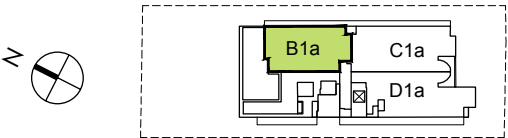
TYPE B1a

97 sqm / 1044 sqft

3 Bedroom



#02-02

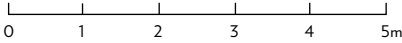
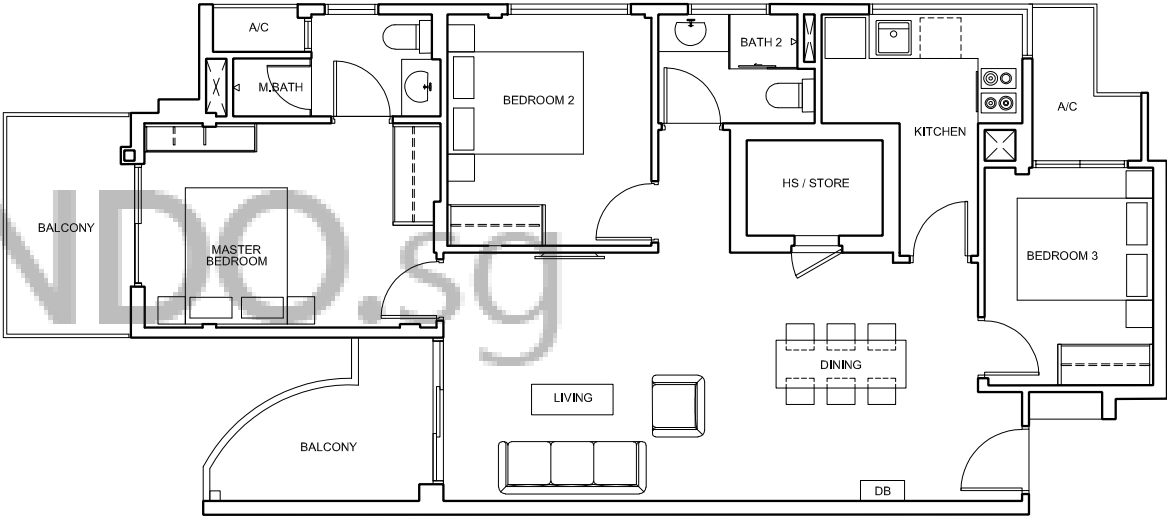


All floor areas indicated are inclusive of AC Ledge, Balcony and Private Enclosed Space (PES), where applicable. All floor areas are estimate only and subject to final survey.
All floor plans are subject to changes as may be required or approved by the relevant authorities.

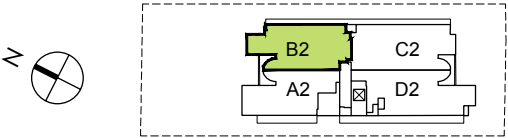
TYPE B2

105 sqm / 1130 sqft

3 Bedroom



#05-02

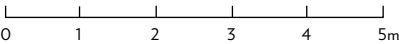
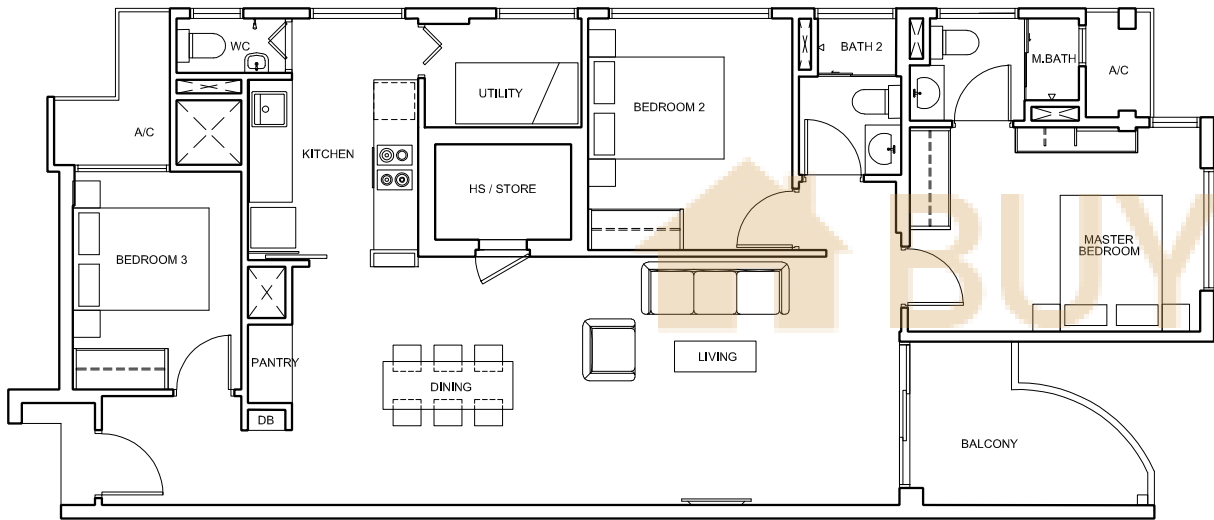


All floor areas indicated are inclusive of AC Ledge, Balcony and Private Enclosed Space (PES), where applicable. All floor areas are estimate only and subject to final survey.
All floor plans are subject to changes as may be required or approved by the relevant authorities.

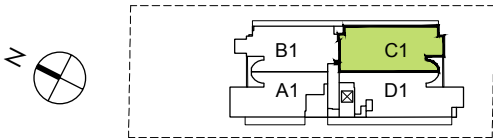
TYPE C1

116 sqm / 1249 sqft

3 Bedroom



#03-03 #04-03

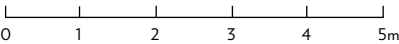
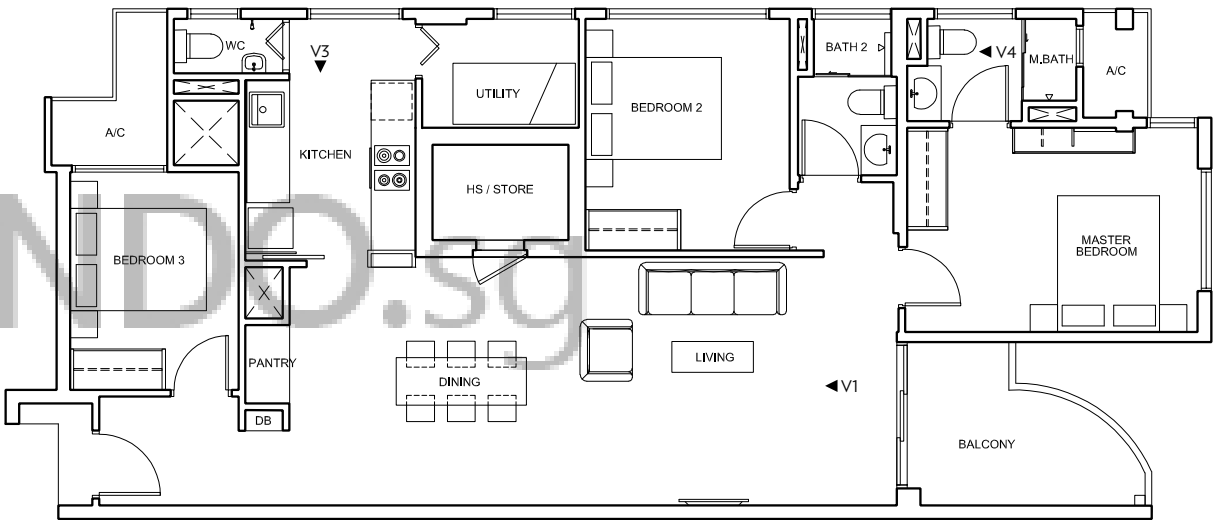


All floor areas indicated are inclusive of AC Ledge, Balcony and Private Enclosed Space (PES), where applicable. All floor areas are estimate only and subject to final survey.
All floor plans are subject to changes as may be required or approved by the relevant authorities.

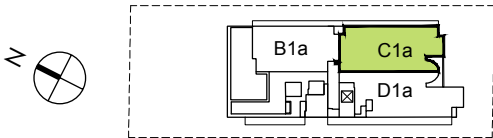
TYPE C1a

116 sqm / 1249 sqft

3 Bedroom



#02-03

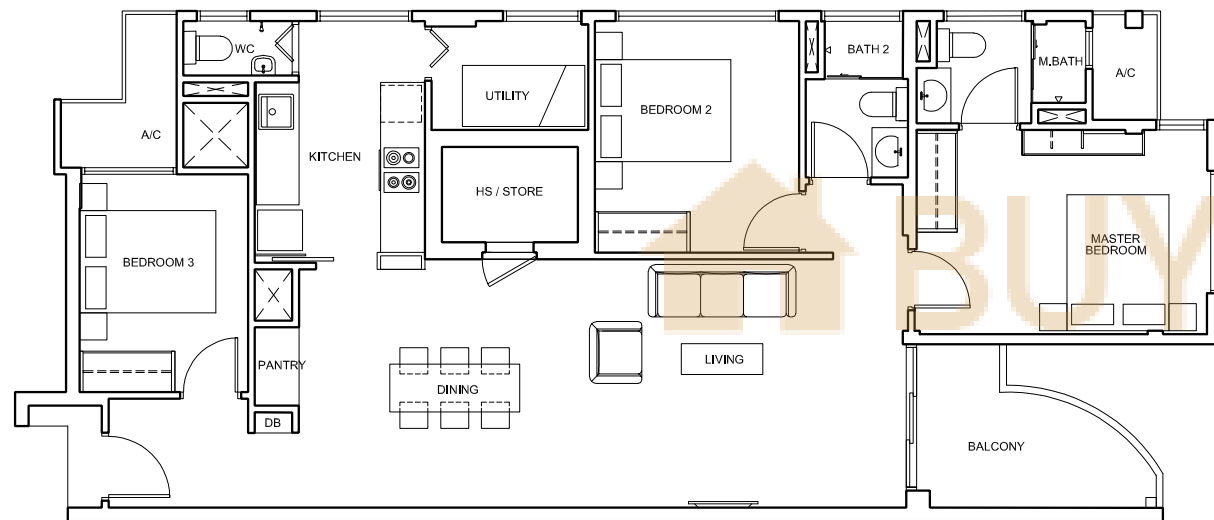


All floor areas indicated are inclusive of AC Ledge, Balcony and Private Enclosed Space (PES), where applicable. All floor areas are estimate only and subject to final survey.
All floor plans are subject to changes as may be required or approved by the relevant authorities.

TYPE C2

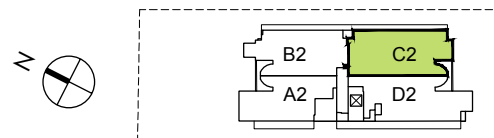
116 sqm / 1249 sqft

3 Bedroom



0 1 2 3 4 5m

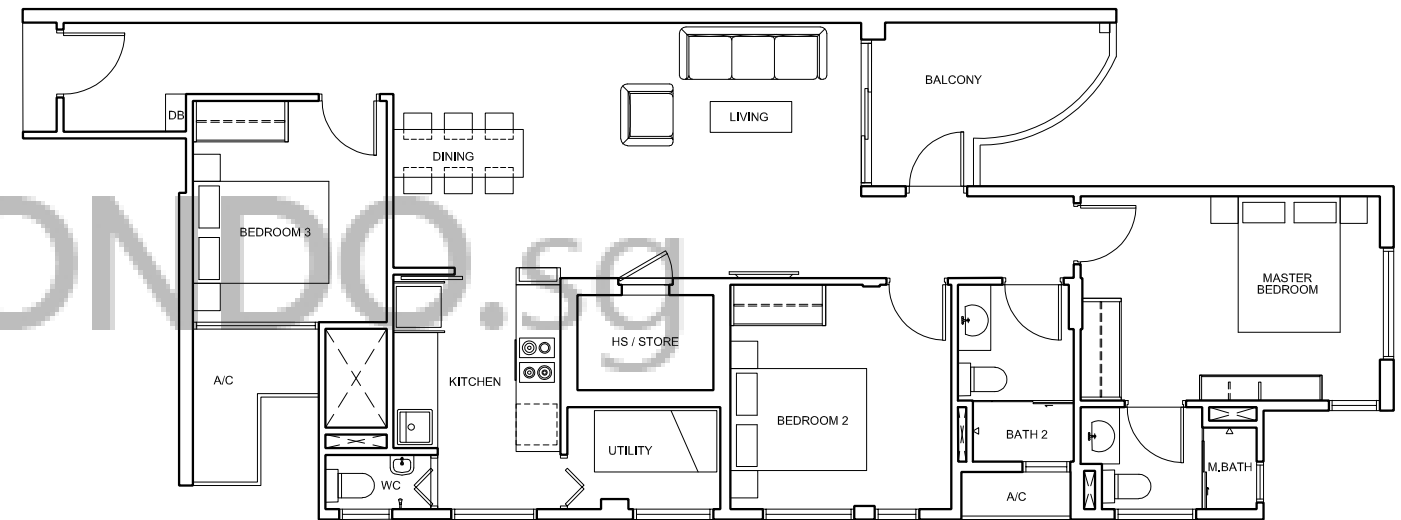
#05-03



TYPE D1

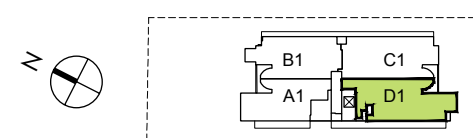
114 sqm / 1227 sqft

3 Bedroom



0 1 2 3 4 5m

#03-04 #04-04



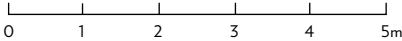
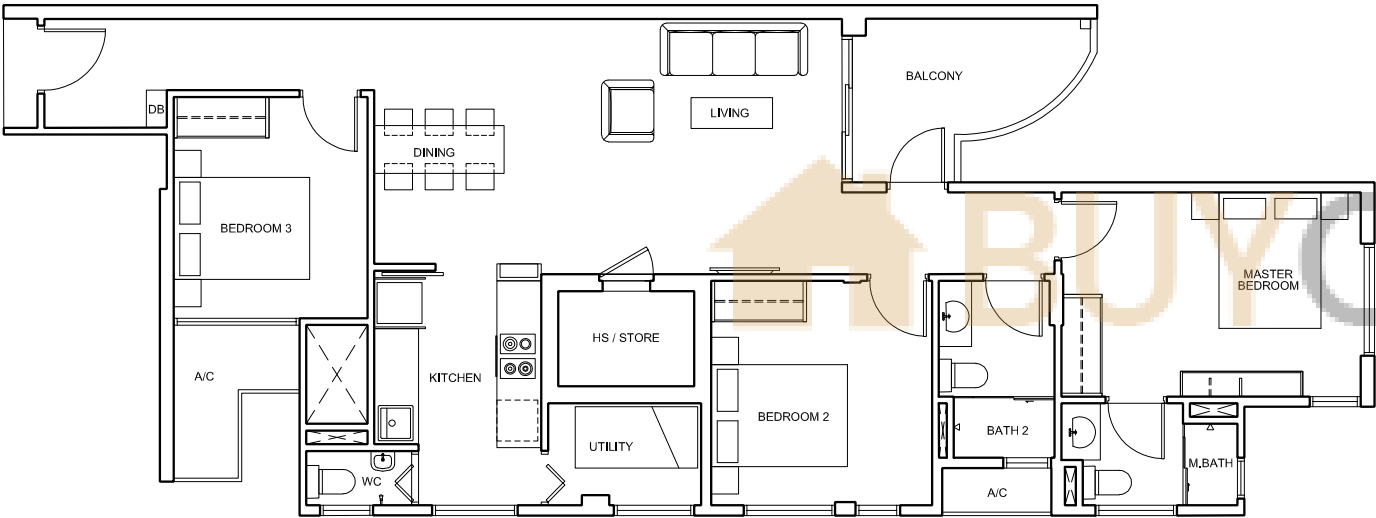
All floor areas indicated are inclusive of AC Ledge, Balcony and Private Enclosed Space (PES), where applicable. All floor areas are estimate only and subject to final survey.
All floor plans are subject to changes as may be required or approved by the relevant authorities.

All floor areas indicated are inclusive of AC Ledge, Balcony and Private Enclosed Space (PES), where applicable. All floor areas are estimate only and subject to final survey.
All floor plans are subject to changes as may be required or approved by the relevant authorities.

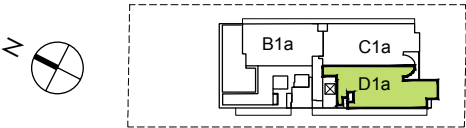
TYPE D1a

114 sqm / 1227 sqft

3 Bedroom



#02-04

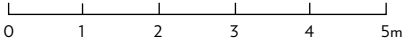
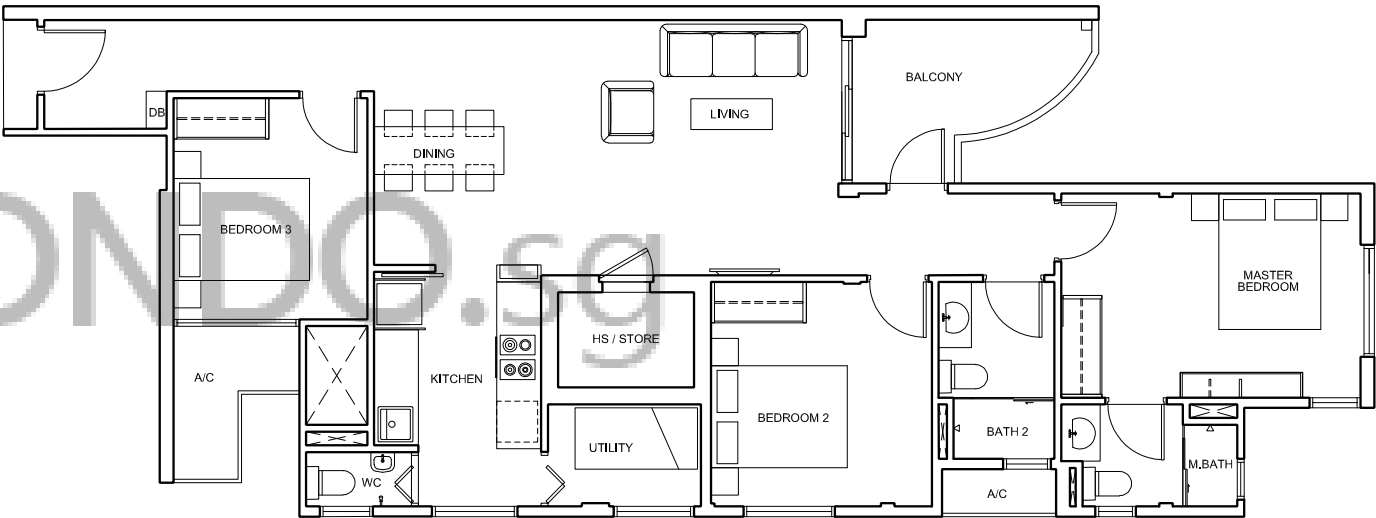


All floor areas indicated are inclusive of AC Ledge, Balcony and Private Enclosed Space (PES), where applicable. All floor areas are estimate only and subject to final survey. All floor plans are subject to changes as may be required or approved by the relevant authorities.

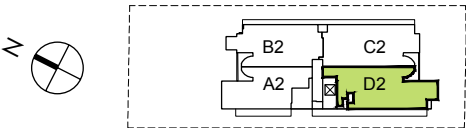
TYPE D2

114 sqm / 1227 sqft

3 Bedroom



#05-04

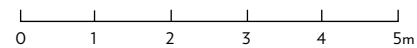
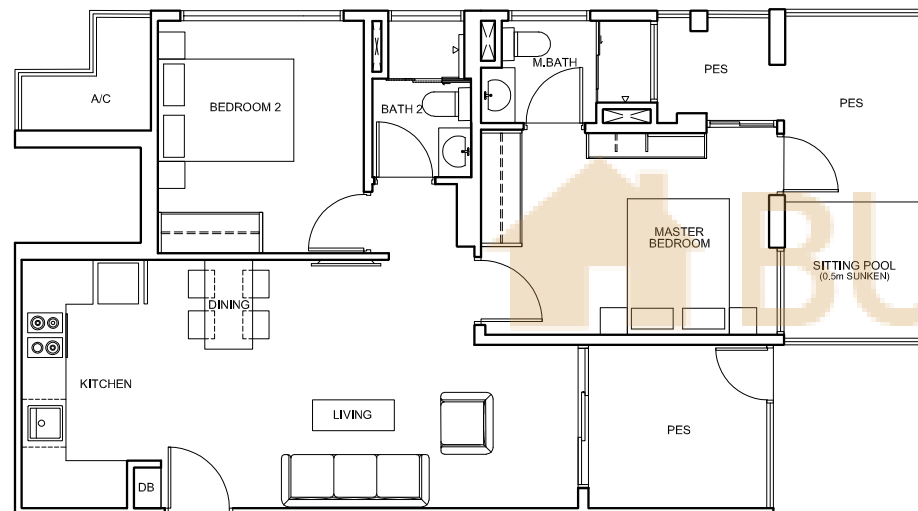


All floor areas indicated are inclusive of AC Ledge, Balcony and Private Enclosed Space (PES), where applicable. All floor areas are estimate only and subject to final survey. All floor plans are subject to changes as may be required or approved by the relevant authorities.

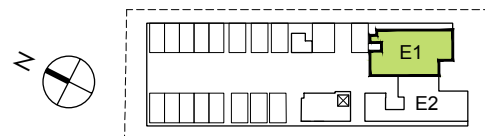
TYPE E1

88 sqm / 947 sqft

2 Bedroom



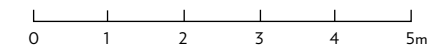
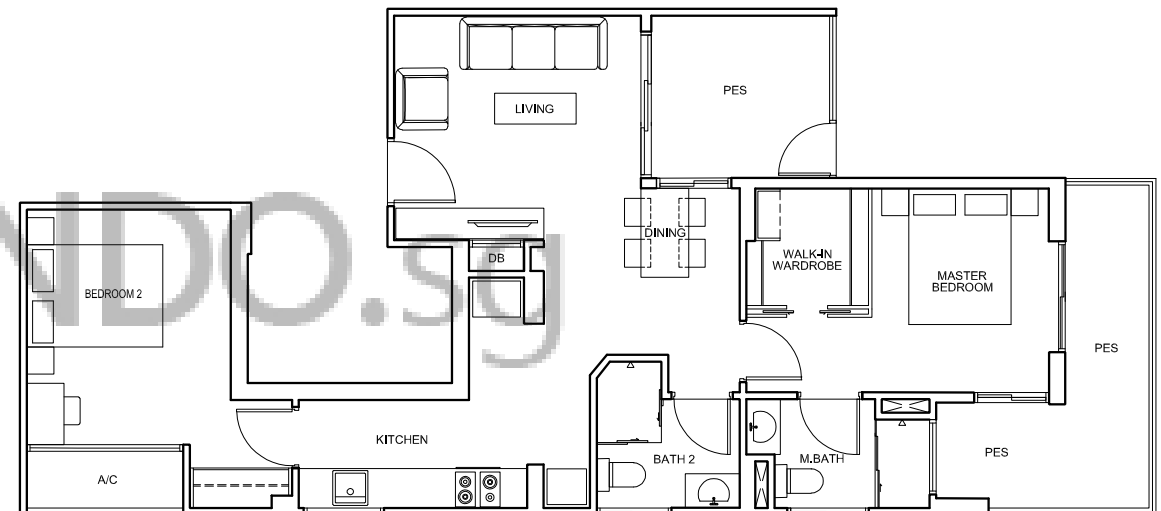
#01-02



TYPE E2

86 sqm / 926 sqft

2 Bedroom



#01-03

