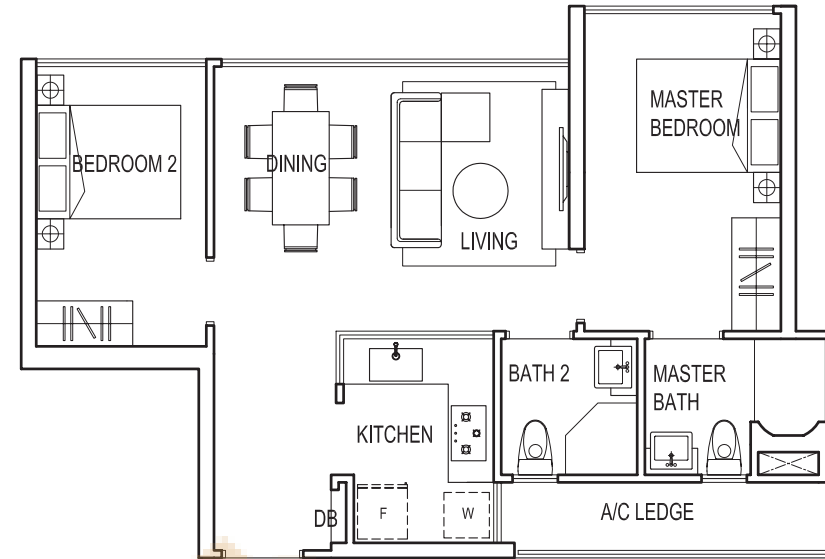


2-Bedroom

Type A1

Area: 64 sq m / 689 sq ft
(inclusive of 5 sq m A/C Ledge)

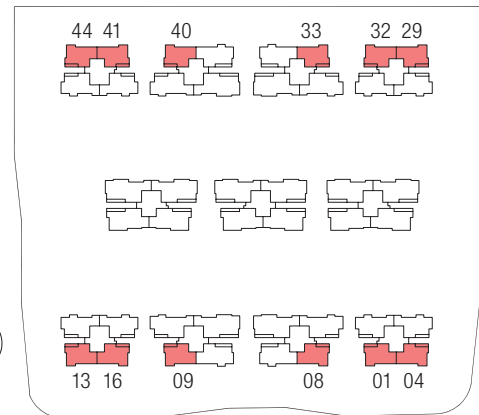
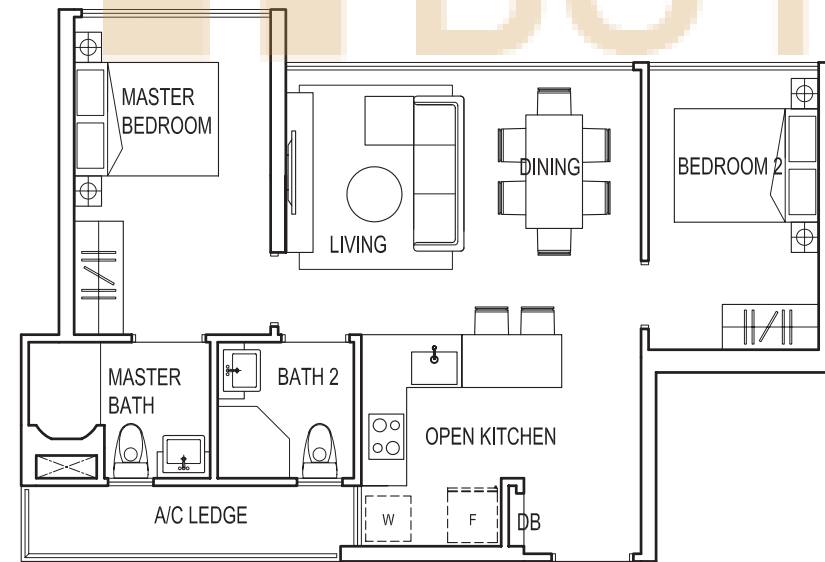
- #01-01 to #15-01
- #01-09 to #15-09
- #01-13 to #15-13
- #01-29 to #15-29
- #01-33 to #15-33
- #01-41 to #15-41



Type A1a

Area: 64 sq m / 689 sq ft
(inclusive of 5 sq m A/C Ledge)

- #01-04 to #15-04
- #01-08 to #15-08
- #01-16 to #15-16
- #01-32 to #15-32
- #01-40 to #15-40
- #01-44 to #15-44



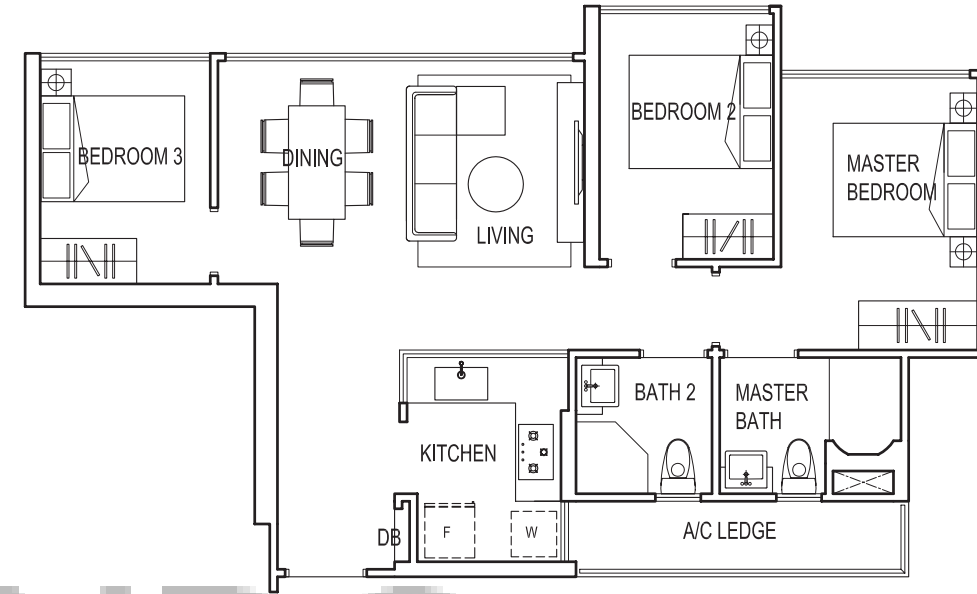
All plans are subject to change as may be required or approved by the relevant authorities. Indicated floor areas are approximate and are subject to final survey.

3-Bedroom

Type B1

Area: 73 sq m / 786 sq ft
(inclusive of 5 sq m A/C Ledge)

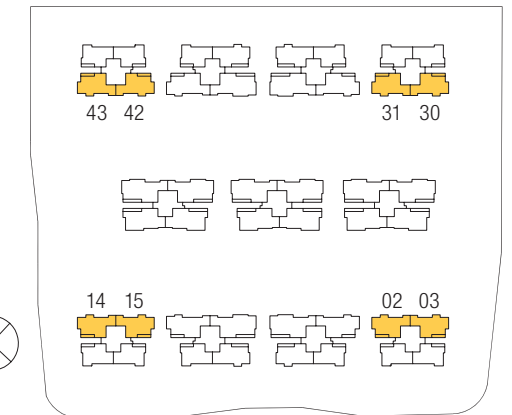
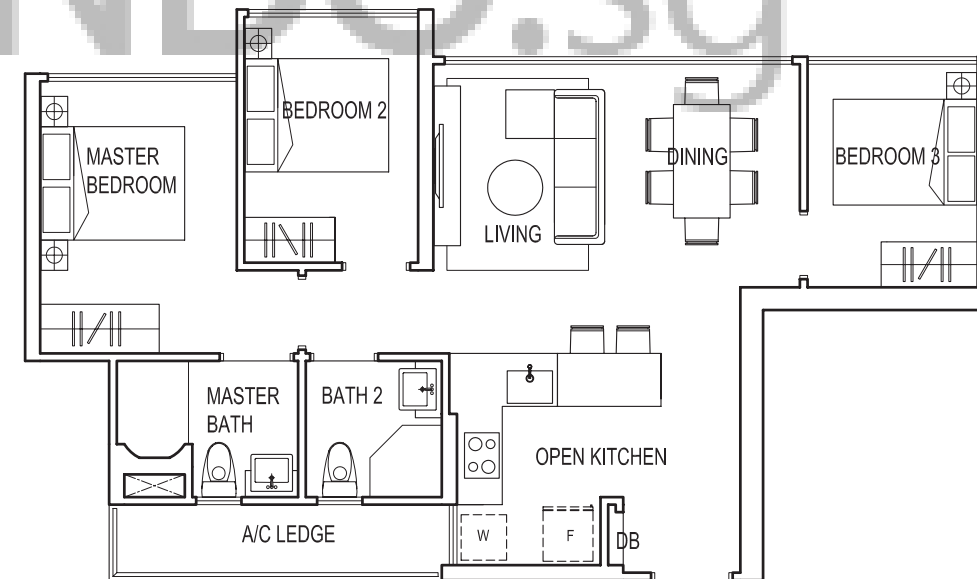
- #01-03 to #15-03
- #01-15 to #15-15
- #01-31 to #15-31
- #01-43 to #15-43



Type B1a

Area: 73 sq m / 786 sq ft
(inclusive of 5 sq m A/C Ledge)

- #01-02 to #15-02
- #01-14 to #15-14
- #01-30 to #15-30
- #01-42 to #15-42



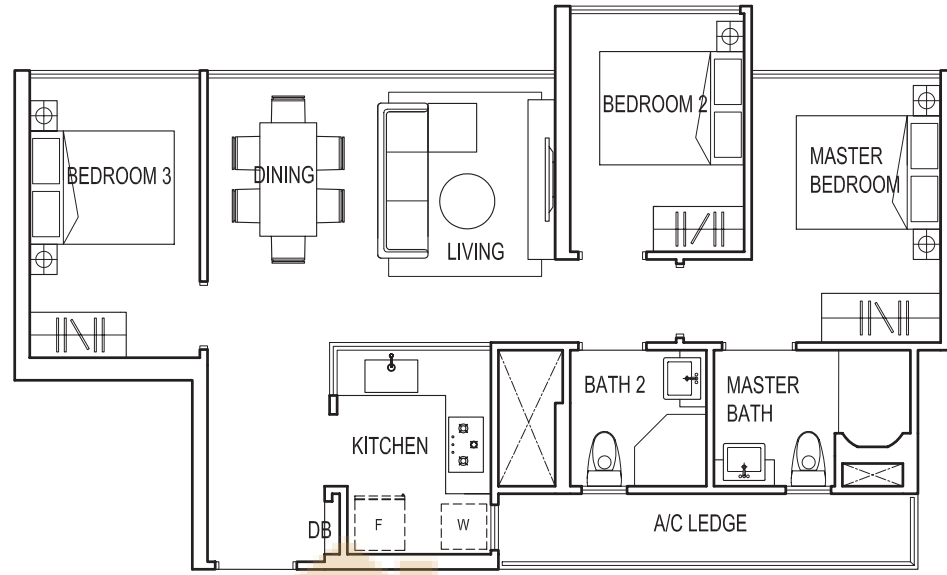
All plans are subject to change as may be required or approved by the relevant authorities. Indicated floor areas are approximate and are subject to final survey.

3-Bedroom

Type B2

Area: 74 sq m / 797 sq ft
(inclusive of 6 sq m A/C Ledge)

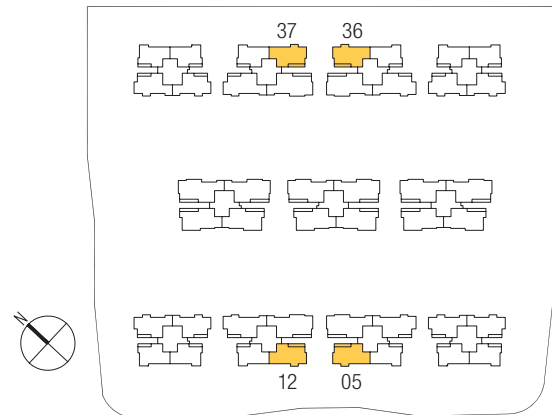
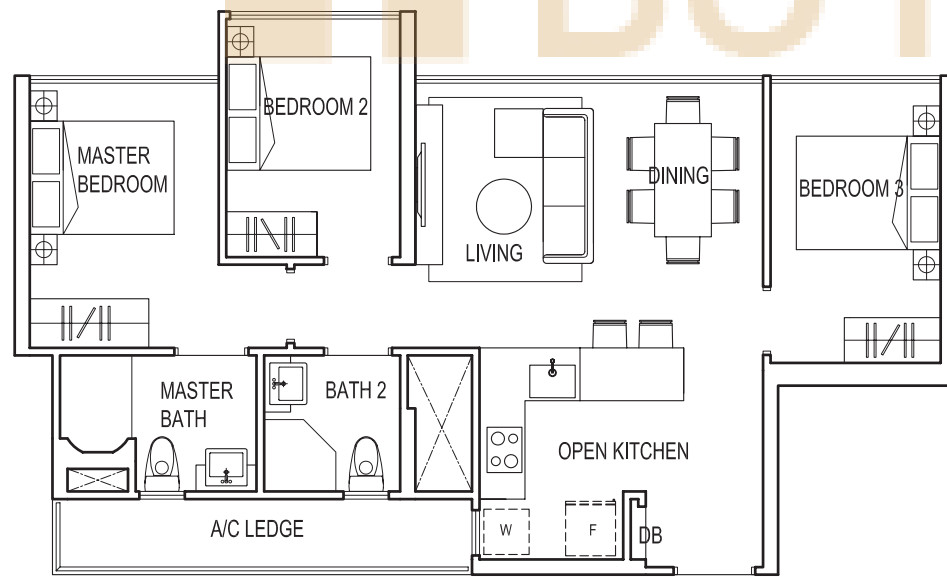
#01-05 to #15-05
#01-37 to #15-37



Type B2a

Area: 74 sq m / 797 sq ft
(inclusive of 6 sq m A/C Ledge)

#01-12 to #15-12
#01-36 to #15-36



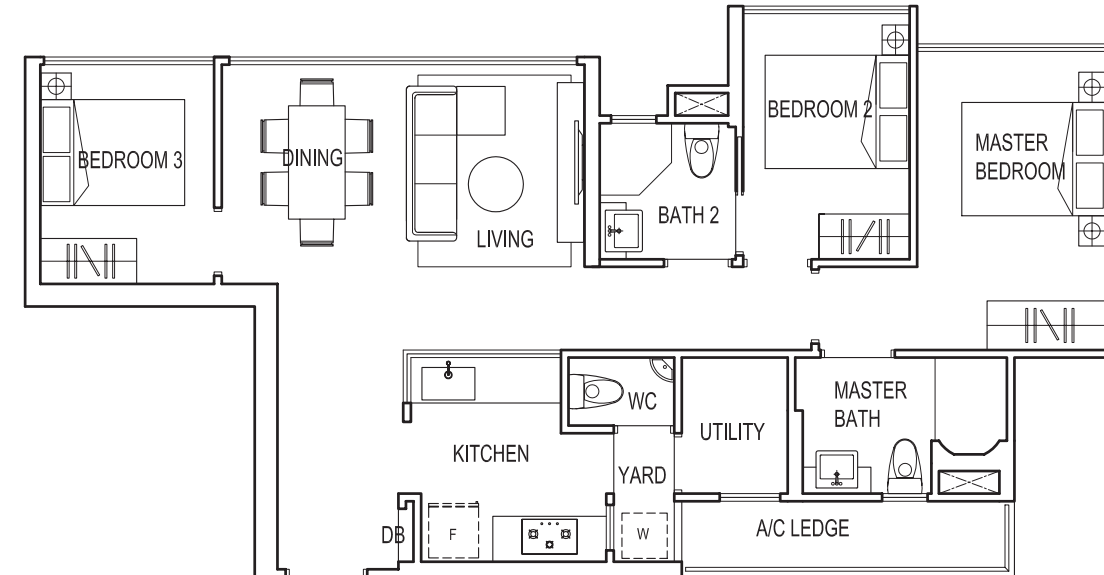
All plans are subject to change as may be required or approved by the relevant authorities. Indicated floor areas are approximate and are subject to final survey.

3-Bedroom Premium

Type C1

Area: 83 sq m / 893 sq ft
(inclusive of 5 sq m A/C Ledge)

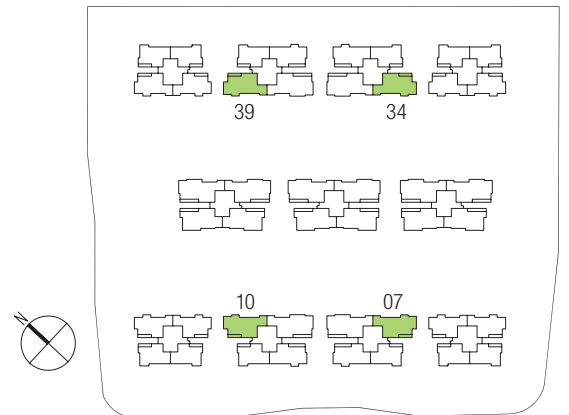
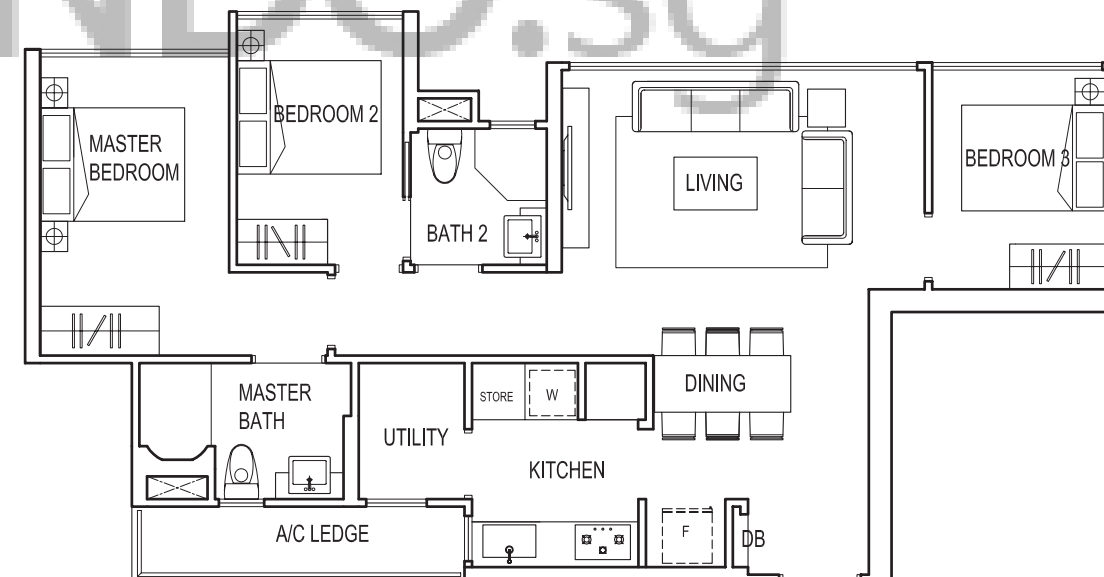
#01-07 to #15-07
#01-39 to #15-39



Type C1a

Area: 83 sq m / 893 sq ft
(inclusive of 5 sq m A/C Ledge)

#01-10 to #15-10
#01-34 to #15-34



All plans are subject to change as may be required or approved by the relevant authorities. Indicated floor areas are approximate and are subject to final survey.

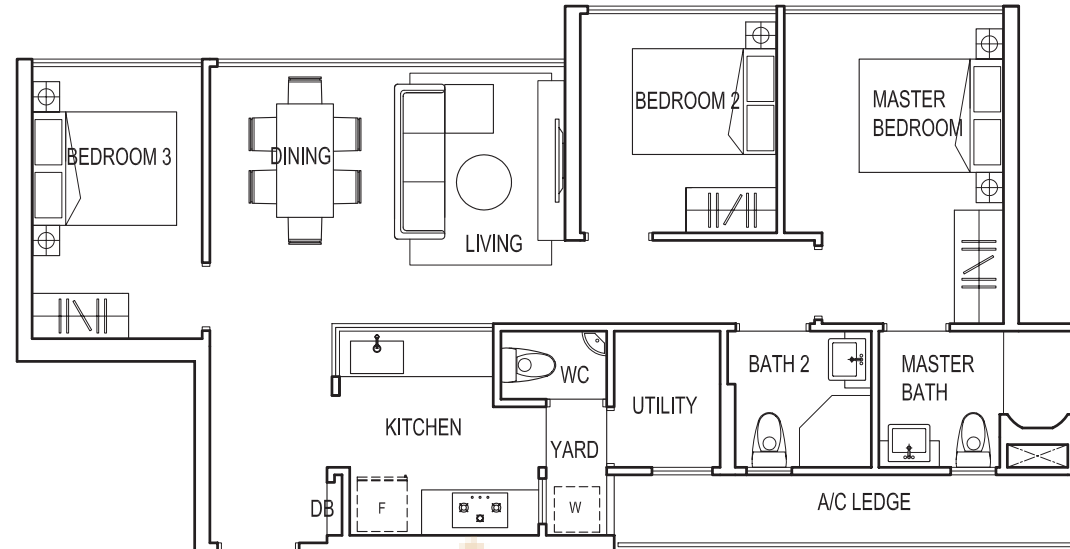
3-Bedroom Premium

4-Bedroom

Type C2

Area: 85 sq m / 915 sq ft
(inclusive of 7 sq m A/C Ledge)

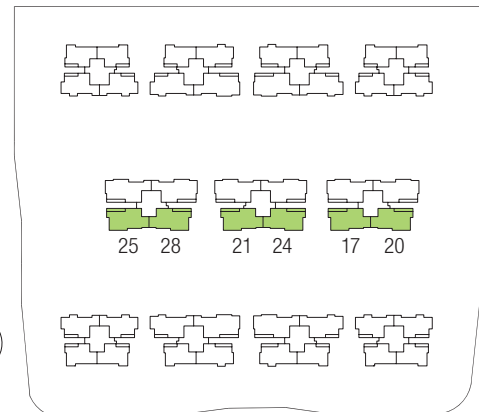
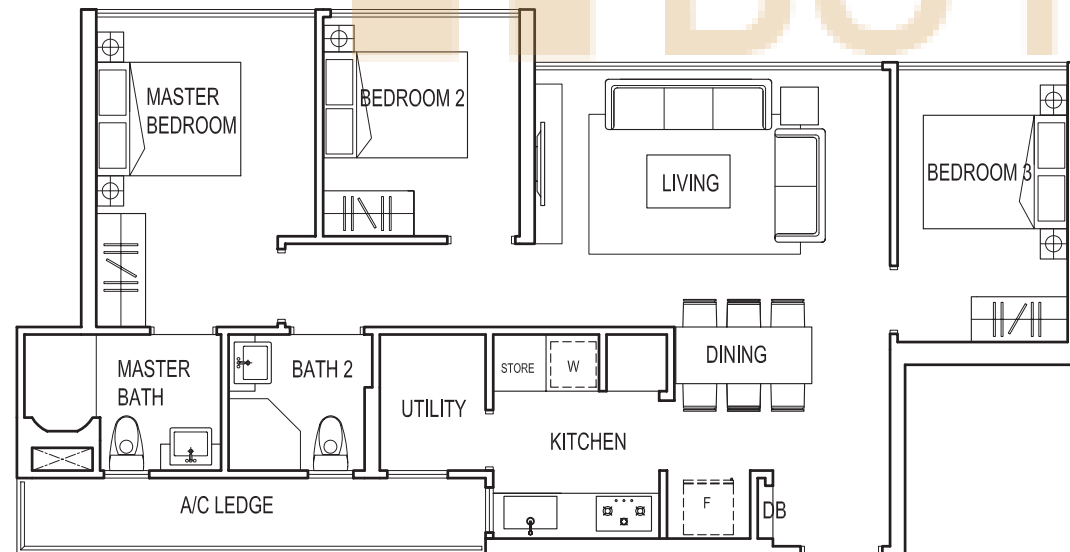
#01-17 to #15-17
#01-21 to #15-21
#01-25 to #15-25



Type C2a

Area: 85 sq m / 915 sq ft
(inclusive of 7 sq m A/C Ledge)

#01-20 to #15-20
#01-24 to #15-24
#01-28 to #15-28

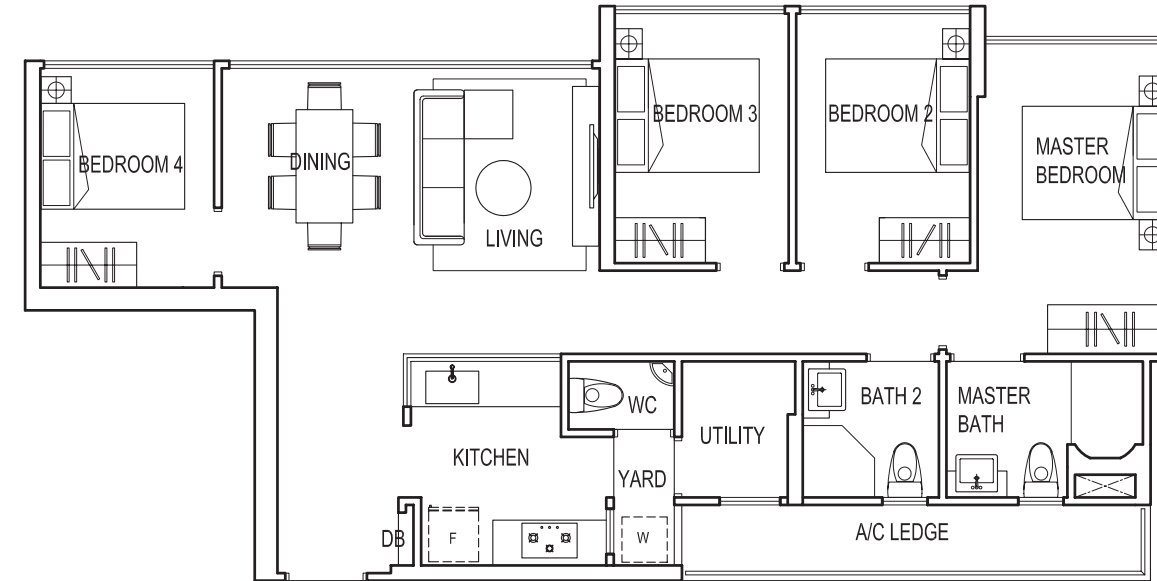


All plans are subject to change as may be required or approved by the relevant authorities. Indicated floor areas are approximate and are subject to final survey.

Type D1

Area: 95 sq m / 1023 sq ft
(inclusive of 7 sq m A/C Ledge)

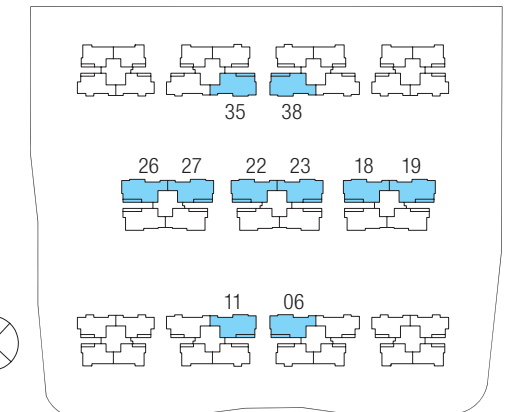
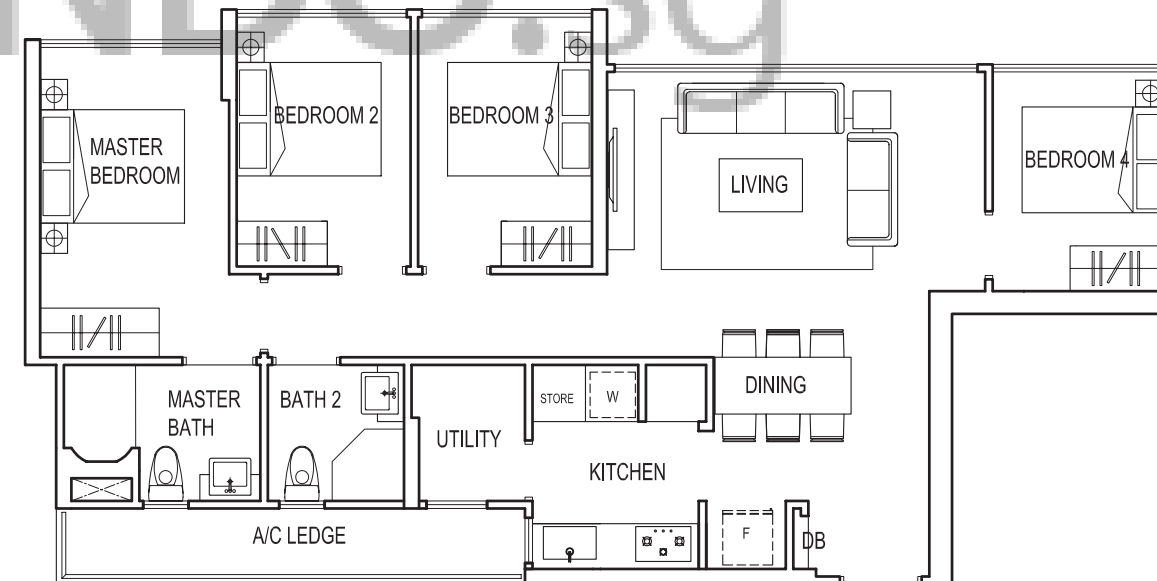
#01-11 to #15-11
#01-19 to #15-19
#01-23 to #15-23
#01-27 to #15-27
#01-35 to #15-35



Type D1a

Area: 95 sq m / 1023 sq ft
(inclusive of 7 sq m A/C Ledge)

#01-06 to #15-06
#01-18 to #15-18
#01-22 to #15-22
#01-26 to #15-26
#01-38 to #15-38



All plans are subject to change as may be required or approved by the relevant authorities. Indicated floor areas are approximate and are subject to final survey.