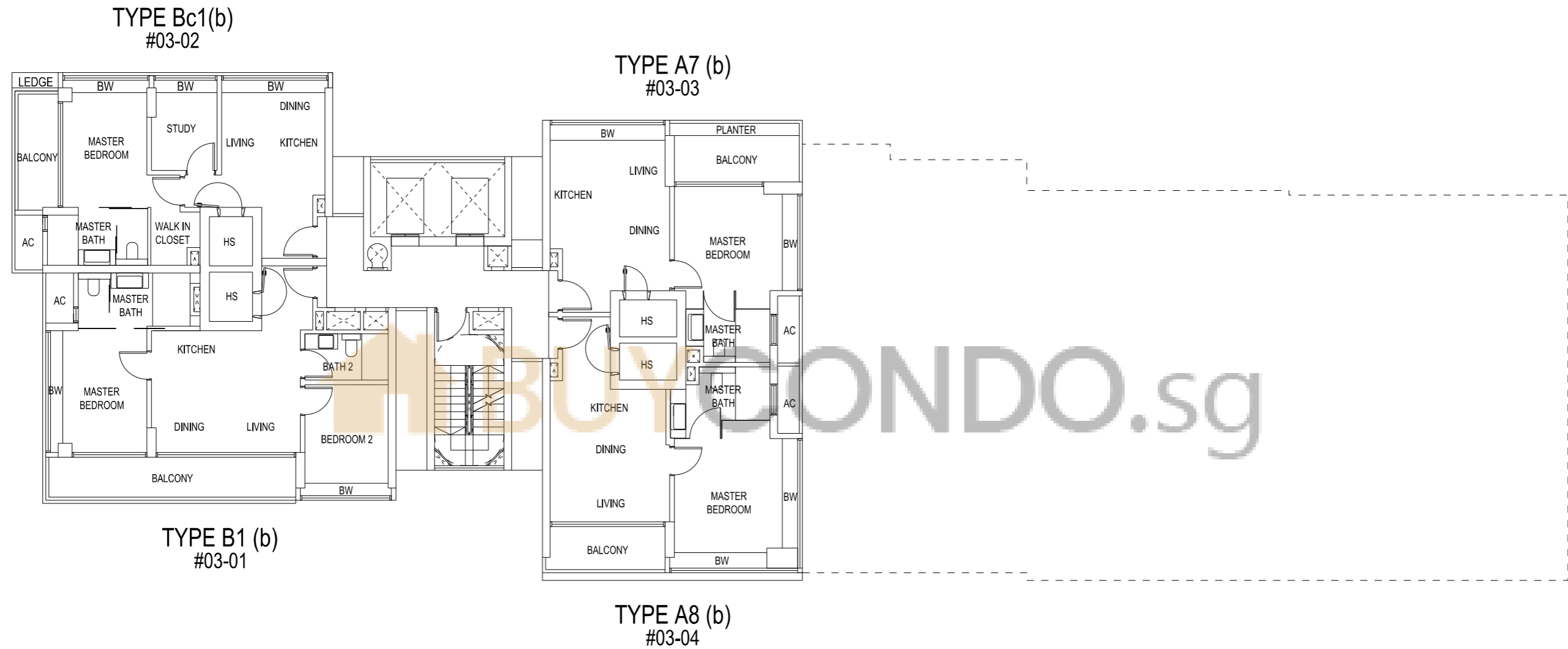


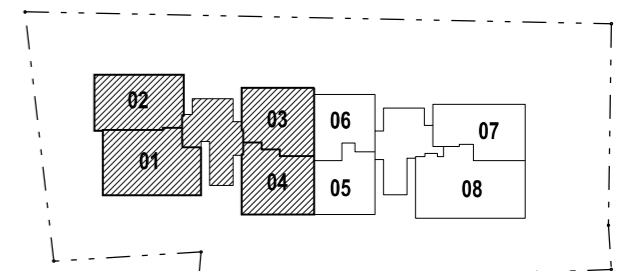
# The Cape



## 3RD STOREY PLAN

25 AMBER ROAD

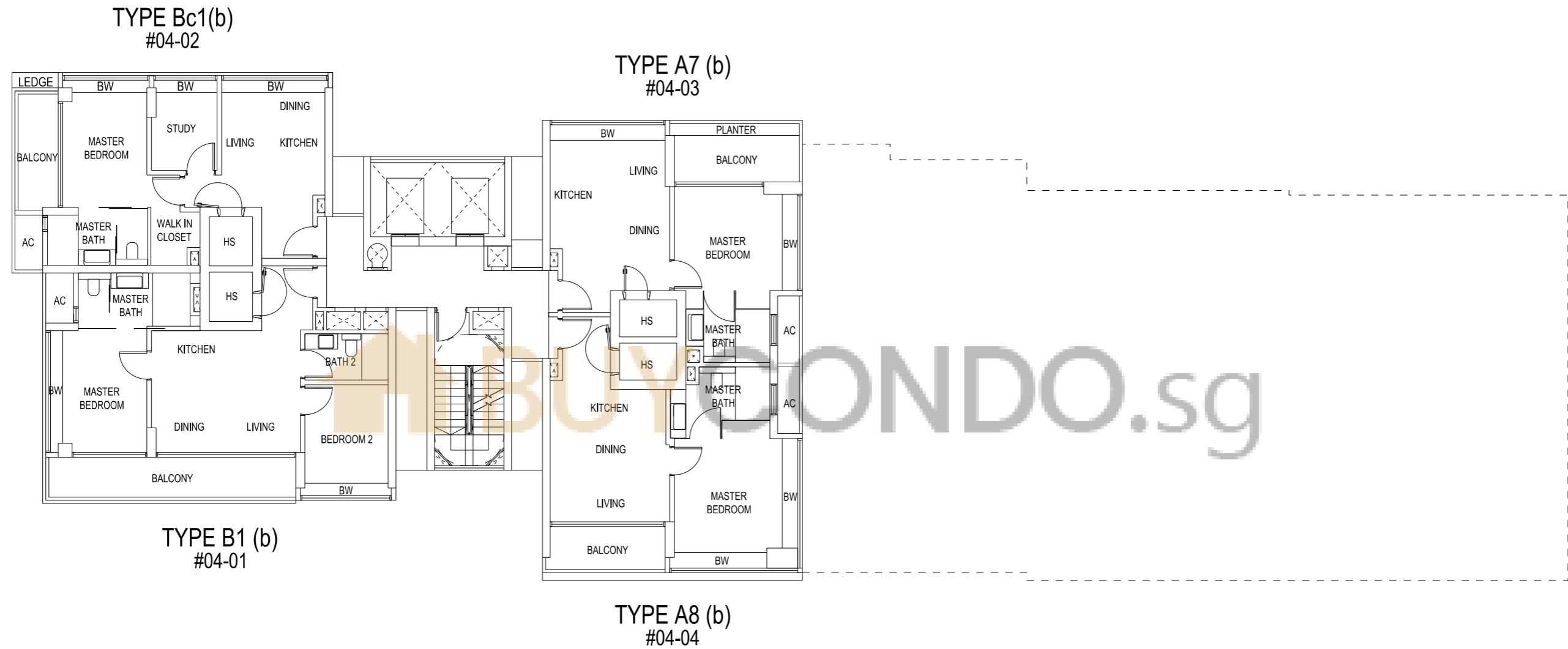
Disclaimer: The above plans are subject to change as may be approved by the relevant authorities



**KEY PLAN**

The key plan is not to scale.

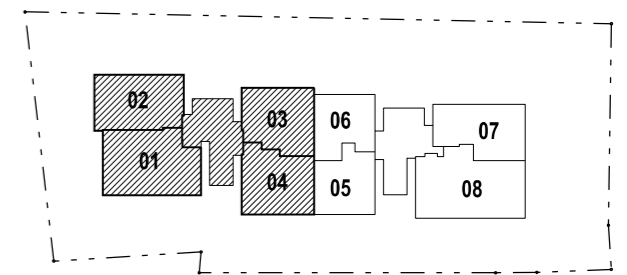
# The Cape



## 4TH STOREY PLAN

25 AMBER ROAD

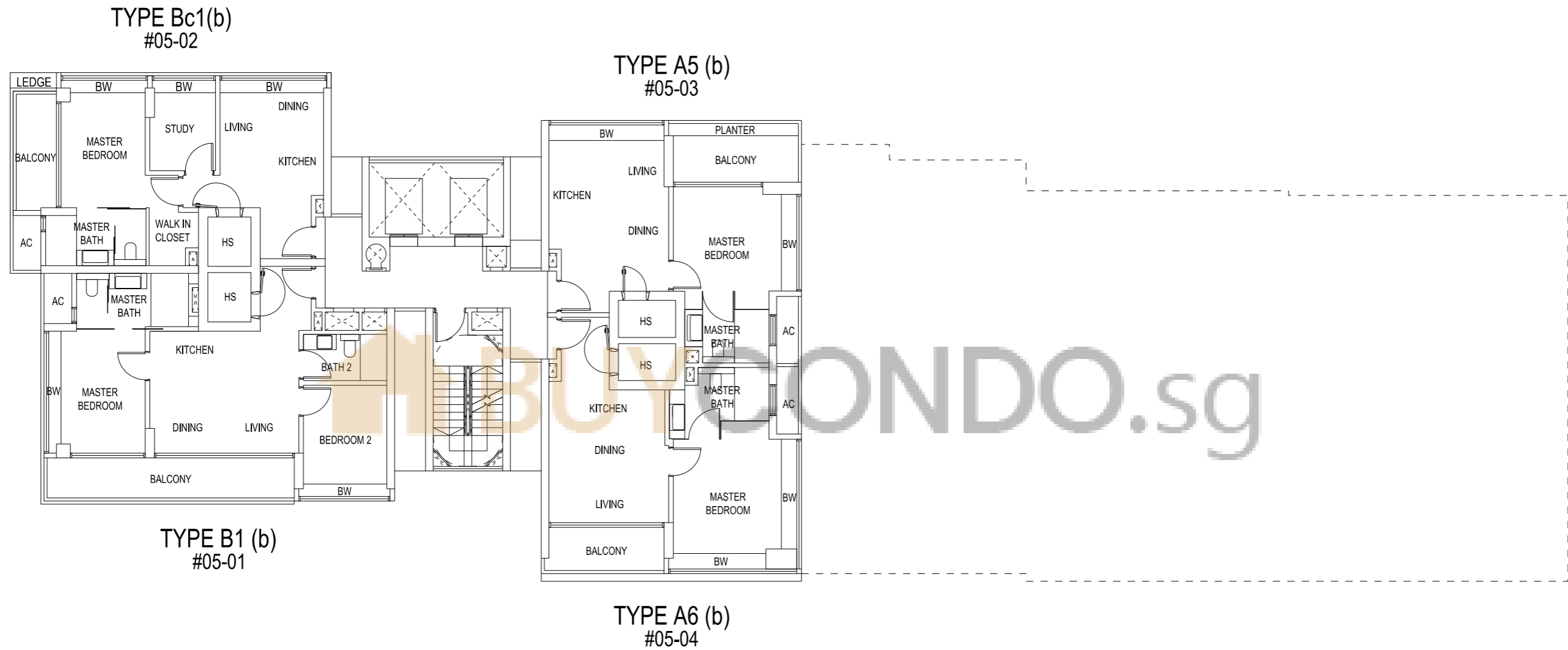
Disclaimer: The above plans are subject to change as may be approved by the relevant authorities



**KEY PLAN**

The key plan is not to scale.

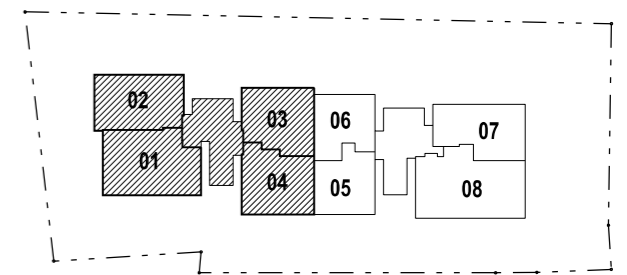
# The Cape



## 5TH STOREY PLAN

25 AMBER ROAD

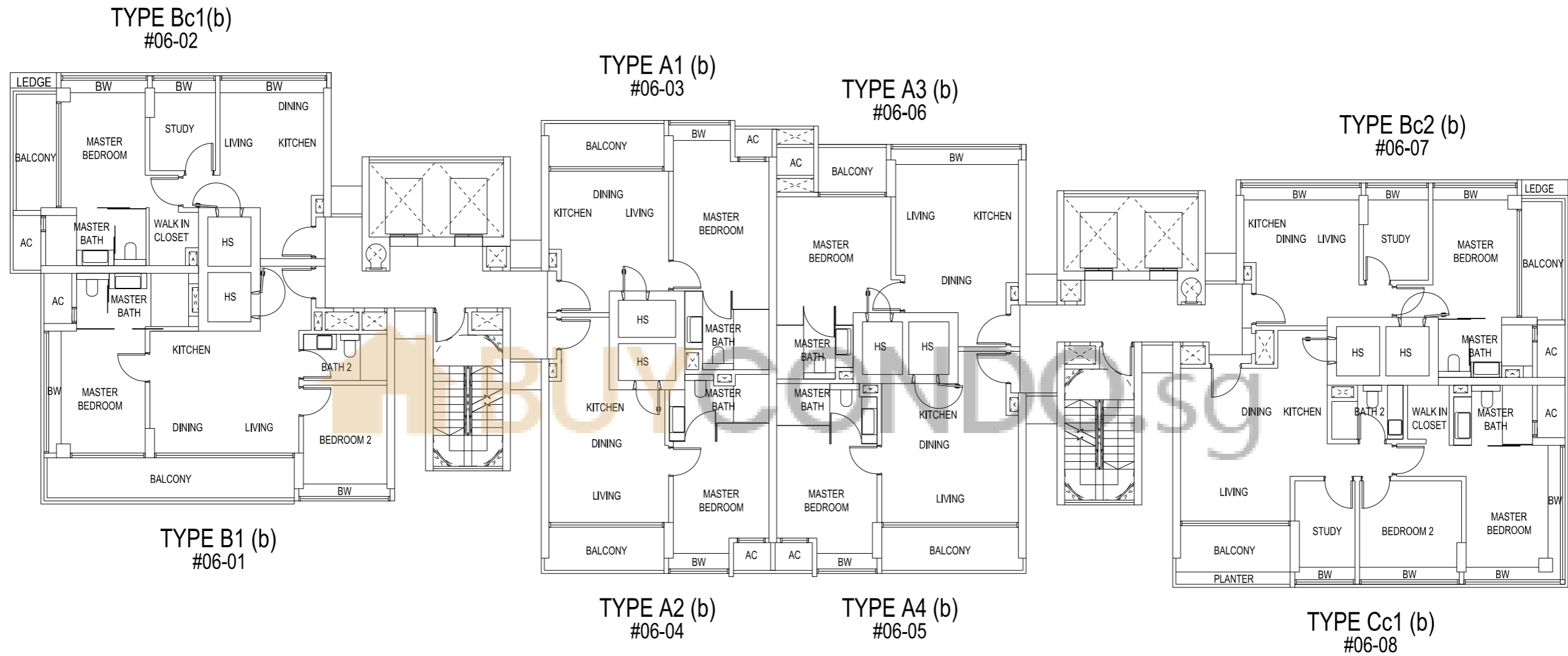
Disclaimer: The above plans are subject to change as may be approved by the relevant authorities



**KEY PLAN**

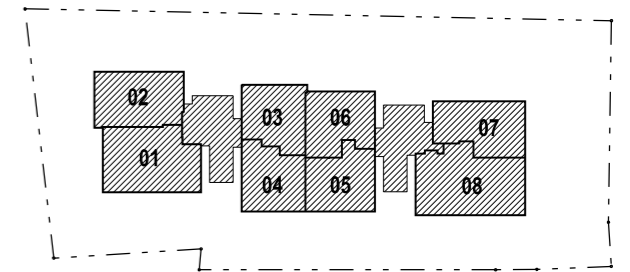
The key plan is not to scale.

# The Cape



## 6TH TYPICAL STOREY PLAN

25 AMBER ROAD

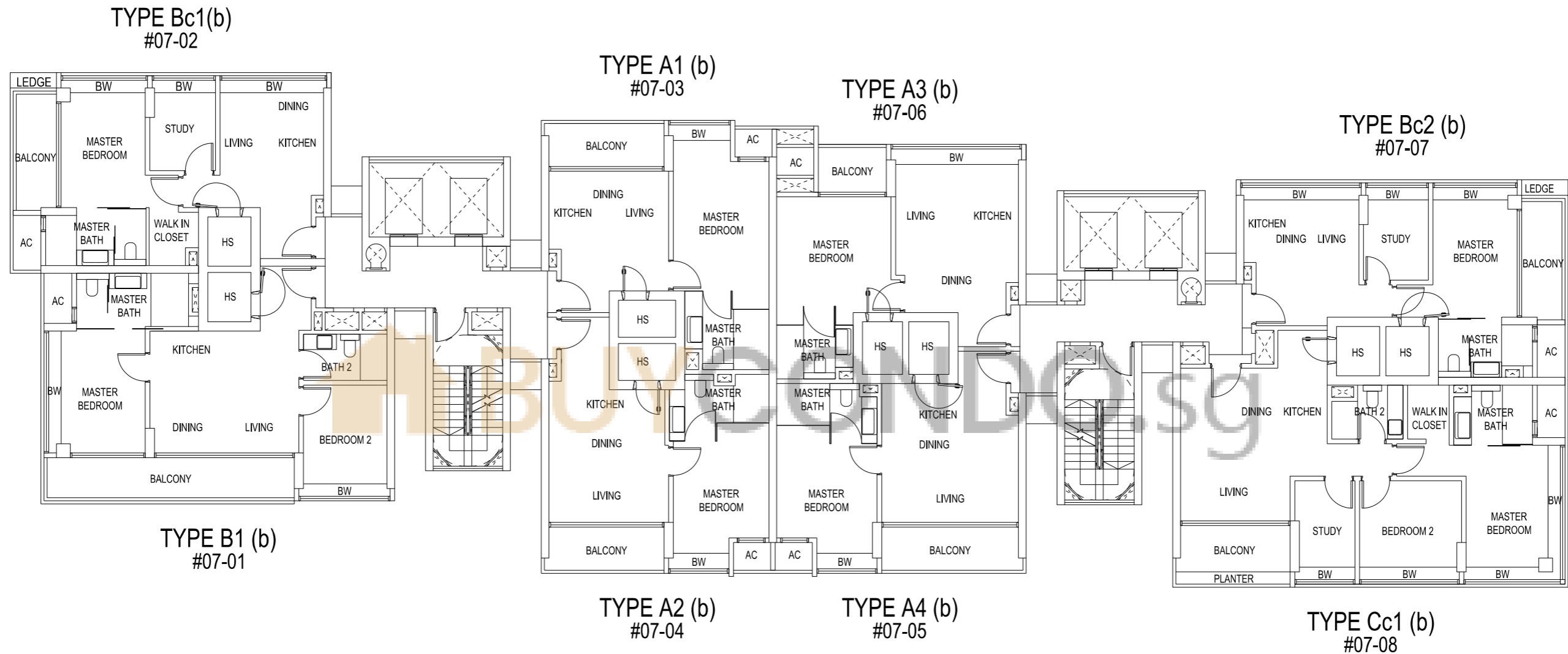


KEY PLAN

The key plan is not to scale.

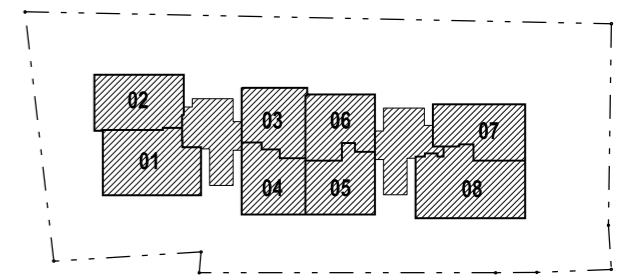
Disclaimer: The above plans are subject to change as may be approved by the relevant authorities

# The Cape



## 7TH TYPICAL STOREY PLAN

25 AMBER ROAD

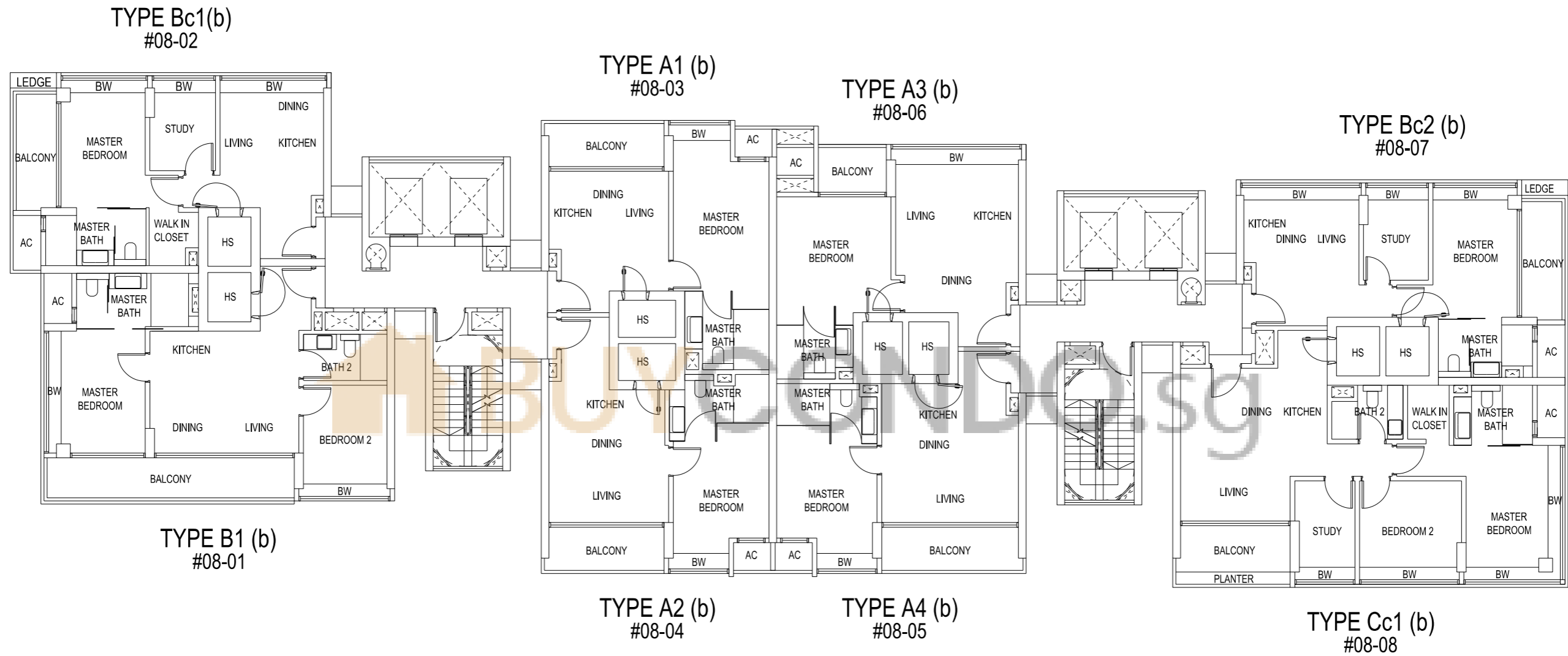


KEY PLAN

The key plan is not to scale.

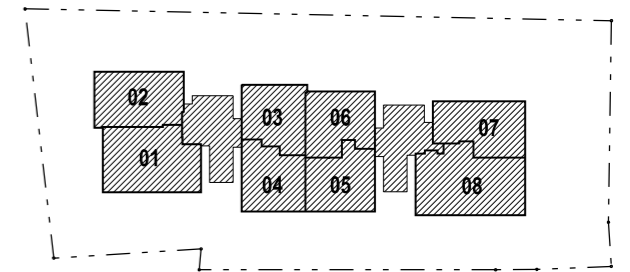
Disclaimer: The above plans are subject to change as may be approved by the relevant authorities

# The Cape



## 8TH TYPICAL STOREY PLAN

25 AMBER ROAD

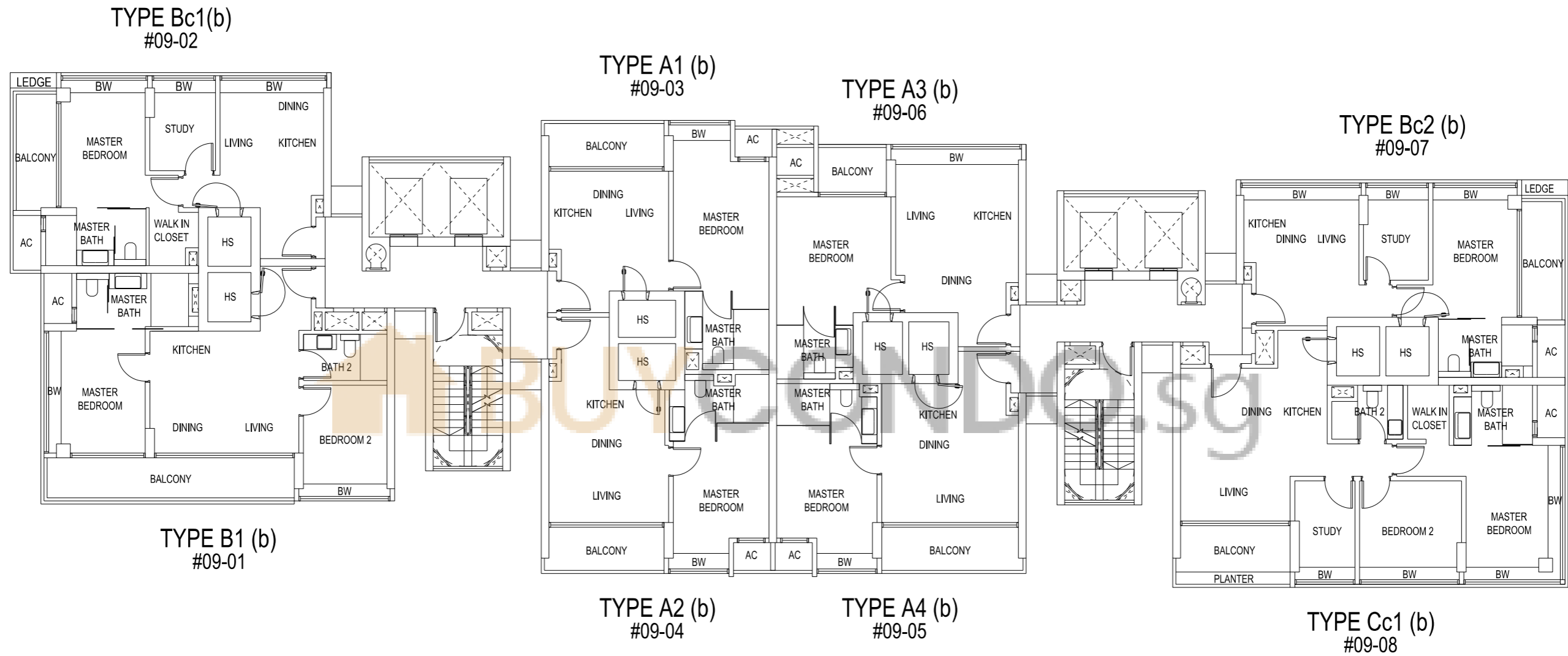


KEY PLAN

The key plan is not to scale.

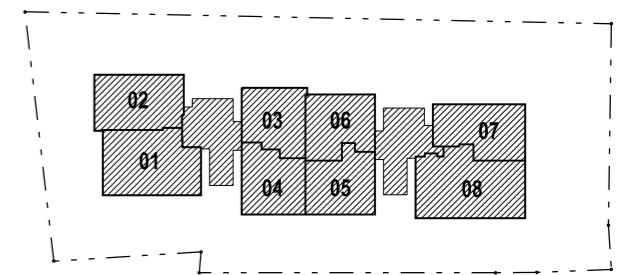
Disclaimer: The above plans are subject to change as may be approved by the relevant authorities

# The Cape



## 9TH TYPICAL STOREY PLAN

25 AMBER ROAD

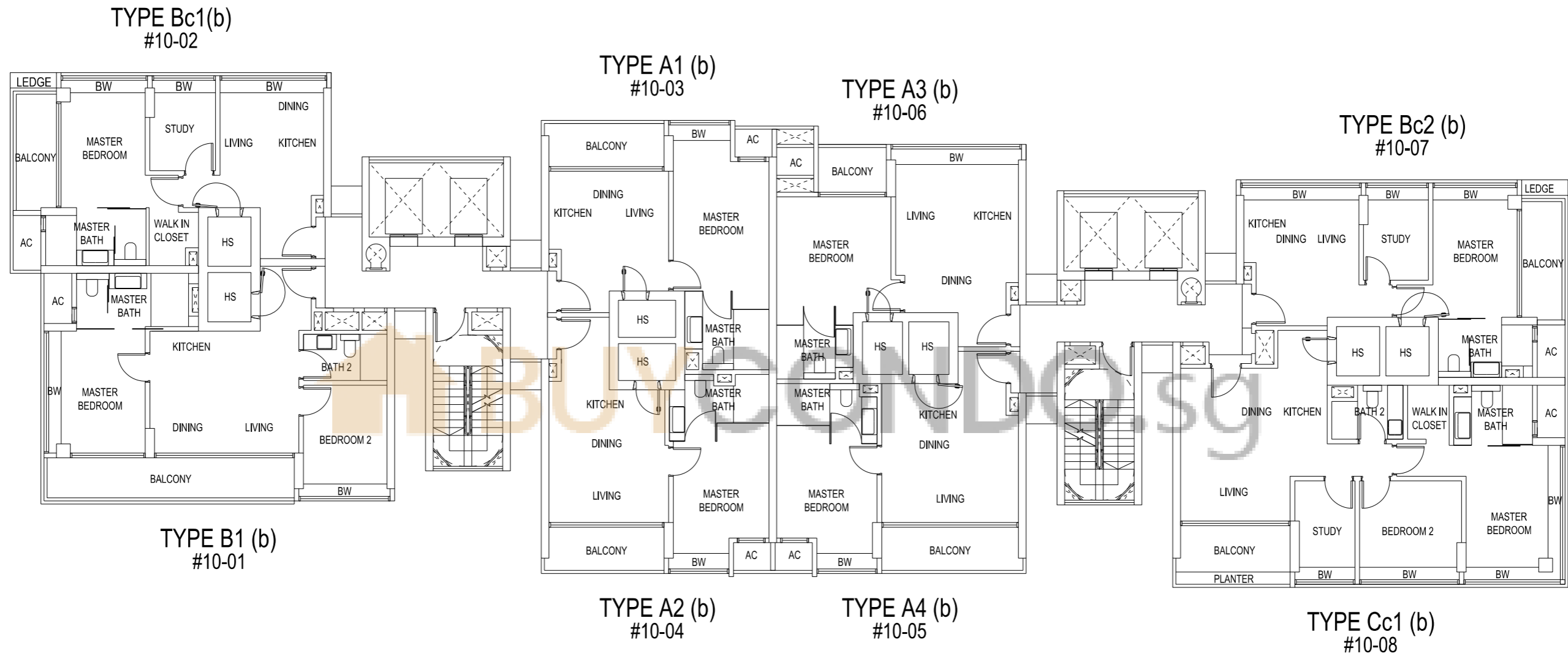


KEY PLAN

The key plan is not to scale.

Disclaimer: The above plans are subject to change as may be approved by the relevant authorities

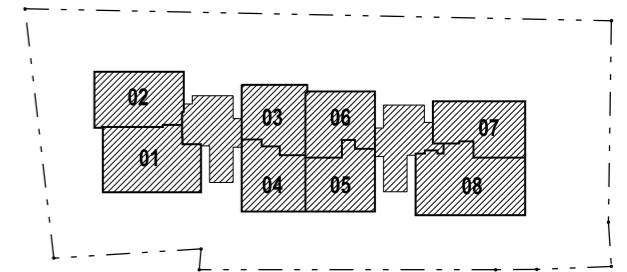
# The Cape



## 10TH TYPICAL STOREY PLAN

25 AMBER ROAD

Disclaimer: The above plans are subject to change as may be approved by the relevant authorities

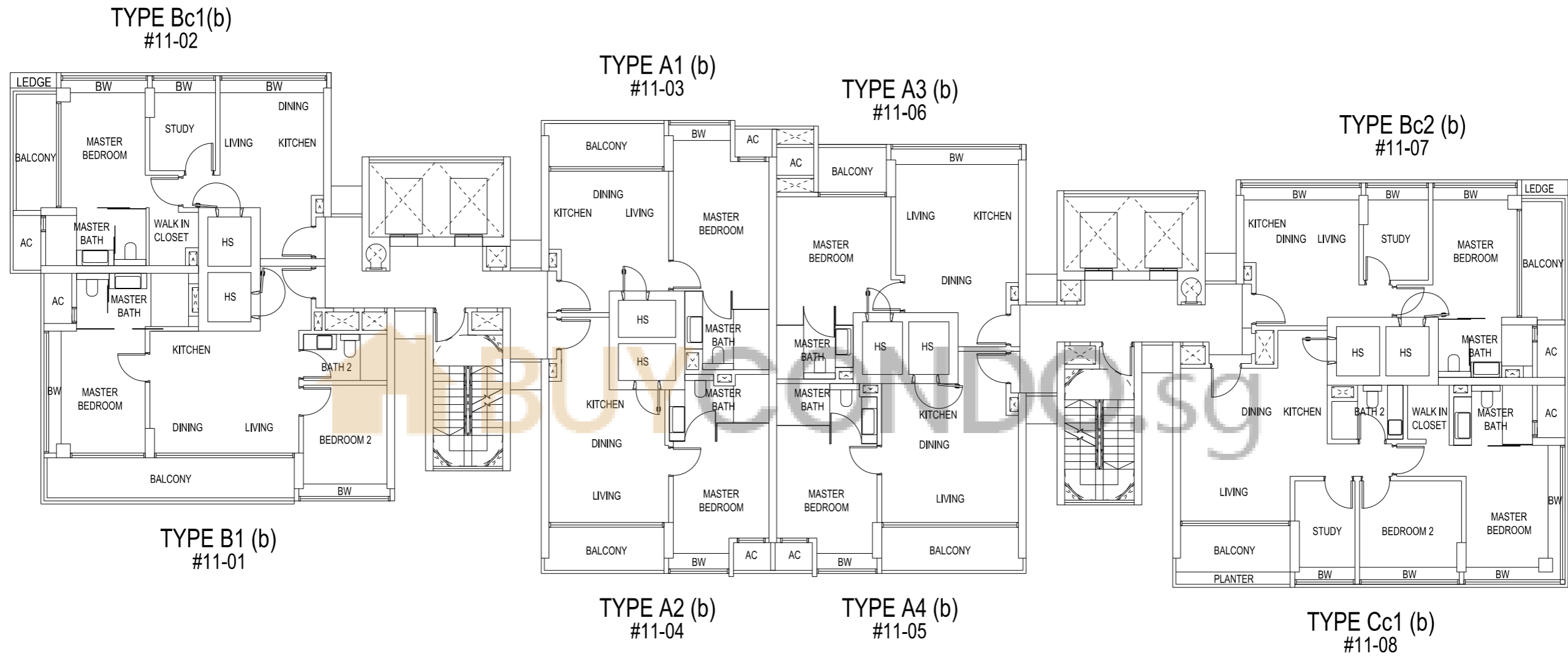


KEY PLAN

The key plan is not to scale.

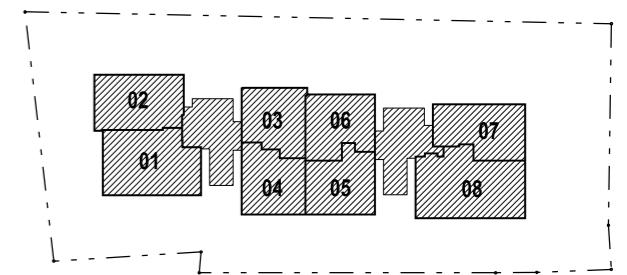


# The Cape



## 11TH TYPICAL STOREY PLAN

25 AMBER ROAD



KEY PLAN

The key plan is not to scale.

Disclaimer: The above plans are subject to change as may be approved by the relevant authorities