

1 BEDROOM - LOFT



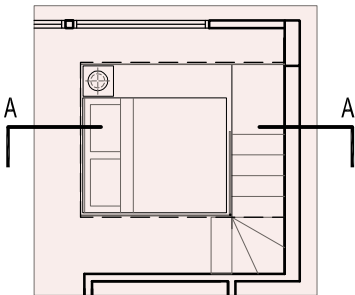
TYPE A3(P)

#01 – 12

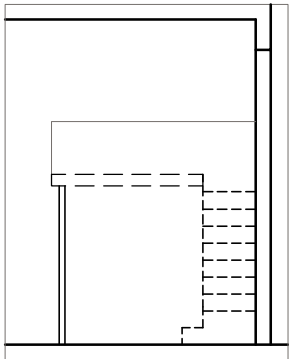
Mirror Image

#01 – 05, #01 – 17

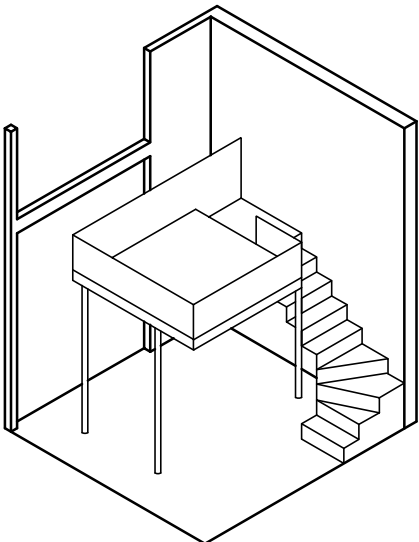
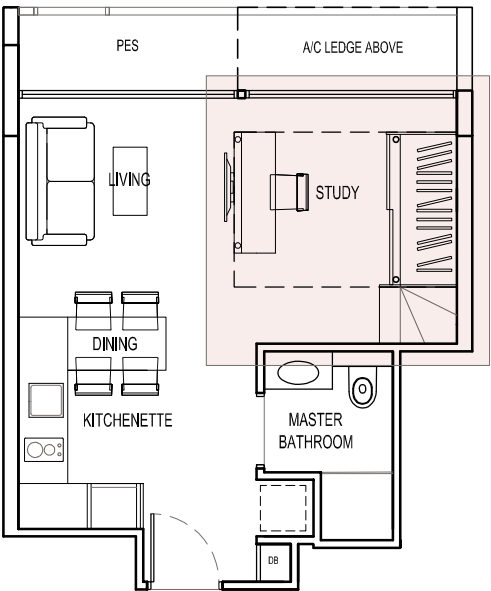
41 sq m / 441 sq ft



Loft Platform

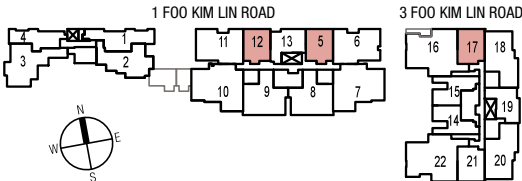


Section A-A
Floor to Floor Height - 4.5m



Isometric of Loft Platform

The plans are subject to change as may be required or approved by the relevant authorities.
These are not drawn to scale and are for the purpose of visual presentation of the different
layouts that are available. Area are estimates only and are subject to final survey.



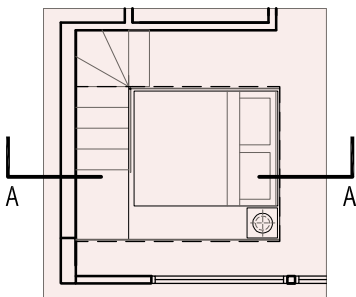
1 BEDROOM - LOFT



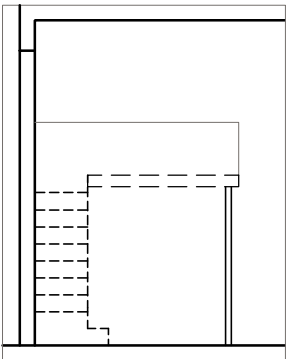
TYPE A3(P1)

#01 – 21

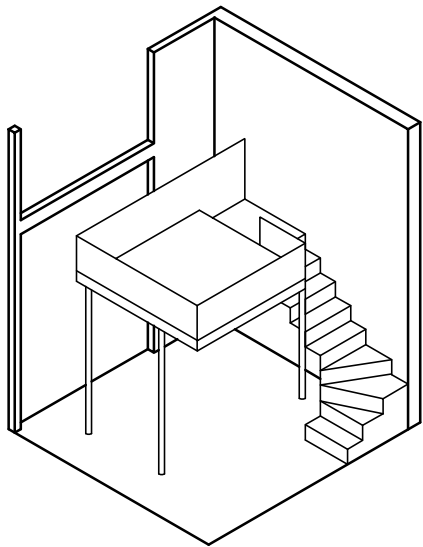
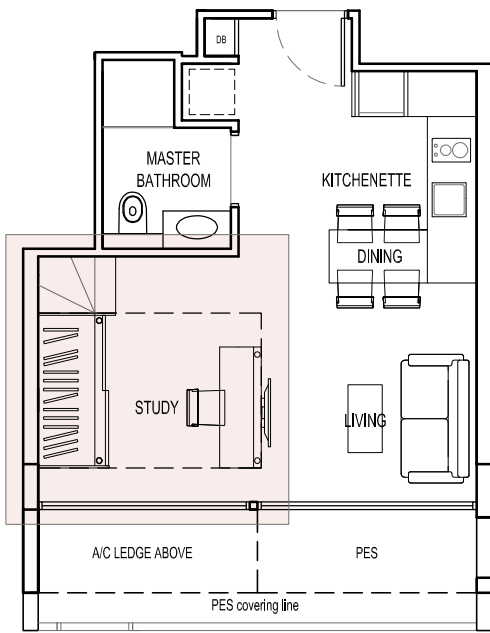
44 sq m / 474 sq ft



Loft Platform



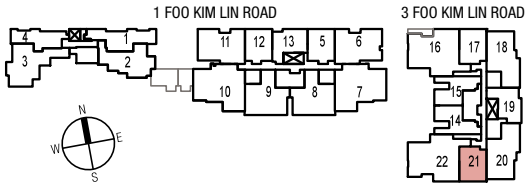
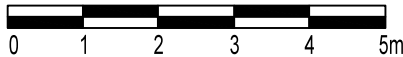
Section A-A
Floor to Floor Height - 4.5m



Isometric of Loft Platform

The plans are subject to change as may be required or approved by the relevant authorities.
These are not drawn to scale and are for the purpose of visual presentation of the different
layouts that are available. Area are estimates only and are subject to final survey.

SCALE



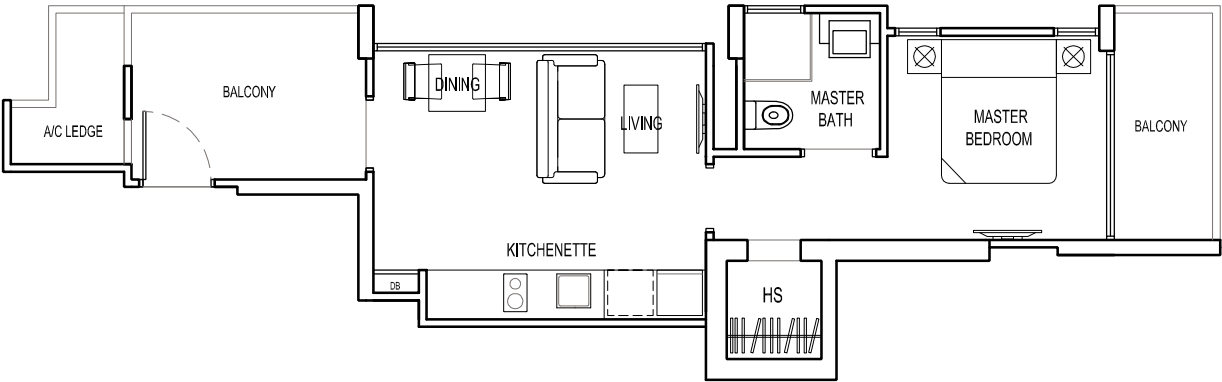
1 BEDROOM



TYPE A1

#02 – 01, #03 – 01, #04 – 01

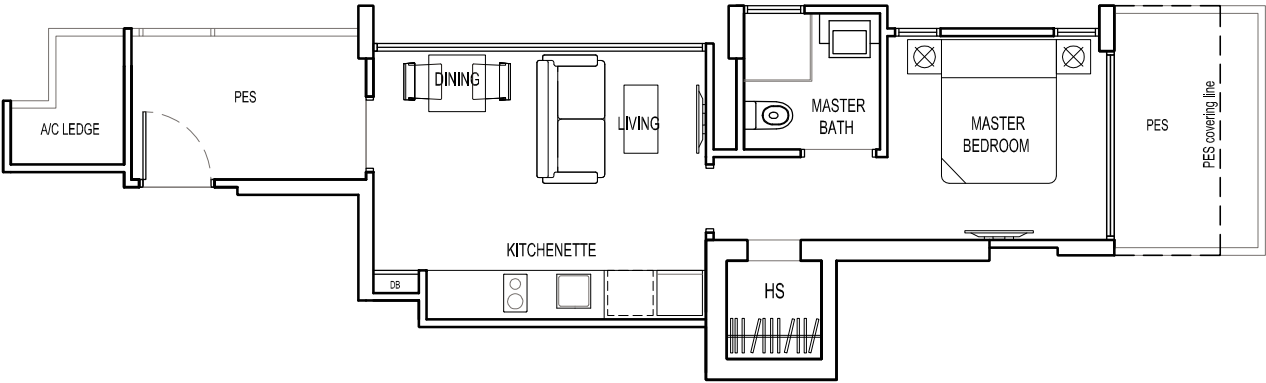
49 sq m / 527 sq ft



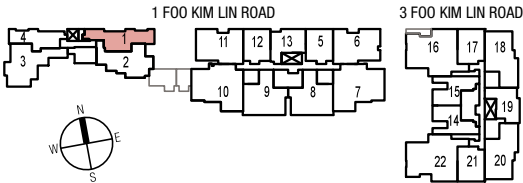
TYPE A1(P)

#01 – 01

49 sq m / 527 sq ft



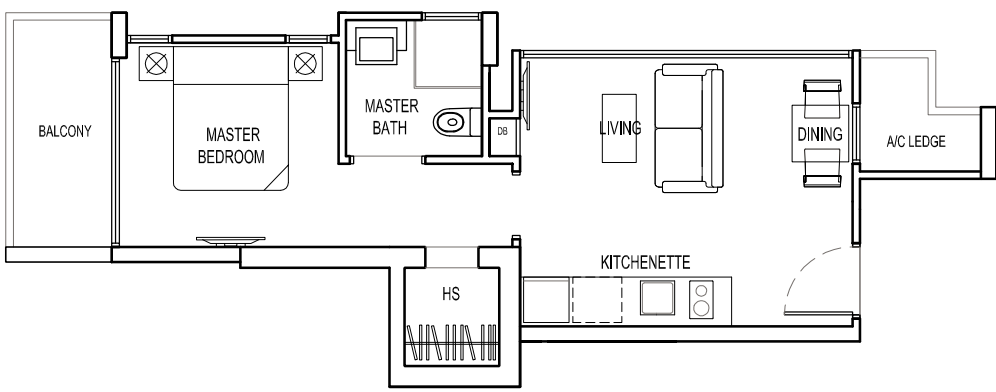
The plans are subject to change as may be required or approved by the relevant authorities.
These are not drawn to scale and are for the purpose of visual presentation of the different
layouts that are available. Area estimates only and are subject to final survey.



1 BEDROOM

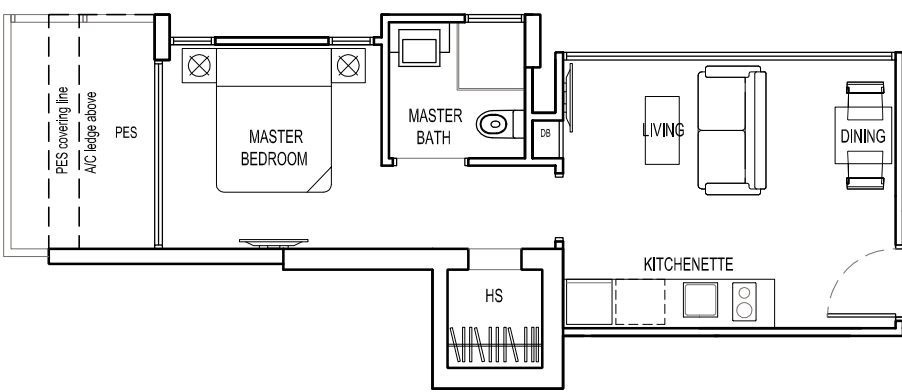
TYPE A2

#02 – 04, #03 – 04, #04 – 04
41 sq m / 441 sq ft

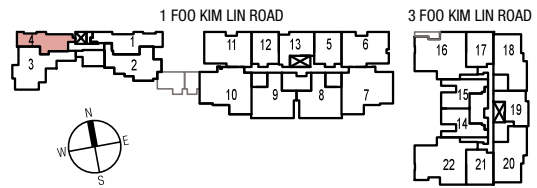
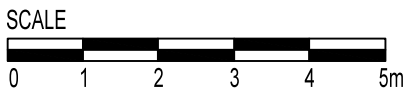


TYPE A2(P)

#01 – 04
41 sq m / 441 sq ft



The plans are subject to change as may be required or approved by the relevant authorities.
These are not drawn to scale and are for the purpose of visual presentation of the different
layouts that are available. Area are estimates only and are subject to final survey.



1 BEDROOM



TYPE A3

#02 – 12, #03 – 12, #04 – 12

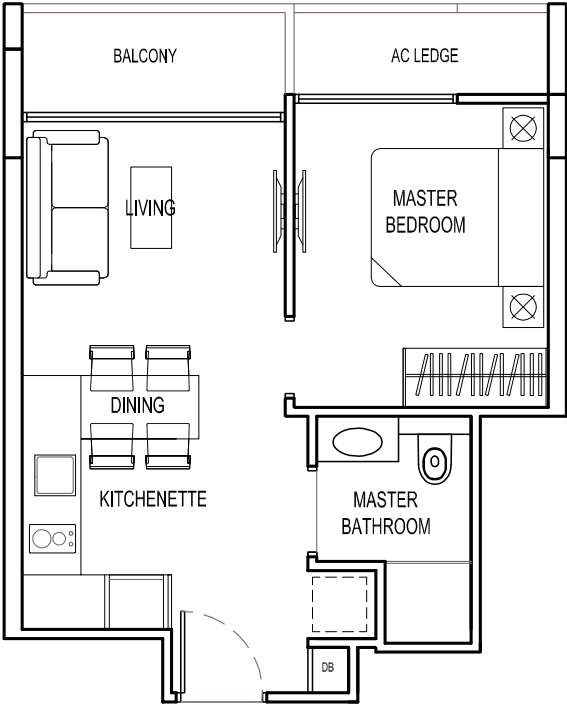
Mirror Image

#02 – 05, #03 – 05, #04 – 05

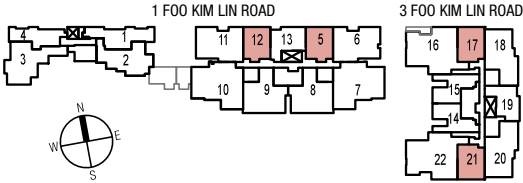
#02 – 17, #03 – 17, #04 – 17

#02 – 21, #03 – 21, #04 – 21

41 sq m / 441 sq ft



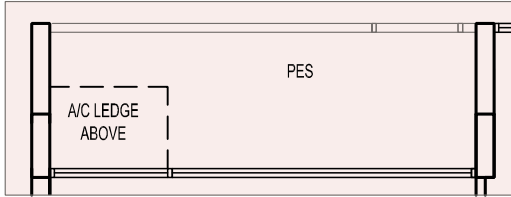
*The plans are subject to change as may be required or approved by the relevant authorities.
These are not drawn to scale and are for the purpose of visual presentation of the different
layouts that are available. Area are estimates only and are subject to final survey.*



1 BEDROOM

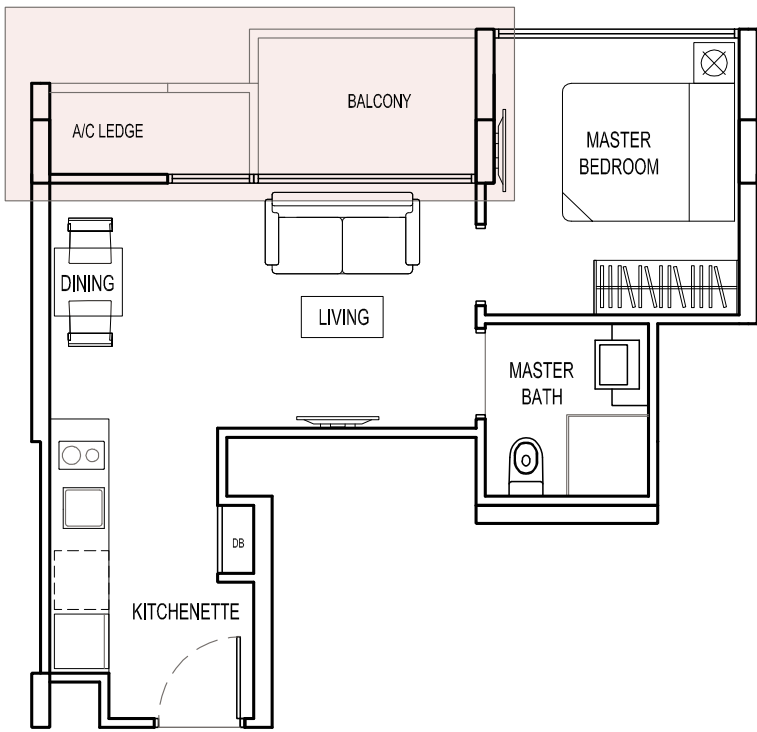
TYPE A4(P)

#01 – 13, #01 – 19
42 sq m / 452 sq ft



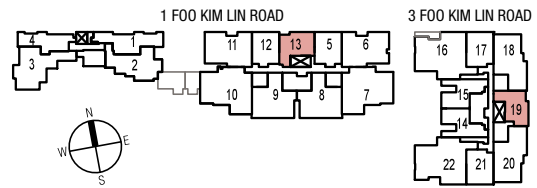
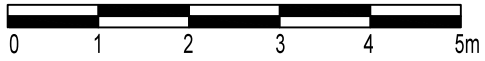
TYPE A4

#02 – 13, #03 – 13, #04 – 13
#02 – 19, #03 – 19, #04 – 19
40 sq m / 431 sq ft



The plans are subject to change as may be required or approved by the relevant authorities.
These are not drawn to scale and are for the purpose of visual presentation of the different
layouts that are available. Area are estimates only and are subject to final survey.

SCALE



1 BEDROOM

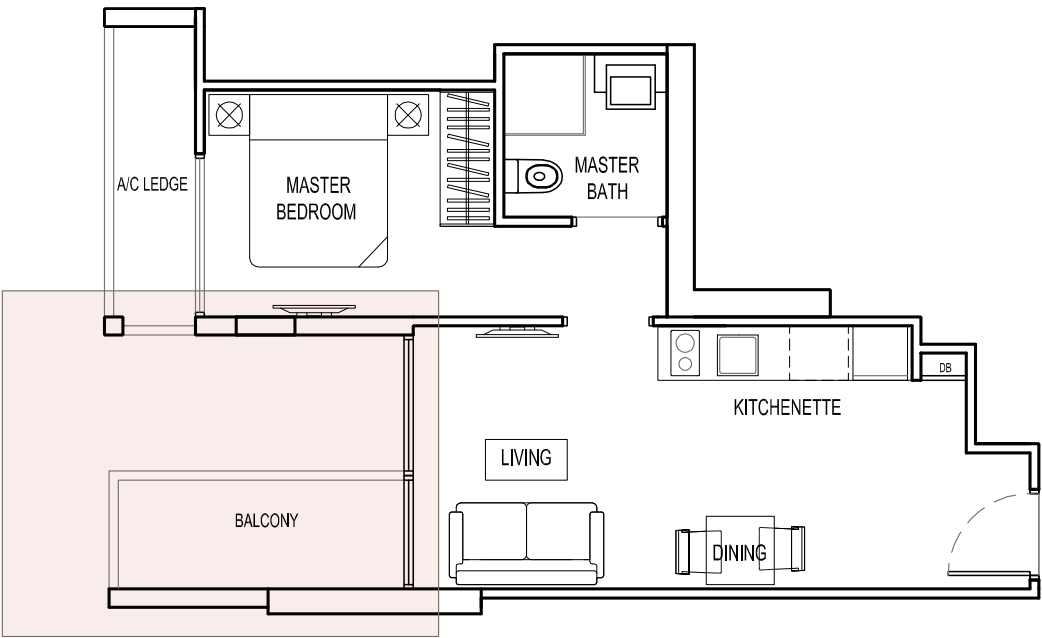
TYPE A5

#02 – 14, #03 – 14, #04 – 14

Mirror Image

#02 – 15, #03 – 15, #04 – 15

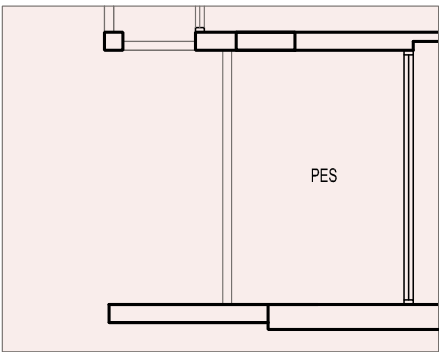
43 sq m / 463 sq ft



TYPE A5(P)

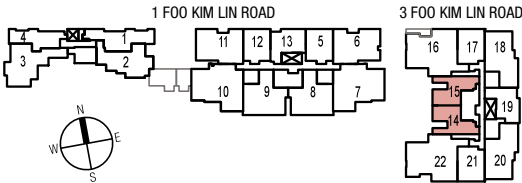
#01 – 14

44 sq m / 474 sq ft



*The plans are subject to change as may be required or approved by the relevant authorities.
These are not drawn to scale and are for the purpose of visual presentation of the different
layouts that are available. Area are estimates only and are subject to final survey.*

SCALE

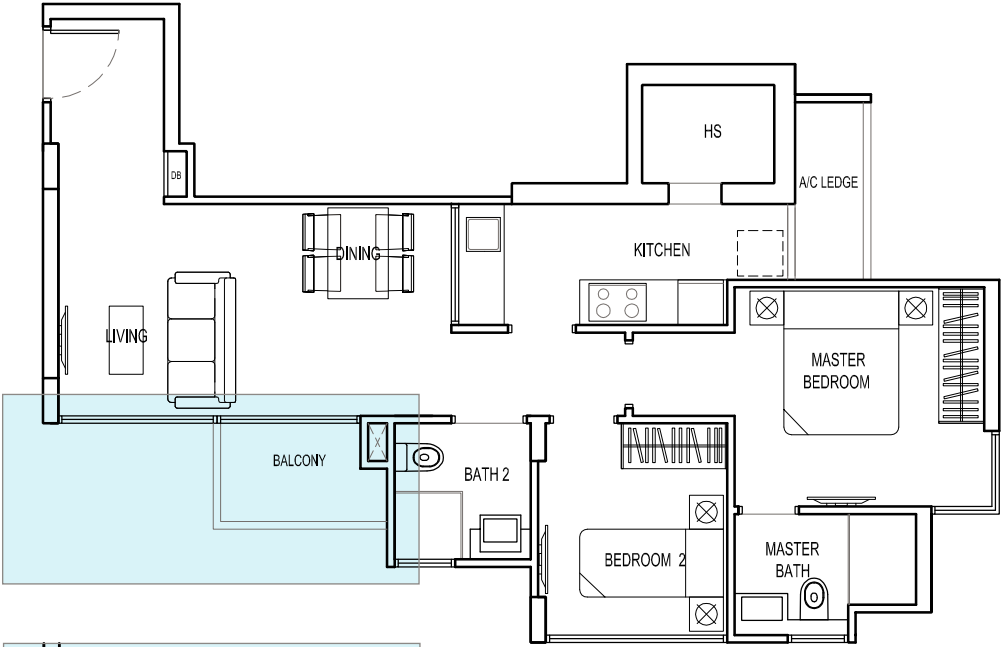


2 BEDROOM



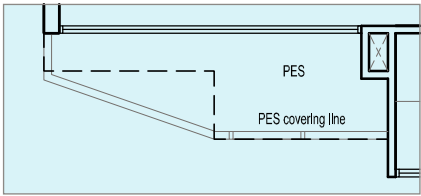
TYPE B1

#03 – 02, #04 – 02
66 sq m / 710 sq ft



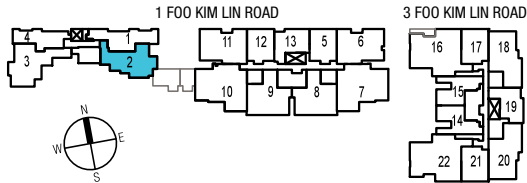
TYPE B1(P)

#01 – 02
68 sq m / 732 sq ft



The plans are subject to change as may be required or approved by the relevant authorities.
These are not drawn to scale and are for the purpose of visual presentation of the different
layouts that are available. Area are estimates only and are subject to final survey.

SCALE

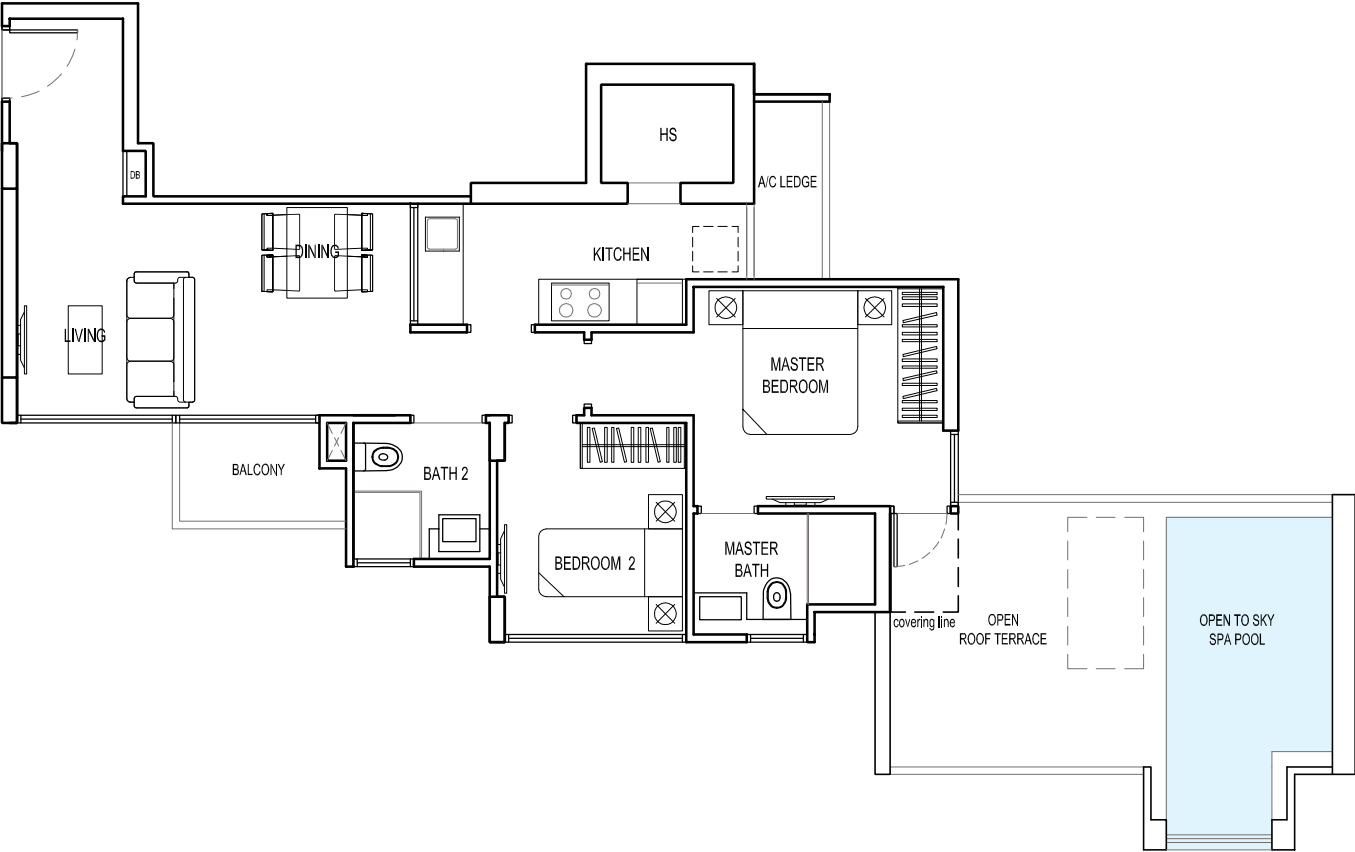


2 BEDROOM

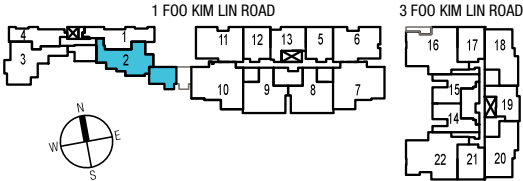
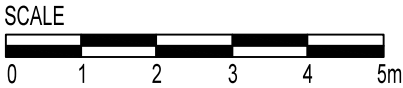


TYPE B1(PP)

#02 – 02
90 sq m / 969 sq ft



The plans are subject to change as may be required or approved by the relevant authorities.
These are not drawn to scale and are for the purpose of visual presentation of the different
layouts that are available. Area are estimates only and are subject to final survey.

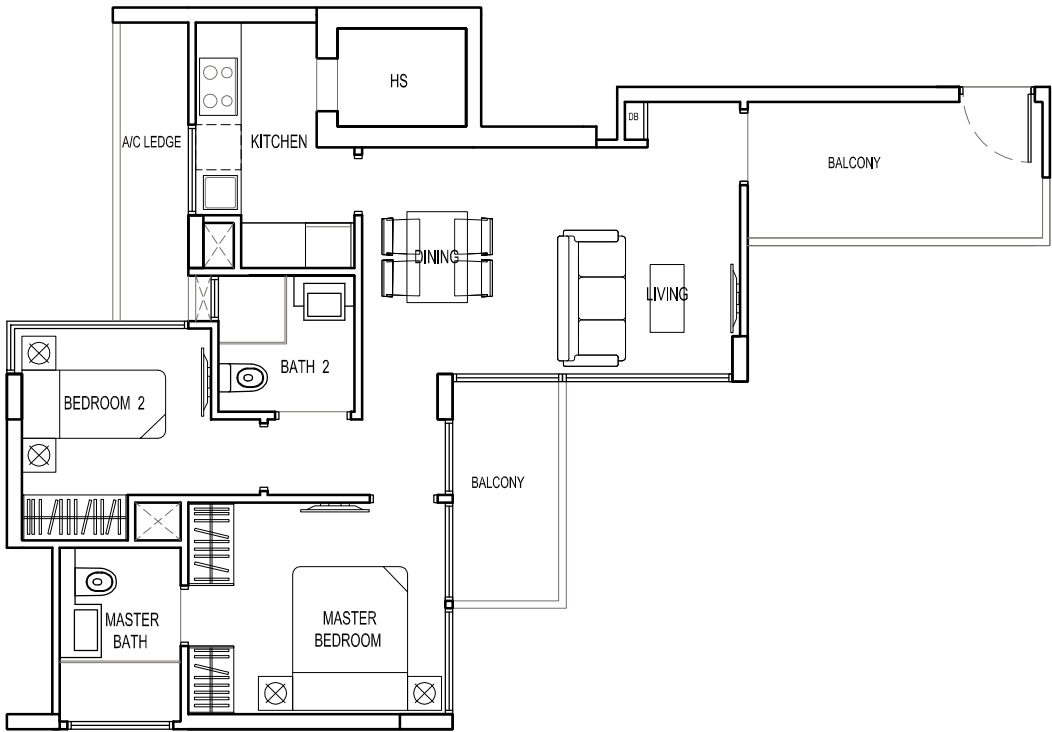


2 BEDROOM

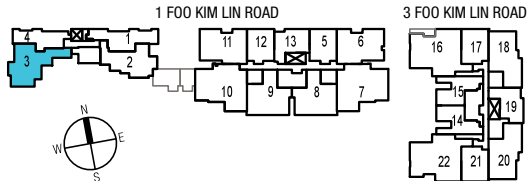
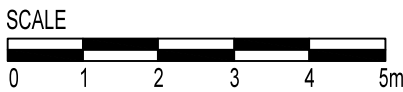


TYPE B2

#02 – 03, #03 – 03, #04 – 03
72 sq m / 775 sq ft



The plans are subject to change as may be required or approved by the relevant authorities.
These are not drawn to scale and are for the purpose of visual presentation of the different
layouts that are available. Area are estimates only and are subject to final survey.



2 BEDROOM



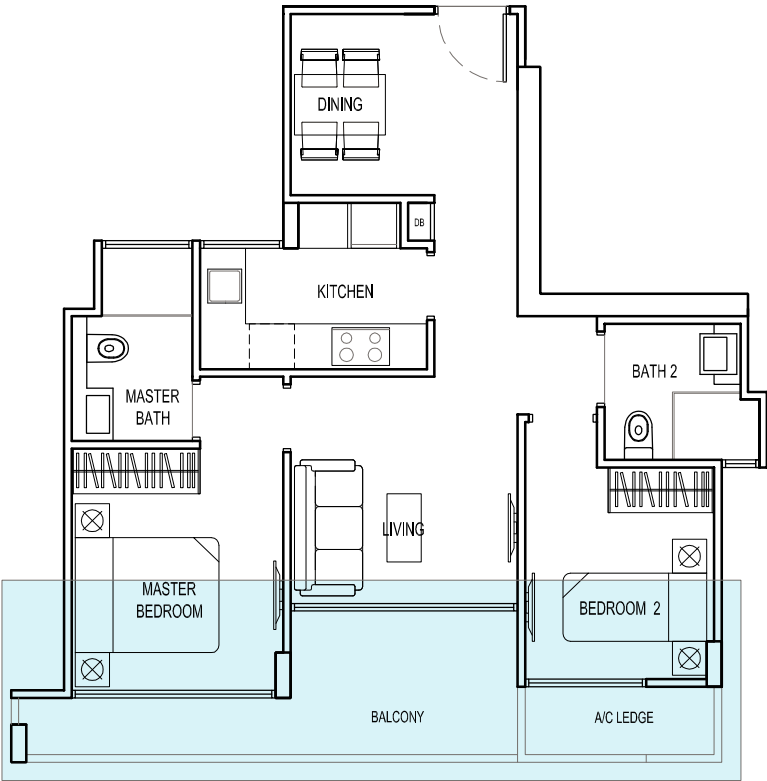
TYPE B3

#02 – 09, #03 – 09, #04 – 09

Mirror Image

#02 – 08, #03 – 08, #04 – 08

68 sq m / 732 sq ft

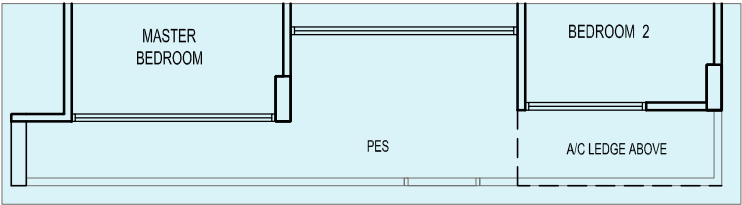


TYPE B3(P)

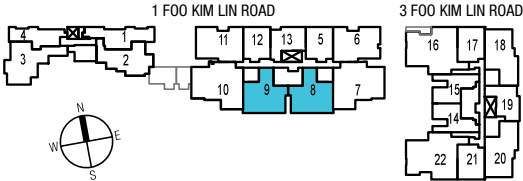
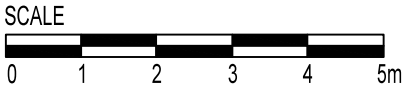
Mirror Image

#01 – 08

68 sq m / 732 sq ft



The plans are subject to change as may be required or approved by the relevant authorities. These are not drawn to scale and are for the purpose of visual presentation of the different layouts that are available. Area are estimates only and are subject to final survey.



2 BEDROOM

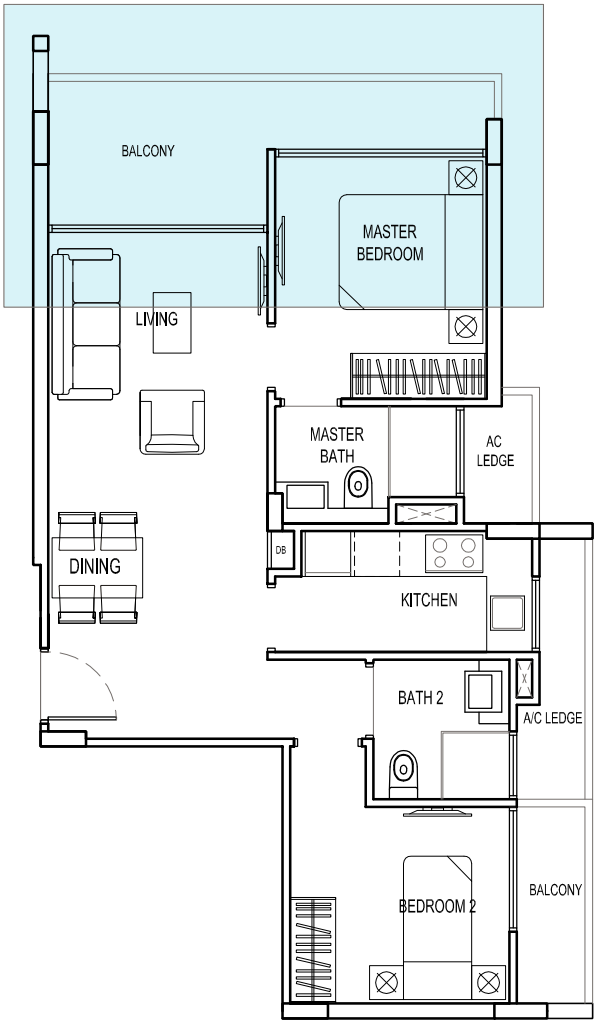
TYPE B4

#02 – 18, #03 – 18, #04 – 18

Mirror Image

#02 – 20, #03 – 20, #04 – 20

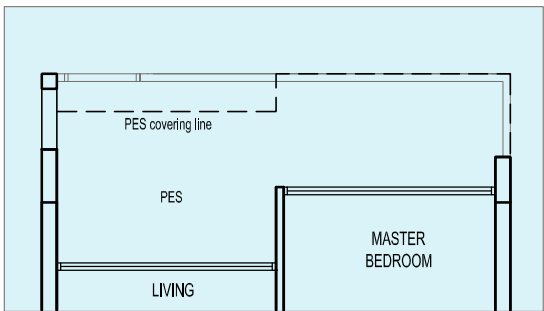
71 sq m / 764 sq ft



TYPE B4(P1)

#01 – 18

74 sq m / 797 sq ft

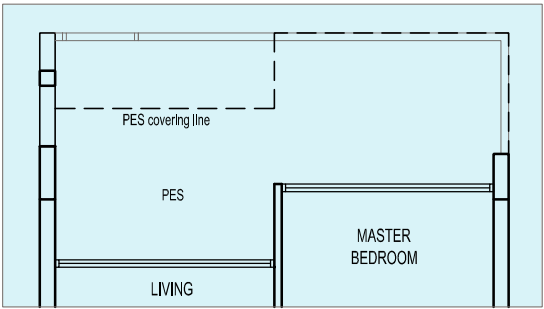


TYPE B4(P)

Mirror Image

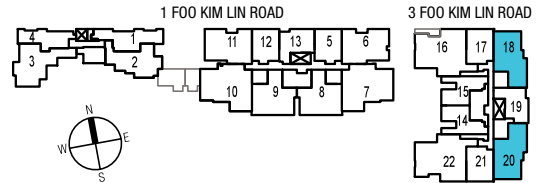
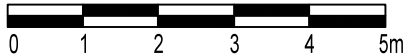
#01 – 20

78 sq m / 840 sq ft



The plans are subject to change as may be required or approved by the relevant authorities.
These are not drawn to scale and are for the purpose of visual presentation of the different
layouts that are available. Area are estimates only and are subject to final survey.

SCALE



2 BEDROOM + STUDY

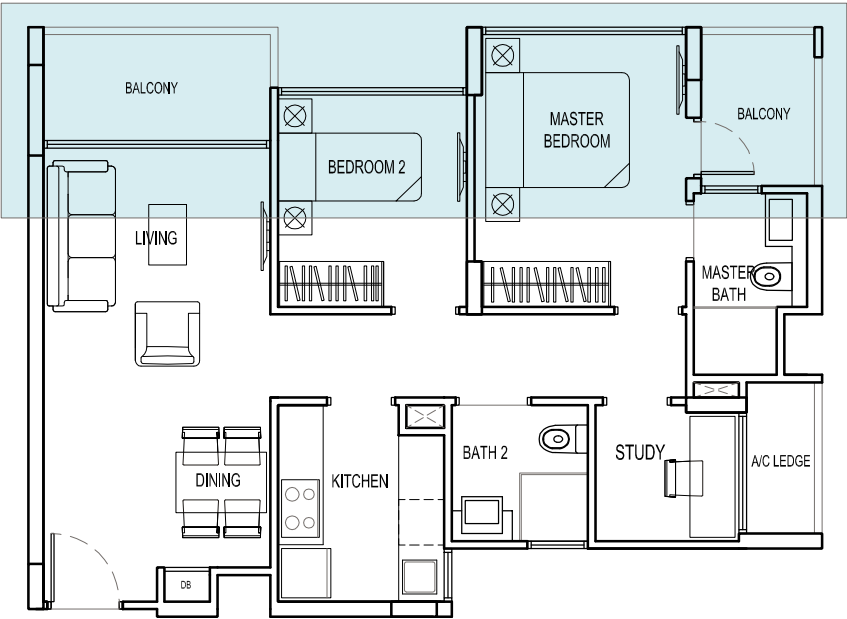


TYPE BS

#02 – 06, #03 – 06, #04 – 06

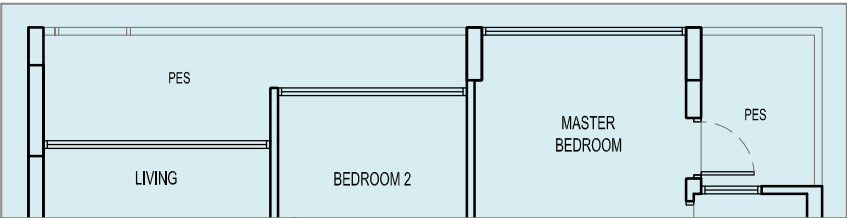
Mirror Image

#02 – 11, #03 – 11, #04 – 11
72 sq m / 775 sq ft

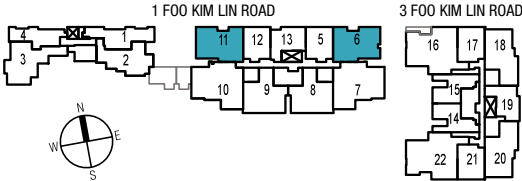
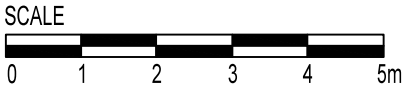


TYPE BS(P)

#01 – 06
74 sq m / 797 sq ft



The plans are subject to change as may be required or approved by the relevant authorities.
These are not drawn to scale and are for the purpose of visual presentation of the different
layouts that are available. Area are estimates only and are subject to final survey.



3 BEDROOM

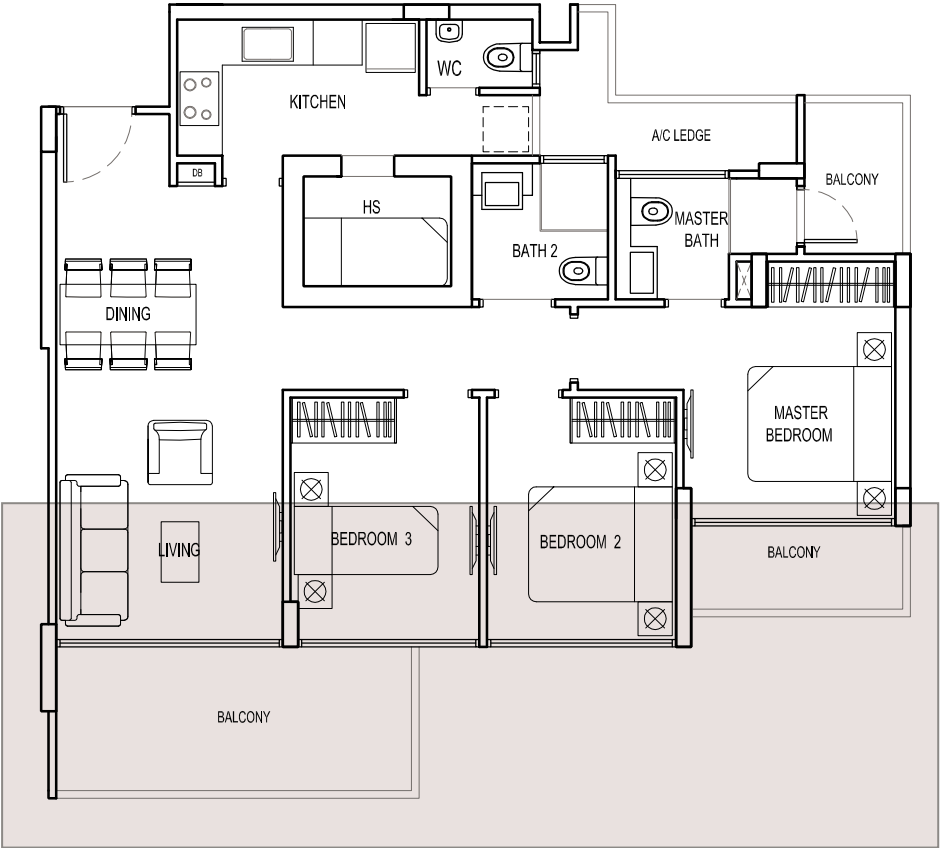
TYPE C1

#03 – 07, #04 – 07

Mirror Image

#03 – 10, #04 – 10

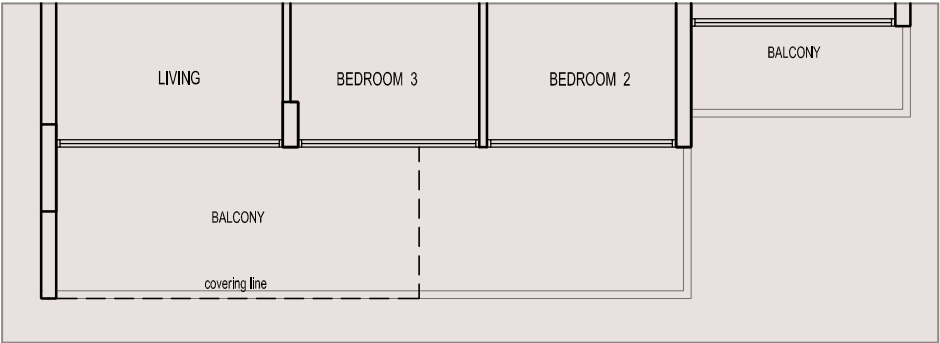
96 sq m / 1,033 sq ft



TYPE C4

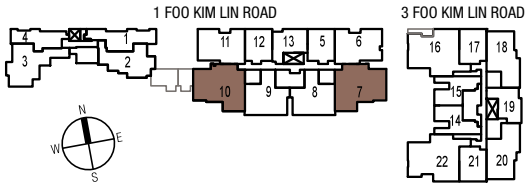
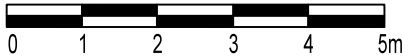
#02 – 07

103 sq m / 1,109 sq ft



The plans are subject to change as may be required or approved by the relevant authorities.
These are not drawn to scale and are for the purpose of visual presentation of the different
layouts that are available. Area are estimates only and are subject to final survey.

SCALE

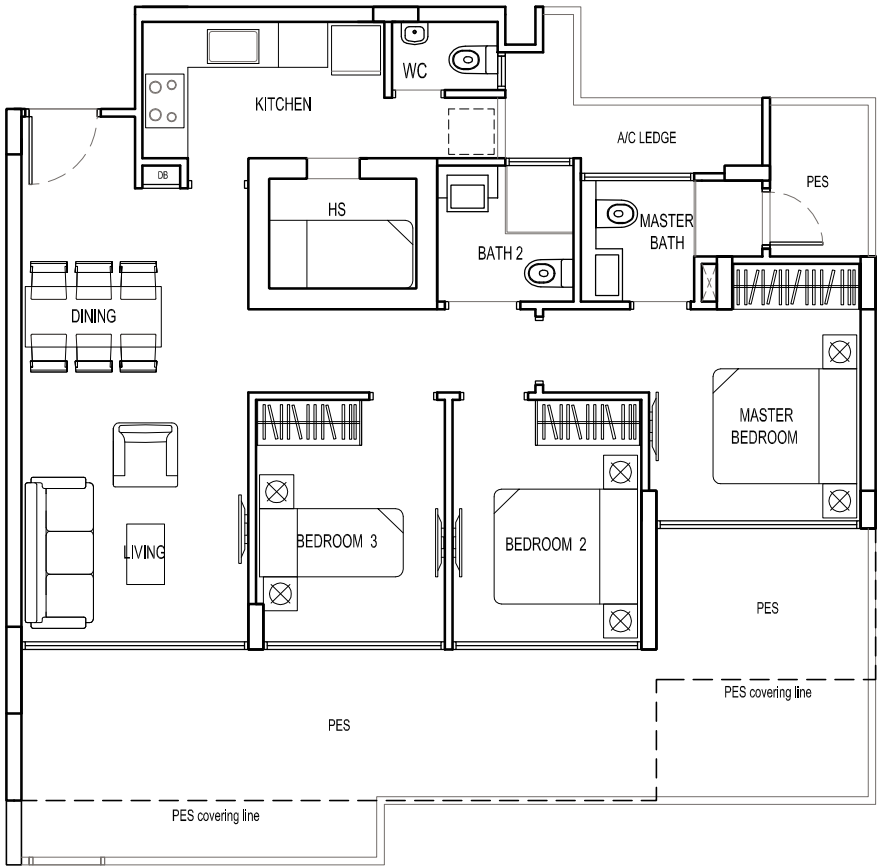


3 BEDROOM

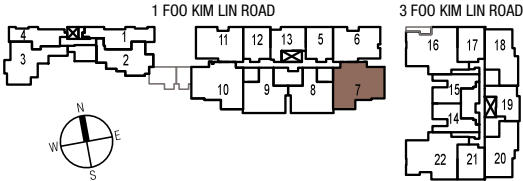
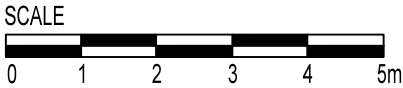


TYPE C1(P)

#01 – 07
115 sq m / 1,238 sq ft



The plans are subject to change as may be required or approved by the relevant authorities.
These are not drawn to scale and are for the purpose of visual presentation of the different
layouts that are available. Area are estimates only and are subject to final survey.



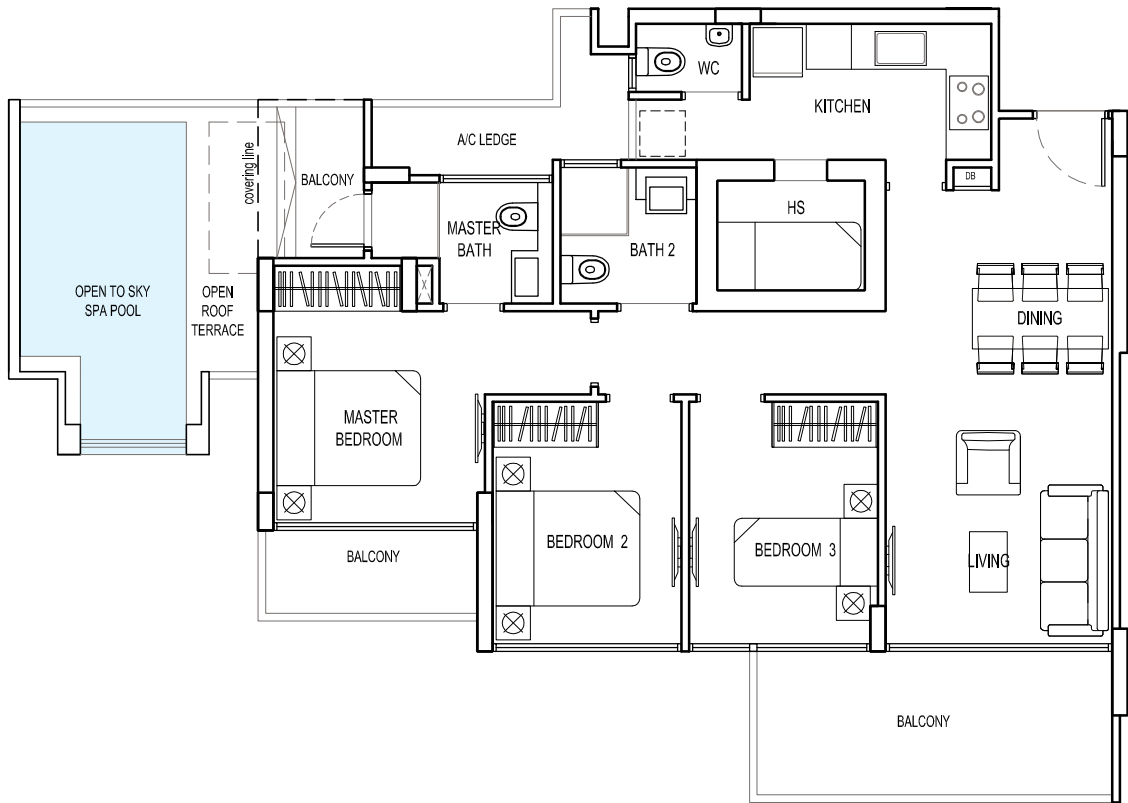
3 BEDROOM



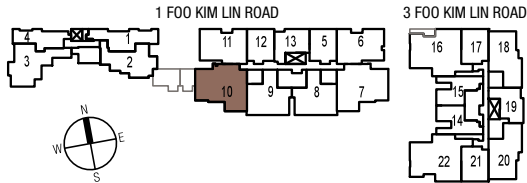
TYPE C1(PP)

#02 – 10

110 sq m / 1,184 sq ft



The plans are subject to change as may be required or approved by the relevant authorities. These are not drawn to scale and are for the purpose of visual presentation of the different layouts that are available. Area are estimates only and are subject to final survey.

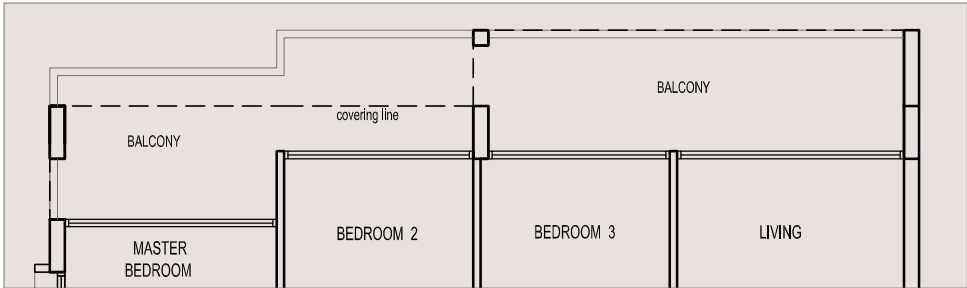


3 BEDROOM



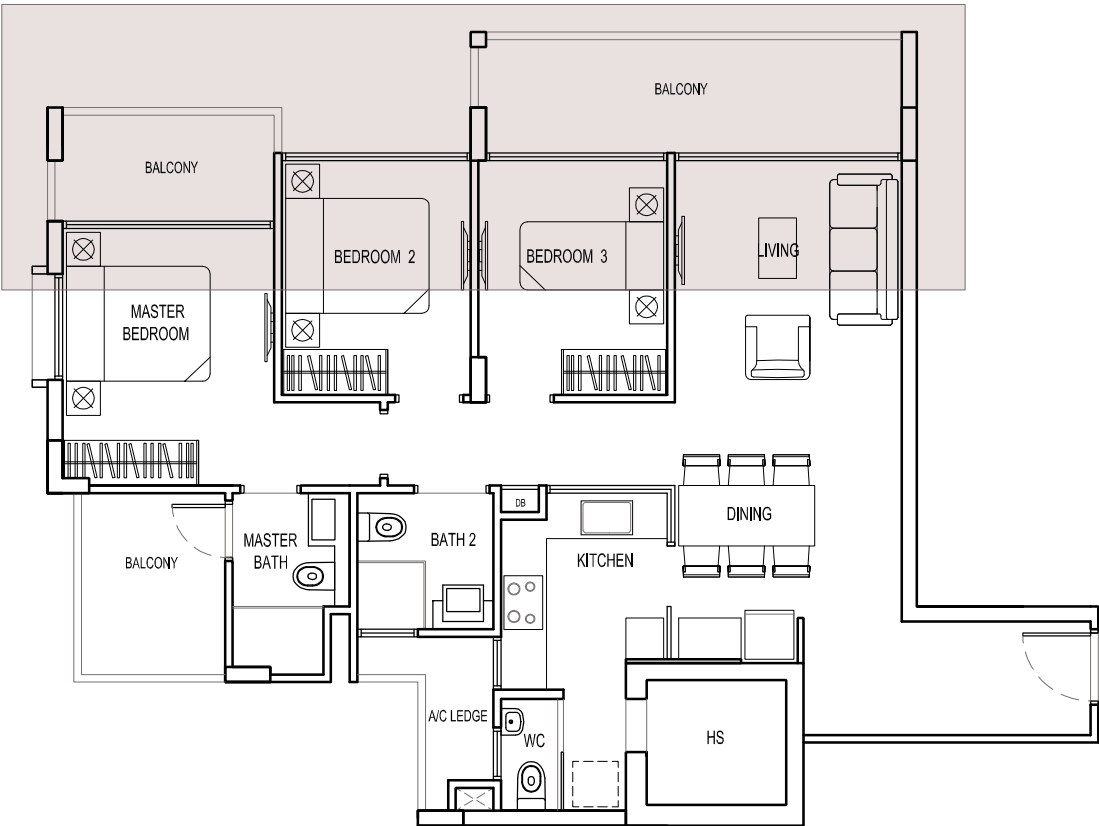
TYPE C3

#02 – 16
107 sq m / 1,152 sq ft

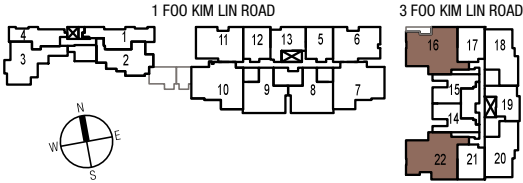


TYPE C2

#03 – 16, #04 – 16
Mirror Image
#02 – 22, #03 – 22, #04 – 22
102 sq m / 1,098 sq ft



The plans are subject to change as may be required or approved by the relevant authorities.
These are not drawn to scale and are for the purpose of visual presentation of the different
layouts that are available. Area are estimates only and are subject to final survey.



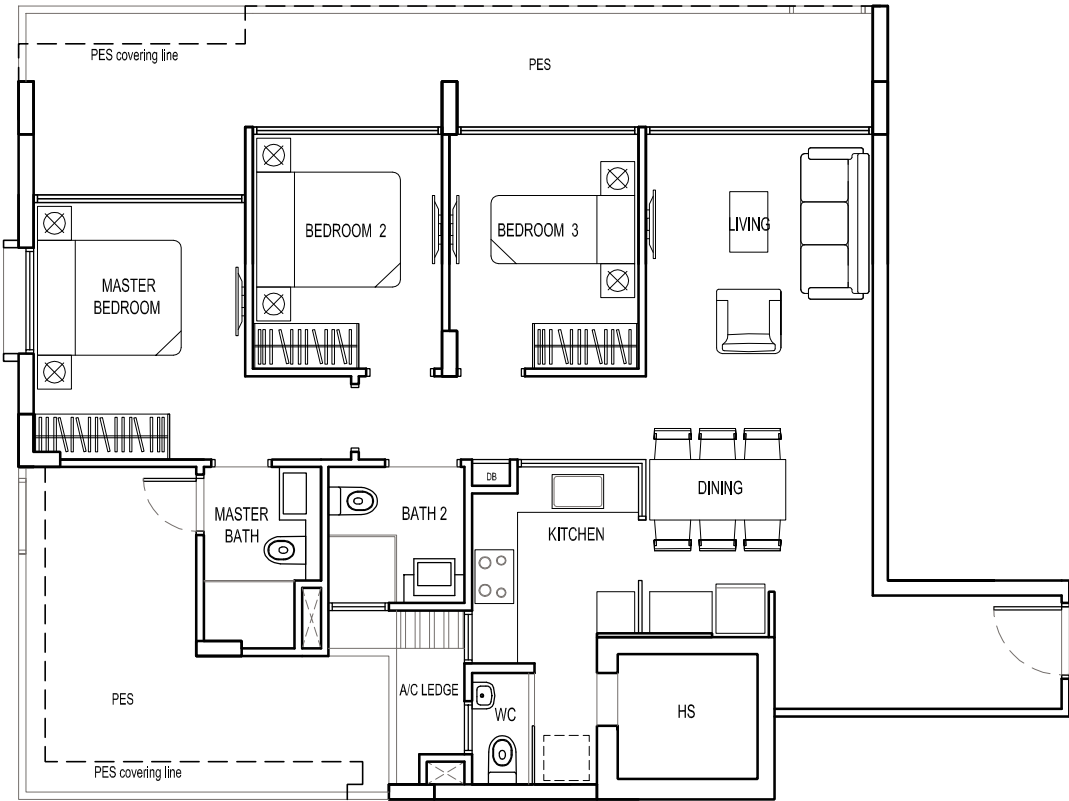
3 BEDROOM



TYPE C2(P)

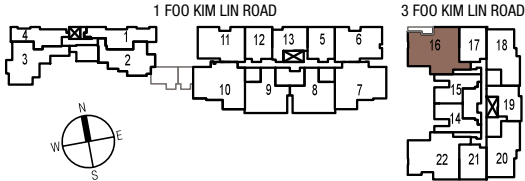
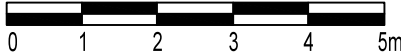
#01 – 16

119 sq m / 1,281 sq ft



The plans are subject to change as may be required or approved by the relevant authorities. These are not drawn to scale and are for the purpose of visual presentation of the different layouts that are available. Area are estimates only and are subject to final survey.

SCALE

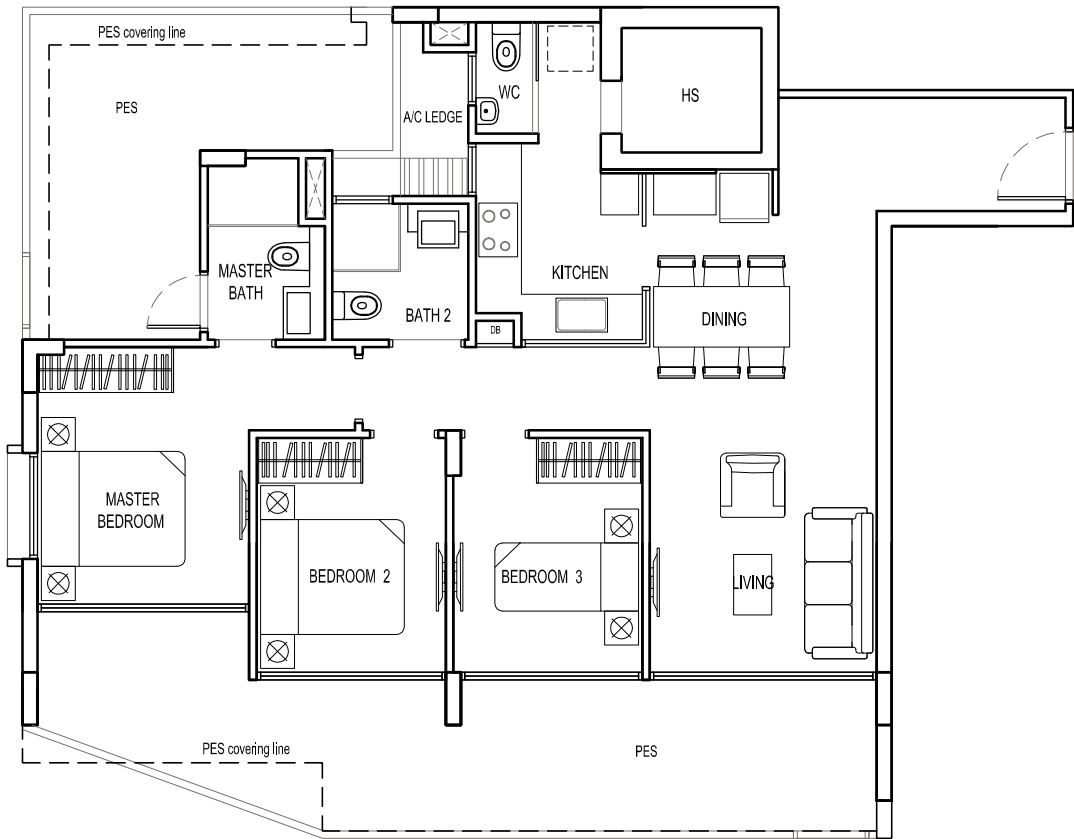


3 BEDROOM

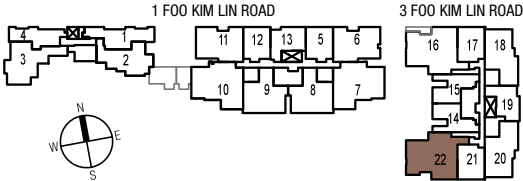
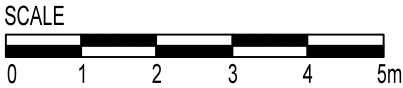


TYPE C2(P1)

#01 – 22
122 sq m / 1,313 sq ft



The plans are subject to change as may be required or approved by the relevant authorities.
These are not drawn to scale and are for the purpose of visual presentation of the different
layouts that are available. Area estimates only and are subject to final survey.



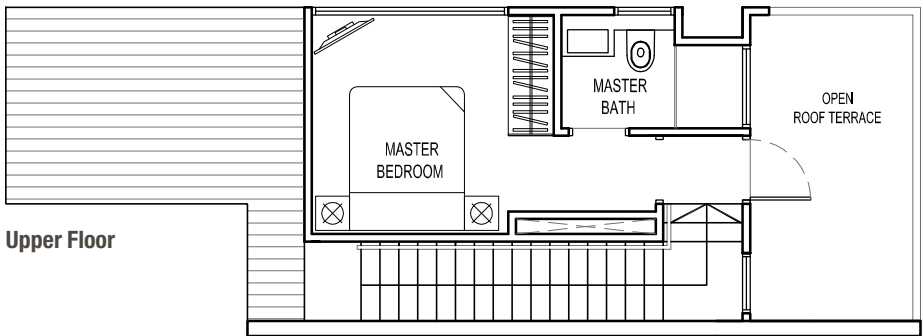
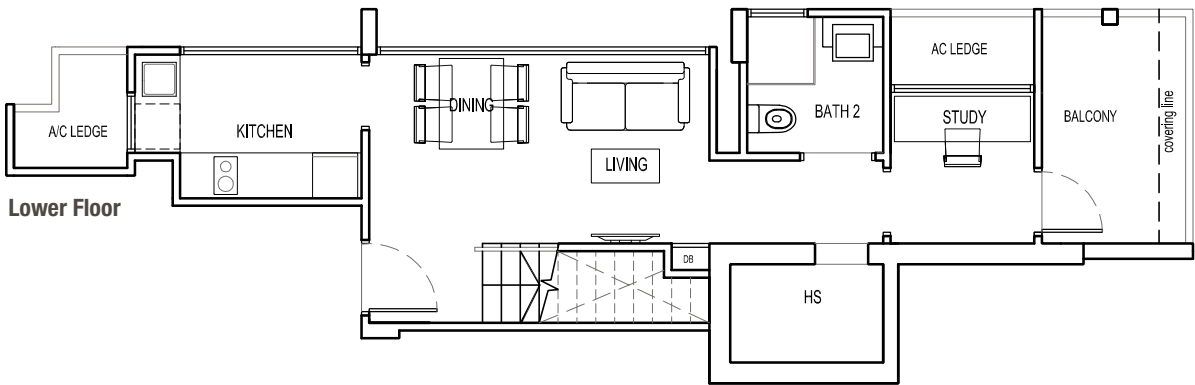
PENTHOUSE (1 BEDROOM + STUDY)



TYPE PH1

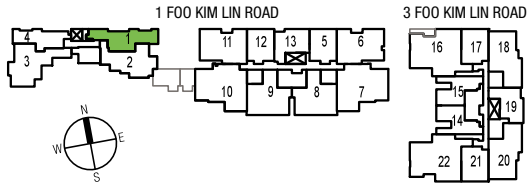
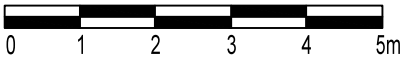
#05 – 01

80 sq m / 861 sq ft



The plans are subject to change as may be required or approved by the relevant authorities. These are not drawn to scale and are for the purpose of visual presentation of the different layouts that are available. Area are estimates only and are subject to final survey.

SCALE

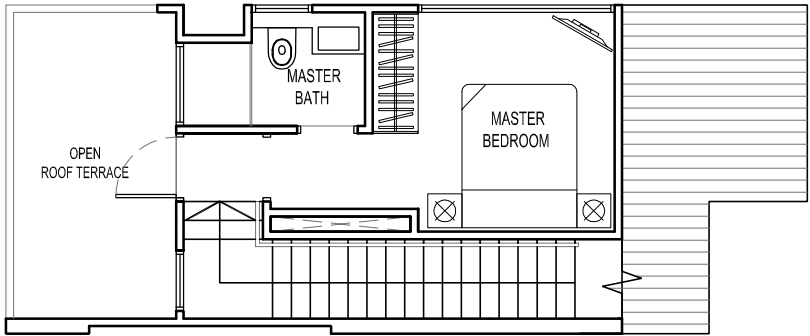
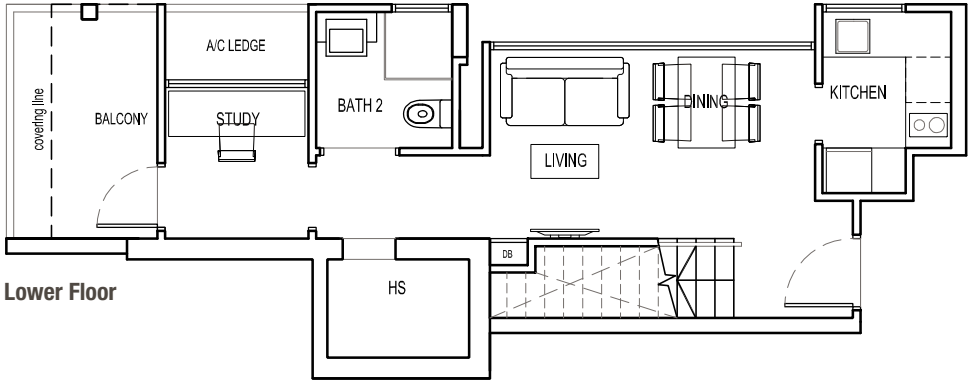


PENTHOUSE (1 BEDROOM + STUDY)

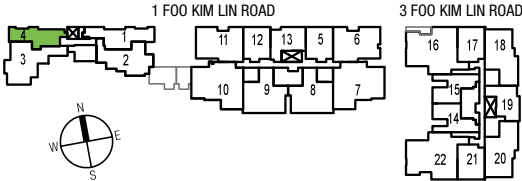
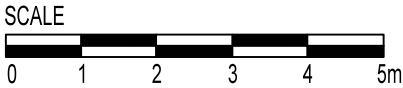


TYPE PH2

#05 – 04
76 sq m / 818 sq ft



The plans are subject to change as may be required or approved by the relevant authorities.
These are not drawn to scale and are for the purpose of visual presentation of the different
layouts that are available. Area are estimates only and are subject to final survey.



PENTHOUSE (1 BEDROOM + STUDY)



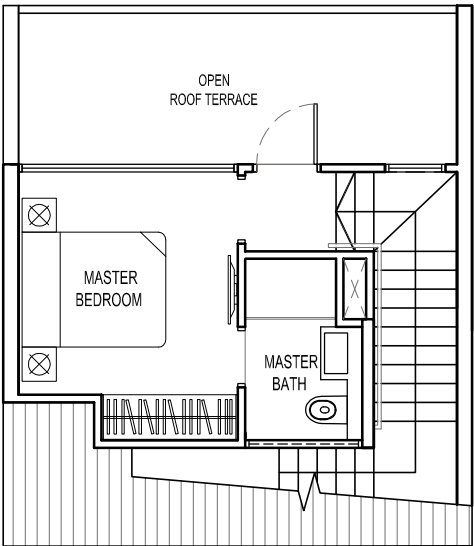
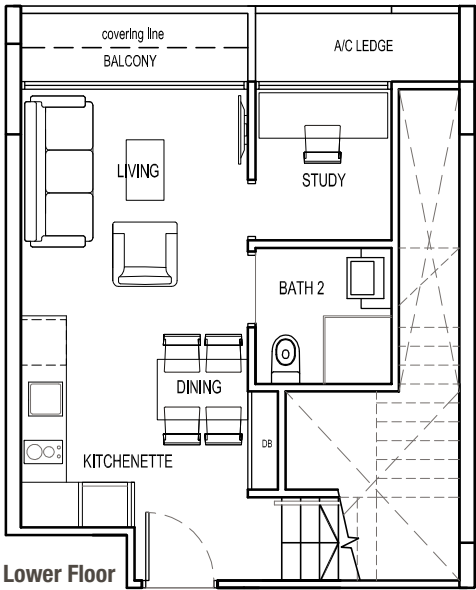
TYPE PH3

#05 – 12

Mirror Image

#05 – 05, #05 – 17, #05 – 21

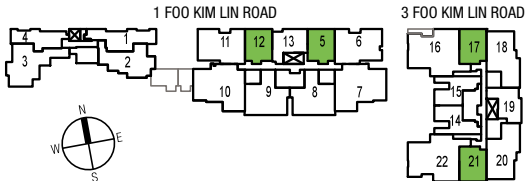
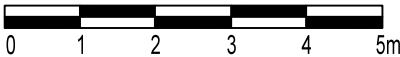
78 sq m / 840 sq ft



Upper Floor

The plans are subject to change as may be required or approved by the relevant authorities.
These are not drawn to scale and are for the purpose of visual presentation of the different
layouts that are available. Area are estimates only and are subject to final survey.

SCALE

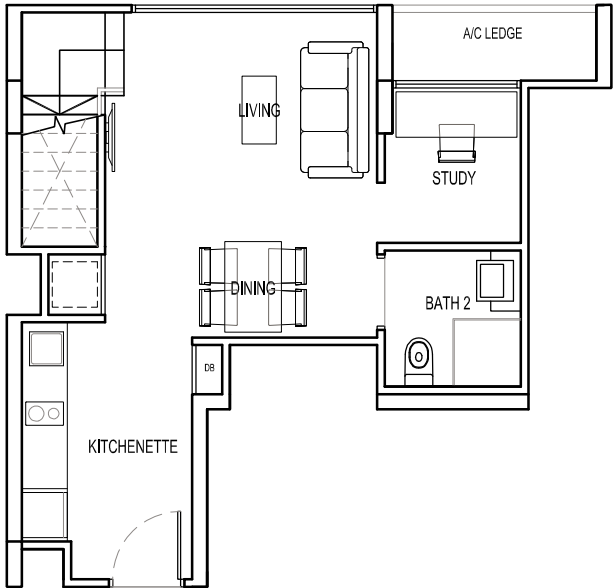


PENTHOUSE (1 BEDROOM + STUDY)

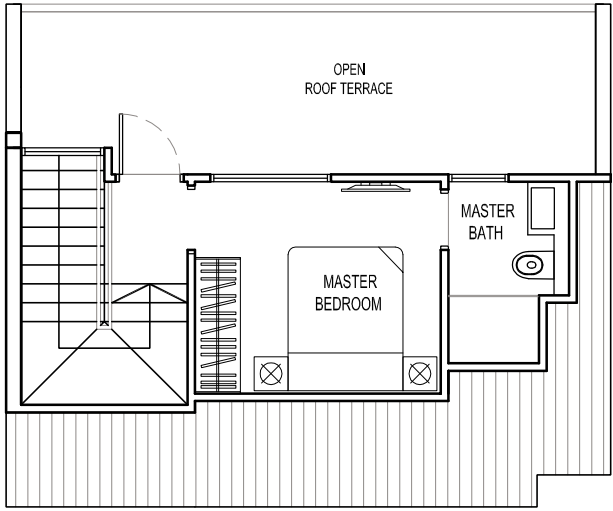


TYPE PH4

#05 – 13, #05 – 19
78 sq m / 840 sq ft

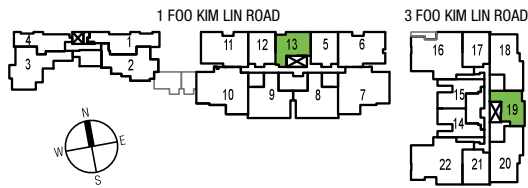


Lower Floor



Upper Floor

The plans are subject to change as may be required or approved by the relevant authorities.
These are not drawn to scale and are for the purpose of visual presentation of the different
layouts that are available. Area are estimates only and are subject to final survey.



PENTHOUSE (1 BEDROOM + STUDY)



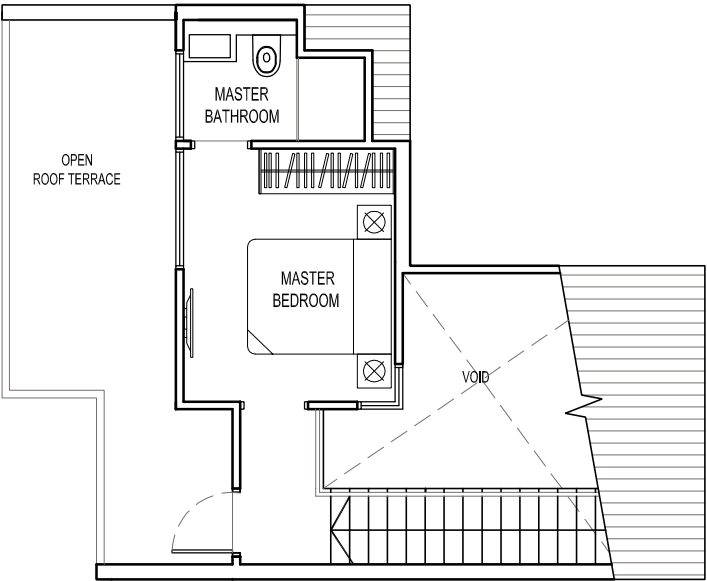
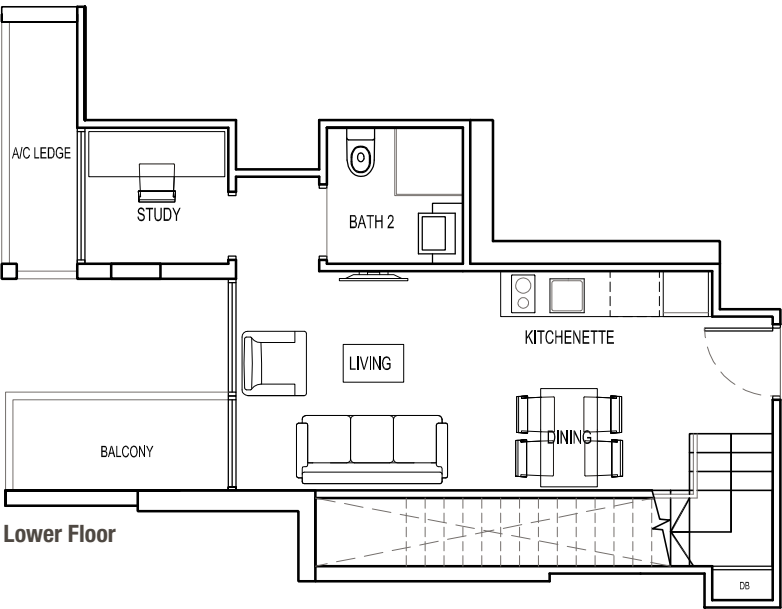
TYPE PH5

#05 – 14

Mirror Image

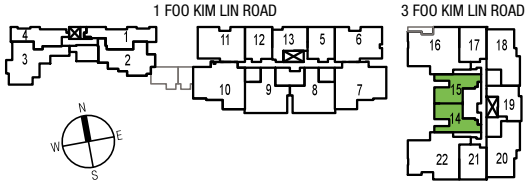
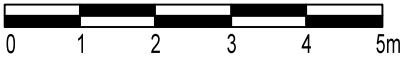
#05 – 15

90 sq m / 969 sq ft



The plans are subject to change as may be required or approved by the relevant authorities. These are not drawn to scale and are for the purpose of visual presentation of the different layouts that are available. Area are estimates only and are subject to final survey.

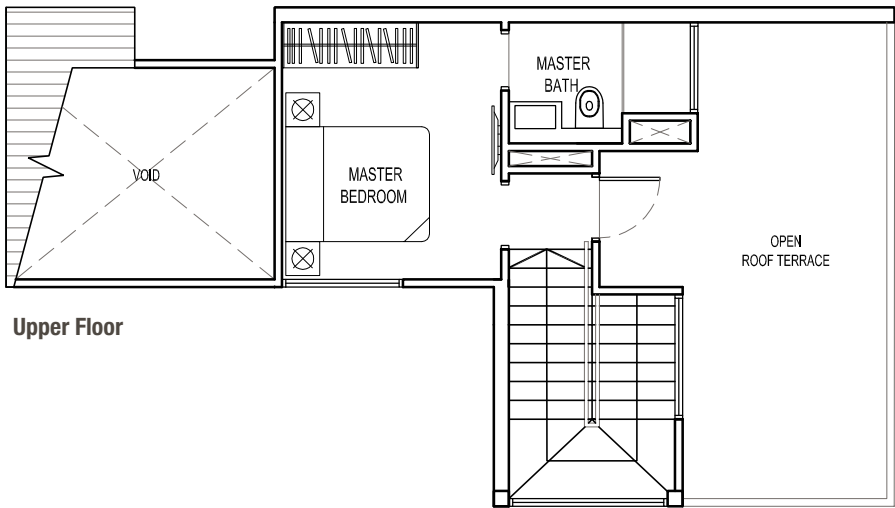
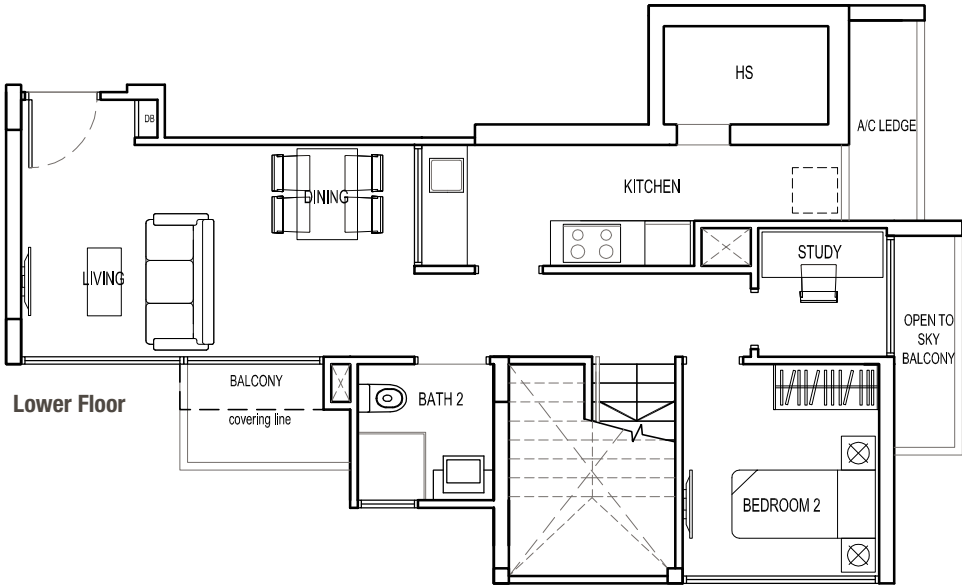
SCALE



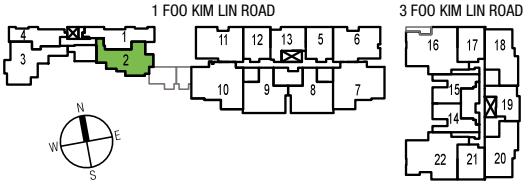
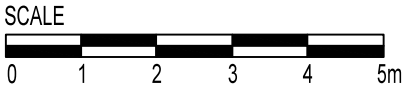
PENTHOUSE (2 BEDROOM + STUDY)



TYPE PH6
#05 – 02
118 sq m / 1,270 sq ft



*The plans are subject to change as may be required or approved by the relevant authorities.
These are not drawn to scale and are for the purpose of visual presentation of the different
layouts that are available. Area are estimates only and are subject to final survey.*

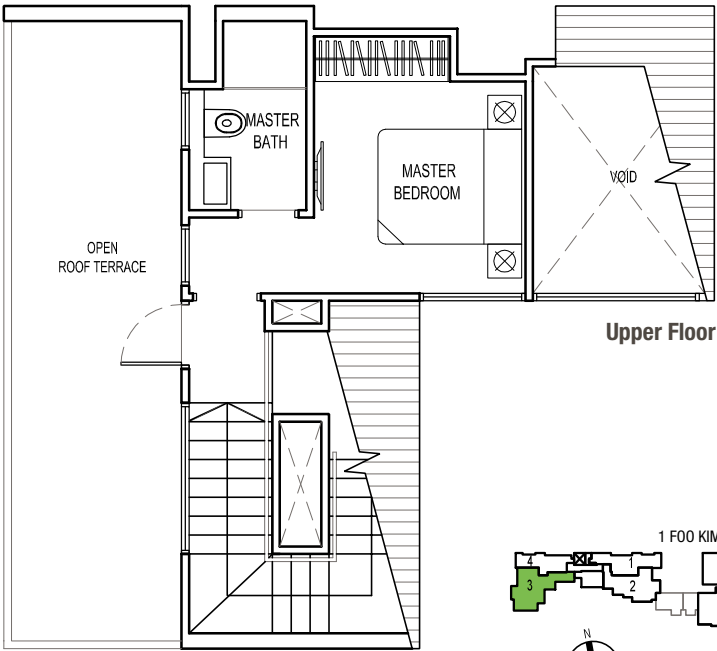
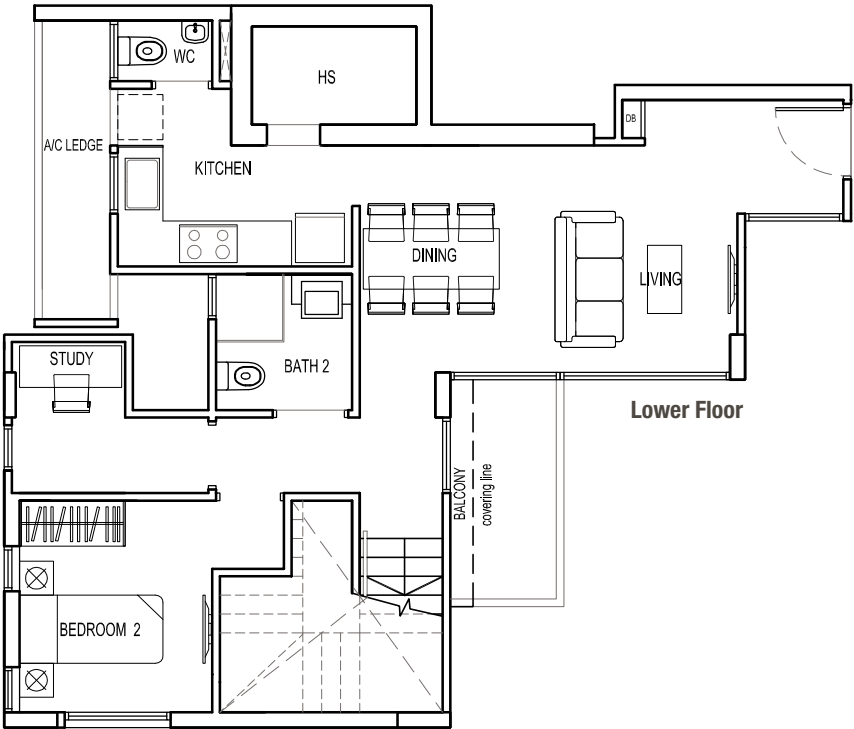


PENTHOUSE (2 BEDROOM + STUDY)

TYPE PH7

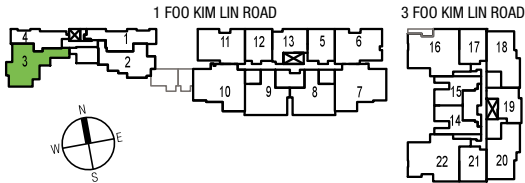
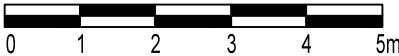
#05 – 03

123 sq m / 1,324 sq ft



The plans are subject to change as may be required or approved by the relevant authorities. These are not drawn to scale and are for the purpose of visual presentation of the different layouts that are available. Area are estimates only and are subject to final survey.

SCALE



PENTHOUSE (2 BEDROOM + STUDY)



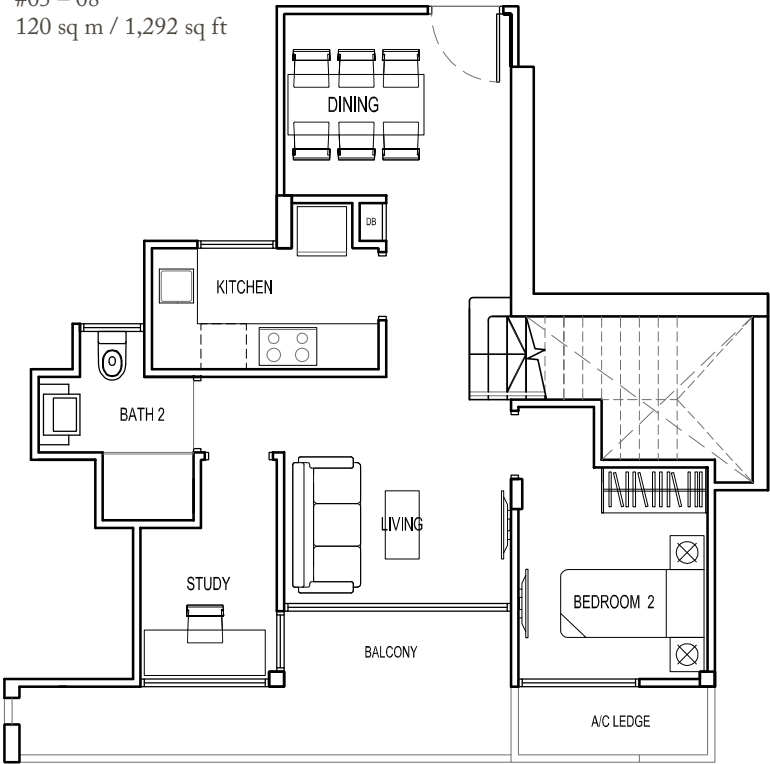
TYPE PH8

#05 – 09

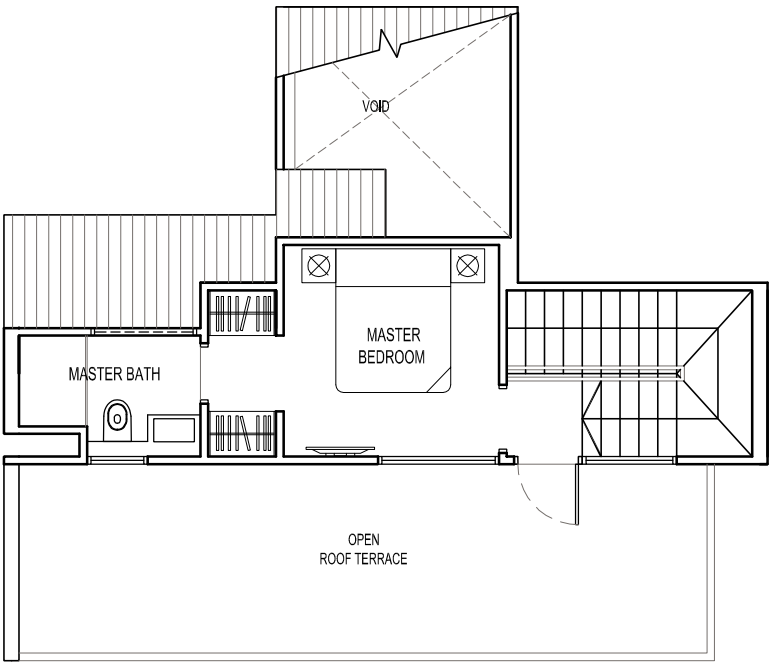
Mirror Image

#05 – 08

120 sq m / 1,292 sq ft

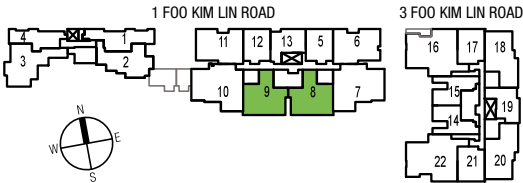
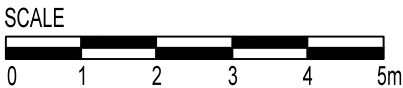


Lower Floor



Upper Floor

The plans are subject to change as may be required or approved by the relevant authorities. These are not drawn to scale and are for the purpose of visual presentation of the different layouts that are available. Area are estimates only and are subject to final survey.



PENTHOUSE (2 BEDROOM + STUDY)



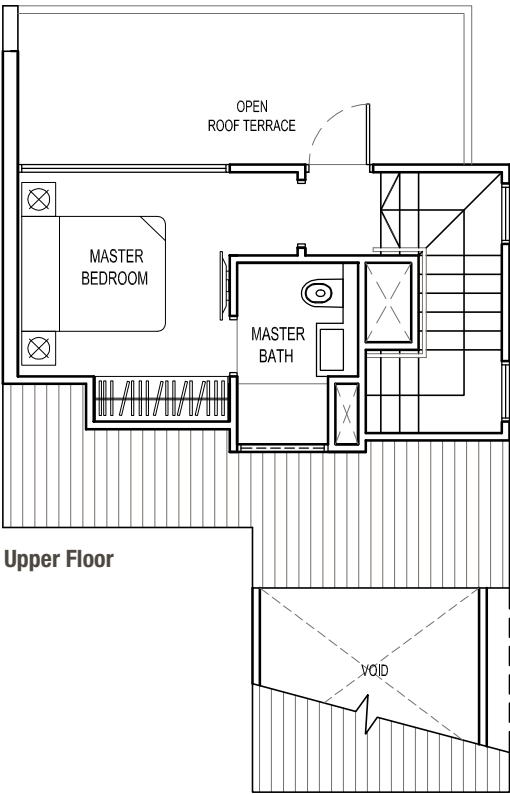
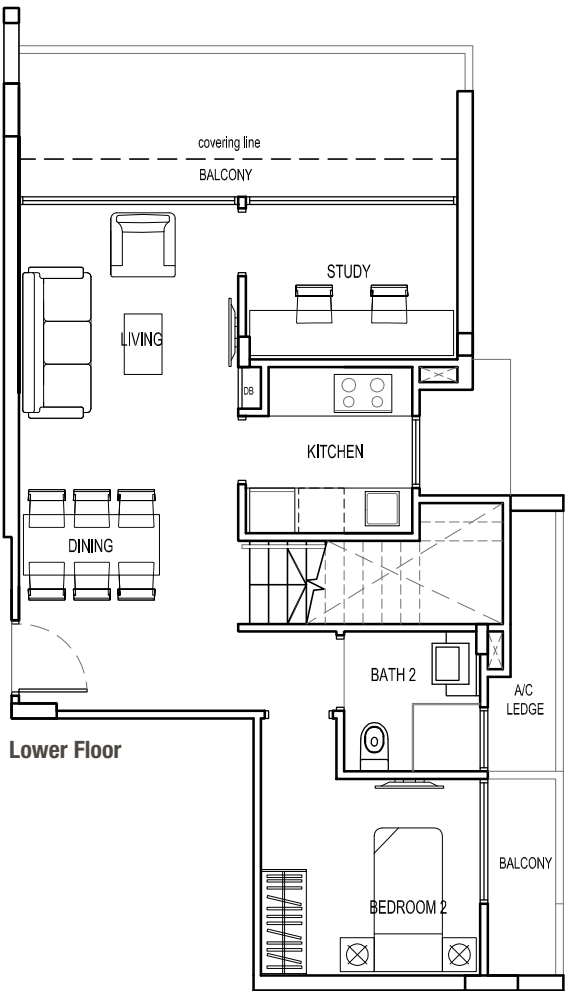
TYPE PH9

#05 – 18

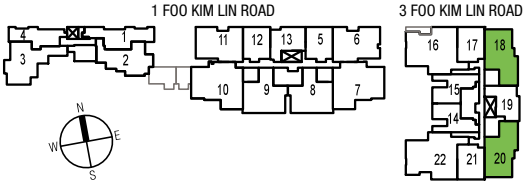
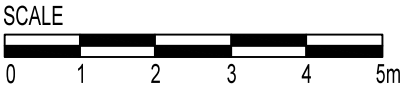
Mirror Image

#05 – 20

111 sq m / 1,195 sq ft



The plans are subject to change as may be required or approved by the relevant authorities. These are not drawn to scale and are for the purpose of visual presentation of the different layouts that are available. Area are estimates only and are subject to final survey.



PENTHOUSE (3 BEDROOM + STUDY)



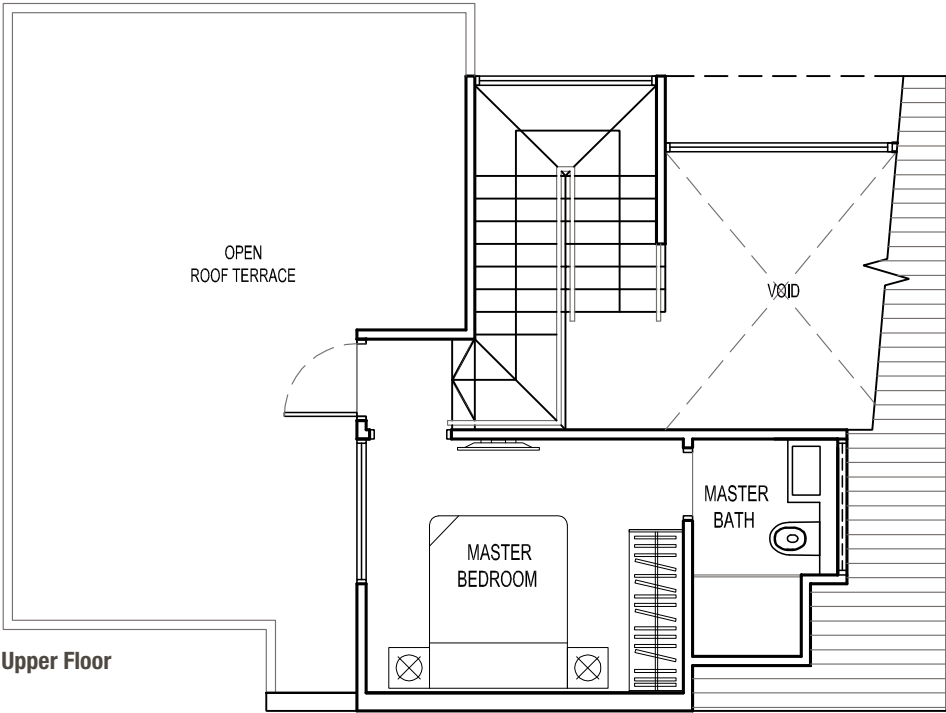
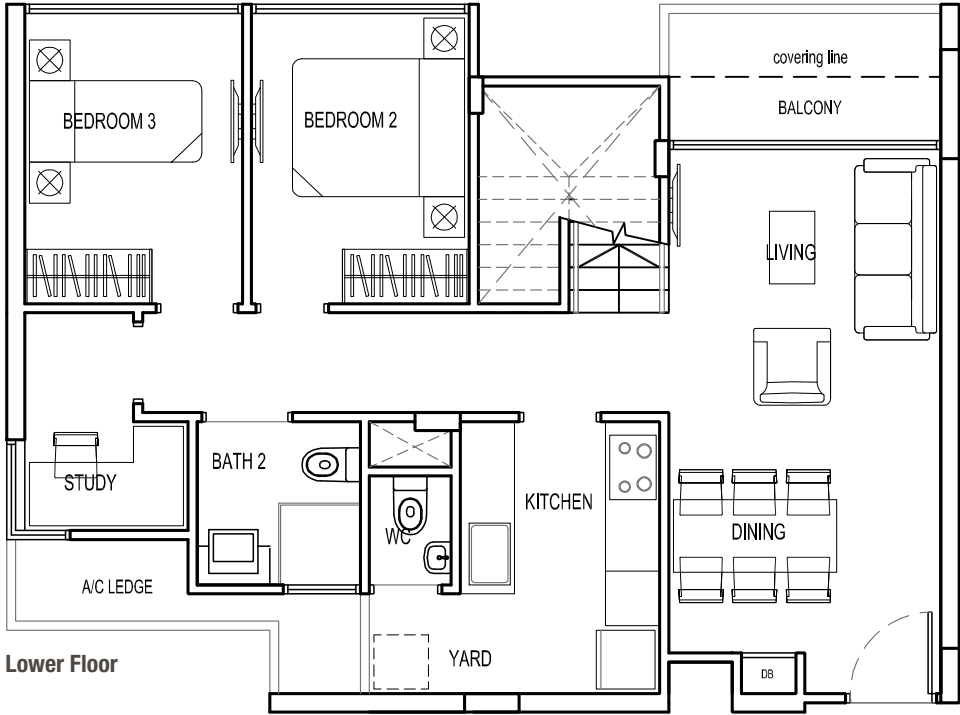
TYPE PH10

#05 – 11

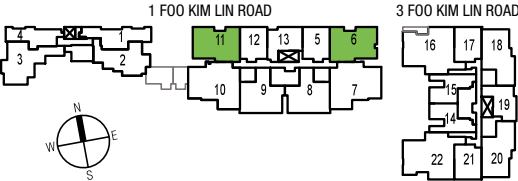
Mirror Image

#05 – 06

137 sq m / 1,475 sq ft



The plans are subject to change as may be required or approved by the relevant authorities. These are not drawn to scale and are for the purpose of visual presentation of the different layouts that are available. Area are estimates only and are subject to final survey.



PENTHOUSE (3 BEDROOM + STUDY)



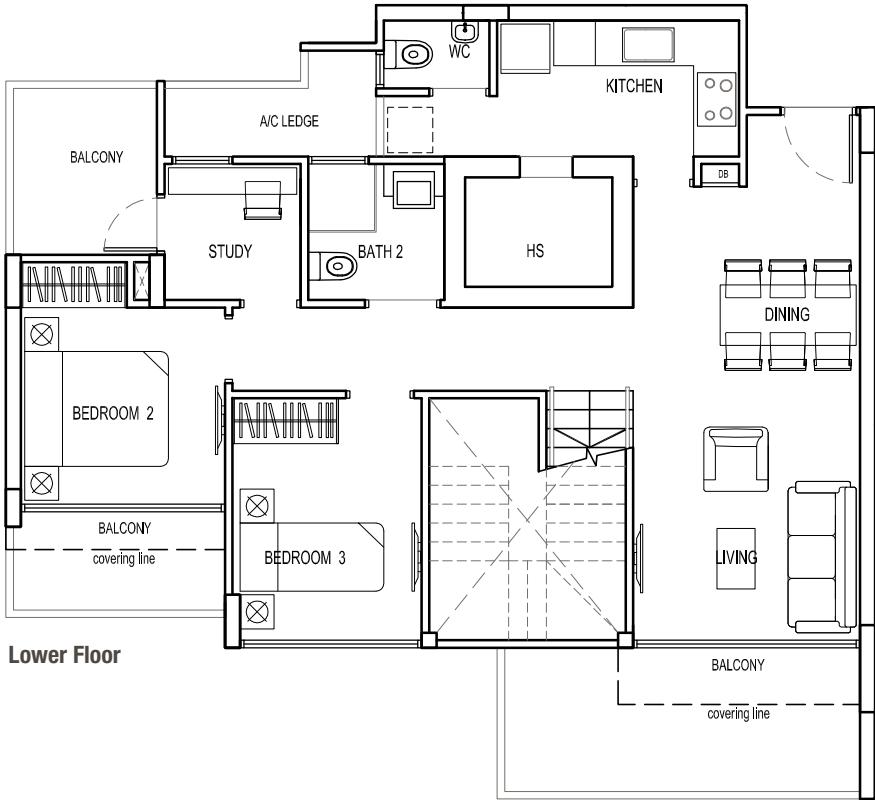
TYPE PH11

#05 – 10

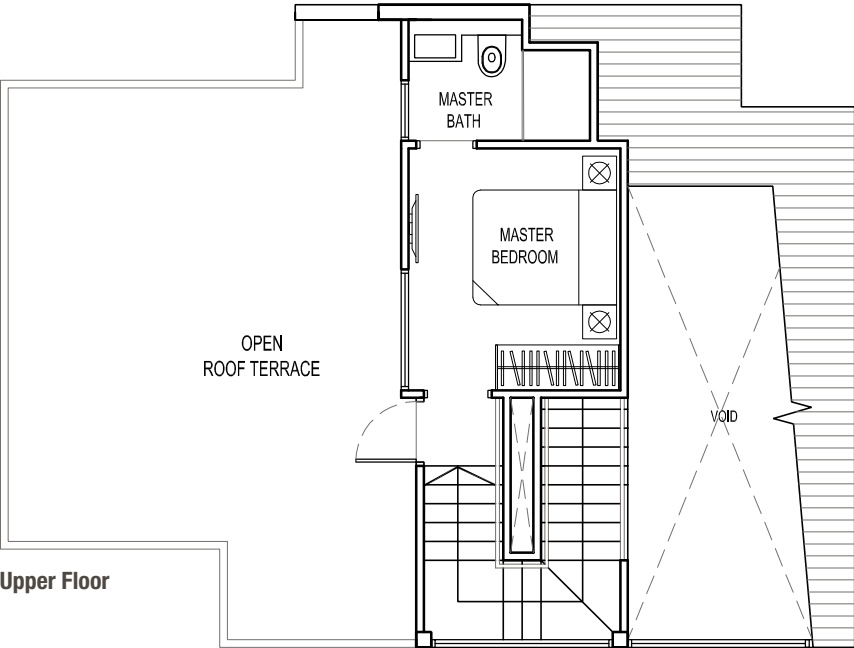
Mirror Image

#05 – 07

169 sq m / 1,819 sq ft

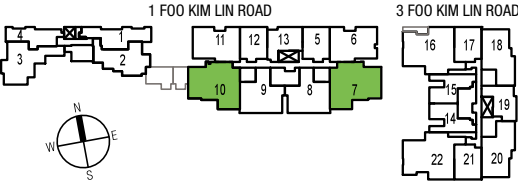
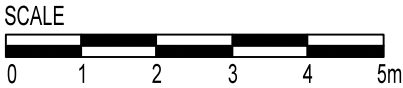


Lower Floor



Upper Floor

The plans are subject to change as may be required or approved by the relevant authorities. These are not drawn to scale and are for the purpose of visual presentation of the different layouts that are available. Area are estimates only and are subject to final survey.



PENTHOUSE (3 BEDROOM + STUDY)



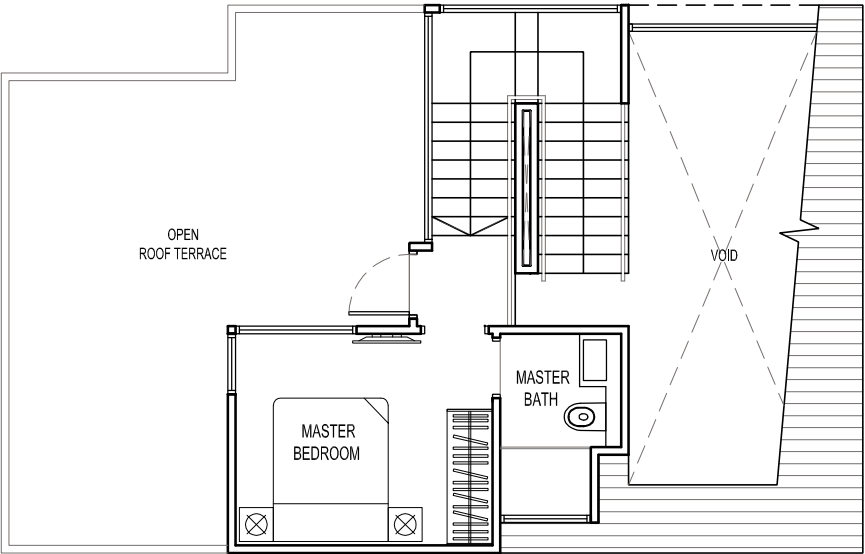
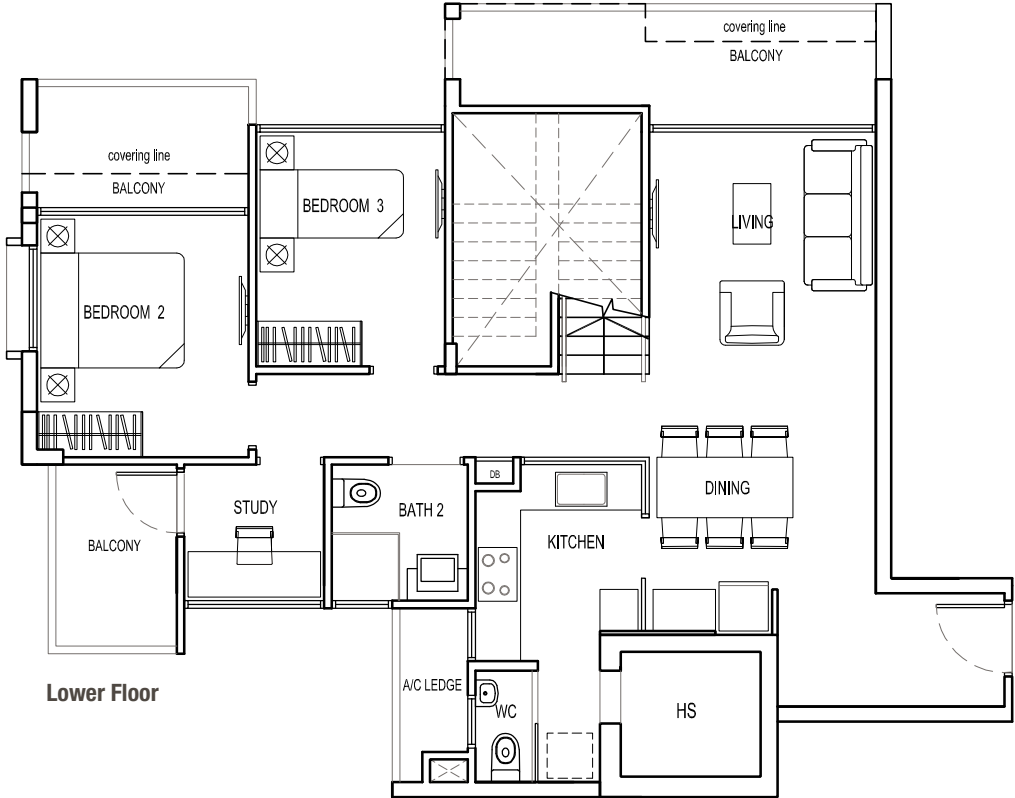
TYPE PH12

#05 – 16

Mirror Image

#05 – 22

169 sq m / 1,819 sq ft



The plans are subject to change as may be required or approved by the relevant authorities.
These are not drawn to scale and are for the purpose of visual presentation of the different
layouts that are available. Area are estimates only and are subject to final survey.

