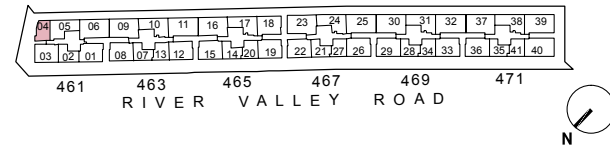
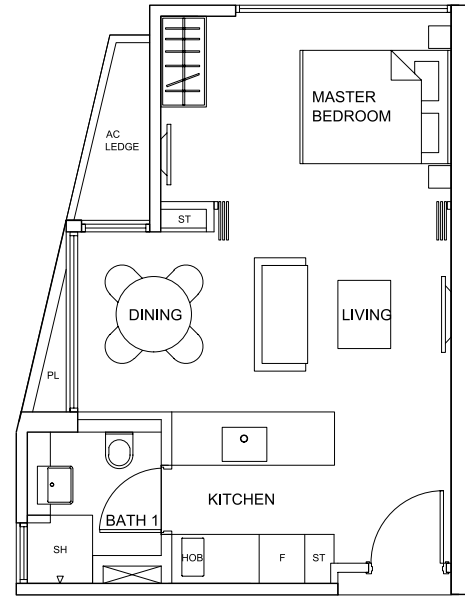


ONE BEDROOM

Type A1

40 sq m (430 sq ft)

No.461: #03-04 to #06-04



Type A3

42 sq m (452 sq ft)

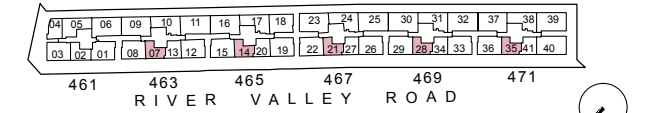
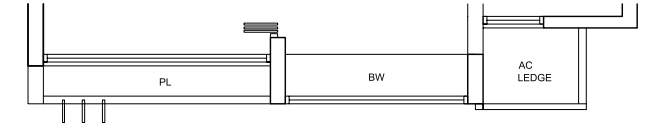
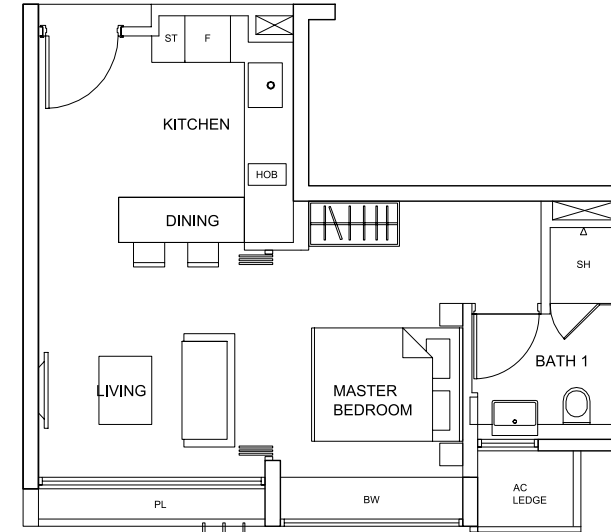
No.463: #02-07, #03-07, #06-07

No.465: #02-14, #03-14, #06-14, #07-14

No.467: #02-21, #03-21, #06-21, #07-21

No.469: #02-28, #03-28, #06-28

No.471: #02-35, #03-35, #06-35



No.463: #04-07, #05-07

No.465: #04-14, #05-14

No.467: #04-21, #05-21

No.469: #04-28, #05-28

No.471: #04-35, #05-35



Type A2

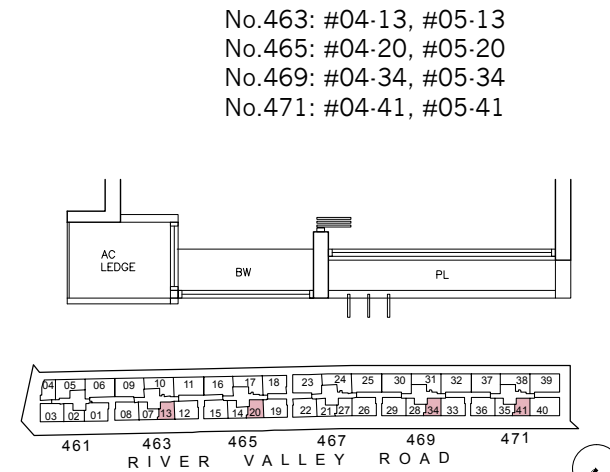
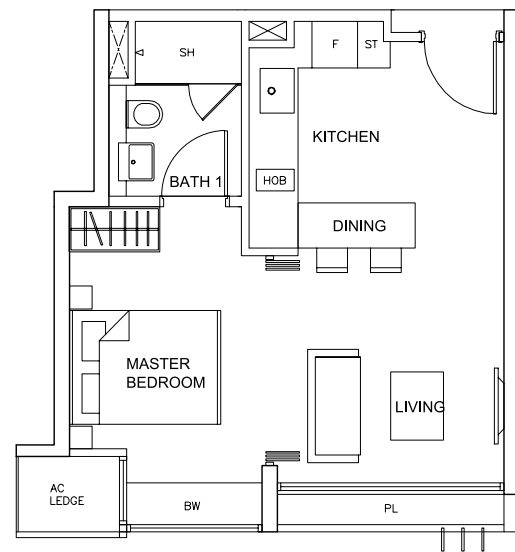
39 sq m (419 sq ft)

No.463: #02-13, #03-13, #06-13

No.465: #02-20, #03-20, #06-20, #07-20

No.469: #02-34, #03-34, #06-34

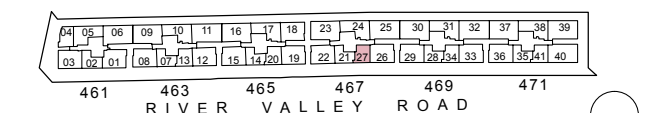
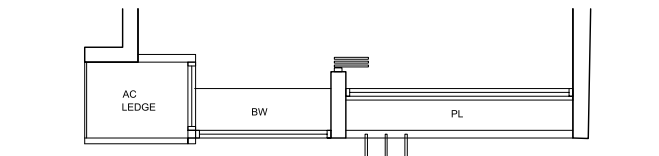
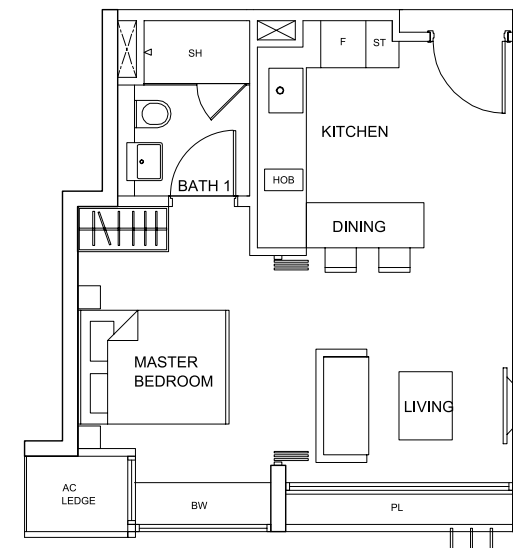
No.471: #02-41, #03-41, #06-41



Type A4

39 sq m (419 sq ft)

No.467: #02-27, #03-27, #06-27, #07-27

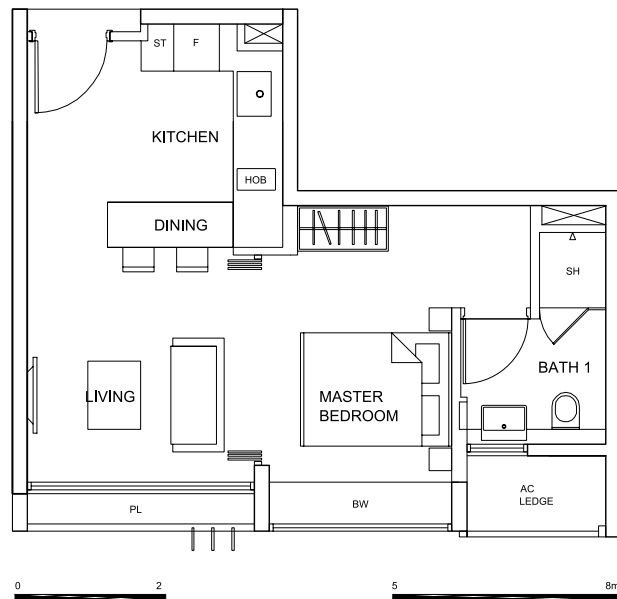


No.467: #04-27, #05-27

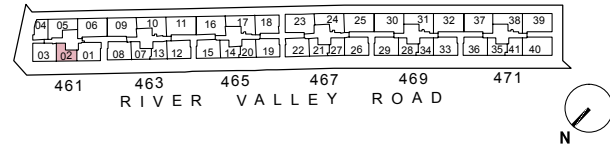
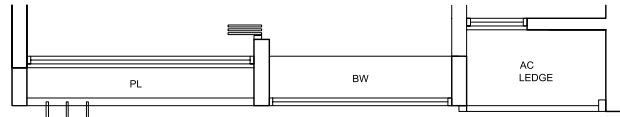
Type A5

42 sq m (452 sq ft)

No.461: #02-02, #03-02, #06-02



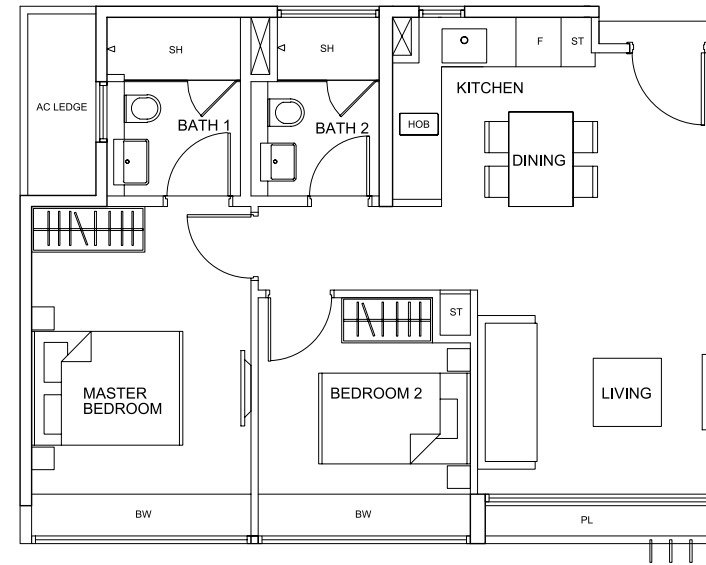
No.461: #04-02, #05-02



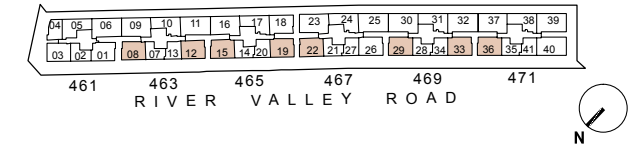
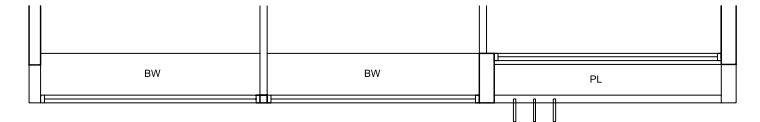
Type B2

63 sq m (678 sq ft)

No.463: #02-08, #03-08, #06-08, #02-12, #03-12, #06-12
 No.465: #02-15, #03-15, #06-15, #02-19, #03-19, #06-19
 No.467: #02-22, #03-22, #06-22
 No.469: #02-29, #03-29, #06-29, #02-33, #03-33, #06-33
 No.471: #02-36, #03-36, #06-36



No.463: #04-08, #05-08, #04-12, #05-12
 No.465: #04-15, #05-15, #04-19, #05-19
 No.467: #04-22, #05-22
 No.469: #04-29, #05-29, #04-33, #05-33
 No.471: #04-36, #05-36

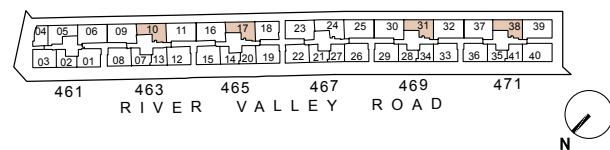
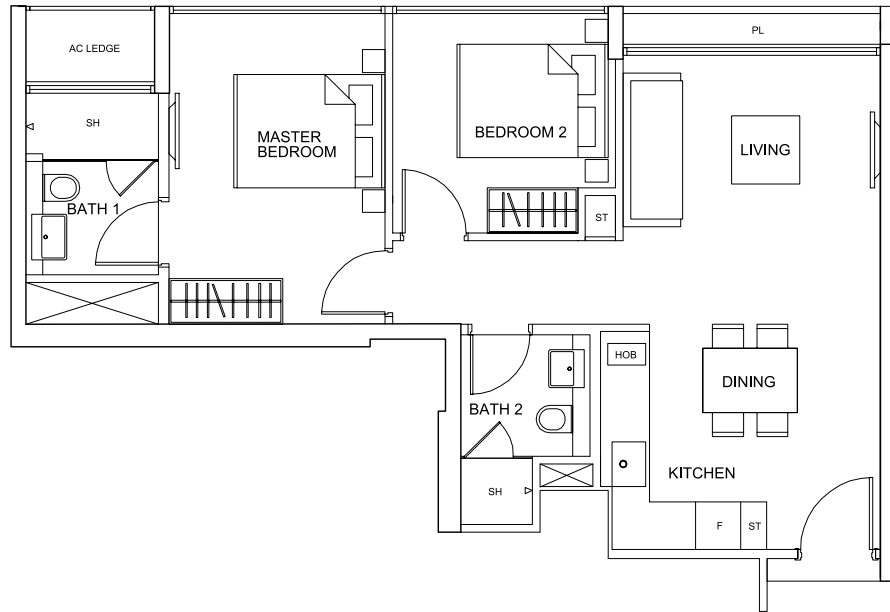


TWO BEDROOM

Type B1

64 sq m (688 sq ft)

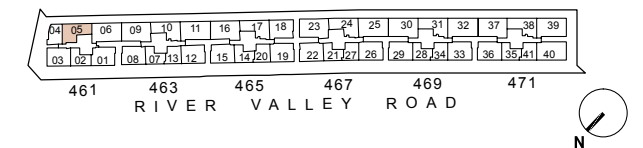
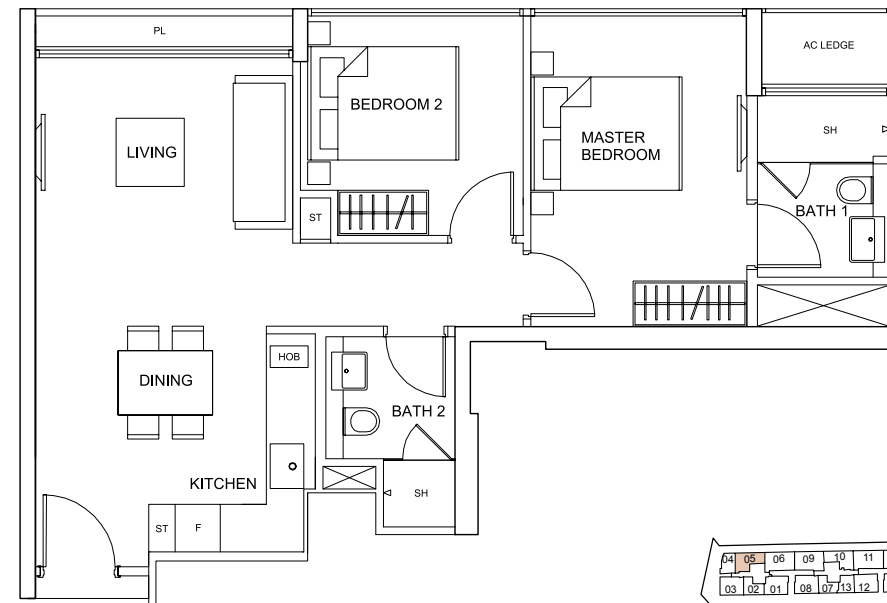
No.463: #02-10 to #06-10
 No.465: #02-17 to #07-17
 No.469: #02-31 to #06-31
 No.471: #02-38 to #06-38



Type B3

64 sq m (688 sq ft)

No.461: #02-05 to #06-05



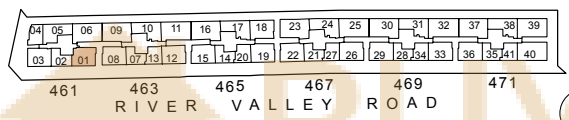
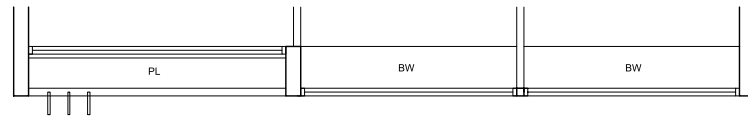
Type B4

65 sq m (699 sq ft)

No.461: #02-01, #03-01, #06-01



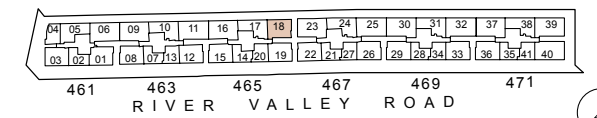
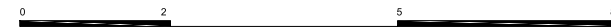
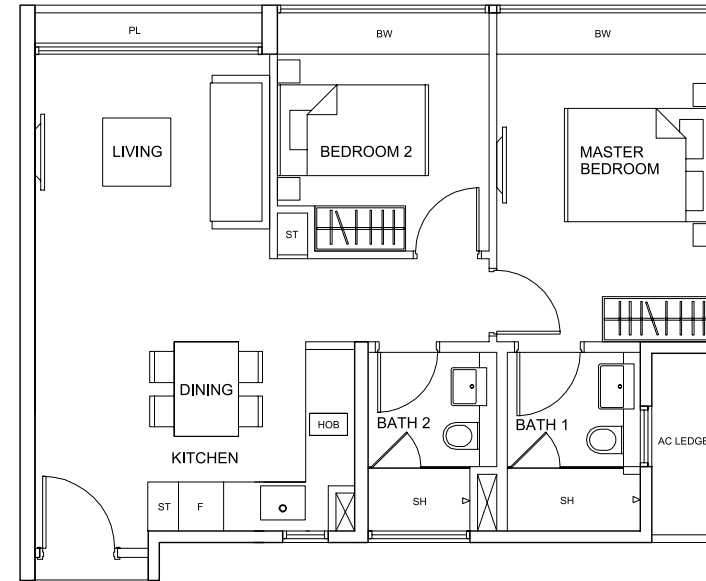
No.461: #04-01, #05-01



Type B6

64 sq m (688 sq ft)

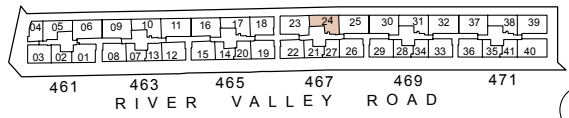
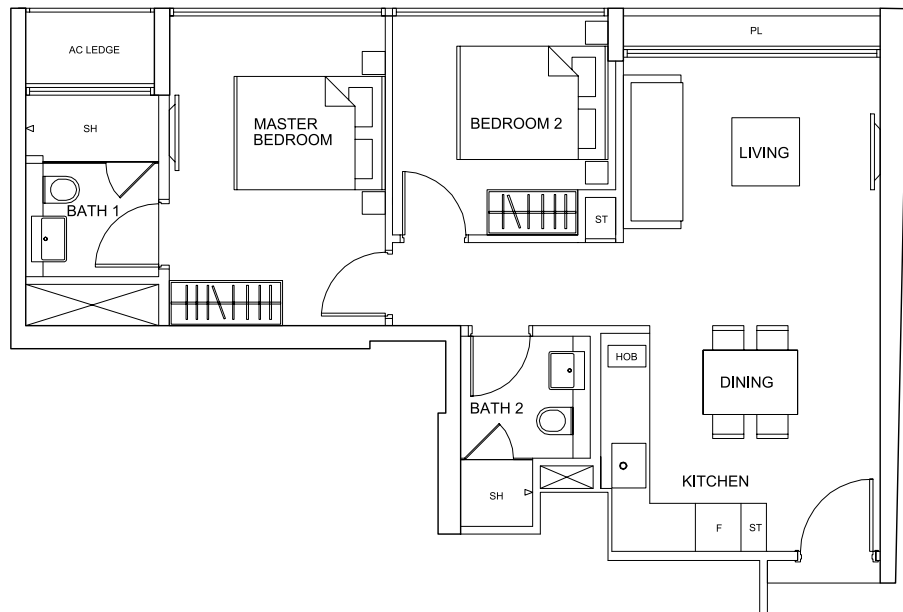
No.465: #02-18 to #07-18



Type B5

64 sq m (688 sq ft)

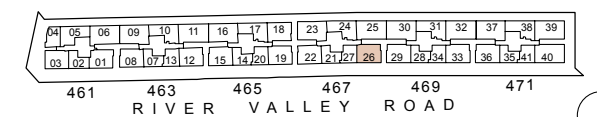
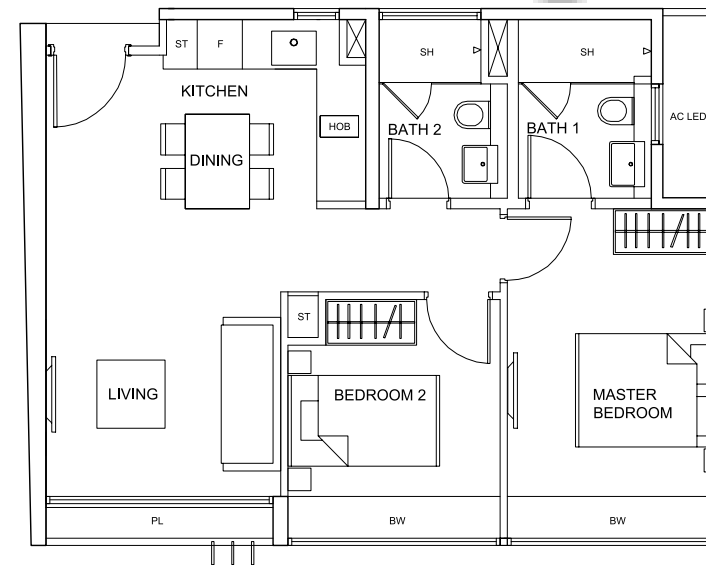
No.467: #02-24 to #07-24



Type B7

63 sq m (678 sq ft)

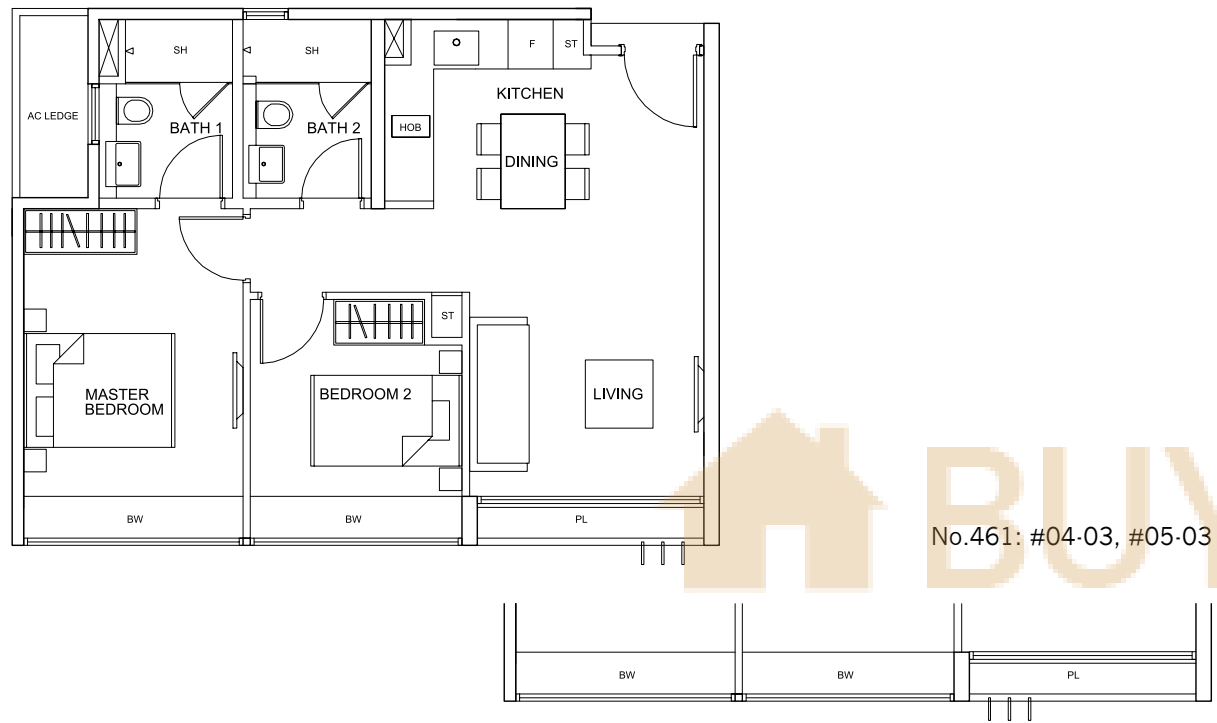
No.467: #02-26, #03-26, #06-26



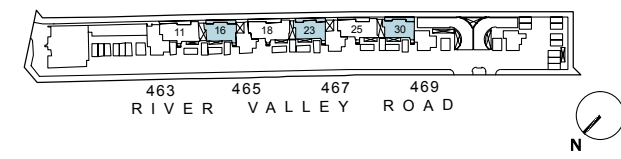
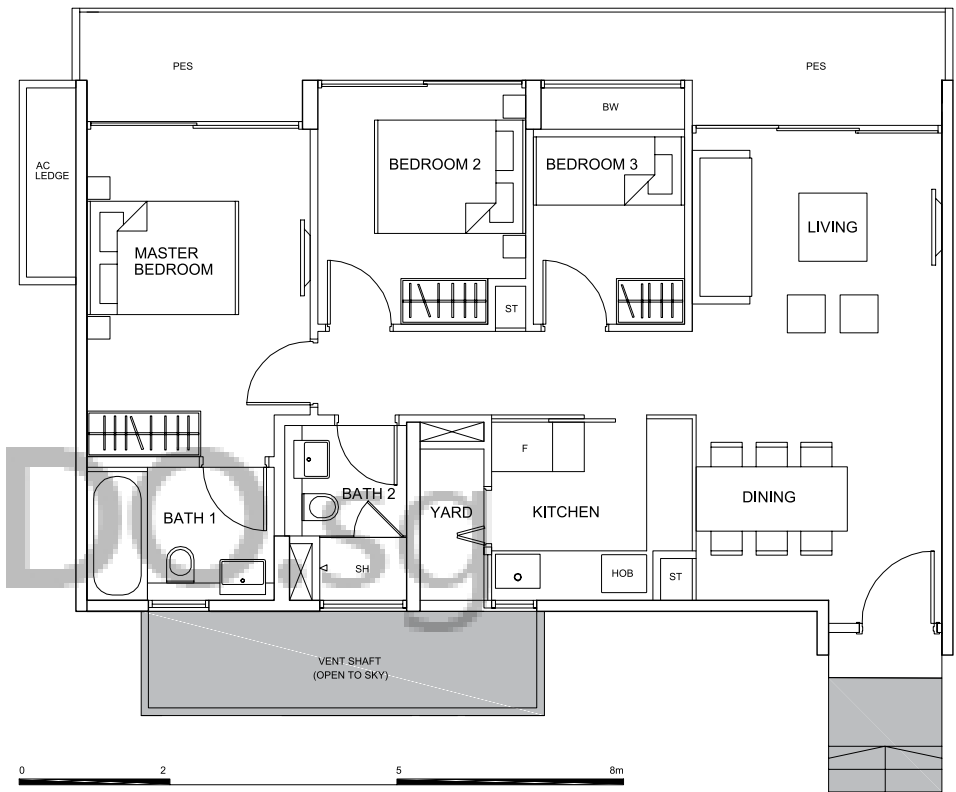
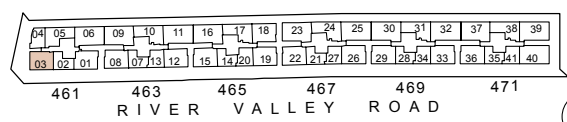
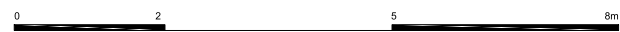
No.467: #04-26, #05-26

Type B8
 63 sq m (678 sq ft)
 No.461: #03-03, #06-03

THREE BEDROOM
 Type C1(i)
 93 sq m (1,001 sq ft)
 No.465: #01-16
 No.467: #01-23
 No.469: #01-30



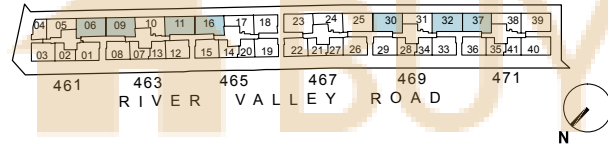
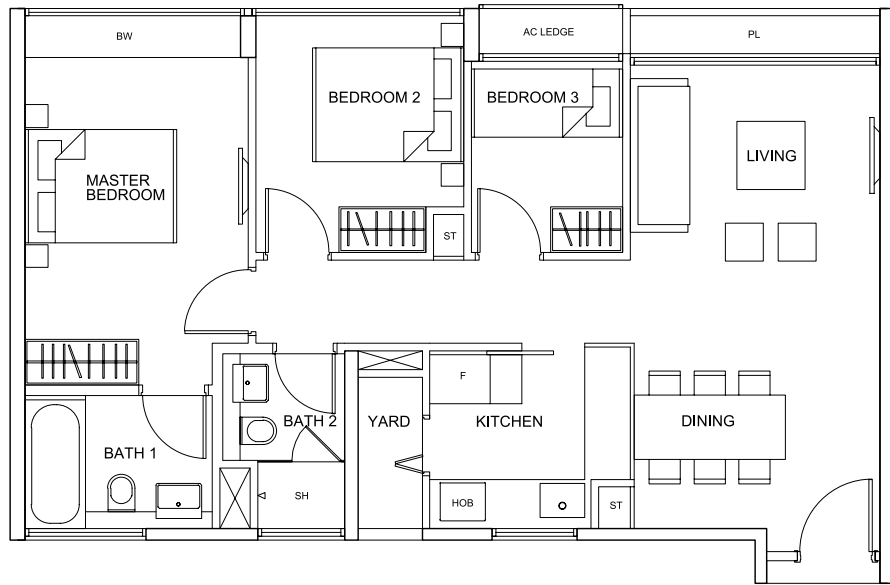
No.461: #04-03, #05-03



*(Unit Entrance Steps/Landing not included in strata area)

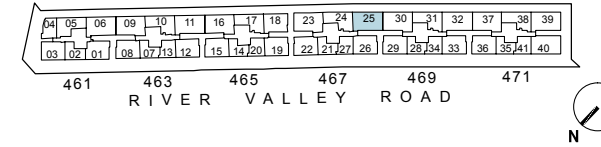
Type C1

80 sq m (861 sq ft)
 No.461: #02-06 to #06-06
 No.463: #02-09 to #06-09
 #02-11 to #06-11
 No.465: #02-16 to #06-16
 No.469: #02-30 to #06-30
 #02-32 to #06-32
 No.471: #02-37 to #06-37



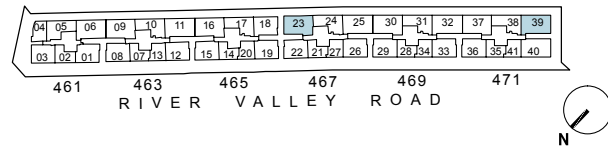
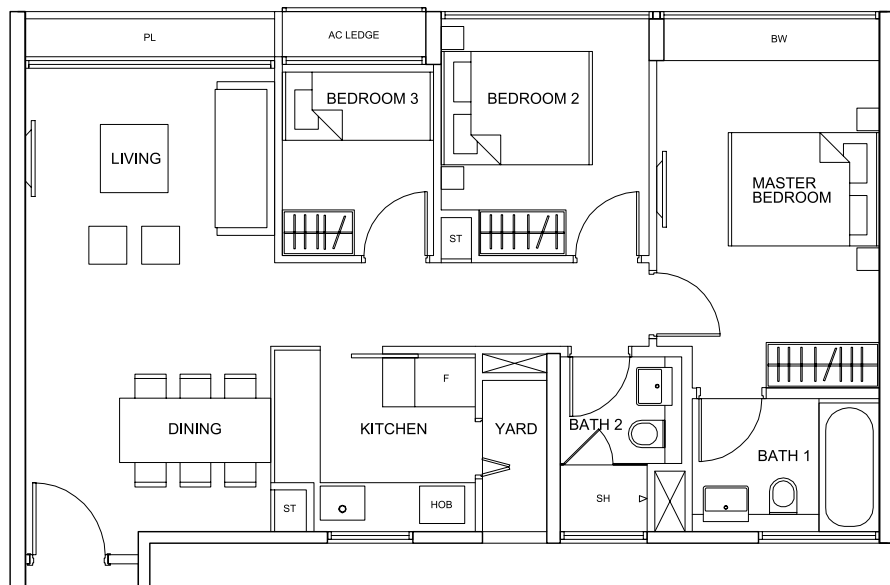
Type C3

80 sq m (861 sq ft)
 No.467: #02-25 to #06-25



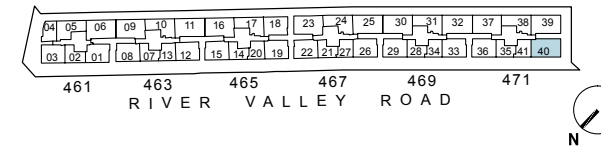
Type C2

80 sq m (861 sq ft)
 No.467: #02-23 to #07-23
 No.471: #02-39 to #06-39



Type C4

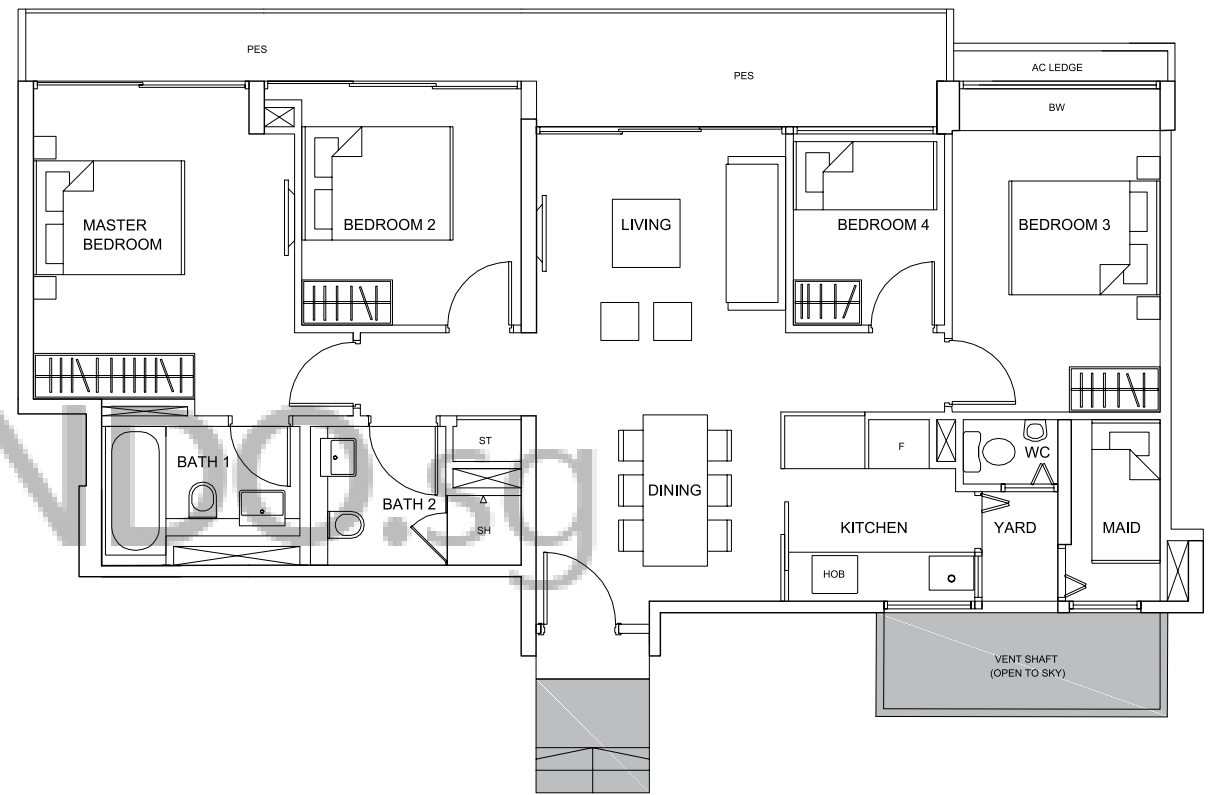
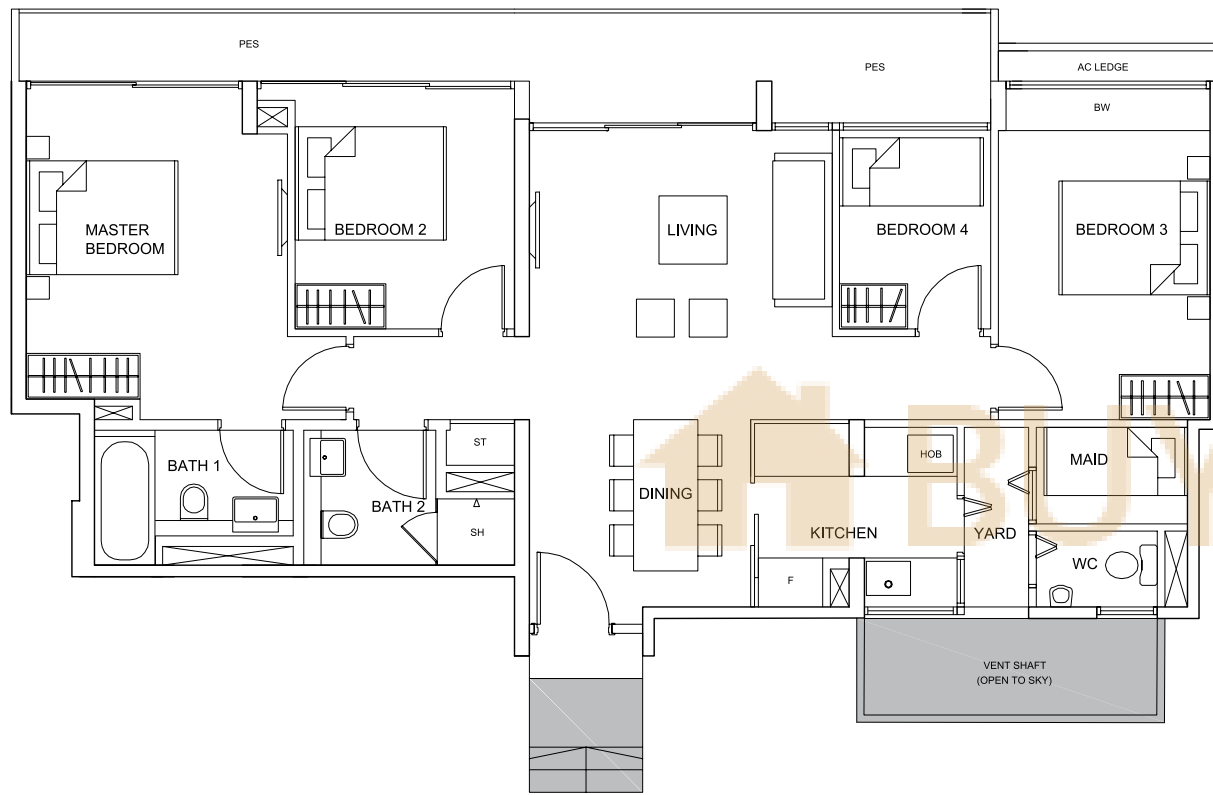
79 sq m (850 sq ft)
 No.471: #02-40, #03-40, #06-40



No.471: #04-40, #05-40

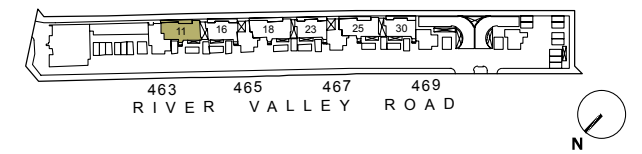
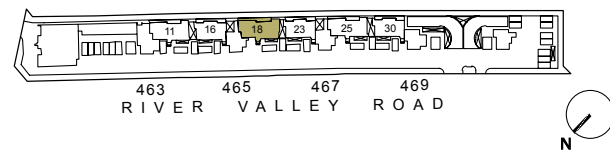
FOUR BEDROOM
 Type D1(i)
 118 sq m (1,270 sq ft)
 No.465: #01-18

Type D2(i)
 112 sq m (1,205 sq ft)
 No.463: #01-11



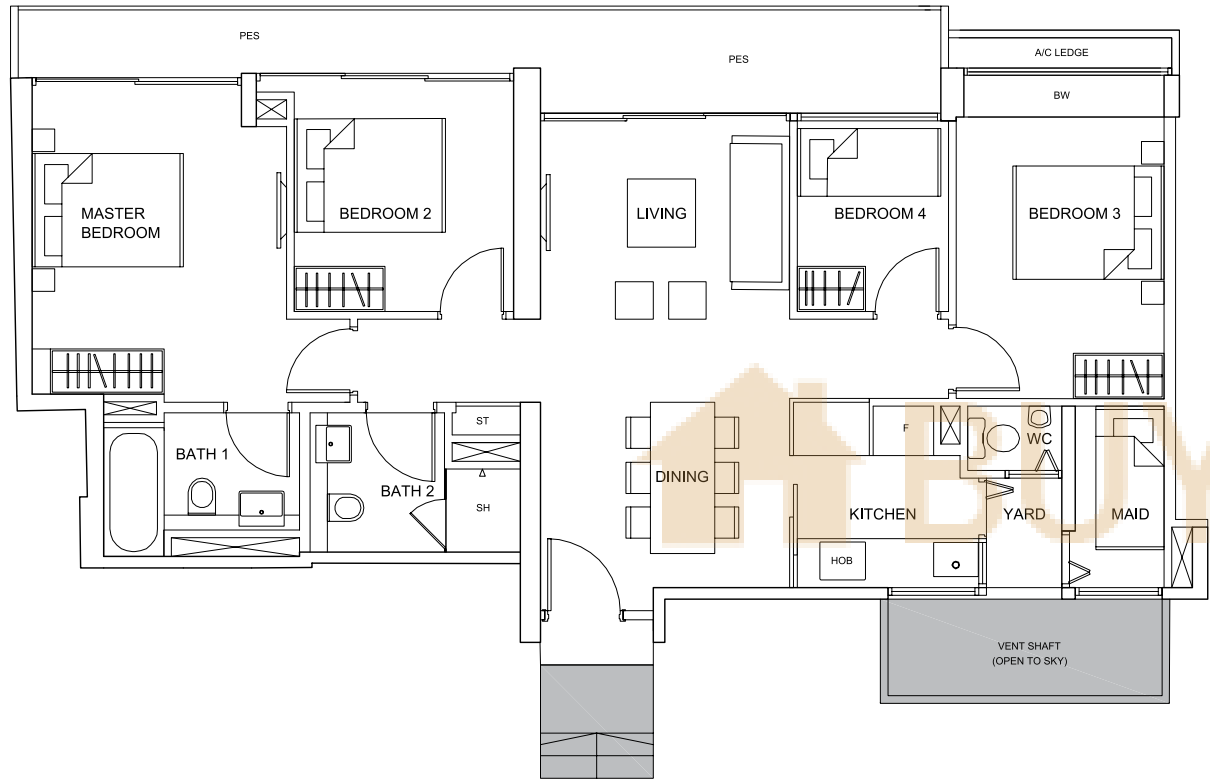
*(Unit Entrance Steps/Landing not included in strata area)

*(Unit Entrance Steps/Landing not included in strata area)

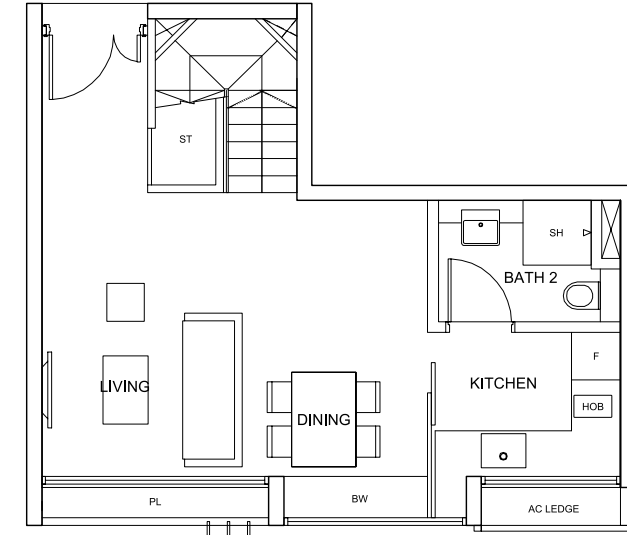
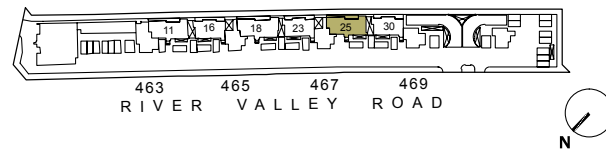


Type D3(i)
 112 sq m (1,205 sq ft)
 No.467: #01-25

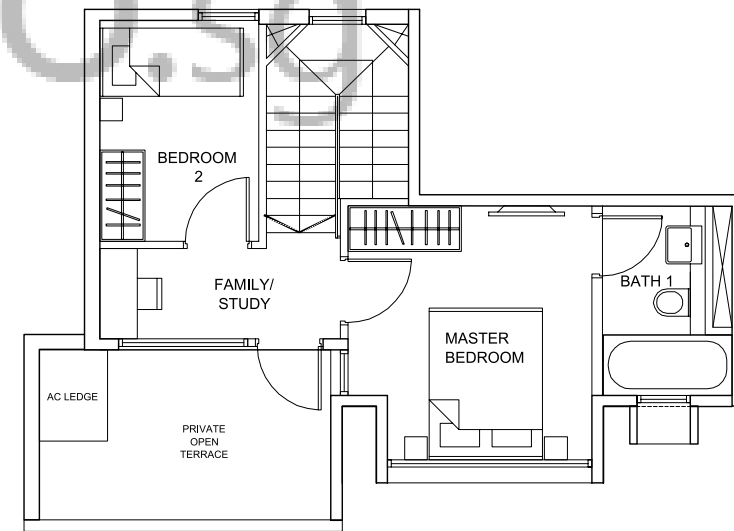
PENTHOUSE
 Type PH-B1s
 84 sq m (904 sq ft)
 No.461: #07-02
 No.463: #07-07
 No.469: #07-28
 No.471: #07-35



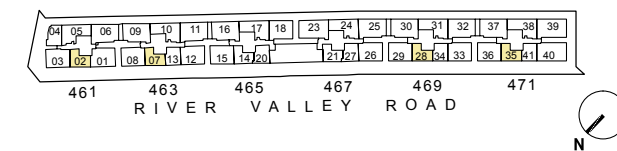
*(Unit Entrance Steps/Landing not included in strata area)



LOWER



UPPER



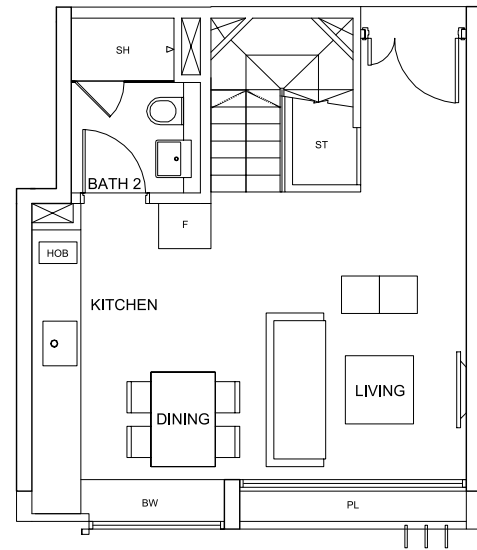
Type PH-B2s

80 sq m (861 sq ft)

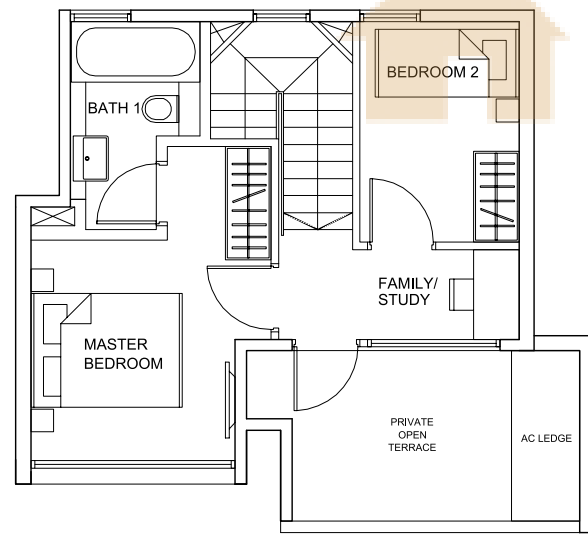
No.463: #07-13

No.469: #07-34

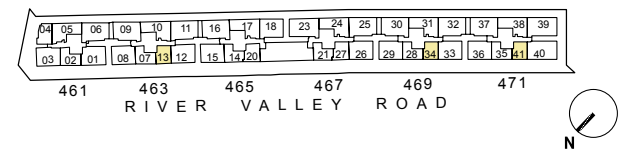
No.471: #07-41



LOWER



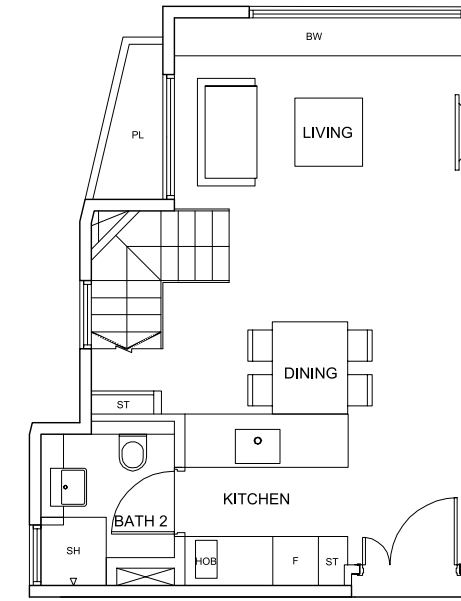
UPPER



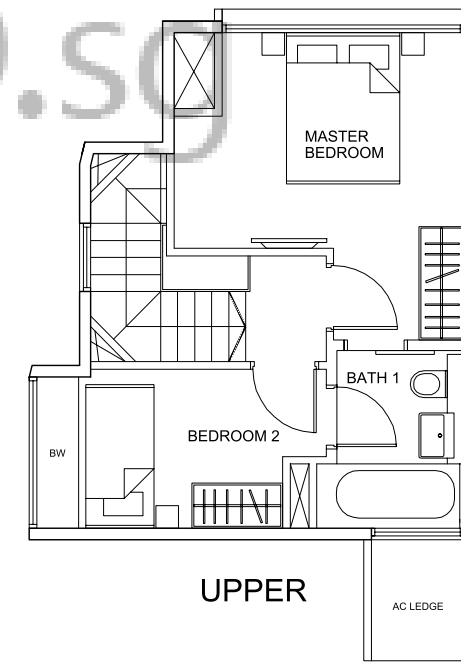
Type PH-B3

74 sq m (796 sq ft)

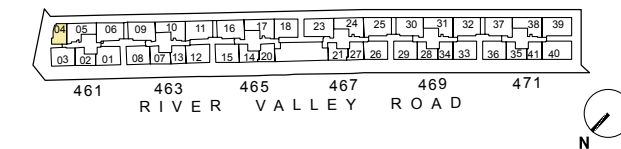
No.461: #07-04



LOWER



UPPER

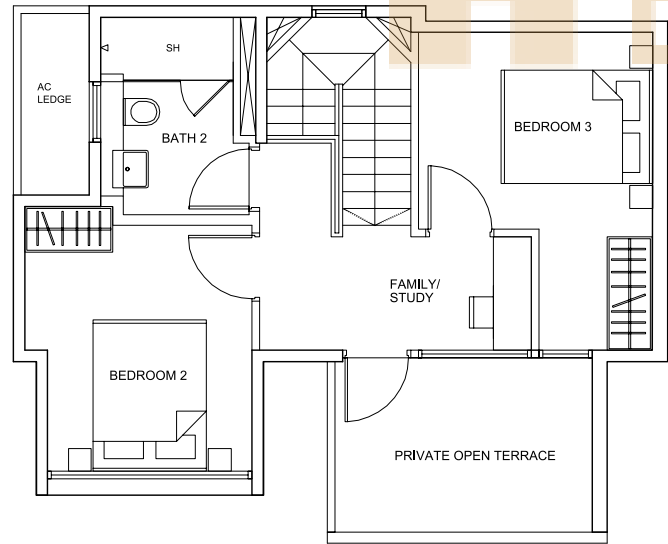


Type PH-C1s

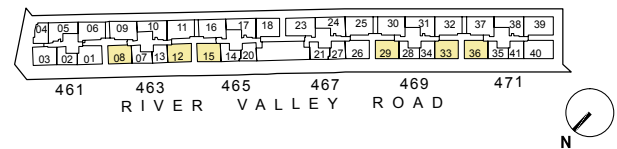
113 sq m (1,216 sq ft)
 No.463: #07-08 & #07-12
 No.465: #07-15
 No.469: #07-29 & #07-33
 No.471: #07-36



LOWER

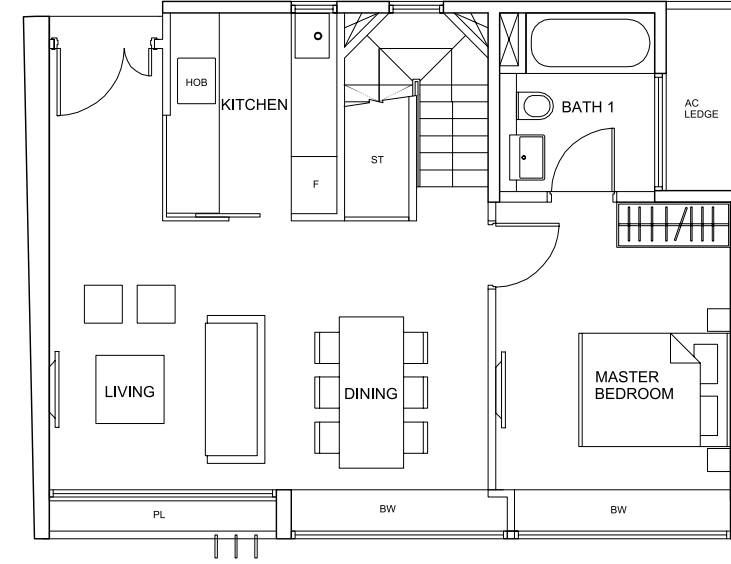


UPPER

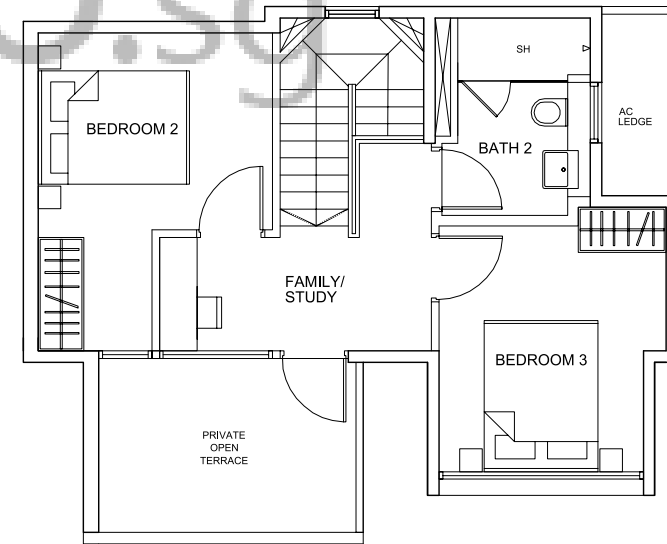


Type PH-C2s

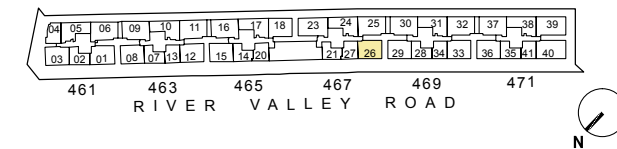
113 sq m (1,216 sq ft)
 No.467: #07-26



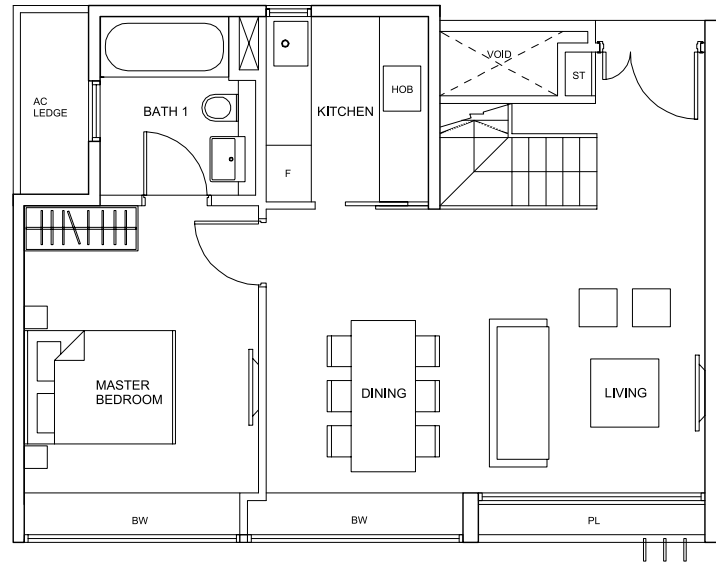
LOWER



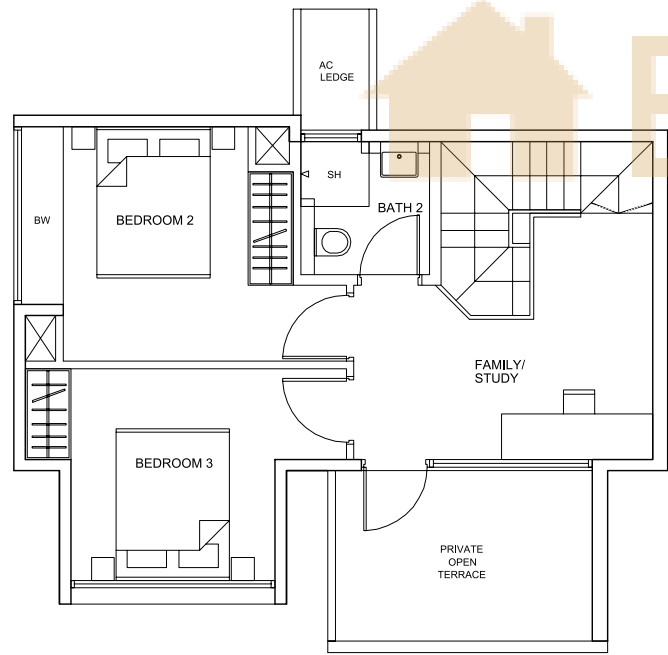
UPPER



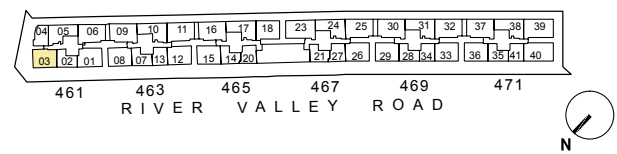
Type PH-C3s
 115 sq m (1,237 sq ft)
 No.461: #07-03



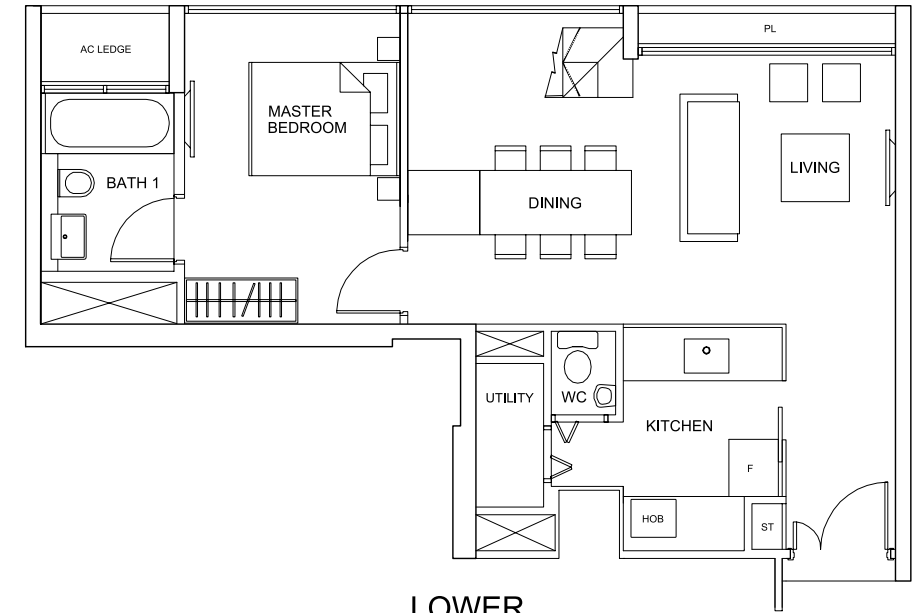
LOWER



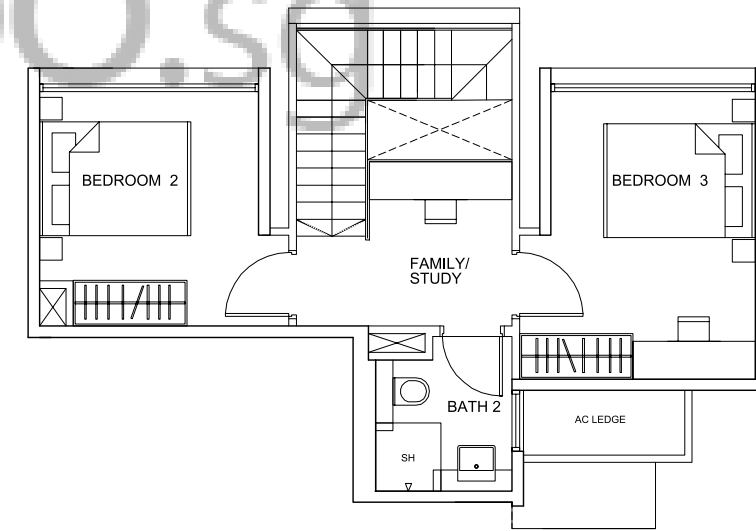
UPPER



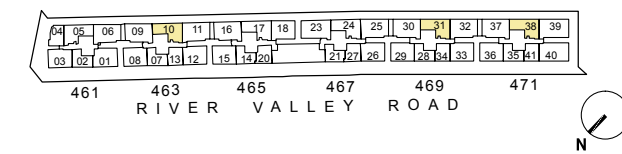
Type PH-C4s
 104 sq m (1,119 sq ft)
 No.463: #07-10
 No.469: #07-31
 No.471: #07-38



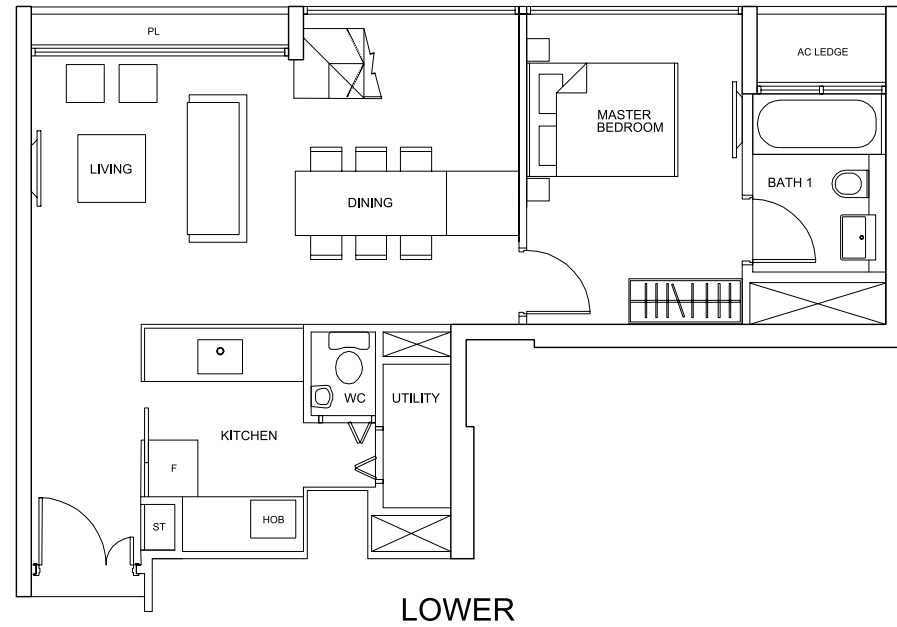
LOWER



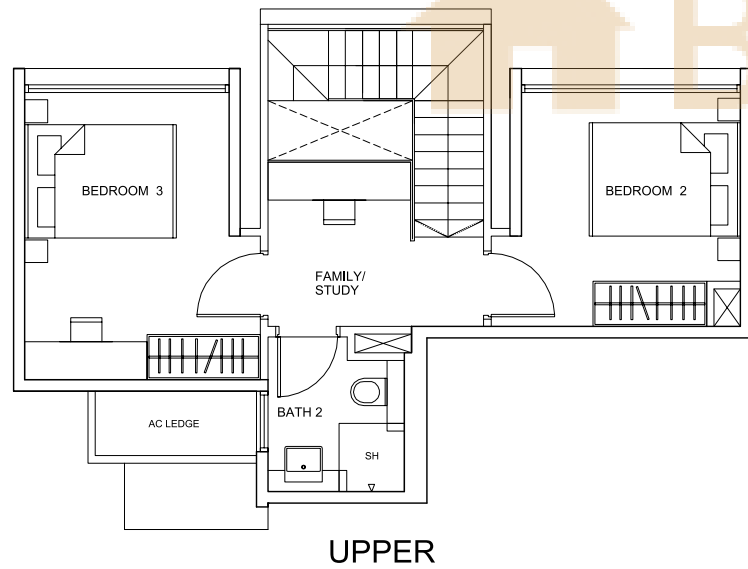
UPPER



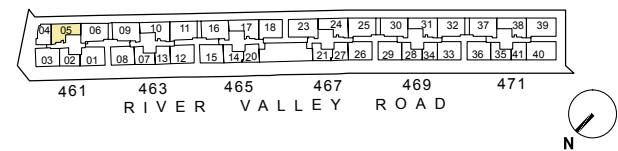
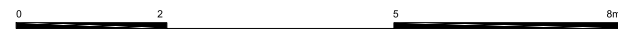
Type PH-C5s
 105 sq m (1,130 sq ft)
 No.461: #07-05



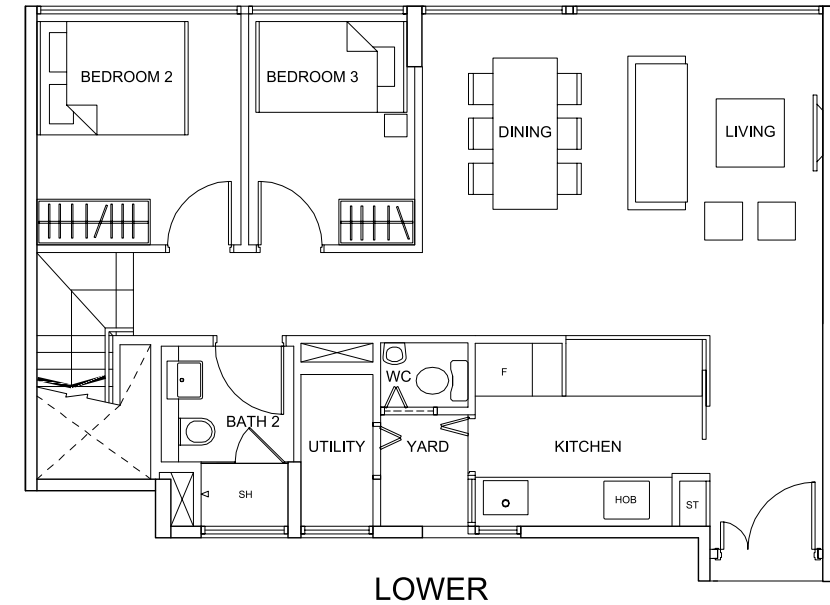
LOWER



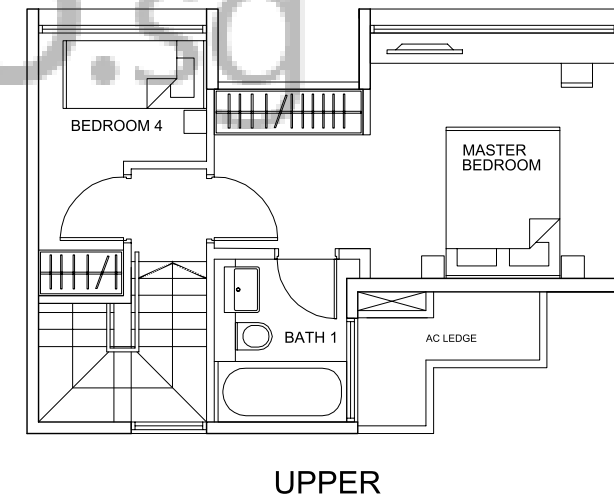
UPPER



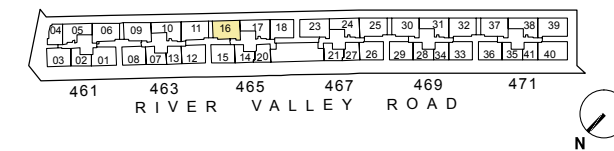
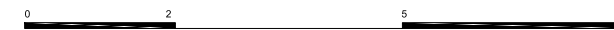
Type PH-D1
 108 sq m (1,162 sq ft)
 No.465: #07-16



LOWER



UPPER



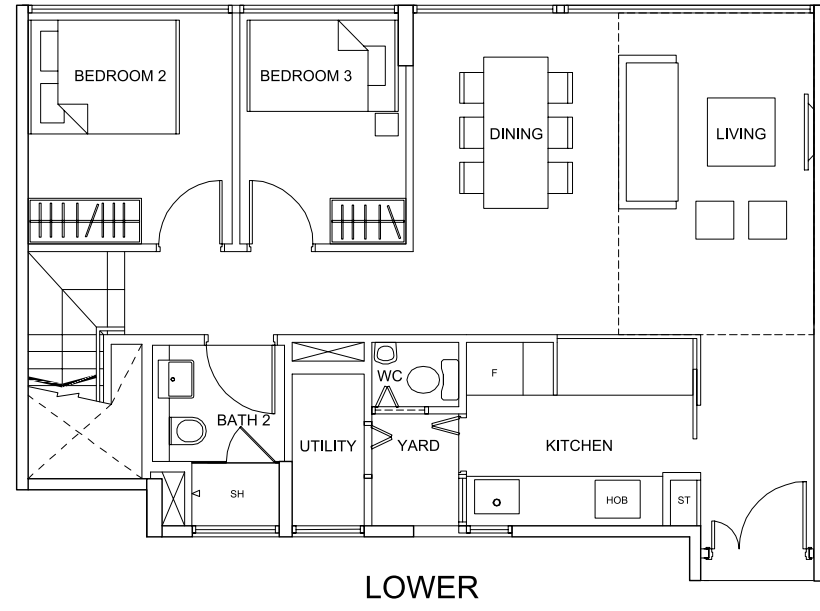
Type PH-D1a

120 sq m (1,291 sq ft)

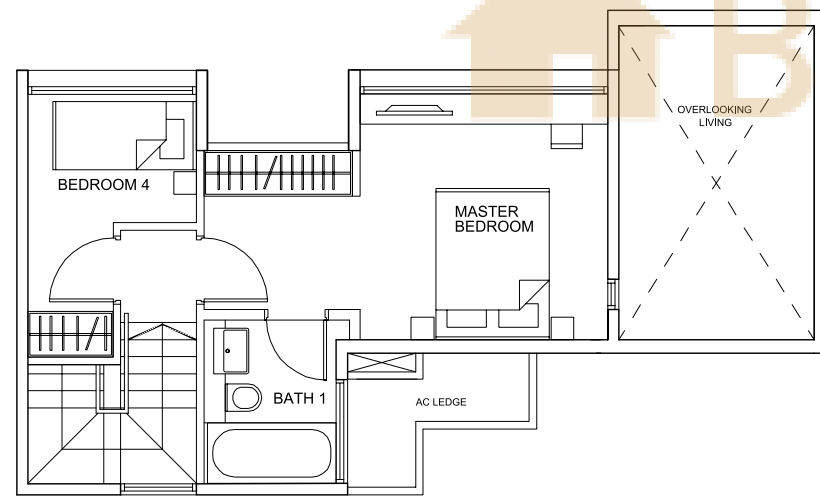
No.463: #07-09

No.469: #07-30

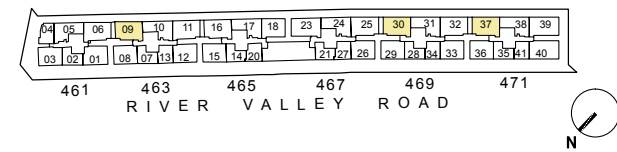
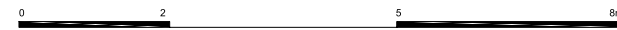
No.471: #07-37



LOWER



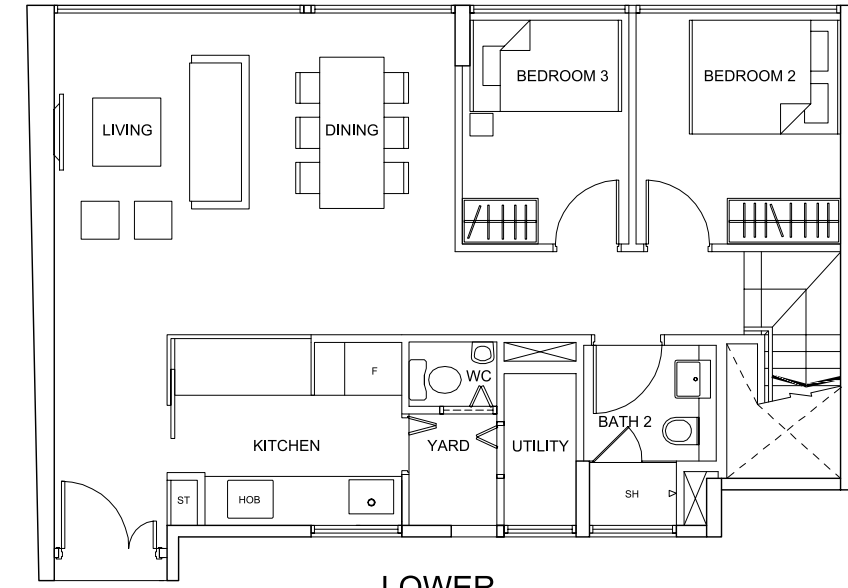
UPPER



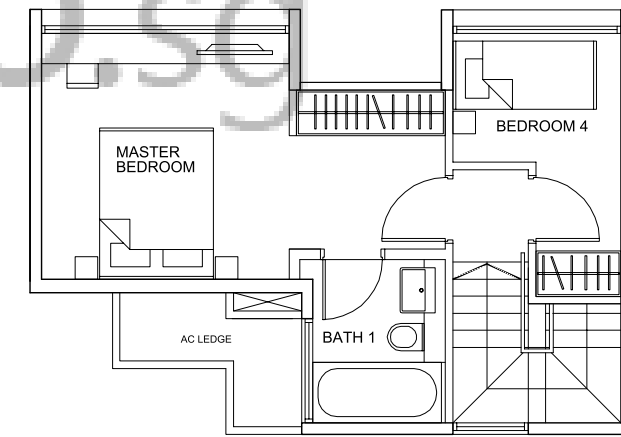
Type PH-D2

108 sq m (1,162 sq ft)

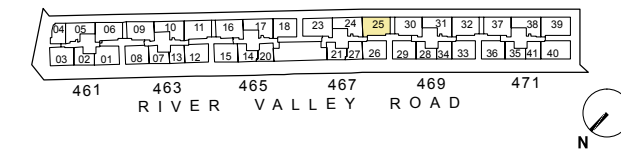
No.467: #07-25



LOWER



UPPER



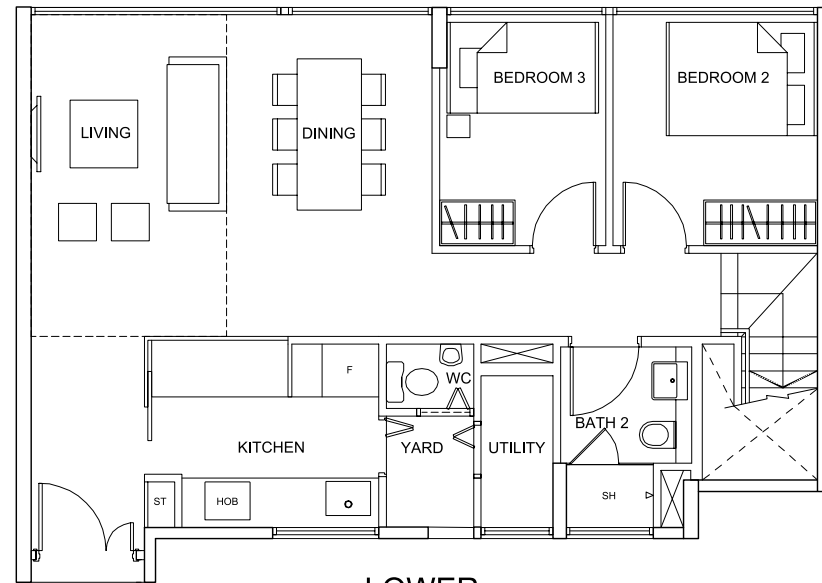
Type PH-D3

120 sq m (1,291 sq ft)

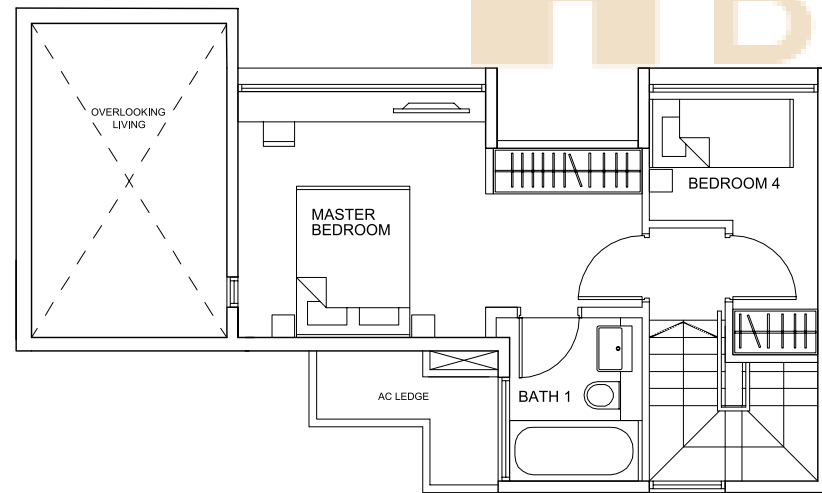
No.461: #07-06

No.463: #07-11

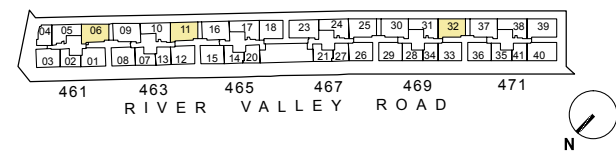
No.469: #07-32



LOWER



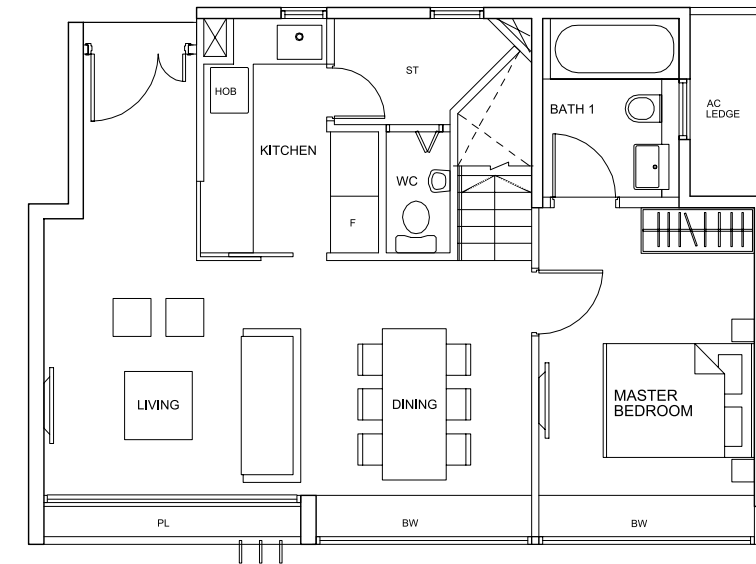
UPPER



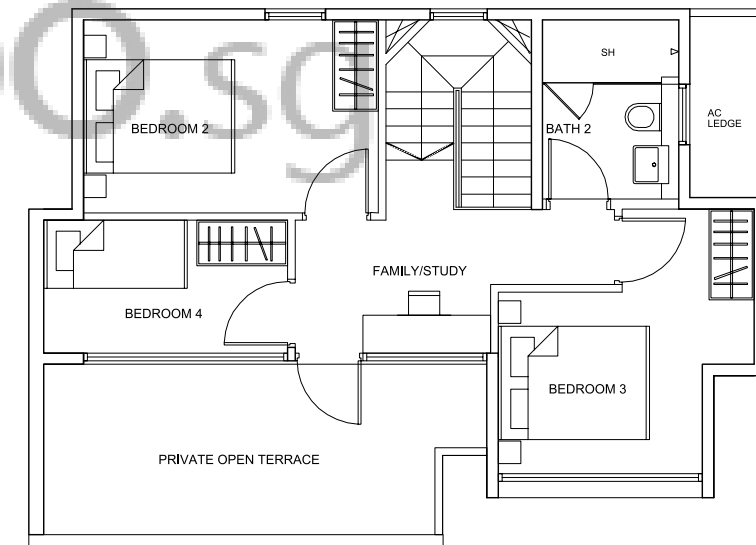
Type PH-D4s

125 sq m (1,345 sq ft)

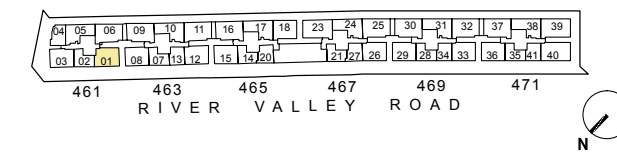
No.461: #07-01



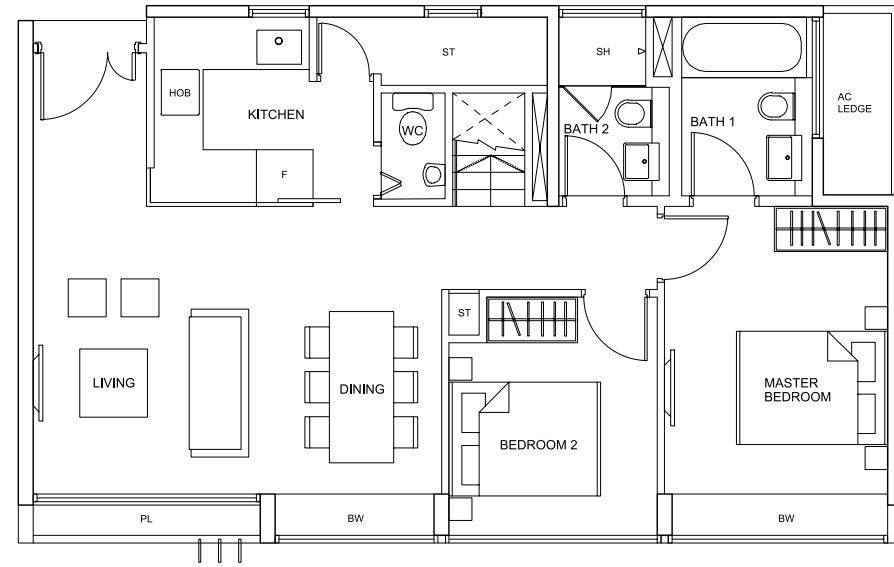
LOWER



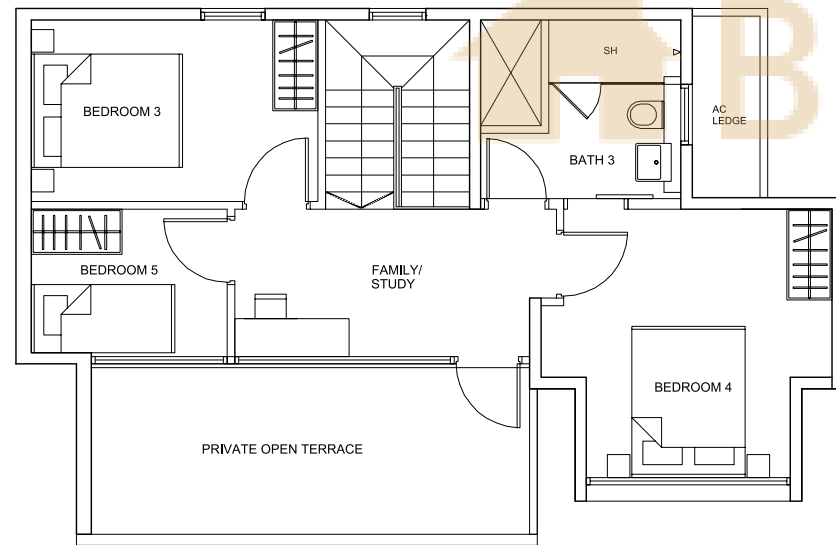
UPPER



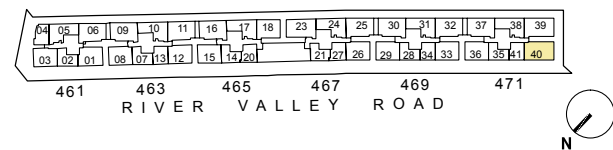
Type PH-E1s
 143 sq m (1,539 sq ft)
 No.471: #07-40



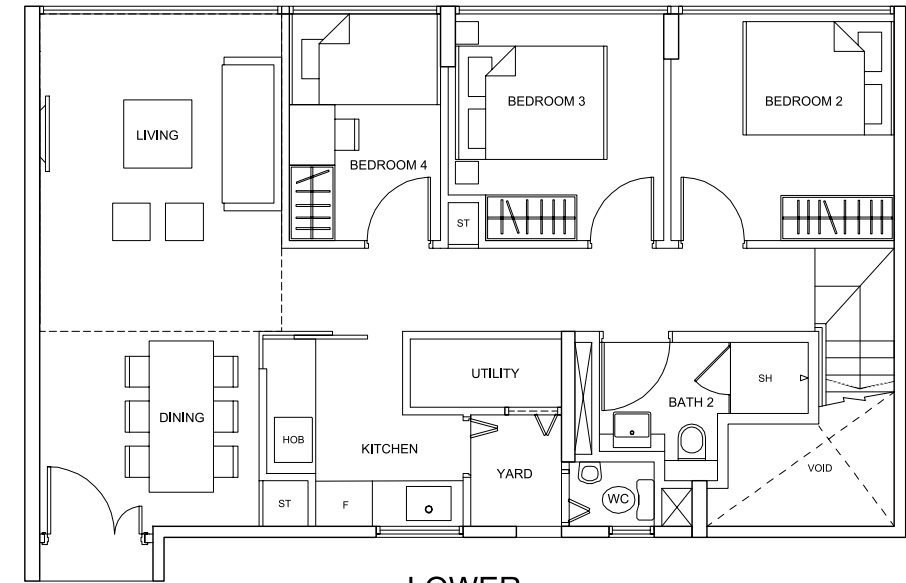
LOWER



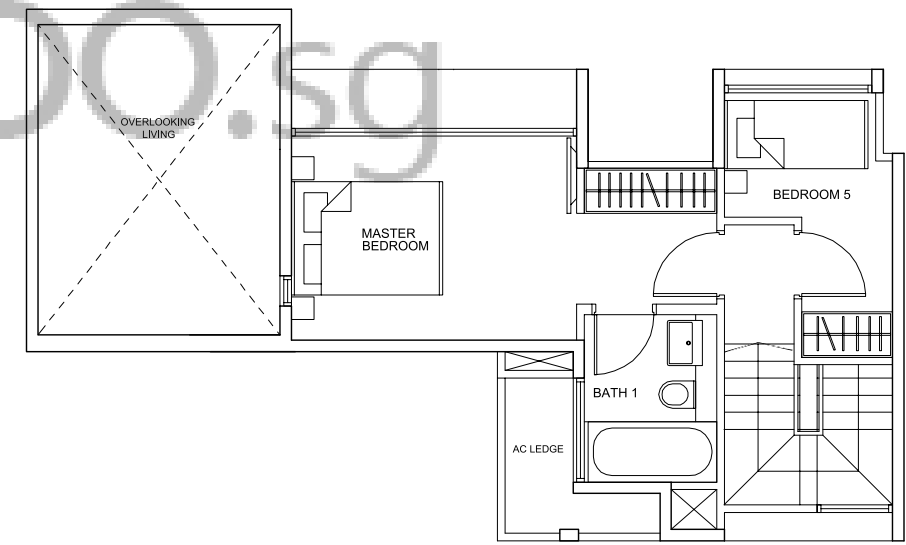
UPPER



Type PH-E2
 128 sq m (1,377 sq ft)
 No.471: #07-39



LOWER



UPPER

