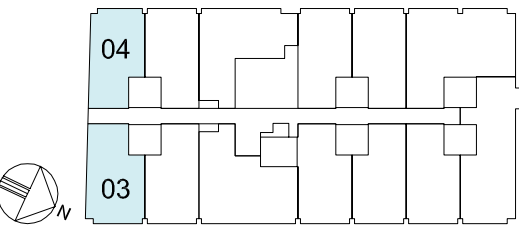
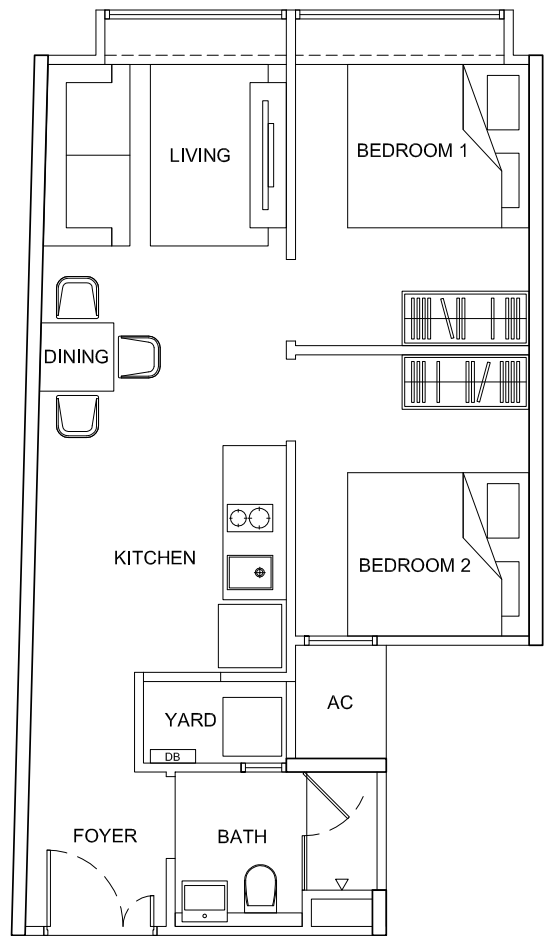
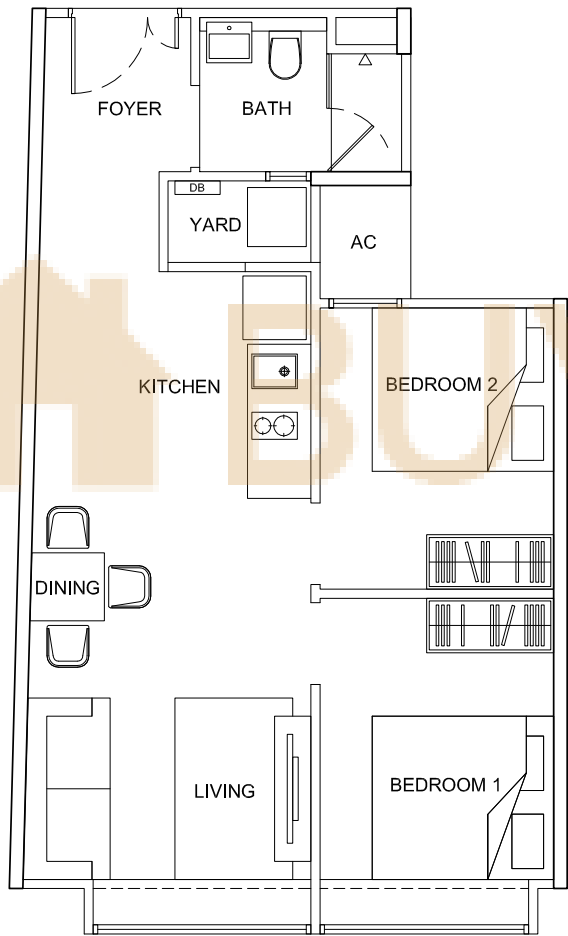


Type B1
2-Bedroom
50 sqm
#02-04 #03-04



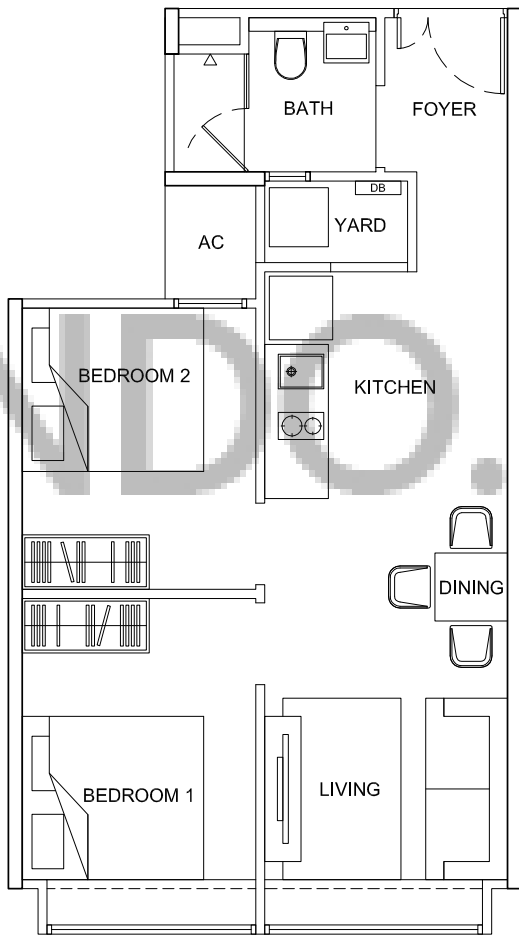
Plans are not to scale and subject to any amendment as may be approved by relevant authorities. All areas are approximate and are subject to final survey.

Type B2
2-Bedroom
53 sqm
#02-03 #03-03

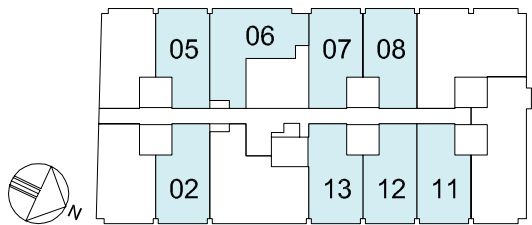
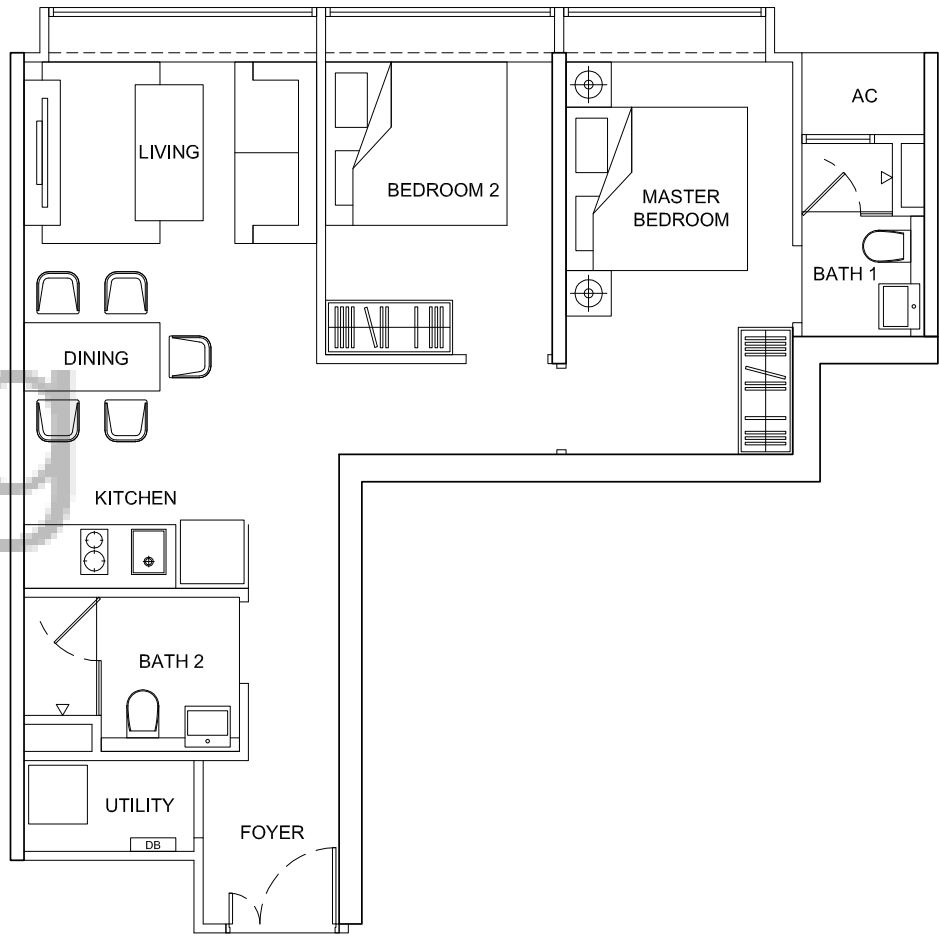


BUY CONDO.SG

Type B3
2-Bedroom
50 sqm
#02-02 #02-05 #02-07 #02-08 #02-11 #02-12 #02-13
#03-02 #03-05 #03-07 #03-08 #03-11 #03-12 #03-13

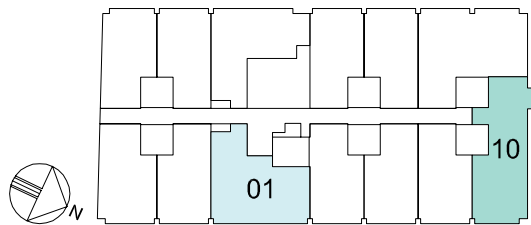
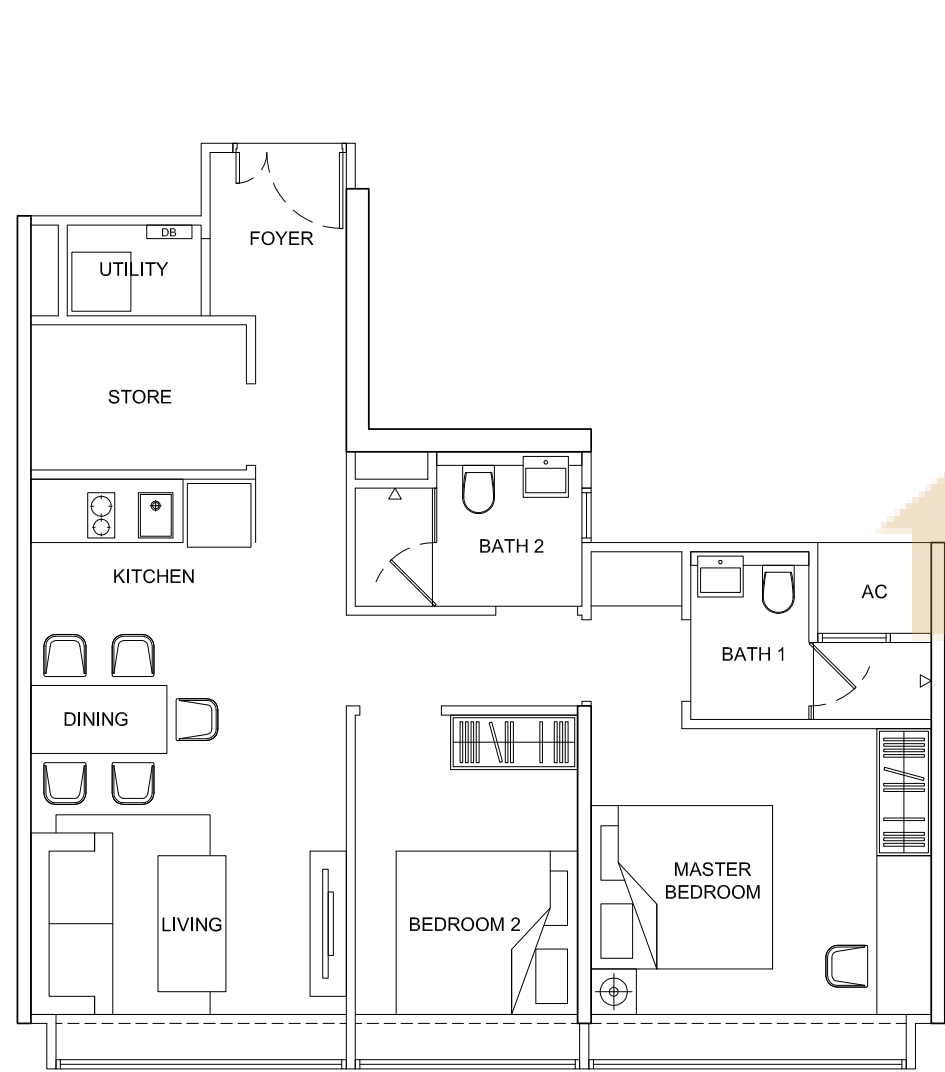


Type B4
2-Bedroom
64 sqm
#02-06 #03-06



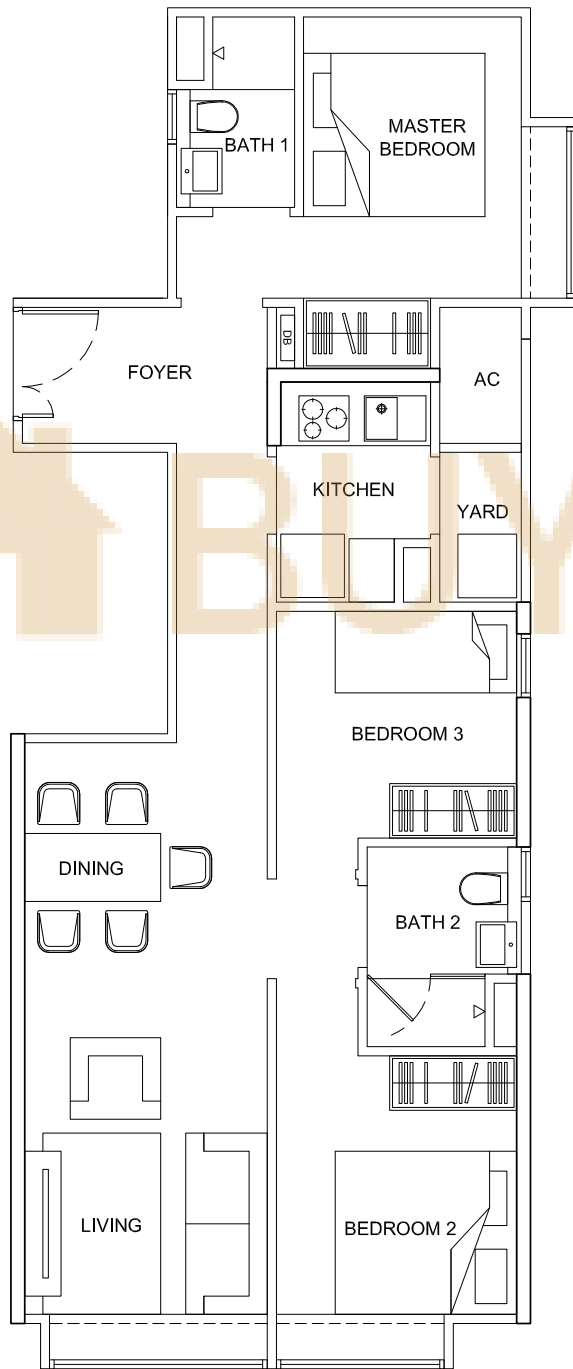
Plans are not to scale and subject to any amendment as may be approved by relevant authorities. All areas are approximate and are subject to final survey.

Type B5
2-Bedroom
74 sqm
#02-01 #03-01

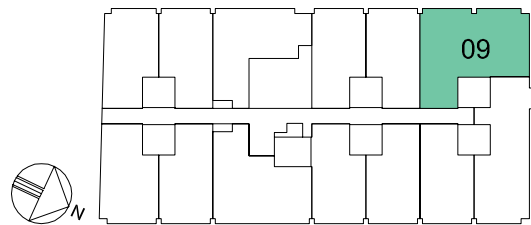
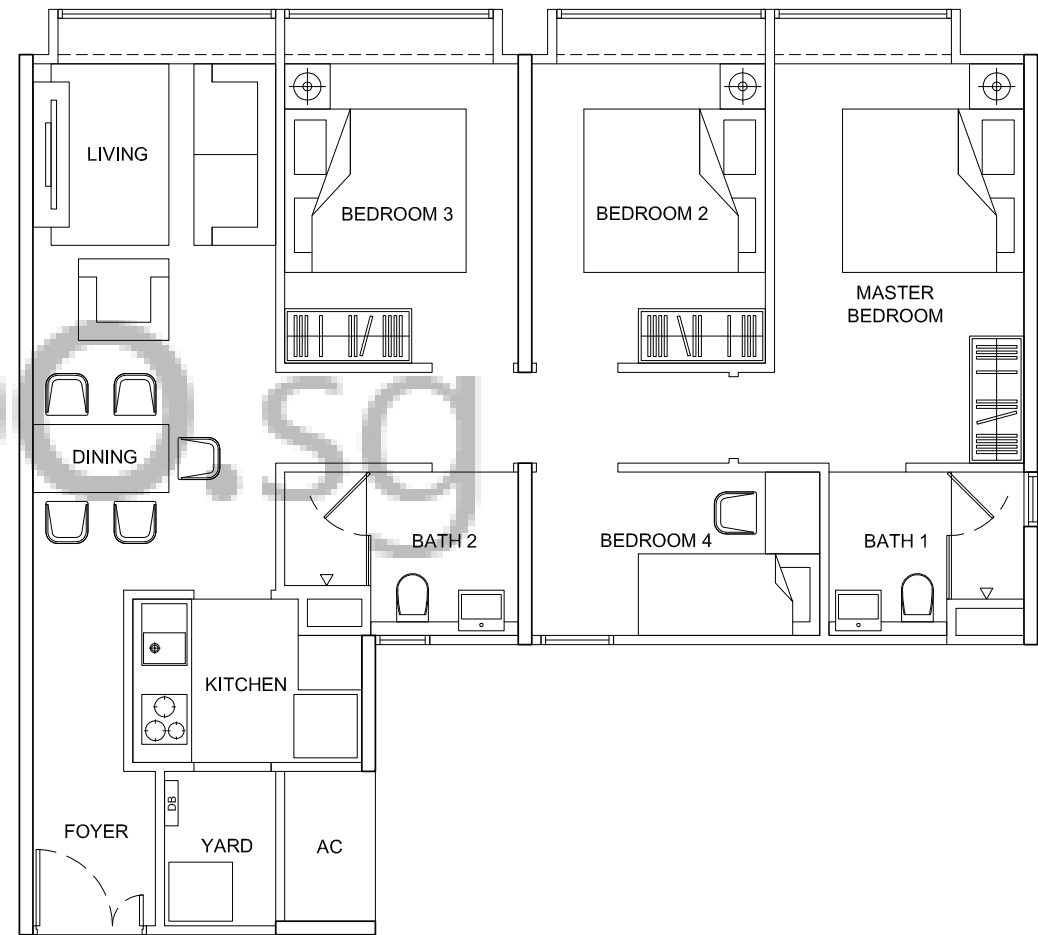


Plans are not to scale and subject to any amendment as may be approved by relevant authorities. All areas are approximate and are subject to final survey.

Type C1
3-Bedroom
72 sqm
#02-10 #03-10



Type D1
4-Bedroom
87 sqm
#02-09 #03-09



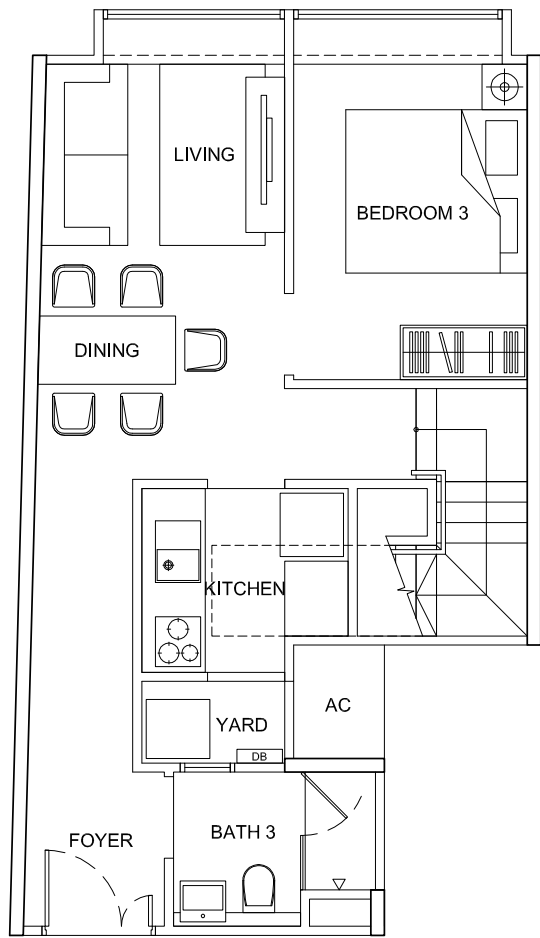
Plans are not to scale and subject to any amendment as may be approved by relevant authorities. All areas are approximate and are subject to final survey.

Type PH1

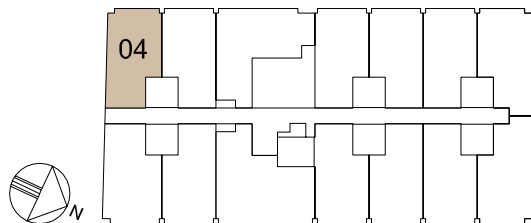
3-Bedroom Penthouse

89 sqm

#04-04



Lower Level



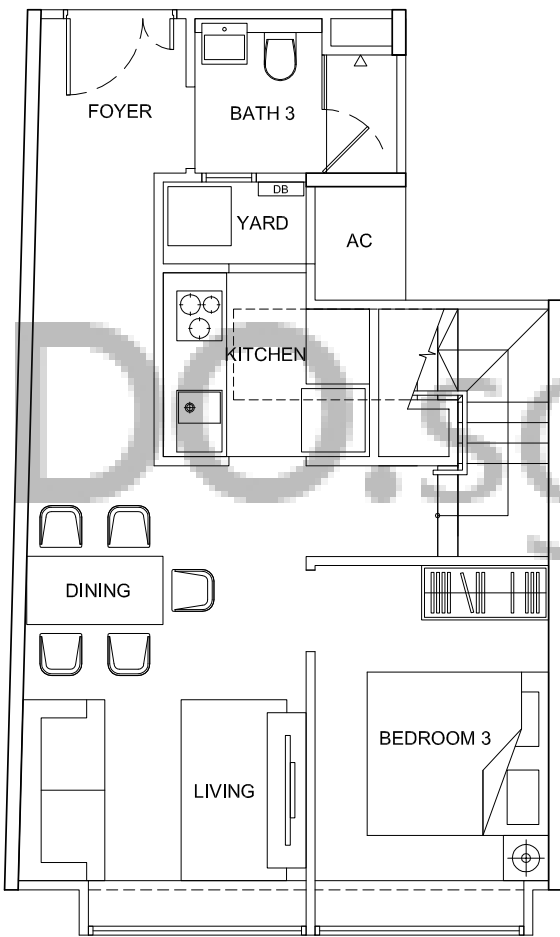
Plans are not to scale and subject to any amendment as may be approved by relevant authorities. All areas are approximate and are subject to final survey.

Type PH2

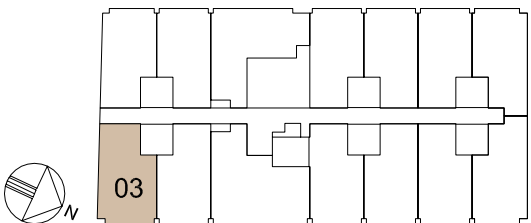
3-Bedroom Penthouse

107 sqm

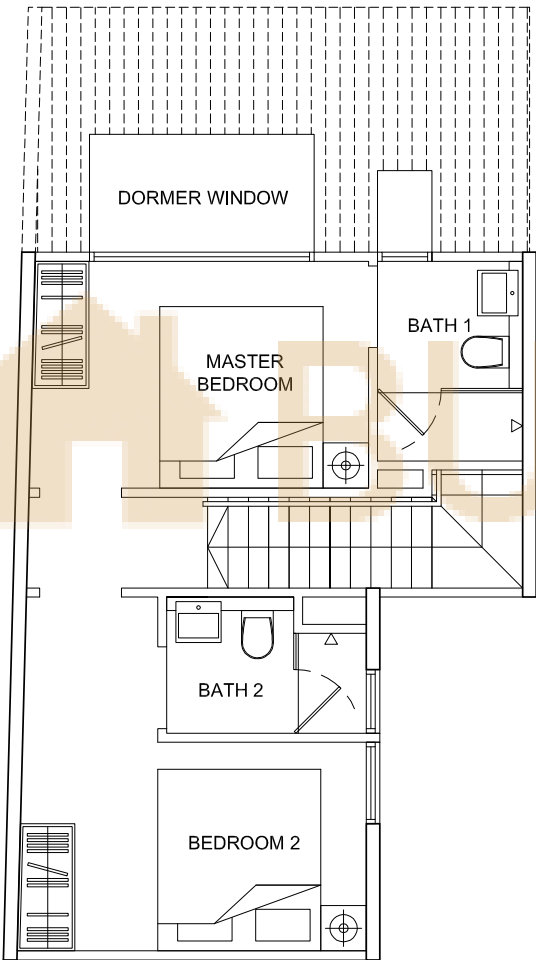
#04-03



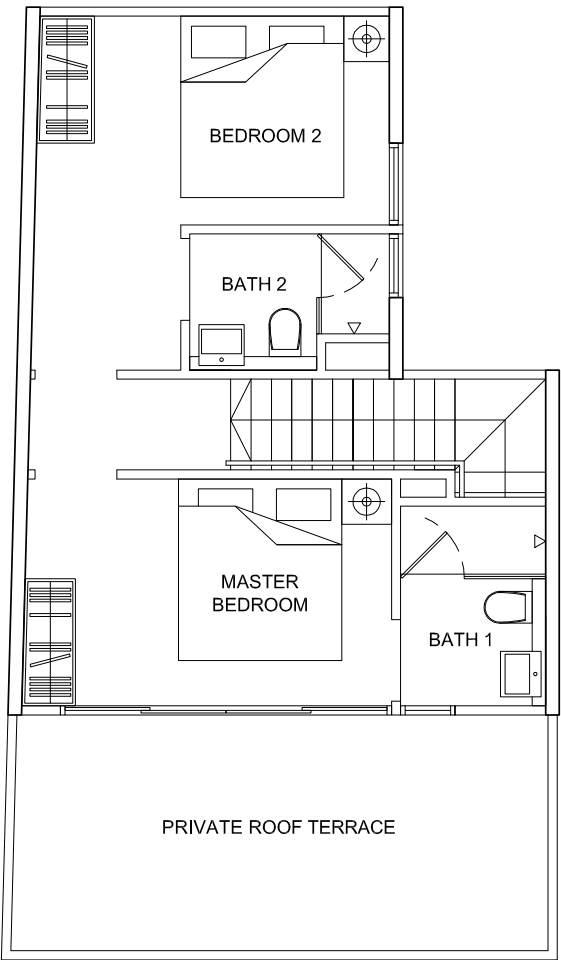
Lower Level



Plans are not to scale and subject to any amendment as may be approved by relevant authorities. All areas are approximate and are subject to final survey.



Upper Level



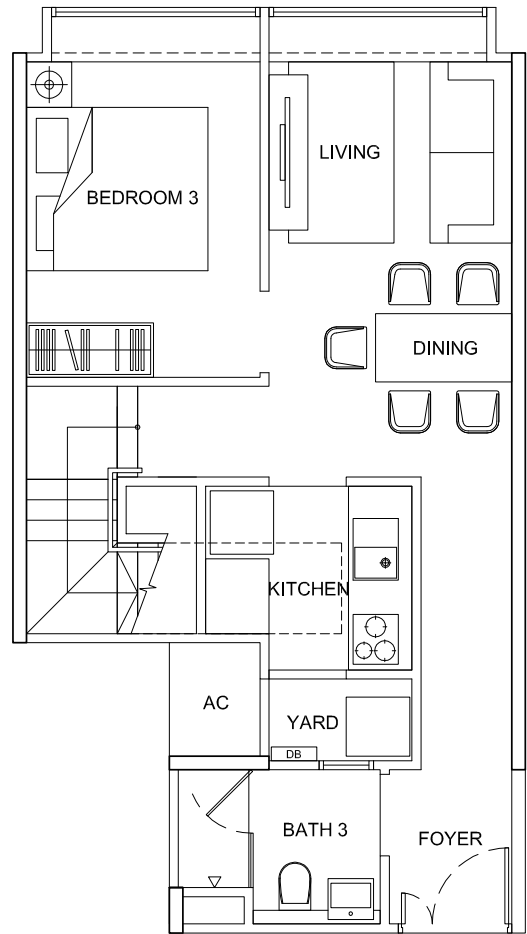
Upper Level

Type PH3

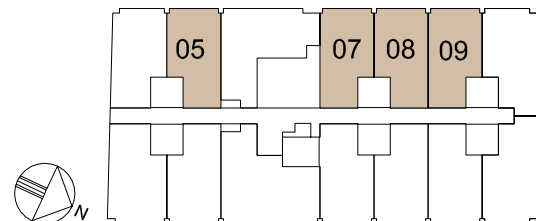
3-Bedroom Penthouse

88 sqm

#04-05 #04-07 #04-08 #04-09



Lower Level



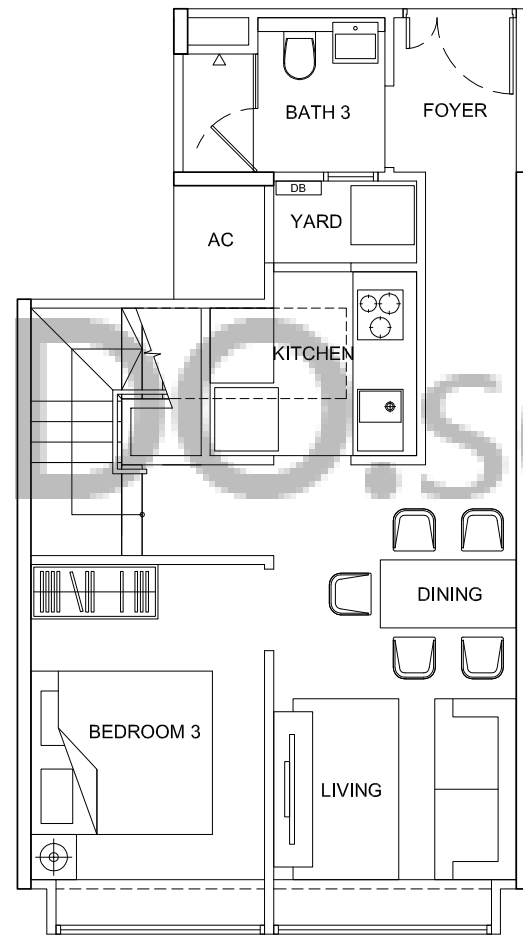
Plans are not to scale and subject to any amendment as may be approved by relevant authorities. All areas are approximate and are subject to final survey.

Type PH4

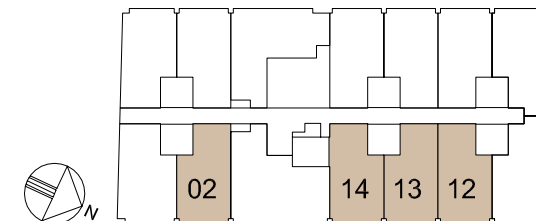
3-Bedroom Penthouse

100 sqm

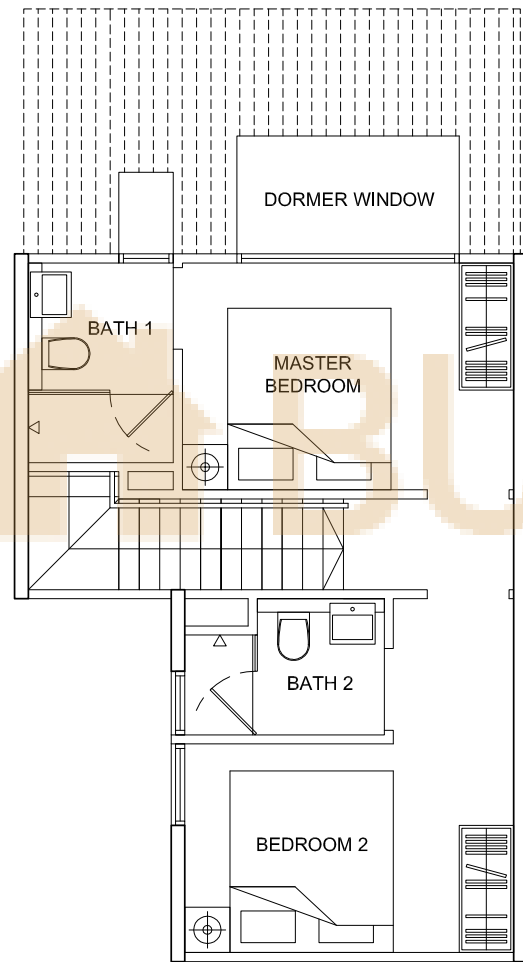
#04-02 #04-12 #04-13 #04-14



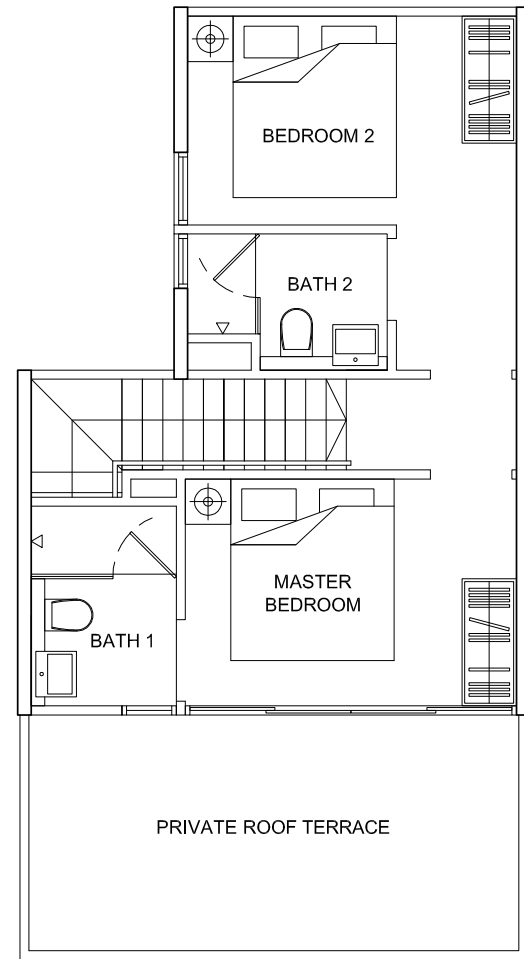
Lower Level



Plans are not to scale and subject to any amendment as may be approved by relevant authorities. All areas are approximate and are subject to final survey.



Upper Level



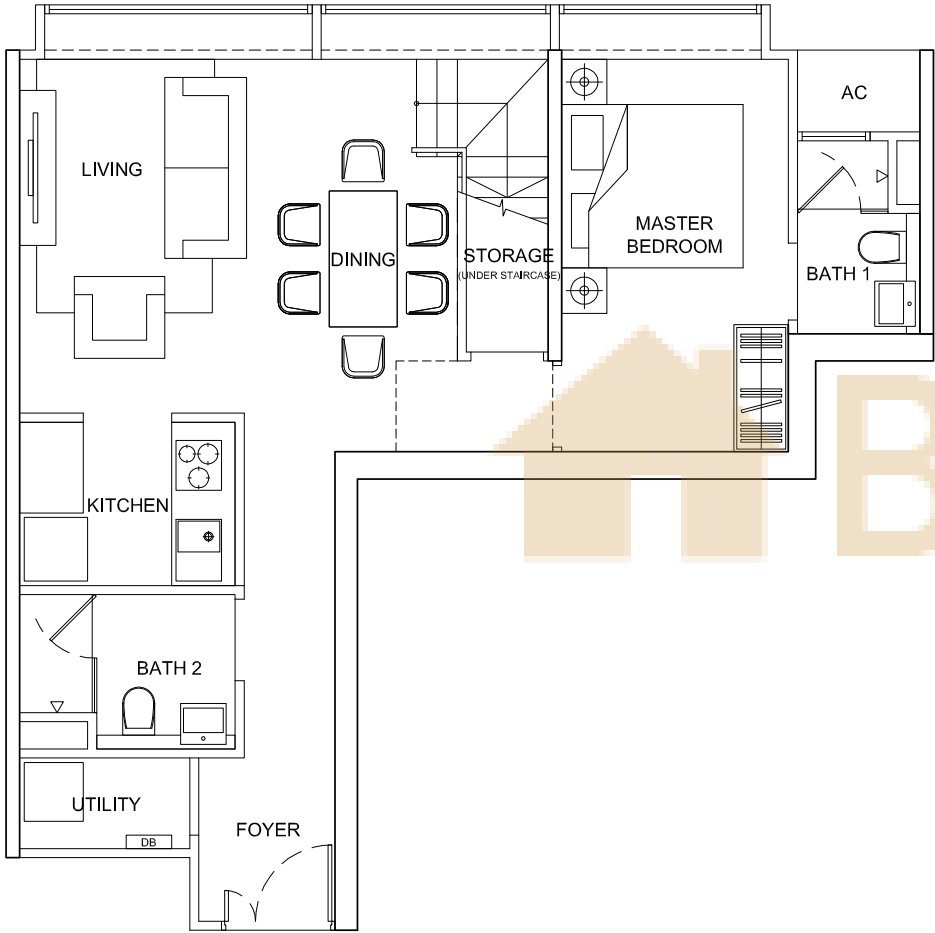
Upper Level

Type PH5

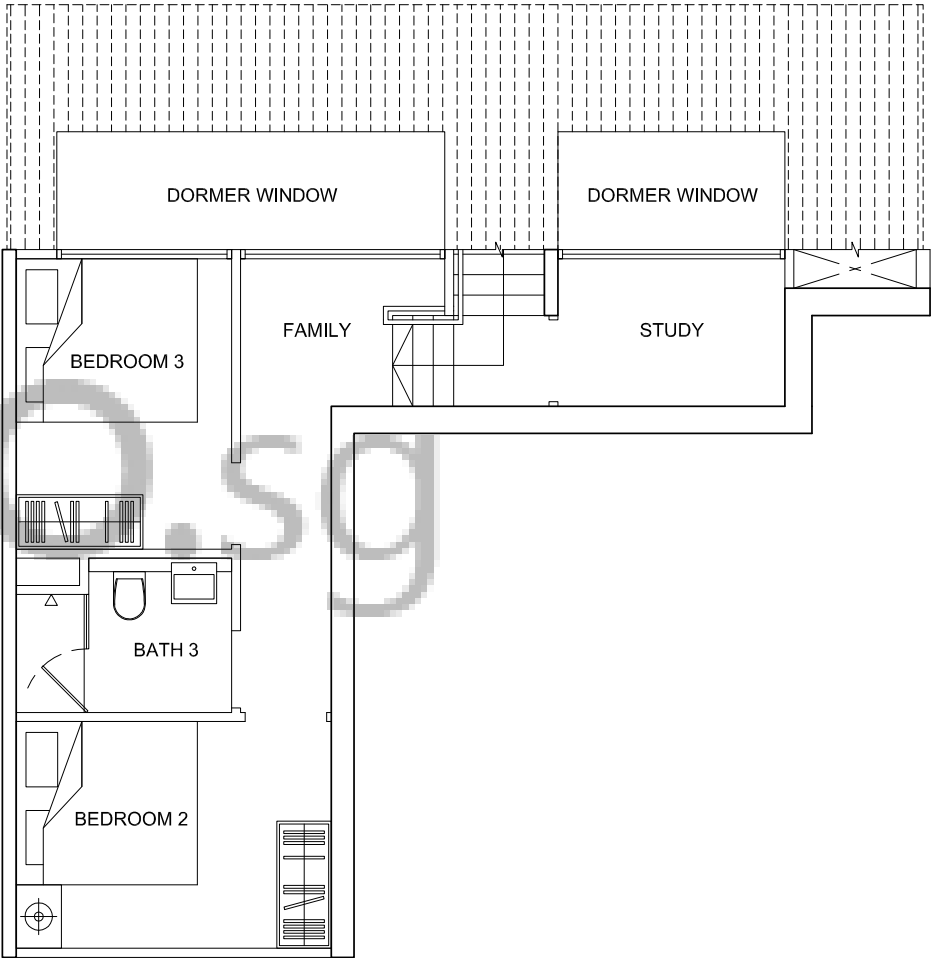
3-Bedroom Penthouse

110 sqm

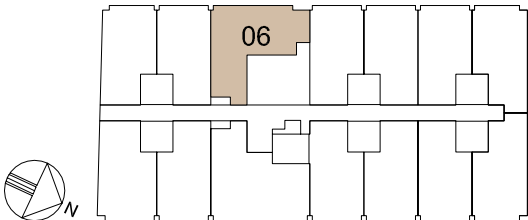
#04-06



Lower Level



Upper Level



Plans are not to scale and subject to any amendment as may be approved by relevant authorities. All areas are approximate and are subject to final survey.

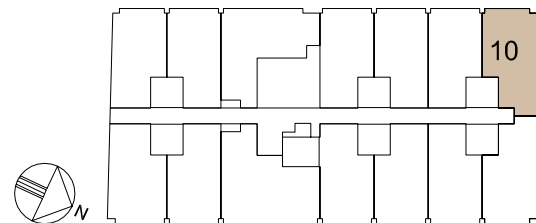
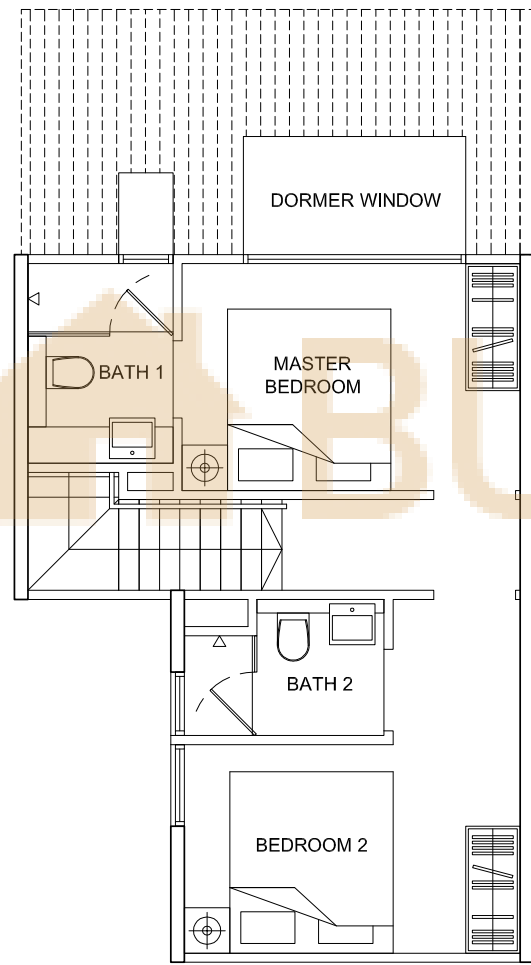
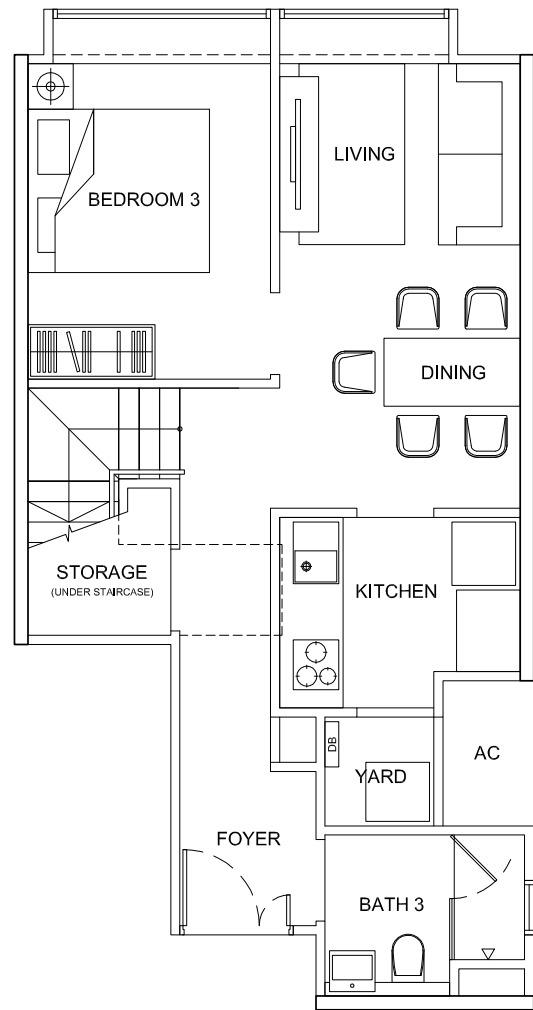
Plans are not to scale and subject to any amendment as may be approved by relevant authorities. All areas are approximate and are subject to final survey.

Type PH6

3-Bedroom Penthouse

91 sqm

#04-10



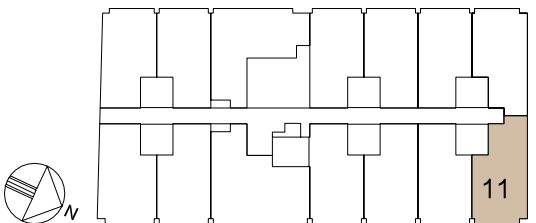
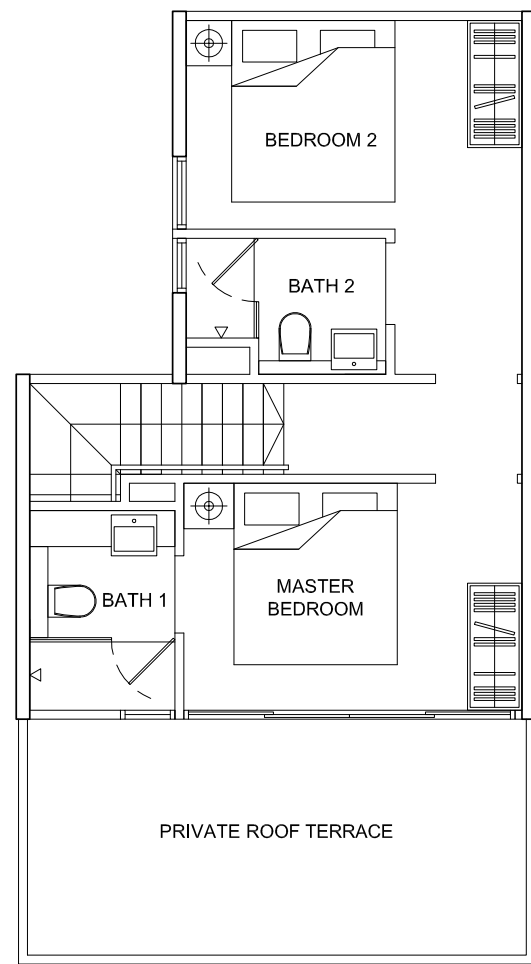
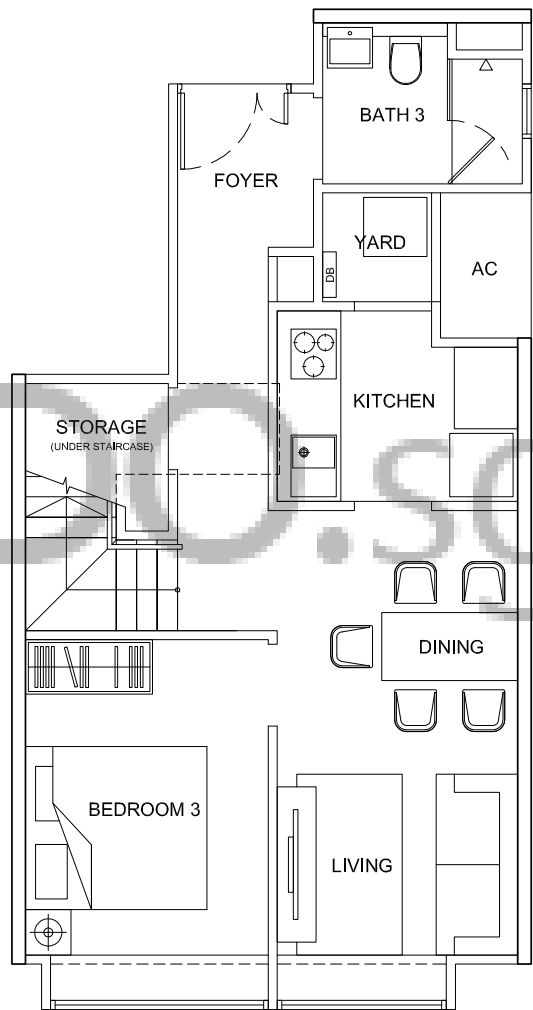
Plans are not to scale and subject to any amendment as may be approved by relevant authorities. All areas are approximate and are subject to final survey.

Type PH7

3-Bedroom Penthouse

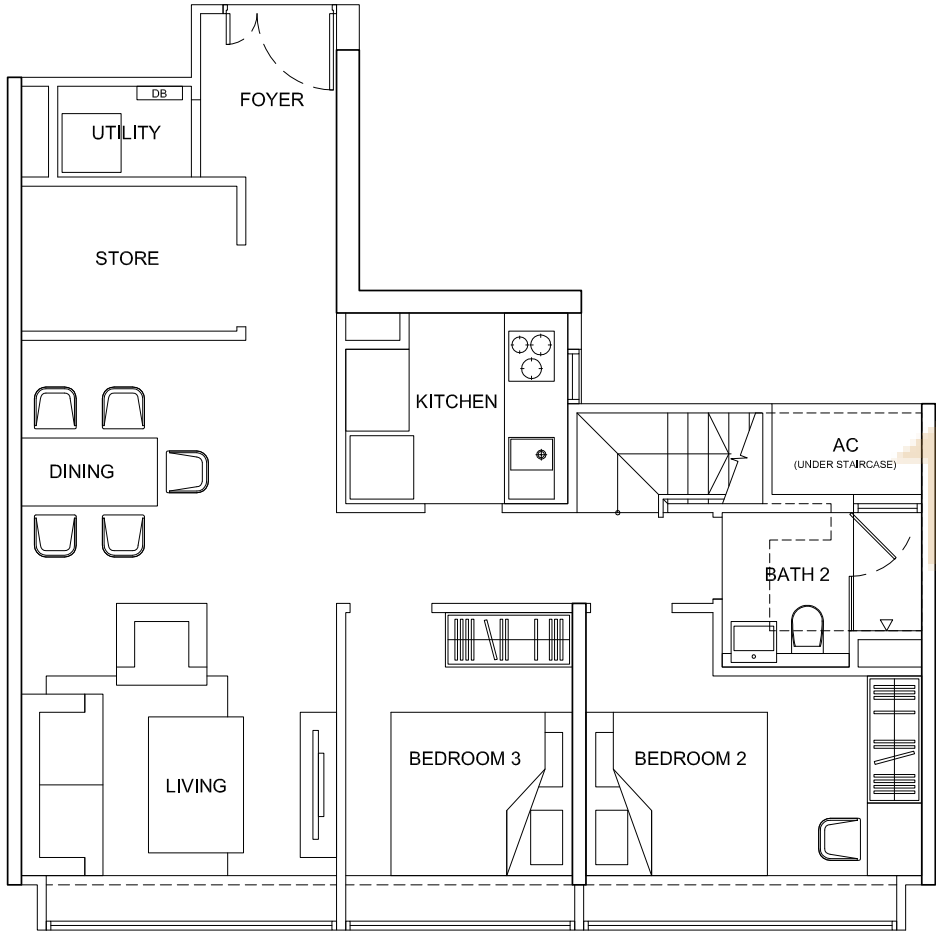
103 sqm

#04-11

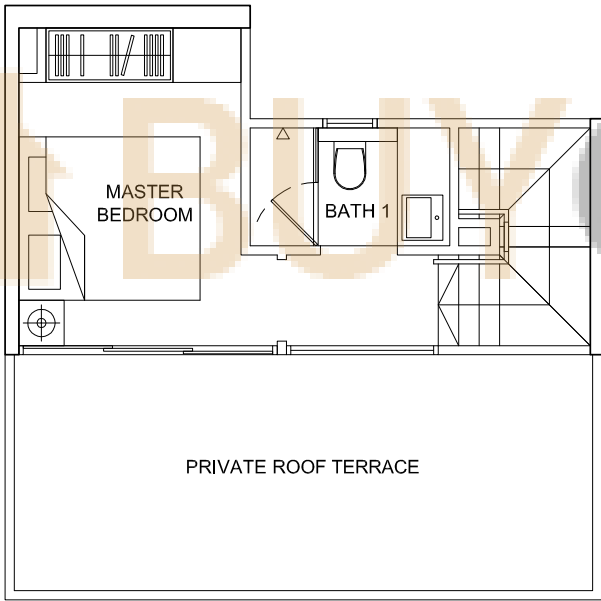


Plans are not to scale and subject to any amendment as may be approved by relevant authorities. All areas are approximate and are subject to final survey.

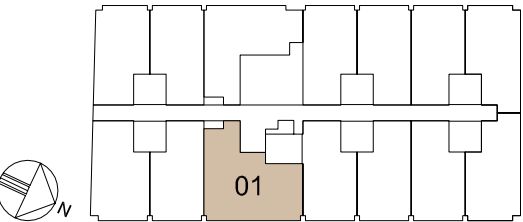
Type PH8
3-Bedroom Penthouse
110 sqm
#04-01



Lower Level



Upper Level



Plans are not to scale and subject to any amendment as may be approved by relevant authorities. All areas are approximate and are subject to final survey.

COMMERCIAL PLAN

(Basement 1)

SHOPS

BASEMENT 1



Artist's Impression

COMMERCIAL PLAN

(Level 1)

RESTAURANT

LEVEL 1



Artist's Impression