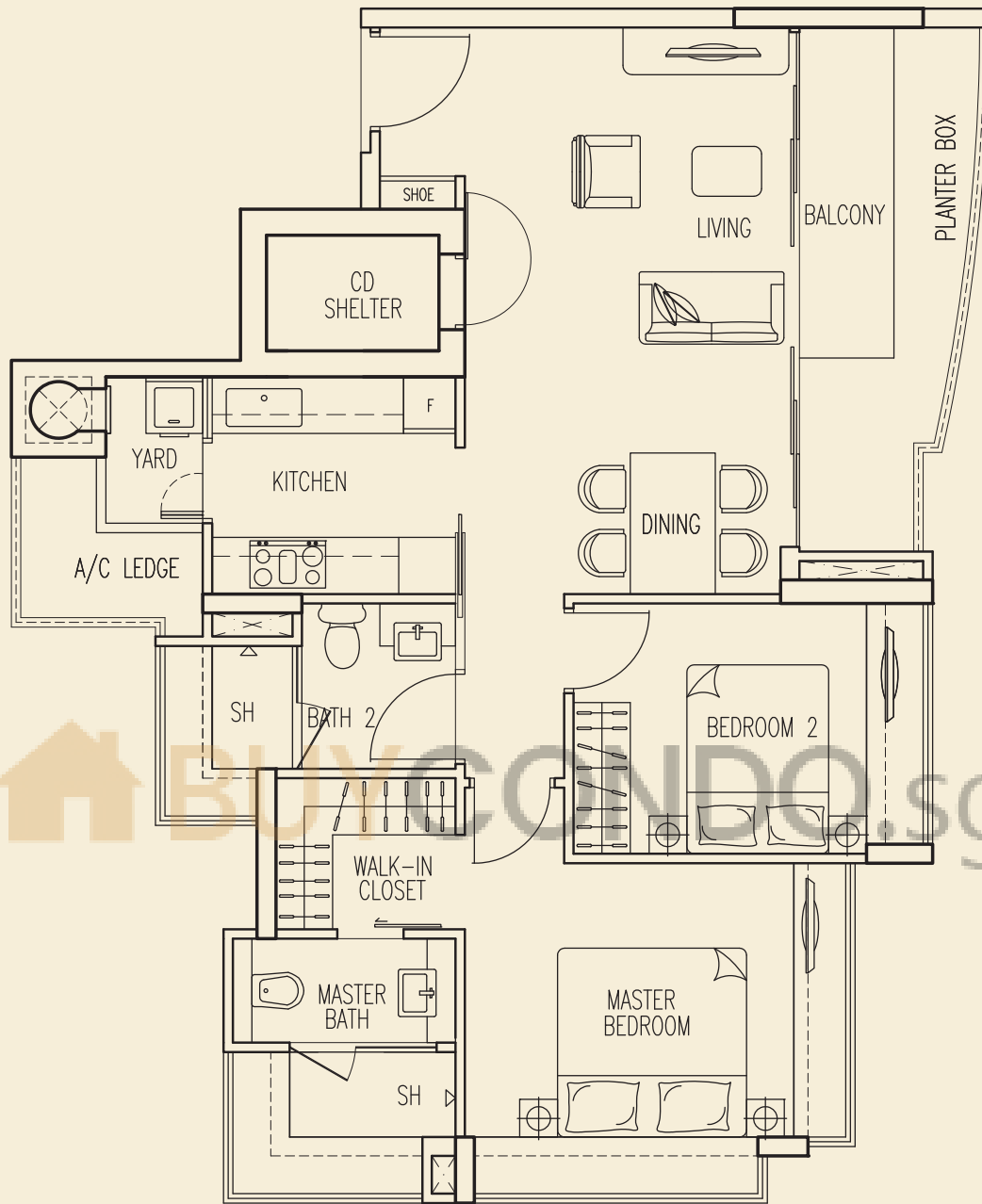
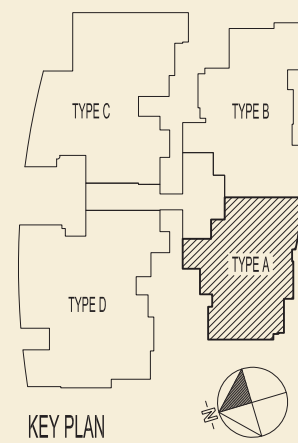


FLOOR PLAN



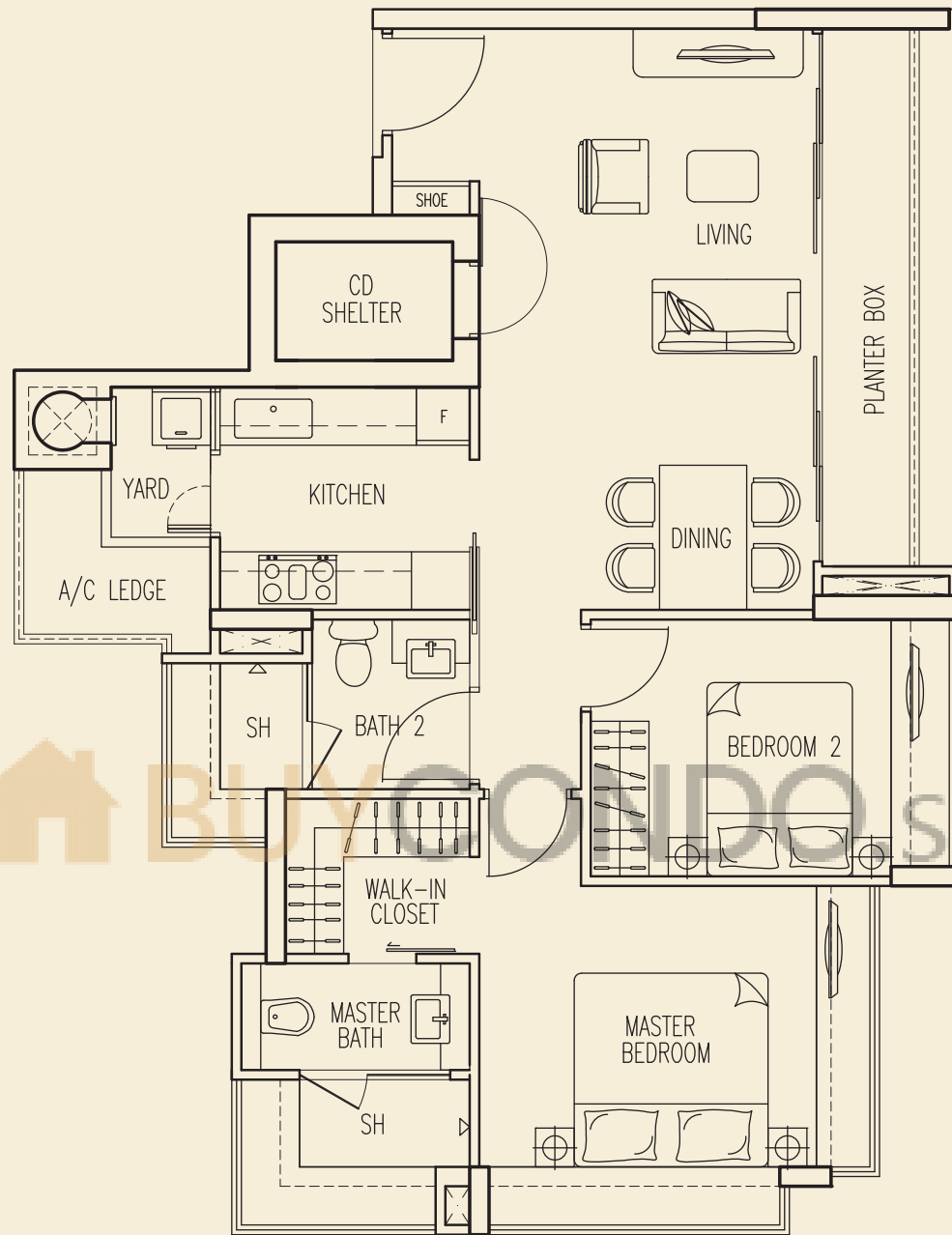
2 - Bedroom Type A (93 sq m / 1001 sq ft)

- | | |
|--------|--------|
| #07-04 | #11-04 |
| #08-04 | #12-04 |
| #09-04 | #13-04 |
| #10-04 | #14-04 |



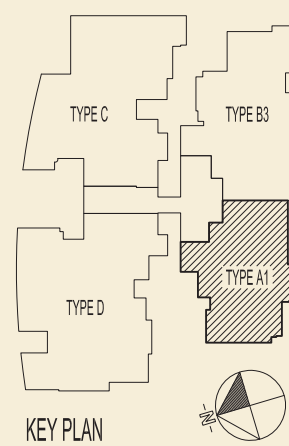
All plans are subject to change as may be approved by the relevant authority. Areas are approximate measurement and subject to final survey. Plans are not to scale.

FLOOR PLAN



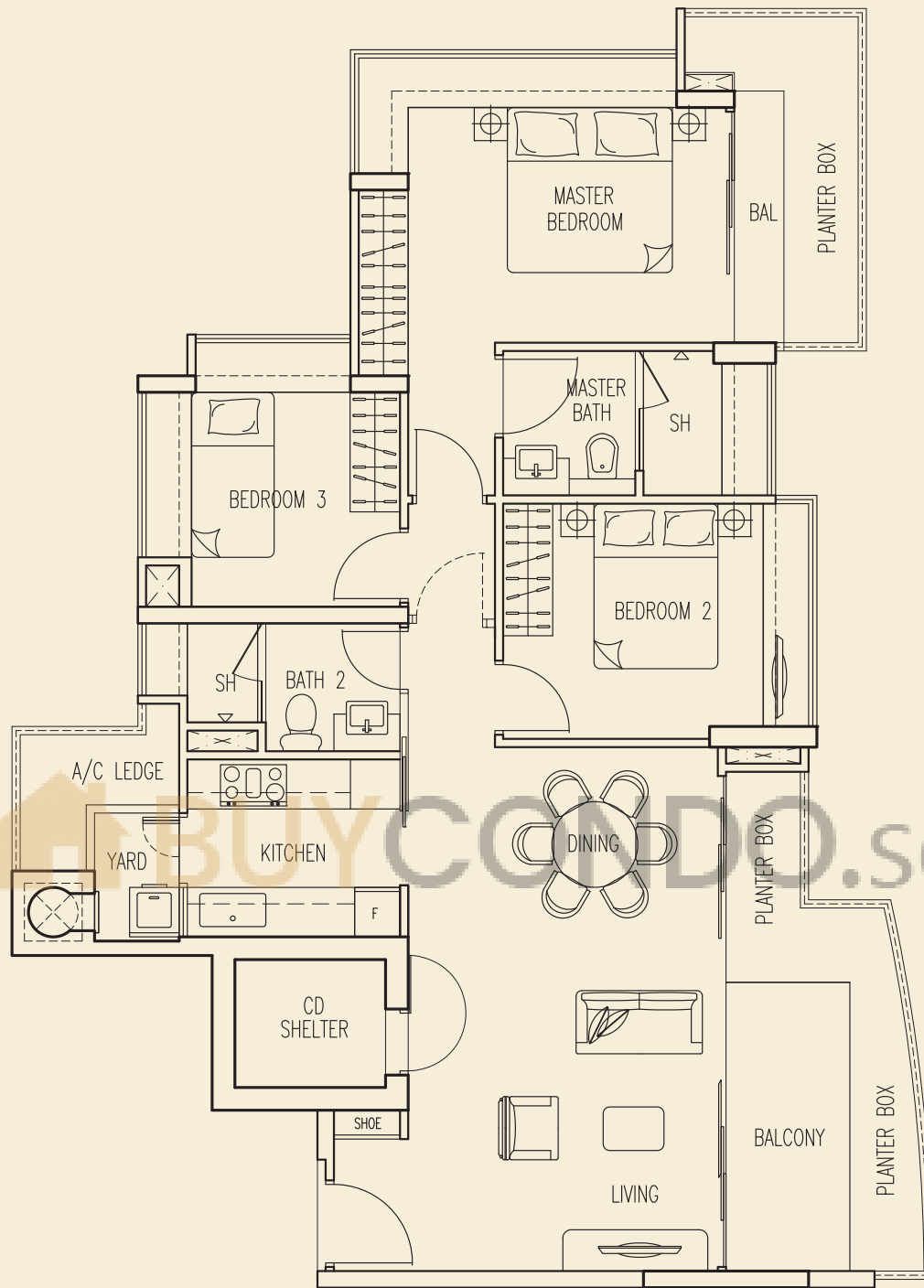
2 - Bedroom Type A1 (89 sq m / 958 sq ft)

- #03-04
- #04-04
- #05-04
- #06-04



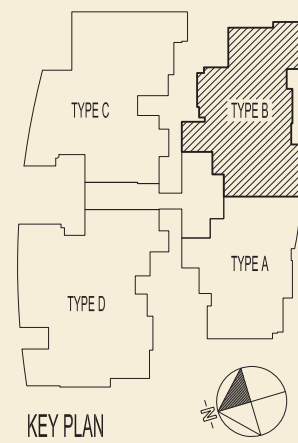
All plans are subject to change as may be approved by the relevant authority. Areas are approximate measurement and subject to final survey. Plans are not to scale.

FLOOR PLAN



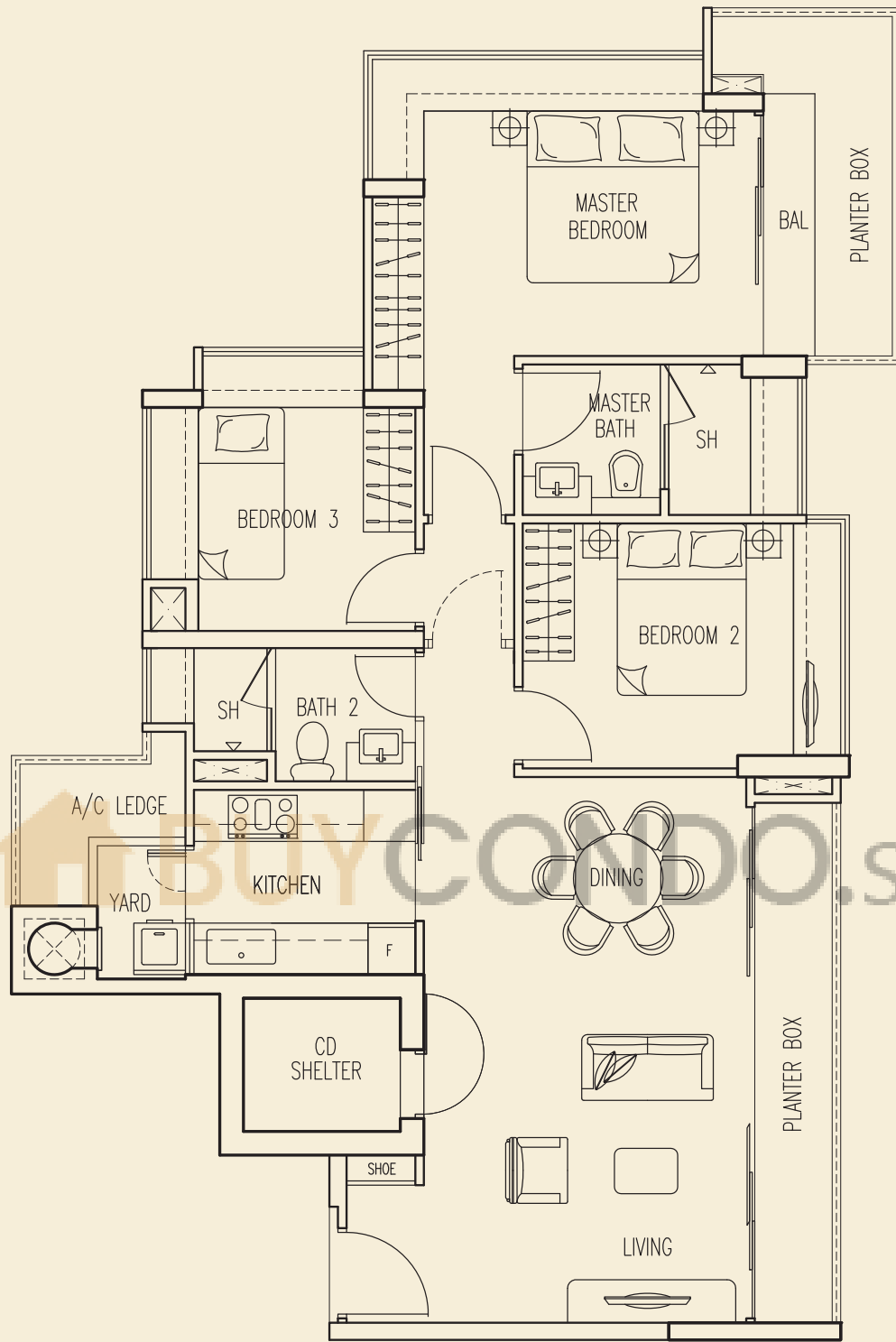
3 - Bedroom Type B (115 sq m / 1238 sq ft)

- | | |
|--------|--------|
| #07-03 | #11-03 |
| #08-03 | #12-03 |
| #09-03 | #13-03 |
| #10-03 | #14-03 |



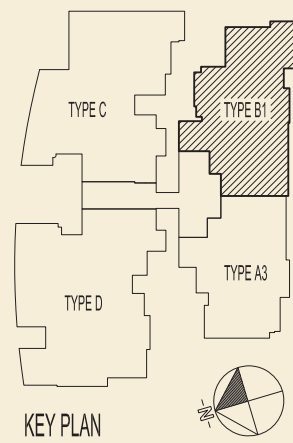
All plans are subject to change as may be approved by the relevant authority. Areas are approximate measurement and subject to final survey. Plans are not to scale.

FLOOR PLAN



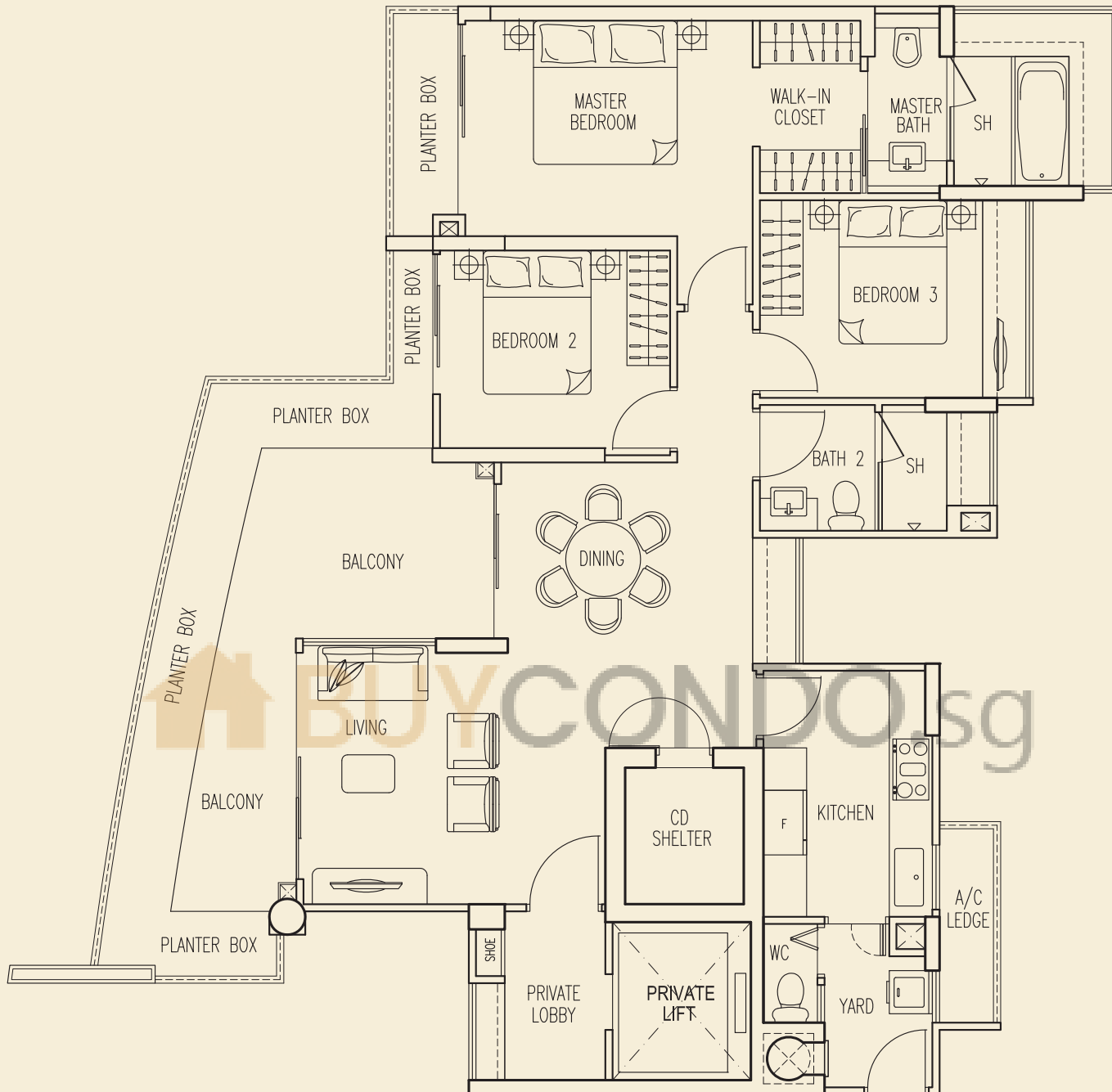
3 - Bedroom Type B1 (109 sq m / 1173 sq ft)

- #03-03
- #04-03
- #05-03
- #06-03



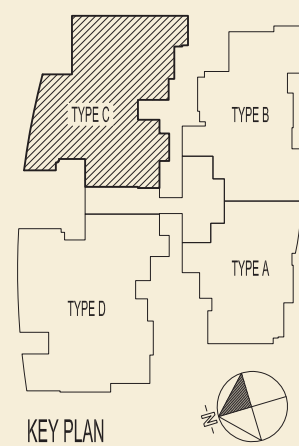
All plans are subject to change as may be approved by the relevant authority. Areas are approximate measurement and subject to final survey. Plans are not to scale.

FLOOR PLAN



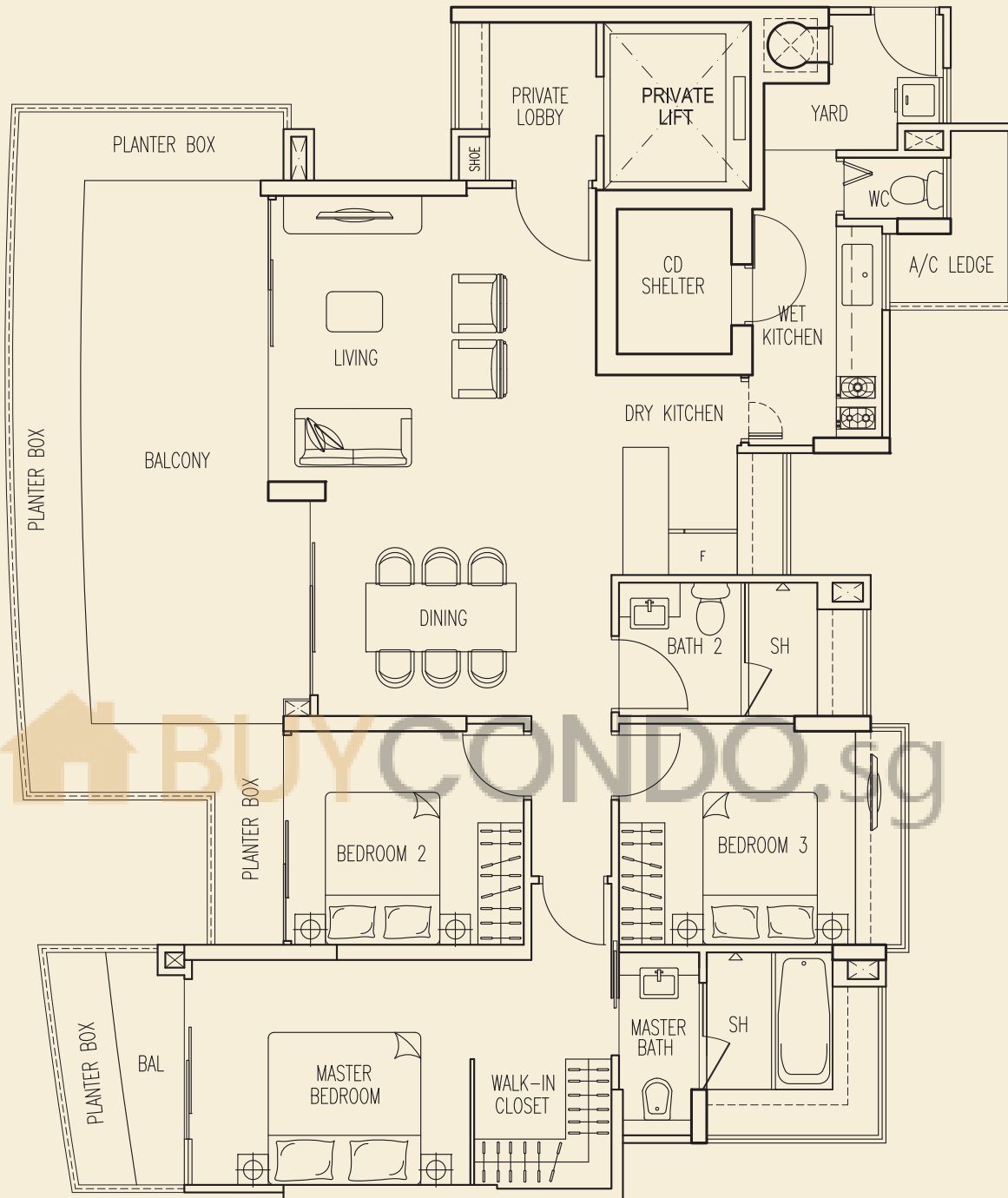
3 - Bedroom Type C (143 sq m / 1539 sq ft)

- | | | |
|--------|--------|--------|
| #03-02 | #07-02 | #11-02 |
| #04-02 | #08-02 | #12-02 |
| #05-02 | #09-02 | #13-02 |
| #06-02 | #10-02 | #14-02 |



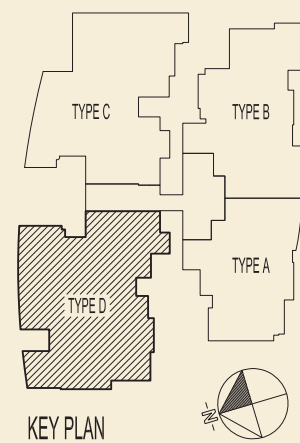
All plans are subject to change as may be approved by the relevant authority. Areas are approximate measurement and subject to final survey. Plans are not to scale.

FLOOR PLAN



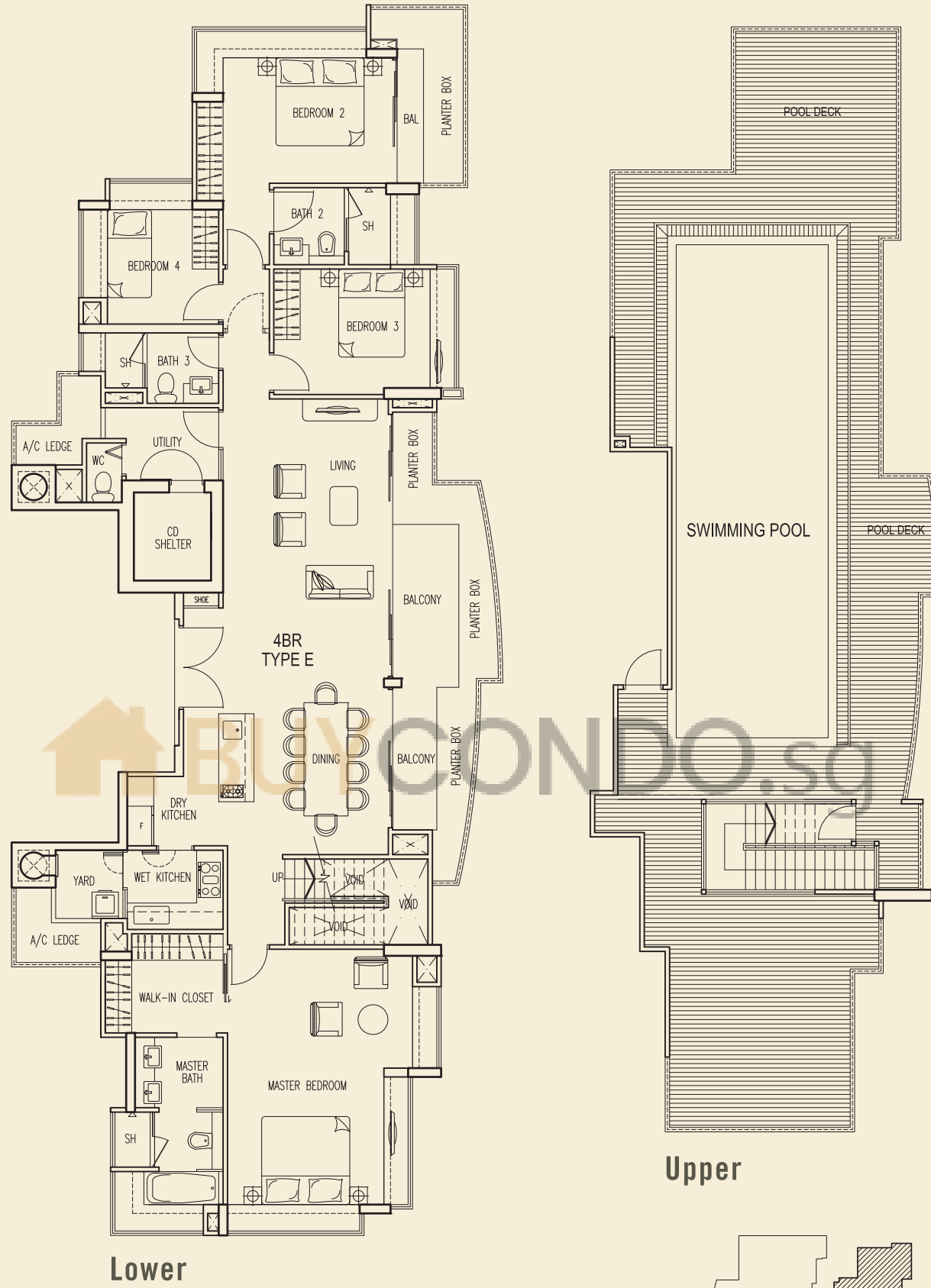
3 - Bedroom Type D (156 sq m / 1679 sq ft)

- | | | | |
|--------|--------|--------|--------|
| #03-01 | #07-01 | #11-01 | #15-01 |
| #04-01 | #08-01 | #12-01 | |
| #05-01 | #09-01 | #13-01 | |
| #06-01 | #10-01 | #14-01 | |

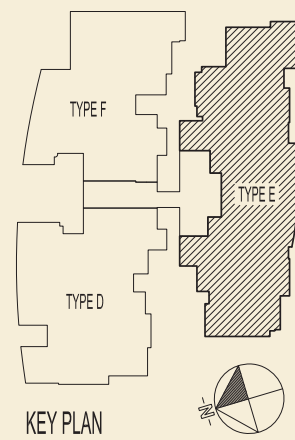


All plans are subject to change as may be approved by the relevant authority. Areas are approximate measurement and subject to final survey. Plans are not to scale.

FLOOR PLAN

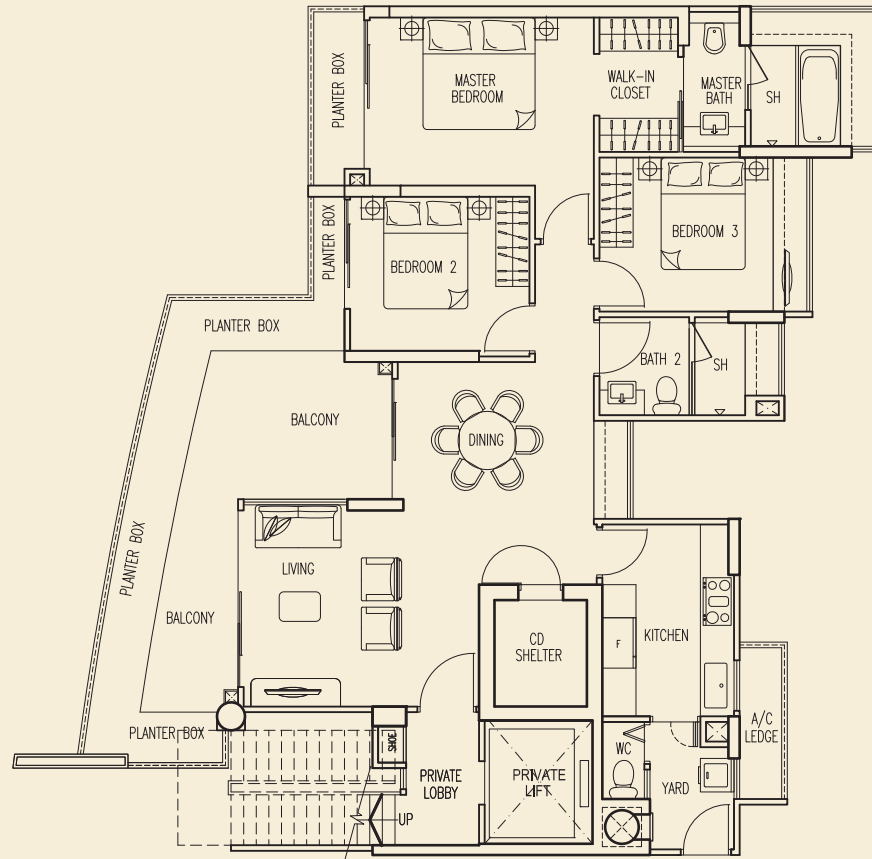


Penthouse
Type E (347 sq m / 3735 sq ft)
Incl. of roof terrace / swimming pool / pool deck
#15-03

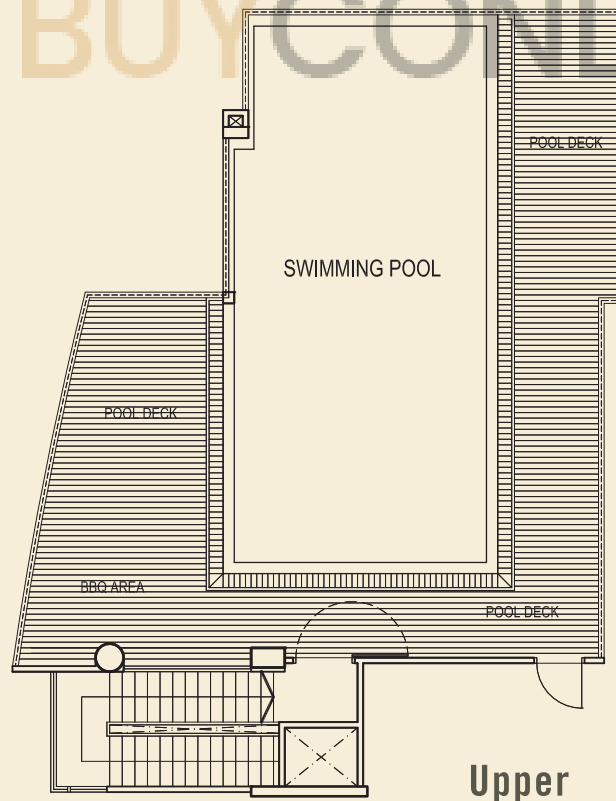
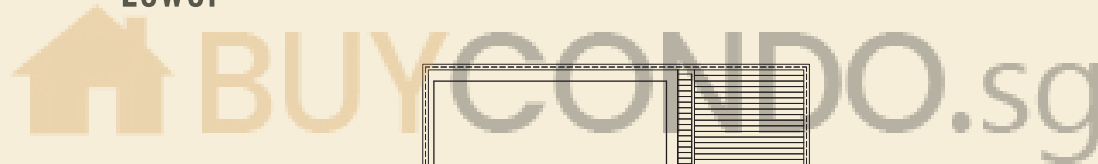


All plans are subject to change as may be approved by the relevant authority. Areas are approximate measurement and subject to final survey. Plans are not to scale.

FLOOR PLAN



Lower

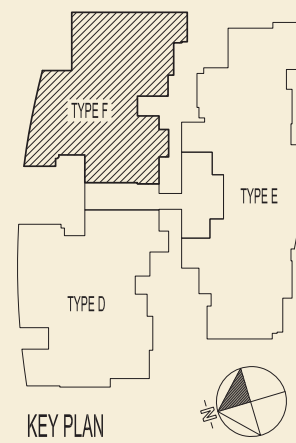


Upper

Penthouse Type F (254 sq m / 2734 sq ft)

Incl. of roof terrace / swimming pool / pool deck / strata void

#15-02



All plans are subject to change as may be approved by the relevant authority. Areas are approximate measurement and subject to final survey. Plans are not to scale.