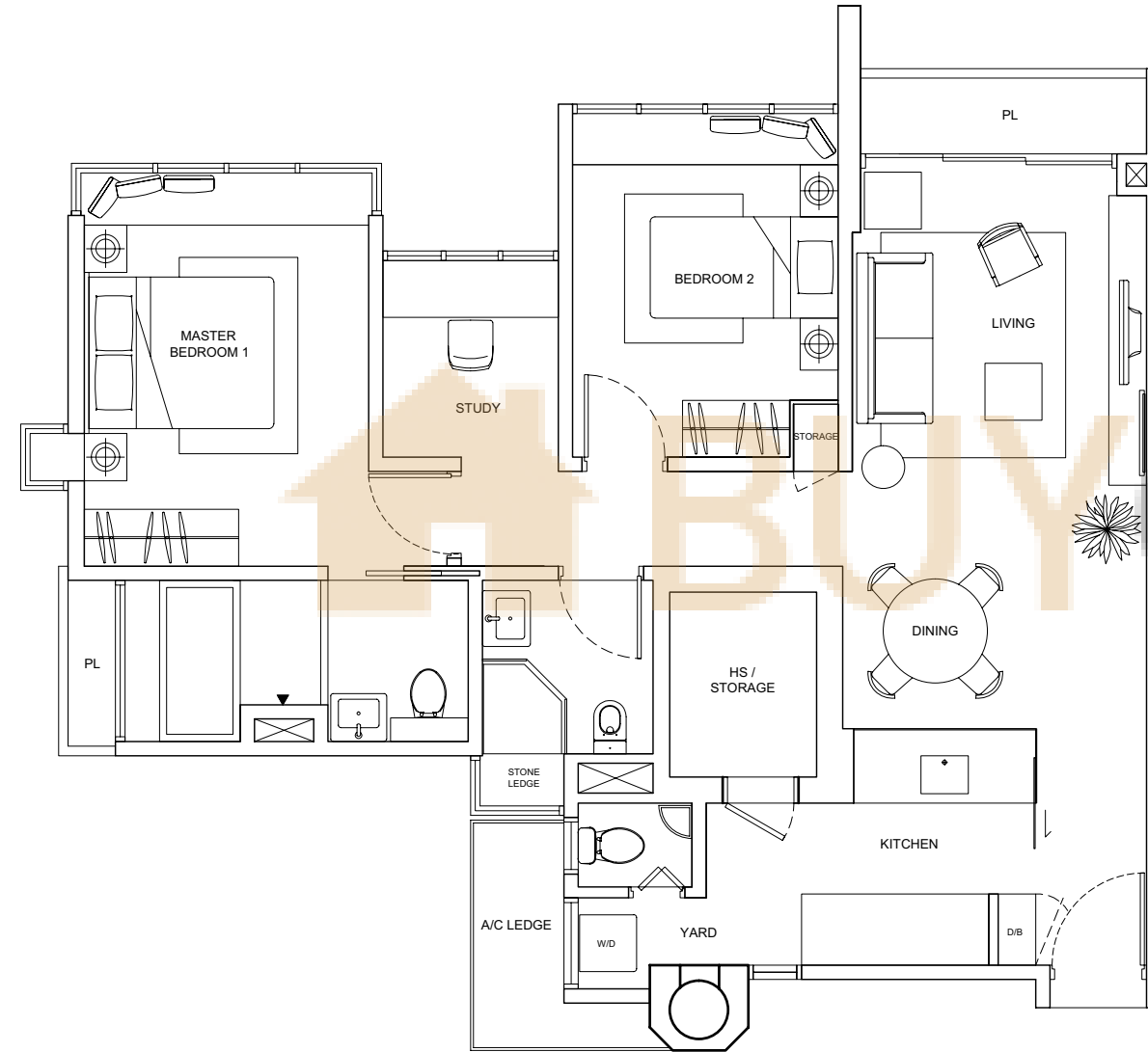


2-BEDROOM APARTMENT WITH STUDY

TYPE B1S

Unit Blk 925 #02-12 to #09-12
Unit Blk 937 #02-35 to #09-35
Area 990sqm

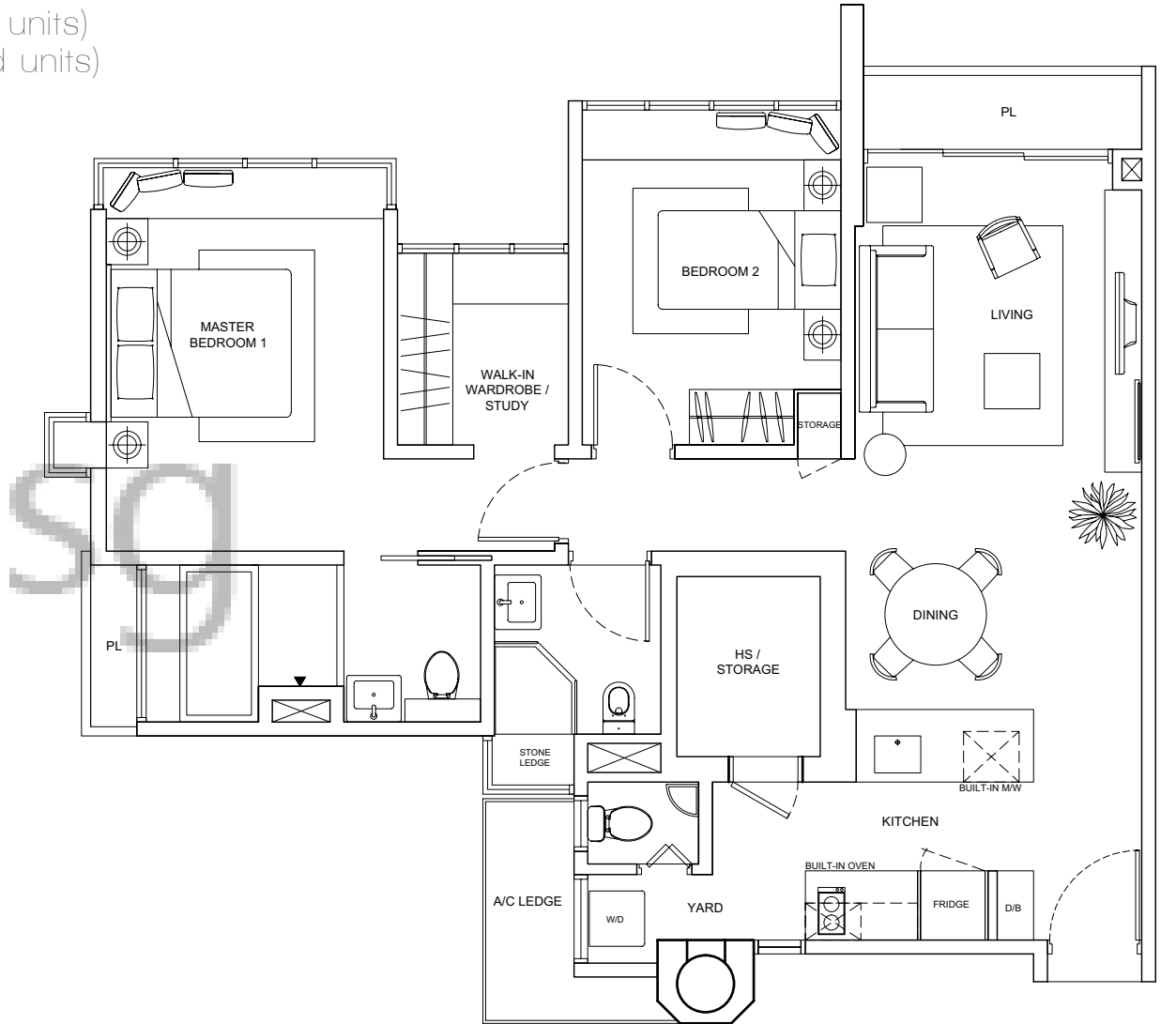


Floor areas are approximate measurements and subject to final survey.
Some units have been selected for upgrading. Please refer to upgraded plans.

2-BEDROOM APARTMENT WITH STUDY (UPGRADED)

TYPE B1S

Unit Blk 925 #02-12 to #09-12 (for selected units)
Unit Blk 937 #02-35 to #09-35 (for selected units)
Area 990sqm



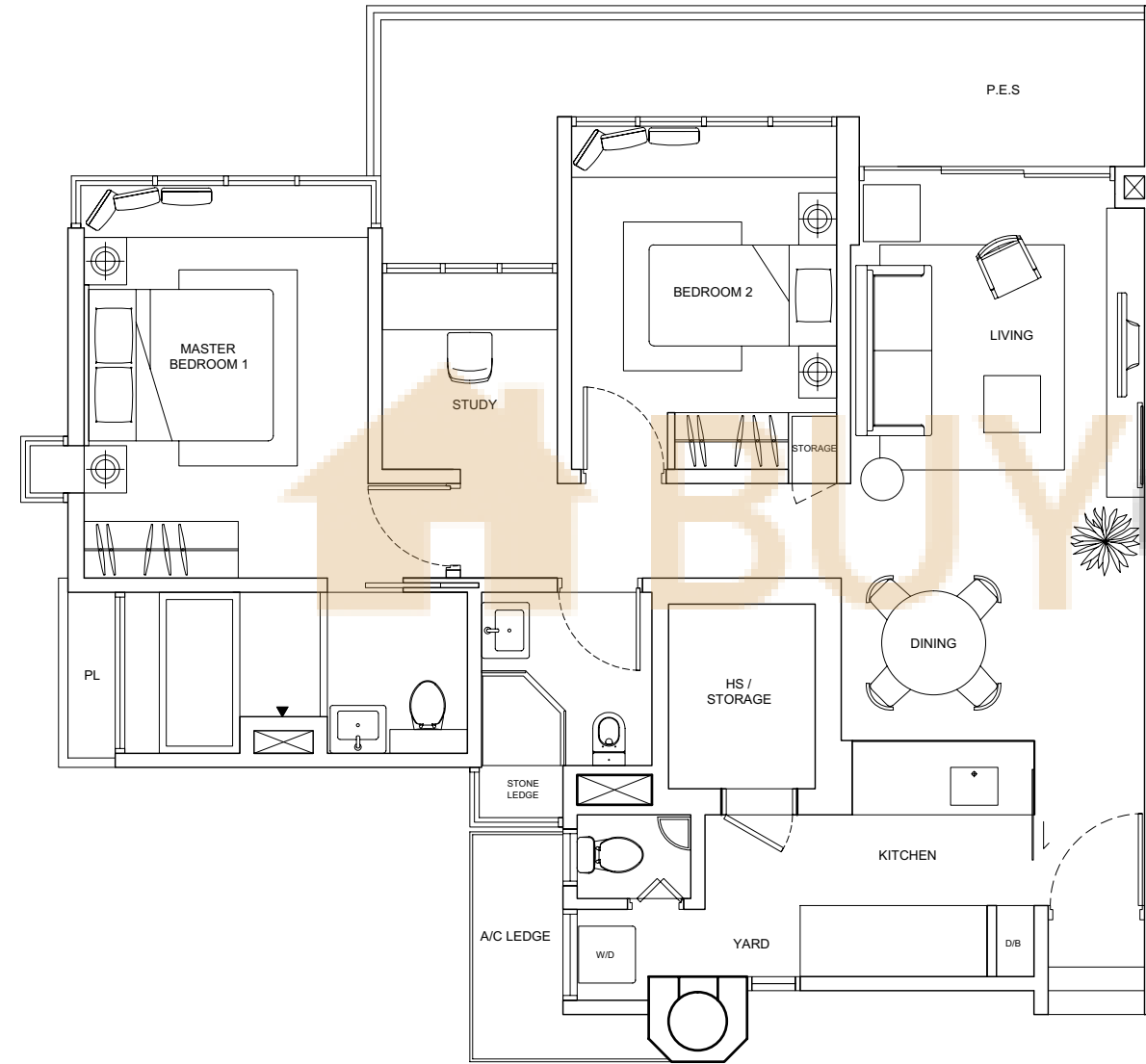
Floor areas are approximate measurements and subject to final survey.
Some units have been selected for upgrading. Please refer to upgraded plans.

2-BEDROOM APARTMENT WITH STUDY & PES

TYPE B1S-A1

Unit Blk 925 #01-12

Area 1,098sqm



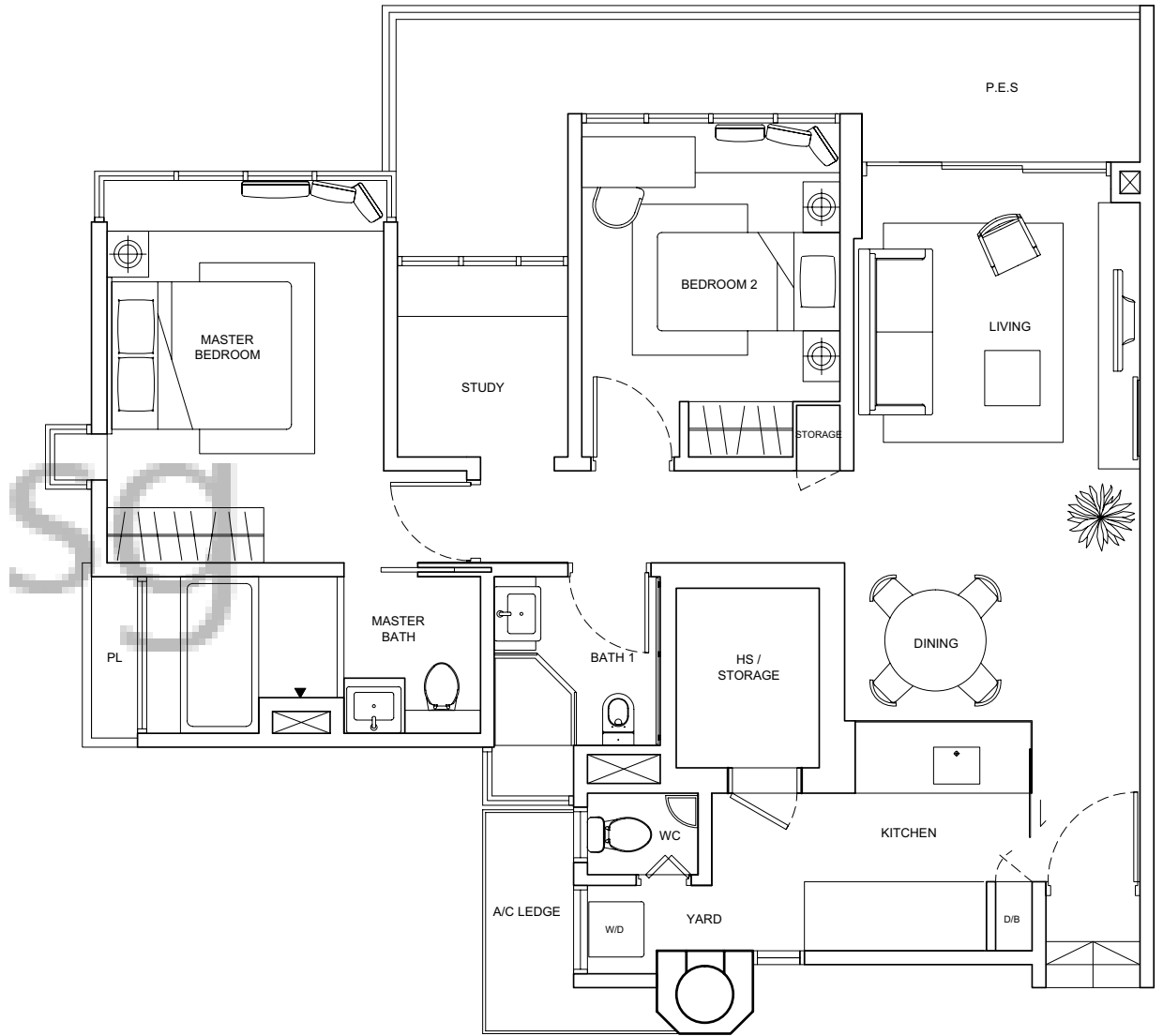
Floor areas are approximate measurements and subject to final survey.
Some units have been selected for upgrading. Please refer to upgraded plans.

2-BEDROOM APARTMENT WITH STUDY & PES

TYPE B1S-A2

Unit Blk 937 #01-35

Area 1,141sqm



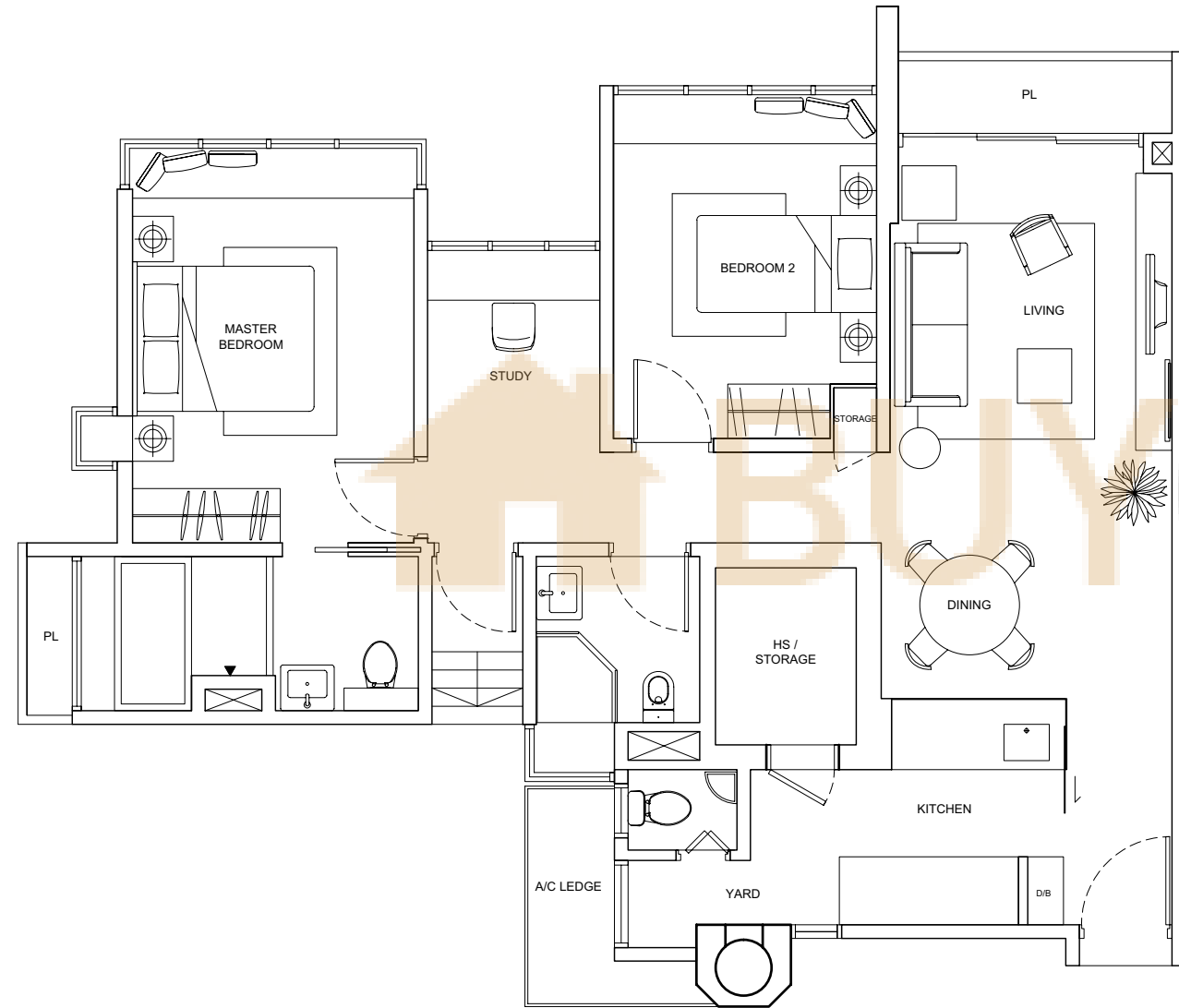
Floor areas are approximate measurements and subject to final survey.
Some units have been selected for upgrading. Please refer to upgraded plans.

2-BEDROOM PENTHOUSE WITH STUDY

TYPE B1S-P (LOWER)

Unit Blk 925 #10-12

Area 1,916sqm



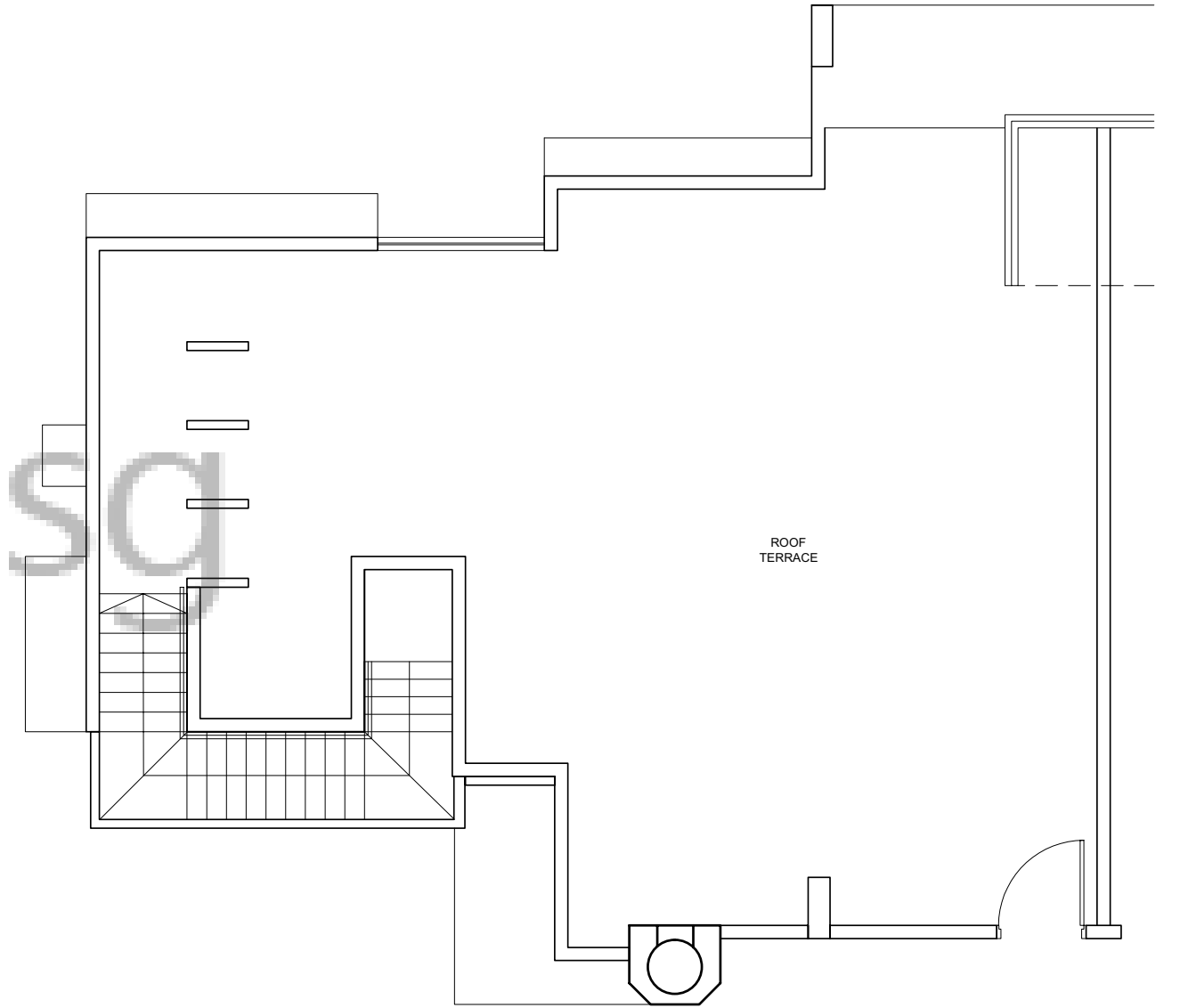
Floor areas are approximate measurements and subject to final survey.
Some units have been selected for upgrading. Please refer to upgraded plans.

2-BEDROOM PENTHOUSE WITH STUDY

TYPE B1S-P (UPPER)

Unit Blk 925 #10-12

Area 1,916sqm



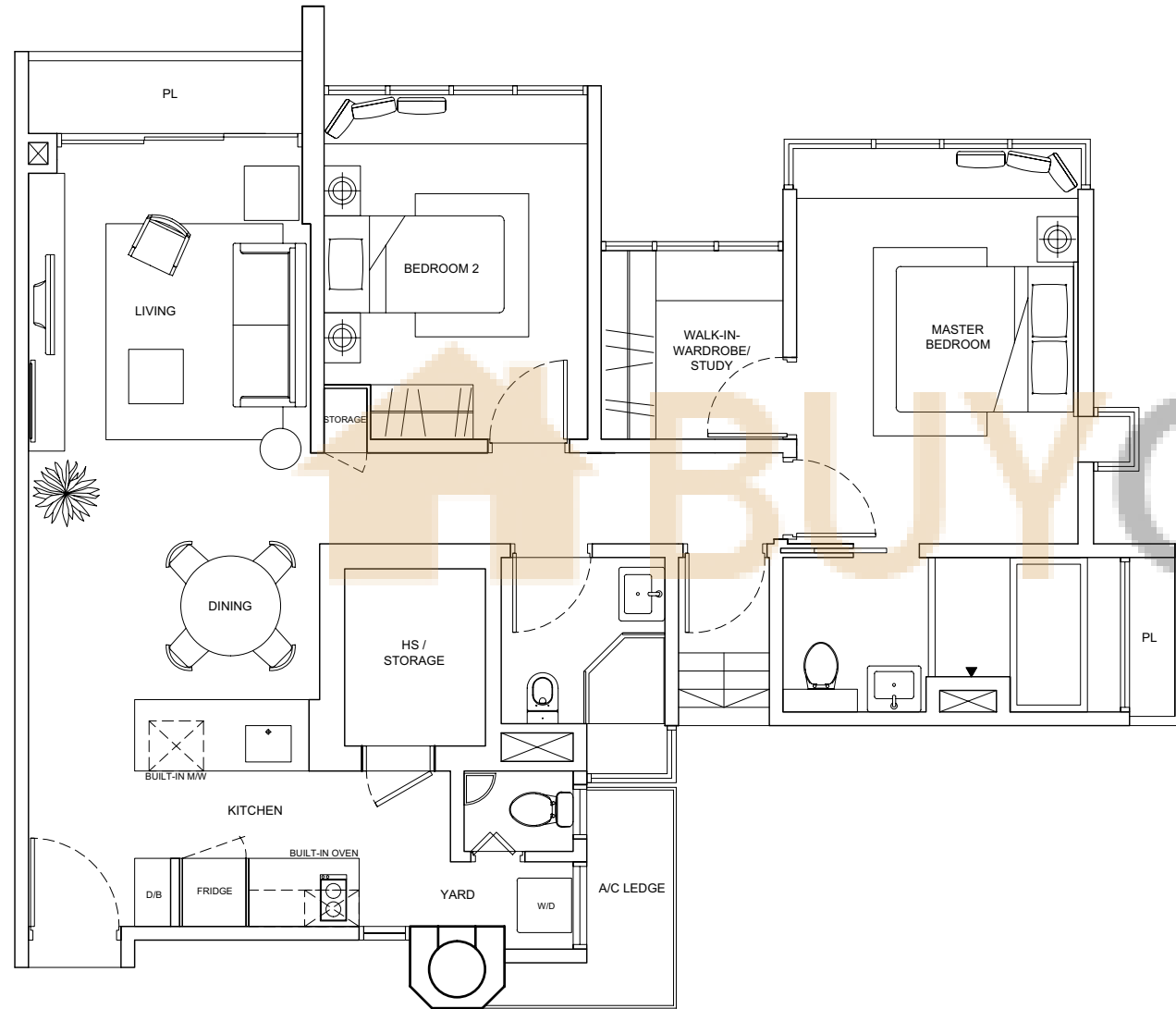
Floor areas are approximate measurements and subject to final survey.
Some units have been selected for upgrading. Please refer to upgraded plans.

2-BEDROOM PENTHOUSE WITH STUDY (UPGRADED)

TYPE B1S-P (LOWER)

Unit Blk 925 #10-13

Area 1,916sqm



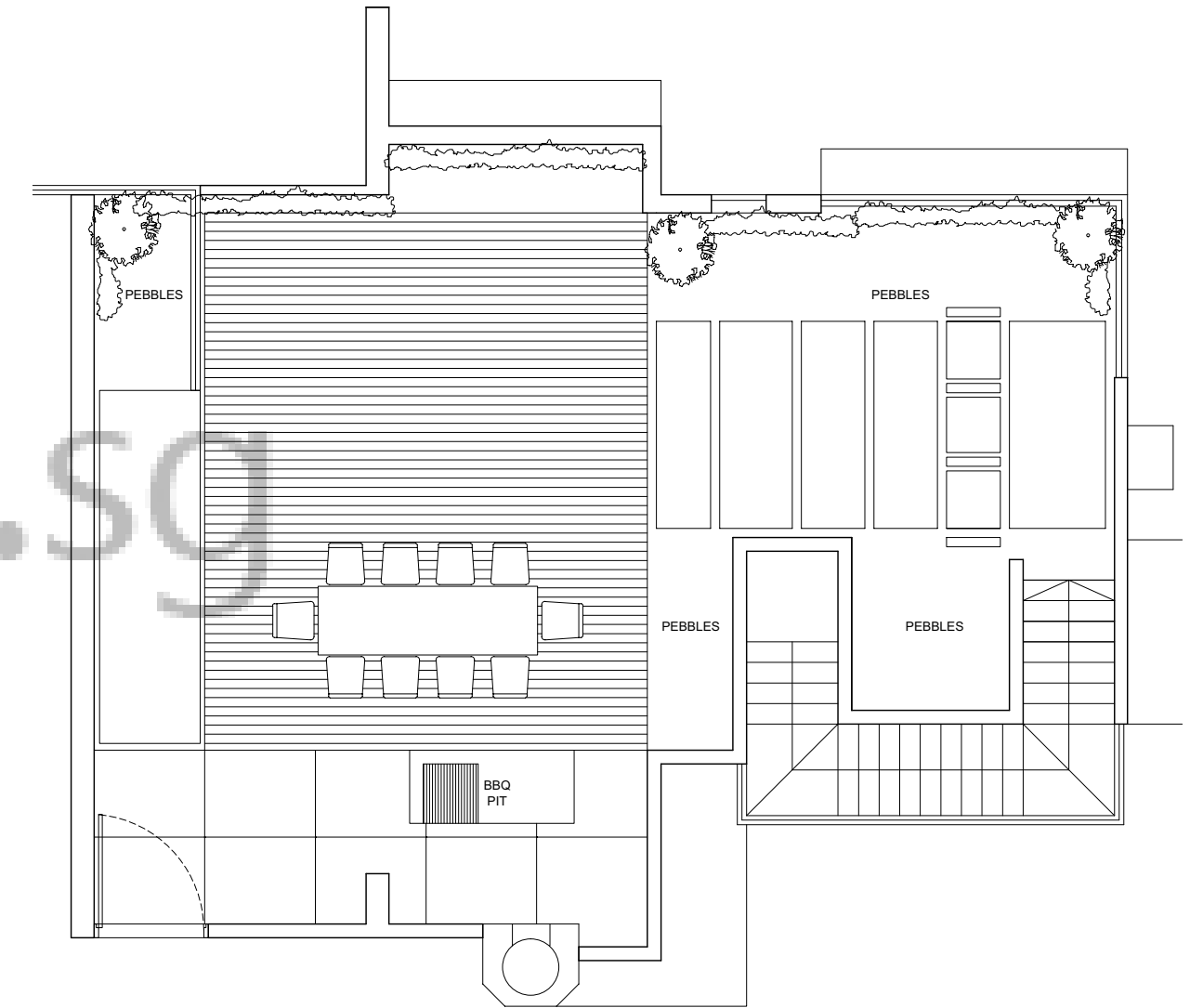
Floor areas are approximate measurements and subject to final survey.
Some units have been selected for upgrading. Please refer to upgraded plans.

2-BEDROOM PENTHOUSE WITH STUDY (UPGRADED)

TYPE B1S-P (UPPER)

Unit Blk 925 #10-13

Area 1,916sqm



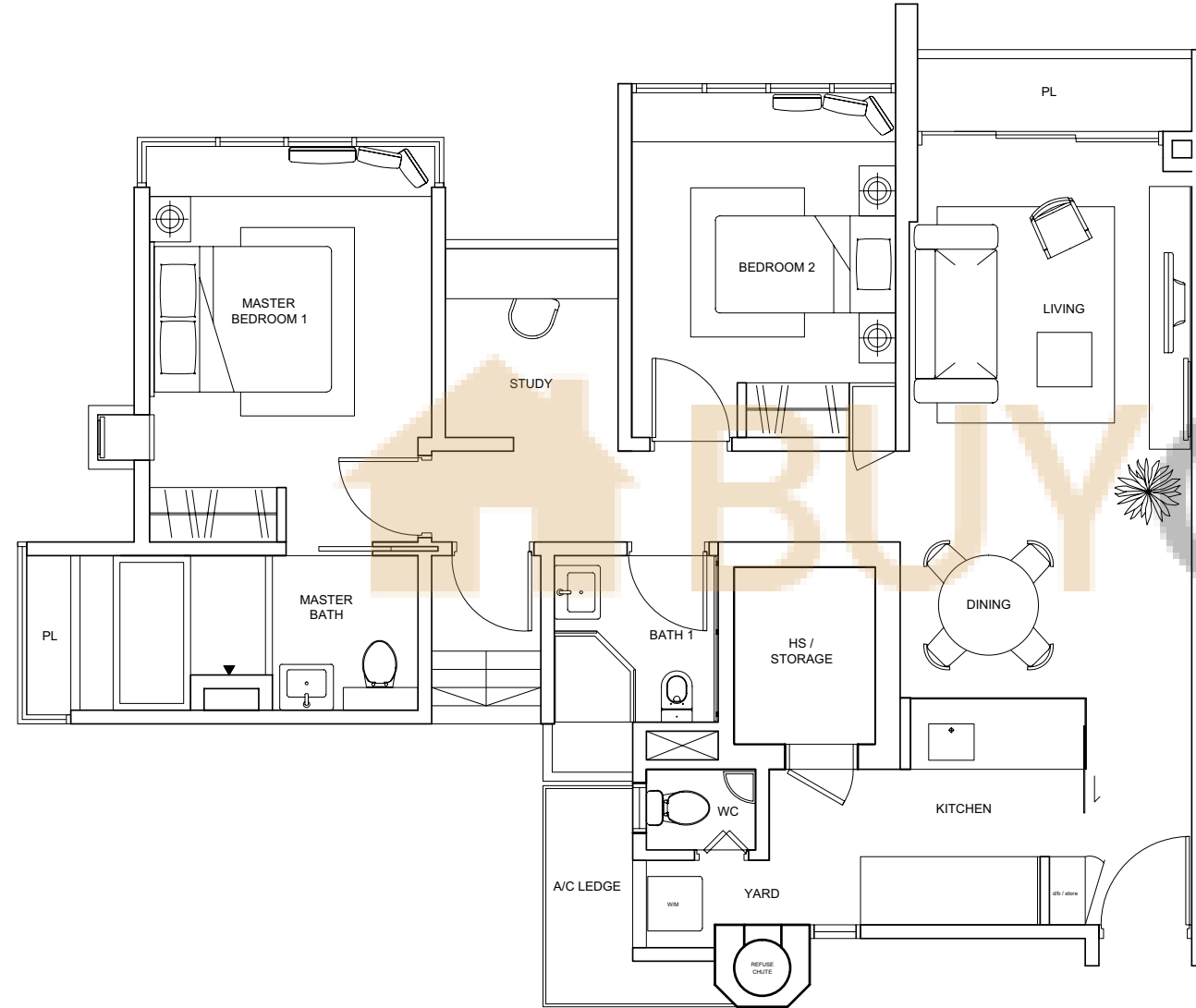
Floor areas are approximate measurements and subject to final survey.
Some units have been selected for upgrading. Please refer to upgraded plans.

2-BEDROOM PENTHOUSE WITH STUDY

TYPE B1S-P1 (LOWER)

Unit Blk 937 #10-35

Area 1,970sqm



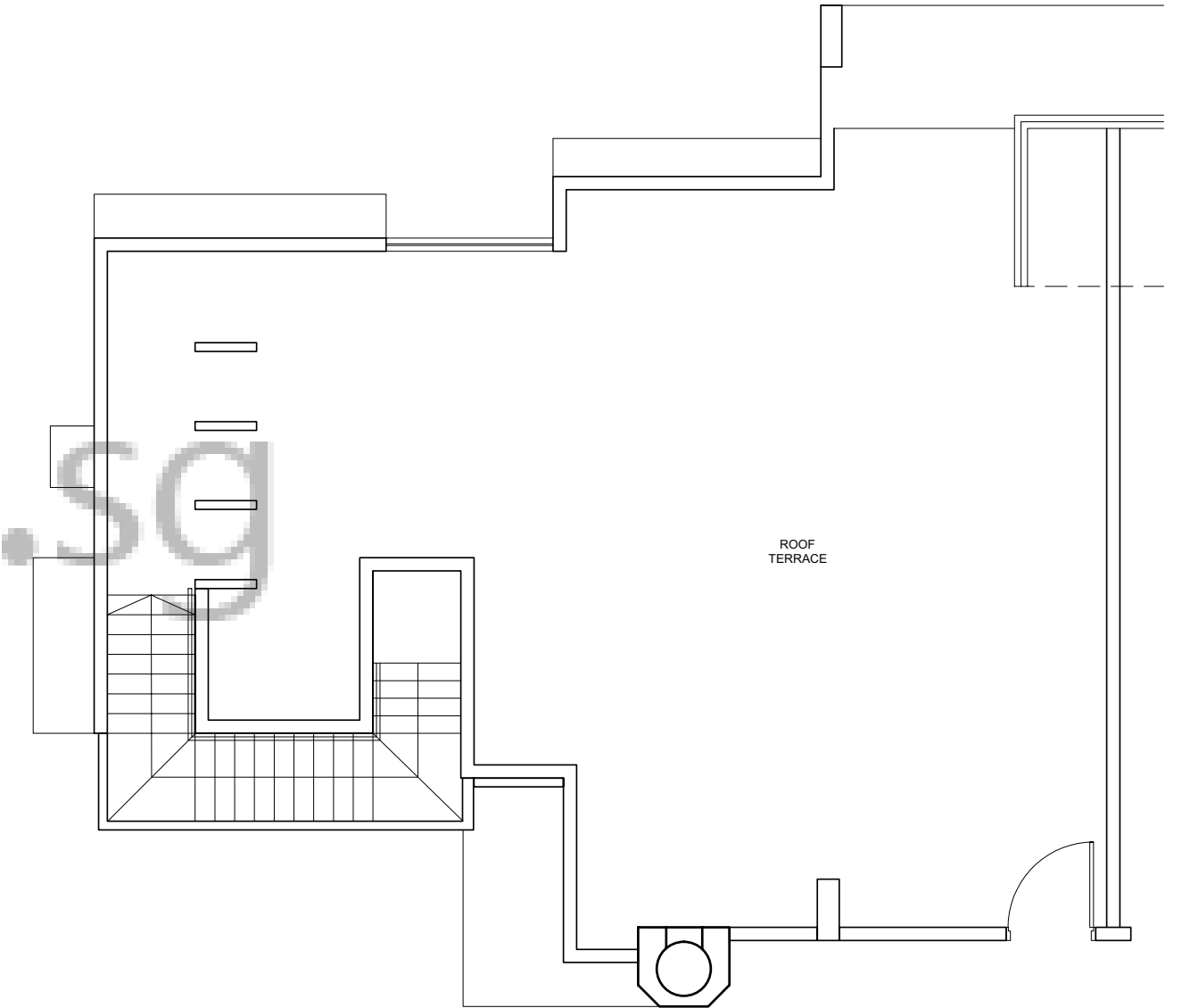
Floor areas are approximate measurements and subject to final survey.
Some units have been selected for upgrading. Please refer to upgraded plans.

2-BEDROOM PENTHOUSE WITH STUDY

TYPE B1S-P1 (UPPER)

Unit Blk 937 #10-35

Area 1,970sqm



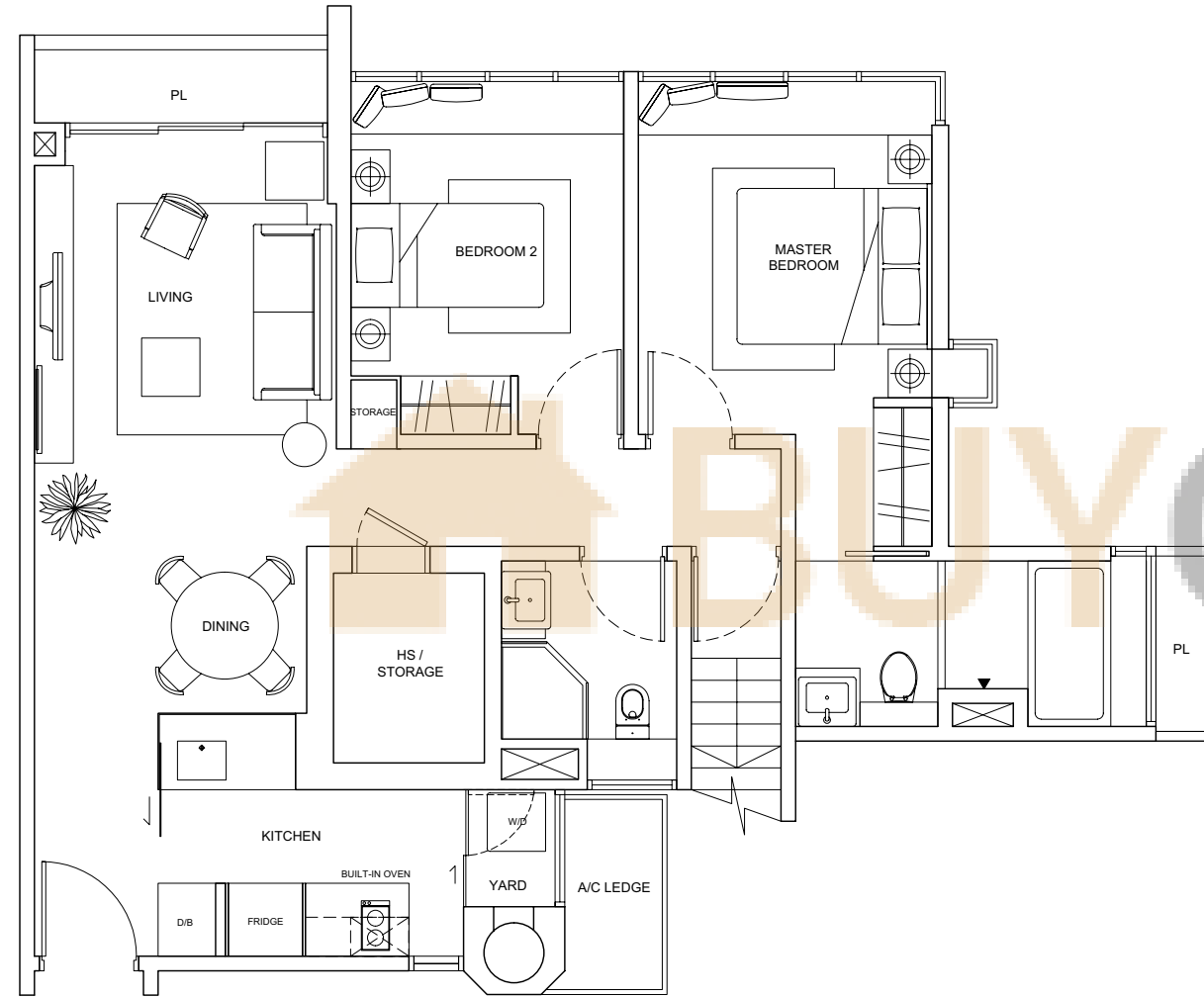
Floor areas are approximate measurements and subject to final survey.
Some units have been selected for upgrading. Please refer to upgraded plans.

2-BEDROOM PENTHOUSE

TYPE B1-P1 (LOWER)

Unit Blk 921 #10-03

Area 2,239sqm



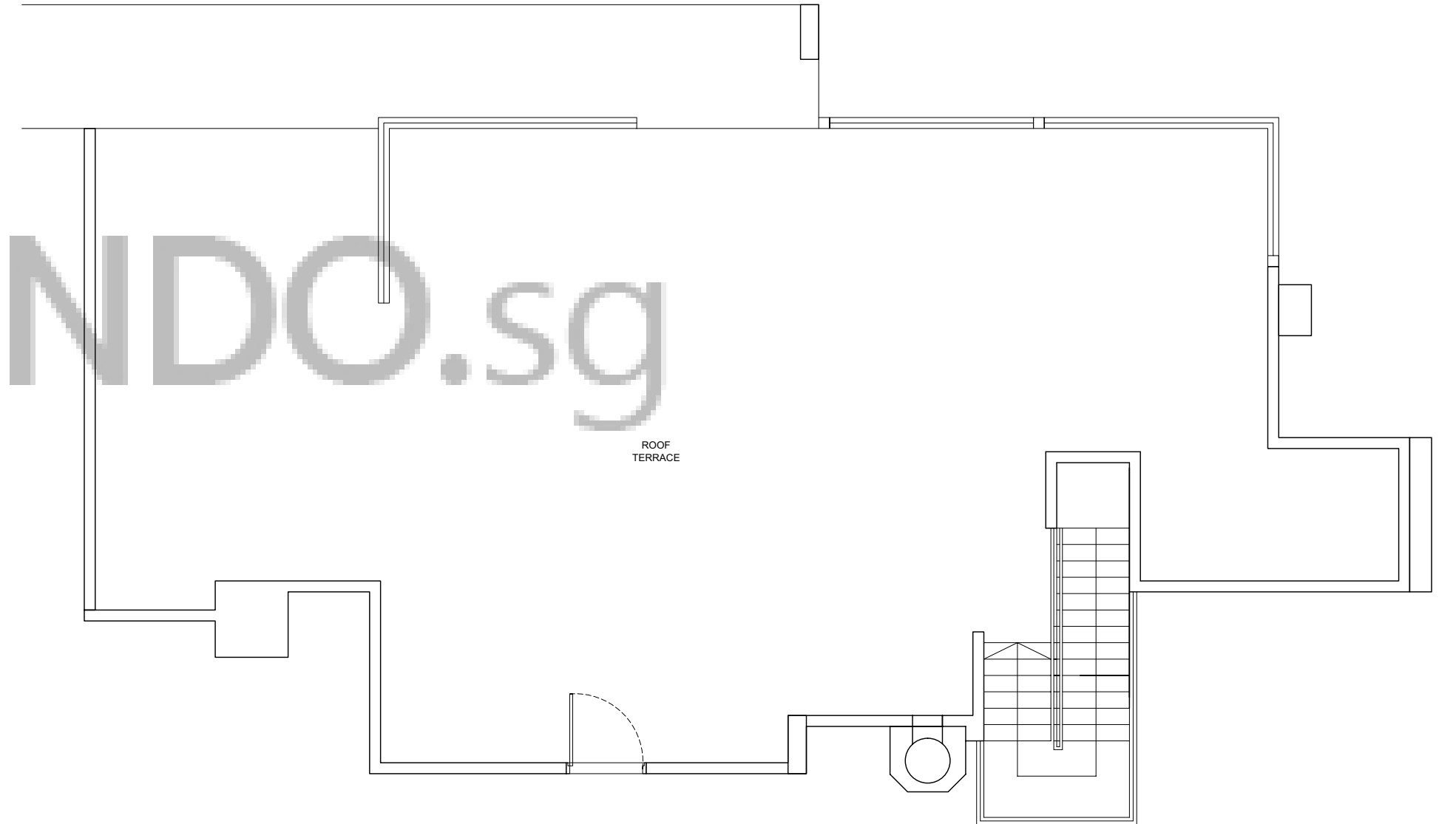
Floor areas are approximate measurements and subject to final survey.
Some units have been selected for upgrading. Please refer to upgraded plans.

2-BEDROOM PENTHOUSE

TYPE B1-P1 (UPPER)

Unit Blk 921 #10-03

Area 2,239sqm



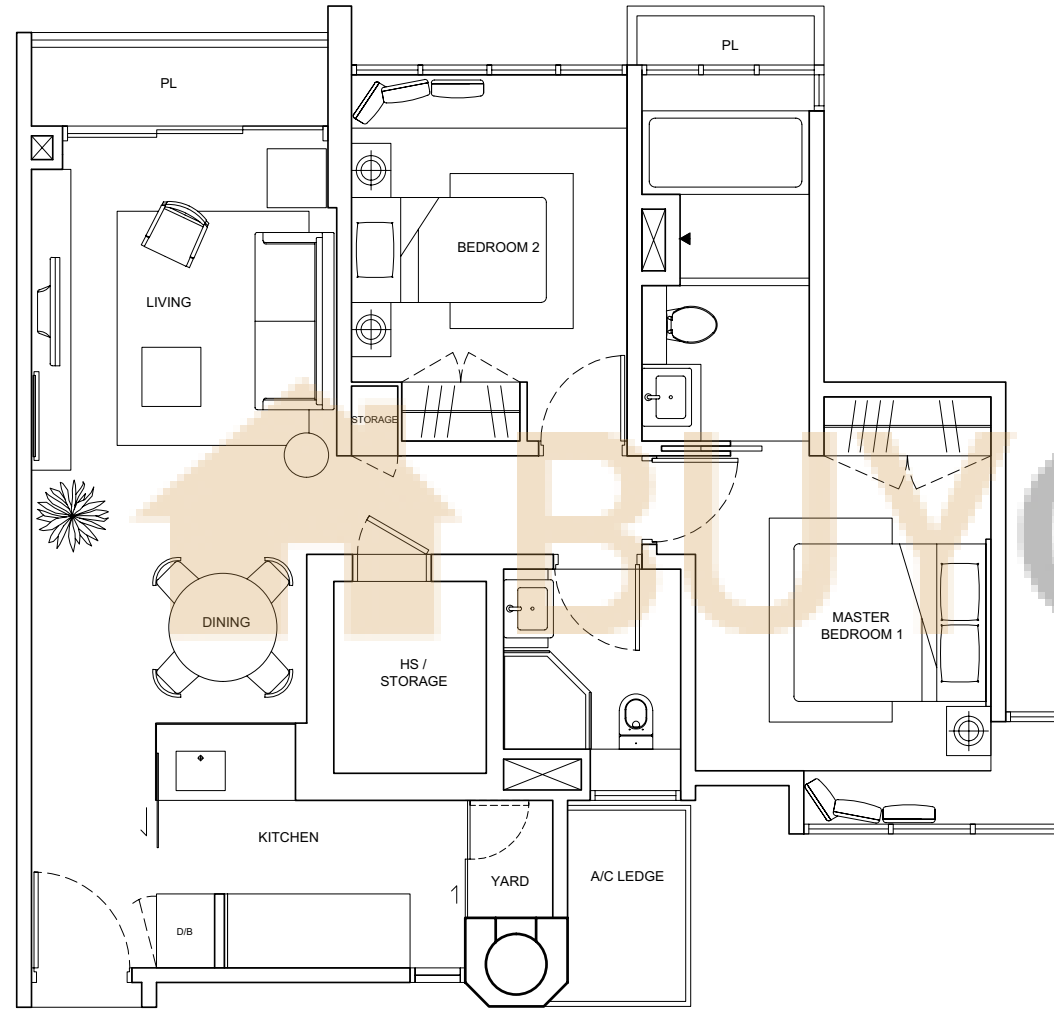
Floor areas are approximate measurements and subject to final survey.
Some units have been selected for upgrading. Please refer to upgraded plans.

2-BEDROOM APARTMENT

TYPE B2

Unit Blk 921 #02-05 TO #09-05

Area 872sqm



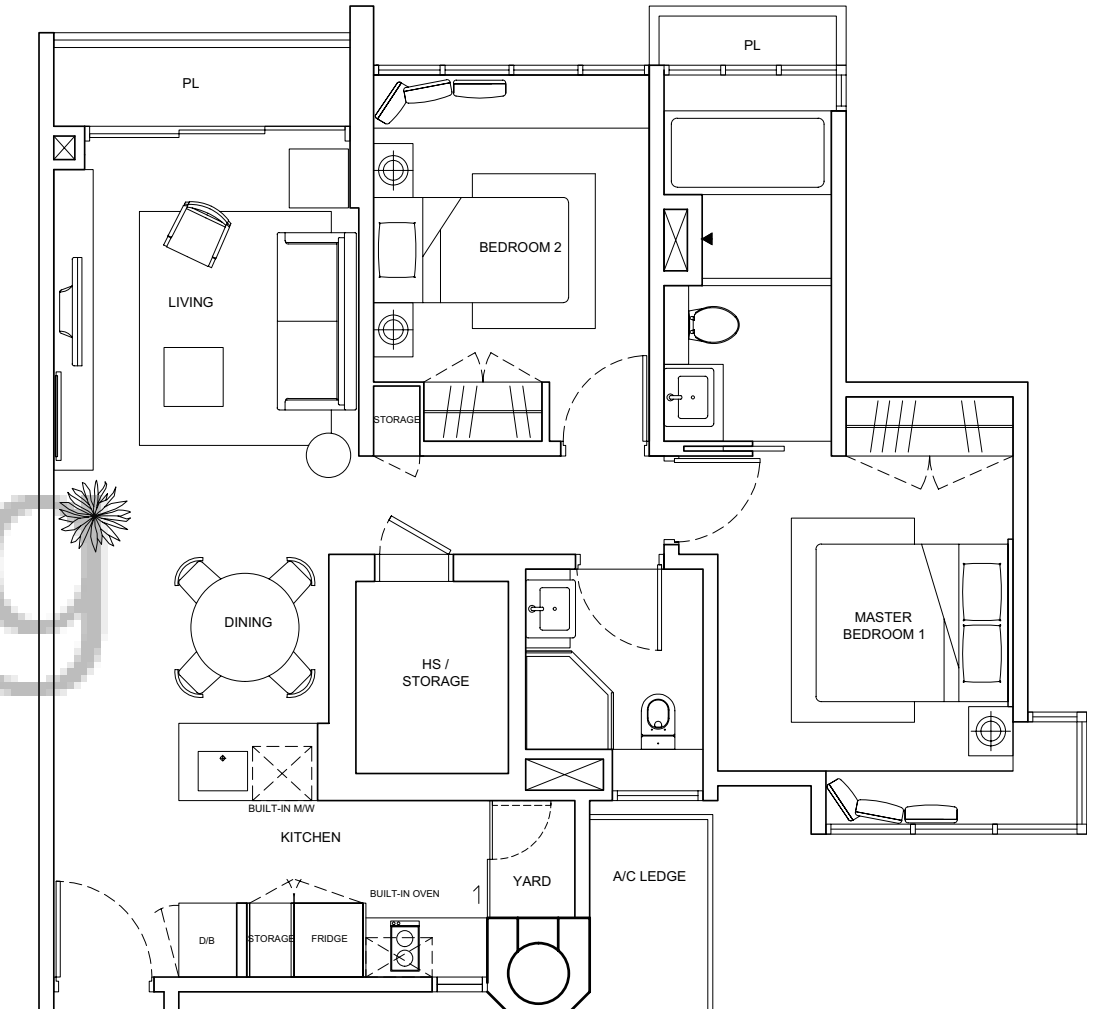
Floor areas are approximate measurements and subject to final survey.
Some units have been selected for upgrading. Please refer to upgraded plans.

2-BEDROOM APARTMENT (UPGRADED)

TYPE B2

Unit Blk 921 #02-05 TO #09-05 (for selected units)

Area 872sqm



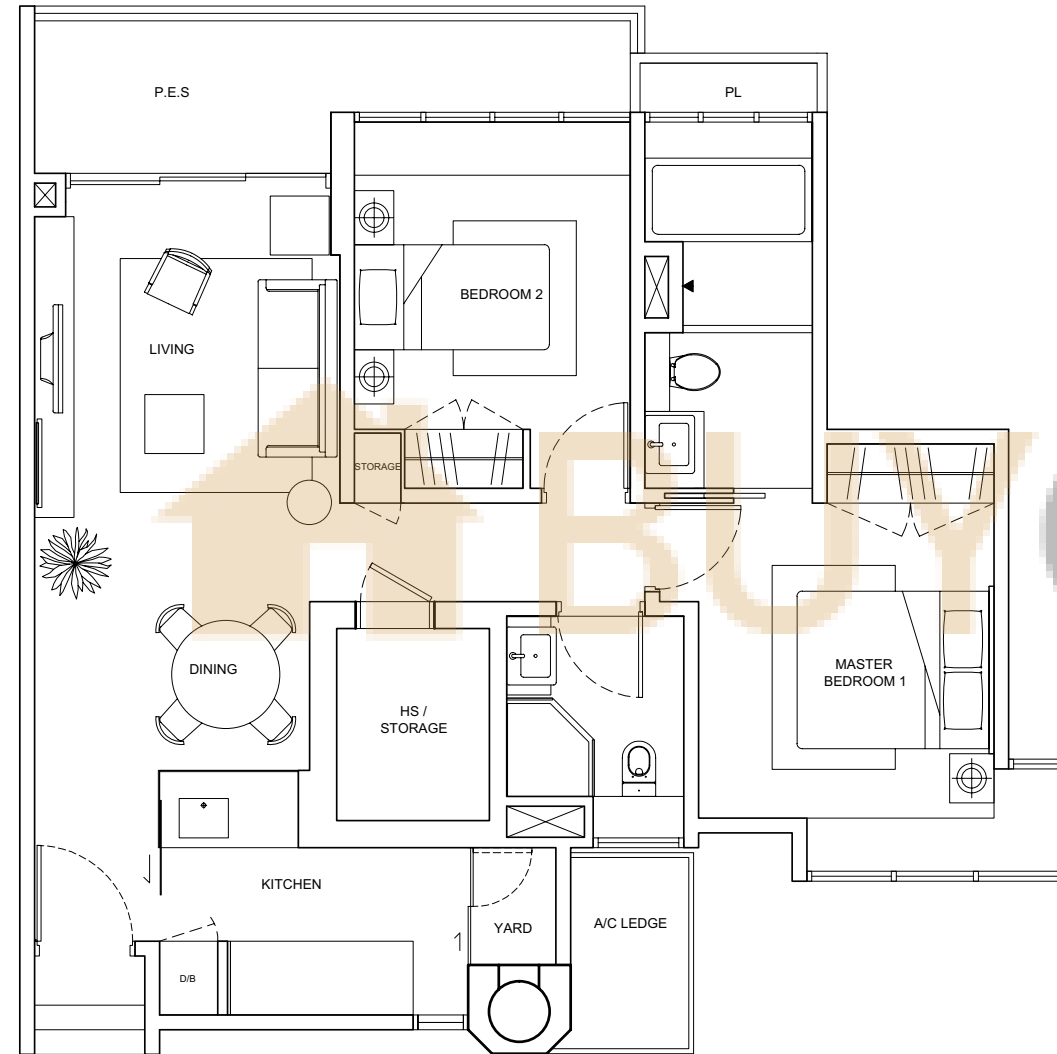
Floor areas are approximate measurements and subject to final survey.
Some units have been selected for upgrading. Please refer to upgraded plans.

2-BEDROOM APARTMENT WITH PES

TYPE B2-A

Unit Blk 921 #01-05

Area 926sqm



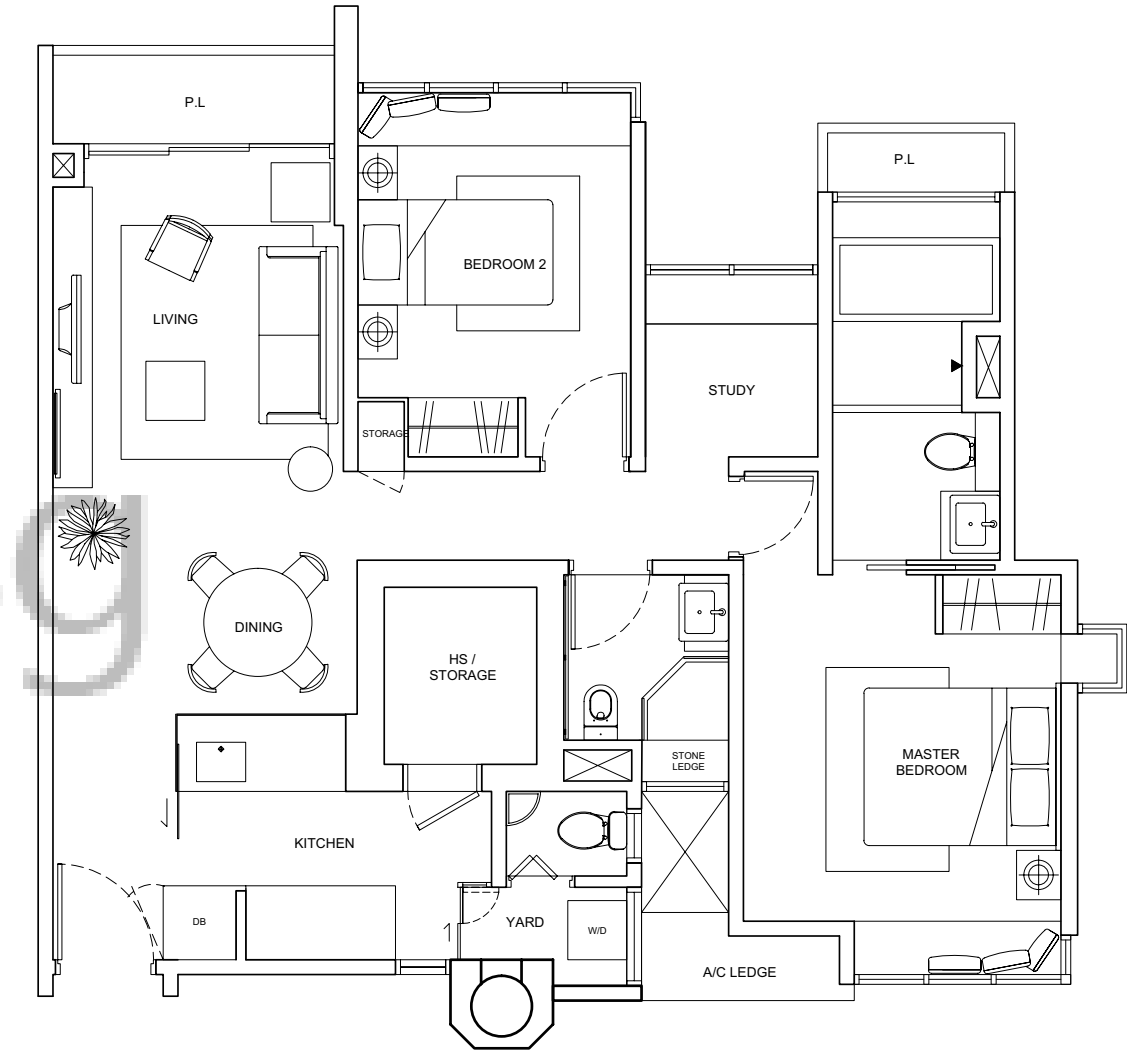
Floor areas are approximate measurements and subject to final survey.
Some units have been selected for upgrading. Please refer to upgraded plans.

2-BEDROOM APARTMENT WITH STUDY

TYPE B2S

Unit Blk 925 #02-11 TO #08-11

Area 990sqm



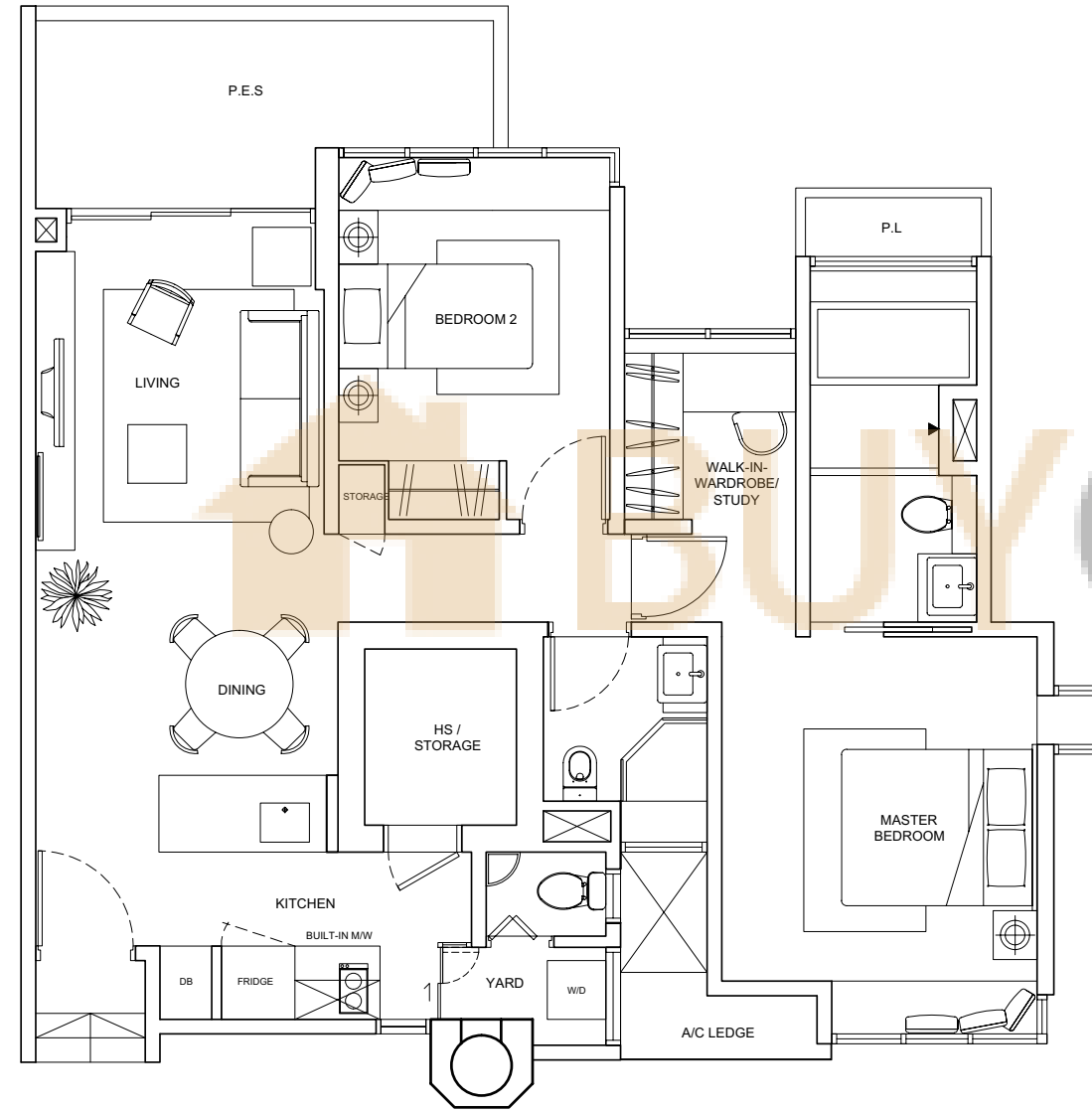
Floor areas are approximate measurements and subject to final survey.
Some units have been selected for upgrading. Please refer to upgraded plans.

2-BEDROOM APARTMENT WITH STUDY (UPGRADED)

TYPE B2S-A

Unit Blk 925 #01-11

Area 1,044sqm



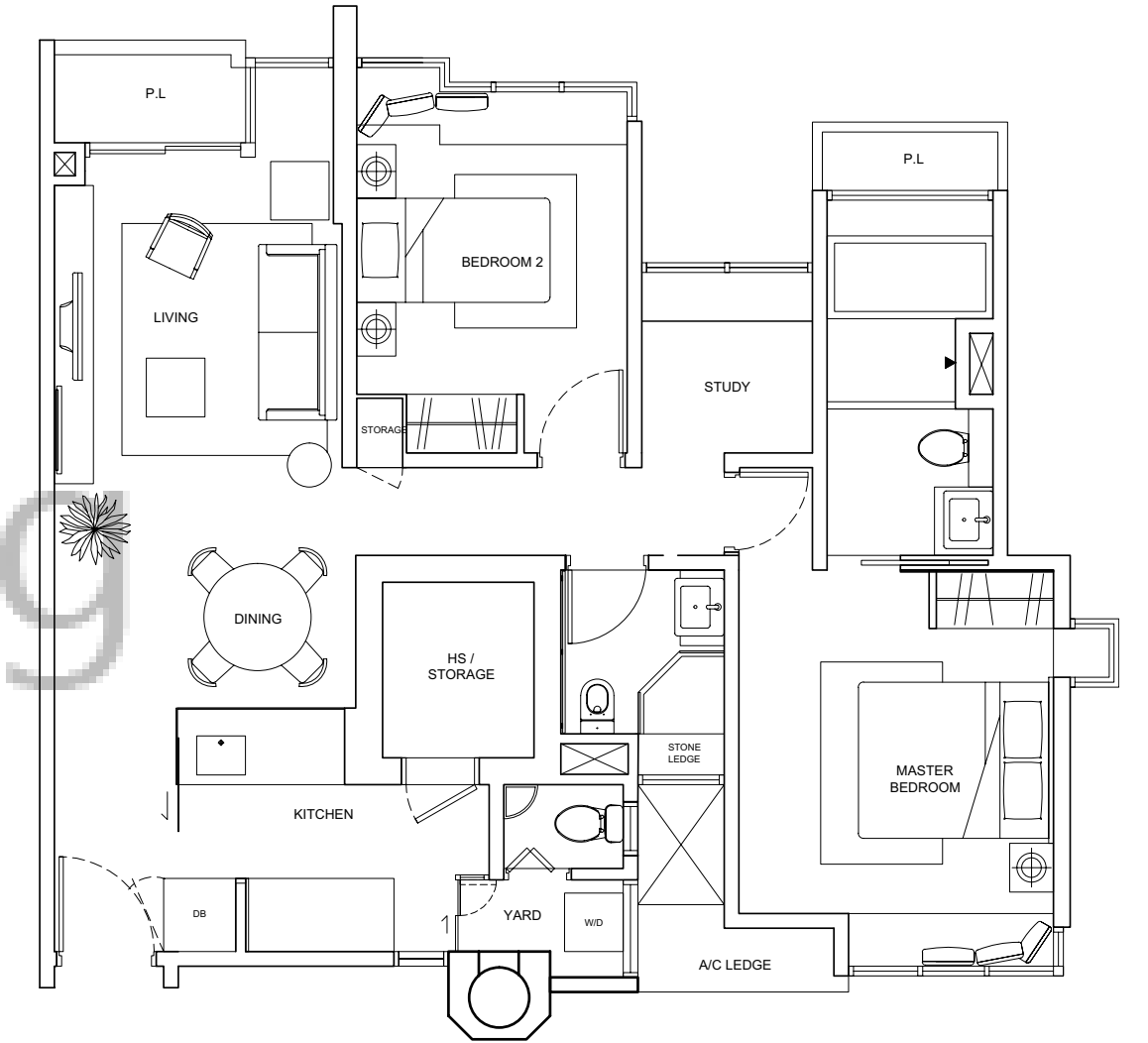
Floor areas are approximate measurements and subject to final survey.
Some units have been selected for upgrading. Please refer to upgraded plans.

2-BEDROOM APARTMENT WITH STUDY

TYPE B2S-B

Unit Blk 925 #09-11

Area 990sqm



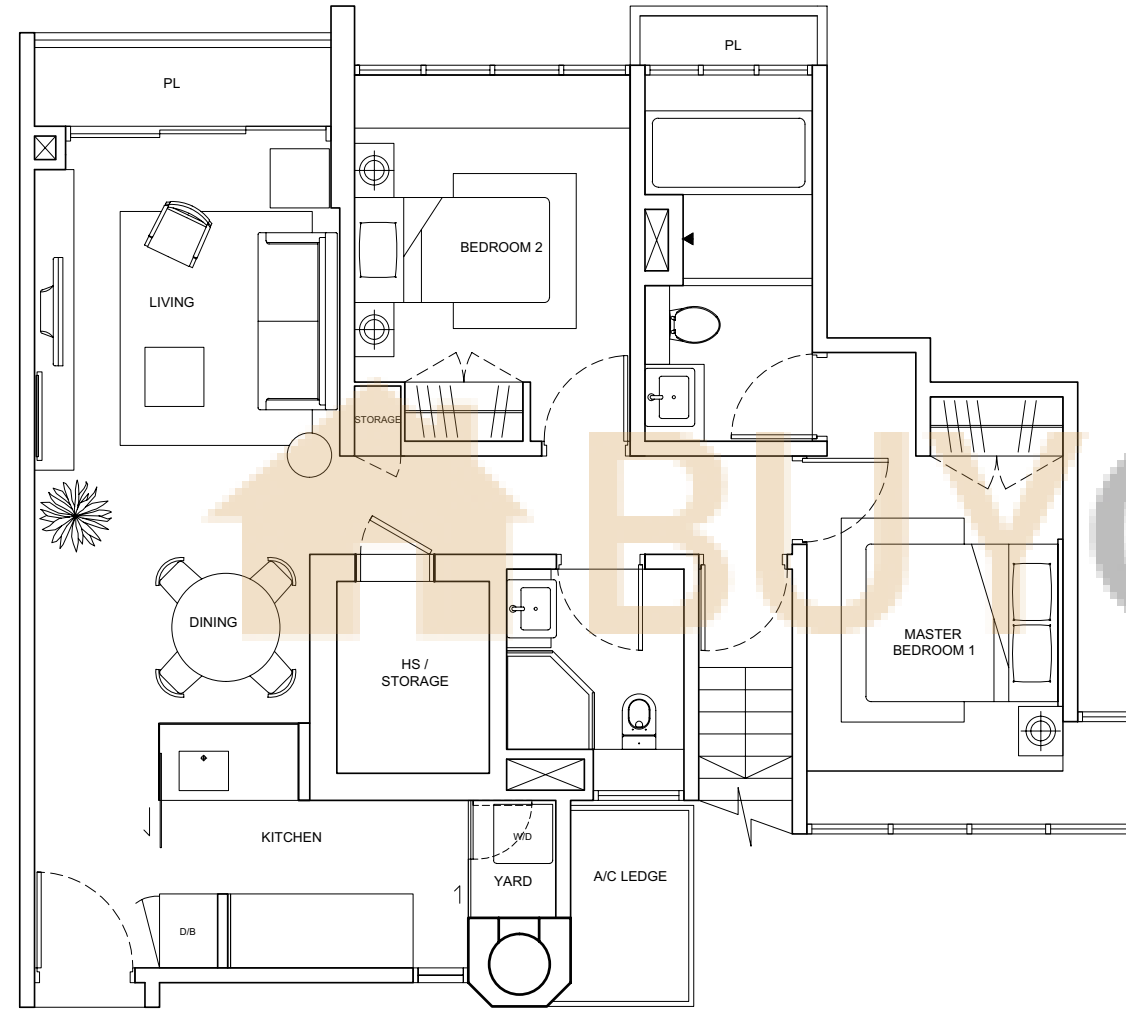
Floor areas are approximate measurements and subject to final survey.
Some units have been selected for upgrading. Please refer to upgraded plans.

2-BEDROOM PENTHOUSE

TYPE B2-P (LOWER)

Unit Blk 921 #10-05

Area 1,744sqm



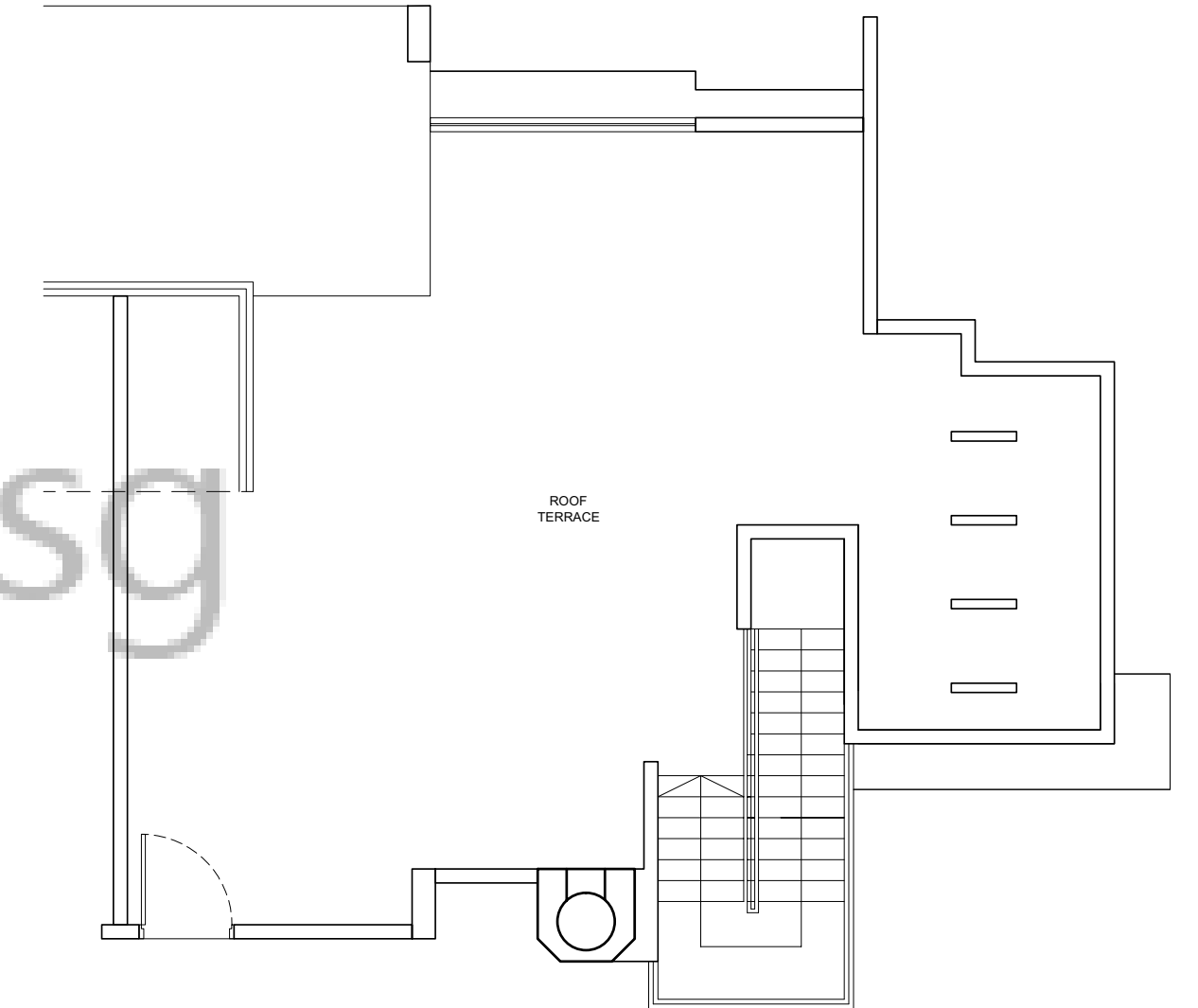
Floor areas are approximate measurements and subject to final survey.
Some units have been selected for upgrading. Please refer to upgraded plans.

2-BEDROOM PENTHOUSE

TYPE B2-P (UPPER)

Unit Blk 921 #10-05

Area 1,744sqm

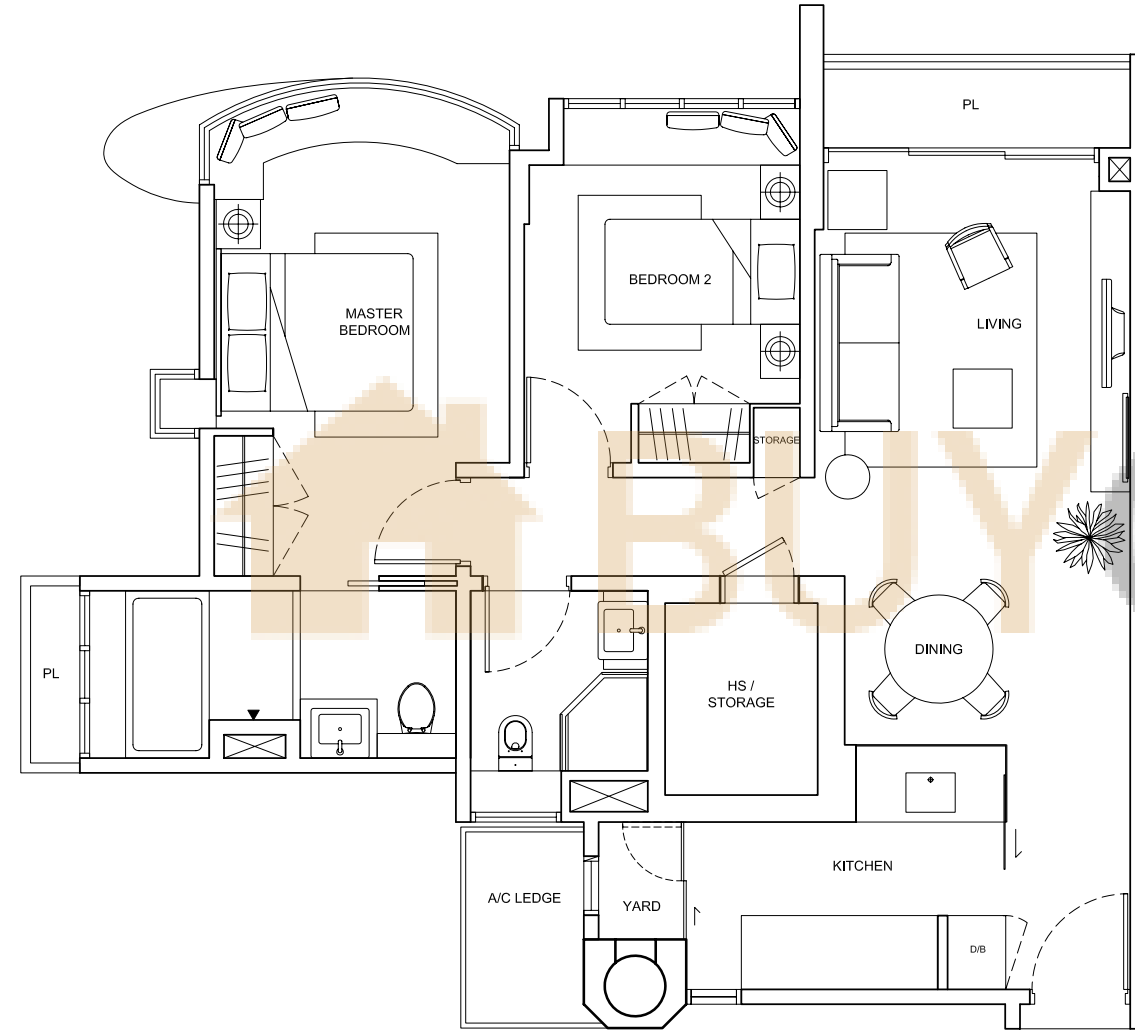


Floor areas are approximate measurements and subject to final survey.
Some units have been selected for upgrading. Please refer to upgraded plans.

2-BEDROOM APARTMENT

TYPE B6

Unit Blk 921 #03-01 TO #09-01
Area 883sqm

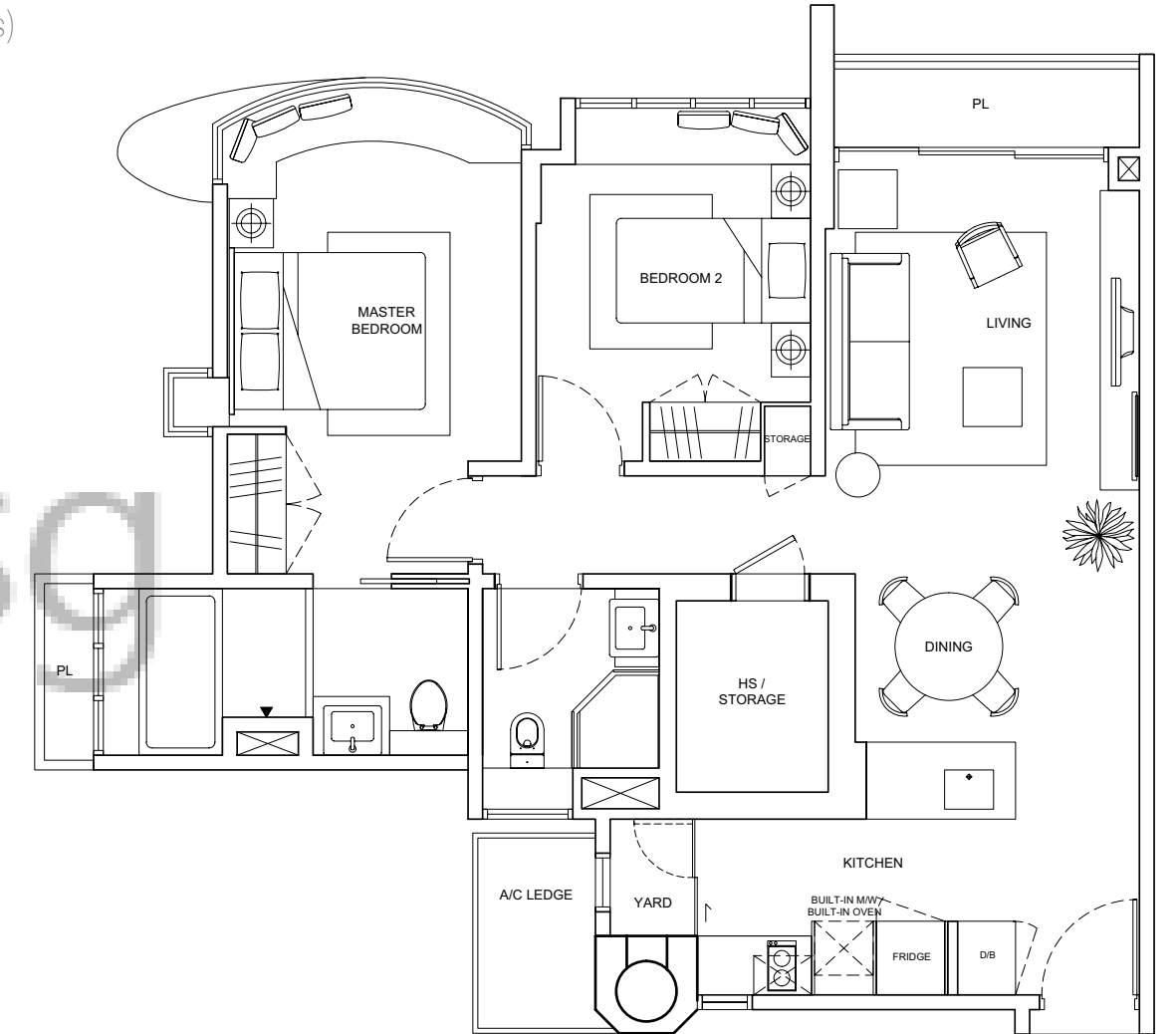


Floor areas are approximate measurements and subject to final survey.
Some units have been selected for upgrading. Please refer to upgraded plans.

2-BEDROOM APARTMENT (UPGRADED)

TYPE B6

Unit Blk 921 #03-01 TO #09-01 (for selected units)
Area 883sqm



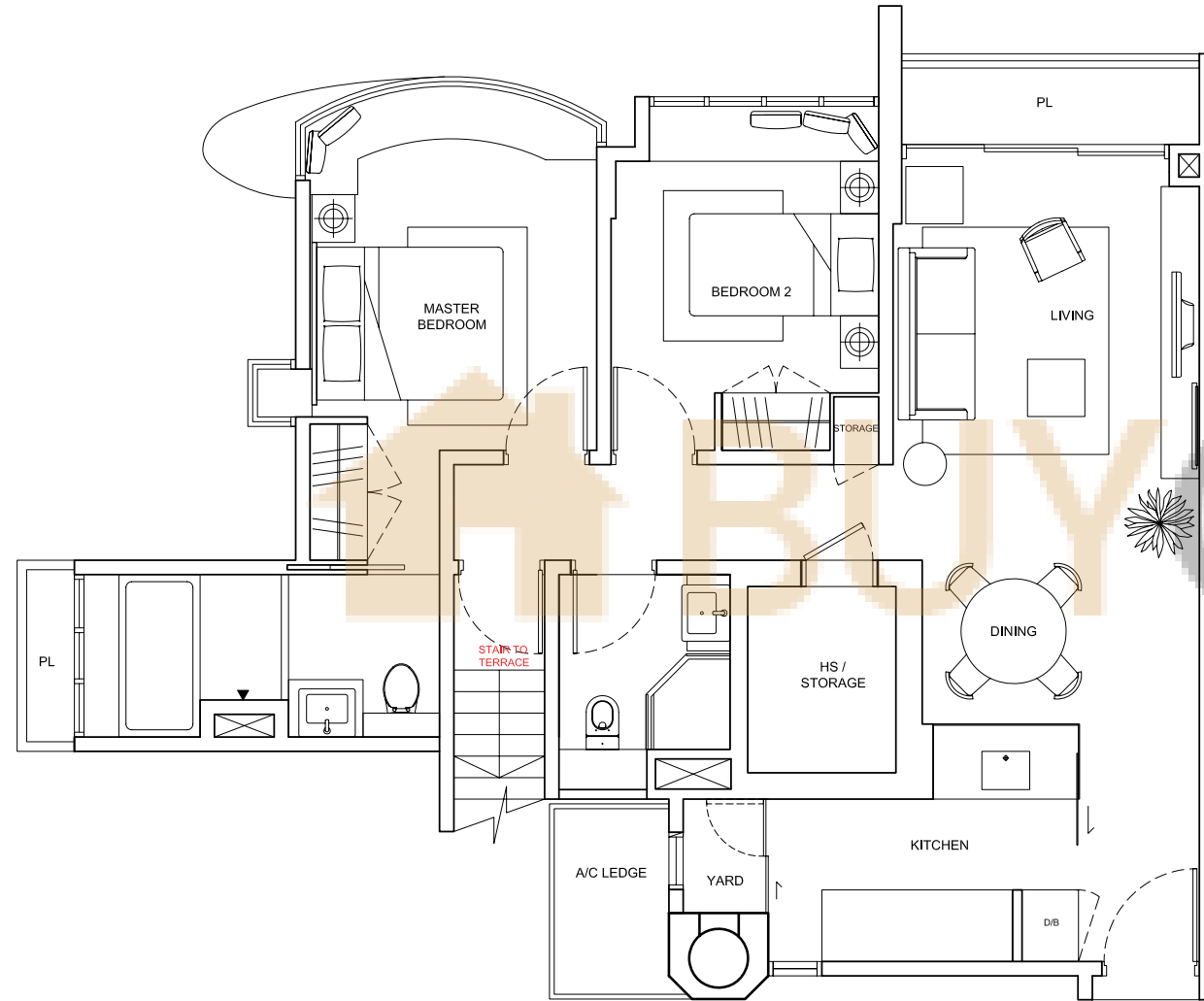
Floor areas are approximate measurements and subject to final survey.
Some units have been selected for upgrading. Please refer to upgraded plans.

2-BEDROOM PENTHOUSE

TYPE B6-P (LOWER)

Unit Blk 921 #10-01

Area 1,776sqm



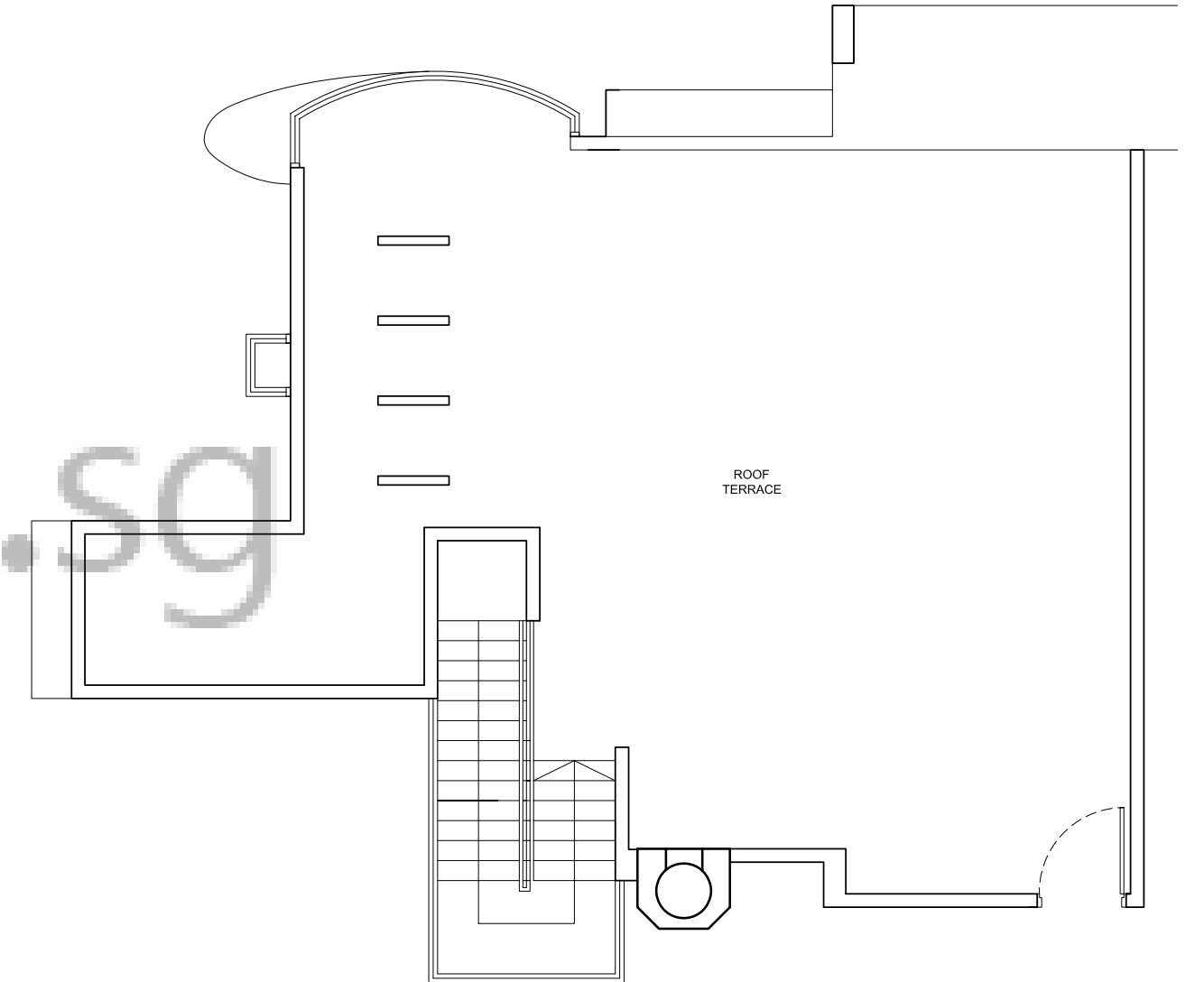
Floor areas are approximate measurements and subject to final survey.
Some units have been selected for upgrading. Please refer to upgraded plans.

2-BEDROOM PENTHOUSE

TYPE B6-P (UPPER)

Unit Blk 921 #10-01

Area 1,776sqm

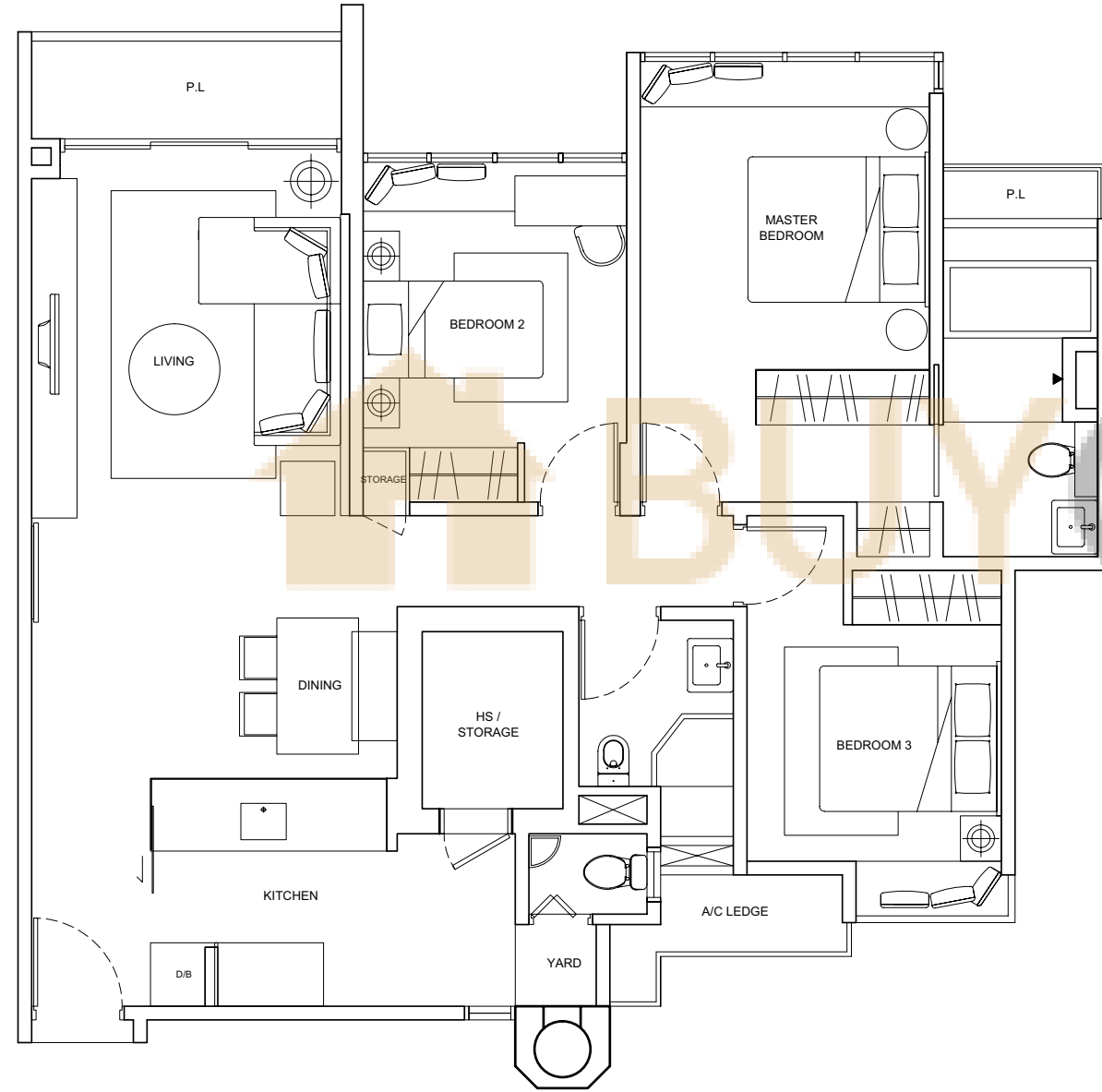


Floor areas are approximate measurements and subject to final survey.
Some units have been selected for upgrading. Please refer to upgraded plans.

3-BEDROOM APARTMENT

TYPE C1

Unit Blk 937 #02-36 TO #09-36
Area 1,184sqm

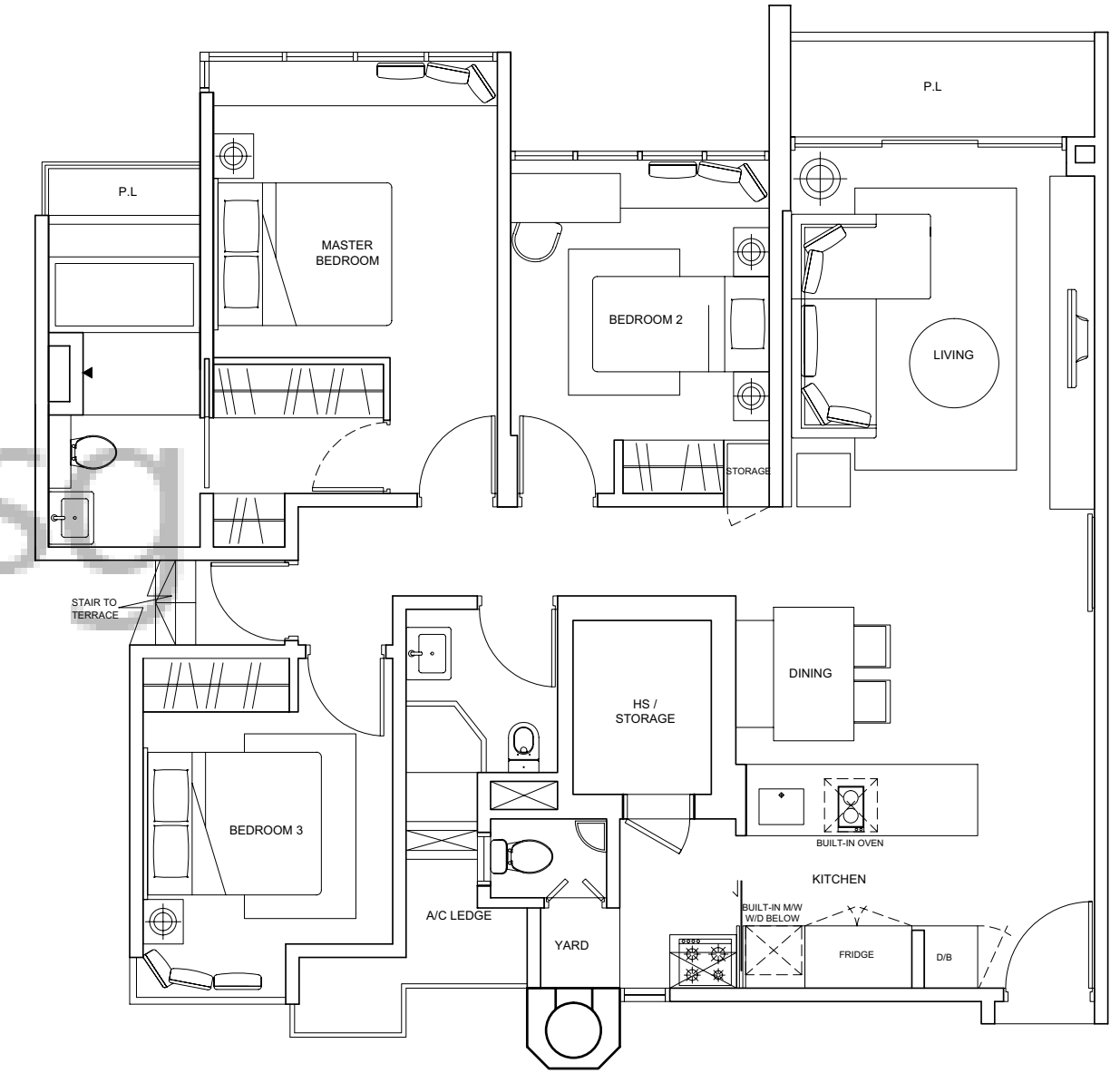


Floor areas are approximate measurements and subject to final survey.
Some units have been selected for upgrading. Please refer to upgraded plans.

3-BEDROOM PENTHOUSE (UPGRADED)

TYPE C1-P (LOWER)

Unit Blk 923 #10-08
Area 2,368sqm



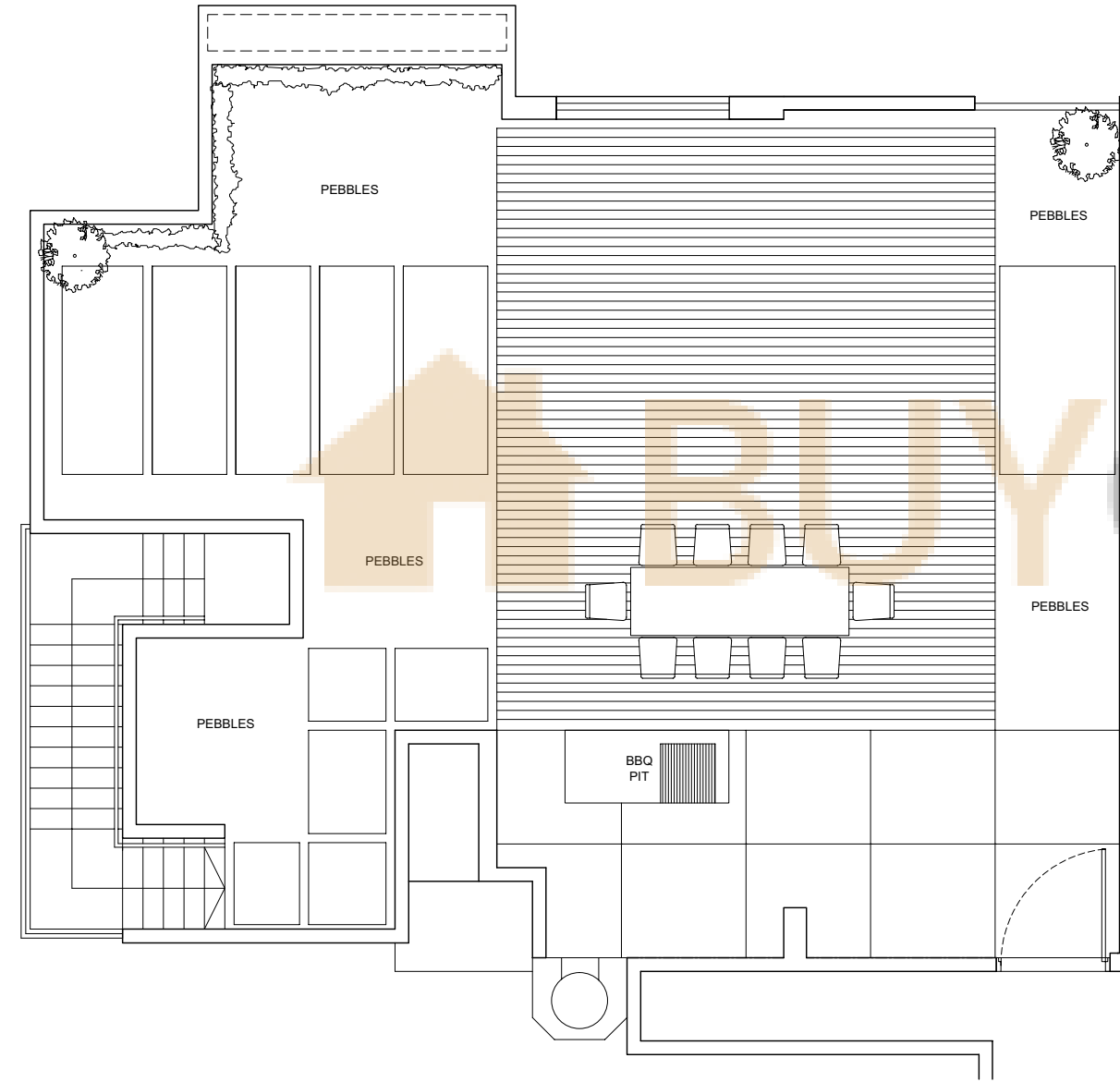
Floor areas are approximate measurements and subject to final survey.
Some units have been selected for upgrading. Please refer to upgraded plans.

3-BEDROOM PENTHOUSE (UPGRADED)

TYPE C1-P (UPPER)

Unit Blk 923 #10-08

Area 2,368sqm



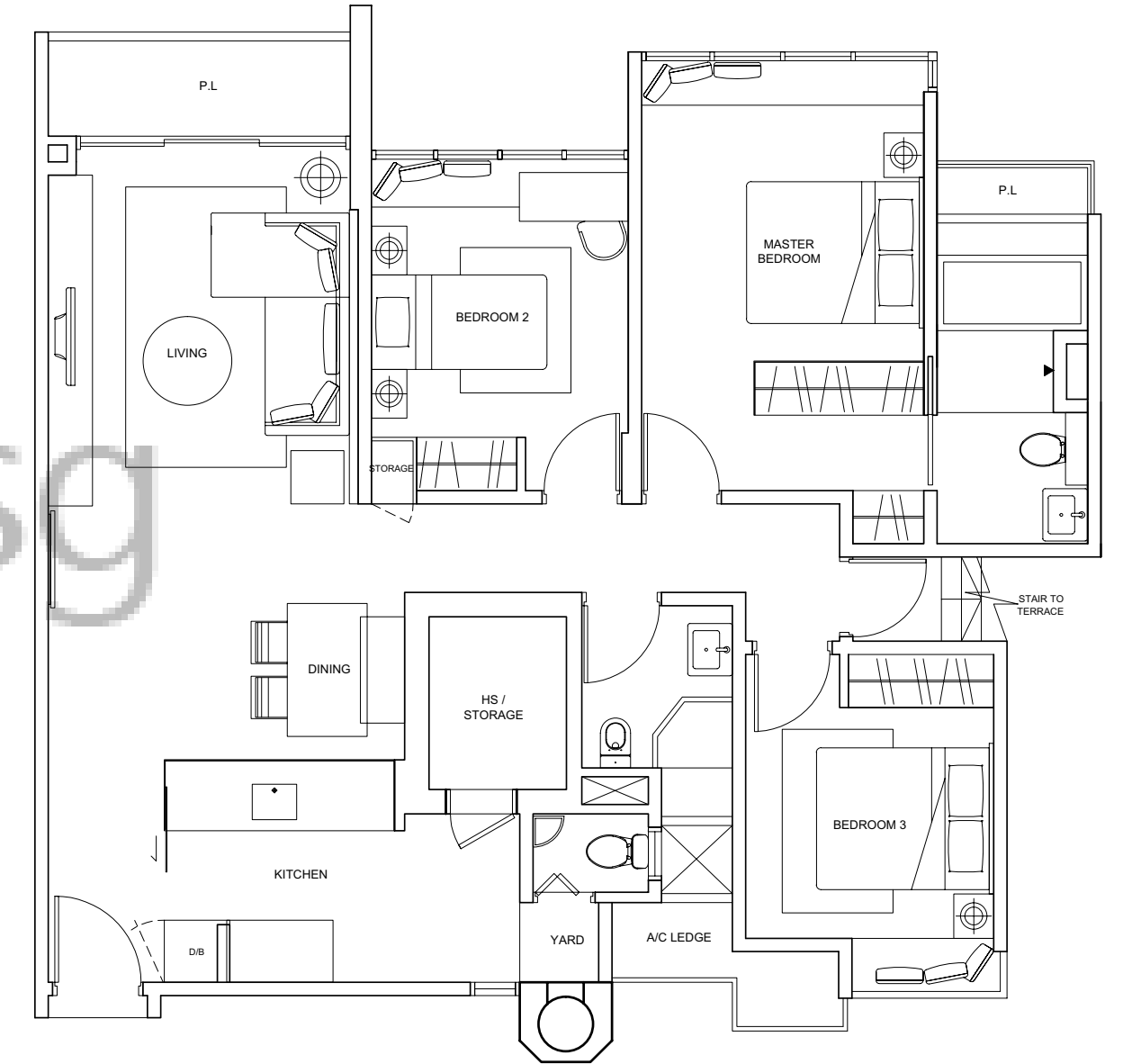
Floor areas are approximate measurements and subject to final survey.
Some units have been selected for upgrading. Please refer to upgraded plans.

3-BEDROOM PENTHOUSE

TYPE C1-P (LOWER)

Unit Blk 937 #10-36

Area 2,368sqm



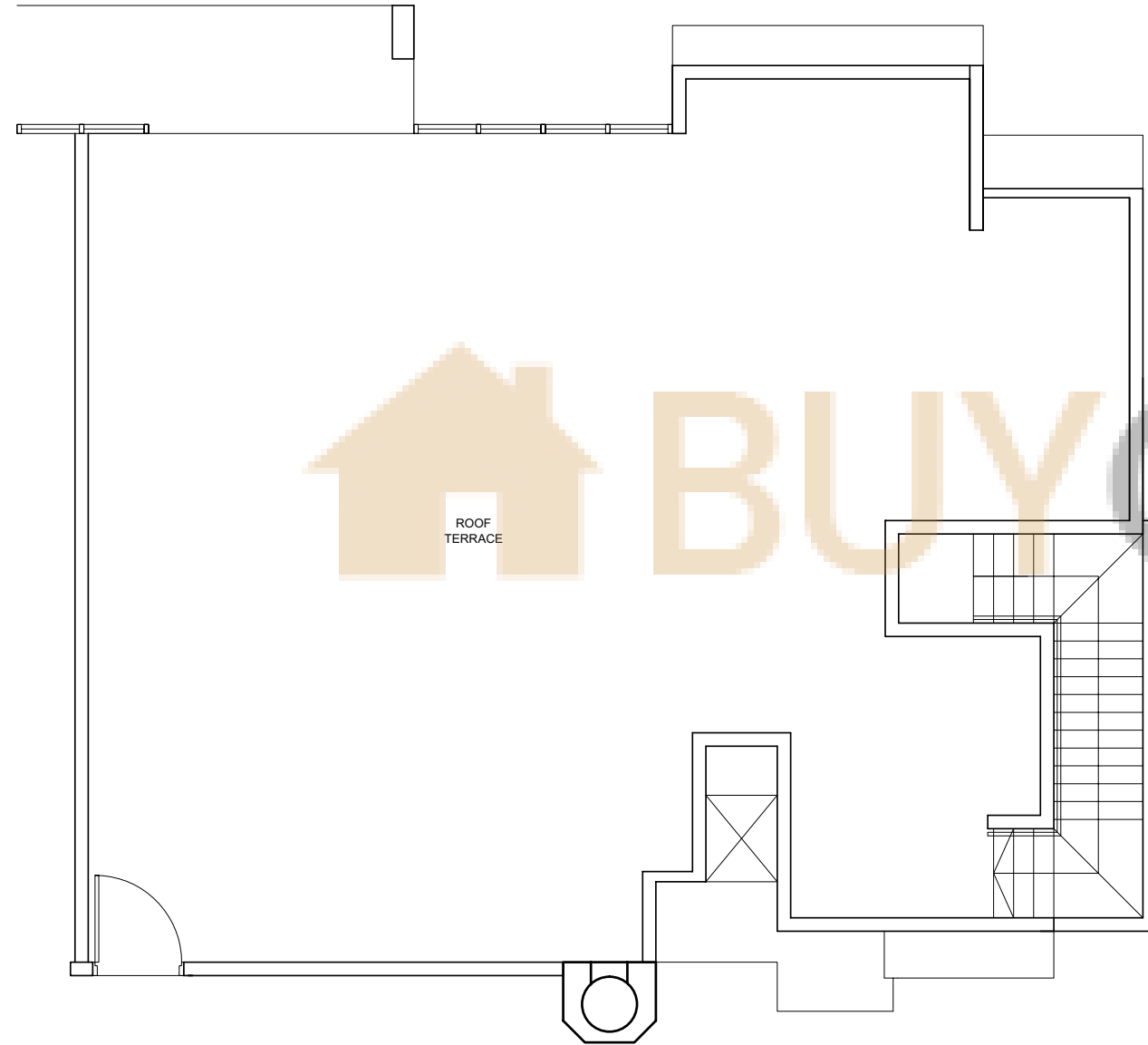
Floor areas are approximate measurements and subject to final survey.
Some units have been selected for upgrading. Please refer to upgraded plans.

3-BEDROOM PENTHOUSE

TYPE C1-P (UPPER)

Unit Blk 937 #10-36

Area 2,368sqm



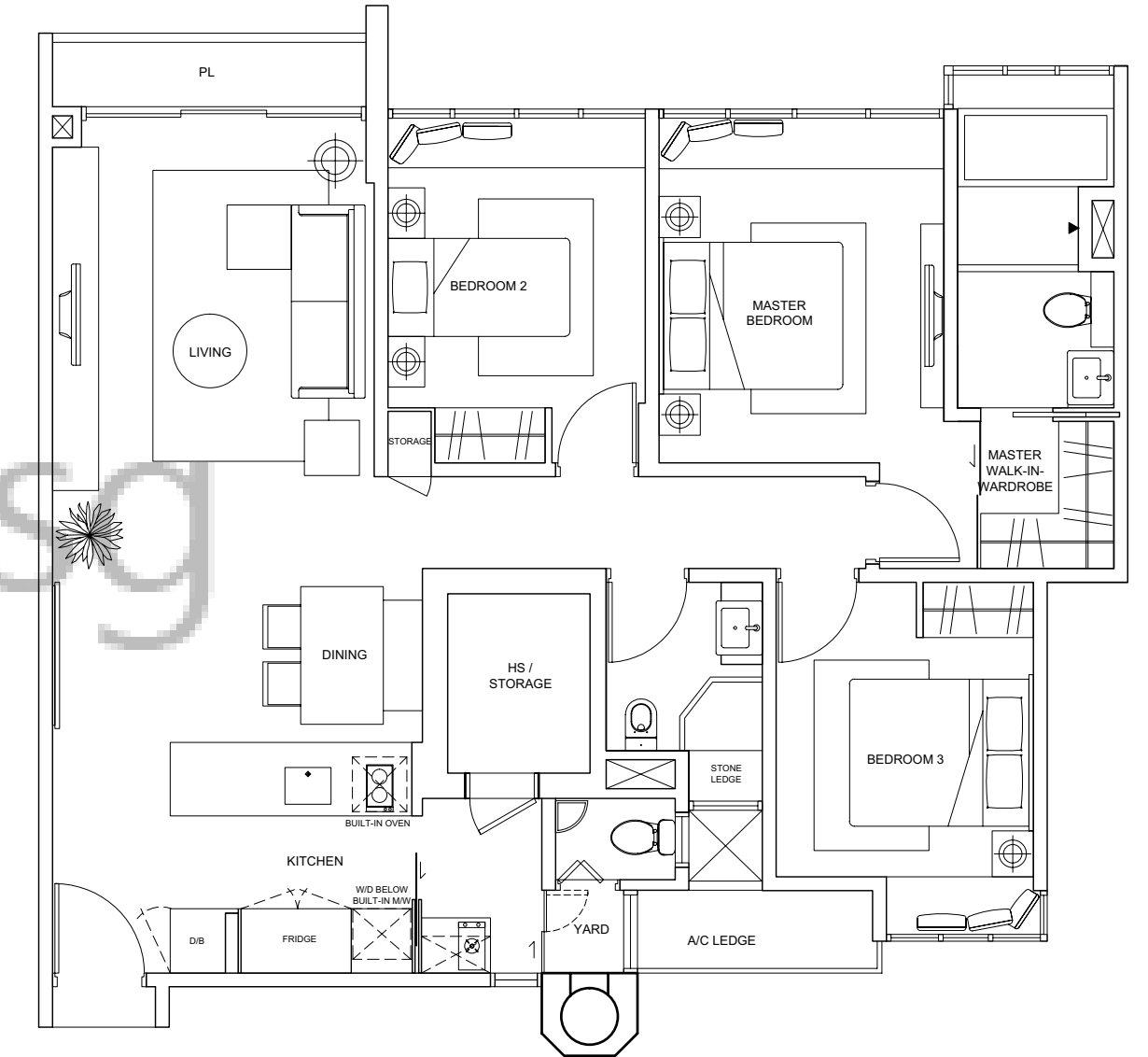
Floor areas are approximate measurements and subject to final survey.
Some units have been selected for upgrading. Please refer to upgraded plans.

3-BEDROOM APARTMENT (UPGRADED)

TYPE C2

Unit Blk 923 #02-07 TO #08-07

Area 1,173sqm



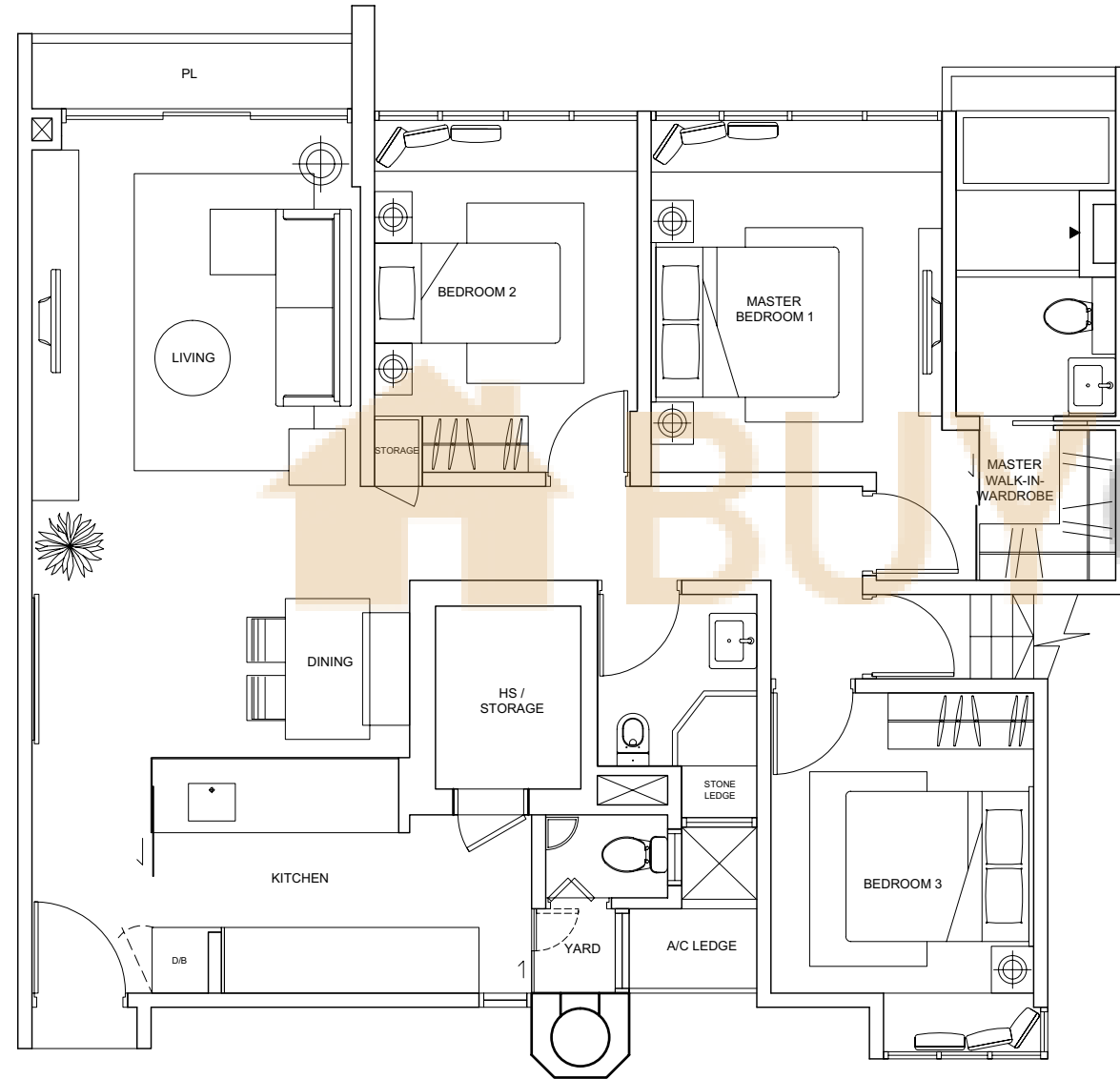
Floor areas are approximate measurements and subject to final survey.
Some units have been selected for upgrading. Please refer to upgraded plans.

3-BEDROOM PENTHOUSE

TYPE C2-P (LOWER)

Unit Blk 923 #10-07

Area 2,368sqm



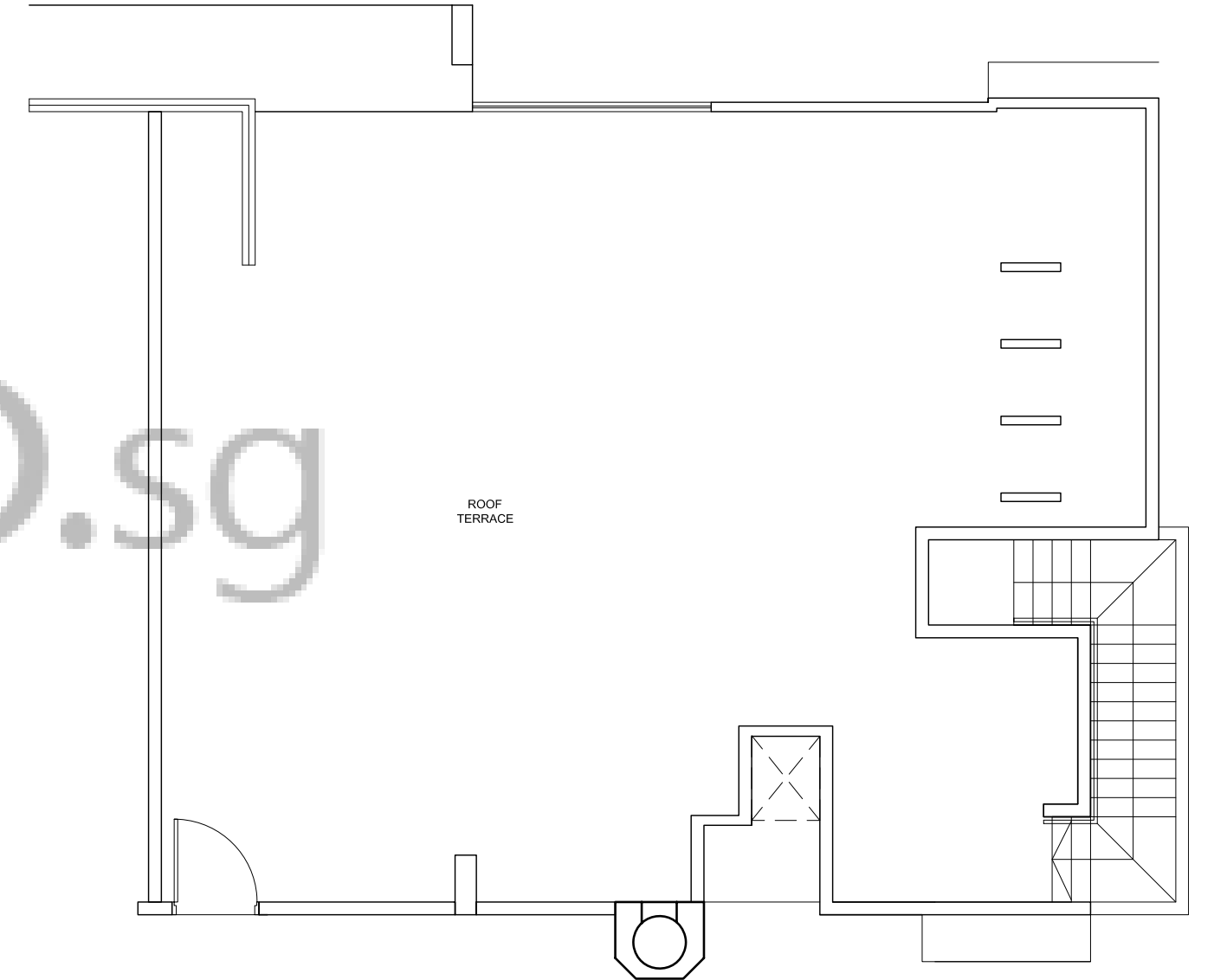
Floor areas are approximate measurements and subject to final survey.
Some units have been selected for upgrading. Please refer to upgraded plans.

3-BEDROOM PENTHOUSE

TYPE C2-P (UPPER)

Unit Blk 923 #10-07

Area 2,368sqm

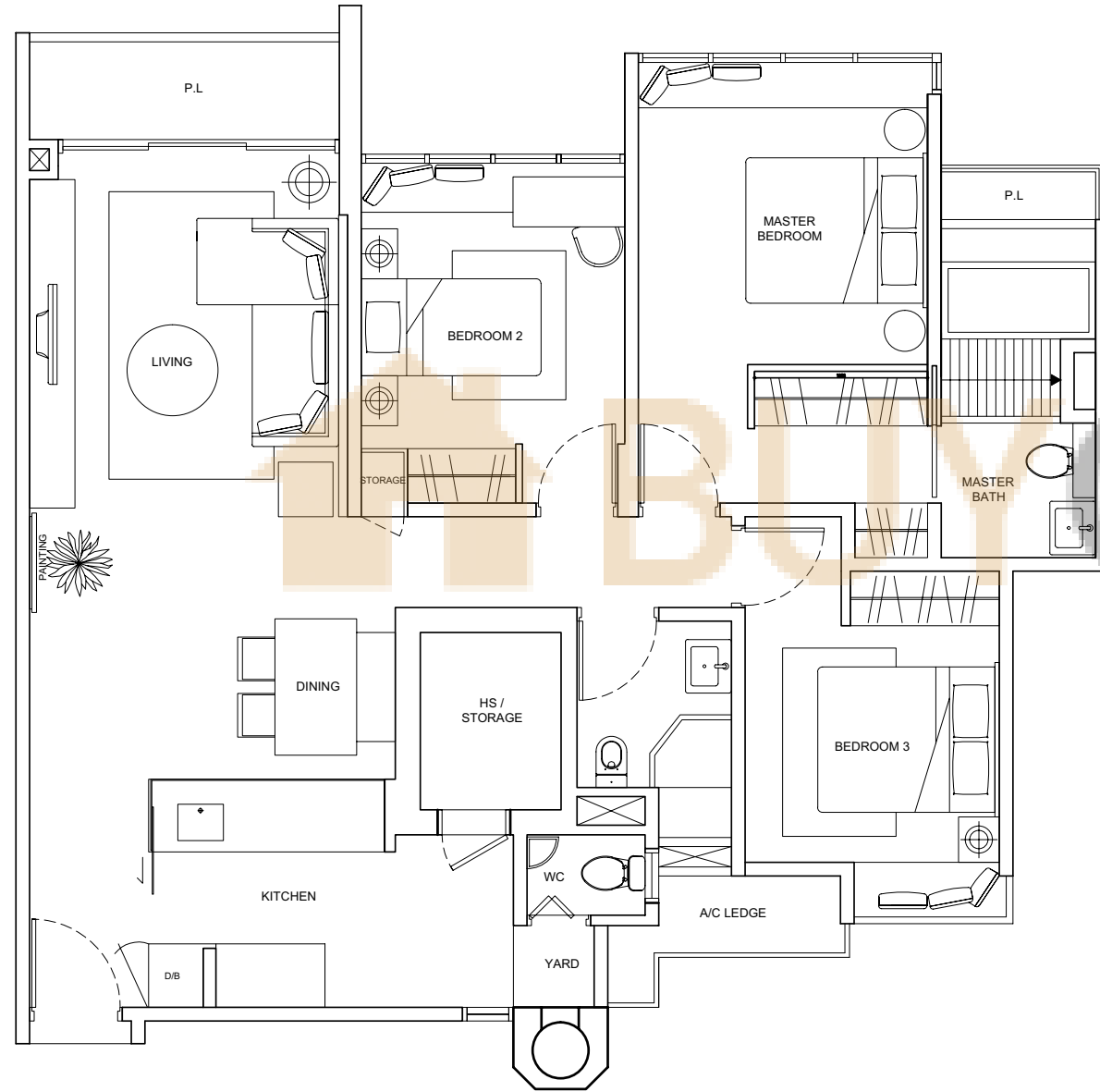


Floor areas are approximate measurements and subject to final survey.
Some units have been selected for upgrading. Please refer to upgraded plans.

3-BEDROOM APARTMENT

TYPE C3

Unit Blk 937 #02-38 TO #08-38
Area 1,184sqm

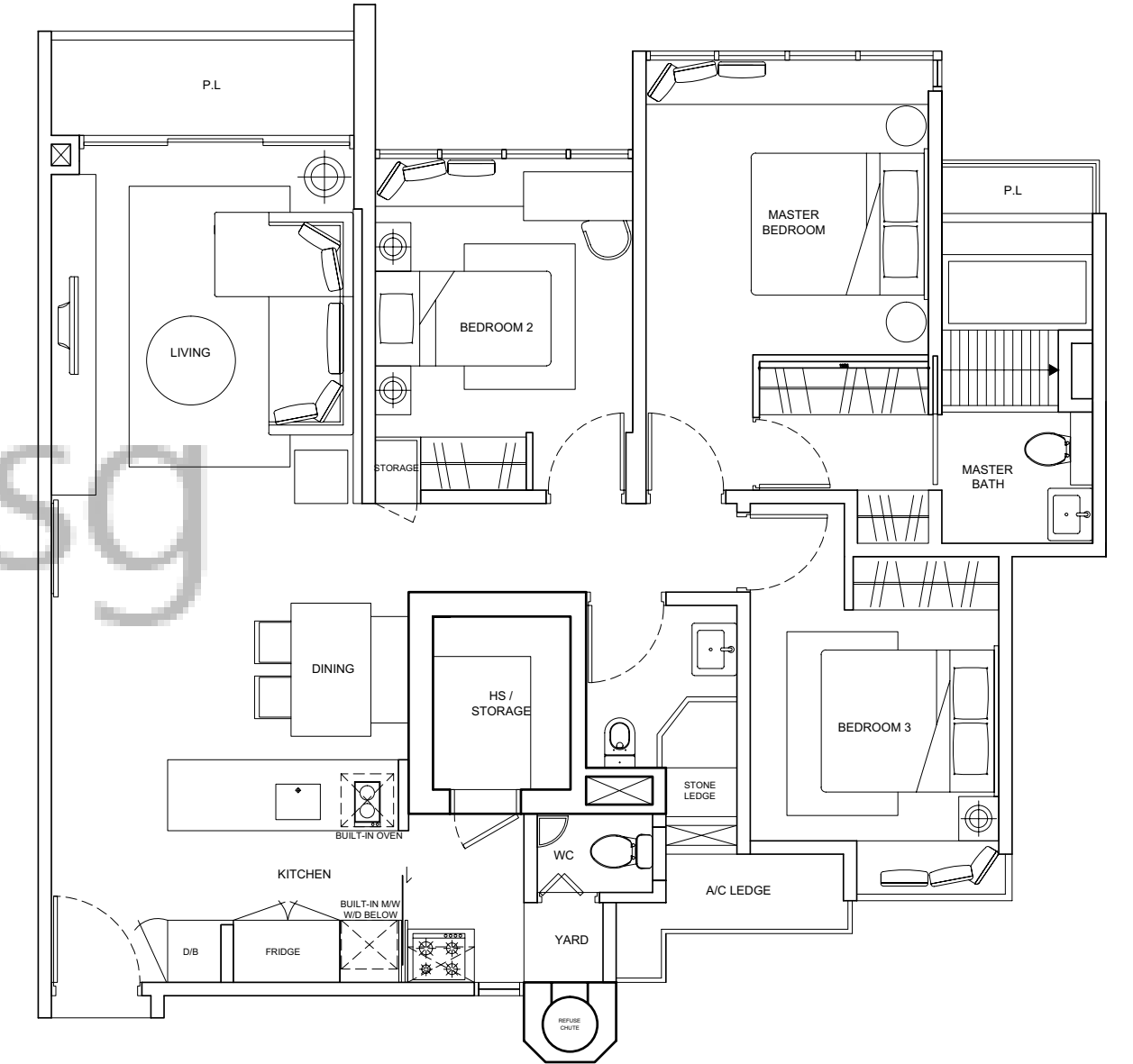


Floor areas are approximate measurements and subject to final survey.
Some units have been selected for upgrading. Please refer to upgraded plans.

3-BEDROOM APARTMENT (UPGRADED)

TYPE C3

Unit Blk 937 #02-38 TO #08-38
(for selected units)
Area 1,184sqm

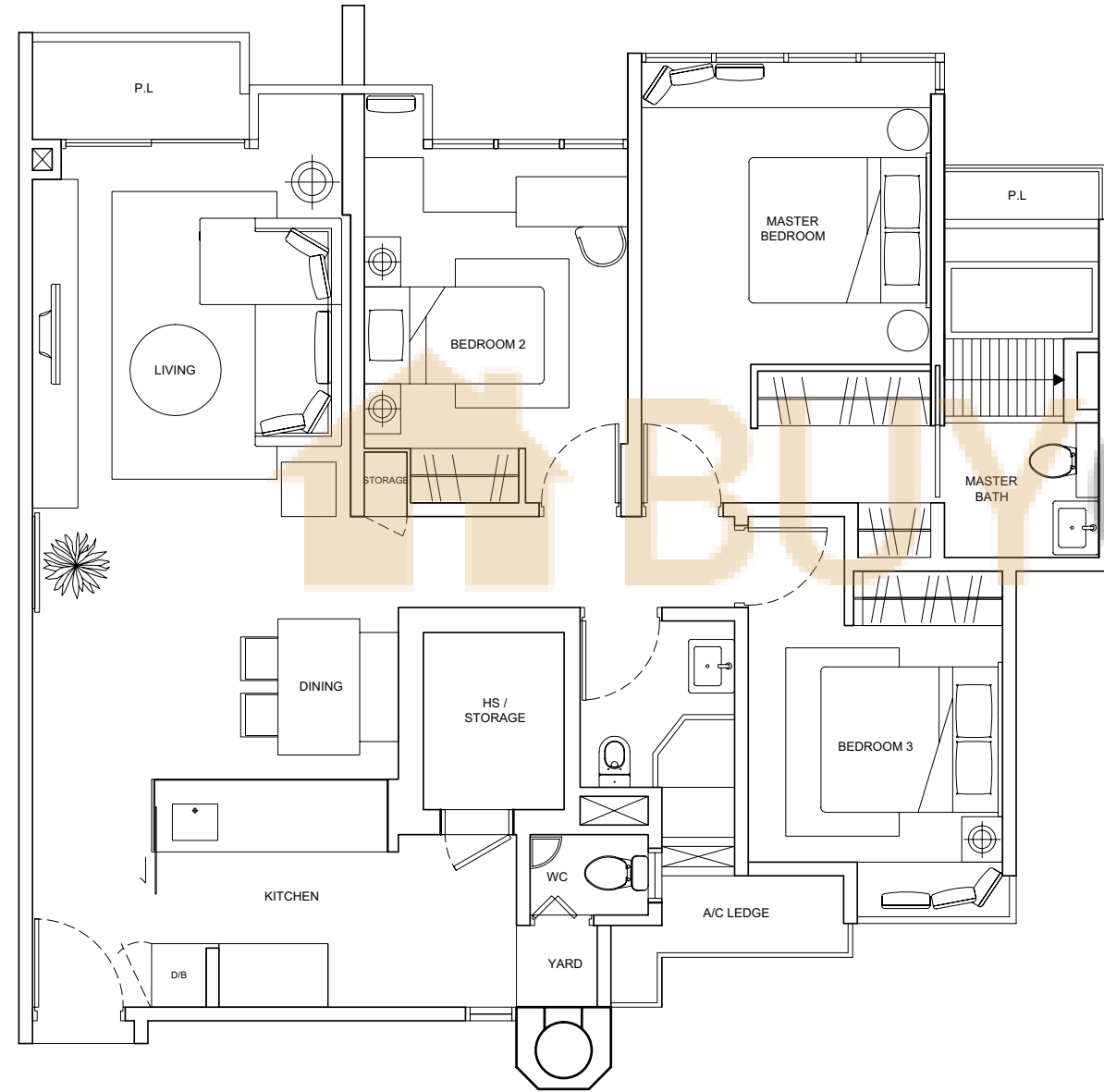


Floor areas are approximate measurements and subject to final survey.
Some units have been selected for upgrading. Please refer to upgraded plans.

3-BEDROOM APARTMENT

TYPE C3-B

Unit Blk 937 #09-38
Area 1,184sqm

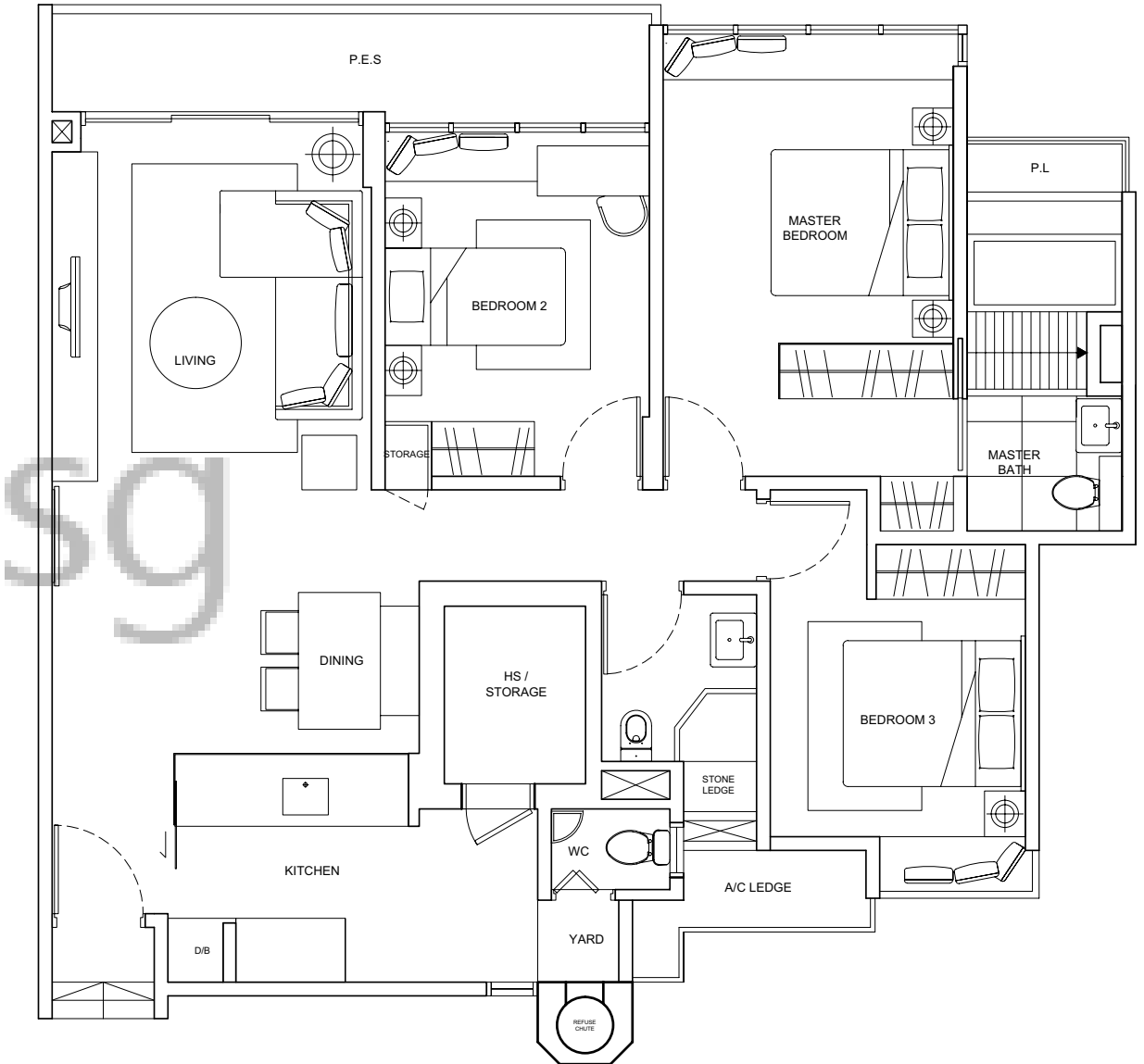


Floor areas are approximate measurements and subject to final survey.
Some units have been selected for upgrading. Please refer to upgraded plans.

3-BEDROOM APARTMENT WITH PES

TYPE C3-A

Unit Blk 937 #01-38
Area 1,249sqm

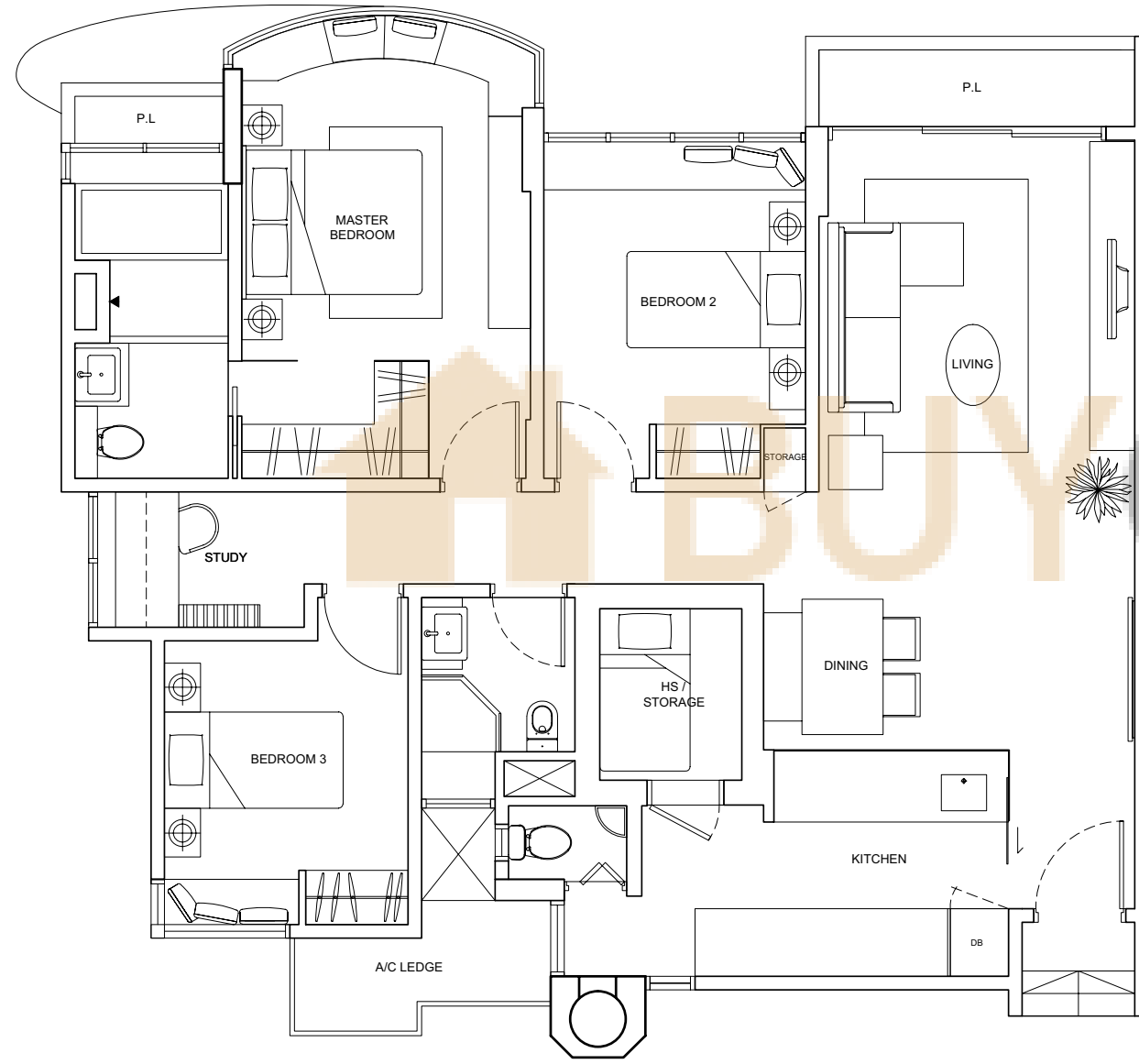


Floor areas are approximate measurements and subject to final survey.
Some units have been selected for upgrading. Please refer to upgraded plans.

3-BEDROOM APARTMENT WITH STUDY

TYPE C3S

Unit Blk 925 #02-10 TO #09-10
Area 1,238sqm

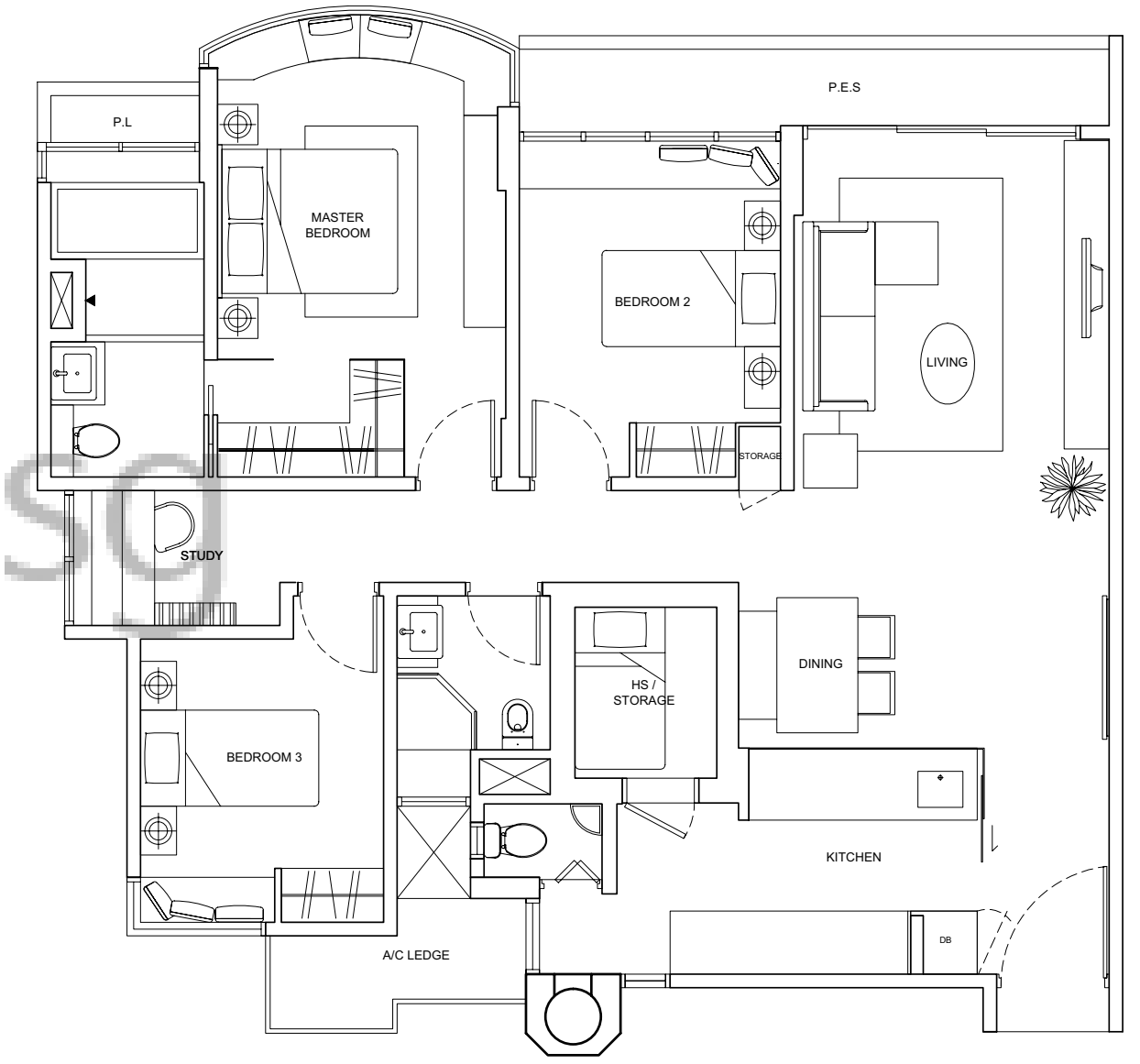


Floor areas are approximate measurements and subject to final survey.
Some units have been selected for upgrading. Please refer to upgraded plans.

3-BEDROOM APARTMENT WITH STUDY & PES

TYPE C3S-A

Unit Blk 925 #01-10
Area 1,292sqm



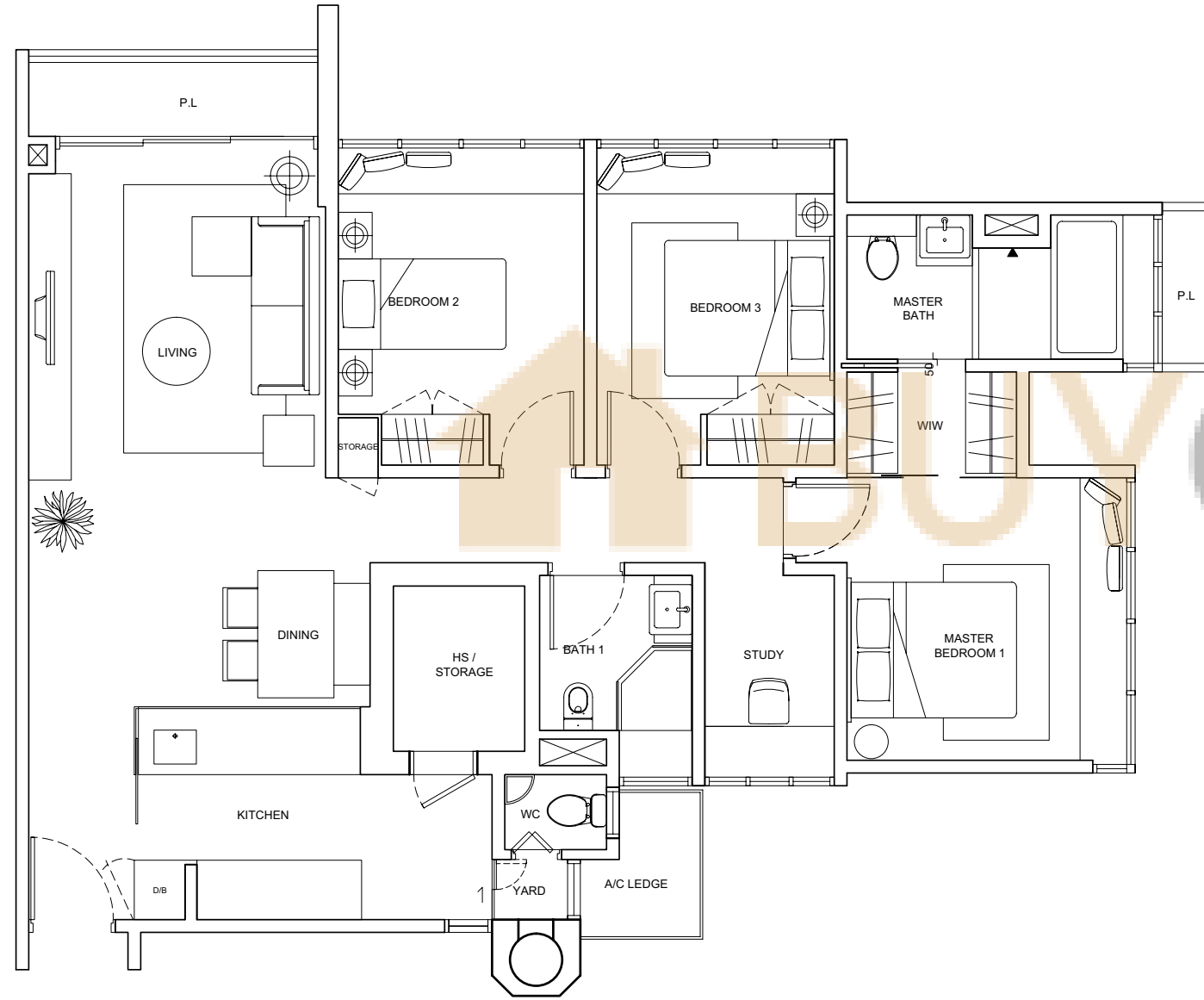
Floor areas are approximate measurements and subject to final survey.
Some units have been selected for upgrading. Please refer to upgraded plans.

3-BEDROOM APARTMENT WITH STUDY

TYPE C4S

Unit Blk 923 #02-09 TO #09-09

Area 1,216sqm



Floor areas are approximate measurements and subject to final survey.
Some units have been selected for upgrading. Please refer to upgraded plans.

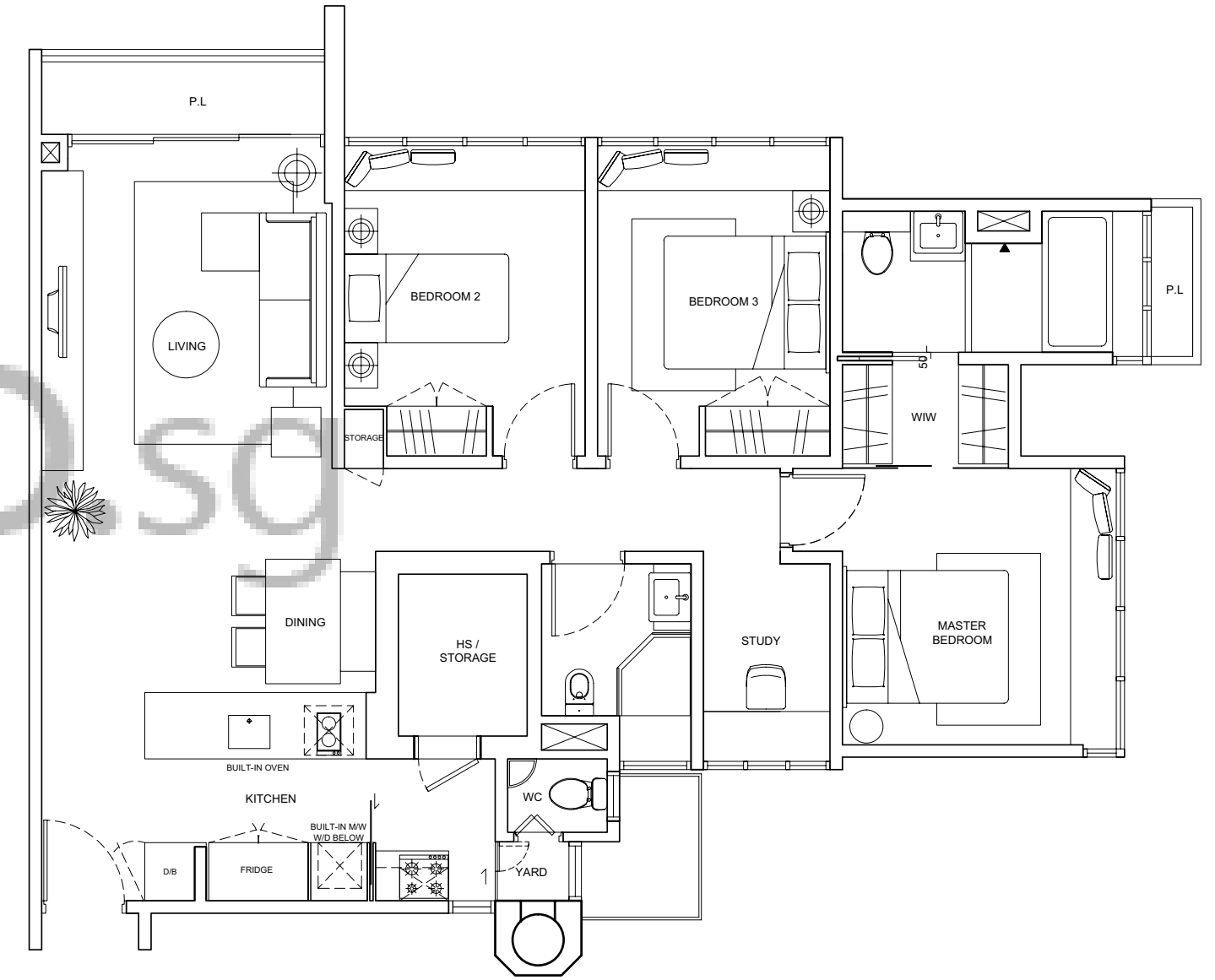
3-BEDROOM APARTMENT WITH STUDY (UPGRADED)

TYPE C4S

Unit Blk 923 #02-09 TO #09-09

(for selected units)

Area 1,216sqm

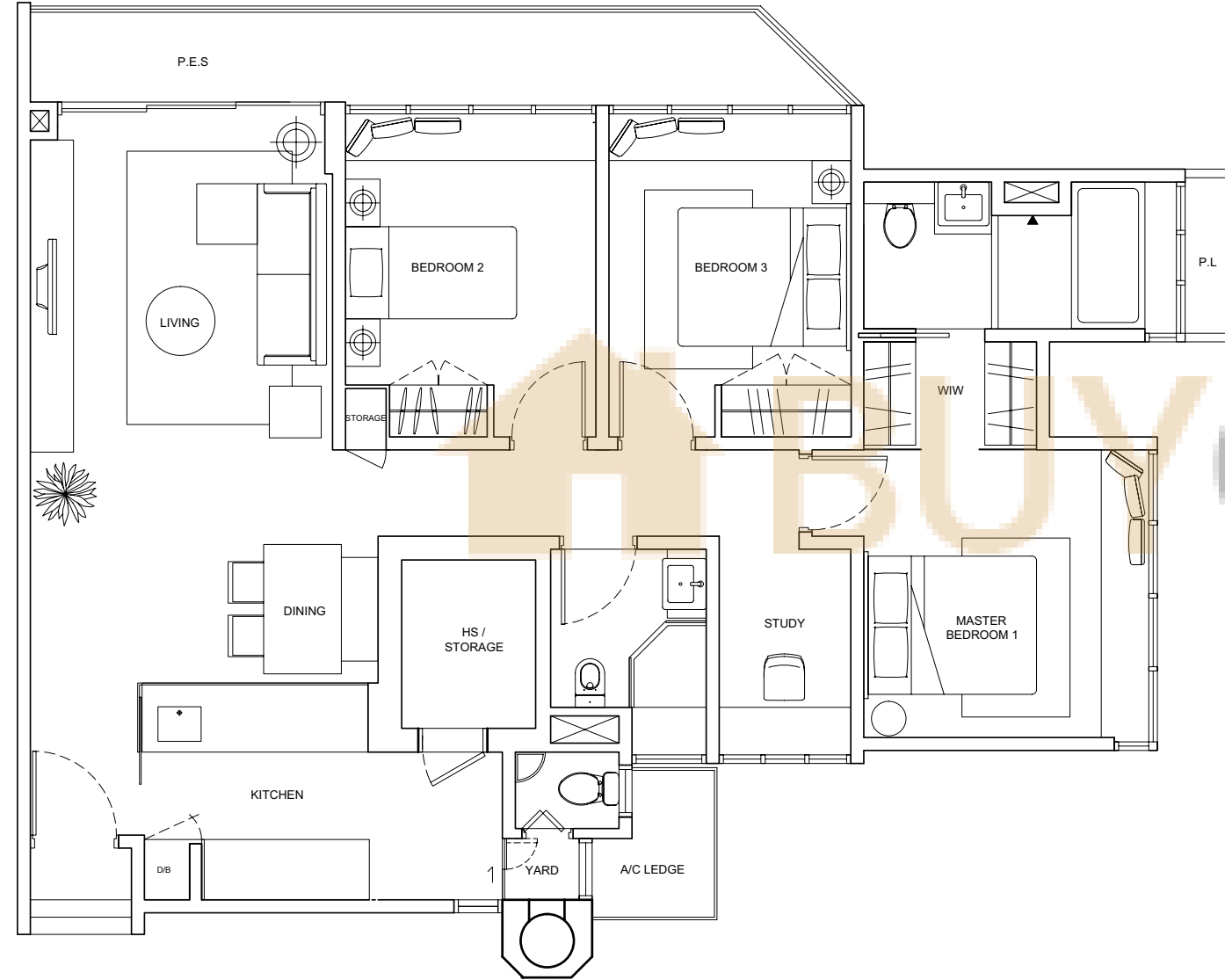


Floor areas are approximate measurements and subject to final survey.
Some units have been selected for upgrading. Please refer to upgraded plans.

3-BEDROOM APARTMENT WITH STUDY & PES

TYPE C4S-A

Unit Blk 923 #01-09
Area 1,302sqm

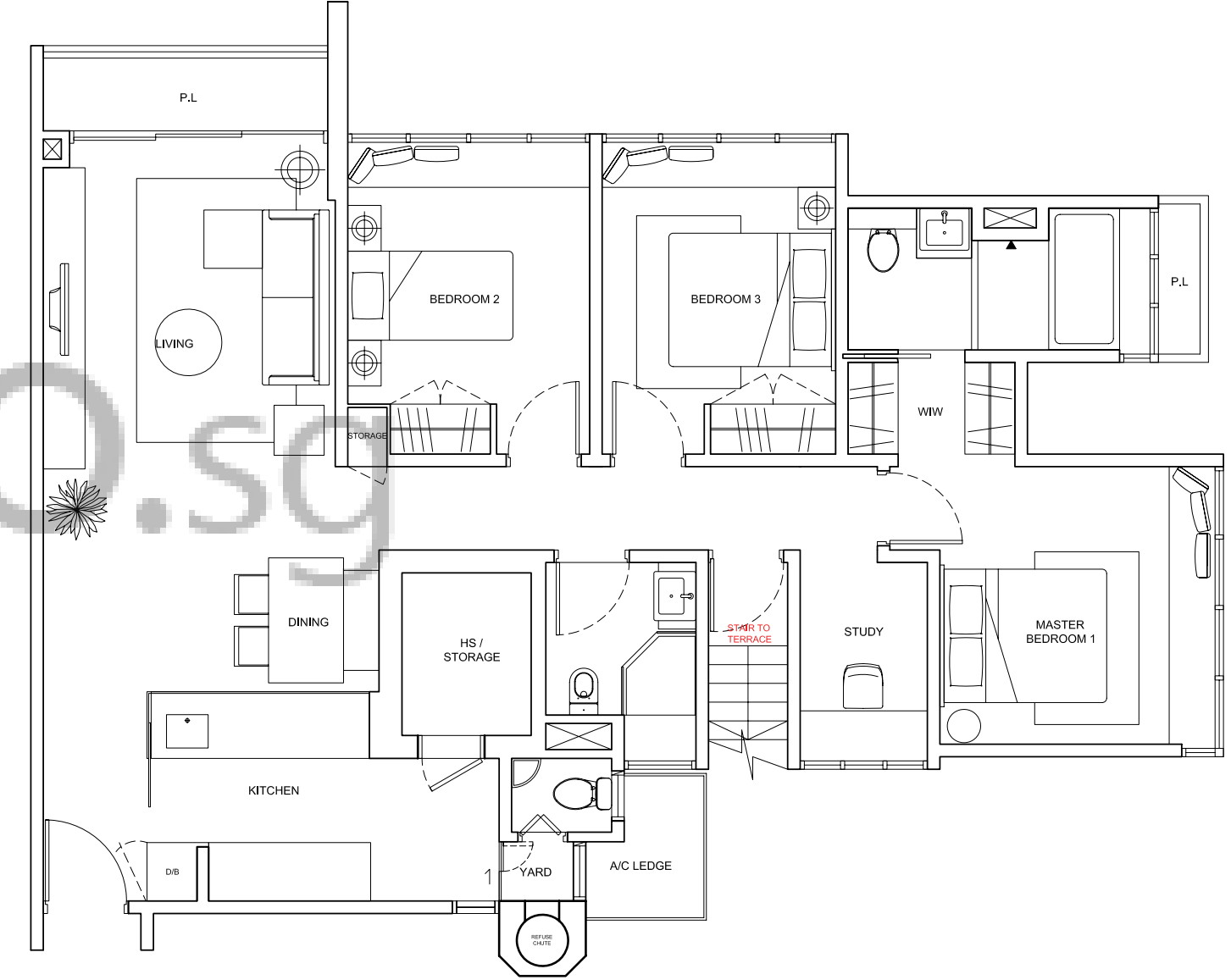


Floor areas are approximate measurements and subject to final survey.
Some units have been selected for upgrading. Please refer to upgraded plans.

3-BEDROOM PENTHOUSE WITH STUDY

TYPE C4S-P (LOWER)

Unit Blk 923 #10-09
Area 2,465sqm

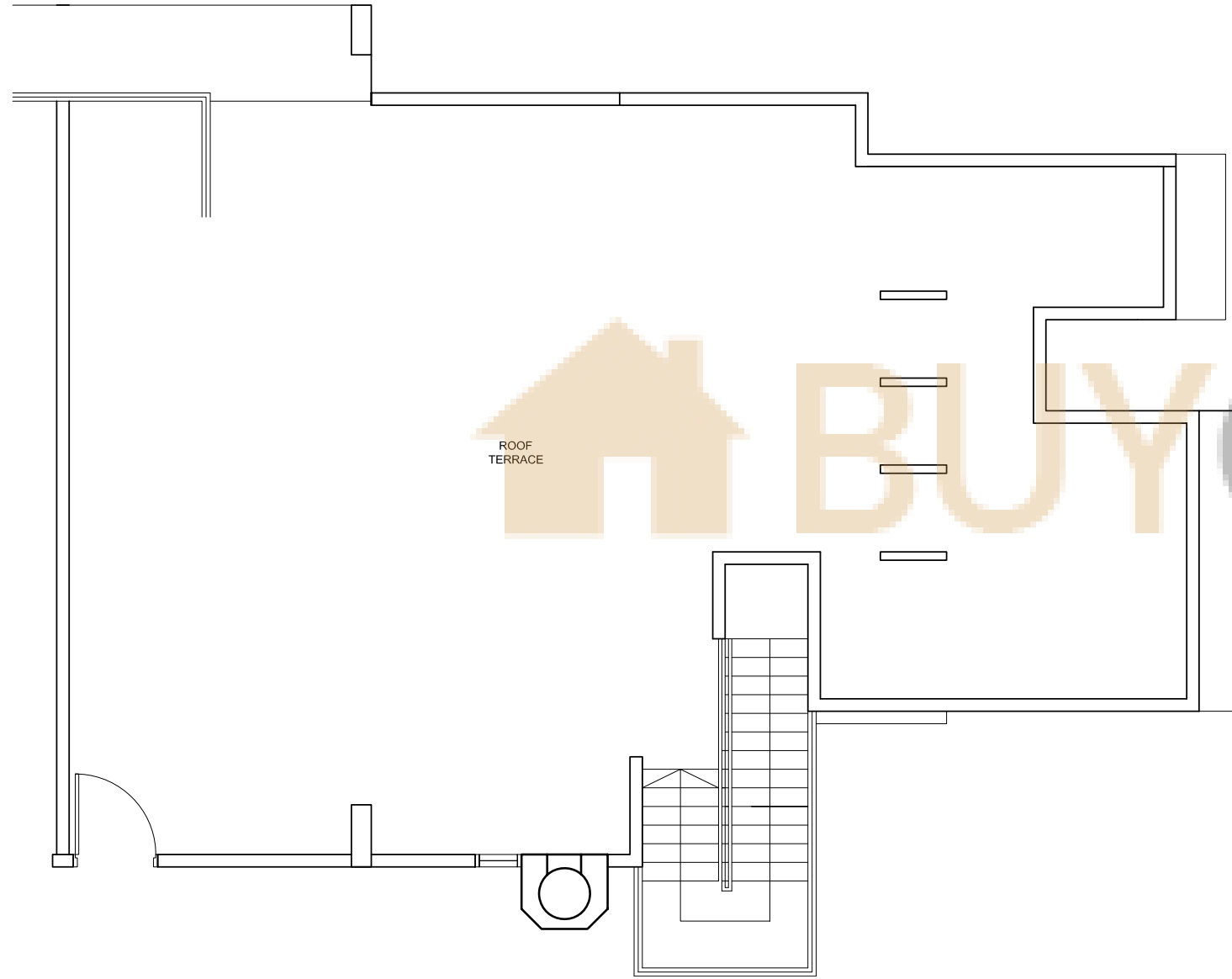


Floor areas are approximate measurements and subject to final survey.
Some units have been selected for upgrading. Please refer to upgraded plans.

3-BEDROOM PENTHOUSE WITH STUDY

TYPE C4S-P (UPPER)

Unit Blk 923 #10-09
Area 2,465sqm

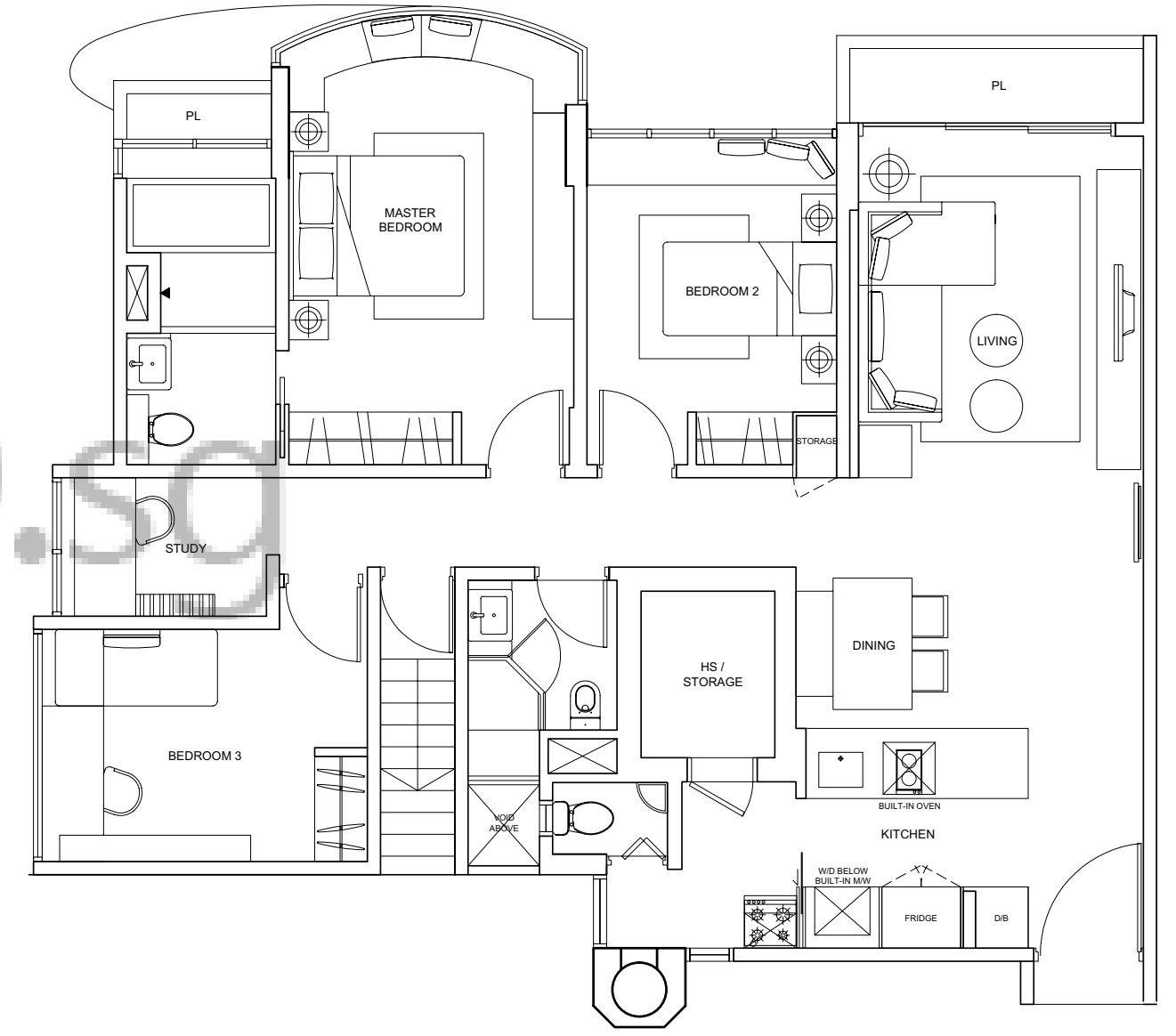


Floor areas are approximate measurements and subject to final survey.
Some units have been selected for upgrading. Please refer to upgraded plans.

3-BEDROOM PENTHOUSE WITH STUDY (UPGRADED)

TYPE C5S-P (LOWER)

Unit Blk 923 #10-06
Area 2,519sqm



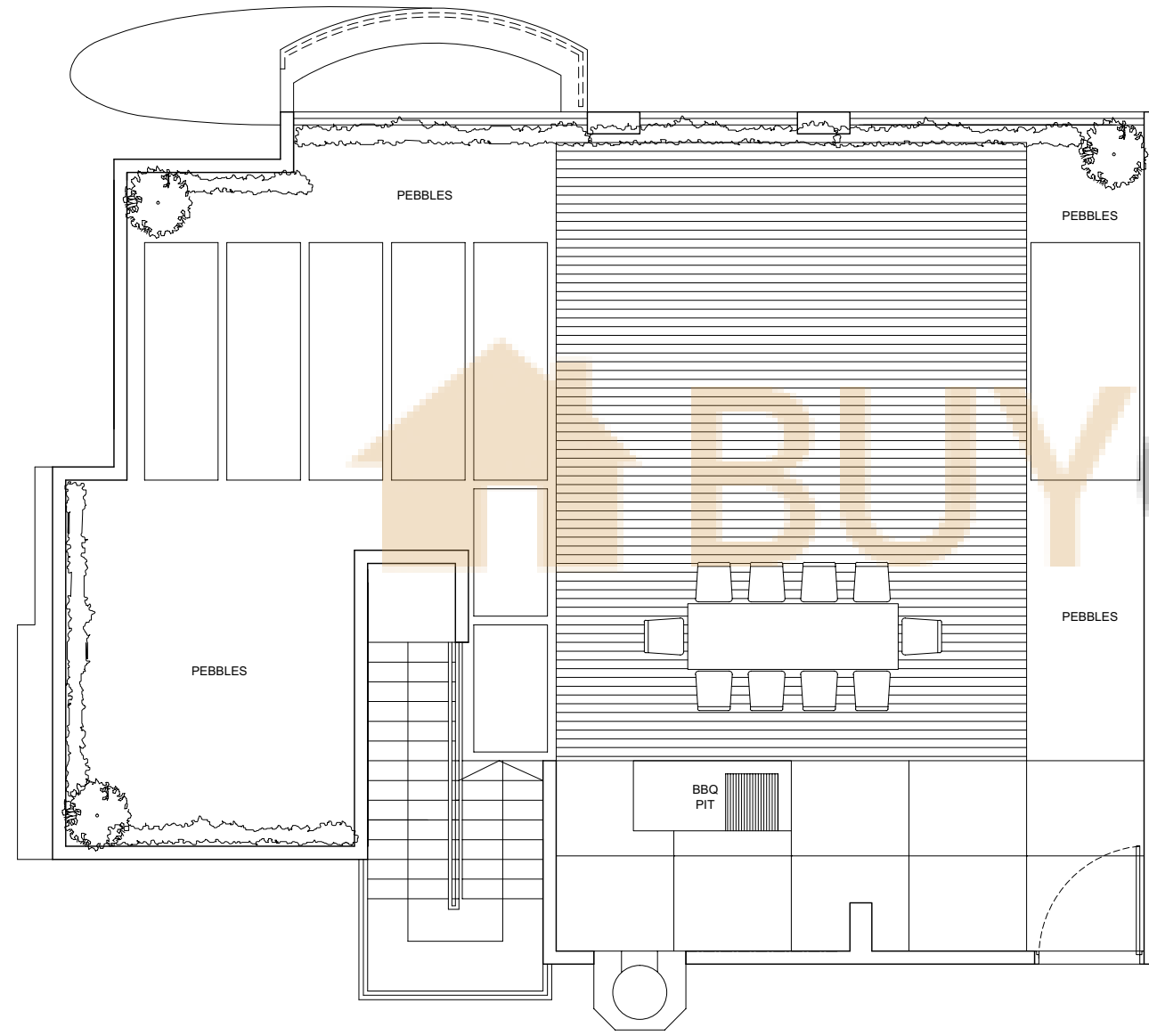
Floor areas are approximate measurements and subject to final survey.
Some units have been selected for upgrading. Please refer to upgraded plans.

3-BEDROOM PENTHOUSE WITH STUDY (UPGRADED)

TYPE C5S-P (UPPER)

Unit Blk 923 #10-06

Area 2,519sqm



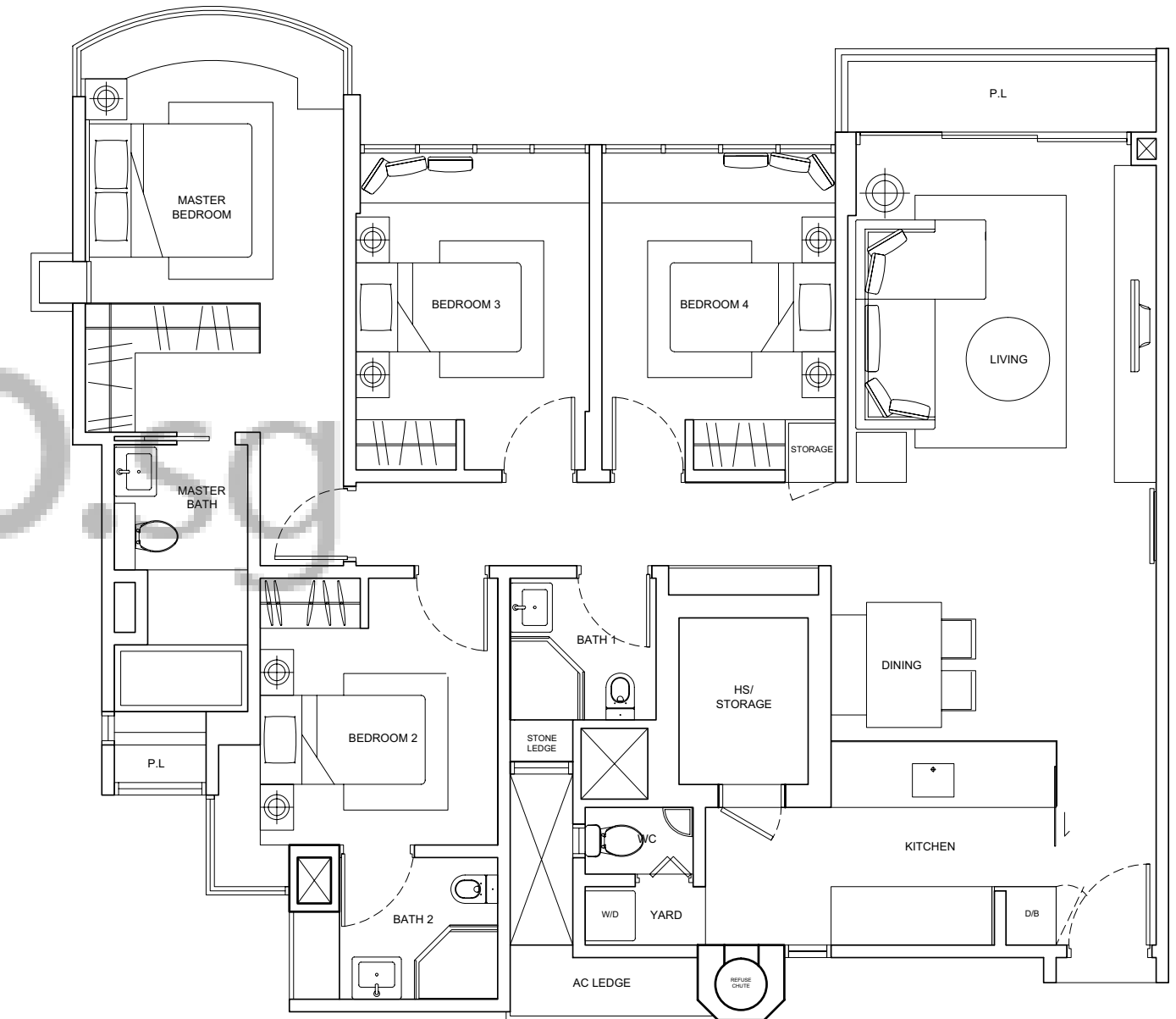
Floor areas are approximate measurements and subject to final survey.
Some units have been selected for upgrading. Please refer to upgraded plans.

4-BEDROOM APARTMENT

TYPE D3

Unit Blk 937 #02-37 TO #09-37

Area 1,421sqm



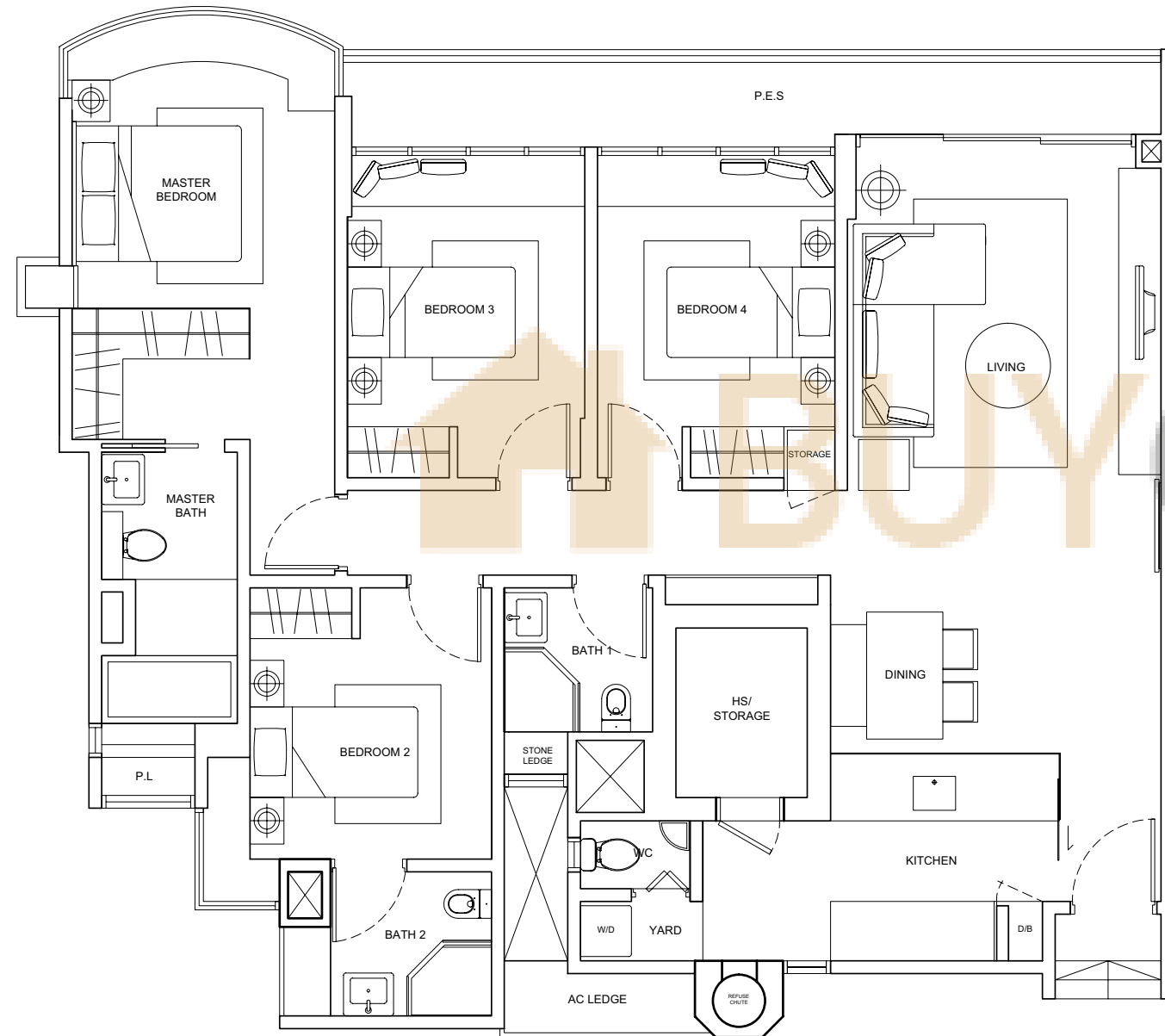
Floor areas are approximate measurements and subject to final survey.
Some units have been selected for upgrading. Please refer to upgraded plans.

4-BEDROOM APARTMENT WITH PES

TYPE D3-A

Unit Blk 937 #01-37

Area 1,496sqm



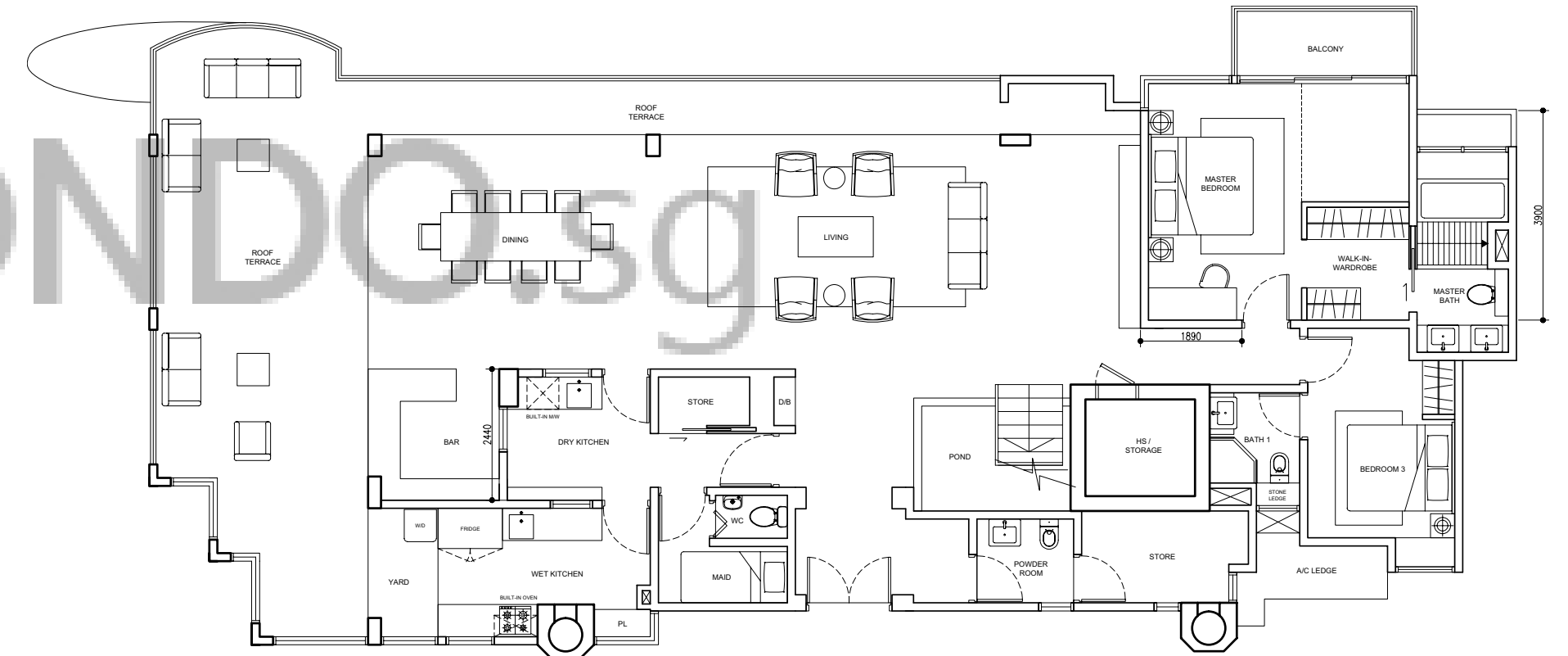
Floor areas are approximate measurements and subject to final survey.
Some units have been selected for upgrading. Please refer to upgraded plans.

3-BEDROOM PENTHOUSE WITH STUDY & ROOF TERRACE

TYPE PH2 (LOWER)

Unit Blk 937 #10-37

Area 421sqm



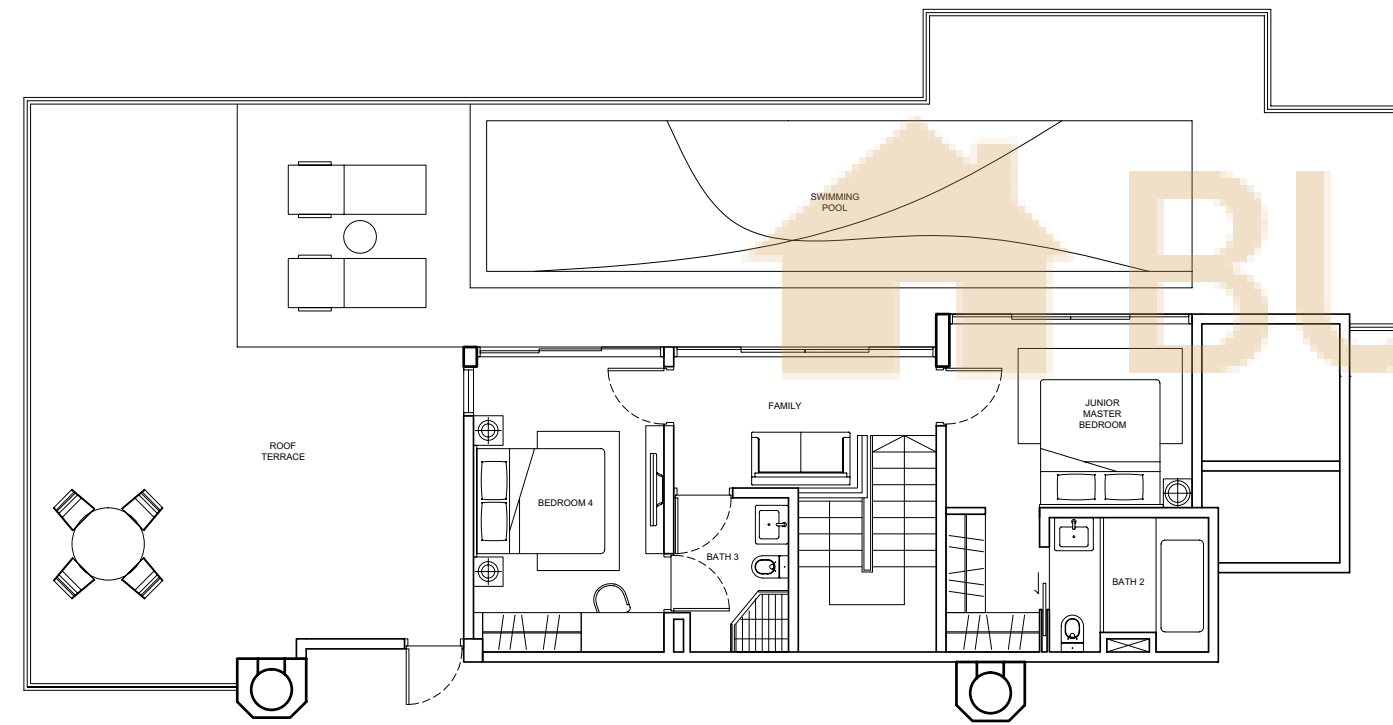
Floor areas are approximate measurements and subject to final survey.
Some units have been selected for upgrading. Please refer to upgraded plans.

3-BEDROOM PENTHOUSE WITH STUDY & ROOF TERRACE

TYPE PH2 (UPPER)

Unit Blk 937 #10-37

Area 421sqm



Another redefined product brought to you by:



Cassy Gardens (AMT) Pte Ltd

The statements and information provided in this brochure shall not be relied upon as statements or representations of fact and are not intended to form any part of the contract for the sale of the property. Visual representations such as pictures, photographs and drawings are artist's impressions only and are not statements of fact. All information contained in this brochure, including plans and specifications may be subject to change. Cassy Gardens (AMT) Pte Ltd makes no representation, warranty, undertaking or agreement whatsoever with regard to the accuracy, correctness and completeness of any information contained herein. Cassy Gardens (AMT) Pte Ltd is not an agent, representative or employee of the Developer, Boonridge Pte Ltd.

Floor areas are approximate measurements and subject to final survey. Some units have been selected for upgrading. Please refer to upgraded plans.