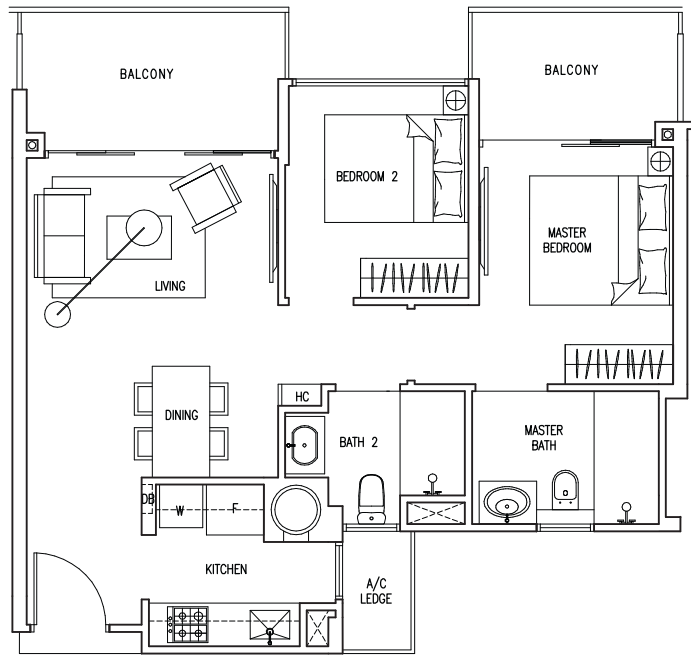


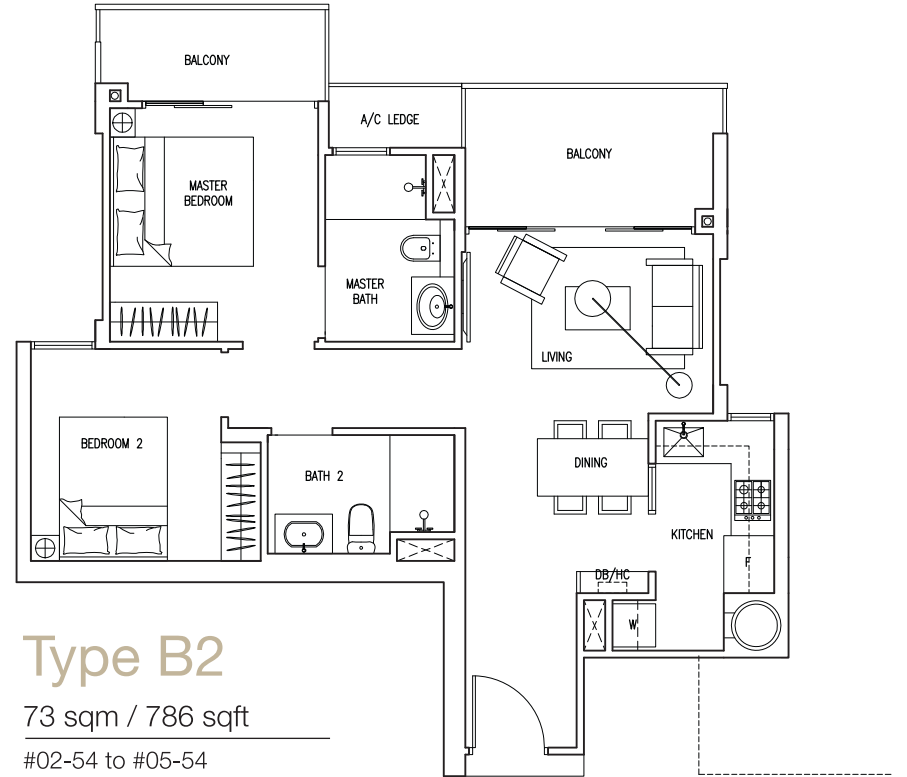
# 2 BEDROOM



## Type B1

71 sqm / 764 sqft

- #02-02 to #05-02
  - #02-16 to #05-16
  - #02-95 to #05-95
  - #02-101 to #05-101
  - #02-13 to #05-13
  - #02-27 to #05-27
  - #02-89 to #05-89
  - #02-92 to #05-92
- (Mirrored units)

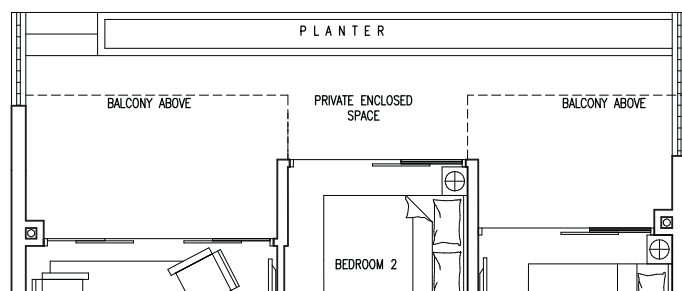


## Type B2

73 sqm / 786 sqft

- #02-54 to #05-54
- #02-81 to #05-81
- #02-97 to #05-97

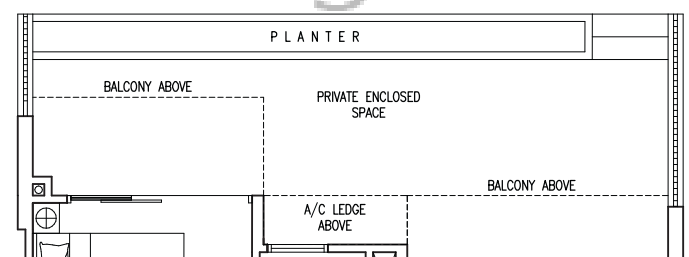
BUYCONDO.sg



## Type B1 (P)

85 sqm / 915 sqft

- #01-02
  - #01-16
  - #01-95
  - #01-101
  - #01-13
  - #01-27
  - #01-89
  - #01-92
- (Mirrored units)



## Type B2 (P)

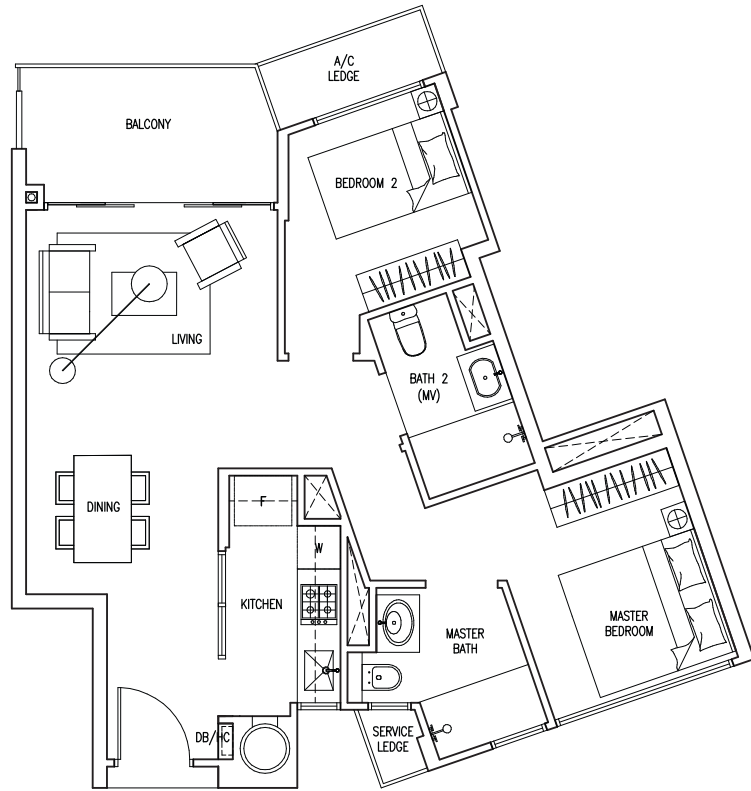
93 sqm / 1,001 sqft

- #01-54
- #01-81
- #01-97



The plans are subject to change as may be required or approved by the relevant authorities. These are not drawn to scale and are for the purpose of a visual representation of the different layouts that are available. All areas are approximate and subject to final survey. The developer and its agents cannot be held liable for any inaccuracies.

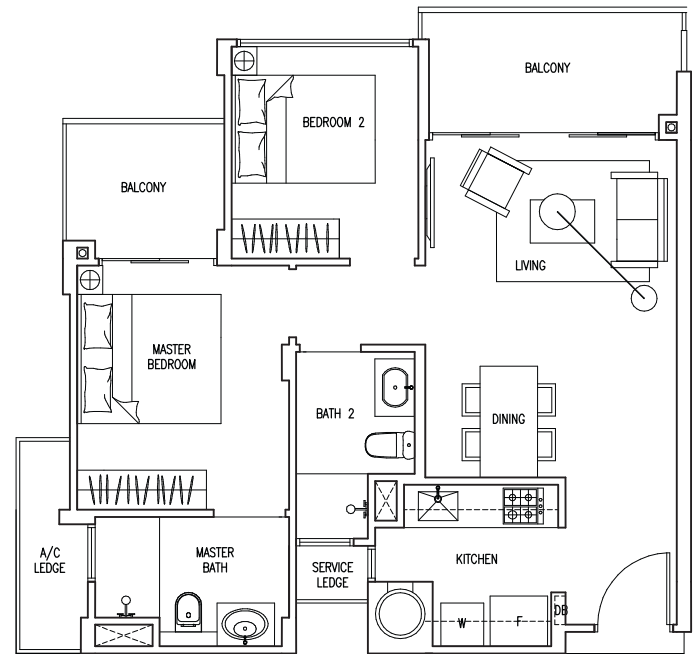
# 2 BEDROOM



## Type B3

71 sqm / 764 sqft

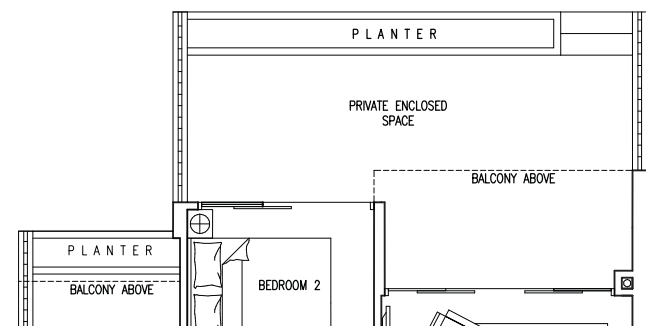
#02-67 to #05-67



## Type B4

71 sqm / 764 sqft

#02-99 to #05-99

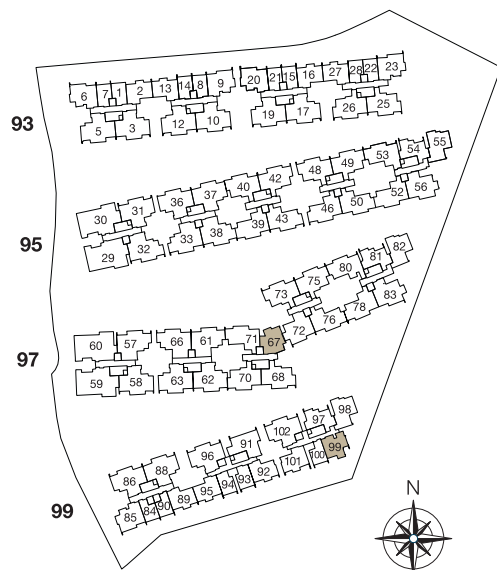


## Type B4 (P)

88 sqm / 947 sqft

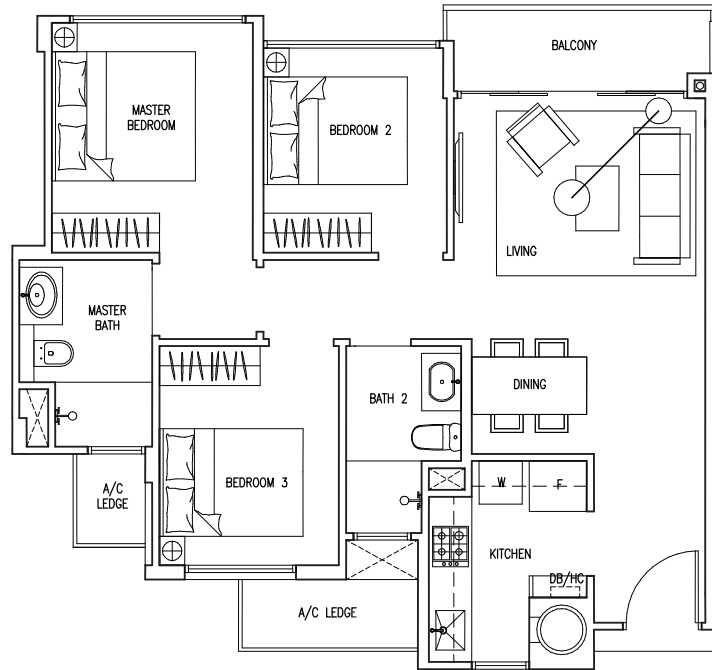
#01-99

(service ledge not applicable)



The plans are subject to change as may be required or approved by the relevant authorities. These are not drawn to scale and are for the purpose of a visual representation of the different layouts that are available. All areas are approximate and subject to final survey. The developer and its agents cannot be held liable for any inaccuracies.

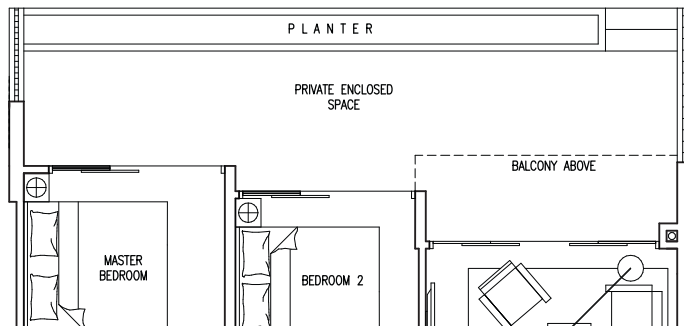
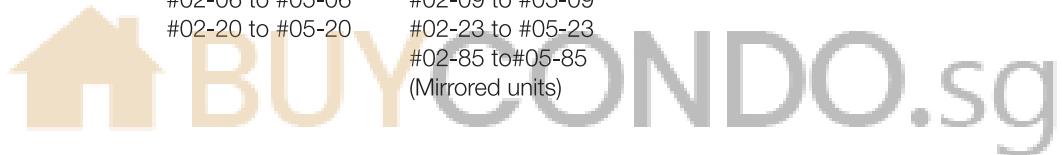
# 3 BEDROOM



## Type C1

77 sqm / 829 sqft

#02-06 to #05-06      #02-09 to #05-09  
 #02-20 to #05-20      #02-23 to #05-23  
 #02-85 to #05-85  
 (Mirrored units)



## Type C1 (P)

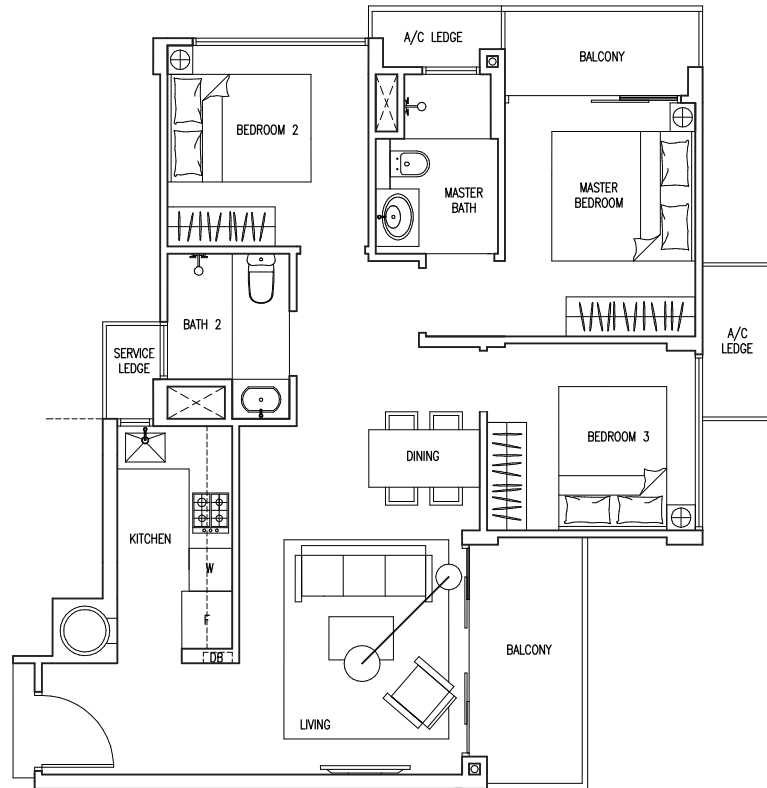
98 sqm / 1,055 sqft

#01-06      #01-09  
 #01-20      #01-85  
 (Mirrored units)



The plans are subject to change as may be required or approved by the relevant authorities.  
 These are not drawn to scale and are for the purpose of a visual representation of the different layouts that are available.  
 All areas are approximate and subject to final survey. The developer and its agents cannot be held liable for any inaccuracies.

# 3 BEDROOM



## Type C2

82 sqm / 883 sqft

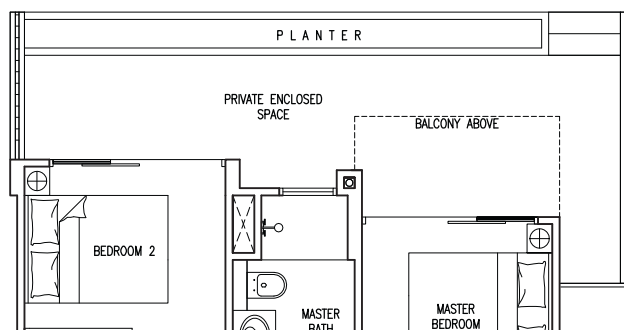
#02-55 to #05-55

#02-82 to #05-82

#02-98 to #05-98



CONDO.sg



## Type C2 (P)

104 sqm / 1,119 sqft

#01-82

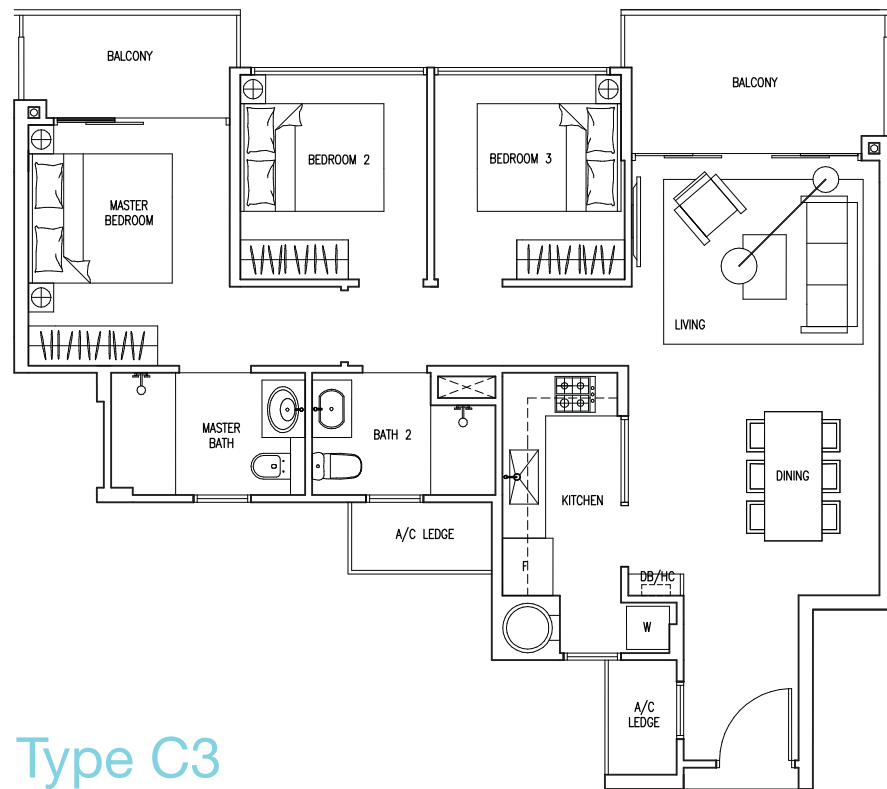
#01-98

(service ledge not applicable)



The plans are subject to change as may be required or approved by the relevant authorities. These are not drawn to scale and are for the purpose of a visual representation of the different layouts that are available. All areas are approximate and subject to final survey. The developer and its agents cannot be held liable for any inaccuracies.

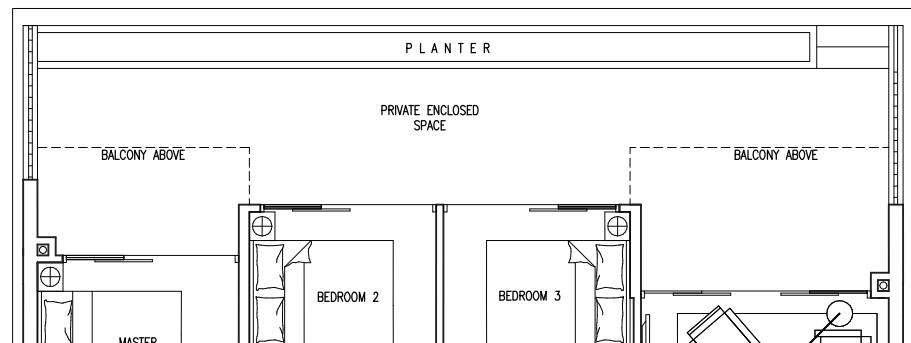
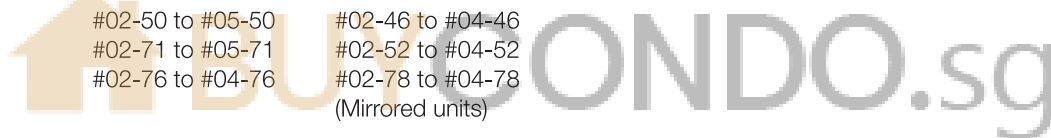
# 3 BEDROOM



## Type C3

92 sqm / 990 sqft

- |                  |                                      |
|------------------|--------------------------------------|
| #02-43 to #04-43 | #02-39 to #05-39                     |
| #02-50 to #05-50 | #02-46 to #04-46                     |
| #02-71 to #05-71 | #02-52 to #04-52                     |
| #02-76 to #04-76 | #02-78 to #04-78<br>(Mirrored units) |



## Type C3 (P)

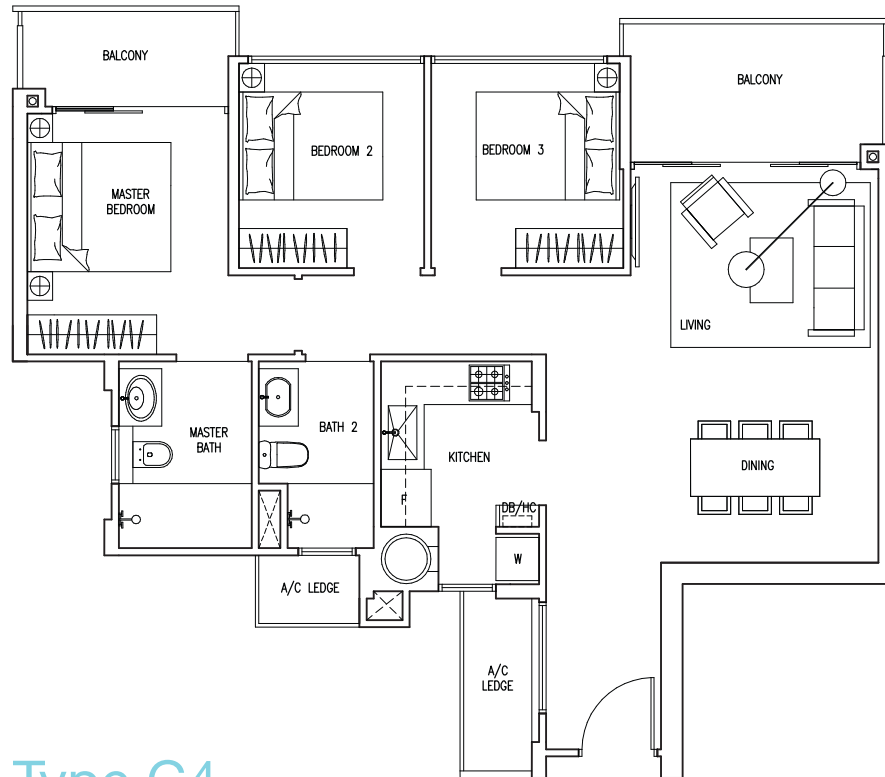
117 sqm / 1,259 sqft

- |        |                            |
|--------|----------------------------|
| #01-43 | #01-39                     |
| #01-50 | #01-46                     |
| #01-71 | #01-52                     |
| #01-76 | #01-78<br>(Mirrored units) |



The plans are subject to change as may be required or approved by the relevant authorities. These are not drawn to scale and are for the purpose of a visual representation of the different layouts that are available. All areas are approximate and subject to final survey. The developer and its agents cannot be held liable for any inaccuracies.

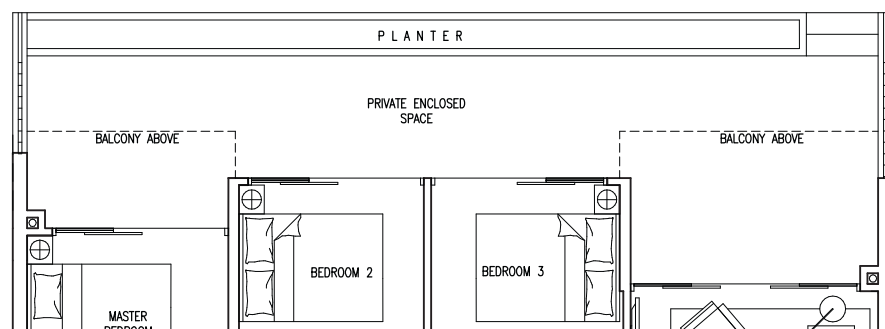
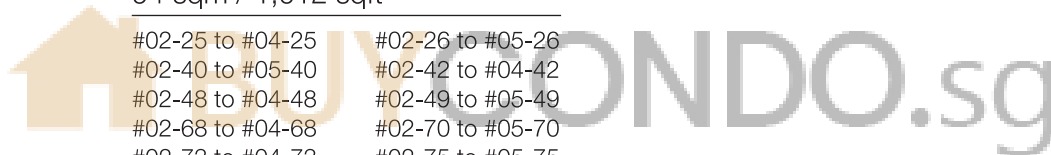
# 3 BEDROOM



## Type C4

94 sqm / 1,012 sqft

- |                  |                  |
|------------------|------------------|
| #02-25 to #04-25 | #02-26 to #05-26 |
| #02-40 to #05-40 | #02-42 to #04-42 |
| #02-48 to #04-48 | #02-49 to #05-49 |
| #02-68 to #04-68 | #02-70 to #05-70 |
| #02-73 to #04-73 | #02-75 to #05-75 |
- (Mirrored unit)



## Type C4 (P)

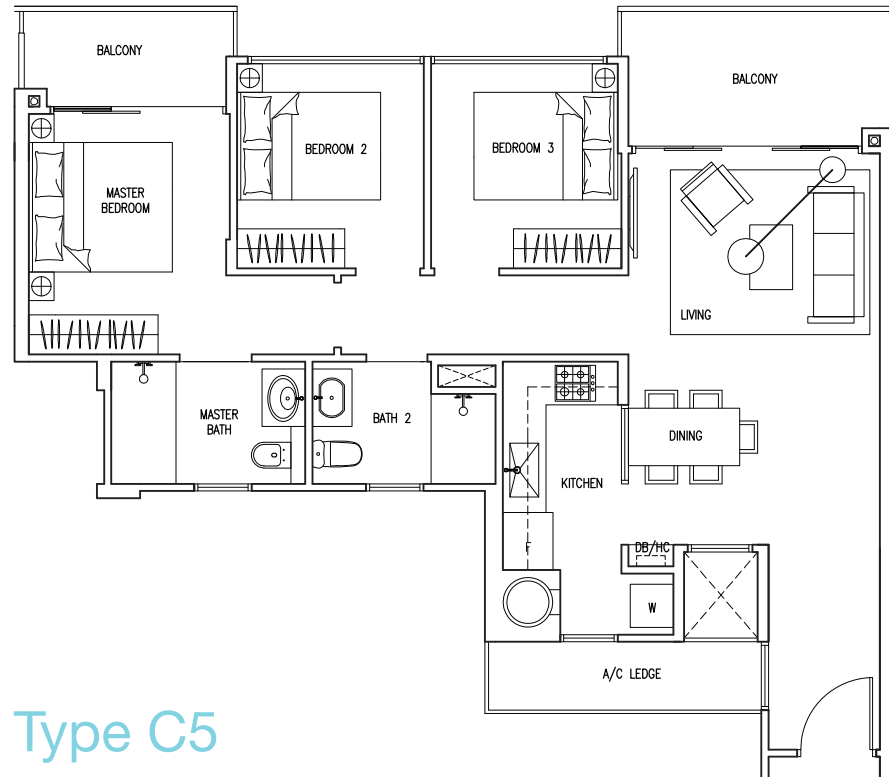
119 sqm / 1,281 sqft

- |        |        |
|--------|--------|
| #01-25 | #01-26 |
| #01-40 | #01-42 |
| #01-48 | #01-49 |
| #01-68 | #01-70 |
| #01-73 | #01-75 |
- (Mirrored units)



The plans are subject to change as may be required or approved by the relevant authorities. These are not drawn to scale and are for the purpose of a visual representation of the different layouts that are available. All areas are approximate and subject to final survey. The developer and its agents cannot be held liable for any inaccuracies.

# 3 BEDROOM

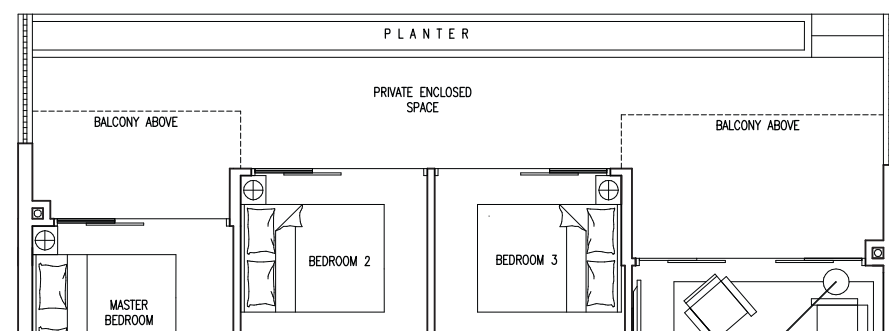


## Type C5

91 sqm / 980 sqft

#02-53 to #05-53

#02-80 to #05-80



## Type C5 (P)

115 sqm / 1,238 sqft

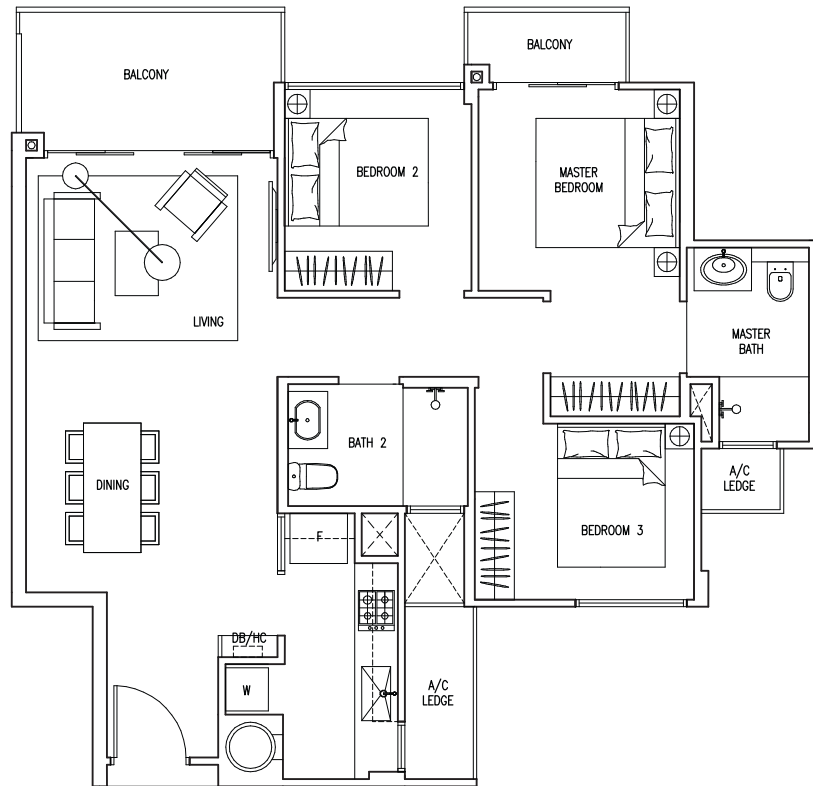
#01-53

#01-80



The plans are subject to change as may be required or approved by the relevant authorities.  
These are not drawn to scale and are for the purpose of a visual representation of the different layouts that are available.  
All areas are approximate and subject to final survey. The developer and its agents cannot be held liable for any inaccuracies.

# 3 BEDROOM



## Type C6

90 sqm / 969 sqft

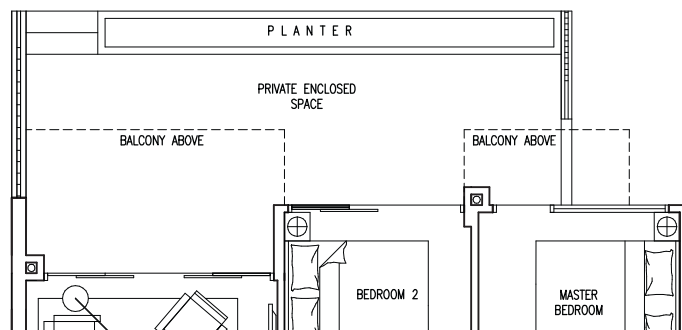
#02-72 to #05-72

#02-56 to #05-56

#02-83 to #05-83

(Mirrored unit)

# CONDO.sg



## Type C6 (P)

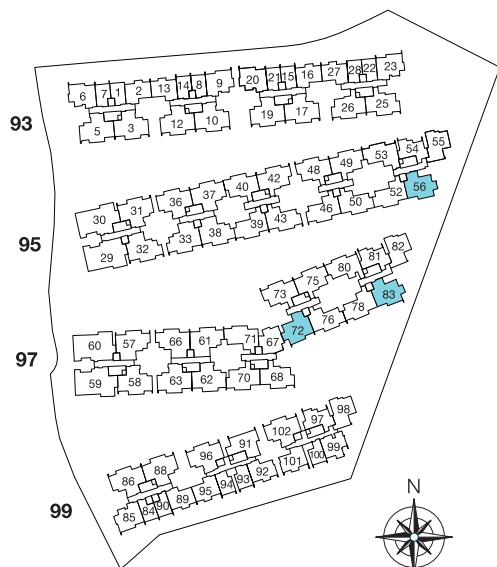
104 sqm / 1,119 sqft

#01-72

#01-56

#01-83

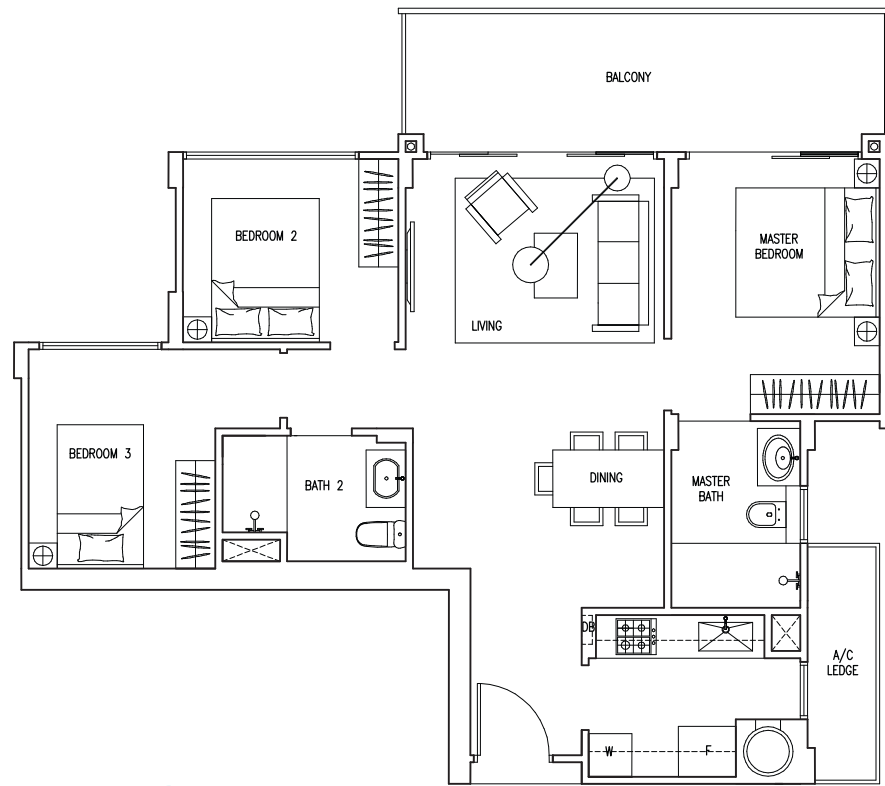
(Mirrored unit)



The plans are subject to change as may be required or approved by the relevant authorities. These are not drawn to scale and are for the purpose of a visual representation of the different layouts that are available. All areas are approximate and subject to final survey. The developer and its agents cannot be held liable for any inaccuracies.



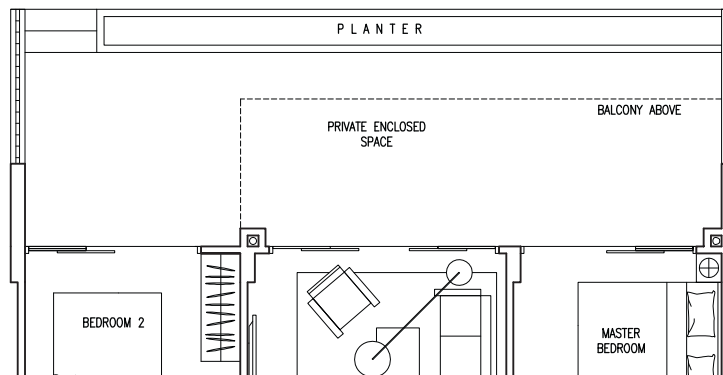
# 3 BEDROOM



## Type C7

91 sqm / 980 sqft

#02-91 to #05-91



## Type C7 (P)

110 sqm / 1,184 sqft

#01-91



The plans are subject to change as may be required or approved by the relevant authorities. These are not drawn to scale and are for the purpose of a visual representation of the different layouts that are available. All areas are approximate and subject to final survey. The developer and its agents cannot be held liable for any inaccuracies.

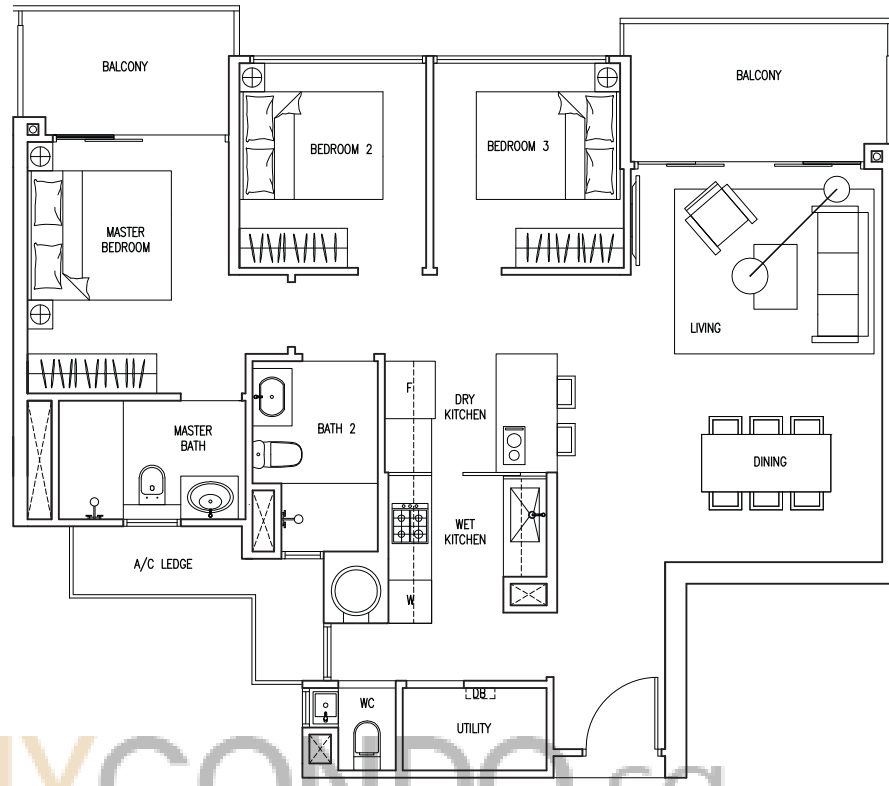
# 3 BEDROOM

## Type C8

104 sqm / 1,119 sqft

|                  |                  |
|------------------|------------------|
| #02-03 to #05-03 | #02-05 to #04-05 |
| #02-10 to #04-10 | #02-12 to #05-12 |
| #02-17 to #05-17 | #02-19 to #04-19 |
| #02-36 to #04-36 | #02-31 to #05-31 |
| #02-58 to #05-58 | #02-37 to #05-37 |
| #02-62 to #05-62 | #02-63 to #04-63 |
| #02-86 to #04-86 | #02-88 to #05-88 |

(Mirrored unit)

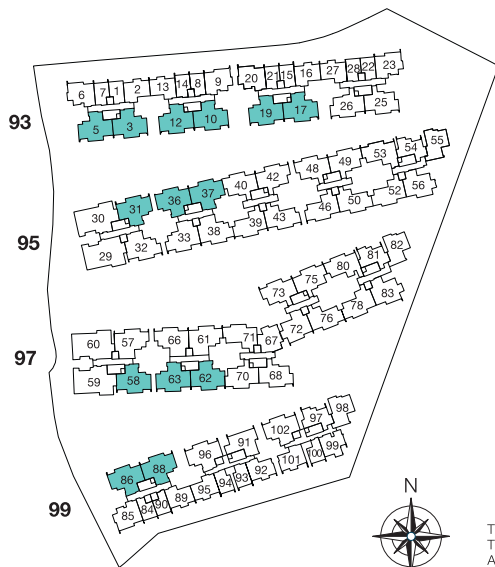
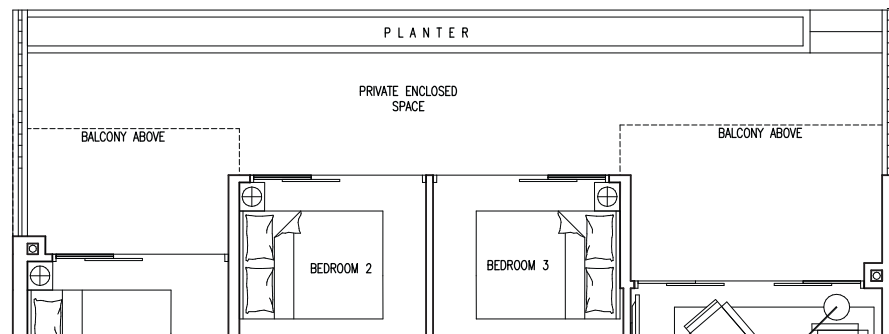


## Type C8 (P)

129 sqm / 1,389 sqft

|        |        |
|--------|--------|
| #01-03 | #01-05 |
| #01-10 | #01-12 |
| #01-17 | #01-19 |
| #01-36 | #01-31 |
| #01-58 | #01-37 |
| #01-62 | #01-63 |
| #01-86 | #01-88 |

(Mirrored unit)



The plans are subject to change as may be required or approved by the relevant authorities. These are not drawn to scale and are for the purpose of a visual representation of the different layouts that are available. All areas are approximate and subject to final survey. The developer and its agents cannot be held liable for any inaccuracies.

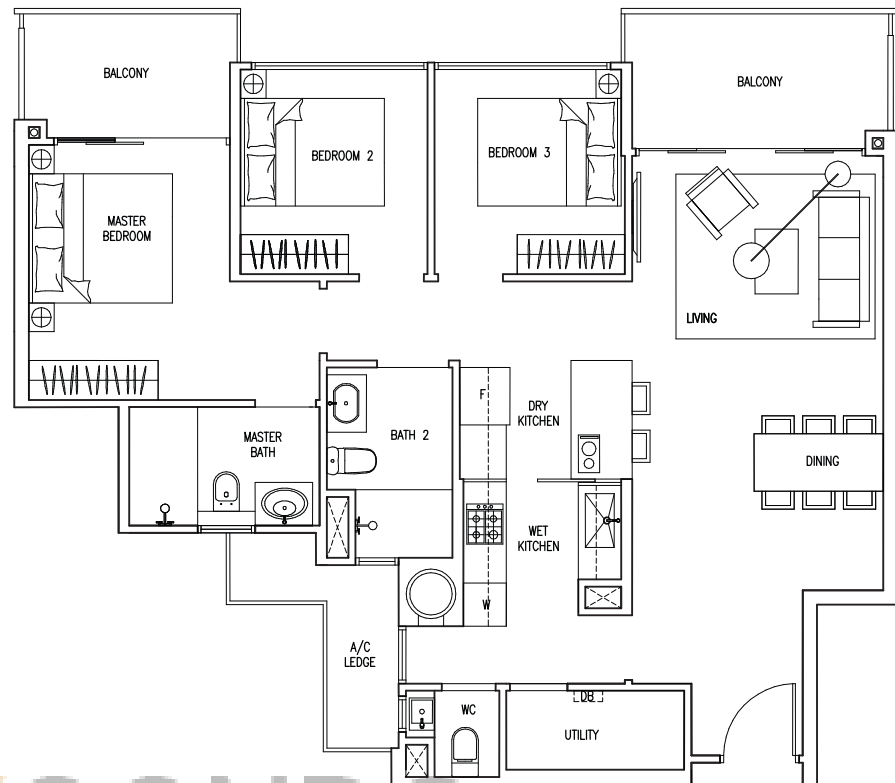
# 3 BEDROOM



## Type C9

105 sqm / 1,130 sqft

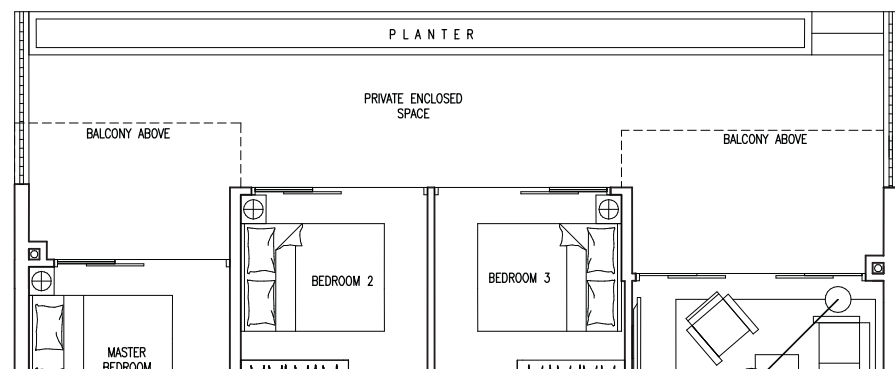
|                  |                                     |
|------------------|-------------------------------------|
| #02-32 to #05-32 | #02-33 to #04-33                    |
| #02-38 to #05-38 | #02-57 to #05-57                    |
| #02-66 to #04-66 | #02-61 to #05-61<br>(Mirrored unit) |



## Type C9 (P)

130 sqm / 1,399 sqft

|        |                           |
|--------|---------------------------|
| #01-32 | #01-33                    |
| #01-38 | #01-57                    |
| #01-66 | #01-61<br>(Mirrored unit) |



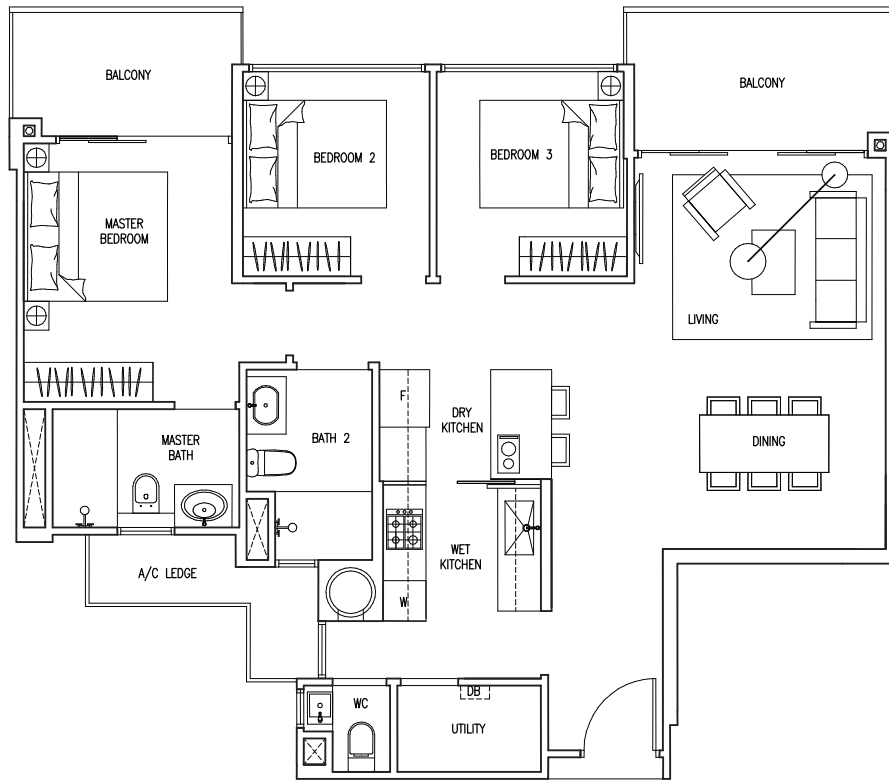
The plans are subject to change as may be required or approved by the relevant authorities. These are not drawn to scale and are for the purpose of a visual representation of the different layouts that are available. All areas are approximate and subject to final survey. The developer and its agents cannot be held liable for any inaccuracies.

# 3 BEDROOM

## Type C10

104 sqm / 1,119 sqft

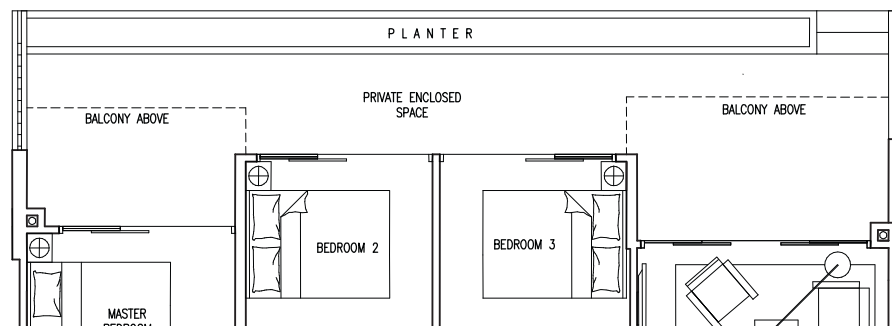
#02-96 to #05-96  
#02-102 to #05-102



## Type C10 (P)

125 sqm / 1,345 sqft

#01-96  
#01-102



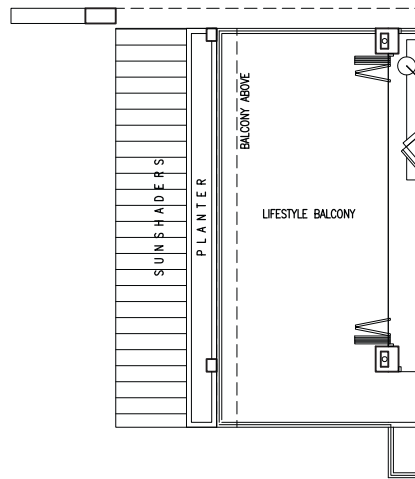
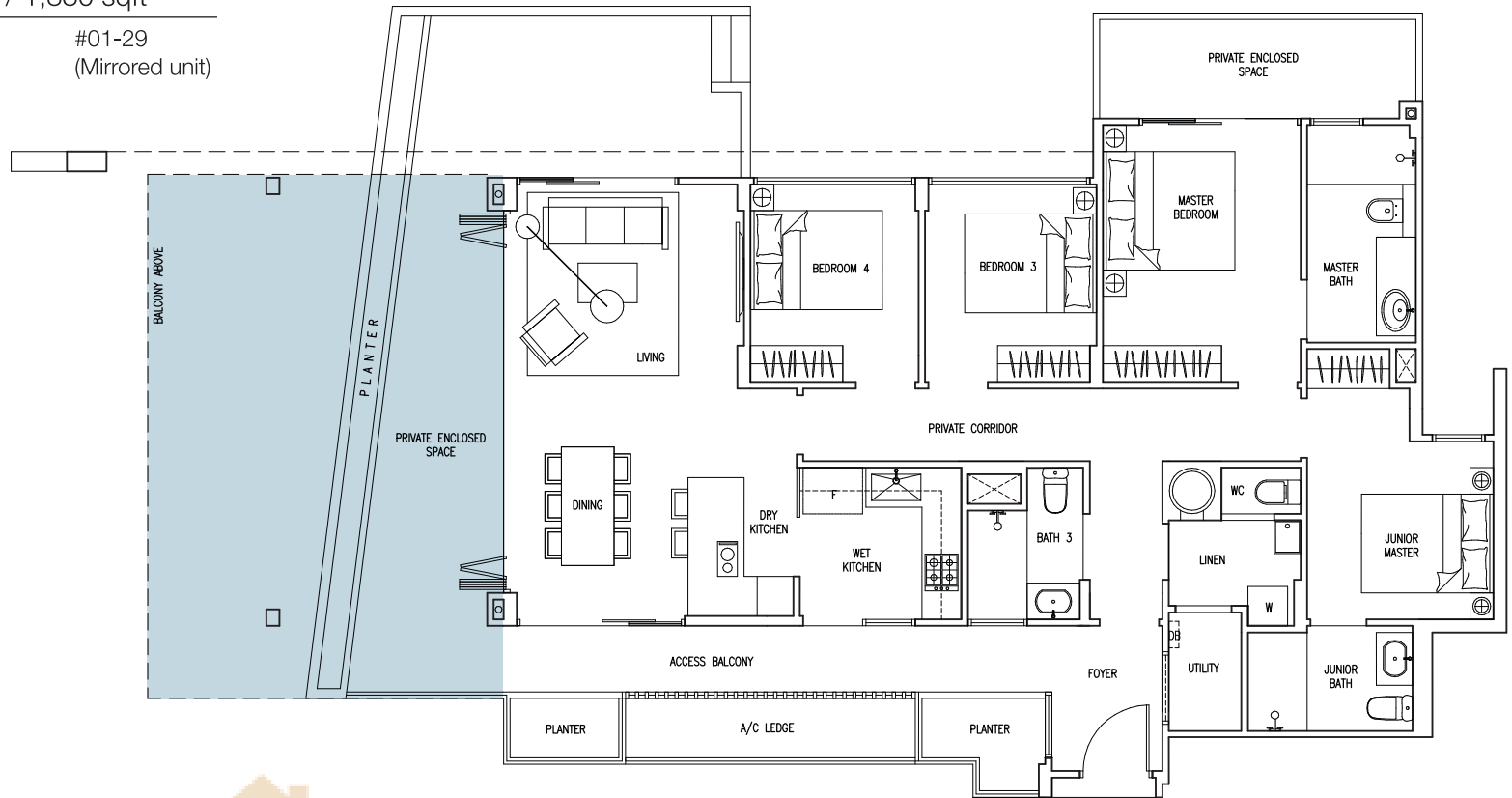
The plans are subject to change as may be required or approved by the relevant authorities.  
These are not drawn to scale and are for the purpose of a visual representation of the different layouts that are available.  
All areas are approximate and subject to final survey. The developer and its agents cannot be held liable for any inaccuracies.

# 4 BEDROOM

## Type D1 (P)

170 sqm / 1,830 sqft

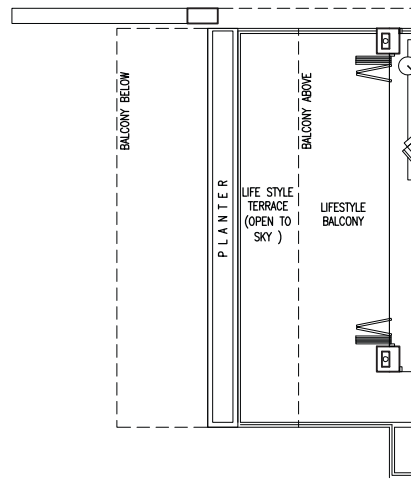
#01-60 #01-29  
(Mirrored unit)



## Type D3

167 sqm / 1,798 sqft

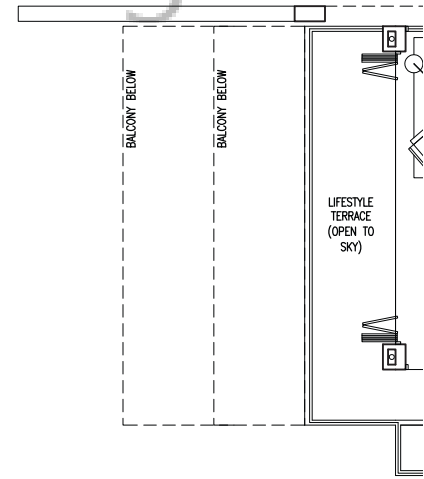
#02-60 #02-29  
(Mirrored units)



## Type D5

164 sqm / 1,765 sqft

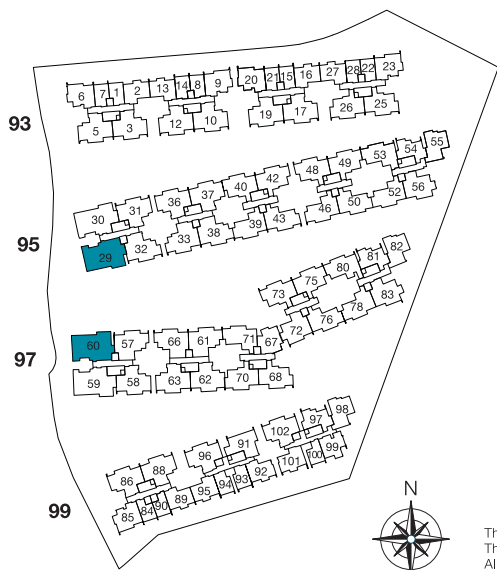
#03-60 #03-29  
(Mirrored units)



## Type D7

149 sqm / 1,604 sqft

#04-60 #04-29  
(Mirrored units)



The plans are subject to change as may be required or approved by the relevant authorities.  
These are not drawn to scale and are for the purpose of a visual representation of the different layouts that are available.  
All areas are approximate and subject to final survey. The developer and its agents cannot be held liable for any inaccuracies.

# 4 BEDROOM

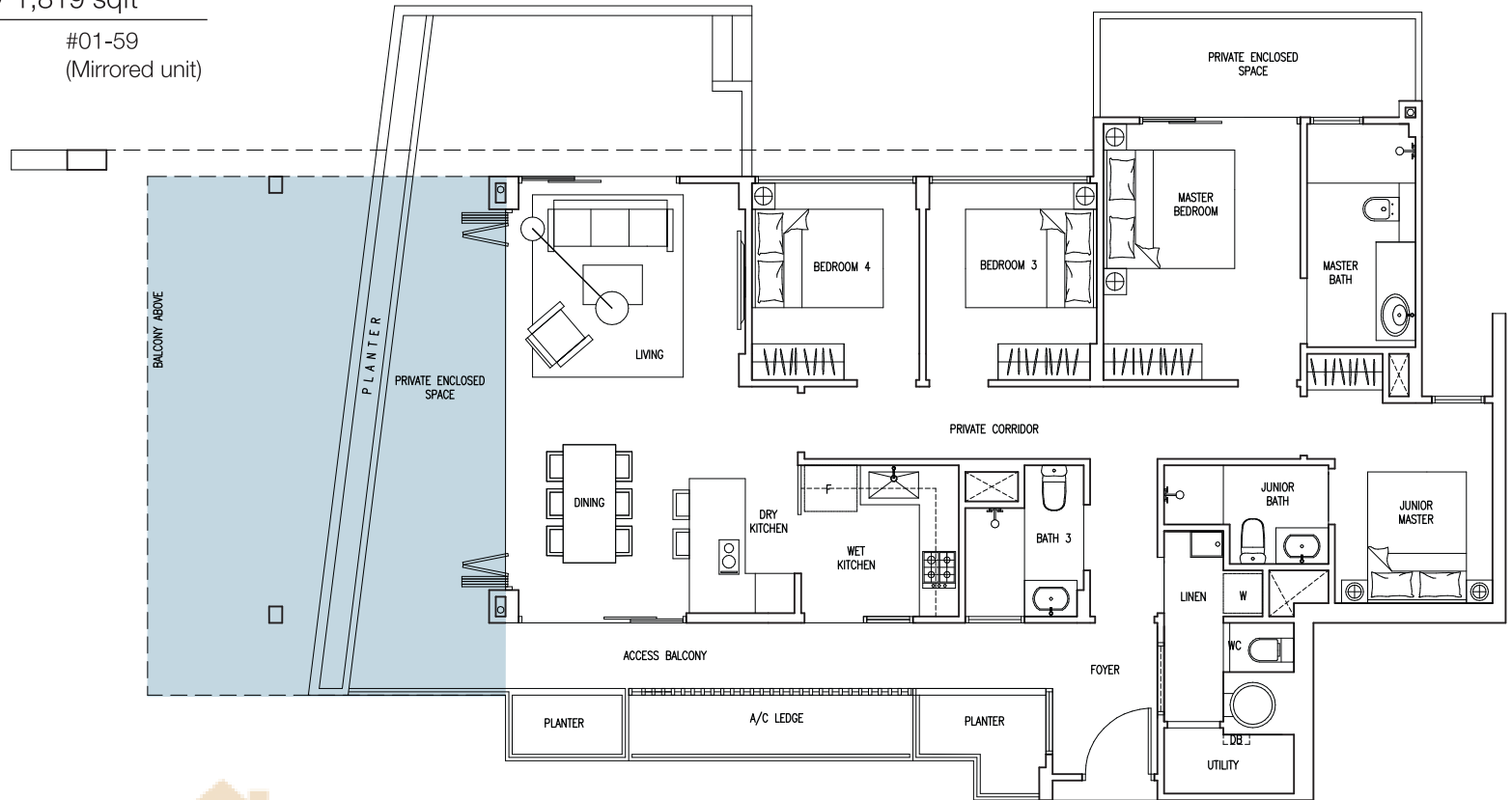
## Type D2 (P)

169 sqm / 1,819 sqft

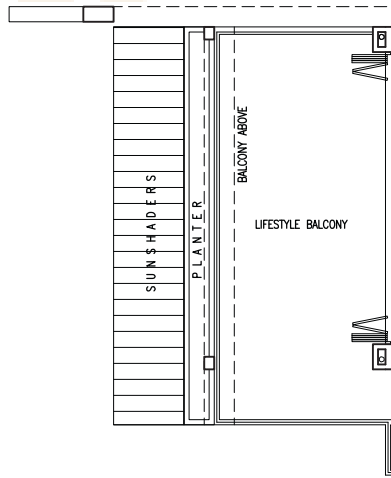
#01-30

#01-59

(Mirrored unit)



BUYCONDO.sg



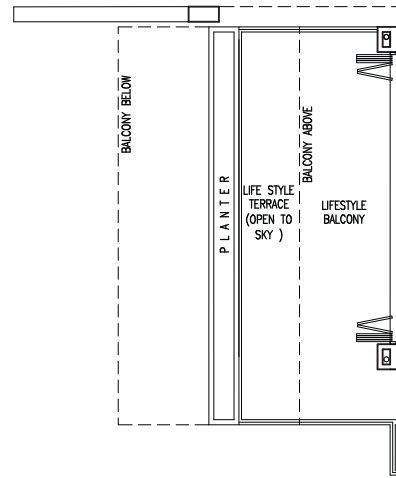
## Type D4

166 sqm / 1,787 sqft

#02-30

#01-59

(Mirrored units)



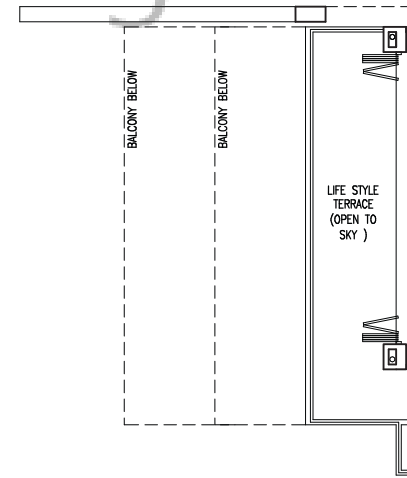
## Type D6

163 sqm / 1,755 sqft

#03-30

#03-59

(Mirrored units)



## Type D8

148 sqm / 1,593 sqft

#04-30

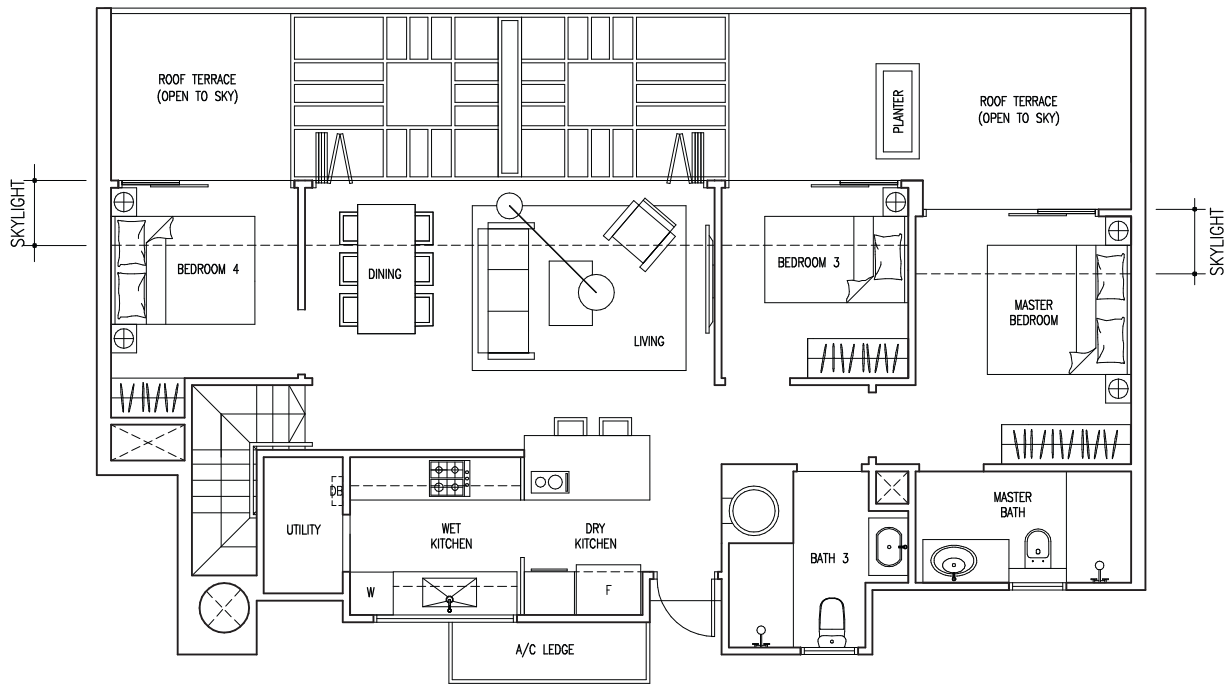
#04-59

(Mirrored units)

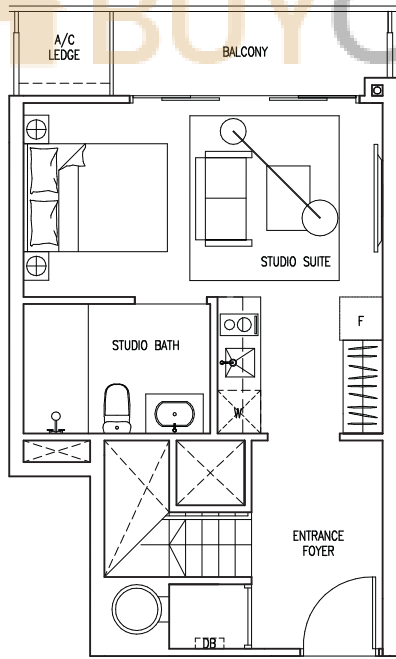


The plans are subject to change as may be required or approved by the relevant authorities. These are not drawn to scale and are for the purpose of a visual representation of the different layouts that are available. All areas are approximate and subject to final survey. The developer and its agents cannot be held liable for any inaccuracies.

# PENTHOUSE



Attic

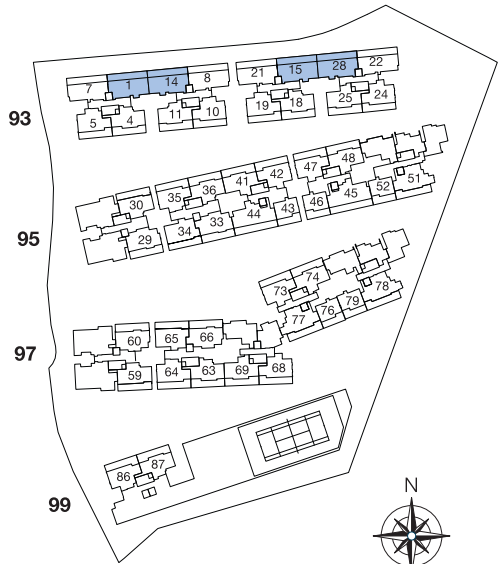


5th Storey

Type PH1(DK)

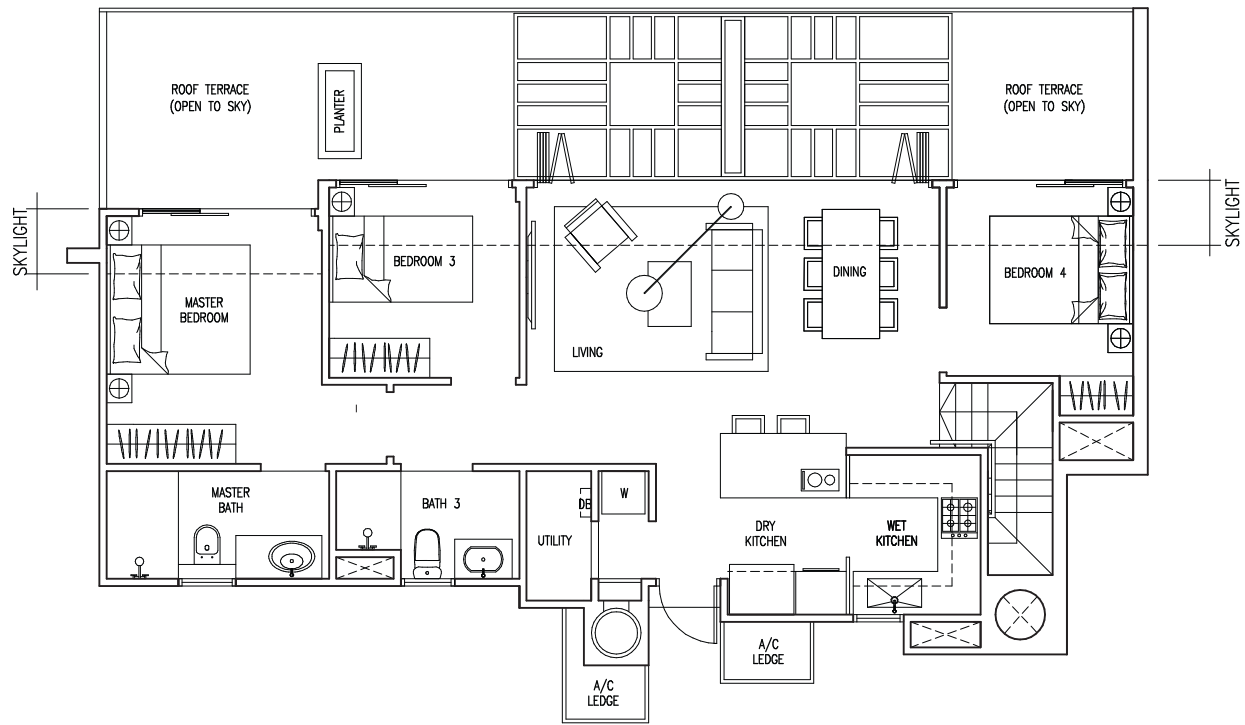
159 sqm / 1,711 sqft

- |                  |        |
|------------------|--------|
| #05-01           | #05-14 |
| #05-15           | #05-28 |
| (Mirrored units) |        |



The plans are subject to change as may be required or approved by the relevant authorities. These are not drawn to scale and are for the purpose of a visual representation of the different layouts that are available. All areas are approximate and subject to final survey. The developer and its agents cannot be held liable for any inaccuracies.

# PENTHOUSE

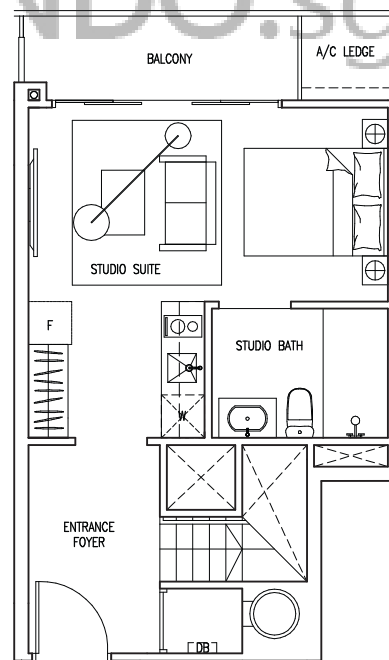


Attic

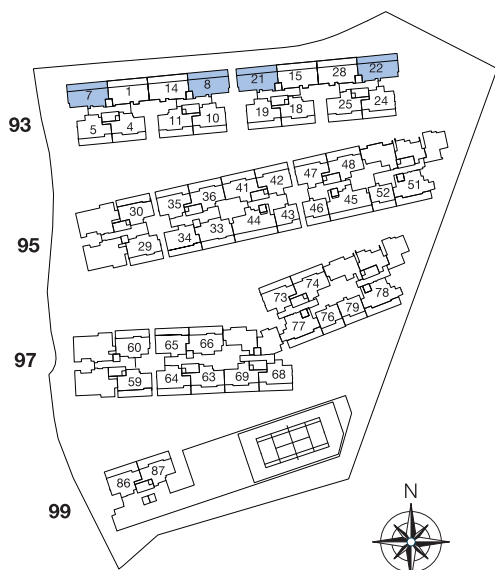
 Type PH 2(DK)

158 sqm / 1,701 sqft

#05-07      #05-08  
#05-21      #05-22 (Mirrored units)



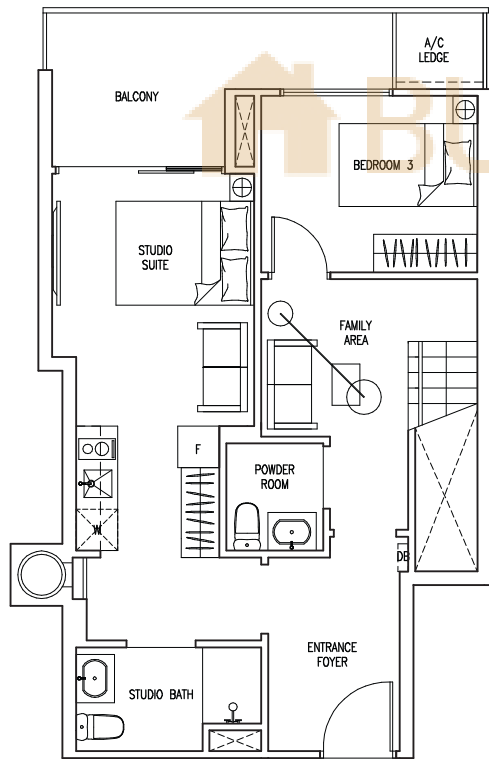
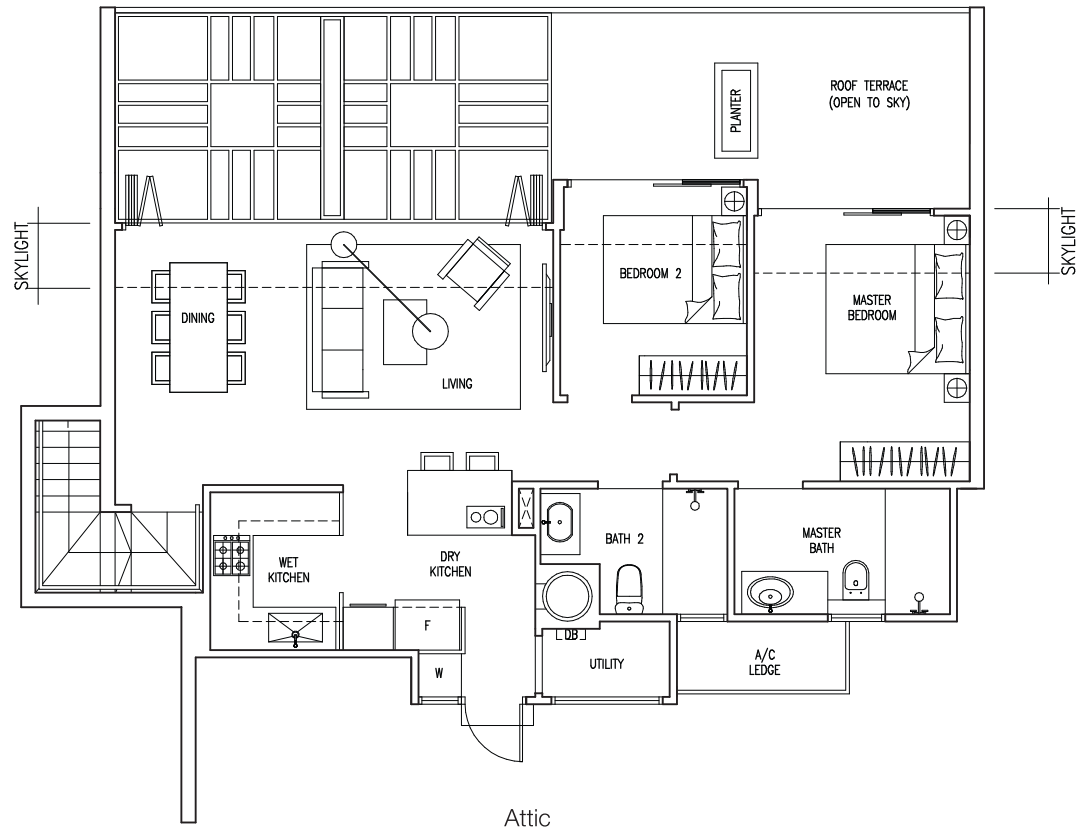
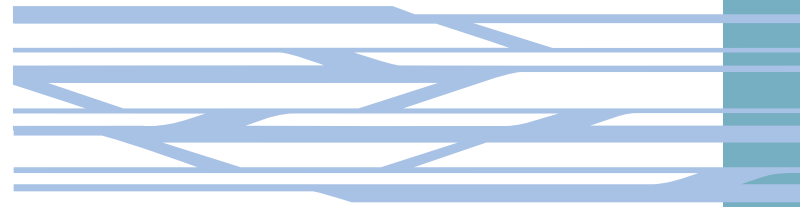
5th Storey



The plans are subject to change as may be required or approved by the relevant authorities. These are not drawn to scale and are for the purpose of a visual representation of the different layouts that are available. All areas are approximate and subject to final survey. The developer and its agents cannot be held liable for any inaccuracies.



# PENTHOUSE



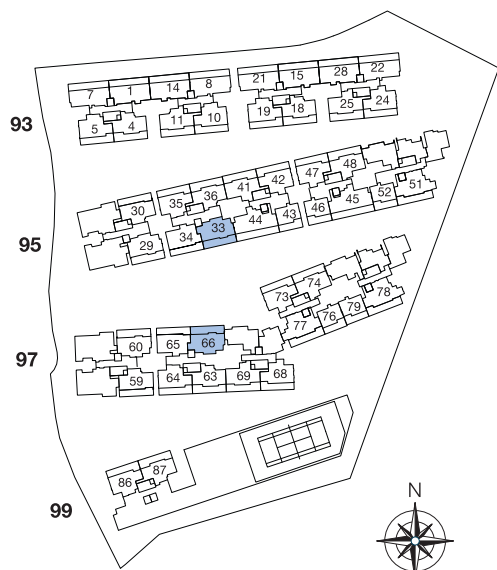
## Type PH 3(DK)

174 sqm / 1,873 sqft

#05-66

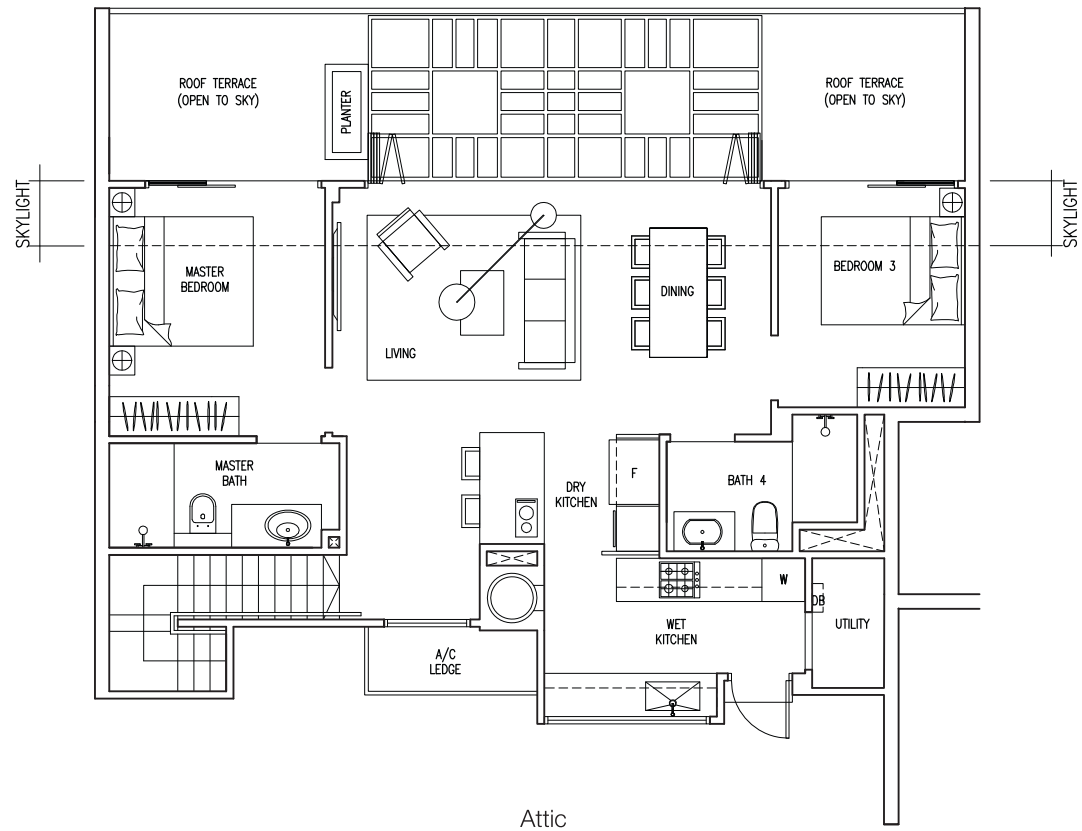
#05-33

(Mirrored units)



The plans are subject to change as may be required or approved by the relevant authorities. These are not drawn to scale and are for the purpose of a visual representation of the different layouts that are available. All areas are approximate and subject to final survey. The developer and its agents cannot be held liable for any inaccuracies.

# PENTHOUSE



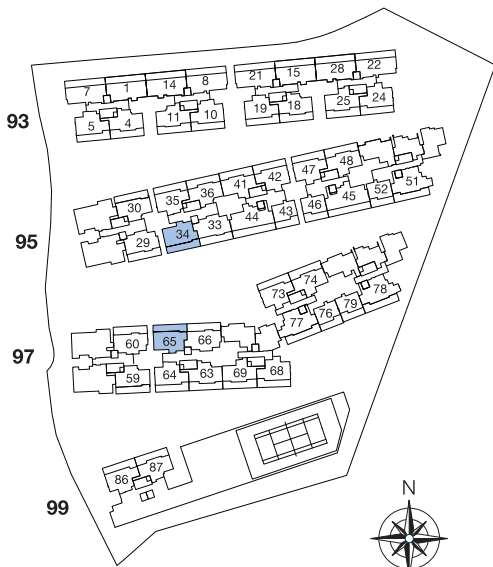
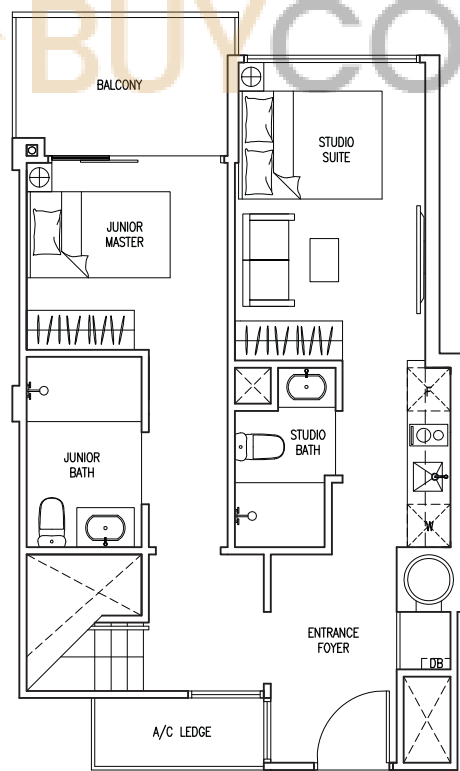
## BUYCONDO.SG Type PH 4(DK)

165 sqm / 1,776 sqft

#05-65

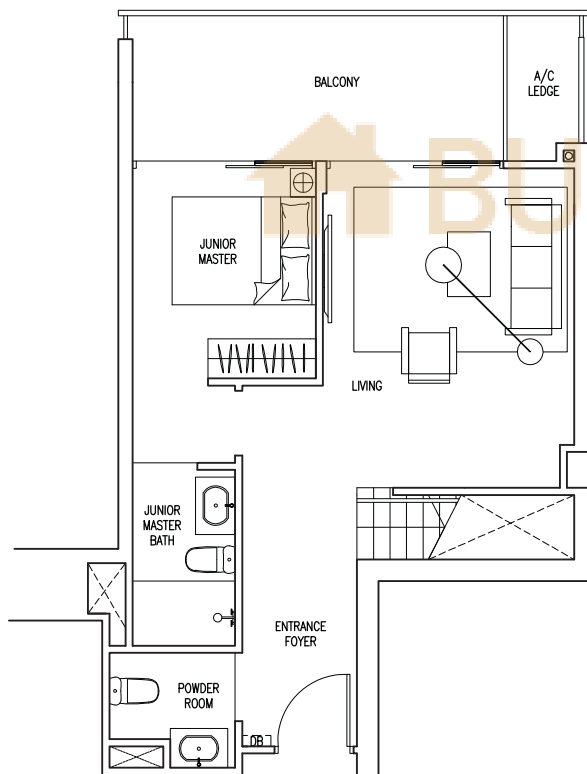
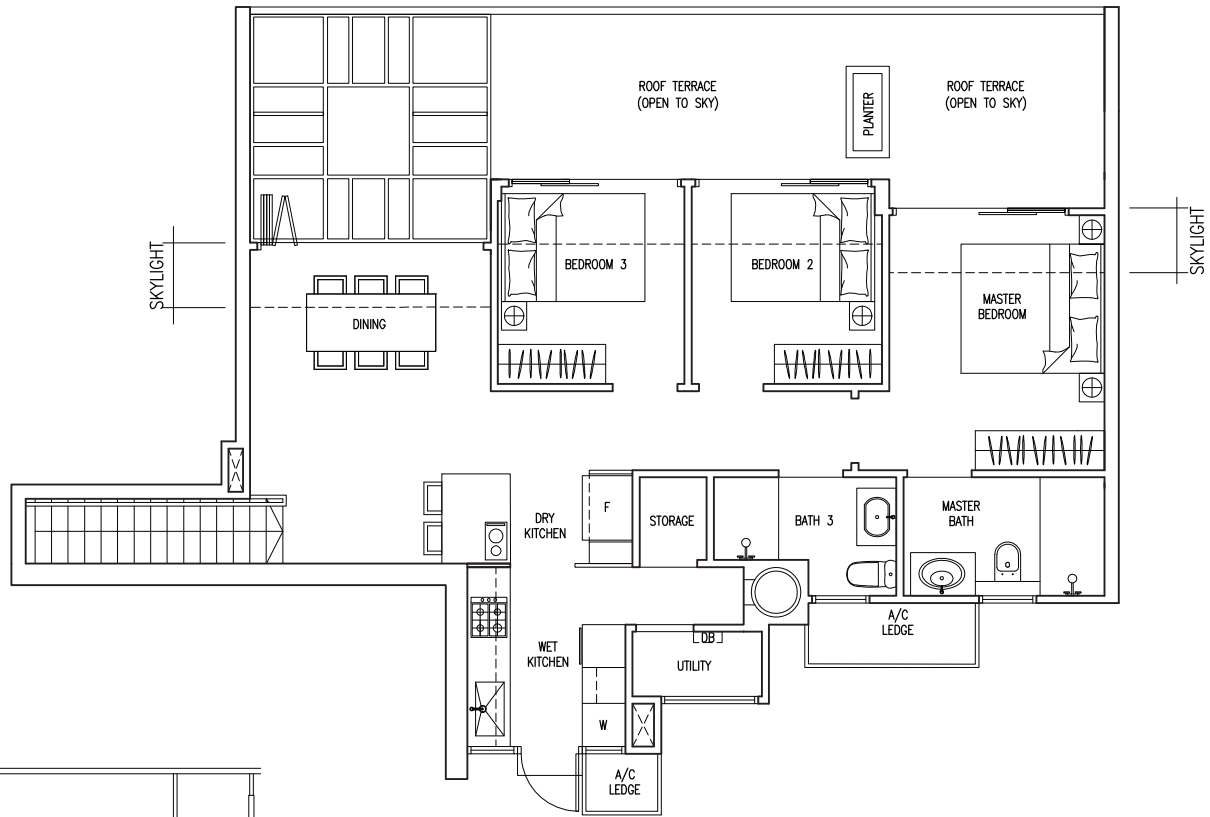
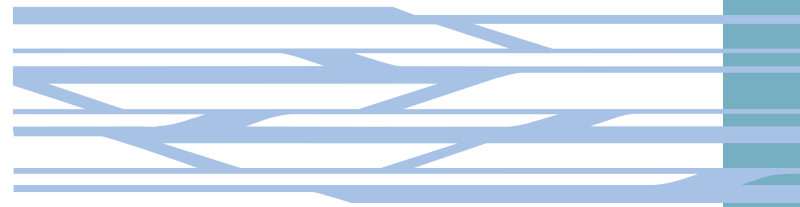
#05-34

(Mirrored units)



The plans are subject to change as may be required or approved by the relevant authorities. These are not drawn to scale and are for the purpose of a visual representation of the different layouts that are available. All areas are approximate and subject to final survey. The developer and its agents cannot be held liable for any inaccuracies.

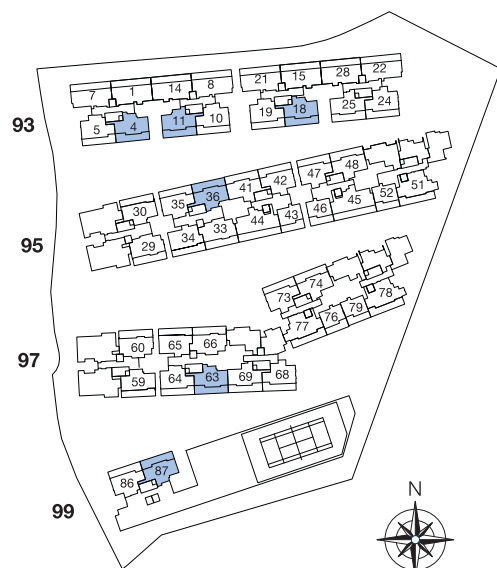
# PENTHOUSE



## Type PH 5

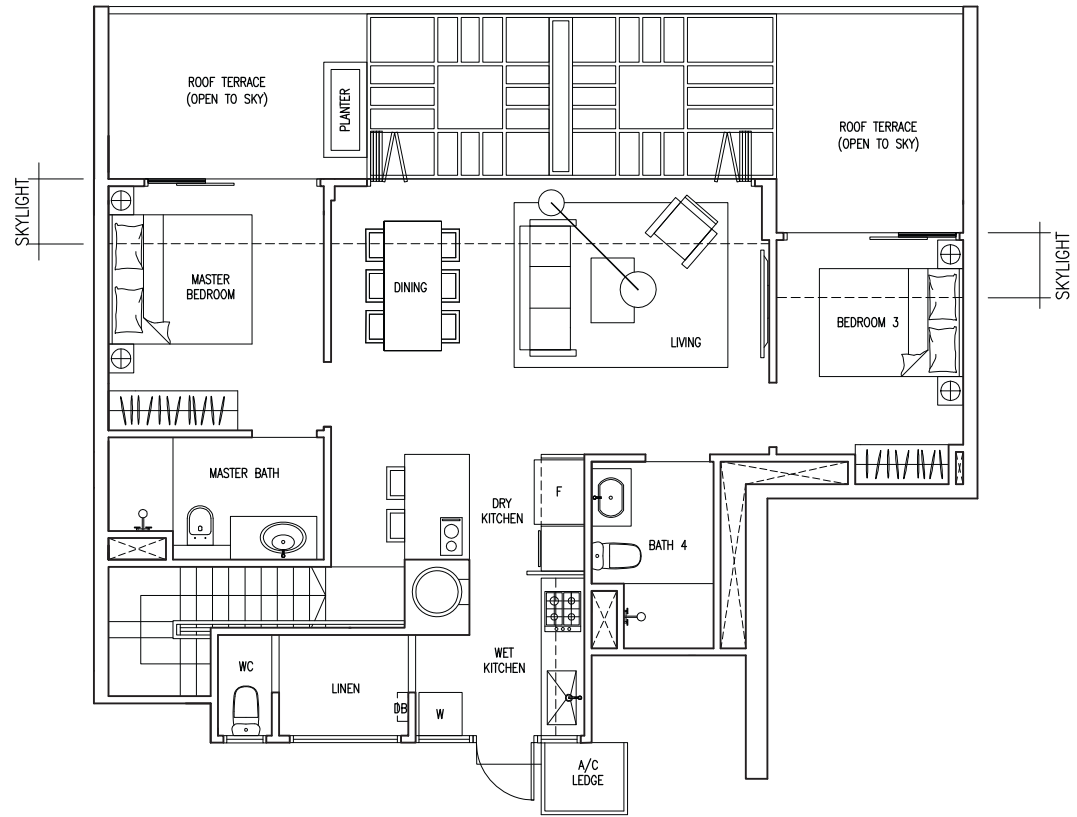
169 sqm / 1,819 sqft

- |        |        |
|--------|--------|
| #05-11 | #05-04 |
| #05-36 | #05-18 |
| #05-87 | #05-63 |
- (Mirrored units)



The plans are subject to change as may be required or approved by the relevant authorities. These are not drawn to scale and are for the purpose of a visual representation of the different layouts that are available. All areas are approximate and subject to final survey. The developer and its agents cannot be held liable for any inaccuracies.

# PENTHOUSE



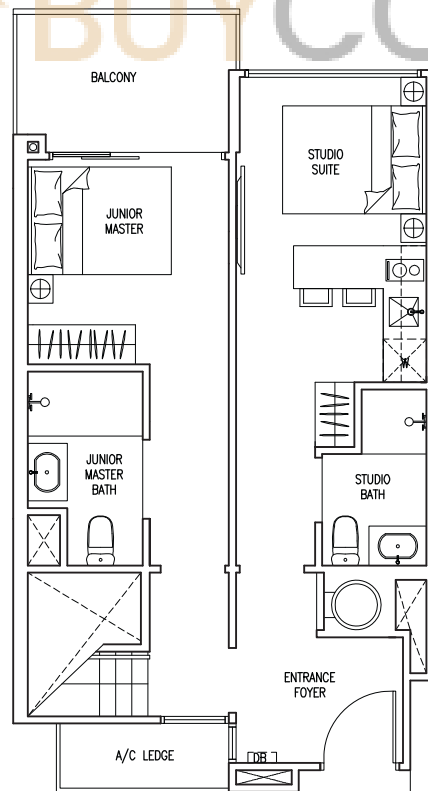
Attic



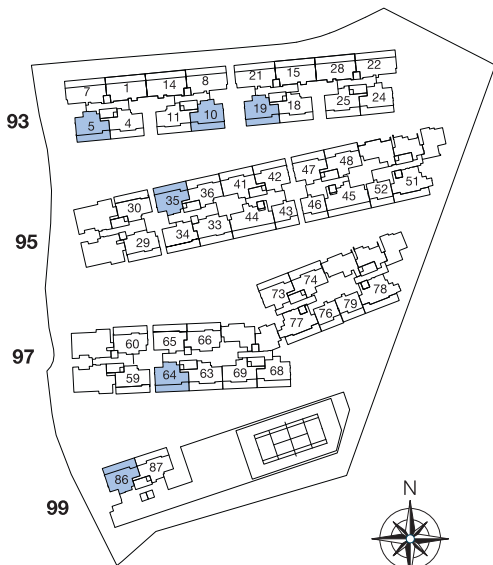
Type PH 6(DK)

162 sqm / 1,744 sqft

- #05-10
  - #05-35
  - #05-86
  - #05-05
  - #05-19
  - #05-64
- (Mirrored units)

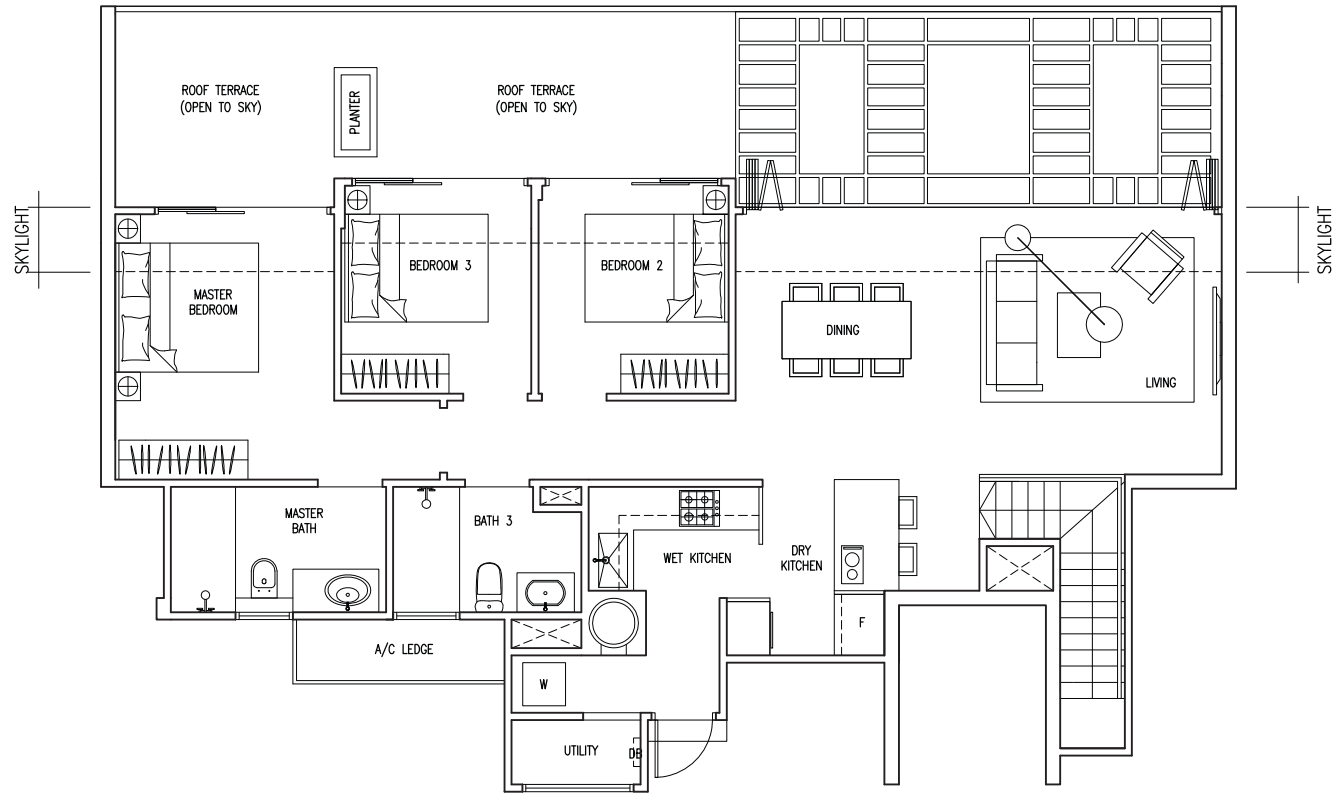


5th Storey



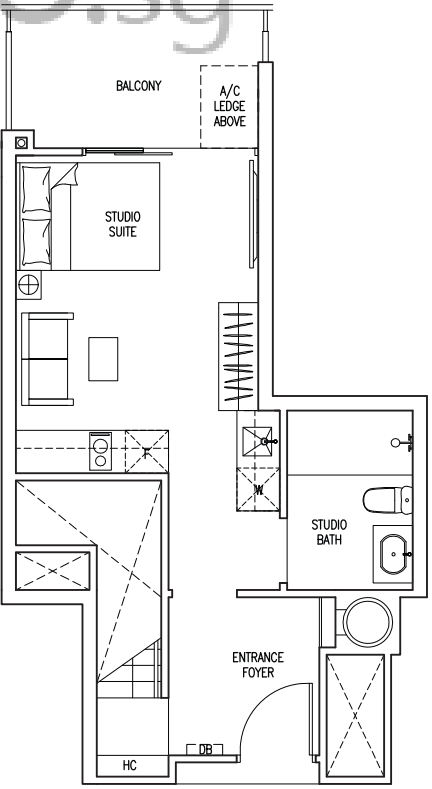
The plans are subject to change as may be required or approved by the relevant authorities. These are not drawn to scale and are for the purpose of a visual representation of the different layouts that are available. All areas are approximate and subject to final survey. The developer and its agents cannot be held liable for any inaccuracies.

# PENTHOUSE

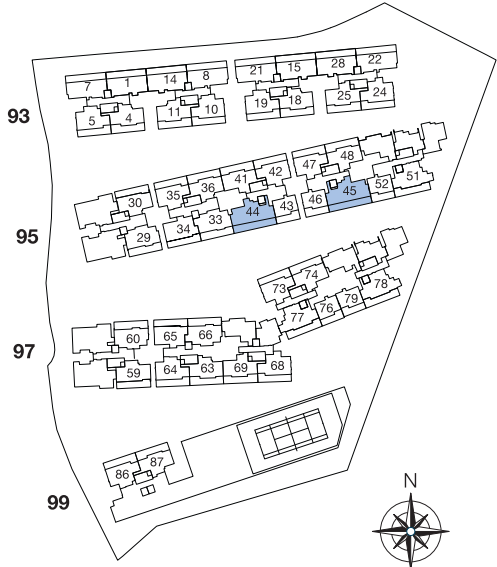


Attic

Type PH 7(DK)  
 181 sqm / 1,948 sqft  
 #05-45 #05-44  
 (Mirrored units)

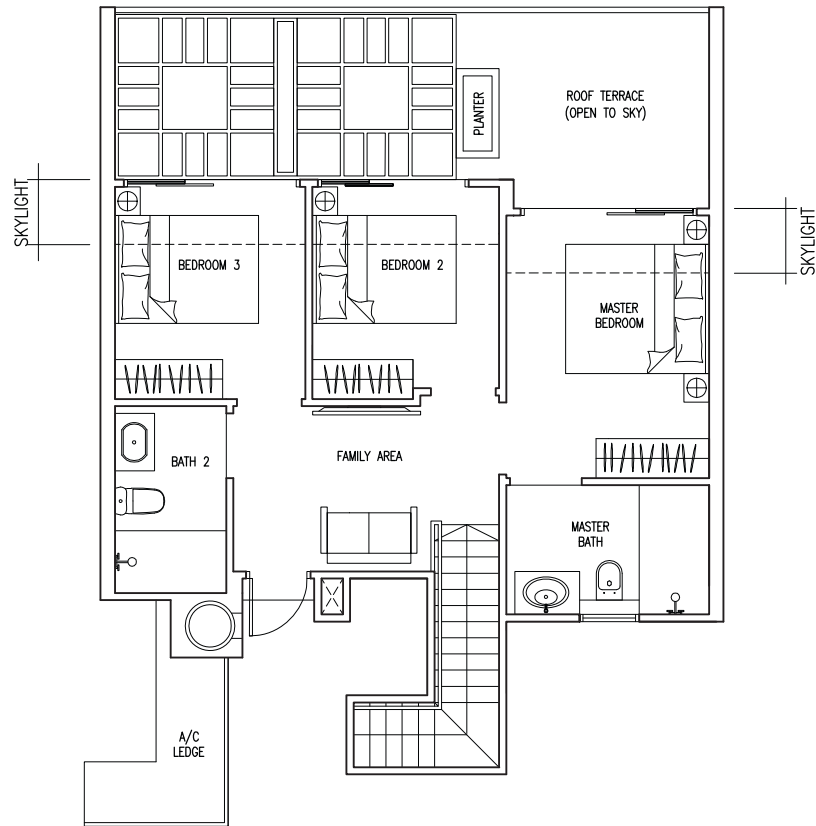


5th Storey



The plans are subject to change as may be required or approved by the relevant authorities. These are not drawn to scale and are for the purpose of a visual representation of the different layouts that are available. All areas are approximate and subject to final survey. The developer and its agents cannot be held liable for any inaccuracies.

# PENTHOUSE

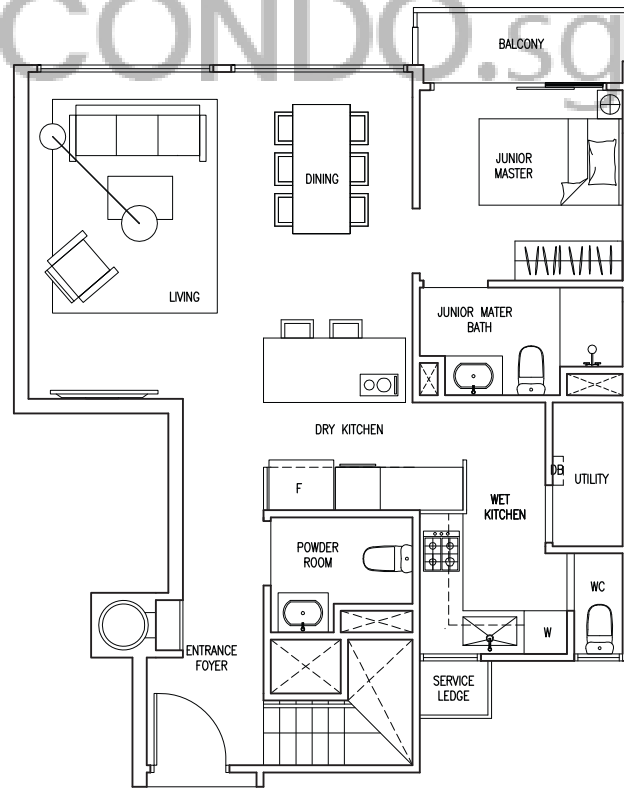


Attic

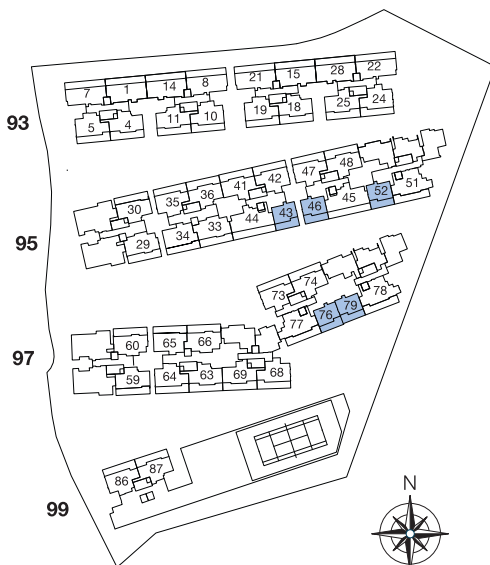
## Type PH 8

145 sqm / 1,561 sqft

- |        |                  |
|--------|------------------|
| #05-46 | #05-43           |
| #05-52 | #05-76           |
| #05-79 | (Mirrored units) |

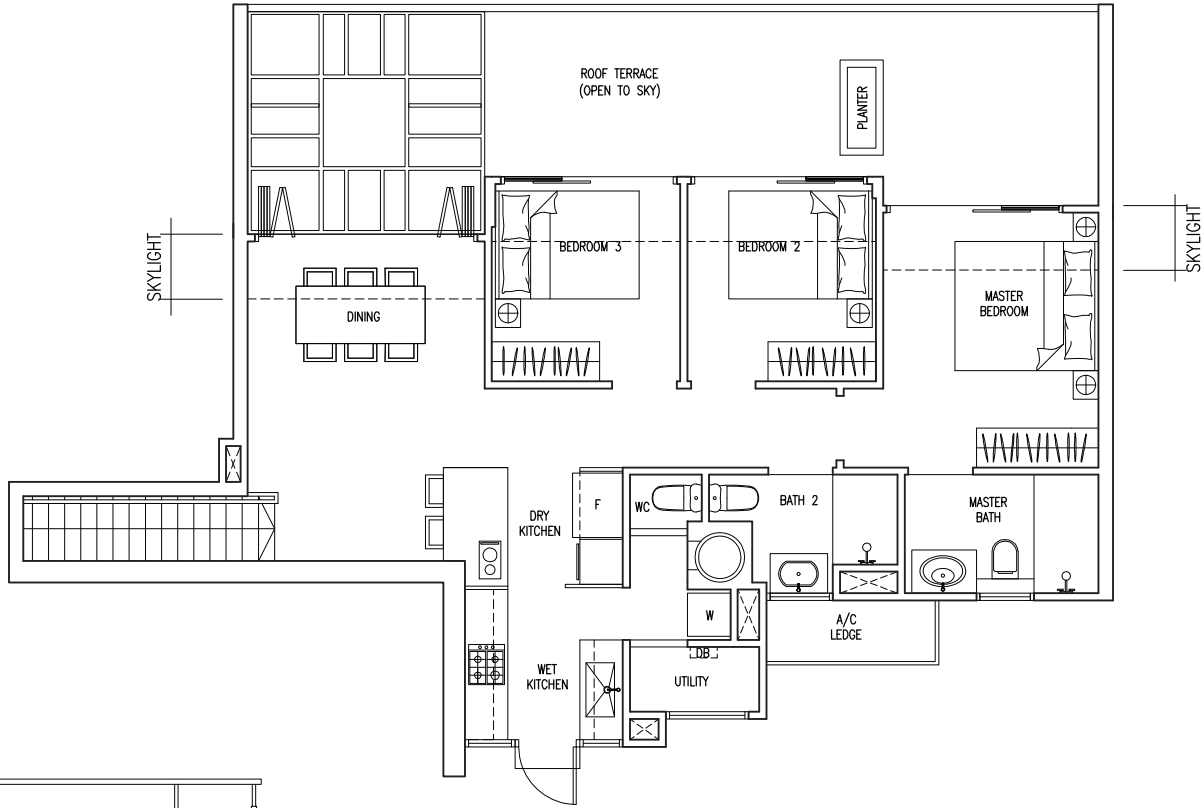


5th Storey

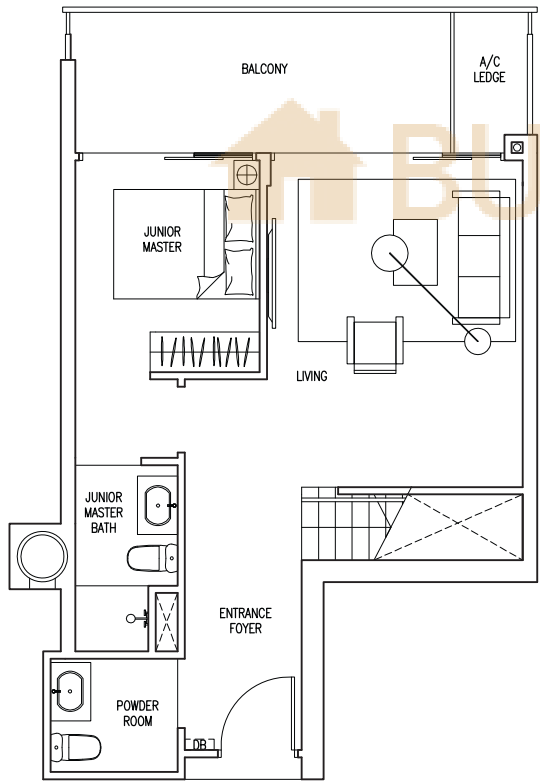


The plans are subject to change as may be required or approved by the relevant authorities. These are not drawn to scale and are for the purpose of a visual representation of the different layouts that are available. All areas are approximate and subject to final survey. The developer and its agents cannot be held liable for any inaccuracies.

# PENTHOUSE



Attic



5th Storey

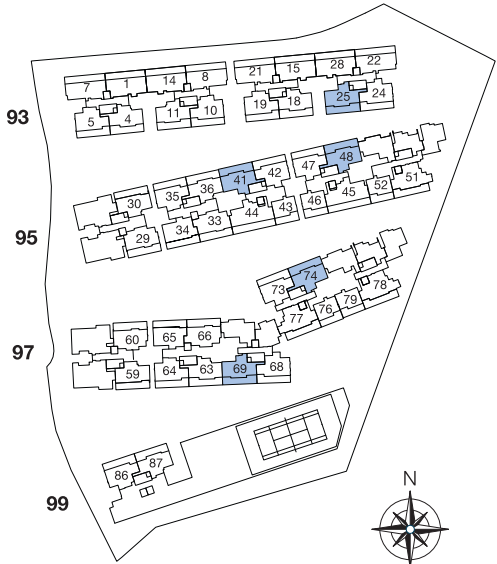
BUYCONDO.sg

## Type PH 9

168 sqm / 1,808 sqft

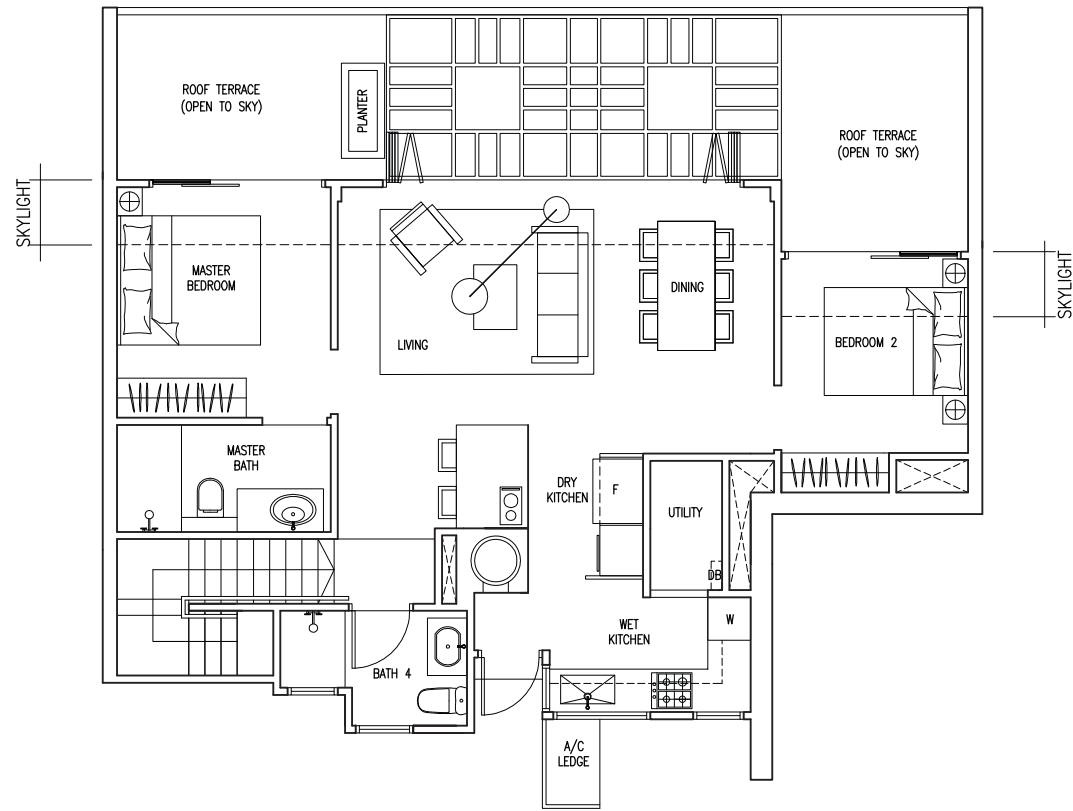
- #05-25
- #05-48
- #05-69
- #05-74

#05-41  
(Mirrored units)

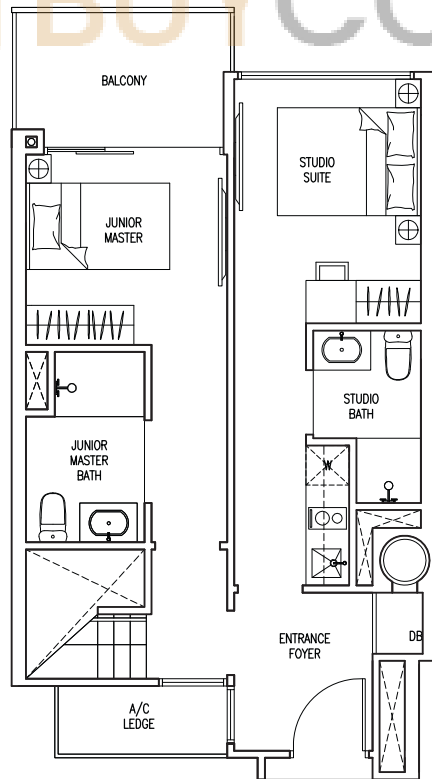


The plans are subject to change as may be required or approved by the relevant authorities. These are not drawn to scale and are for the purpose of a visual representation of the different layouts that are available. All areas are approximate and subject to final survey. The developer and its agents cannot be held liable for any inaccuracies.

# PENTHOUSE



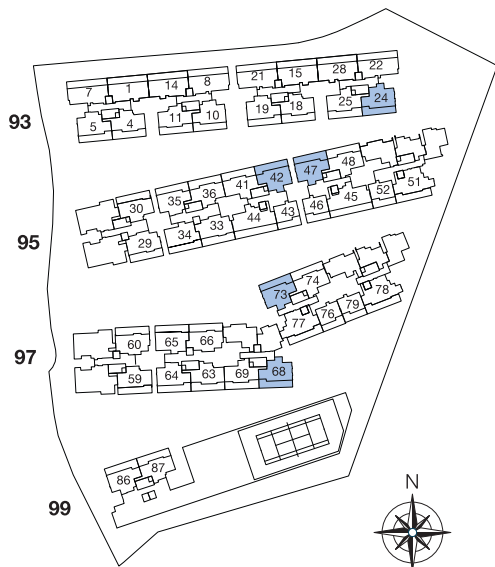
Attic



5th Storey

160 sqm / 1,722 sqft

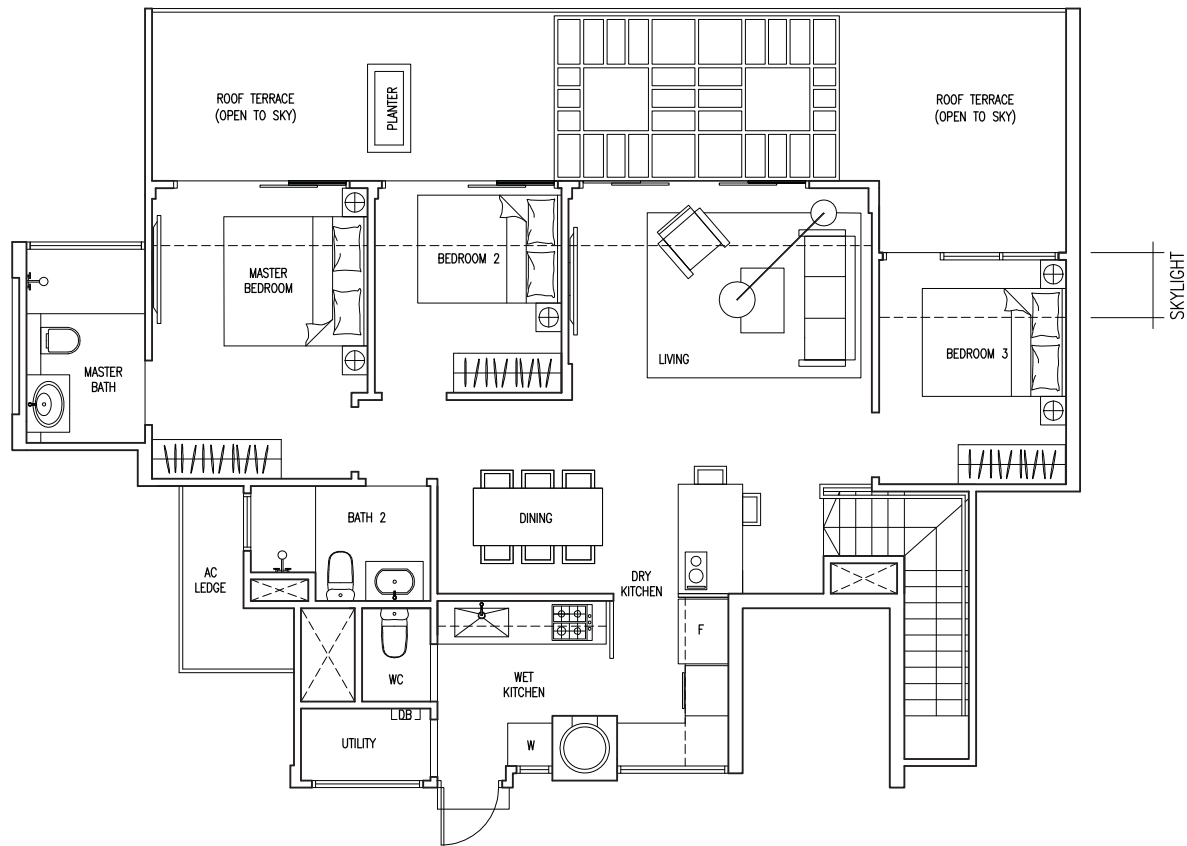
- #05-24
  - #05-47
  - #05-68
  - #05-73
- #05-42
  - (Mirrored units)



The plans are subject to change as may be required or approved by the relevant authorities. These are not drawn to scale and are for the purpose of a visual representation of the different layouts that are available. All areas are approximate and subject to final survey. The developer and its agents cannot be held liable for any inaccuracies.



# PENTHOUSE



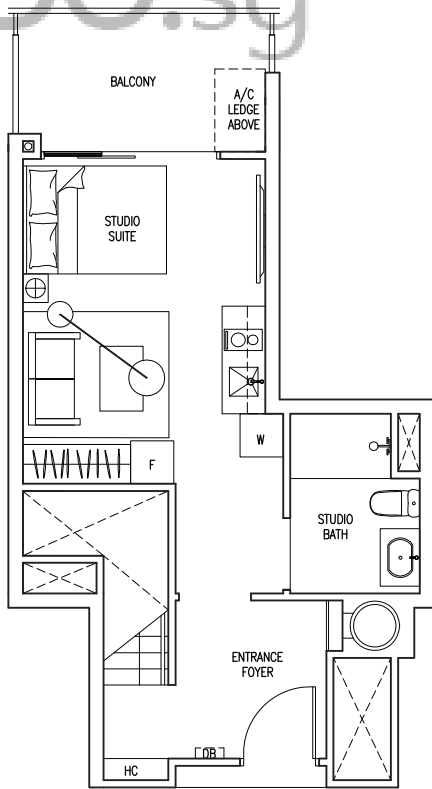
Attic



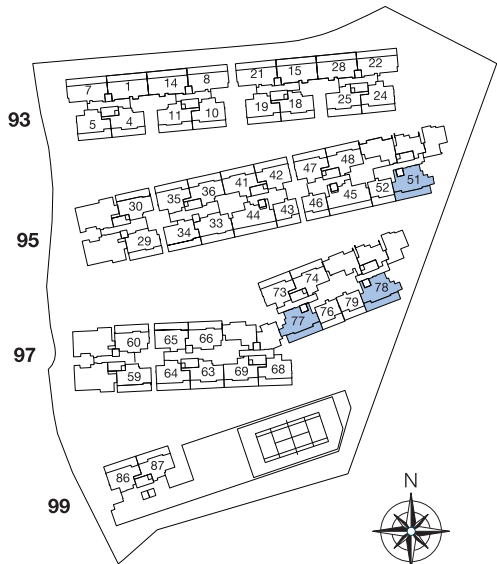
Type PH 11(DK)

166 sqm / 1,787 sqft

#05-51                      #05-77  
 #05-78                      (Mirrored units)

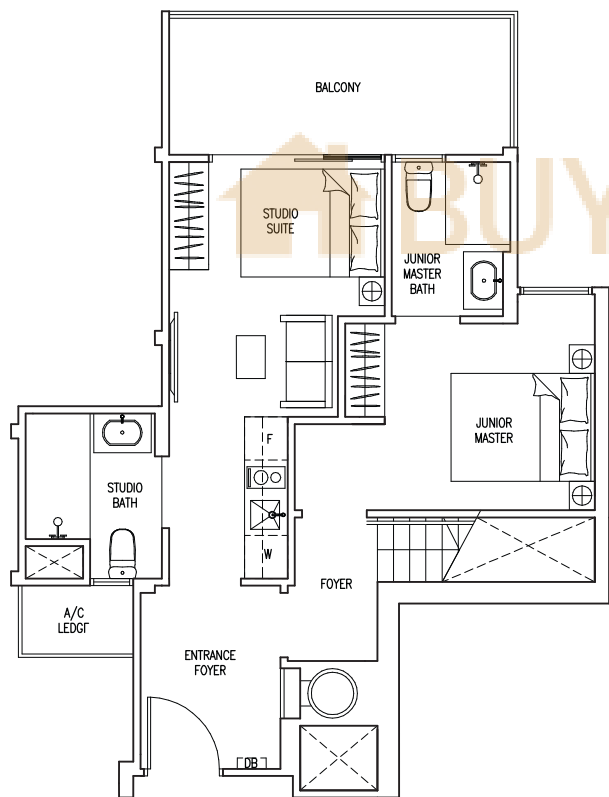
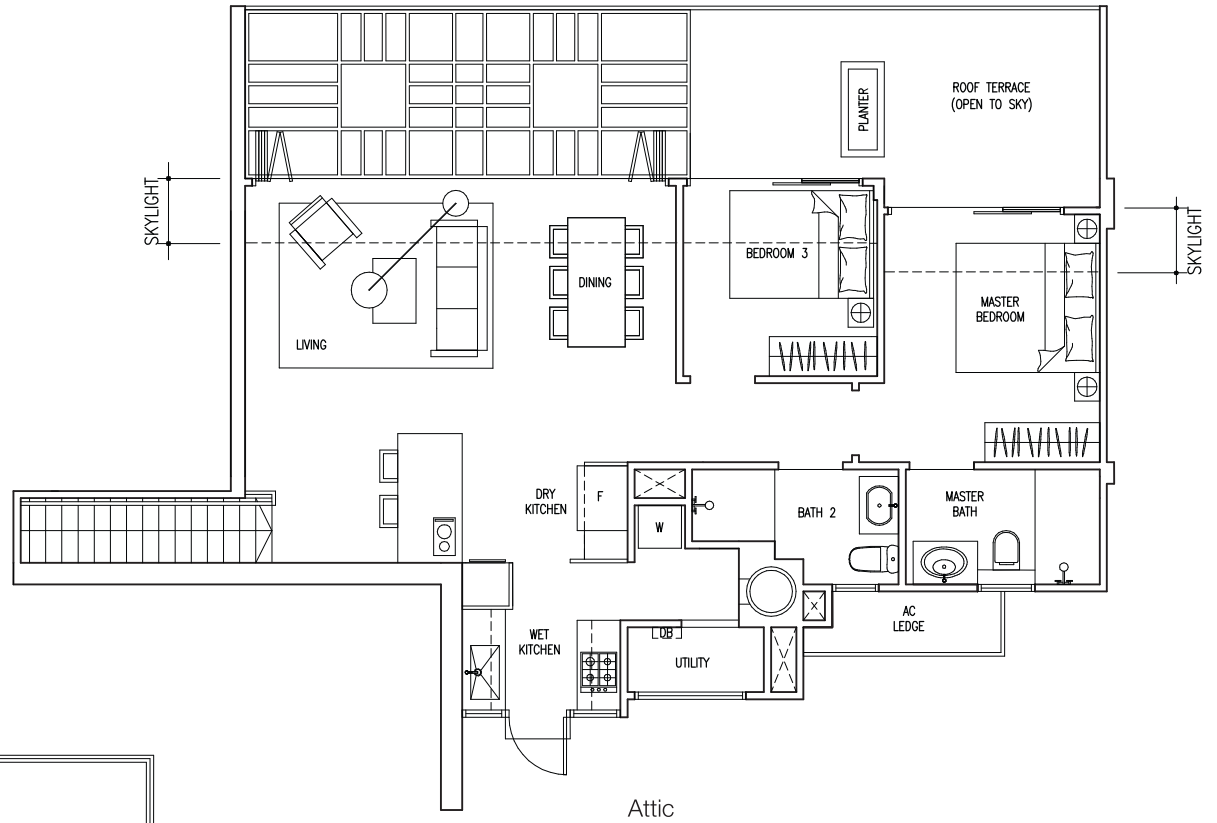


5th Storey



The plans are subject to change as may be required or approved by the relevant authorities. These are not drawn to scale and are for the purpose of a visual representation of the different layouts that are available. All areas are approximate and subject to final survey. The developer and its agents cannot be held liable for any inaccuracies.

# PENTHOUSE



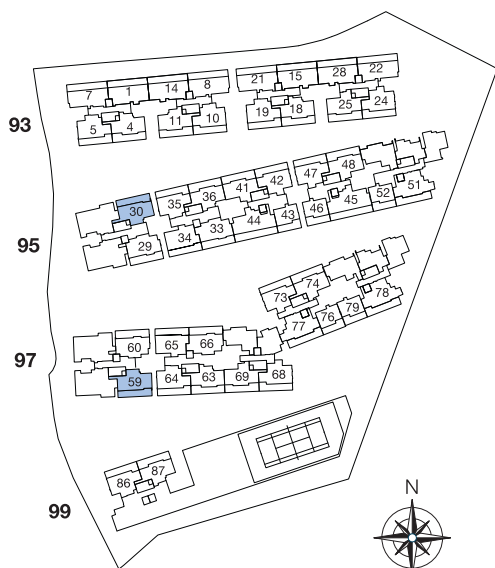
## Type PH 12(DK)

166 sqm / 1,787 sqft

#05-30

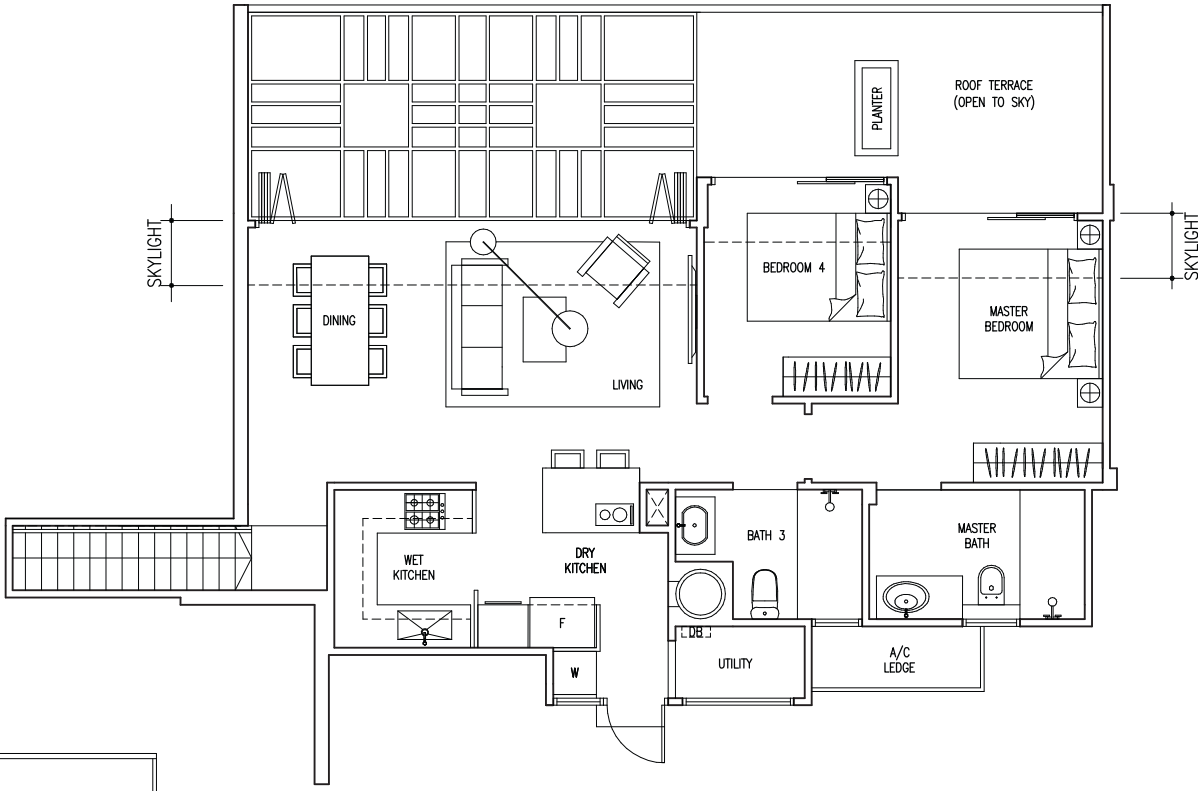
#05-59

(Mirrored units)

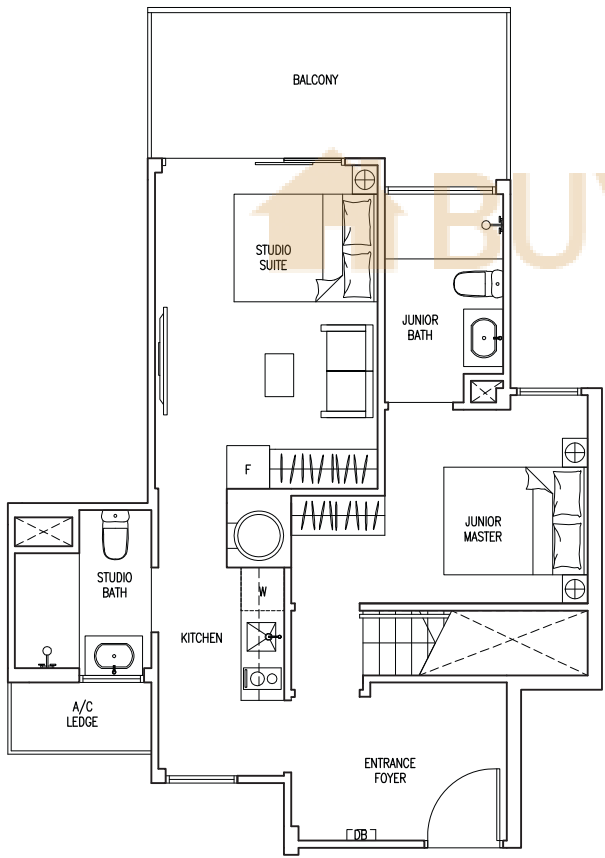


The plans are subject to change as may be required or approved by the relevant authorities. These are not drawn to scale and are for the purpose of a visual representation of the different layouts that are available. All areas are approximate and subject to final survey. The developer and its agents cannot be held liable for any inaccuracies.

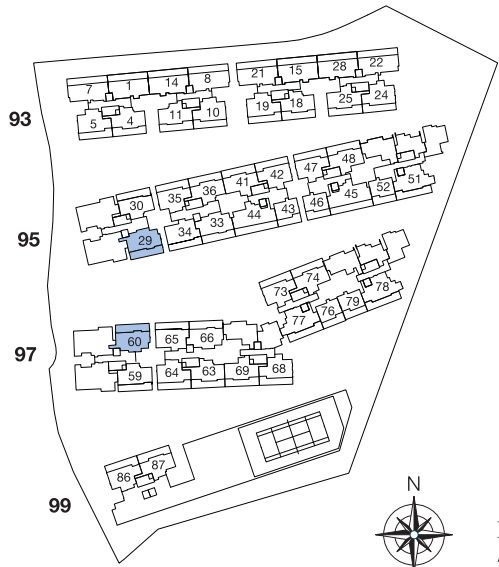
# PENTHOUSE



Attic



5th Storey



The plans are subject to change as may be required or approved by the relevant authorities. These are not drawn to scale and are for the purpose of a visual representation of the different layouts that are available. All areas are approximate and subject to final survey. The developer and its agents cannot be held liable for any inaccuracies.

## Type PH 13(DK)

178sqm / 1,916 sqft

#05-60

#05-29

(Mirrored units)