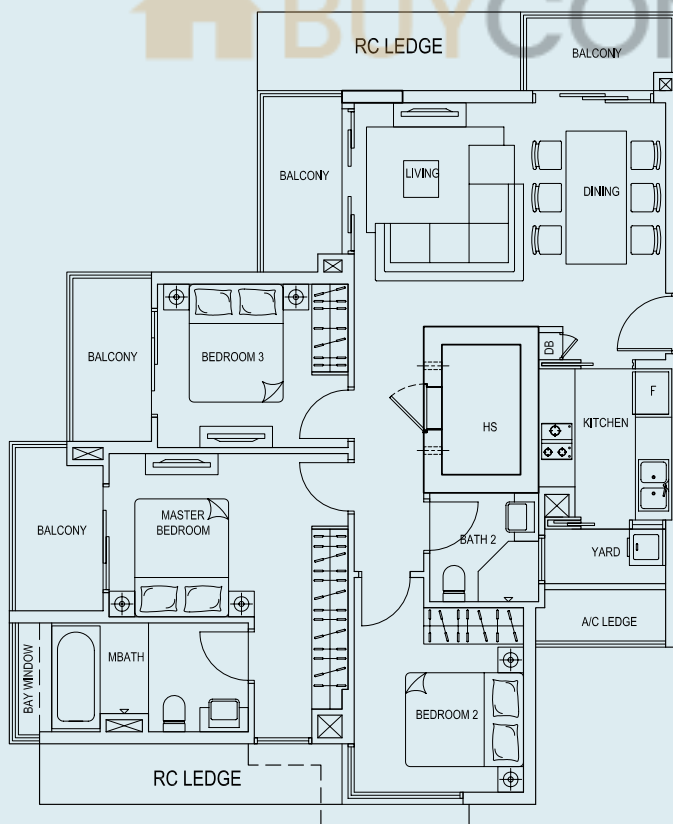
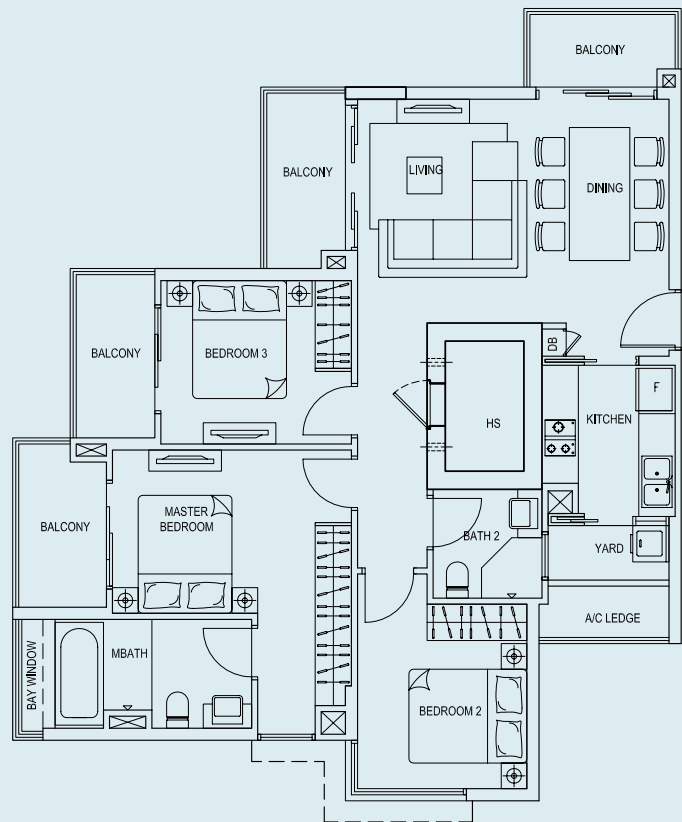
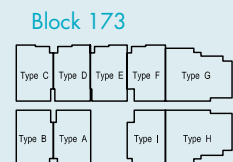
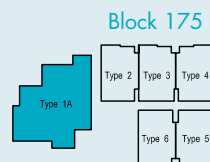
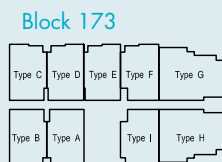
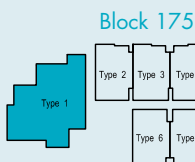


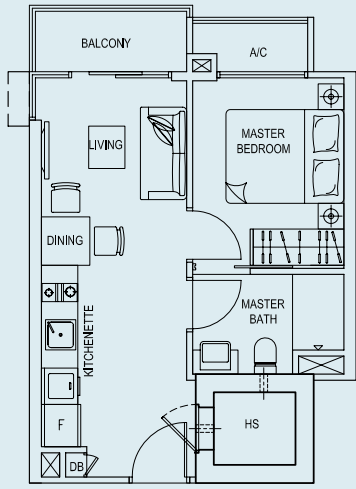
# CLASSIC

**TYPE 1**  
 102 sq.m. / 1098 sq.ft.  
 Unit #03-10 & #04-10



**TYPE 1A**  
 102 sq.m. / 1098 sq.ft.  
 Unit #02-10

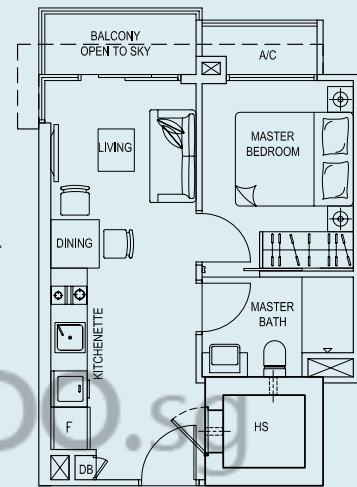




### TYPE 2

38 sq.m. / 409 sq.ft.

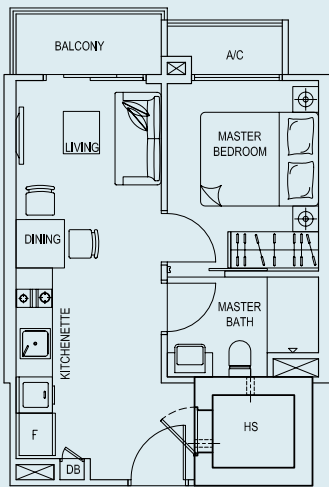
Unit #02-11, #03-11 & #04-11



### TYPE 2A

38 sq.m. / 409 sq.ft.

Unit #05-11



### TYPE 3

38 sq.m. / 409 sq.ft.

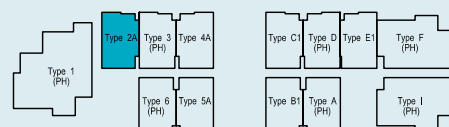
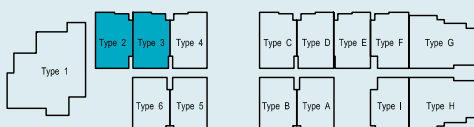
Unit #02-12, #03-12 & #04-12

Block 175

Block 173

Block 175

Block 173

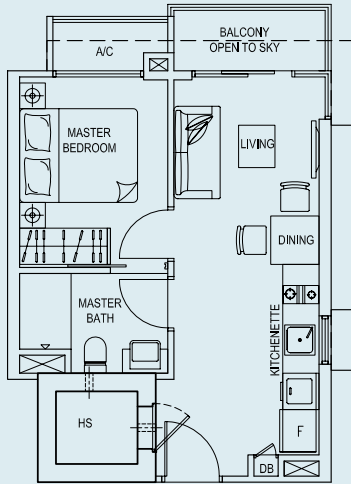
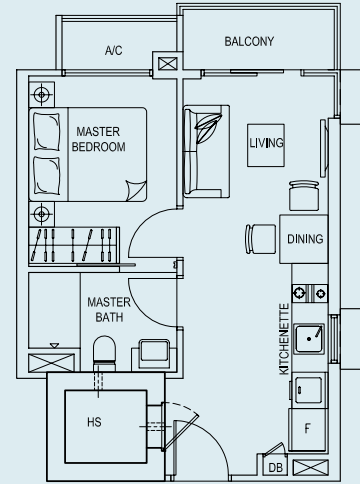


# CLASSIC

## TYPE 4

38 sq.m. / 409 sq.ft.

Unit #02-13, #03-13 & #04-13



## TYPE 4A

38 sq.m. / 409 sq.ft.

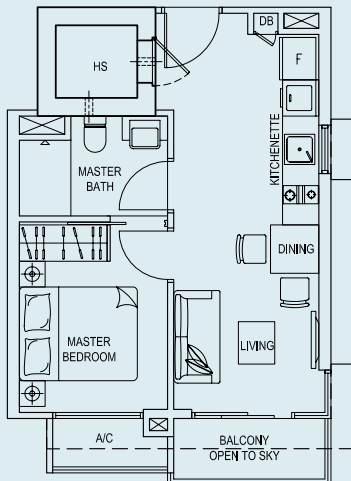
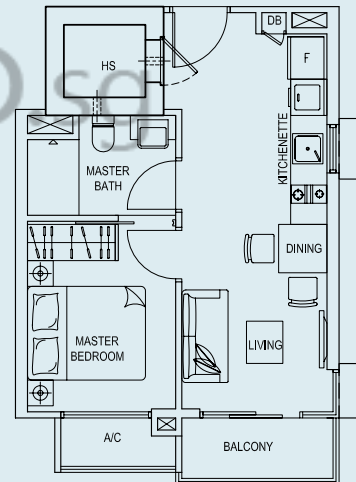
Unit #05-13



## TYPE 5

38 sq.m. / 409 sq.ft.

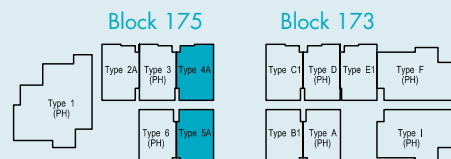
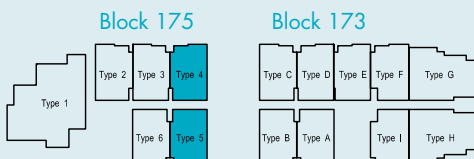
Unit #02-14, #03-14 & #04-14



## TYPE 5A

38 sq.m. / 409 sq.ft.

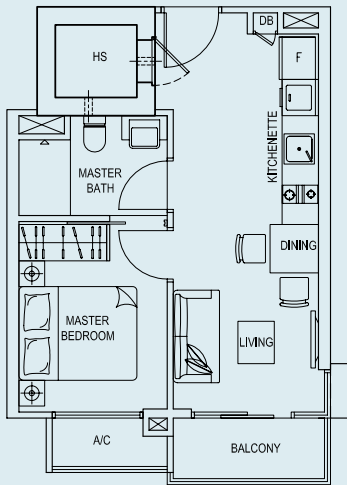
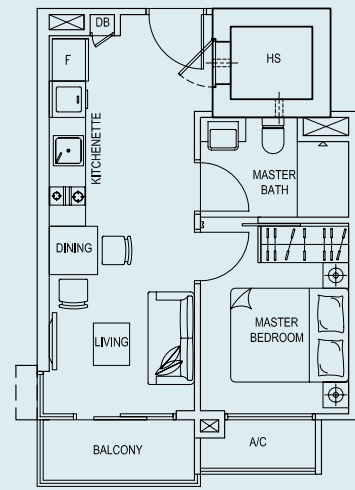
Unit #05-14



### TYPE 6

38 sq.m. / 409 sq.ft.

Unit #02-15, #03-15 & #04-15



### TYPE A

37 sq.m. / 398 sq.ft.

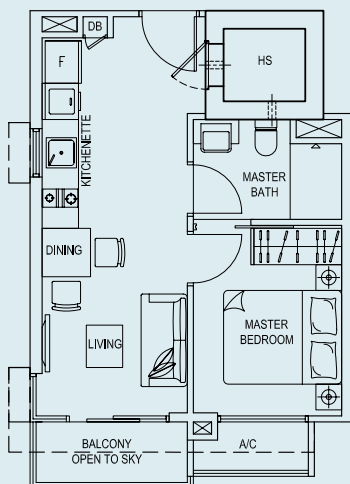
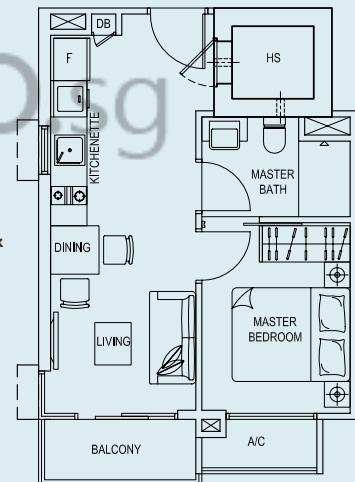
Unit #02-01, #03-01 & #04-01



### TYPE B

37 sq.m. / 398 sq.ft.

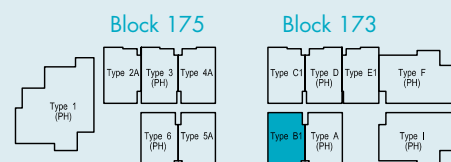
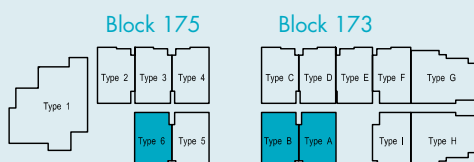
Unit #02-02, #03-02 & #04-02



### TYPE B1

37 sq.m. / 398 sq.ft.

Unit #05-02

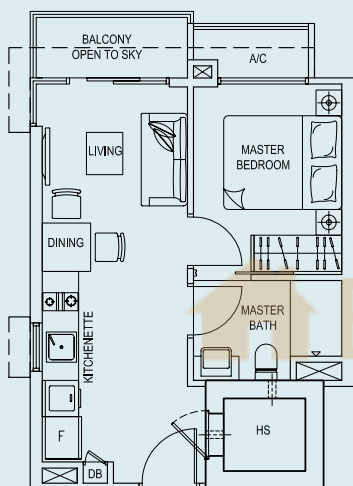
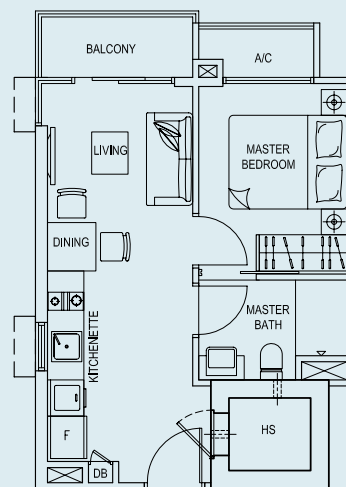


# CLASSIC

## TYPE C

37 sq.m. / 398 sq.ft.

Unit #02-03, #03-03 & #04-03



## TYPE C1

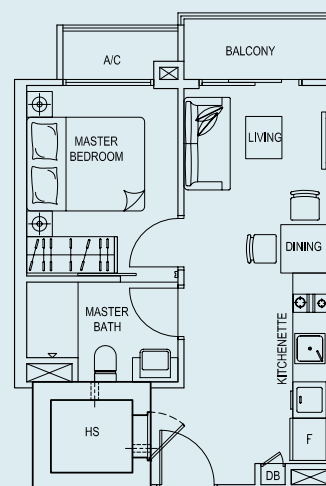
37 sq.m. / 398 sq.ft.

Unit #05-03

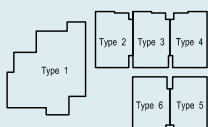
## TYPE D

38 sq.m. / 409 sq.ft.

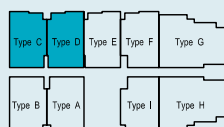
Unit #02-04, #03-04 & #04-04



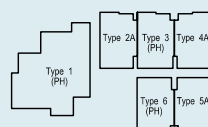
Block 175



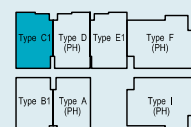
Block 173

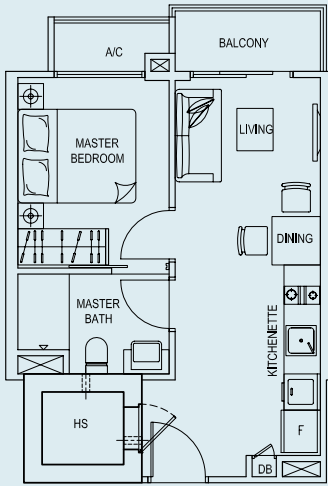


Block 175



Block 173

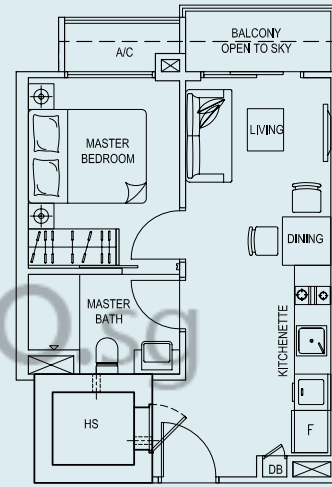




**TYPE E**

38 sq.m. / 409 sq.ft.

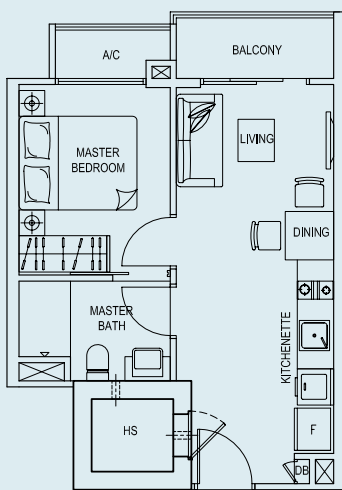
Unit #02-05 & #03-05 & #04-05



**TYPE E1**

38 sq.m. / 409 sq.ft.

Unit #05-05



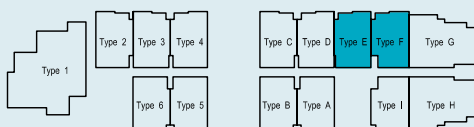
**TYPE F**

38 sq.m. / 409 sq.ft.

Unit #02-06, #03-06 & #04-06

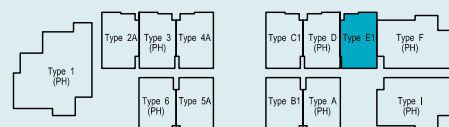
Block 175

Block 173



Block 175

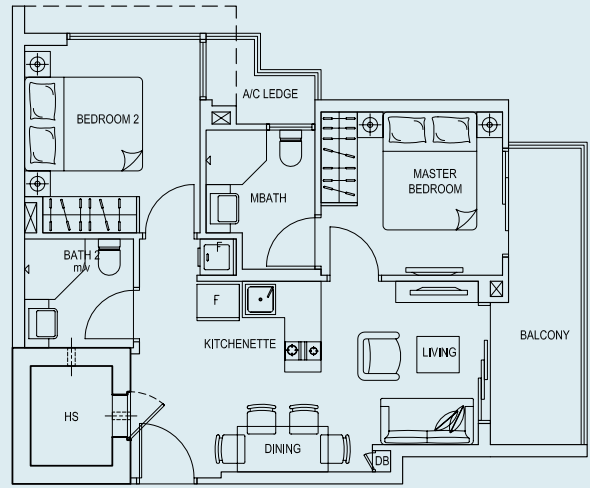
Block 173



# CLASSIC

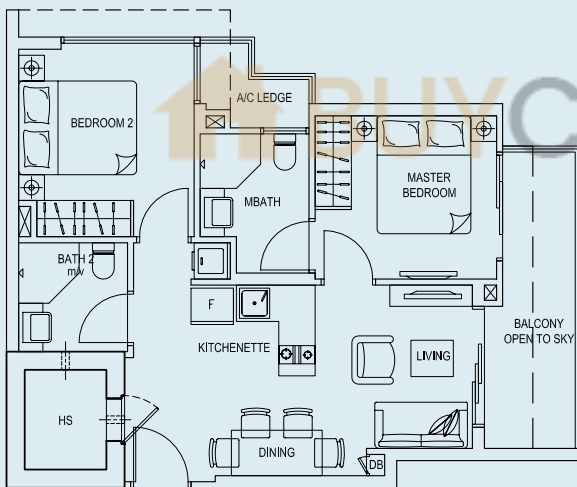
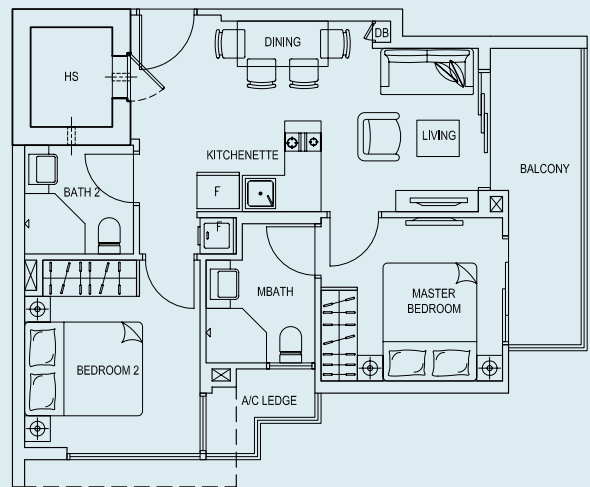
## TYPE G

60 sq.m. / 646 sq.ft.  
Unit #02-07



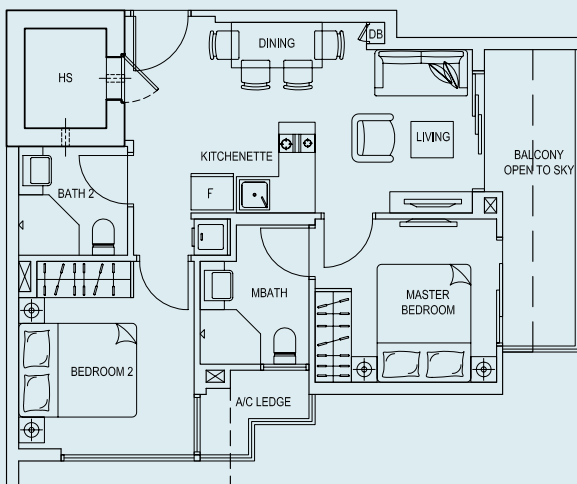
## TYPE H

60 sq.m. / 646 sq.ft.  
Unit #02-08



## TYPE G1

60 sq.m. / 646 sq.ft.  
Unit #03-07



## TYPE H1

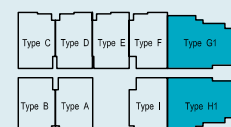
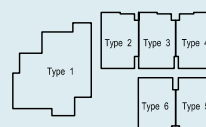
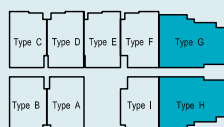
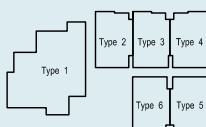
60 sq.m. / 646 sq.ft.  
Unit #03-08

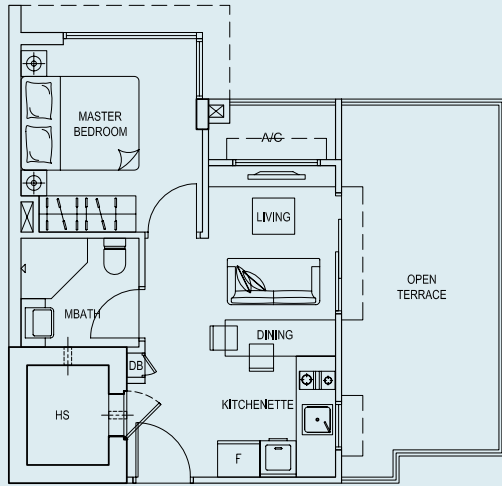
Block 175

Block 173

Block 175

Block 173

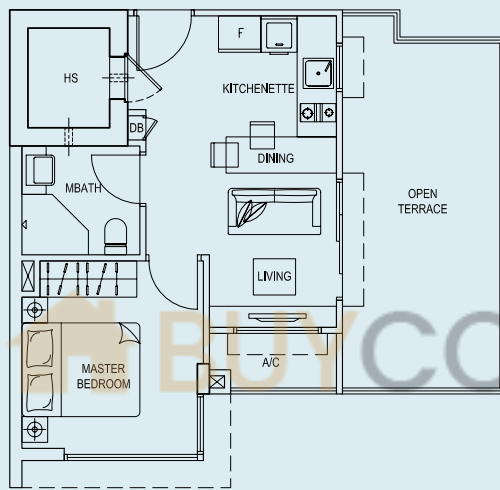




**TYPE G2**

52 sq.m. / 560 sq.ft.

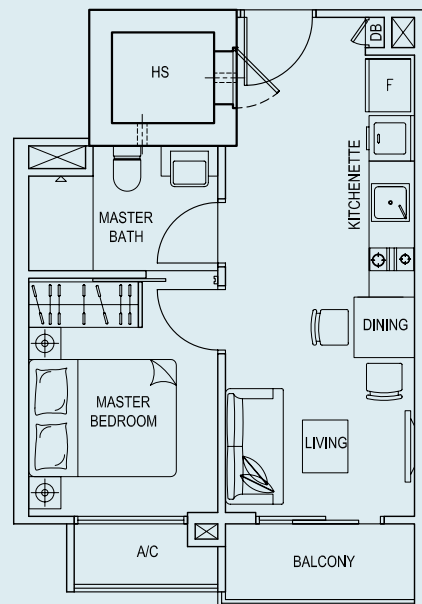
Unit #04-07



**TYPE H2**

52 sq.m. / 560 sq.ft.

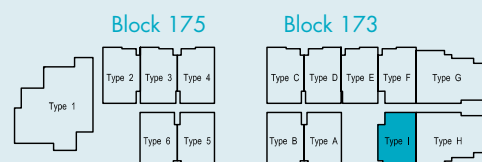
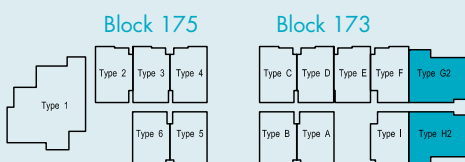
Unit #04-08



**TYPE I**

38 sq.m. / 409 sq.ft.

Unit #02-09, #03-09 & #04-09



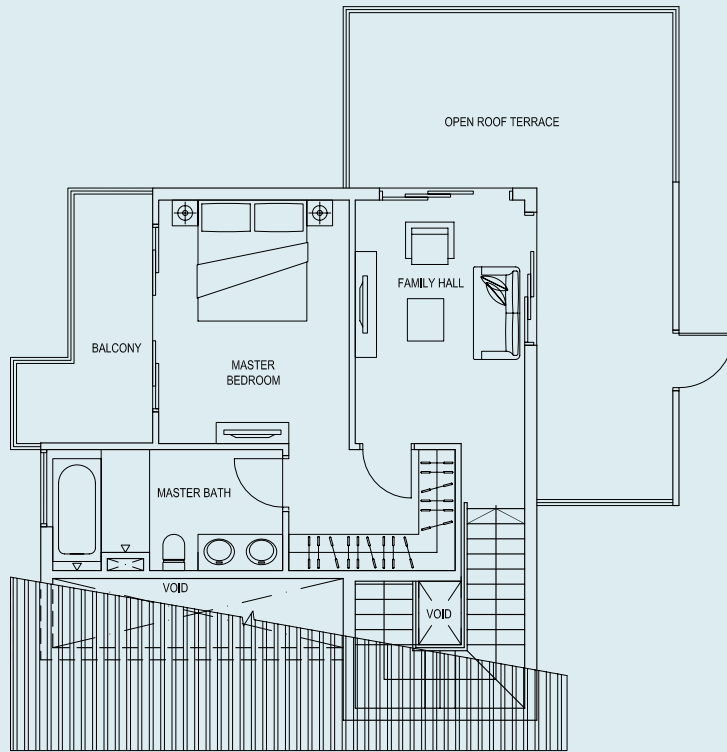


# PENTHOUSE

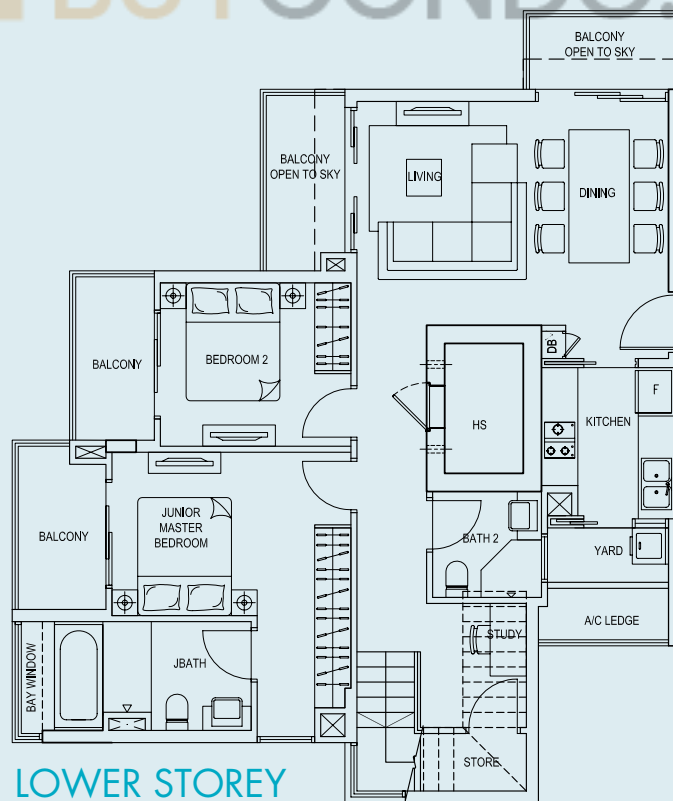
## TYPE 1-PH

188 sq.m. / 2024 sq.ft.

Unit #05-10



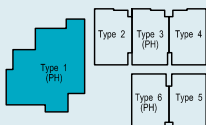
UPPER STOREY



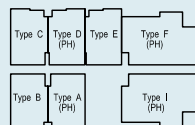
LOWER STOREY

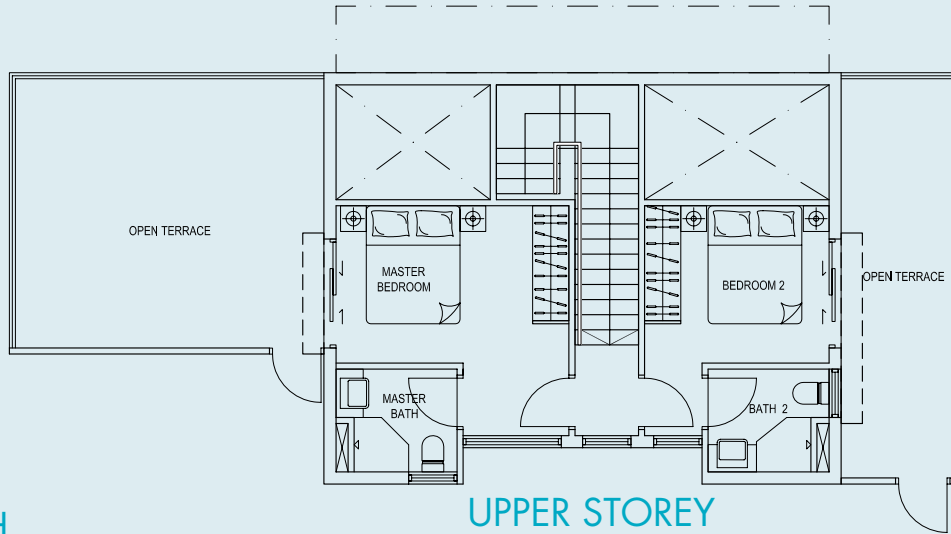


### Block 175



### Block 173



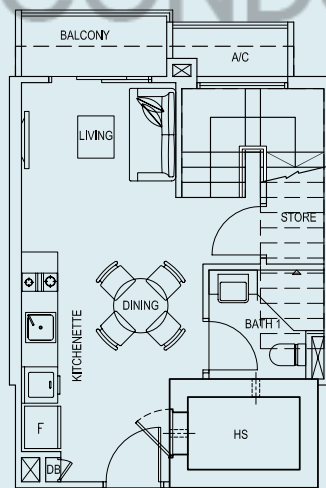


UPPER STOREY

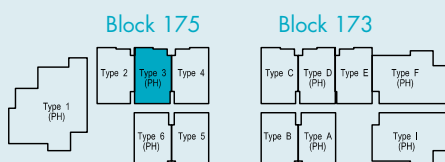
**TYPE 3-PH**

116 sq.m. / 1249 sq.ft.

Unit #05-12



LOWER STOREY

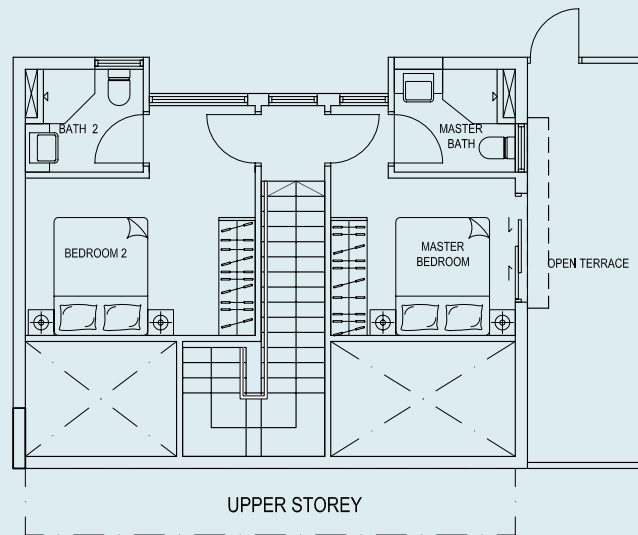


# PENTHOUSE

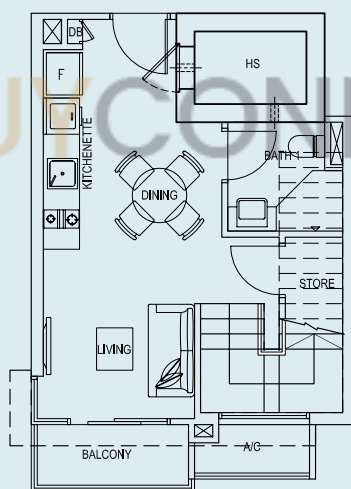
## TYPE 6-PH

91 sq.m. / 980 sq.ft.

Unit #05-15

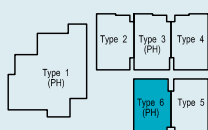


UPPER STOREY

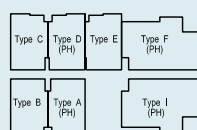


LOWER STOREY

Block 175



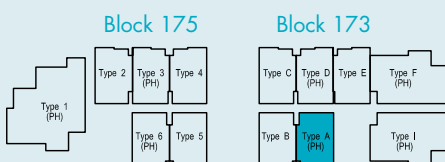
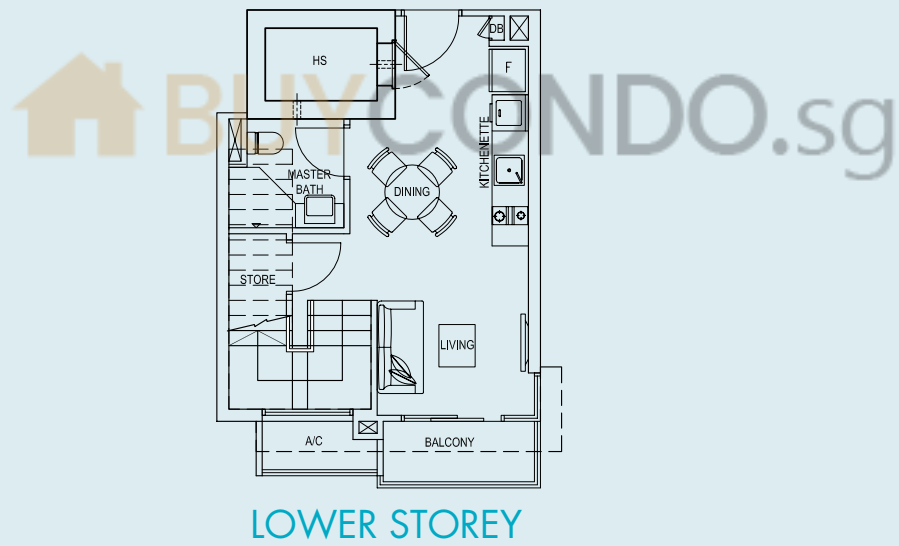
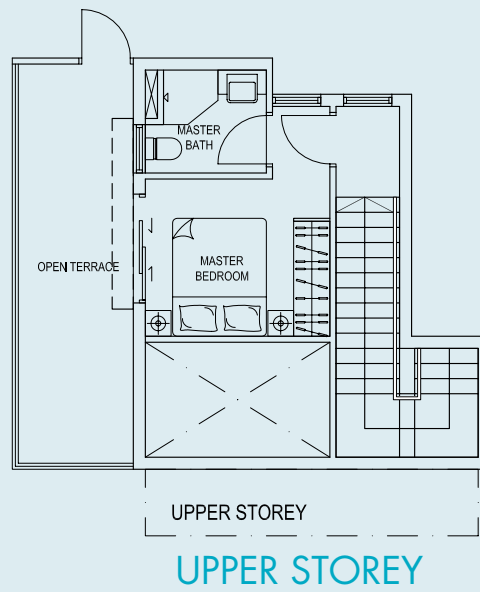
Block 173



## TYPE A-PH

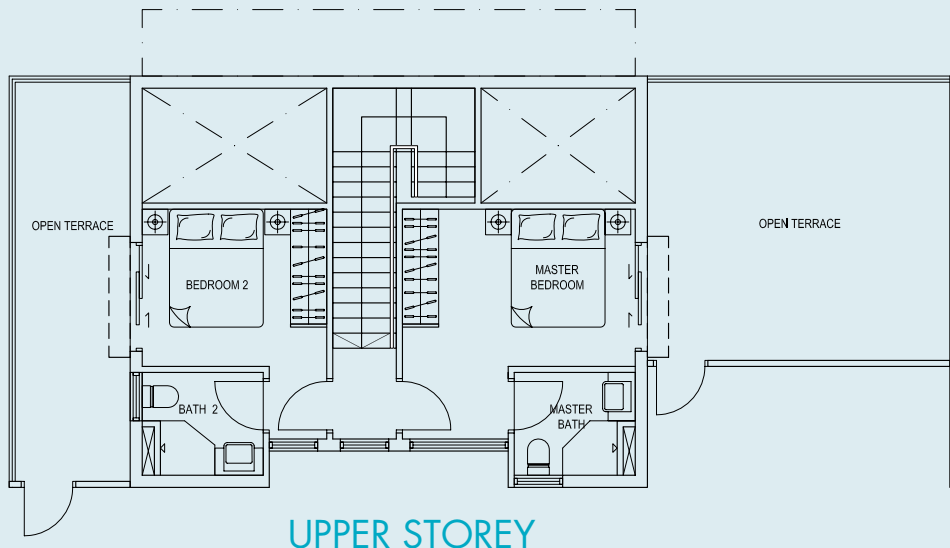
75 sq.m. / 807 sq.ft.

Unit #05-01

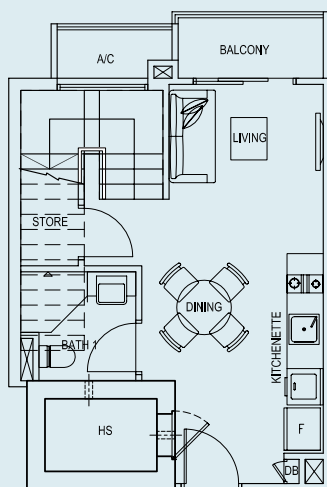


# PENTHOUSE

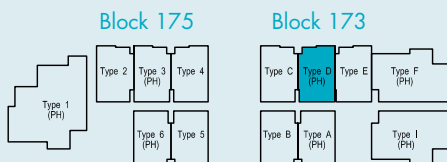
**TYPE D-PH**  
 117 sq.m. / 1259 sq.ft.  
 Unit #05-04



UPPER STOREY



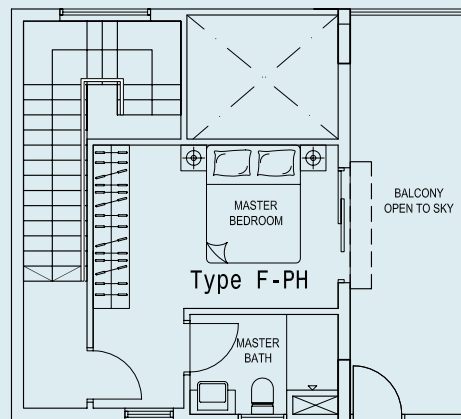
LOWER STOREY



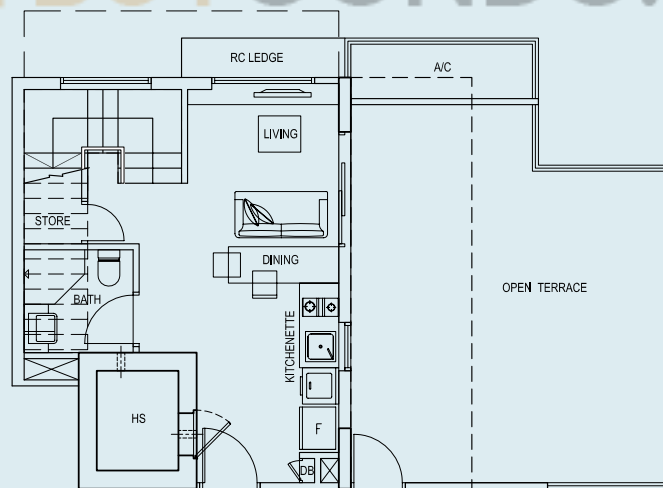
### TYPE F-PH

111 sq.m. / 1195 sq.ft.

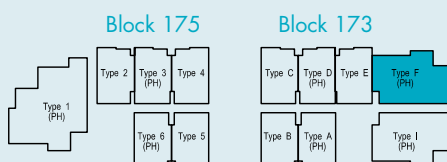
Unit #05-06



UPPER STOREY



LOWER STOREY

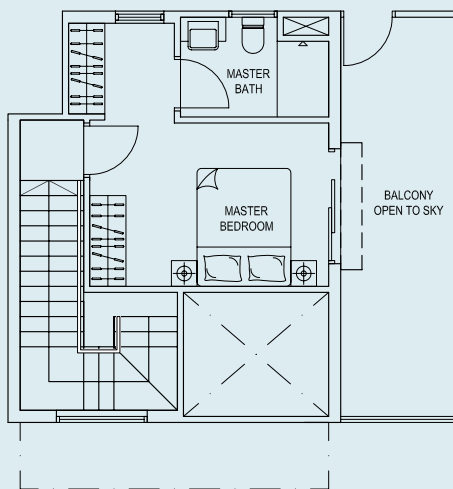


# PENTHOUSE

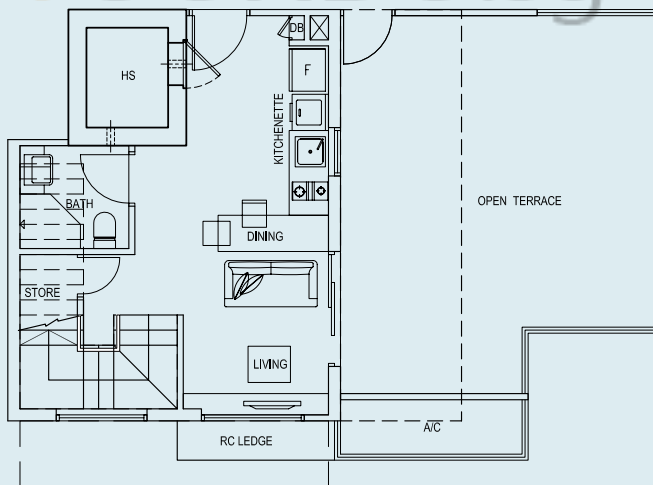
## TYPE I-PH

109 sq.m. / 1173 sq.ft.

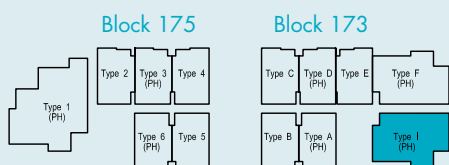
Unit #05-09



UPPER STOREY



LOWER STOREY





OCEAN  
FRONT suites

DEVELOPER

**REGAL REALTY PTE LTD**

Company Reg No: 201228669Z

291 Joo Chiat Road, #05-03 JK Centre, Singapore 427543  
Tel: 6604 9271

**For enquiries, please call 6538 2205/6538 2206**

Developer: REGAL REALTY PTE LTD • Tenure of Land: Leasehold estate for 946 Years 6 Months 2 Days commencing from 27 November 1937  
Lot No.: 1876A & 4791M MK 31 • Expected TOP Date: March 2016 • Expected Date of Legal Completion: March 2019  
BP Approval Ref: A0623-01109-2011-BP01 • Approved On: 27 Feb 2013 • Developer's License No: C1028