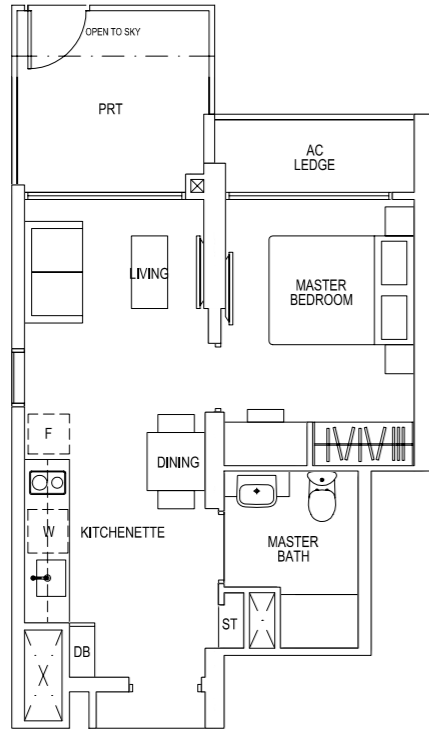


# ≈ 1 BEDROOM ≈

## Type A1-P

45 sq m | 484 sq ft

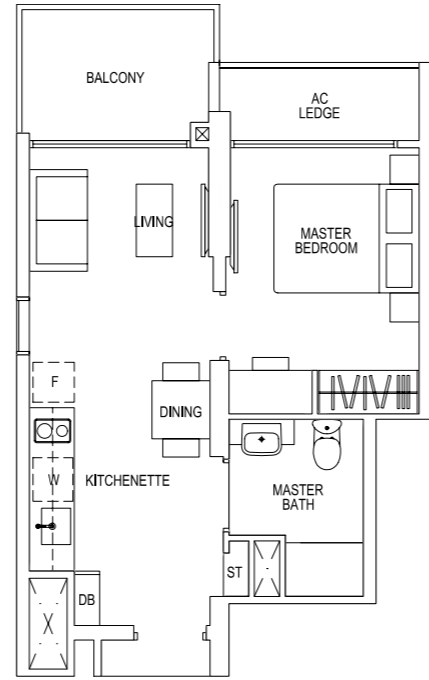
#05-03,  
#05-14



## Type A1

43 sq m | 463 sq ft

#06-03 TO #35-03,  
#06-14 TO #35-14

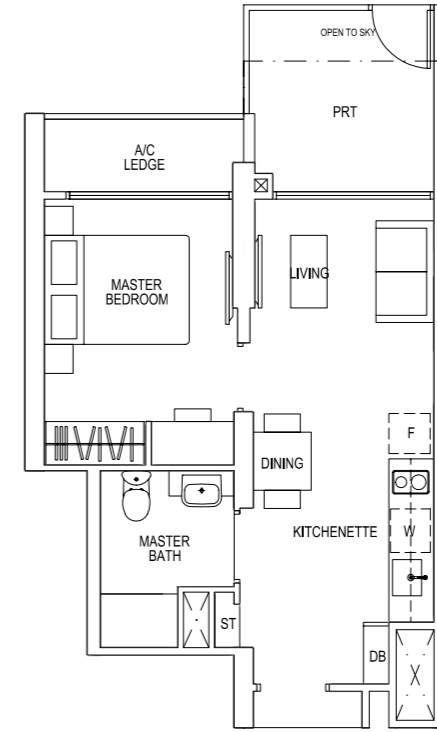


# ≈ 1 BEDROOM ≈

## Type A2-P

45 sq m | 484 sq ft

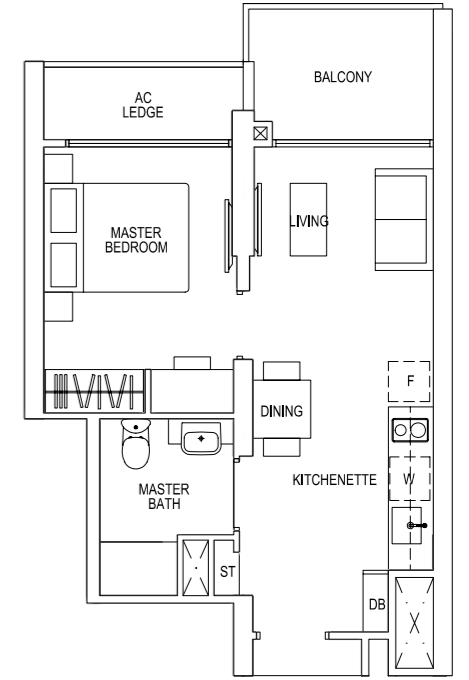
#05-04,  
#05-15



## Type A2

43 sq m | 463 sq ft

#06-04 TO #35-04,  
#06-15 TO #35-15



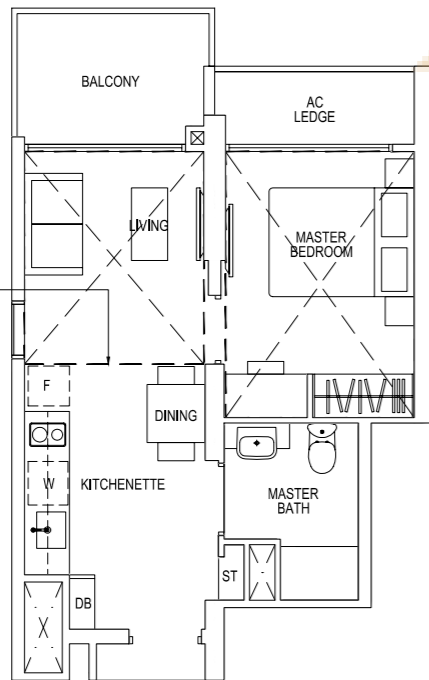
## Type A1-R

62 sq m | 667 sq ft

Incl. of 19 sq m / 204 sq ft of void area (high ceiling) above living & master bedroom

#36-03,  
#36-14

dotted line denotes high ceiling above living & master bedroom



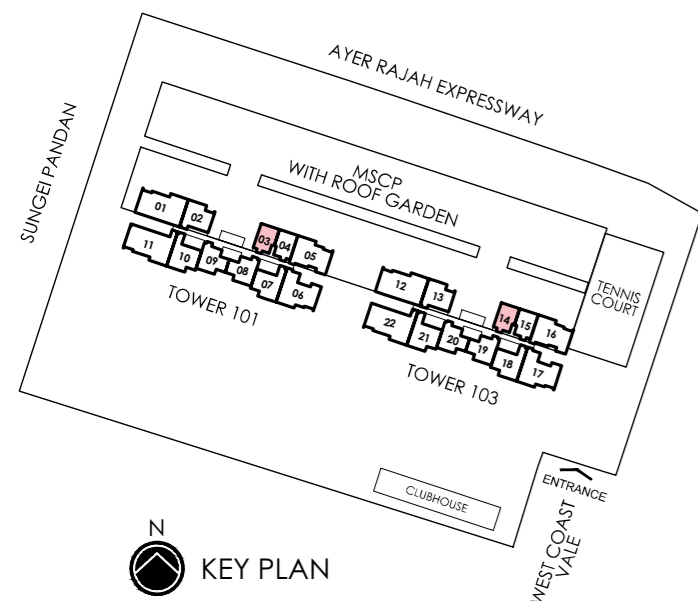
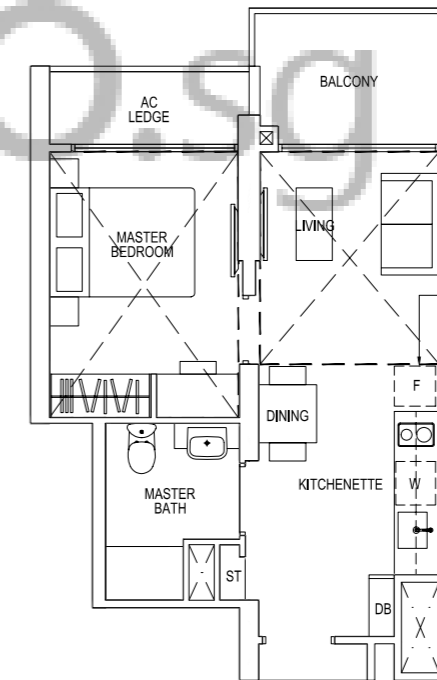
## Type A2-R

62 sq m | 667 sq ft

Incl. of 19 sq m / 204 sq ft of void area (high ceiling) above living & master bedroom

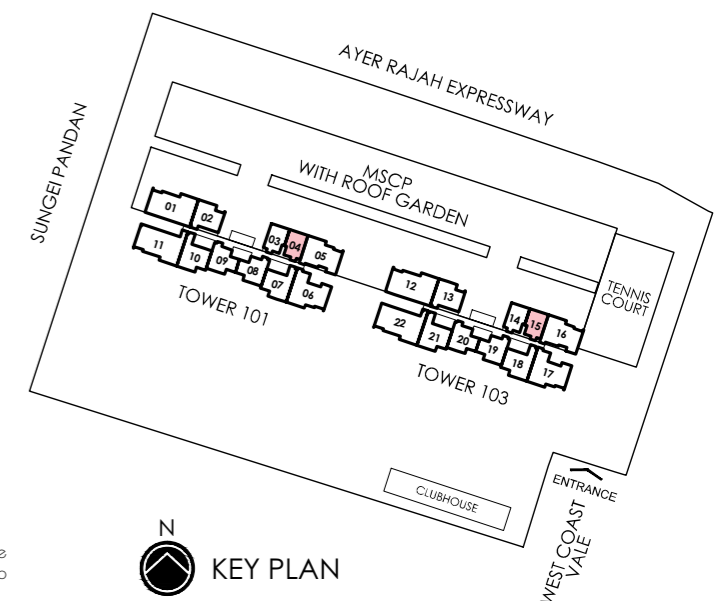
#36-04,  
#36-15

dotted line denotes high ceiling above living & master bedroom



0 1 2 3 4 5M

Area includes pes, prt, a/c ledge, balcony and void area. The plans are subject to change as may be required or approved by the relevant authorities. Areas are approximate measurements only and are subject to final survey. Plans are not drawn to scale and do not form part of the contract.



0 1 2 3 4 5M

Area includes pes, prt, a/c ledge, balcony and void area. The plans are subject to change as may be required or approved by the relevant authorities. Areas are approximate measurements only and are subject to final survey. Plans are not drawn to scale and do not form part of the contract.



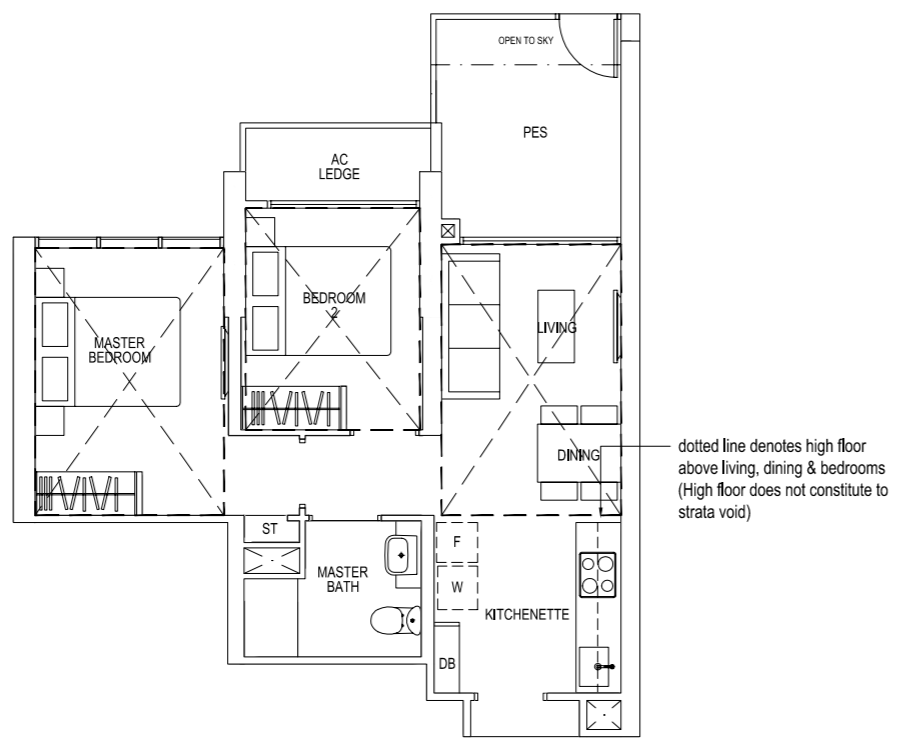
# ≈ 2 BEDROOMS EXECUTIVE ≈

## Type B1-P

58 sq m | 624 sq ft

- #01-08\*,
- #01-09,
- #01-19\*,
- #01-20

\* Mirror Image



dotted line denotes high floor above living, dining & bedrooms (High floor does not constitute to strata void)

# ≈ 2 BEDROOMS EXECUTIVE ≈

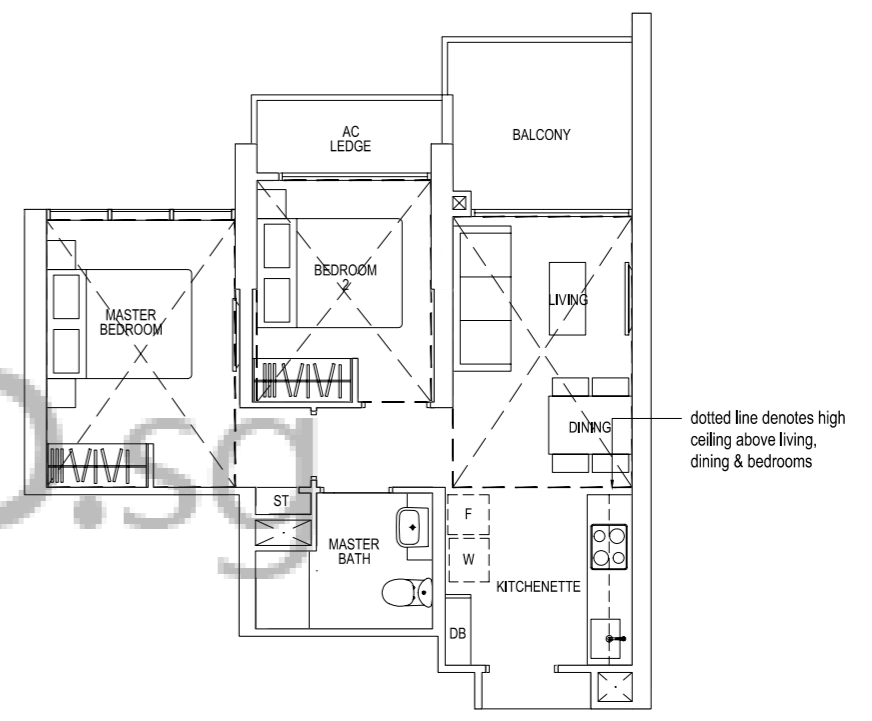
## Type B1-R

86 sq m | 926 sq ft

Incl. of 30 sq m / 322 sq ft of void area (high ceiling) above living, dining & bedrooms

- #36-08\*,
- #36-09,
- #36-19\*,
- #36-20

\* Mirror Image



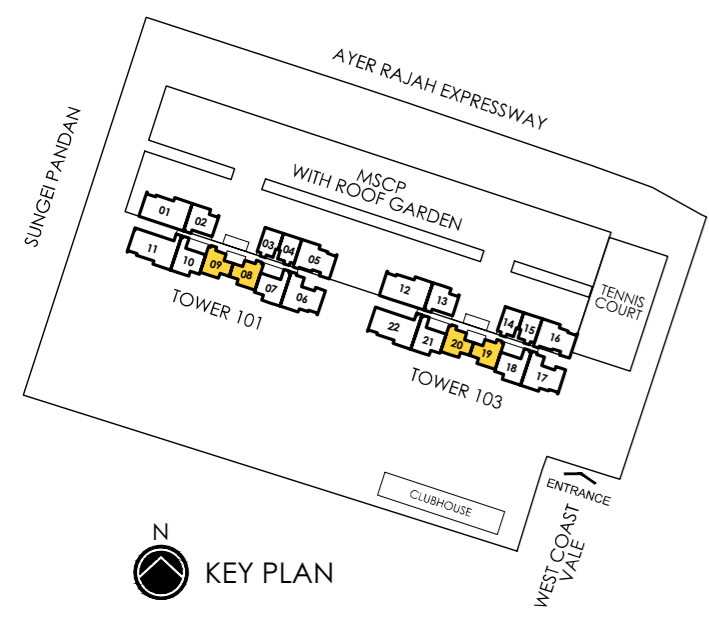
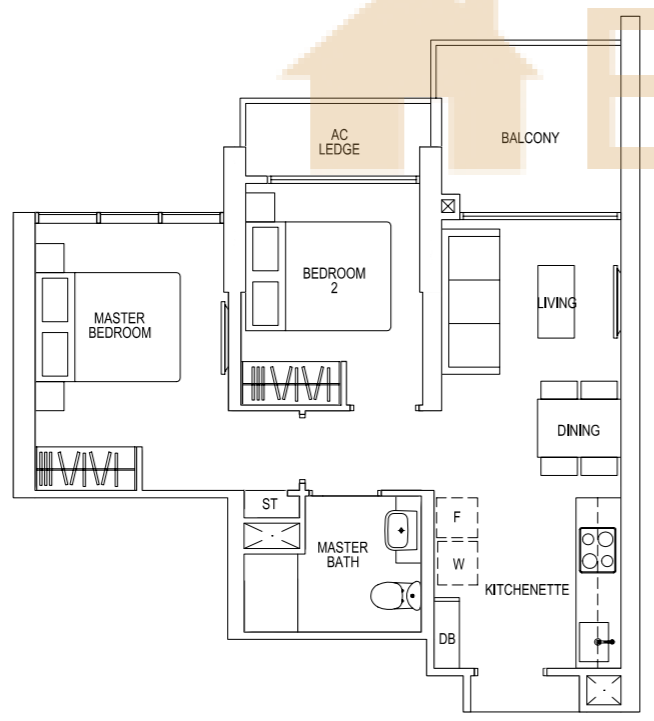
dotted line denotes high ceiling above living, dining & bedrooms

## Type B1

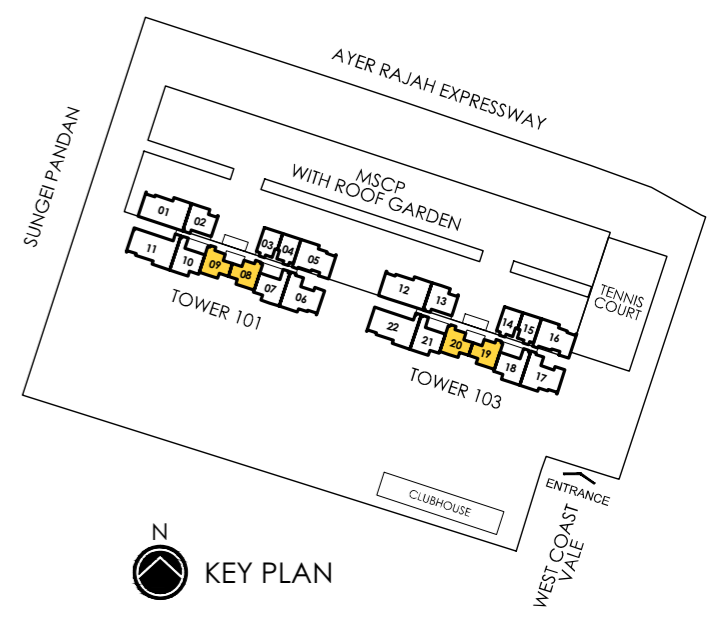
56 sq m | 603 sq ft

- #02-08\* TO #35-08\*,
- #02-09 TO #35-09,
- #02-19\* TO #35-19\*,
- #02-20 TO #35-20

\* Mirror Image



Area includes pes, prt, a/c ledge, balcony and void area. The plans are subject to change as may be required or approved by the relevant authorities. Areas are approximate measurements only and are subject to final survey. Plans are not drawn to scale and do not form part of the contract



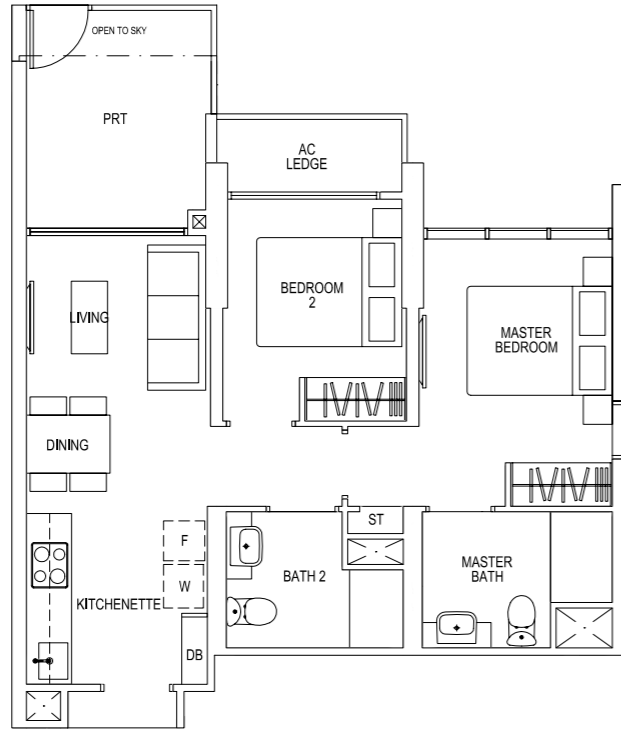
Area includes pes, prt, a/c ledge, balcony and void area. The plans are subject to change as may be required or approved by the relevant authorities. Areas are approximate measurements only and are subject to final survey. Plans are not drawn to scale and do not form part of the contract

# ≈ 2 BEDROOMS DELUXE ≈

## Type B2-P

62 sq m | 667 sq ft

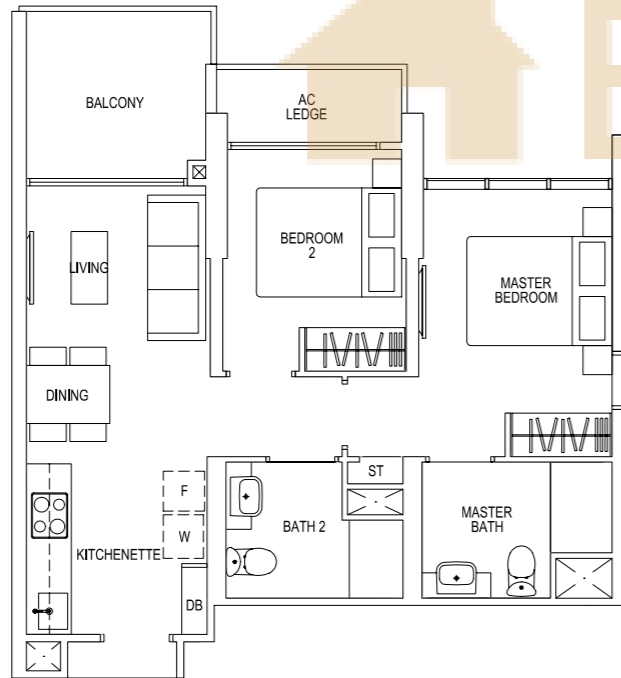
#05-02,  
#05-13



## Type B2

60 sq m | 646 sq ft

#06-02 TO #35-02,  
#06-13 TO #35-13



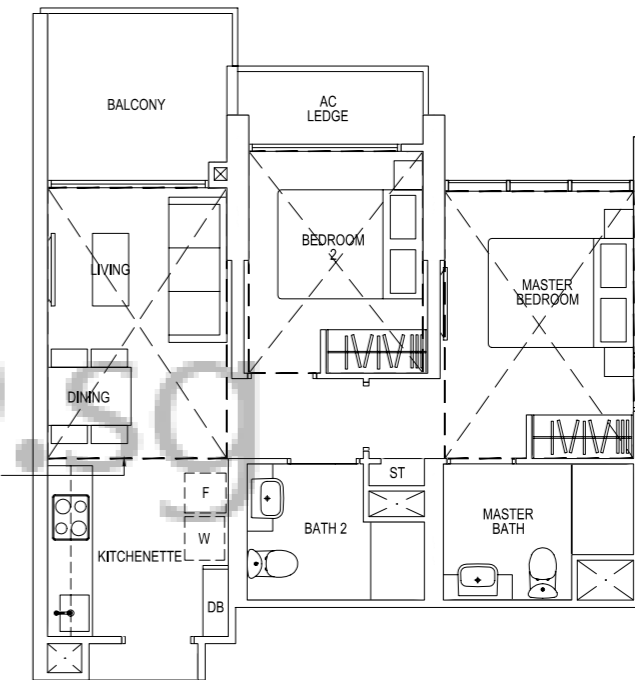
# ≈ 2 BEDROOMS DELUXE ≈

## Type B2-R

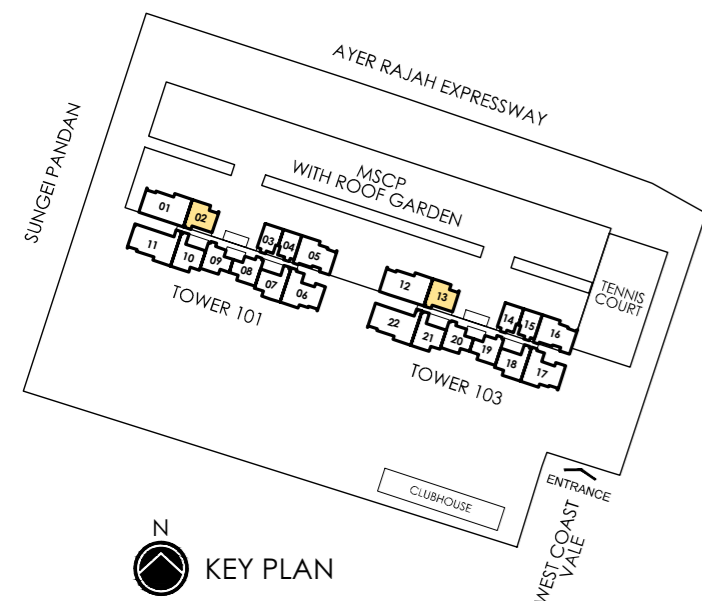
90 sq m | 969 sq ft

Incl. of 30 sq m / 322 sq ft of  
void area (high ceiling) above  
living, dining & bedrooms

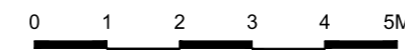
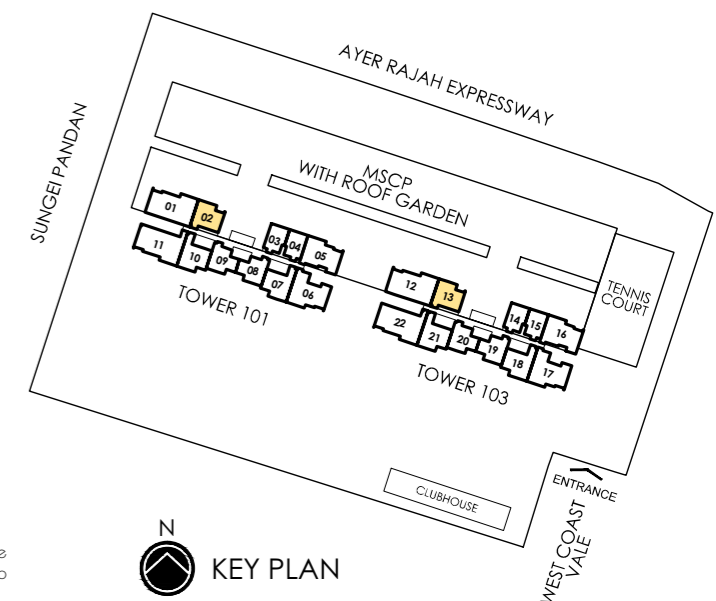
#36-02,  
#36-13



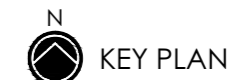
dotted line denotes high  
ceiling above living,  
dining & bedrooms



Area includes pes, prt, a/c ledge, balcony and void area. The plans are subject to change as may be required or approved by the relevant authorities. Areas are approximate measurements only and are subject to final survey. Plans are not drawn to scale and do not form part of the contract



Area includes pes, prt, a/c ledge, balcony and void area. The plans are subject to change as may be required or approved by the relevant authorities. Areas are approximate measurements only and are subject to final survey. Plans are not drawn to scale and do not form part of the contract



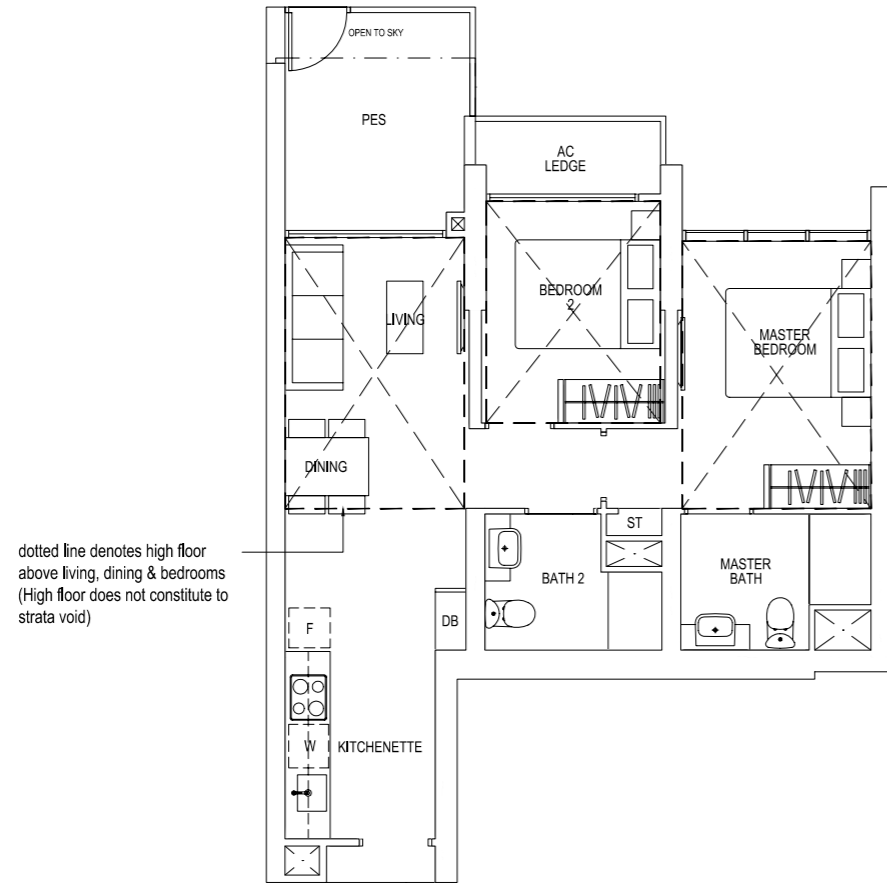
# ≈ 2 BEDROOMS DELUXE ≈

## Type B3-P

68 sq m | 732 sq ft

- #01-07,
- #01-10\*,
- #01-18,
- #01-21\*

\* Mirror Image

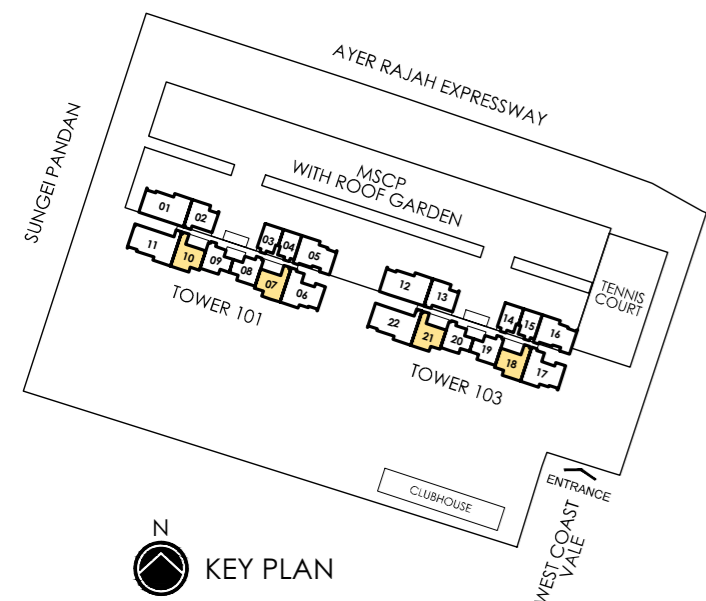
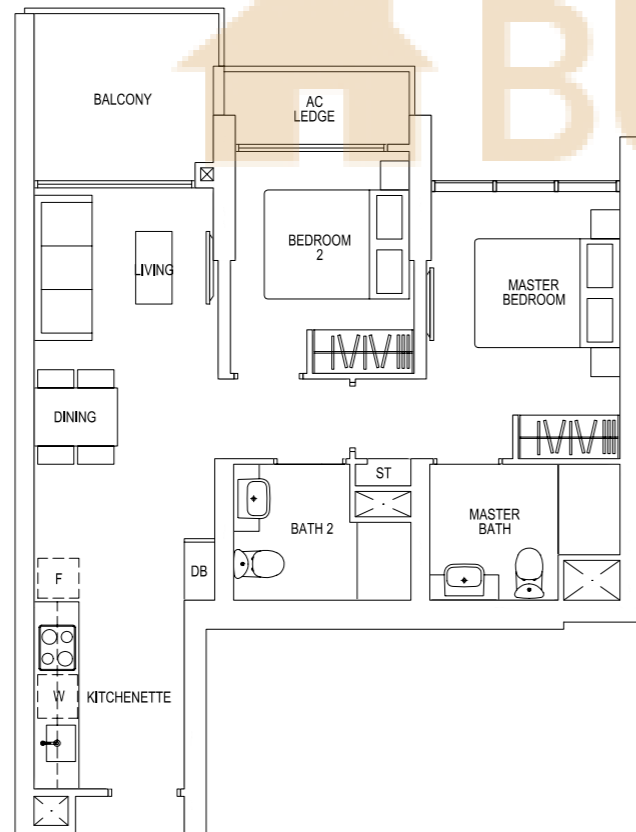


## Type B3

66 sq m | 710 sq ft

- #02-07 TO #35-07,
- #02-10\* TO #35-10\*,
- #02-18 TO #35-18,
- #02-21\* TO #35-21\*

\* Mirror Image



Area includes pes, prt, a/c ledge, balcony and void area. The plans are subject to change as may be required or approved by the relevant authorities. Areas are approximate measurements only and are subject to final survey. Plans are not drawn to scale and do not form part of the contract

# ≈ 2 BEDROOMS DELUXE ≈

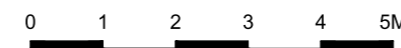
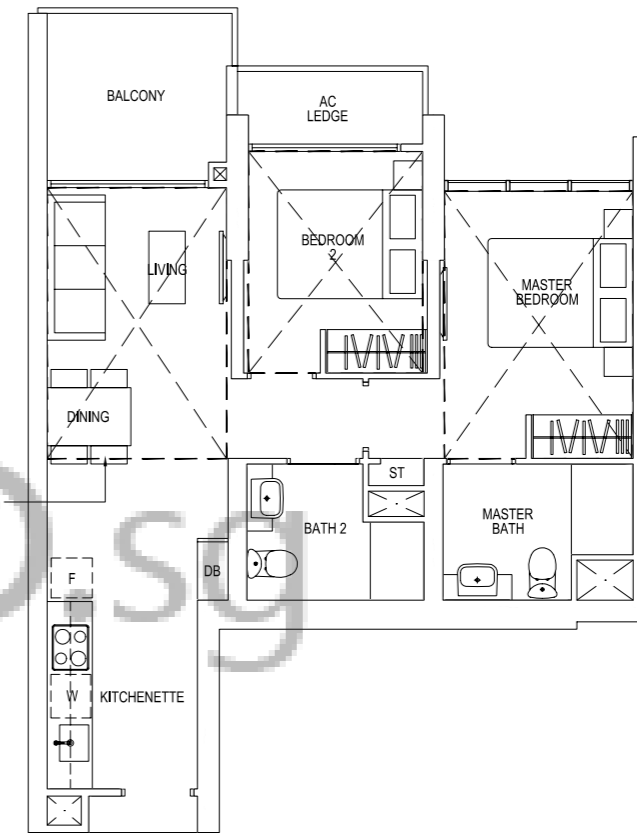
## Type B3-R

96 sq m | 1033 sq ft

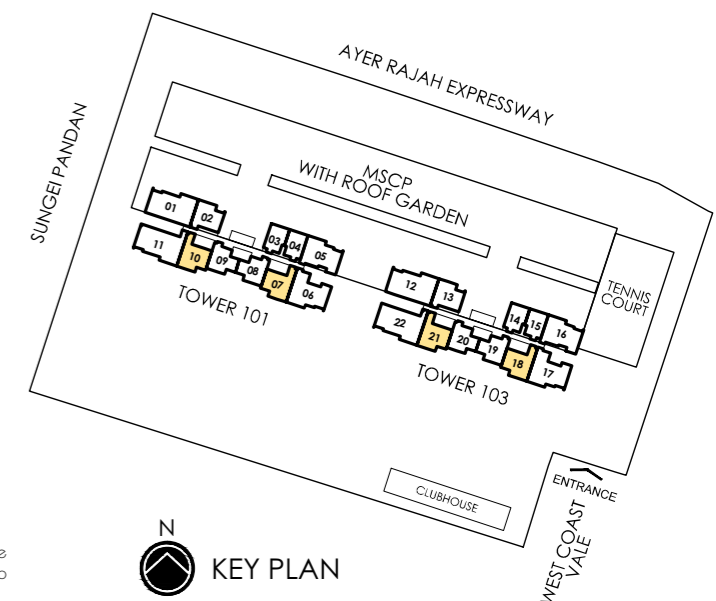
Incl. of 30 sq m / 322 sq ft of void area (high ceiling) above living, dining & bedrooms

- #36-07,
- #36-10\*,
- #36-18,
- #36-21\*

\* Mirror Image



Area includes pes, prt, a/c ledge, balcony and void area. The plans are subject to change as may be required or approved by the relevant authorities. Areas are approximate measurements only and are subject to final survey. Plans are not drawn to scale and do not form part of the contract



# ≈ 3 BEDROOMS EXECUTIVE ≈

## Type C1-P

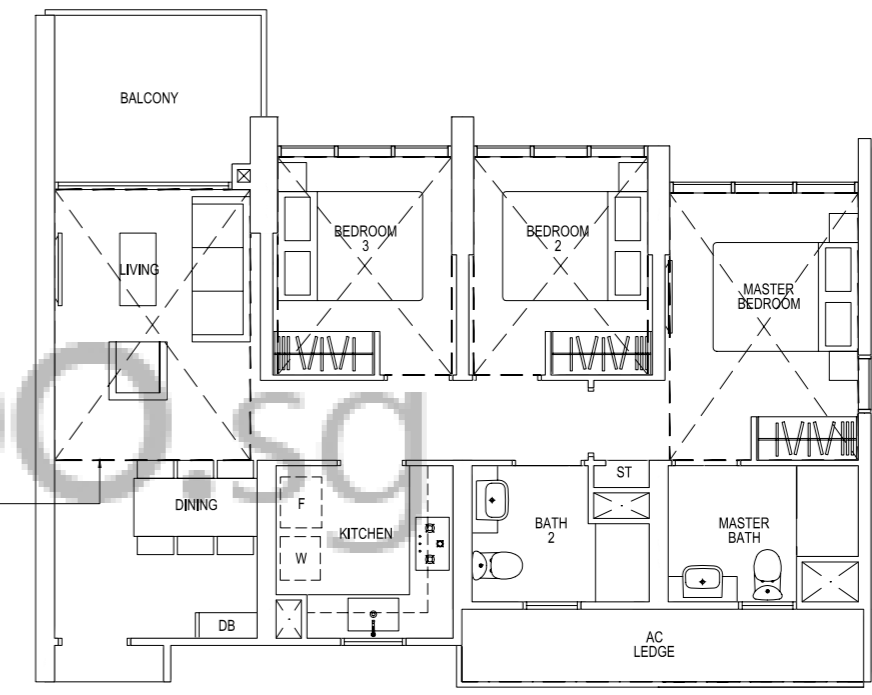
86 sq m | 926 sq ft  
 #05-05,  
 #05-16



# ≈ 3 BEDROOMS EXECUTIVE ≈

## Type C1-R

124 sq m | 1335 sq ft  
 Incl. of 40 sq m / 430 sq ft of  
 void area (high ceiling) above  
 living & bedrooms  
 #36-05,  
 #36-16



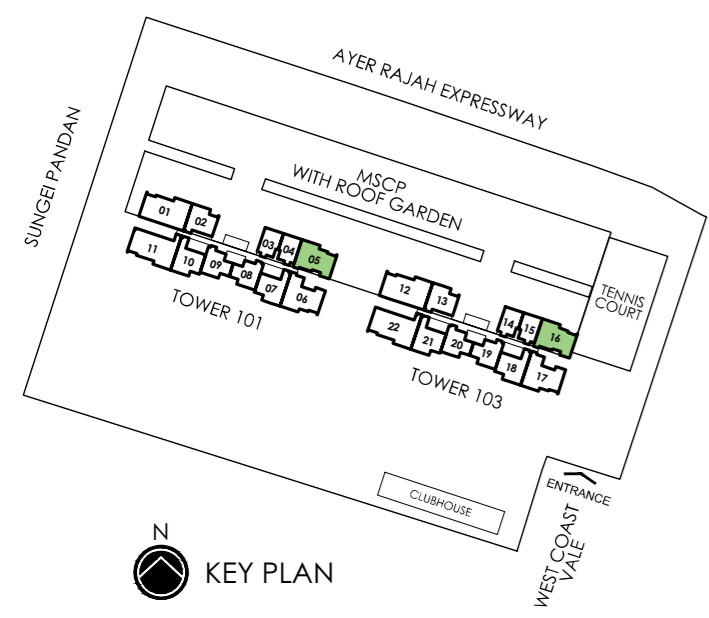
## Type C1

84 sq m | 904 sq ft  
 #06-05 TO #35-05,  
 #06-16 TO #35-16

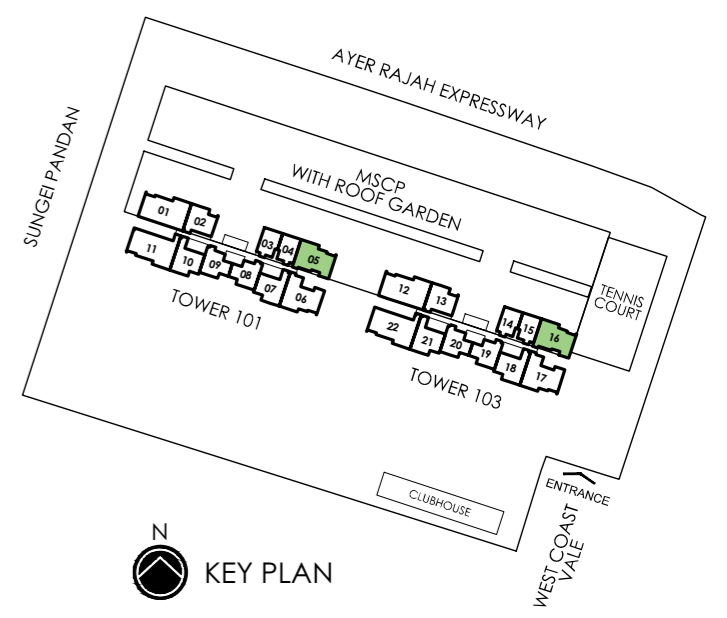


BUYCONDO.SG

dotted line denotes high ceiling above living & bedrooms



Area includes pes, prt, a/c ledge, balcony and void area. The plans are subject to change as may be required or approved by the relevant authorities. Areas are approximate measurements only and are subject to final survey. Plans are not drawn to scale and do not form part of the contract



Area includes pes, prt, a/c ledge, balcony and void area. The plans are subject to change as may be required or approved by the relevant authorities. Areas are approximate measurements only and are subject to final survey. Plans are not drawn to scale and do not form part of the contract

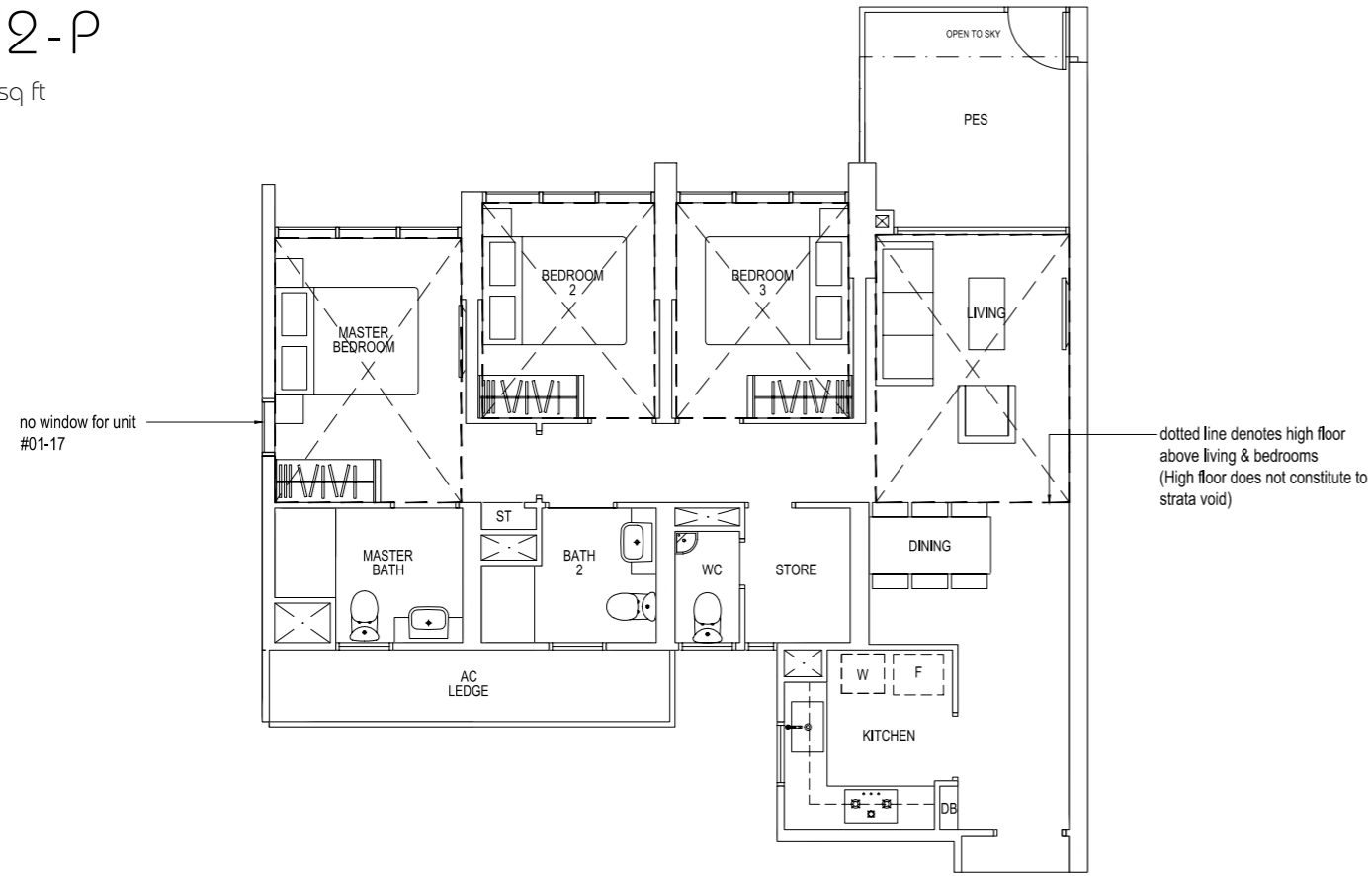


# ≈ 3 BEDROOMS DELUXE ≈

## Type C2-P

94 sq m | 1012 sq ft

#01-06,  
#01-17

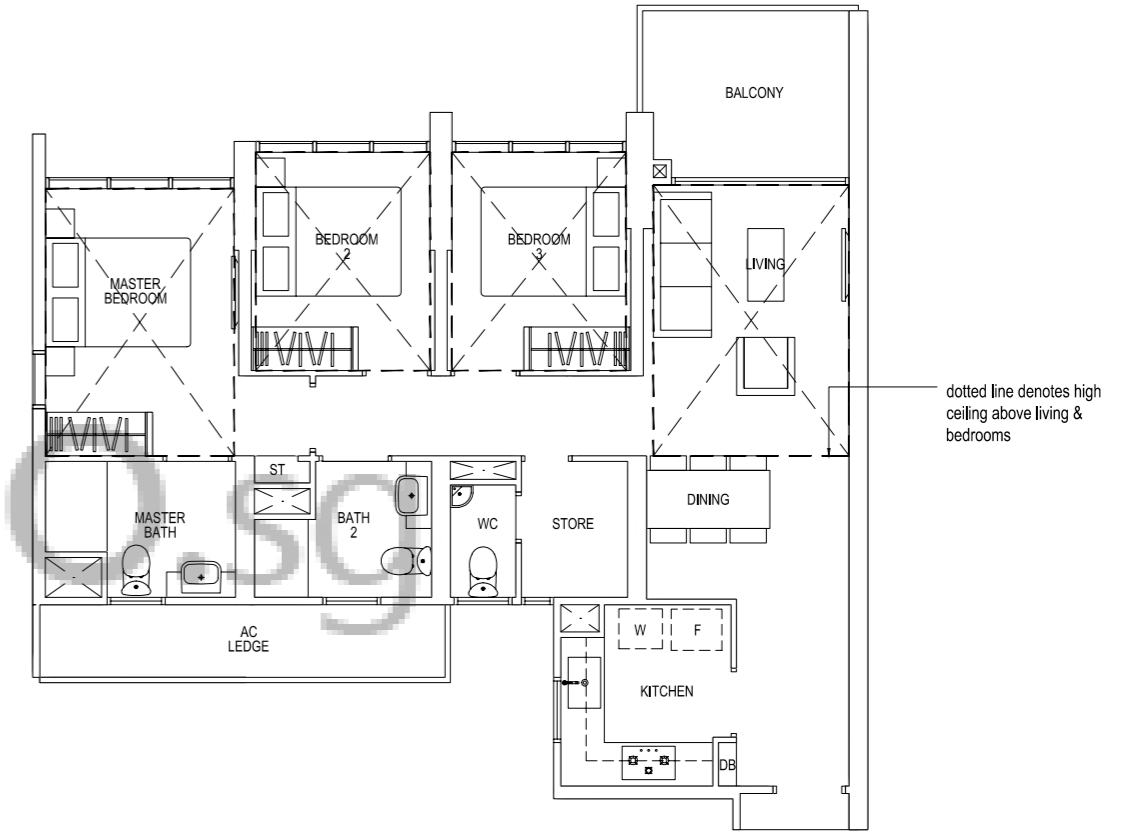


# ≈ 3 BEDROOMS DELUXE ≈

## Type C2-R

132 sq m | 1421 sq ft  
Incl. of 40 sq m / 430 sq ft of  
void area (high ceiling) above  
living & bedrooms

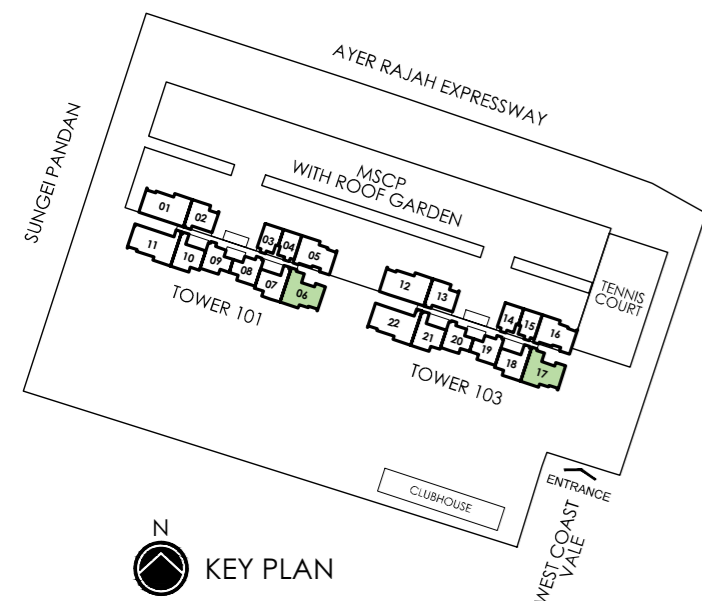
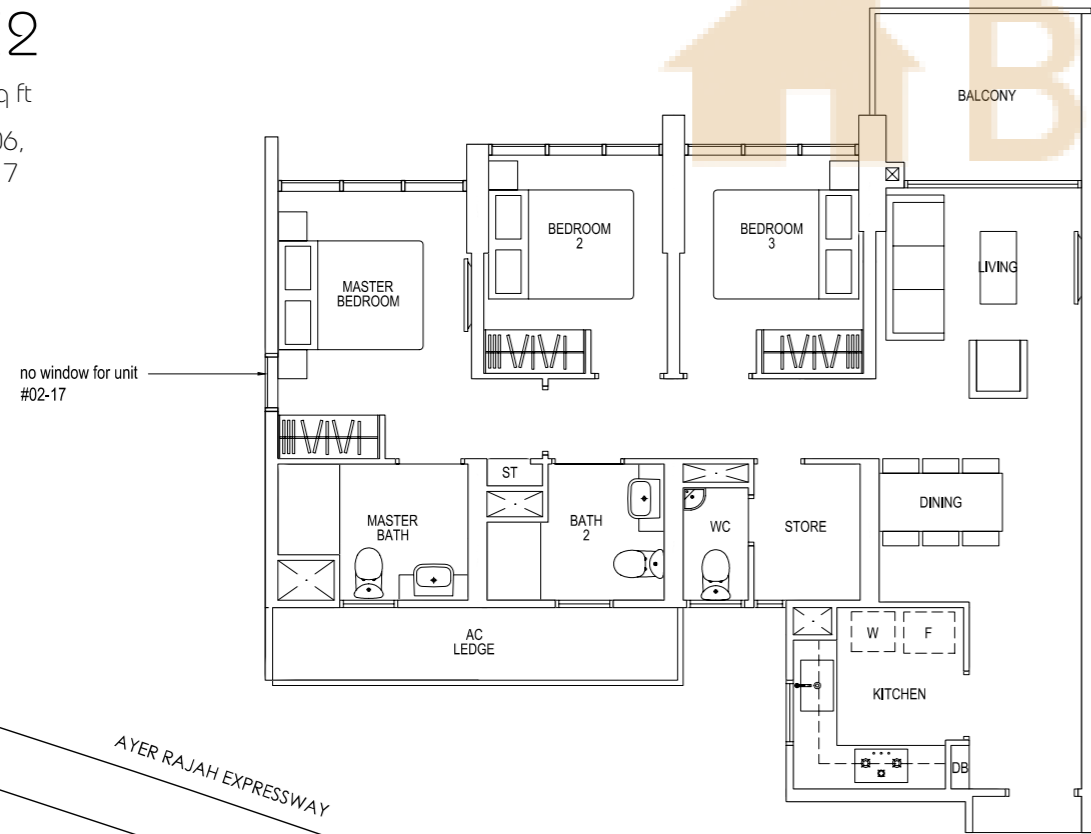
#36-06,  
#36-17



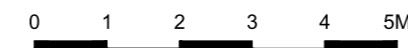
## Type C2

92 sq m | 990 sq ft

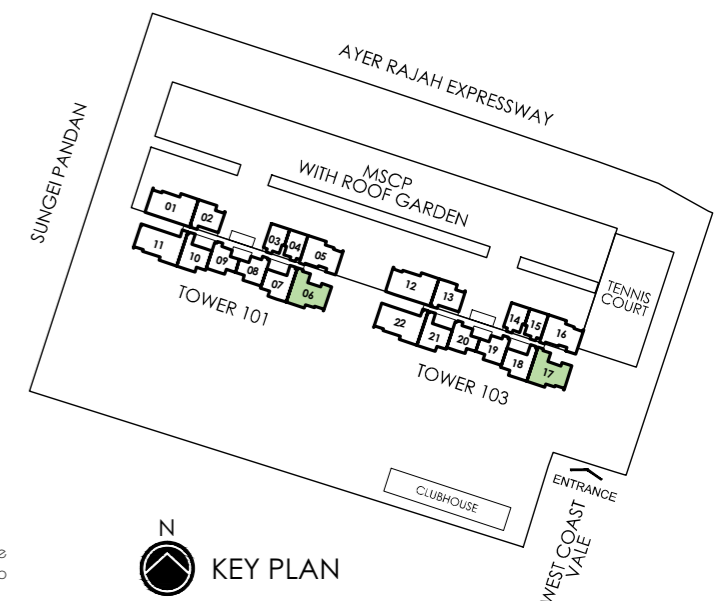
#02-06 TO #35-06,  
#02-17 TO #35-17



Area includes pes, prt, a/c ledge, balcony and void area. The plans are subject to change as may be required or approved by the relevant authorities. Areas are approximate measurements only and are subject to final survey. Plans are not drawn to scale and do not form part of the contract.



Area includes pes, prt, a/c ledge, balcony and void area. The plans are subject to change as may be required or approved by the relevant authorities. Areas are approximate measurements only and are subject to final survey. Plans are not drawn to scale and do not form part of the contract.



KEY PLAN

# ≈ 4 BEDROOMS ≈

## Type D1-P

111 sq m | 1195 sq ft

#05-01,  
#05-12

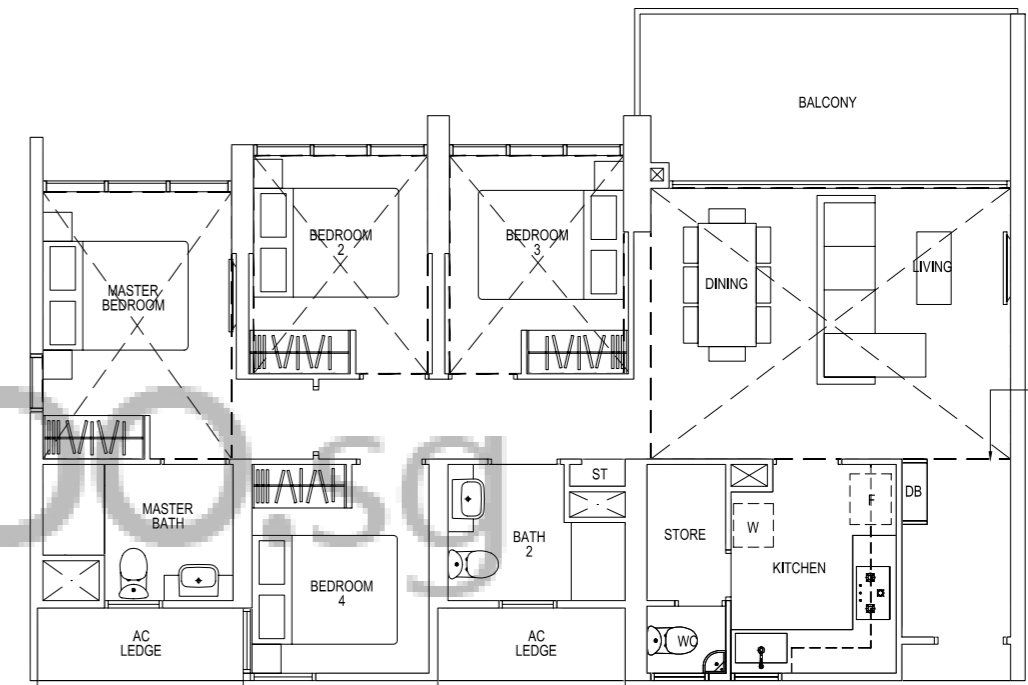


# ≈ 4 BEDROOMS ≈

## Type D1-R

156 sq m | 1679 sq ft  
Incl. of 49 sq m / 526 sq ft of  
void area (high ceiling) above  
living, dining & bedrooms

#36-01,  
#36-12

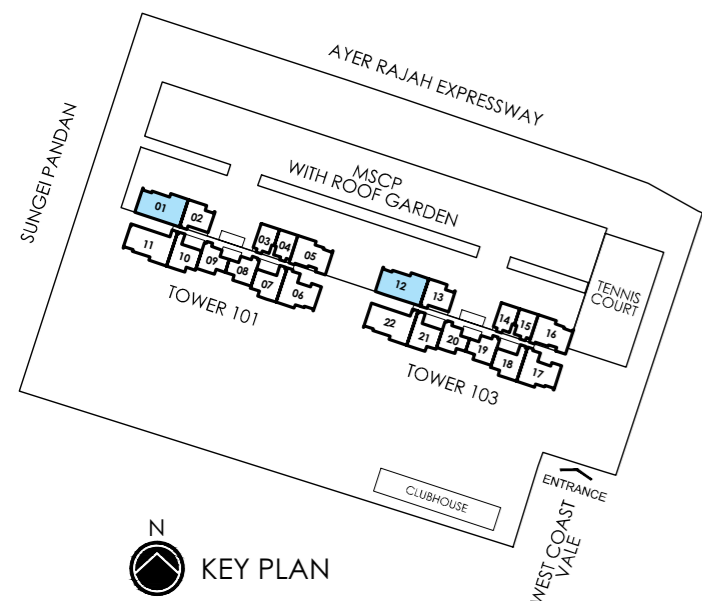
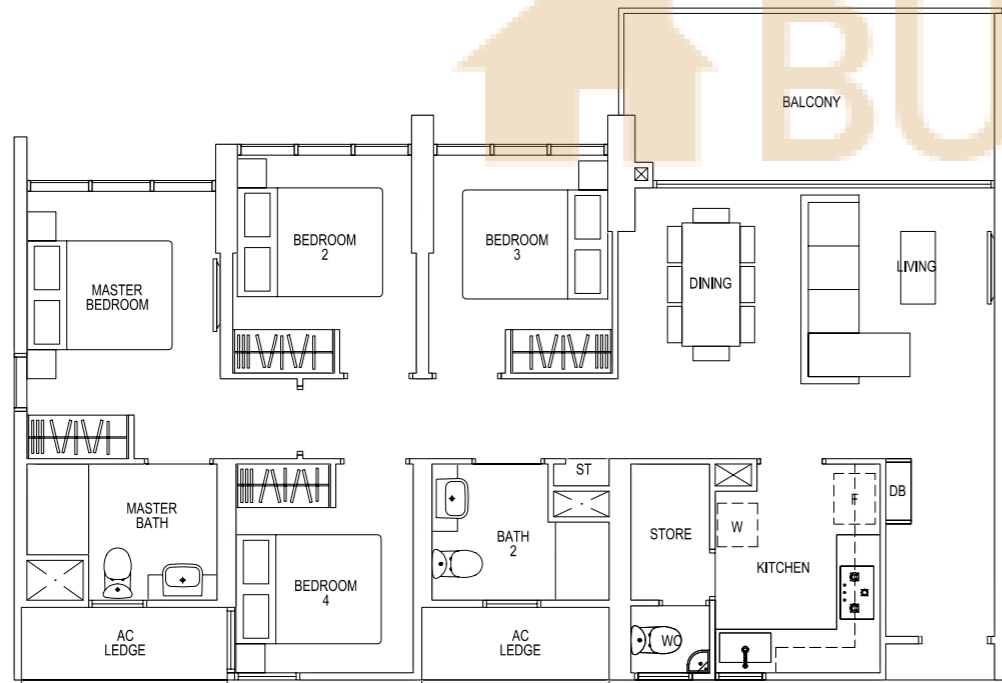


dotted line denotes high  
ceiling above living,  
dining & bedrooms

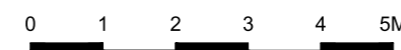
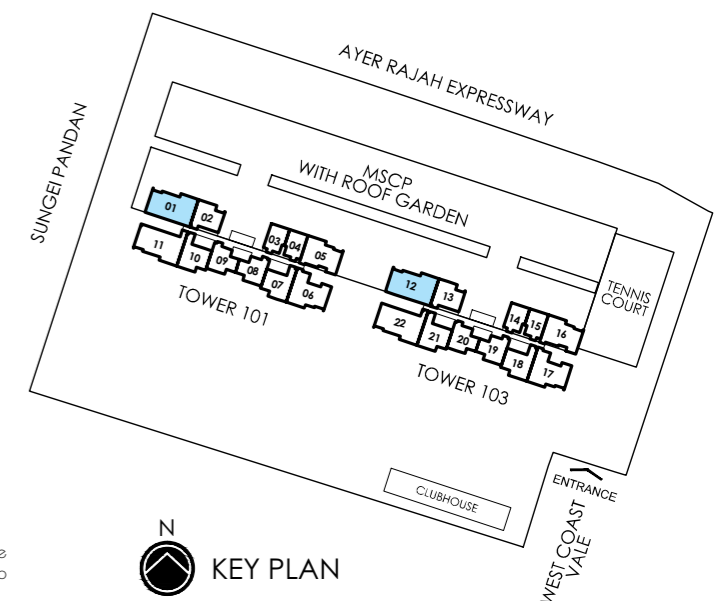
## Type D1

107 sq m | 1152 sq ft

#06-01 TO #35-01,  
#06-12 TO #35-12



Area includes pes, prt, a/c ledge, balcony and void area. The plans are subject to change as may be required or approved by the relevant authorities. Areas are approximate measurements only and are subject to final survey. Plans are not drawn to scale and do not form part of the contract.



Area includes pes, prt, a/c ledge, balcony and void area. The plans are subject to change as may be required or approved by the relevant authorities. Areas are approximate measurements only and are subject to final survey. Plans are not drawn to scale and do not form part of the contract.

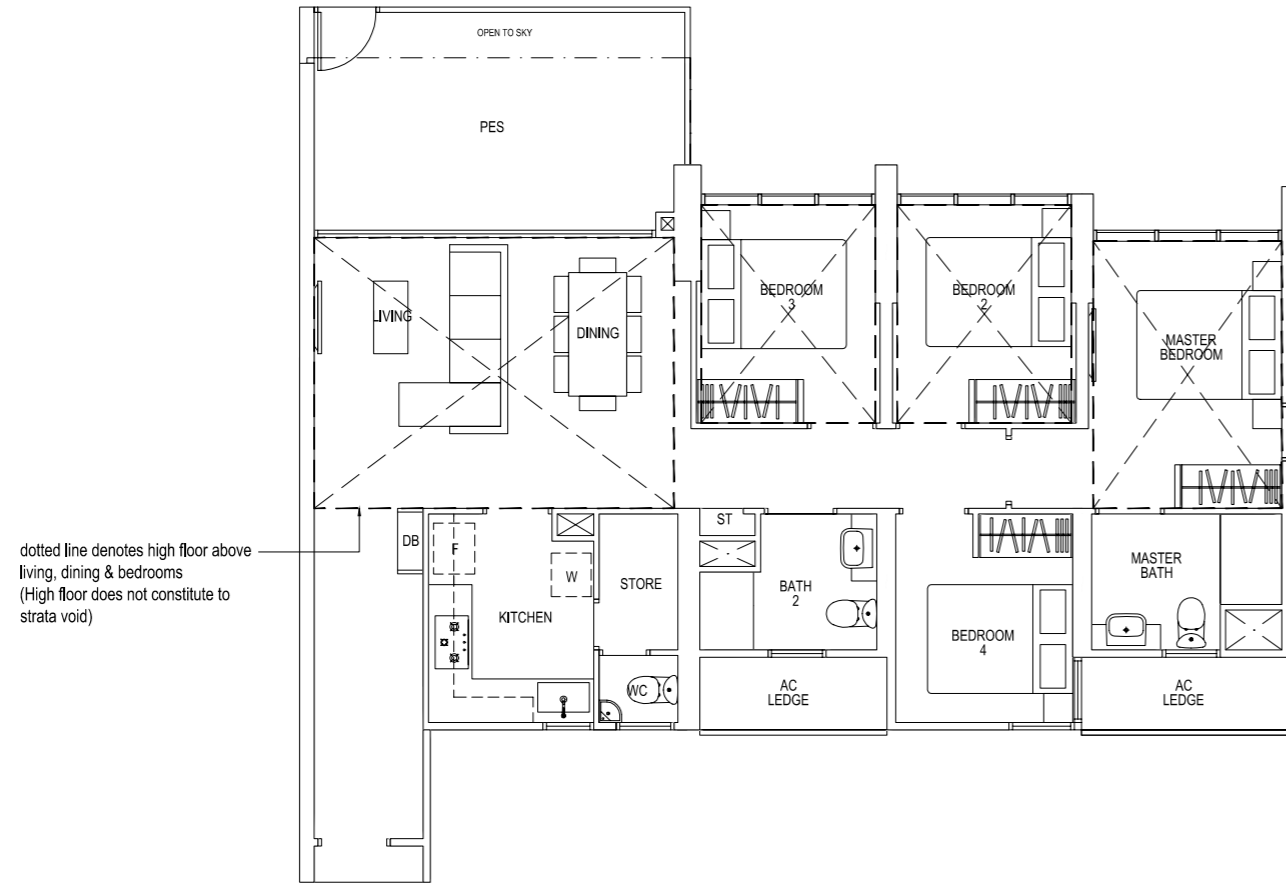
KEY PLAN

# ≈ 4 BEDROOMS ≈

## Type D2-P

114 sq m | 1227 sq ft

#01-11,  
#01-22



dotted line denotes high floor above living, dining & bedrooms (High floor does not constitute to strata void)

## Type D2

110 sq m | 1184 sq ft

#02-11 TO #35-11,  
#02-22 TO #35-22

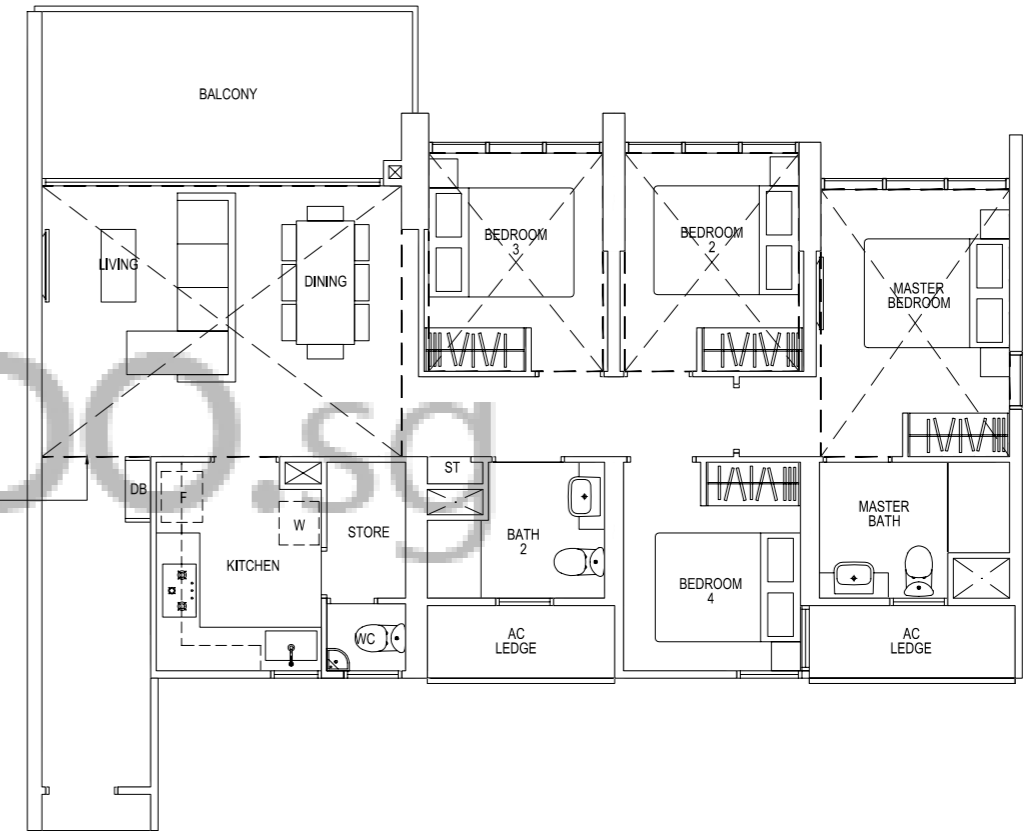


# ≈ 4 BEDROOMS ≈

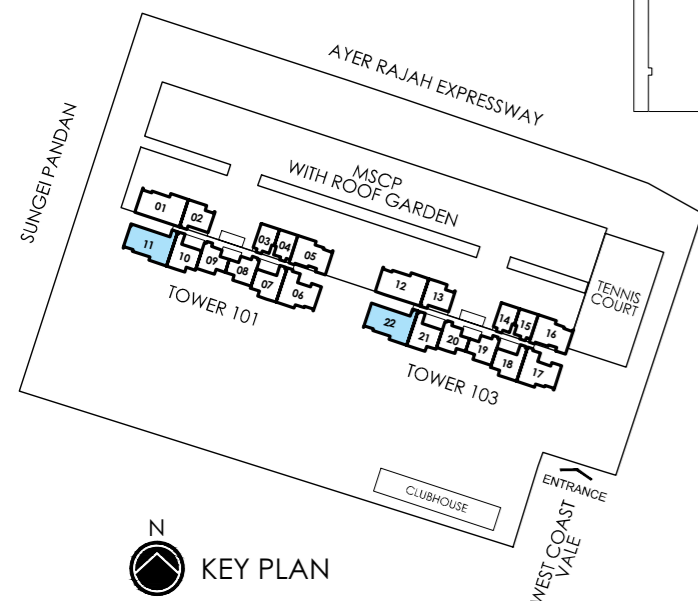
## Type D2-R

159 sq m | 1711 sq ft  
Incl. of 49 sq m / 526 sq ft of void area (high ceiling) above living, dining & bedrooms

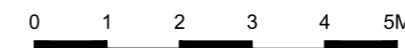
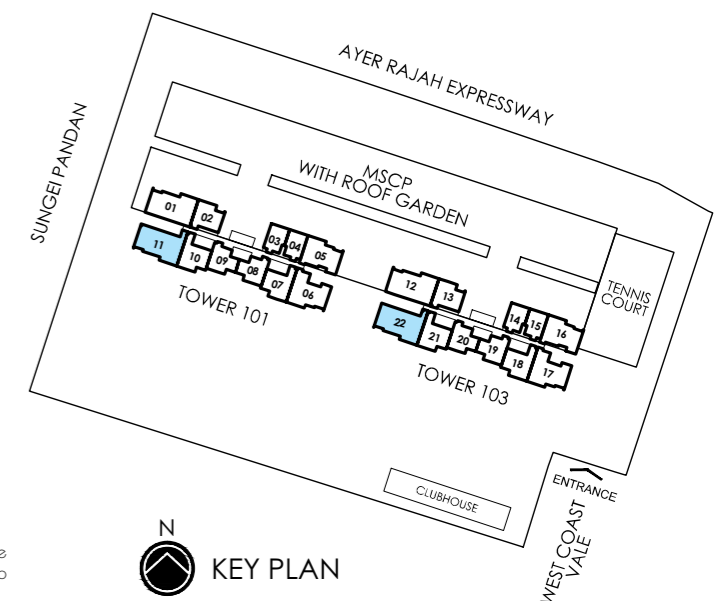
#36-11,  
#36-22



dotted line denotes high ceiling above living, dining & bedrooms



Area includes pes, prt, a/c ledge, balcony and void area. The plans are subject to change as may be required or approved by the relevant authorities. Areas are approximate measurements only and are subject to final survey. Plans are not drawn to scale and do not form part of the contract



Area includes pes, prt, a/c ledge, balcony and void area. The plans are subject to change as may be required or approved by the relevant authorities. Areas are approximate measurements only and are subject to final survey. Plans are not drawn to scale and do not form part of the contract

