

1-BEDROOM

UNIT TYPES

1BR 1
40 sqm / 431 sq ft

1BR1-P
40 sqm / 431 sq ft

1BR 2-P
39 sqm / 420 sq ft

1BR 3-P
40 sqm / 431 sq ft

1BR 4-P
40 sqm / 431 sq ft

1BR S1
47 sqm / 506 sq ft

1BR S1-P
47 sqm / 506 sq ft

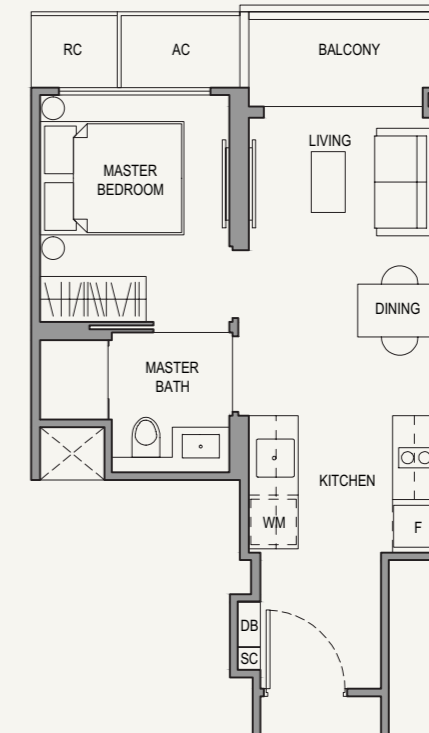
1BR S2
47 sqm / 506 sq ft

1BR S2-P
47 sqm / 506 sq ft

1-BEDROOM

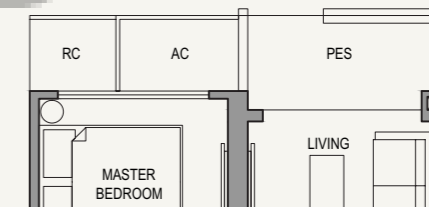
Type 1BR 1
40 sqm / 431 sq ft

#02-08 to 22-08
#02-17 to 22-17
#03-34 to 22-34



Type 1BR1-P
40 sqm / 431 sq ft

#02-34

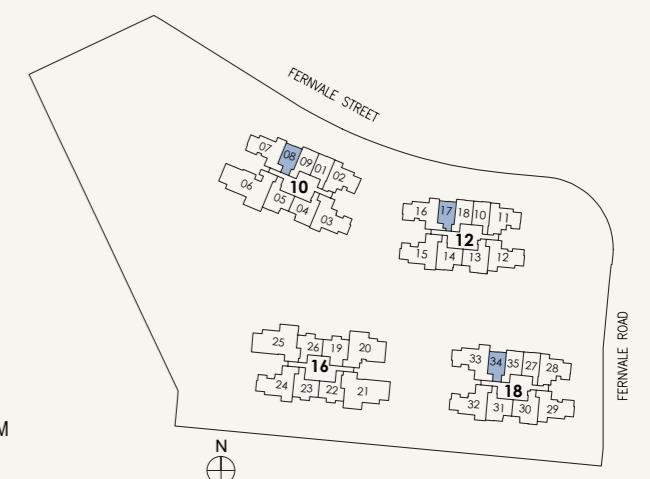


LEGEND:

- Wall not allowed to be hacked or altered (including by way of drilling) (Refer to the clause pertaining to PPVC in the S&P Documents)
- Services void space (excluded from strata area)
- Rainwater downpipe shaft space (excluded from strata area)

Area include A/C ledge, balcony, PES and void (where applicable). Some units are mirror images of the apartment plans shown in the brochure. Please refer to the key plans for orientation. The plans are correct at the time of printing and are subject to such amendments as may be required or approved by the relevant authorities. The plans are not drawn to scale and are for the purpose of visual representation of the different available layouts. All floor areas are estimates only and are subject to final survey.

0 15 2 3 M
SCALE 1 : 100



1-BEDROOM

1-BEDROOM

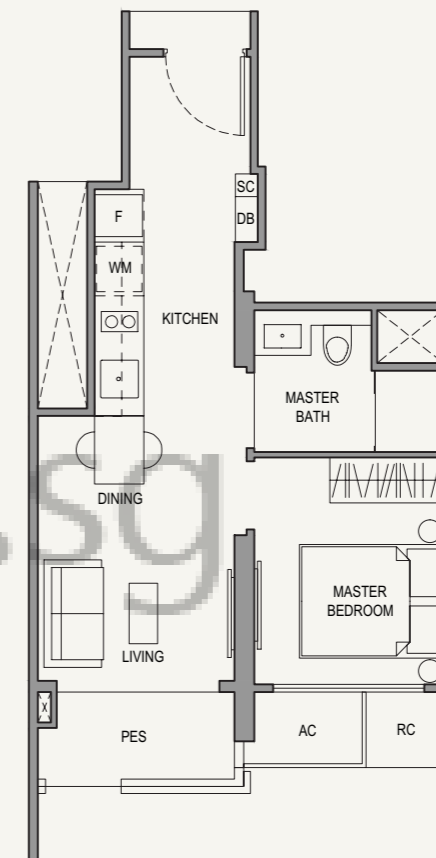
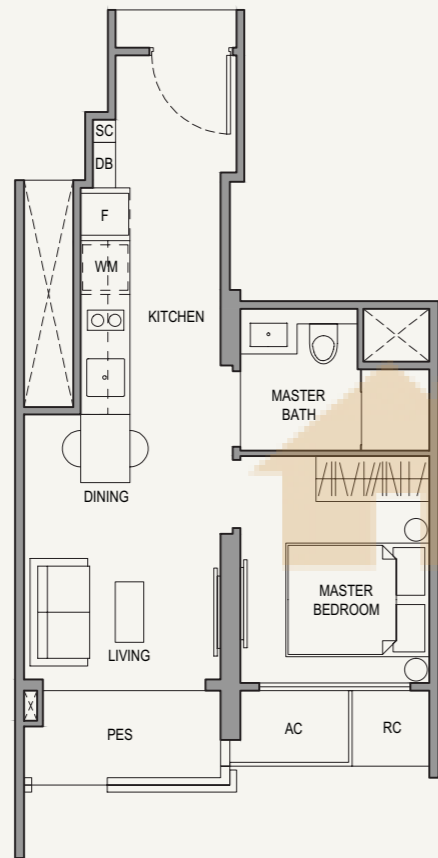
Type 1BR 2-P
39 sqm / 420 sq ft

Type 1BR 3-P
40 sqm / 431 sq ft

#02-05

#02-14

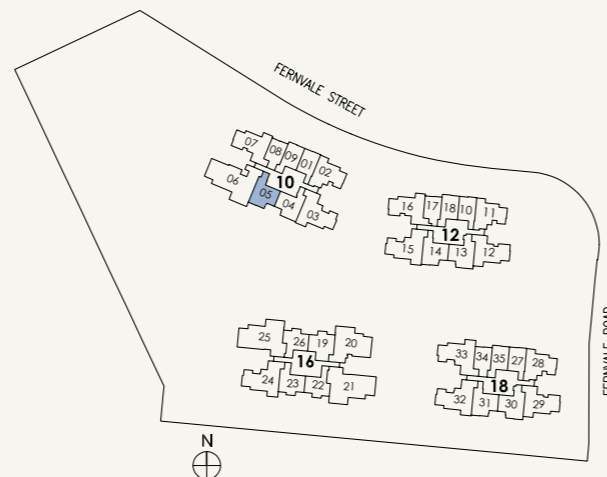
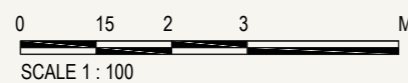
#02-31



LEGEND:

- Wall not allowed to be hacked or altered (including by way of drilling) (Refer to the clause pertaining to PPVC in the S&P Documents)
- Services void space (excluded from strata area)
- Rainwater downpipe shaft space (excluded from strata area)

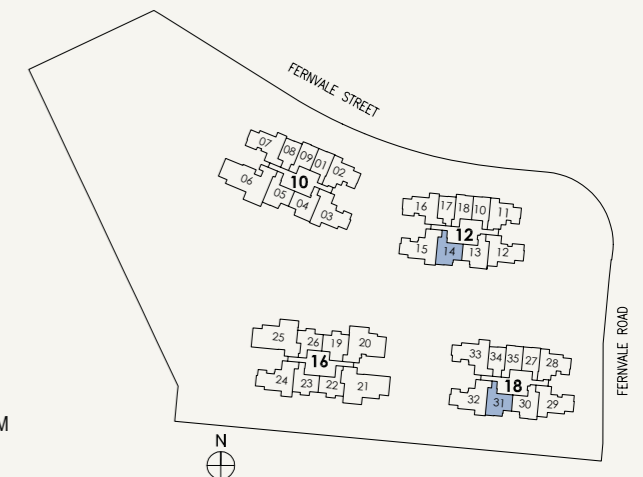
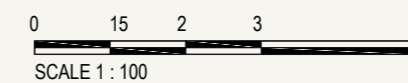
Area include A/C ledge, balcony, PES and void (where applicable). Some units are mirror images of the apartment plans shown in the brochure. Please refer to the key plans for orientation. The plans are correct at the time of printing and are subject to such amendments as may be required or approved by the relevant authorities. The plans are not drawn to scale and are for the purpose of visual representation of the different available layouts. All floor areas are estimates only and are subject to final survey.



LEGEND:

- Wall not allowed to be hacked or altered (including by way of drilling) (Refer to the clause pertaining to PPVC in the S&P Documents)
- Services void space (excluded from strata area)
- Rainwater downpipe shaft space (excluded from strata area)

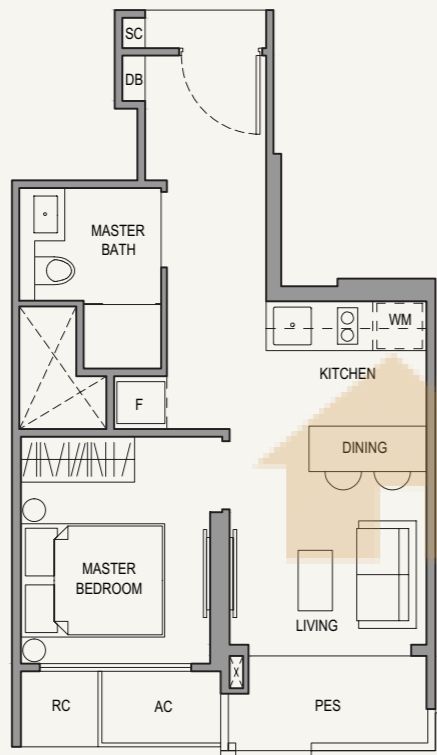
Area include A/C ledge, balcony, PES and void (where applicable). Some units are mirror images of the apartment plans shown in the brochure. Please refer to the key plans for orientation. The plans are correct at the time of printing and are subject to such amendments as may be required or approved by the relevant authorities. The plans are not drawn to scale and are for the purpose of visual representation of the different available layouts. All floor areas are estimates only and are subject to final survey.



1-BEDROOM

Type 1BR 4-P
40 sqm / 431 sq ft

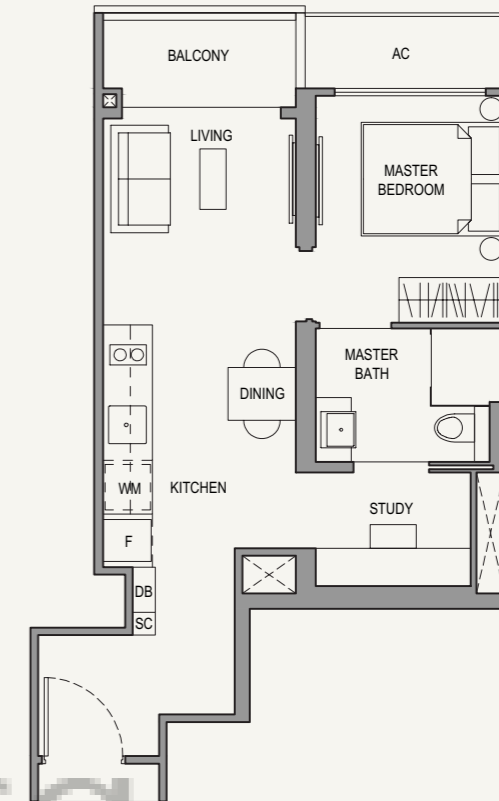
#02-23



1-BEDROOM

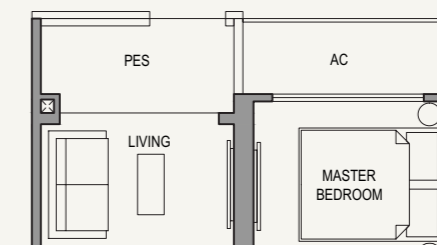
Type 1BR S1
47 sqm / 506 sq ft

#02-09 to 22-09
#02-18 to 22-18
#03-35 to 22-35



Type 1BR S1-P
47 sqm / 506 sq ft

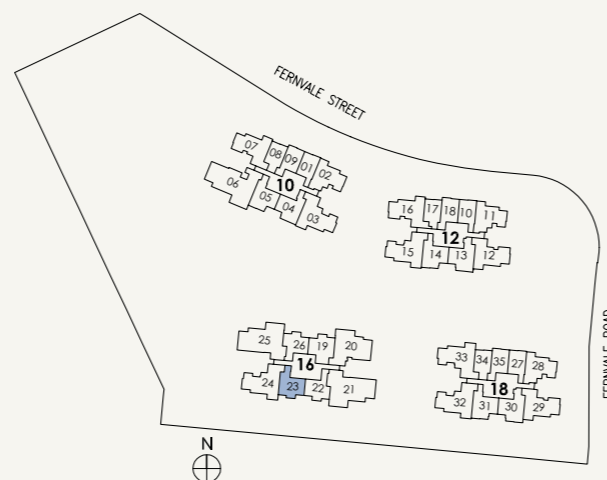
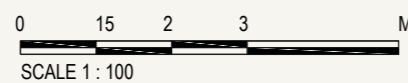
#02-35



LEGEND:

- Wall not allowed to be hacked or altered (including by way of drilling) (Refer to the clause pertaining to PPVC in the S&P Documents)
- Services void space (excluded from strata area)
- Rainwater downpipe shaft space (excluded from strata area)

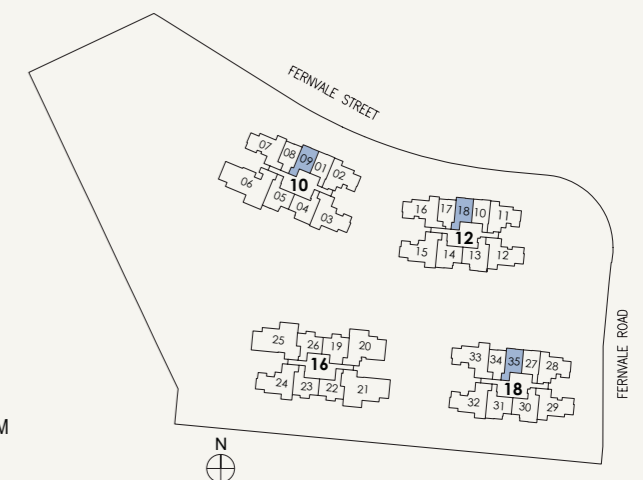
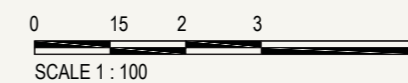
Area include A/C ledge, balcony, PES and void (where applicable). Some units are mirror images of the apartment plans shown in the brochure. Please refer to the key plans for orientation. The plans are correct at the time of printing and are subject to such amendments as may be required or approved by the relevant authorities. The plans are not drawn to scale and are for the purpose of visual representation of the different available layouts. All floor areas are estimates only and are subject to final survey.



LEGEND:

- Wall not allowed to be hacked or altered (including by way of drilling) (Refer to the clause pertaining to PPVC in the S&P Documents)
- Services void space (excluded from strata area)
- Rainwater downpipe shaft space (excluded from strata area)

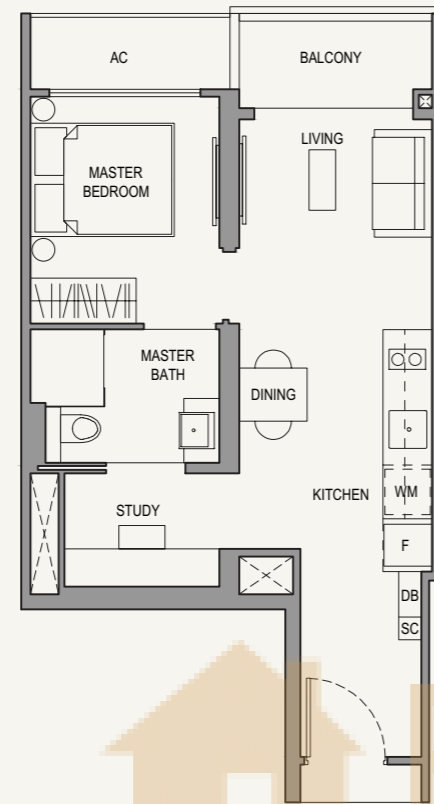
Area include A/C ledge, balcony, PES and void (where applicable). Some units are mirror images of the apartment plans shown in the brochure. Please refer to the key plans for orientation. The plans are correct at the time of printing and are subject to such amendments as may be required or approved by the relevant authorities. The plans are not drawn to scale and are for the purpose of visual representation of the different available layouts. All floor areas are estimates only and are subject to final survey.



1-BEDROOM

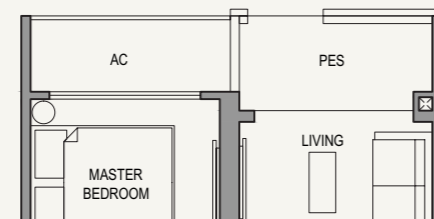
Type 1BR S2
47 sqm / 506 sq ft

#02-01 to 22-01
#02-10 to 22-10
#03-27 to 22-27






Type 1BR S2-P
47 sqm / 506 sq ft

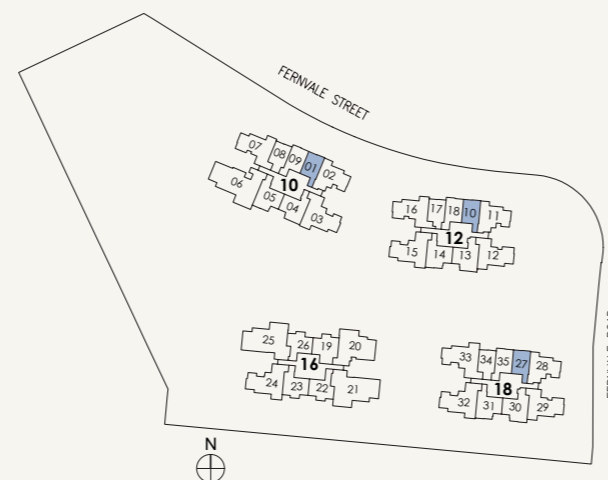
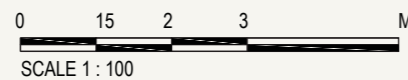
#02-27



LEGEND:

-  Wall not allowed to be hacked or altered (including by way of drilling) (Refer to the clause pertaining to PPVC in the S&P Documents)
-  Services void space (excluded from strata area)
-  Rainwater downpipe shaft space (excluded from strata area)

Area include A/C ledge, balcony, PES and void (where applicable). Some units are mirror images of the apartment plans shown in the brochure. Please refer to the key plans for orientation. The plans are correct at the time of printing and are subject to such amendments as may be required or approved by the relevant authorities. The plans are not drawn to scale and are for the purpose of visual representation of the different available layouts. All floor areas are estimates only and are subject to final survey.



2-BEDROOM

UNIT TYPES

2BR C1
55 sqm / 592 sq ft

2BR C1-P
55 sqm / 592 sq ft

2BR C1-H
65 sqm / 700 sq ft

2BR C2
54 sqm / 581 sq ft

2BR C2-P
54 sqm / 581 sq ft

2BR C2-H
65 sqm / 700 sq ft

2BR P1-P
62 sqm / 667 sq ft

2BR P1
62 sqm / 667 sq ft

2BR P1-H
73 sqm / 786 sq ft

2BR P2
62 sqm / 667 sq ft

2BR P2-H
73 sqm / 786 sq ft

2BR Sa
72 sqm / 775 sq ft

2BR S-P
72 sqm / 775 sq ft

2BR Sb
73 sqm / 786 sq ft

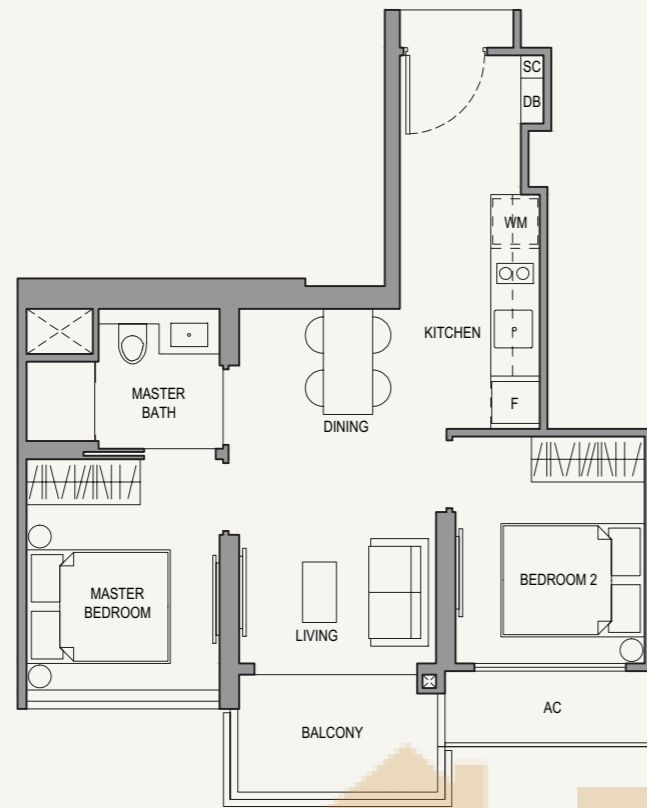
2BR S-H1
87 sqm / 936 sq ft

2BR S-H2
86 sqm / 926 sq ft

2-BEDROOM

Type 2BR C1
55 sqm / 592 sq ft

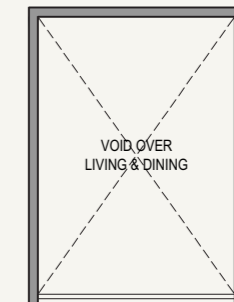
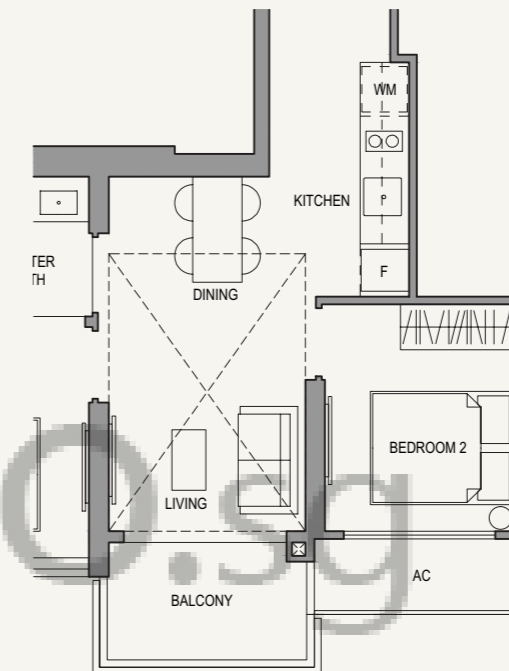
#03-22 to 21-22
#03-23 to 21-23*



2-BEDROOM

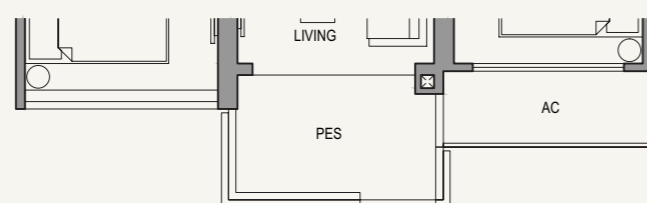
Type 2BR C1-H
65 sqm / 700 sq ft

#22-22
#22-23*



Type 2BR C1-P
55 sqm / 592 sq ft

#02-22



LOWER

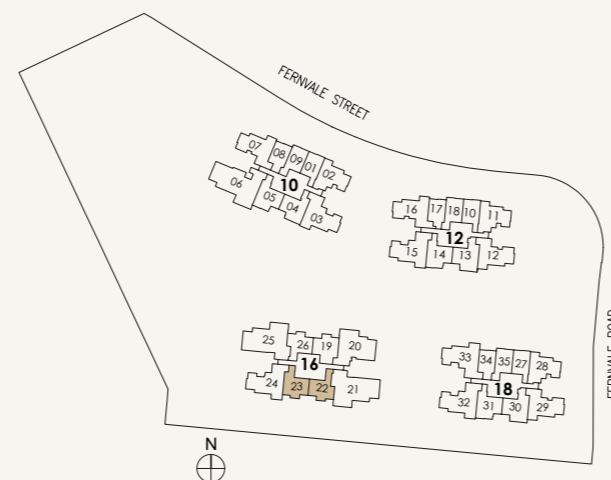
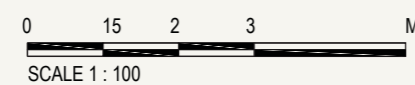
UPPER

LEGEND:

- Wall not allowed to be hacked or altered (including by way of drilling) (Refer to the clause pertaining to PPVC in the S&P Documents)
- Services void space (excluded from strata area)
- Rainwater downpipe shaft space (excluded from strata area)

*MIRROR IMAGE

Area include A/C ledge, balcony, PES and void (where applicable). Some units are mirror images of the apartment plans shown in the brochure. Please refer to the key plans for orientation. The plans are correct at the time of printing and are subject to such amendments as may be required or approved by the relevant authorities. The plans are not drawn to scale and are for the purpose of visual representation of the different available layouts. All floor areas are estimates only and are subject to final survey.

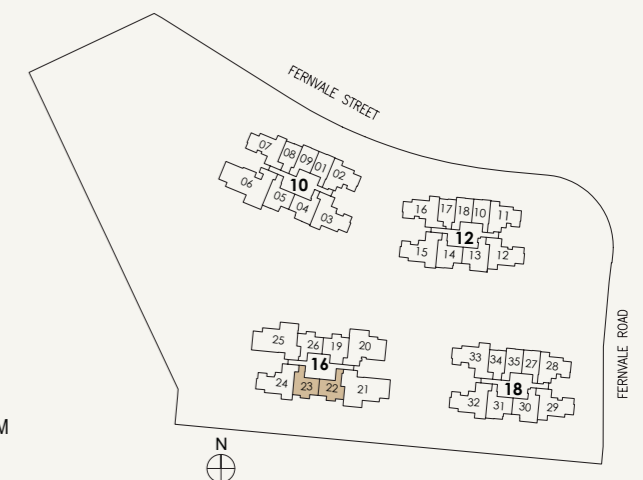
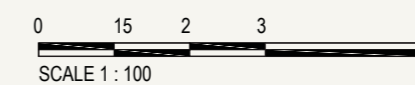


LEGEND:

- Wall not allowed to be hacked or altered (including by way of drilling) (Refer to the clause pertaining to PPVC in the S&P Documents)
- Services void space (excluded from strata area)
- Rainwater downpipe shaft space (excluded from strata area)

*MIRROR IMAGE

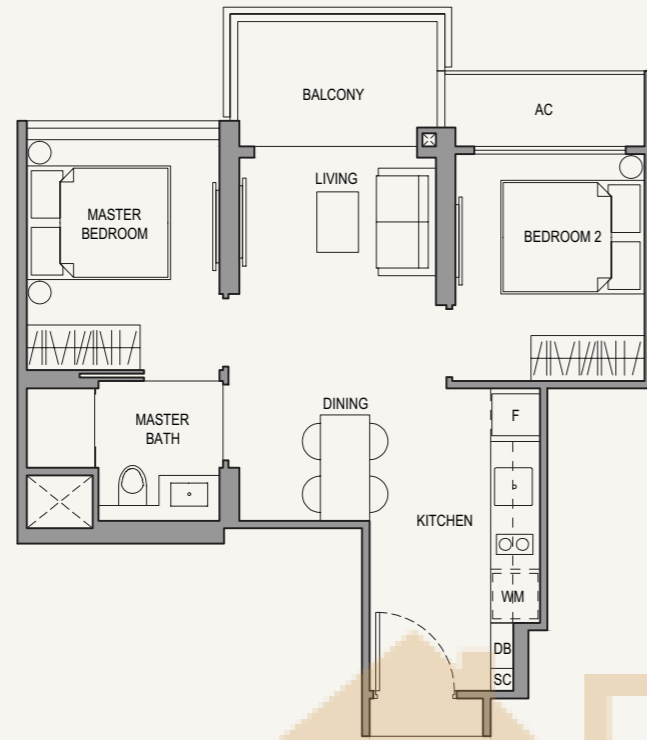
Area include A/C ledge, balcony, PES and void (where applicable). Some units are mirror images of the apartment plans shown in the brochure. Please refer to the key plans for orientation. The plans are correct at the time of printing and are subject to such amendments as may be required or approved by the relevant authorities. The plans are not drawn to scale and are for the purpose of visual representation of the different available layouts. All floor areas are estimates only and are subject to final survey.



2-BEDROOM

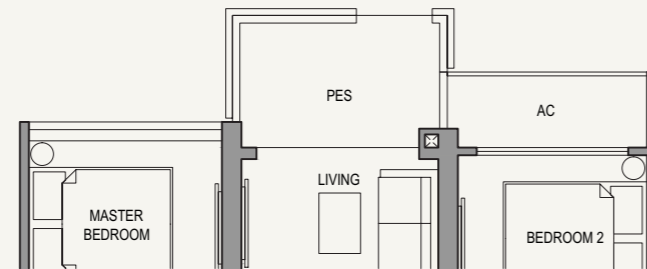
Type 2BR C2
54 sqm / 581 sq ft

#03-19 to 21-19
#03-26 to 21-26*



Type 2BR C2-P
54 sqm / 581 sq ft

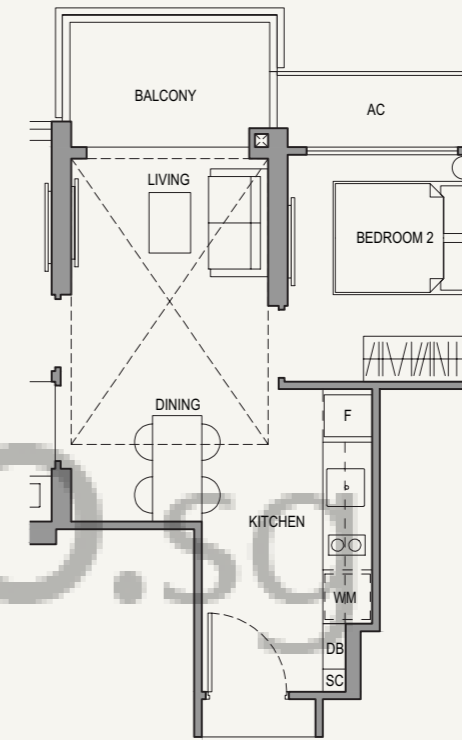
#02-19
#02-26*



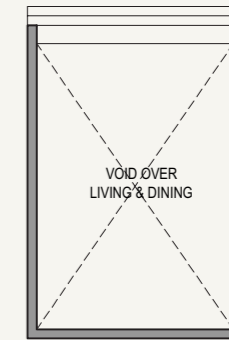
2-BEDROOM

Type 2BR C2-H
65 sqm / 700 sq ft

#22-19
#22-26*



LOWER

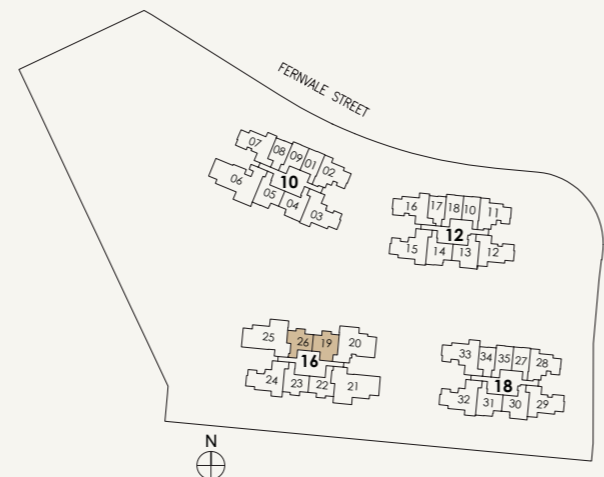
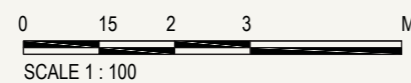


UPPER

LEGEND:

- Wall not allowed to be hacked or altered (including by way of drilling) (Refer to the clause pertaining to PPVC in the S&P Documents)
- Services void space (excluded from strata area)
- Rainwater downpipe shaft space (excluded from strata area)

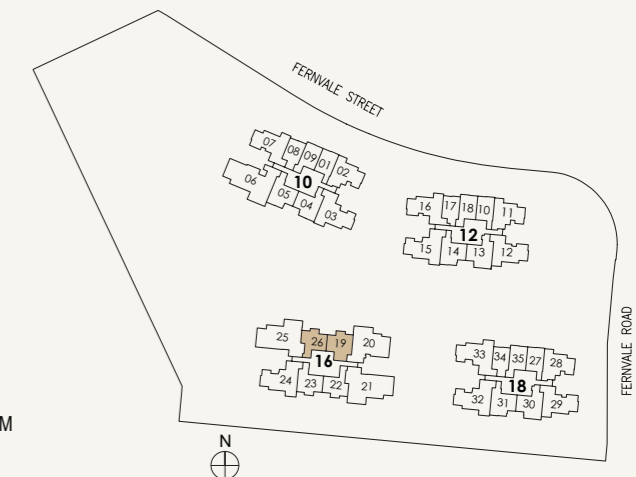
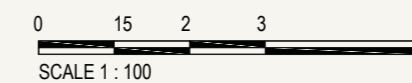
*MIRROR IMAGE
Area include A/C ledge, balcony, PES and void (where applicable). Some units are mirror images of the apartment plans shown in the brochure. Please refer to the key plans for orientation. The plans are correct at the time of printing and are subject to such amendments as may be required or approved by the relevant authorities. The plans are not drawn to scale and are for the purpose of visual representation of the different available layouts. All floor areas are estimates only and are subject to final survey.



LEGEND:

- Wall not allowed to be hacked or altered (including by way of drilling) (Refer to the clause pertaining to PPVC in the S&P Documents)
- Services void space (excluded from strata area)
- Rainwater downpipe shaft space (excluded from strata area)

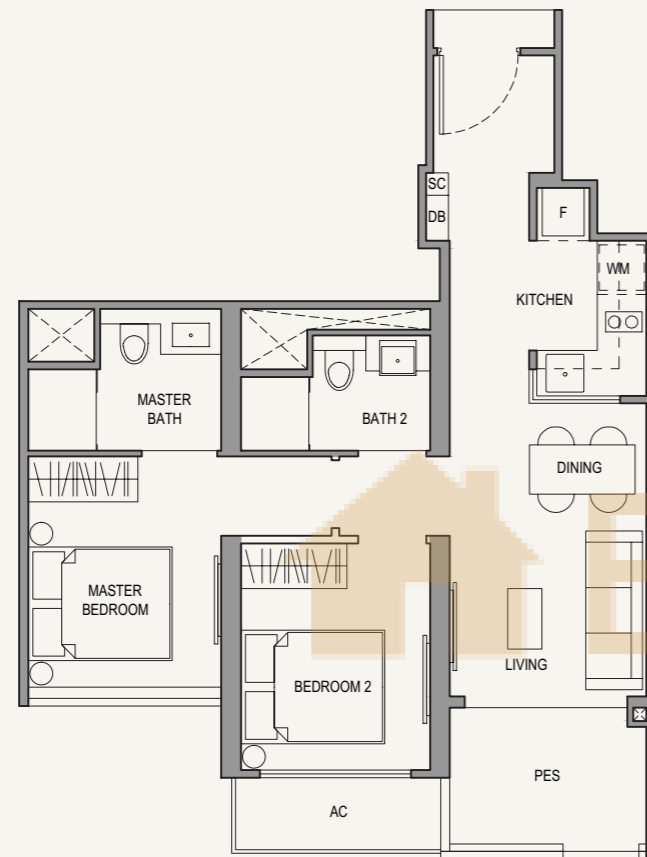
*MIRROR IMAGE
Area include A/C ledge, balcony, PES and void (where applicable). Some units are mirror images of the apartment plans shown in the brochure. Please refer to the key plans for orientation. The plans are correct at the time of printing and are subject to such amendments as may be required or approved by the relevant authorities. The plans are not drawn to scale and are for the purpose of visual representation of the different available layouts. All floor areas are estimates only and are subject to final survey.



2-BEDROOM

Type 2BR P1-P
62 sqm / 667 sq ft

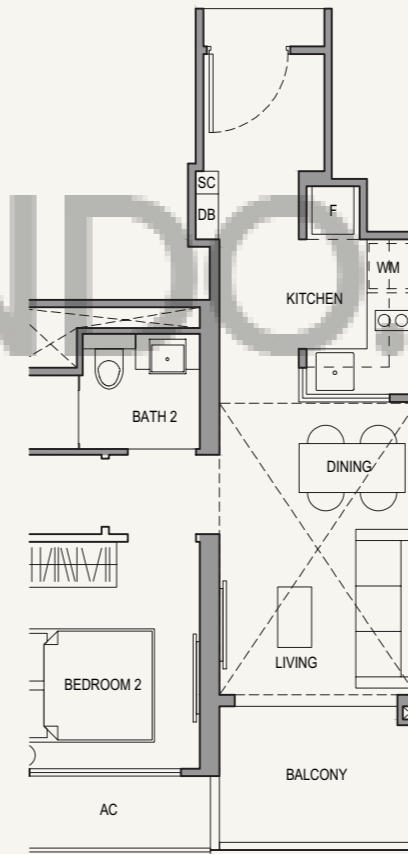
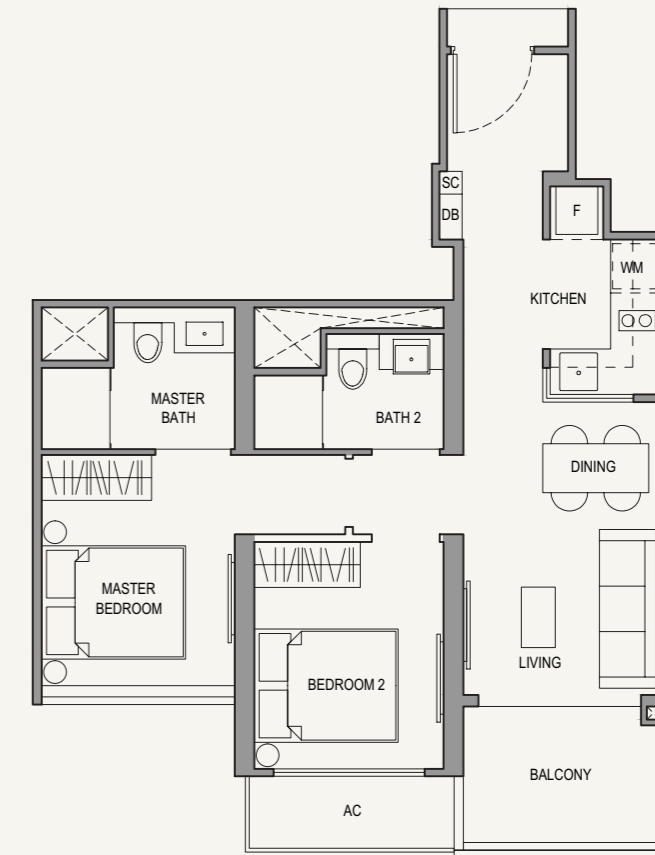
- #02-04
- #02-13
- #02-30



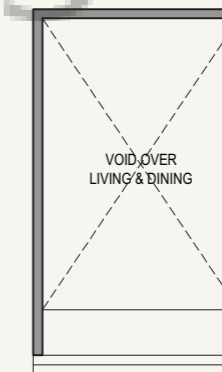
2-BEDROOM

Type 2BR P1
62 sqm / 667 sq ft

- #03-04 to 21-04
- #03-05 to 21-05*
- #03-14 to 21-14*
- #03-31 to 21-31*



LOWER



UPPER

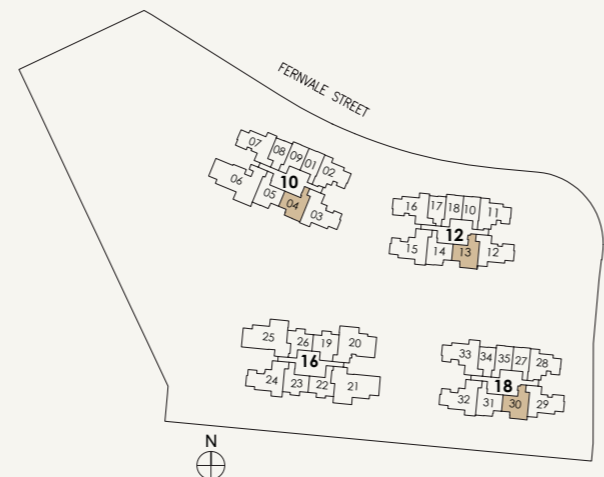
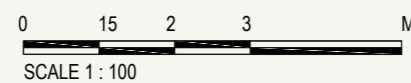
Type 2BR P1-H
73 sqm / 786 sq ft

- #22-04
- #22-05*
- #22-14*
- #22-31*

LEGEND:

- Wall not allowed to be hacked or altered (including by way of drilling) (Refer to the clause pertaining to PPVC in the S&P Documents)
- Services void space (excluded from strata area)
- Rainwater downpipe shaft space (excluded from strata area)

Area include A/C ledge, balcony, PES and void (where applicable). Some units are mirror images of the apartment plans shown in the brochure. Please refer to the key plans for orientation. The plans are correct at the time of printing and are subject to such amendments as may be required or approved by the relevant authorities. The plans are not drawn to scale and are for the purpose of visual representation of the different available layouts. All floor areas are estimates only and are subject to final survey.

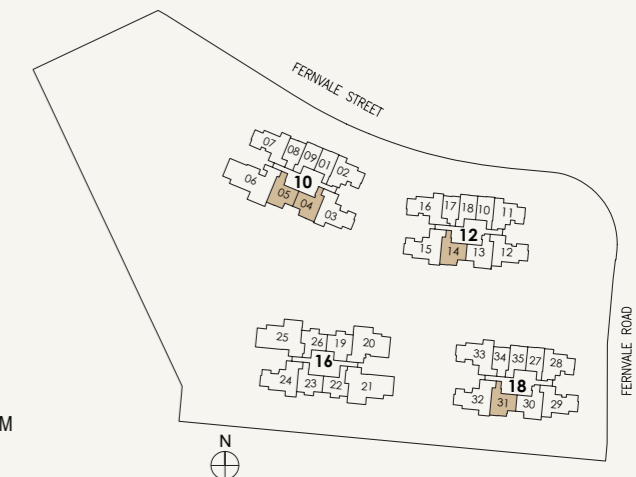
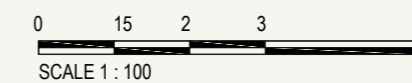


LEGEND:

- Wall not allowed to be hacked or altered (including by way of drilling) (Refer to the clause pertaining to PPVC in the S&P Documents)
- Services void space (excluded from strata area)
- Rainwater downpipe shaft space (excluded from strata area)

***MIRROR IMAGE**

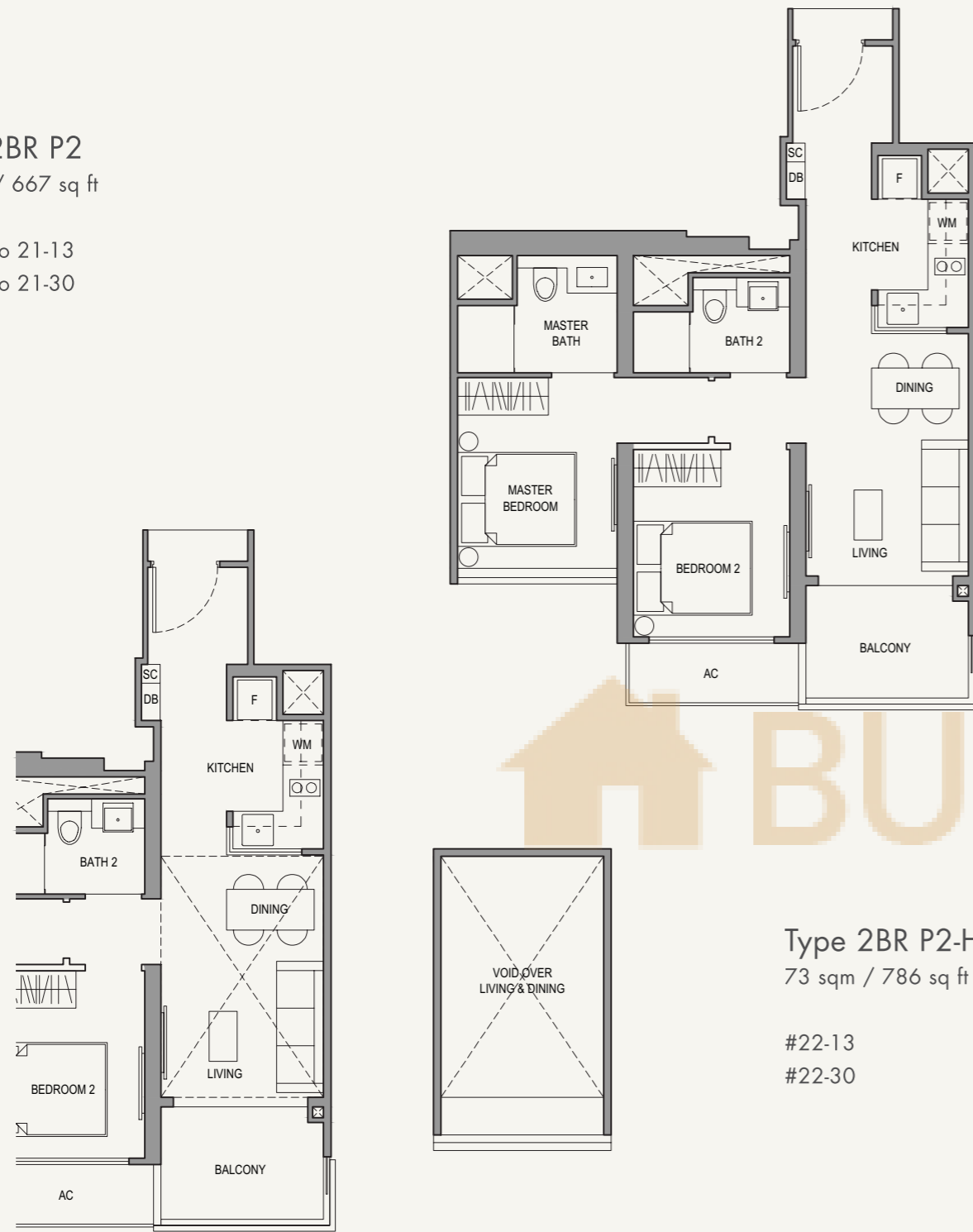
Area include A/C ledge, balcony, PES and void (where applicable). Some units are mirror images of the apartment plans shown in the brochure. Please refer to the key plans for orientation. The plans are correct at the time of printing and are subject to such amendments as may be required or approved by the relevant authorities. The plans are not drawn to scale and are for the purpose of visual representation of the different available layouts. All floor areas are estimates only and are subject to final survey.



2-BEDROOM

Type 2BR P2
62 sqm / 667 sq ft

#03-13 to 21-13
#03-30 to 21-30

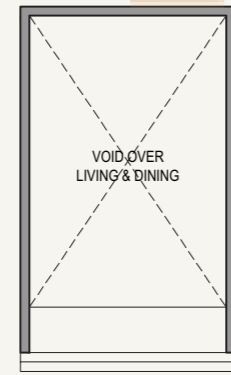


LOWER

UPPER

Type 2BR P2-H
73 sqm / 786 sq ft

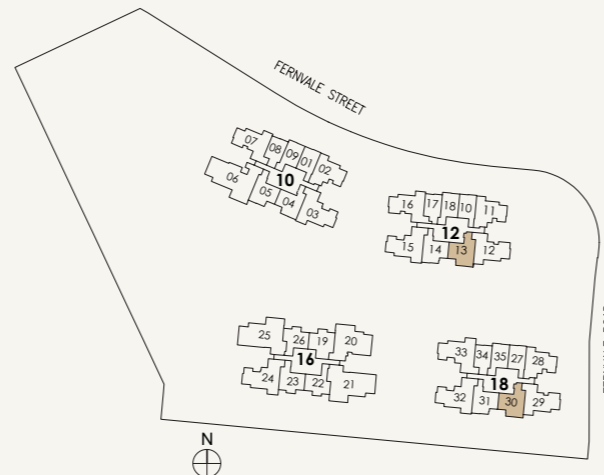
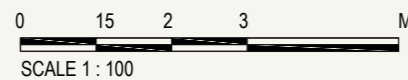
#22-13
#22-30



LEGEND:

- Wall not allowed to be hacked or altered (including by way of drilling) (Refer to the clause pertaining to PPVC in the S&P Documents)
- Services void space (excluded from strata area)
- Rainwater downpipe shaft space (excluded from strata area)

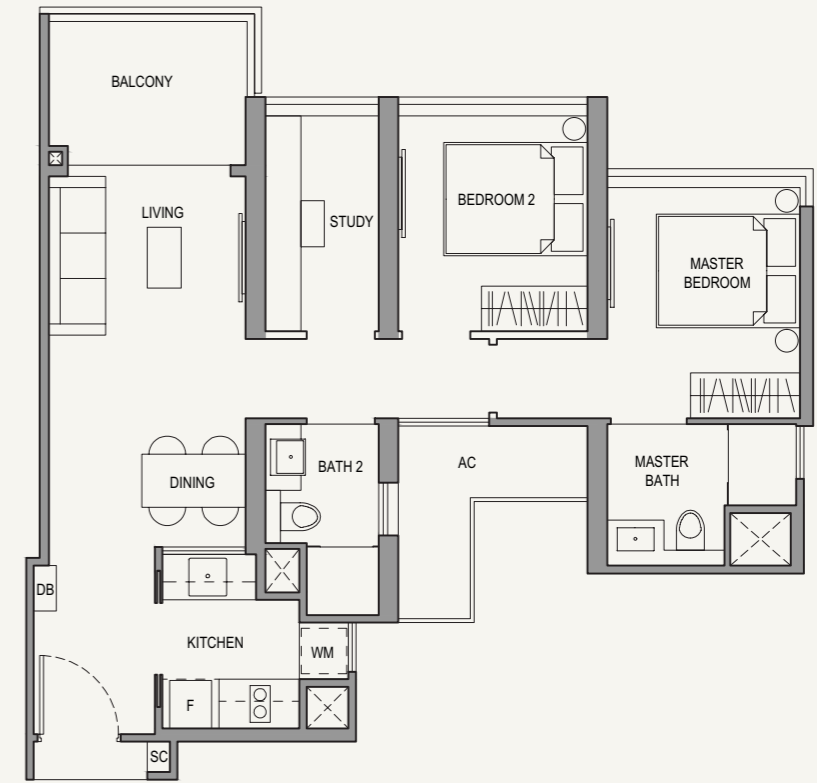
Area include A/C ledge, balcony, PES and void (where applicable). Some units are mirror images of the apartment plans shown in the brochure. Please refer to the key plans for orientation. The plans are correct at the time of printing and are subject to such amendments as may be required or approved by the relevant authorities. The plans are not drawn to scale and are for the purpose of visual representation of the different available layouts. All floor areas are estimates only and are subject to final survey.



2-BEDROOM

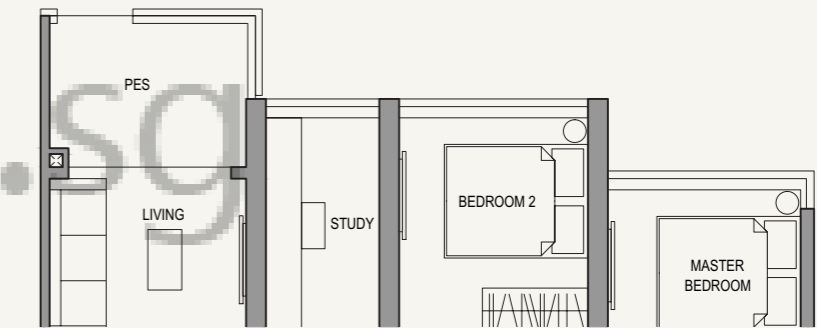
Type 2BR Sa
72 sqm / 775 sq ft

#02-02 to 05-02
#02-11 to 05-11
#03-28 to 05-28



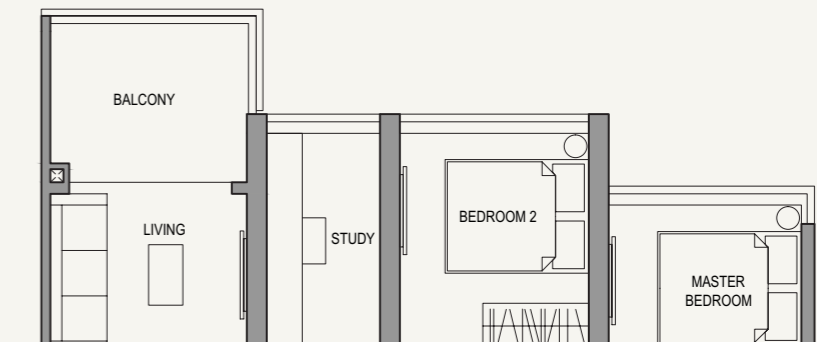
Type 2BR S-P
72 sqm / 775 sq ft

#02-28



Type 2BR Sb
73 sqm / 786 sq ft

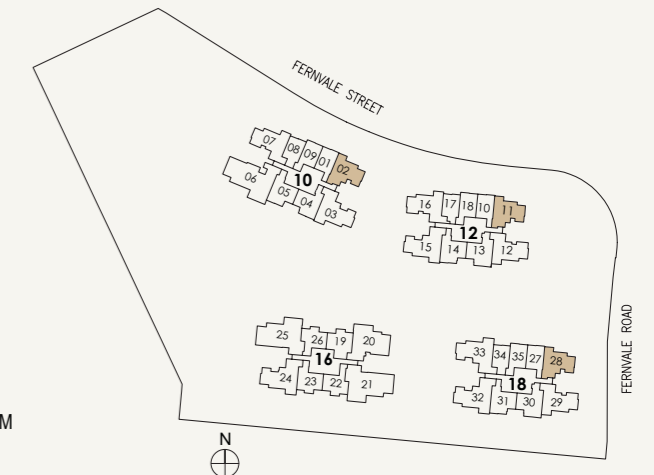
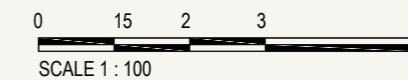
#06-02 to 21-02
#06-11 to 21-11
#06-28 to 21-28



LEGEND:

- Wall not allowed to be hacked or altered (including by way of drilling) (Refer to the clause pertaining to PPVC in the S&P Documents)
- Services void space (excluded from strata area)
- Rainwater downpipe shaft space (excluded from strata area)

Area include A/C ledge, balcony, PES and void (where applicable). Some units are mirror images of the apartment plans shown in the brochure. Please refer to the key plans for orientation. The plans are correct at the time of printing and are subject to such amendments as may be required or approved by the relevant authorities. The plans are not drawn to scale and are for the purpose of visual representation of the different available layouts. All floor areas are estimates only and are subject to final survey.

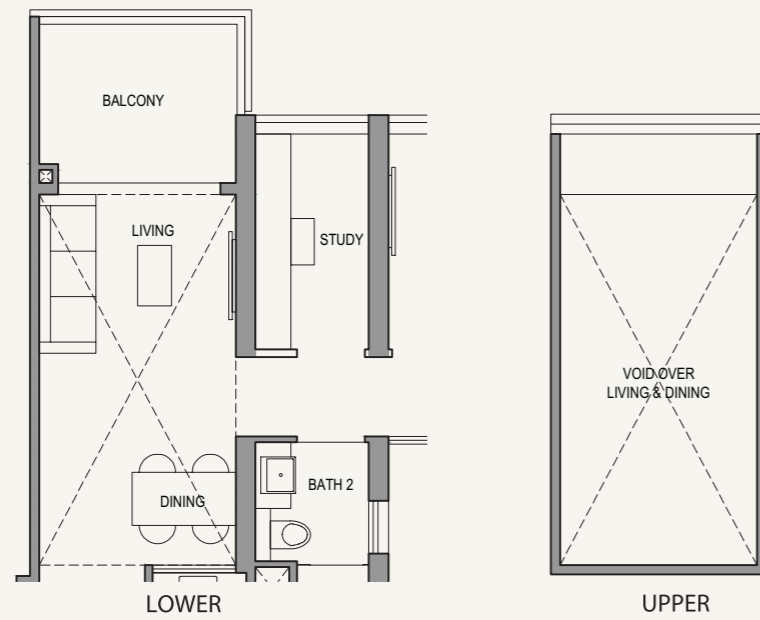


2-BEDROOM

Type 2BR S-H1

87 sqm / 936 sq ft

#22-02

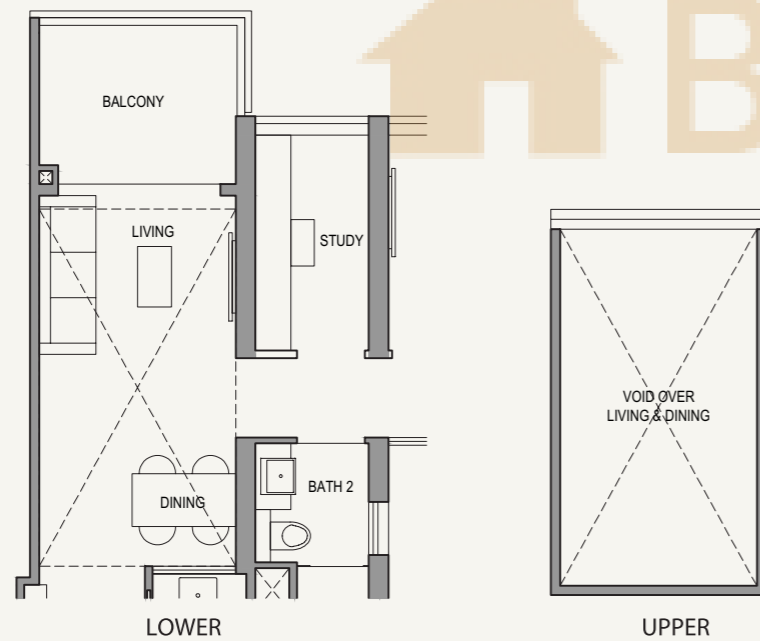


Type 2BR S-H2

86 sqm / 926 sq ft

#22-11

#22-28



LEGEND:

- Wall not allowed to be hacked or altered (including by way of drilling) (Refer to the clause pertaining to PPVC in the S&P Documents)
- Services void space (excluded from strata area)
- Rainwater downpipe shaft space (excluded from strata area)

Area include A/C ledge, balcony, PES and void (where applicable). Some units are mirror images of the apartment plans shown in the brochure. Please refer to the key plans for orientation. The plans are correct at the time of printing and are subject to such amendments as may be required or approved by the relevant authorities. The plans are not drawn to scale and are for the purpose of visual representation of the different available layouts. All floor areas are estimates only and are subject to final survey.

0 15 2 3 M
SCALE 1 : 100



3-BEDROOM

UNIT TYPES

3BR C1a
80 sqm / 861 sq ft

3BR C1b
81 sqm / 872 sq ft

3BR C1-H1
95 sqm / 1023 sq ft

3BR C1-H2
96 sqm / 1033 sq ft

3BR C2a
80 sqm / 861 sq ft

3BR C2-P
80 sqm / 861 sq ft

3BR C2b
81 sqm / 872 sq ft

3BR C2-H
95 sqm / 1023 sq ft

3BR P1a
90 sqm / 969 sq ft

3BR P1-P
96 sqm / 1033 sq ft

3BR P1b
91 sqm / 980 sq ft

3BR P1-H
108 sqm / 1163 sq ft

3BR P2a
89 sqm / 958 sq ft

3BR P2-P
97 sqm / 1044 sq ft

3BR P2b
90 sqm / 969 sq ft

BR P2-H
105 sqm / 1130 sq ft

3BR P3a
90 sqm / 969 sq ft

3BR P3-P
98 sqm / 1055 sq ft

3BR P3b
91 sqm / 980 sq ft

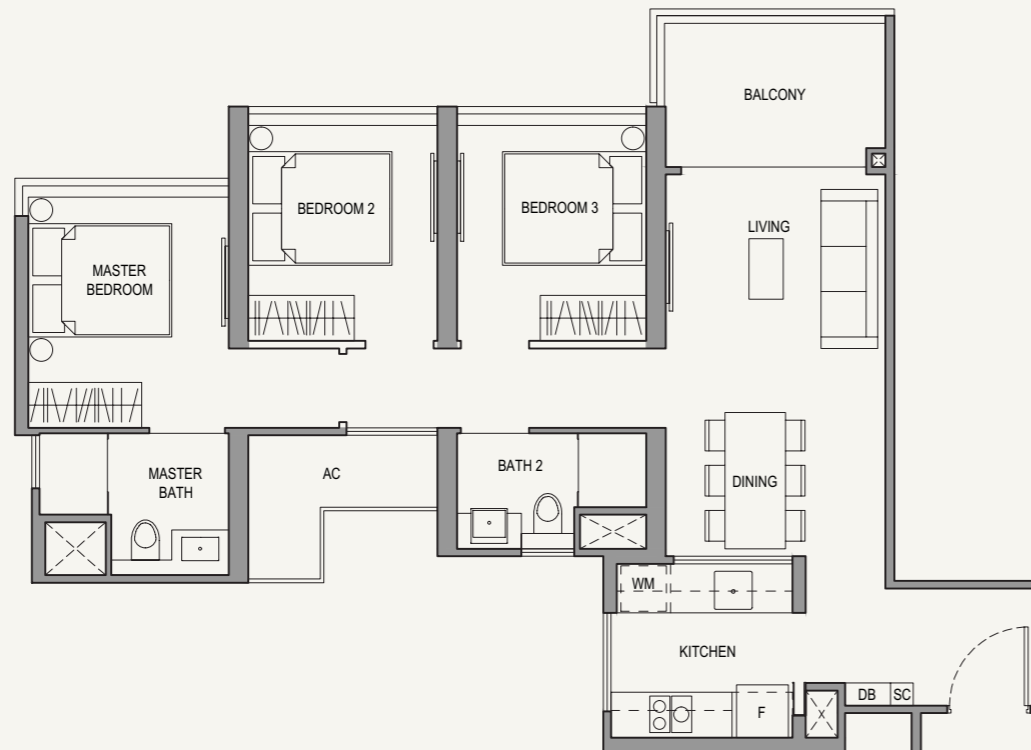
3BR P3-H
108 sqm / 1163 sq ft



3-BEDROOM

Type 3BR C1a
80 sqm / 861 sq ft

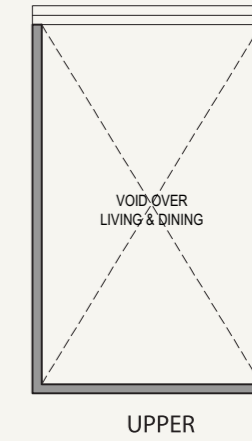
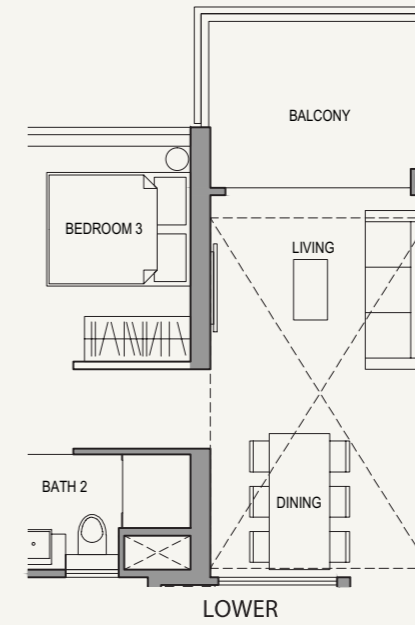
#02-07 to 05-07
#02-16 to 05-16



3-BEDROOM

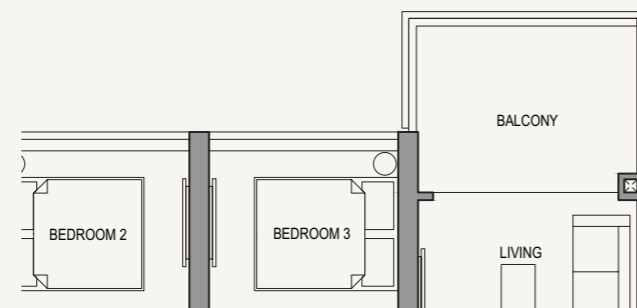
Type 3BR C1-H1
95 sqm / 1023 sq ft

#22-07



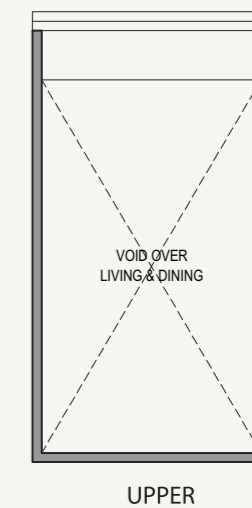
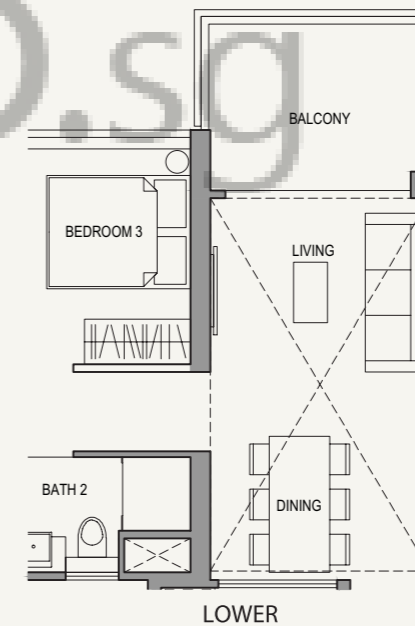
Type 3BR C1b
81 sqm / 872 sq ft

#06-07 to 21-07
#06-16 to 21-16



Type 3BR C1-H2
96 sqm / 1033 sq ft

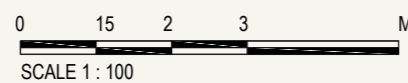
#22-16



LEGEND:

- Wall not allowed to be hacked or altered (including by way of drilling) (Refer to the clause pertaining to PPVC in the S&P Documents)
- Services void space (excluded from strata area)
- Rainwater downpipe shaft space (excluded from strata area)

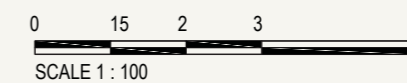
Area include A/C ledge, balcony, PES and void (where applicable). Some units are mirror images of the apartment plans shown in the brochure. Please refer to the key plans for orientation. The plans are correct at the time of printing and are subject to such amendments as may be required or approved by the relevant authorities. The plans are not drawn to scale and are for the purpose of visual representation of the different available layouts. All floor areas are estimates only and are subject to final survey.



LEGEND:

- Wall not allowed to be hacked or altered (including by way of drilling) (Refer to the clause pertaining to PPVC in the S&P Documents)
- Services void space (excluded from strata area)
- Rainwater downpipe shaft space (excluded from strata area)

Area include A/C ledge, balcony, PES and void (where applicable). Some units are mirror images of the apartment plans shown in the brochure. Please refer to the key plans for orientation. The plans are correct at the time of printing and are subject to such amendments as may be required or approved by the relevant authorities. The plans are not drawn to scale and are for the purpose of visual representation of the different available layouts. All floor areas are estimates only and are subject to final survey.



3-BEDROOM

Type 3BR C2a
80 sqm / 861 sq ft

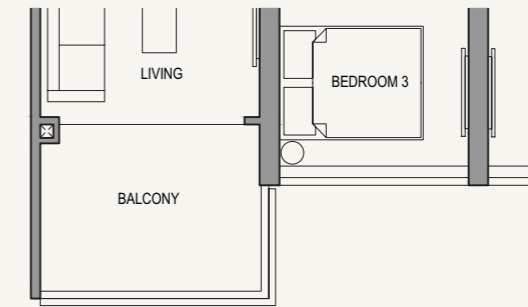
#03-12 to 05-12
#03-29 to 05-29



3-BEDROOM

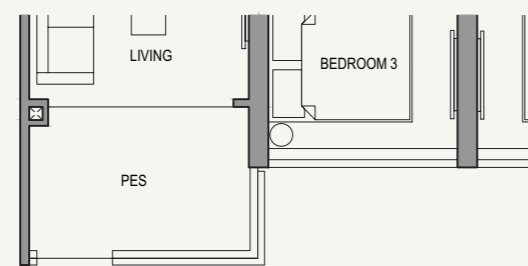
Type 3BR C2b
81 sqm / 872 sq ft

#06-12 to 21-12
#06-29 to 21-29



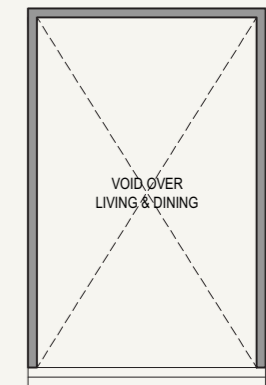
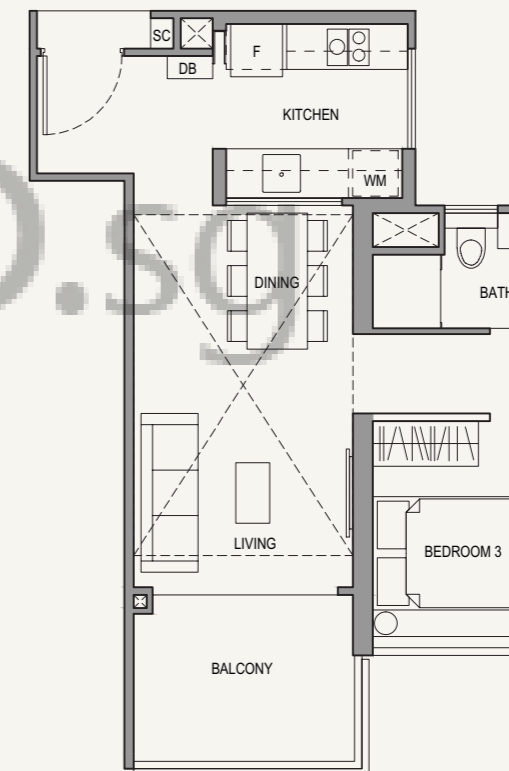
Type 3BR C2-P
80 sqm / 861 sq ft

#02-12
#02-29



Type 3BR C2-H
95 sqm / 1023 sq ft

#22-12
#22-29



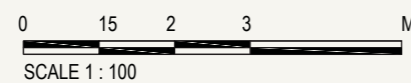
LOWER

UPPER

LEGEND:

- Wall not allowed to be hacked or altered (including by way of drilling) (Refer to the clause pertaining to PPVC in the S&P Documents)
- Services void space (excluded from strata area)
- Rainwater downpipe shaft space (excluded from strata area)

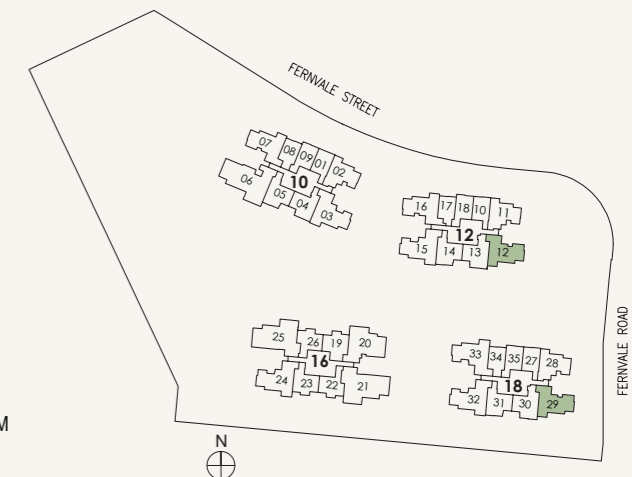
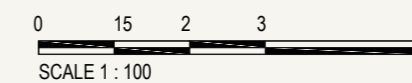
Area include A/C ledge, balcony, PES and void (where applicable). Some units are mirror images of the apartment plans shown in the brochure. Please refer to the key plans for orientation. The plans are correct at the time of printing and are subject to such amendments as may be required or approved by the relevant authorities. The plans are not drawn to scale and are for the purpose of visual representation of the different available layouts. All floor areas are estimates only and are subject to final survey.



LEGEND:

- Wall not allowed to be hacked or altered (including by way of drilling) (Refer to the clause pertaining to PPVC in the S&P Documents)
- Services void space (excluded from strata area)
- Rainwater downpipe shaft space (excluded from strata area)

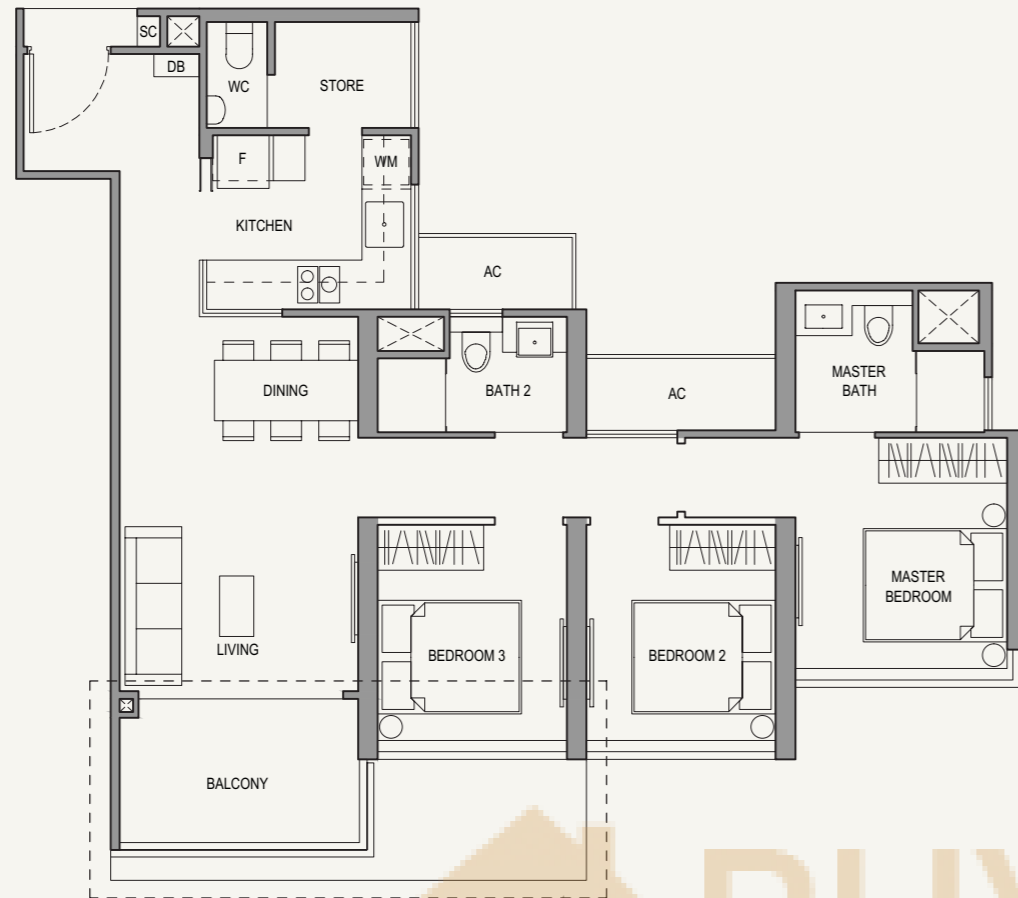
Area include A/C ledge, balcony, PES and void (where applicable). Some units are mirror images of the apartment plans shown in the brochure. Please refer to the key plans for orientation. The plans are correct at the time of printing and are subject to such amendments as may be required or approved by the relevant authorities. The plans are not drawn to scale and are for the purpose of visual representation of the different available layouts. All floor areas are estimates only and are subject to final survey.



3-BEDROOM

Type 3BR P1a
90 sqm / 969sq ft

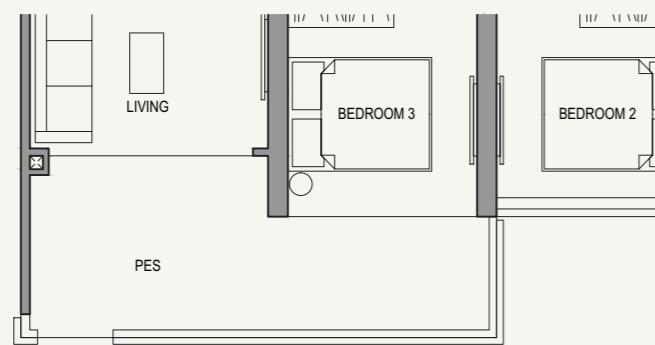
#03-03 to 05-03
#03-15 to 05-15*
#03-32 to 05-32*



LINE OF PES CANOPY BELOW
APPLICABLE TO: #03-03
#03-15*
#03-32*

Type 3BR P1-P
96 sqm / 1033 sq ft

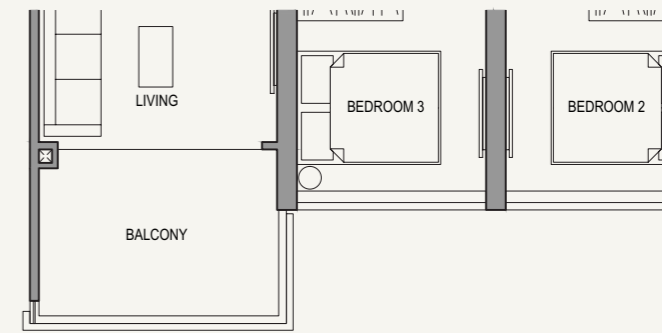
#02-03
#02-15*
#02-32*



3-BEDROOM

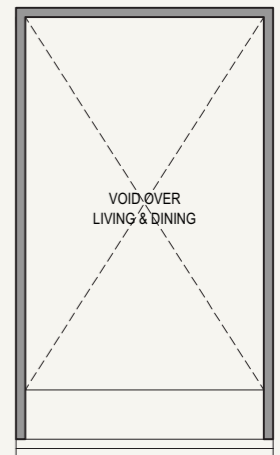
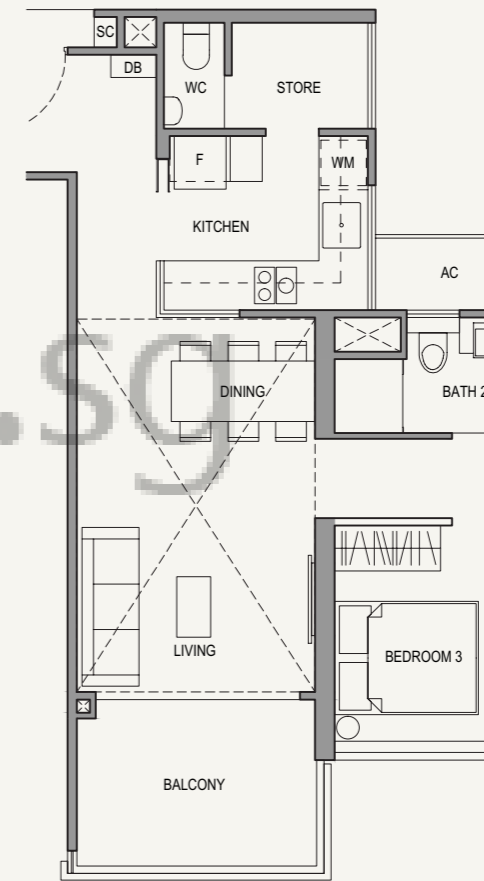
Type 3BR P1b
91 sqm / 980 sq ft

#06-03 to 21-03
#06-15 to 21-15*
#06-32 to 21-32*



Type 3BR P1-H
108 sqm / 1163 sq ft

#22-03
#22-15*
#22-32*



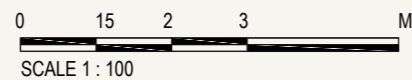
LOWER

UPPER

LEGEND:

- Wall not allowed to be hacked or altered (including by way of drilling) (Refer to the clause pertaining to PPVC in the S&P Documents)
- Services void space (excluded from strata area)
- Rainwater downpipe shaft space (excluded from strata area)

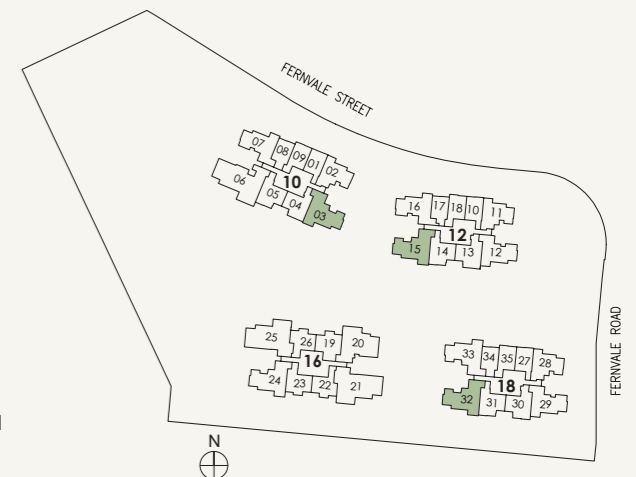
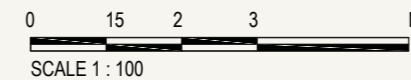
*MIRROR IMAGE
Area include A/C ledge, balcony, PES and void (where applicable). Some units are mirror images of the apartment plans shown in the brochure. Please refer to the key plans for orientation. The plans are correct at the time of printing and are subject to such amendments as may be required or approved by the relevant authorities. The plans are not drawn to scale and are for the purpose of visual representation of the different available layouts. All floor areas are estimates only and are subject to final survey.



LEGEND:

- Wall not allowed to be hacked or altered (including by way of drilling) (Refer to the clause pertaining to PPVC in the S&P Documents)
- Services void space (excluded from strata area)
- Rainwater downpipe shaft space (excluded from strata area)

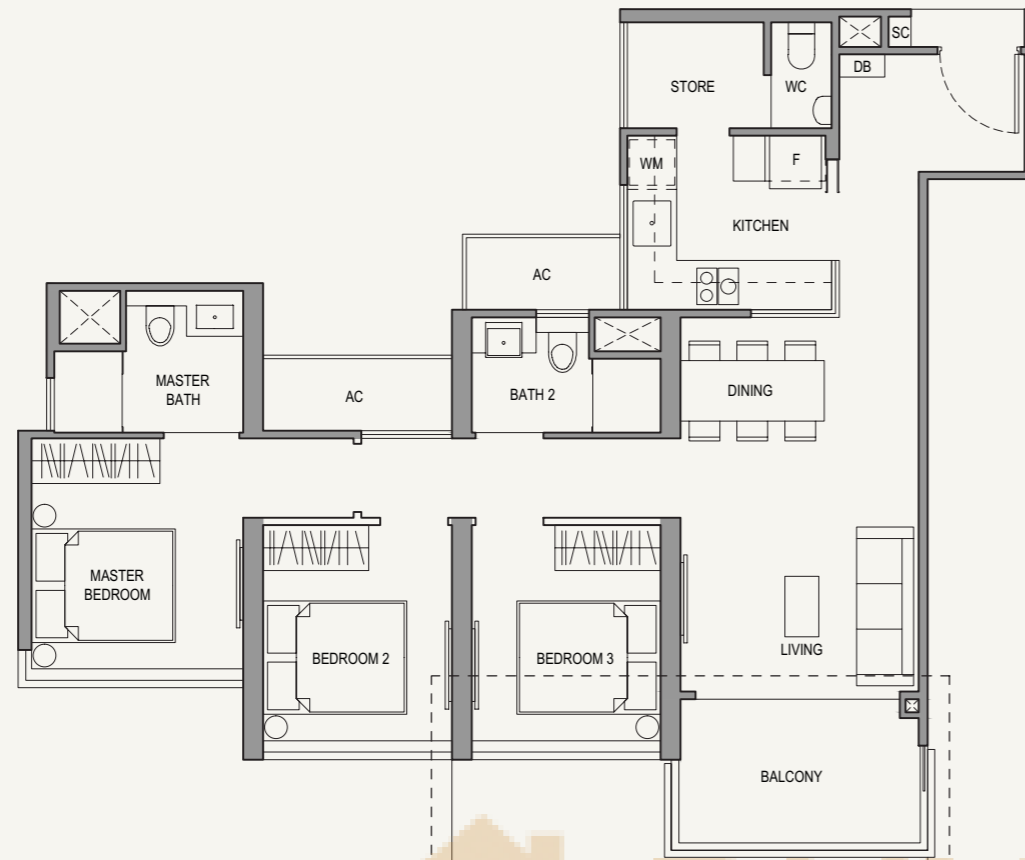
*MIRROR IMAGE
Area include A/C ledge, balcony, PES and void (where applicable). Some units are mirror images of the apartment plans shown in the brochure. Please refer to the key plans for orientation. The plans are correct at the time of printing and are subject to such amendments as may be required or approved by the relevant authorities. The plans are not drawn to scale and are for the purpose of visual representation of the different available layouts. All floor areas are estimates only and are subject to final survey.



3-BEDROOM

Type 3BR P2a
89 sqm / 958 sq ft

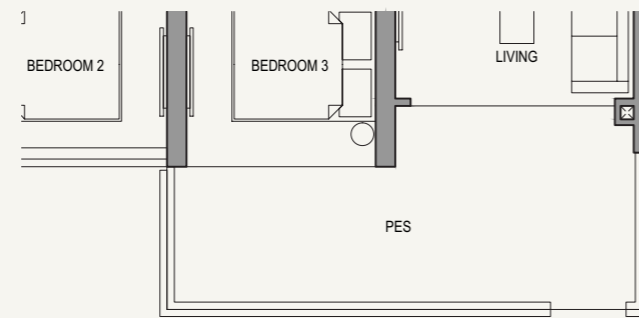
#03-24 to 05-24



LINE OF PES CANOPY BELOW
APPLICABLE TO: #03-24

Type 3BR P2-P
97 sqm / 1044 sq ft

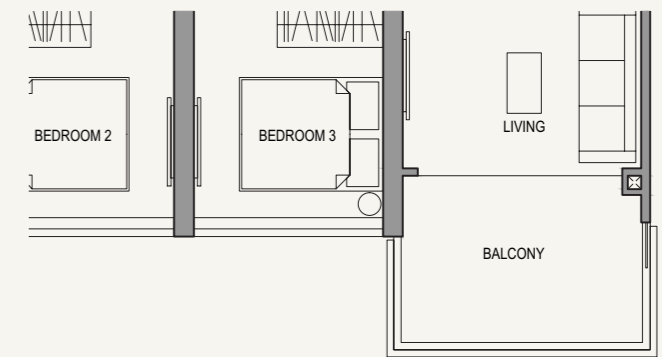
#02-24



3-BEDROOM

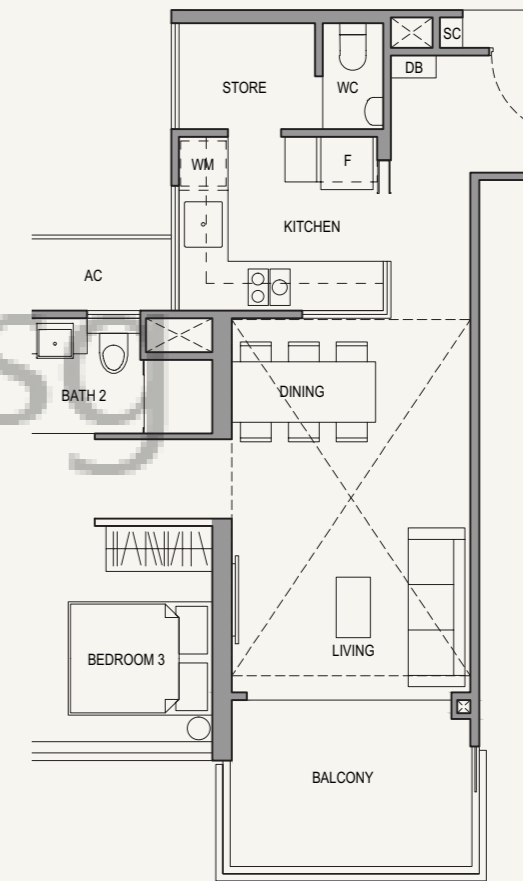
Type 3BR P2b
90 sqm / 969 sq ft

#06-24 to 21-24

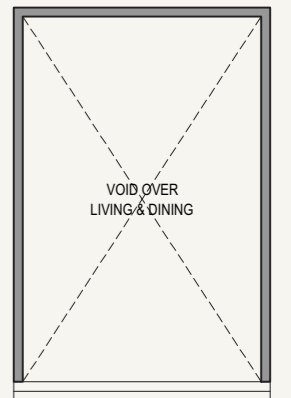


Type 3BR P2-H
105 sqm / 1130 sq ft

#22-24



LOWER

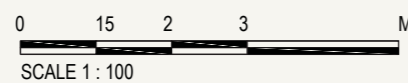


UPPER

LEGEND:

- Wall not allowed to be hacked or altered (including by way of drilling) (Refer to the clause pertaining to PPVC in the S&P Documents)
- Services void space (excluded from strata area)
- Rainwater downpipe shaft space (excluded from strata area)

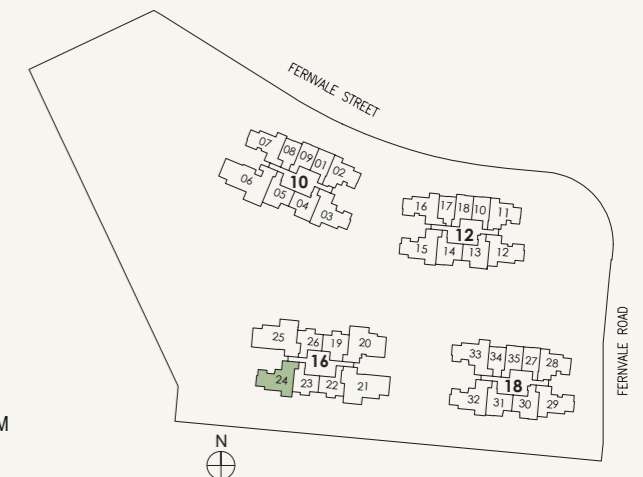
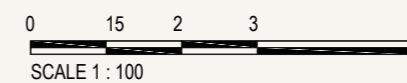
Area include A/C ledge, balcony, PES and void (where applicable). Some units are mirror images of the apartment plans shown in the brochure. Please refer to the key plans for orientation. The plans are correct at the time of printing and are subject to such amendments as may be required or approved by the relevant authorities. The plans are not drawn to scale and are for the purpose of visual representation of the different available layouts. All floor areas are estimates only and are subject to final survey.



LEGEND:

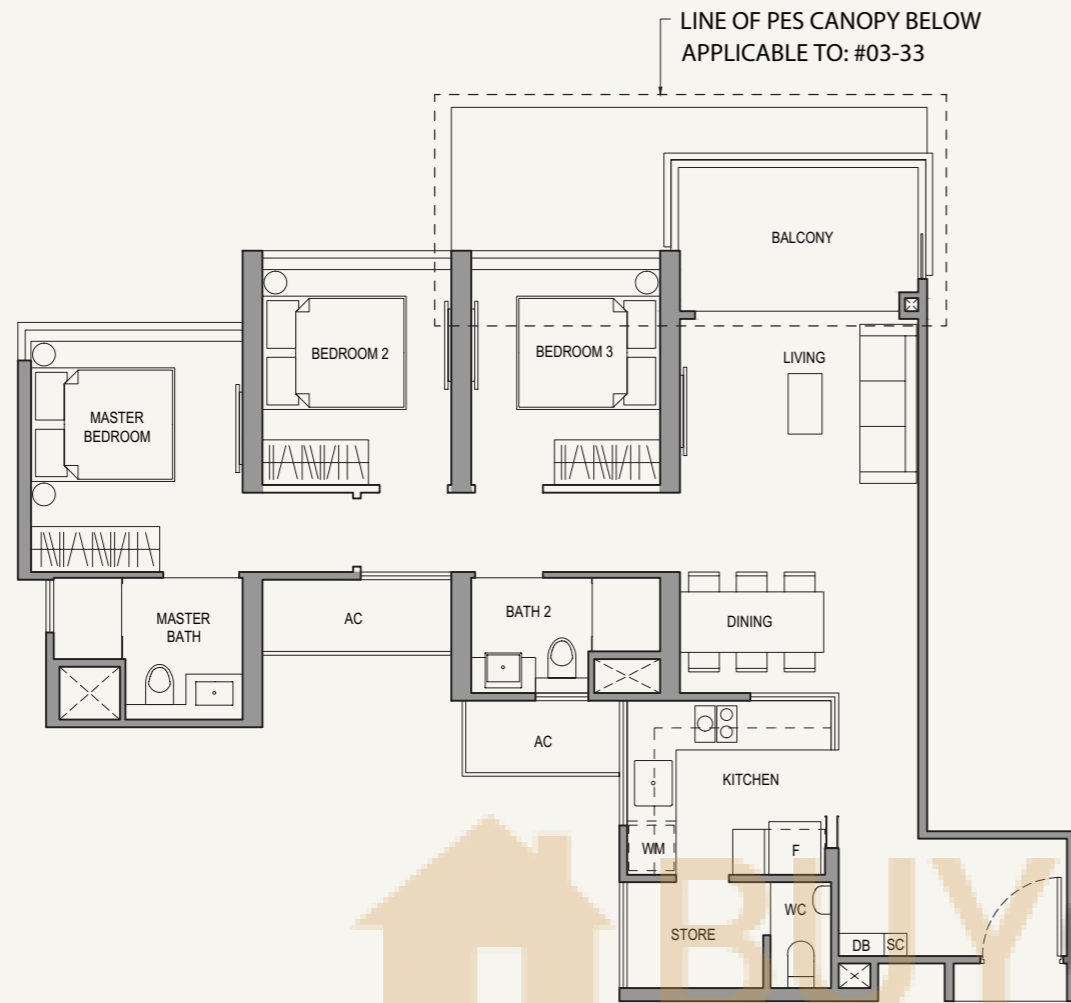
- Wall not allowed to be hacked or altered (including by way of drilling) (Refer to the clause pertaining to PPVC in the S&P Documents)
- Services void space (excluded from strata area)
- Rainwater downpipe shaft space (excluded from strata area)

Area include A/C ledge, balcony, PES and void (where applicable). Some units are mirror images of the apartment plans shown in the brochure. Please refer to the key plans for orientation. The plans are correct at the time of printing and are subject to such amendments as may be required or approved by the relevant authorities. The plans are not drawn to scale and are for the purpose of visual representation of the different available layouts. All floor areas are estimates only and are subject to final survey.

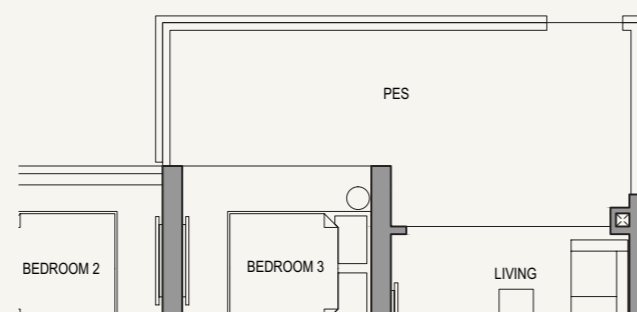


3-BEDROOM

Type 3BR P3a
90 sqm / 969 sq ft
#03-33 to 05-33

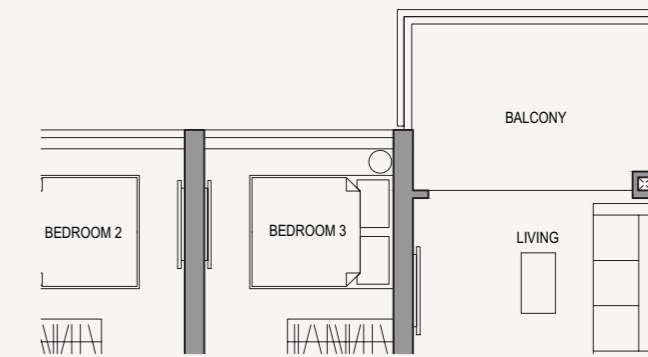


Type 3BR P3-P
98 sqm / 1055 sq ft
#02-33

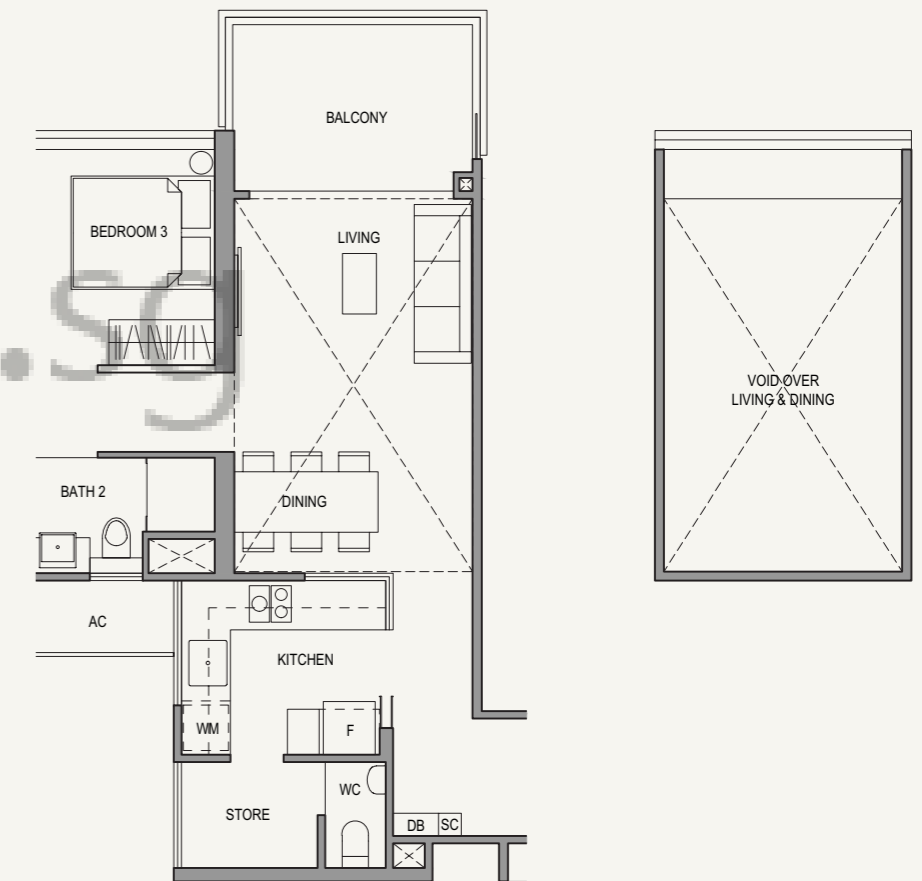


3-BEDROOM

Type 3BR P3b
91 sqm / 980 sq ft
#06-33 to 21-33

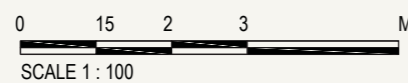


Type 3BR P3-H
108 sqm / 1163 sq ft
#22-33



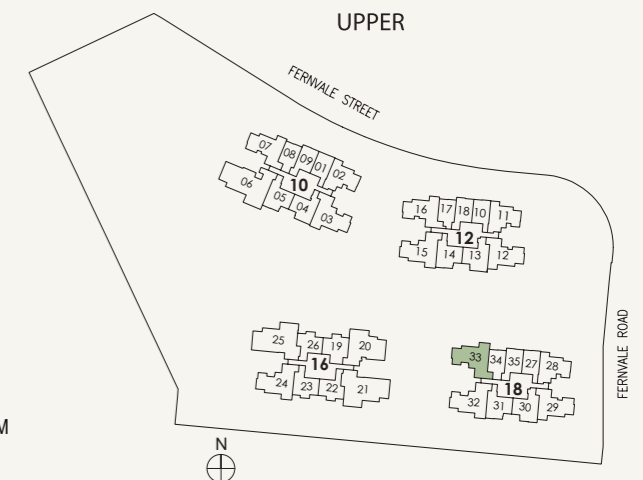
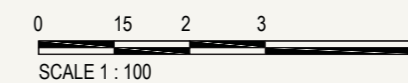
- LEGEND:
- Wall not allowed to be hacked or altered (including by way of drilling) (Refer to the clause pertaining to PPVC in the S&P Documents)
 - Services void space (excluded from strata area)
 - Rainwater downpipe shaft space (excluded from strata area)

Area include A/C ledge, balcony, PES and void (where applicable). Some units are mirror images of the apartment plans shown in the brochure. Please refer to the key plans for orientation. The plans are correct at the time of printing and are subject to such amendments as may be required or approved by the relevant authorities. The plans are not drawn to scale and are for the purpose of visual representation of the different available layouts. All floor areas are estimates only and are subject to final survey.



- LEGEND:
- Wall not allowed to be hacked or altered (including by way of drilling) (Refer to the clause pertaining to PPVC in the S&P Documents)
 - Services void space (excluded from strata area)
 - Rainwater downpipe shaft space (excluded from strata area)

Area include A/C ledge, balcony, PES and void (where applicable). Some units are mirror images of the apartment plans shown in the brochure. Please refer to the key plans for orientation. The plans are correct at the time of printing and are subject to such amendments as may be required or approved by the relevant authorities. The plans are not drawn to scale and are for the purpose of visual representation of the different available layouts. All floor areas are estimates only and are subject to final survey.





4-BEDROOM

UNIT TYPES

4BR Ca
105 sqm / 1130 sq ft

4BR C-P
121 sqm / 1302 sq ft

4BR Cb
107 sqm / 1152 sq ft

4BR C-H
124 sqm / 1335 sq ft

4BR Pa
116 sqm / 1249 sq ft

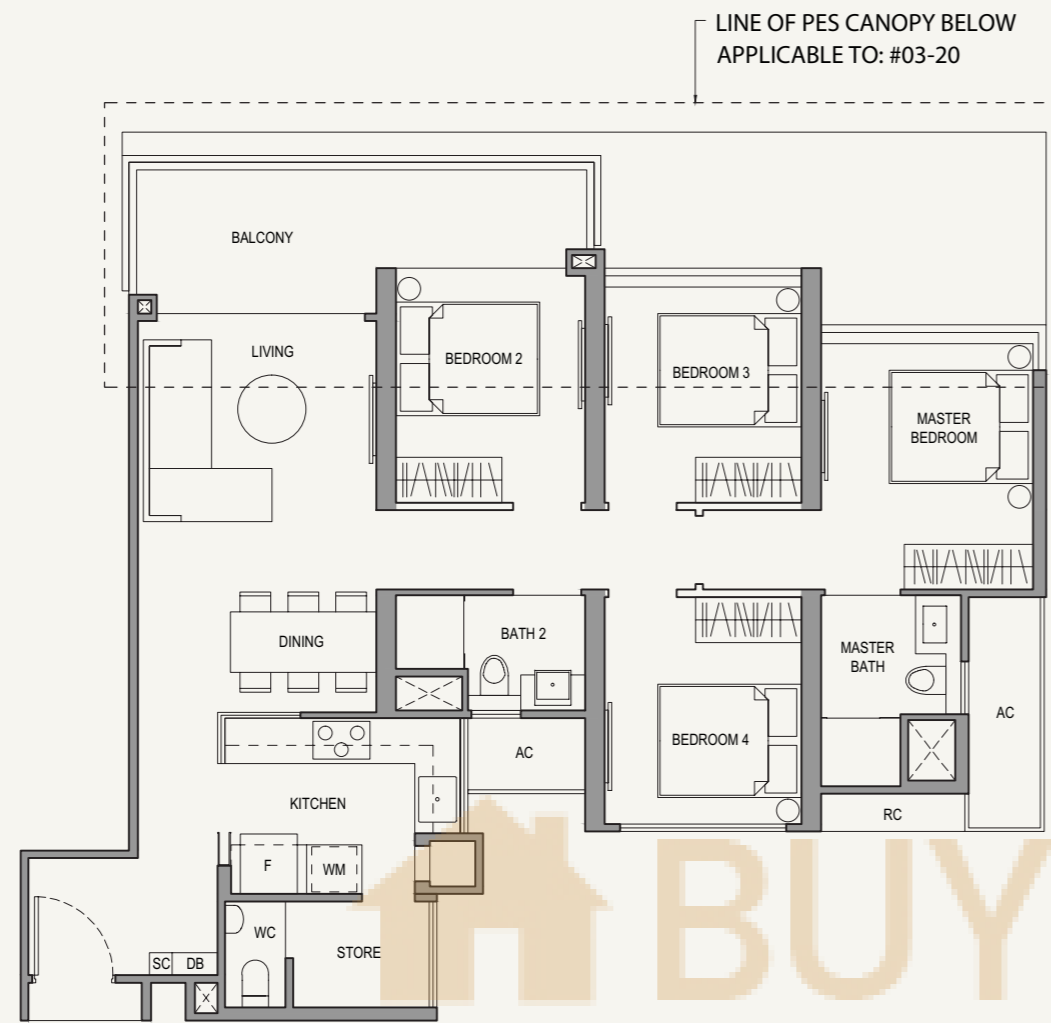
4BR P-P
135 sqm / 1453 sq ft

4BR Pb
119 sqm / 1281 sq ft

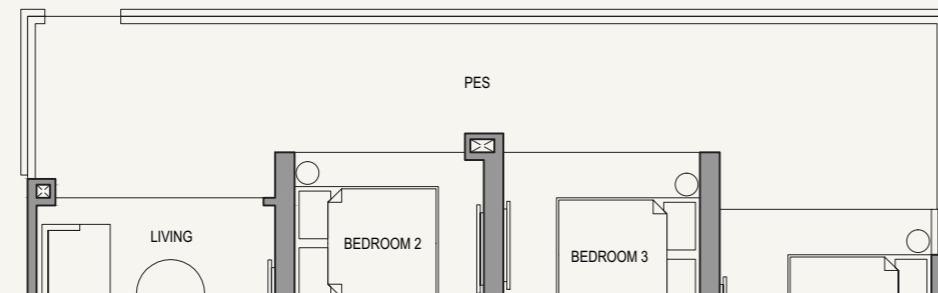
4BR P-H
140 sqm / 1507 sq ft

4-BEDROOM

Type 4BR Ca
105 sqm / 1130 sq ft
#03-20 to 05-20

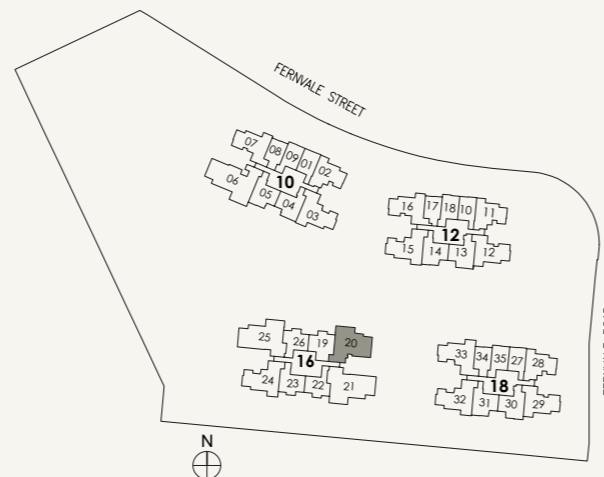
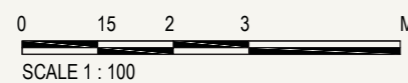


Type 4BR C-P
121 sqm / 1302 sq ft
#02-20



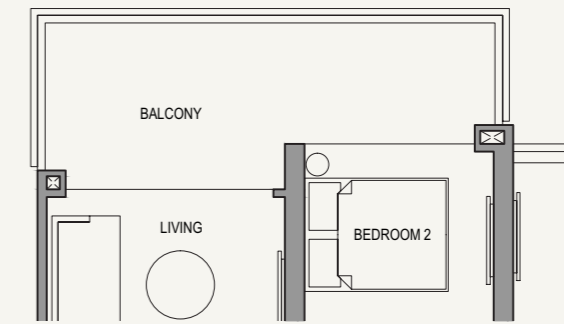
- LEGEND:
- Wall not allowed to be hacked or altered (including by way of drilling) (Refer to the clause pertaining to PPVC in the S&P Documents)
 - Services void space (excluded from strata area)
 - Rainwater downpipe shaft space (excluded from strata area)

Area include A/C ledge, balcony, PES and void (where applicable). Some units are mirror images of the apartment plans shown in the brochure. Please refer to the key plans for orientation. The plans are correct at the time of printing and are subject to such amendments as may be required or approved by the relevant authorities. The plans are not drawn to scale and are for the purpose of visual representation of the different available layouts. All floor areas are estimates only and are subject to final survey.

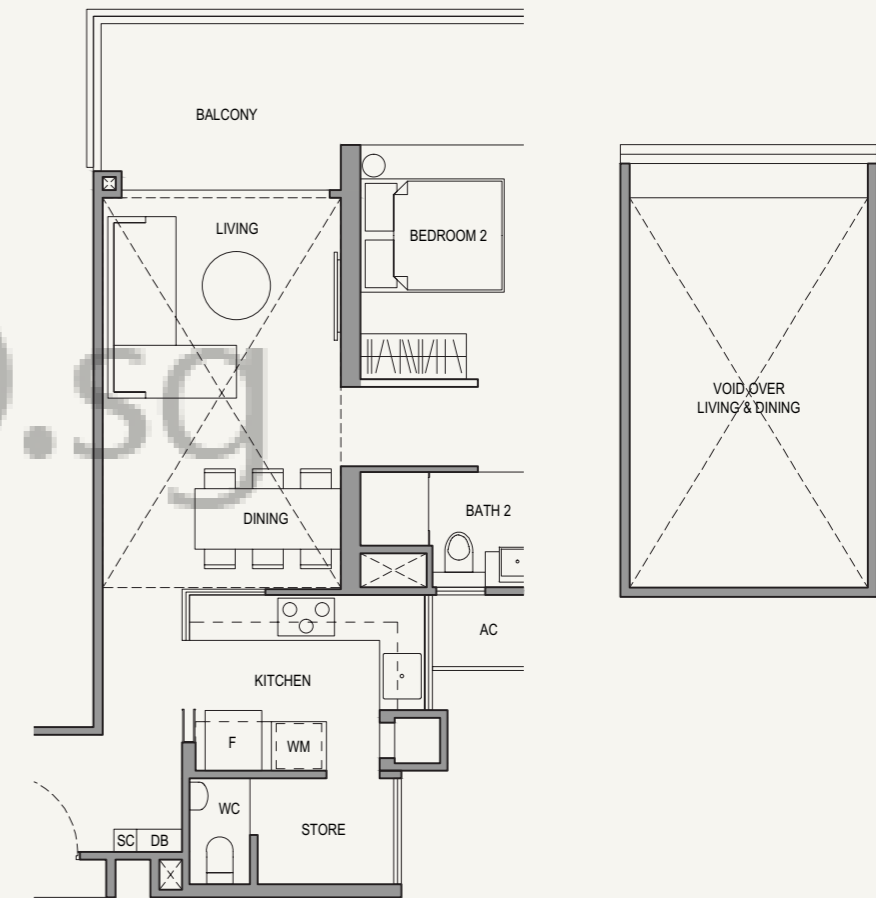


4-BEDROOM

Type 4BR Cb
107 sqm / 1152 sq ft
#06-20 to 21-20



Type 4BR C-H
124 sqm / 1335 sq ft
#22-20

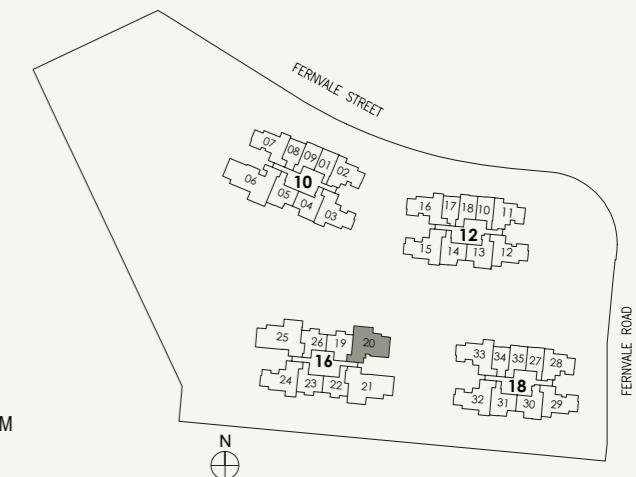
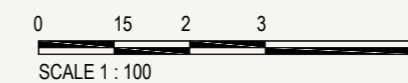


LOWER

UPPER

- LEGEND:
- Wall not allowed to be hacked or altered (including by way of drilling) (Refer to the clause pertaining to PPVC in the S&P Documents)
 - Services void space (excluded from strata area)
 - Rainwater downpipe shaft space (excluded from strata area)

Area include A/C ledge, balcony, PES and void (where applicable). Some units are mirror images of the apartment plans shown in the brochure. Please refer to the key plans for orientation. The plans are correct at the time of printing and are subject to such amendments as may be required or approved by the relevant authorities. The plans are not drawn to scale and are for the purpose of visual representation of the different available layouts. All floor areas are estimates only and are subject to final survey.



4-BEDROOM

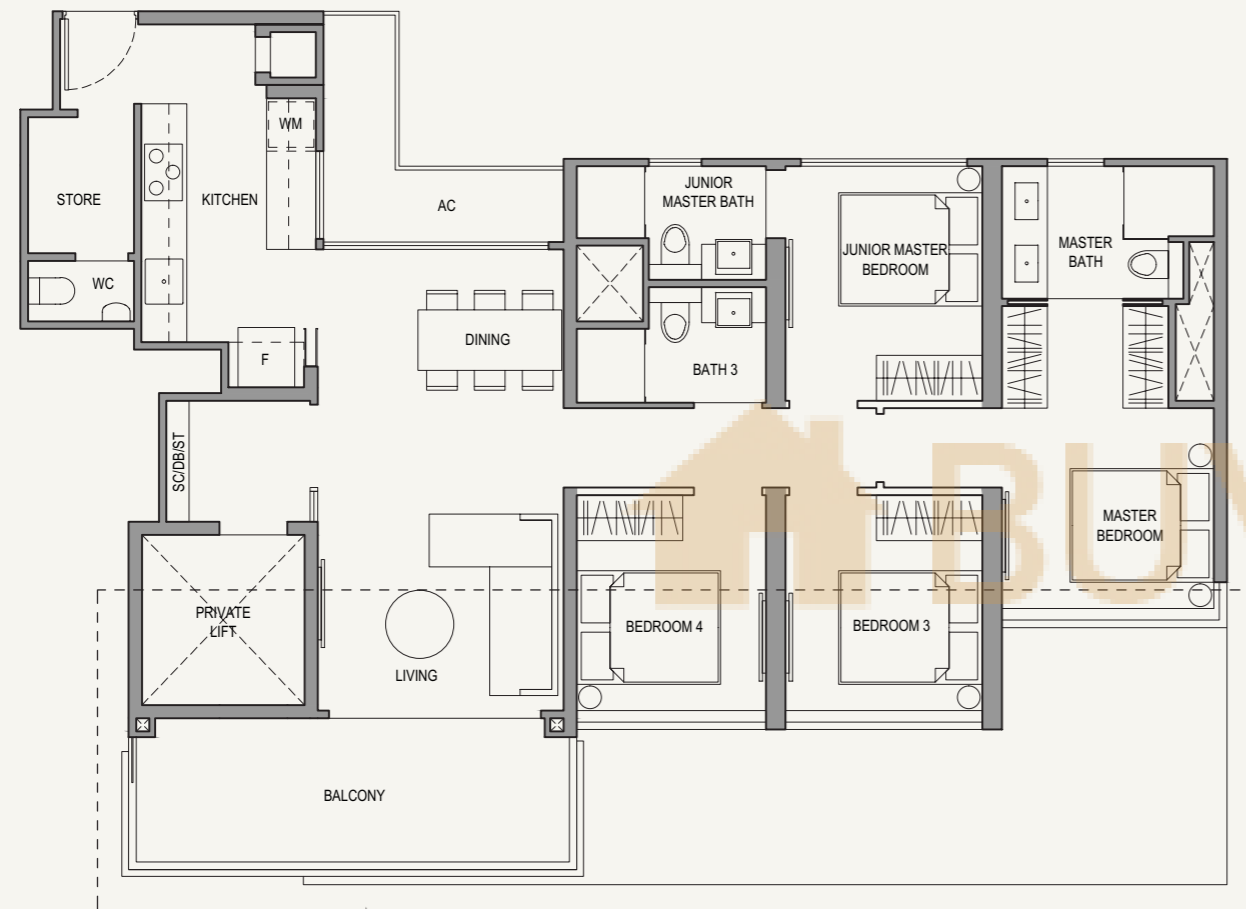
4-BEDROOM

Type 4BR Pa
116 sqm / 1249 sq ft

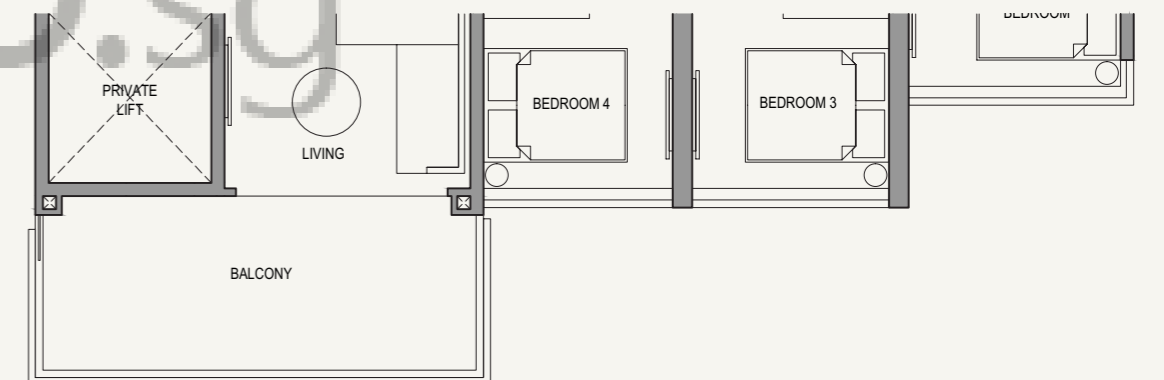
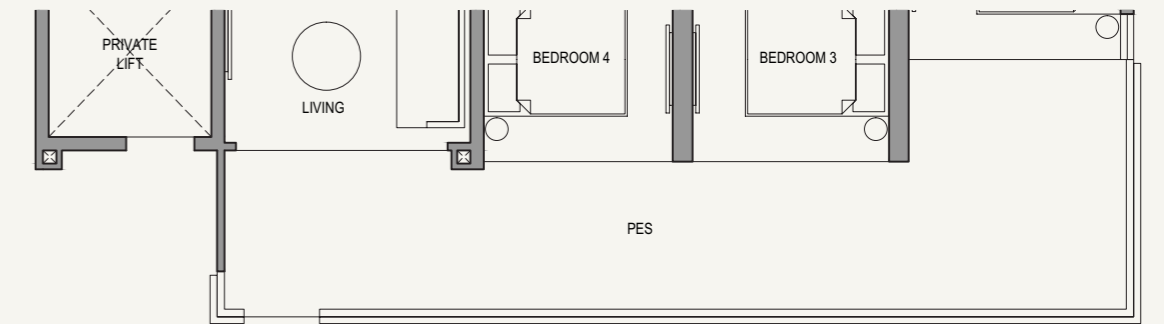
Type 4BR P-P
135 sqm / 1453 sq ft

#03-21 to 05-21
#03-25 to 05-25*

#02-21
#02-25*



LINE OF PES CANOPY BELOW
APPLICABLE TO: #03-21
#03-25*

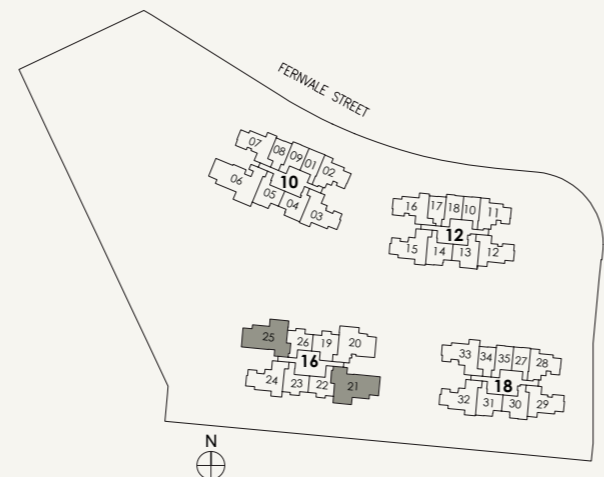
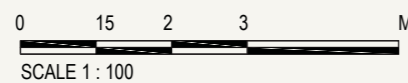


Type 4BR Pb
119 sqm / 1281 sq ft

#06-21 to 21-21
#06-25 to 21-25*

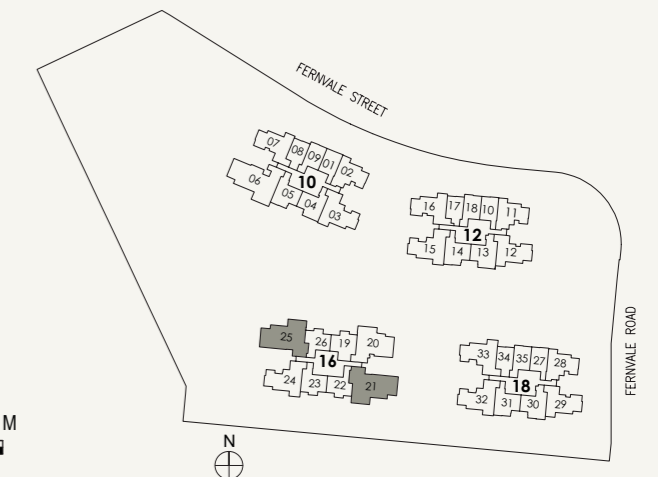
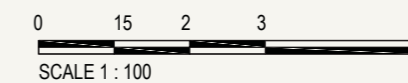
- LEGEND:
- Wall not allowed to be hacked or altered (including by way of drilling) (Refer to the clause pertaining to PPVC in the S&P Documents)
 - Services void space (excluded from strata area)
 - Rainwater downpipe shaft space (excluded from strata area)

*MIRROR IMAGE
Area include A/C ledge, balcony, PES and void (where applicable). Some units are mirror images of the apartment plans shown in the brochure. Please refer to the key plans for orientation. The plans are correct at the time of printing and are subject to such amendments as may be required or approved by the relevant authorities. The plans are not drawn to scale and are for the purpose of visual representation of the different available layouts. All floor areas are estimates only and are subject to final survey.



- LEGEND:
- Wall not allowed to be hacked or altered (including by way of drilling) (Refer to the clause pertaining to PPVC in the S&P Documents)
 - Services void space (excluded from strata area)
 - Rainwater downpipe shaft space (excluded from strata area)

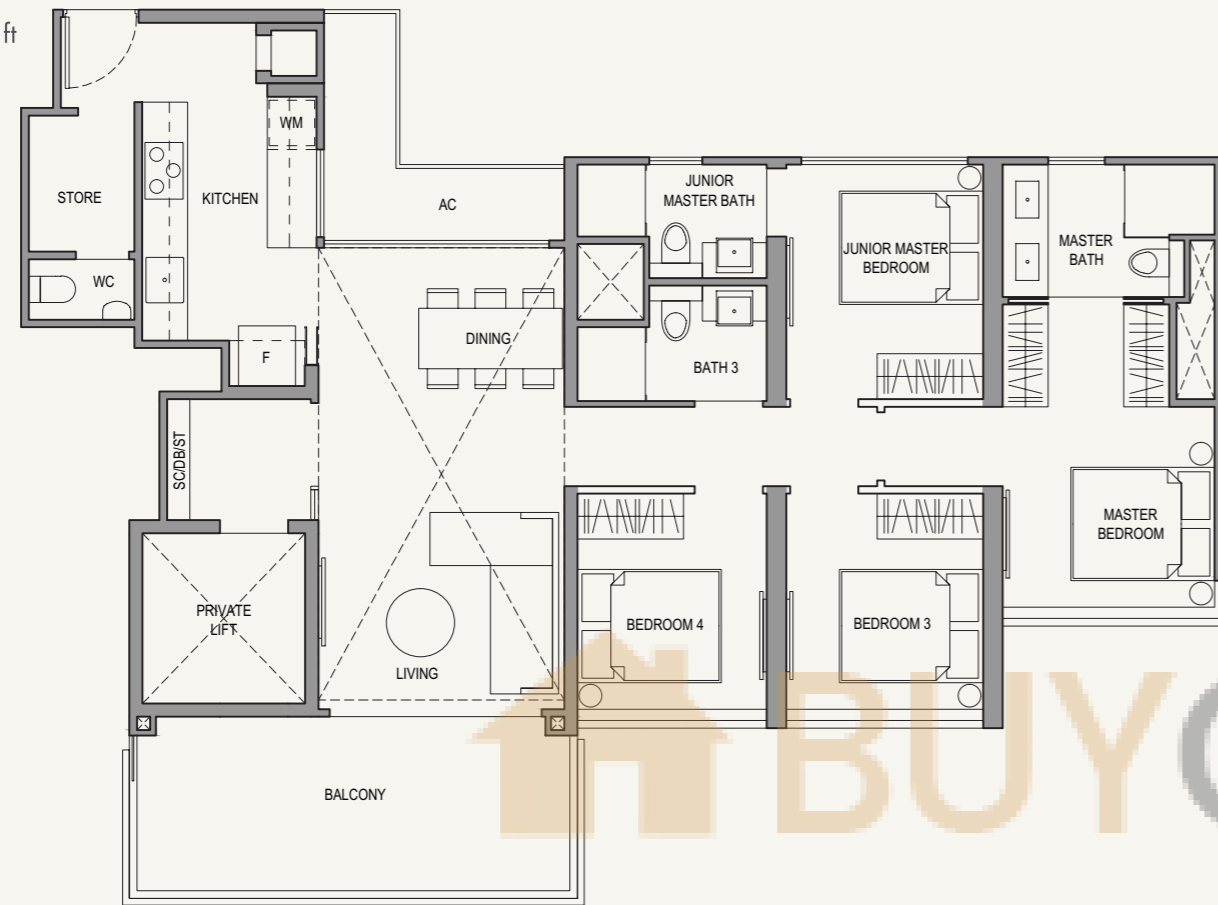
*MIRROR IMAGE
Area include A/C ledge, balcony, PES and void (where applicable). Some units are mirror images of the apartment plans shown in the brochure. Please refer to the key plans for orientation. The plans are correct at the time of printing and are subject to such amendments as may be required or approved by the relevant authorities. The plans are not drawn to scale and are for the purpose of visual representation of the different available layouts. All floor areas are estimates only and are subject to final survey.



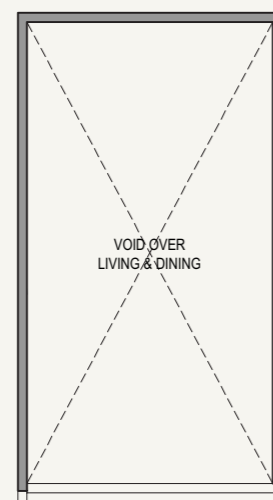
4-BEDROOM

Type 4BR P-H
140 sqm / 1507 sq ft

#22-21
#22-25*



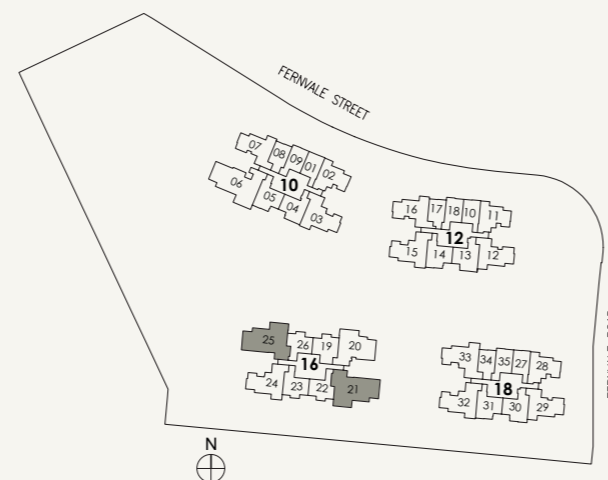
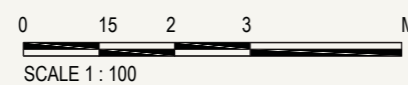
LOWER



UPPER

- LEGEND:
- Wall not allowed to be hacked or altered (including by way of drilling) (Refer to the clause pertaining to PPVC in the S&P Documents)
 - Services void space (excluded from strata area)
 - Rainwater downpipe shaft space (excluded from strata area)

*MIRROR IMAGE
Area include A/C ledge, balcony, PES and void (where applicable). Some units are mirror images of the apartment plans shown in the brochure. Please refer to the key plans for orientation. The plans are correct at the time of printing and are subject to such amendments as may be required or approved by the relevant authorities. The plans are not drawn to scale and are for the purpose of visual representation of the different available layouts. All floor areas are estimates only and are subject to final survey.



5-BEDROOM

UNIT TYPES

5BRa

131 sqm / 1410 sq ft

5BR-P

155 sqm / 1668 sq ft

5BRb

135 sqm / 1453 sq ft

5BR-H

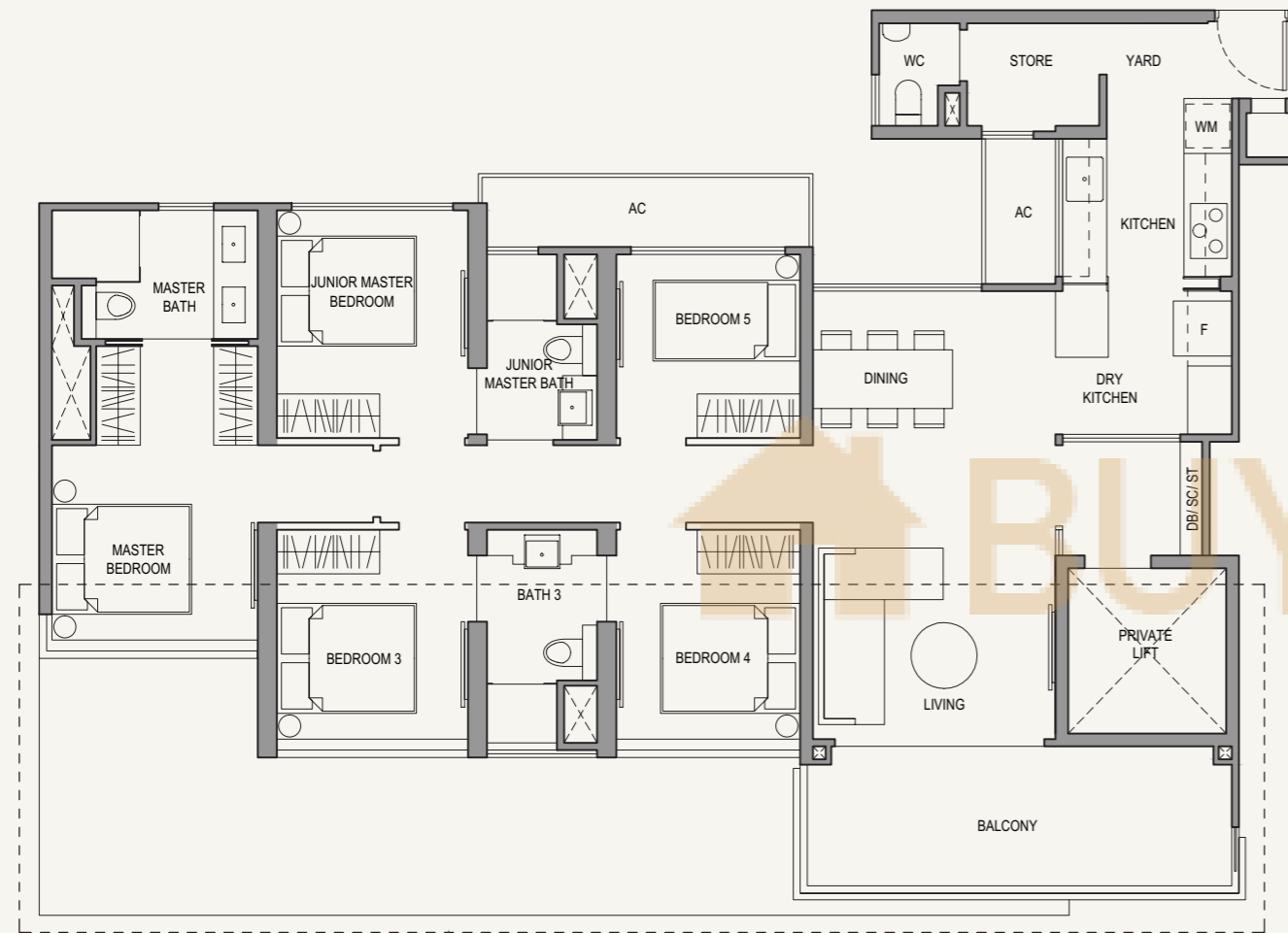
156 sqm / 1679 sq ft

5-BEDROOM

Type 5BRa

131 sqm / 1410 sq ft

#03-06 to 05-06

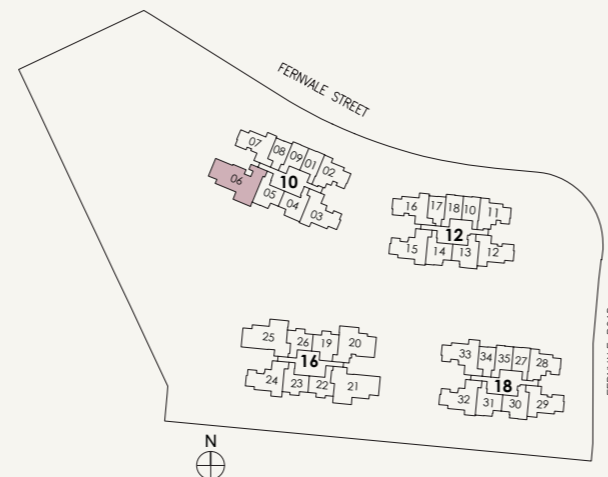
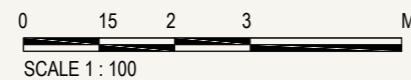


LINE OF PES CANOPY BELOW
APPLICABLE TO: #03-06

LEGEND:

- Wall not allowed to be hacked or altered (including by way of drilling) (Refer to the clause pertaining to PPVC in the S&P Documents)
- Services void space (excluded from strata area)
- Rainwater downpipe shaft space (excluded from strata area)

Area include A/C ledge, balcony, PES and void (where applicable). Some units are mirror images of the apartment plans shown in the brochure. Please refer to the key plans for orientation. The plans are correct at the time of printing and are subject to such amendments as may be required or approved by the relevant authorities. The plans are not drawn to scale and are for the purpose of visual representation of the different available layouts. All floor areas are estimates only and are subject to final survey.

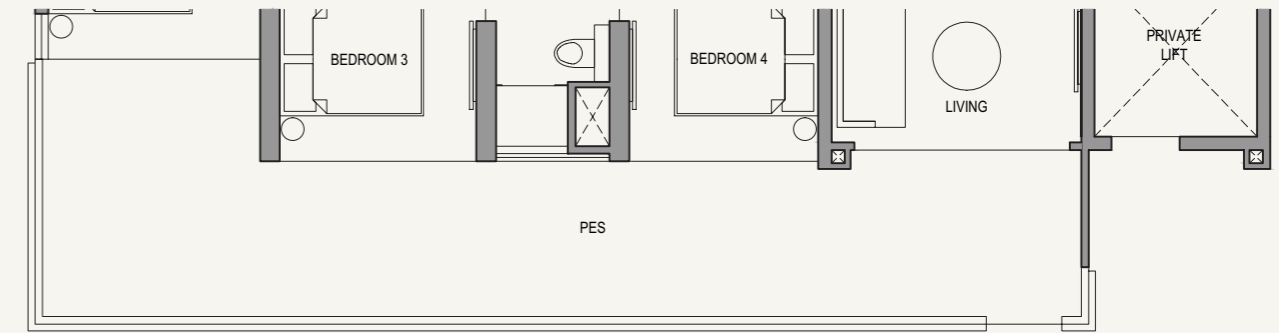


5-BEDROOM

Type 5BR-P

155 sqm / 1668 sq ft

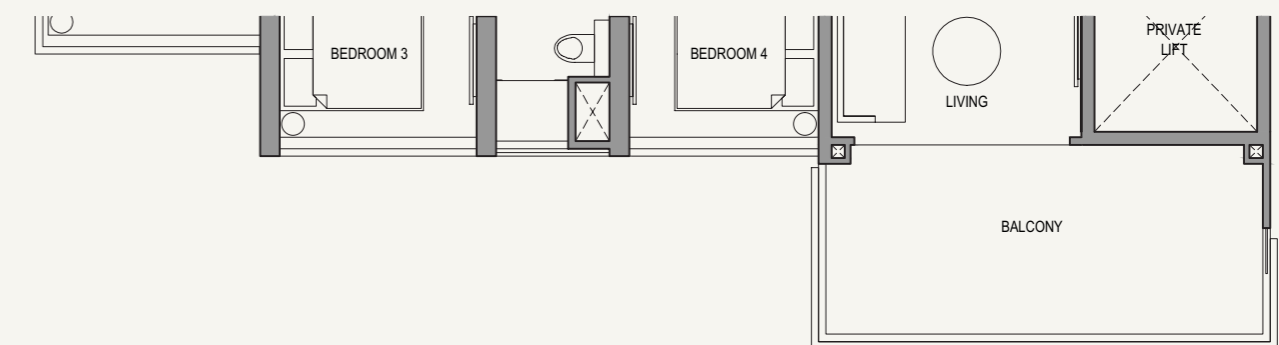
#02-06



Type 5BRb

135 sqm / 1453 sq ft

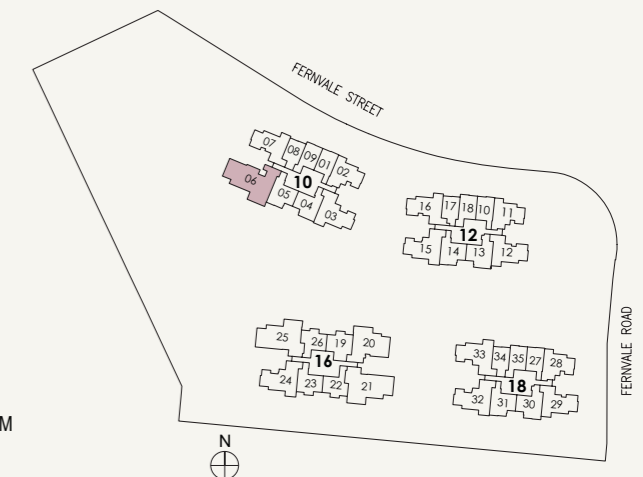
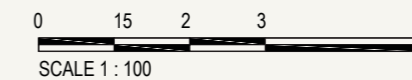
#06-06 to 21-06



LEGEND:

- Wall not allowed to be hacked or altered (including by way of drilling) (Refer to the clause pertaining to PPVC in the S&P Documents)
- Services void space (excluded from strata area)
- Rainwater downpipe shaft space (excluded from strata area)

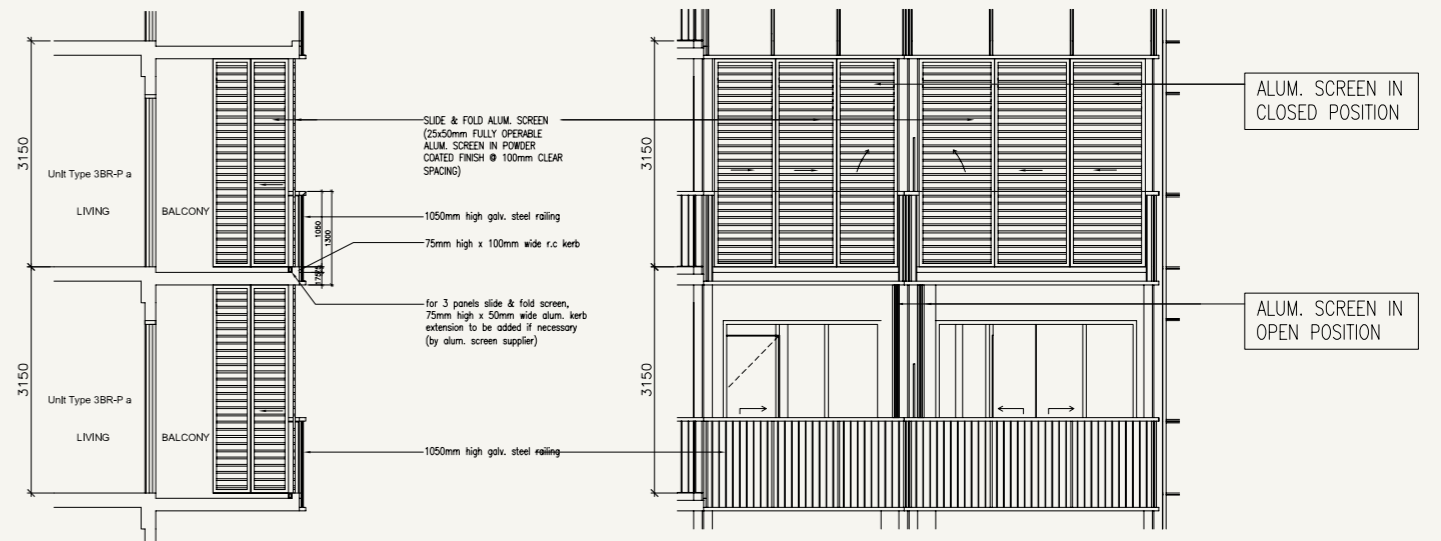
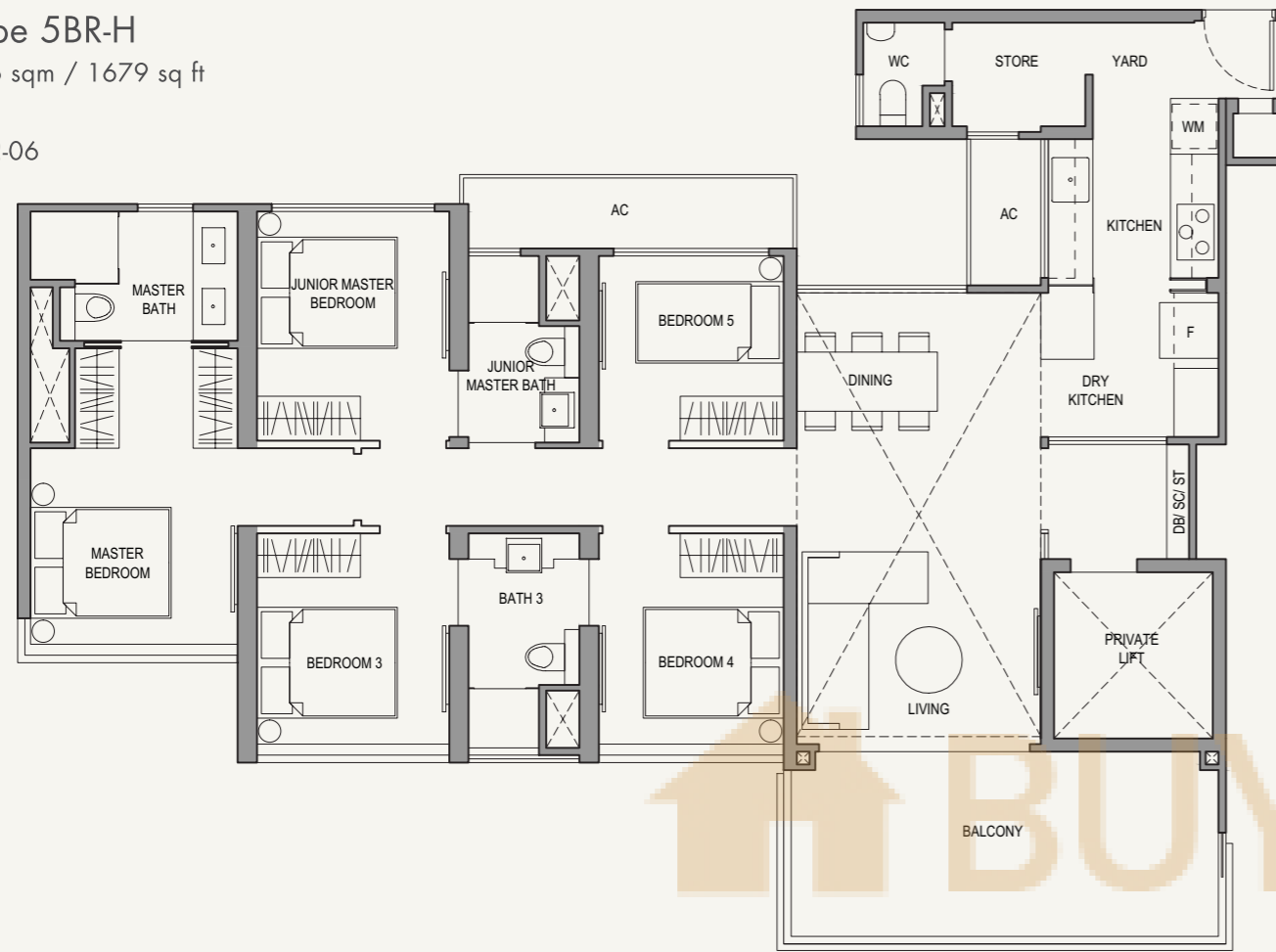
Area include A/C ledge, balcony, PES and void (where applicable). Some units are mirror images of the apartment plans shown in the brochure. Please refer to the key plans for orientation. The plans are correct at the time of printing and are subject to such amendments as may be required or approved by the relevant authorities. The plans are not drawn to scale and are for the purpose of visual representation of the different available layouts. All floor areas are estimates only and are subject to final survey.



5-BEDROOM

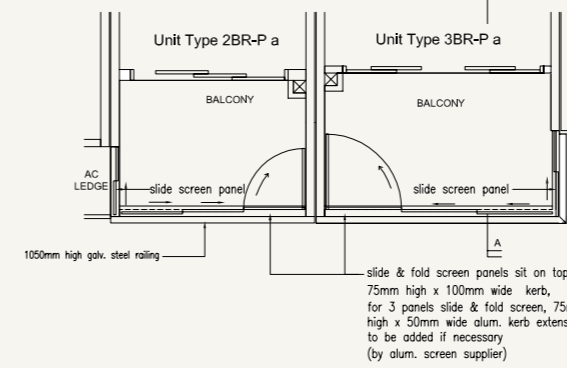
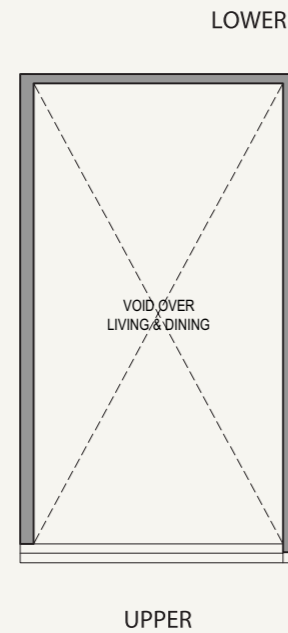
TYPICAL BALCONY WITH SCREEN

Type 5BR-H
156 sqm / 1679 sq ft
#22-06



SECTION A-A (TYPICAL SECTIONS OF BALCONY WITH SCREEN)
1 : 50

TYPICAL FRONT ELEVATION OF BALCONY WITH SCREEN
1 : 50



TYPICAL PLAN OF BALCONY WITH SCREEN

- LEGEND:
- Wall not allowed to be hacked or altered (including by way of drilling) (Refer to the clause pertaining to PPVC in the S&P Documents)
 - Services void space (excluded from strata area)
 - Rainwater downpipe shaft space (excluded from strata area)

Area include A/C ledge, balcony, PES and void (where applicable). Some units are mirror images of the apartment plans shown in the brochure. Please refer to the key plans for orientation. The plans are correct at the time of printing and are subject to such amendments as may be required or approved by the relevant authorities. The plans are not drawn to scale and are for the purpose of visual representation of the different available layouts. All floor areas are estimates only and are subject to final survey.

