

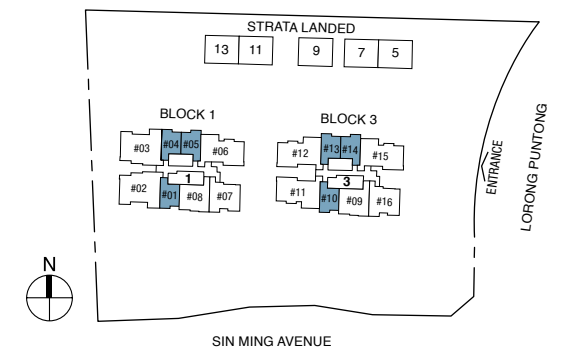
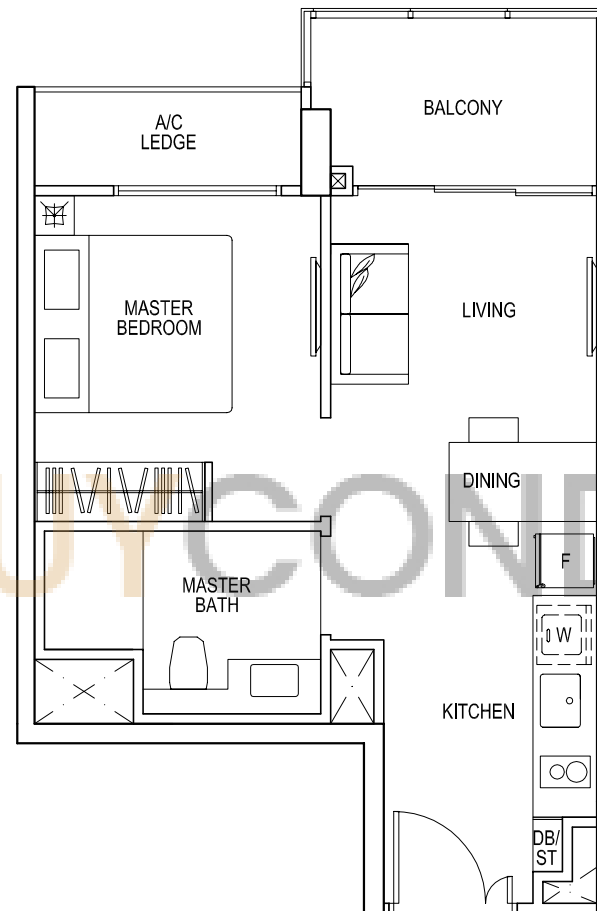
Type A1

STRATA SFA : 43 sqm

#03-01 to #18-01, #03-04 to #18-04 (mirror),

#03-05 to #18-05, #02-10 to #19-10,

#02-13 to #18-13 (mirror), #02-14 to #18-14

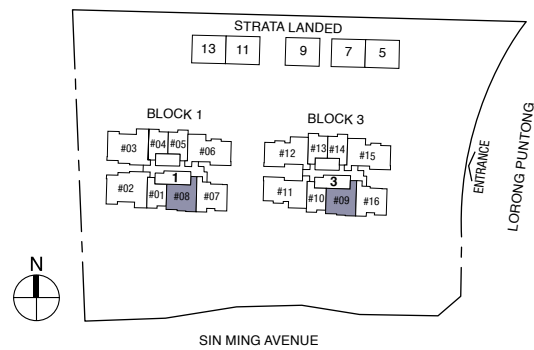
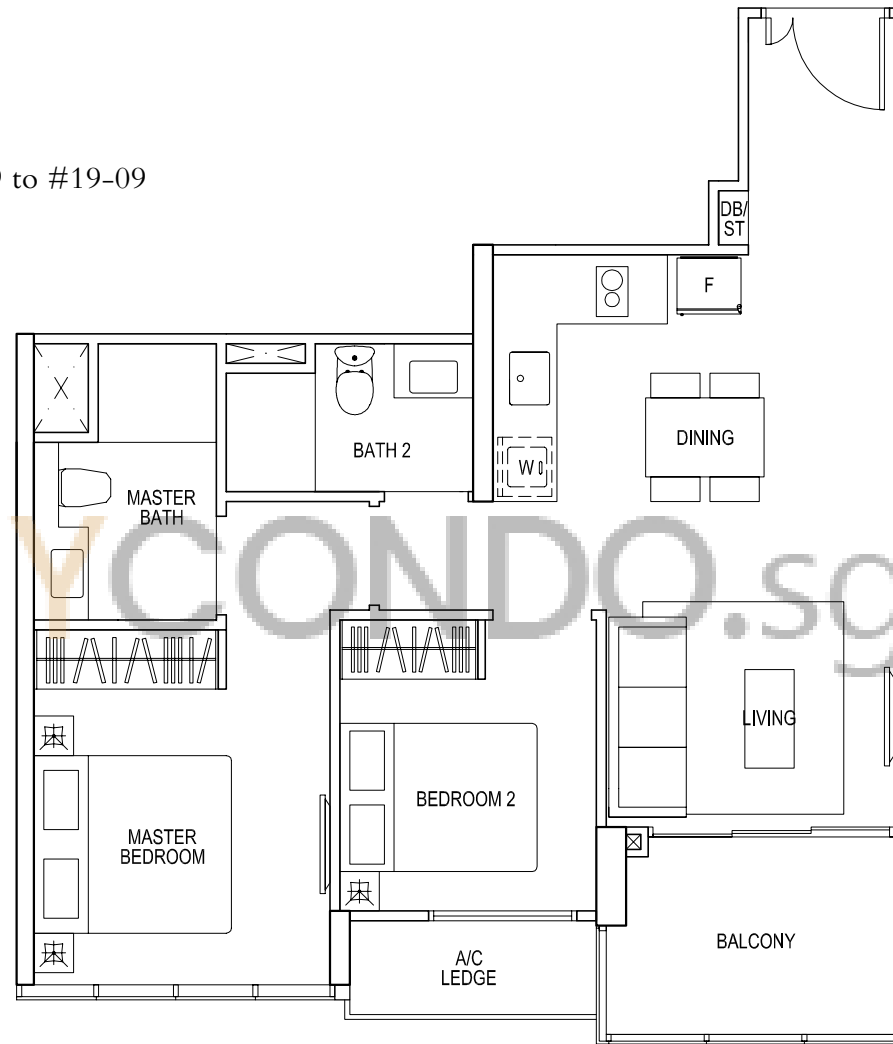


2-BEDROOM

Type B1

STRATA SFA : 68 sqm

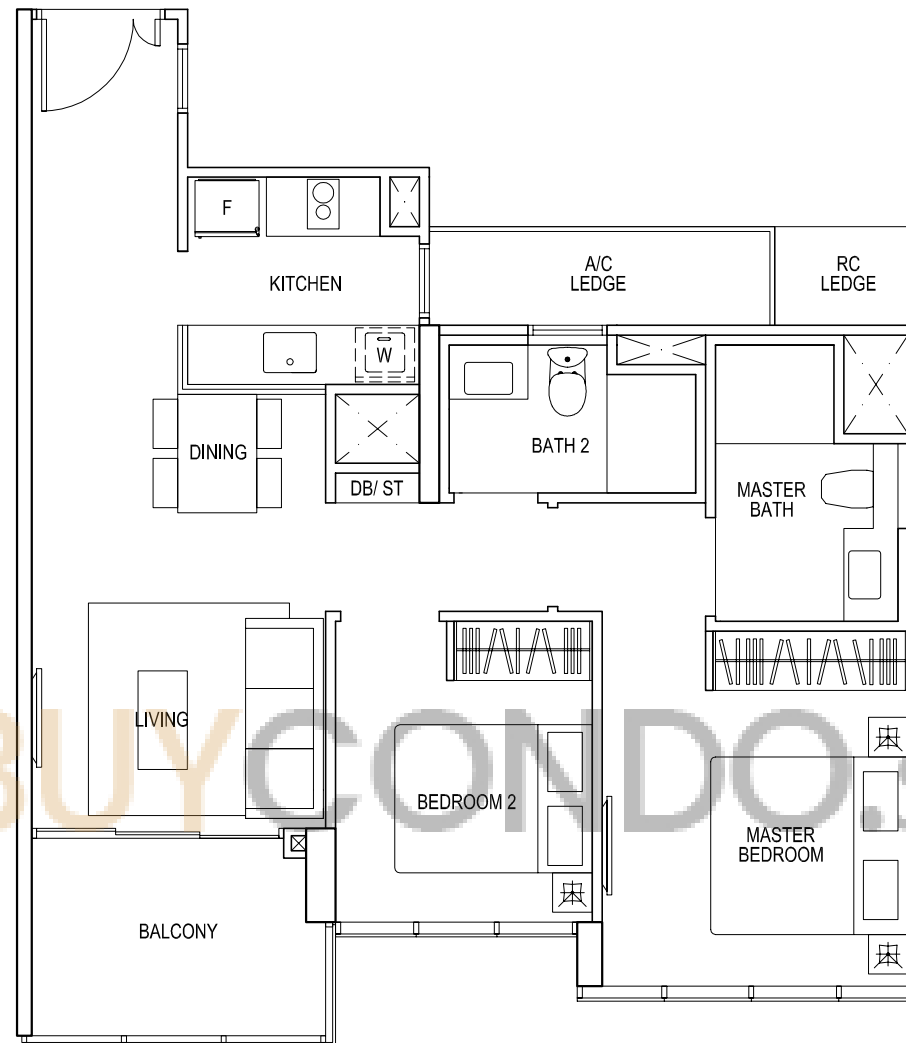
#03-08 to #19-08, #02-09 to #19-09



2-BEDROOM

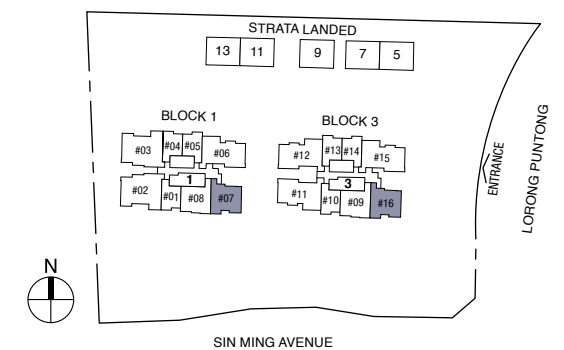
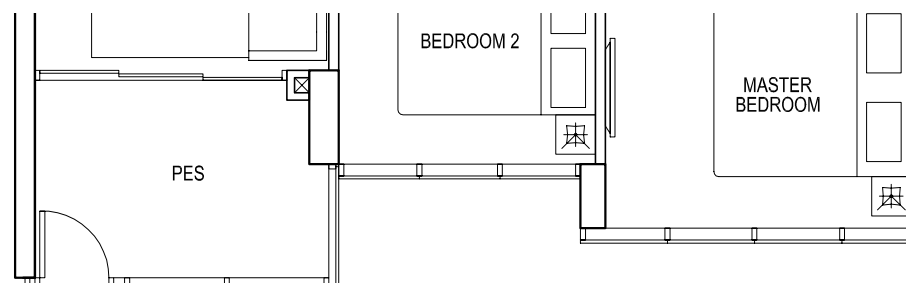
Type B2

STRATA SFA : 71 sqm
#03-07 to #19-07, #02-16 to #19-16



Type B2G

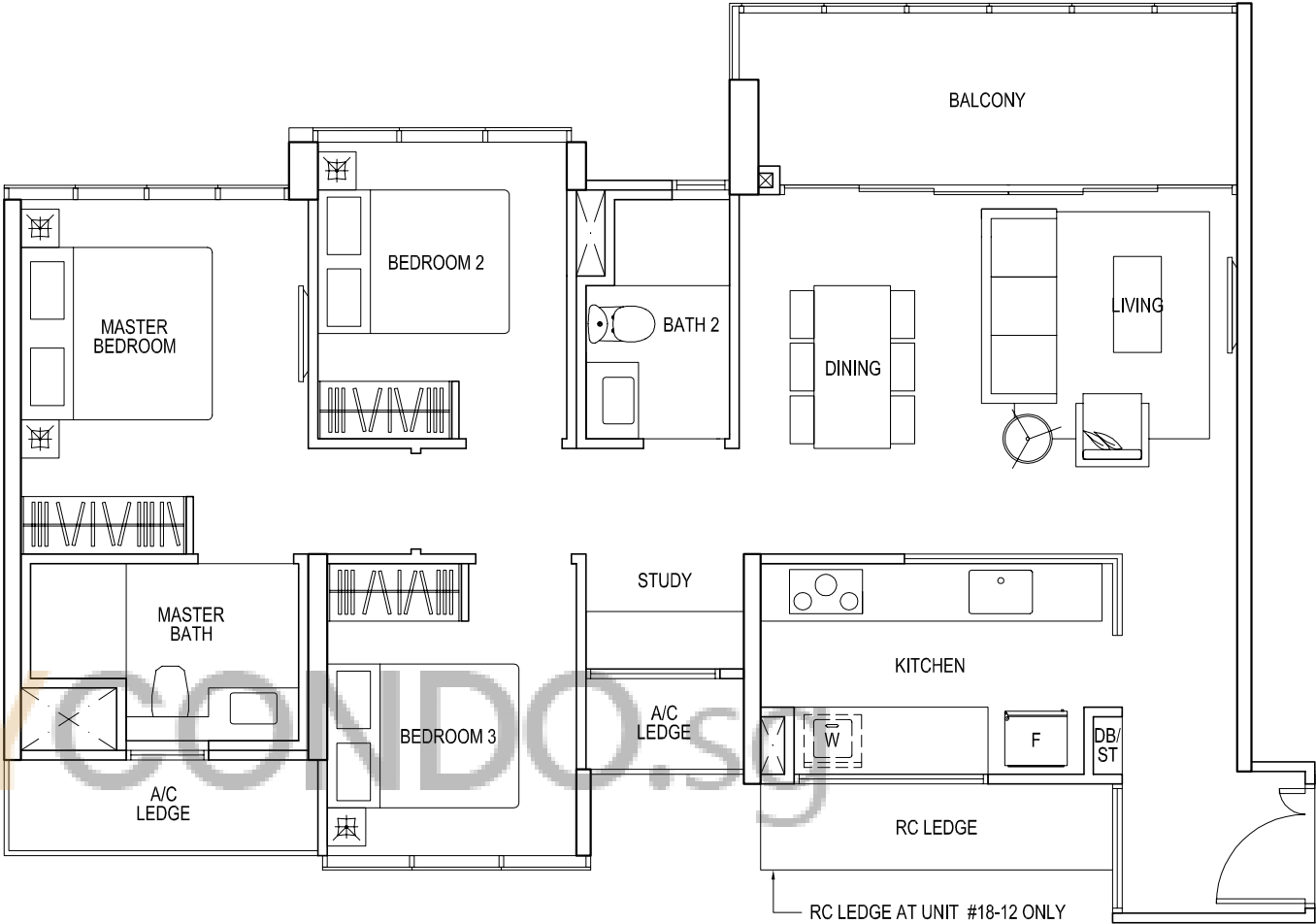
STRATA SFA : 71 sqm
#02-07, #01-16



3-BEDROOM

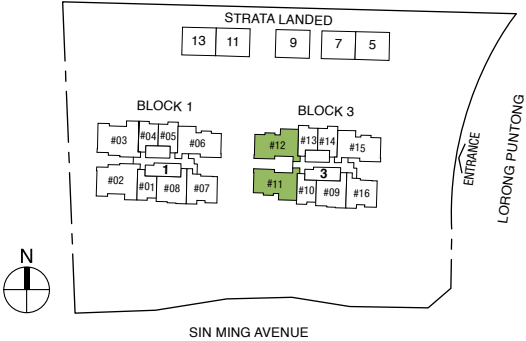
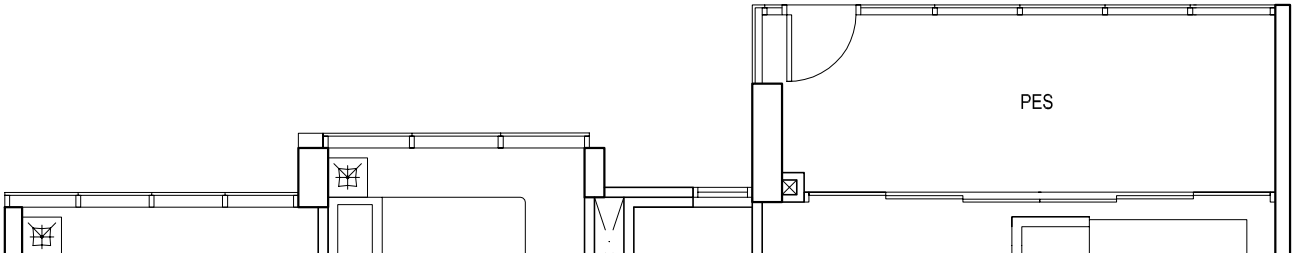
Type C1

STRATA SFA : 98 sqm
 #02-12 to #18-12,
 #02-11 to #19-11 (mirror)



Type C1G

STRATA SFA : 98 sqm
 #01-12, #01-11 (mirror)



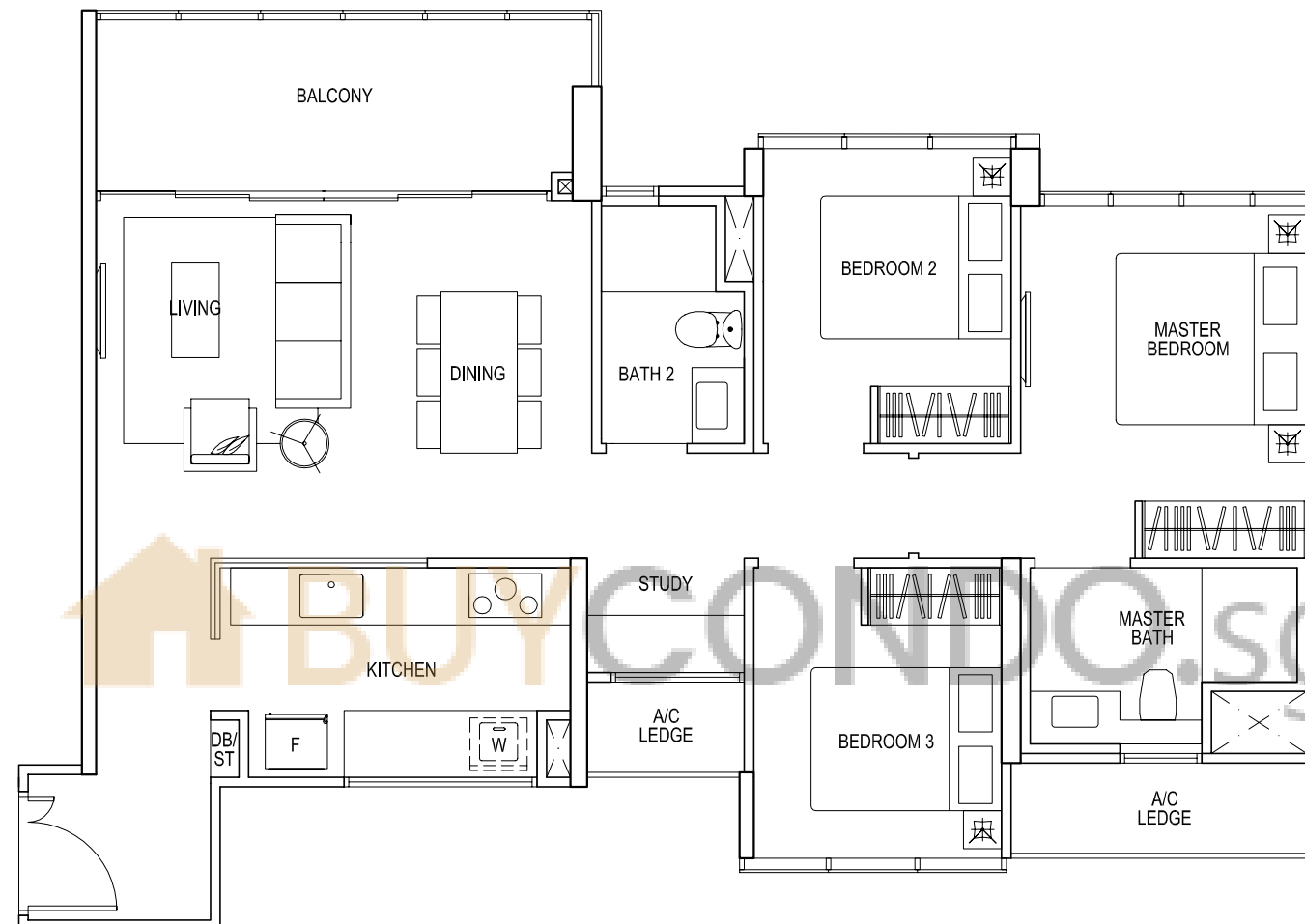
Area includes A/C ledge, balcony, pes and void (where applicable). The above plans and illustrations are subject to changes as may be required and approved by the relevant authorities. The balcony shall not be enclosed unless with the approved screen. For an illustration of the approved balcony screen, please refer to the diagram annexed hereto as "annexure 1".

Type C1a

STRATA SFA : 98 sqm

#03-06 to #18-06,

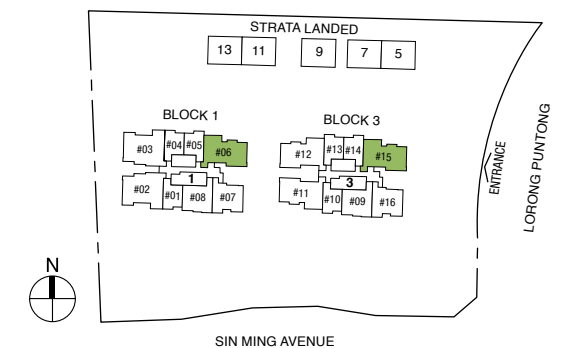
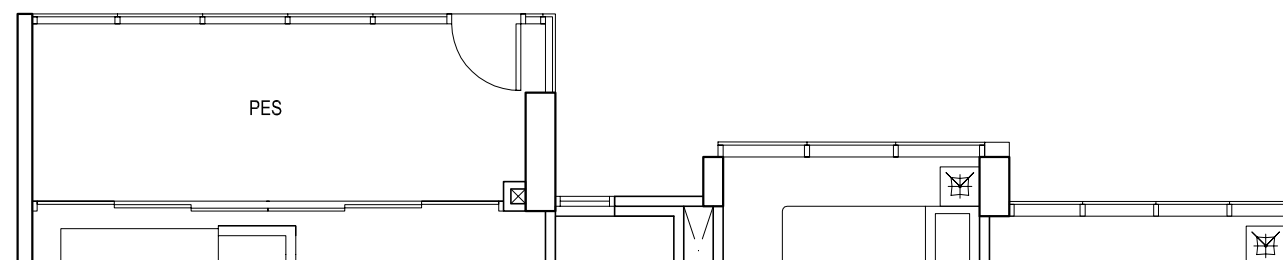
#02-15 to #18-15



Type C1aG

STRATA SFA : 98 sqm

#02-06, #01-15

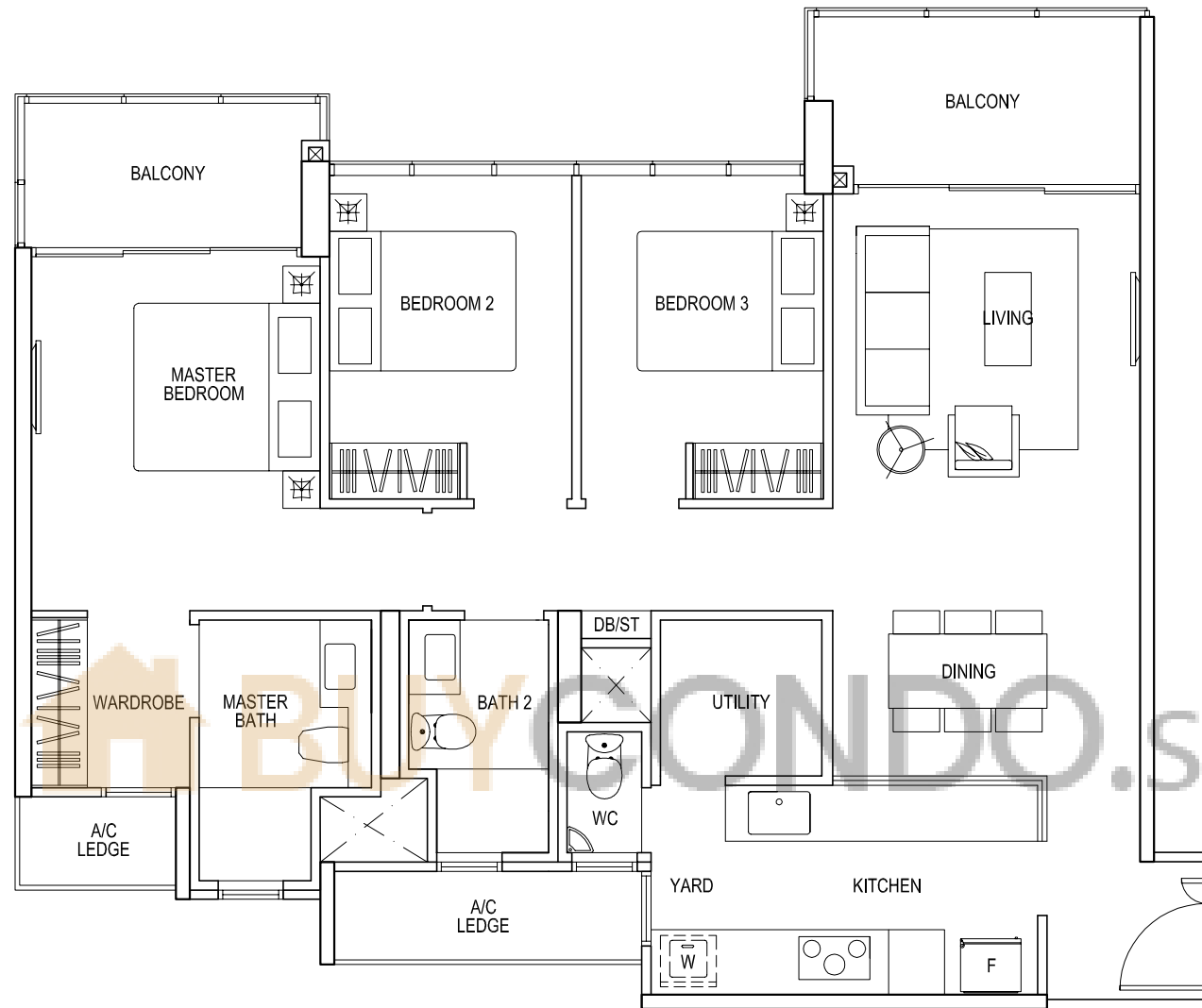




3-BEDROOM PREMIUM

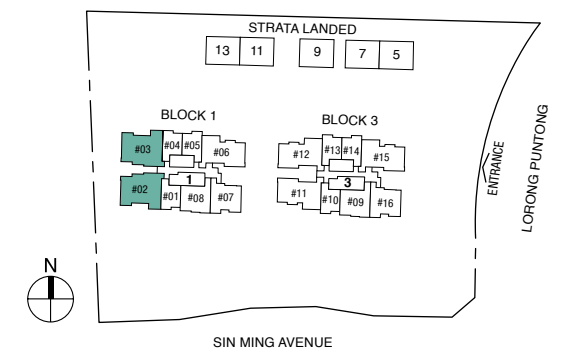
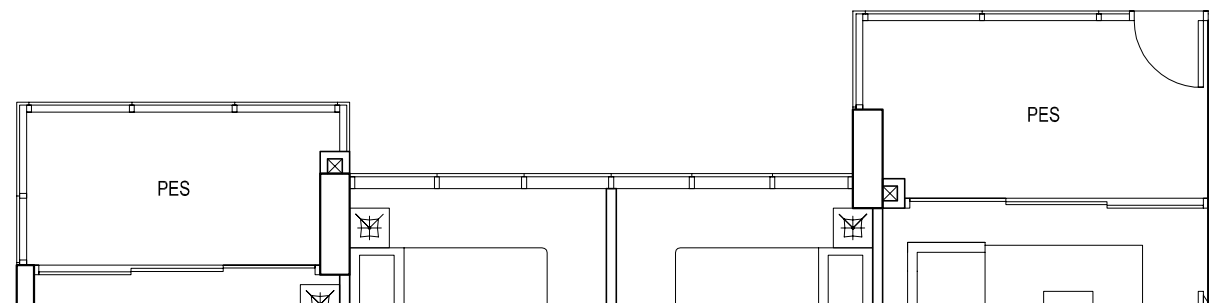
Type C2

STRATA SFA : 111 sqm
 #03-03 to #18-03,
 #03-02 to #18-02 (mirror)



Type C2G

STRATA SFA : 111 sqm
 #02-03, #02-02 (mirror)



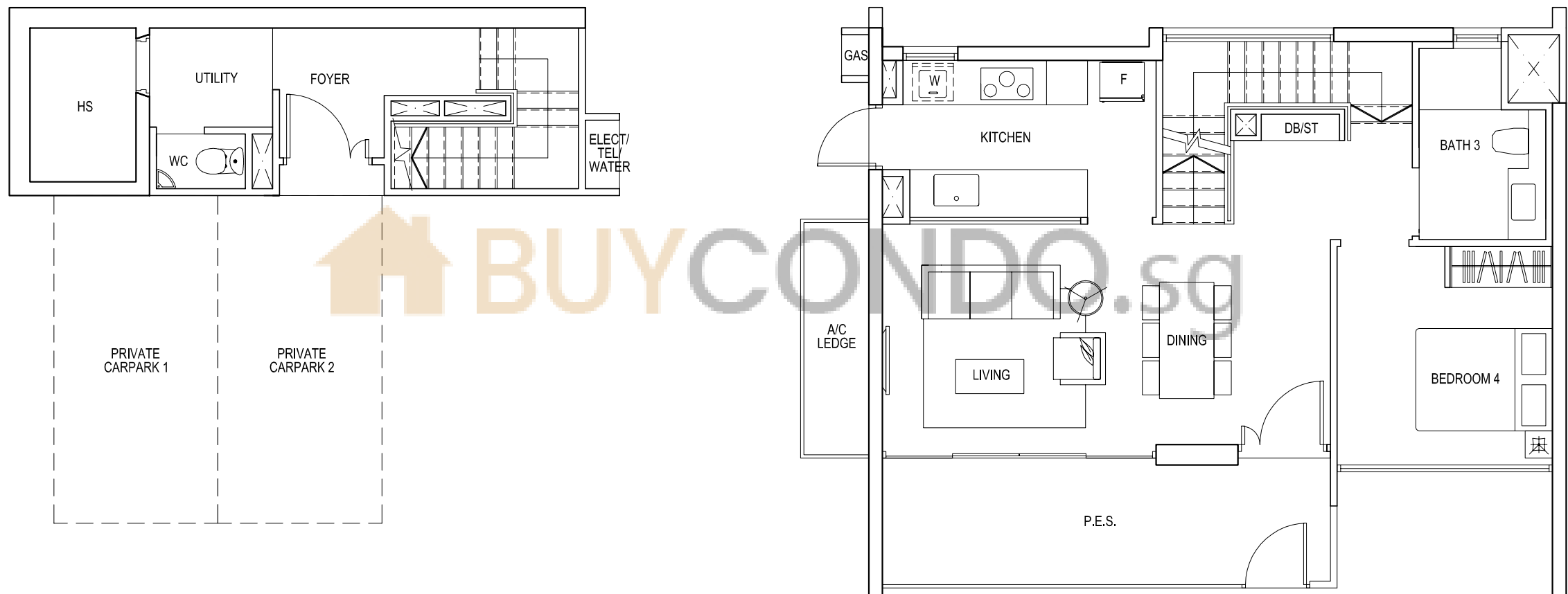
4-BEDROOM STRATA - LANDED

Type D1 SL

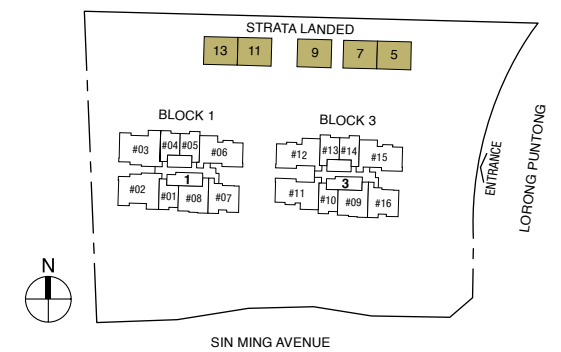
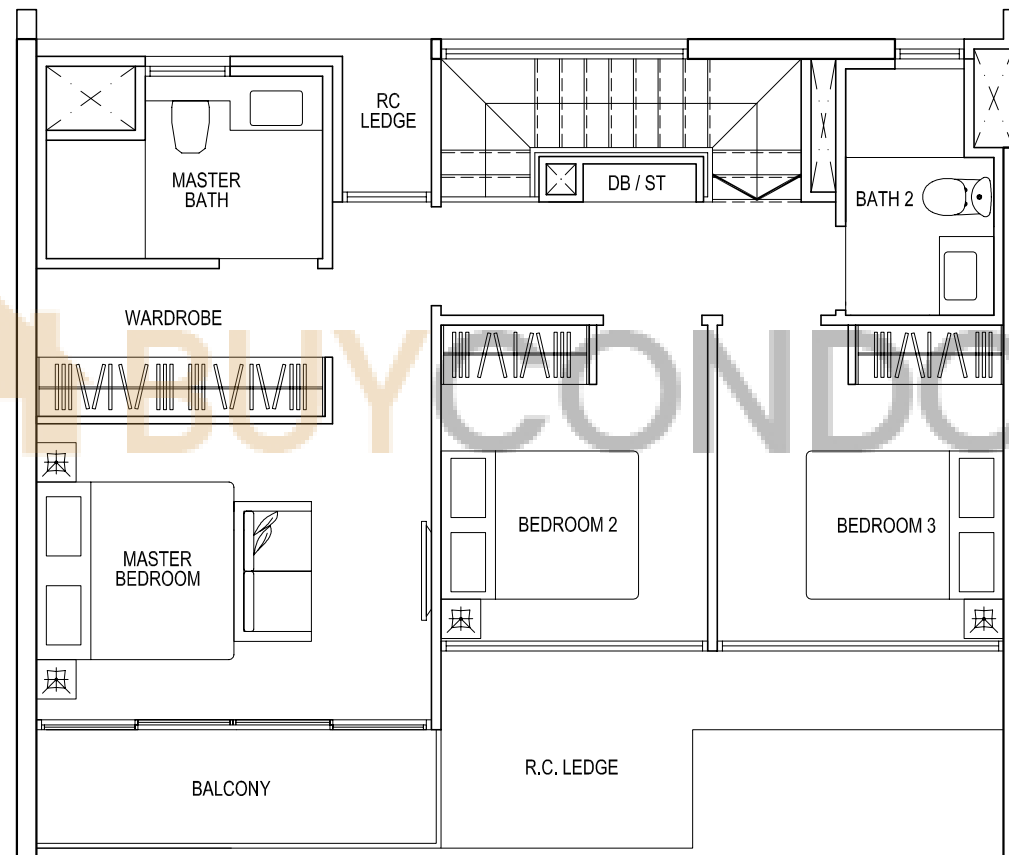
STRATA SFA : 189 sqm

No. 07, No. 13,

No. 05, No. 09, No. 11 (mirror)



4-BEDROOM STRATA - LANDED

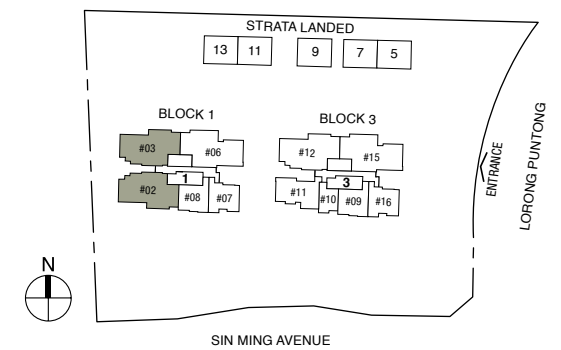
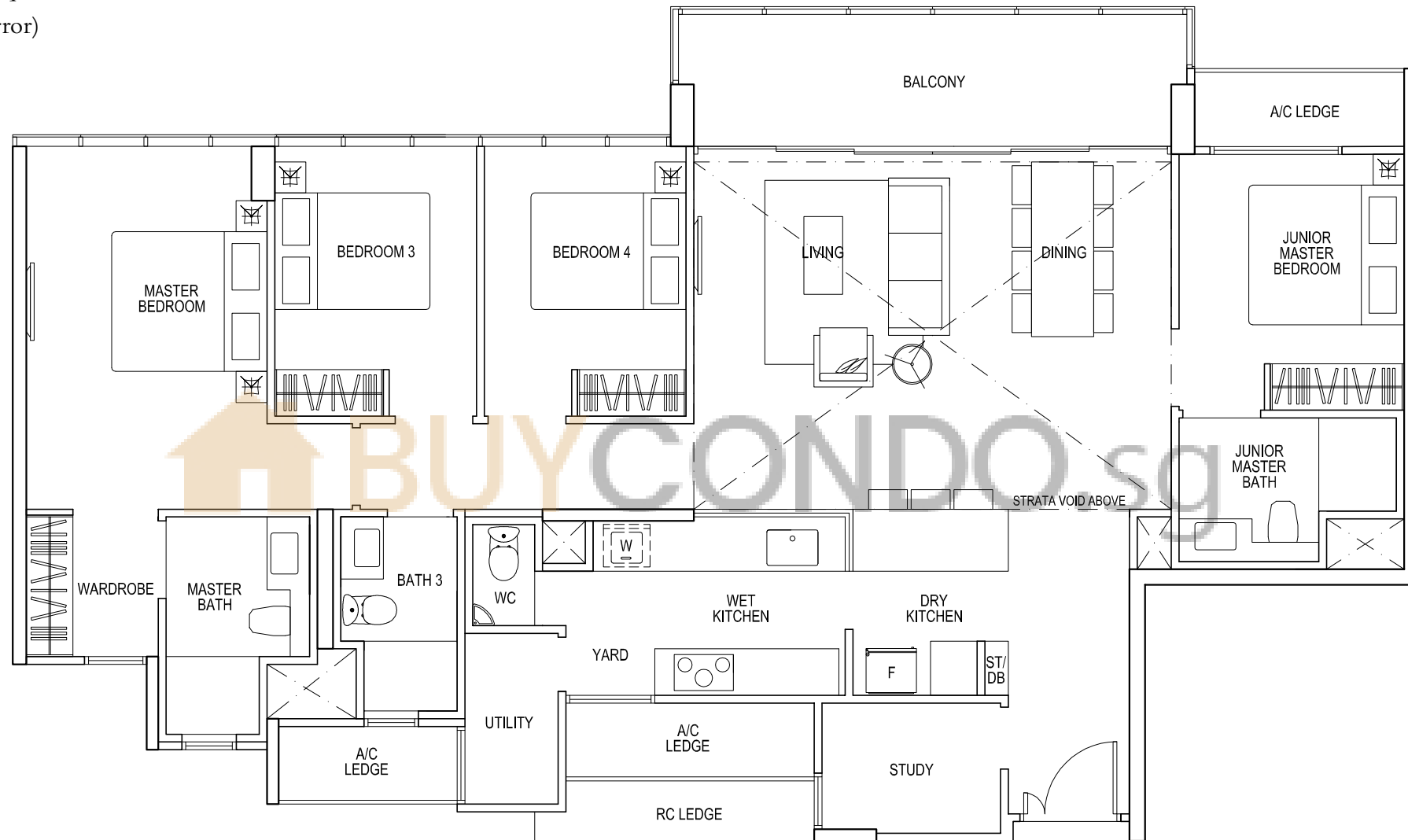




4-BEDROOM + STUDY PENTHOUSE

Type PH1

STRATA SFA : 176 sqm
#19-03, #19-02 (mirror)

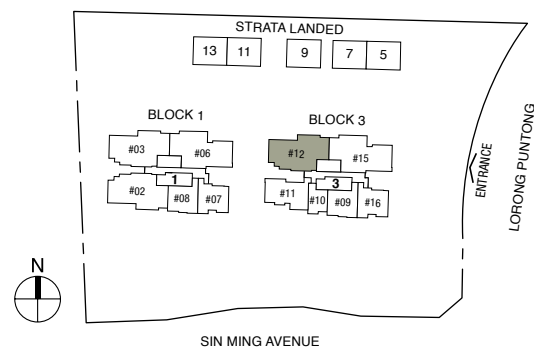
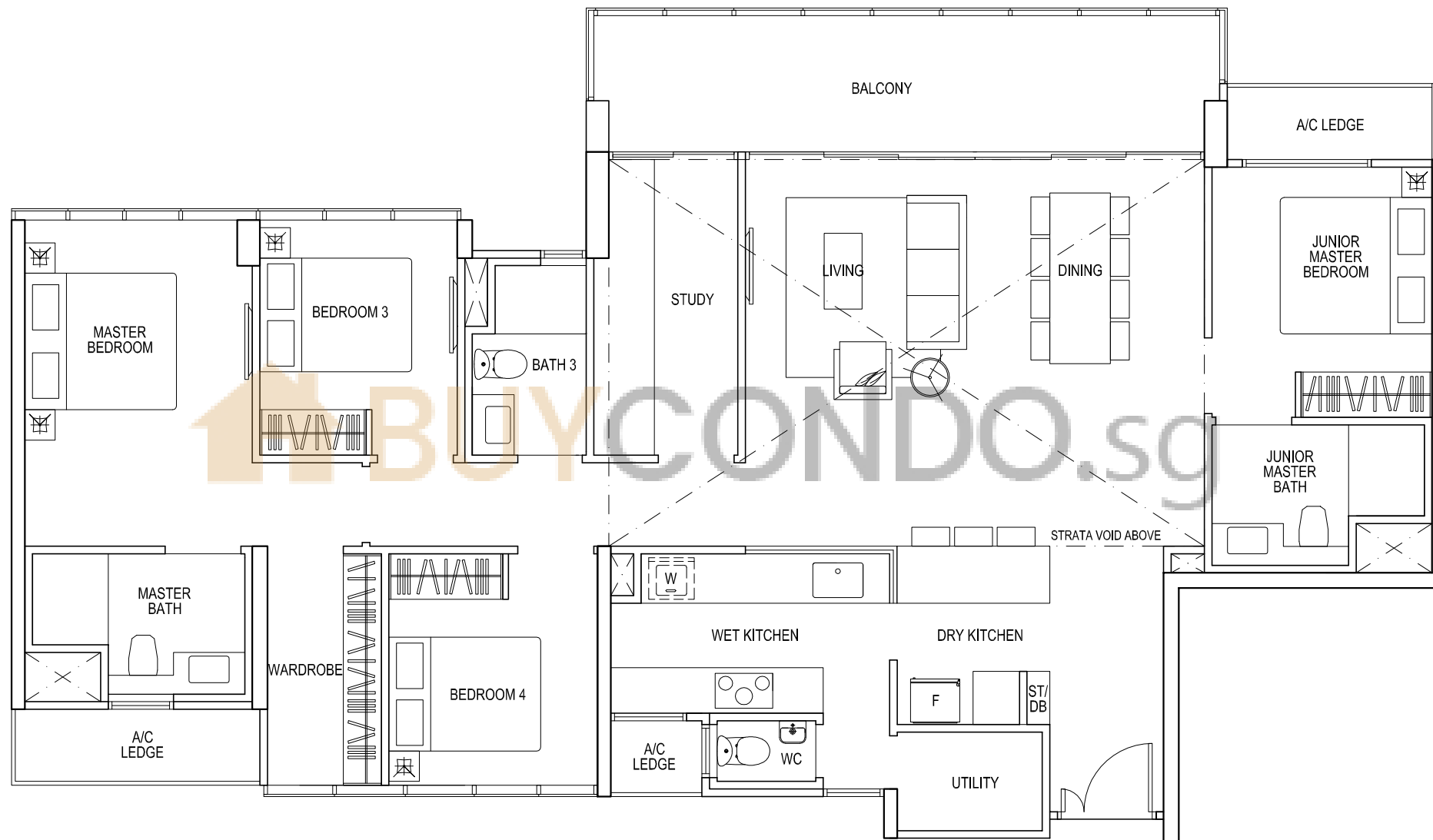


4-BEDROOM + STUDY PENTHOUSE

Type PH2

STRATA SFA : 197 sqm

#19-12



4-BEDROOM + STUDY PENTHOUSE

Type PH3

STRATA SFA : 197 sqm

#19-06, #19-15

