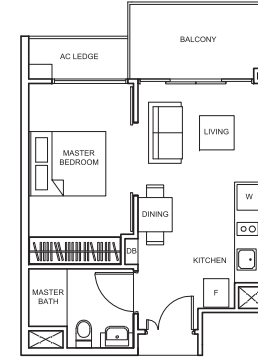


1 BEDROOM

SUITES

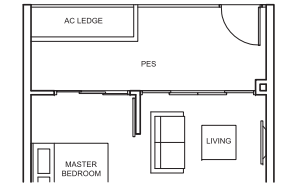
TYPE A1

42 sq m/ 452 sq ft
 #03-38 to #11-38, #03-40 to #11-40,
 #03-44 to #11-44, #03-46 to #11-46,
 #03-47 to #11-47



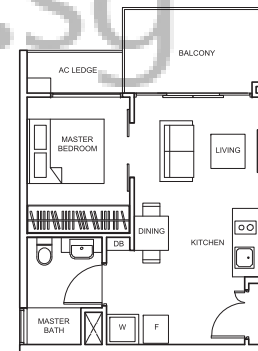
TYPE A1-P

45 sq m/ 484 sq ft
 #01-38, #01-40, #01-44,
 #01-46, #01-47



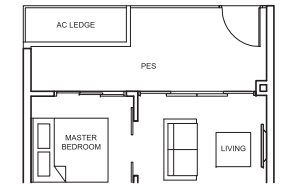
TYPE A2

43 sq m/ 463 sq ft
 #02-57 to #12-57



TYPE A2-P

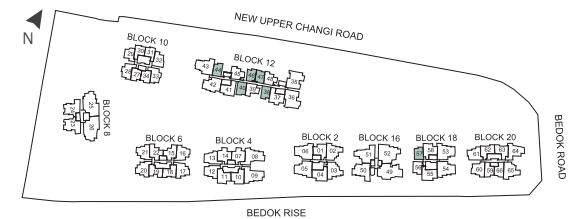
45 sq m/ 484 sq ft
 #01-57



SUITE

Live in comfort and style in a Suite, thoughtfully laid out to maximise capacity and functionality. Each of the 1- to 4-bedroom units is configured intelligently with bright, open spaces.

BUYCONDO.SG

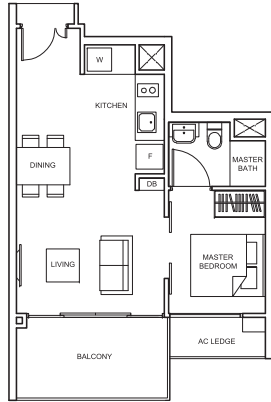


Balconies shall not be enclosed. Only approved screens are to be used.
 Area includes PES, A/C ledge, balcony, roof terrace and strata void, if any. Balconies and PES may not be fully covered. Some units are mirror images of the apartment plans shown in the brochure. Please refer to the key plans for orientation.
 All plans are not drawn to scale and are subject to changes pending approval by relevant authorities. All floor areas are approximate measurements only and are subject to final survey.

SUITES

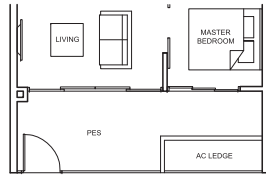
TYPE A3

47 sq m/ 506 sq ft
#02-59 to #11-59,
#02-66 to #11-66



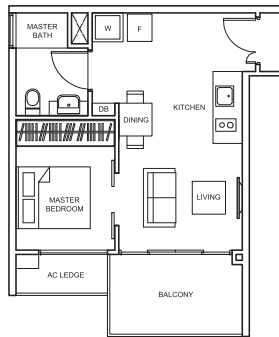
TYPE A3-P

50 sq m/ 538 sq ft
#01-59, #01-66



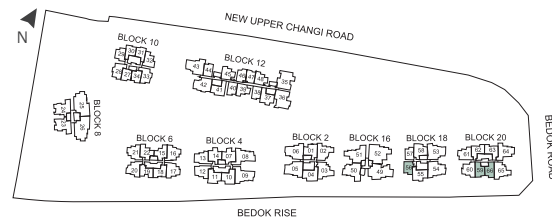
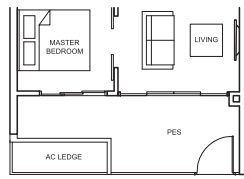
TYPE A4

44 sq m/ 474 sq ft
#02-56 to #12-56



TYPE A4-P

46 sq m/ 495 sq ft
#01-56



Balconies shall not be enclosed. Only approved screens are to be used.
Area includes PES, A/C ledge, balcony, roof terrace and strata void, if any. Balconies and PES may not be fully covered. Some units are mirror images of the apartment plans shown in the brochure. Please refer to the key plans for orientation.
All plans are not drawn to scale and are subject to changes pending approval by relevant authorities. All floor areas are approximate measurements only and are subject to final survey.

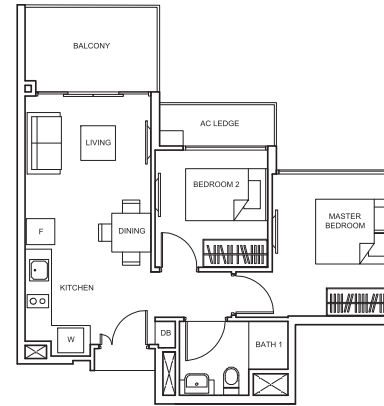
1 BEDROOM

2 BEDROOM

SUITES

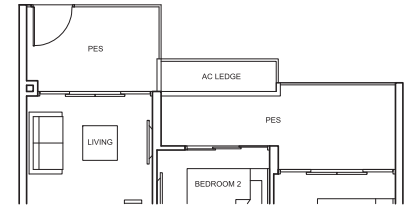
TYPE Bc1

54 sq m/ 581 sq ft
#02-15 to #12-15,
#02-22 to #12-22



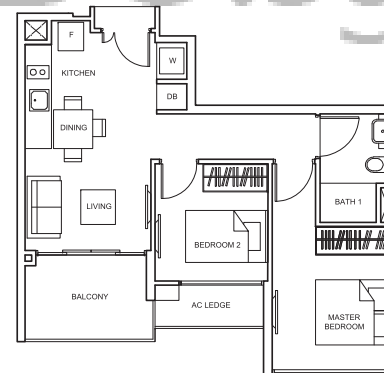
TYPE Bc1-P

62 sq m/ 667 sq ft
#01-15, #01-22



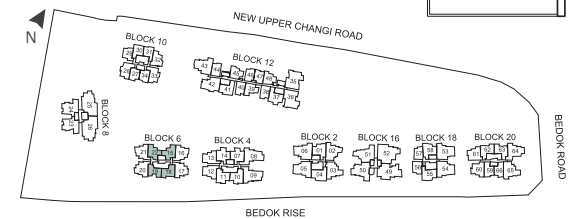
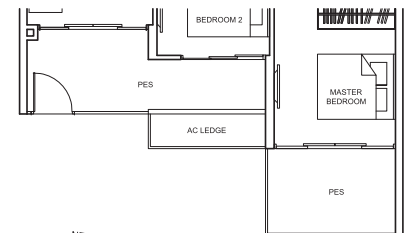
TYPE Bc2

55 sq m/ 592 sq ft
#02-18 to #12-18,
#02-19 to #12-19



TYPE Bc2-P

65 sq m/ 700 sq ft
#01-18, #01-19

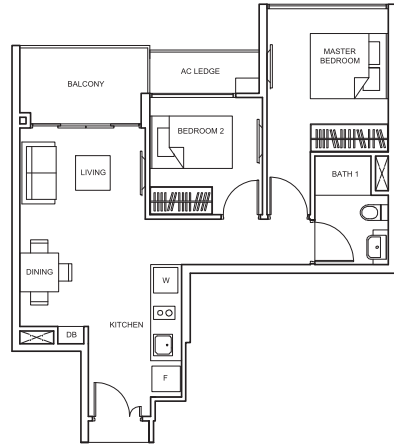


Balconies shall not be enclosed. Only approved screens are to be used.
Area includes PES, A/C ledge, balcony, roof terrace and strata void, if any. Balconies and PES may not be fully covered. Some units are mirror images of the apartment plans shown in the brochure. Please refer to the key plans for orientation.
All plans are not drawn to scale and are subject to changes pending approval by relevant authorities. All floor areas are approximate measurements only and are subject to final survey.

SUITES

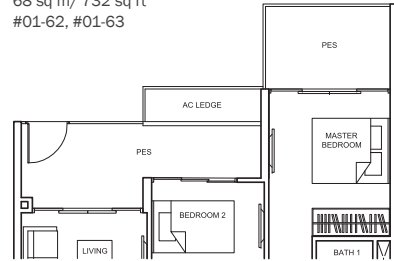
TYPE Bc3

58 sq m/ 624 sq ft
#02-62 to #12-62,
#02-63 to #12-63



TYPE Bc3-P

68 sq m/ 732 sq ft
#01-62, #01-63



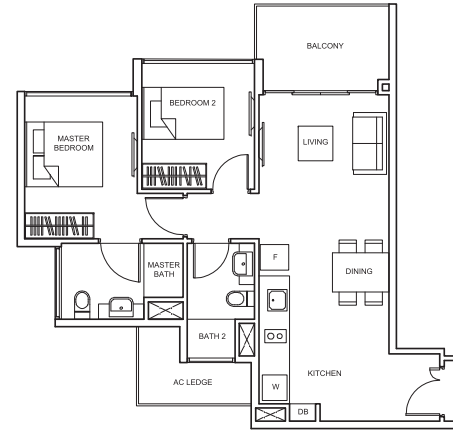
2 BEDROOM

2 BEDROOM

SUITES

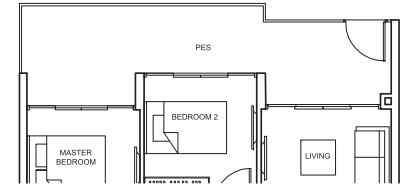
TYPE B1

67 sq m/ 721 sq ft
#02-16 to #12-16, #02-17 to #12-17,
#02-20 to #12-20, #02-21 to #12-21



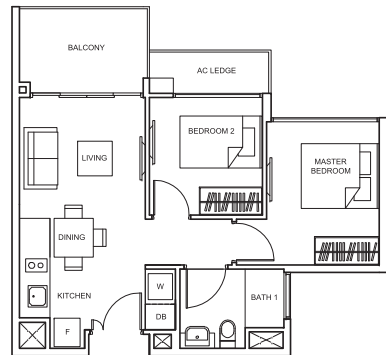
TYPE B1-P

78 sq m/ 840 sq ft
#01-16, #01-17, #01-20, #01-21



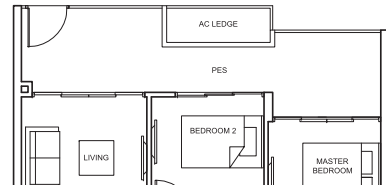
TYPE Bc4

53 sq m/ 570 sq ft
#03-39 to #11-39, #03-45 to #11-45,
#03-48 to #11-48



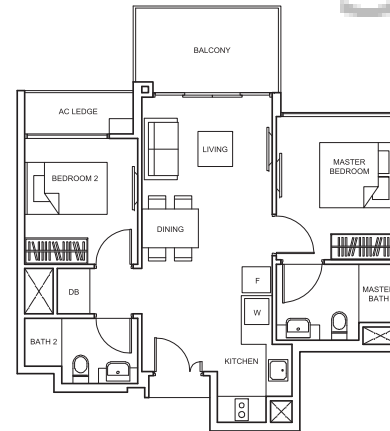
TYPE Bc4-P

61 sq m/ 657 sq ft
#01-39, #01-45, #01-48



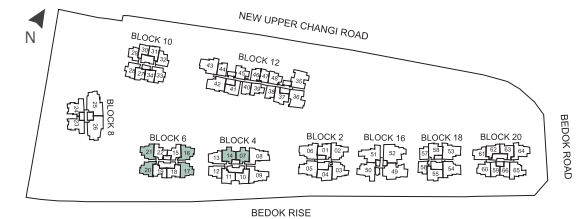
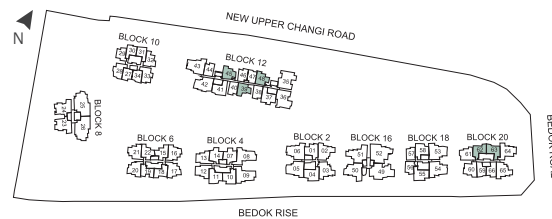
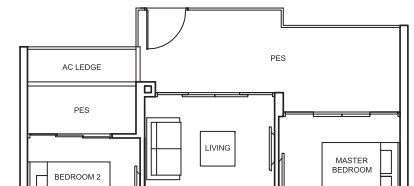
TYPE B2

63 sq m/ 678 sq ft
#02-07 to #09-07,
#02-14 to #09-14



TYPE B2-P

71 sq m/ 764 sq ft
#01-07, #01-14



Balconies shall not be enclosed. Only approved screens are to be used.
Area includes PES, A/C ledge, balcony, roof terrace and strata void, if any. Balconies and PES may not be fully covered. Some units are mirror images of the apartment plans shown in the brochure. Please refer to the key plans for orientation.
All plans are not drawn to scale and are subject to changes pending approval by relevant authorities. All floor areas are approximate measurements only and are subject to final survey.

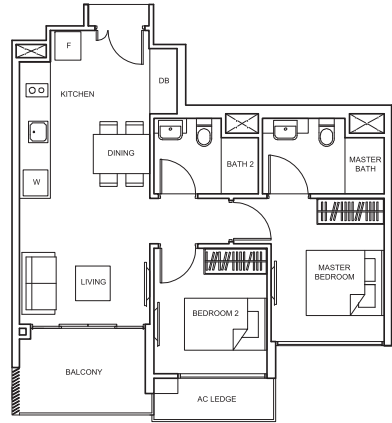
Balconies shall not be enclosed. Only approved screens are to be used.
Area includes PES, A/C ledge, balcony, roof terrace and strata void, if any. Balconies and PES may not be fully covered. Some units are mirror images of the apartment plans shown in the brochure. Please refer to the key plans for orientation.
All plans are not drawn to scale and are subject to changes pending approval by relevant authorities. All floor areas are approximate measurements only and are subject to final survey.

SUITES

2 BEDROOM

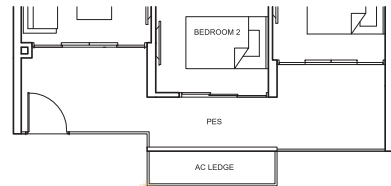
TYPE B3

63 sq m/ 678 sq ft
#02-10 to #09-10,
#02-11 to #09-11



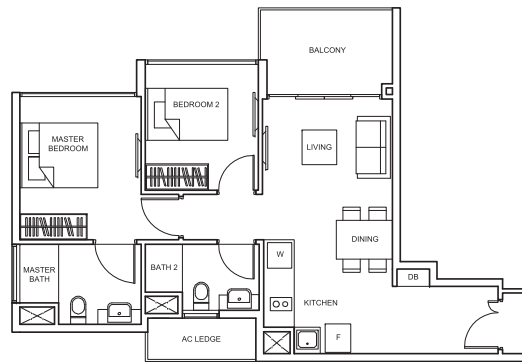
TYPE B3-P

71 sq m/ 764 sq ft
#01-10, #01-11



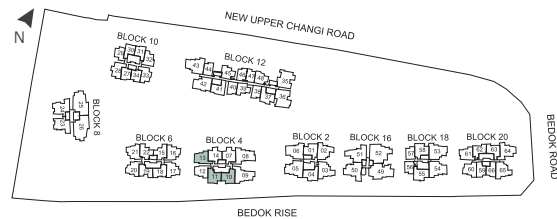
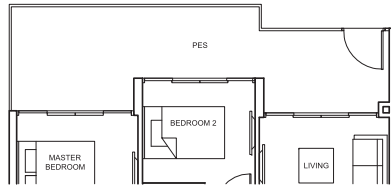
TYPE B4

64 sq m/ 689 sq ft
#02-13 to #09-13



TYPE B4-P

76 sq m/ 818 sq ft
#01-13



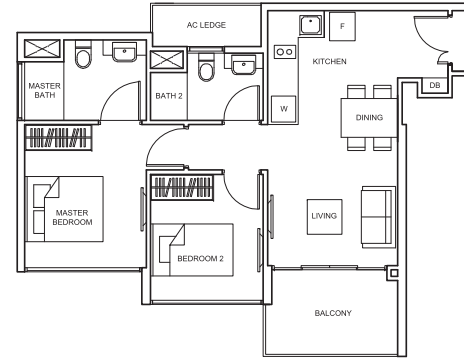
Balconies shall not be enclosed. Only approved screens are to be used.
Area includes PES, A/C ledge, balcony, roof terrace and strata void, if any. Balconies and PES may not be fully covered. Some units are mirror images of the apartment plans shown in the brochure. Please refer to the key plans for orientation.
All plans are not drawn to scale and are subject to changes pending approval by relevant authorities. All floor areas are approximate measurements only and are subject to final survey.

SUITES

2 BEDROOM

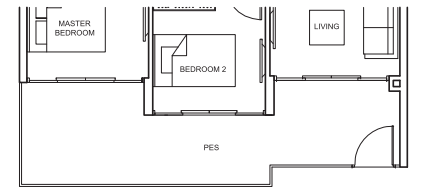
TYPE B5

62 sq m/ 667 sq ft
#02-12 to #09-12



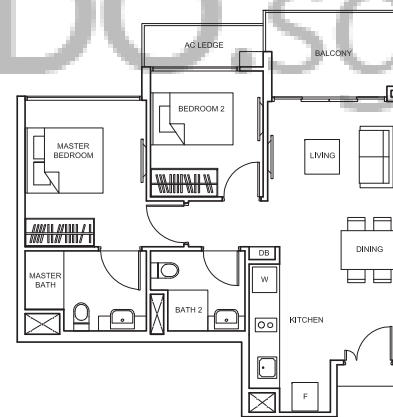
TYPE B5-P

74 sq m/ 797 sq ft
#01-12



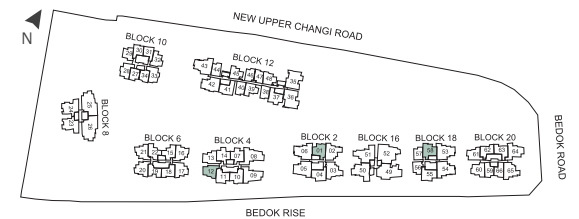
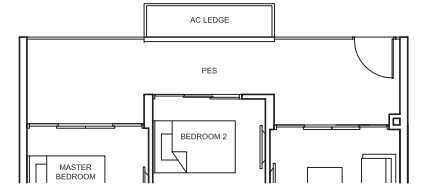
TYPE B6

64 sq m/ 689 sq ft
#02-01 to #09-01,
#02-58 to #12-58



TYPE B6-P

73 sq m/ 786 sq ft
#01-01, #01-58

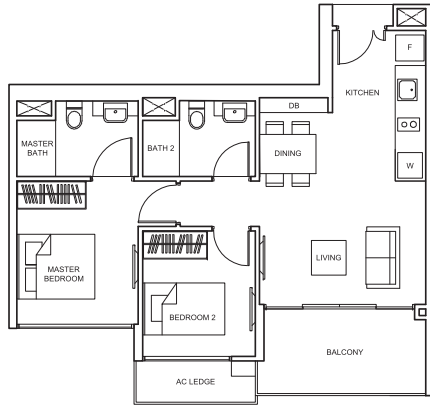


Balconies shall not be enclosed. Only approved screens are to be used.
Area includes PES, A/C ledge, balcony, roof terrace and strata void, if any. Balconies and PES may not be fully covered. Some units are mirror images of the apartment plans shown in the brochure. Please refer to the key plans for orientation.
All plans are not drawn to scale and are subject to changes pending approval by relevant authorities. All floor areas are approximate measurements only and are subject to final survey.

SUITES

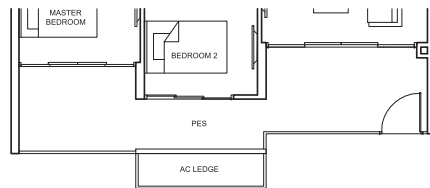
TYPE B7

67 sq m/ 721 sq ft
#02-04 to #09-04,
#02-55 to #12-55



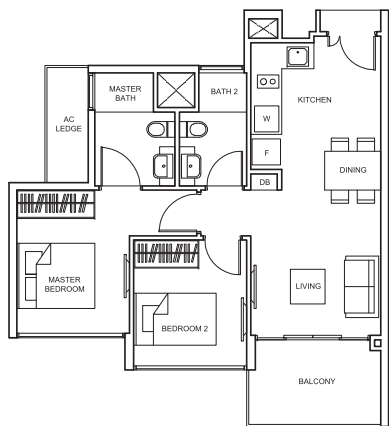
TYPE B7-P

76 sq m/ 818 sq ft
#01-04, #01-55



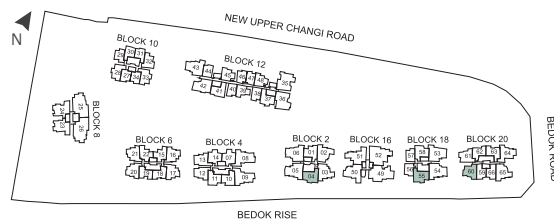
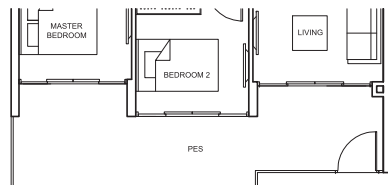
TYPE B8

62 sq m/ 667 sq ft
#02-60 to #11-60



TYPE B8-P

73 sq m/ 786 sq ft
#01-60



Balconies shall not be enclosed. Only approved screens are to be used.
Area includes PES, A/C ledge, balcony, roof terrace and strata void, if any. Balconies and PES may not be fully covered. Some units are mirror images of the apartment plans shown in the brochure. Please refer to the key plans for orientation.
All plans are not drawn to scale and are subject to changes pending approval by relevant authorities. All floor areas are approximate measurements only and are subject to final survey.

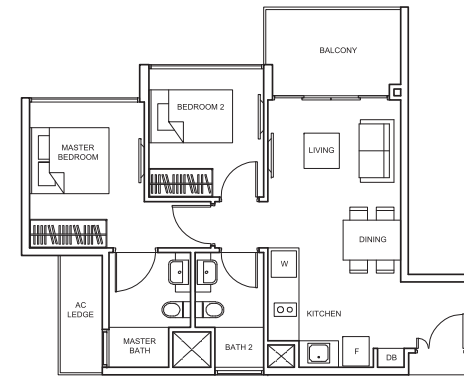
2 BEDROOM

2 BEDROOM

SUITES

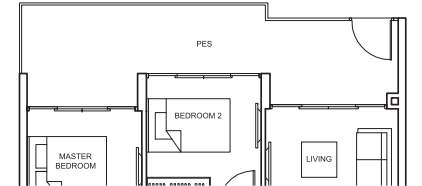
TYPE B9

62 sq m/ 667 sq ft
#02-61 to #11-61



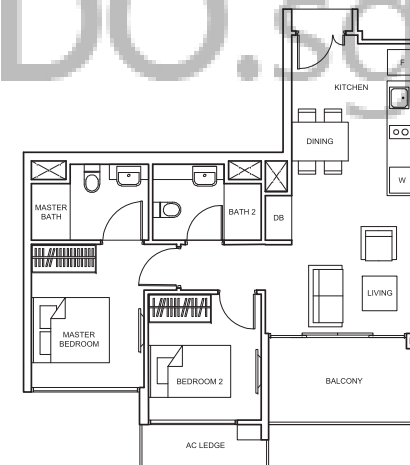
TYPE B9-P

73 sq m/ 786 sq ft
#01-61



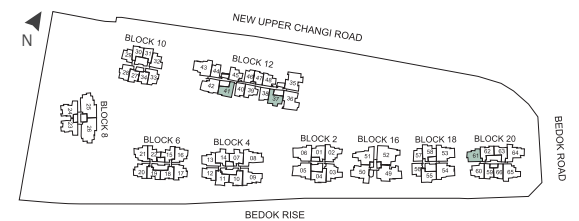
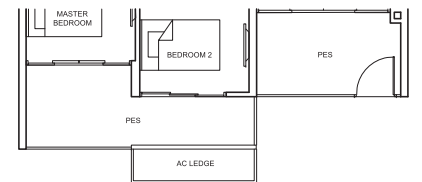
TYPE B10

65 sq m/ 700 sq ft
#03-37 to #12-37, #03-41 to #12-41



TYPE B10-P

74 sq m/ 797 sq ft
#01-37, #01-41



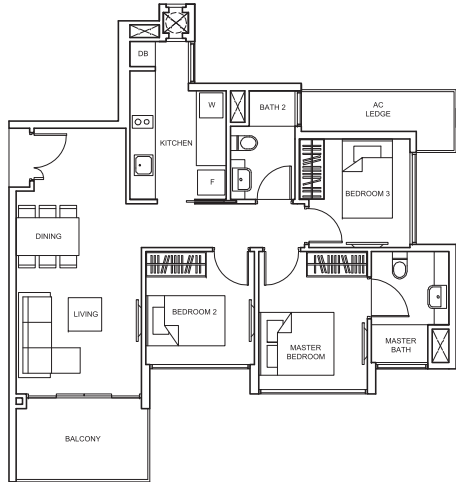
Balconies shall not be enclosed. Only approved screens are to be used.
Area includes PES, A/C ledge, balcony, roof terrace and strata void, if any. Balconies and PES may not be fully covered. Some units are mirror images of the apartment plans shown in the brochure. Please refer to the key plans for orientation.
All plans are not drawn to scale and are subject to changes pending approval by relevant authorities. All floor areas are approximate measurements only and are subject to final survey.

SUITES

3 BEDROOM

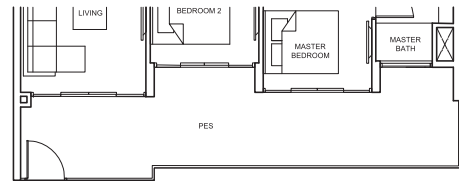
TYPE Cc1

78 sq m/ 840 sq ft
#02-23 to #11-23, #02-24 to #11-24



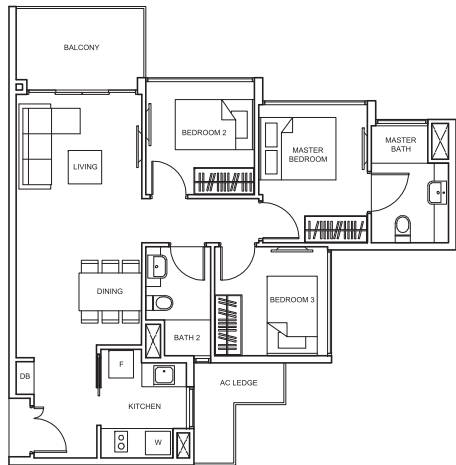
TYPE Cc1-P

94 sq m/ 1,012 sq ft
#01-23, #01-24



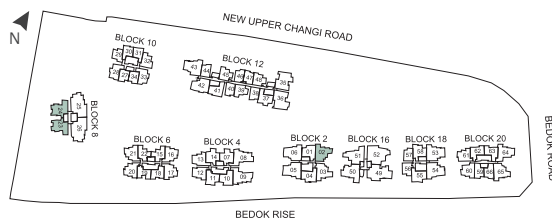
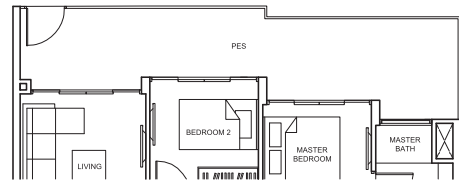
TYPE Cc2

78 sq m/ 840 sq ft
#02-02 to #09-02



TYPE Cc2-P

93 sq m/ 1,001 sq ft
#01-02



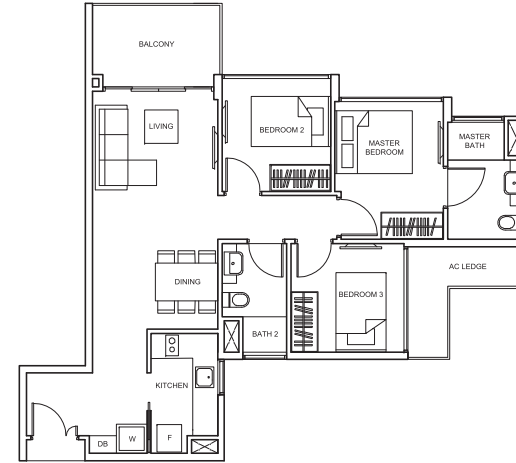
Balconies shall not be enclosed. Only approved screens are to be used.
Area includes PES, A/C ledge, balcony, roof terrace and strata void, if any. Balconies and PES may not be fully covered. Some units are mirror images of the apartment plans shown in the brochure. Please refer to the key plans for orientation.
All plans are not drawn to scale and are subject to changes pending approval by relevant authorities. All floor areas are approximate measurements only and are subject to final survey.

3 BEDROOM

SUITES

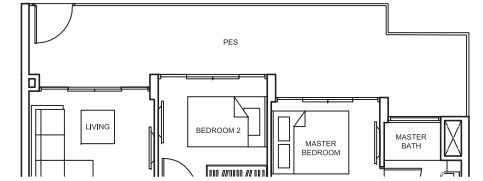
TYPE Cc3

80 sq m/ 861 sq ft
#02-64 to #11-64



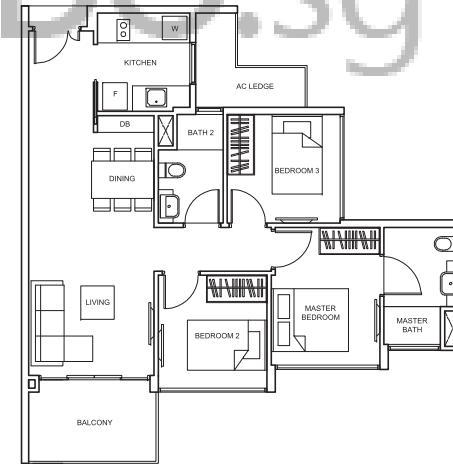
TYPE Cc3-P

95 sq m/ 1,023 sq ft
#01-64



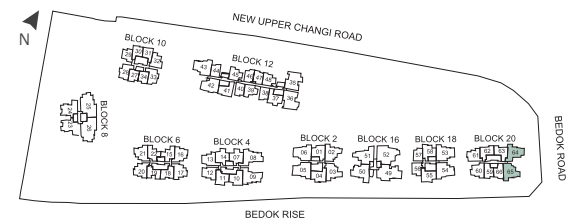
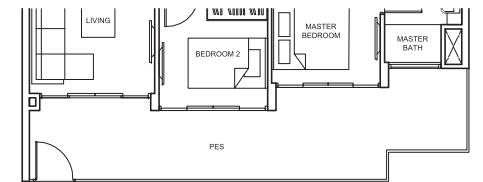
TYPE Cc4

78 sq m/ 840 sq ft
#02-65 to #11-65



TYPE Cc4-P

93 sq m/ 1,001 sq ft
#01-65

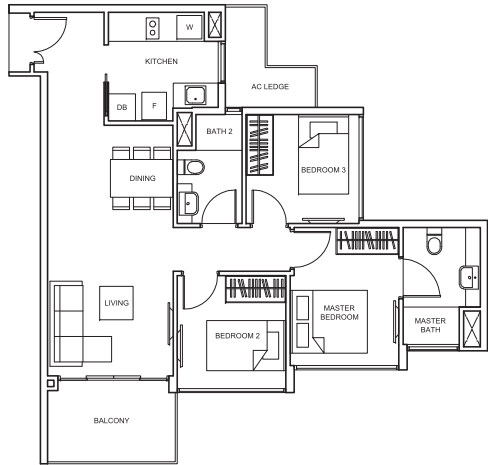


Balconies shall not be enclosed. Only approved screens are to be used.
Area includes PES, A/C ledge, balcony, roof terrace and strata void, if any. Balconies and PES may not be fully covered. Some units are mirror images of the apartment plans shown in the brochure. Please refer to the key plans for orientation.
All plans are not drawn to scale and are subject to changes pending approval by relevant authorities. All floor areas are approximate measurements only and are subject to final survey.

SUITES

TYPE Cc5

79 sq m/ 850 sq ft
#02-03 to #09-03



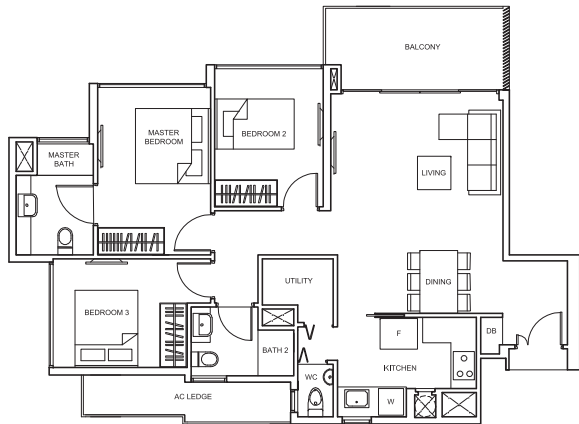
TYPE Cc5-P

94 sq m/ 1,012 sq ft
#01-03



TYPE C1

99 sq m/ 1,066 sq ft
#02-25, #04-25, #06-25, #08-25, #10-25,
#02-26, #04-26, #06-26, #08-26, #10-26



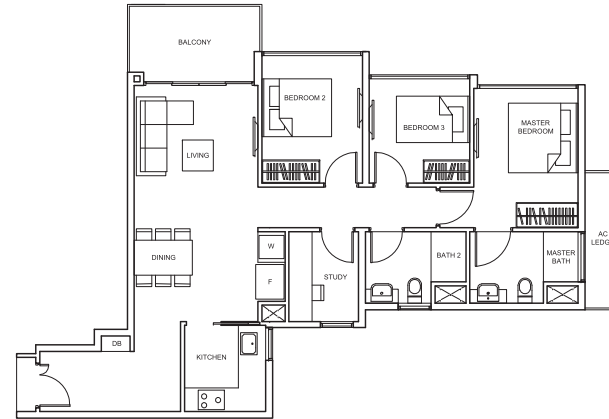
3 BEDROOM



3 BEDROOM

TYPE C2

96 sq m/ 1,033 sq ft
#02-08 to #08-08



TYPE C3

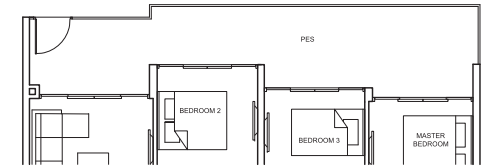
92 sq m/ 990 sq ft to 93 sq m/ 1,001 sq ft
#02-05 to #08-05, #02-06 to #08-06,
#03-42 to #10-42, #03-43 to #10-43,
#02-53 to #10-53, #02-54 to #10-54



SUITES

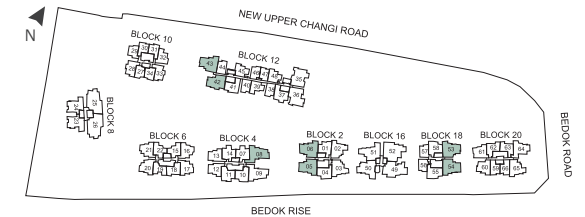
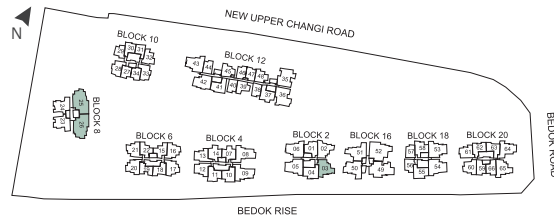
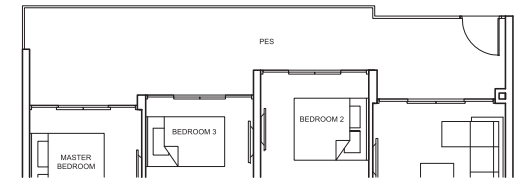
TYPE C2-P

113 sq m/ 1,216 sq ft
#01-08



TYPE C3-P

110 sq m/ 1,184 sq ft
#01-05, #01-06, #01-42,
#01-43, #01-53, #01-54



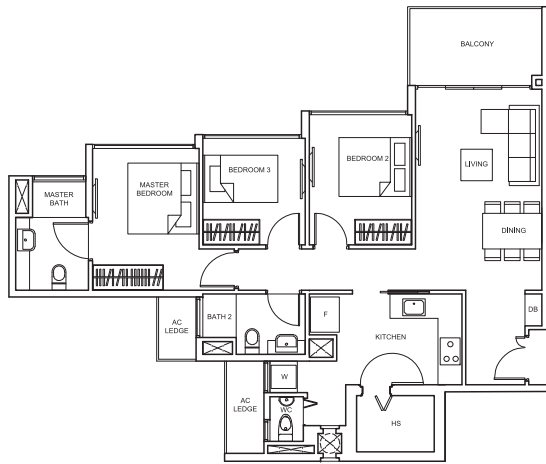
Balconies shall not be enclosed. Only approved screens are to be used.
Area includes PES, A/C ledge, balcony, roof terrace and strata void, if any. Balconies and PES may not be fully covered. Some units are mirror images of the apartment plans shown in the brochure. Please refer to the key plans for orientation.
All plans are not drawn to scale and are subject to changes pending approval by relevant authorities. All floor areas are approximate measurements only and are subject to final survey.

Balconies shall not be enclosed. Only approved screens are to be used.
Area includes PES, A/C ledge, balcony, roof terrace and strata void, if any. Balconies and PES may not be fully covered. Some units are mirror images of the apartment plans shown in the brochure. Please refer to the key plans for orientation.
All plans are not drawn to scale and are subject to changes pending approval by relevant authorities. All floor areas are approximate measurements only and are subject to final survey.

SUITES

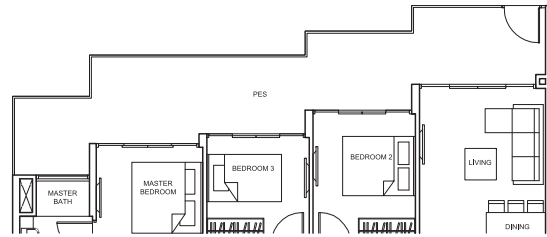
TYPE C4

94 sq m/ 1,012 sq ft
#02-51 to #10-51



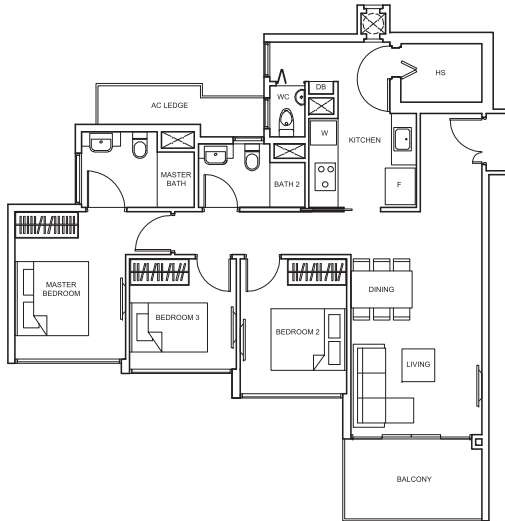
TYPE C4-P

116 sq m/ 1,249 sq ft
#01-51



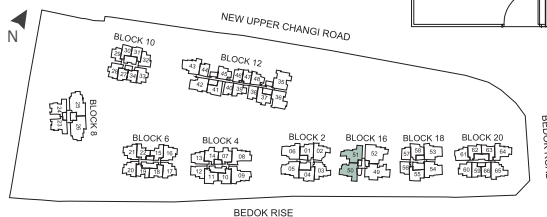
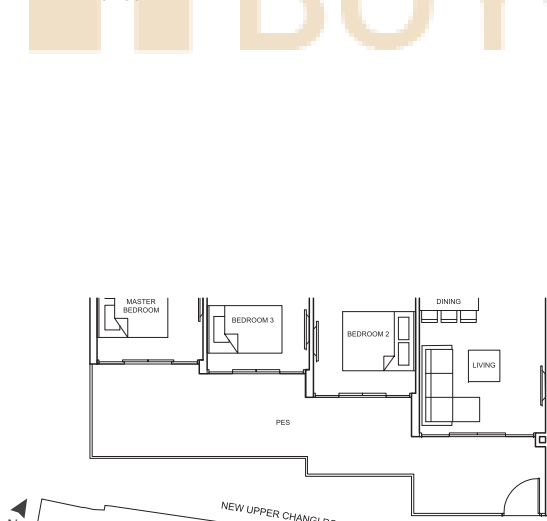
TYPE C5

95 sq m/ 1,023 sq ft
#02-50 to #10-50



TYPE C5-P

113 sq m/ 1,216 sq ft
#01-50



Balconies shall not be enclosed. Only approved screens are to be used.
Area includes PES, A/C ledge, balcony, roof terrace and strata void, if any. Balconies and PES may not be fully covered. Some units are mirror images of the apartment plans shown in the brochure. Please refer to the key plans for orientation.
All plans are not drawn to scale and are subject to changes pending approval by relevant authorities. All floor areas are approximate measurements only and are subject to final survey.

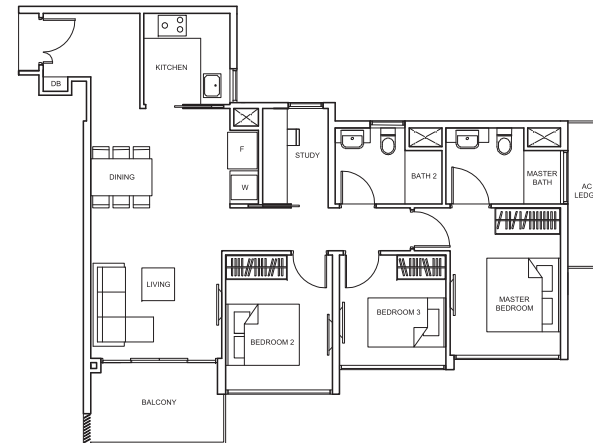
3 BEDROOM

3 BEDROOM

SUITES

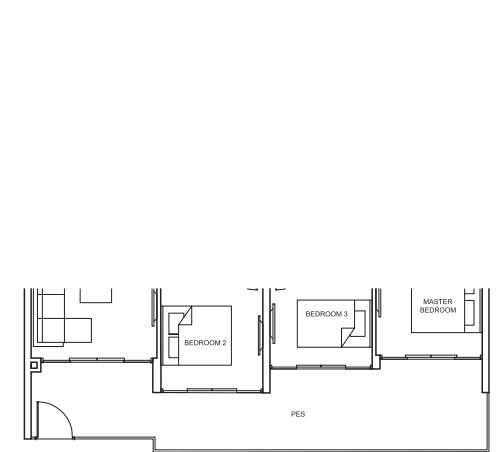
TYPE C6

93 sq m/ 1,001 sq ft
#02-09 to #08-09



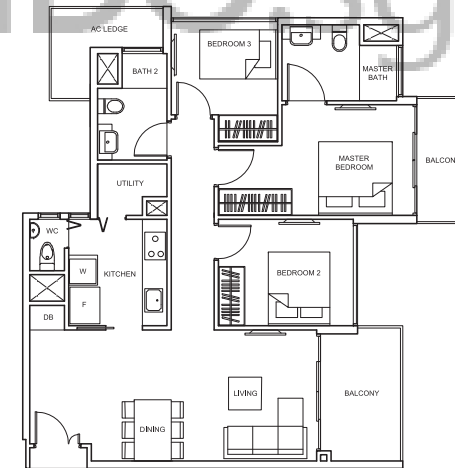
TYPE C6-P

111 sq m/ 1,195 sq ft
#01-09



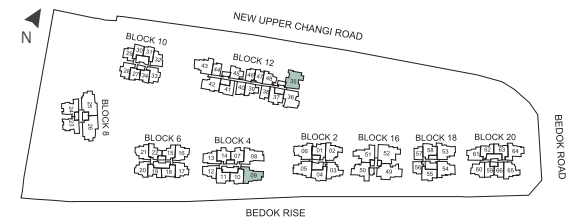
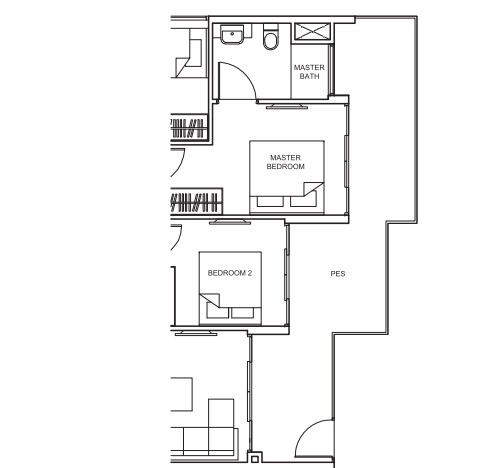
TYPE C7

95 sq m/ 1,023 sq ft
#03-35 to #10-35



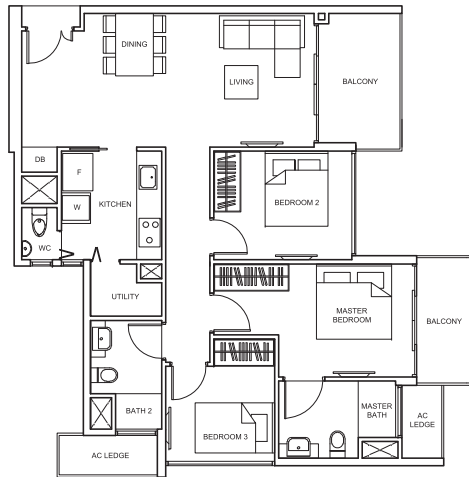
TYPE C7-P

107 sq m/ 1,152 sq ft
#01-35

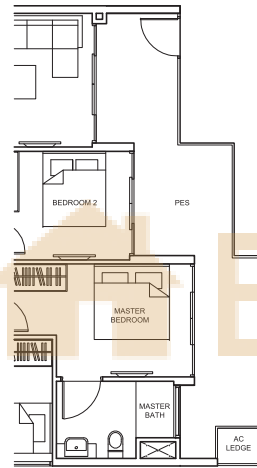


Balconies shall not be enclosed. Only approved screens are to be used.
Area includes PES, A/C ledge, balcony, roof terrace and strata void, if any. Balconies and PES may not be fully covered. Some units are mirror images of the apartment plans shown in the brochure. Please refer to the key plans for orientation.
All plans are not drawn to scale and are subject to changes pending approval by relevant authorities. All floor areas are approximate measurements only and are subject to final survey.

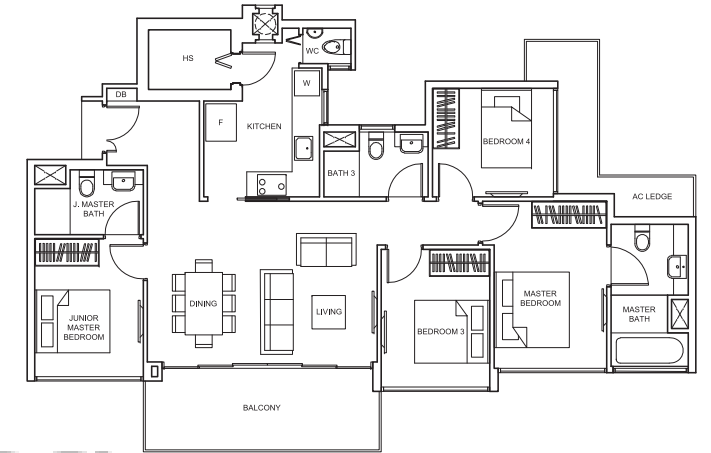
TYPE C8
95 sq m/ 1,023 sq ft
#03-36 to #10-36



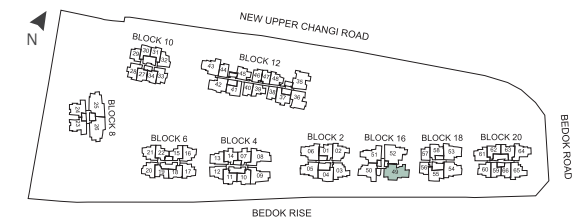
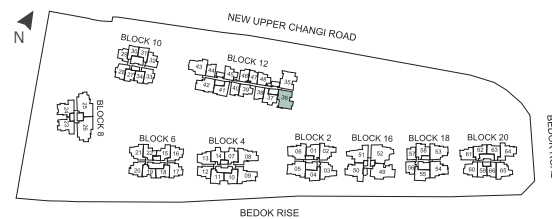
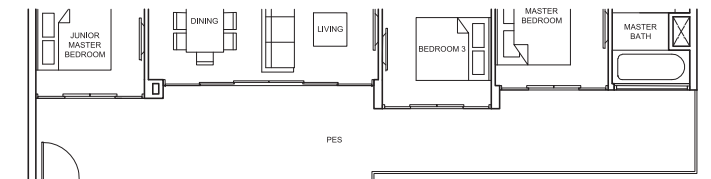
TYPE C8-P
105 sq m/ 1,130 sq ft
#01-36



TYPE D2
119 sq m/ 1,281 sq ft
#02-49 to #10-49



TYPE D2-P
140 sq m/ 1,507 sq ft
#01-49



Balconies shall not be enclosed. Only approved screens are to be used.
Area includes PES, A/C ledge, balcony, roof terrace and strata void, if any. Balconies and PES may not be fully covered. Some units are mirror images of the apartment plans shown in the brochure. Please refer to the key plans for orientation.
All plans are not drawn to scale and are subject to changes pending approval by relevant authorities. All floor areas are approximate measurements only and are subject to final survey.

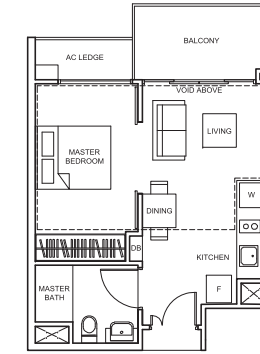
Balconies shall not be enclosed. Only approved screens are to be used.
Area includes PES, A/C ledge, balcony, roof terrace and strata void, if any. Balconies and PES may not be fully covered. Some units are mirror images of the apartment plans shown in the brochure. Please refer to the key plans for orientation.
All plans are not drawn to scale and are subject to changes pending approval by relevant authorities. All floor areas are approximate measurements only and are subject to final survey.

LOFT

Live the sky-high life in these deluxe units offering chic gallery-style spaces. Choose from 1- to 4-bedroom Lofts with double-volume living rooms.

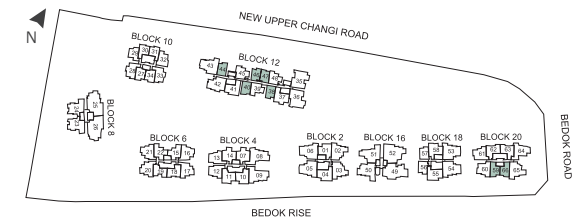
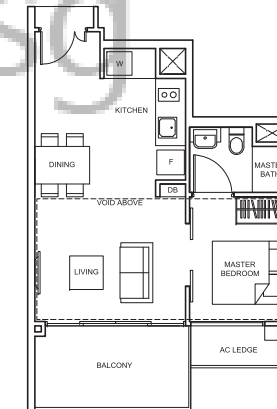
TYPE A1-L

62 sq m/ 667 sq ft
 #12-38, #12-40, #12-44,
 #12-46, #12-47



TYPE A3-L

66 sq m/ 710 sq ft
 #12-59, #12-66

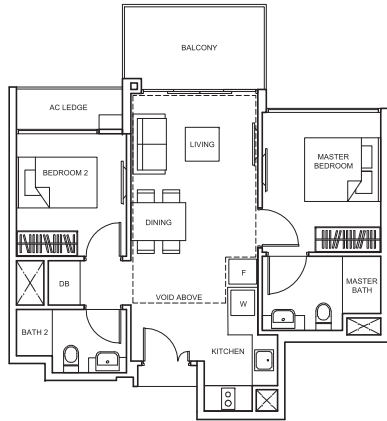


Balconies shall not be enclosed. Only approved screens are to be used.
 Area includes PES, A/C ledge, balcony, roof terrace and strata void, if any. Balconies and PES may not be fully covered. Some units are mirror images of the apartment plans shown in the brochure. Please refer to the key plans for orientation.
 All plans are not drawn to scale and are subject to changes pending approval by relevant authorities. All floor areas are approximate measurements only and are subject to final survey.

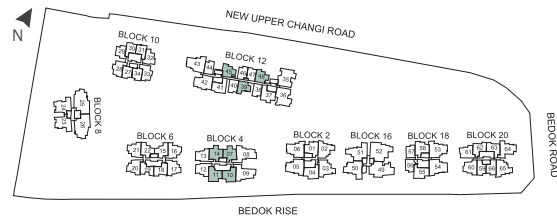
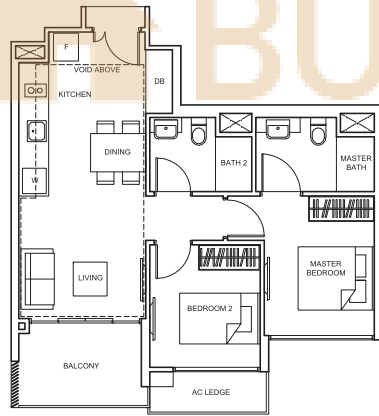
TYPE Bc4-L
64 sq m/ 689 sq ft
#12-39, #12-45, #12-48



TYPE B2-L
78 sq m/ 840 sq ft
#10-07, #10-14

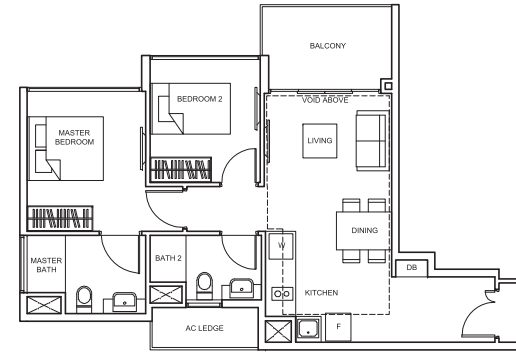


TYPE B3-L
81 sq m/ 872 sq ft
#10-10, #10-11

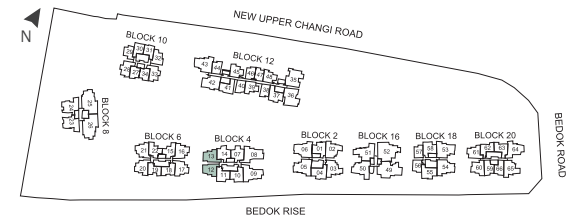
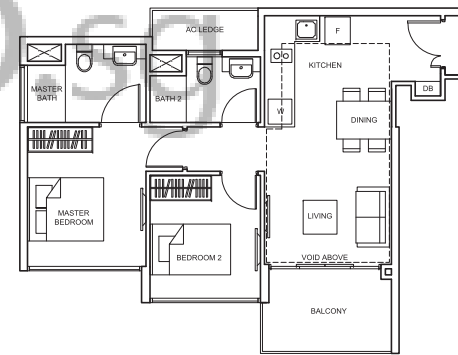


Balconies shall not be enclosed. Only approved screens are to be used. Area includes PES, A/C ledge, balcony, roof terrace and strata void, if any. Balconies and PES may not be fully covered. Some units are mirror images of the apartment plans shown in the brochure. Please refer to the key plans for orientation. All plans are not drawn to scale and are subject to changes pending approval by relevant authorities. All floor areas are approximate measurements only and are subject to final survey.

TYPE B4-L
80 sq m/ 861 sq ft
#10-13

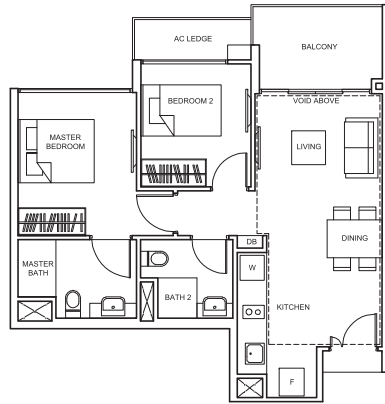


TYPE B5-L
78 sq m/ 840 sq ft
#10-12

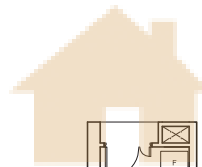
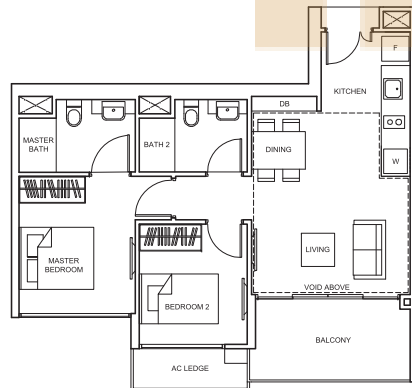


Balconies shall not be enclosed. Only approved screens are to be used. Area includes PES, A/C ledge, balcony, roof terrace and strata void, if any. Balconies and PES may not be fully covered. Some units are mirror images of the apartment plans shown in the brochure. Please refer to the key plans for orientation. All plans are not drawn to scale and are subject to changes pending approval by relevant authorities. All floor areas are approximate measurements only and are subject to final survey.

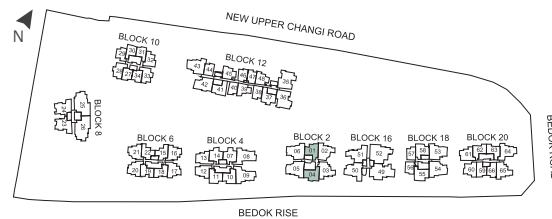
TYPE B6-L
82 sq m/ 883 sq ft
#10-01



TYPE B7-L
84 sq m/ 904 sq ft
#10-04

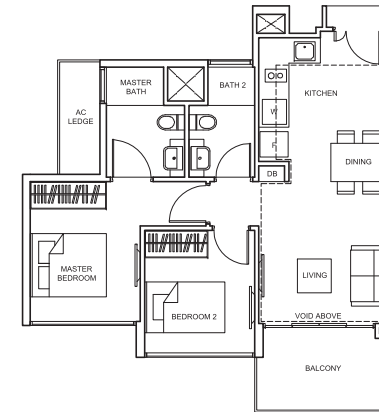


BUYCONDO.SG

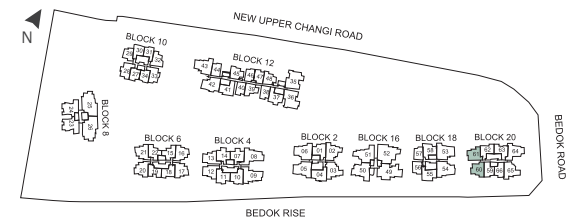
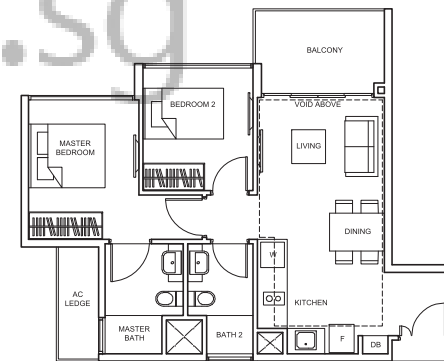


Balconies shall not be enclosed. Only approved screens are to be used.
Area includes PES, A/C ledge, balcony, roof terrace and strata void, if any. Balconies and PES may not be fully covered. Some units are mirror images of the apartment plans shown in the brochure. Please refer to the key plans for orientation.
All plans are not drawn to scale and are subject to changes pending approval by relevant authorities. All floor areas are approximate measurements only and are subject to final survey.

TYPE B8-L
80 sq m/ 861 sq ft
#12-60

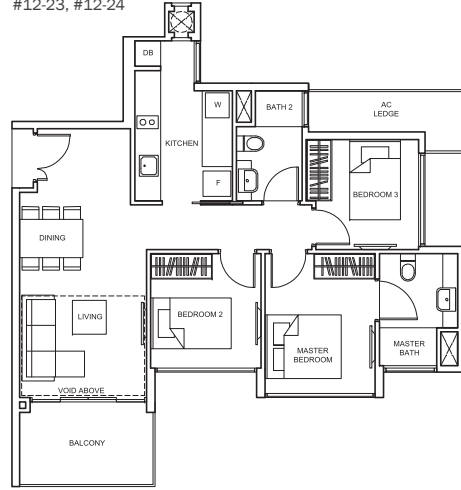


TYPE B9-L
78 sq m/ 840 sq ft
#12-61

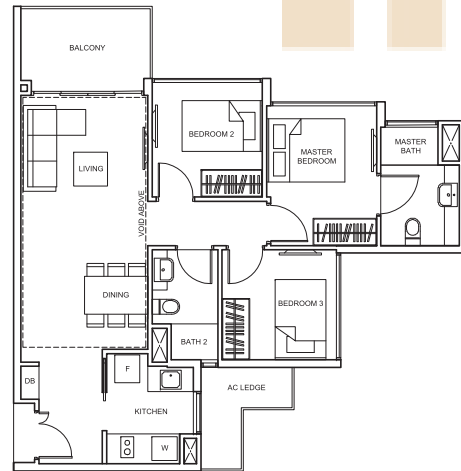


Balconies shall not be enclosed. Only approved screens are to be used.
Area includes PES, A/C ledge, balcony, roof terrace and strata void, if any. Balconies and PES may not be fully covered. Some units are mirror images of the apartment plans shown in the brochure. Please refer to the key plans for orientation.
All plans are not drawn to scale and are subject to changes pending approval by relevant authorities. All floor areas are approximate measurements only and are subject to final survey.

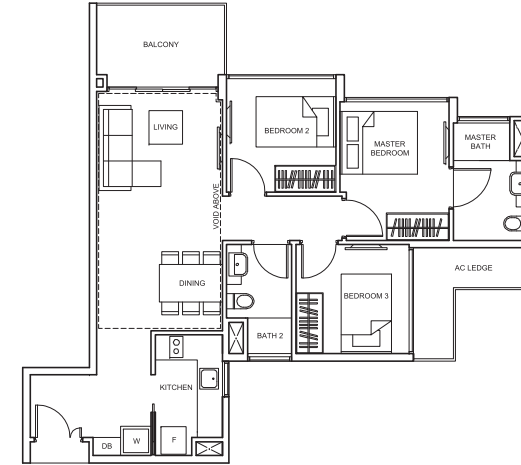
TYPE Cc1-L
86 sq m/ 926 sq ft
#12-23, #12-24



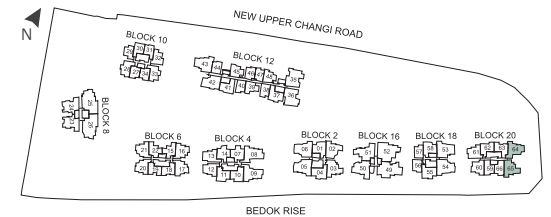
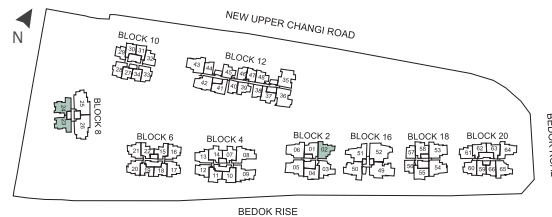
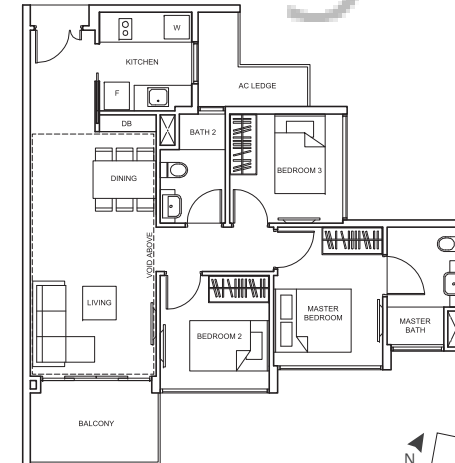
TYPE Cc2-L
97 sq m/ 1,044 sq ft
#10-02



TYPE Cc3-L
98 sq m/ 1,055 sq ft
#12-64



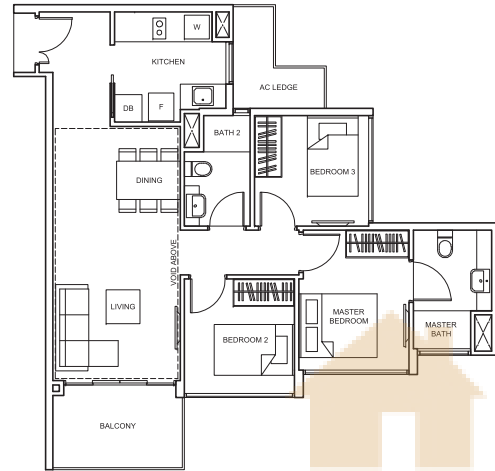
TYPE Cc4-L
97 sq m/ 1,044 sq ft
#12-65



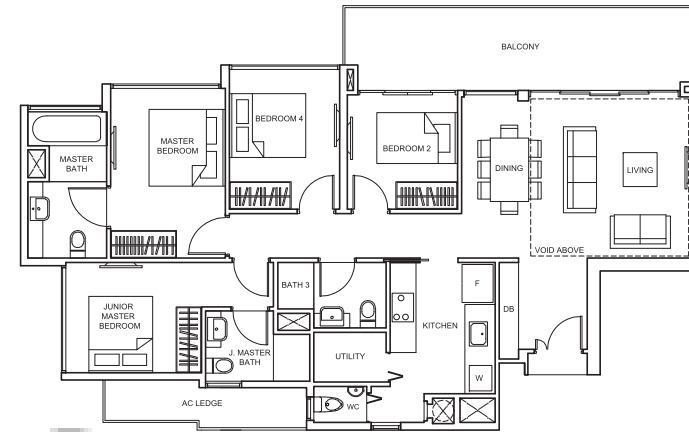
Balconies shall not be enclosed. Only approved screens are to be used. Area includes PES, A/C ledge, balcony, roof terrace and strata void, if any. Balconies and PES may not be fully covered. Some units are mirror images of the apartment plans shown in the brochure. Please refer to the key plans for orientation. All plans are not drawn to scale and are subject to changes pending approval by relevant authorities. All floor areas are approximate measurements only and are subject to final survey.

Balconies shall not be enclosed. Only approved screens are to be used. Area includes PES, A/C ledge, balcony, roof terrace and strata void, if any. Balconies and PES may not be fully covered. Some units are mirror images of the apartment plans shown in the brochure. Please refer to the key plans for orientation. All plans are not drawn to scale and are subject to changes pending approval by relevant authorities. All floor areas are approximate measurements only and are subject to final survey.

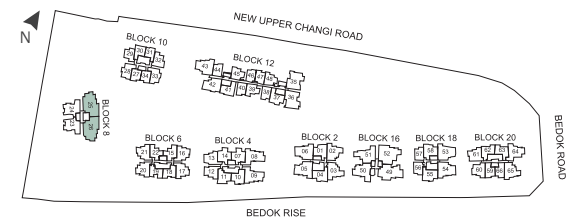
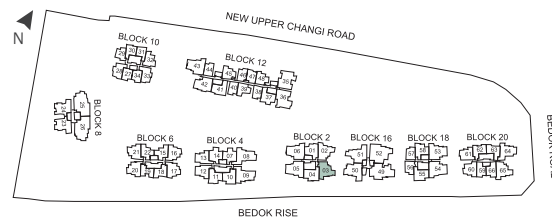
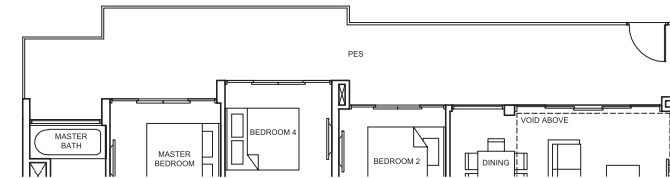
TYPE Cc5-L
98 sq m/ 1,055 sq ft
#10-03



TYPE D1
140 sq m/ 1,507 sq ft
#03-25, #05-25, #07-25, #09-25,
#03-26, #05-26, #07-26, #09-26



TYPE D1-P
156 sq m/ 1,679 sq ft
#01-25, #01-26



Balconies shall not be enclosed. Only approved screens are to be used.
Area includes PES, A/C ledge, balcony, roof terrace and strata void, if any. Balconies and PES may not be fully covered. Some units are mirror images of the apartment plans shown in the brochure. Please refer to the key plans for orientation.
All plans are not drawn to scale and are subject to changes pending approval by relevant authorities. All floor areas are approximate measurements only and are subject to final survey.

Balconies shall not be enclosed. Only approved screens are to be used.
Area includes PES, A/C ledge, balcony, roof terrace and strata void, if any. Balconies and PES may not be fully covered. Some units are mirror images of the apartment plans shown in the brochure. Please refer to the key plans for orientation.
All plans are not drawn to scale and are subject to changes pending approval by relevant authorities. All floor areas are approximate measurements only and are subject to final survey.

CONVERTIBLE

The unique 1- to 2-bedroom Convertible unit offers creative space solutions through the Sliding Integrated Multi-function (SLIM) wall system, a brainchild of Keppel Land.*

Featuring movable wall partitions, the SLIM system lets you configure your personal space according to your various needs. Besides flexibility, you'll also enjoy freedom in an uncluttered home — the walls cleverly double up as functional storage units.

Experience intelligent living, in a home you can truly call your own.

*Patent pending (Singapore patent application no.: 201305381-4)

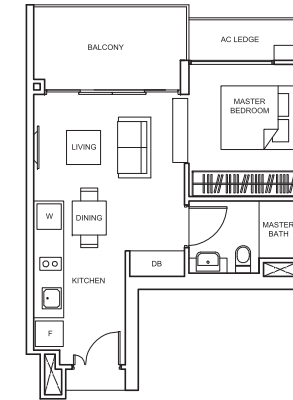


Scan here for a peek into a Convertible home.

1 BEDROOM

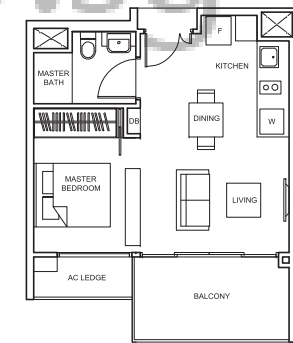
TYPE As1

45 sq m/ 484 sq ft
#02-30 to #11-30,
#02-31 to #11-31



TYPE As2

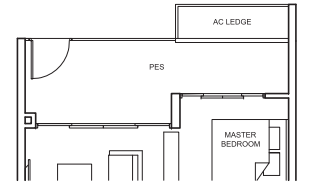
44 sq m/ 474 sq ft
#02-27 to #11-27,
#02-34 to #11-34



CONVERTIBLE

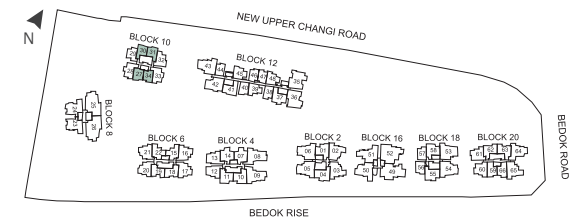
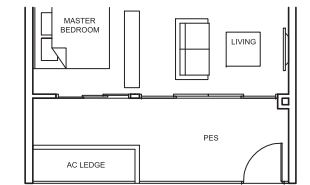
TYPE As1-P

49 sq m/ 527 sq ft
#01-30, #01-31



TYPE As2-P

46 sq m/ 495 sq ft
#01-27, #01-34



Balconies shall not be enclosed. Only approved screens are to be used.
Area includes PES, A/C ledge, balcony, roof terrace and strata void, if any. Balconies and PES may not be fully covered. Some units are mirror images of the apartment plans shown in the brochure. Please refer to the key plans for orientation.
All plans are not drawn to scale and are subject to changes pending approval by relevant authorities. All floor areas are approximate measurements only and are subject to final survey.

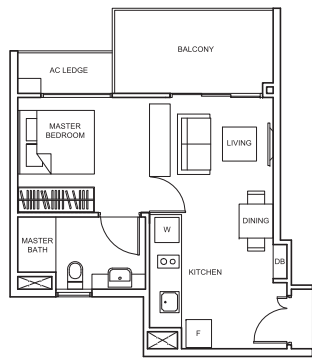
CONVERTIBLE

1 BEDROOM

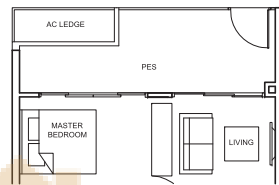
2 BEDROOM

CONVERTIBLE

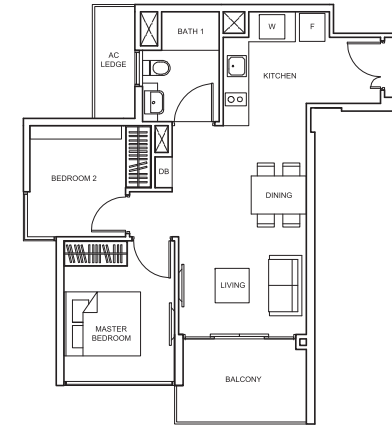
TYPE As3
44 sq m/ 474 sq ft
#02-29 to #11-29



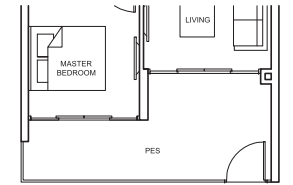
TYPE As3-P
46 sq m/ 495 sq ft
#01-29



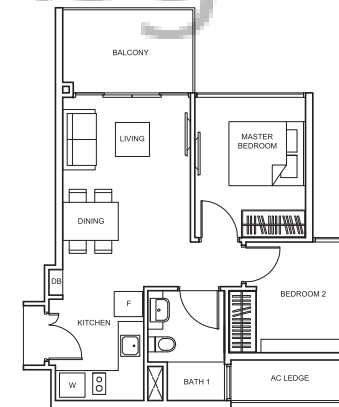
TYPE Bs1
58 sq m/ 624 sq ft
#02-28 to #11-28,
#02-33 to #11-33



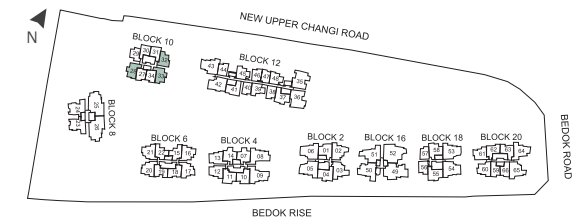
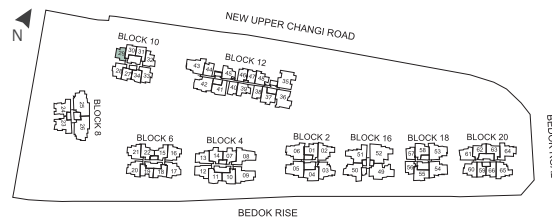
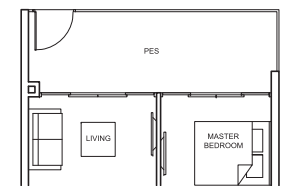
TYPE Bs1-P
64 sq m/ 689 sq ft
#01-28, #01-33



TYPE Bs2
54 sq m/ 581 sq ft
#02-32 to #11-32



TYPE Bs2-P
60 sq m/ 646 sq ft
#01-32

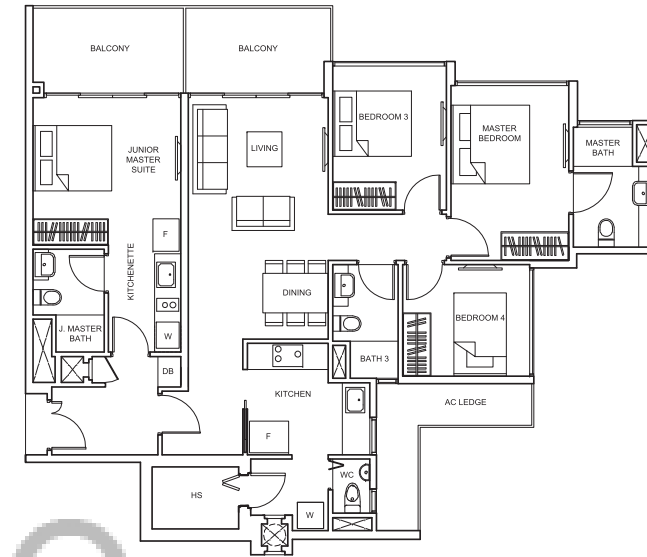


Balconies shall not be enclosed. Only approved screens are to be used. Area includes PES, A/C ledge, balcony, roof terrace and strata void, if any. Balconies and PES may not be fully covered. Some units are mirror images of the apartment plans shown in the brochure. Please refer to the key plans for orientation. All plans are not drawn to scale and are subject to changes pending approval by relevant authorities. All floor areas are approximate measurements only and are subject to final survey.

Balconies shall not be enclosed. Only approved screens are to be used. Area includes PES, A/C ledge, balcony, roof terrace and strata void, if any. Balconies and PES may not be fully covered. Some units are mirror images of the apartment plans shown in the brochure. Please refer to the key plans for orientation. All plans are not drawn to scale and are subject to changes pending approval by relevant authorities. All floor areas are approximate measurements only and are subject to final survey.

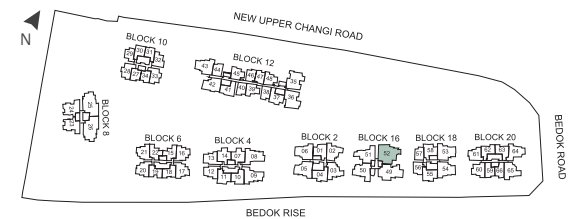
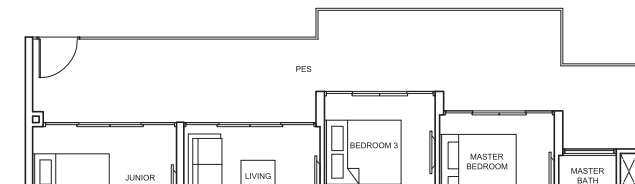
TYPE DK

128 sq m/ 1,378 sq ft
#02-52 to #10-52



TYPE DK - P

145 sq m/ 1,561 sq ft
#01-52



DUAL - KEY

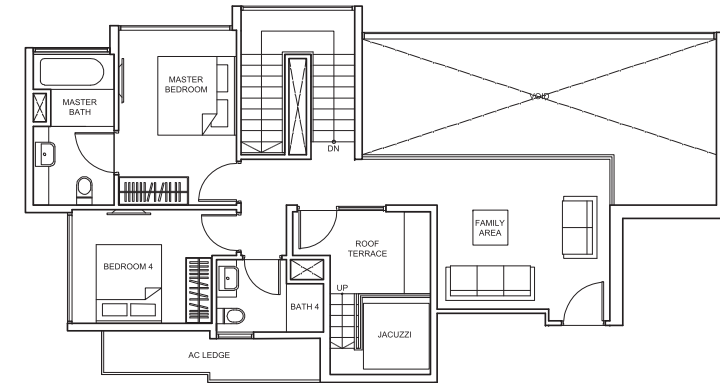
There's no limit to what you can do with a dual-key apartment. The separate yet conjoined units strike a perfect balance between privacy and proximity. Use the extra space as a home office, for parents, friends and tenants, or even as a personal studio.

BUYCONDO.sg

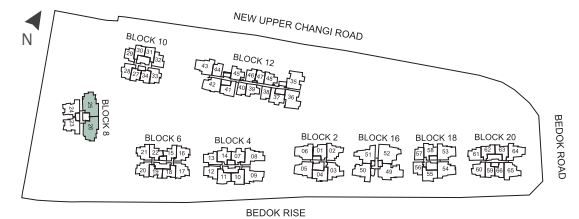
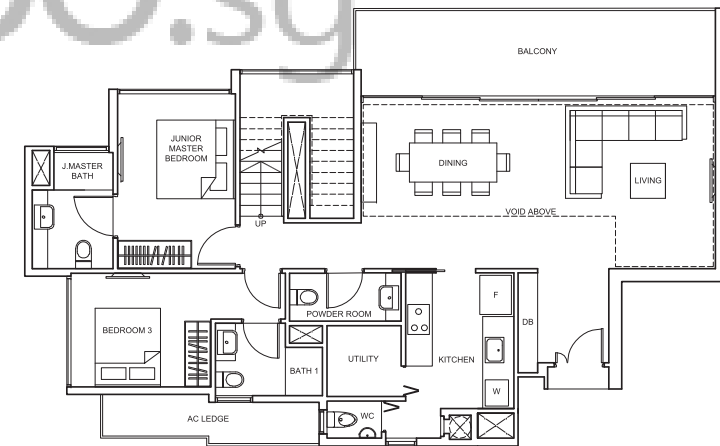
Balconies shall not be enclosed. Only approved screens are to be used.
Area includes PES, A/C ledge, balcony, roof terrace and strata void, if any. Balconies and PES may not be fully covered. Some units are mirror images of the apartment plans shown in the brochure. Please refer to the key plans for orientation.
All plans are not drawn to scale and are subject to changes pending approval by relevant authorities. All floor areas are approximate measurements only and are subject to final survey.

TYPE P1
 229 sq m/ 2,465 sq ft
 #11-25, #11-26

UPPER PENTHOUSE



LOWER PENTHOUSE



Balconies shall not be enclosed. Only approved screens are to be used.
 Area includes PES, A/C ledge, balcony, roof terrace and strata void, if any. Balconies and PES may not be fully covered. Some units are mirror images of the apartment plans shown in the brochure. Please refer to the key plans for orientation.
 All plans are not drawn to scale and are subject to changes pending approval by relevant authorities. All floor areas are approximate measurements only and are subject to final survey.

PENTHOUSE

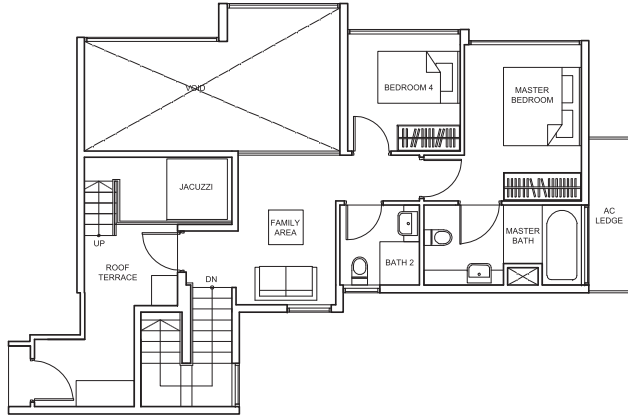
The double-storey, 4- to 5-bedroom Penthouses sit atop the towers. Lounge on the roof terraces and host friends against the backdrop of the open sky.

BUYCONDO.SG

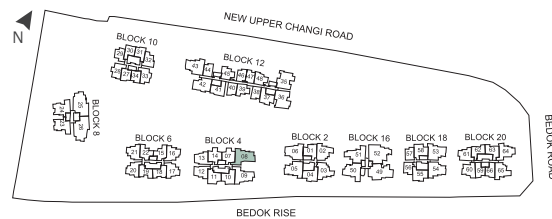
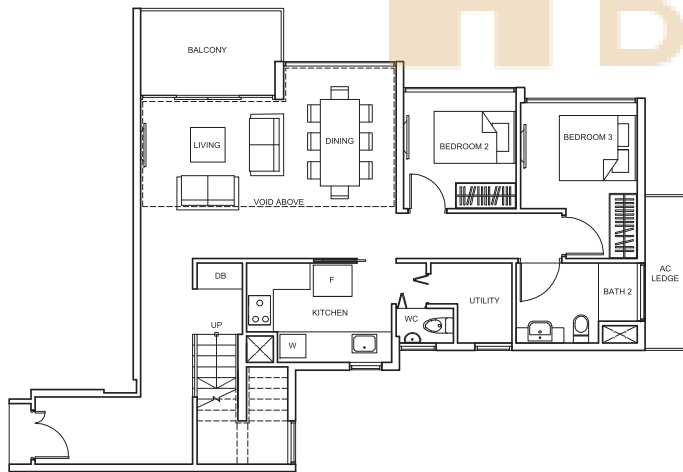
PENTHOUSE

TYPE P2
 186 sq m/ 2,002 sq ft
 #09-08

UPPER PENTHOUSE



LOWER PENTHOUSE

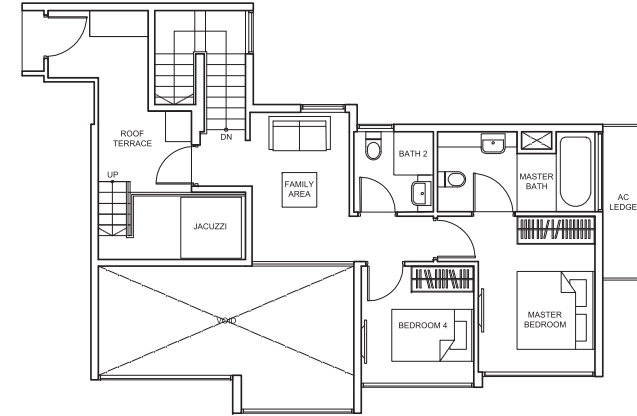


Balconies shall not be enclosed. Only approved screens are to be used.
 Area includes PES, A/C ledge, balcony, roof terrace and strata void, if any. Balconies and PES may not be fully covered. Some units are mirror images of the apartment plans shown in the brochure. Please refer to the key plans for orientation.
 All plans are not drawn to scale and are subject to changes pending approval by relevant authorities. All floor areas are approximate measurements only and are subject to final survey.

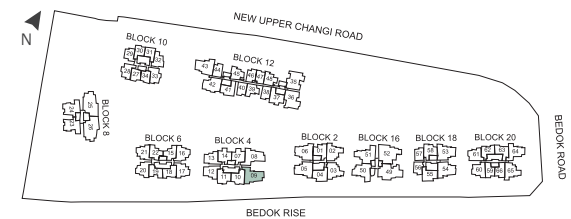
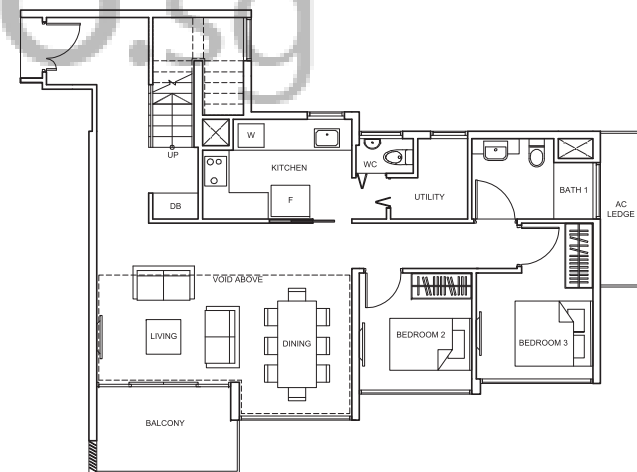
PENTHOUSE

TYPE P3
 182 sq m/ 1,959 sq ft
 #09-09

UPPER PENTHOUSE



LOWER PENTHOUSE

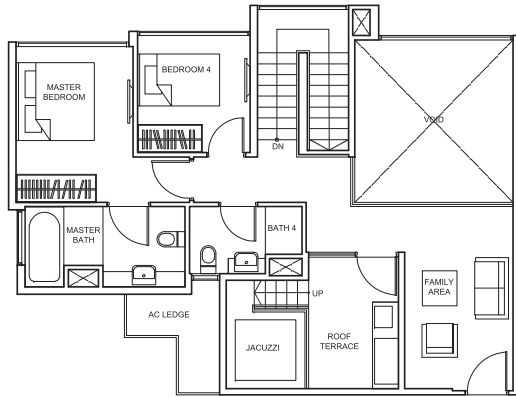


Balconies shall not be enclosed. Only approved screens are to be used.
 Area includes PES, A/C ledge, balcony, roof terrace and strata void, if any. Balconies and PES may not be fully covered. Some units are mirror images of the apartment plans shown in the brochure. Please refer to the key plans for orientation.
 All plans are not drawn to scale and are subject to changes pending approval by relevant authorities. All floor areas are approximate measurements only and are subject to final survey.

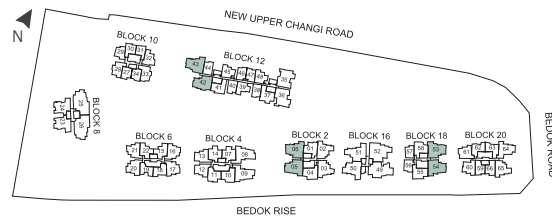
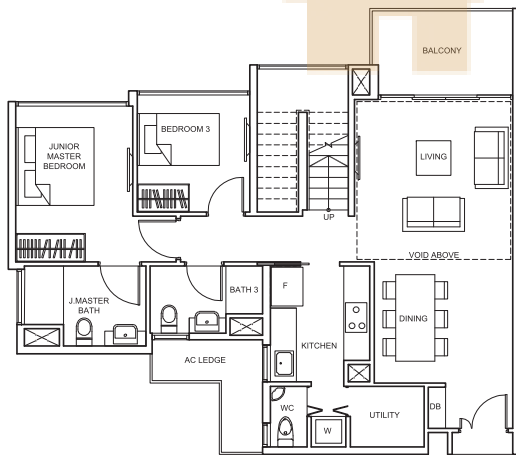
TYPE P4

181 sq m/ 1,948 sq ft
 #09-05, #09-06, #11-42,
 #11-43, #11-53, #11-54

UPPER PENTHOUSE



LOWER PENTHOUSE

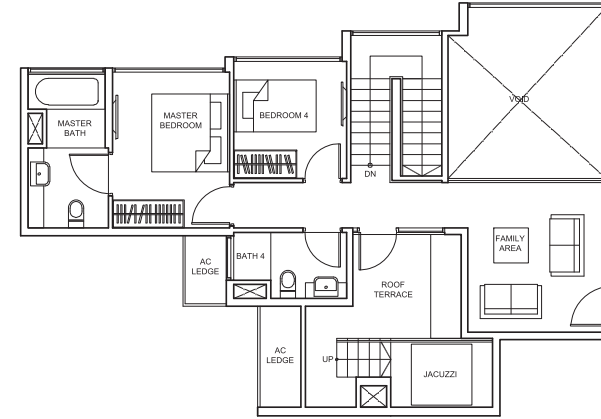


Balconies shall not be enclosed. Only approved screens are to be used.
 Area includes PES, A/C ledge, balcony, roof terrace and strata void, if any. Balconies and PES may not be fully covered. Some units are mirror images of the apartment plans shown in the brochure. Please refer to the key plans for orientation.
 All plans are not drawn to scale and are subject to changes pending approval by relevant authorities. All floor areas are approximate measurements only and are subject to final survey.

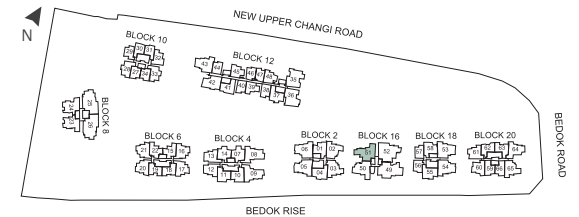
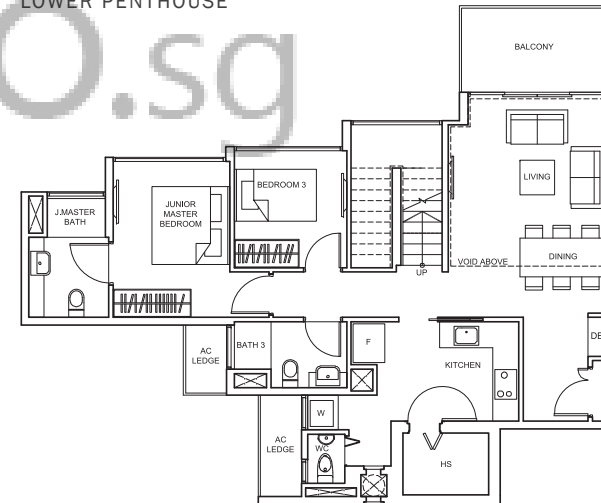
TYPE P5

184 sq m/ 1,981 sq ft
 #11-51

UPPER PENTHOUSE



LOWER PENTHOUSE

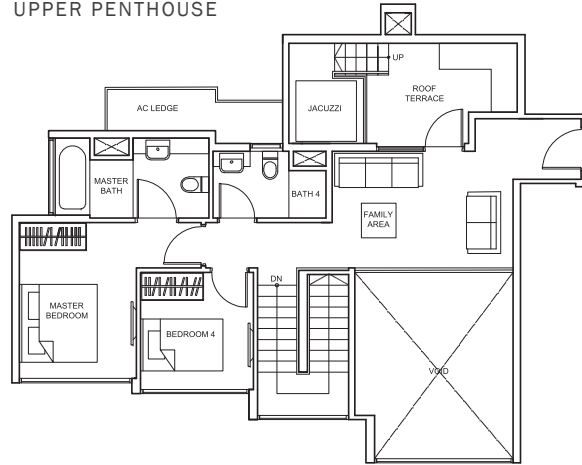


Balconies shall not be enclosed. Only approved screens are to be used.
 Area includes PES, A/C ledge, balcony, roof terrace and strata void, if any. Balconies and PES may not be fully covered. Some units are mirror images of the apartment plans shown in the brochure. Please refer to the key plans for orientation.
 All plans are not drawn to scale and are subject to changes pending approval by relevant authorities. All floor areas are approximate measurements only and are subject to final survey.

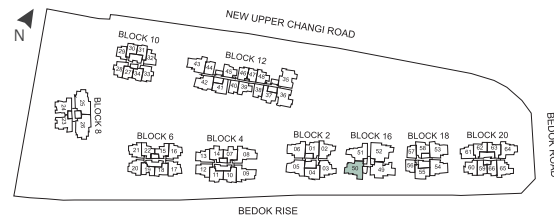
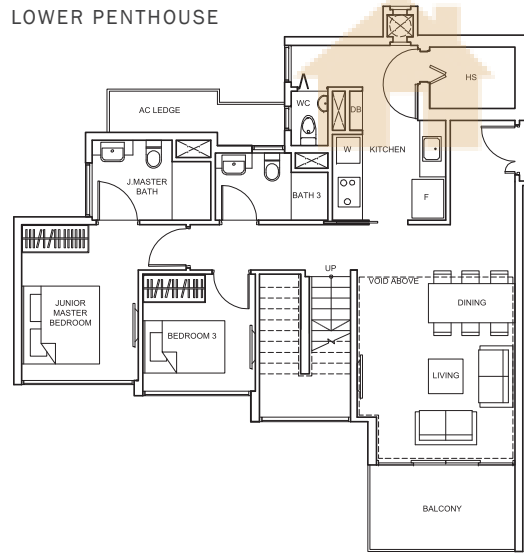
TYPE P6

187 sq m/ 2,013 sq ft
#11-50

UPPER PENTHOUSE



LOWER PENTHOUSE

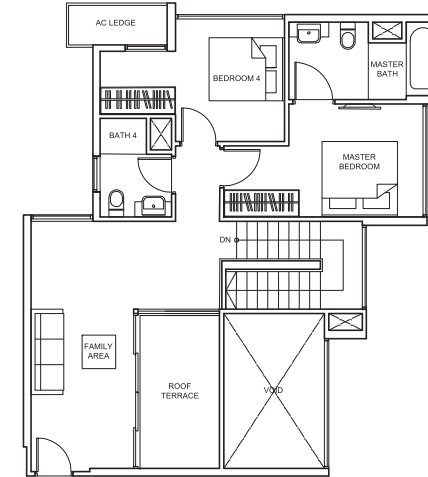


Balconies shall not be enclosed. Only approved screens are to be used.
Area includes PES, A/C ledge, balcony, roof terrace and strata void, if any. Balconies and PES may not be fully covered. Some units are mirror images of the apartment plans shown in the brochure. Please refer to the key plans for orientation.
All plans are not drawn to scale and are subject to changes pending approval by relevant authorities. All floor areas are approximate measurements only and are subject to final survey.

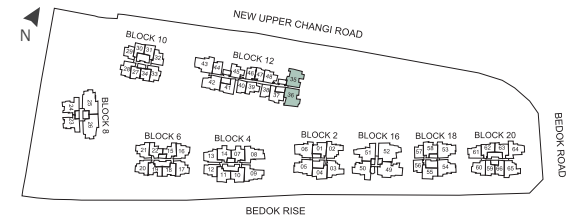
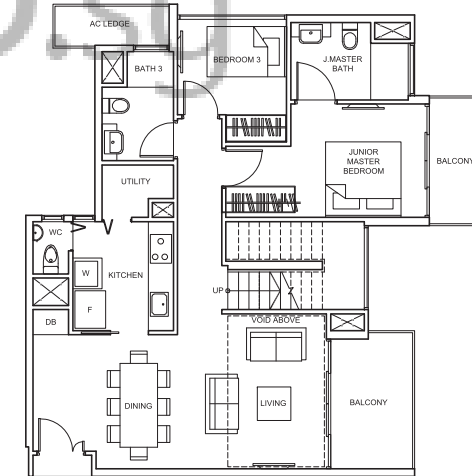
TYPE P7

178 sq m/ 1,916 sq ft
#11-35, #11-36

UPPER PENTHOUSE



LOWER PENTHOUSE



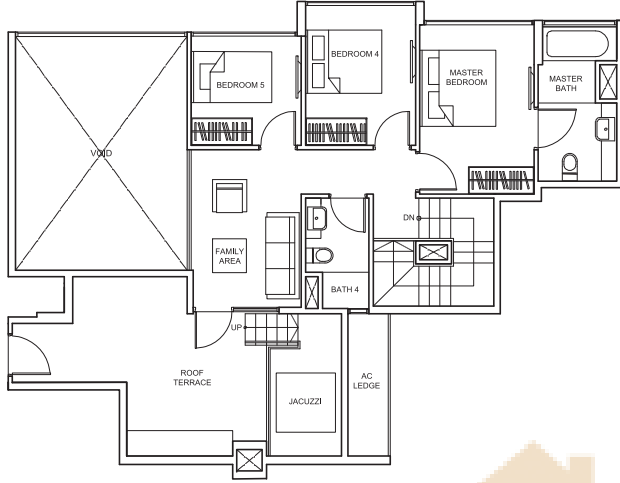
Balconies shall not be enclosed. Only approved screens are to be used.
Area includes PES, A/C ledge, balcony, roof terrace and strata void, if any. Balconies and PES may not be fully covered. Some units are mirror images of the apartment plans shown in the brochure. Please refer to the key plans for orientation.
All plans are not drawn to scale and are subject to changes pending approval by relevant authorities. All floor areas are approximate measurements only and are subject to final survey.

PENTHOUSE

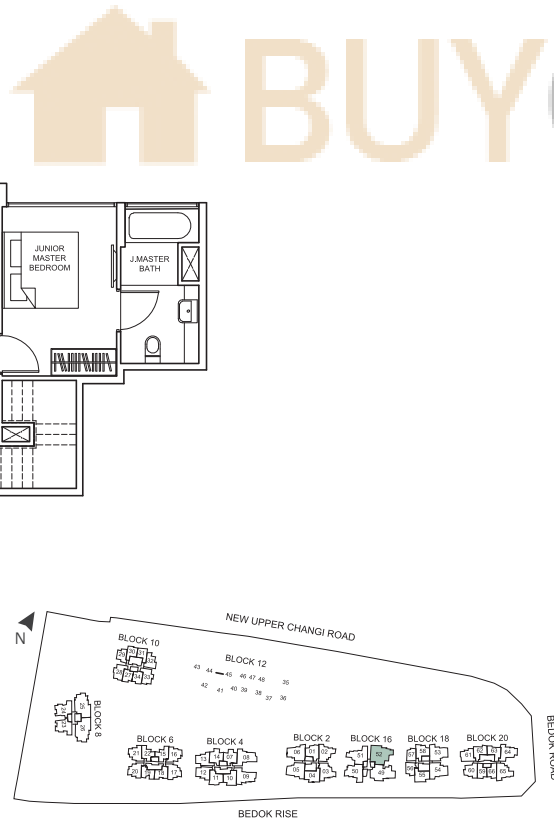
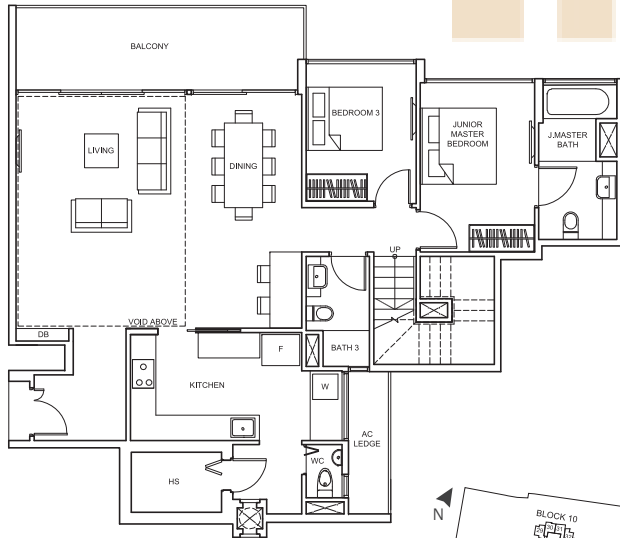
TYPE P8

241 sq m/ 2,594 sq ft
#11-52

UPPER PENTHOUSE



LOWER PENTHOUSE



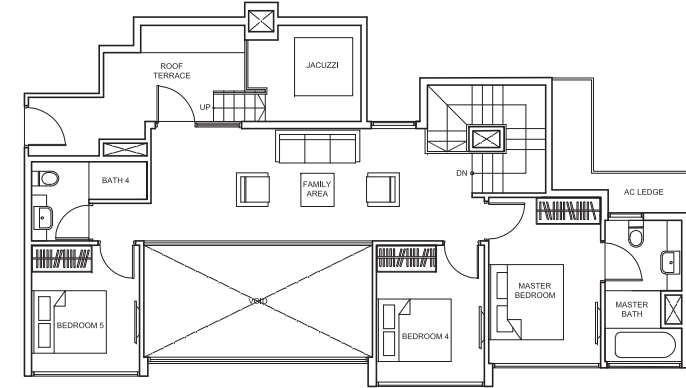
Balconies shall not be enclosed. Only approved screens are to be used.
Area includes PES, A/C ledge, balcony, roof terrace and strata void, if any. Balconies and PES may not be fully covered. Some units are mirror images of the apartment plans shown in the brochure. Please refer to the key plans for orientation.
All plans are not drawn to scale and are subject to changes pending approval by relevant authorities. All floor areas are approximate measurements only and are subject to final survey.

PENTHOUSE

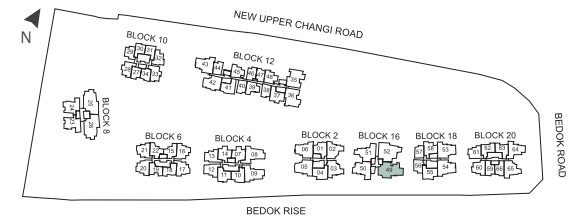
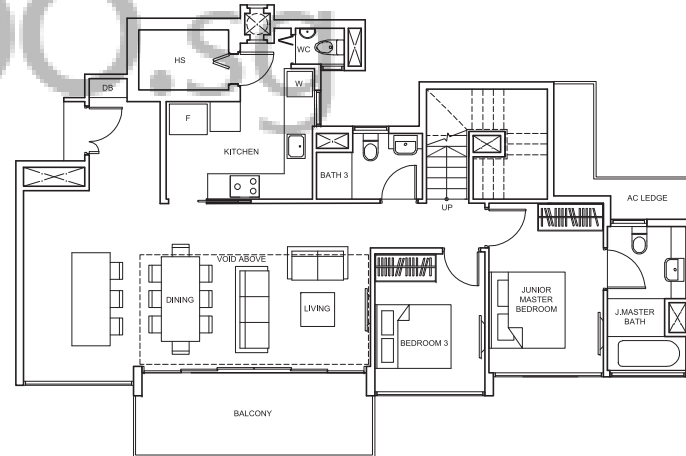
TYPE P9

228 sq m/ 2,454 sq ft
#11-49

UPPER PENTHOUSE



LOWER PENTHOUSE



Balconies shall not be enclosed. Only approved screens are to be used.
Area includes PES, A/C ledge, balcony, roof terrace and strata void, if any. Balconies and PES may not be fully covered. Some units are mirror images of the apartment plans shown in the brochure. Please refer to the key plans for orientation.
All plans are not drawn to scale and are subject to changes pending approval by relevant authorities. All floor areas are approximate measurements only and are subject to final survey.