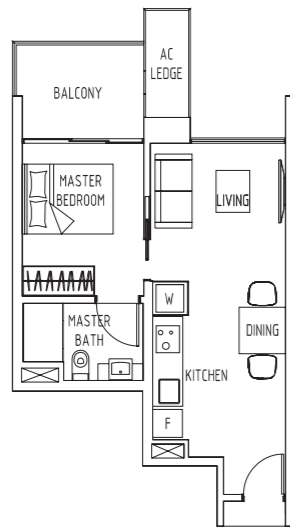
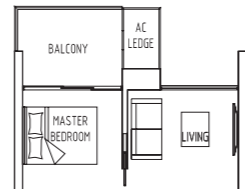


# 1 Bedroom



## Type A1

46 to 47 sqm / 495 to 506 sqft  
 #06-30 to #16-30, #06-34 to #16-34  
 #06-36 to #16-36



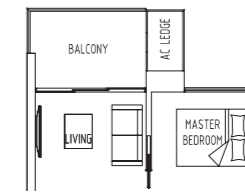
## Type A1-A

45 to 46 sqm / 484 to 495 sqft  
 #02-30 to #05-30, #02-34 to #05-34  
 #02-36 to #05-36



## Type A2

46 sqm / 495 sqft  
 #06-35 to #16-35



## Type A2-A

45 sqm / 484 sqft  
 #02-35 to #05-35



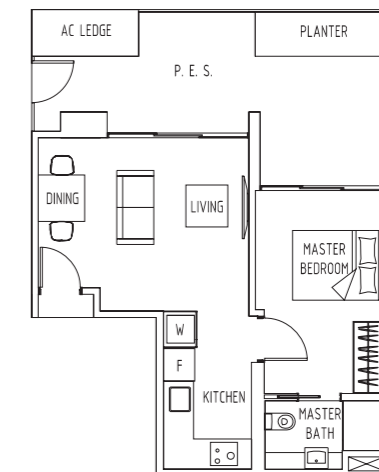
## Type A1-G

57 to 58 sqm / 614 to 624 sqft  
 #01-30, #01-34, #01-36



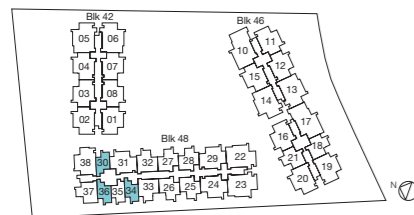
## Type A2-G

56 sqm / 603 sqft  
 #01-35



## Type A3-G

66 sqm / 710 sqft  
 #01-26

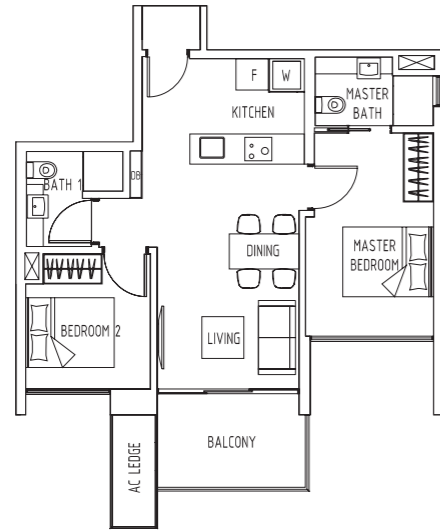


Area includes PES, A/C ledge, balcony, planter, roof terrace and strata void, if any. Some units are mirror images of the apartment plans shown in the brochure. Please refer to the key plans for orientation. All plans are not drawn to scale and are subject to changes as may be approved by the relevant authorities. All floor areas are approximate measurements only and are subject to government survey.

# 1 Bedroom

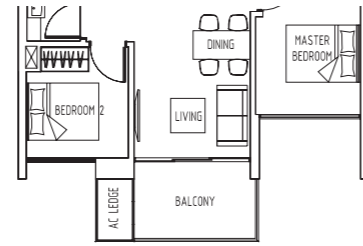


Area includes PES, A/C ledge, balcony, planter, roof terrace and strata void, if any. Some units are mirror images of the apartment plans shown in the brochure. Please refer to the key plans for orientation. All plans are not drawn to scale and are subject to changes as may be approved by the relevant authorities. All floor areas are approximate measurements only and are subject to government survey.



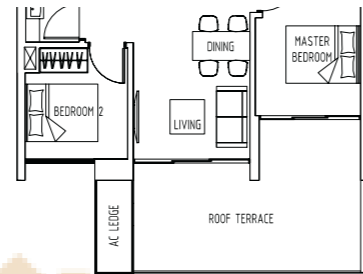
**Type B1**

67 sqm / 721 sqft  
 #06-18 to #16-18, #06-21 to #16-21  
 #06-25 to #16-25, #06-26 to #16-26  
 #06-27 to #16-27, #06-28 to #16-28



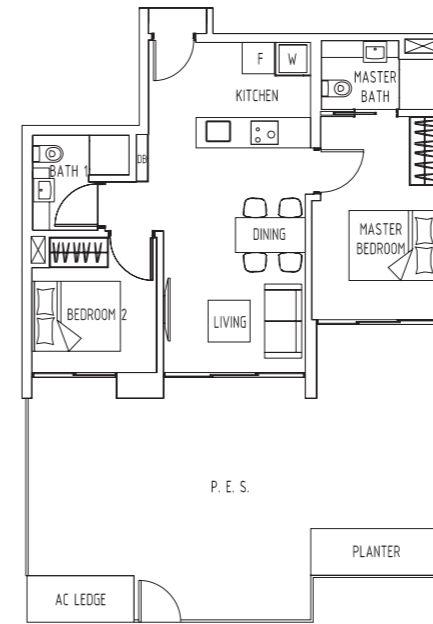
**Type B1-A**

66 to 67 sqm / 710 to 721 sqft  
 #02-18 to #05-18, #02-21 to #05-21  
 #02-25 to #05-25, #02-26 to #05-26  
 #02-27 to #05-27, #02-28 to #05-28



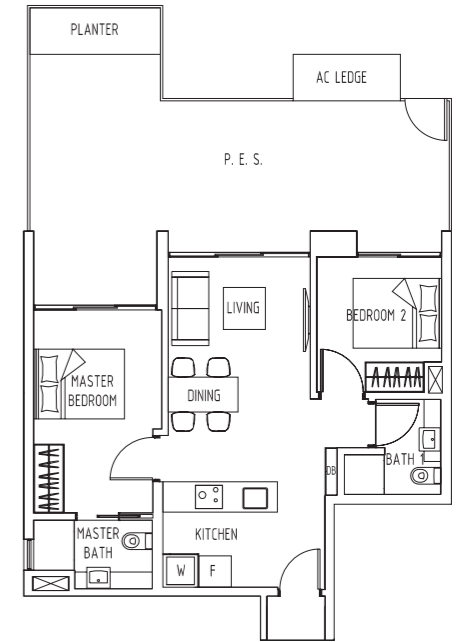
**Type B1-R**

82 sqm / 883 sqft  
 #17-18, #17-21



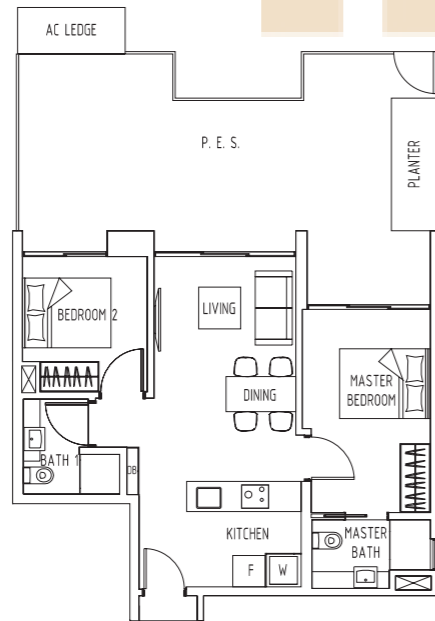
**Type B1-G1**

105 sqm / 1,130 sqft  
 #01-27, #01-28



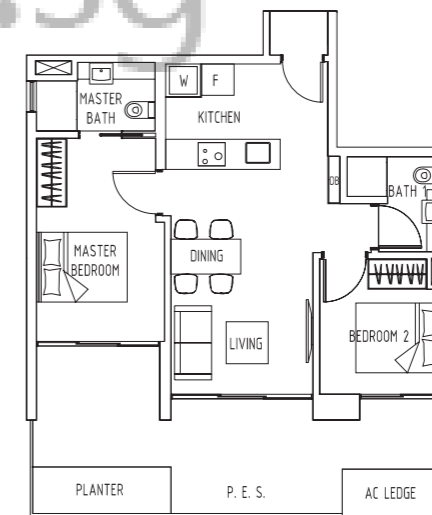
**Type B1-G2**

99 sqm / 1,066 sqft  
 #01-21



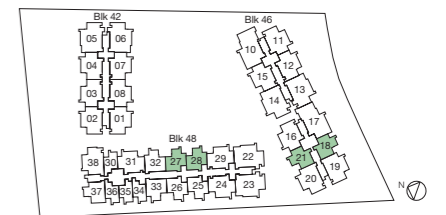
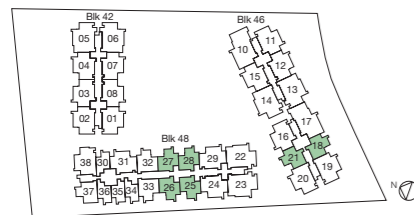
**Type B1-G**

99 sqm / 1,066 sqft  
 #01-25



**Type B1-G3**

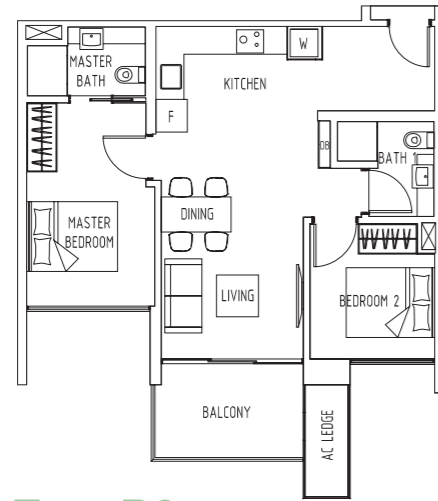
84 sqm / 904 sqft  
 #01-18



Area includes PES, A/C ledge, balcony, planter, roof terrace and strata void, if any. Some units are mirror images of the apartment plans shown in the brochure. Please refer to the key plans for orientation. All plans are not drawn to scale and are subject to changes as may be approved by the relevant authorities. All floor areas are approximate measurements only and are subject to government resurvey.

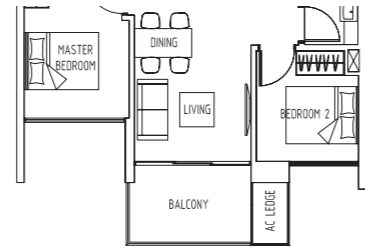
Area includes PES, A/C ledge, balcony, planter, roof terrace and strata void, if any. Some units are mirror images of the apartment plans shown in the brochure. Please refer to the key plans for orientation. All plans are not drawn to scale and are subject to changes as may be approved by the relevant authorities. All floor areas are approximate measurements only and are subject to government resurvey.

# 2 Bedroom



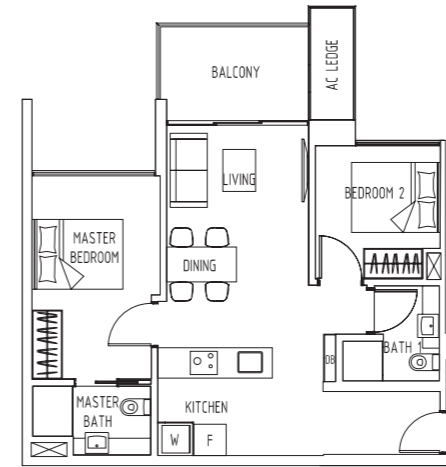
## Type B2

72 sqm / 775 sqft  
#06-32 to #16-32, #06-33 to #16-33



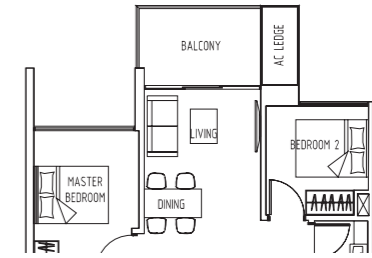
## Type B2-A

71 sqm / 764 sqft  
#02-32 to #05-32, #02-33 to #05-33



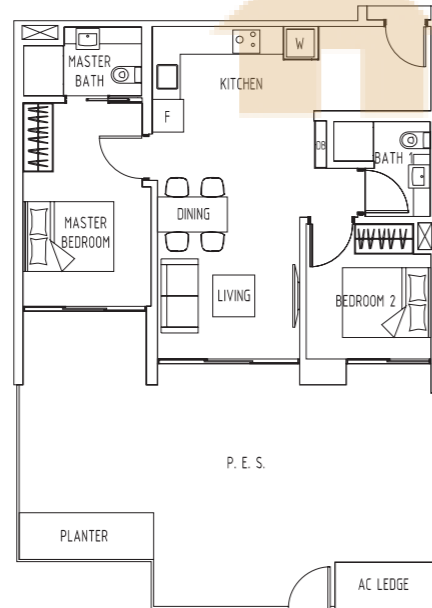
## Type B3

71 sqm / 764 sqft  
#06-37 to #16-37



## Type B3-A

70 sqm / 753 sqft  
#02-37 to #05-37



## Type B2-G

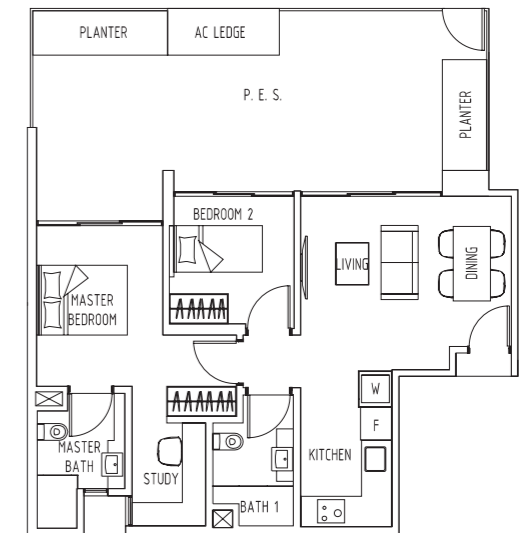
110 sqm / 1,184 sqft  
#01-32, #01-33

BUYCONDO.SG



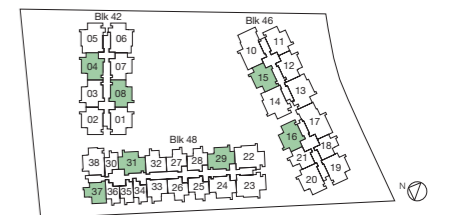
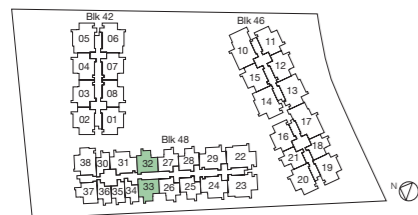
## Type B3-G

107 sqm / 1,152 sqft  
#01-37



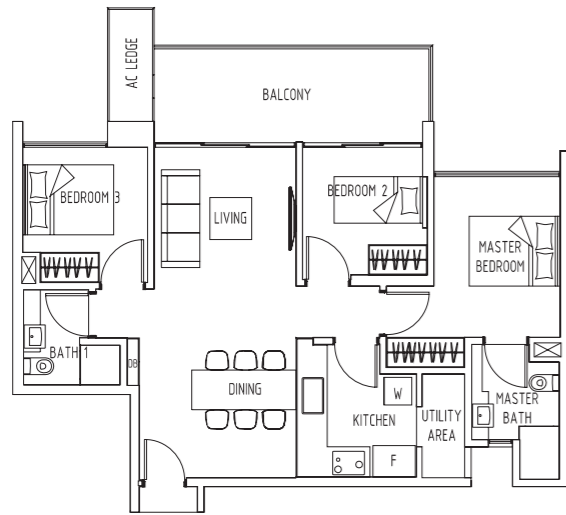
## Type B4-G

104 to 115 sqm / 1,119 to 1,238 sqft  
#01-04, #01-08, #01-15  
#01-16, #01-29, #01-31



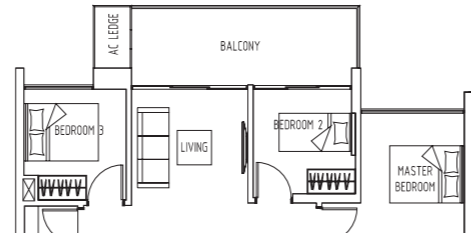
Area includes PES, A/C ledge, balcony, planter, roof terrace and strata void, if any. Some units are mirror images of the apartment plans shown in the brochure. Please refer to the key plans for orientation. All plans are not drawn to scale and are subject to changes as may be approved by the relevant authorities. All floor areas are approximate measurements only and are subject to government resurvey.

Area includes PES, A/C ledge, balcony, planter, roof terrace and strata void, if any. Some units are mirror images of the apartment plans shown in the brochure. Please refer to the key plans for orientation. All plans are not drawn to scale and are subject to changes as may be approved by the relevant authorities. All floor areas are approximate measurements only and are subject to government resurvey.



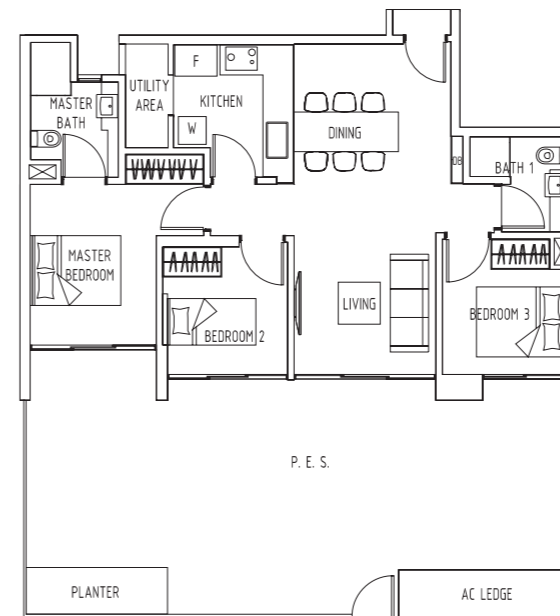
**Type C1**

93 to 94 sqm / 1,001 to 1,011 sqft  
 #06-03 to #16-03, #06-04 to #16-04, #06-07 to #16-07  
 #06-08 to #16-08, #06-12 to #16-12, #06-15 to #16-15  
 #06-16 to #16-16, #06-24 to #16-24, #06-29 to #16-29  
 #06-31 to #16-31



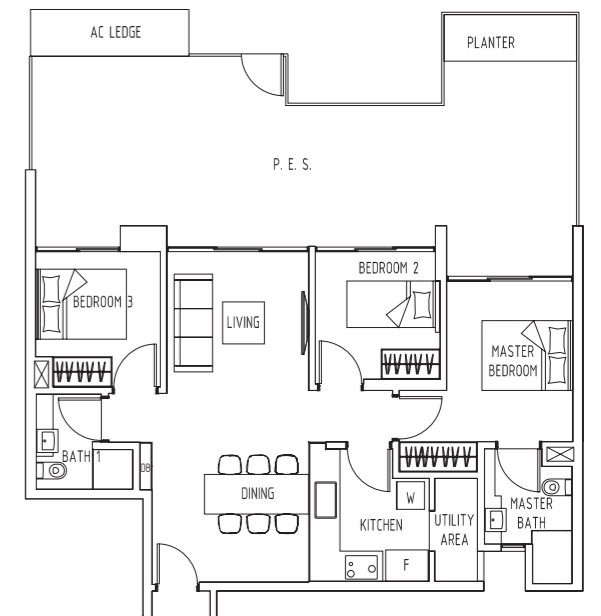
**Type C1-A**

92 to 93 sqm / 990 to 1,001 sqft  
 #02-03 to #05-03, #02-04 to #05-04, #02-07 to #05-07  
 #02-08 to #05-08, #02-12 to #05-12, #02-15 to #05-15  
 #02-16 to #05-16, #02-24 to #05-24, #02-29 to #05-29  
 #02-31 to #05-31



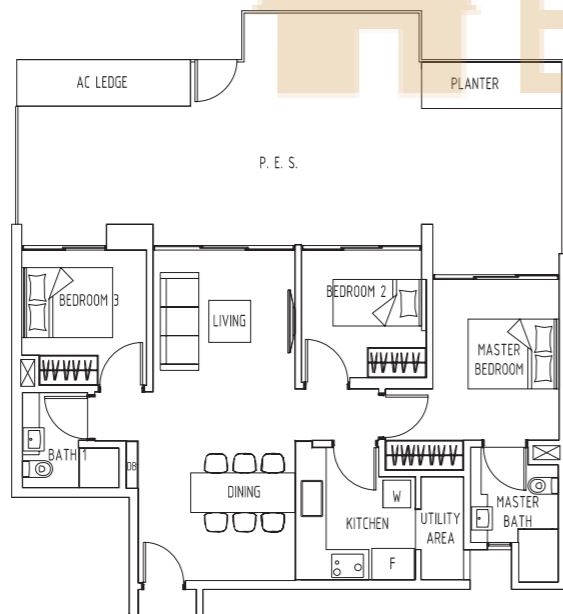
**Type C1-G1**

140 sqm / 1,507sqft  
 #01-07



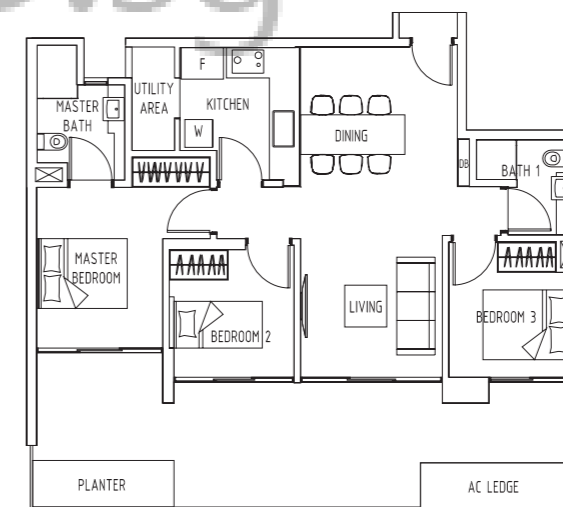
**Type C1-G2**

131 sqm / 1,410 sqft  
 #01-24



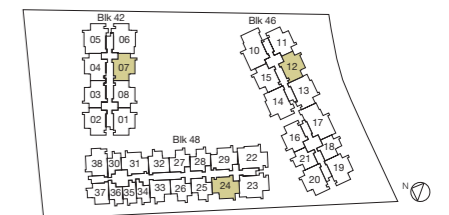
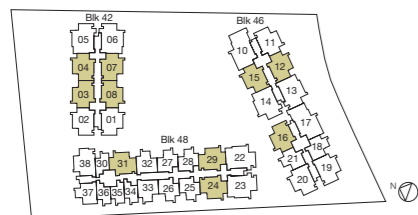
**Type C1-G**

131 sqm / 1,410 sqft  
 #01-03



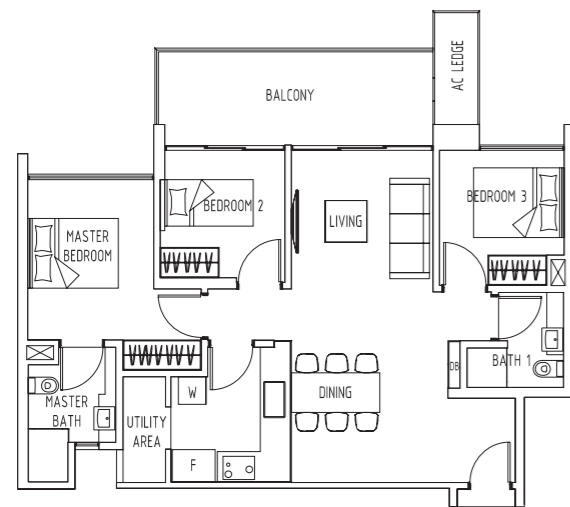
**Type C1-G3**

112 sqm / 1,206 sqft  
 #01-12



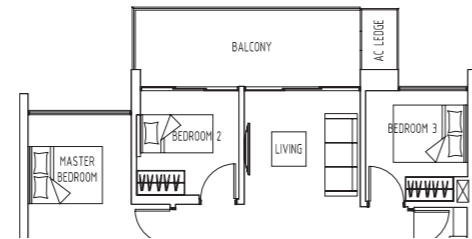
Area includes PES, A/C ledge, balcony, planter, roof terrace and strata void, if any. Some units are mirror images of the apartment plans shown in the brochure. Please refer to the key plans for orientation. All plans are not drawn to scale and are subject to changes as may be approved by the relevant authorities. All floor areas are approximate measurements only and are subject to government resurvey.

Area includes PES, A/C ledge, balcony, planter, roof terrace and strata void, if any. Some units are mirror images of the apartment plans shown in the brochure. Please refer to the key plans for orientation. All plans are not drawn to scale and are subject to changes as may be approved by the relevant authorities. All floor areas are approximate measurements only and are subject to government resurvey.



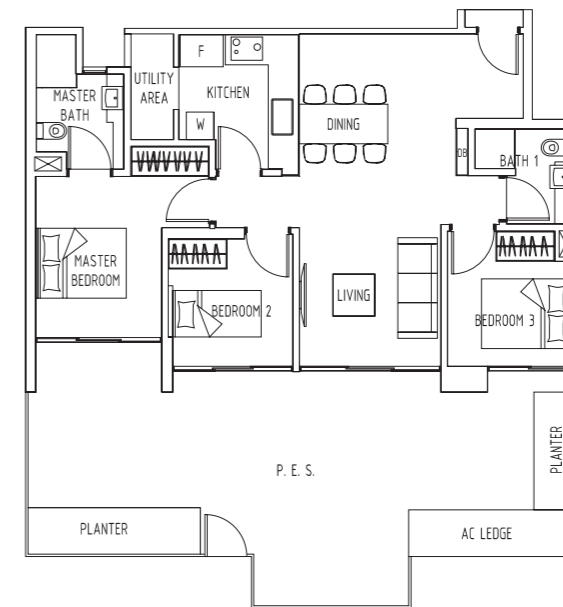
**Type C2**

95 to 96 sqm / 1,023 to 1,033 sqft  
 #06-01 to #16-01, #06-02 to #16-02  
 #06-11 to #16-11



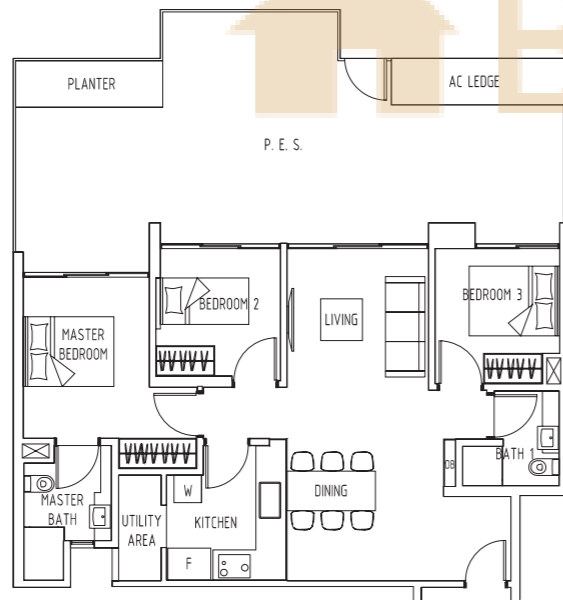
**Type C2-A**

94 to 96 sqm / 1,011 to 1,033 sqft  
 #02-01 to #05-01, #02-02 to #05-02  
 #02-11 to #05-11



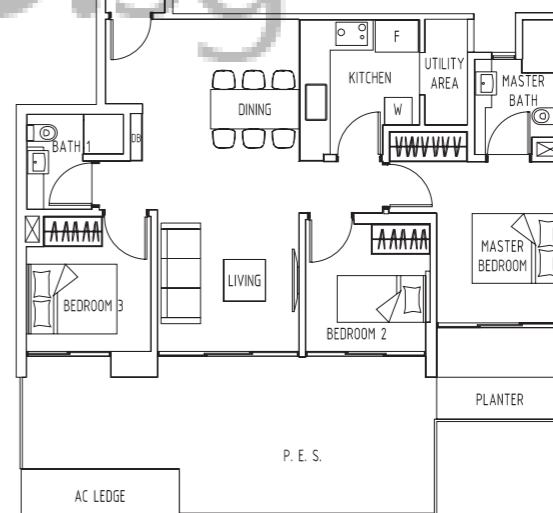
**Type C2-G1**

134 sqm / 1,442 sqft  
 #01-01



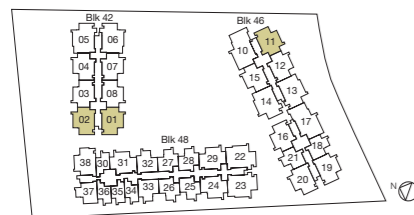
**Type C2-G**

134 sqm / 1,442 sqft  
 #01-02



**Type C2-G2**

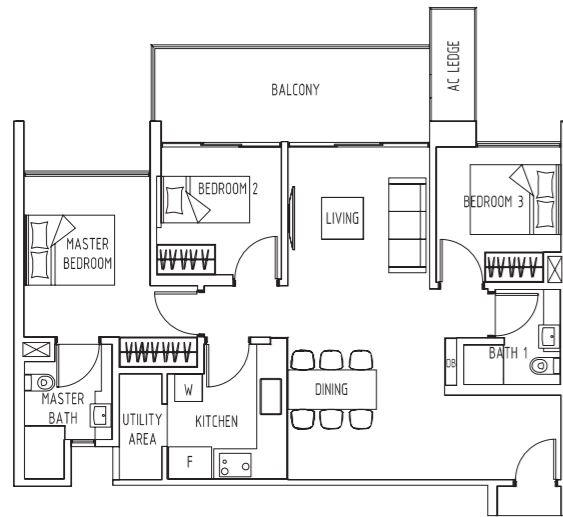
116 sqm / 1,249 sqft  
 #01-11



Area includes PES, A/C ledge, balcony, planter, roof terrace and strata void, if any. Some units are mirror images of the apartment plans shown in the brochure. Please refer to the key plans for orientation. All plans are not drawn to scale and are subject to changes as may be approved by the relevant authorities. All floor areas are approximate measurements only and are subject to government resurvey.

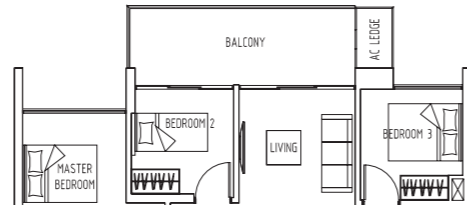
Area includes PES, A/C ledge, balcony, planter, roof terrace and strata void, if any. Some units are mirror images of the apartment plans shown in the brochure. Please refer to the key plans for orientation. All plans are not drawn to scale and are subject to changes as may be approved by the relevant authorities. All floor areas are approximate measurements only and are subject to government resurvey.

# 3 Bedroom



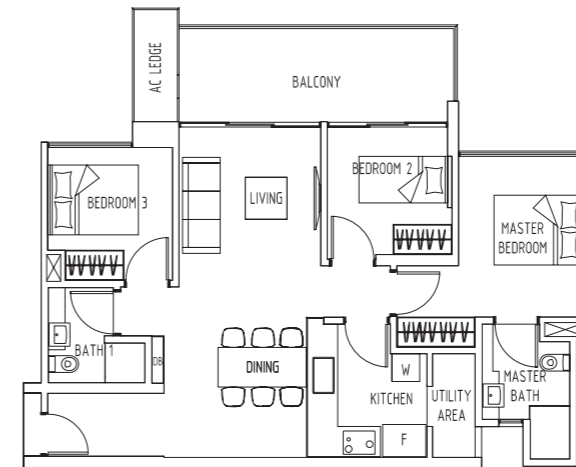
## Type C3

98 to 99 sqm / 1,055 to 1,066 sqft  
#06-19 to #16-19, #06-20 to #16-20



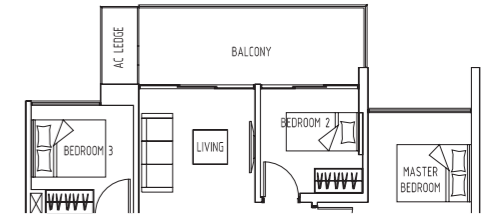
## Type C3-A

97 to 98 sqm / 1,044 to 1,055 sqft  
#02-19 to #05-19, #02-20 to #05-20



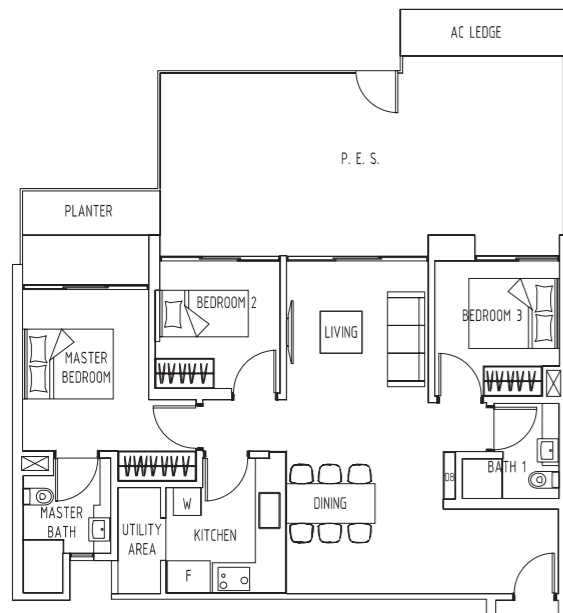
## Type C4

95 sqm / 1,023 sqft  
#06-38 to #16-38



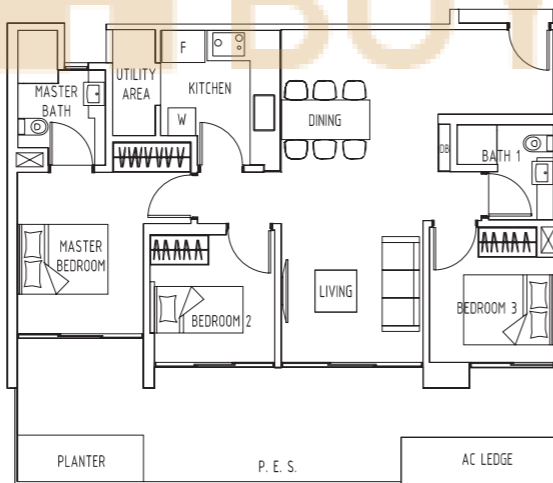
## Type C4-A

95 sqm / 1,023 sqft  
#02-38 to #05-38



## Type C3-G

128 sqm / 1,378 sqft  
#01-20



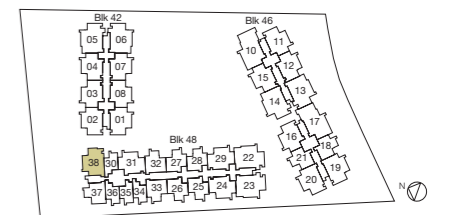
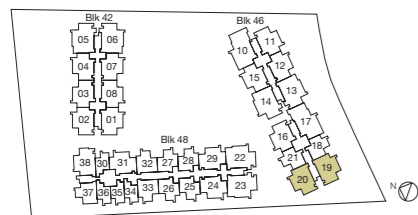
## Type C3-G1

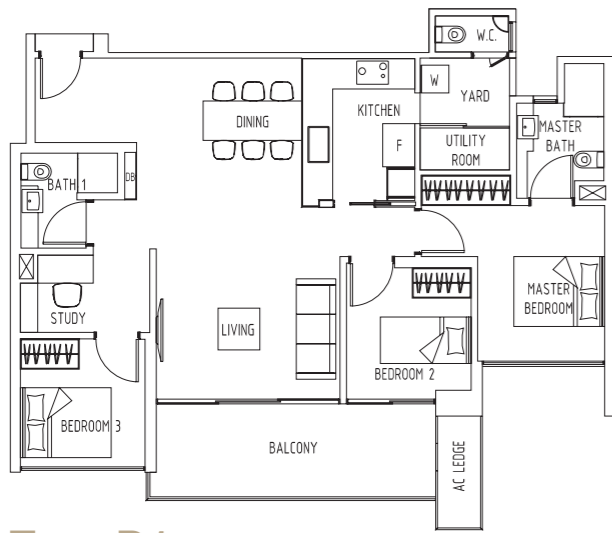
115 sqm / 1,238 sqft  
#01-19



## Type C4-G

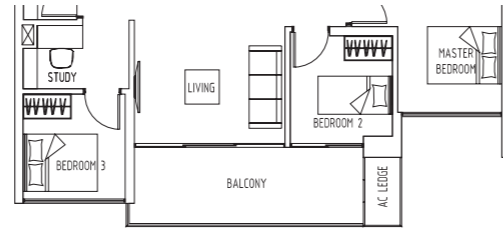
133 sqm / 1,432 sqft  
#01-38





**Type D1**

113 sqm / 1,216 sqft  
 #06-05 to #16-05, #06-06 to #16-06  
 #06-13 to #16-13, #06-14 to #16-14  
 #06-22 to #16-22, #06-23 to #16-23



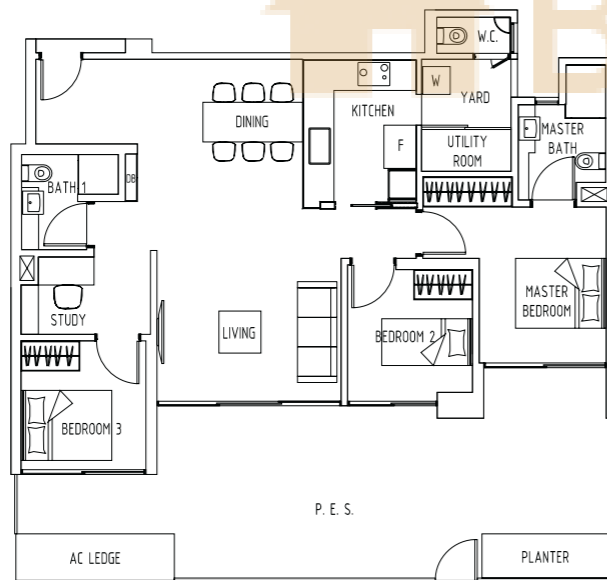
**Type D1-A**

112 sqm / 1,206 sqft  
 #02-05 to #05-05, #02-06 to #05-06  
 #02-13 to #05-13, #02-14 to #05-14  
 #02-22 to #05-22, #02-23 to #05-23



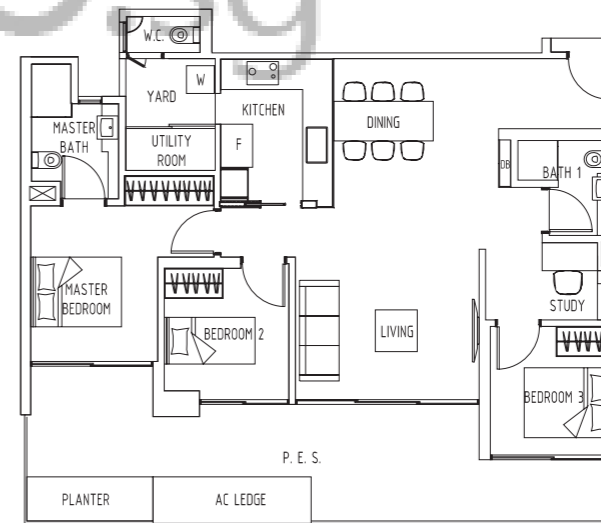
**Type D1-G1**

152 sqm / 1,636 sqft  
 #01-05, #01-22



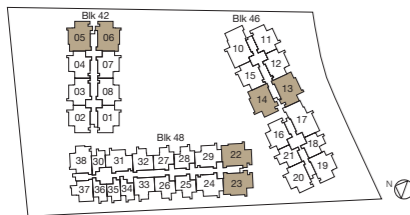
**Type D1-G**

144 to 159 sqm / 1,550 to 1,711 sqft  
 #01-06, #01-14, #01-23



**Type D1-G2**

129 sqm / 1,389 sqft  
 #01-13

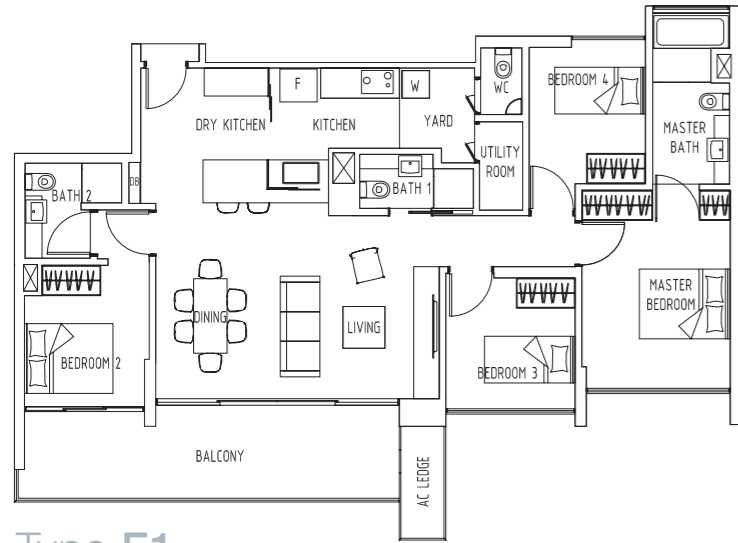


Area includes PES, A/C ledge, balcony, planter, roof terrace and strata void, if any. Some units are mirror images of the apartment plans shown in the brochure. Please refer to the key plans for orientation. All plans are not drawn to scale and are subject to changes as may be approved by the relevant authorities. All floor areas are approximate measurements only and are subject to government resurvey.

Area includes PES, A/C ledge, balcony, planter, roof terrace and strata void, if any. Some units are mirror images of the apartment plans shown in the brochure. Please refer to the key plans for orientation. All plans are not drawn to scale and are subject to changes as may be approved by the relevant authorities. All floor areas are approximate measurements only and are subject to government resurvey.

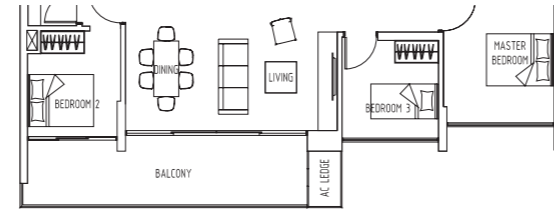
# 4 Bedroom

# 4 Bedroom



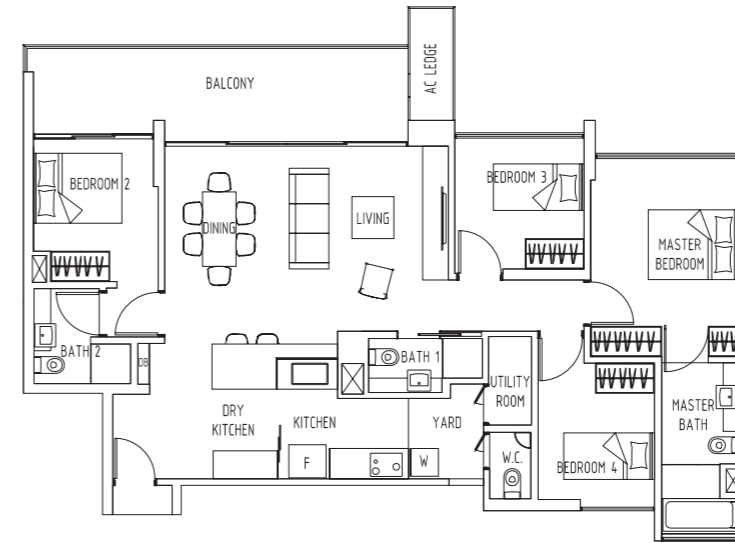
## Type E1

130 sqm / 1,399 sqft  
#06-17 to #16-17



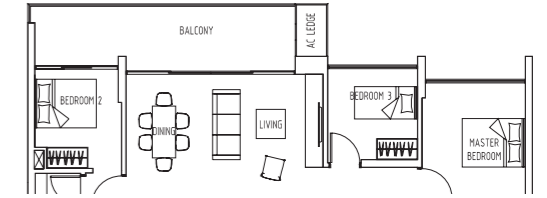
## Type E1-A

129 sqm / 1,389 sqft  
#02-17 to #05-17



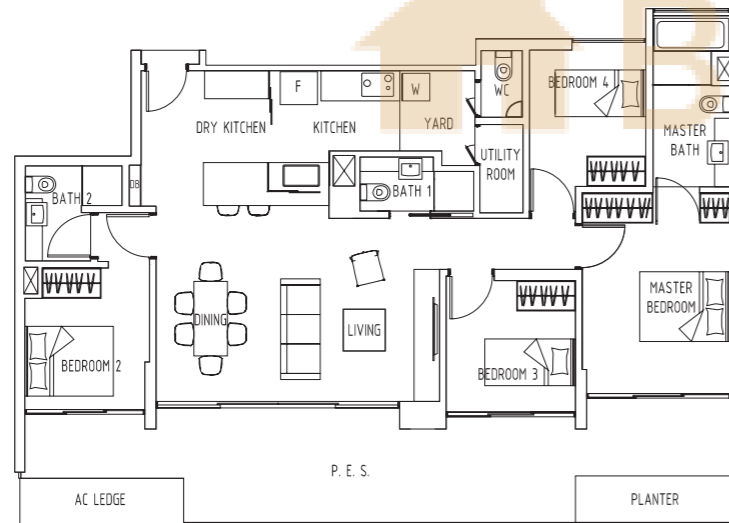
## Type E2

132 sqm / 1,421 sqft  
#06-10 to #16-10



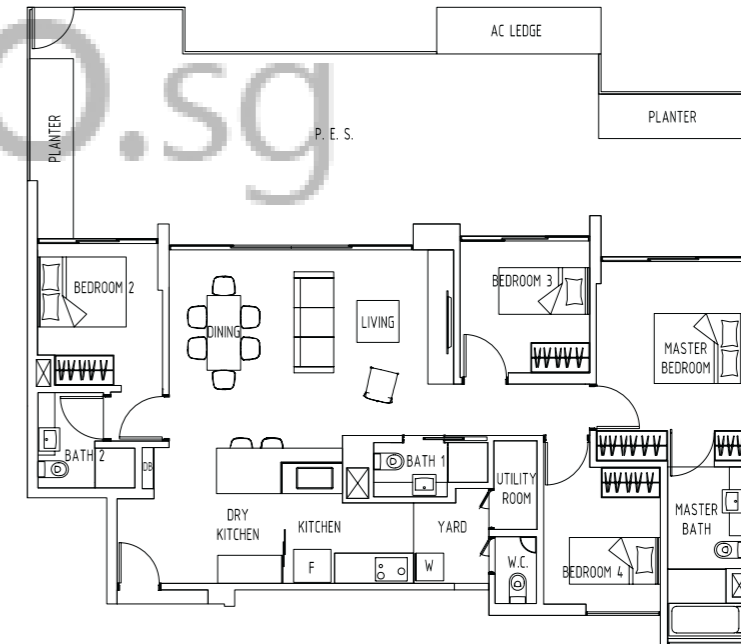
## Type E2-A

131 sqm / 1,410 sqft  
#02-10 to #05-10



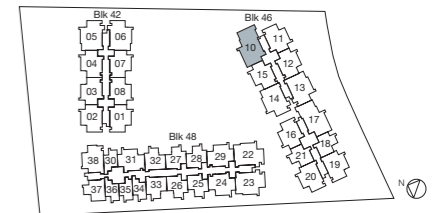
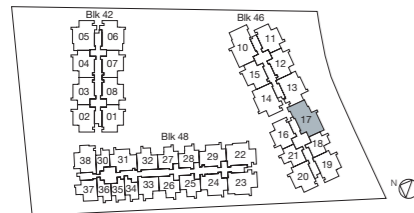
## Type E1-G

149 sqm / 1,604 sqft  
#01-17



## Type E2-G

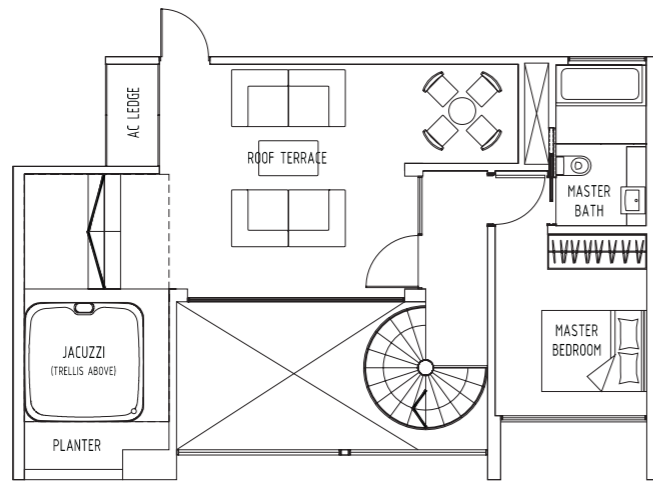
180 sqm / 1,938 sqft  
#01-10



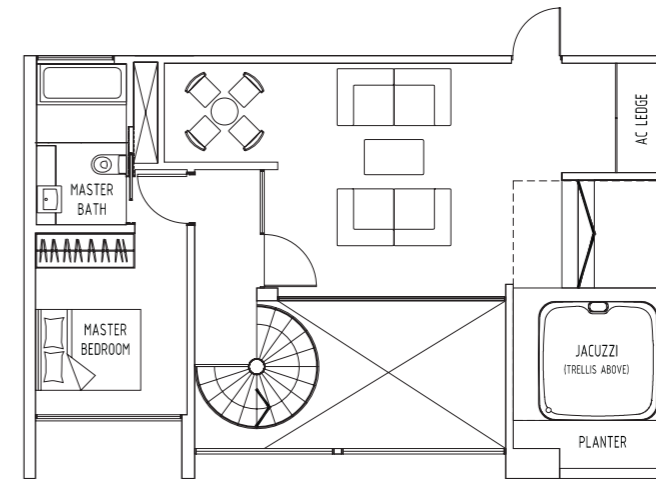
Area includes PES, A/C ledge, balcony, planter, roof terrace and strata void, if any. Some units are mirror images of the apartment plans shown in the brochure. Please refer to the key plans for orientation. All plans are not drawn to scale and are subject to changes as may be approved by the relevant authorities. All floor areas are approximate measurements only and are subject to government resurvey.

Area includes PES, A/C ledge, balcony, planter, roof terrace and strata void, if any. Some units are mirror images of the apartment plans shown in the brochure. Please refer to the key plans for orientation. All plans are not drawn to scale and are subject to changes as may be approved by the relevant authorities. All floor areas are approximate measurements only and are subject to government resurvey.

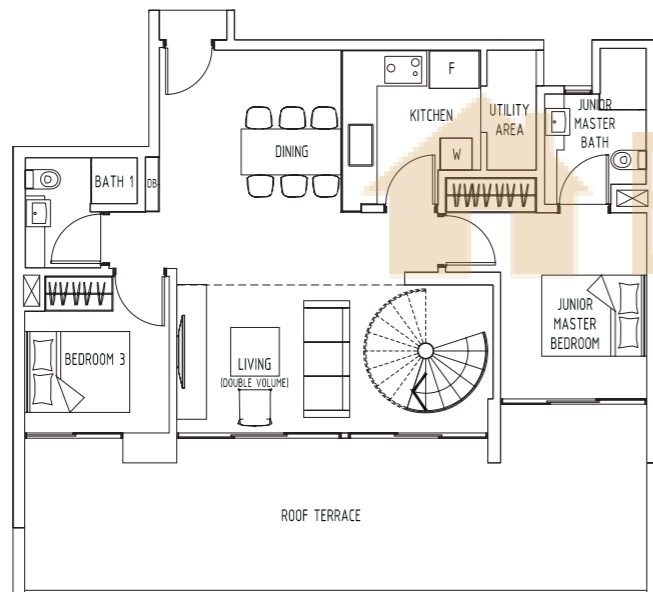




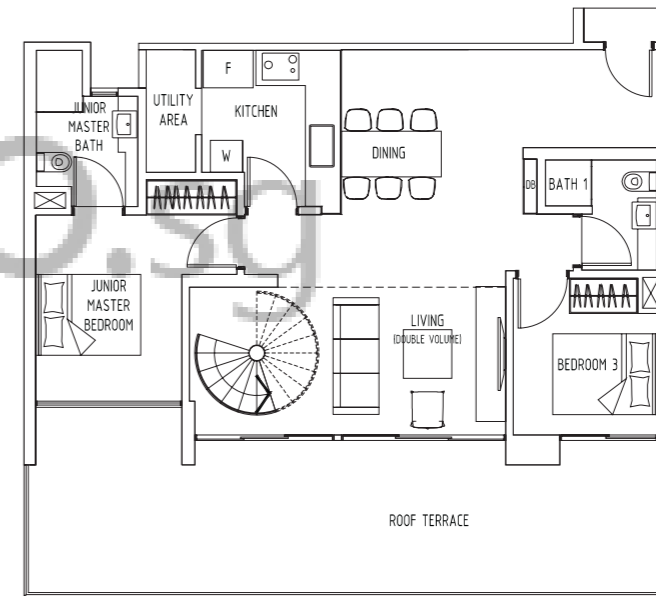
Upper Level



Upper Level



Lower Level



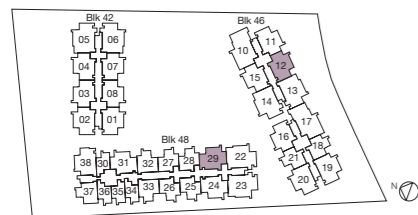
Lower Level

### Type P1

194 sqm / 2,088 sqft  
#17-12, #17-29

### Type P2

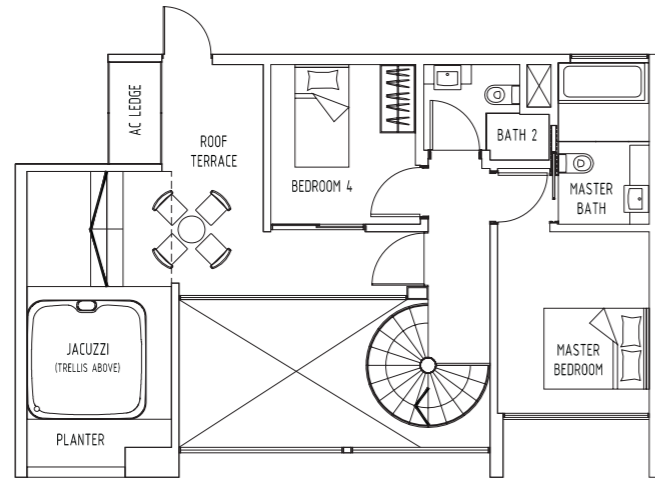
204 sqm / 2,196 sqft  
#17-19



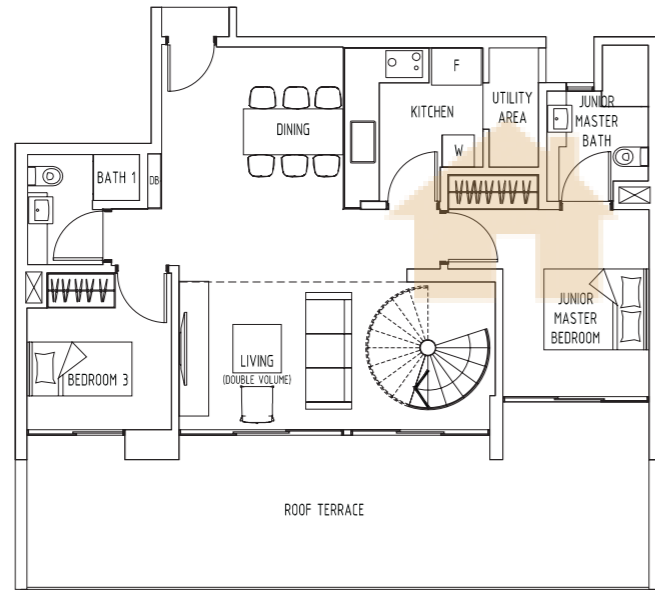
Area includes PES, A/C ledge, balcony, planter, roof terrace and strata void, if any. Some units are mirror images of the apartment plans shown in the brochure. Please refer to the key plans for orientation. All plans are not drawn to scale and are subject to changes as may be approved by the relevant authorities. All floor areas are approximate measurements only and are subject to government resurvey.



Area includes PES, A/C ledge, balcony, planter, roof terrace and strata void, if any. Some units are mirror images of the apartment plans shown in the brochure. Please refer to the key plans for orientation. All plans are not drawn to scale and are subject to changes as may be approved by the relevant authorities. All floor areas are approximate measurements only and are subject to government resurvey.



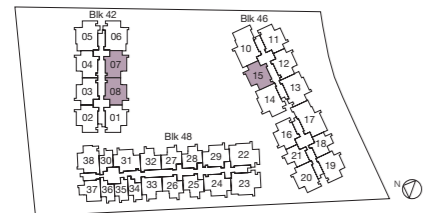
Upper Level



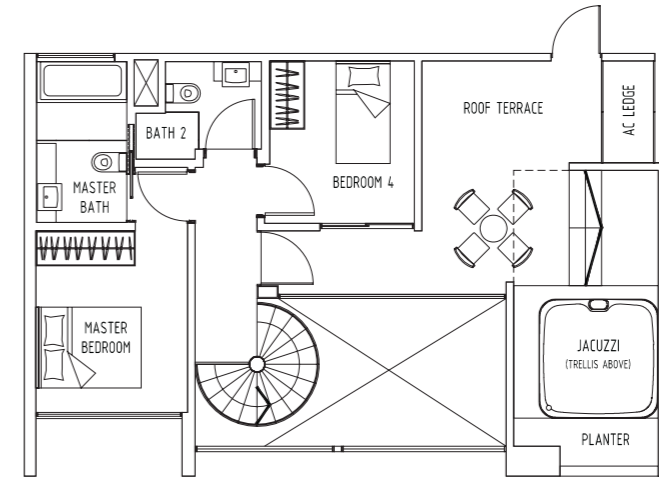
Lower Level

**Type P3**

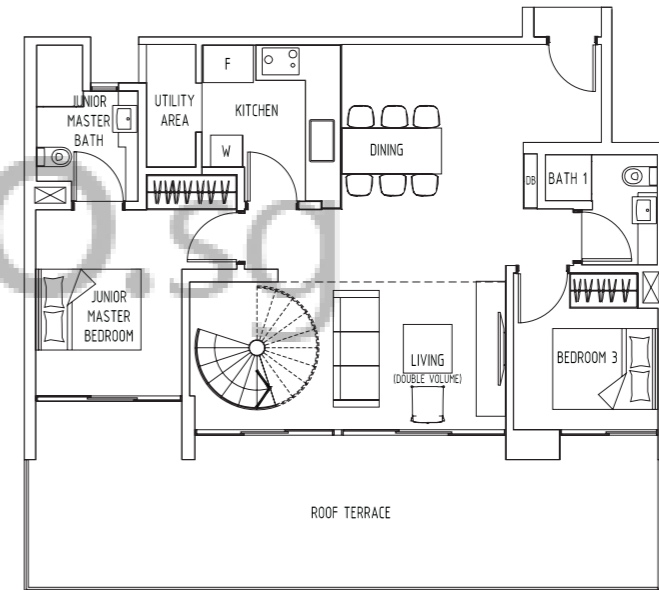
195 sqm / 2,099 sqft  
#17-07, #17-08, #17-15



Area includes PES, A/C ledge, balcony, planter, roof terrace and strata void, if any. Some units are mirror images of the apartment plans shown in the brochure. Please refer to the key plans for orientation. All plans are not drawn to scale and are subject to changes as may be approved by the relevant authorities. All floor areas are approximate measurements only and are subject to government resurvey.



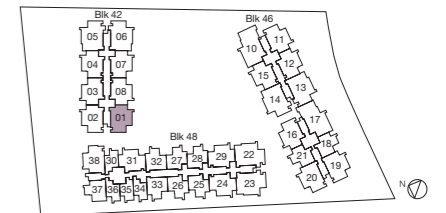
Upper Level



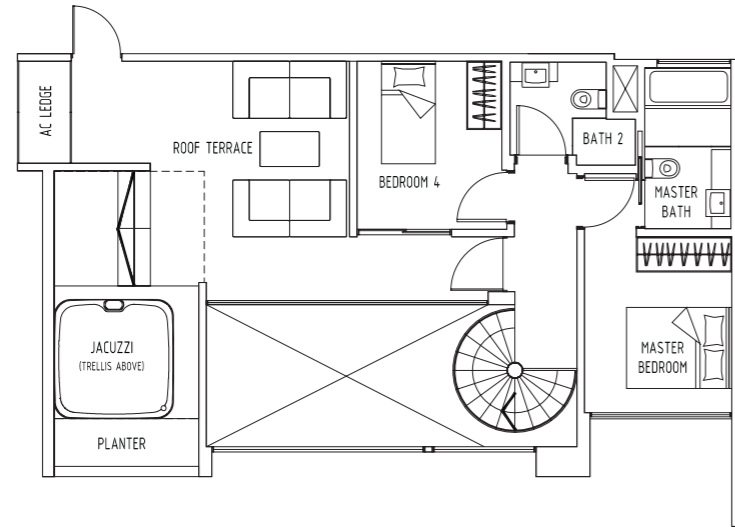
Lower Level

**Type P4**

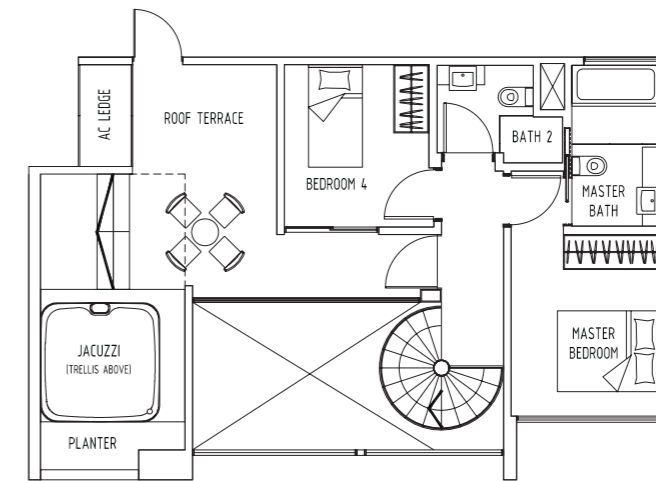
202 sqm / 2,174 sqft  
#17-01



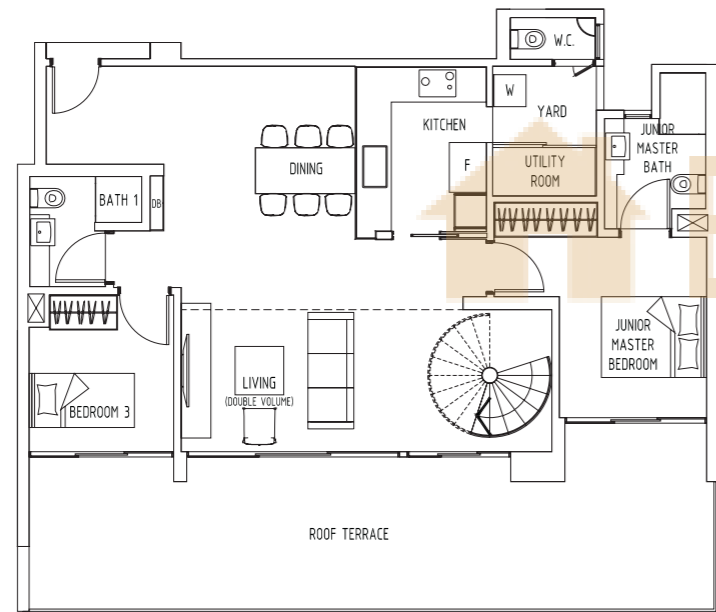
Area includes PES, A/C ledge, balcony, planter, roof terrace and strata void, if any. Some units are mirror images of the apartment plans shown in the brochure. Please refer to the key plans for orientation. All plans are not drawn to scale and are subject to changes as may be approved by the relevant authorities. All floor areas are approximate measurements only and are subject to government resurvey.



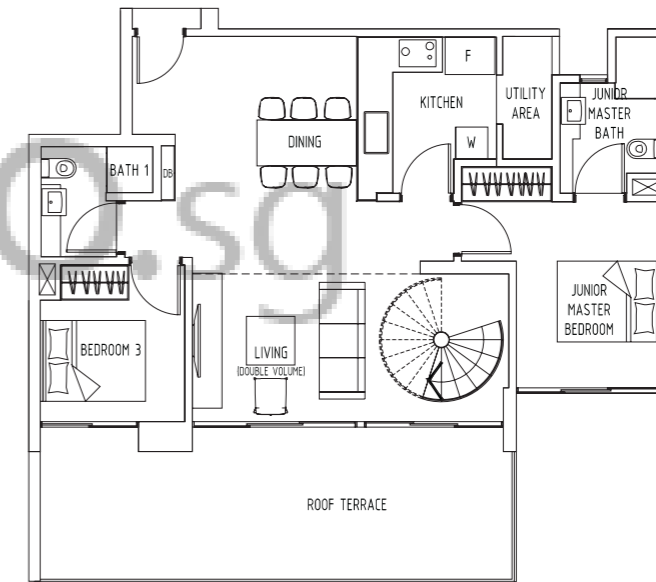
Upper Level



Upper Level



Lower Level



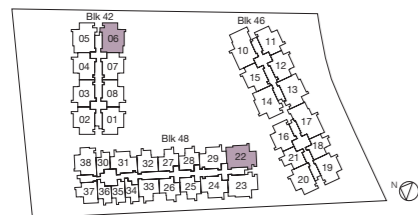
Lower Level

Type P5

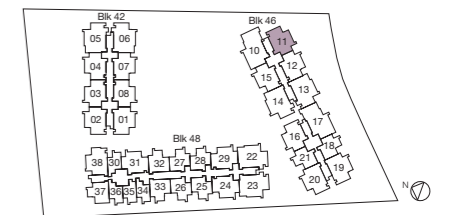
225 sqm / 2,422 sqft  
#17-06, #17-22

Type P6

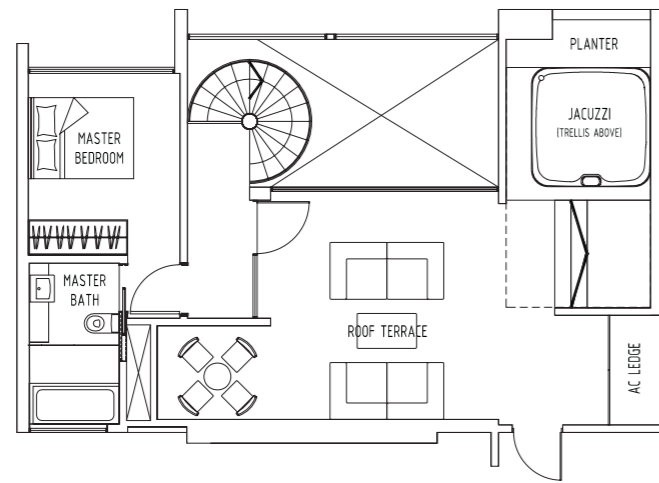
188 sqm / 2,024 sqft  
#17-11



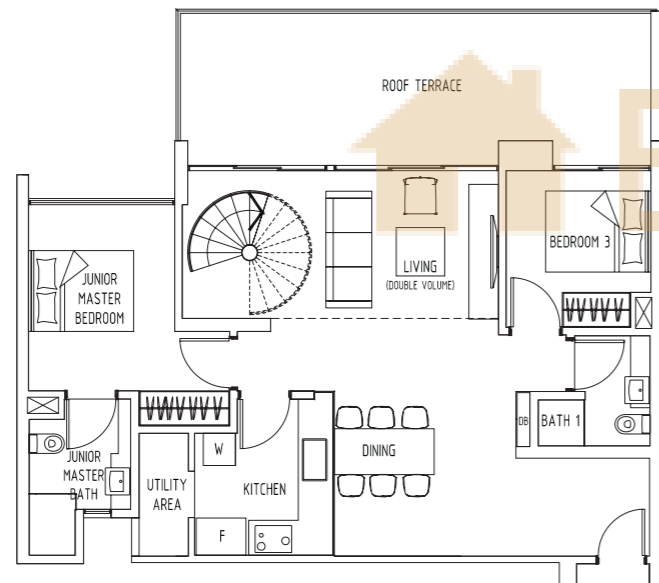
Area includes PES, A/C ledge, balcony, planter, roof terrace and strata void, if any. Some units are mirror images of the apartment plans shown in the brochure. Please refer to the key plans for orientation. All plans are not drawn to scale and are subject to changes as may be approved by the relevant authorities. All floor areas are approximate measurements only and are subject to government resurvey.



Area includes PES, A/C ledge, balcony, planter, roof terrace and strata void, if any. Some units are mirror images of the apartment plans shown in the brochure. Please refer to the key plans for orientation. All plans are not drawn to scale and are subject to changes as may be approved by the relevant authorities. All floor areas are approximate measurements only and are subject to government resurvey.



Upper Level



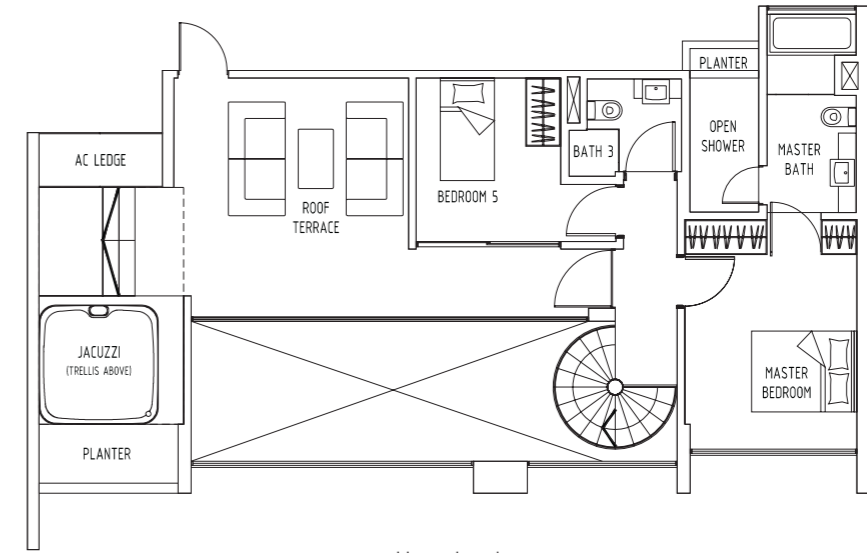
Lower Level

**Type P7**

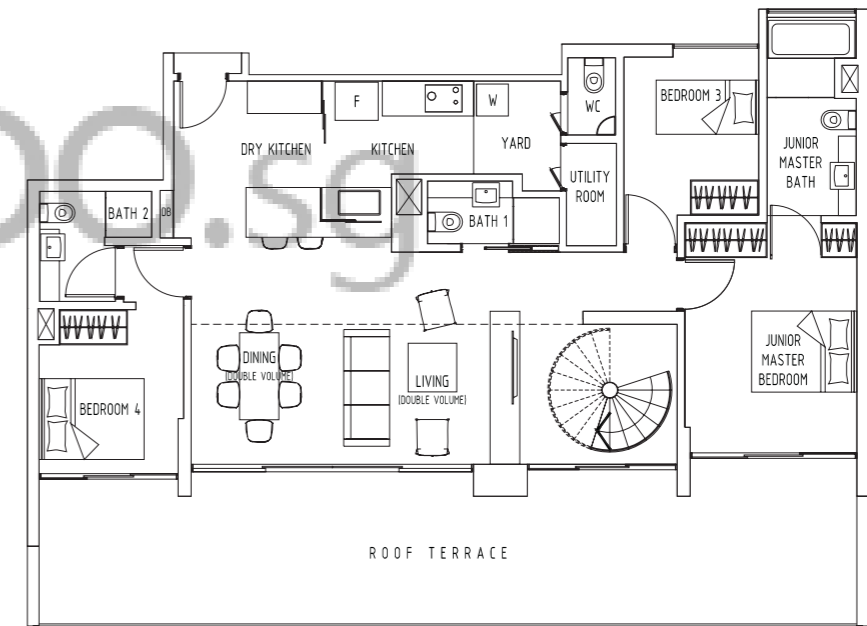
193 sqm / 2,077 sqft  
#17-20



Area includes PES, A/C ledge, balcony, planter, roof terrace and strata void, if any. Some units are mirror images of the apartment plans shown in the brochure. Please refer to the key plans for orientation. All plans are not drawn to scale and are subject to changes as may be approved by the relevant authorities. All floor areas are approximate measurements only and are subject to government resurvey.



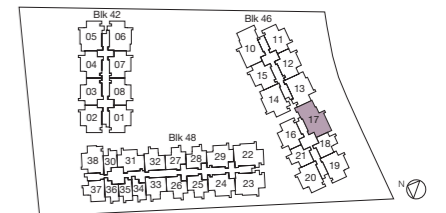
Upper Level



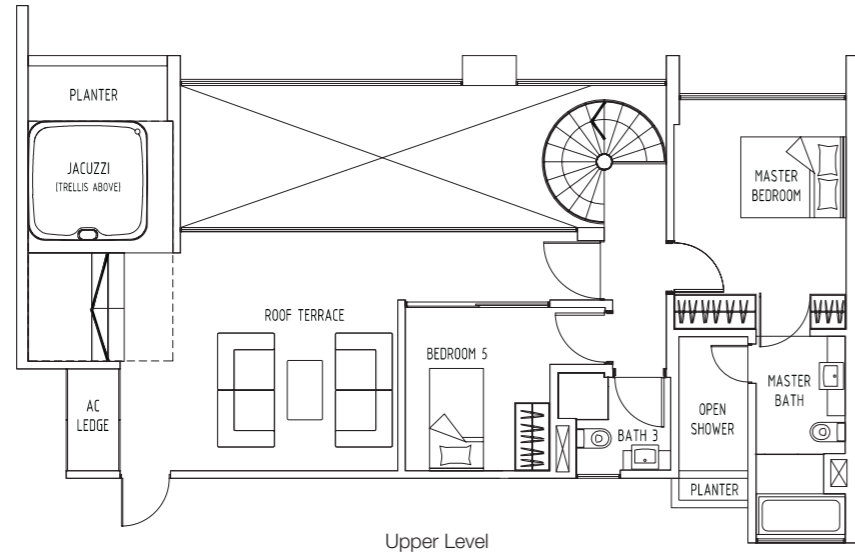
Lower Level

**Type P8**

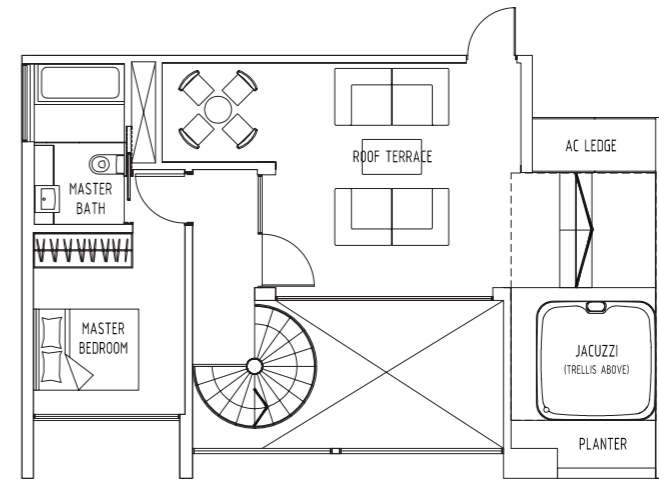
269 sqm / 2,896 sqft  
#17-17



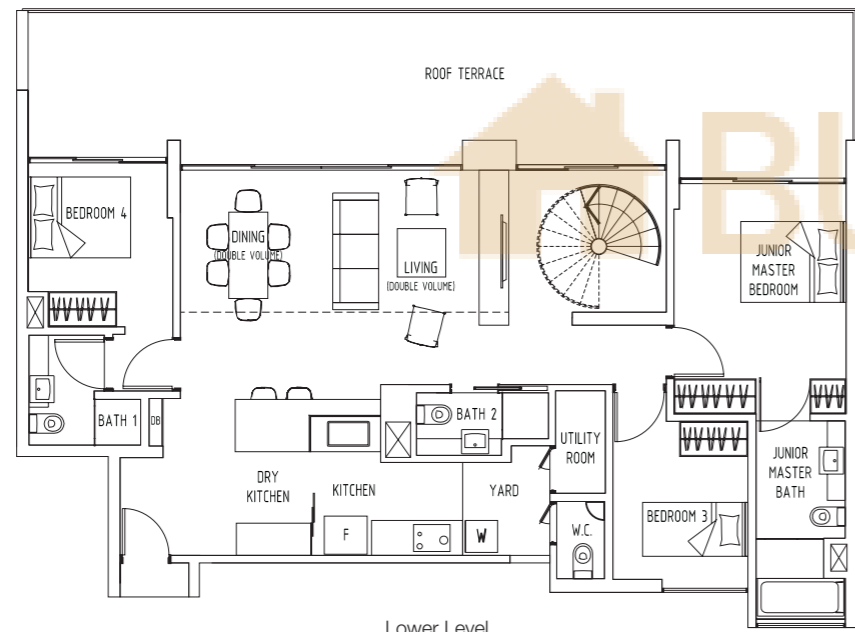
Area includes PES, A/C ledge, balcony, planter, roof terrace and strata void, if any. Some units are mirror images of the apartment plans shown in the brochure. Please refer to the key plans for orientation. All plans are not drawn to scale and are subject to changes as may be approved by the relevant authorities. All floor areas are approximate measurements only and are subject to government resurvey.



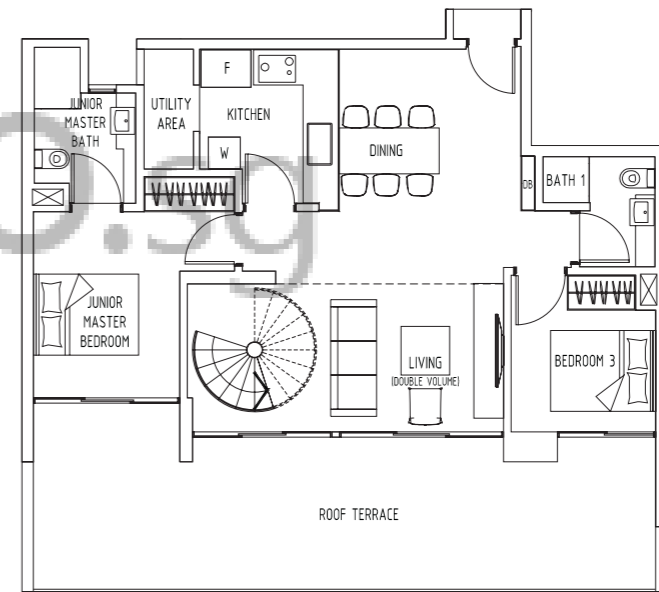
Upper Level



Upper Level



Lower Level



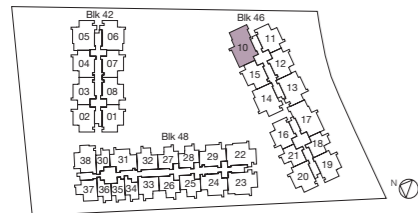
Lower Level

Type P9

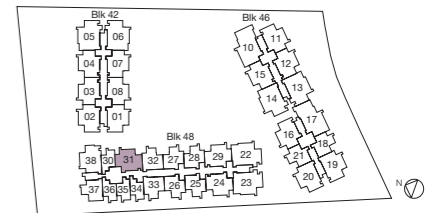
272 sqm / 2,928 sqft  
#17-10

Type P10

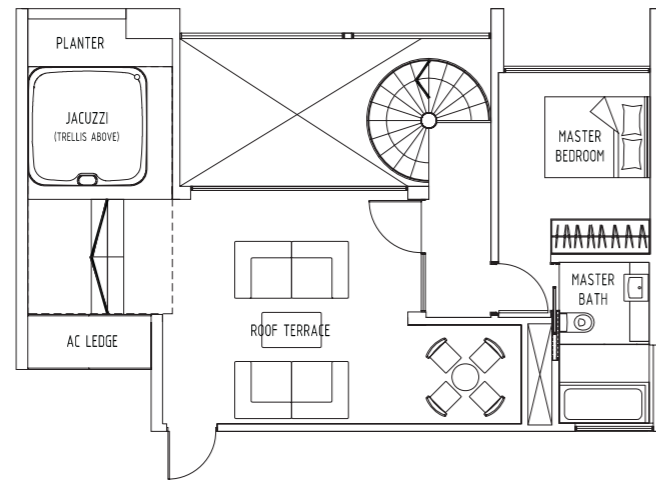
195 sqm / 2,099 sqft  
#17-31



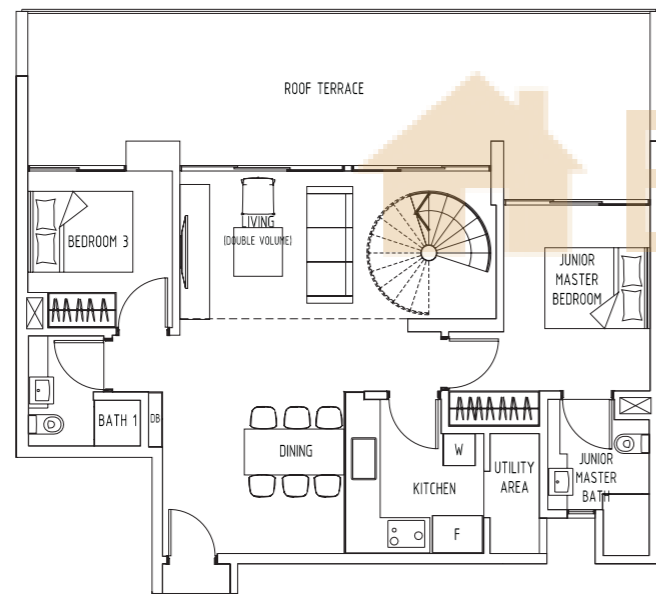
Area includes PES, A/C ledge, balcony, planter, roof terrace and strata void, if any. Some units are mirror images of the apartment plans shown in the brochure. Please refer to the key plans for orientation. All plans are not drawn to scale and are subject to changes as may be approved by the relevant authorities. All floor areas are approximate measurements only and are subject to government resurvey.



Area includes PES, A/C ledge, balcony, planter, roof terrace and strata void, if any. Some units are mirror images of the apartment plans shown in the brochure. Please refer to the key plans for orientation. All plans are not drawn to scale and are subject to changes as may be approved by the relevant authorities. All floor areas are approximate measurements only and are subject to government resurvey.



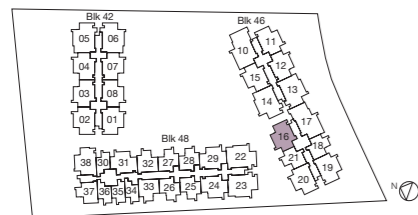
Upper Level



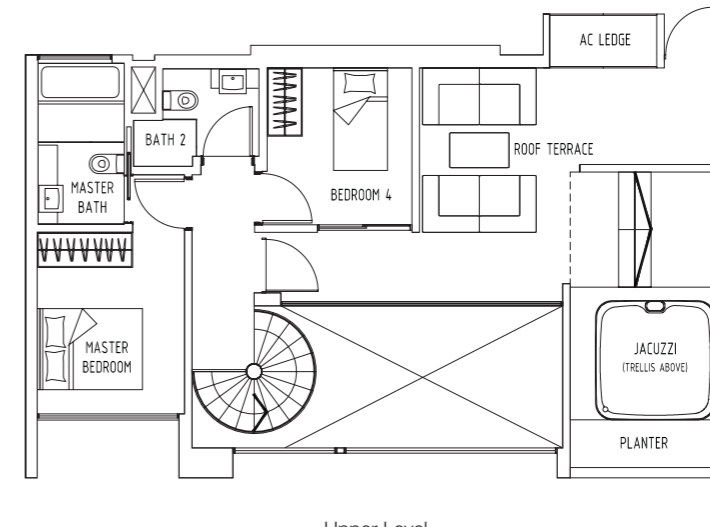
Lower Level

**Type P11**

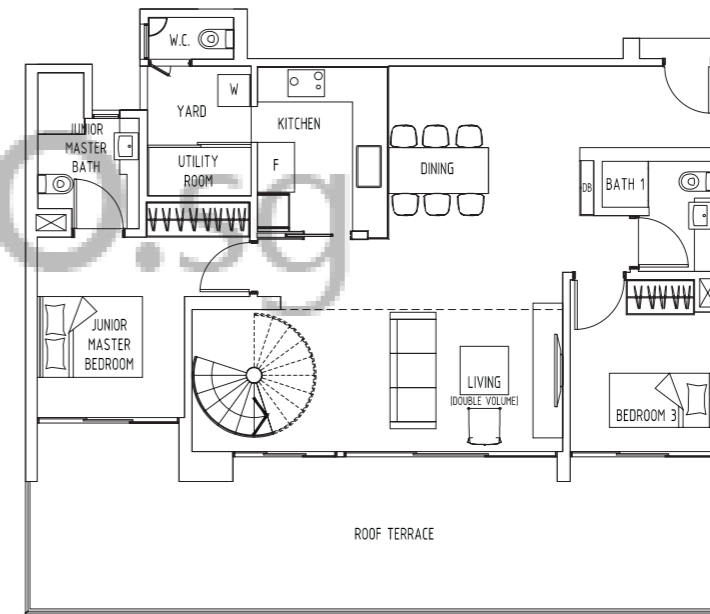
195 sqm / 2,099 sqft  
#17-16



Area includes PES, A/C ledge, balcony, planter, roof terrace and strata void, if any. Some units are mirror images of the apartment plans shown in the brochure. Please refer to the key plans for orientation. All plans are not drawn to scale and are subject to changes as may be approved by the relevant authorities. All floor areas are approximate measurements only and are subject to government resurvey.



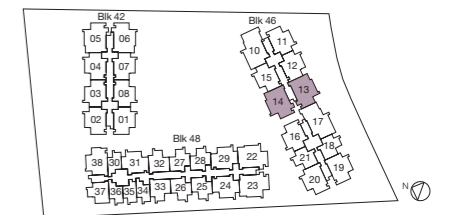
Upper Level



Lower Level

**Type P12**

224 to 225 sqm / 2,411 to 2,422 sqft  
#17-13, #17-14



Area includes PES, A/C ledge, balcony, planter, roof terrace and strata void, if any. Some units are mirror images of the apartment plans shown in the brochure. Please refer to the key plans for orientation. All plans are not drawn to scale and are subject to changes as may be approved by the relevant authorities. All floor areas are approximate measurements only and are subject to government resurvey.