

LUXURY EVERYWHERE

To complement your luxury abode, only the finest of fittings and finishes shall accentuate the exquisiteness of your home with sophistication and style. From brands synonymous with top quality, to thoughtful designs, you can truly be at home with luxury.

Sanitary Fittings



Pure Freude
an Wasser

Kitchen Appliances



Kitchen Appliances

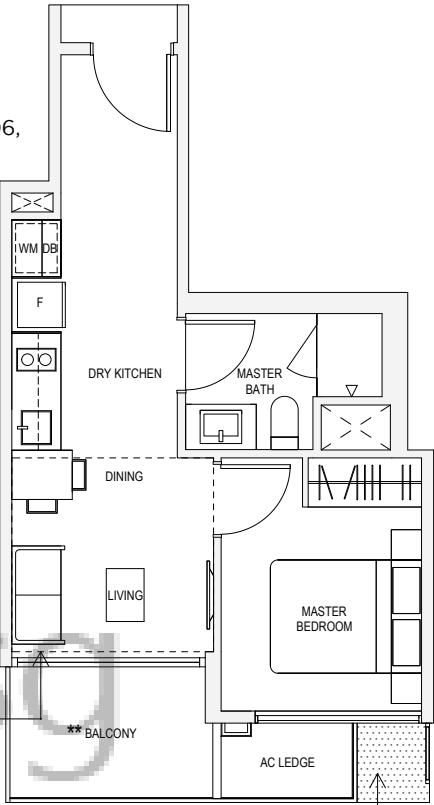


TYPE A1
43sqm / 463sqft
#02-06, #03-06, #04-06,
#02-31, #03-31, #04-31

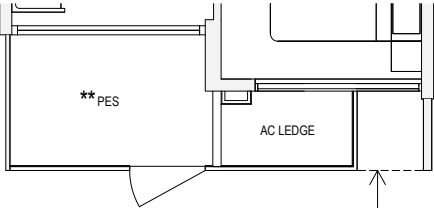
TYPE A1H
50sqm / 538sqft*
#05-06, #05-31

* AREA OF 50sqm / 538sqft IS INCLUSIVE OF STRATA VOID AREA OF 7sqm / 75sqft ABOVE LIVING AND DINING AS PER DOTTED LINE

TYPE A1P
43sqm / 463sqft
#01-06, #01-31



RC LEDGE AT 2ND AND 4TH STOREY ONLY (NOT ACCESSIBLE AND NON-STRATA AREA)



OVERHEAD RC LEDGE



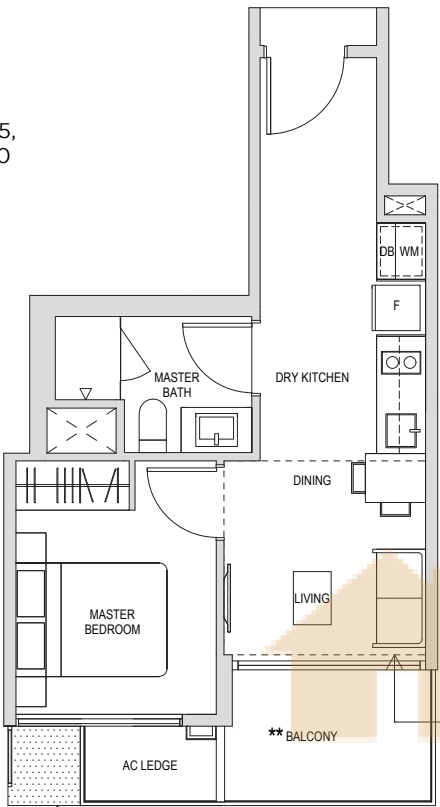
Key plan not to scale.

** The PES/ balcony shall not be enclosed. Only URA approved balcony screens are to be used. For an illustration of the approved balcony screen, please refer to page 82 of this brochure.

Note: Areas include A/C Ledge, balcony, PES, open to sky yard and strata void where applicable. Orientations and facings will differ depending on the unit you are purchasing, please refer to the key plan. Plans are not to scale and subject to change as may be required or approved by the relevant authorities. All areas are subject to final survey.

TYPE A2

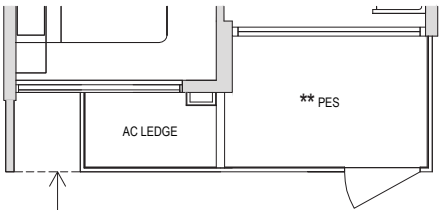
43sqm / 463sqft
#02-05, #03-05, #04-05,
#02-30, #03-30, #04-30



RC LEDGE AT 2ND AND 4TH STOREY ONLY (NOT ACCESSIBLE AND NON-STRATA AREA)

TYPE A2P

43sqm / 463sqft
#01-05, #01-30



OVERHEAD RC LEDGE

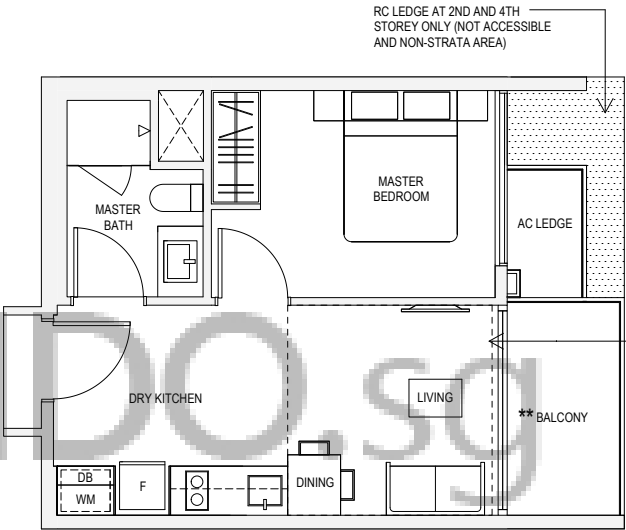
TYPE A2H

50sqm / 538sqft*
#05-05, #05-30

* AREA OF 50sqm / 538sqft IS INCLUSIVE OF STRATA VOID AREA OF 7sqm / 75sqft ABOVE LIVING AND DINING AS PER DOTTED LINE

TYPE A3

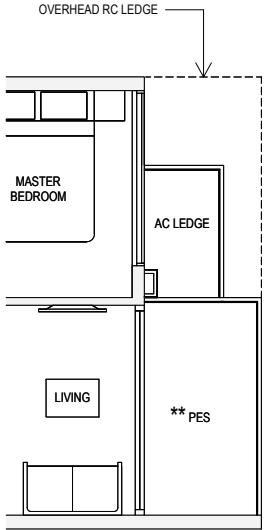
43sqm / 463sqft
#02-03, #03-03, #04-03,
#02-28, #03-28, #04-28



RC LEDGE AT 2ND AND 4TH STOREY ONLY (NOT ACCESSIBLE AND NON-STRATA AREA)

TYPE A3P

43sqm / 463sqft
#01-03



OVERHEAD RC LEDGE

TYPE A3H

51sqm / 549sqft*
#05-03, #05-28

* AREA OF 51sqm / 549sqft IS INCLUSIVE OF STRATA VOID AREA OF 8sqm / 86sqft ABOVE LIVING AND DINING AS PER DOTTED LINE



Key plan not to scale.

** The PES/ balcony shall not be enclosed. Only URA approved balcony screens are to be used. For an illustration of the approved balcony screen, please refer to page 82 of this brochure

Note: Areas include A/C Ledge, balcony, PES, open to sky yard and strata void where applicable. Orientations and facings will differ depending on the unit you are purchasing, please refer to the key plan. Plans are not to scale and subject to change as may be required or approved by the relevant authorities. All areas are subject to final survey.



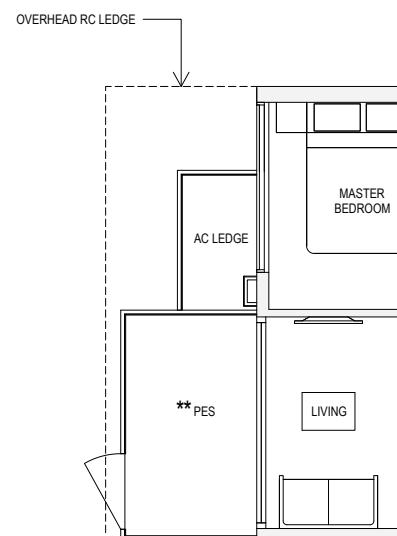
Key plan not to scale.

** The PES/ balcony shall not be enclosed. Only URA approved balcony screens are to be used. For an illustration of the approved balcony screen, please refer to page 82 of this brochure

Note: Areas include A/C Ledge, balcony, PES, open to sky yard and strata void where applicable. Orientations and facings will differ depending on the unit you are purchasing, please refer to the key plan. Plans are not to scale and subject to change as may be required or approved by the relevant authorities. All areas are subject to final survey.

TYPE A4P

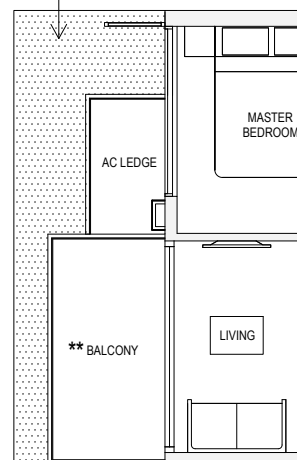
45sqm / 484sqft
#01-08, #01-33



TYPE A4

44sqm / 474sqft
#02-08, #04-08,
#02-33, #04-33

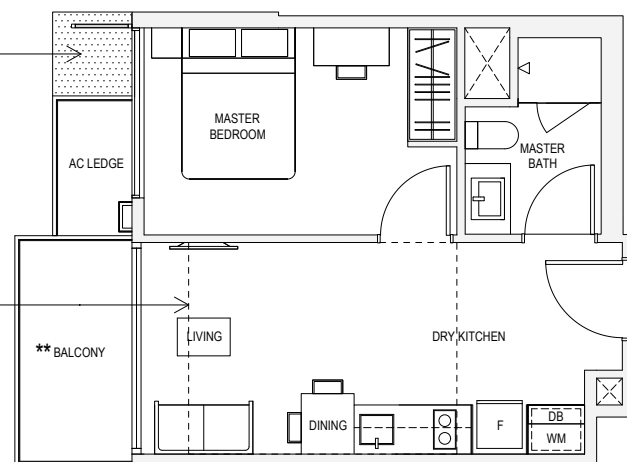
RC LEDGE AT 2ND AND
4TH STOREY ONLY
(NOT ACCESSIBLE AND
NON-STRATA AREA)



TYPE A4

44sqm / 474sqft
#03-08,
#03-33, #05-33

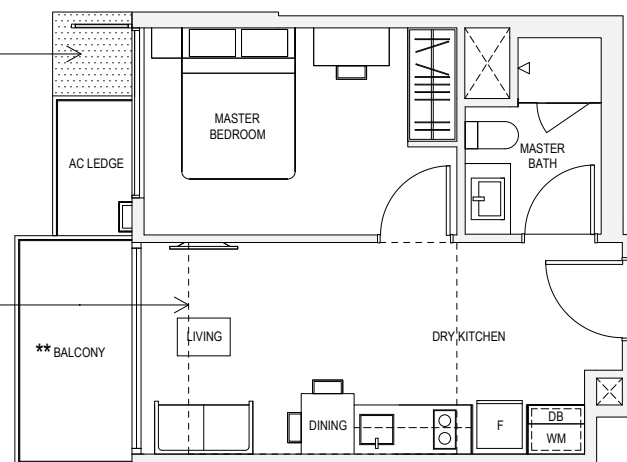
RC LEDGE AT 3RD AND
5TH STOREY ONLY
(NOT ACCESSIBLE AND
NON-STRATA AREA)



TYPE A4H

55sqm / 592sqft*
#05-08

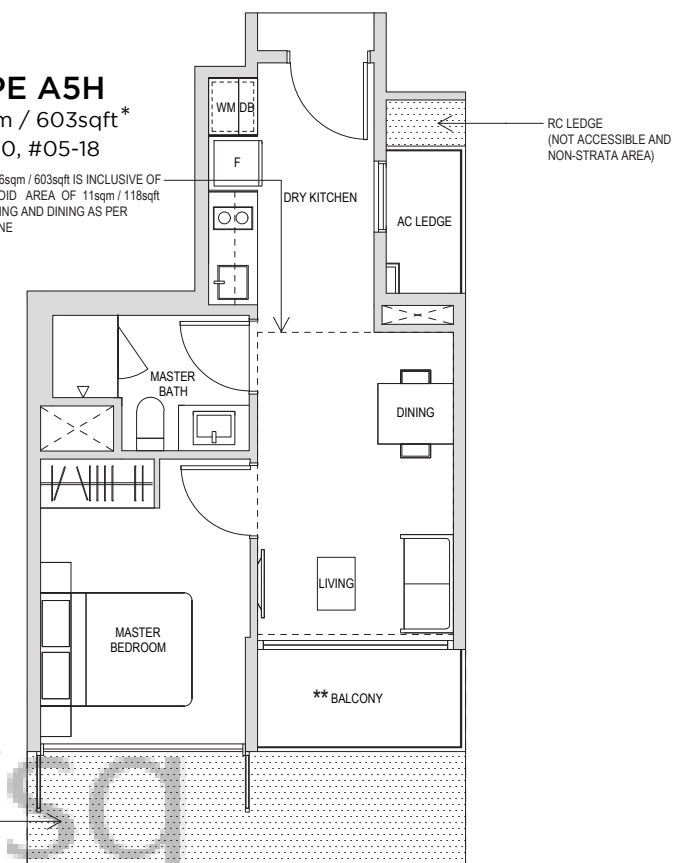
* AREA OF 55sqm / 592sqft IS INCLUSIVE OF
STRATA VOID AREA OF 11sqm / 118sqft
ABOVE LIVING AND DINING AS PER
DOTTED LINE



TYPE A5H

56sqm / 603sqft*
#05-10, #05-18

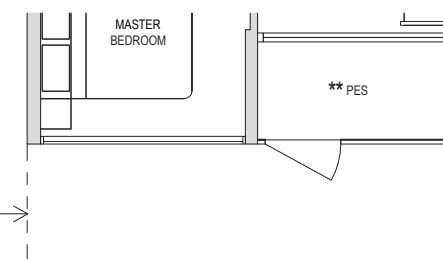
* AREA OF 56sqm / 603sqft IS INCLUSIVE OF
STRATA VOID AREA OF 11sqm / 118sqft
ABOVE LIVING AND DINING AS PER
DOTTED LINE



TYPE A5

45sqm / 484sqft
#02-10, #03-10, #04-10,
#02-18, #03-18, #04-18

RC LEDGE AT 2ND AND
4TH STOREY ONLY
(NOT ACCESSIBLE AND
NON-STRATA AREA)



TYPE A5P

45sqm / 484sqft
#01-10 #01-18



Key plan not to scale.

** The PES/ balcony shall not be enclosed. Only URA approved balcony screens are to be used. For an illustration of the approved balcony screen, please refer to page 82 of this brochure

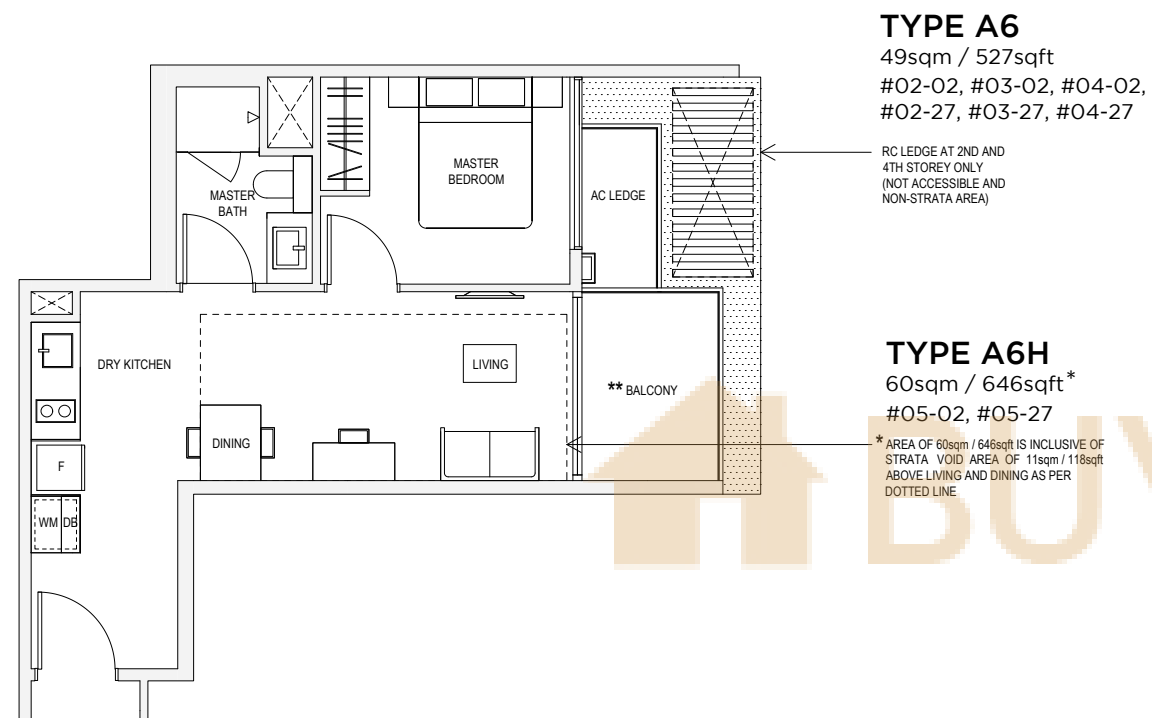
Note: Areas include A/C Ledge, balcony, PES, open to sky yard and strata void where applicable. Orientations and facings will differ depending on the unit you are purchasing, please refer to the key plan. Plans are not to scale and subject to change as may be required or approved by the relevant authorities. All areas are subject to final survey.



Key plan not to scale.

** The PES/ balcony shall not be enclosed. Only URA approved balcony screens are to be used. For an illustration of the approved balcony screen, please refer to page 82 of this brochure

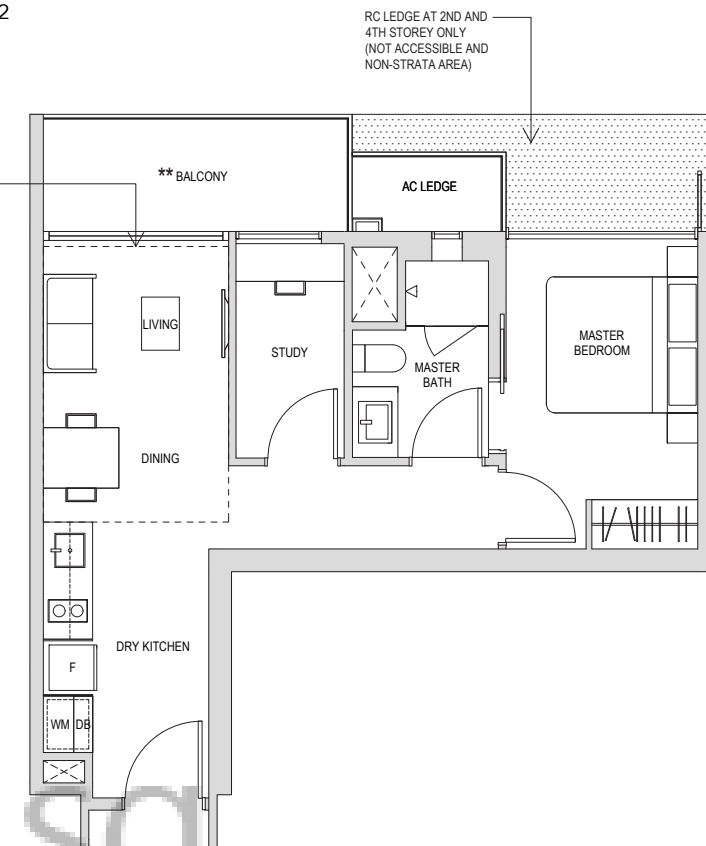
Note: Areas include A/C Ledge, balcony, PES, open to sky yard and strata void where applicable. Orientations and facings will differ depending on the unit you are purchasing, please refer to the key plan. Plans are not to scale and subject to change as may be required or approved by the relevant authorities. All areas are subject to final survey.



TYPE A7
56sqm / 603sqft
#02-14, #03-14, #04-14,
#02-22, #03-22, #04-22

TYPE A7H
66sqm / 710sqft*
#05-14, #05-22

* AREA OF 66sqm / 710sqft IS INCLUSIVE OF STRATA VOID AREA OF 10sqm / 108sqft ABOVE LIVING AND DINING AS PER DOTTED LINE



TYPE A7P
56sqm / 603sqft
#01-14, #01-22



Key plan not to scale.

** The PES/ balcony shall not be enclosed. Only URA approved balcony screens are to be used. For an illustration of the approved balcony screen, please refer to page 82 of this brochure

Note: Areas include A/C Ledge, balcony, PES, open to sky yard and strata void where applicable. Orientations and facings will differ depending on the unit you are purchasing, please refer to the key plan. Plans are not to scale and subject to change as may be required or approved by the relevant authorities. All areas are subject to final survey.



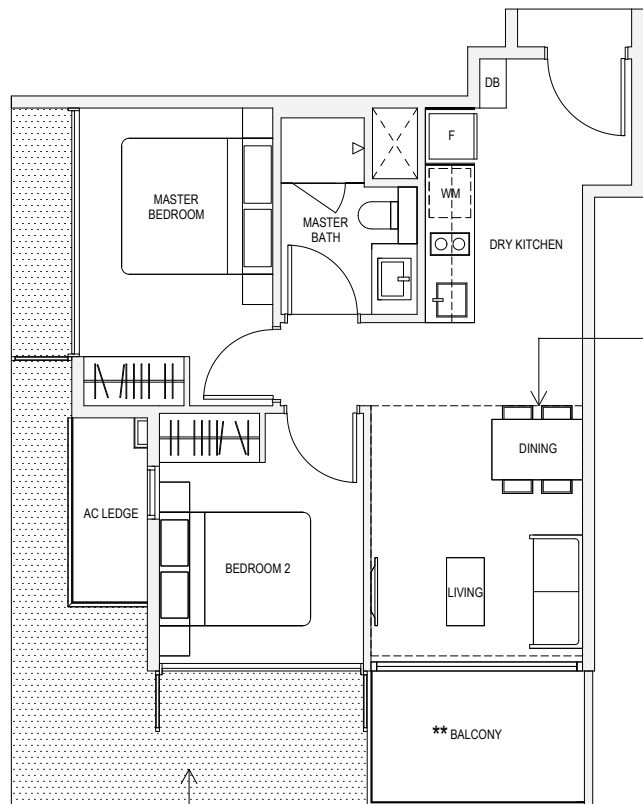
Key plan not to scale.

** The PES/ balcony shall not be enclosed. Only URA approved balcony screens are to be used. For an illustration of the approved balcony screen, please refer to page 82 of this brochure

Note: Areas include A/C Ledge, balcony, PES, open to sky yard and strata void where applicable. Orientations and facings will differ depending on the unit you are purchasing, please refer to the key plan. Plans are not to scale and subject to change as may be required or approved by the relevant authorities. All areas are subject to final survey.

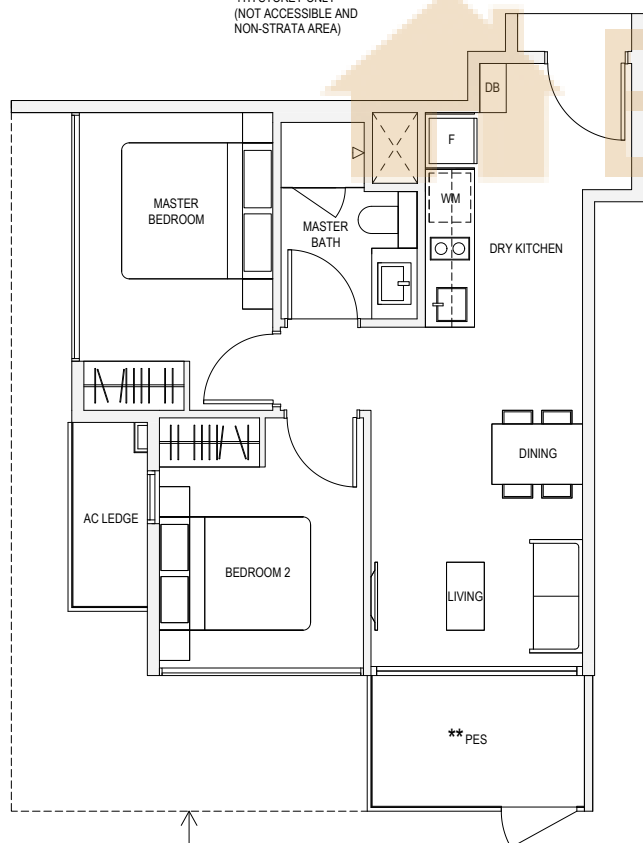
TYPE B1

60sqm / 646sqft
 #02-07, #03-07, #04-07,
 #02-32, #03-32, #04-32

**TYPE B1H**

70sqm / 753sqft*
 #05-07, #05-32

* AREA OF 70sqm / 753sqft IS INCLUSIVE OF STRATA VOID AREA OF 10sqm / 108sqft ABOVE LIVING AND DINING AS PER DOTTED LINE

**TYPE B1P**

60sqm / 646sqft
 #01-07, #01-32



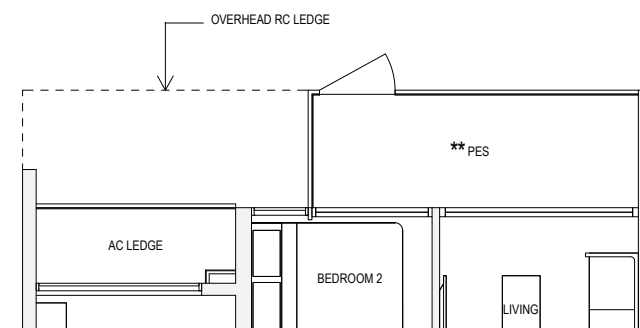
Key plan not to scale.

** The PES/ balcony shall not be enclosed. Only URA approved balcony screens are to be used. For an illustration of the approved balcony screen, please refer to page 82 of this brochure

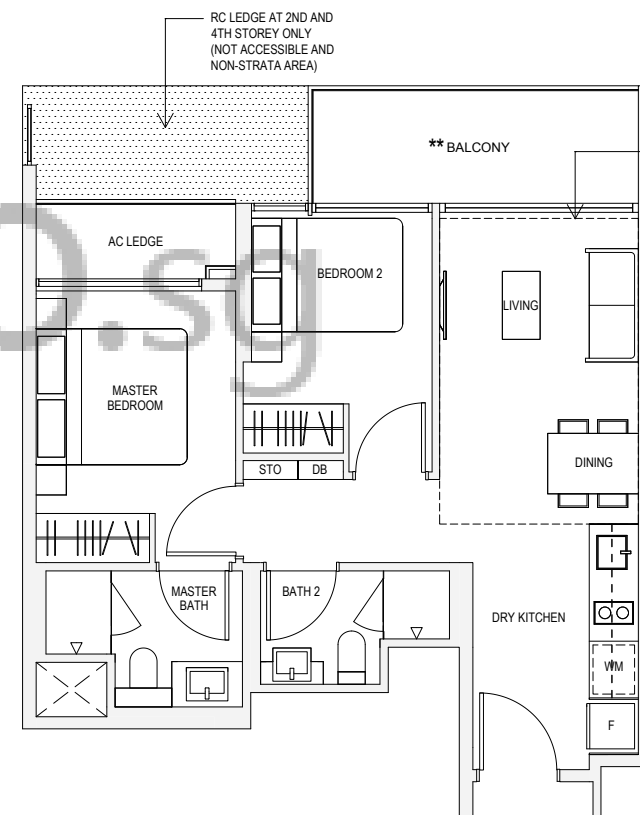
Note: Areas include A/C Ledge, balcony, PES, open to sky yard and strata void where applicable. Orientations and facings will differ depending on the unit you are purchasing, please refer to the key plan. Plans are not to scale and subject to change as may be required or approved by the relevant authorities. All areas are subject to final survey.

TYPE B2P

64sqm / 689sqft
 #01-13, #01-21

**TYPE B2**

64sqm / 689sqft
 #02-13, #03-13, #04-13,
 #02-21, #03-21, #04-21

**TYPE B2H**

75sqm / 807sqft*
 #05-13, #05-21

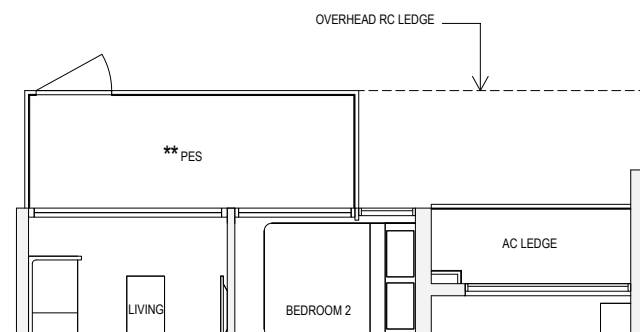
* AREA OF 75sqm / 807sqft IS INCLUSIVE OF STRATA VOID AREA OF 11sqm / 118sqft ABOVE LIVING AND DINING AS PER DOTTED LINE



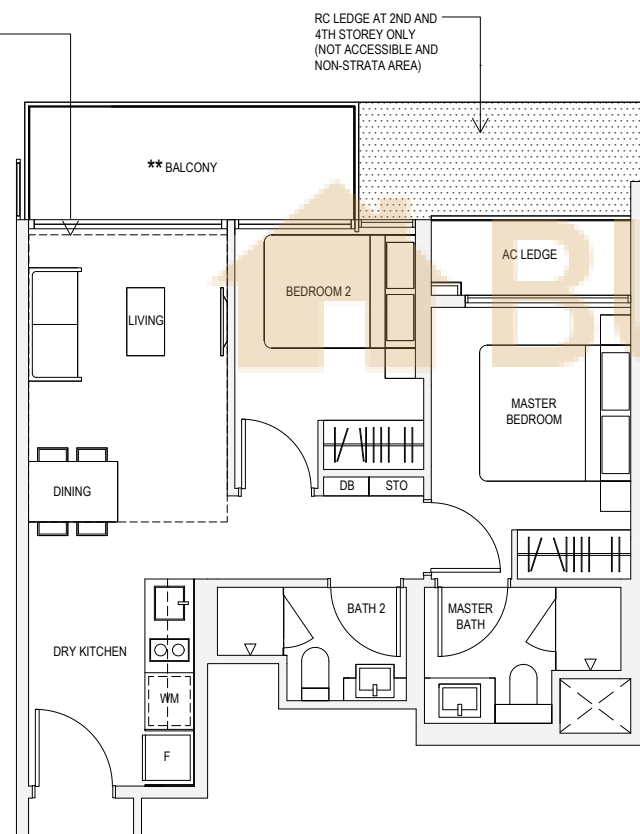
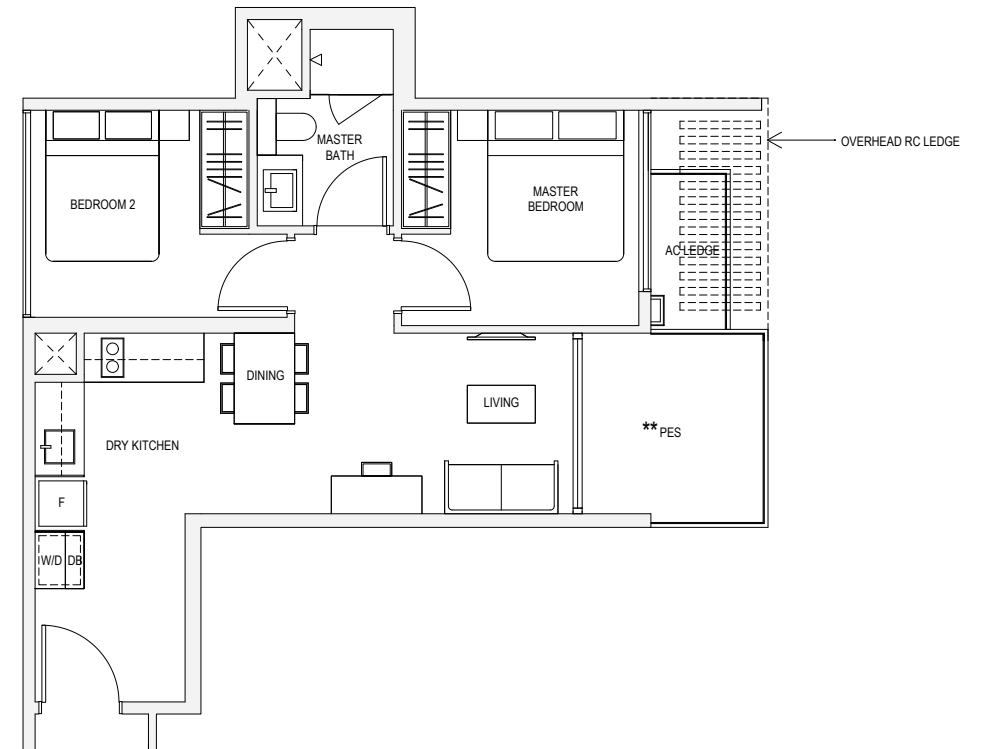
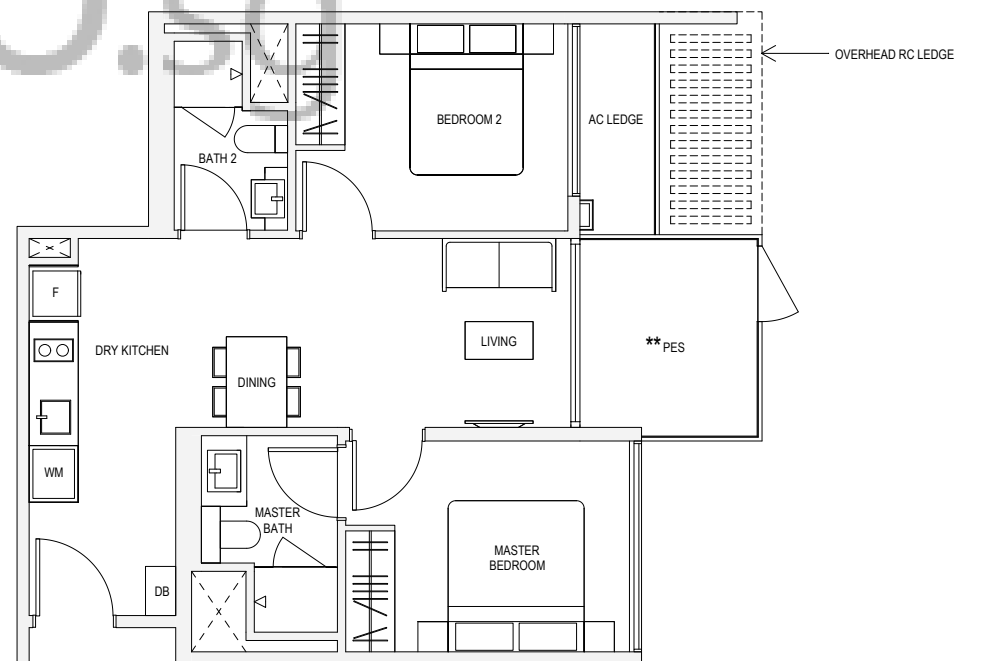
Key plan not to scale.

** The PES/ balcony shall not be enclosed. Only URA approved balcony screens are to be used. For an illustration of the approved balcony screen, please refer to page 82 of this brochure

Note: Areas include A/C Ledge, balcony, PES, open to sky yard and strata void where applicable. Orientations and facings will differ depending on the unit you are purchasing, please refer to the key plan. Plans are not to scale and subject to change as may be required or approved by the relevant authorities. All areas are subject to final survey.

TYPE B3P65sqm / 700sqft
#01-15, #01-23**TYPE B3**65sqm / 700sqft
#02-15, #03-15, #04-15,
#02-23, #03-23, #04-23**TYPE B3H**76sqm / 818sqft*
#05-15, #05-23

* AREA OF 76sqm / 818sqft IS INCLUSIVE OF STRATA VOID AREA OF 11sqm / 118sqft ABOVE LIVING AND DINING AS PER DOTTED LINE

**TYPE B4P**61sqm / 657sqft
#01-02**TYPE B5P**69sqm / 743sqft
#01-27

Key plan not to scale.

** The PES/ balcony shall not be enclosed. Only URA approved balcony screens are to be used. For an illustration of the approved balcony screen, please refer to page 82 of this brochure

Note: Areas include A/C Ledge, balcony, PES, open to sky yard and strata void where applicable. Orientations and facings will differ depending on the unit you are purchasing, please refer to the key plan. Plans are not to scale and subject to change as may be required or approved by the relevant authorities. All areas are subject to final survey.

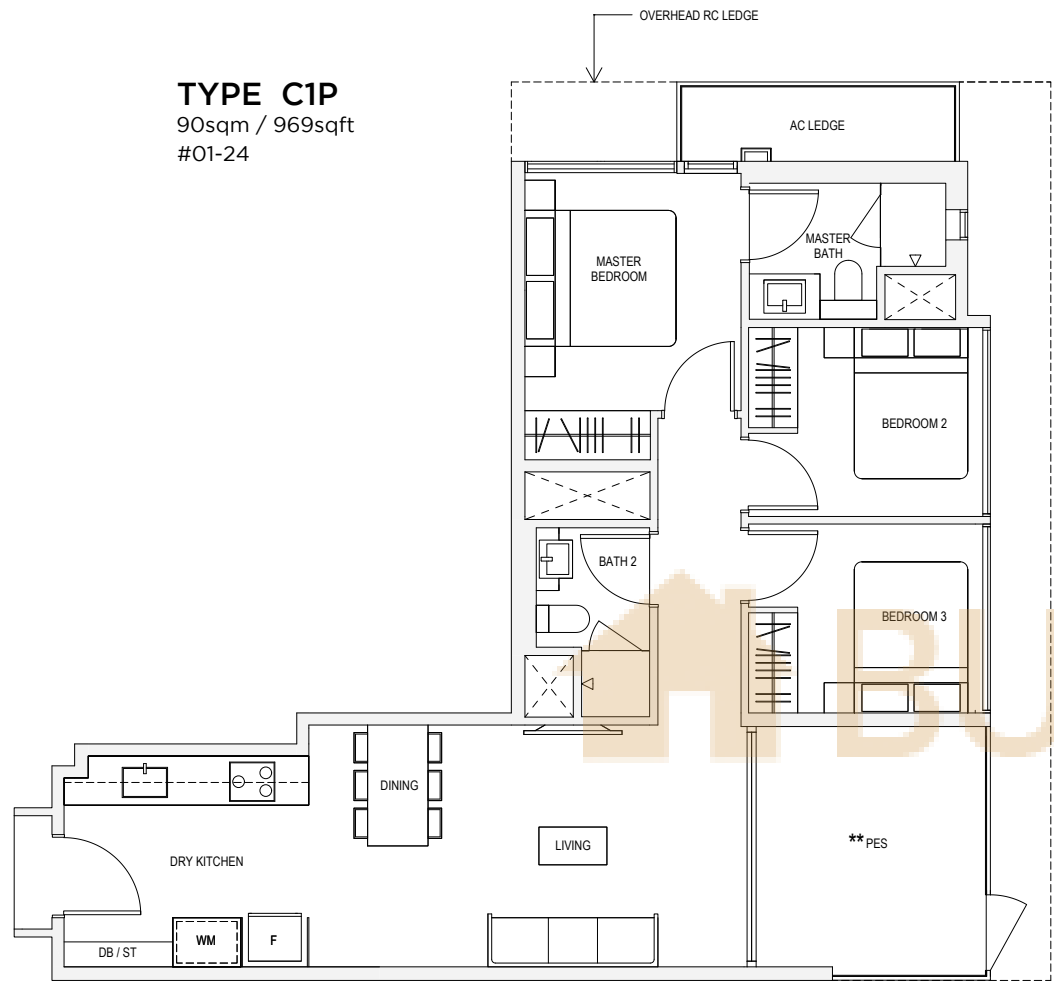


Key plan not to scale.

** The PES/ balcony shall not be enclosed. Only URA approved balcony screens are to be used. For an illustration of the approved balcony screen, please refer to page 82 of this brochure

Note: Areas include A/C Ledge, balcony, PES, open to sky yard and strata void where applicable. Orientations and facings will differ depending on the unit you are purchasing, please refer to the key plan. Plans are not to scale and subject to change as may be required or approved by the relevant authorities. All areas are subject to final survey.

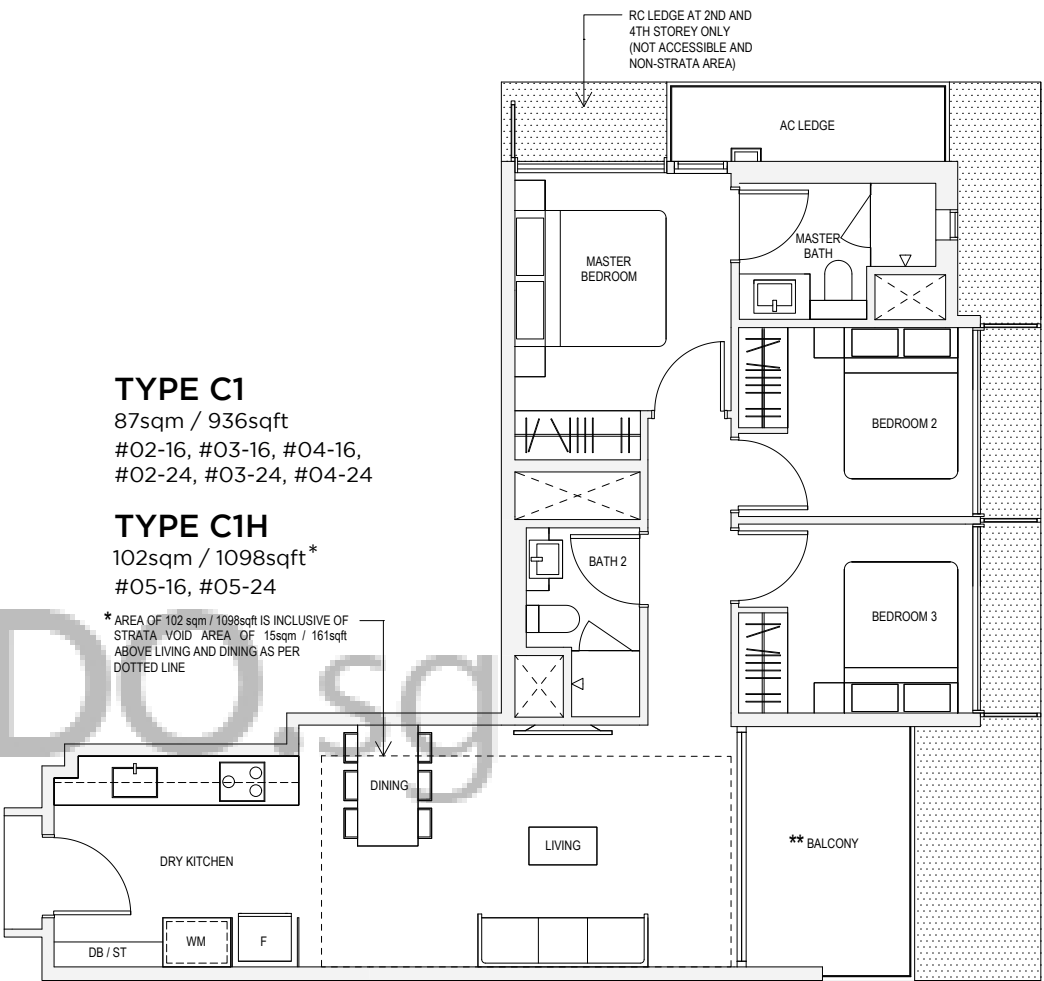
TYPE C1P
90sqm / 969sqft
#01-24



TYPE C1
87sqm / 936sqft
#02-16, #03-16, #04-16,
#02-24, #03-24, #04-24

TYPE C1H
102sqm / 1098sqft*
#05-16, #05-24

* AREA OF 102 sqm / 1098sqft IS INCLUSIVE OF STRATA VOID AREA OF 15sqm / 161sqft ABOVE LIVING AND DINING AS PER DOTTED LINE



Key plan not to scale.

** The PES/ balcony shall not be enclosed. Only URA approved balcony screens are to be used. For an illustration of the approved balcony screen, please refer to page 82 of this brochure

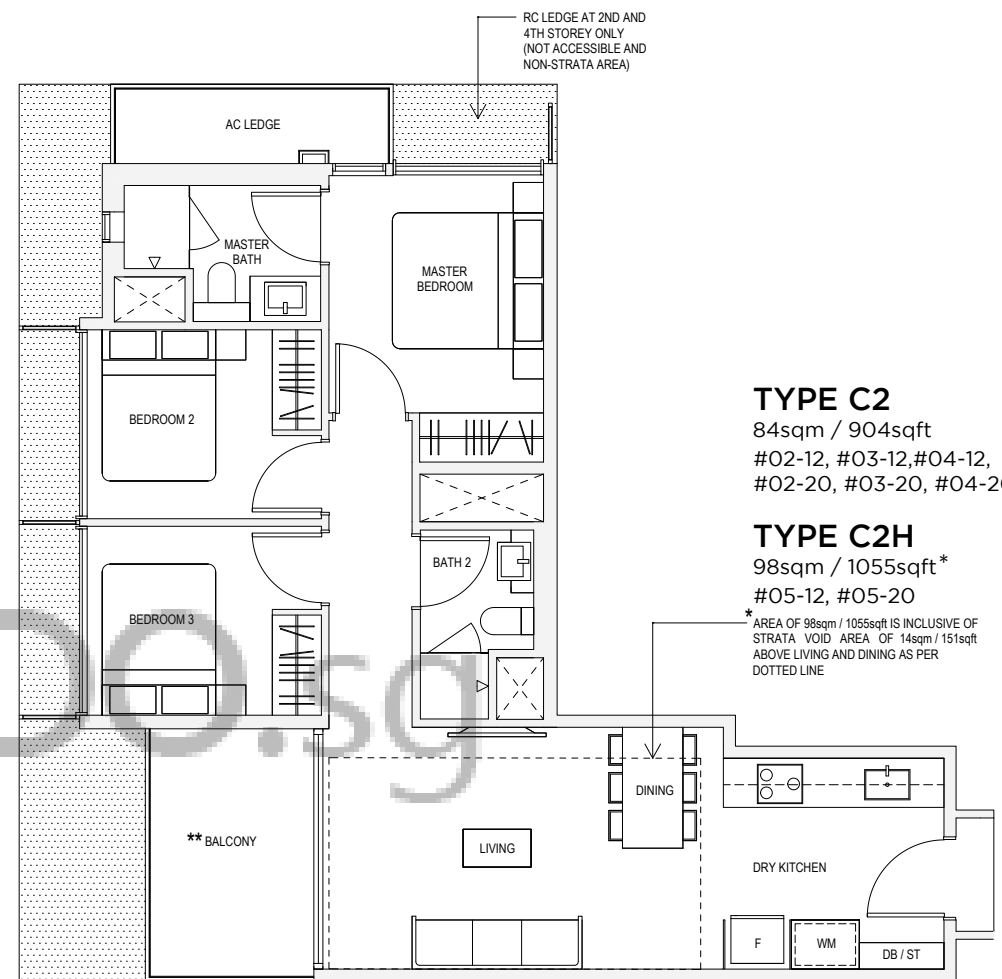
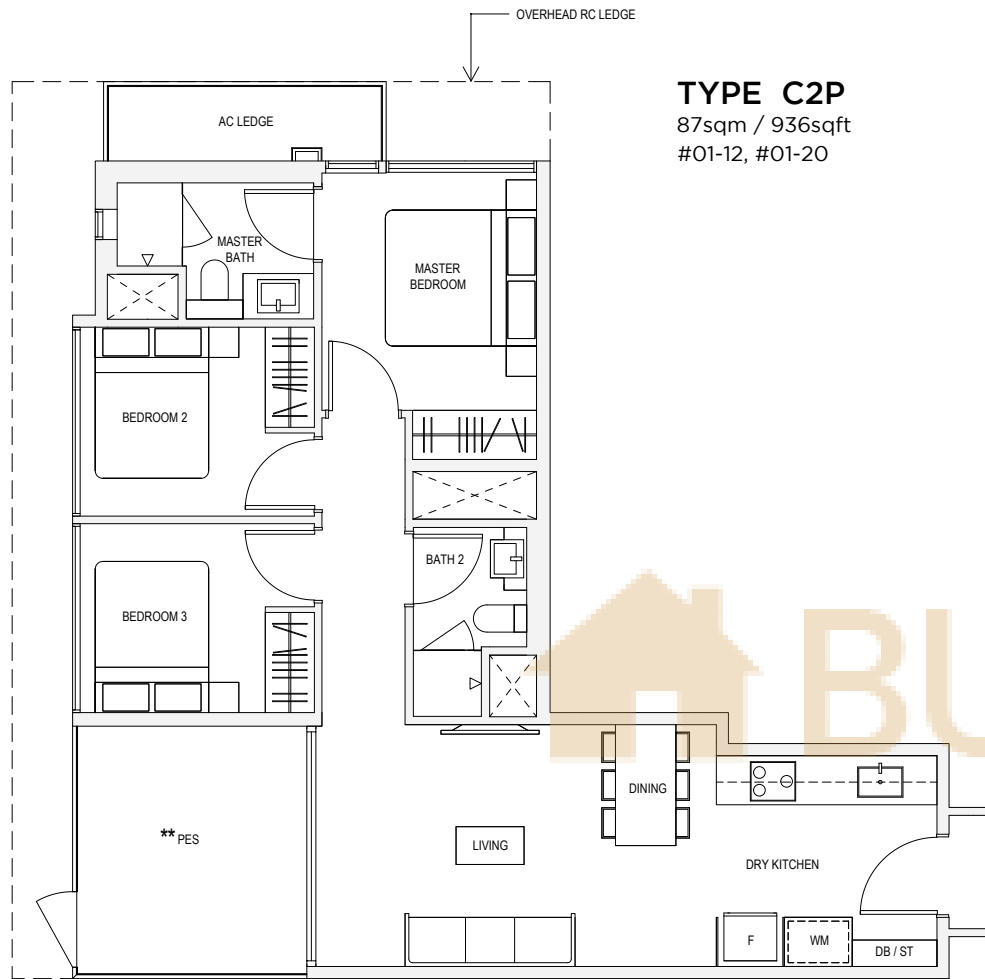
Note: Areas include A/C Ledge, balcony, PES, open to sky yard and strata void where applicable. Orientations and facings will differ depending on the unit you are purchasing, please refer to the key plan. Plans are not to scale and subject to change as may be required or approved by the relevant authorities. All areas are subject to final survey.



Key plan not to scale.

** The PES/ balcony shall not be enclosed. Only URA approved balcony screens are to be used. For an illustration of the approved balcony screen, please refer to page 82 of this brochure

Note: Areas include A/C Ledge, balcony, PES, open to sky yard and strata void where applicable. Orientations and facings will differ depending on the unit you are purchasing, please refer to the key plan. Plans are not to scale and subject to change as may be required or approved by the relevant authorities. All areas are subject to final survey.



** The PES/ balcony shall not be enclosed. Only URA approved balcony screens are to be used. For an illustration of the approved balcony screen, please refer to page 82 of this brochure

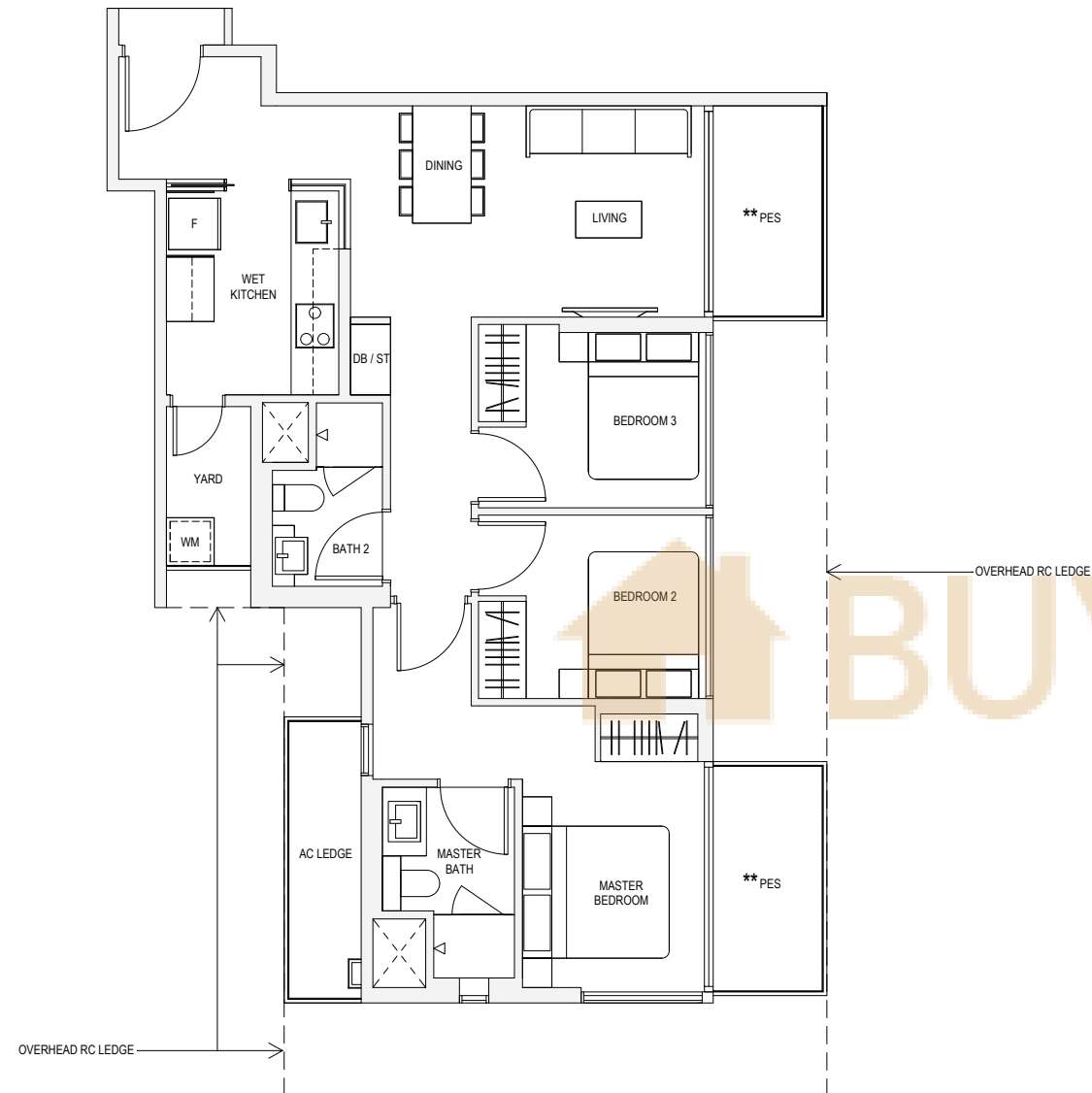
Note: Areas include A/C Ledge, balcony, PES, open to sky yard and strata void where applicable. Orientations and facings will differ depending on the unit you are purchasing, please refer to the key plan. Plans are not to scale and subject to change as may be required or approved by the relevant authorities. All areas are subject to final survey.



** The PES/ balcony shall not be enclosed. Only URA approved balcony screens are to be used. For an illustration of the approved balcony screen, please refer to page 82 of this brochure

Note: Areas include A/C Ledge, balcony, PES, open to sky yard and strata void where applicable. Orientations and facings will differ depending on the unit you are purchasing, please refer to the key plan. Plans are not to scale and subject to change as may be required or approved by the relevant authorities. All areas are subject to final survey.

TYPE C3P
93sqm / 1001sqft
#01-04

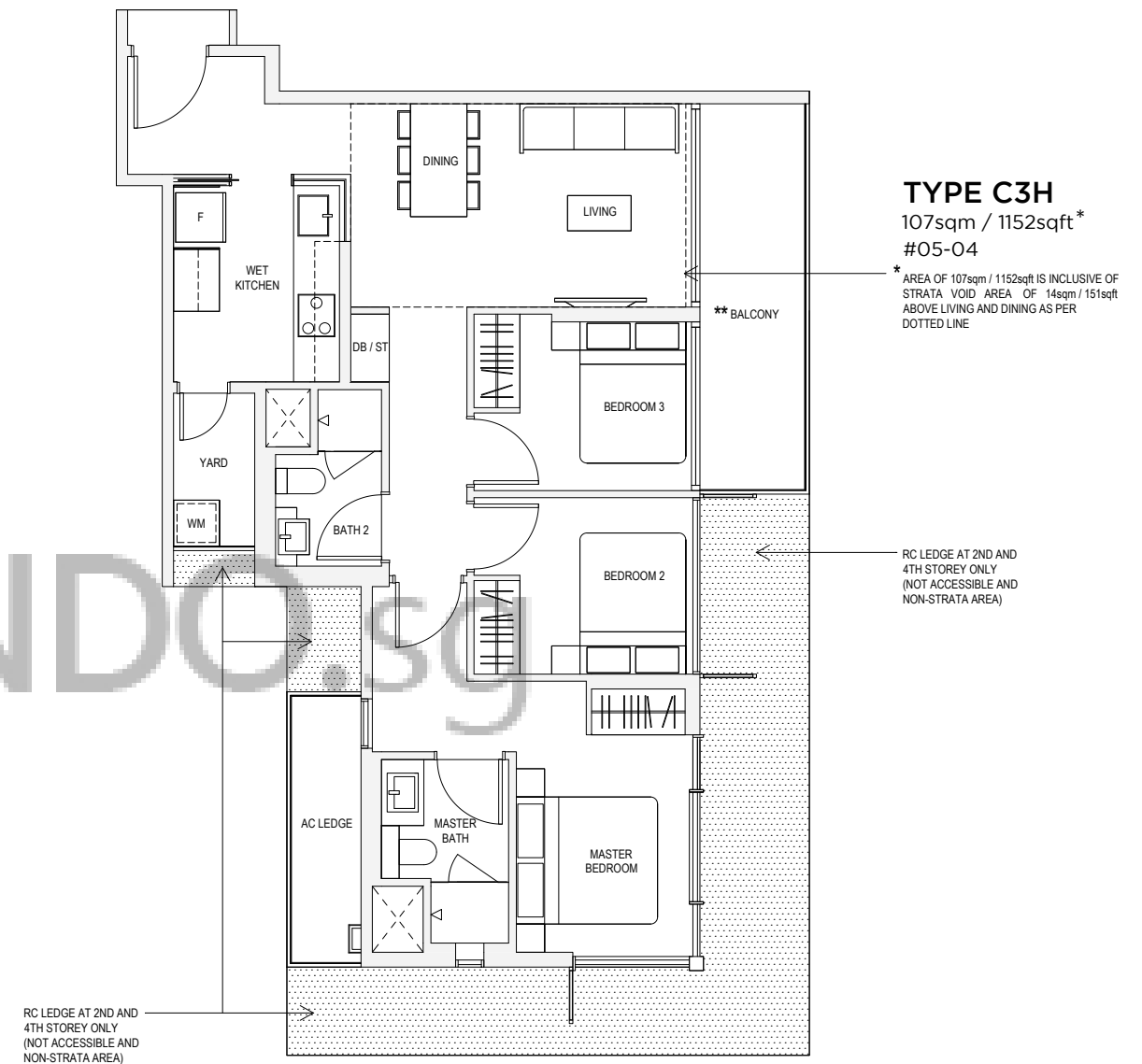


Key plan not to scale.

** The PES/ balcony shall not be enclosed. Only URA approved balcony screens are to be used. For an illustration of the approved balcony screen, please refer to page 82 of this brochure

Note: Areas include A/C Ledge, balcony, PES, open to sky yard and strata void where applicable. Orientations and facings will differ depending on the unit you are purchasing, please refer to the key plan. Plans are not to scale and subject to change as may be required or approved by the relevant authorities. All areas are subject to final survey.

TYPE C3
93sqm / 1001sqft
#02-04, #03-04, #04-04



Key plan not to scale.

** The PES/ balcony shall not be enclosed. Only URA approved balcony screens are to be used. For an illustration of the approved balcony screen, please refer to page 82 of this brochure

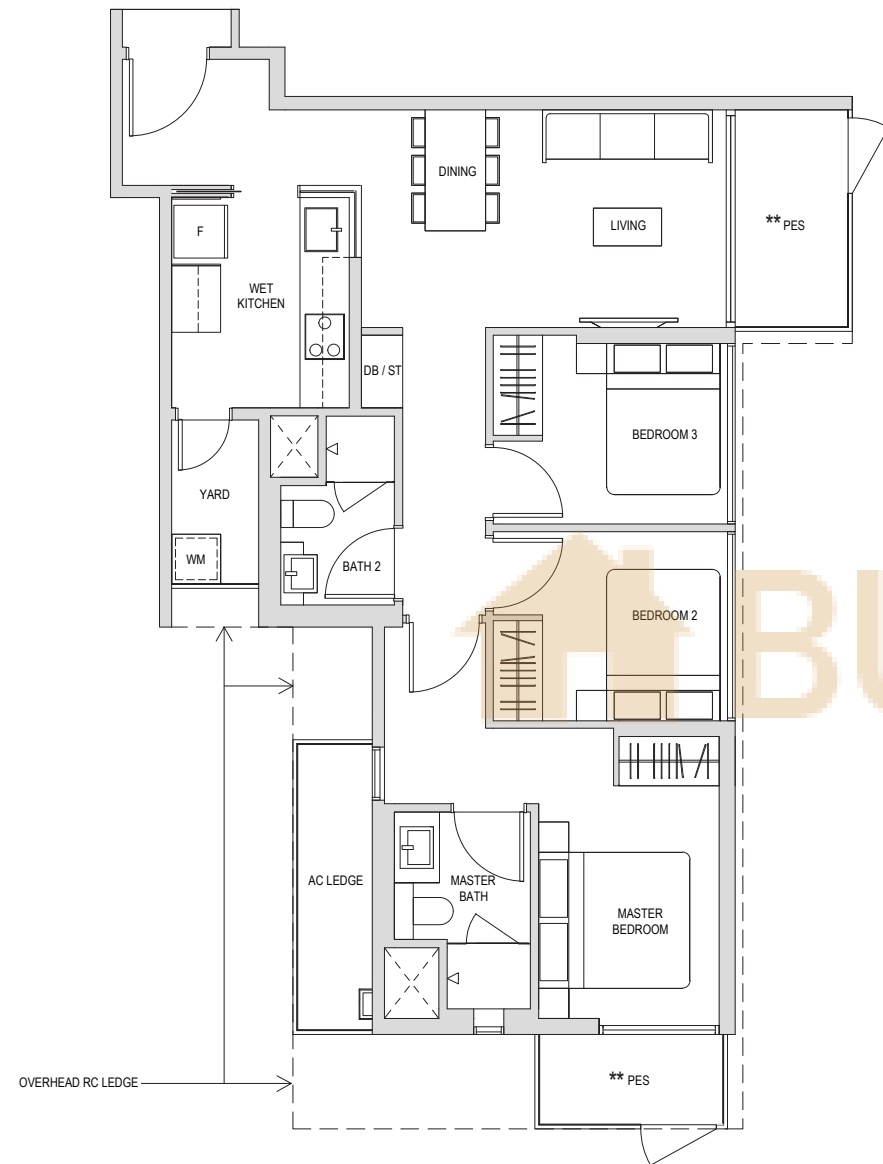
Note: Areas include A/C Ledge, balcony, PES, open to sky yard and strata void where applicable. Orientations and facings will differ depending on the unit you are purchasing, please refer to the key plan. Plans are not to scale and subject to change as may be required or approved by the relevant authorities. All areas are subject to final survey.

TYPE C3H
107sqm / 1152sqft*
#05-04

* AREA OF 107sqm / 1152sqft IS INCLUSIVE OF STRATA VOID AREA OF 14sqm / 151sqft ABOVE LIVING AND DINING AS PER DOTTED LINE

RC LEDGE AT 2ND AND 4TH STOREY ONLY (NOT ACCESSIBLE AND NON-STRATA AREA)

TYPE C3aP
92sqm / 990sqft
#01-29

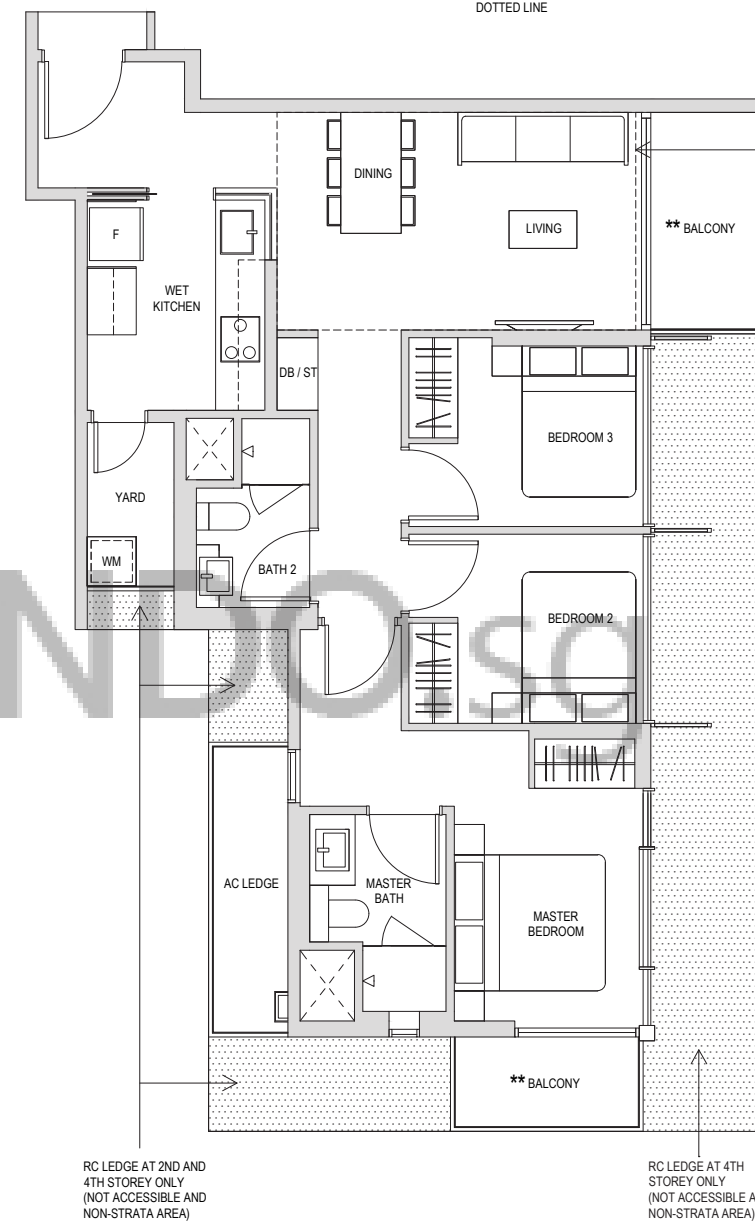


Key plan not to scale.

** The PES/ balcony shall not be enclosed. Only URA approved balcony screens are to be used. For an illustration of the approved balcony screen, please refer to page 82 of this brochure

Note: Areas include A/C Ledge, balcony, PES, open to sky yard and strata void where applicable. Orientations and facings will differ depending on the unit you are purchasing, please refer to the key plan. Plans are not to scale and subject to change as may be required or approved by the relevant authorities. All areas are subject to final survey.

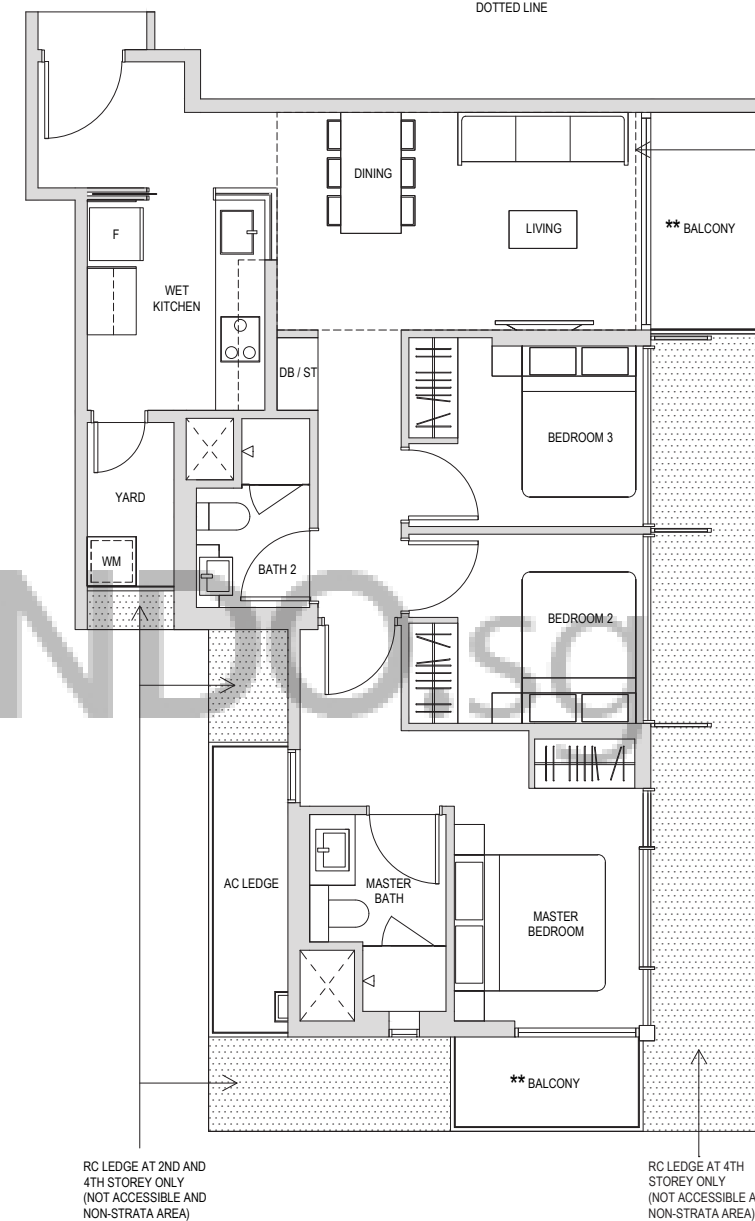
TYPE C3a
92sqm / 990sqft
#04-29



Key plan not to scale.

TYPE C3aH
107sqm / 1152sqft
#05-29

* AREA OF 107sqm / 1152sqft IS INCLUSIVE OF STRATA VOID AREA OF 14sqm / 151sqft ABOVE LIVING AND DINING AS PER DOTTED LINE

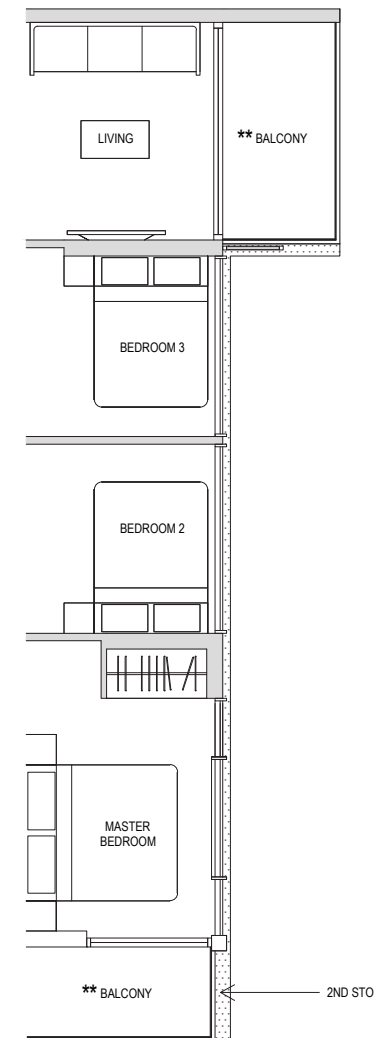


Key plan not to scale.

** The PES/ balcony shall not be enclosed. Only URA approved balcony screens are to be used. For an illustration of the approved balcony screen, please refer to page 82 of this brochure

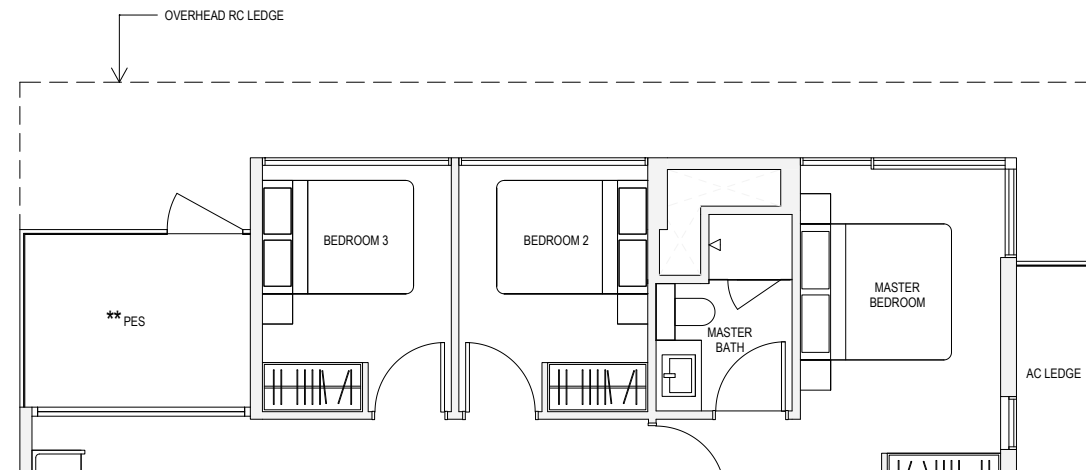
Note: Areas include A/C Ledge, balcony, PES, open to sky yard and strata void where applicable. Orientations and facings will differ depending on the unit you are purchasing, please refer to the key plan. Plans are not to scale and subject to change as may be required or approved by the relevant authorities. All areas are subject to final survey.

TYPE C3a
92sqm / 990sqft
#02-29, #03-29



2ND STOREY ONLY

TYPE C4P
96sqm / 1033sqft
#01-26



TYPE C4
96sqm / 1033sqft
#02-01, #03-01, #04-01,
#02-26, #03-26, #04-26

* AREA OF 111sqm / 1195sqft IS INCLUSIVE OF STRATA VOID AREA OF 15sqm / 161sqft ABOVE LIVING AND DINING AS PER DOTTED LINE

TYPE C4H
111sqm / 1195sqft*
#05-01, #05-26

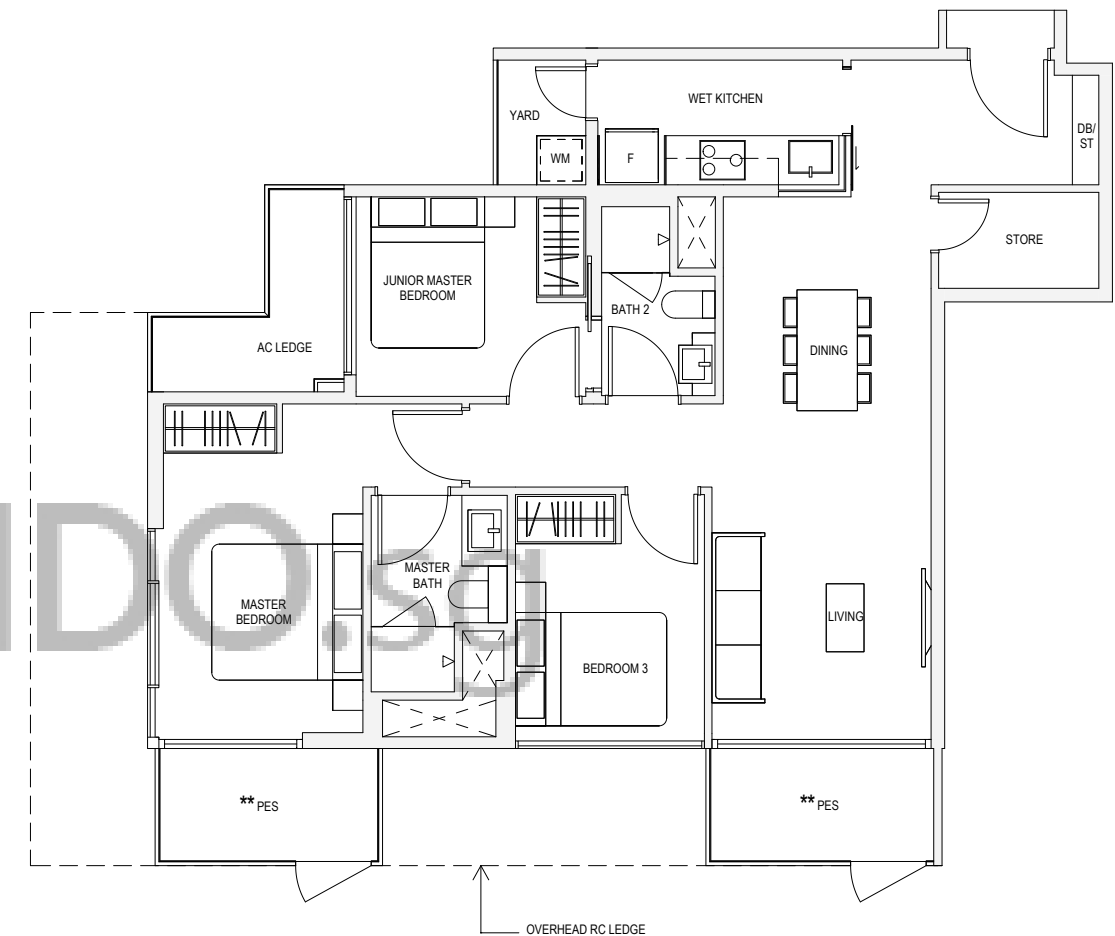


Key plan not to scale.

** The PES/ balcony shall not be enclosed. Only URA approved balcony screens are to be used. For an illustration of the approved balcony screen, please refer to page 82 of this brochure

Note: Areas include A/C Ledge, balcony, PES, open to sky yard and strata void where applicable. Orientations and facings will differ depending on the unit you are purchasing, please refer to the key plan. Plans are not to scale and subject to change as may be required or approved by the relevant authorities. All areas are subject to final survey.

TYPE C5P
101sqm / 1087sqft
#01-11

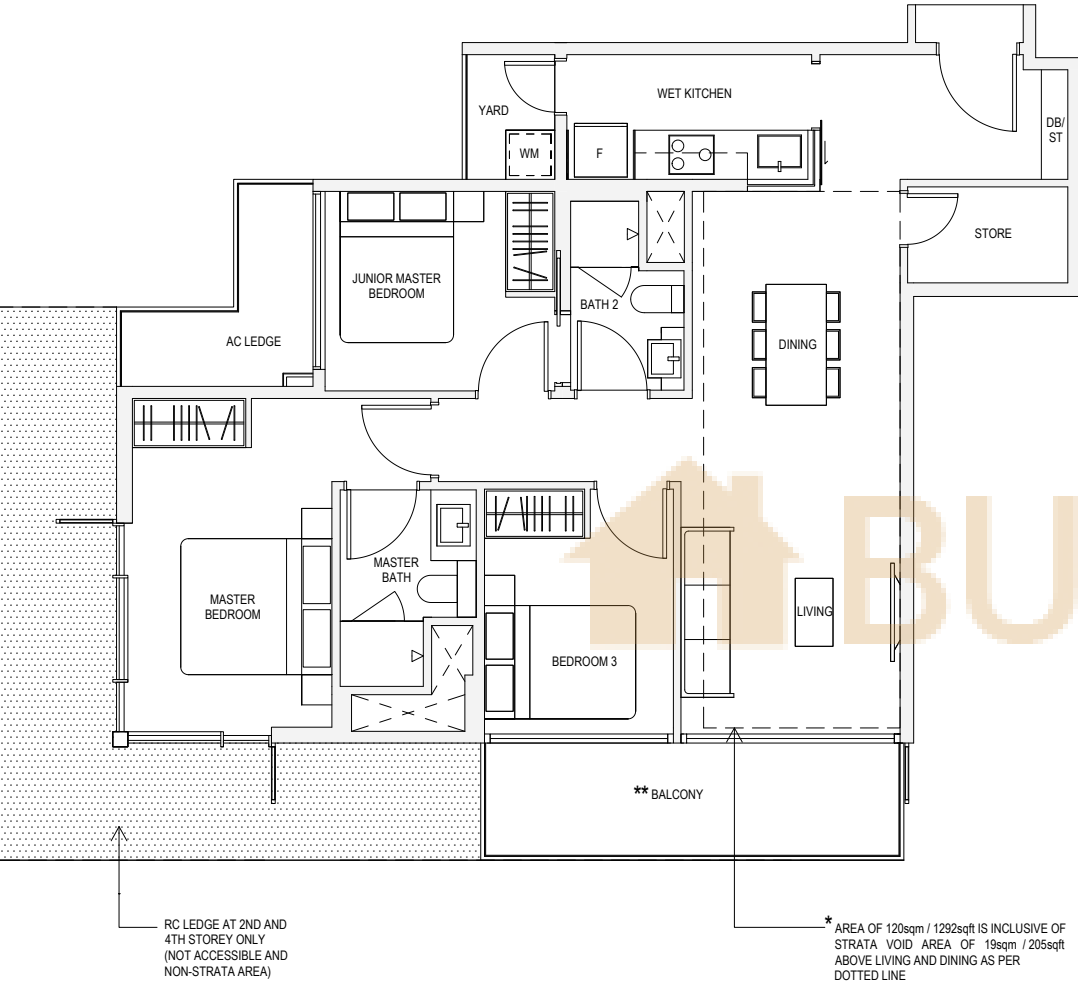


Key plan not to scale.

** The PES/ balcony shall not be enclosed. Only URA approved balcony screens are to be used. For an illustration of the approved balcony screen, please refer to page 82 of this brochure

Note: Areas include A/C Ledge, balcony, PES, open to sky yard and strata void where applicable. Orientations and facings will differ depending on the unit you are purchasing, please refer to the key plan. Plans are not to scale and subject to change as may be required or approved by the relevant authorities. All areas are subject to final survey.

TYPE C5
101sqm / 1087sqft
#02-11, #03-11, #04-11



TYPE C5H
120sqm / 1292sqft*
#05-11

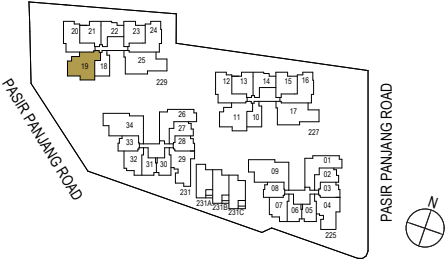
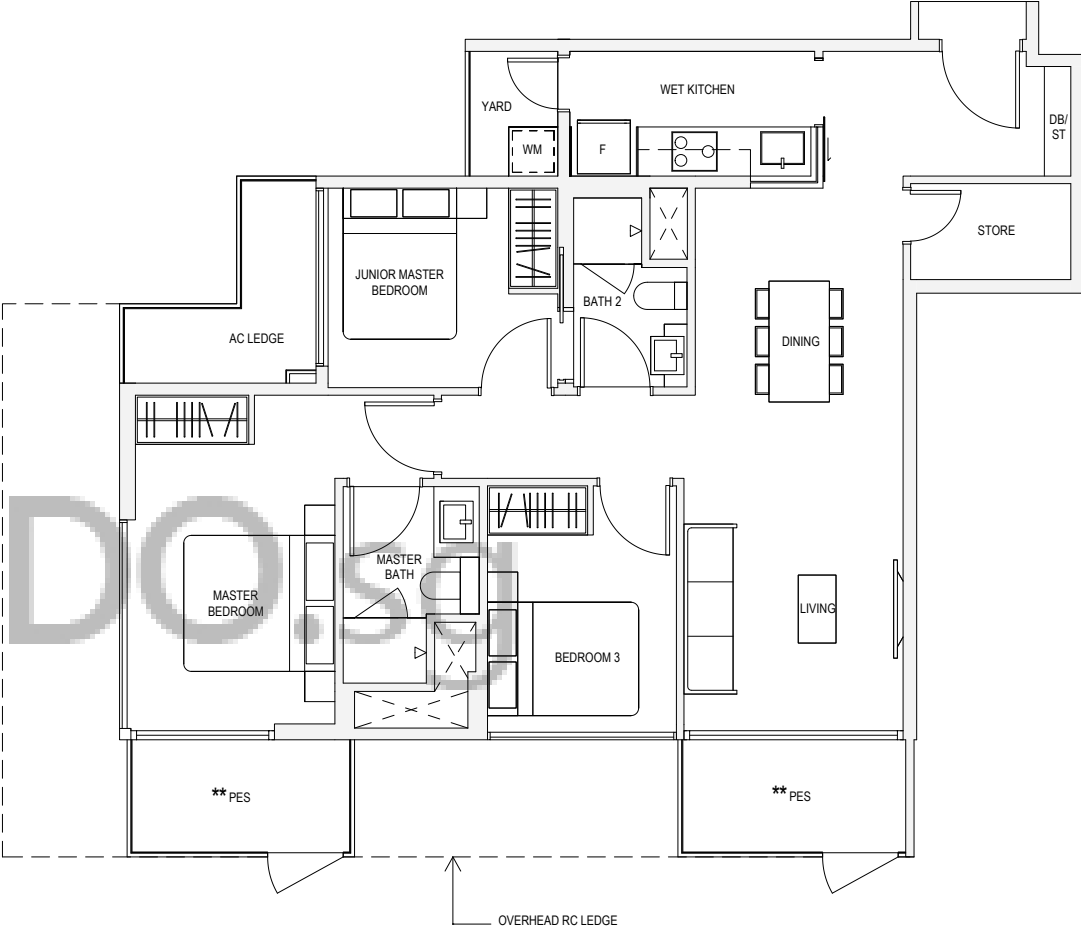


Key plan not to scale.

** The PES/ balcony shall not be enclosed. Only URA approved balcony screens are to be used. For an illustration of the approved balcony screen, please refer to page 82 of this brochure

Note: Areas include A/C Ledge, balcony, PES, open to sky yard and strata void where applicable. Orientations and facings will differ depending on the unit you are purchasing, please refer to the key plan. Plans are not to scale and subject to change as may be required or approved by the relevant authorities. All areas are subject to final survey.

TYPE C5aP
101sqm / 1087sqft
#01-19



Key plan not to scale.

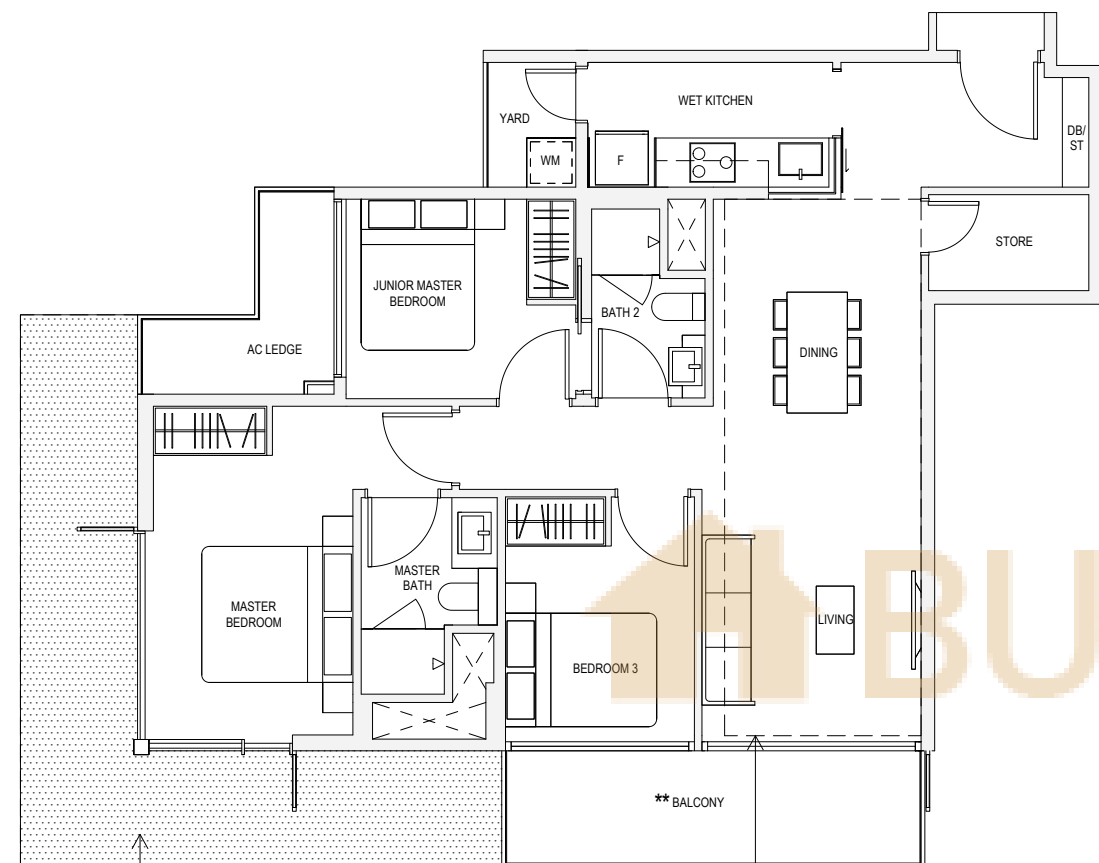
** The PES/ balcony shall not be enclosed. Only URA approved balcony screens are to be used. For an illustration of the approved balcony screen, please refer to page 82 of this brochure

Note: Areas include A/C Ledge, balcony, PES, open to sky yard and strata void where applicable. Orientations and facings will differ depending on the unit you are purchasing, please refer to the key plan. Plans are not to scale and subject to change as may be required or approved by the relevant authorities. All areas are subject to final survey.

TYPE C5a

101sqm / 1087sqft

#02-19, #03-19, #04-19



RC LEDGE AT 2ND AND 4TH STOREY ONLY (NOT ACCESSIBLE AND NON-STRATA AREA)

* AREA OF 120sqm / 1292sqft IS INCLUSIVE OF STRATA VOID AREA OF 19sqm / 205sqft ABOVE LIVING AND DINING AS PER DOTTED LINE

TYPE C5aH

120sqm / 1292sqft*

#05-19



Key plan not to scale.

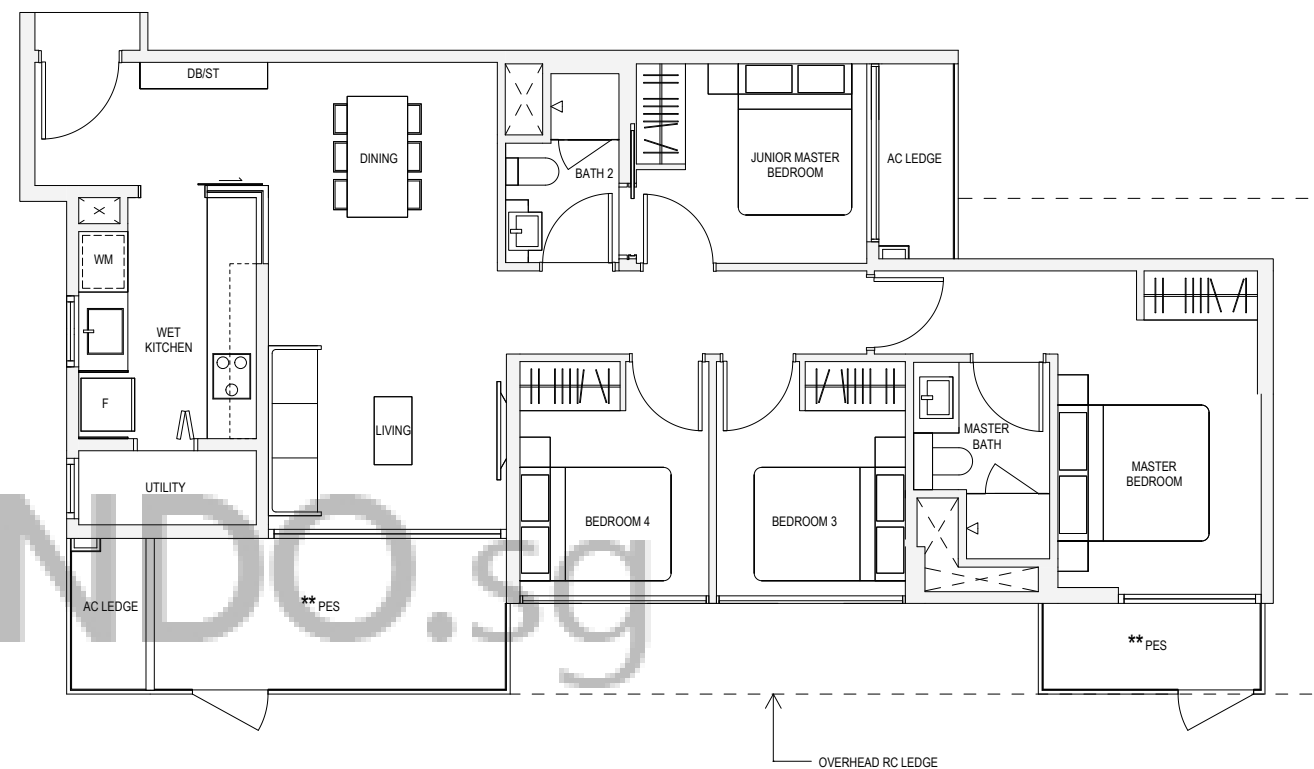
** The PES/ balcony shall not be enclosed. Only URA approved balcony screens are to be used. For an illustration of the approved balcony screen, please refer to page 82 of this brochure

Note: Areas include A/C Ledge, balcony, PES, open to sky yard and strata void where applicable. Orientations and facings will differ depending on the unit you are purchasing, please refer to the key plan. Plans are not to scale and subject to change as may be required or approved by the relevant authorities. All areas are subject to final survey.

TYPE D1P

116sqm / 1249sqft

#01-17, #01-25



OVERHEAD RC LEDGE



Key plan not to scale.

** The PES/ balcony shall not be enclosed. Only URA approved balcony screens are to be used. For an illustration of the approved balcony screen, please refer to page 82 of this brochure

Note: Areas include A/C Ledge, balcony, PES, open to sky yard and strata void where applicable. Orientations and facings will differ depending on the unit you are purchasing, please refer to the key plan. Plans are not to scale and subject to change as may be required or approved by the relevant authorities. All areas are subject to final survey.

TYPE D1

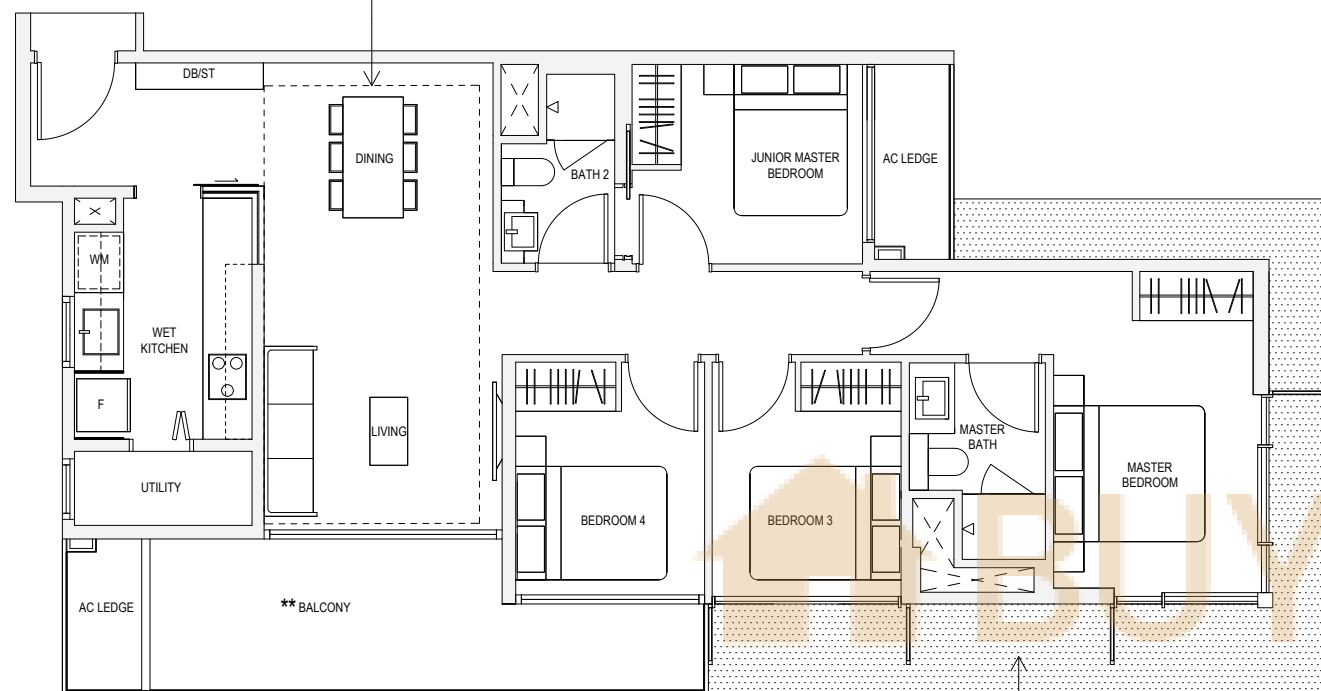
116sqm / 1249sqft

#02-17, #03-17, #04-17,
#02-25, #03-25, #04-25**TYPE D1H**

134sqm / 1442sqft*

#05-17, #05-25

* AREA OF 134sqm / 1442sqft IS INCLUSIVE OF STRATA VOID AREA OF 18sqm / 194sqft ABOVE LIVING AND DINING AS PER DOTTED LINE

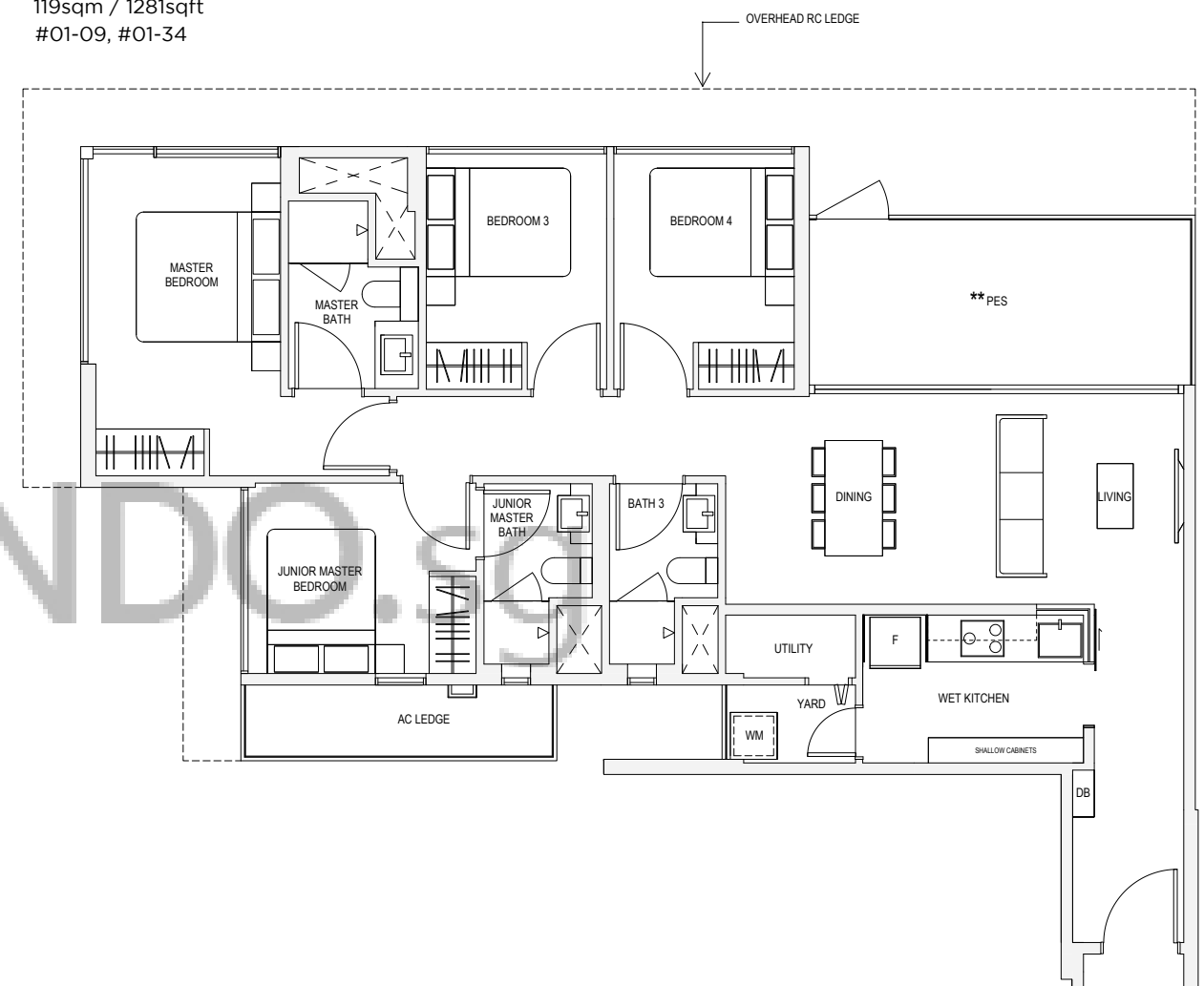


RC LEDGE AT 2ND AND 4TH STOREY ONLY (NOT ACCESSIBLE AND NON-STRATA AREA)

TYPE D2P

119sqm / 1281sqft

#01-09, #01-34



Key plan not to scale.

** The PES/ balcony shall not be enclosed. Only URA approved balcony screens are to be used. For an illustration of the approved balcony screen, please refer to page 82 of this brochure

Note: Areas include A/C Ledge, balcony, PES, open to sky yard and strata void where applicable. Orientations and facings will differ depending on the unit you are purchasing, please refer to the key plan. Plans are not to scale and subject to change as may be required or approved by the relevant authorities. All areas are subject to final survey.



Key plan not to scale.

** The PES/ balcony shall not be enclosed. Only URA approved balcony screens are to be used. For an illustration of the approved balcony screen, please refer to page 82 of this brochure

Note: Areas include A/C Ledge, balcony, PES, open to sky yard and strata void where applicable. Orientations and facings will differ depending on the unit you are purchasing, please refer to the key plan. Plans are not to scale and subject to change as may be required or approved by the relevant authorities. All areas are subject to final survey.

TYPE D2

120sqm / 1292sqft

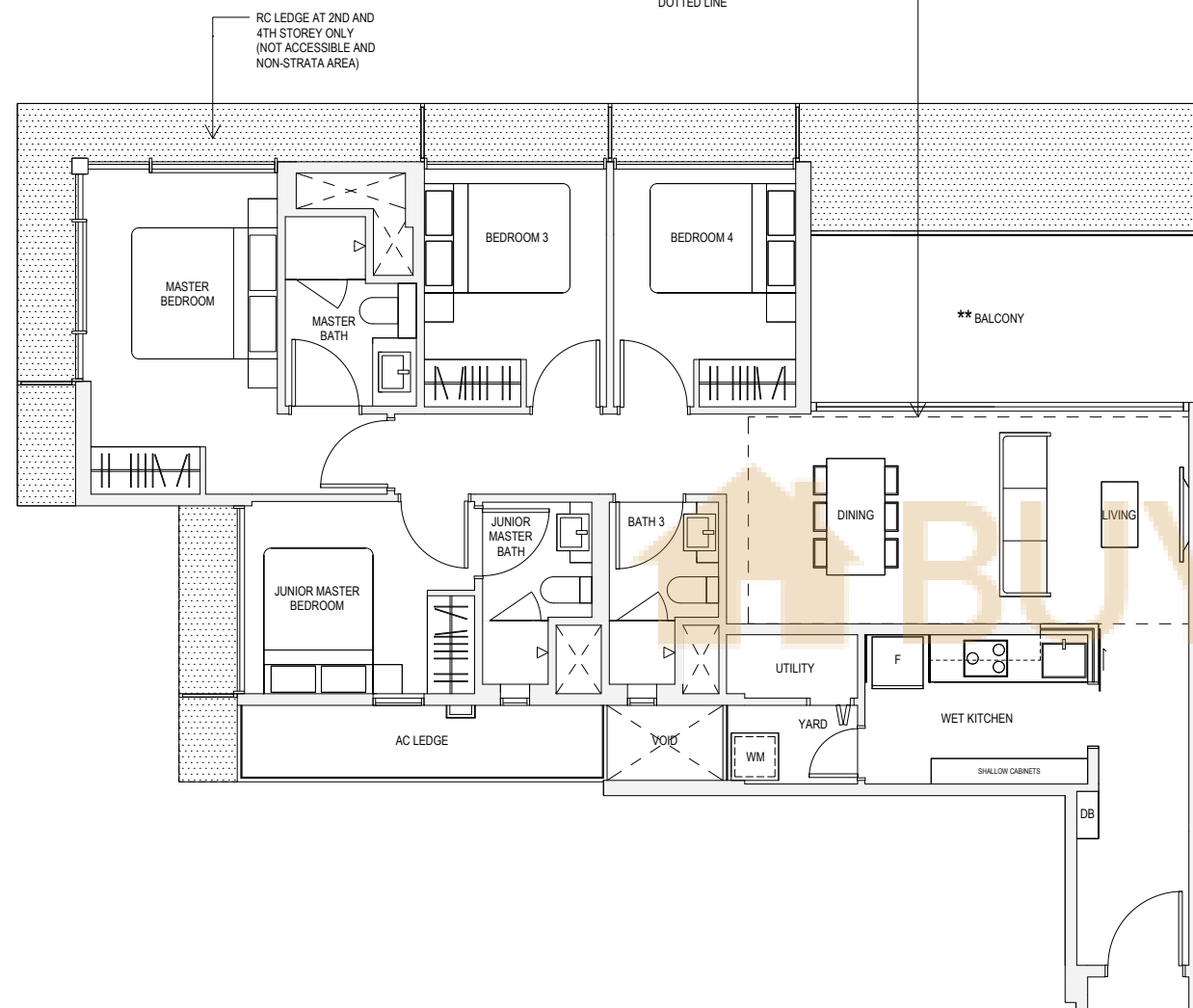
#02-09, #03-09, #04-09,

TYPE D2H

138sqm / 1485sqft*

#05-09

* AREA OF 138sqm / 1485sqft IS INCLUSIVE OF STRATA VOID AREA OF 18sqm / 194sqft ABOVE LIVING AND DINING AS PER DOTTED LINE



Key plan not to scale.

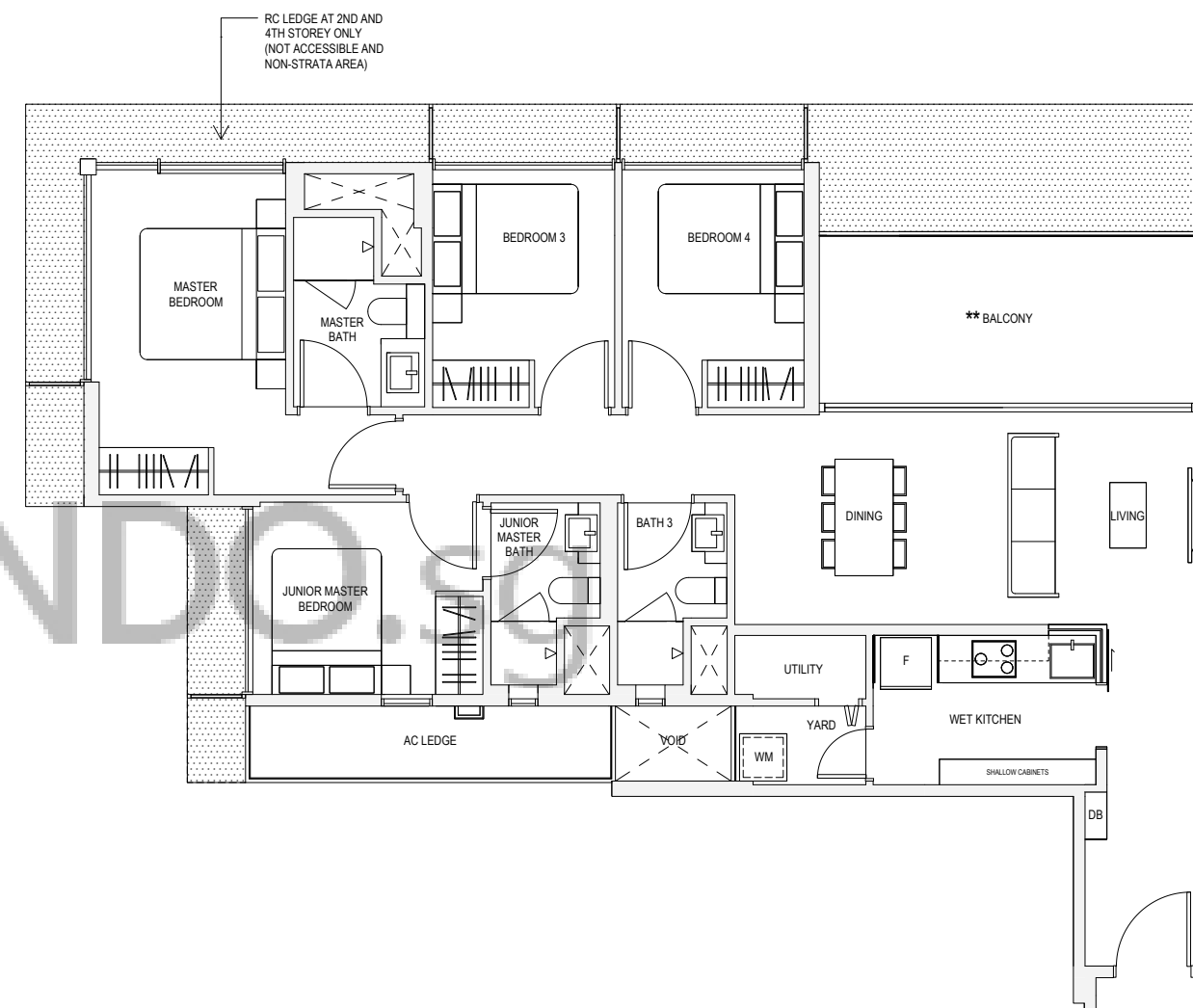
** The PES/ balcony shall not be enclosed. Only URA approved balcony screens are to be used. For an illustration of the approved balcony screen, please refer to page 82 of this brochure

Note: Areas include A/C Ledge, balcony, PES, open to sky yard and strata void where applicable. Orientations and facings will differ depending on the unit you are purchasing, please refer to the key plan. Plans are not to scale and subject to change as may be required or approved by the relevant authorities. All areas are subject to final survey.

TYPE D2a

120sqm / 1292sqft

#02-34, #03-34, #04-34, #05-34



Key plan not to scale.

** The PES/ balcony shall not be enclosed. Only URA approved balcony screens are to be used. For an illustration of the approved balcony screen, please refer to page 82 of this brochure

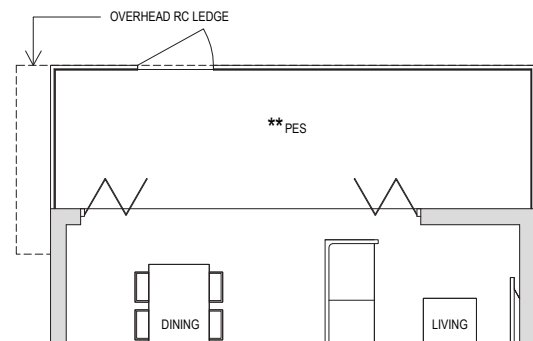
Note: Areas include A/C Ledge, balcony, PES, open to sky yard and strata void where applicable. Orientations and facings will differ depending on the unit you are purchasing, please refer to the key plan. Plans are not to scale and subject to change as may be required or approved by the relevant authorities. All areas are subject to final survey.

As exceptional as it is unique, this is living like never before. The tradition of black and white bungalows is now elevated to luxurious levels. The basement, which accesses your car park, represents the pillars and arches that support the living quarters above. An extravagant patio brings to mind the verandah where loved ones gather to enjoy the beauty of nature from the comfort of home.

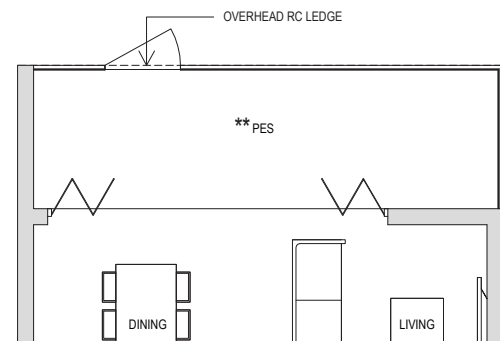
STRATA TERRACE HOUSE



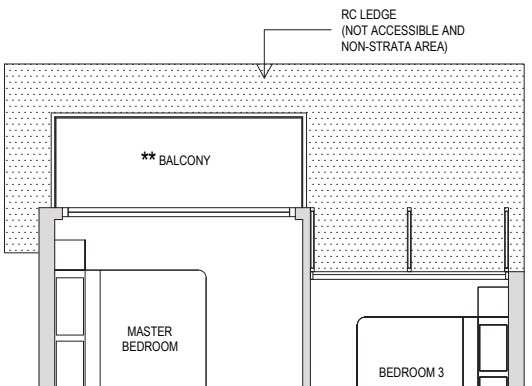
STRATA TERRACE HOUSE
202sqm / 2174sqft
231A



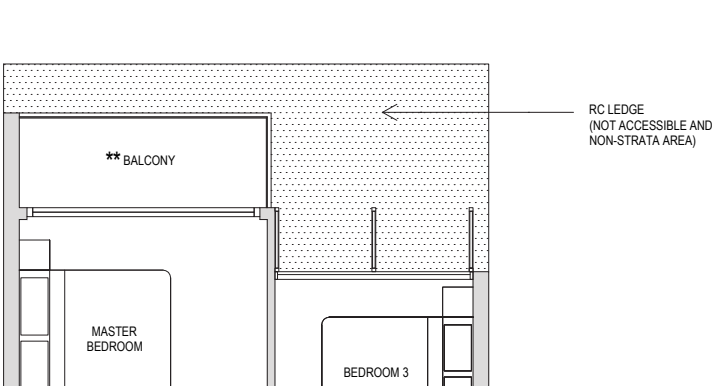
STRATA TERRACE HOUSE
202sqm / 2174sqft
231B



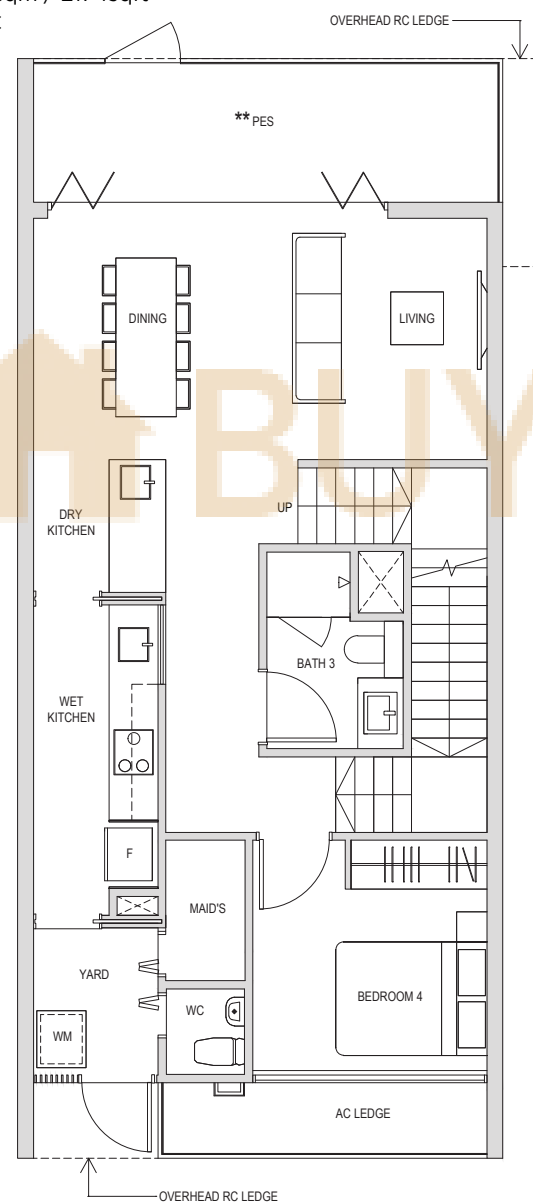
STRATA TERRACE HOUSE
202sqm / 2174sqft
231A



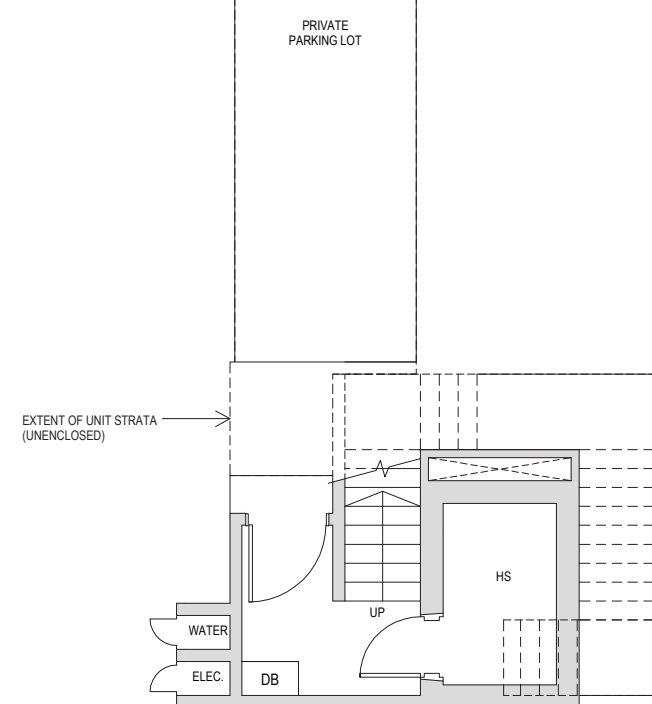
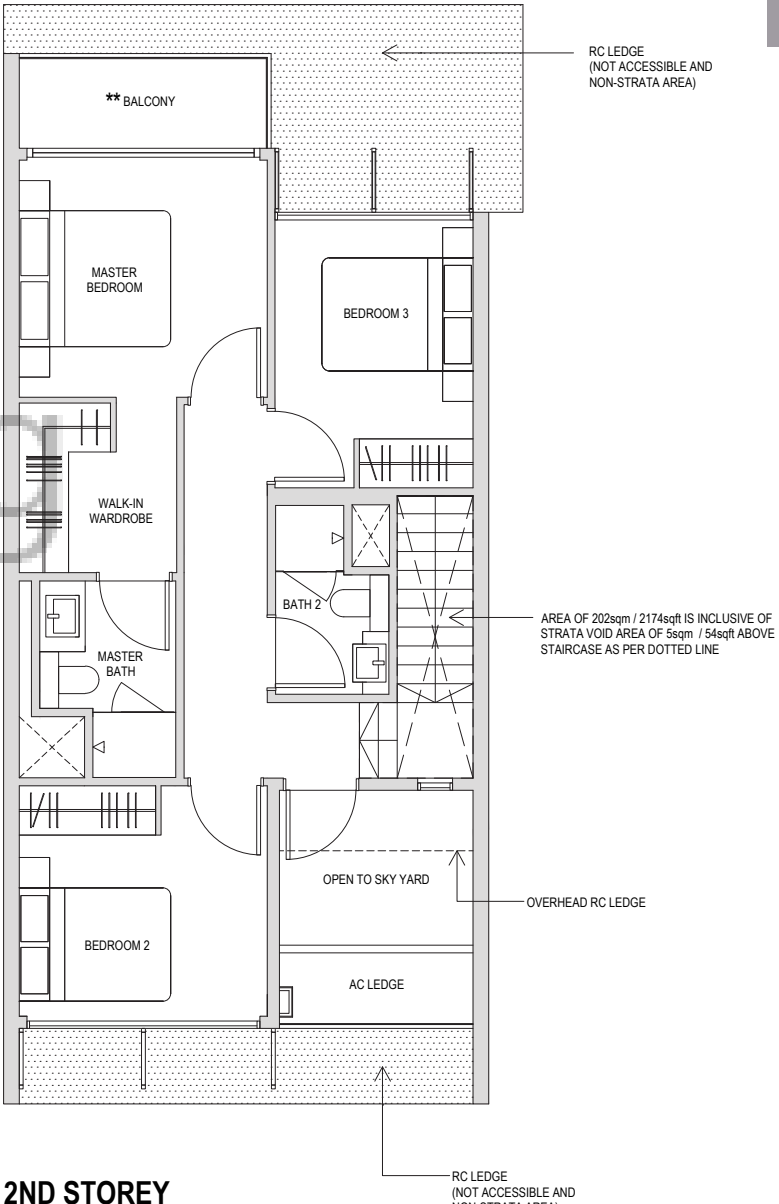
STRATA TERRACE HOUSE
202sqm / 2174sqft
231B



STRATA TERRACE HOUSE
202sqm / 2174sqft
231C



STRATA TERRACE HOUSE
202sqm / 2174sqft
231C



BASEMENT FLOOR

1ST STOREY

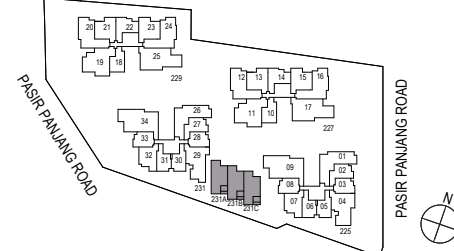
2ND STOREY



Key plan not to scale.

** The PES/ balcony shall not be enclosed. Only URA approved balcony screens are to be used. For an illustration of the approved balcony screen, please refer to page 82 of this brochure

Note: Areas include A/C Ledge, balcony, PES, open to sky yard and strata void where applicable. Orientations and facings will differ depending on the unit you are purchasing, please refer to the key plan. Plans are not to scale and subject to change as may be required or approved by the relevant authorities. All areas are subject to final survey.



Key plan not to scale.

** The PES/ balcony shall not be enclosed. Only URA approved balcony screens are to be used. For an illustration of the approved balcony screen, please refer to page 82 of this brochure

Note: Areas include A/C Ledge, balcony, PES, open to sky yard and strata void where applicable. Orientations and facings will differ depending on the unit you are purchasing, please refer to the key plan. Plans are not to scale and subject to change as may be required or approved by the relevant authorities. All areas are subject to final survey.