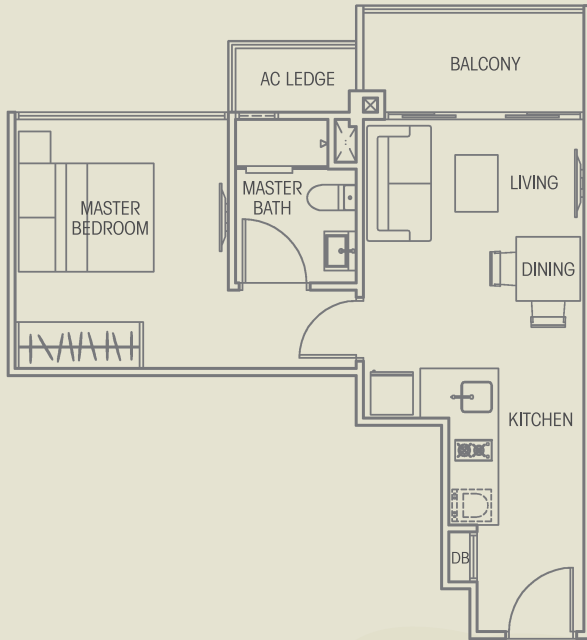


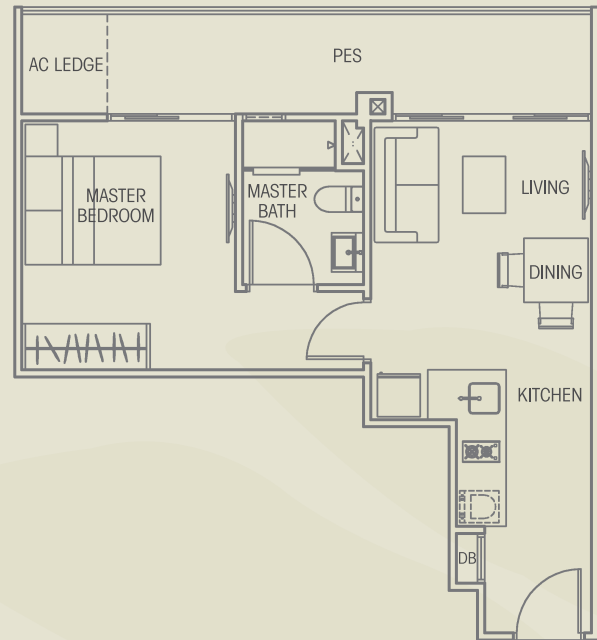
TYPE A1 (1 Bedroom)

Block 40 #02-15 to #12-15
 Block 46 #02-26 to #12-26
 Block 48 #03-32 to #12-32
 Block 50 #03-37 to #12-37
 Area 484 sqft

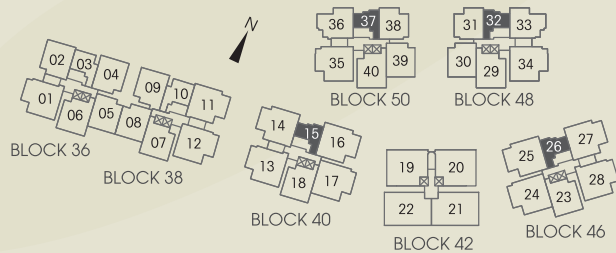
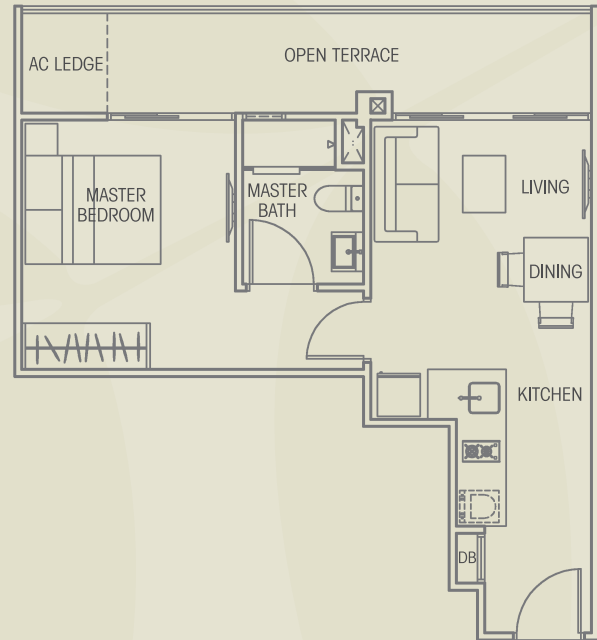


TYPE A1-G (1 Bedroom)

Block 40 #01-15
 Block 46 #01-26
 Area 538 sqft



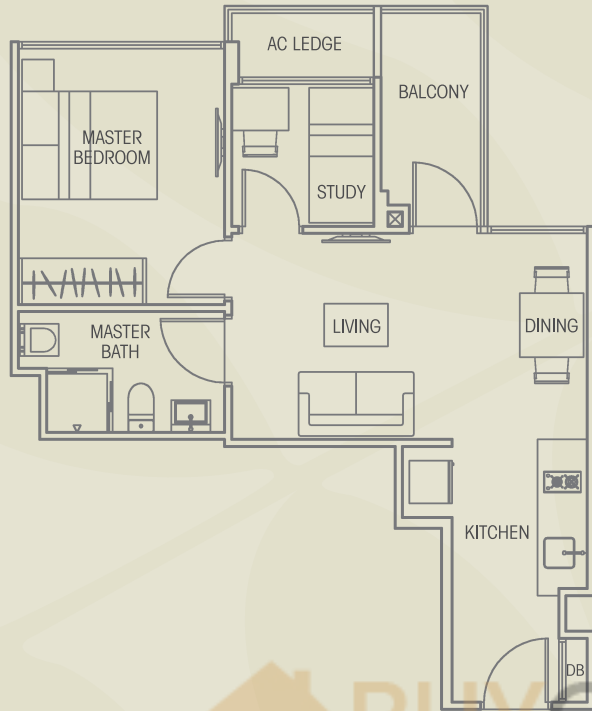
Block 48 #02-32
 Block 50 #02-37
 Area 538 sqft



All plans are not to scale and subject to amendments as approved by the relevant authorities. Floor areas are approximate measurements and subject to final survey.

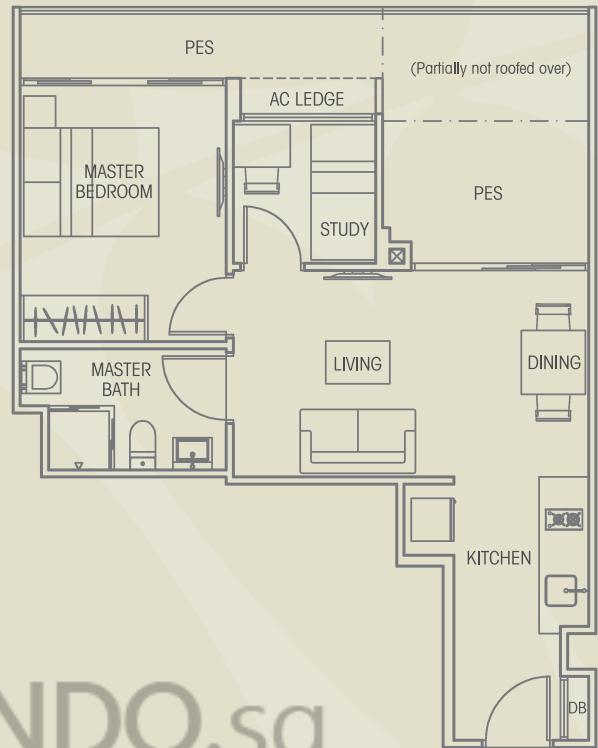
TYPE A2 (1 Bedroom + Study)

Block 36 #02-03 to #12-03
 Block 38 #02-10 to #12-10
 Area 560 sqft

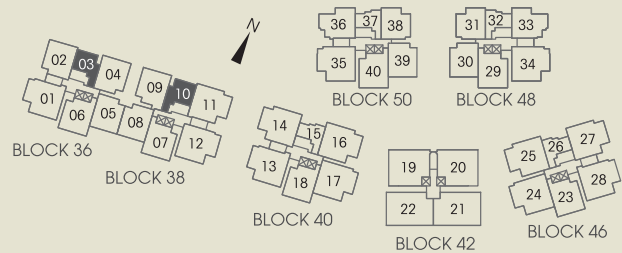


TYPE A2-G (1 Bedroom + Study)

Block 36 #01-03
 Block 38 #01-10
 Area 667 sqft

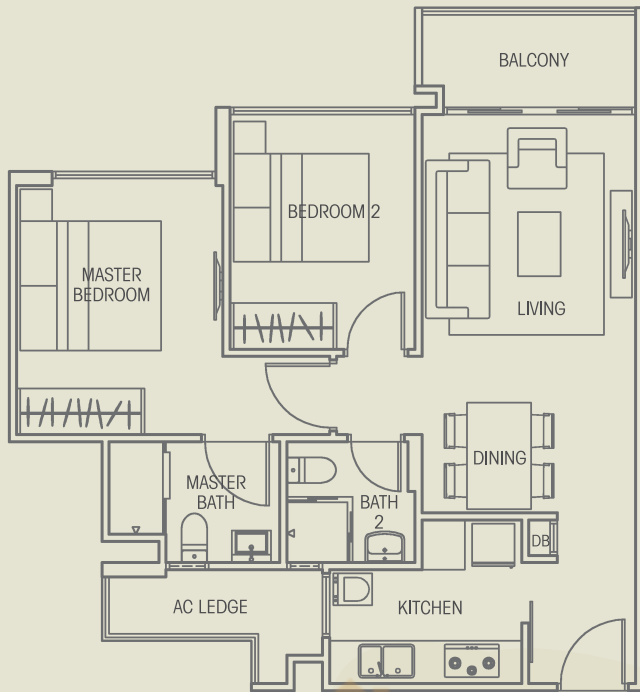


 BUY CONDO.sg



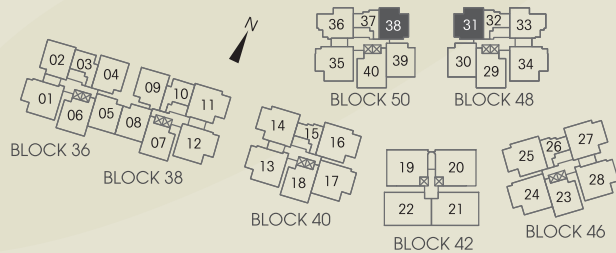
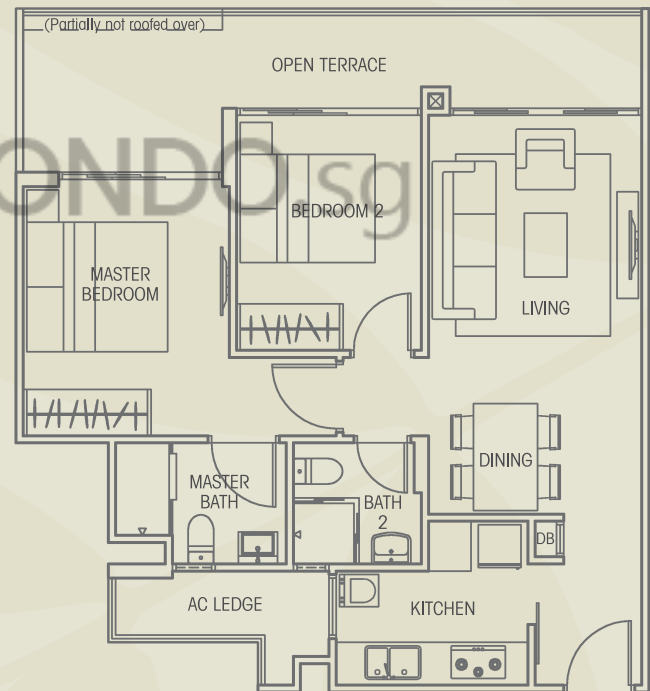
TYPE B1 (2-Bedroom)

Block 48 #03-31 to #11-31
 Block 50 #03-38 to #11-38
 Area 732 sqft



TYPE B1-G (2-Bedroom)

Block 48 #02-31
 Block 50 #02-38
 Area 850 sqft



All plans are not to scale and subject to amendments as approved by the relevant authorities. Floor areas are approximate measurements and subject to final survey.

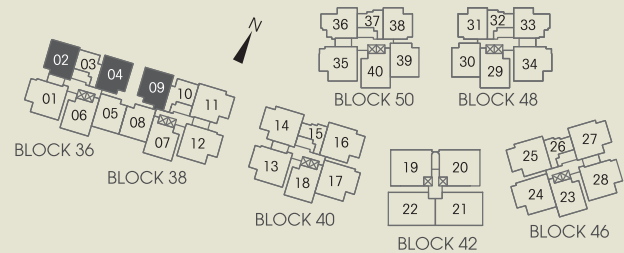
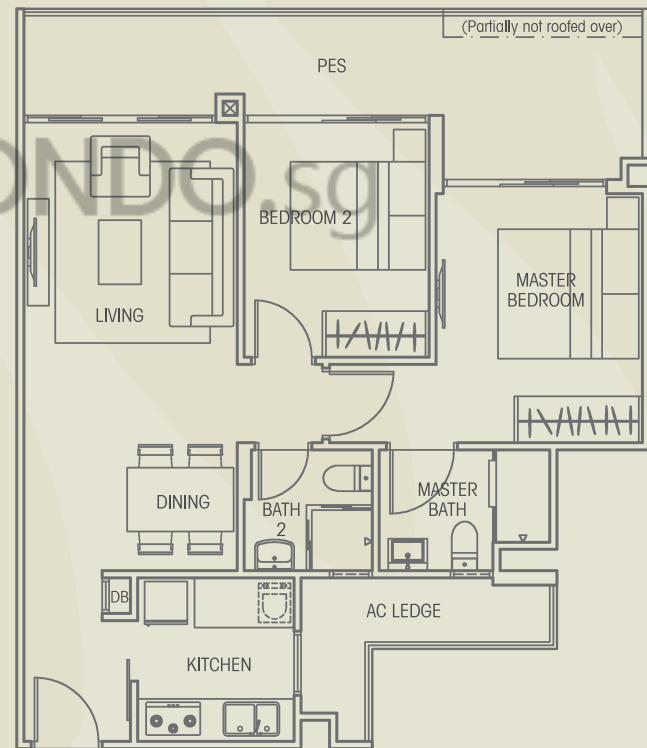
TYPE B2 (2-Bedroom)

Block 36 #02-02 to #11-02 & #02-04 to #11-04
 Block 38 #02-09 to #11-09
 Area 807 sqft



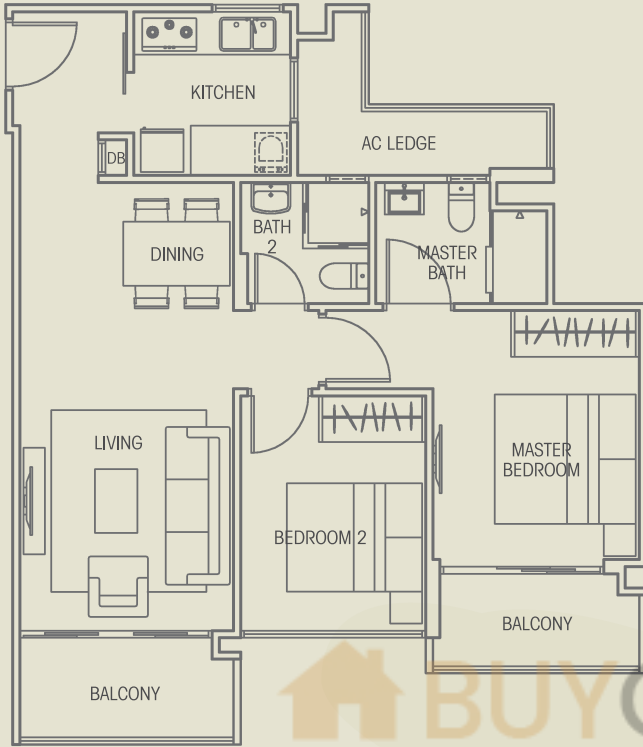
TYPE B2-G (2-Bedroom)

Block 36 #01-02 & #01-04
 Block 38 #01-09
 Area 883 sqft



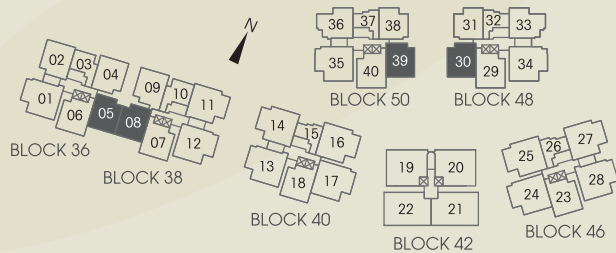
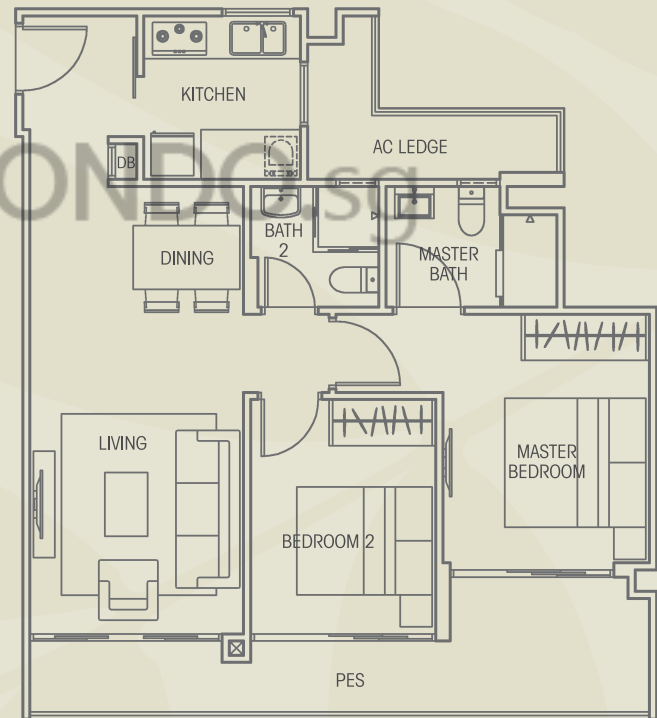
TYPE B3 (2-Bedroom)

Block 36 #02-05 to #11-05
 Block 38 #02-08 to #11-08
 Block 48 #01-30 to #10-30
 Block 50 #01-39 to #10-39
 Area 807 sqft



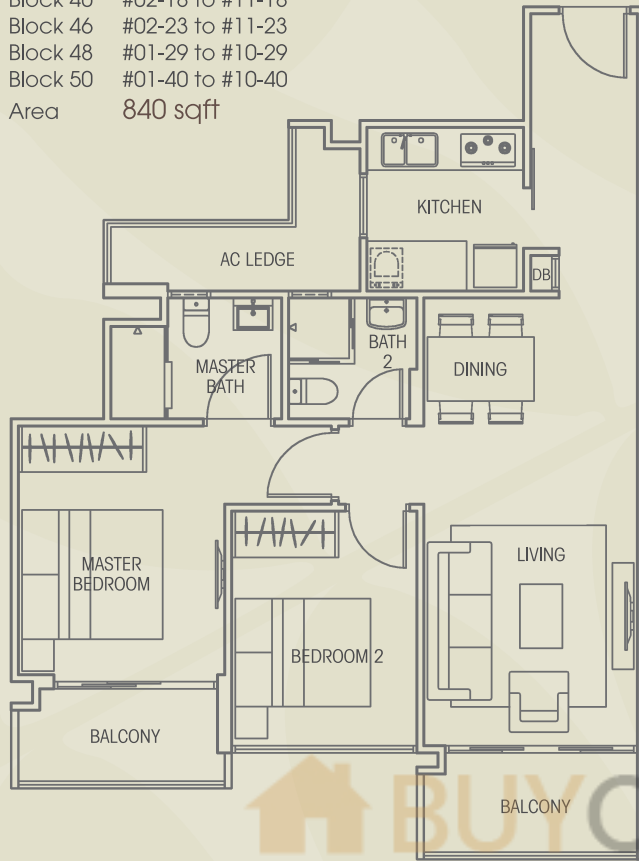
TYPE B3-G (2-Bedroom)

Block 36 #01-05
 Block 38 #01-08
 Block 48 #B1-30
 Block 50 #B1-39
 Area 840 sqft



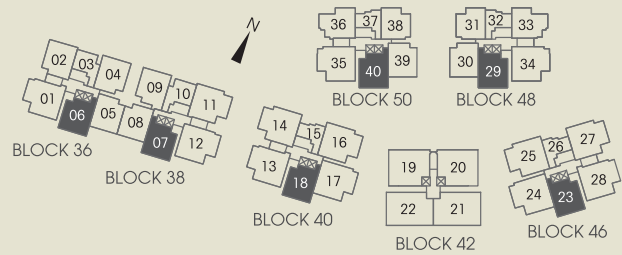
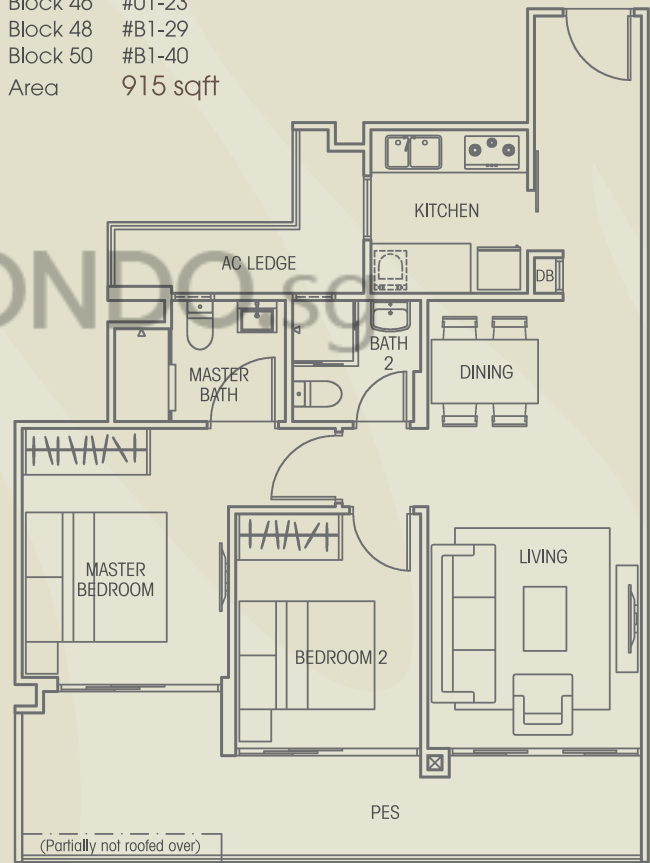
TYPE B4 (2-Bedroom)

- Block 36 #02-06 to #11-06
- Block 38 #02-07 to #11-07
- Block 40 #02-18 to #11-18
- Block 46 #02-23 to #11-23
- Block 48 #01-29 to #10-29
- Block 50 #01-40 to #10-40
- Area 840 sqft



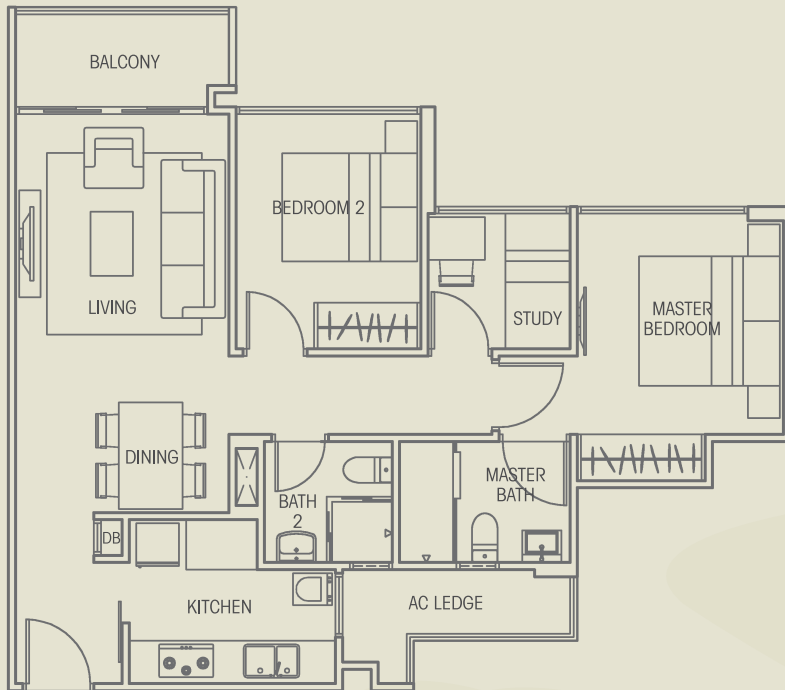
TYPE B4-G (2-Bedroom)

- Block 36 #01-06
- Block 38 #01-07
- Block 40 #01-18
- Block 46 #01-23
- Block 48 #B1-29
- Block 50 #B1-40
- Area 915 sqft



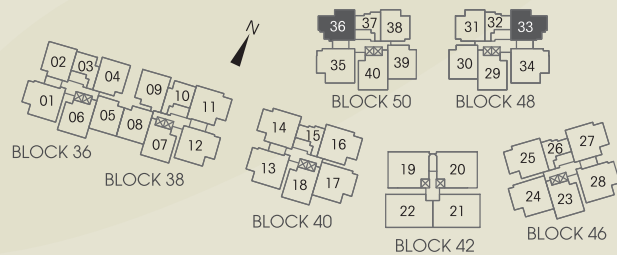
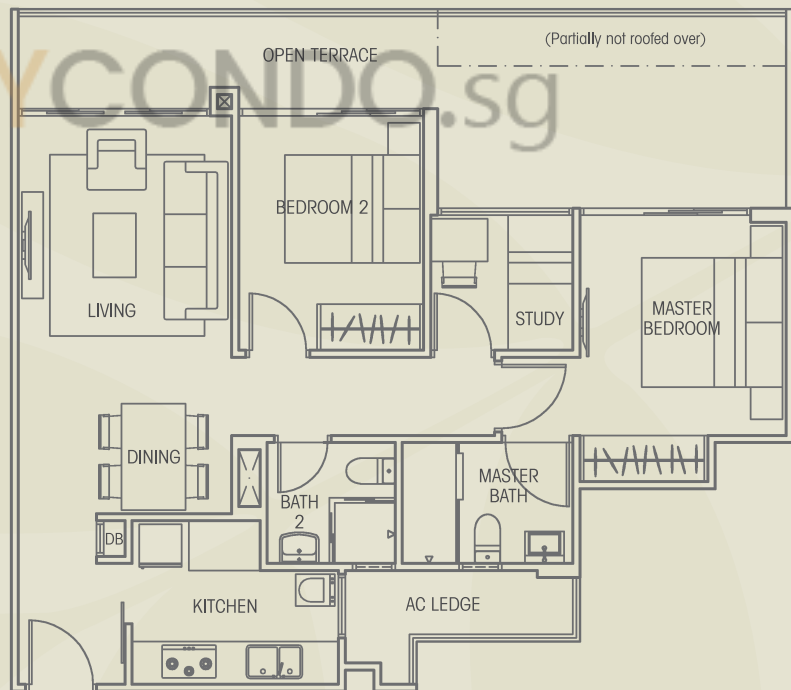
TYPE B5 (2-Bedroom + Study)

Block 48 #03-33 to #11-33
 Block 50 #03-36 to #11-36
 Area 807 sqft



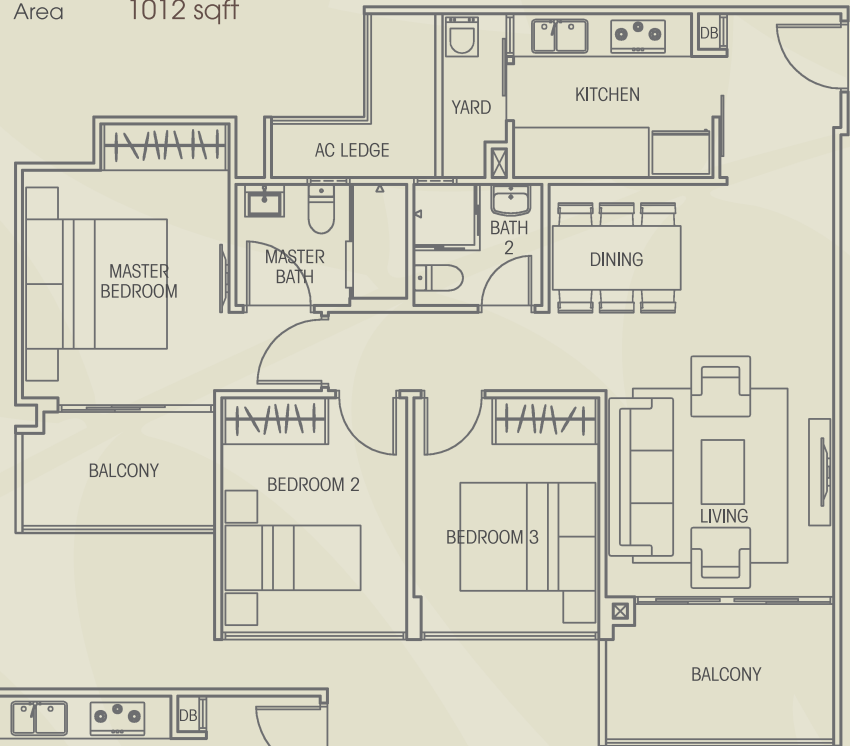
TYPE B5-G (2-Bedroom + Study)

Block 48 #02-33
 Block 50 #02-36
 Area 1001 sqft



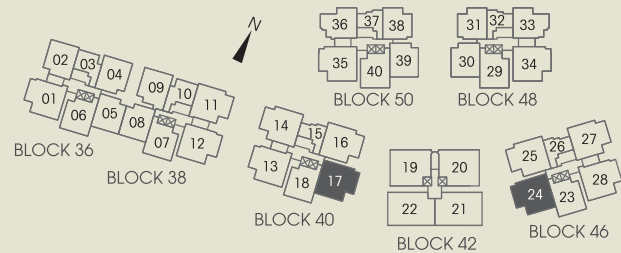
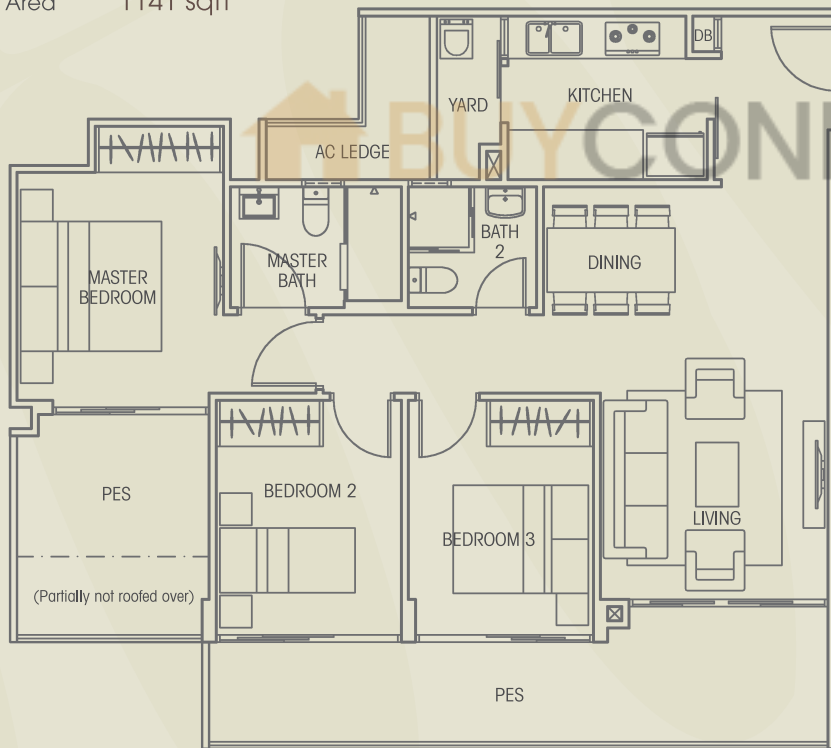
TYPE C1 (3-Bedroom)

Block 40 #02-17 to #11-17
 Block 46 #02-24 to #11-24
 Area 1012 sqft



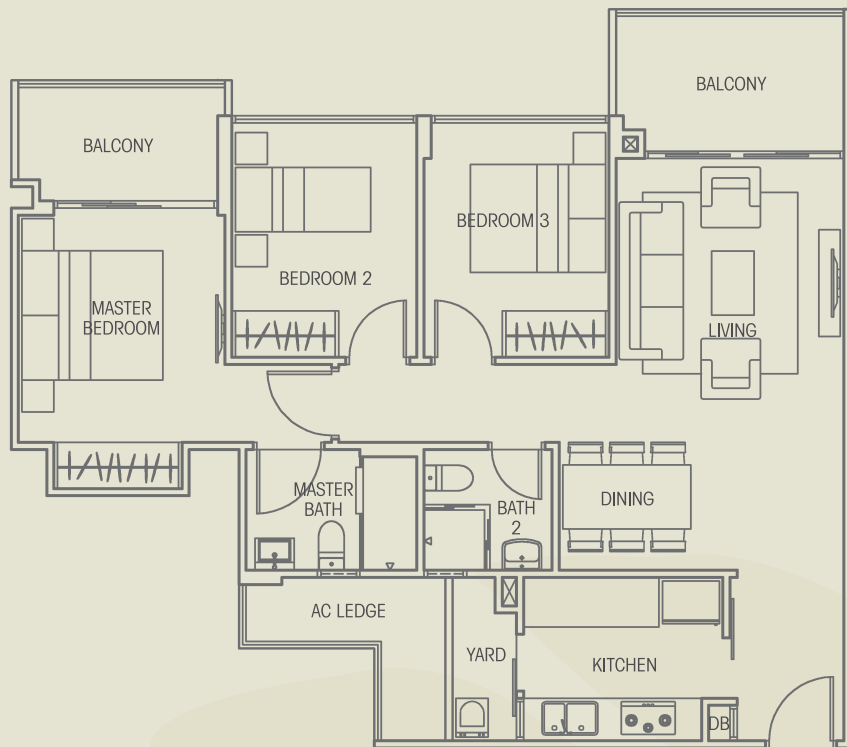
TYPE C1-G (3-Bedroom)

Block 40 #01-17
 Block 46 #01-24
 Area 1141 sqft



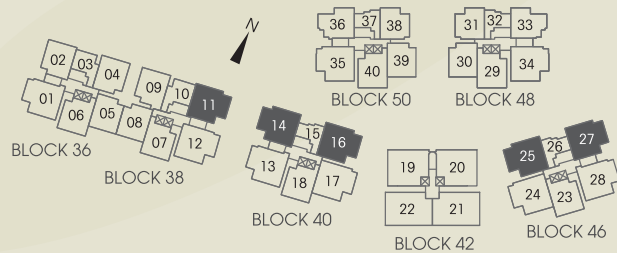
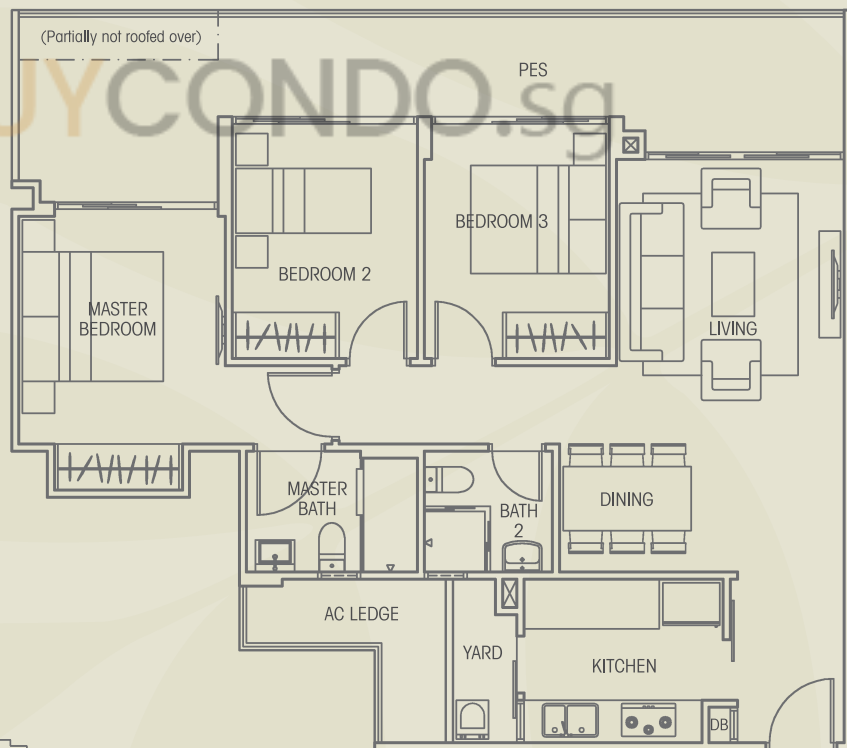
TYPE C2 (3-Bedroom)

Block 38 #02-11 to #11-11
 Block 40 #02-14 to #11-14 & #02-16 to #11-16
 Block 46 #02-25 to #11-25 & #02-27 to #11-27
 Area 1033 sqft



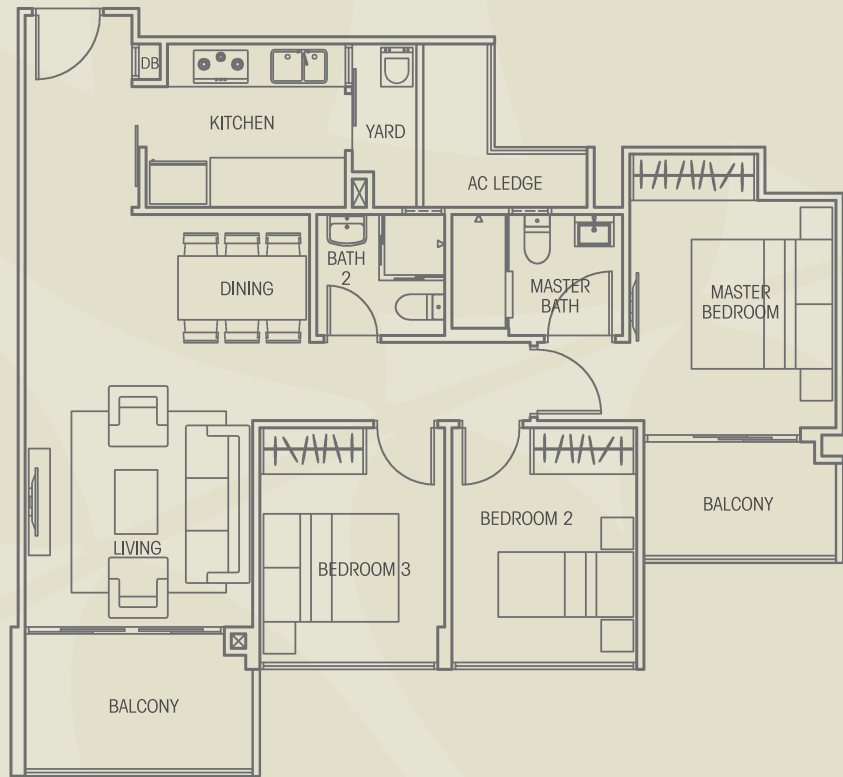
TYPE C2-G (3-Bedroom)

Block 38 #01-11
 Block 40 #01-14 & #01-16
 Block 46 #01-25 & #01-27
 Area 1152 sqft



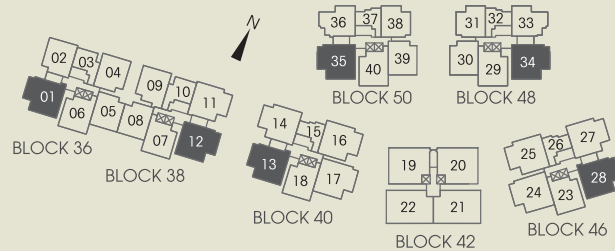
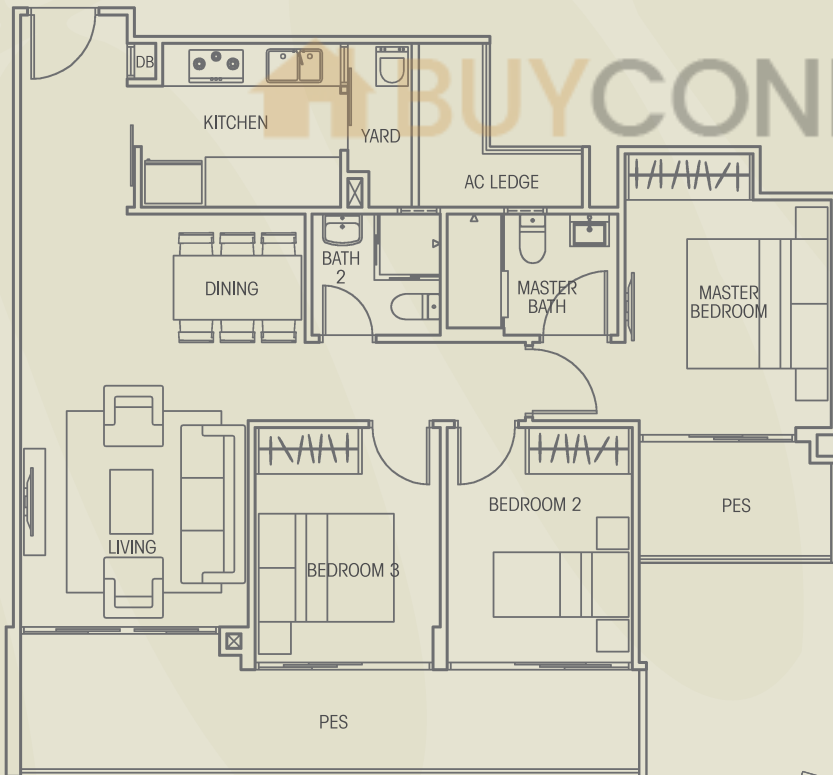
TYPE C3 (3-Bedroom)

Block 36 #02-01 to #11-01
 Block 38 #02-12 to #11-12
 Block 40 #02-13 to #11-13
 Block 46 #02-28 to #11-28
 Block 48 #01-34 to #10-34
 Block 50 #01-35 to #10-35
 Area 1023 sqft



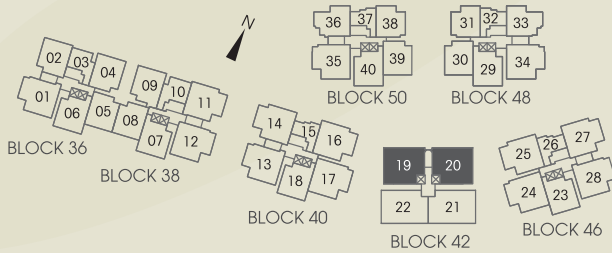
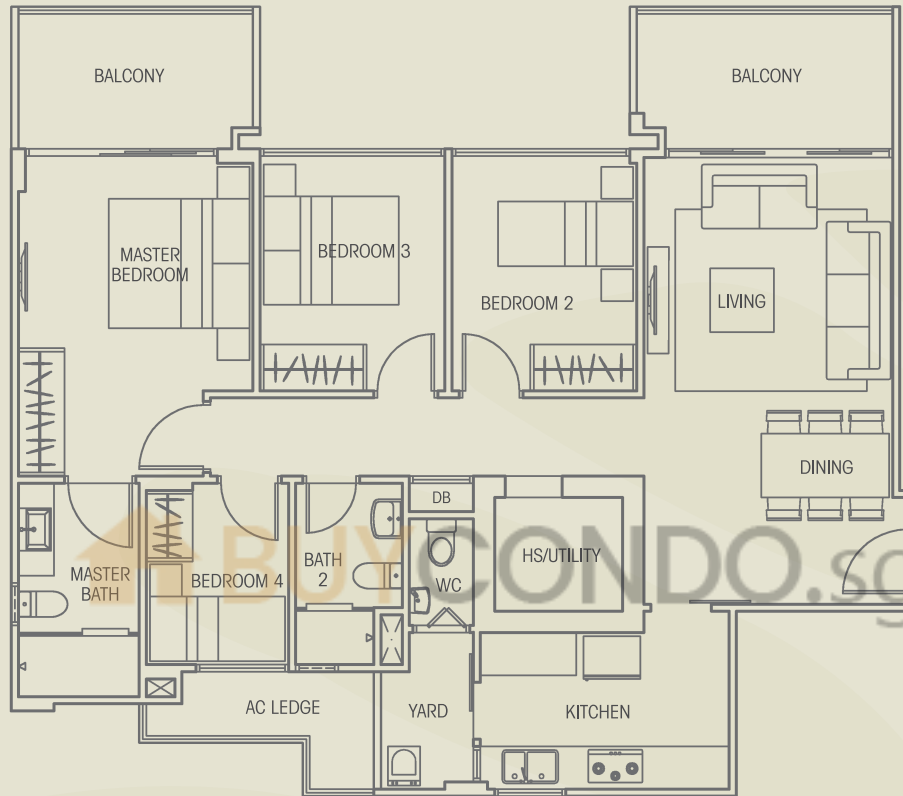
TYPE C3-G (3-Bedroom)

Block 36 #01-01
 Block 38 #01-12
 Block 40 #01-13
 Block 46 #01-28
 Block 48 #B1-34
 Area 1119 sqft



TYPE D1 (4-Bedroom)

Block 42 #02-19 to #11-19
#02-20 to #11-20
Area 1259 sqft

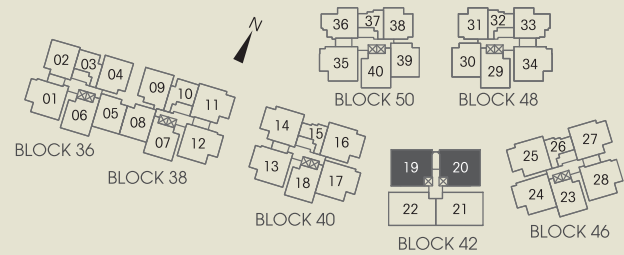
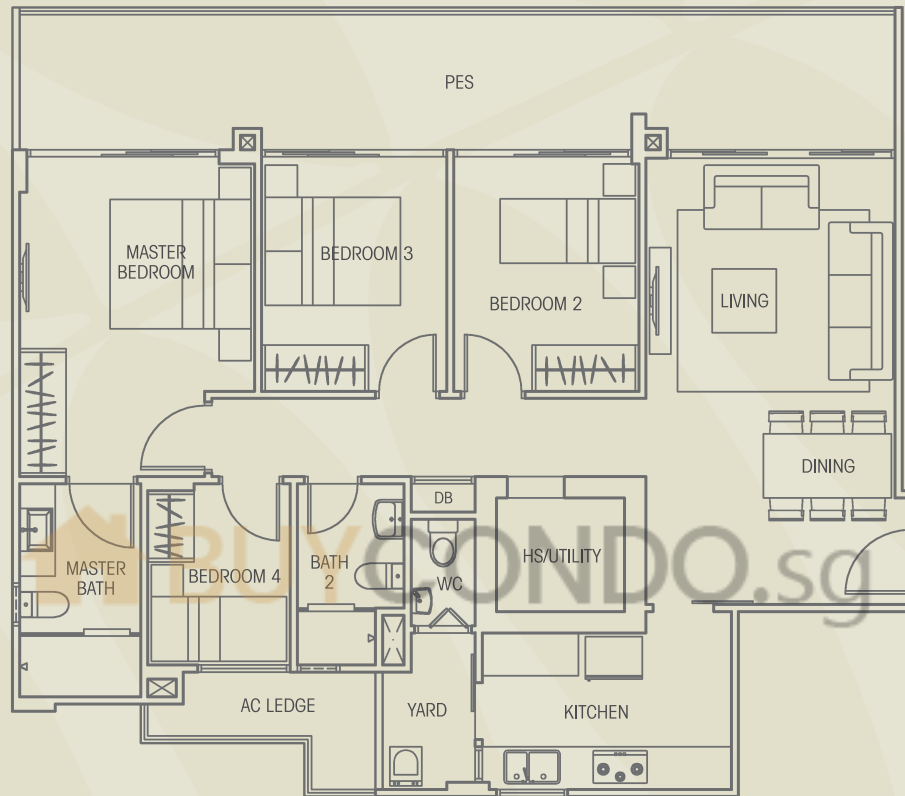


All plans are not to scale and subject to amendments as approved by the relevant authorities. Floor areas are approximate measurements and subject to final survey.

TYPE D1-G (4-Bedroom)

Block 42 #01-19 & #01-20

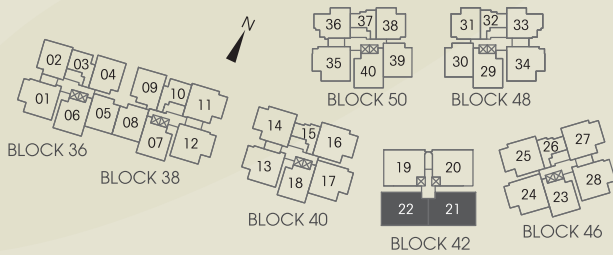
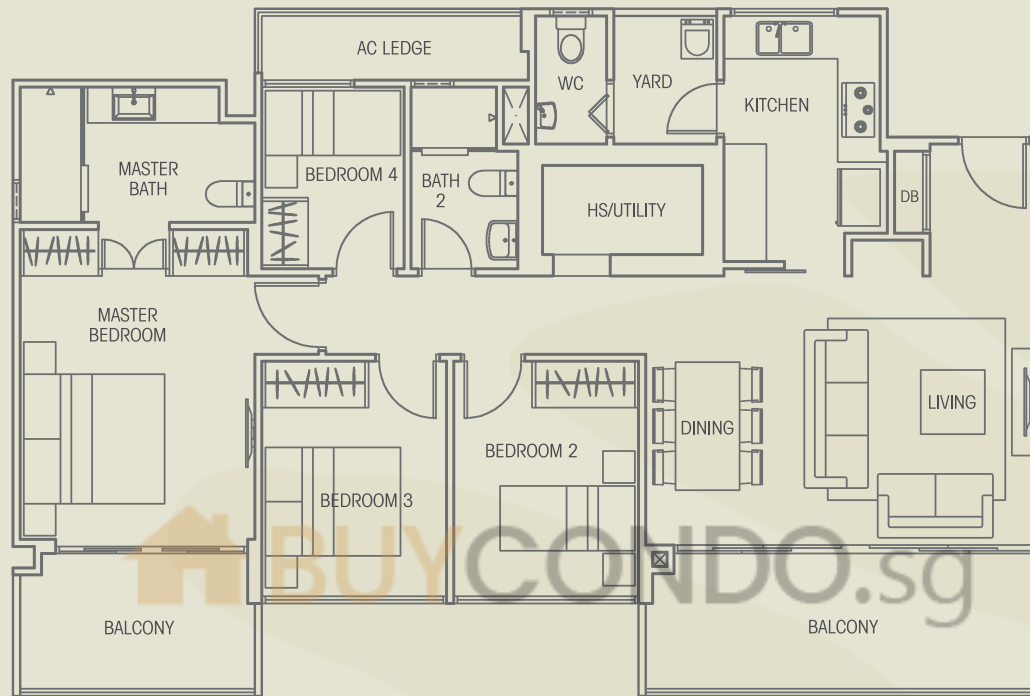
Area 1367 sqft



All plans are not to scale and subject to amendments as approved by the relevant authorities. Floor areas are approximate measurements and subject to final survey.

TYPE D2 (4-Bedroom)

Block 42 #02-21 to #11-21
#02-22 to #11-22
Area 1324 sqft

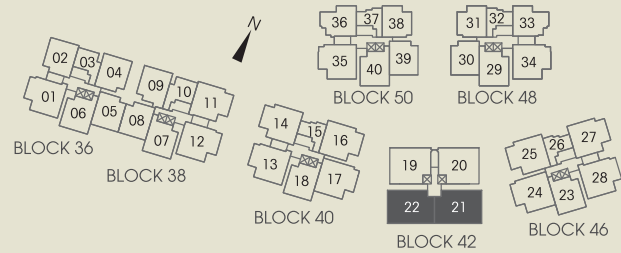
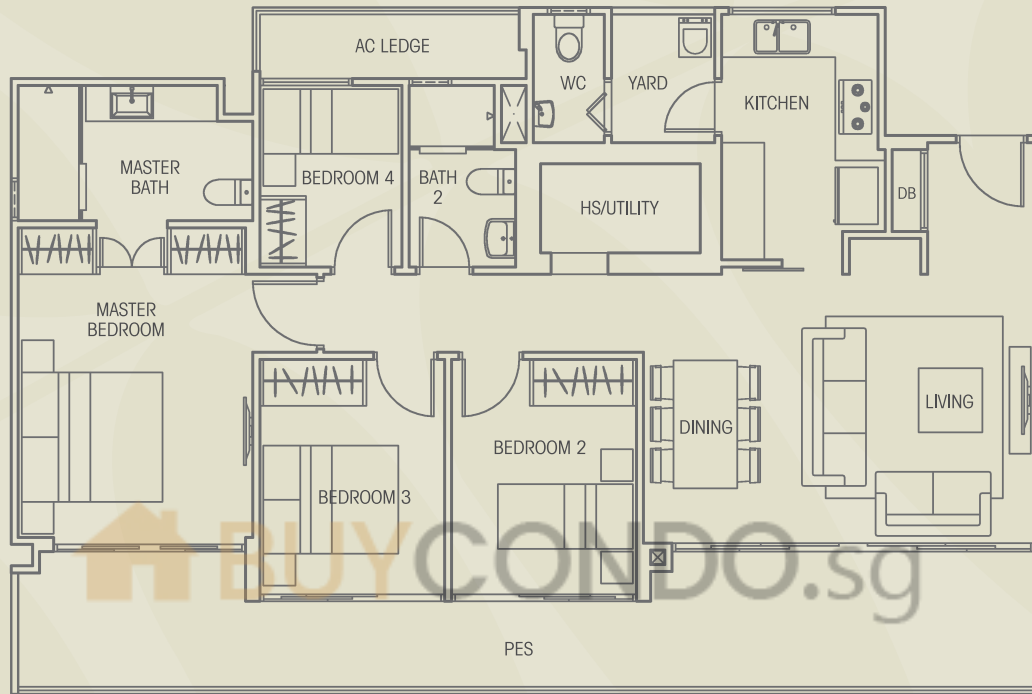


All plans are not to scale and subject to amendments as approved by the relevant authorities. Floor areas are approximate measurements and subject to final survey.

TYPE D2-G (4-Bedroom)

Block 42 #01-21 & #01-22

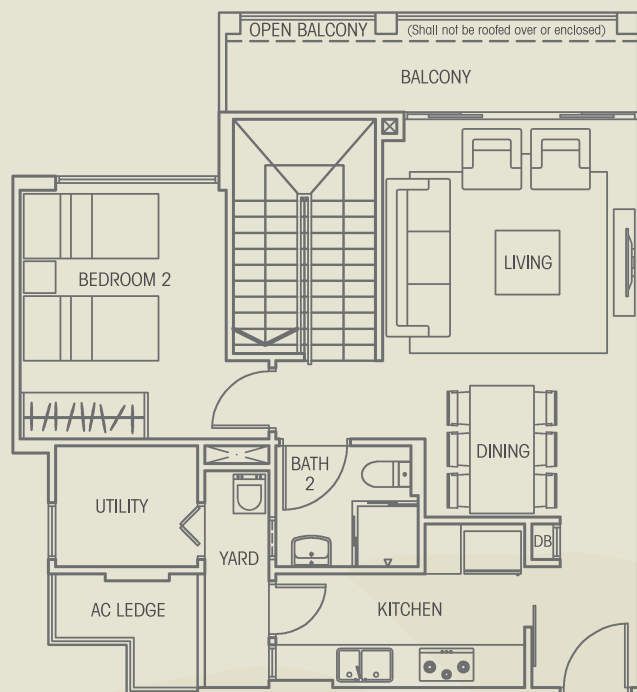
Area 1399 sqft



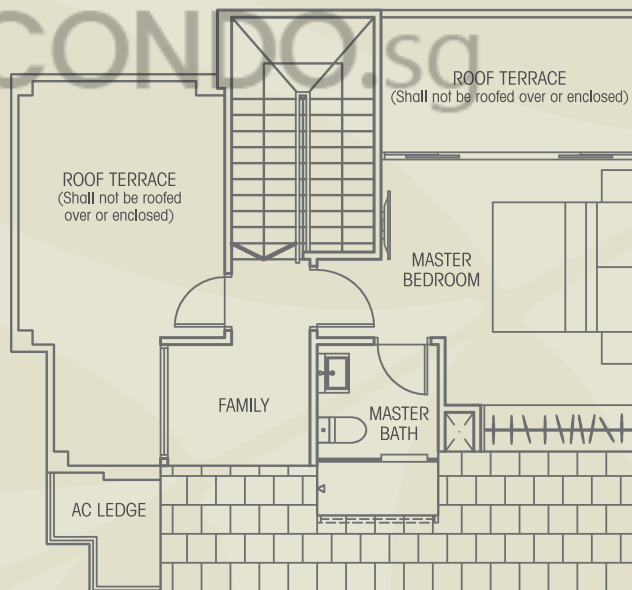
All plans are not to scale and subject to amendments as approved by the relevant authorities. Floor areas are approximate measurements and subject to final survey.

TYPE B1-P (2-Bedroom Penthouse + Family + Utility)

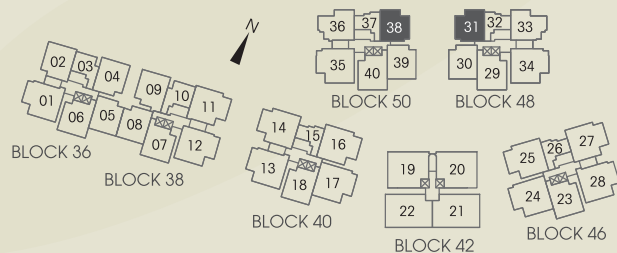
Block 48 #12-31
 Block 50 #12-38
 Area 1410 sqft



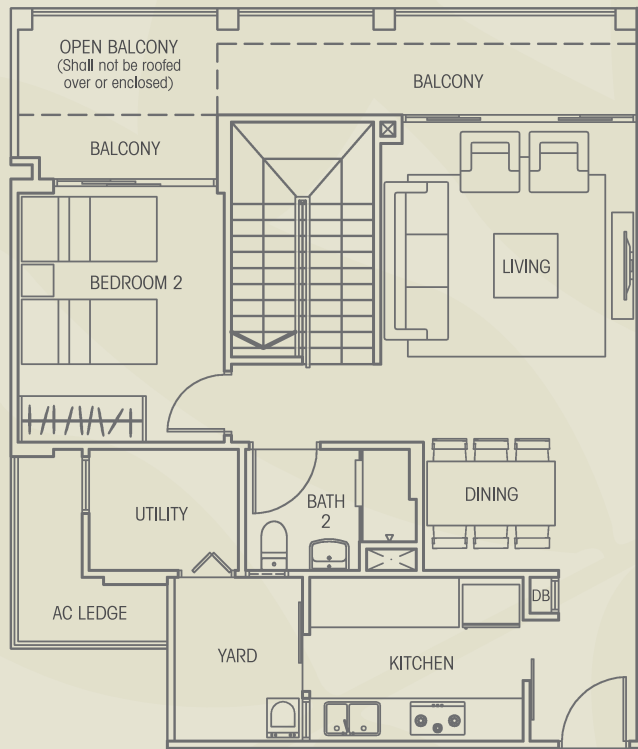
LOWER STOREY



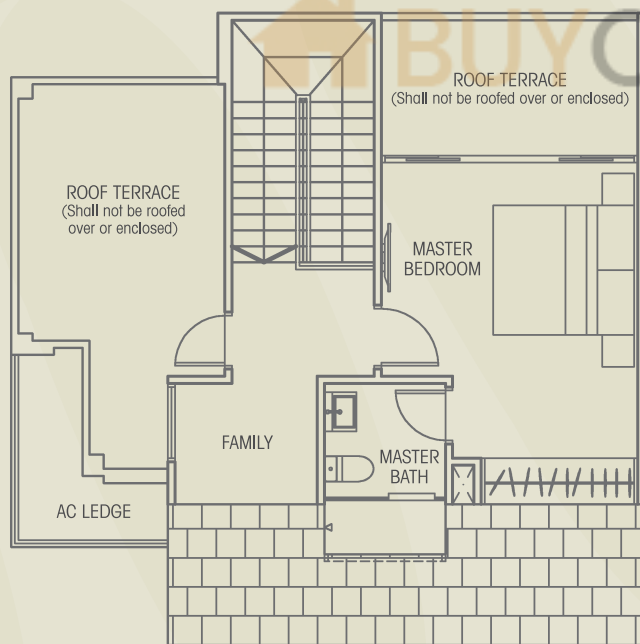
UPPER STOREY



All plans are not to scale and subject to amendments as approved by the relevant authorities. Floor areas are approximate measurements and subject to final survey.



LOWER STOREY



UPPER STOREY

TYPE B2-P

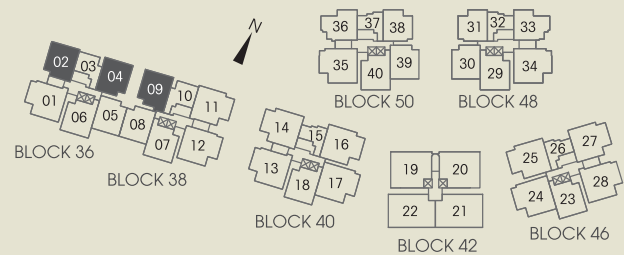
(2-Bedroom Penthouse + Family + Utility)

Block 36 #12-02 & #12-04

Block 38 #12-09

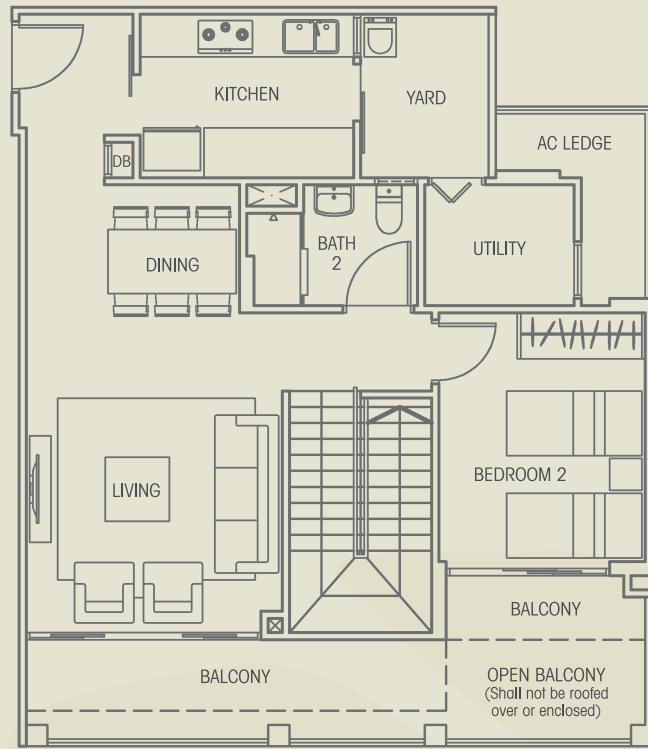
Area 1604 sqft

BUY CONDO.sg

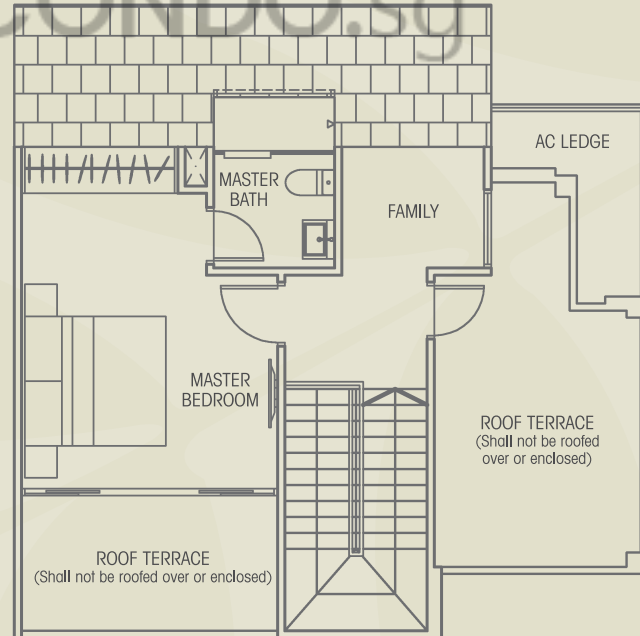


TYPE B3-P (2-Bedroom Penthouse + Family + Utility)

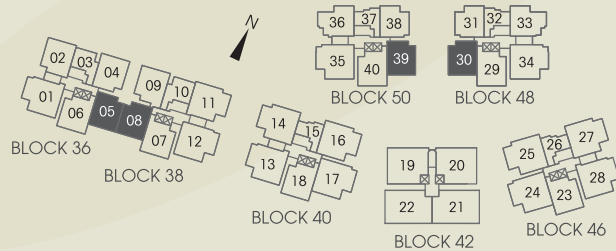
- Block 36 #12-05
- Block 38 #12-08
- Block 48 #11-30
- Block 50 #11-39
- Area 1604 sqft



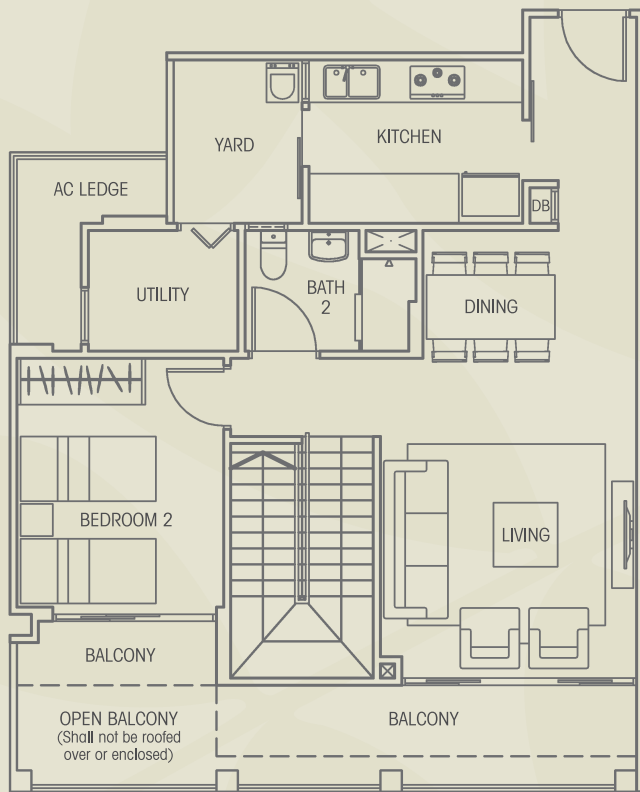
LOWER STOREY



UPPER STOREY



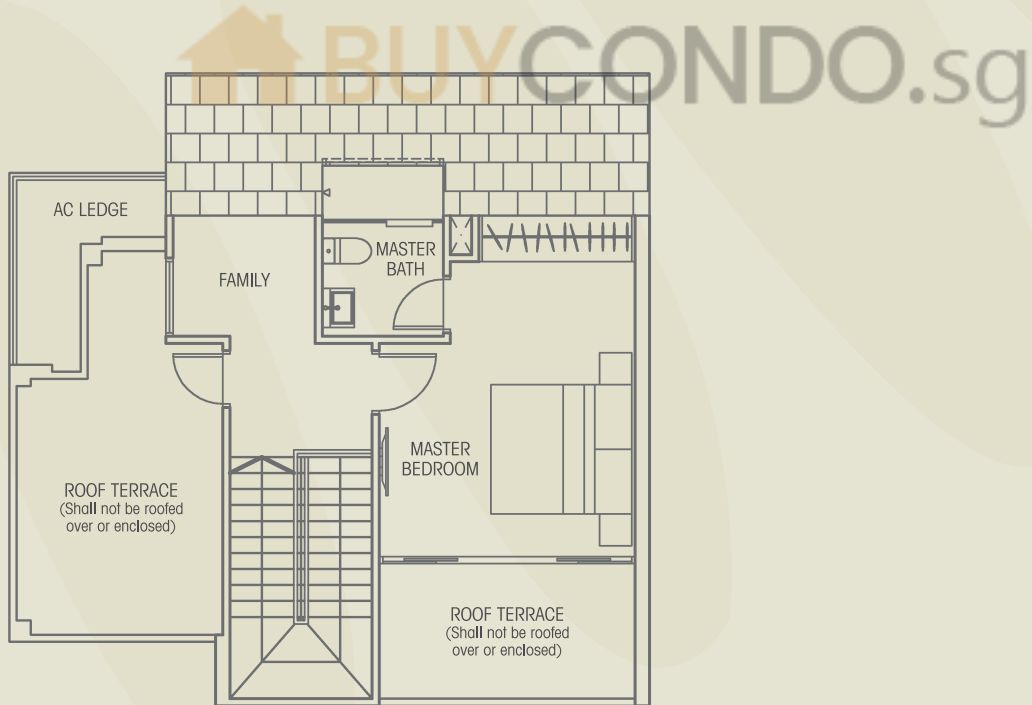
All plans are not to scale and subject to amendments as approved by the relevant authorities. Floor areas are approximate measurements and subject to final survey.



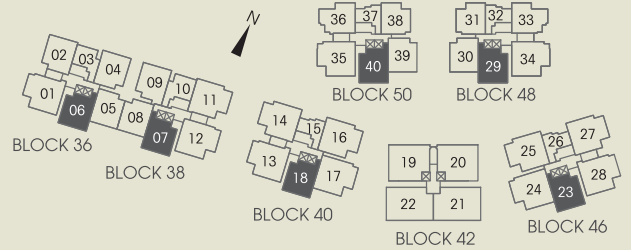
TYPE B4-P
(2-Bedroom Penthouse + Family + Utility)

- Block 36 #12-06
- Block 38 #12-07
- Block 40 #12-18
- Block 46 #12-23
- Block 48 #11-29
- Block 50 #11-40
- Area 1625 sqft

LOWER STOREY



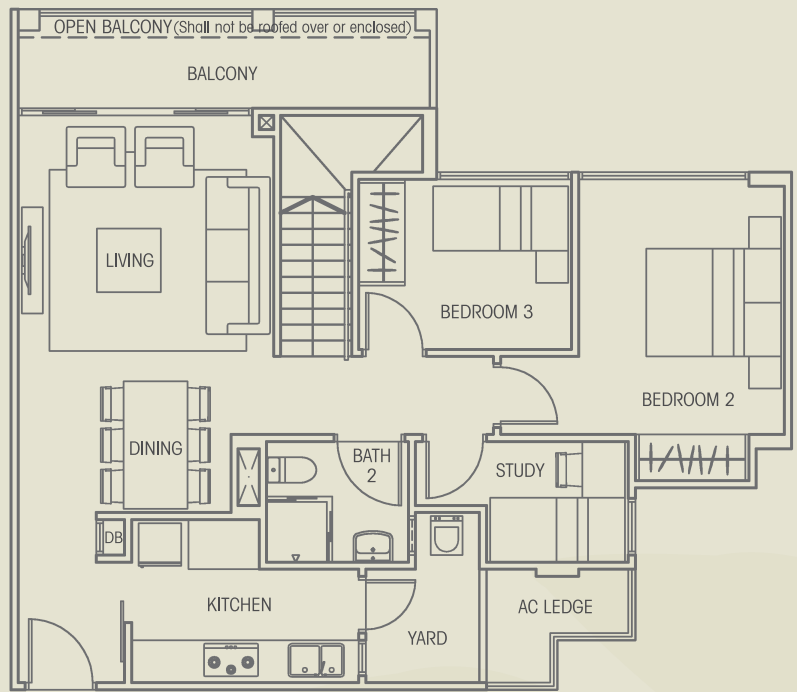
UPPER STOREY



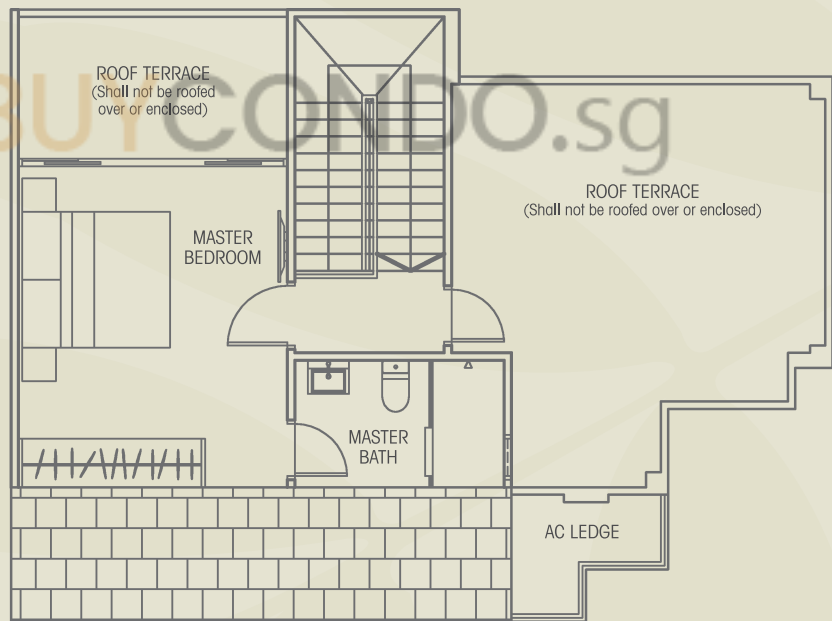
All plans are not to scale and subject to amendments as approved by the relevant authorities. Floor areas are approximate measurements and subject to final survey.

TYPE B5-P
 (3-Bedroom Penthouse
 + Study)

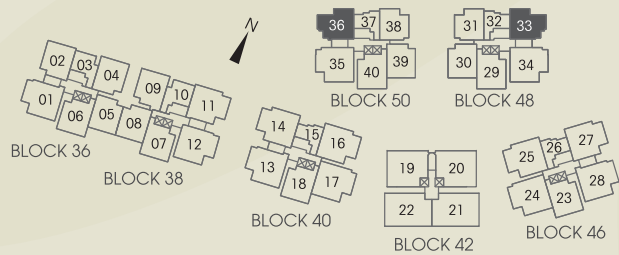
Block 48 #12-33
 Block 50 #12-36
 Area 1625 sqft



LOWER STOREY



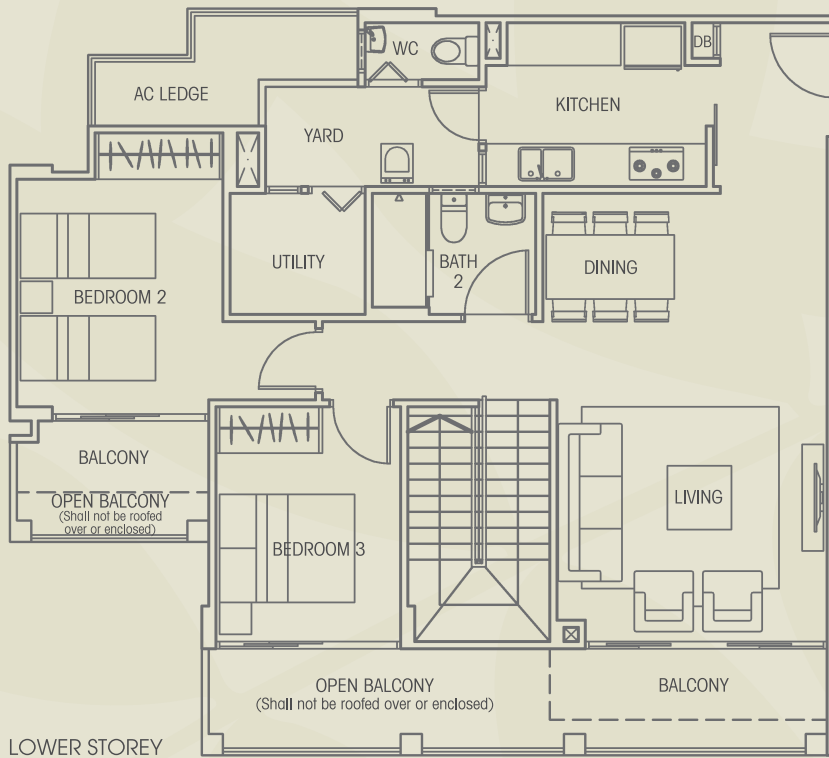
UPPER STOREY



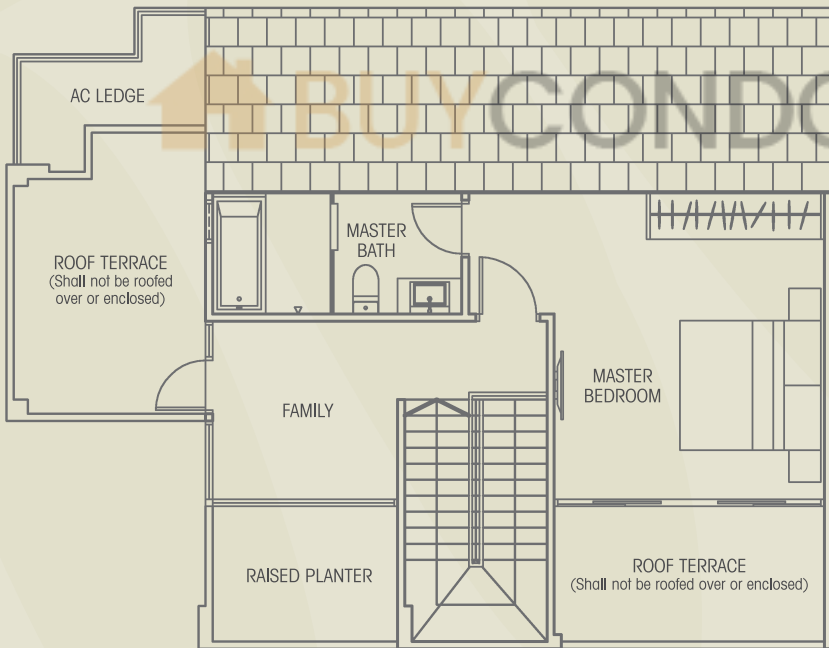
All plans are not to scale and subject to amendments as approved by the relevant authorities. Floor areas are approximate measurements and subject to final survey.

TYPE C1-P
 (3-Bedroom Penthouse
 + Family + Utility)

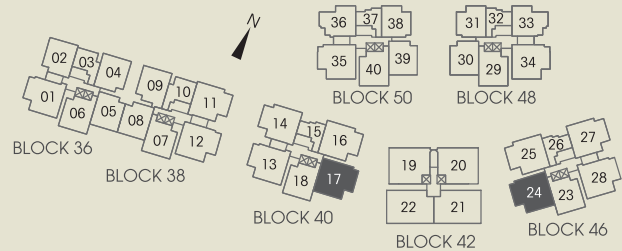
Block 40 #12-17
 Block 46 #12-24
 Area 1927 sqft



LOWER STOREY



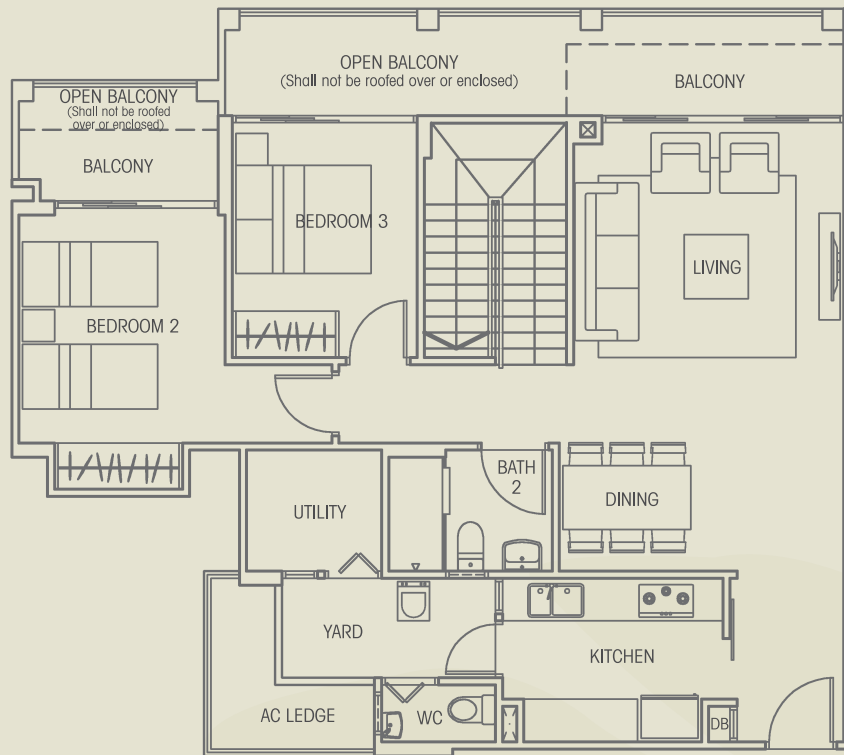
UPPER STOREY



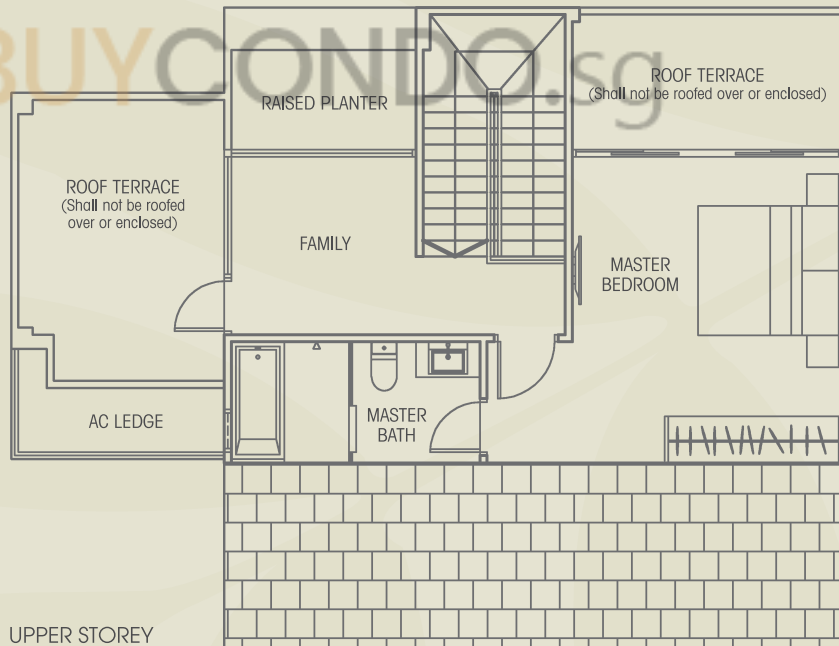
All plans are not to scale and subject to amendments as approved by the relevant authorities. Floor areas are approximate measurements and subject to final survey.

TYPE C2-P
 (3-Bedroom Penthouse
 + Family + Utility)

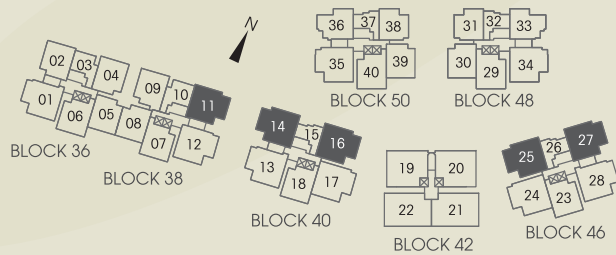
- Block 38 #12-11
- Block 40 #12-14 & #12-16
- Block 46 #12-25 & #12-27
- Area 1916 sqft



LOWER STOREY



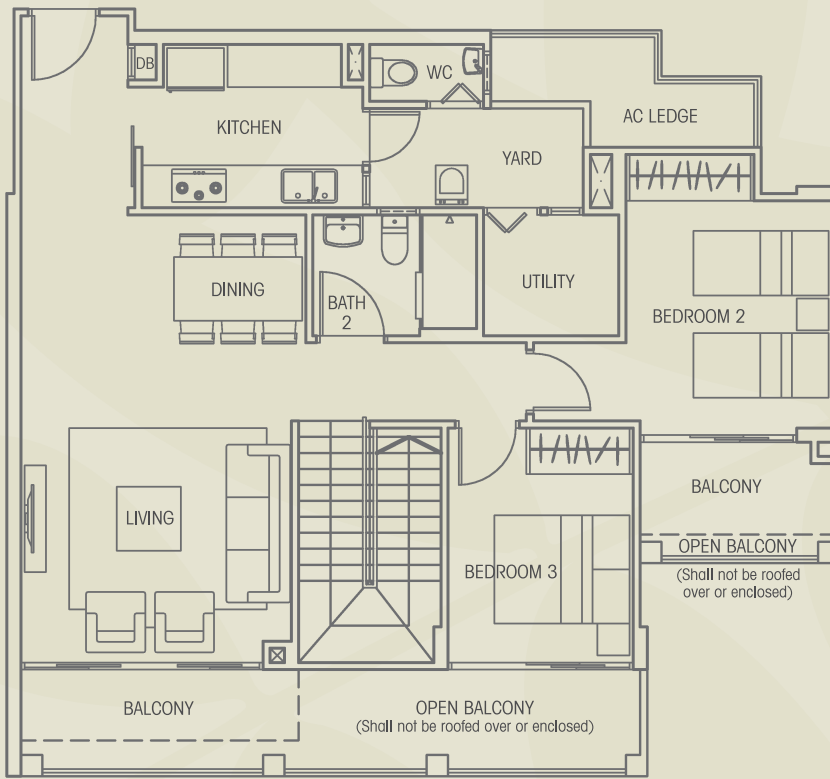
UPPER STOREY



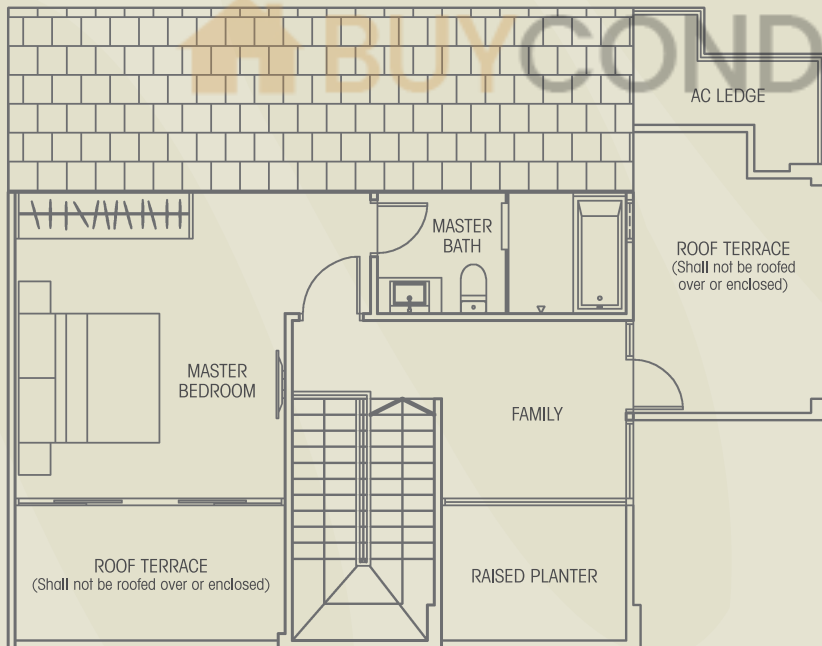
All plans are not to scale and subject to amendments as approved by the relevant authorities. Floor areas are approximate measurements and subject to final survey.

TYPE C3-P
 (3-Bedroom Penthouse
 + Family + Utility)

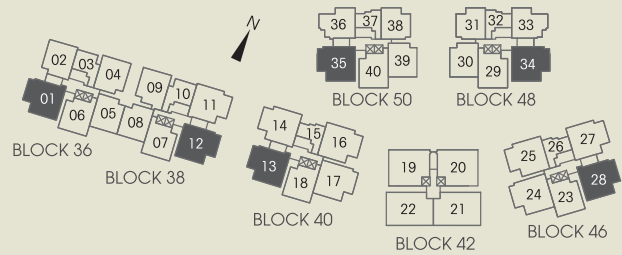
Block 36	#12-01
Block 38	#12-12
Block 40	#12-13
Block 46	#12-28
Block 48	#11-34
Block 50	#11-35
Area	1938 sqft



LOWER STOREY

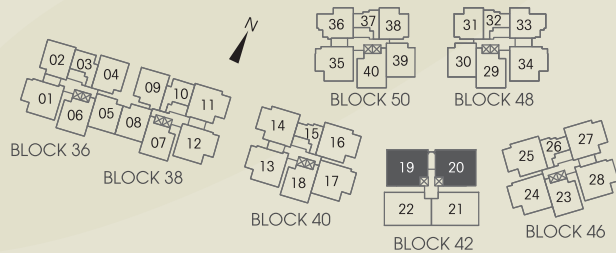
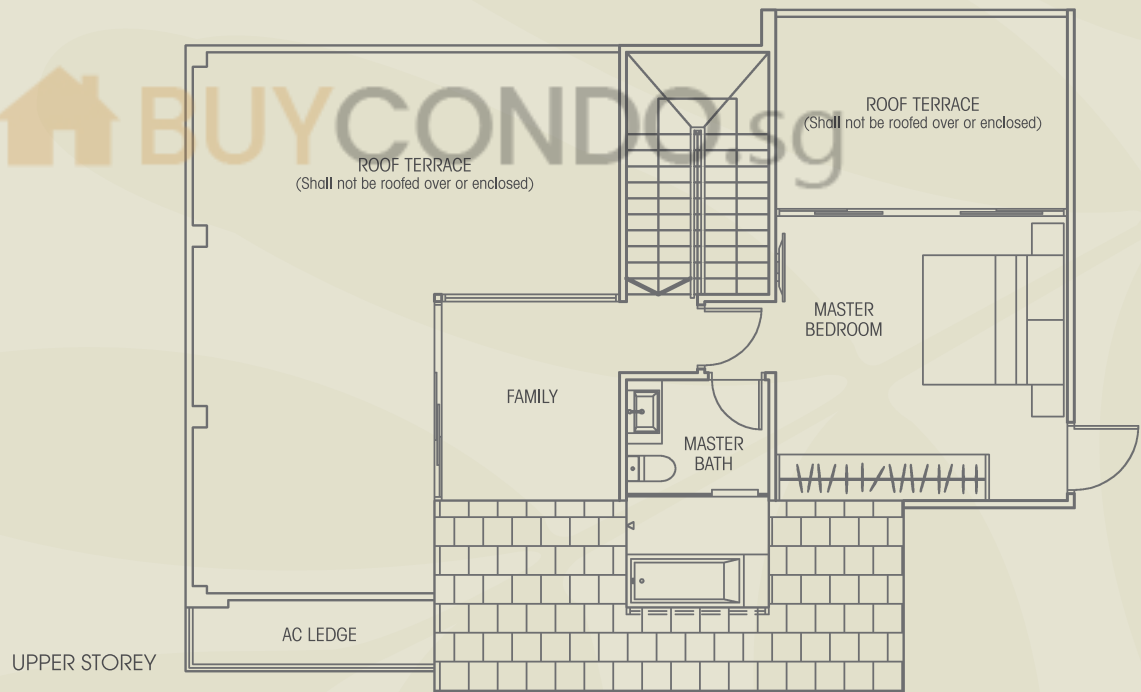
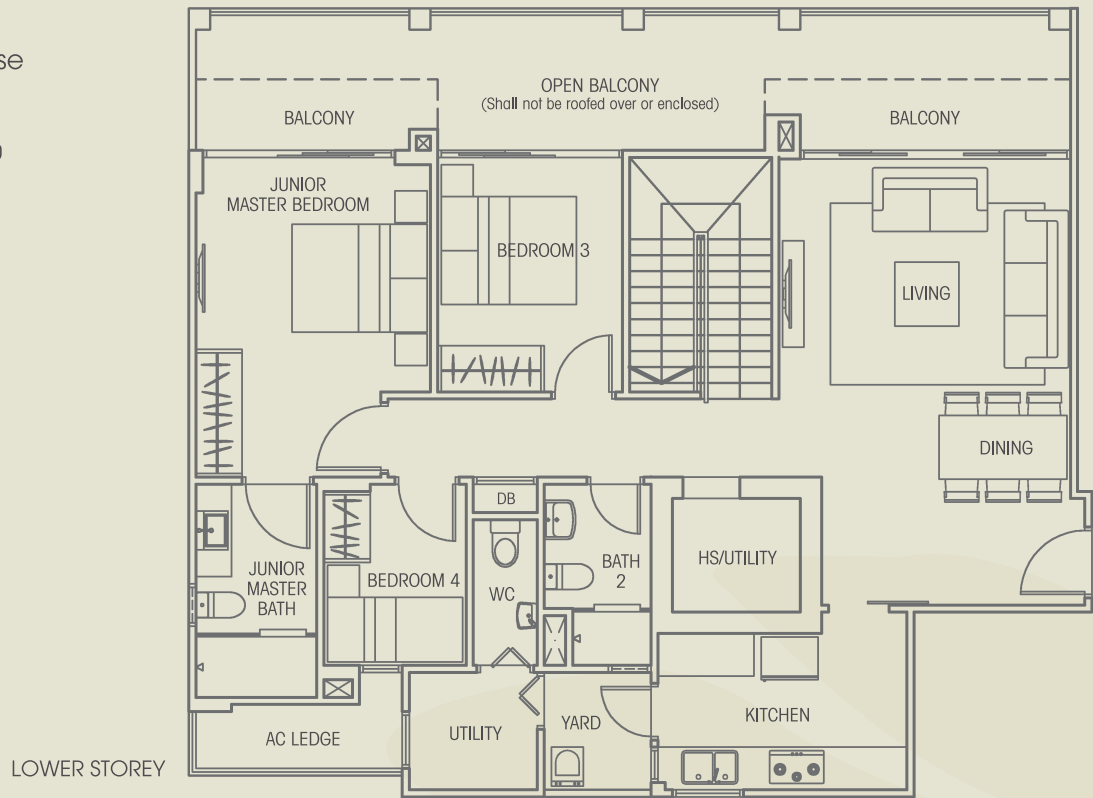


UPPER STOREY

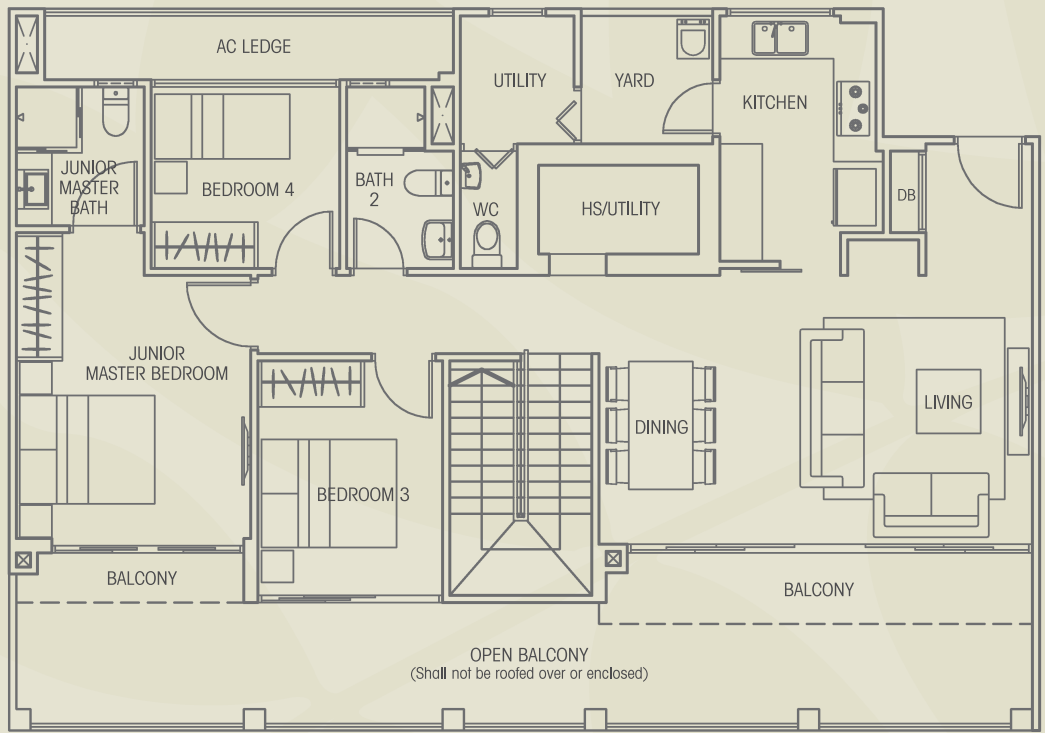


TYPE D1-P
 (4-Bedroom Penthouse
 + Family + Utility)

Block 42 #12-19 & #12-20
 Area 2400 sqft



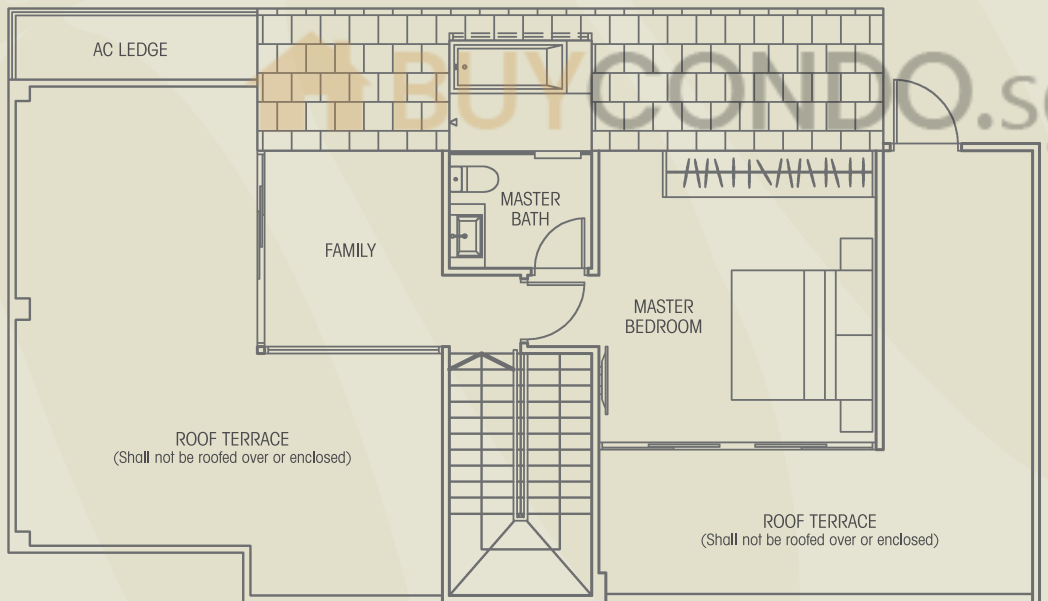
All plans are not to scale and subject to amendments as approved by the relevant authorities. Floor areas are approximate measurements and subject to final survey.



TYPE D2-P
 (4-Bedroom Penthouse
 + Family + Utility)

Block 42 #12-21 & #12-22
 Area 2594 sqft

LOWER STOREY



UPPER STOREY

