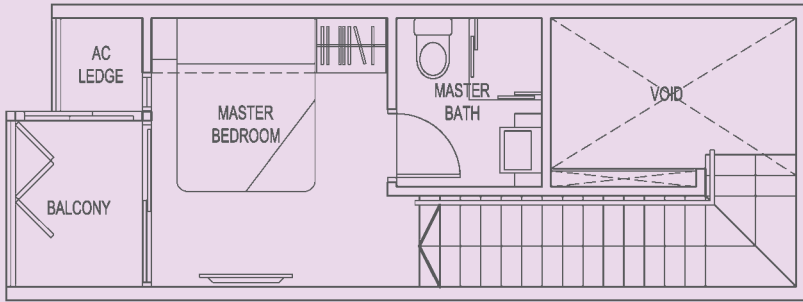
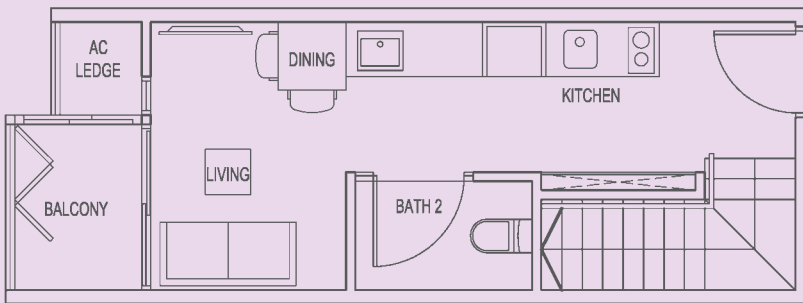


TYPE A1 (1-Bedroom + 2-Bathroom)

Unit #02-18, #02-20, #04-14, #04-16, #04-18, #04-20,
#06-14, #06-16, #06-18, #06-20
(Mirrored)
#02-19, #04-13, #04-15, #04-17, #04-19,
#06-13, #06-15, #06-17, #06-19
Area 52 Sqm / 560 Sqft



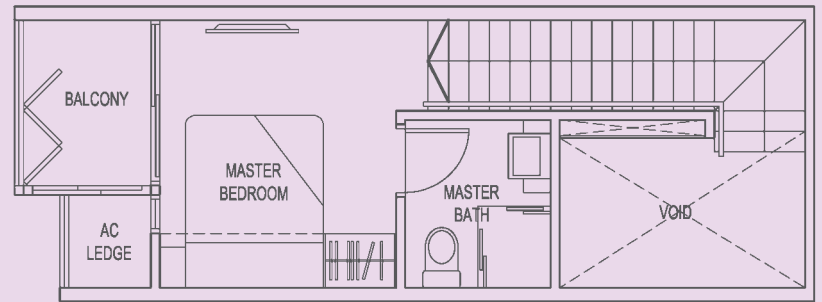
UPPER STOREY



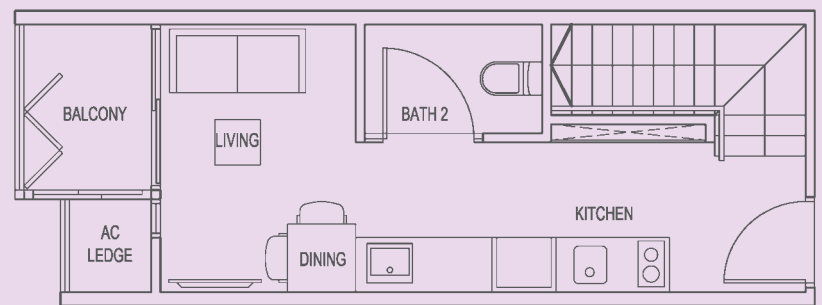
LOWER STOREY

TYPE A1a (1-Bedroom + 2-Bathroom)

Unit #02-21, #02-22, #04-21, #04-22, #06-21, #06-22
(Mirrored)
#04-11, #04-12, #06-11, #06-12
Area 52 Sqm / 560 Sqft



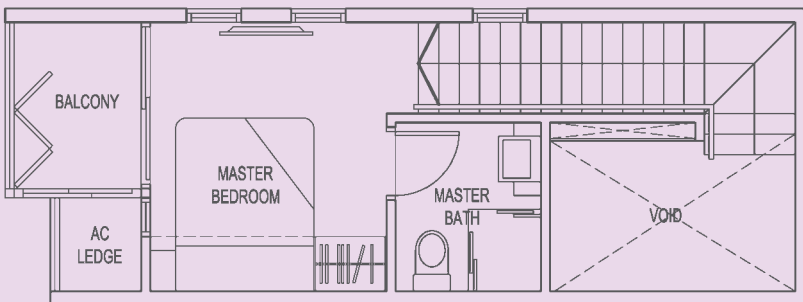
UPPER STOREY



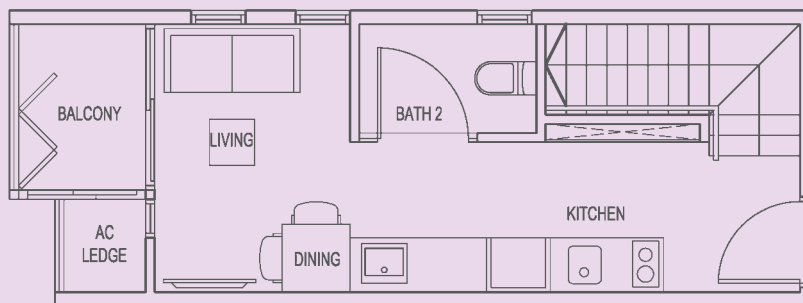
LOWER STOREY

TYPE A1b (1-Bedroom + 2-Bathroom)

Unit #02-23, #04-23, #06-23
Area 52 Sqm / 560 Sqft

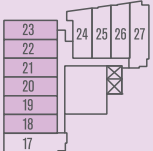


UPPER STOREY

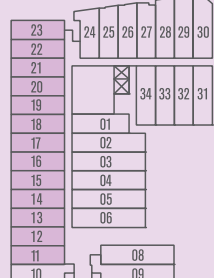


LOWER STOREY

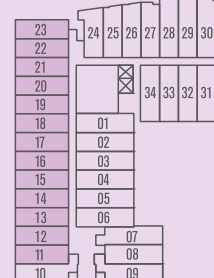
2ND STOREY



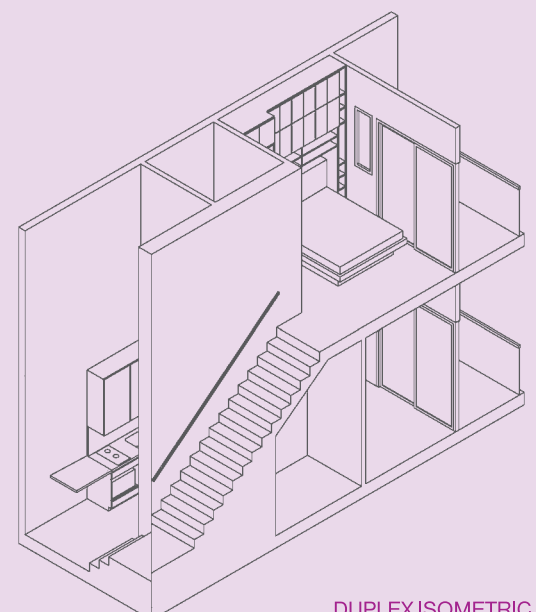
4TH STOREY



6TH STOREY



All plans are inclusive of balcony and/or roof terrace and/or a/c ledge and/or strata void area and/or planter, where applicable. All areas subject to final surveyor calculation.
Building Plan Approval Number: A1404-00357-2012-BP01 Dated 03 January 2013

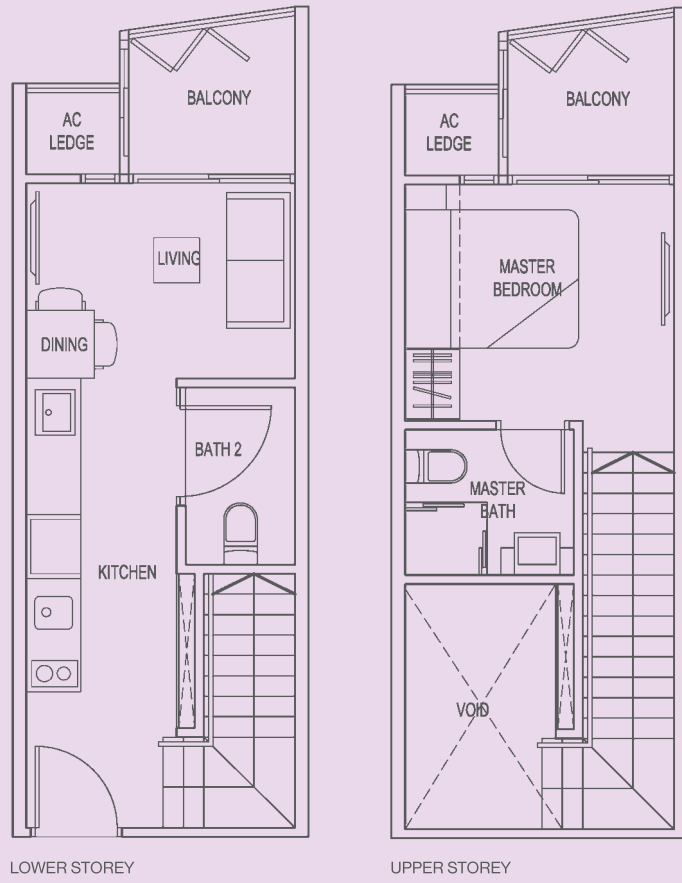


DUPLEX ISOMETRIC

TYPE A1C (1-Bedroom + 2-Bathroom)

Unit #02-26, #04-26, #06-26

Area 54 Sqm / 581 Sqft



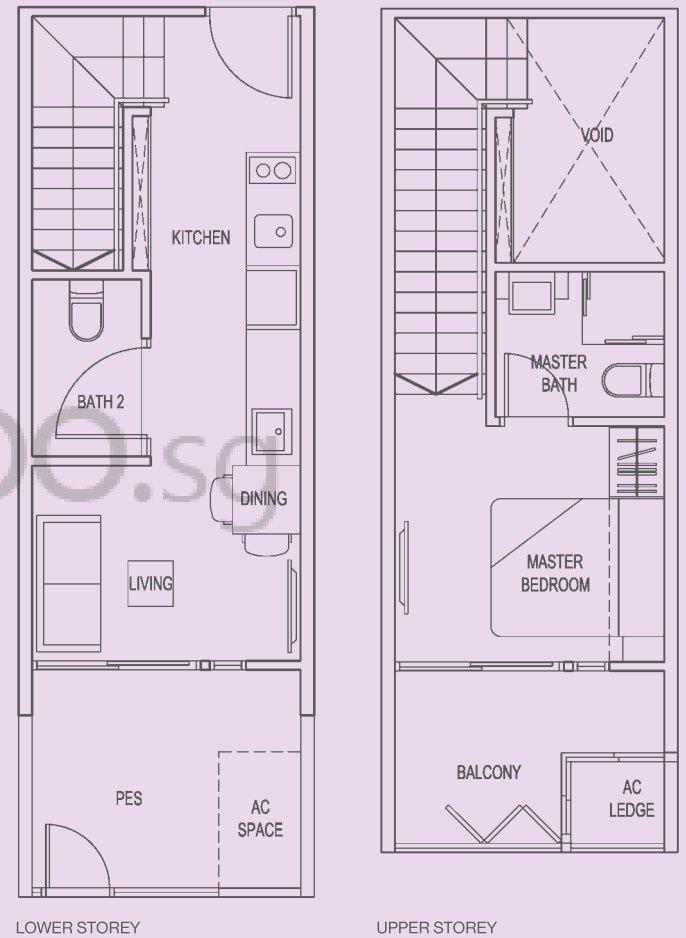
TYPE A2-G (1-Bedroom + 2-Bathroom)

Unit #04-32, #04-34

(Mirrored)

#04-33

Area 58 Sqm / 624 Sqft



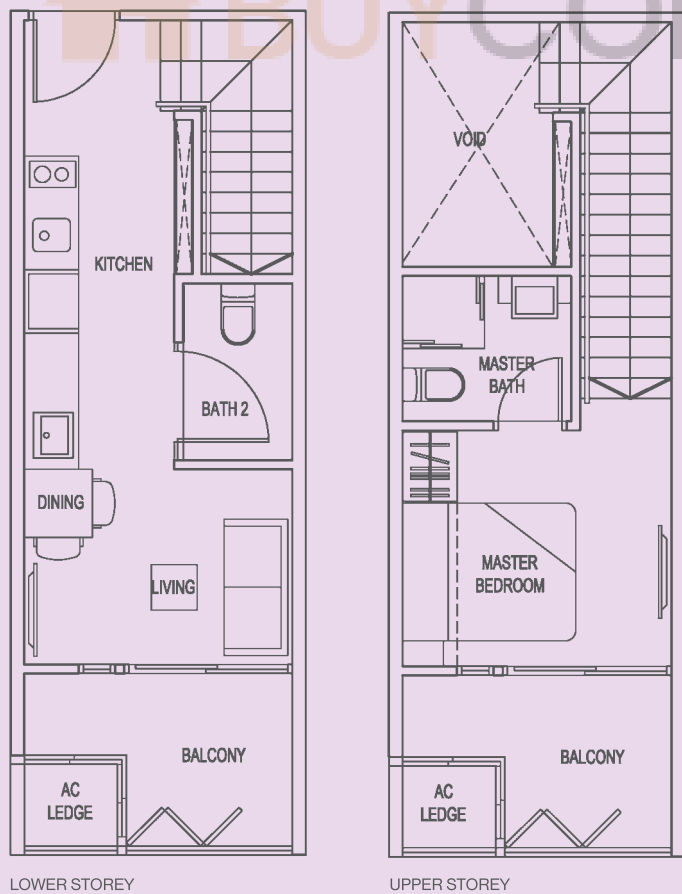
TYPE A2 (1-Bedroom + 2-Bathroom)

Unit #06-33

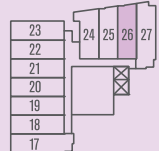
(Mirrored)

#06-32, #06-34

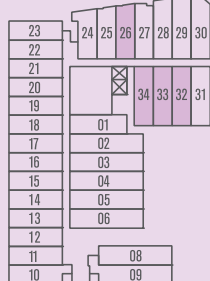
Area 56 Sqm / 603 Sqft



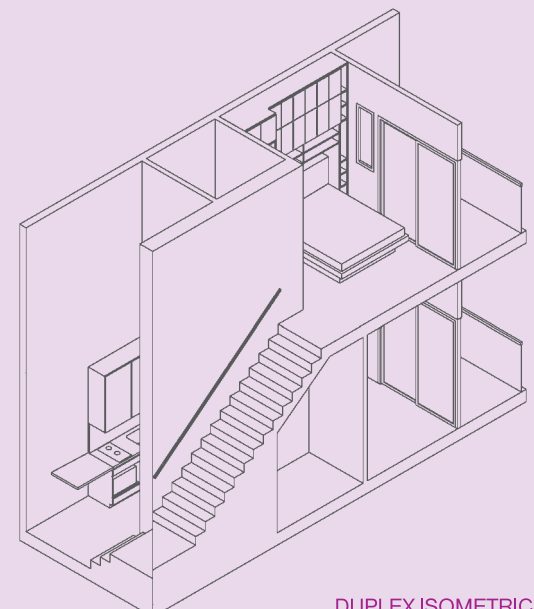
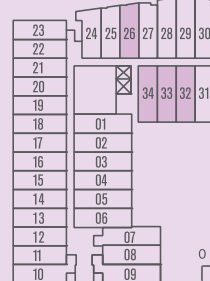
2ND STOREY



4TH STOREY



6TH STOREY

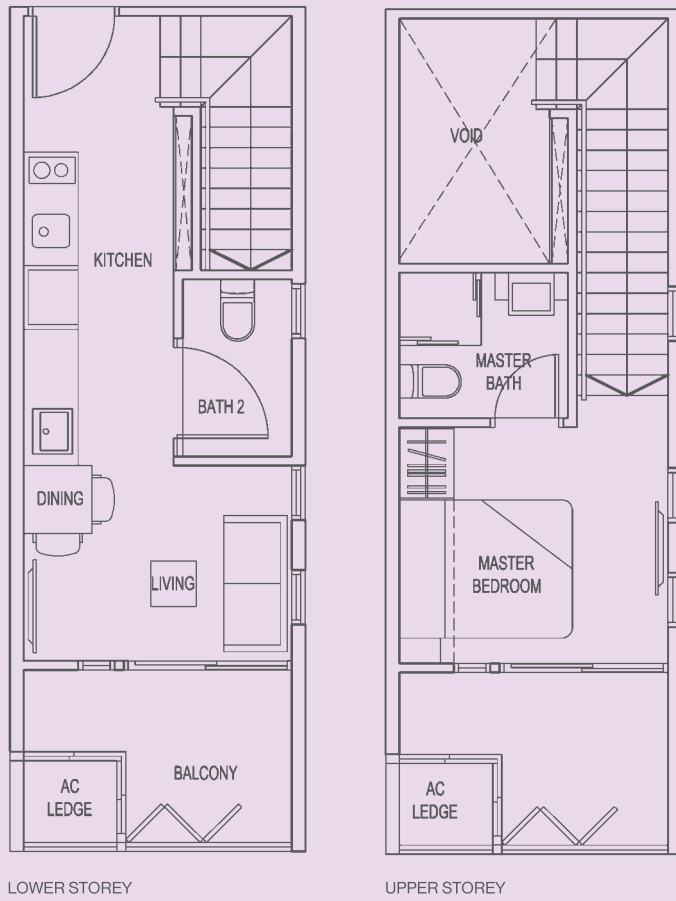


All plans are inclusive of balcony and/or roof terrace and/or a/c ledge and/or strata void area and/or planter, where applicable. All areas subject to final surveyor calculation. Building Plan Approval Number: A1404-00357-2012-BP01 Dated 03 January 2013

TYPE A2a (1-Bedroom + 2-Bathroom)

Unit #06-31

Area 56 Sqm / 603 Sqft



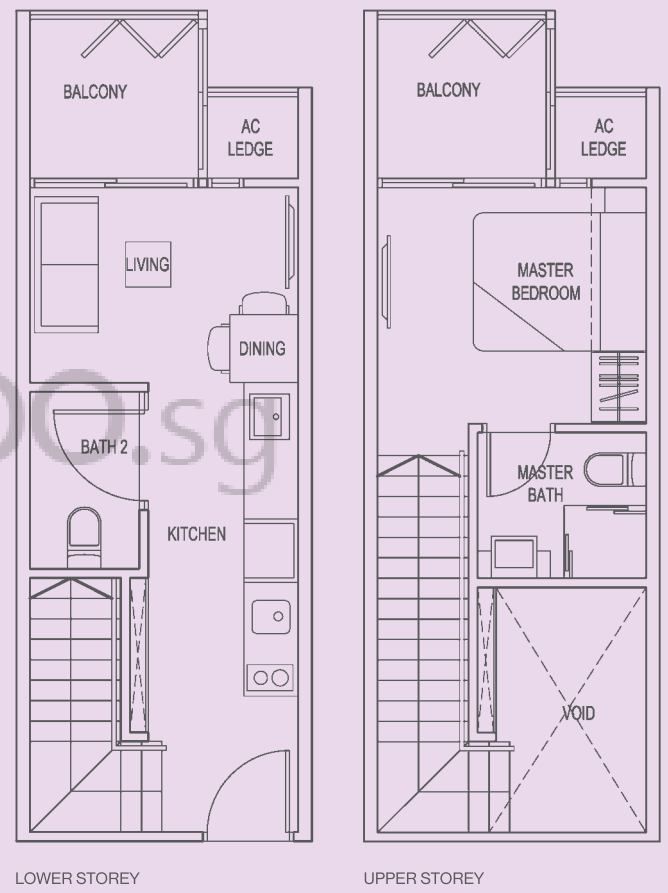
TYPE A3 (1-Bedroom + 2-Bathroom)

Unit #04-27, #06-27, #06-29

(Mirrored)

#06-28

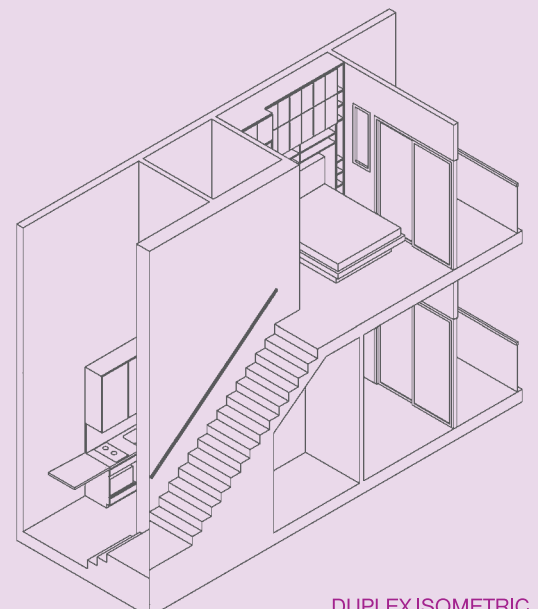
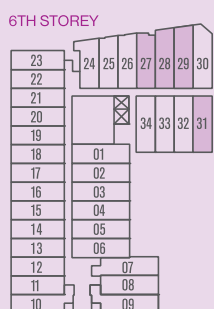
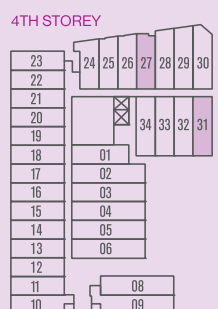
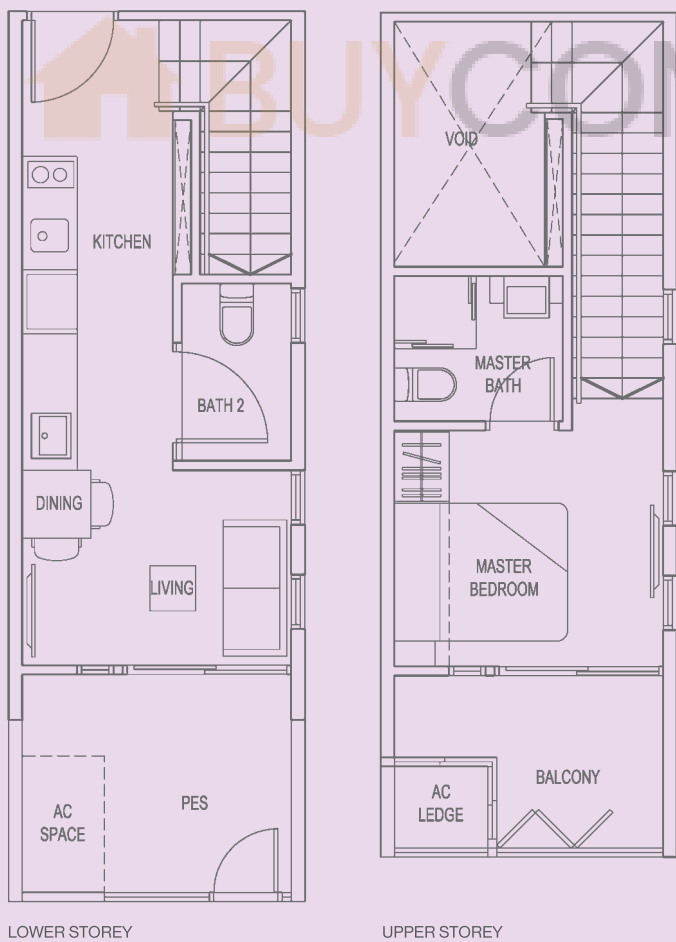
Area 54 Sqm / 581 Sqft



TYPE A2a-G (1-Bedroom + 2-Bathroom)

Unit #04-31

Area 58 Sqm / 624 Sqft

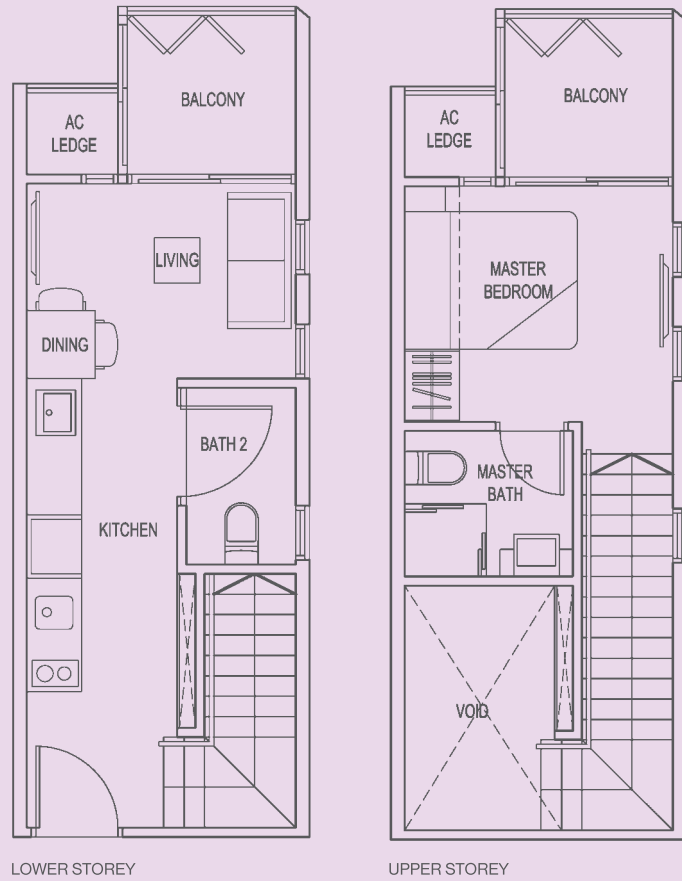


All plans are inclusive of balcony and/or roof terrace and/or a/c ledge and/or strata void area and/or planter, where applicable. All areas subject to final surveyor calculation.
Building Plan Approval Number: A1404-00357-2012-BP01 Dated 03 January 2013

TYPE A3a (1-Bedroom + 2-Bathroom)

Unit #06-30

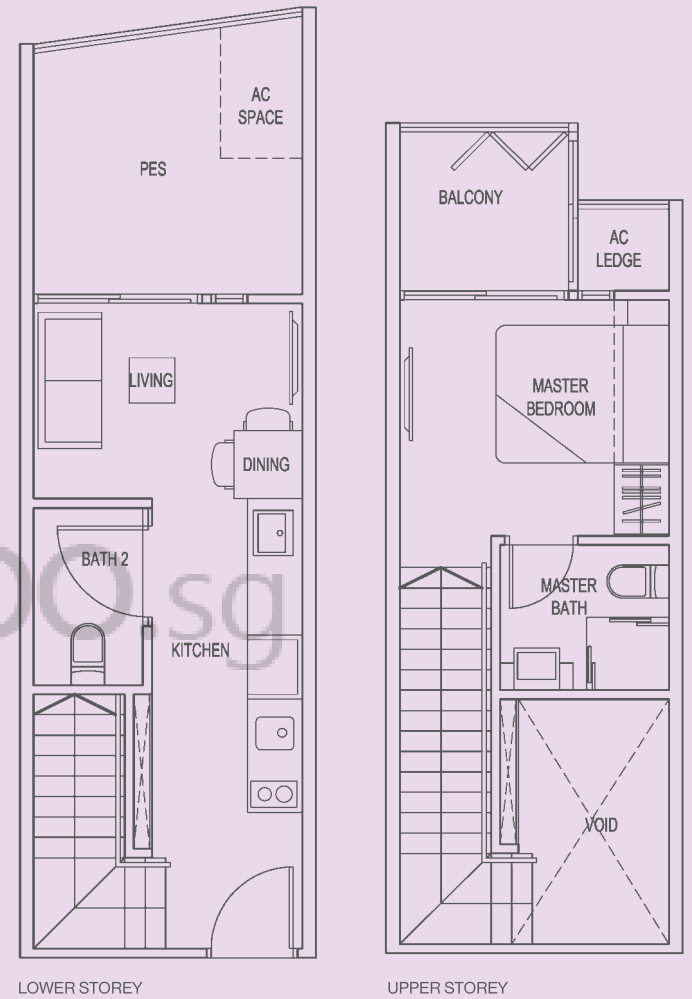
Area 54 Sqm / 581 Sqft



TYPE A3c-G (1-Bedroom + 2-Bathroom)

Unit #04-29

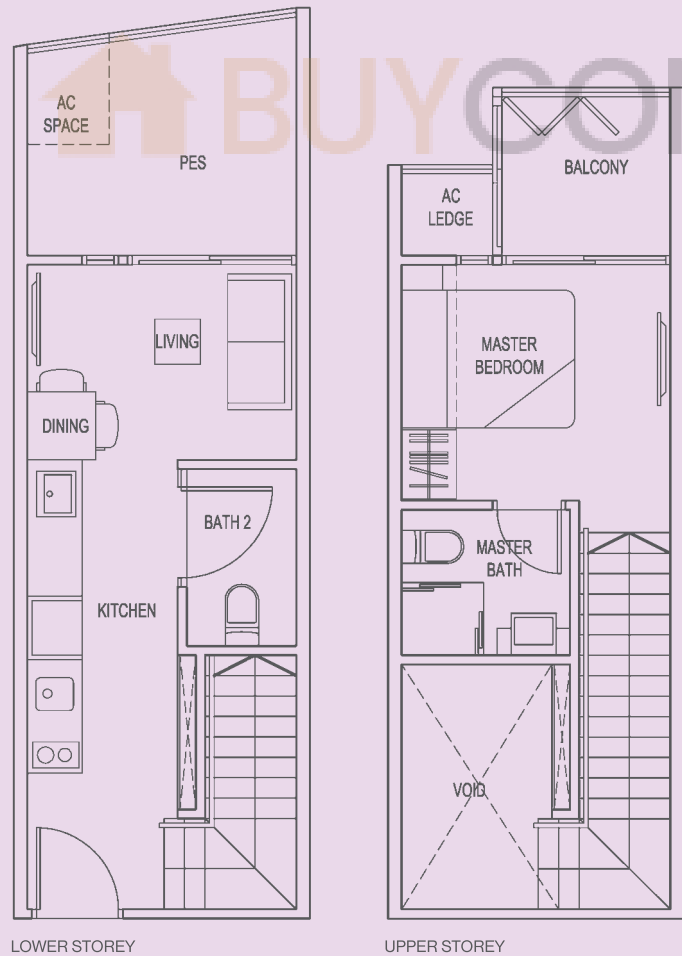
Area 58 Sqm / 624 Sqft



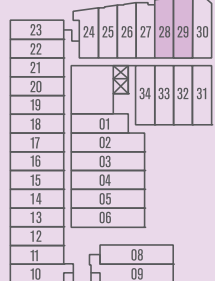
TYPE A3b-G (1-Bedroom + 2-Bathroom)

Unit #04-28

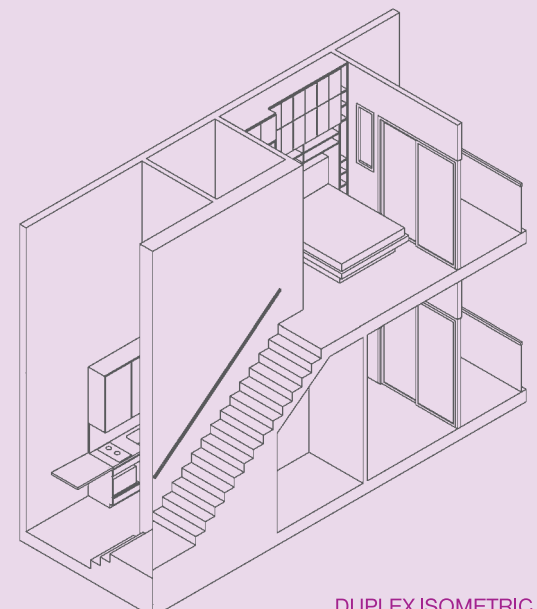
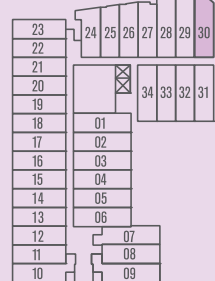
Area 57 Sqm / 614 Sqft



4TH STOREY



6TH STOREY

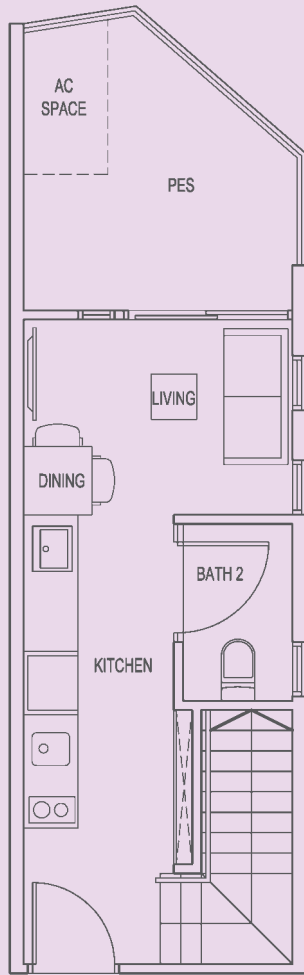


All plans are inclusive of balcony and/or roof terrace and/or a/c ledge and/or strata void area and/or planter, where applicable. All areas subject to final surveyor calculation. Building Plan Approval Number: A1404-00357-2012-BP01 Dated 03 January 2013

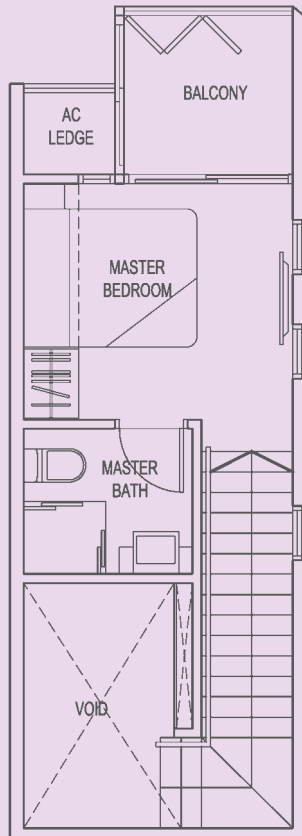
TYPE A3d-G (1-Bedroom + 2-Bathroom)

Unit #04-30

Area 58 Sqm / 624 Sqft



LOWER STOREY

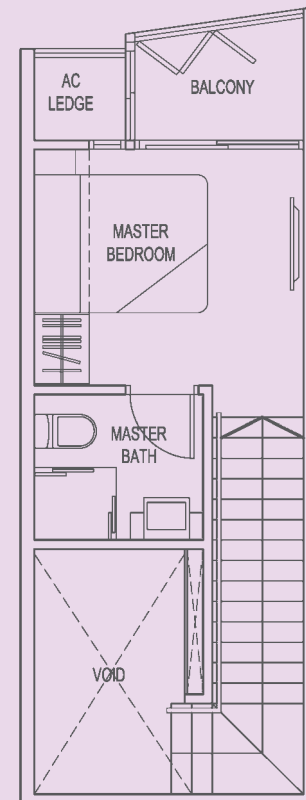


UPPER STOREY

TYPE A5 (1-Bedroom + 2-Bathroom)

Unit #02-25, #04-25, #06-25

Area 52 Sqm / 560 Sqft

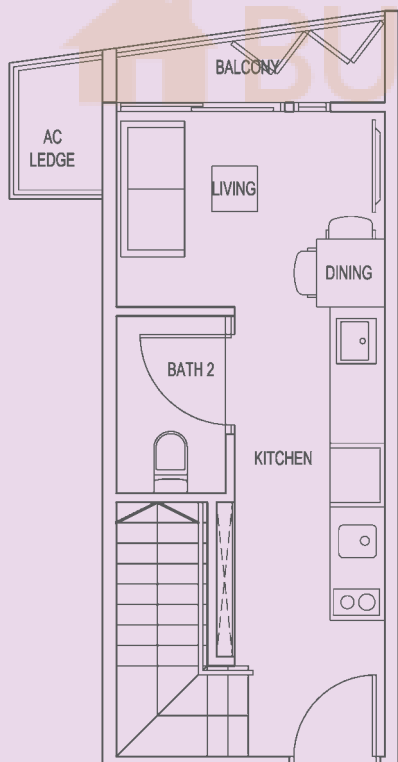


UPPER STOREY

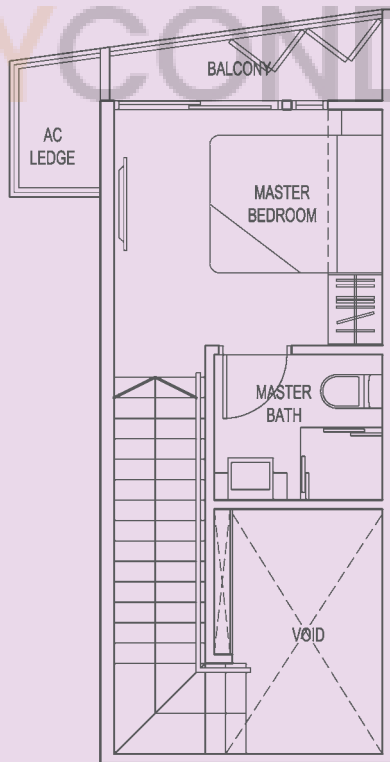
TYPE A4 (1-Bedroom + 2-Bathroom)

Unit #02-24, #04-24, #06-24

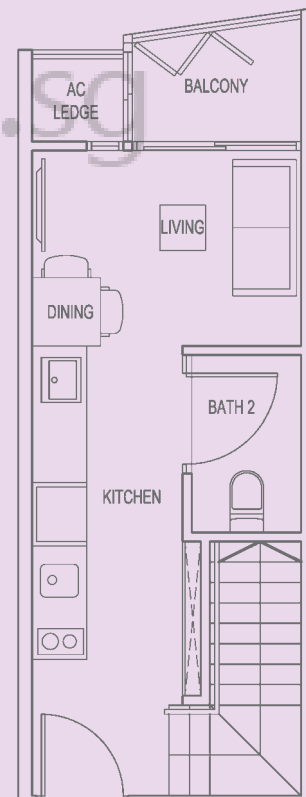
Area 52 Sqm / 560 Sqft



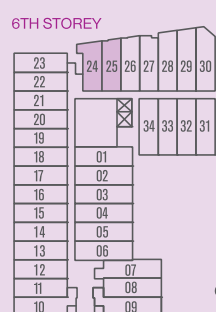
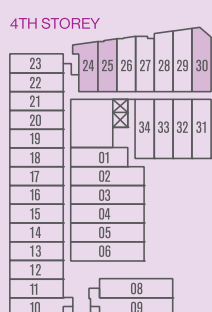
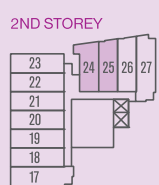
LOWER STOREY



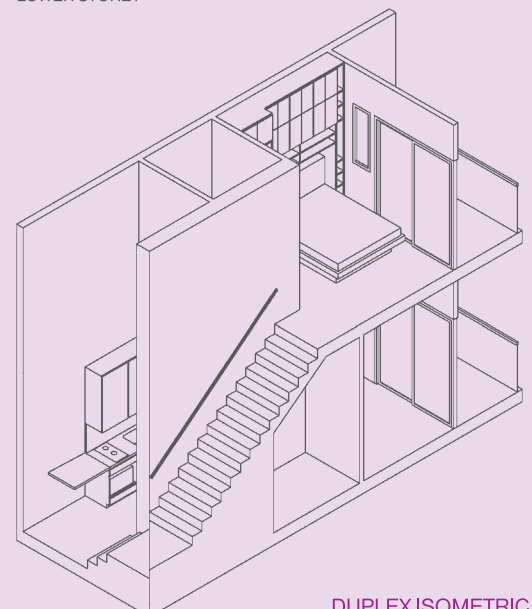
UPPER STOREY



LOWER STOREY



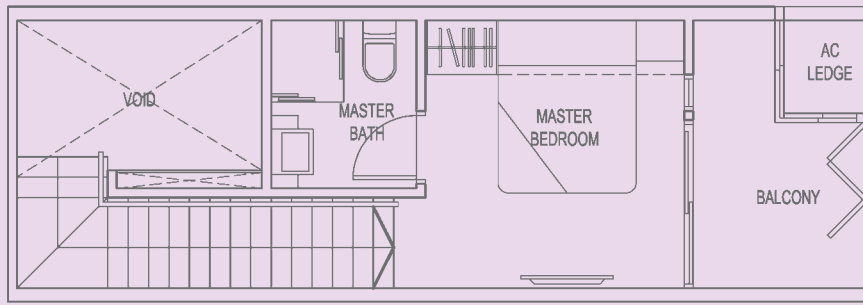
All plans are inclusive of balcony and/or roof terrace and/or a/c ledge and/or strata void area and/or planter, where applicable. All areas subject to final surveyor calculation.
Building Plan Approval Number: A1404-00357-2012-BP01 Dated 03 January 2013



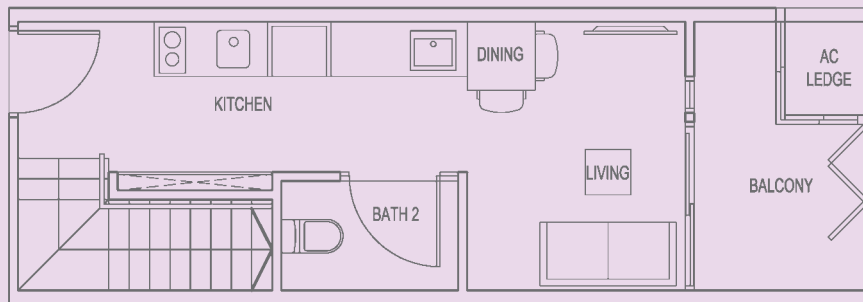
DUPLEX ISOMETRIC

TYPE A6 (1-Bedroom + 2-Bathroom)

Unit #06-01, #06-03, #06-05, #06-08
 (Mirrored)
 #06-02, #06-04, #06-06
 Area 58 Sqm / 624 Sqft



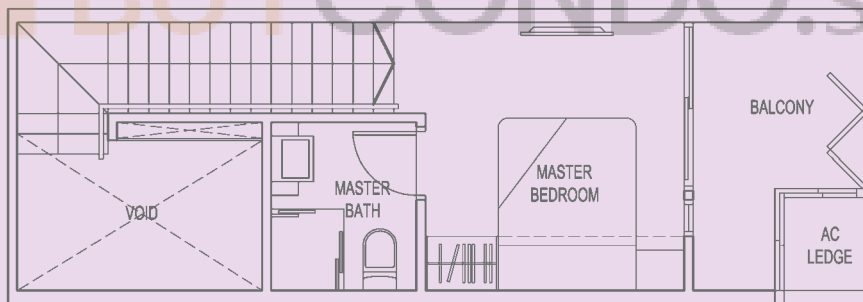
UPPER STOREY



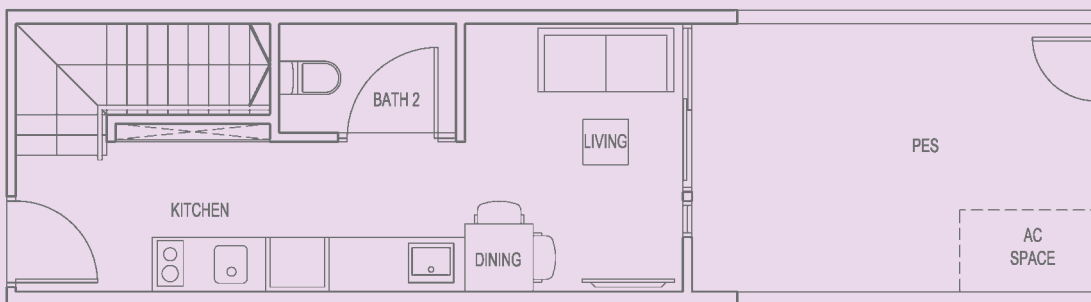
LOWER STOREY

TYPE A6-G (1-Bedroom + 2-Bathroom)

Unit #04-02, #04-04, #04-06
 (Mirrored)
 #04-03, #04-05, #04-08
 Area 66 Sqm / 710 Sqft

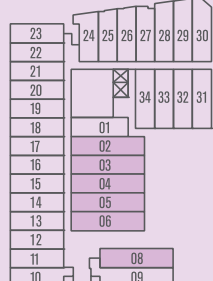


UPPER STOREY

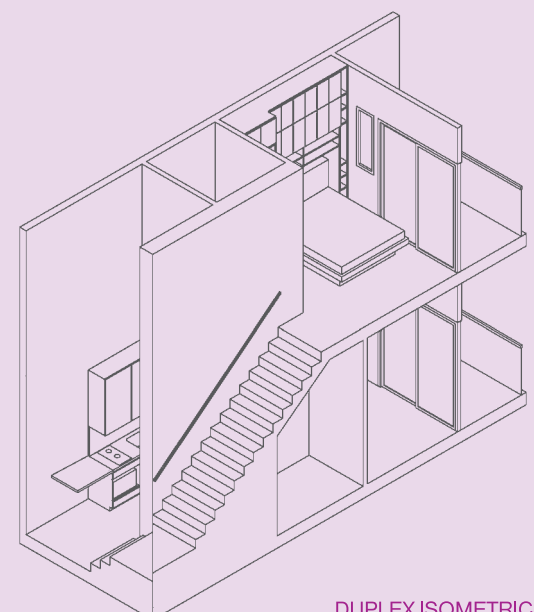
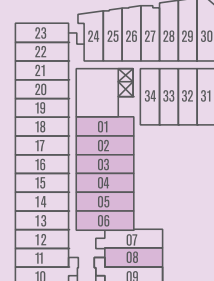


LOWER STOREY

4TH STOREY



6TH STOREY

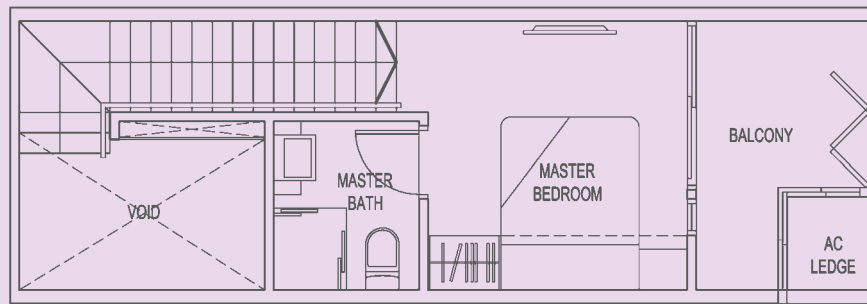


DUPLEX ISOMETRIC

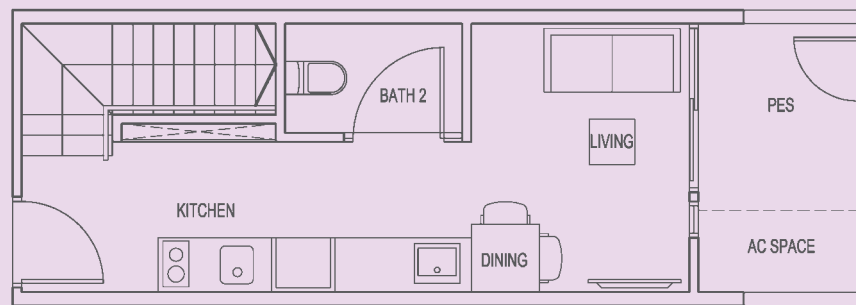
All plans are inclusive of balcony and/or roof terrace and/or a/c ledge and/or strata void area and/or planter, where applicable. All areas subject to final surveyor calculation.
 Building Plan Approval Number: A1404-00357-2012-BP01 Dated 03 January 2013

TYPE A6a-G (1-Bedroom + 2-Bathroom)

Unit #04-01
 Area 57 Sqm / 614 Sqft



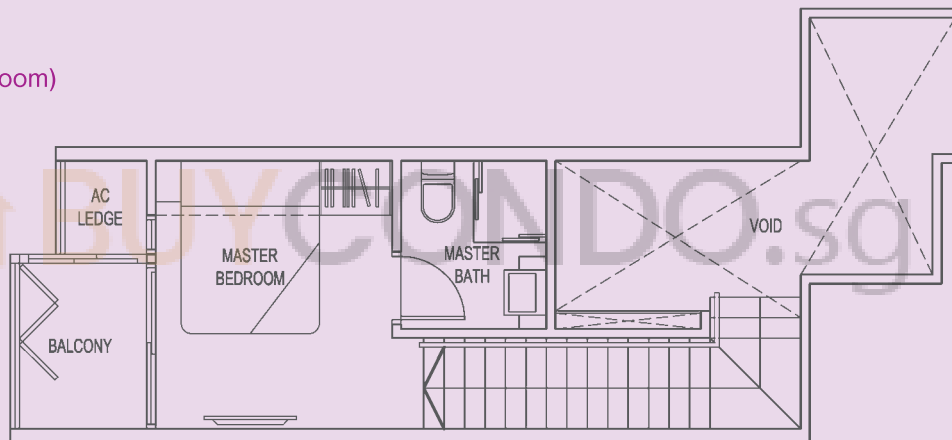
UPPER STOREY



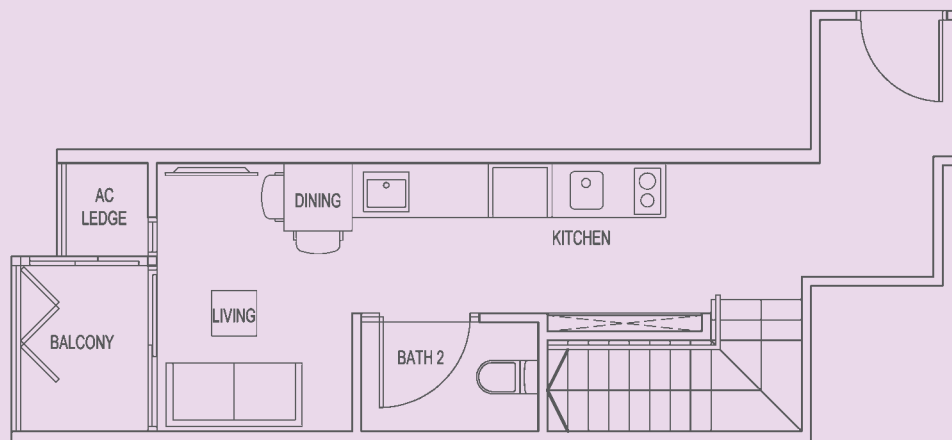
LOWER STOREY

TYPE A7 (1-Bedroom + 2-Bathroom)

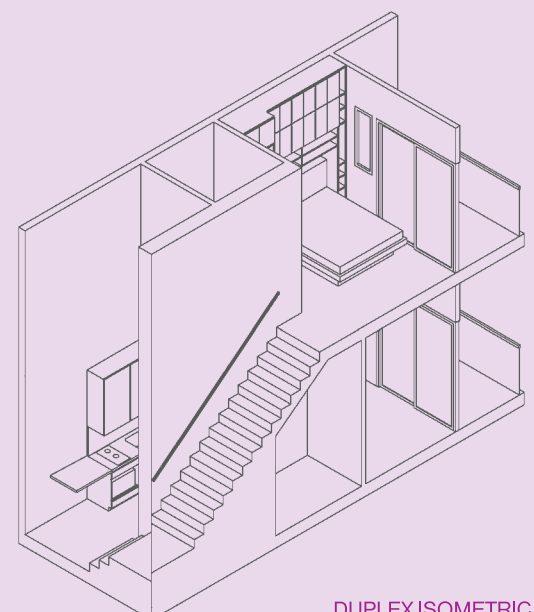
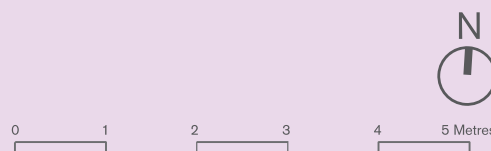
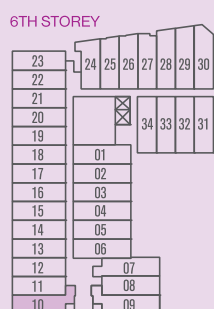
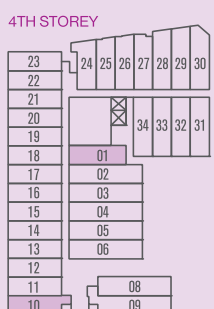
Unit #04-10, #06-10
 Area 62 Sqm / 667 Sqft



UPPER STOREY



LOWER STOREY

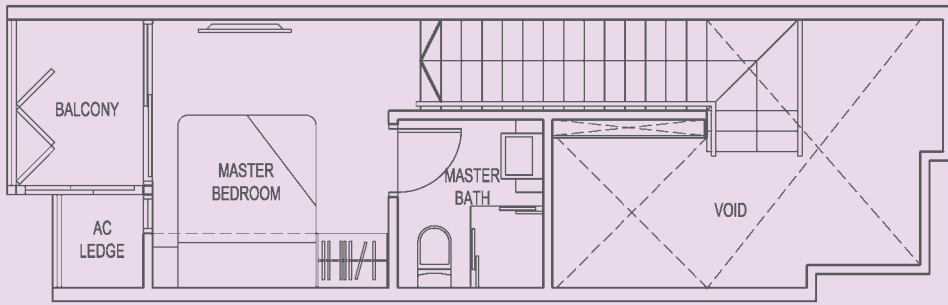


All plans are inclusive of balcony and/or roof terrace and/or a/c ledge and/or strata void area and/or planter, where applicable. All areas subject to final surveyor calculation.
 Building Plan Approval Number: A1404-00357-2012-BP01 Dated 03 January 2013

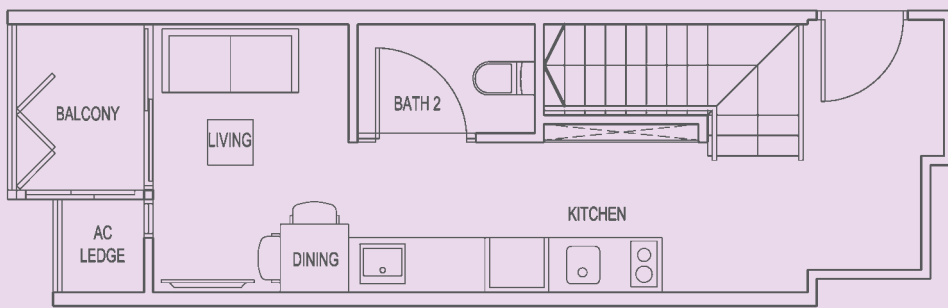
TYPE A8 (1-Bedroom + 2-Bathroom)

Unit #02-17

Area 60 Sqm / 646 Sqft



UPPER STOREY

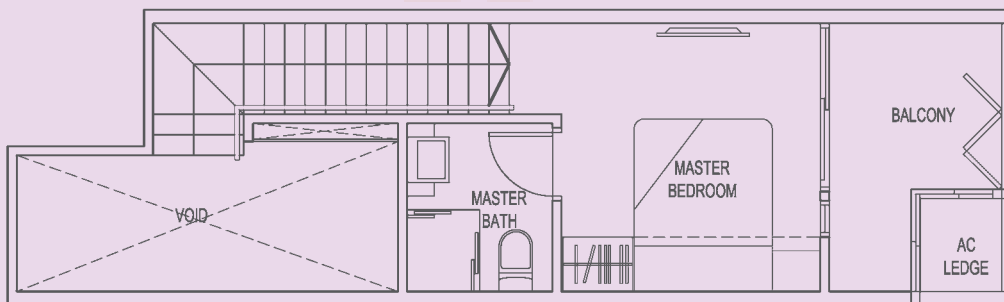


LOWER STOREY

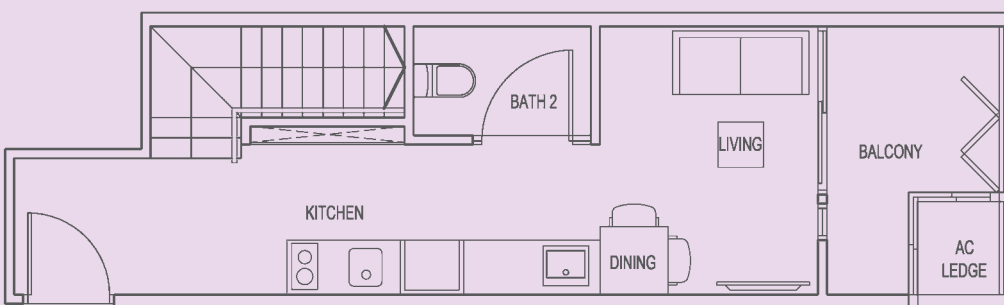
TYPE A9 (1-Bedroom + 2-Bathroom)

Unit #06-07

Area 62 Sqm / 667 Sqft



UPPER STOREY

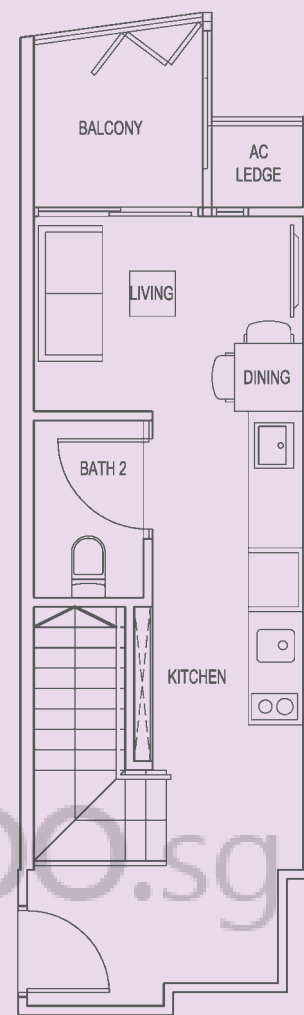


LOWER STOREY

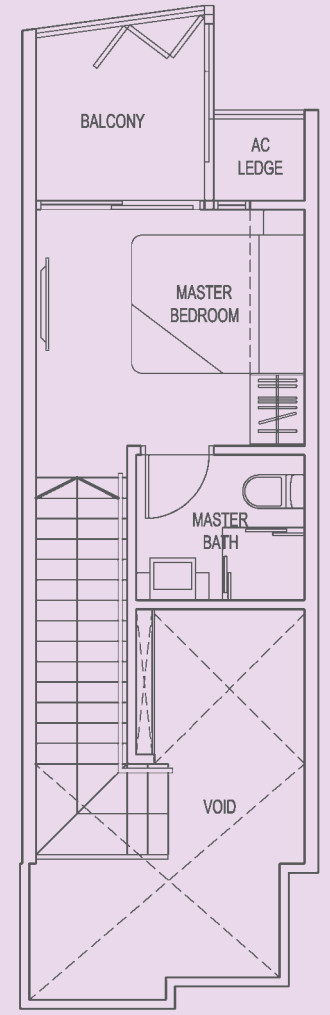
TYPE A8a (1-Bedroom + 2-Bathroom)

Unit #02-27

Area 62 Sqm / 667 Sqft



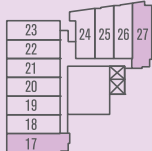
LOWER STOREY



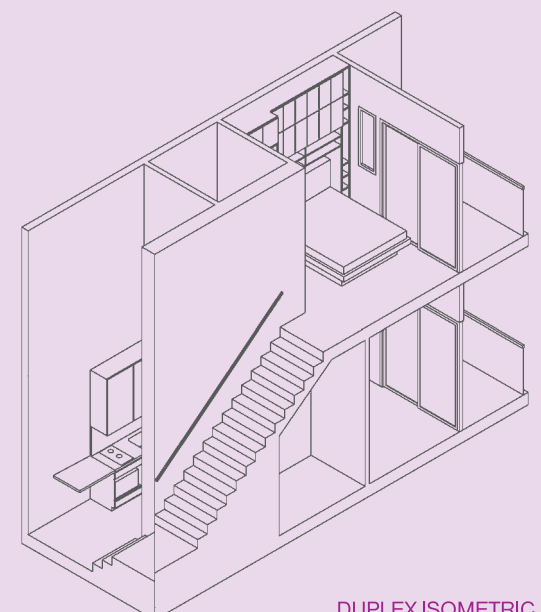
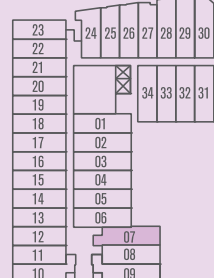
UPPER STOREY



2ND STOREY



6TH STOREY

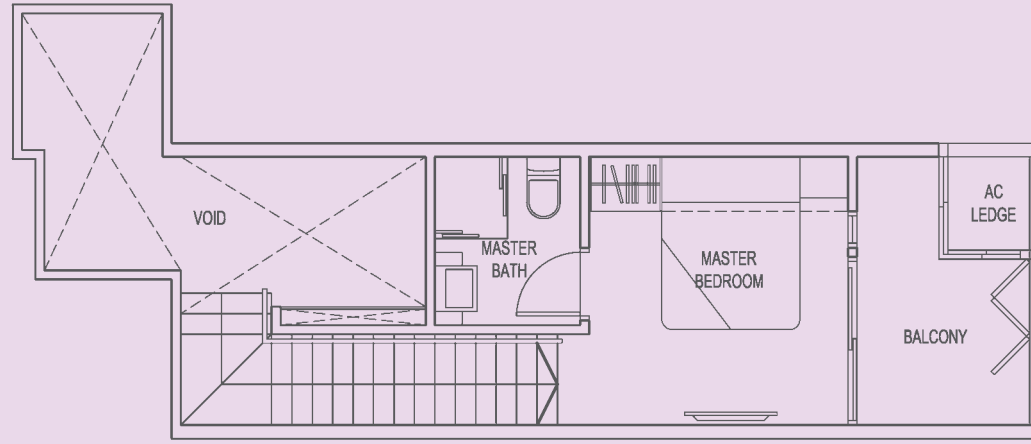


DUPLEX ISOMETRIC

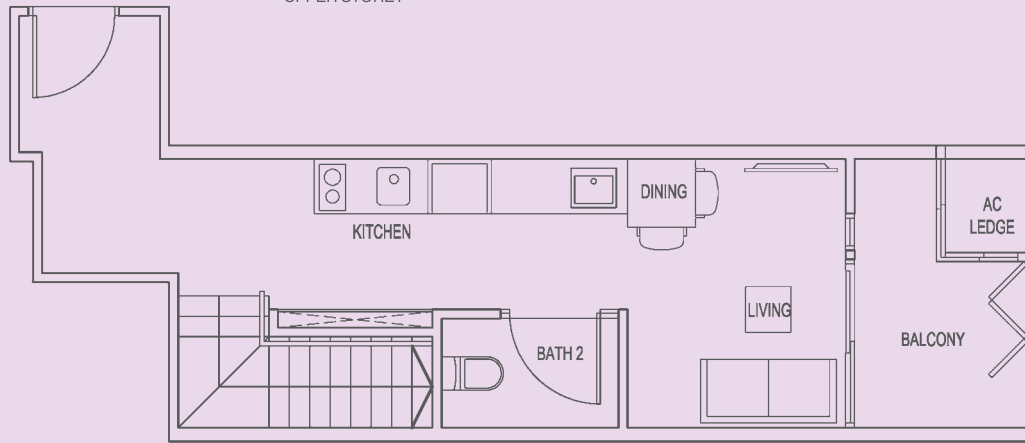
TYPE A10 (1-Bedroom + 2-Bathroom)

Unit #06-09

Area 68 Sqm / 732 Sqft



UPPER STOREY

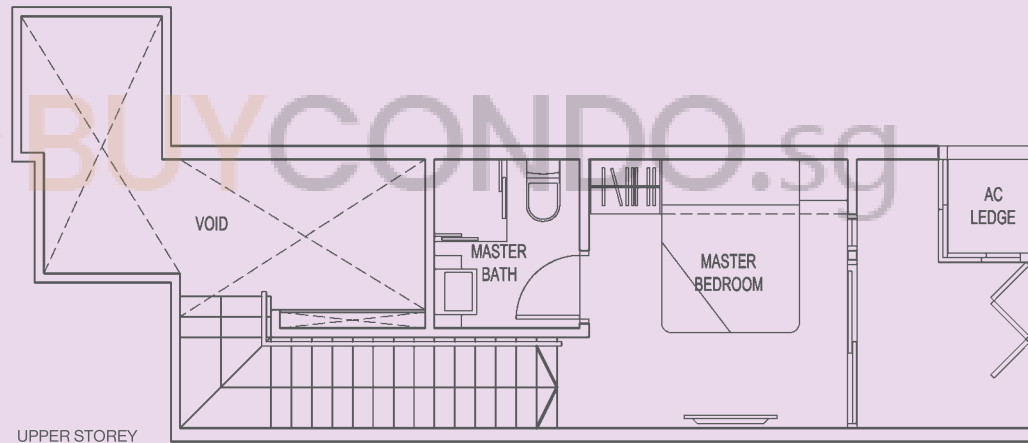


LOWER STOREY

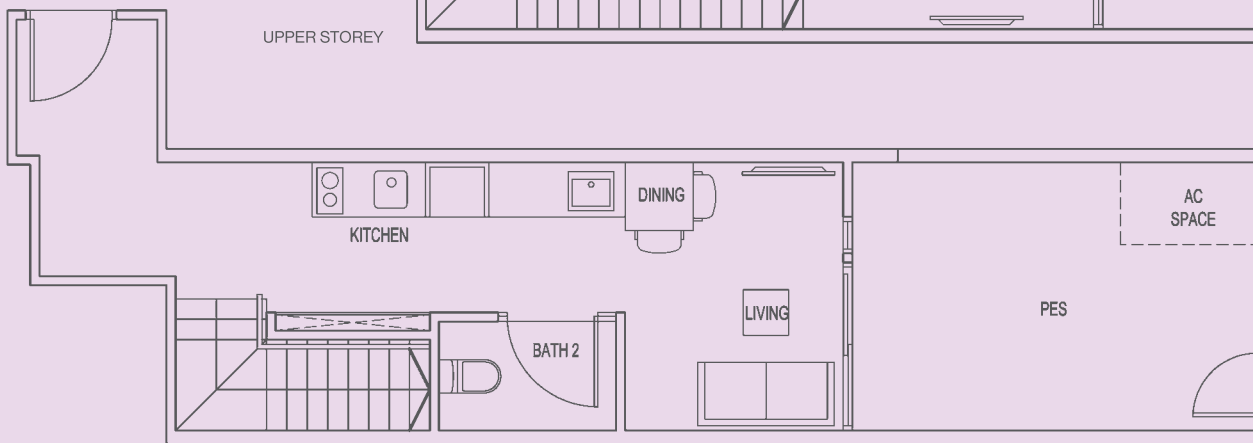
TYPE A10-G (1-Bedroom + 2-Bathroom)

Unit #04-09

Area 76 Sqm / 818 Sqft

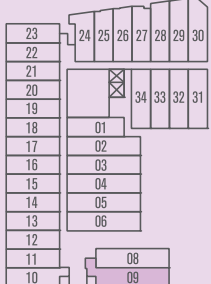


UPPER STOREY

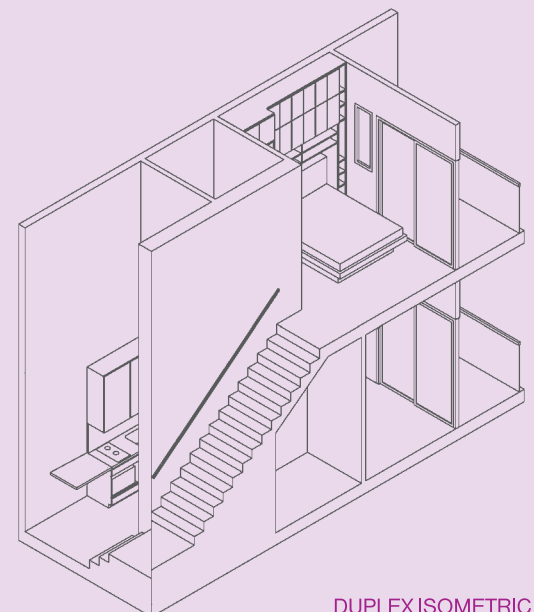
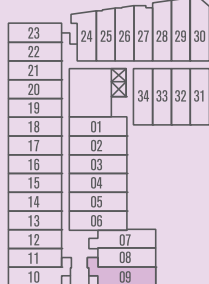


LOWER STOREY

4TH STOREY



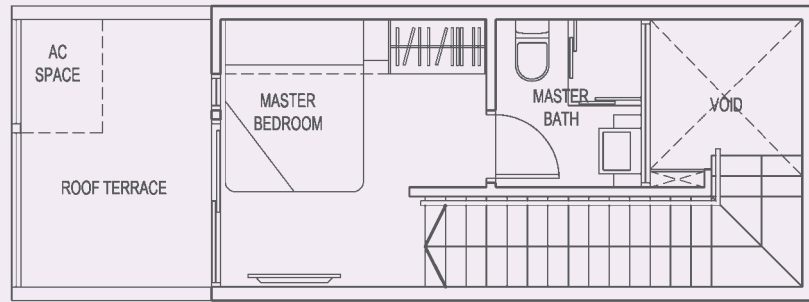
6TH STOREY



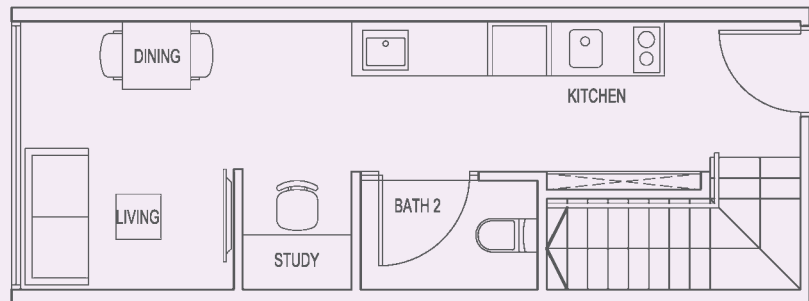
All plans are inclusive of balcony and/or roof terrace and/or a/c ledge and/or strata void area and/or planter, where applicable. All areas subject to final surveyor calculation.
Building Plan Approval Number: A1404-00357-2012-BP01 Dated 03 January 2013

TYPE A1-P (1-Bedroom + Study + 2-Bathroom Penthouse)

Unit #08-11, #08-12, #08-14, #08-16, #08-18, #08-20
 (Mirrored)
 #08-13, #08-15, #08-17, #08-19, #08-21, #08-22, #08-26
 Area 54 Sqm / 581 Sqft



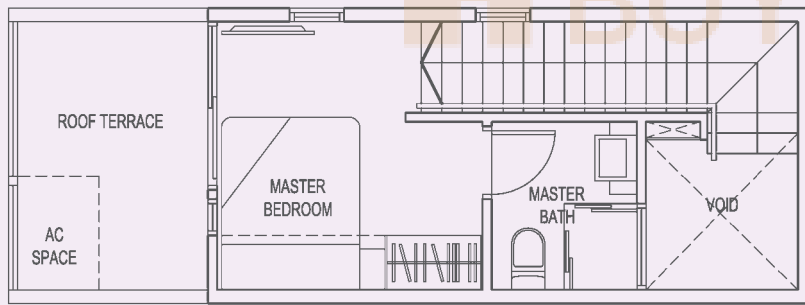
UPPER STOREY



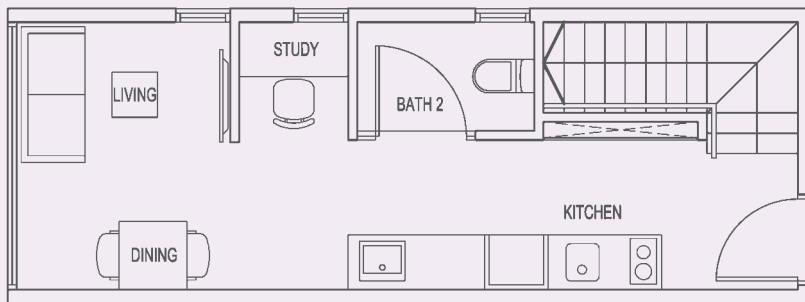
LOWER STOREY

TYPE A1b-P (1-Bedroom + Study + 2-Bathroom Penthouse)

Unit #08-23
 Area 54 Sqm / 581 Sqft

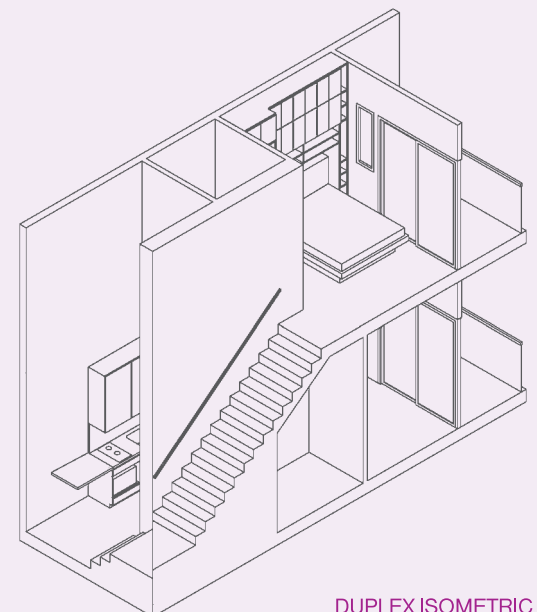
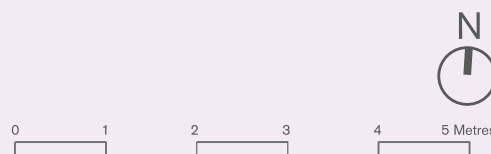
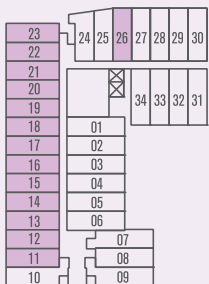


UPPER STOREY



LOWER STOREY

8TH STOREY

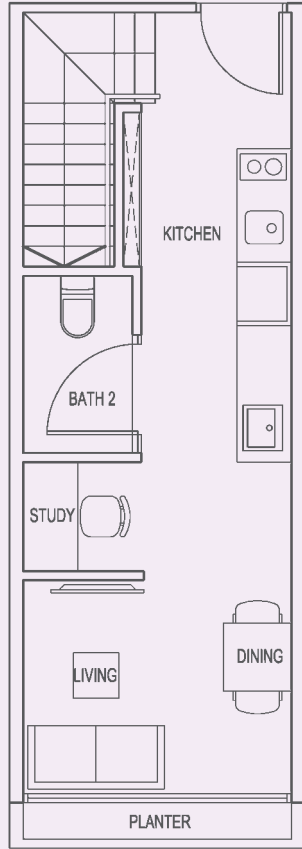


DUPLEX ISOMETRIC

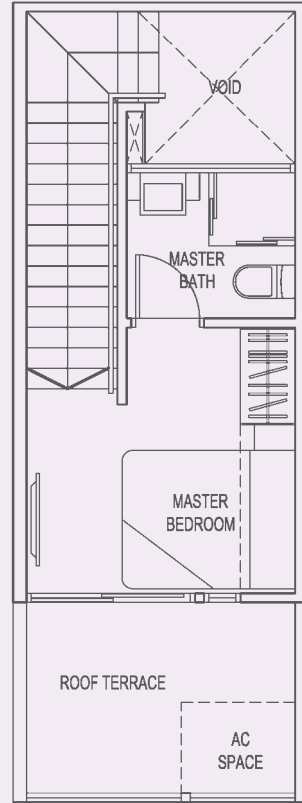
All plans are inclusive of balcony and/or roof terrace and/or a/c ledge and/or strata void area and/or planter, where applicable. All areas subject to final surveyor calculation.
 Building Plan Approval Number: A1404-00357-2012-BP01 Dated 03 January 2013

TYPE A2-P (1-Bedroom + Study + 2-Bathroom Penthouse)

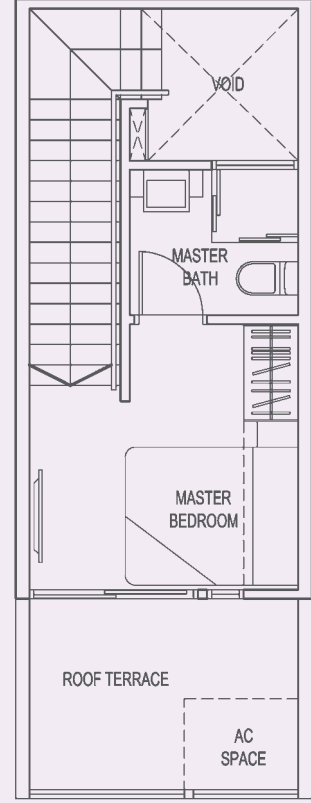
Unit #08-32, #08-34
 (Mirrored)
 #08-33
 Area 55 Sqm / 592 Sqft



LOWER STOREY



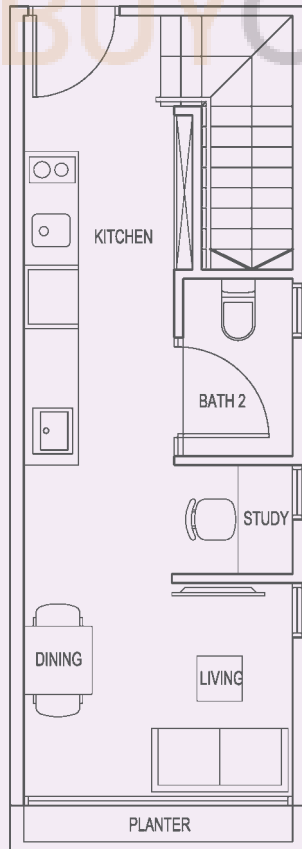
UPPER STOREY



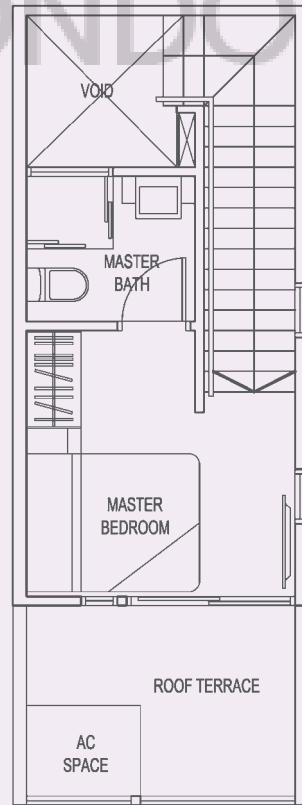
UPPER STOREY (#08-34)

TYPE A2a-P (1-Bedroom + Study + 2-Bathroom Penthouse)

Unit #08-31
 Area 55 Sqm / 592 Sqft

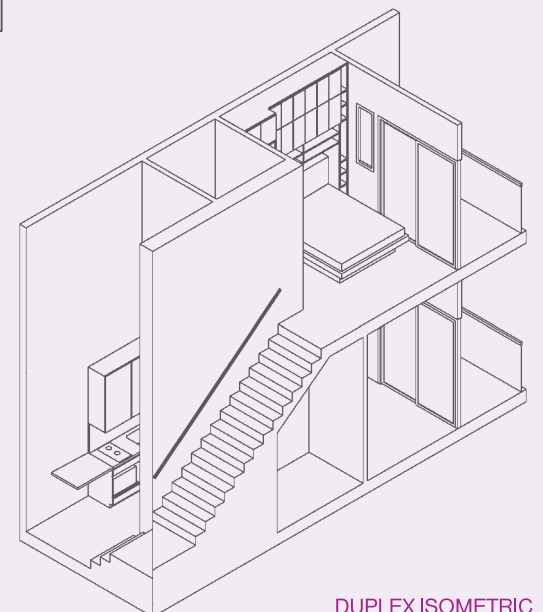
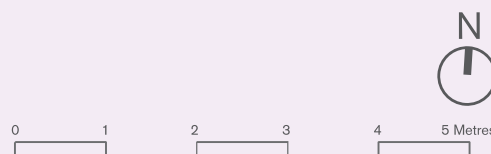
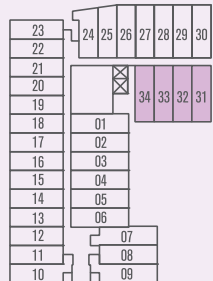


LOWER STOREY



UPPER STOREY

8TH STOREY

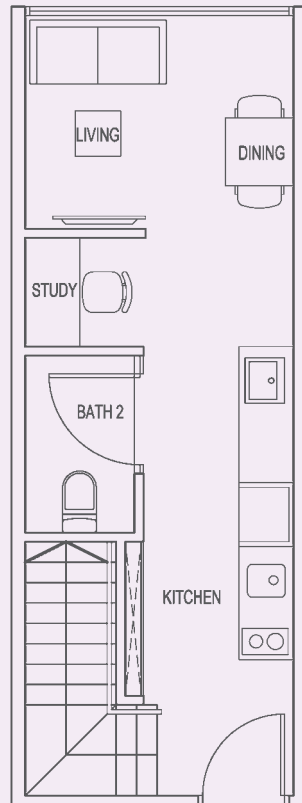


DUPLEX ISOMETRIC

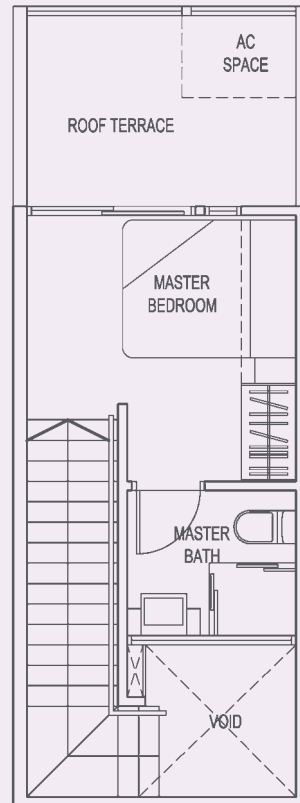
All plans are inclusive of balcony and/or roof terrace and/or a/c ledge and/or strata void area and/or planter, where applicable. All areas subject to final surveyor calculation.
 Building Plan Approval Number: A1404-00357-2012-BP01 Dated 03 January 2013

TYPE A2b-P (1-Bedroom + Study + 2-Bathroom Penthouse)

Unit #08-27, #08-29
 (Mirrored)
 #08-28
 Area 54 Sqm / 581 Sqft



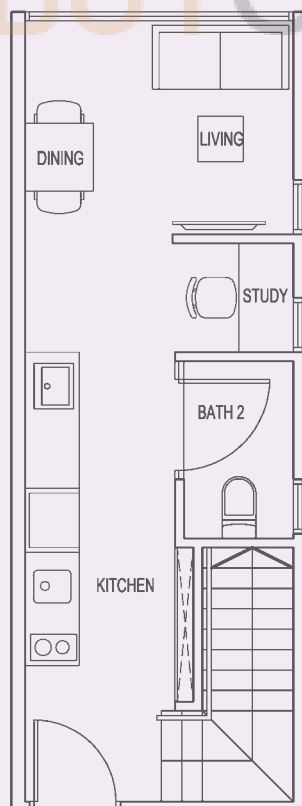
LOWER STOREY



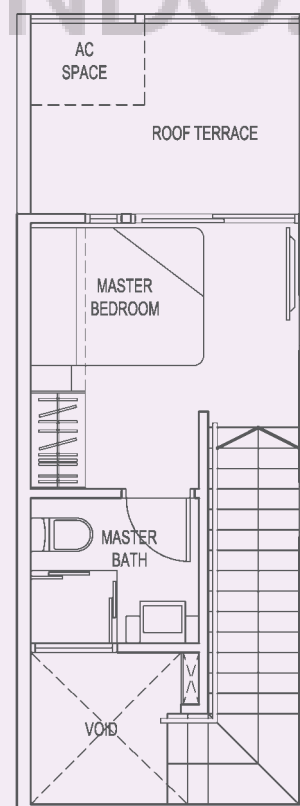
UPPER STOREY

TYPE A2c-P (1-Bedroom + Study + 2-Bathroom Penthouse)

Unit #08-30
 Area 54 Sqm / 581 Sqft

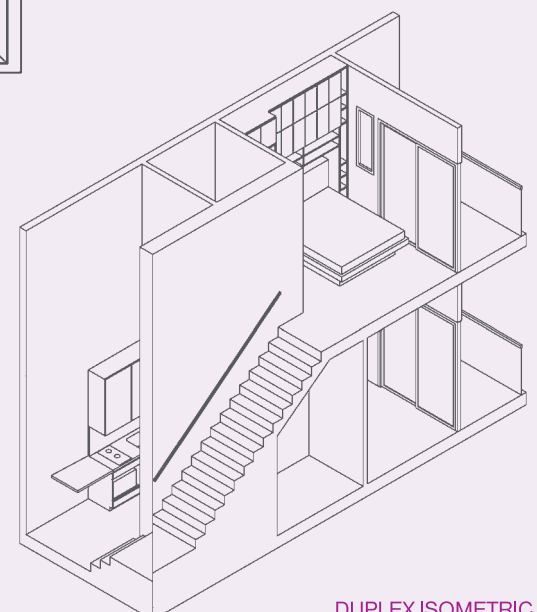
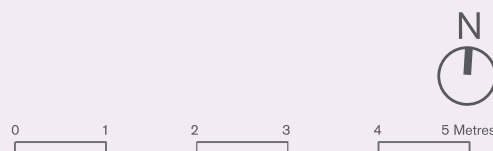
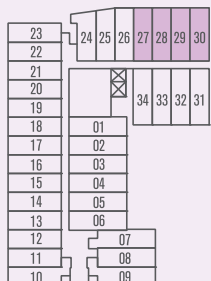


LOWER STOREY



UPPER STOREY

8TH STOREY



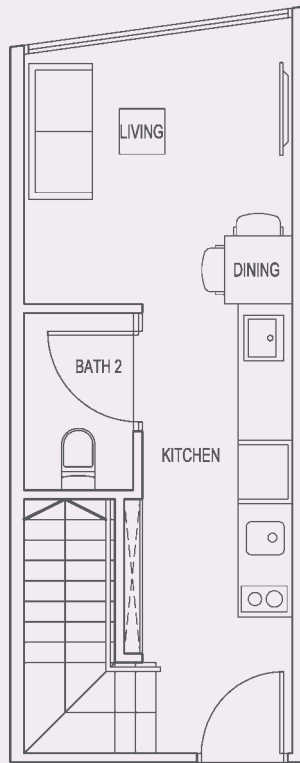
DUPLEX ISOMETRIC

All plans are inclusive of balcony and/or roof terrace and/or a/c ledge and/or strata void area and/or planter, where applicable. All areas subject to final surveyor calculation.
 Building Plan Approval Number: A1404-00357-2012-BP01 Dated 03 January 2013

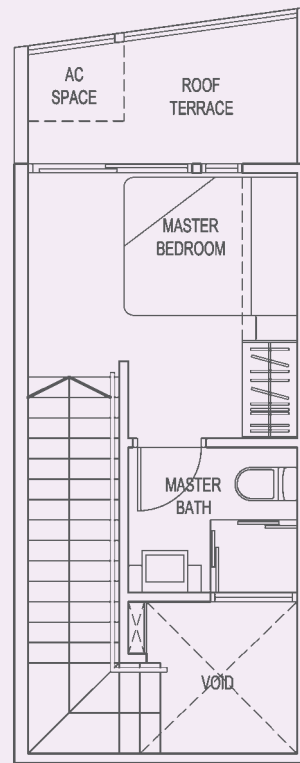
TYPE A4-P (1-Bedroom + 2-Bathroom Penthouse)

Unit #08-24

Area 50 Sqm / 538 Sqft



LOWER STOREY

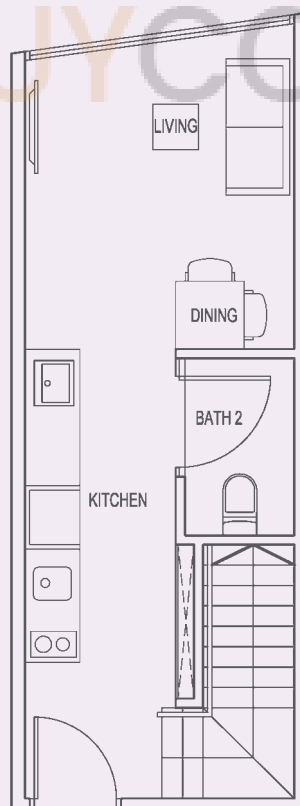


UPPER STOREY

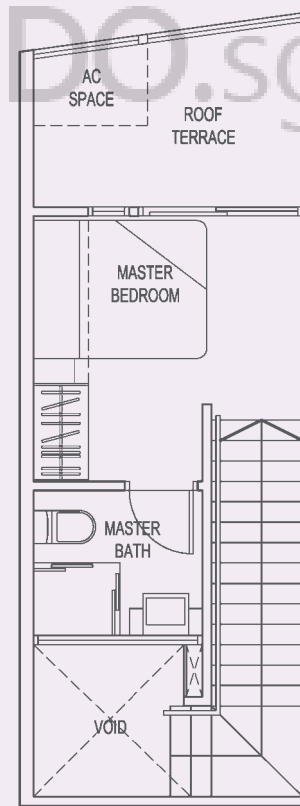
TYPE A5-P (1-Bedroom + 2-Bathroom Penthouse)

Unit #08-25

Area 52 Sqm / 560 Sqft

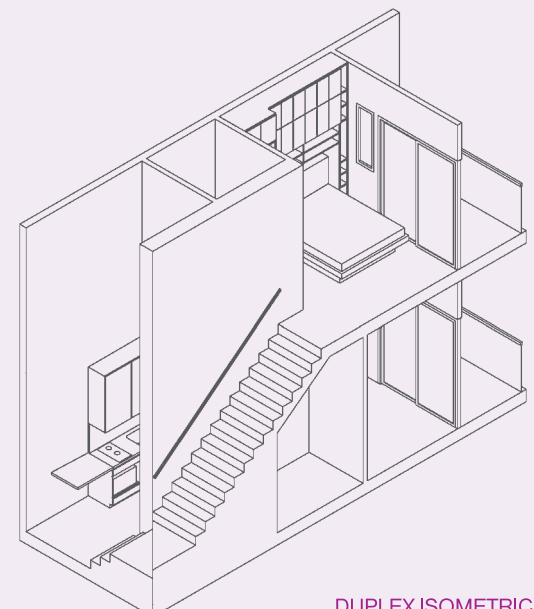
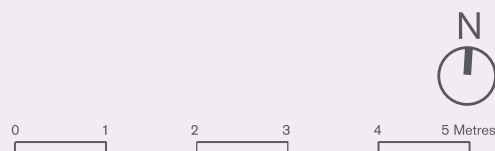
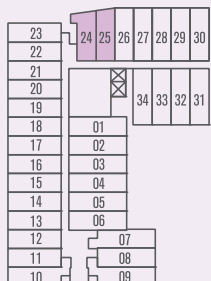


LOWER STOREY



UPPER STOREY

8TH STOREY

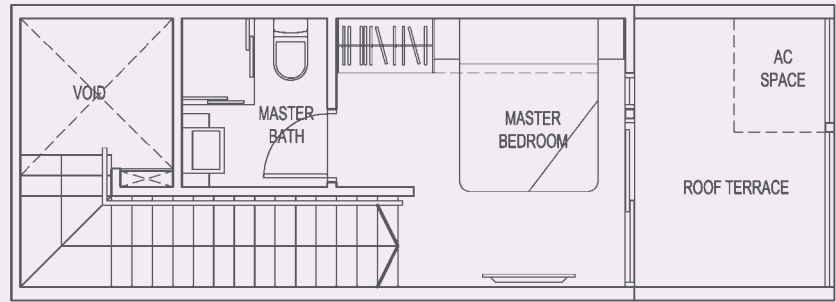


DUPLEX ISOMETRIC

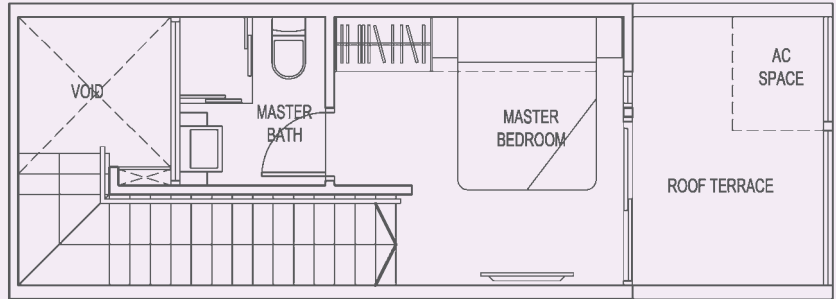
All plans are inclusive of balcony and/or roof terrace and/or a/c ledge and/or strata void area and/or planter, where applicable. All areas subject to final surveyor calculation.
 Building Plan Approval Number: A1404-00357-2012-BP01 Dated 03 January 2013

TYPE A6-P (1-Bedroom + Study + 2-Bathroom Penthouse)

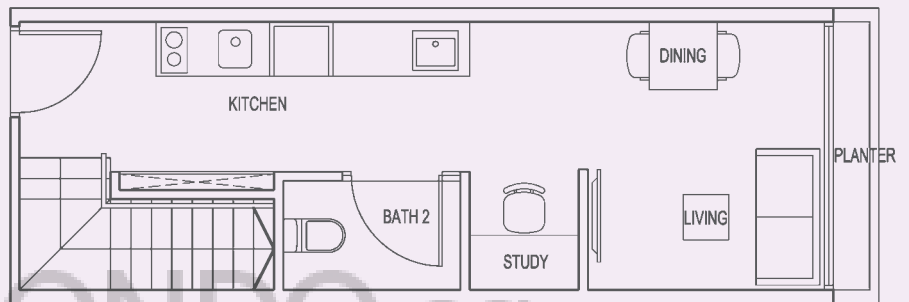
Unit #08-01, #08-03, #08-05, #08-08
 (Mirrored)
 #08-02, #08-04, #08-06
 Area 57 Sqm / 614 Sqft



UPPER STOREY (#08-01, #08-06)



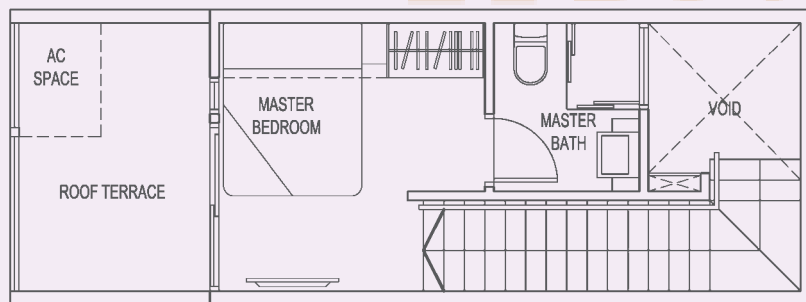
UPPER STOREY



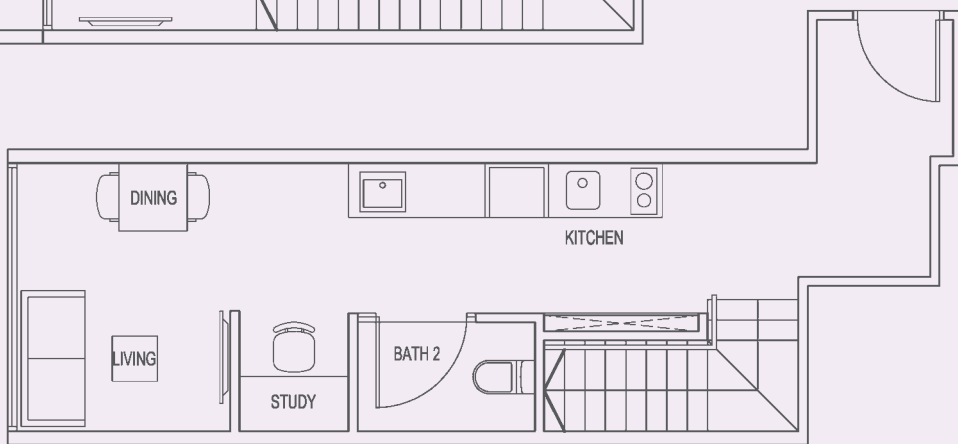
LOWER STOREY

TYPE A7-P (1-Bedroom + Study + 2-Bathroom Penthouse)

Unit #08-10
 Area 58 Sqm / 624 Sqft

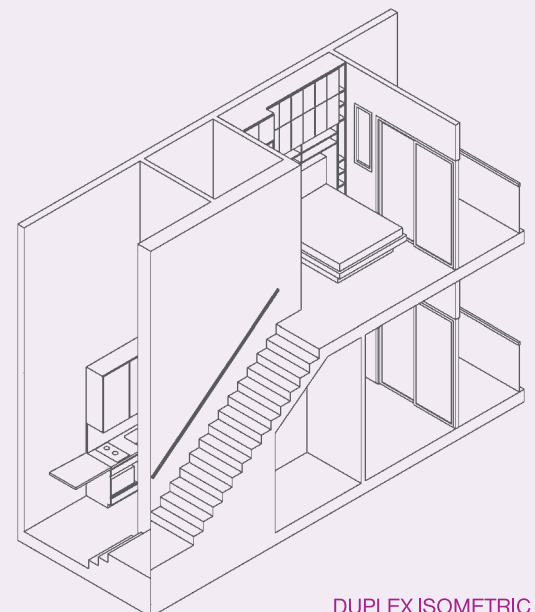
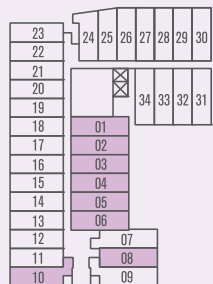


UPPER STOREY



LOWER STOREY

8TH STOREY



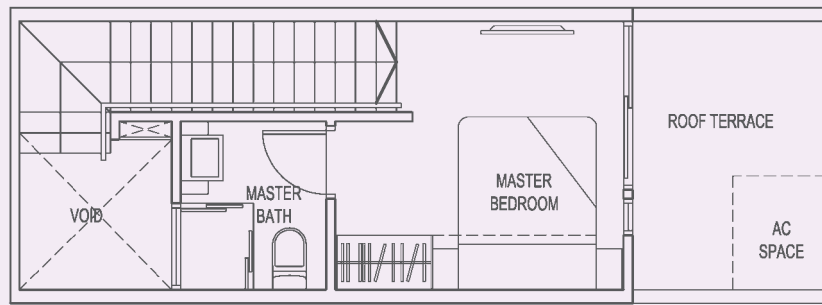
DUPLEX ISOMETRIC

All plans are inclusive of balcony and/or roof terrace and/or a/c ledge and/or strata void area and/or planter, where applicable. All areas subject to final surveyor calculation.
 Building Plan Approval Number: A1404-00357-2012-BP01 Dated 03 January 2013

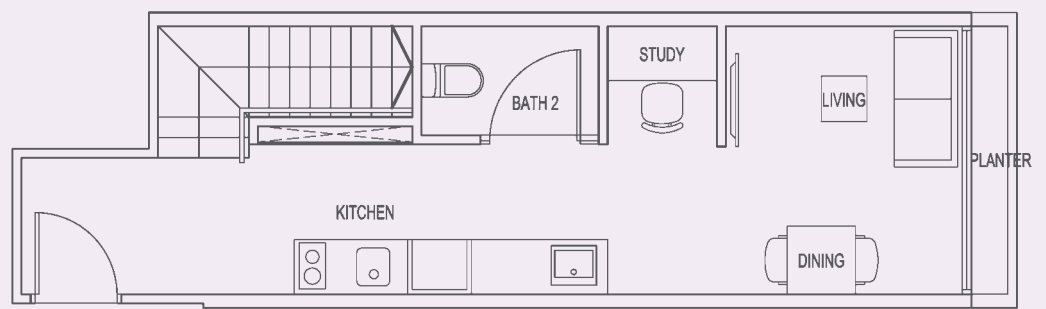
TYPE A9-P (1-Bedroom + Study + 2-Bathroom Penthouse)

Unit #08-07

Area 59 Sqm / 635 Sqft



UPPER STOREY

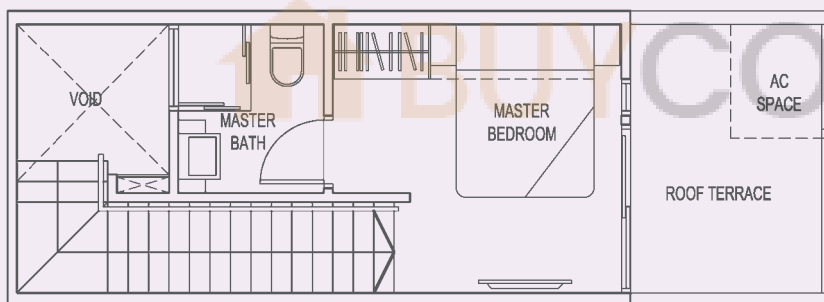


LOWER STOREY

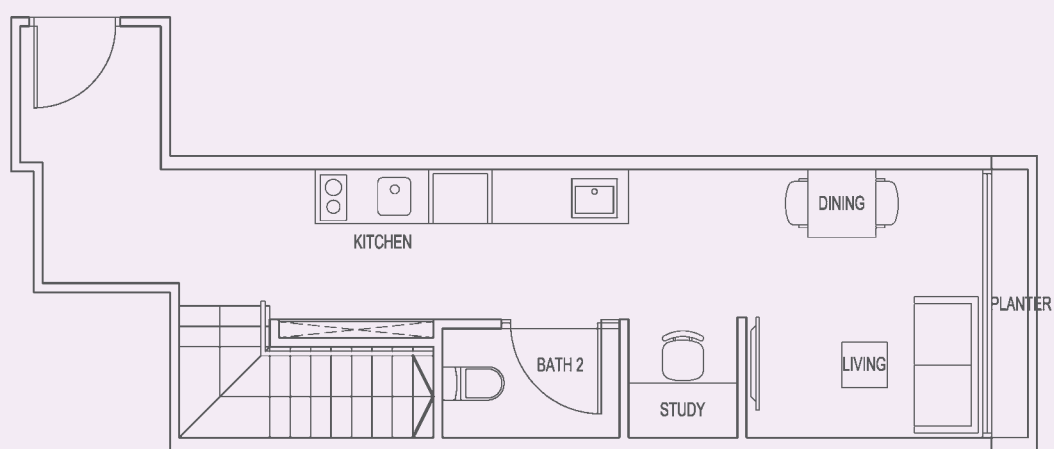
TYPE A10-P (1-Bedroom + Study + 2-Bathroom Penthouse)

Unit #08-09

Area 62 Sqm / 667 Sqft

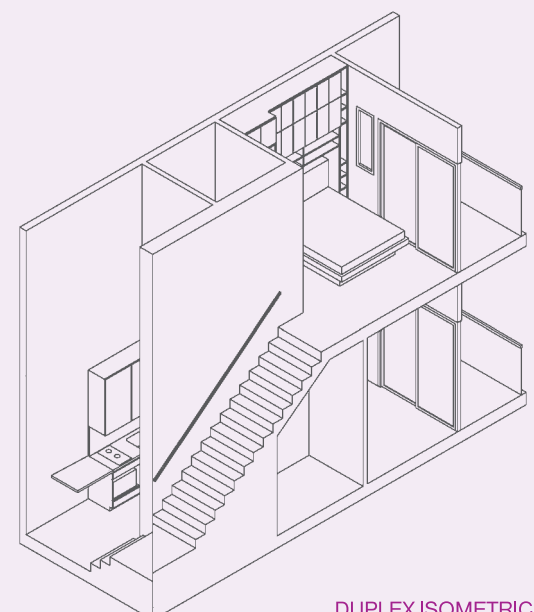
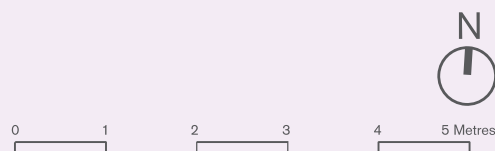
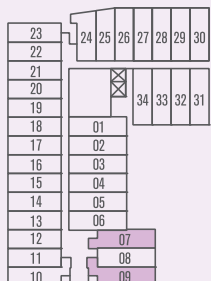


UPPER STOREY



LOWER STOREY

8TH STOREY



DUPLEX ISOMETRIC

All plans are inclusive of balcony and/or roof terrace and/or a/c ledge and/or strata void area and/or planter, where applicable. All areas subject to final surveyor calculation.
Building Plan Approval Number: A1404-00357-2012-BP01 Dated 03 January 2013