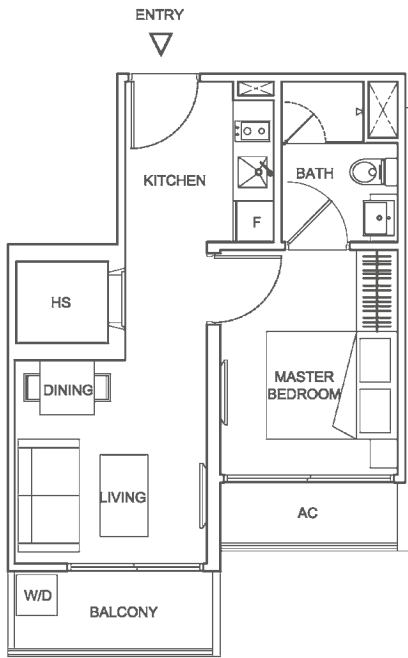


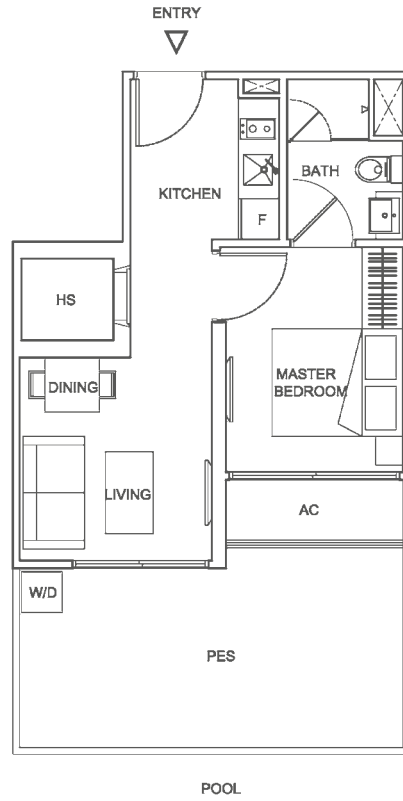
TYPE A (1 BEDROOM)

Unit #02-09 to #04-09
 #02-16 to #04-16 (mirror)
 Area 431 sqft / 40 sqm



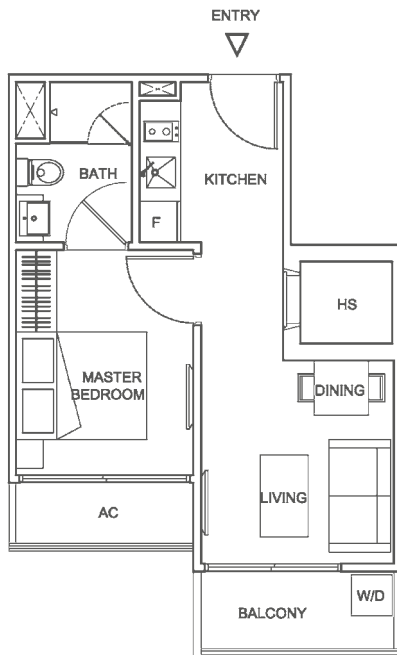
TYPE A1 (1 BEDROOM)

Unit #01-09
 Area 570 sqft / 53 sqm



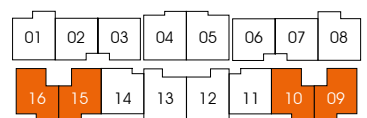
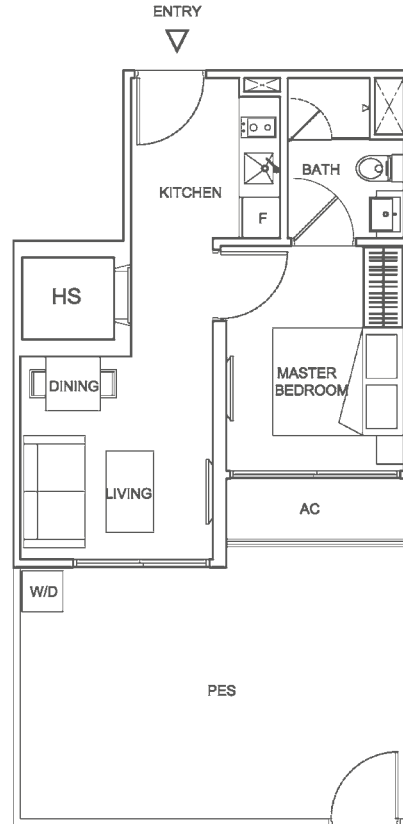
TYPE B (1 BEDROOM)

Unit #02-10 to #04-10
 #02-15 to #04-15 (mirror)
 Area 431 sqft / 40 sqm



TYPE B1 (1 BEDROOM)

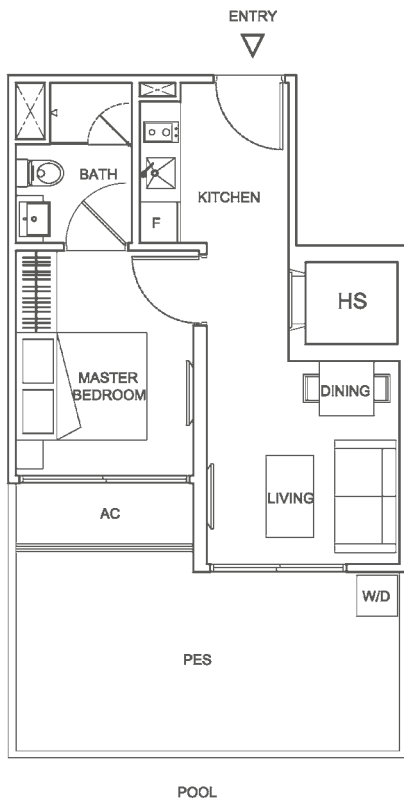
Unit #01-15
 Area 624 sqft / 58 sqm



All areas are inclusive of a/c ledge, balcony, open balcony, PES, private roof garden, planter, void, if any.
 All plans are subject to amendment as approved by the relevant authorities. Floor areas are approximate measurements and subject to final survey.

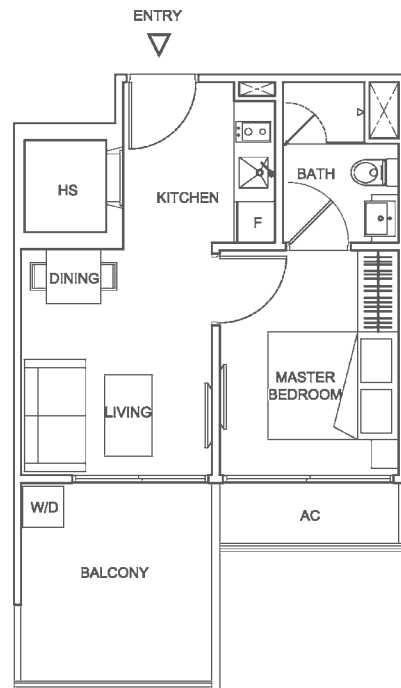
TYPE B2 (1 BEDROOM)

Unit #01-10
 Area 560 sqft / 52 sqm



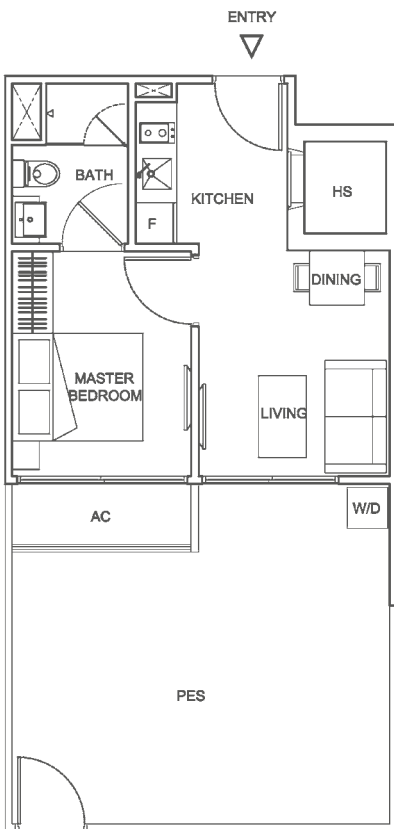
TYPE C (1 BEDROOM)

Unit #02-11 to #04-11
 #02-14 to #04-14 (mirror)
 Area 474 sqft / 44 sqm



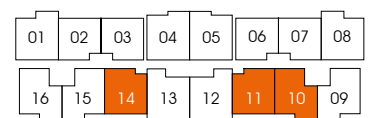
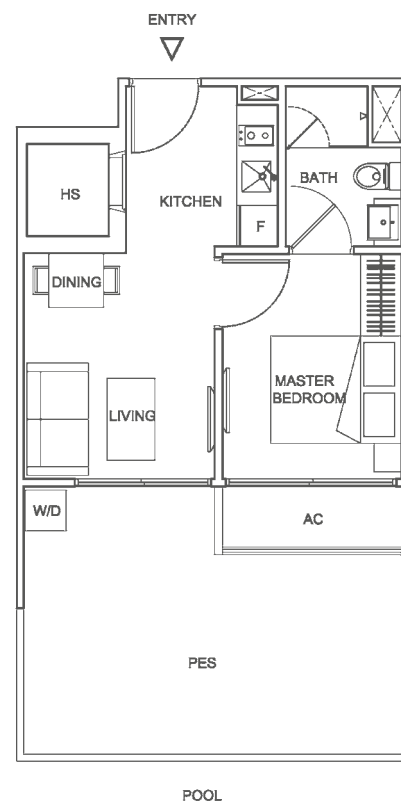
TYPE C1 (1 BEDROOM)

Unit #01-14
 Area 657 sqft / 61 sqm



TYPE C2 (1 BEDROOM)

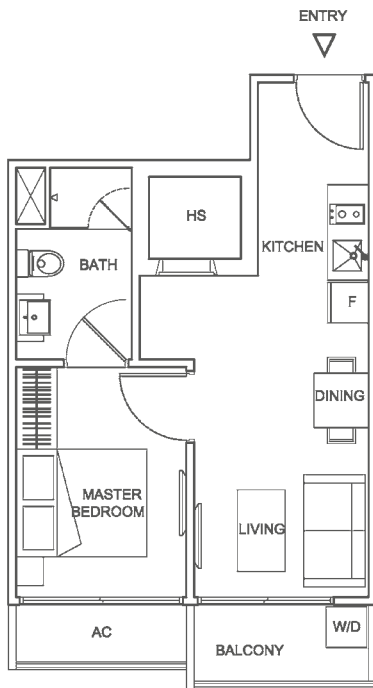
Unit #01-11
 Area 592 sqft / 55 sqm



All areas are inclusive of a/c ledge, balcony, open balcony, PES, private roof garden, planter, void, if any. All plans are subject to amendment as approved by the relevant authorities. Floor areas are approximate measurements and subject to final survey.

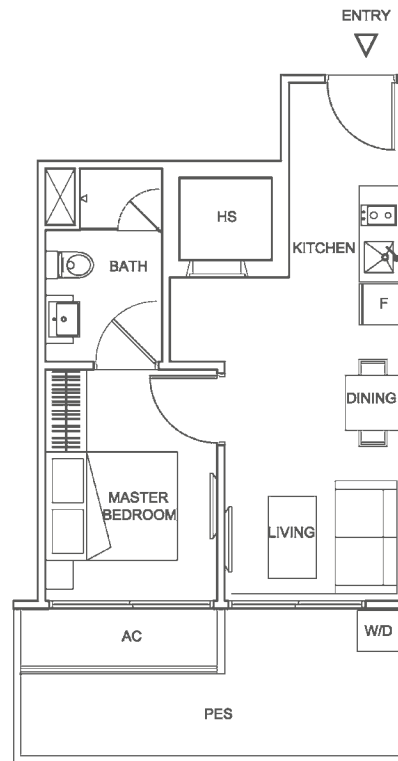
TYPE D (1 BEDROOM)

Unit #02-12 to #04-12
 #02-13 to #04-13 (mirror)
 Area 452 sqft / 42 sqm



TYPE D1 (1 BEDROOM)

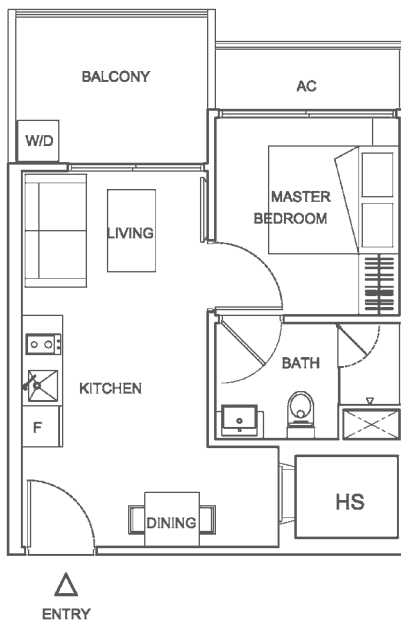
Unit #01-12
 Area 527 sqft / 49 sqm



POOL

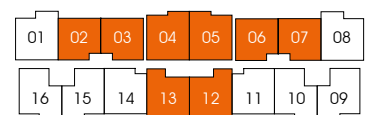
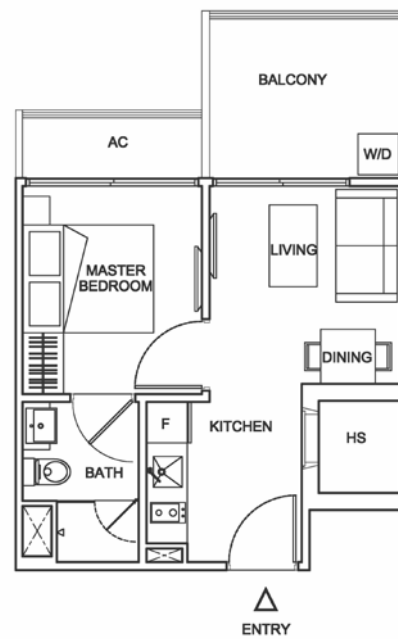
TYPE E (1 BEDROOM)

Unit #01-04 to #03-04
 #01-05 to #03-05 (mirror)
 Area 474 sqft / 44 sqm



TYPE F (1 BEDROOM)

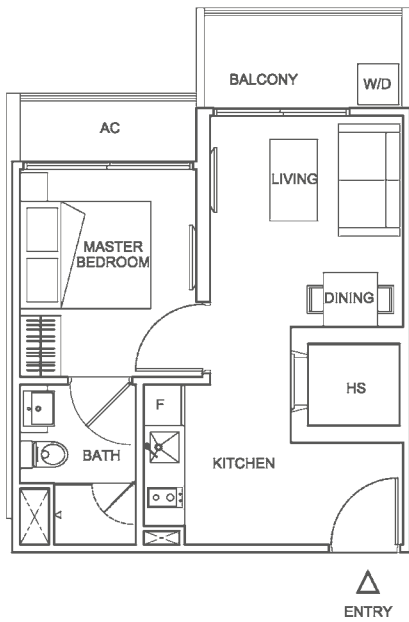
Unit #01-02 to #03-02
 #01-03 to #03-03 (mirror)
 #01-06 to #03-06
 #01-07 to #03-07 (mirror)
 Area 431 sqft / 40 sqm



All areas are inclusive of a/c ledge, balcony, open balcony, PES, private roof garden, planter, void, if any.
 All plans are subject to amendment as approved by the relevant authorities. Floor areas are approximate measurements and subject to final survey.

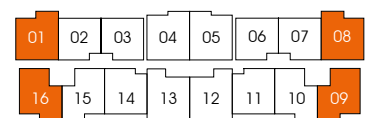
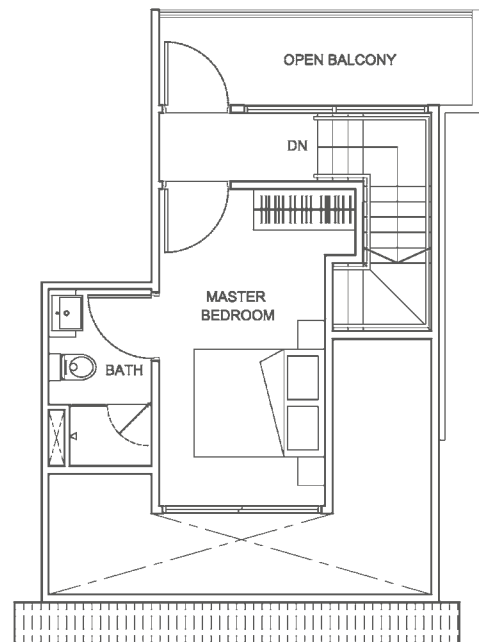
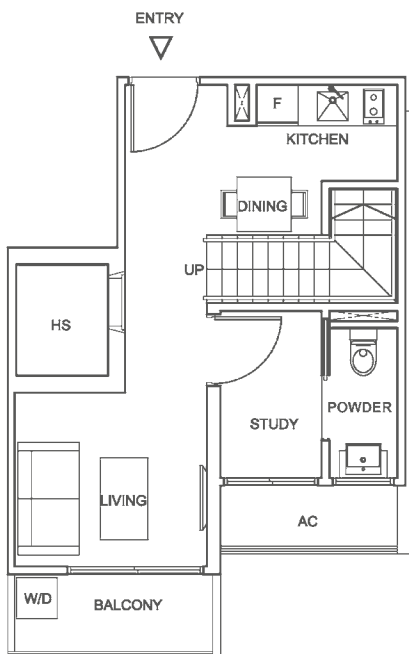
TYPE G (1 BEDROOM)

Unit #02-01 to #03-01
 #01-08 to #03-08 (mirror)
 Area 452 sqft / 42 sqm



TYPE PH-A

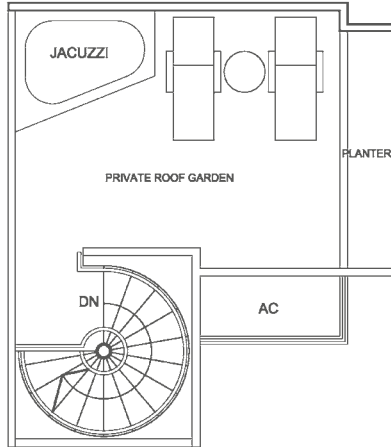
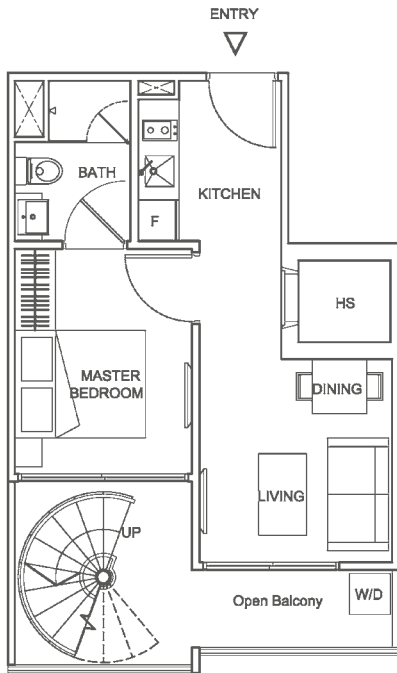
Unit #05-09
 #05-16 (mirror)
 Area 861 sqft / 80 sqm



All areas are inclusive of a/c ledge, balcony, open balcony, PES, private roof garden, planter, void, if any.
 All plans are subject to amendment as approved by the relevant authorities. Floor areas are approximate measurements and subject to final survey.

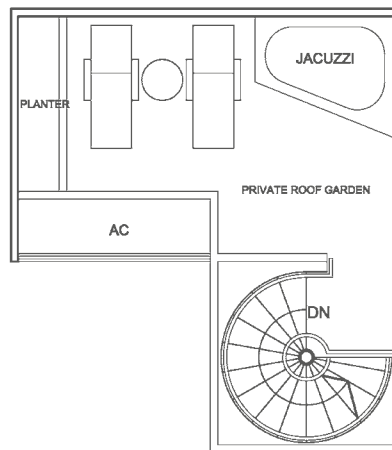
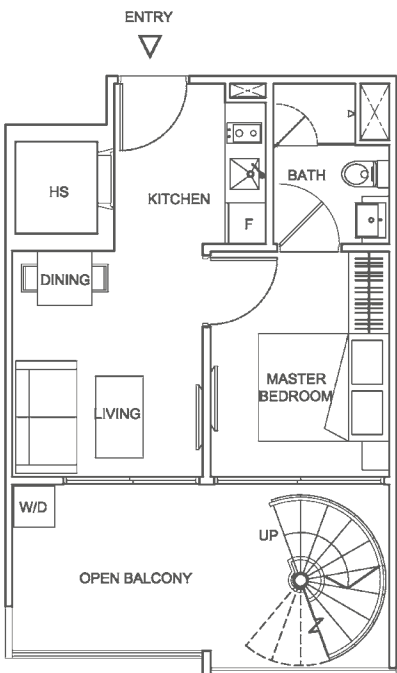
TYPE PH-B (1 BEDROOM PENTHOUSE)

Unit #05-10
 #05-15 (mirror)
 Area 797 sqft / 74 sqm



TYPE PH-C

Unit #05-11
 #05-14 (mirror)
 Area 818 sqft / 76 sqm

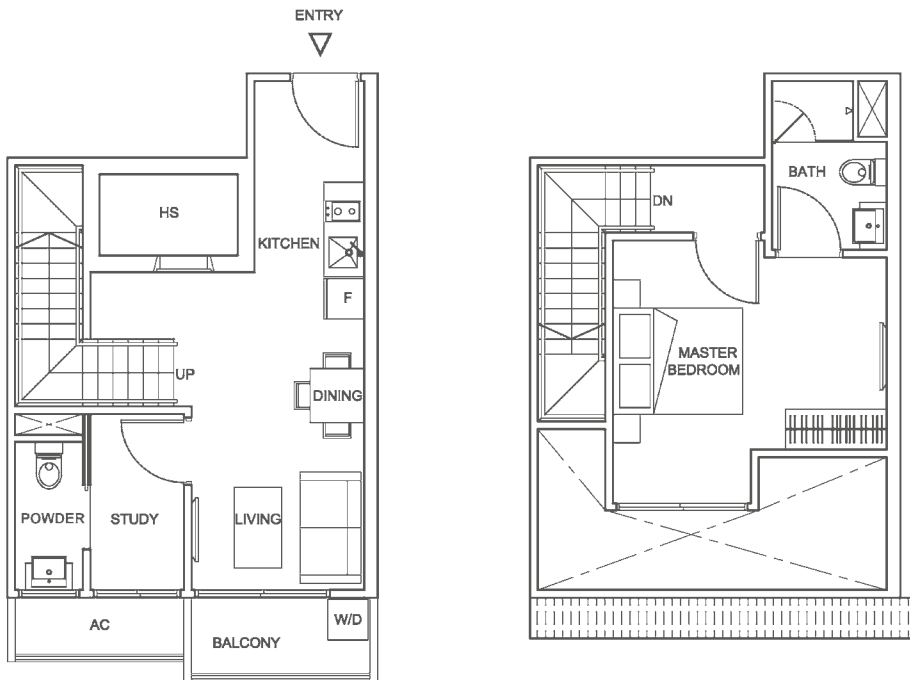


01	02	03	04	05	06	07	08
16	15	14	13	12	11	10	09

All areas are inclusive of a/c ledge, balcony, open balcony, PES, private roof garden, planter, void, if any.
 All plans are subject to amendment as approved by the relevant authorities. Floor areas are approximate measurements and subject to final survey.

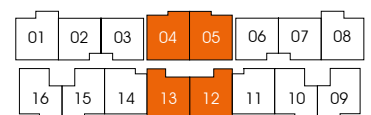
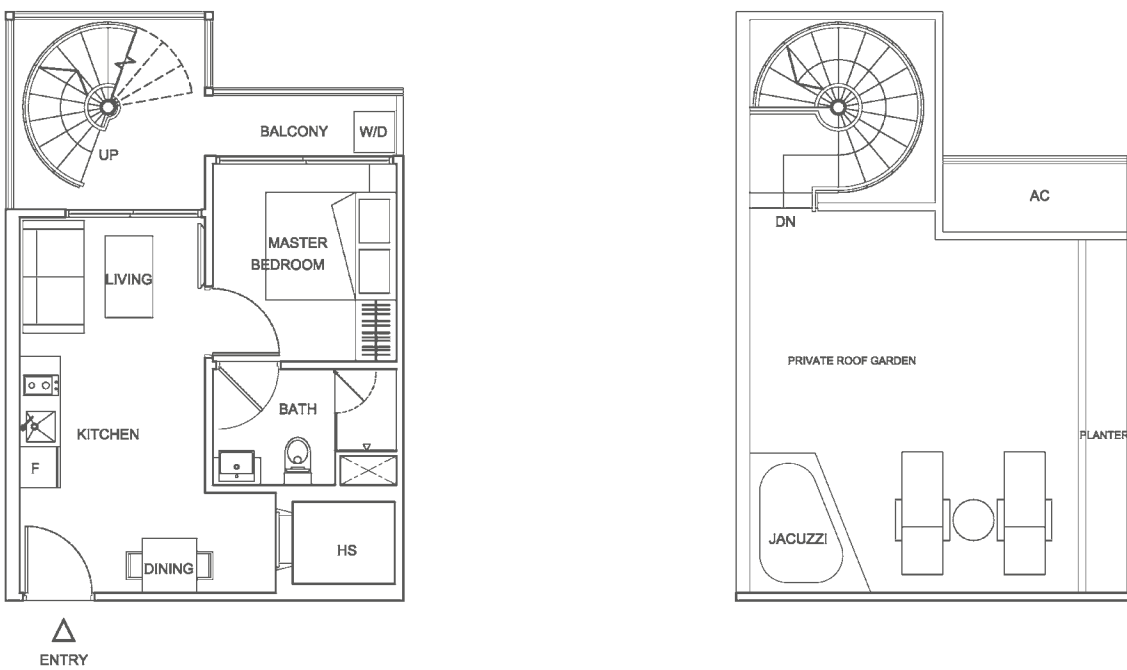
TYPE PH-D (1+1 BEDROOM PENTHOUSE)

Unit #05-12
 #05-13 (mirror)
 Area 840 sqft / 78 sqm



TYPE PH-E (1 BEDROOM PENTHOUSE)

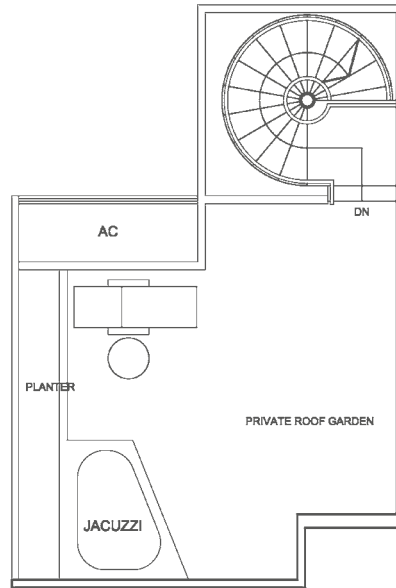
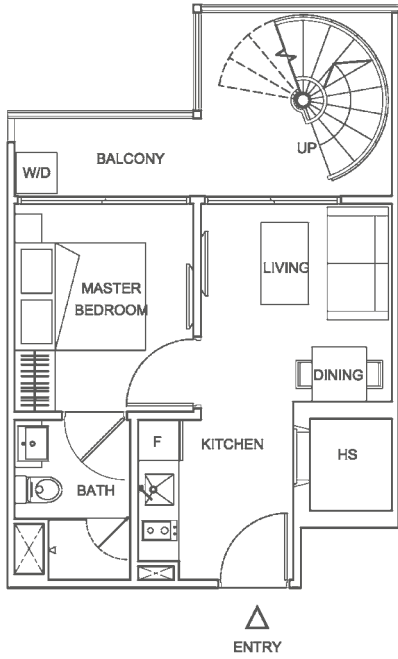
Unit #04-04
 #04-05 (mirror)
 Area 947 sqft / 88 sqm



All areas are inclusive of a/c ledge, balcony, open balcony, PES, private roof garden, planter, void, if any.
 All plans are subject to amendment as approved by the relevant authorities. Floor areas are approximate measurements and subject to final survey.

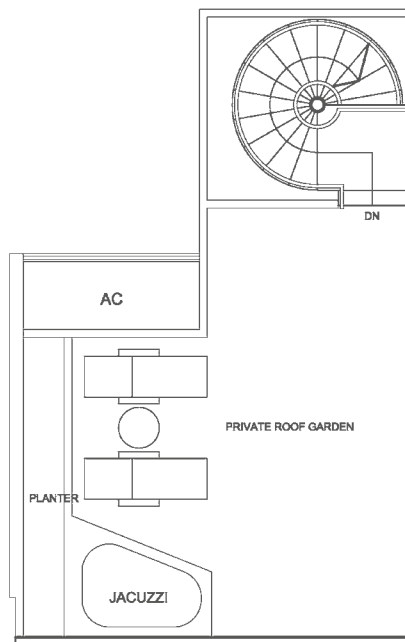
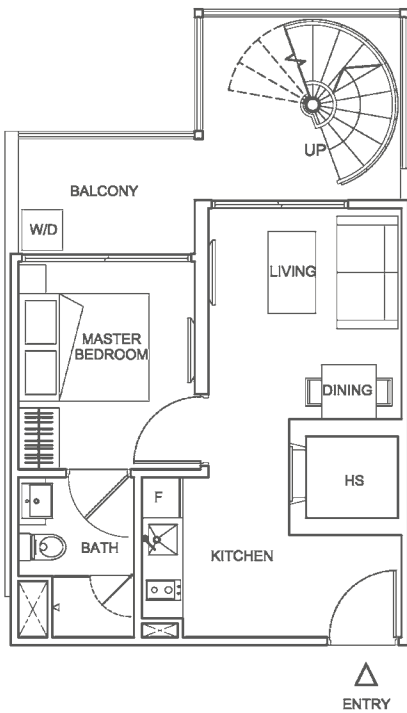
TYPE PH-F (1 BEDROOM PENTHOUSE)

Unit #04-02
 #04-03 (mirror)
 #04-06
 #04-07 (mirror)
 Area 872 sqft / 81 sqm



TYPE PH-G 

Unit #04-01
 #04-08 (mirror)
 Area 980 sqft / 91 sqm



01	02	03	04	05	06	07	08
16	15	14	13	12	11	10	09

All areas are inclusive of a/c ledge, balcony, open balcony, PES, private roof garden, planter, void, if any.
 All plans are subject to amendment as approved by the relevant authorities. Floor areas are approximate measurements and subject to final survey.