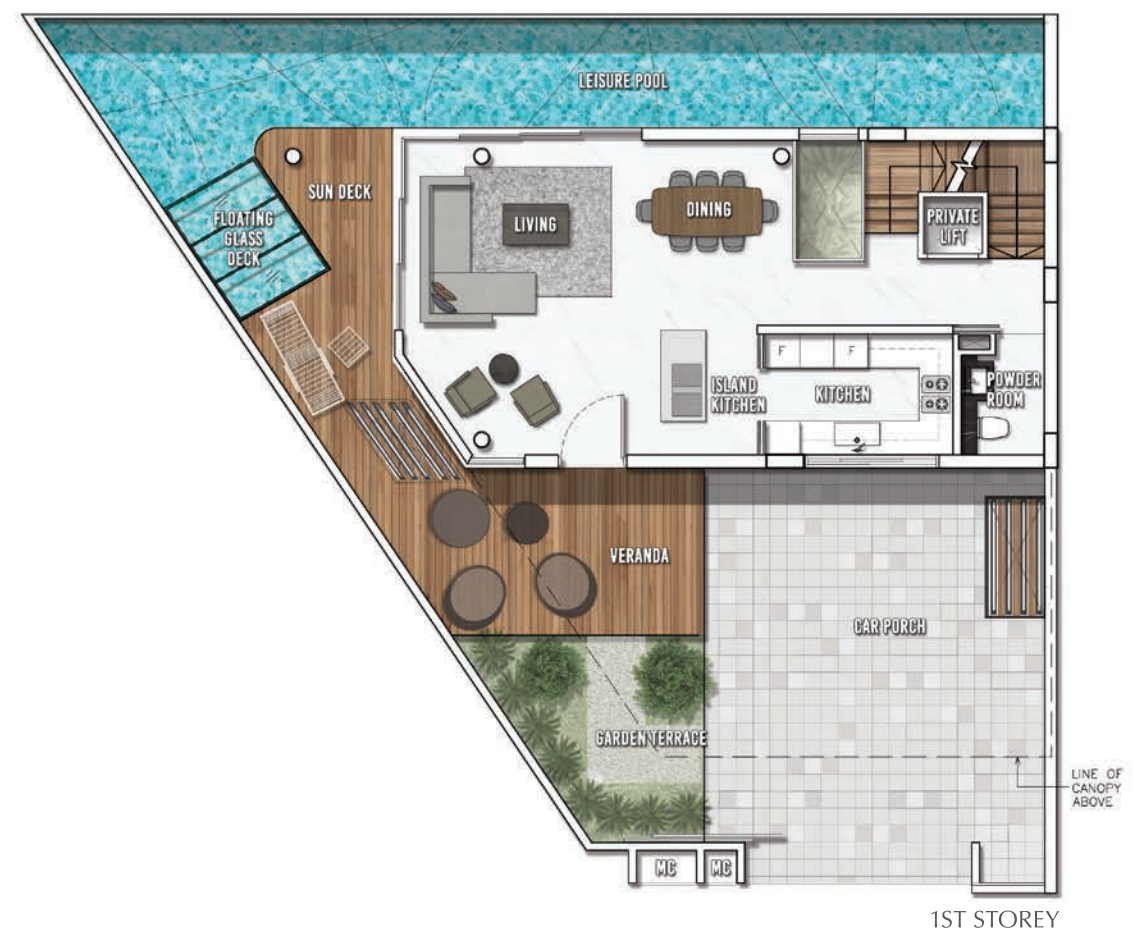
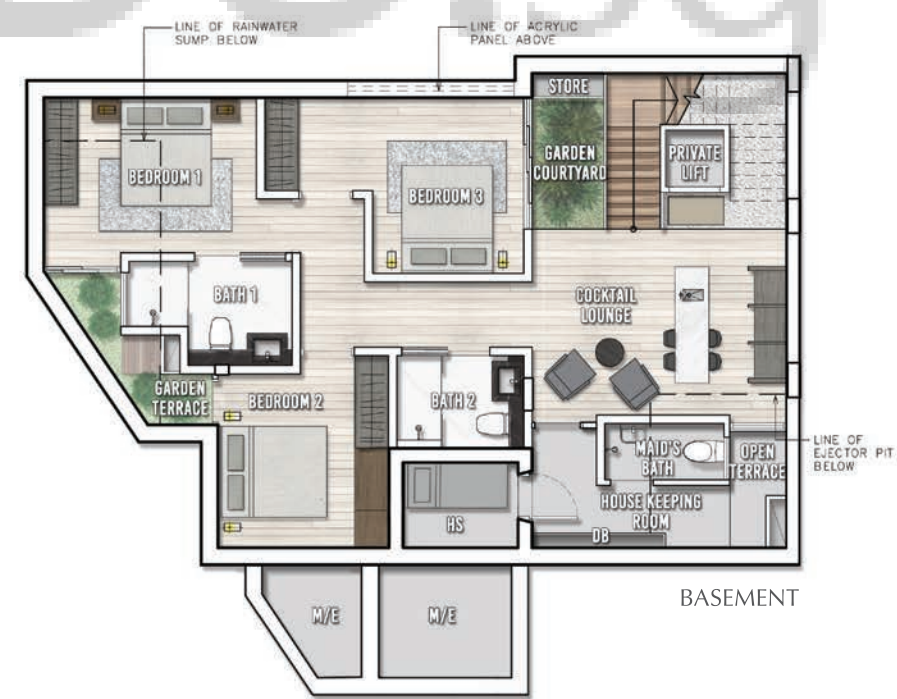
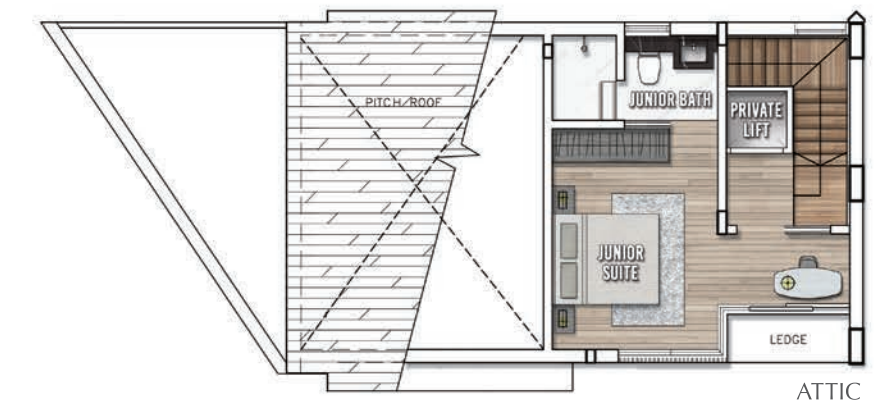
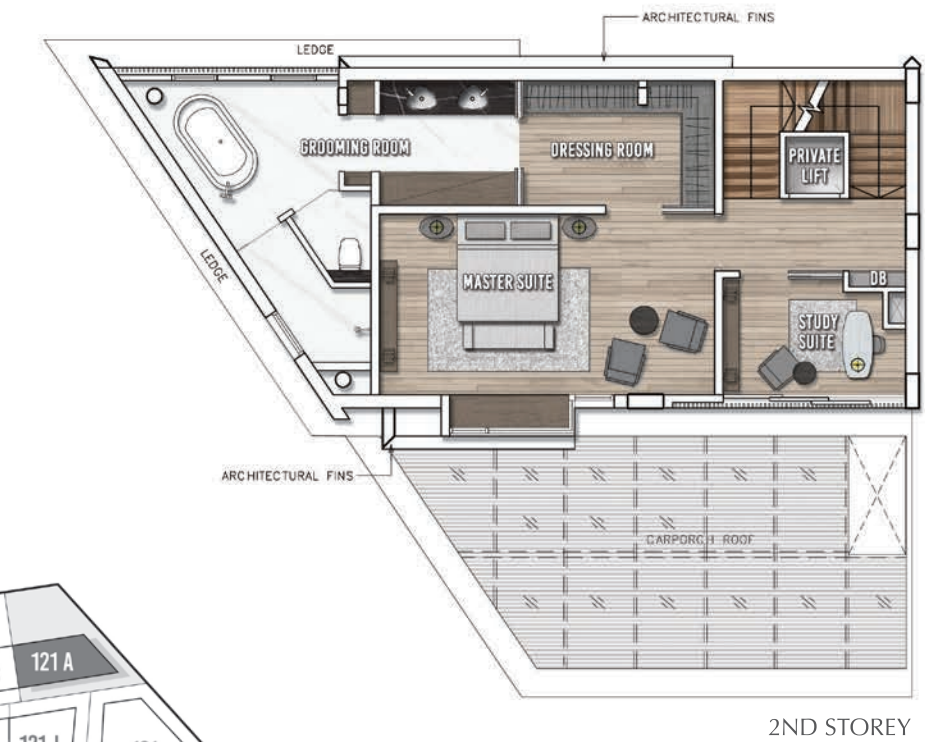
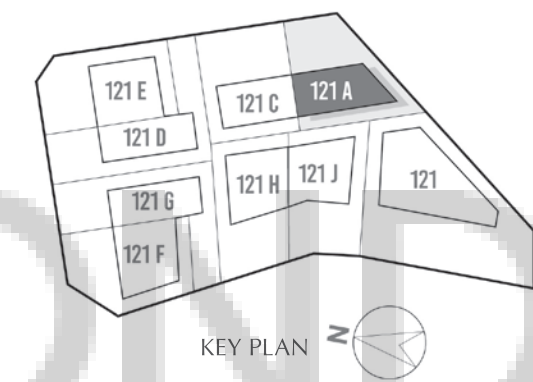


Amethyst

121A Whitley Road
Singapore 297834

Land area: 200 sqm / 2,153 sqft
Est. Built-Up area: 430 sqm / 4,629 sqft

Providing calm and balance, Amethyst reassures the inner sanctum of home with its ability to enhance emotional stability and inner strength.



Plans are subject to any amendments as may be required or approved by the relevant authorities. Plans are not drawn to scale and are for the purpose of visual presentation only. All areas are approximate and are subject to final survey.

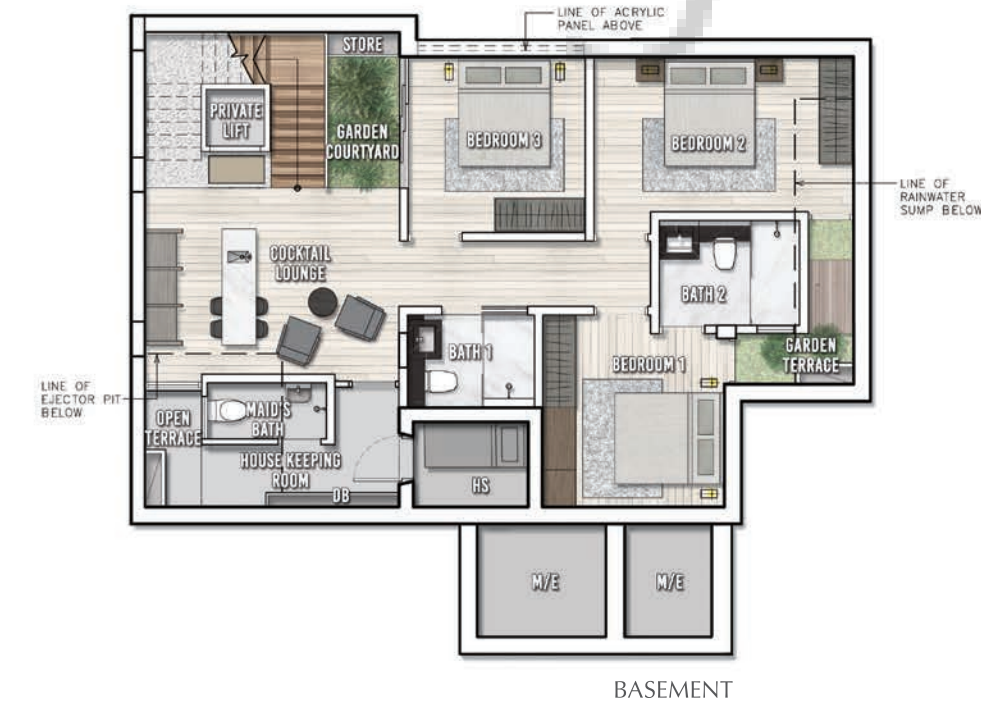
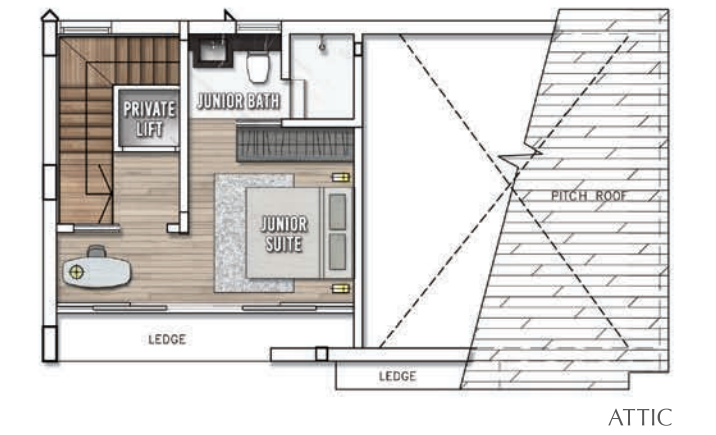
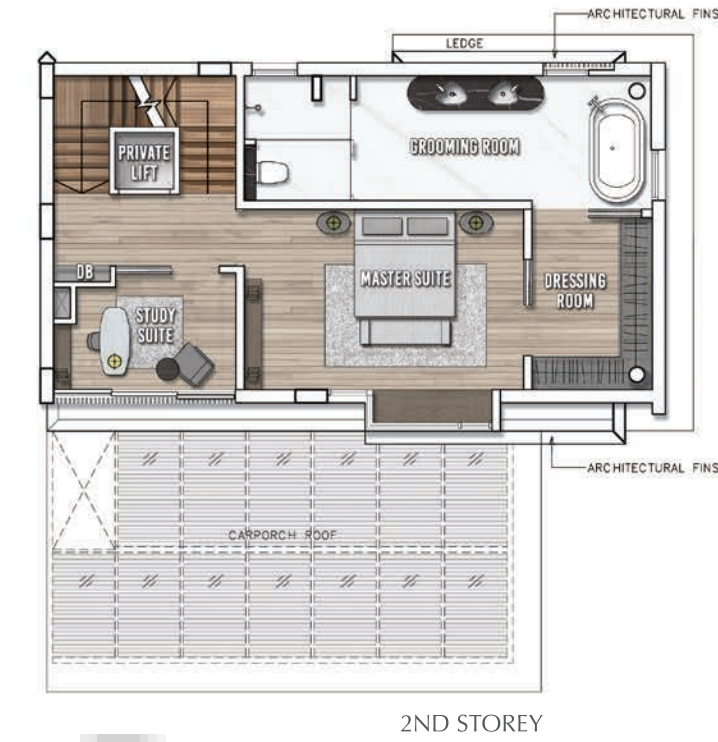
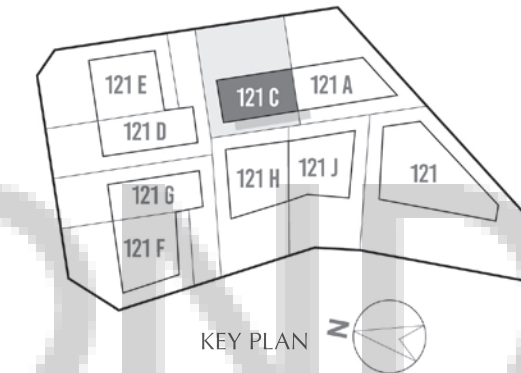


Coral

121C Whitley Road
Singapore 297815

Land area: 200 sqm / 2,153 sqft
Est. Built-Up area: 412 sqm / 4,435 sqft

Like the gemstone's healing and emotional properties, Coral protects and strengthens one's emotional foundation, protecting the owner from harm.



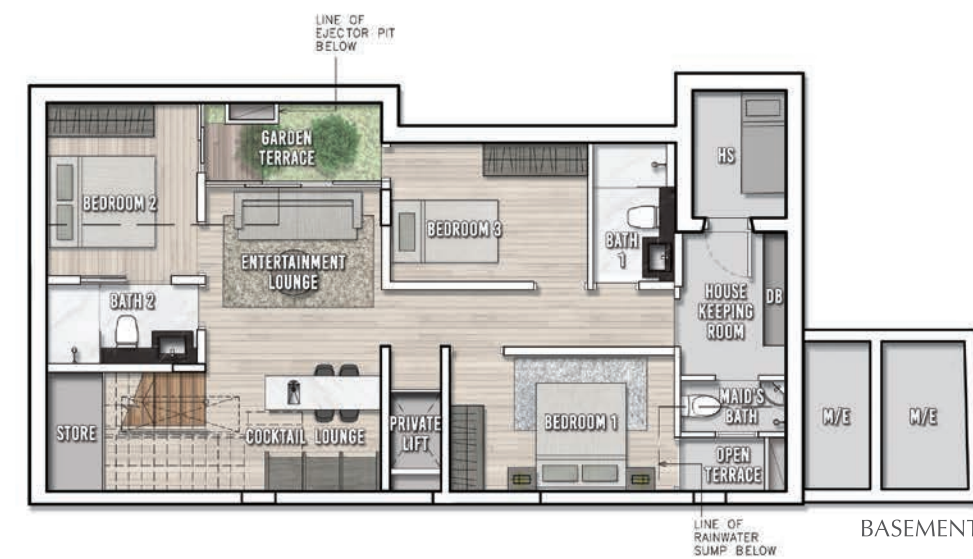
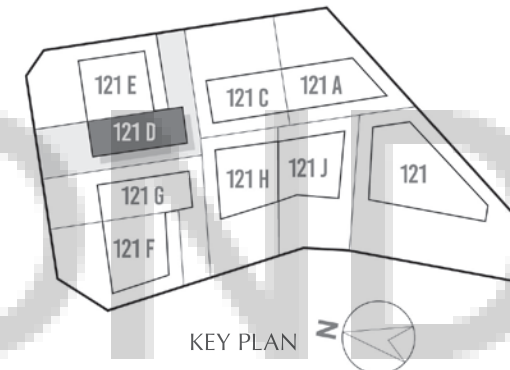
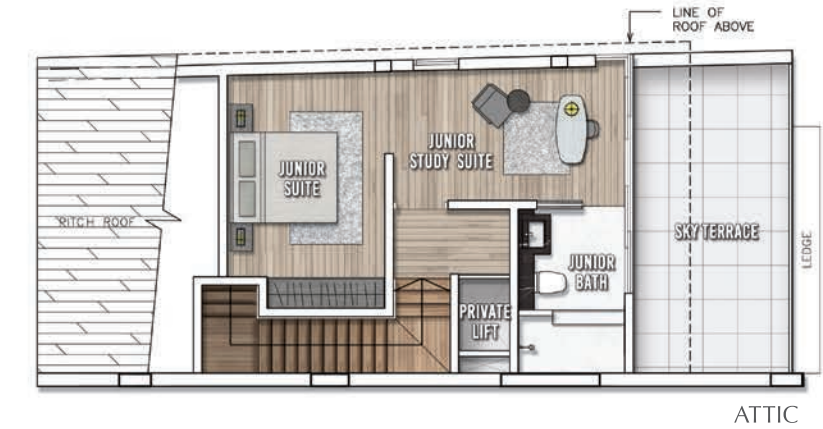
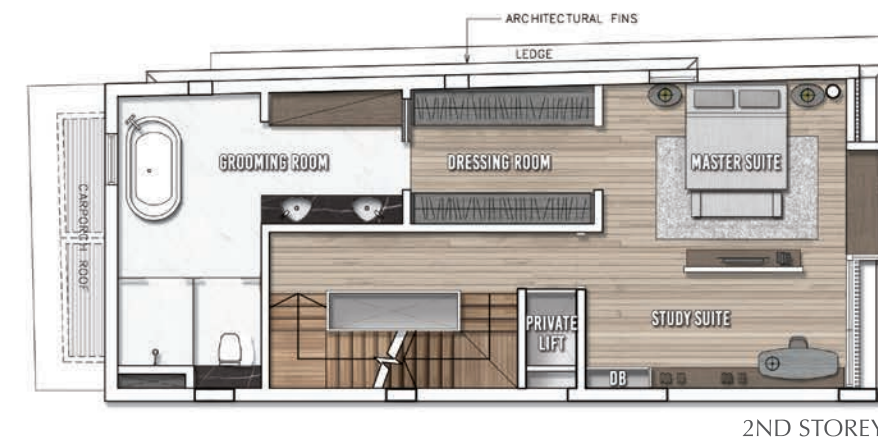
Plans are subject to any amendments as may be required or approved by the relevant authorities. Plans are not drawn to scale and are for the purpose of visual presentation only. All areas are approximate and are subject to final survey.

Diamond

121D Whitley Road
Singapore 297703

Land area: 212 sqm / 2,282 sqft
Est. Built-Up area: 404 sqm / 4,349 sqft

The strongest precious stone,
Diamond symbolises power, strength,
brilliance and unparalleled beauty.



Plans are subject to any amendments as may be required or approved by the relevant authorities. Plans are not drawn to scale and are for the purpose of visual presentation only. All areas are approximate and are subject to final survey.

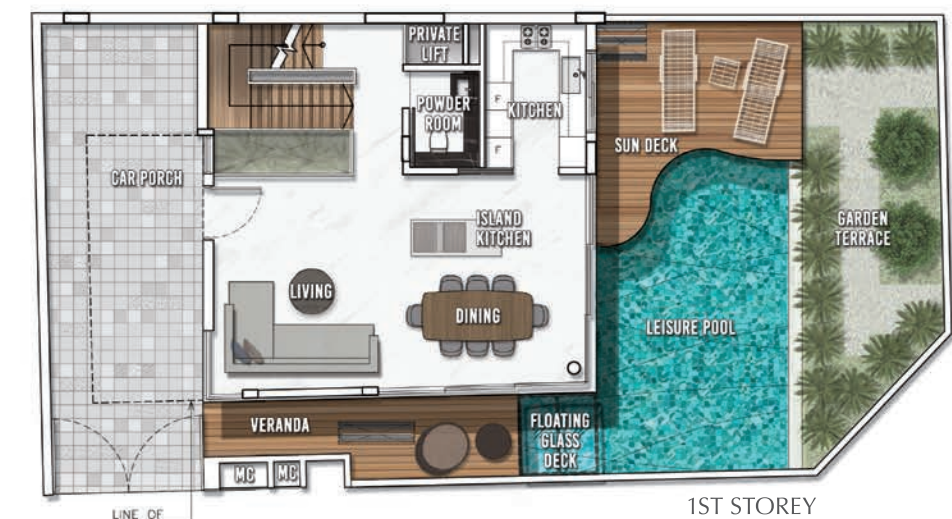
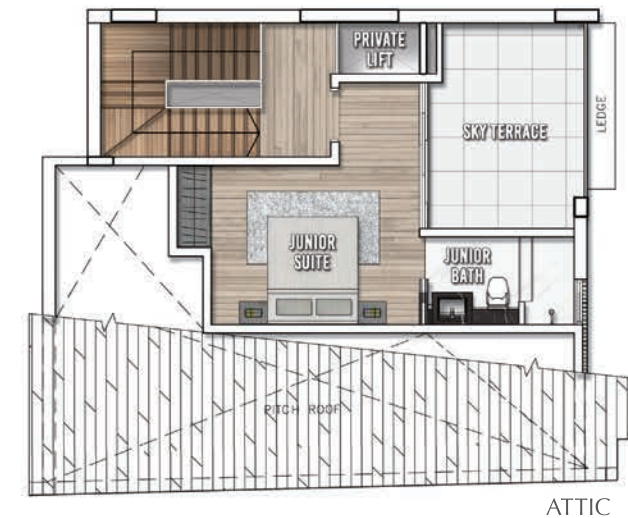
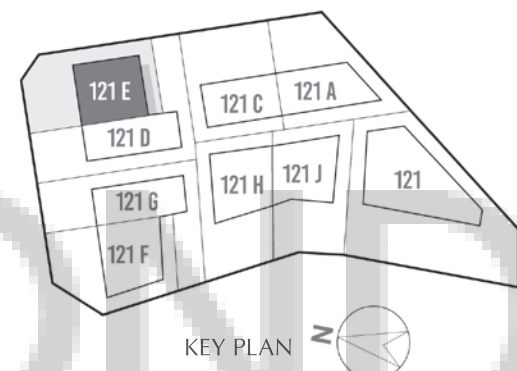


Emerald

121E Whitley Road
Singapore 297704

Land area: 200 sqm / 2,153 sqft
Est. Built-Up area: 420 sqm / 4,521 sqft

Called the Stone of Successful Love, Emerald opens and nurtures the heart to provide soothing energy, bringing freshness and vitality to the spirit.



Plans are subject to any amendments as may be required or approved by the relevant authorities. Plans are not drawn to scale and are for the purpose of visual presentation only. All areas are approximate and are subject to final survey.

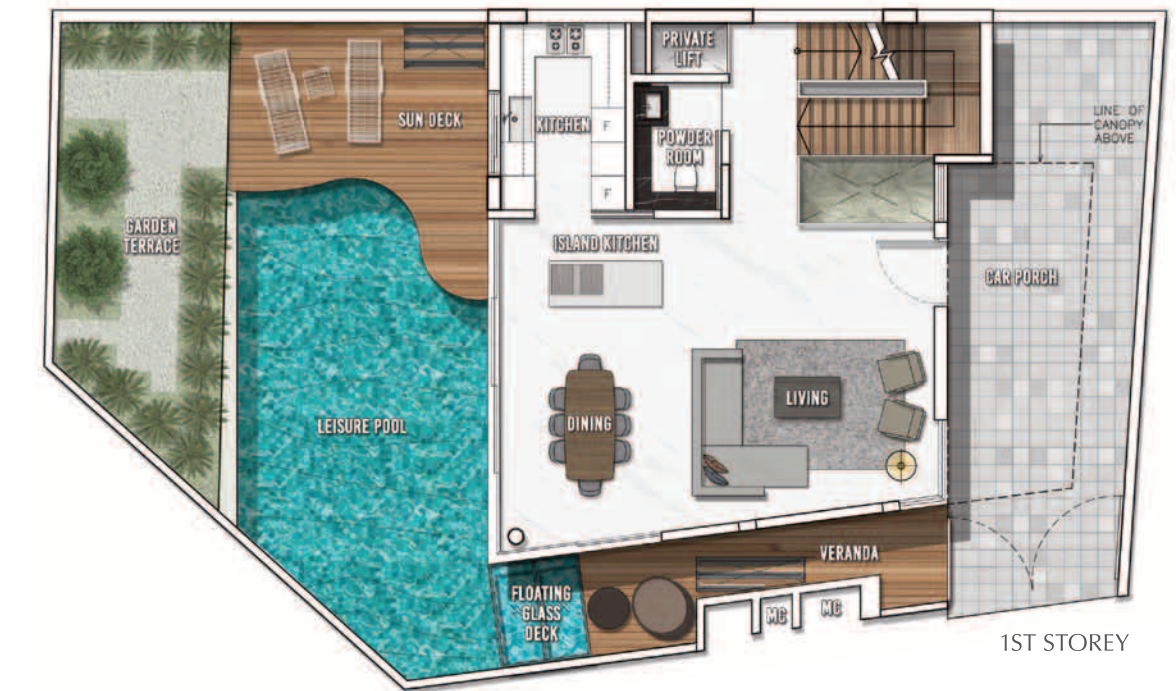
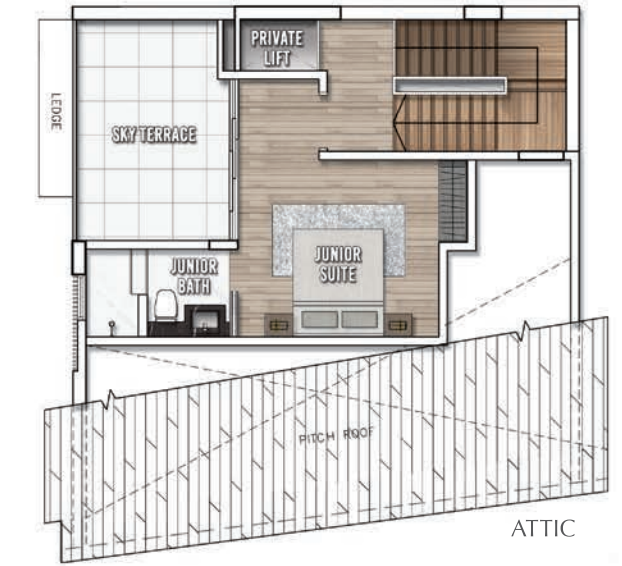
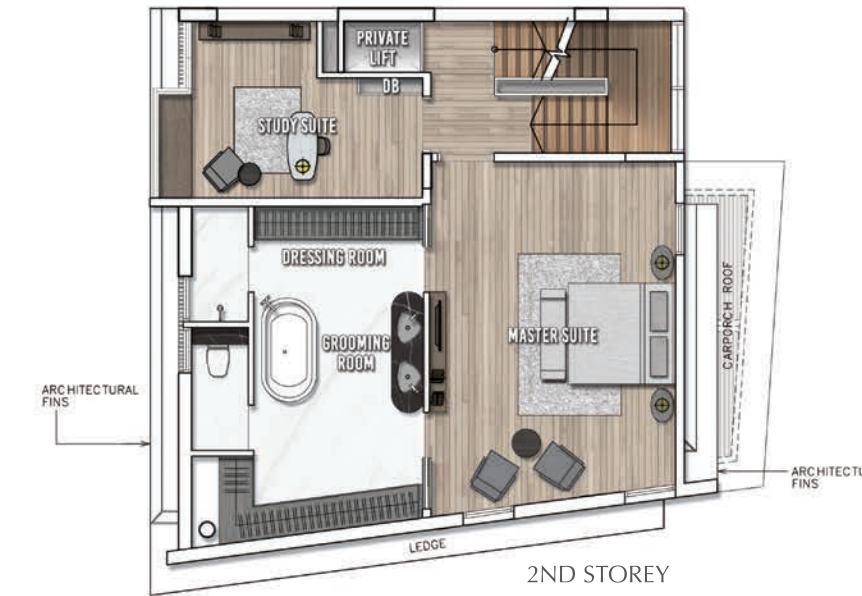
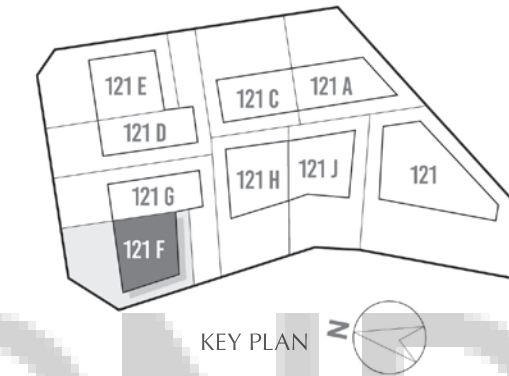


Fuchsia

121F Whitley Road
Singapore 297705

Land area: 200 sqm / 2,153 sqft
Est. Built-Up area: 439 sqm / 4,725 sqft

Perfect for nurturing a family,
Fuchsia inspires confidence
and unconditional love and
understanding, as well as giving
and receiving of nurturing.



Plans are subject to any amendments as may be required or approved by the relevant authorities. Plans are not drawn to scale and are for the purpose of visual presentation only. All areas are approximate and are subject to final survey.

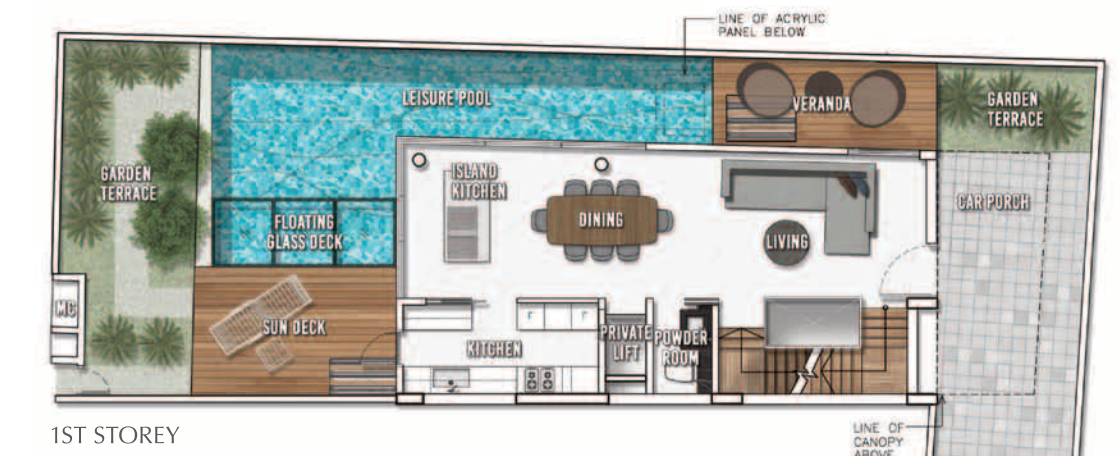
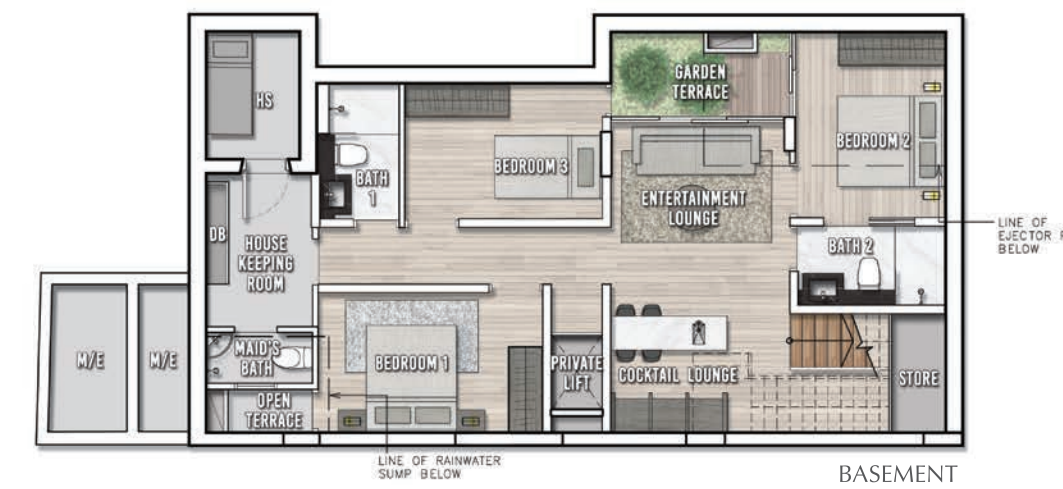
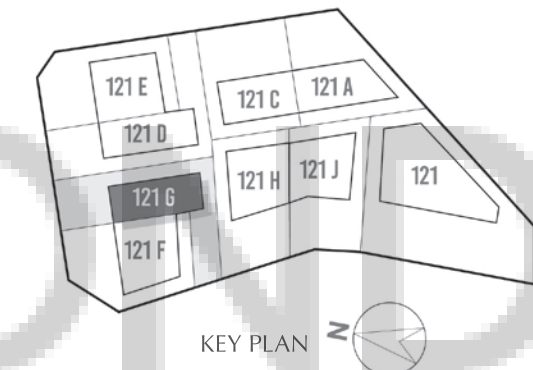
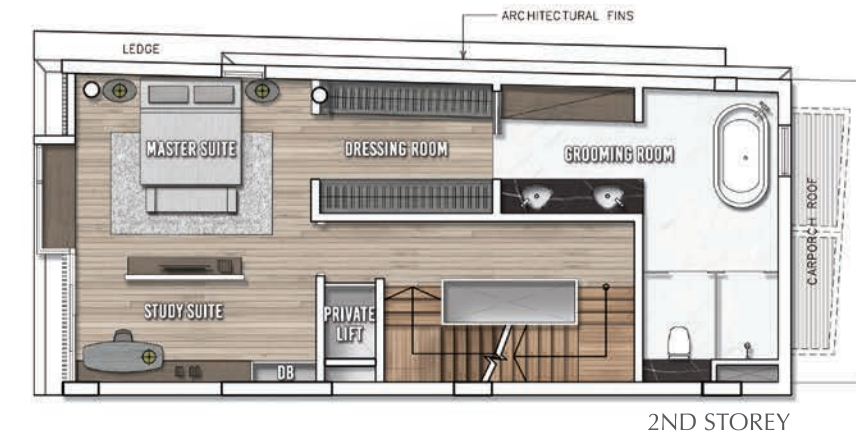


Garnet

121G Whitley Road
Singapore 297706

Land area: 208 sqm / 2,239 sqft
Est. Built-Up area: 392 sqm / 4,219 sqft

The Garnet is known as the stone for a successful business. Bringing consistency to friendships, Garnet stimulates success in business.



Plans are subject to any amendments as may be required or approved by the relevant authorities. Plans are not drawn to scale and are for the purpose of visual presentation only. All areas are approximate and are subject to final survey.

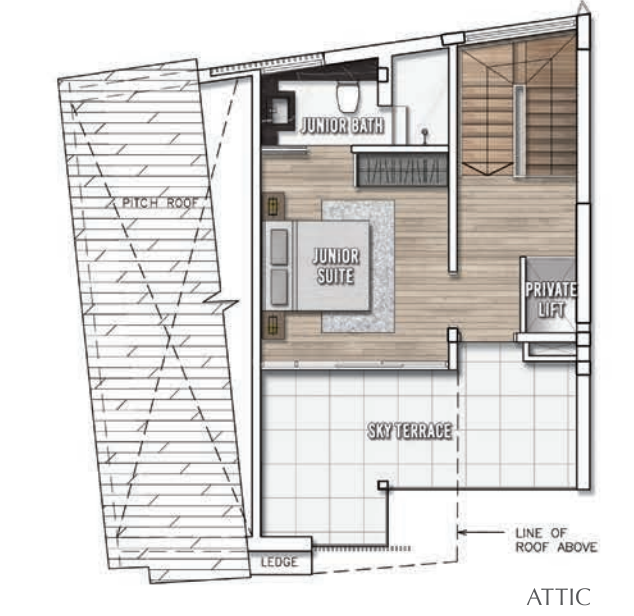
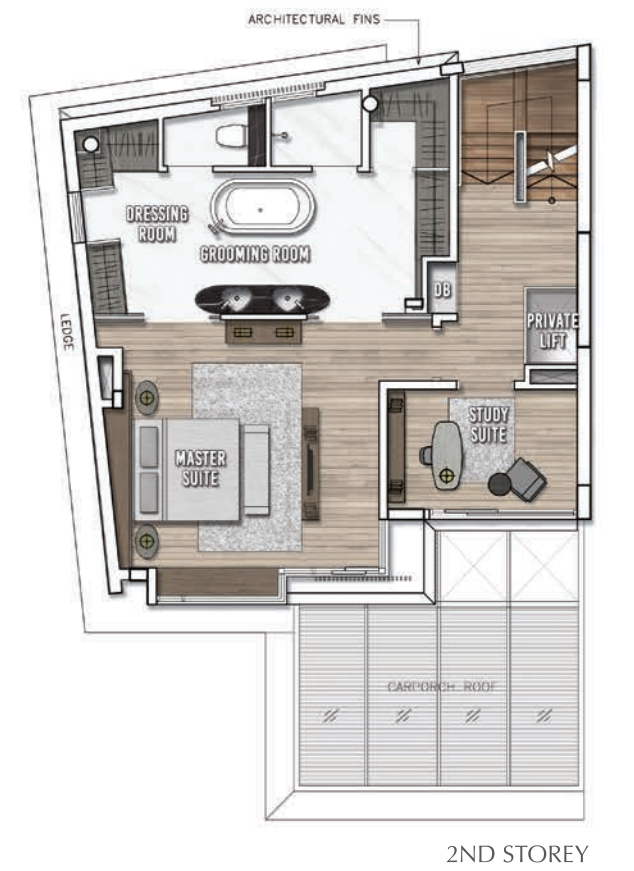
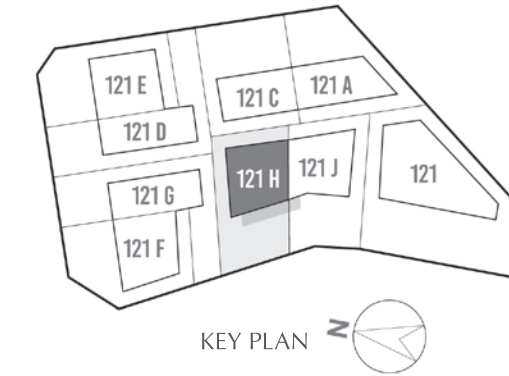


Hematite

121H Whitley Road
Singapore 297707

Land area: 200 sqm / 2,153 sqft
Est. Built-Up area: 424 sqm / 4,564 sqft

Known as the Stone for the Mind, Hematite is outstanding at grounding out excess energy and acting as a stabilising force.



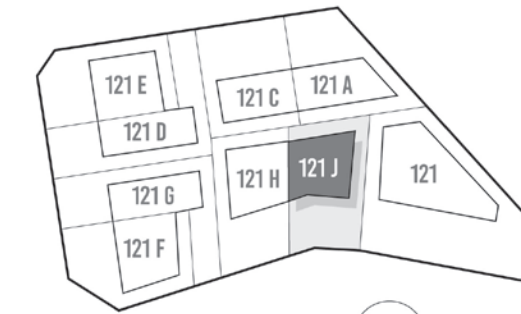


Jade

121J Whitley Road
Singapore 297708

Land area: 200 sqm / 2,153 sqft
Est. Built-Up area: 454 sqm / 4,887 sqft

Like the healing properties of the wonderful stone, Jade strengthens mental faculties and guards against accidents and misfortune.



KEY PLAN



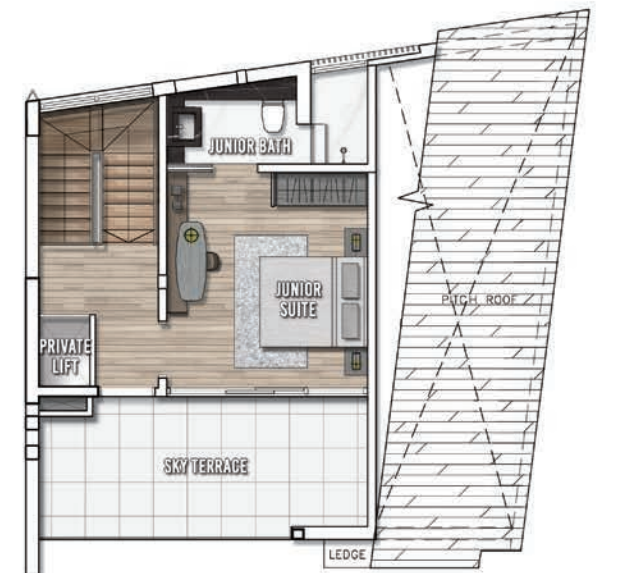
BASEMENT



1ST STOREY



2ND STOREY



ATTIC

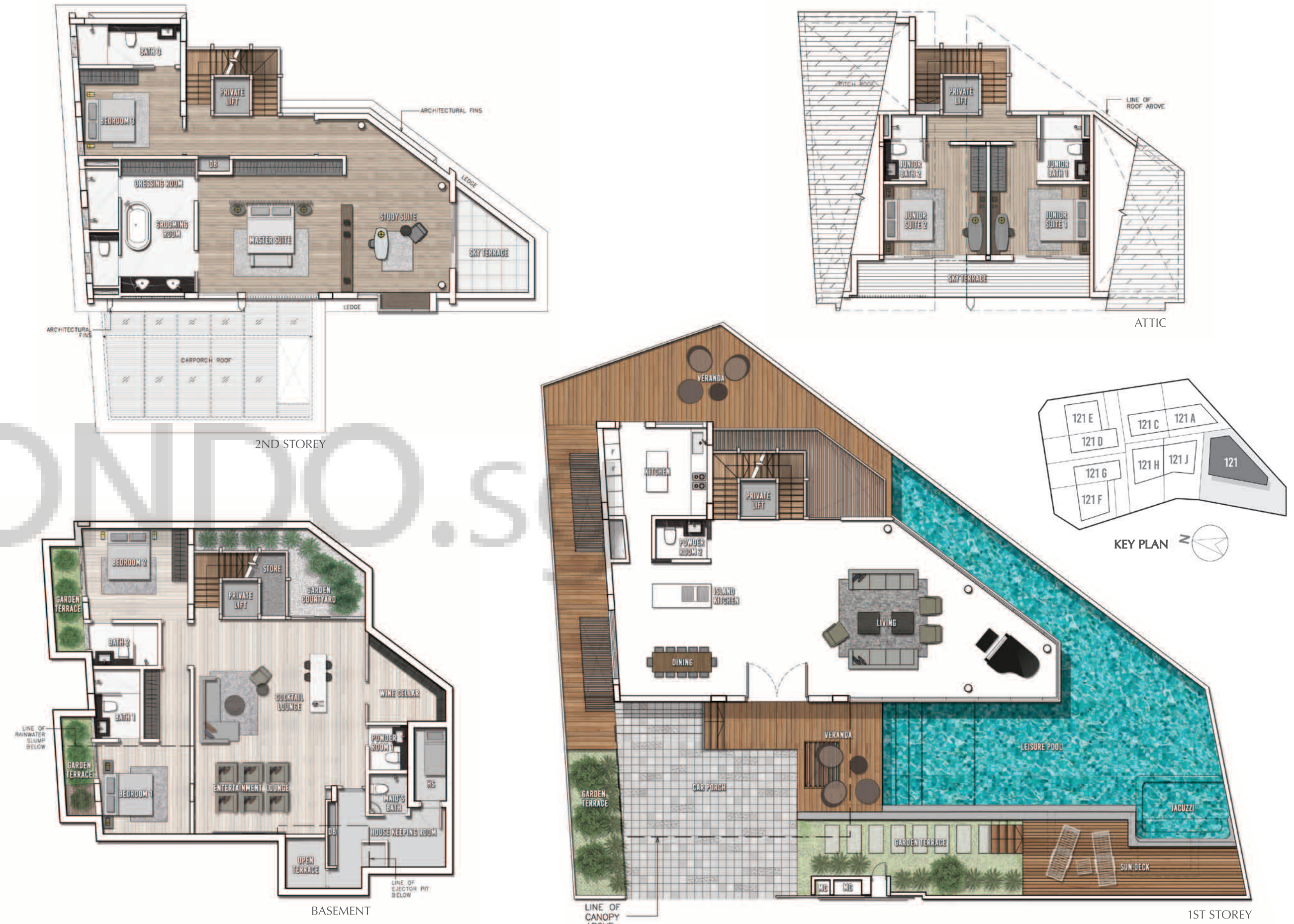
Plans are subject to any amendments as may be required or approved by the relevant authorities. Plans are not drawn to scale and are for the purpose of visual presentation only. All areas are approximate and are subject to final survey.

Sapphire

121 Whitley Road
Singapore 297813

Land area: 415 sqm / 4,467 sqft
Est. Built-Up area: 804 sqm / 8,654 sqft

A gem of wisdom and royalty, the Sapphire, in its heavenly blue colour stands magnificently as a symbol of elegance and power.



Plans are subject to any amendments as may be required or approved by the relevant authorities. Plans are not drawn to scale and are for the purpose of visual presentation only. All areas are approximate and are subject to final survey.