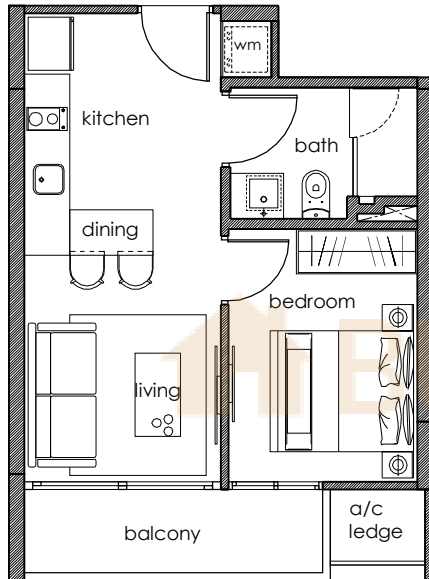


Type A1

(2nd ~ 4th Storey)
1 Bedroom
Area: 38 sqm

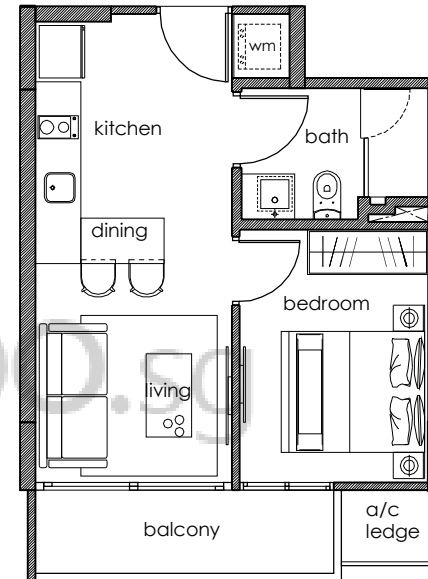
Unit #02-06
#03-06
#04-06



Type A2

(2nd ~ 4th Storey)
1 Bedroom
Area: 38 sqm

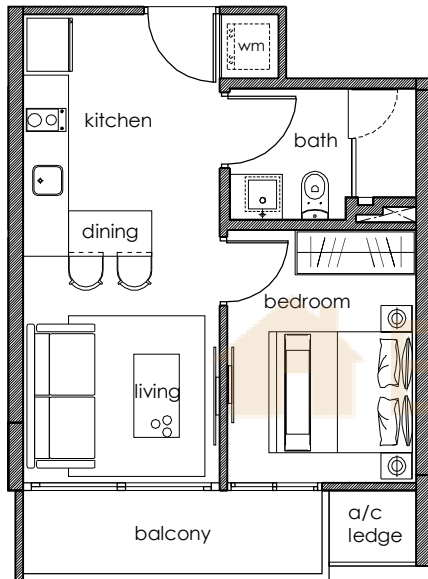
Unit #02-05
#03-05
#04-05



Type A3

(2nd ~ 4th Storey)
1 Bedroom
Area: 38 sqm

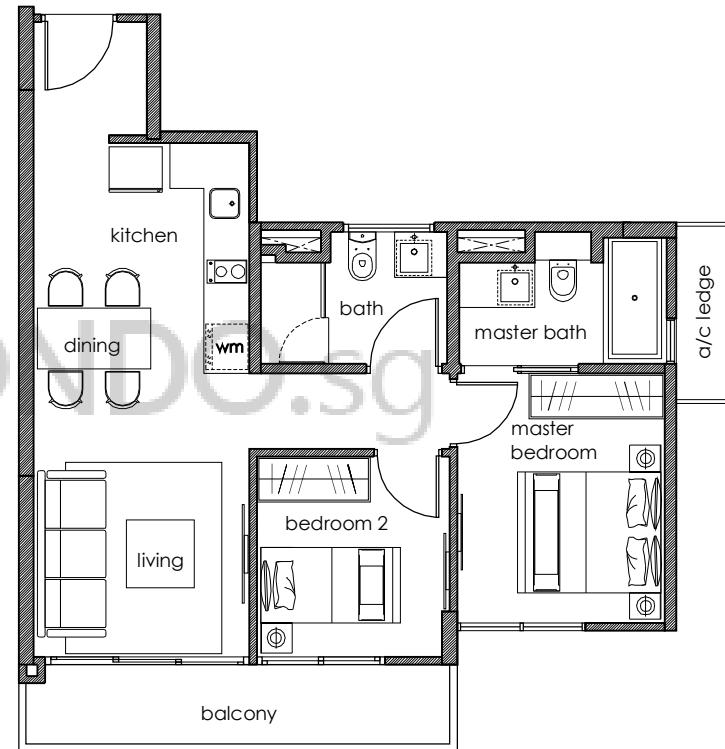
Unit #02-04
#03-04
#04-04



Type B1

(2nd ~ 4th Storey)
2 Bedroom
Area: 61 sqm

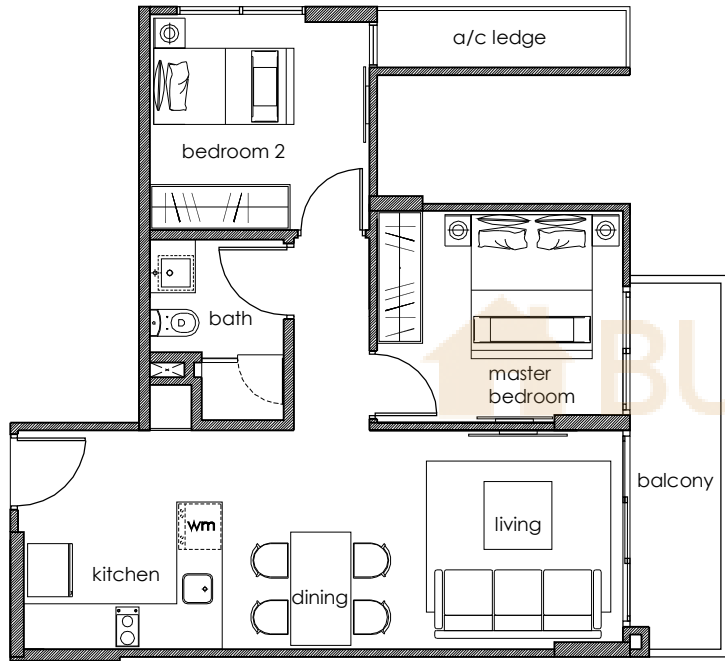
Unit #02-03
#03-03
#04-03



Type B2

(3rd ~ 4th Storey)
2 Bedroom
Area: 60 sqm

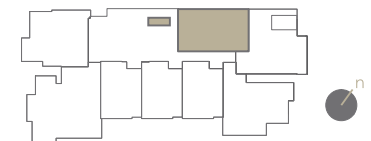
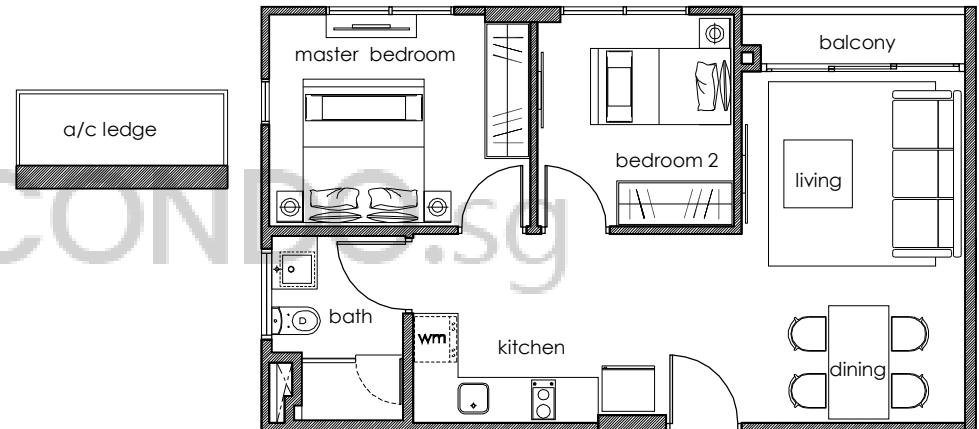
Unit #03-02
#04-02



Type B3

(2nd ~ 4th Storey)
2 Bedroom
Area: 54 sqm

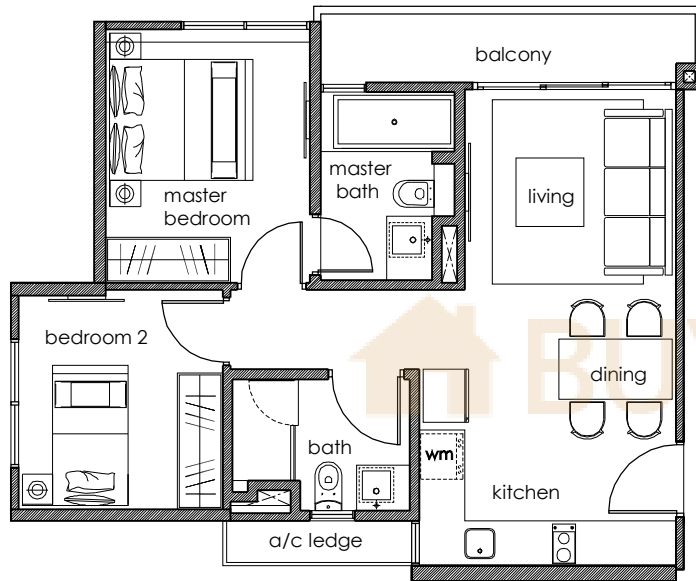
Unit #02-01
#03-01
#04-01



Type B4

(2nd ~ 4th Storey)
2 Bedroom
Area: 58 sqm

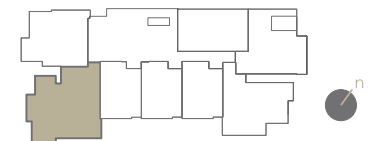
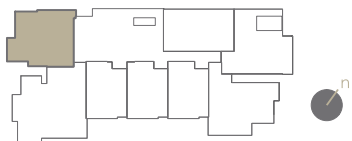
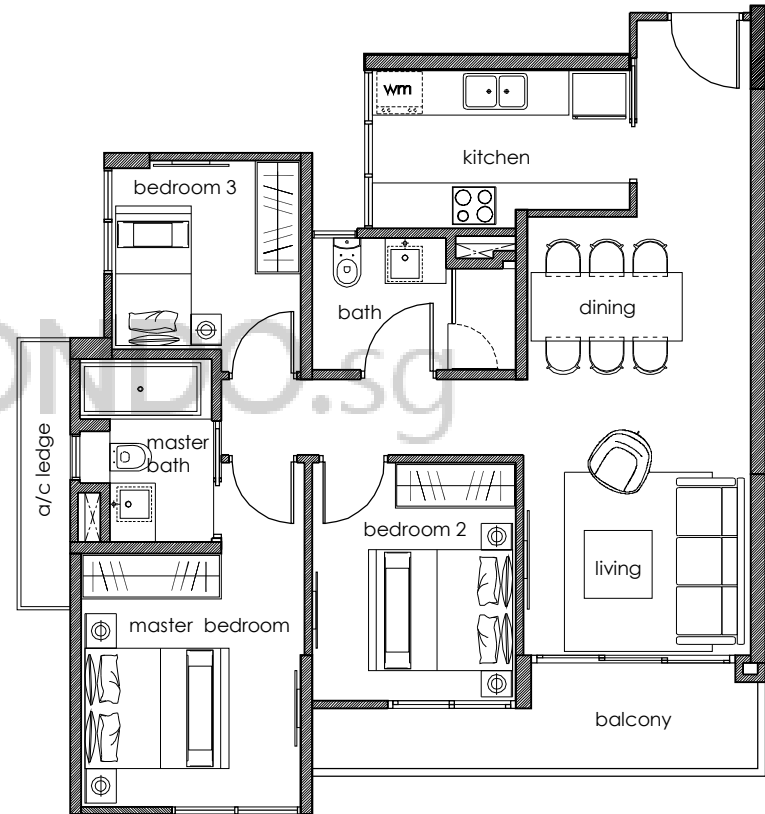
Unit #02-08
#03-08
#04-08



Type C

(2nd ~ 4th Storey)
3 Bedroom
Area: 83 sqm

Unit #02-07
#03-07
#04-07



The sliding windows for the master bedroom are adjoining the opposite wall at 3rd storey Type B4 unit (#03-08) and Type C unit (#03-07). The sliding doors for bedroom 2 are adjoining the opposite wall at 3rd storey Type C unit (#03-07). Floor areas are inclusive of balconies, a/c ledges, roof terraces and voids. Floor areas are approximate measurement and subject to final survey. The plans are subject to changes as required or approved by relevant authorities.

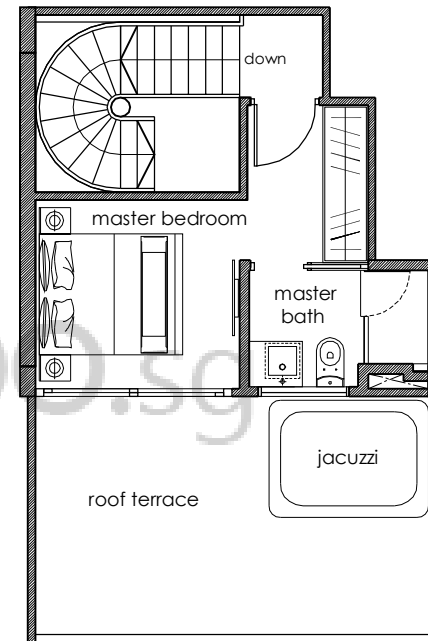
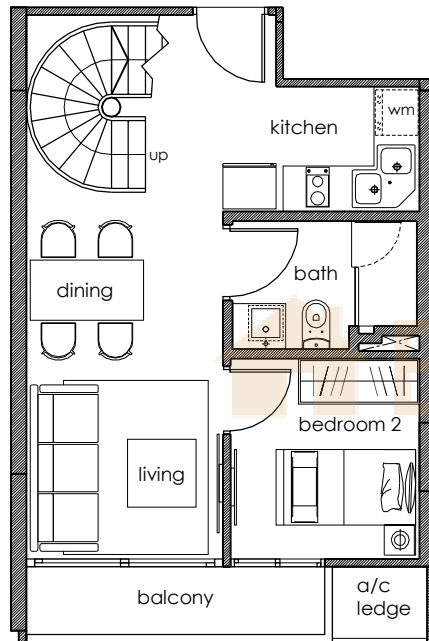
Type A1P

(5th & Attic Storey)

Unit #05-06

2 Bedroom

Area: 84 sqm



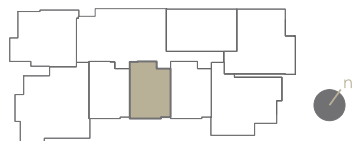
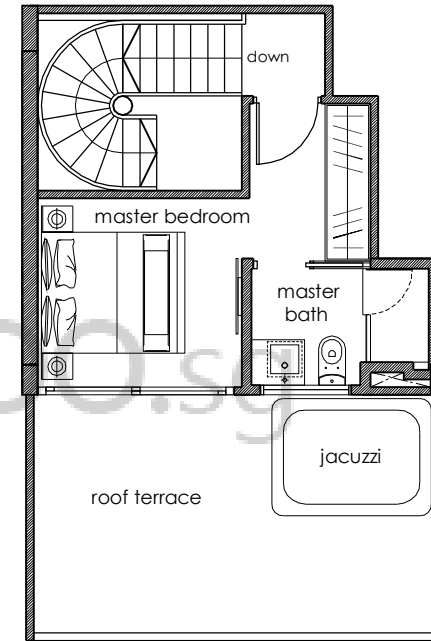
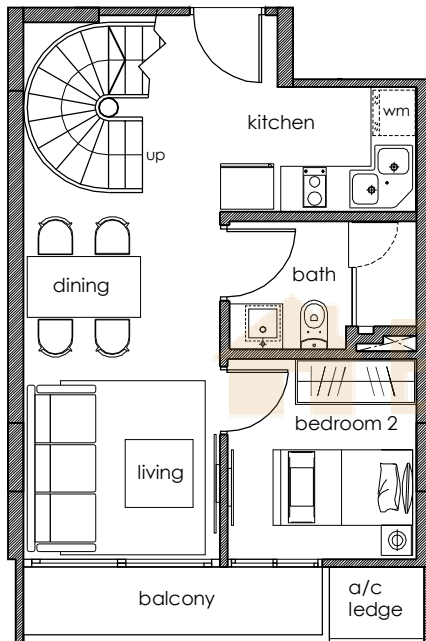
Type A2P

(5th & Attic Storey)

Unit #05-05

2 Bedroom

Area: 84 sqm



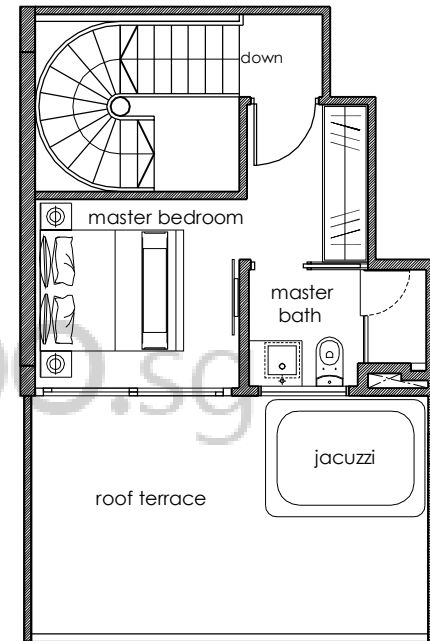
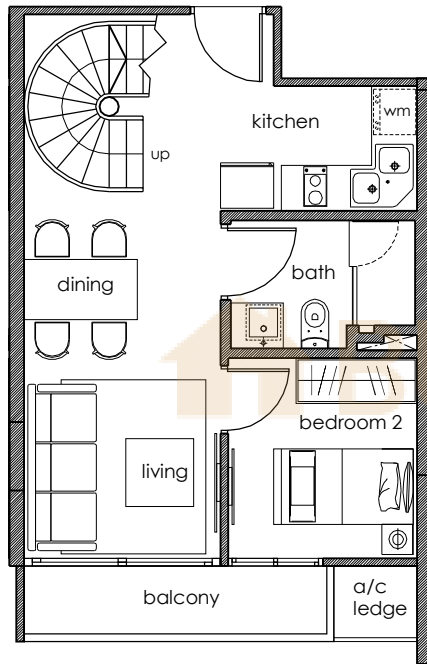
Type A3P

(5th & Attic Storey)

Unit #05-04

2 Bedroom

Area: 84 sqm



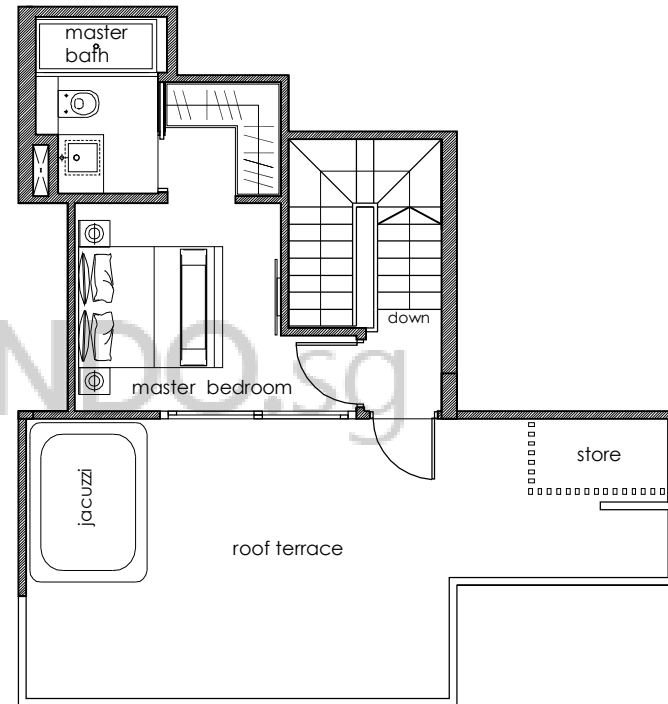
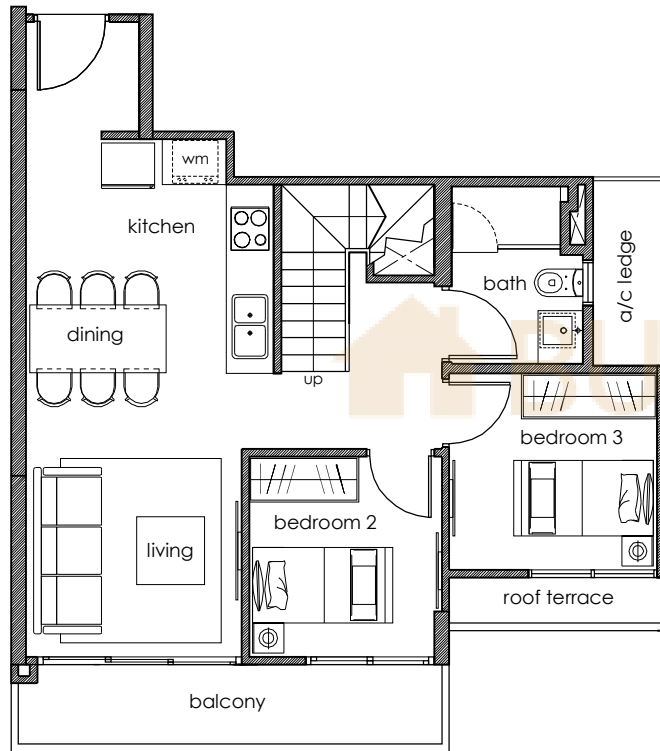
Type B1P

(5th & Attic Storey)

Unit #05-03

3 Bedroom

Area: 111 sqm



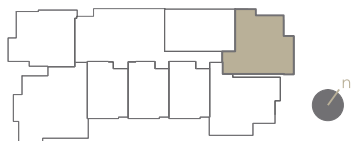
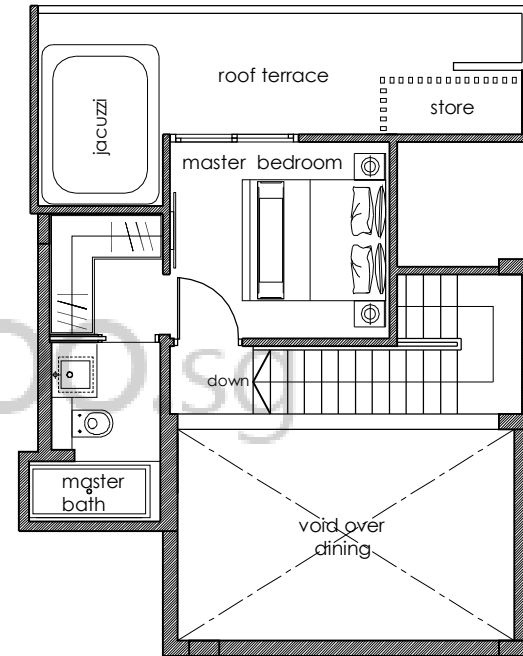
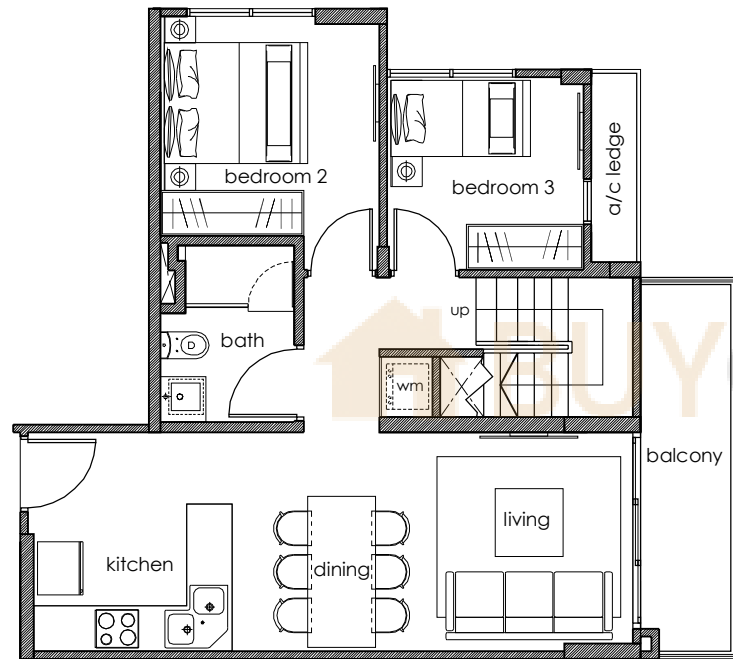
Type B2P

(5th & Attic Storey)

Unit #05-02

3 Bedroom

Area: 106 sqm



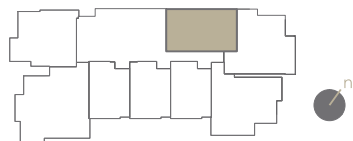
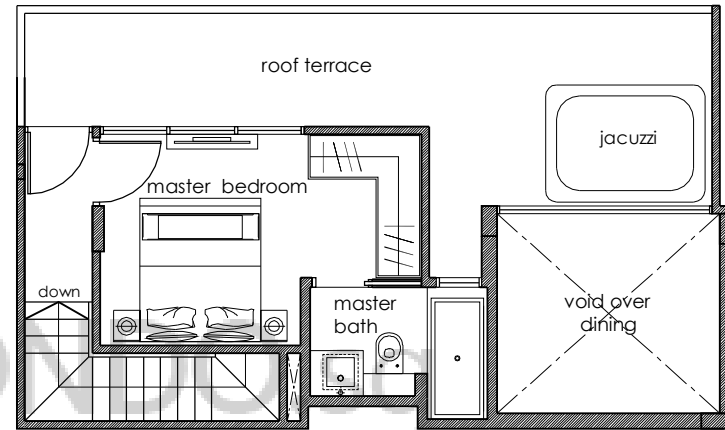
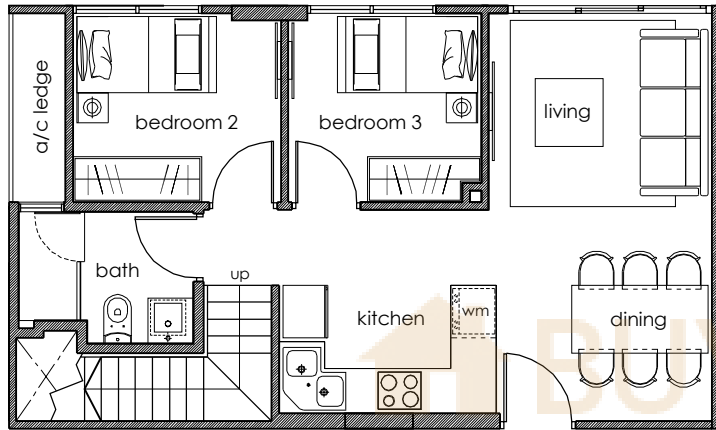
Type B3P

(5th & Attic Storey)

Unit #05-01

3 Bedroom

Area: 97 sqm



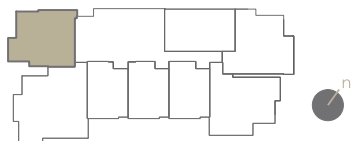
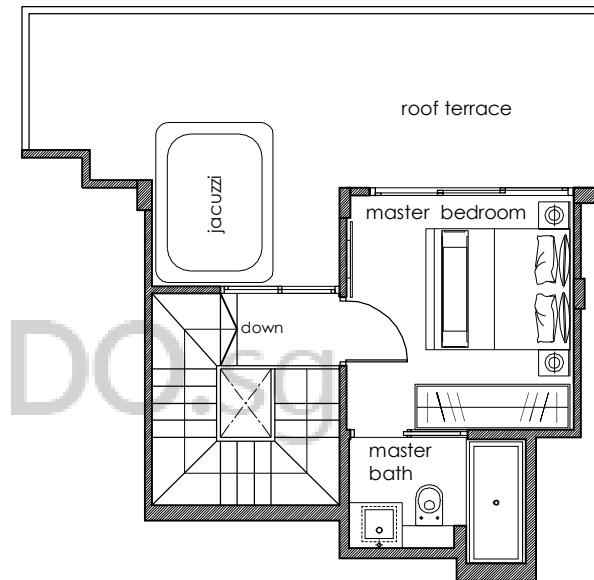
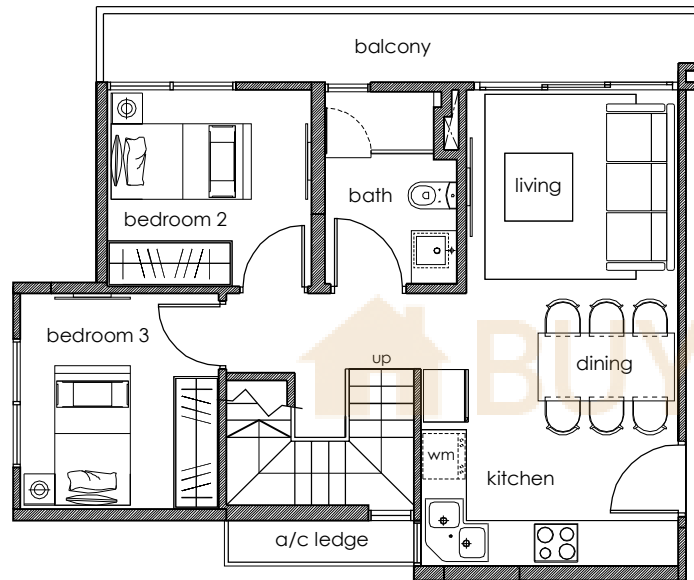
Type B4P

(5th & Attic Storey)

Unit #05-08

3 Bedroom

Area: 98 sqm



Type CP

(5th & Attic Storey)

Unit #05-07

3 + 1 Bedroom

Area: 144 sqm

