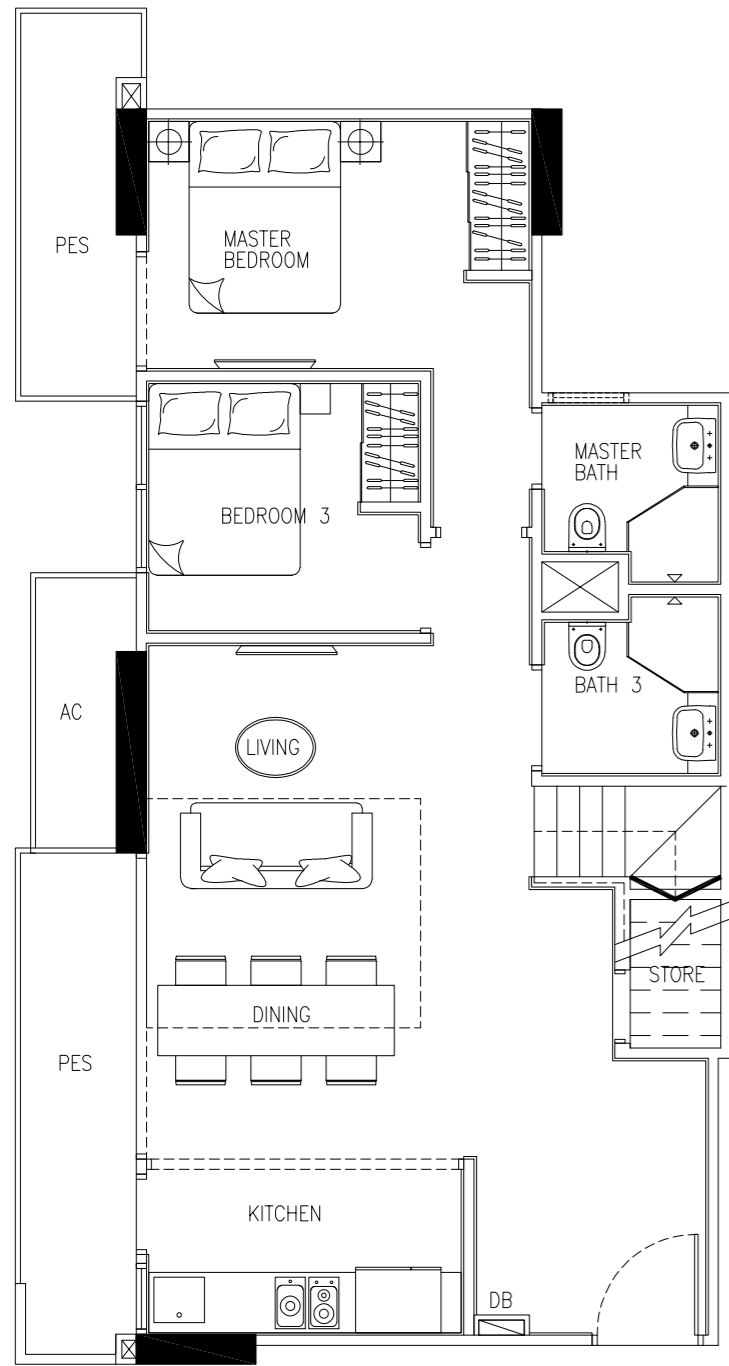
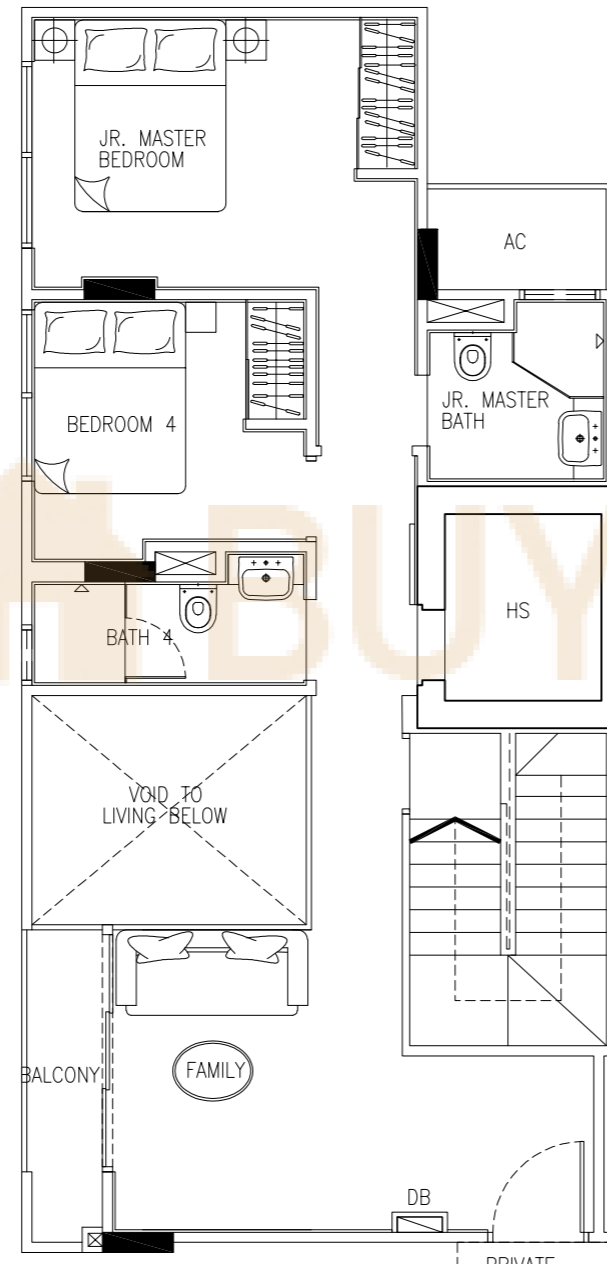


TYPE 1 (4-Bedroom)
 146 sqm / 1572 sqft
 #01-05

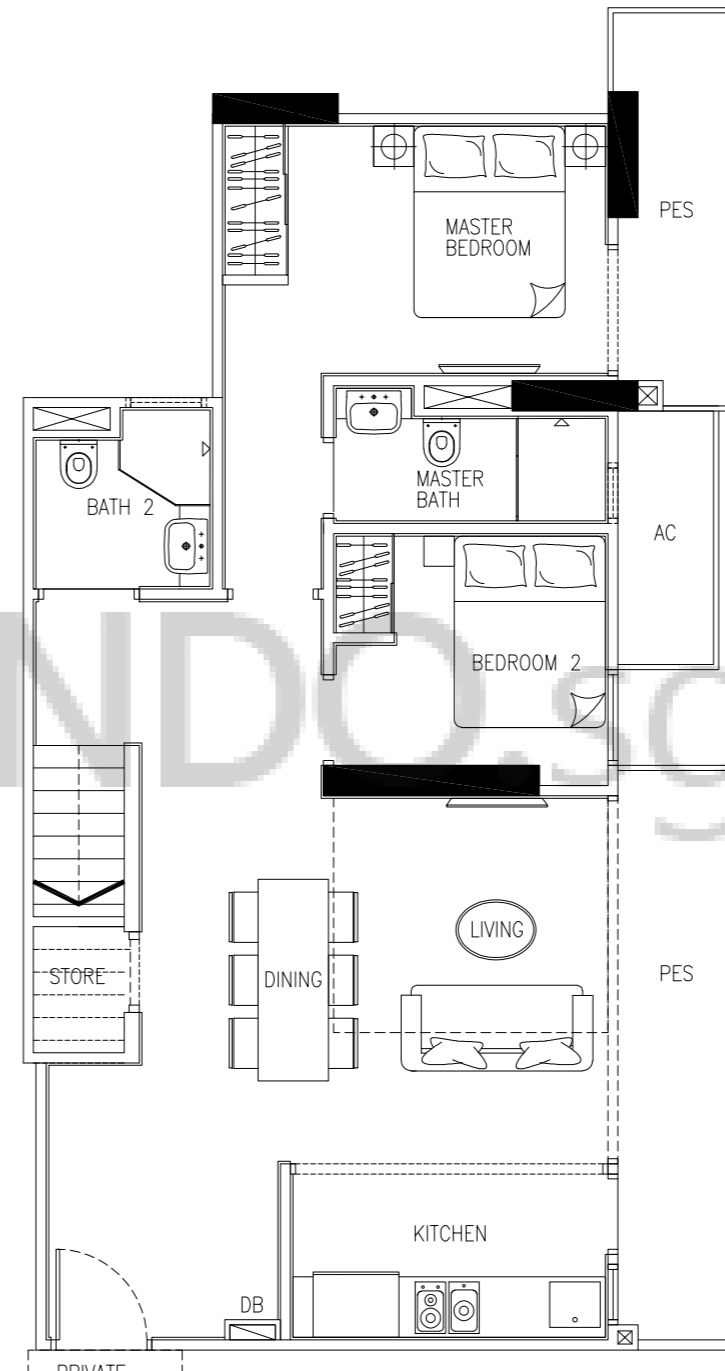


LOWER FLOOR

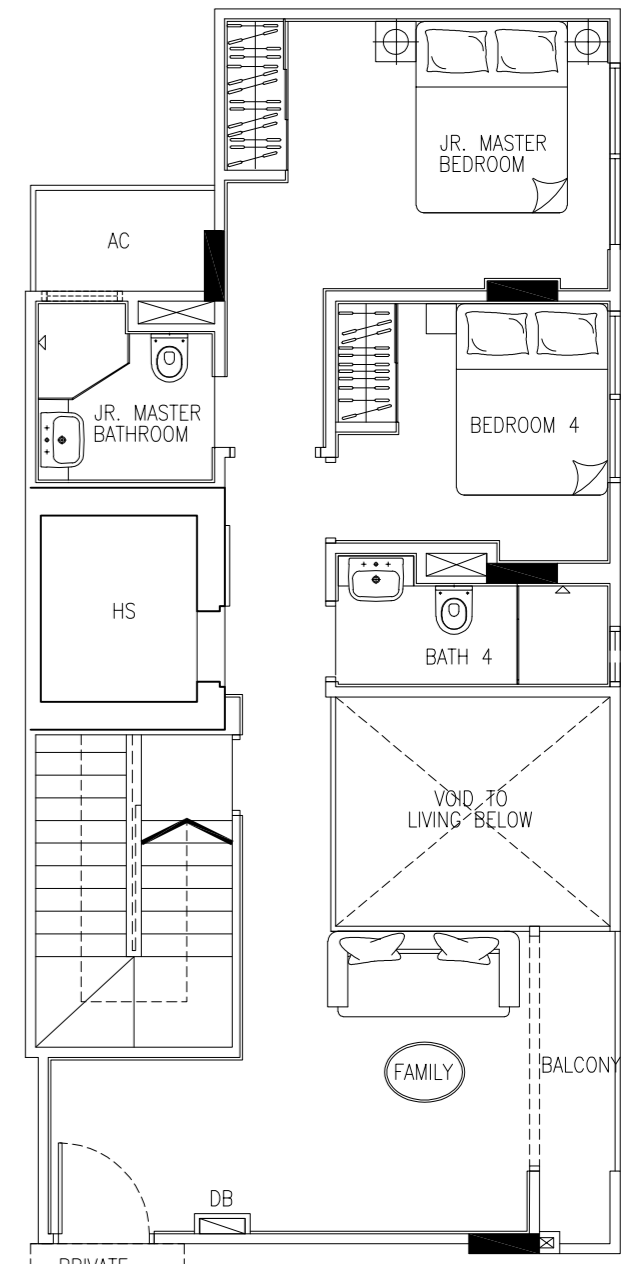


UPPER FLOOR

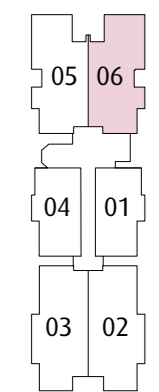
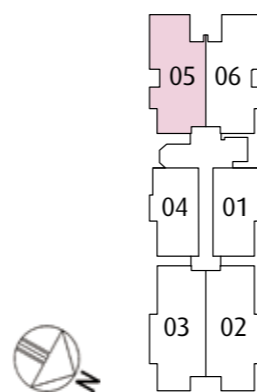
TYPE 1A (4-Bedroom)
 148 sqm / 1593 sqft
 #01-06



LOWER FLOOR



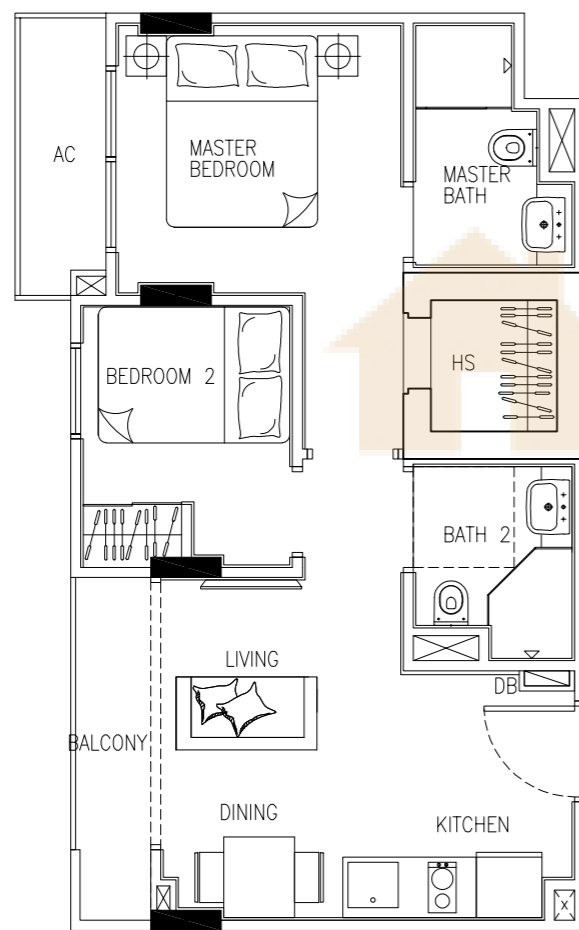
UPPER FLOOR



TYPE 2 (2-Bedroom)

45 sqm / 484 sqft

#02-01 #02-04 #03-01 #03-04
#04-01 #04-04 #05-01 #05-04

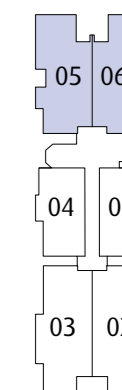
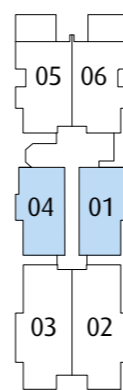
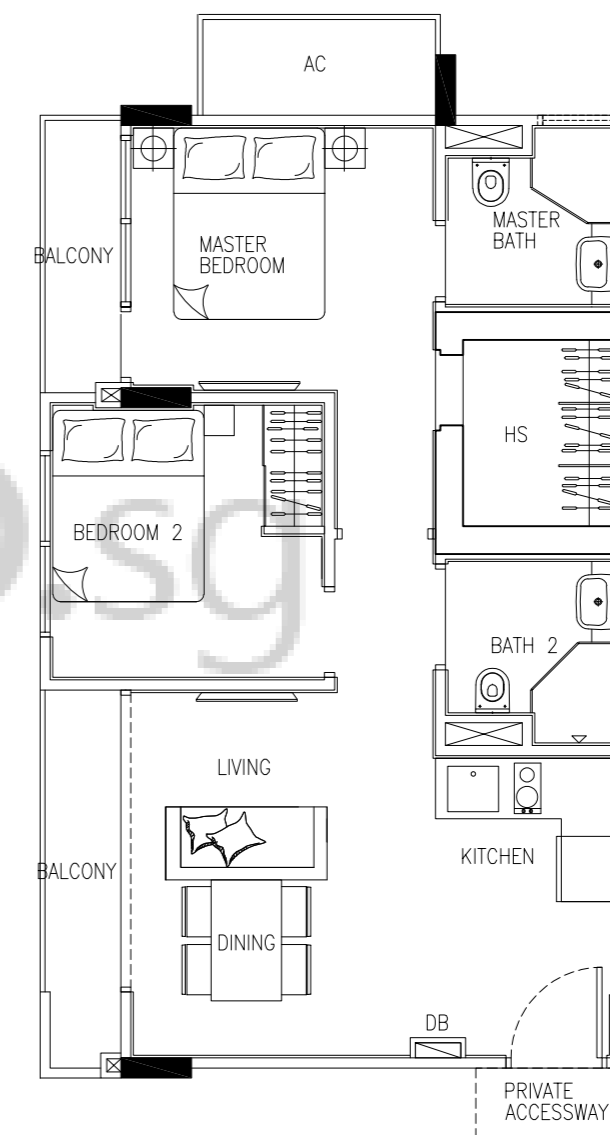


BUYCONDO.sg

TYPE 2A (2-Bedroom)

58 sqm / 624 sqft

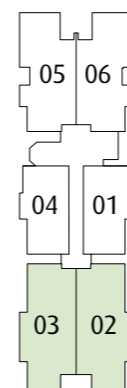
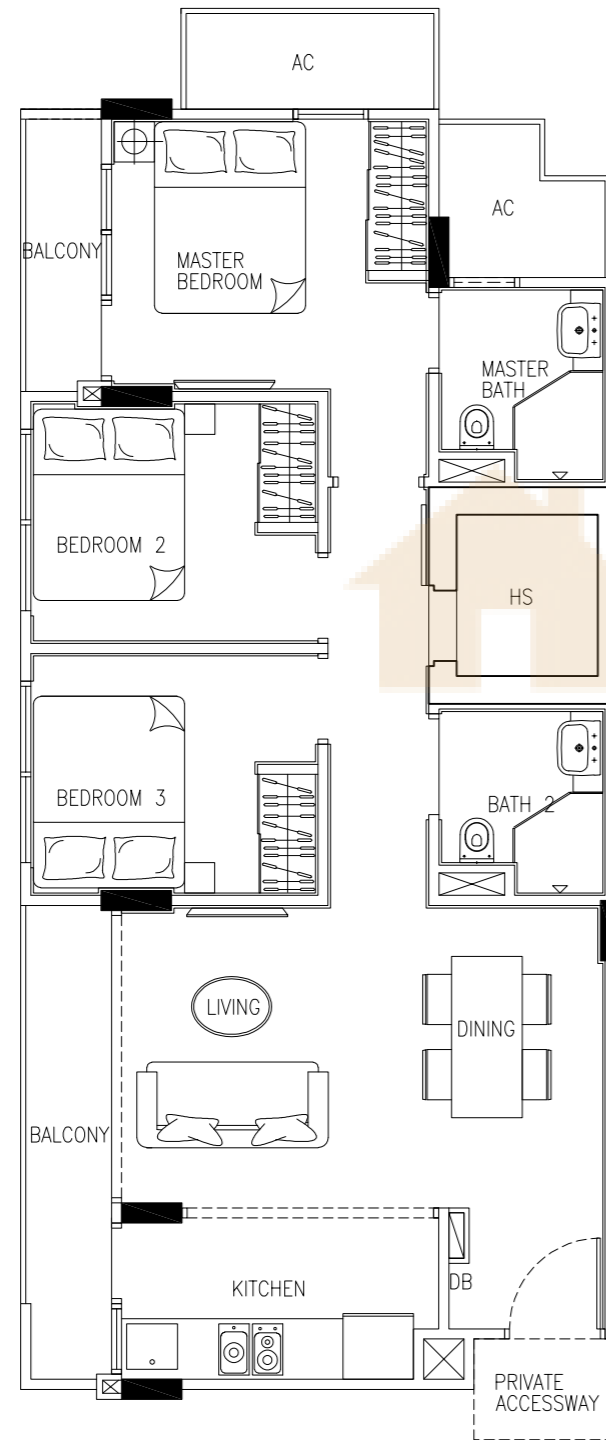
#03-05 #03-06 #04-05 #04-06



TYPE 3 (3-Bedroom)

75 sqm / 807 sqft

#02-02 #02-03 #03-02 #03-03
#04-02 #04-03 #05-02 #05-03



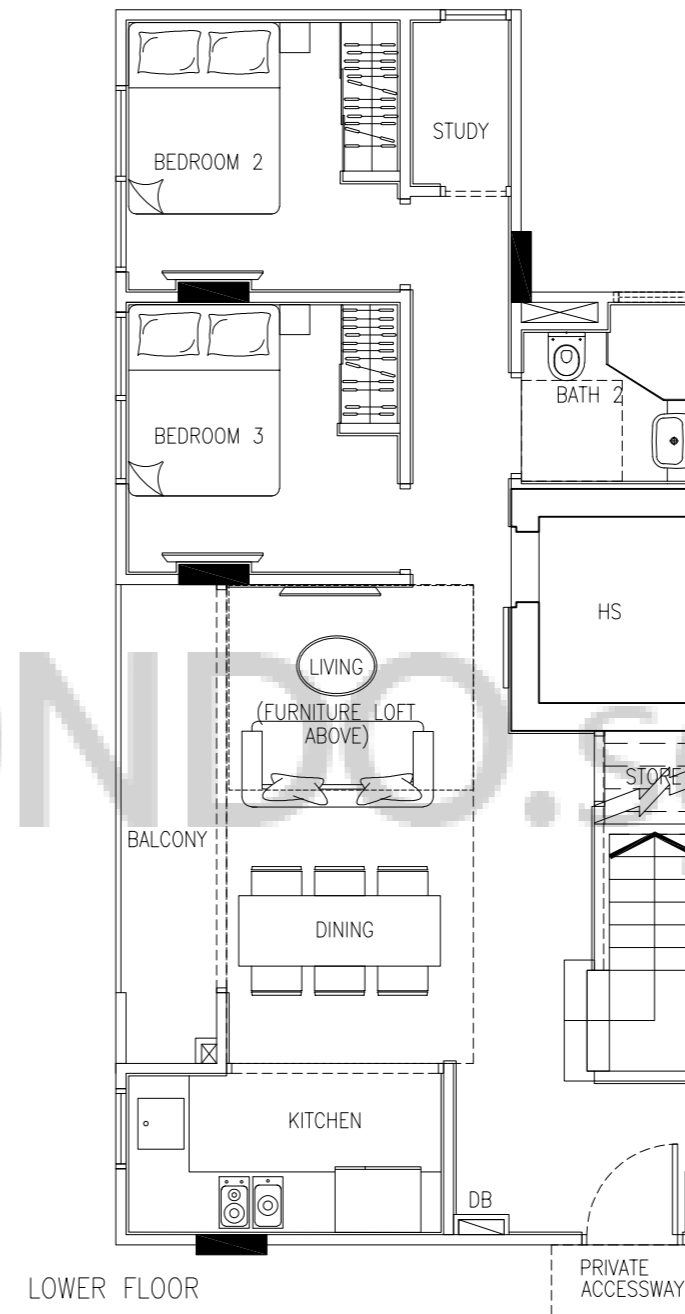
Plans are not to scale and subject to any amendment as may be approved by relevant authorities. All areas are approximate and are subject to final survey.



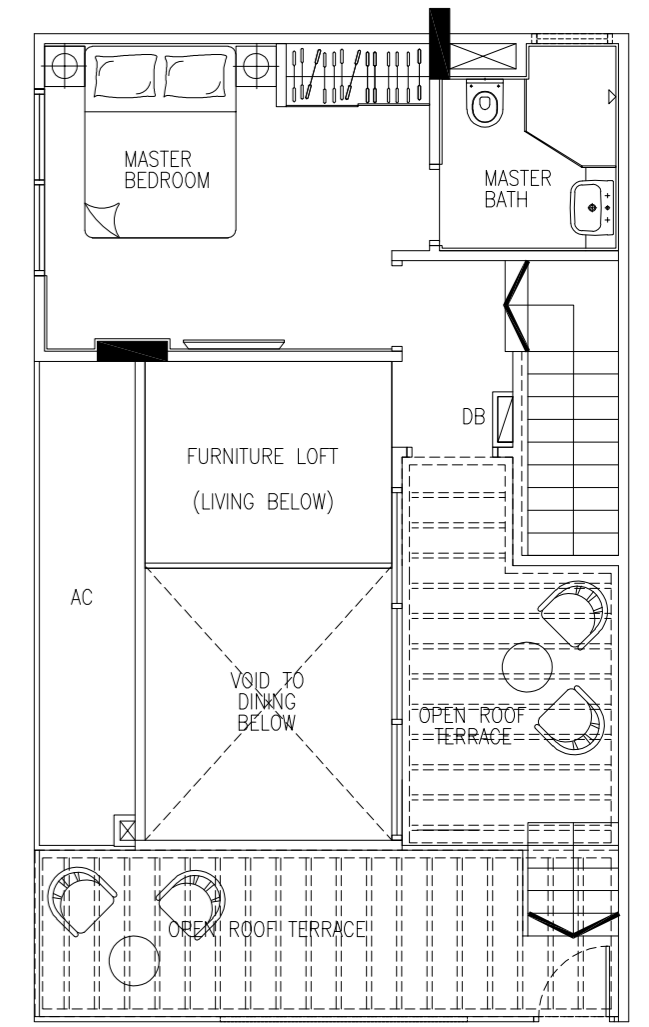
TYPE 4 (3-Bedroom Penthouse)

122 sqm / 1313 sqft

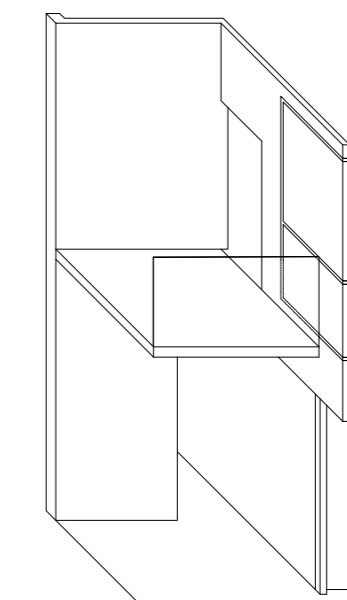
#05-05 #05-06



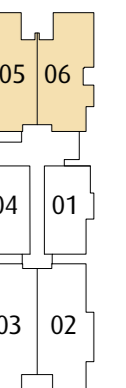
LOWER FLOOR



UPPER FLOOR



Furniture loft layout for Study or Entertainment area



Plans are not to scale and subject to any amendment as may be approved by relevant authorities. All areas are approximate and are subject to final survey.

