

SHOP 1
42 sq m / 452 sq ft
#01-01



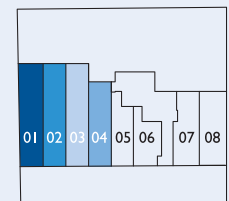
SHOP 2
40 sq m / 431 sq ft
#01-02



SHOP 3
40 sq m / 431 sq ft
#01-03



SHOP 4
33 sq m / 355 sq ft
#01-04



Note: Unit area includes AC ledge and/or AC accessory lot and/or void and/or roof terrace where applicable. All plans are subject to amendments as approved by the relevant authorities.

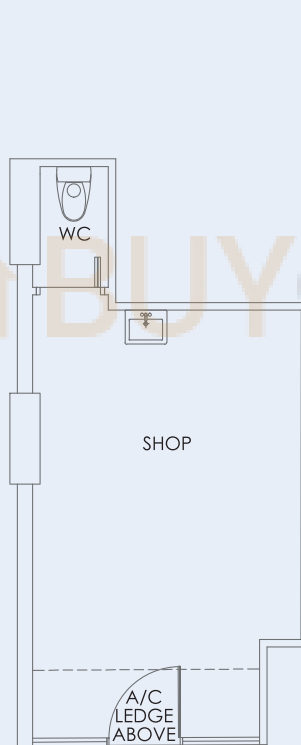


1ST STOREY PLAN

SHOP 5
25 sq m / 269 sq ft
#01-05



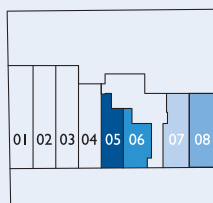
SHOP 6
23 sq m / 248 sq ft
#01-06



SHOP 7
31 sq m / 334 sq ft
#01-07



SHOP 8
34 sq m / 366 sq ft
#01-08

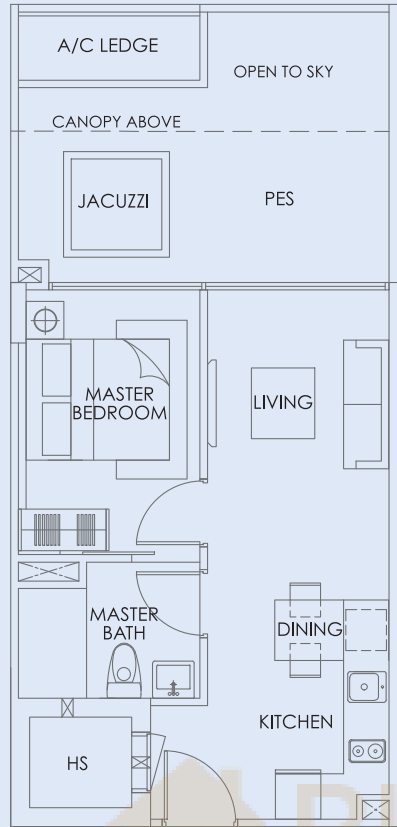


N
1ST STOREY PLAN

Note: Unit area includes AC ledge and/or AC accessory lot and/or void and/or roof terrace where applicable. All plans are subject to amendments as approved by the relevant authorities.

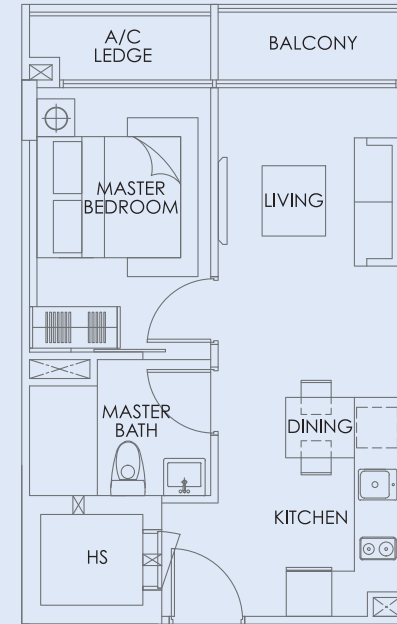
TYPE AI-1
1 bedroom
54 sq m / 581 sq ft

#02-01



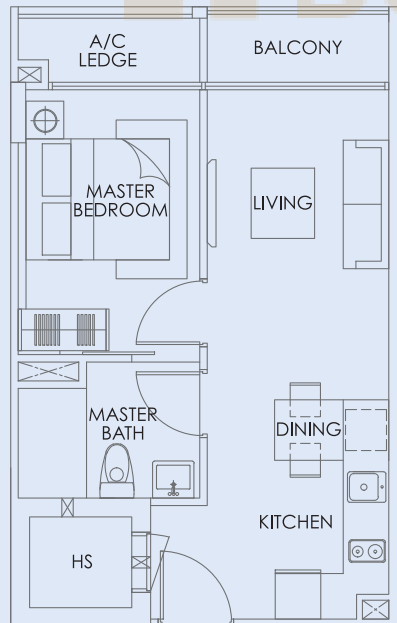
TYPE AIa
1 bedroom
40 sq m / 431 sq ft

#03-01

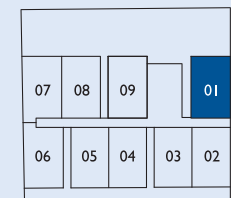


TYPE AI
1 bedroom
40 sq m / 431 sq ft

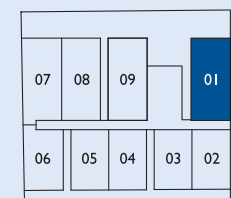
#04-01 to #05-01



BUYCONDO.sg



3RD STOREY PLAN
TO 6TH STOREY PLAN

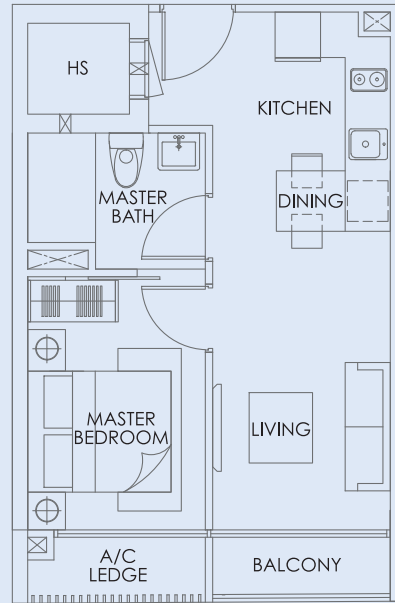


2ND STOREY PLAN

Note: Unit area includes AC ledge and/or AC accessory lot and/or void and/or roof terrace where applicable. All plans are subject to amendments as approved by the relevant authorities.

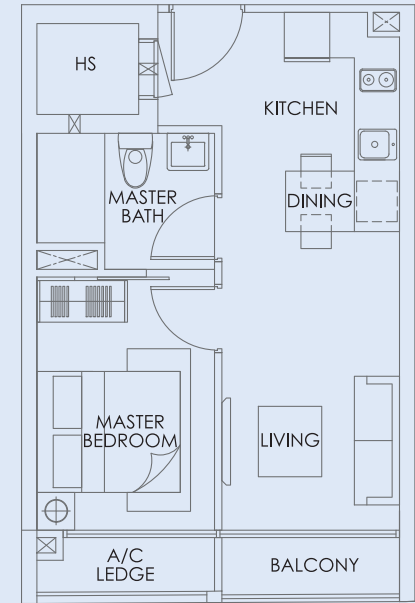
TYPE A2
1 bedroom
38 sq m / 409 sq ft

#02-02



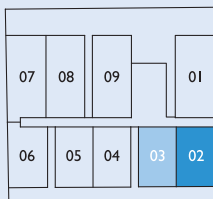
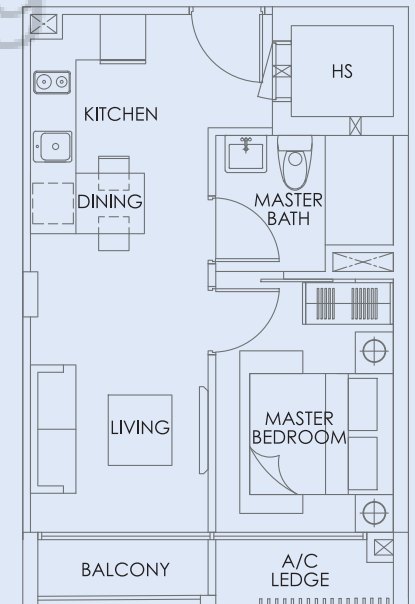
TYPE A2-I
1 bedroom
38 sq m / 409 sq ft

#03-02 to #05-02



TYPE A3
1 bedroom
38 sq m / 409 sq ft

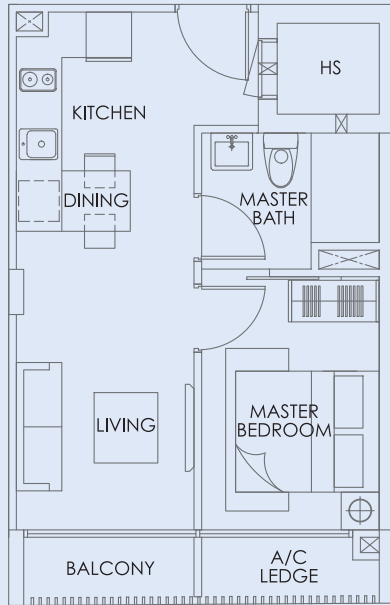
#02-03 to #04-03



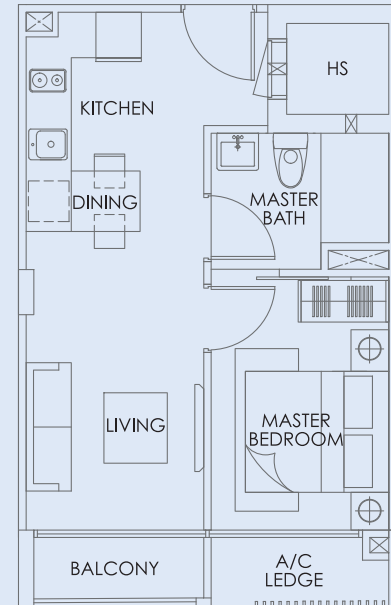
2ND STOREY PLAN
TO 5TH STOREY PLAN

Note: Unit area includes AC ledge and/or AC accessory lot and/or void and/or roof terrace where applicable. All plans are subject to amendments as approved by the relevant authorities.

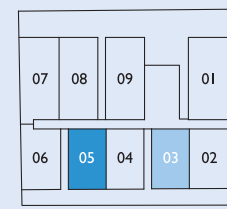
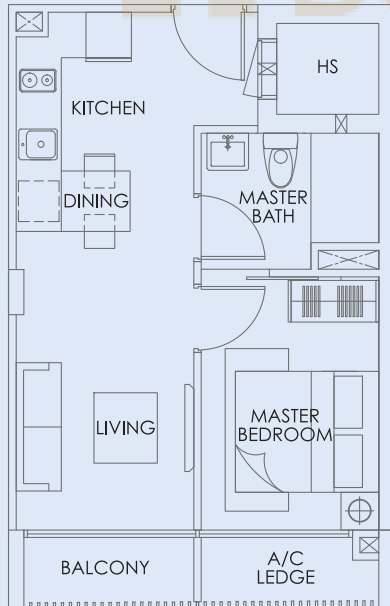
TYPE A3-I
 1 bedroom
 38 sq m / 409 sq ft
 #05-03



TYPE A3a
 1 bedroom
 38 sq m / 409 sq ft
 #02-05 to #04-05



TYPE A3a-I
 1 bedroom
 38 sq m / 409 sq ft
 #05-05

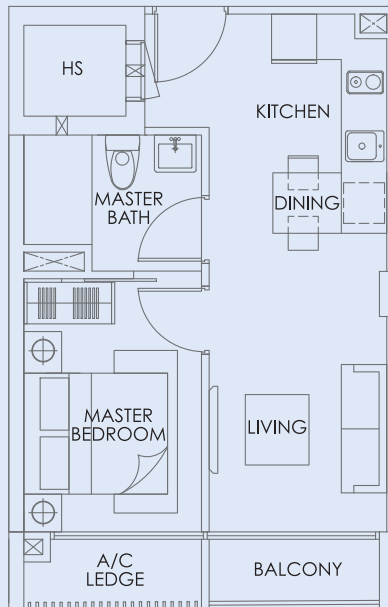


Note: Unit area includes AC ledge and/or AC accessory lot and/or void and/or roof terrace where applicable. All plans are subject to amendments as approved by the relevant authorities.

N 2ND STOREY PLAN TO 5TH STOREY PLAN

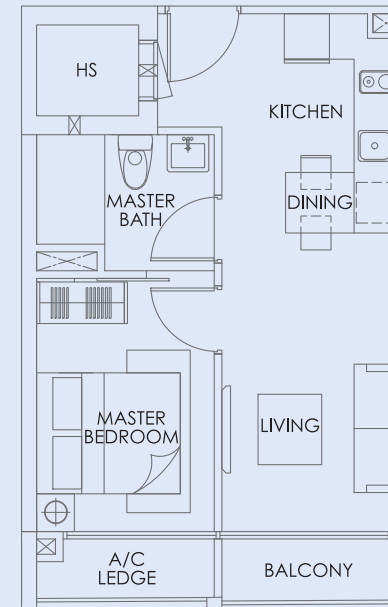
TYPE A4
1 bedroom
38 sq m / 409 sq ft

#02-04



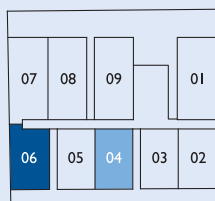
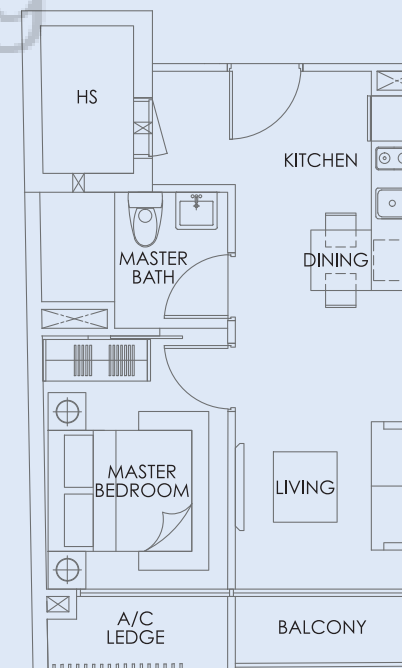
TYPE A4-I
1 bedroom
38 sq m / 409 sq ft

#03-04 to #05-04



TYPE A5
1 bedroom
41 sq m / 441 sq ft

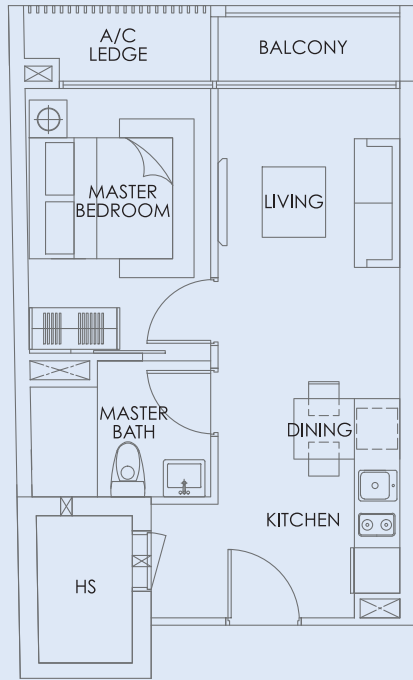
#02-06 to #05-06



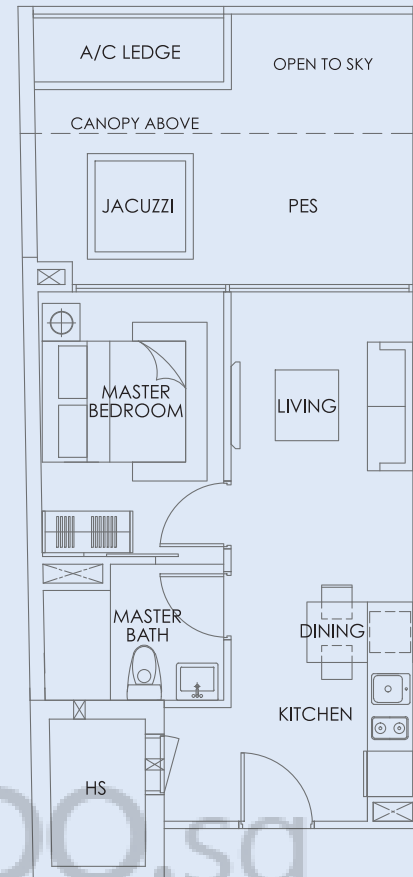
2ND STOREY PLAN
TO 6TH STOREY PLAN

Note: Unit area includes AC ledge and/or AC accessory lot and/or void and/or roof terrace where applicable. All plans are subject to amendments as approved by the relevant authorities.

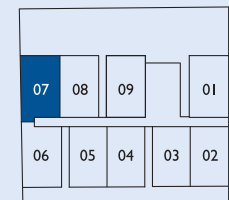
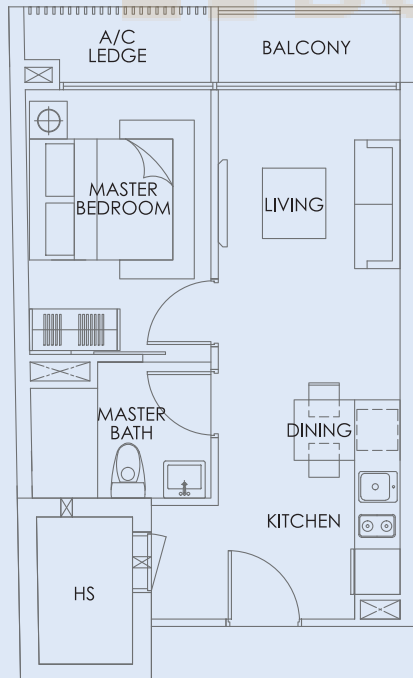
TYPE A6
 1 bedroom
 42 sq m / 452 sq ft
 #03-07 to #05-07



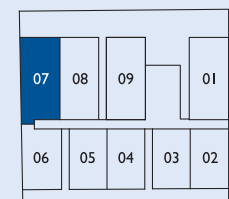
TYPE A6-2
 1 bedroom
 56 sq m / 603 sq ft
 #02-07



TYPE A6-1
 1 bedroom
 42 sq m / 452 sq ft
 #06-07



3RD STOREY PLAN
 TO 6TH STOREY PLAN

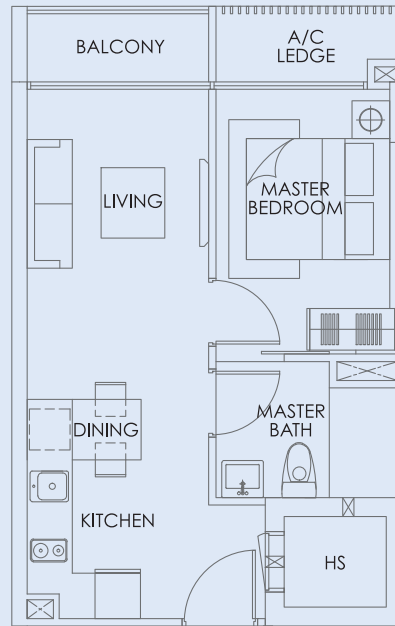


2ND STOREY PLAN

Note: Unit area includes AC ledge and/or AC accessory lot and/or void and/or roof terrace where applicable. All plans are subject to amendments as approved by the relevant authorities.

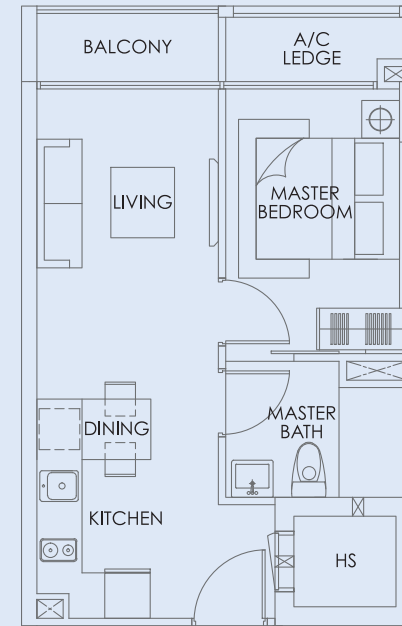
TYPE A7
 1 bedroom
 40 sq m / 431 sq ft

#03-08



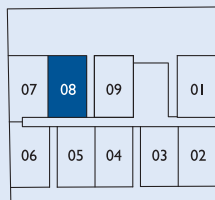
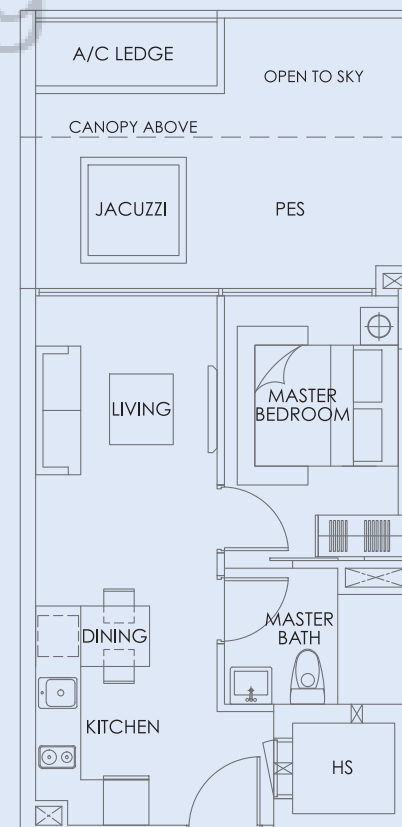
TYPE A7-1
 1 bedroom
 40 sq m / 431 sq ft

#04-08 to #06-08

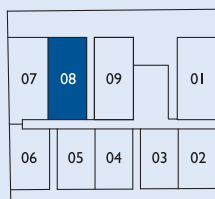


TYPE A7-2
 1 bedroom
 54 sq m / 581 sq ft

#02-08



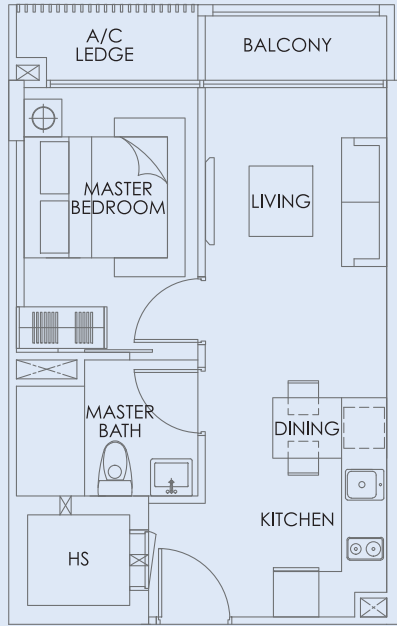
3RD STOREY PLAN
 TO 6TH STOREY PLAN



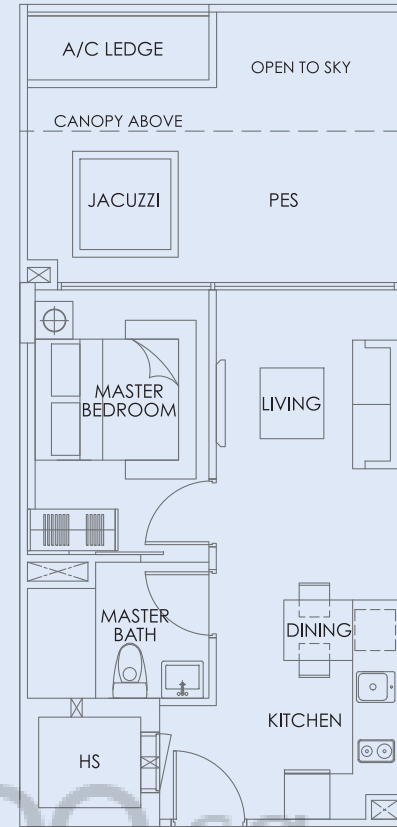
2ND STOREY PLAN

Note: Unit area includes AC ledge and/or AC accessory lot and/or void and/or roof terrace where applicable. All plans are subject to amendments as approved by the relevant authorities.

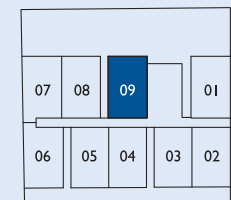
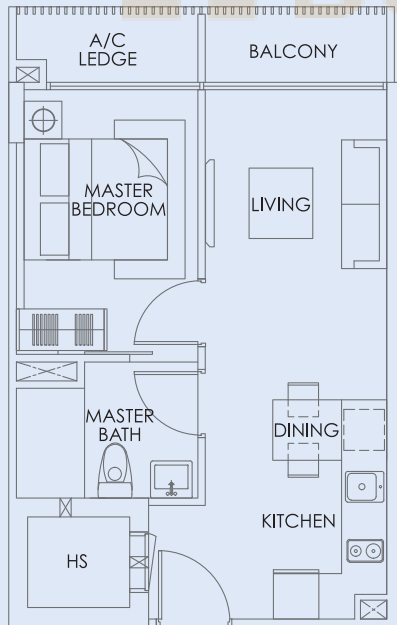
TYPE A8
 1 bedroom
 40 sq m / 431 sq ft
 #03-09 to #05-09



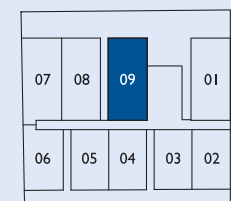
TYPE A8-2
 1 bedroom
 54 sq m / 581 sq ft
 #02-09



TYPE A8-1
 1 bedroom
 40 sq m / 431 sq ft
 #06-09



3RD STOREY PLAN
 TO 6TH STOREY PLAN

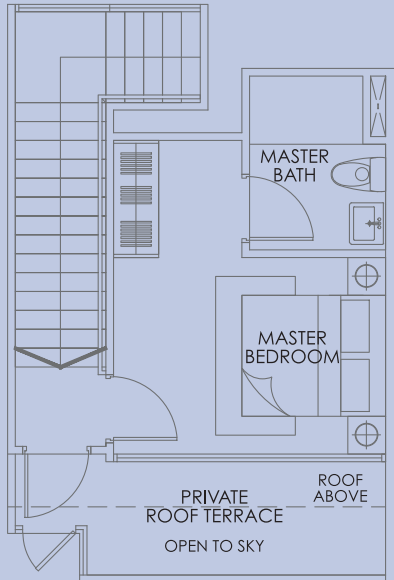


2ND STOREY PLAN

Note: Unit area includes AC ledge and/or AC accessory lot and/or void and/or roof terrace where applicable. All plans are subject to amendments as approved by the relevant authorities.

TYPE PH-1
 1 bedroom
 75 sq m / 807 sq ft

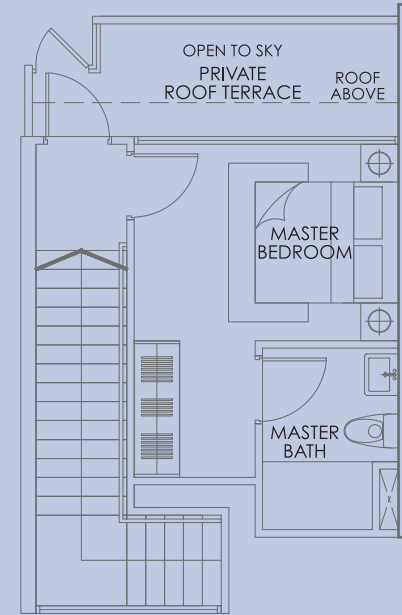
#06-01



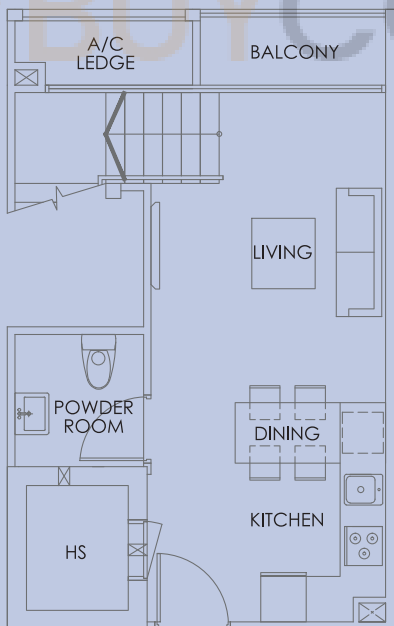
UPPER STOREY

TYPE PH-2
 1 bedroom
 75 sq m / 807 sq ft

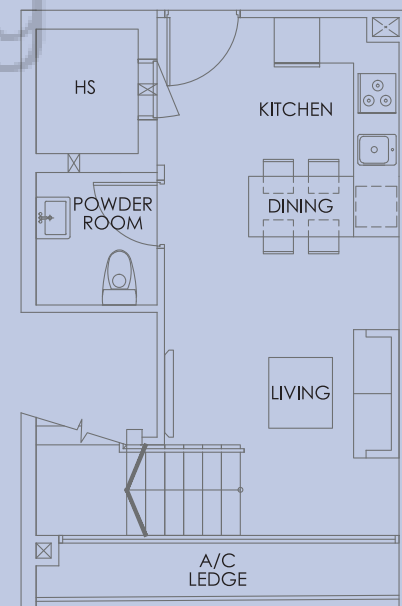
#06-02



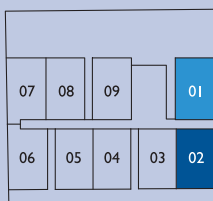
UPPER STOREY



LOWER STOREY



LOWER STOREY

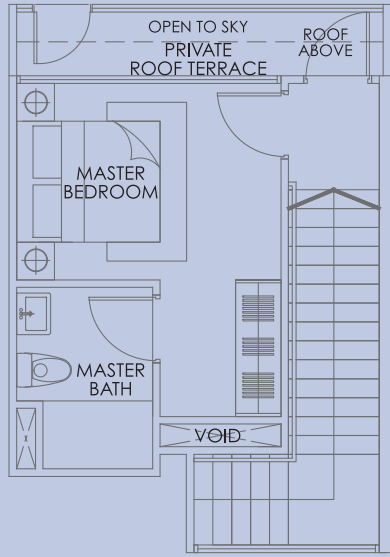


6TH STOREY PLAN

Note: Unit area includes AC ledge and/or AC accessory lot and/or void and/or roof terrace where applicable. All plans are subject to amendments as approved by the relevant authorities.

TYPE PH-3
 1 bedroom
 72 sq m / 775 sq ft

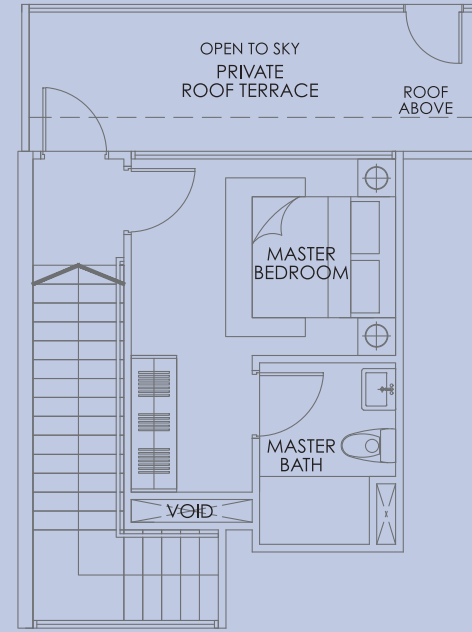
#06-03



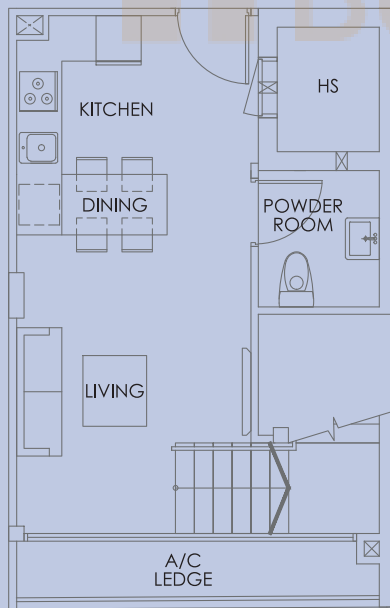
UPPER STOREY

TYPE PH-4
 1 bedroom
 79 sq m / 850 sq ft

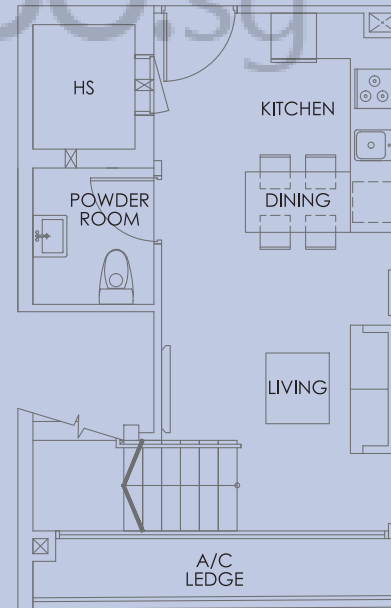
#06-04



UPPER STOREY



LOWER STOREY



LOWER STOREY



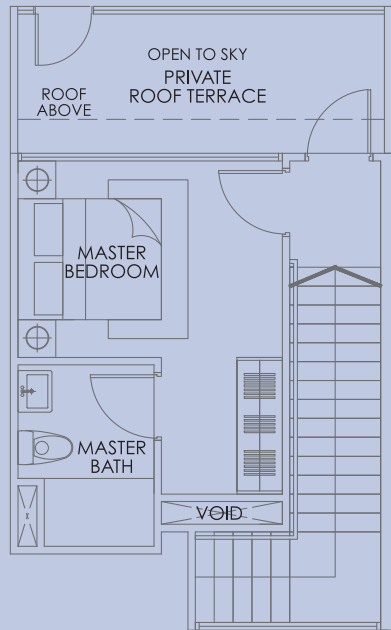
07	08	09	01
06	05	04	03

Note: Unit area includes AC ledge and/or AC accessory lot and/or void and/or roof terrace where applicable. All plans are subject to amendments as approved by the relevant authorities.



TYPE PH-5
1 bedroom
77 sq m / 829 sq ft

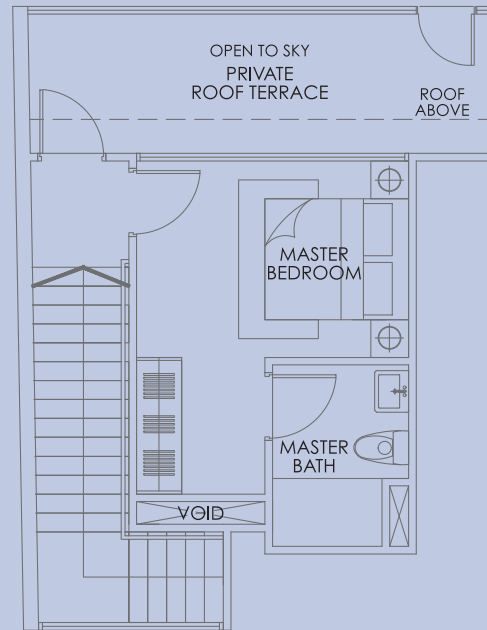
#06-05



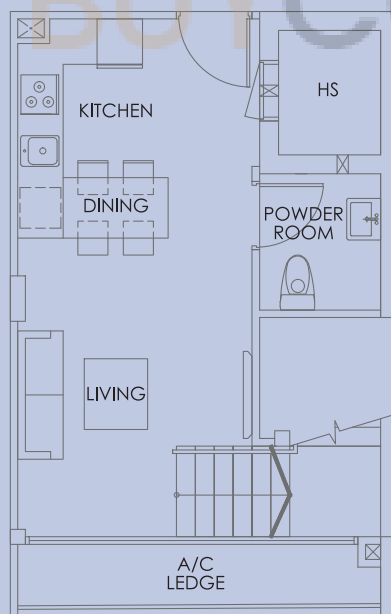
UPPER STOREY

TYPE PH-6
1 bedroom
82 sq m / 883 sq ft

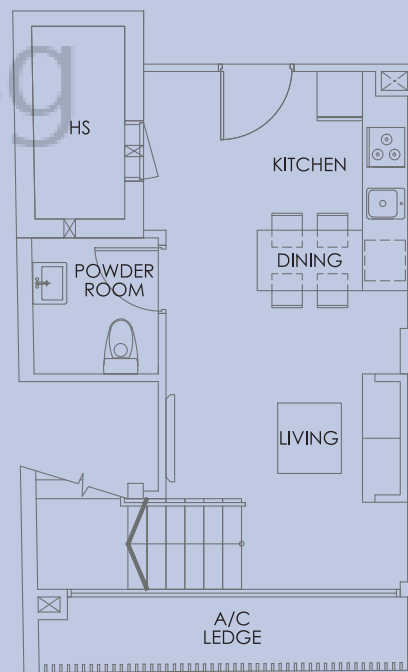
#06-06



UPPER STOREY



LOWER STOREY



LOWER STOREY



6TH STOREY PLAN

Note: Unit area includes AC ledge and/or AC accessory lot and/or void and/or roof terrace where applicable. All plans are subject to amendments as approved by the relevant authorities.