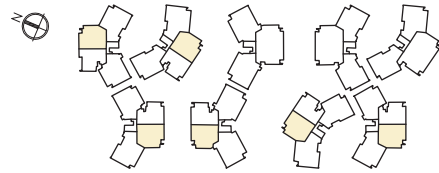
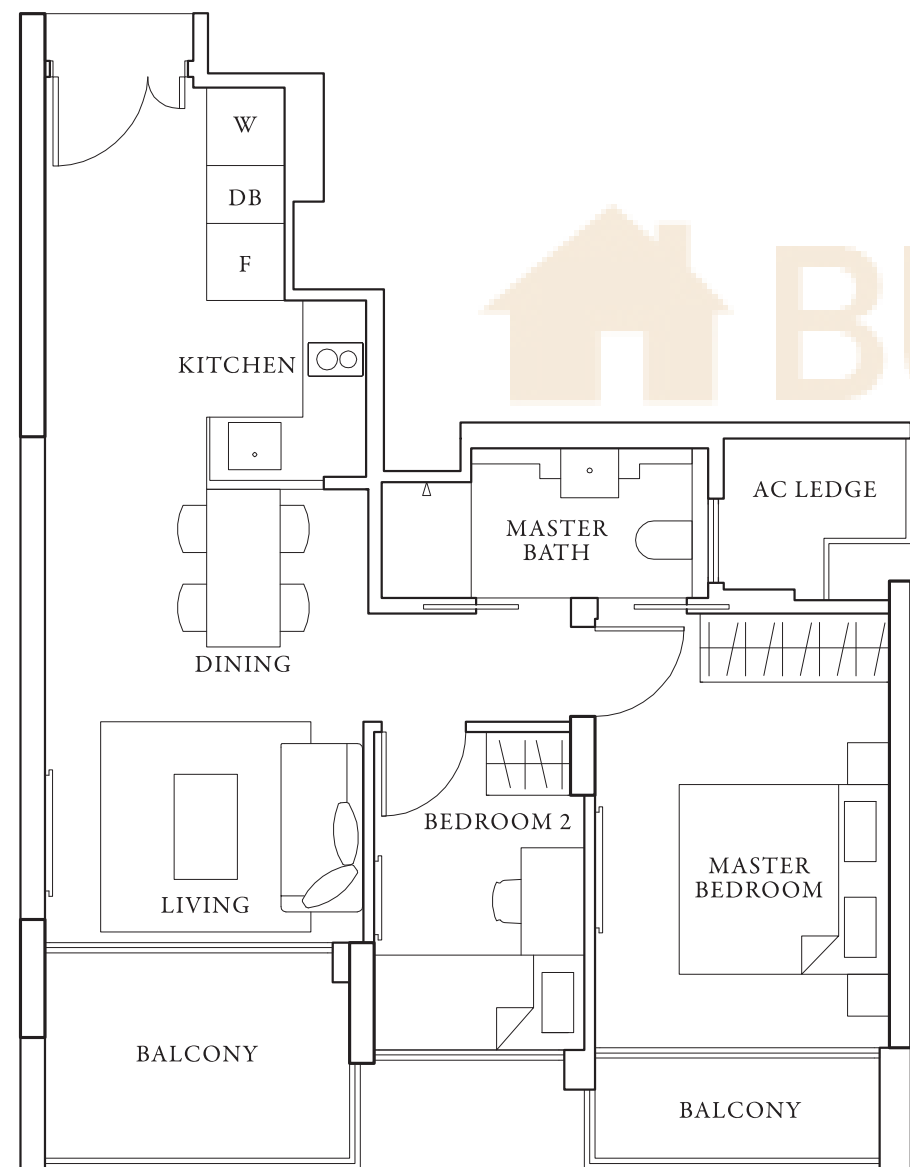


## 2 BEDROOM

A1



Area 65 sqm / 700 sqft

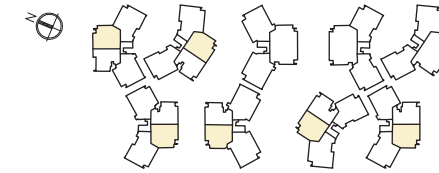


#02-02 to #04-02 [mirror] #02-10 to #04-10 [mirror] #02-15 to #04-15 #02-21 to #04-21  
#02-37 to #04-37 #02-46 to #04-46 [mirror]

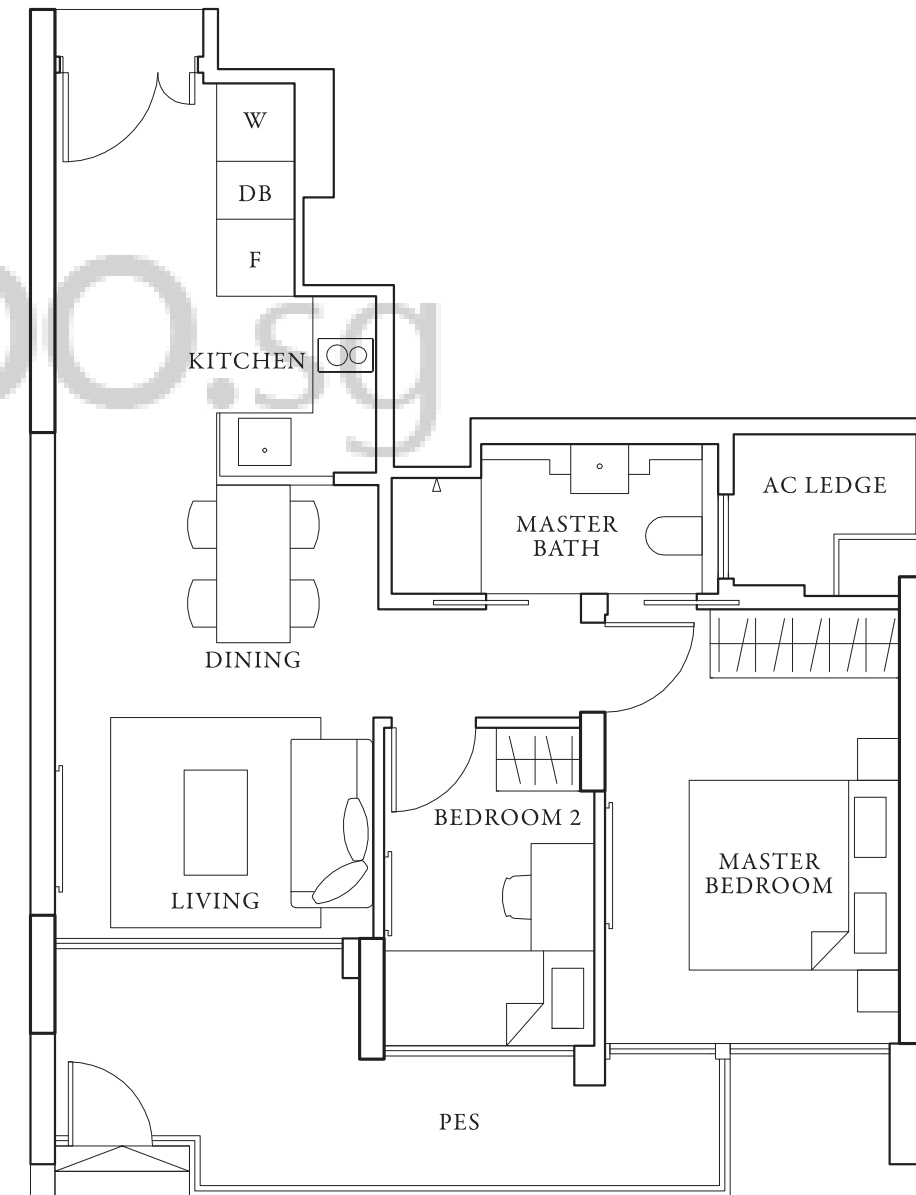
The plans are subject to change as may be required or approved by the relevant authorities. Areas are estimates only and are subject to final survey. Plans are not drawn to scale and do not form part of the contract.

## 2 BEDROOM

A1G



Area 68 sqm / 732 sqft

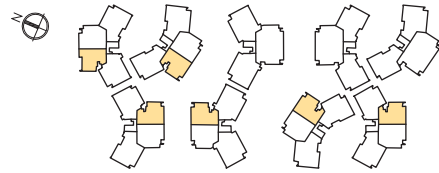


#01-02 [mirror] #01-10 [mirror] #01-15 #01-21 #01-37 #01-46 [mirror]

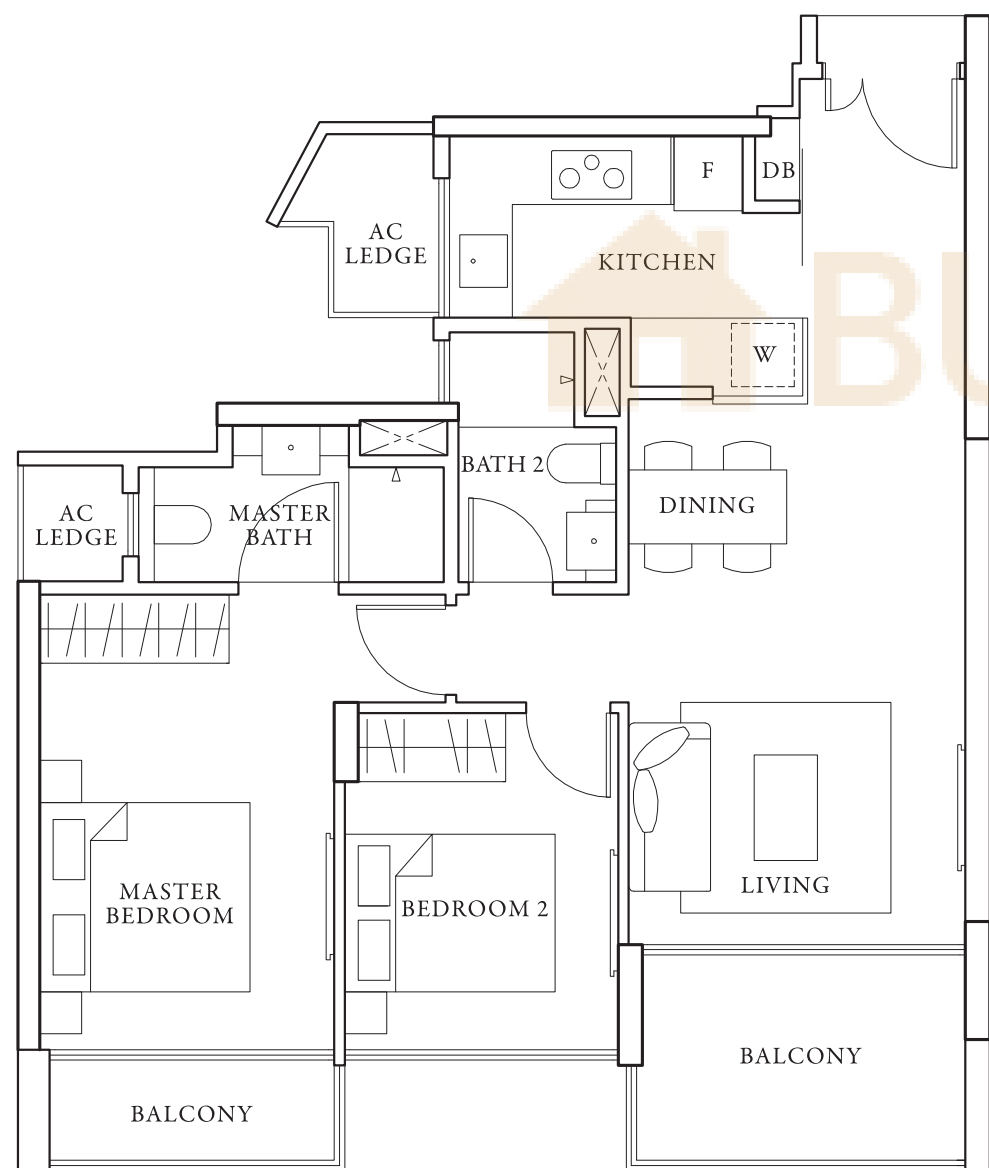
The plans are subject to change as may be required or approved by the relevant authorities. Areas are estimates only and are subject to final survey. Plans are not drawn to scale and do not form part of the contract.

# 2 BEDROOM PREMIUM

## A2



Area 78 sqm / 840 sqft

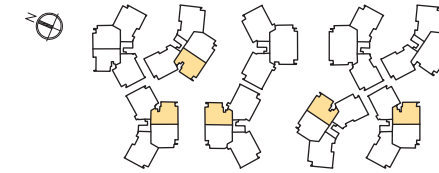


#02-01 to #04-01 [mirror] #02-09 to #04-09 [mirror] #02-16 to #04-16 #02-22 to #04-22  
#02-38 to #04-38 #02-45 to #04-45 [mirror]

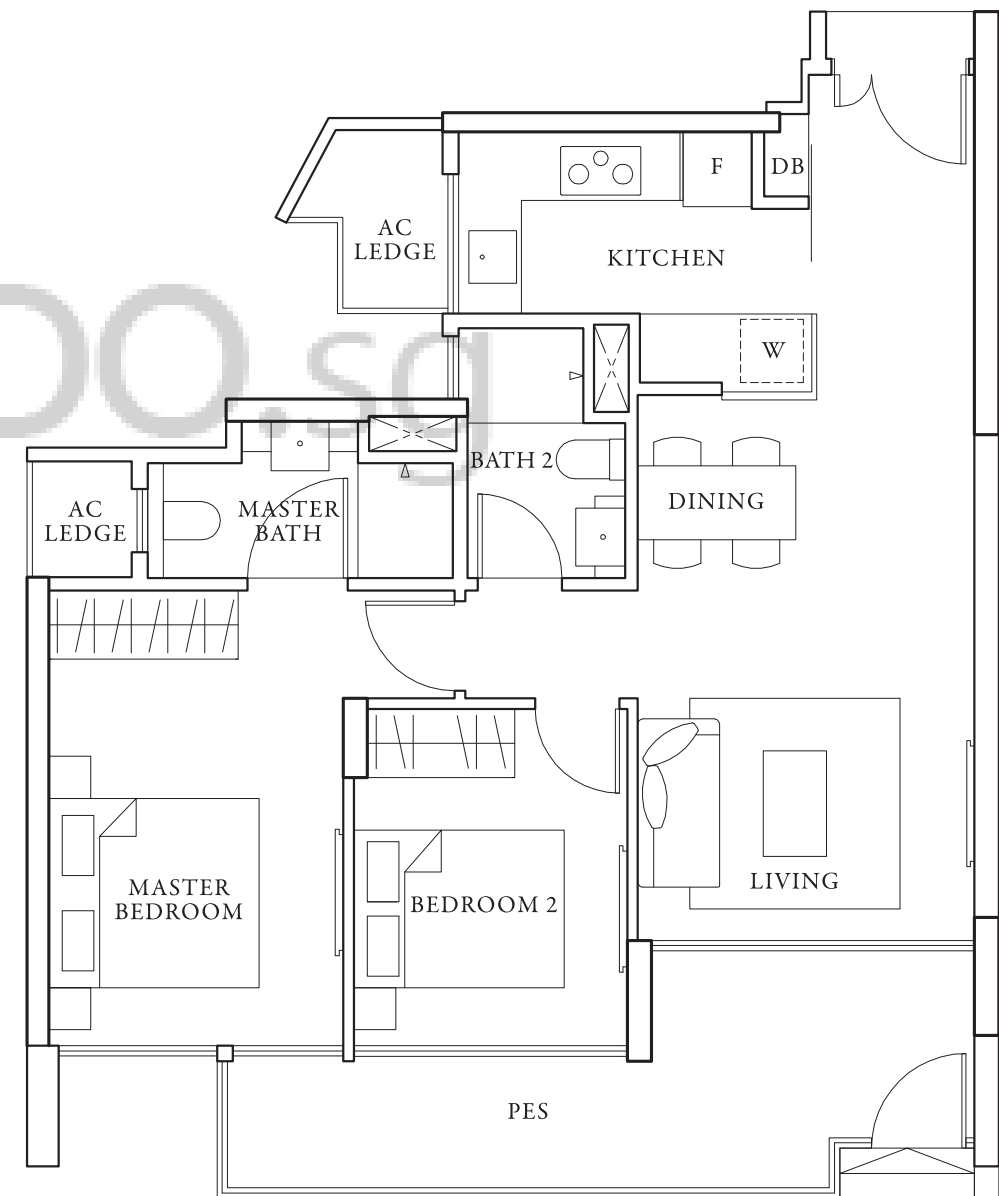
The plans are subject to change as may be required or approved by the relevant authorities. Areas are estimates only and are subject to final survey. Plans are not drawn to scale and do not form part of the contract.

# 2 BEDROOM PREMIUM

## A2G



Area 81 sqm / 872 sqft

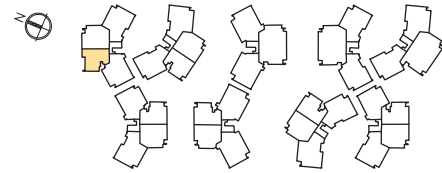


#01-09 [mirror] #01-16 #01-22 #01-38 #01-45 [mirror]

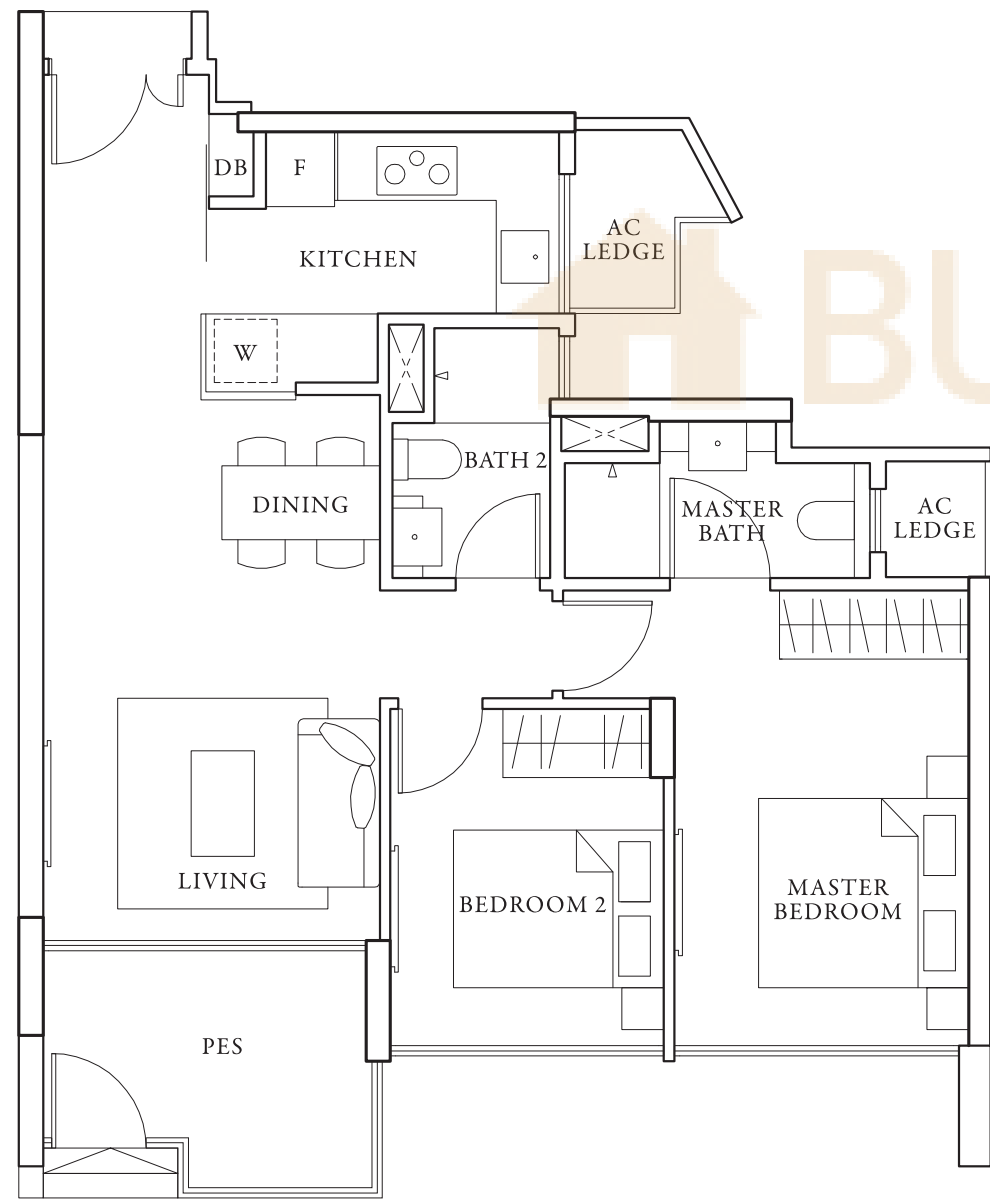
The plans are subject to change as may be required or approved by the relevant authorities. Areas are estimates only and are subject to final survey. Plans are not drawn to scale and do not form part of the contract.

## 2 BEDROOM PREMIUM

### A2Ga



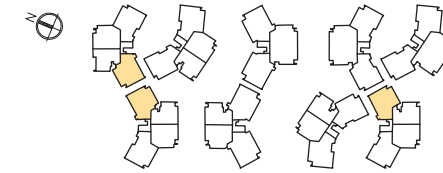
Area 76 sqm / 818 sqft



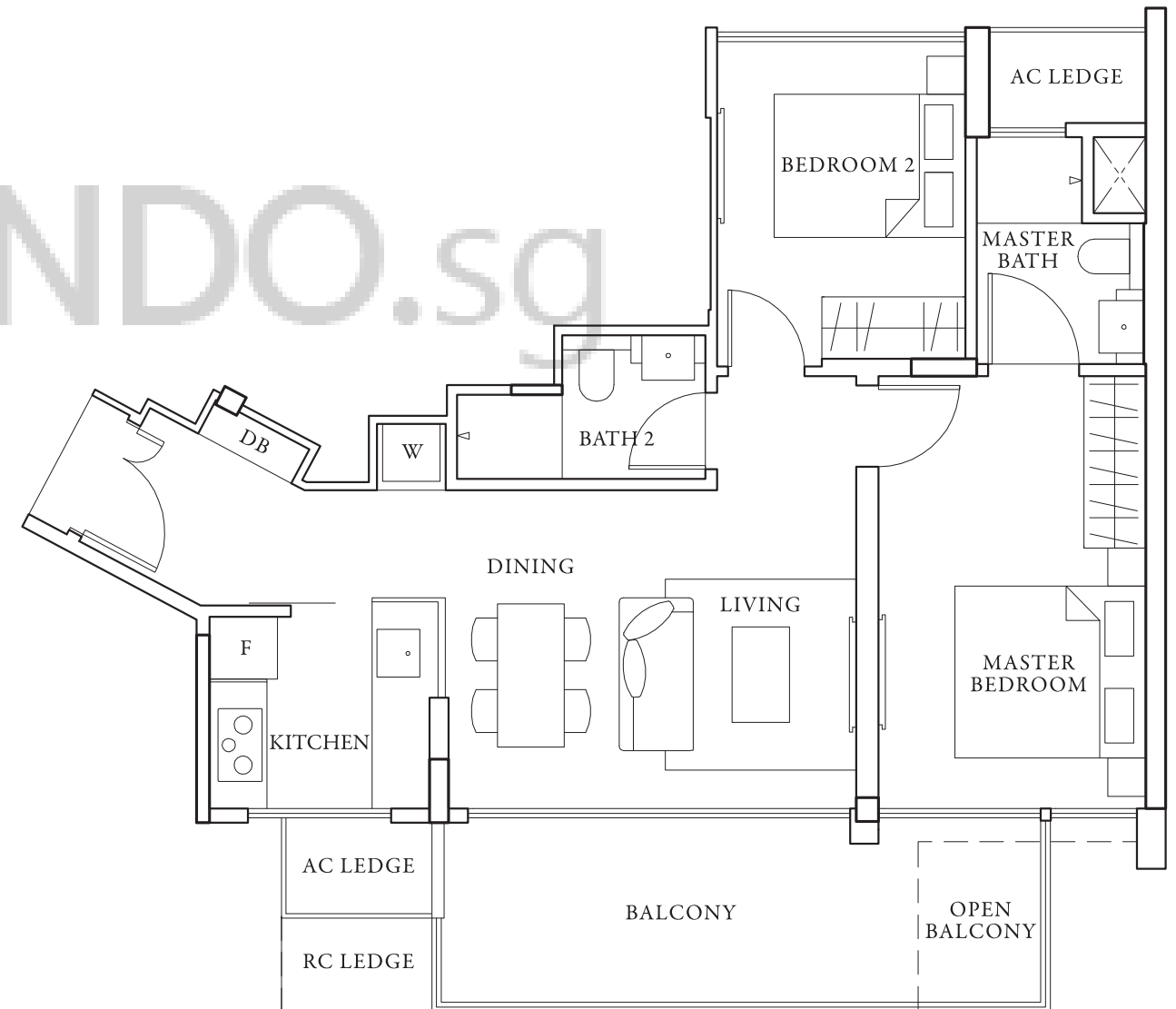
#01-01

## 2 BEDROOM PREMIUM

### A3



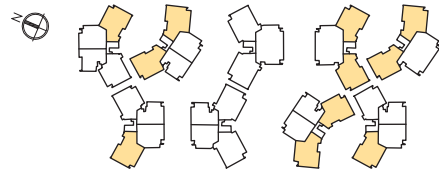
Area 78 sqm / 840 sqft



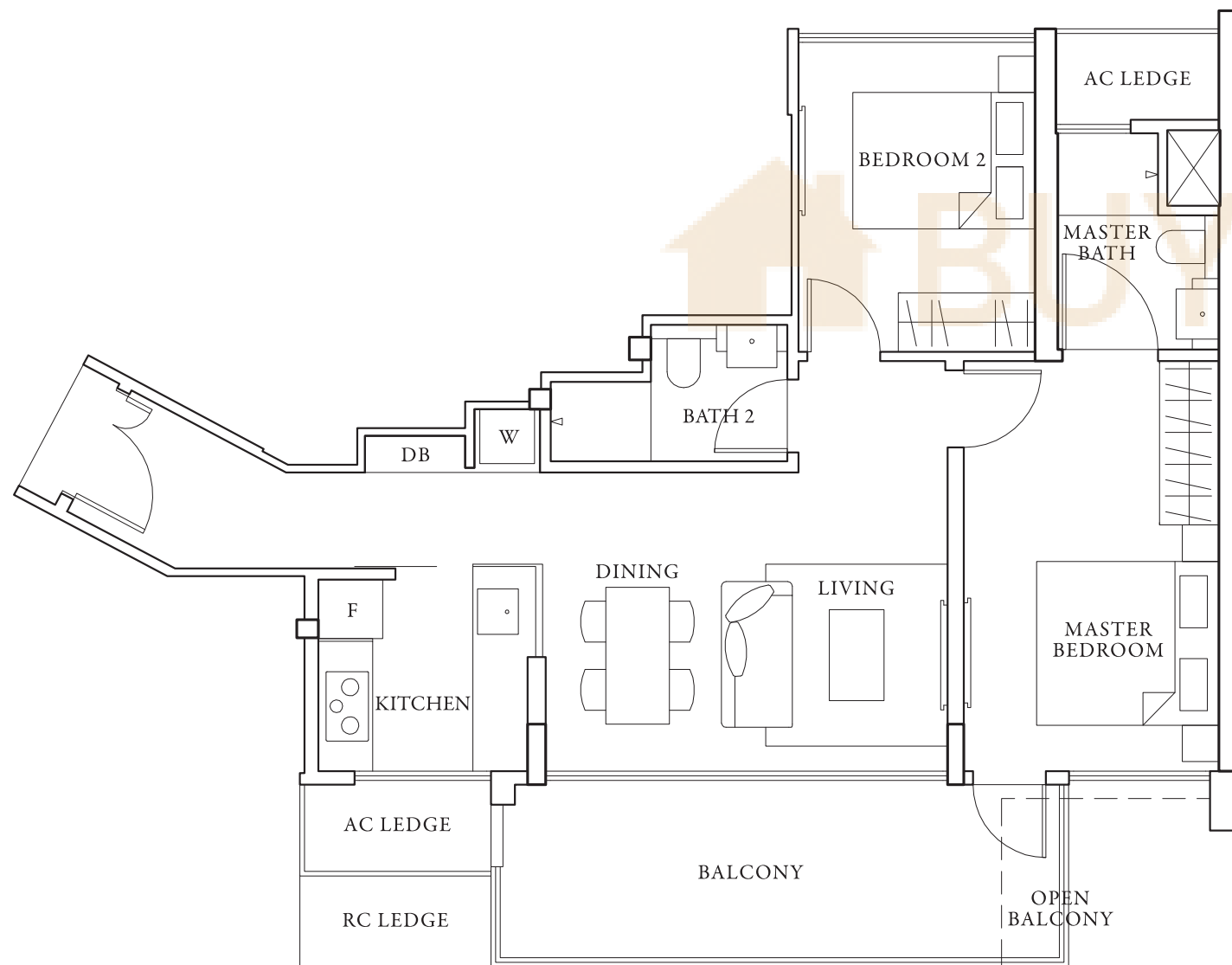
#05-06 #05-08 #05-44

## 2 BEDROOM PREMIUM

A4



Area 81 sqm / 872 sqft



*A Housekeeper's Guide to*

## T H E M A R B L E F L O O R

*Universally loved for its elegance and its luxury, marble is also a soft and absorbent material that can be prone to staining and etching. To keep your precious stone gleaming underfoot, know these essential dos and don'ts.*

#05-03 [mirror] #05-11 [mirror] #05-20 #05-23 [mirror] #05-32 #05-35 [mirror]  
#05-39 [mirror] #05-42 #05-47 [mirror] #05-50 #05-53 [mirror]

The plans are subject to change as may be required or approved by the relevant authorities. Areas are estimates only and are subject to final survey. Plans are not drawn to scale and do not form part of the contract.



1

*Vacuum or sweep the floor at least once or twice a week.*

This helps to eliminate sand and grit — the biggest enemies of marble surfaces. A doormat at the entrance is also nifty for capturing dirt.

2

*Use only neutral or gentle cleaners mixed properly with water.*

Marble is sensitive to any acid or high alkaline chemicals including ammonia, alcohol, and vinegar.

3

*Clean and dry in sections.*

Wet cleaning cloth (or mop), wring, work on a manageable area of floor and immediately wipe dry with another soft cloth. Continue on to the next section of floor until the entire floor is done, changing out any dirtied water in the process.

4

*Clean up spillages immediately.*

Marble is porous and can easily be discoloured by food, ink, and even water. Wipe up any spills promptly with a soft cloth, dipped before in a mild cleaning solution if necessary.

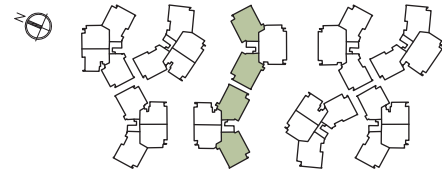
5

*Invest in regular care.*

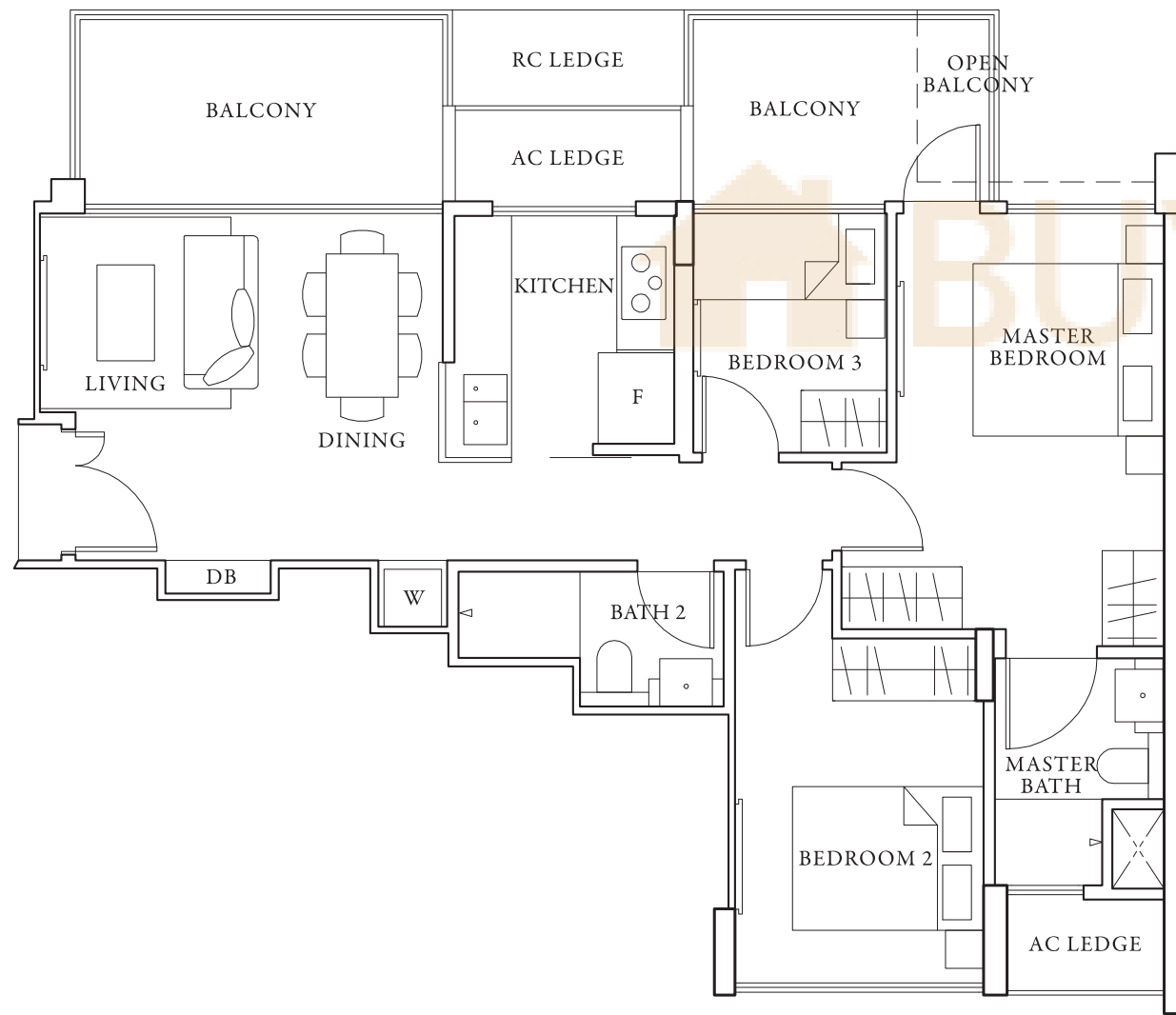
A protective, premium sealer is the first and most important safeguard against stains and moisture. A yearly resealing may be required especially when the floor is exposed to medium to heavy traffic.

### 3 BEDROOM

#### B1



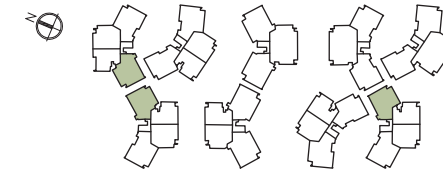
Area 87 sqm / 936 sqft



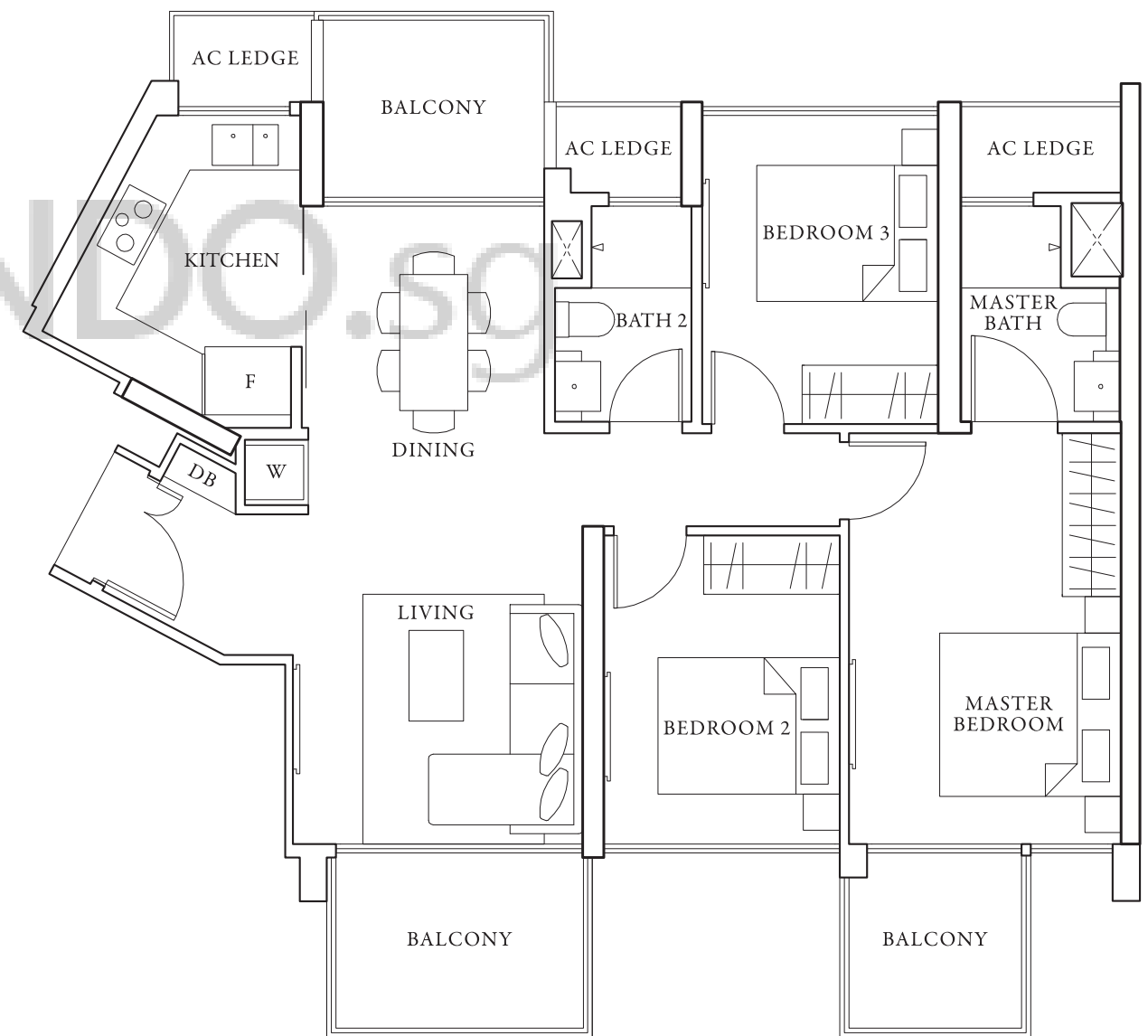
#05-13 #05-18 [mirror] #05-25 #05-30 [mirror]

### 3 BEDROOM

#### B2



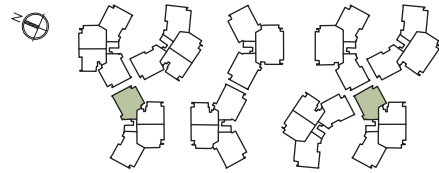
Area 101 sqm / 1087 sqft



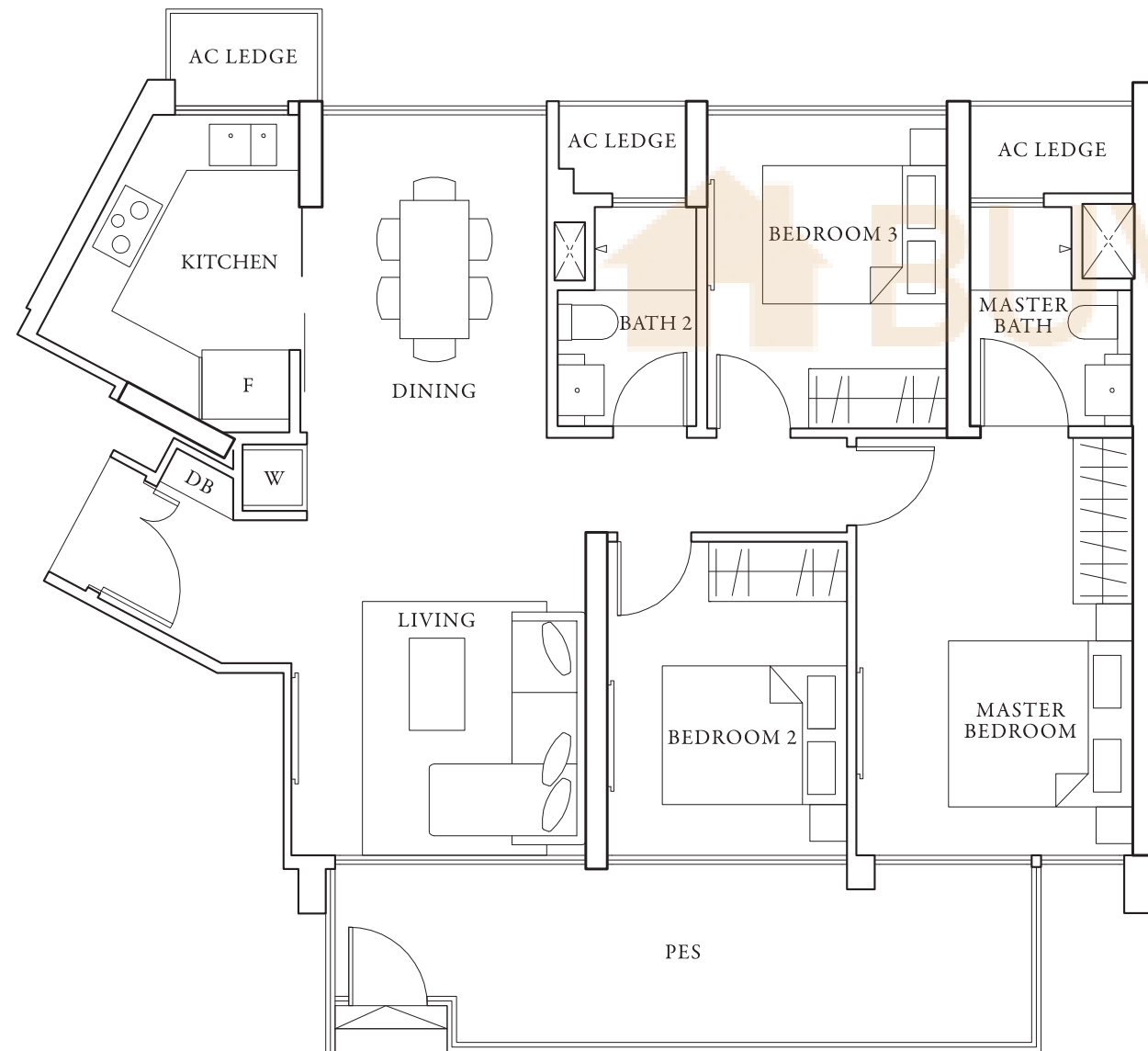
#02-05 to #04-05 #02-08 to #04-08 #02-43 to #04-43

### 3 BEDROOM

#### B2G



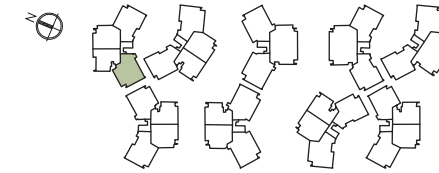
Area 104 sqm / 1119 sqft



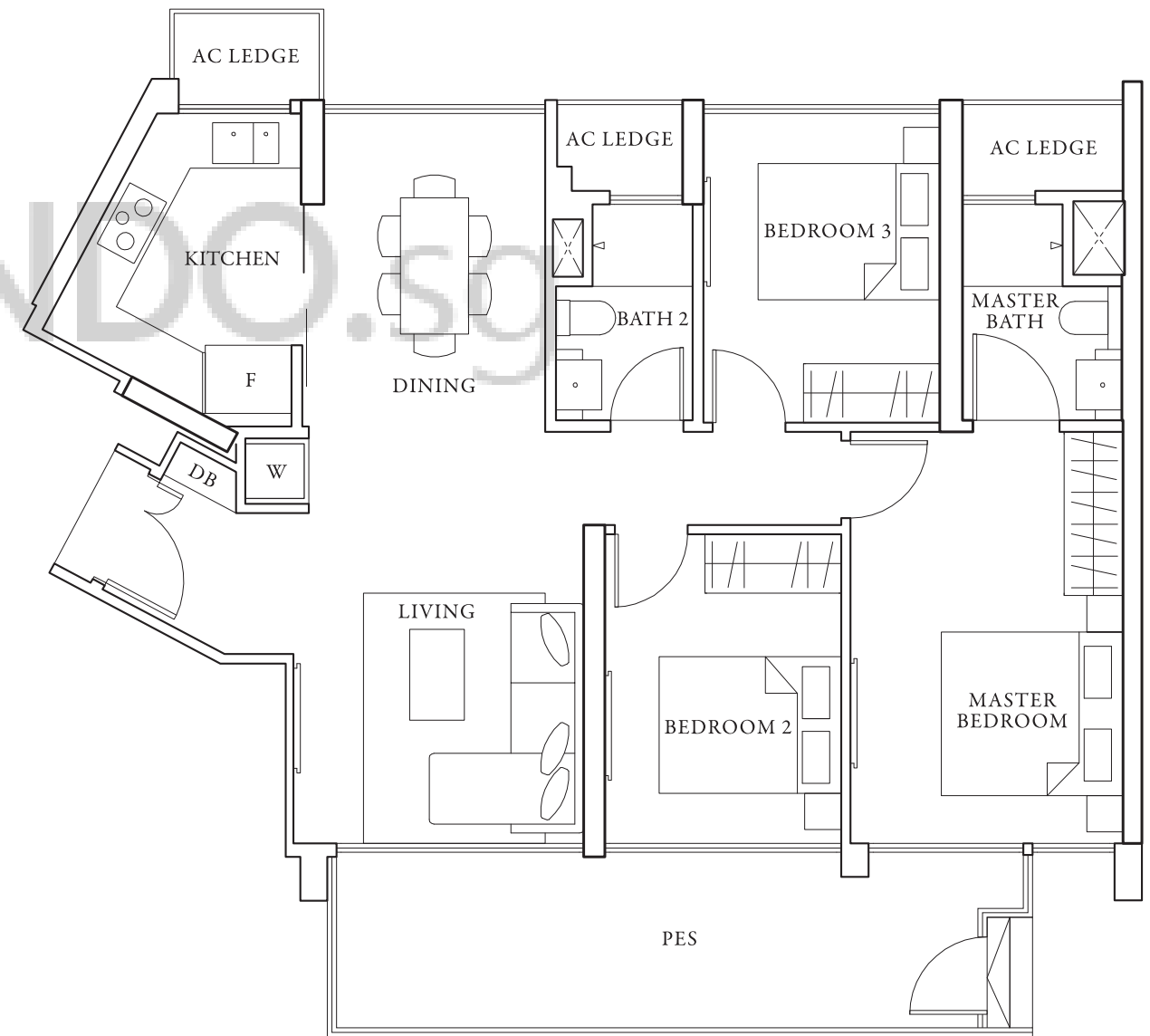
#01-08 #01-43

### 3 BEDROOM

#### B2Ga



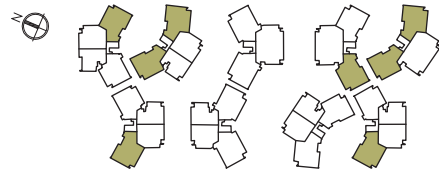
Area 104 sqm / 1119 sqft



#01-05

### 3 BEDROOM PREMIUM

B3



Area 110 sqm / 1184 sqft

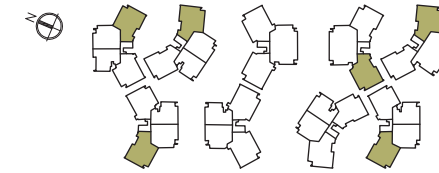


#02-03 to #04-03 [mirror] #02-11 to #04-11 [mirror] #02-20 to #04-20 #02-23 to #04-23 [mirror]  
#02-31 to #04-31 #02-48 to #04-48 [mirror] #02-50 to #04-50 #02-54 to #04-54 [mirror]

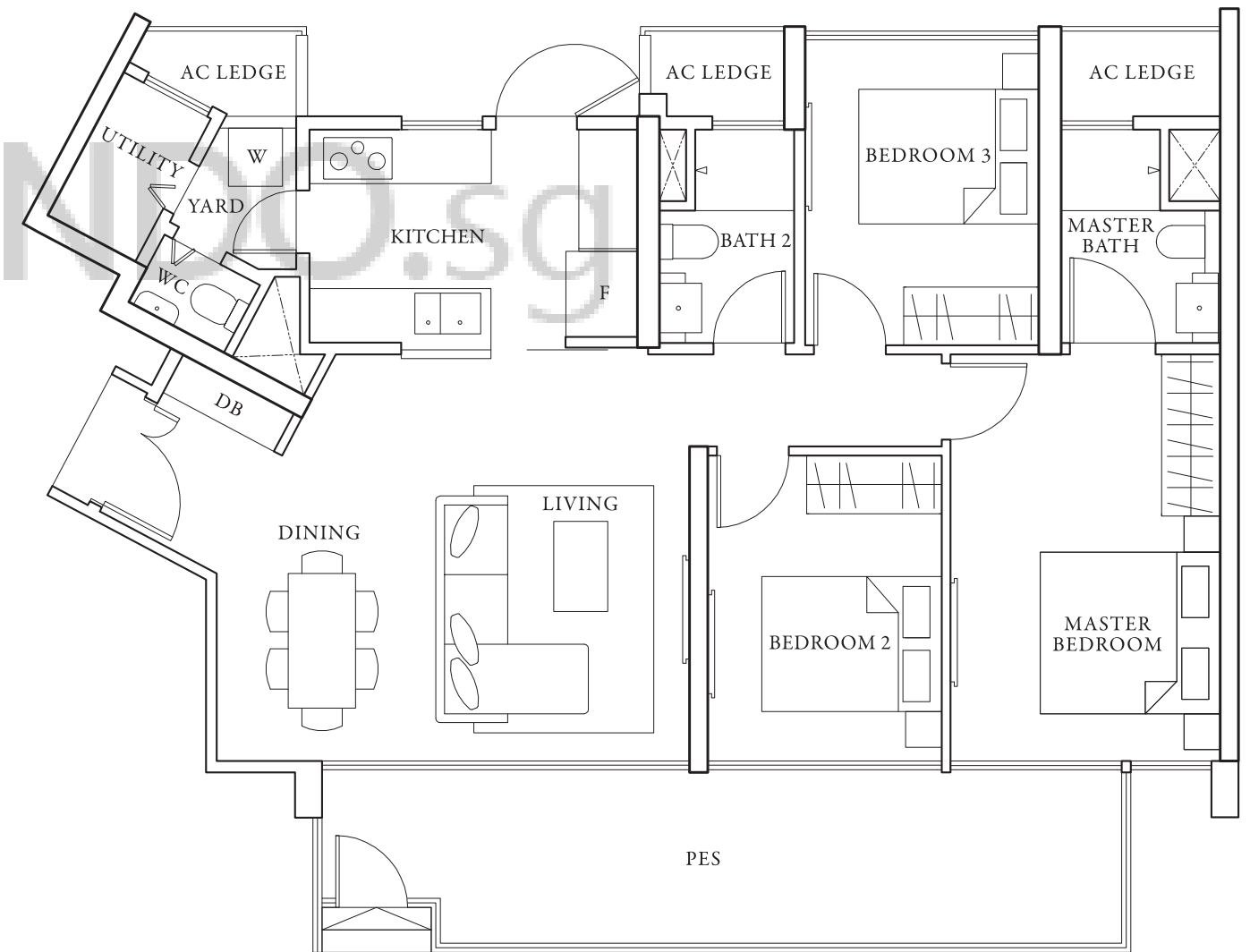
The plans are subject to change as may be required or approved by the relevant authorities. Areas are estimates only and are subject to final survey. Plans are not drawn to scale and do not form part of the contract.

### 3 BEDROOM PREMIUM

B3G



Area 113 sqm / 1216 sqft



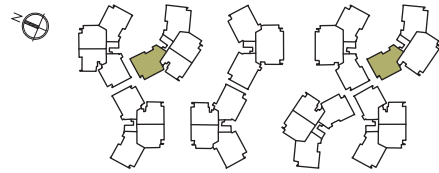
#01-03 [mirror] #01-11 [mirror] #01-20 #01-31 #01-48 [mirror] #01-50

The plans are subject to change as may be required or approved by the relevant authorities. Areas are estimates only and are subject to final survey. Plans are not drawn to scale and do not form part of the contract.

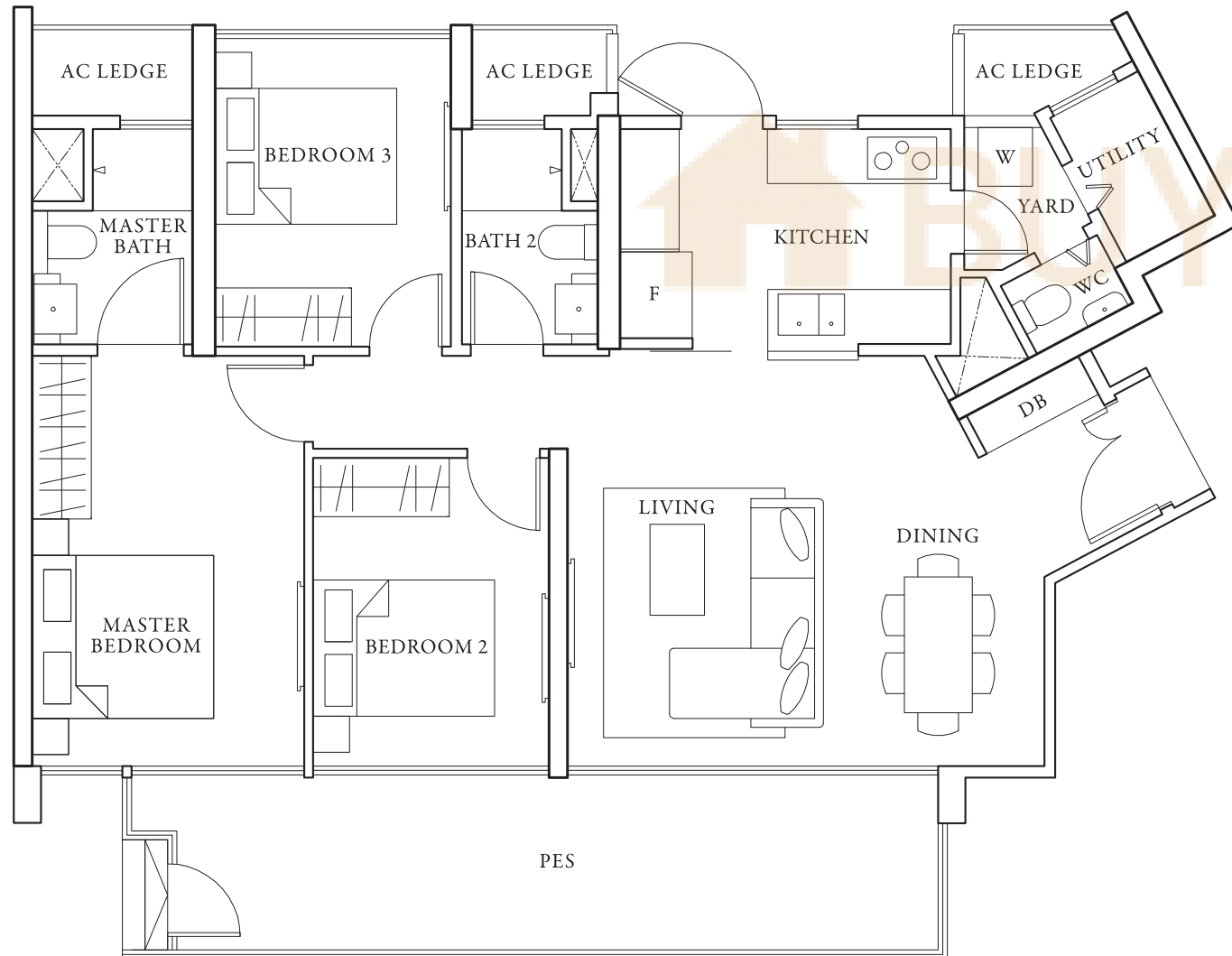


### 3 BEDROOM PREMIUM

B3Ga



Area 112 sqm / 1206 sqft

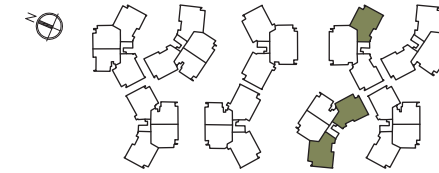


#01-23 #01-54

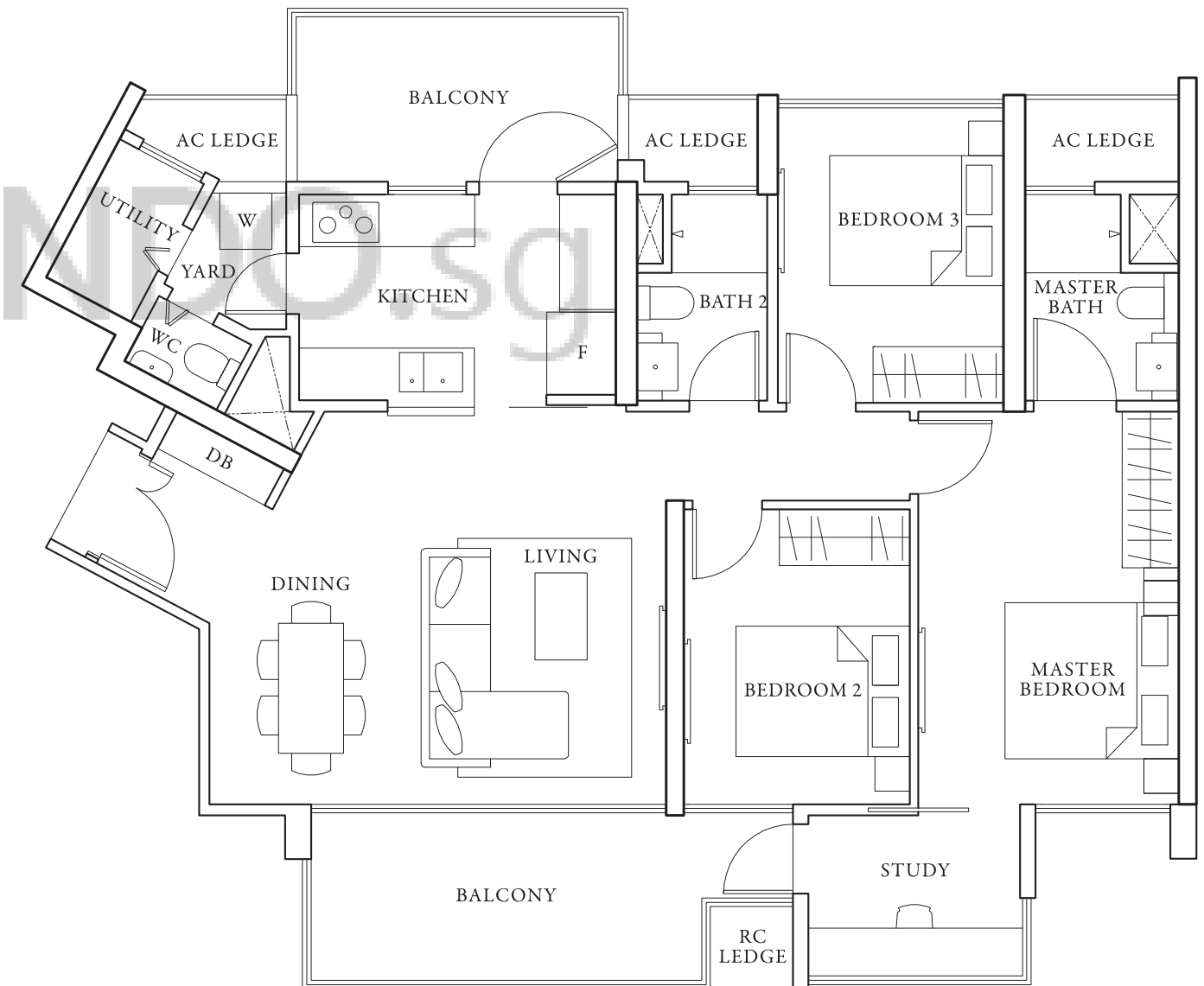
### 3 BEDROOM PREMIUM

### + STUDY

B4

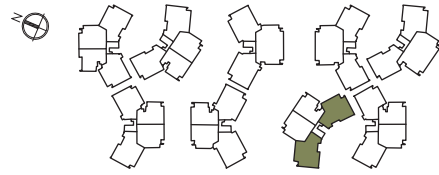


Area 118 sqm / 1270 sqft

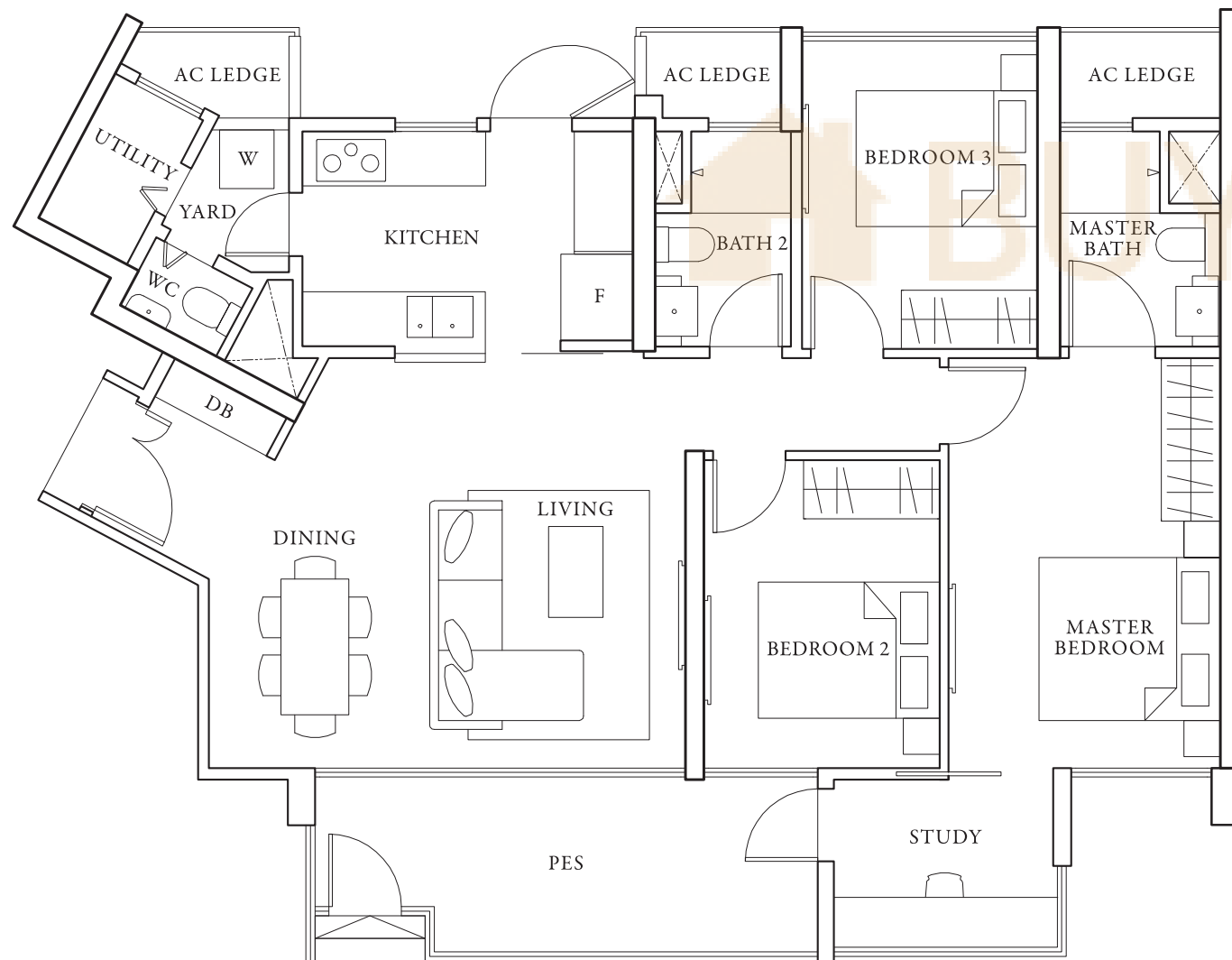


#02-35 to #04-35 [mirror] #02-39 to #04-39 [mirror] #02-42 to #04-42

### 3 BEDROOM PREMIUM + STUDY B4G

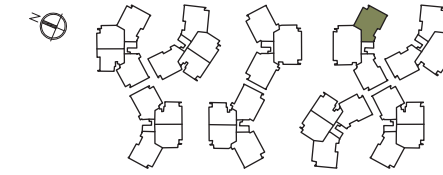


Area 111 sqm / 1195 sqft

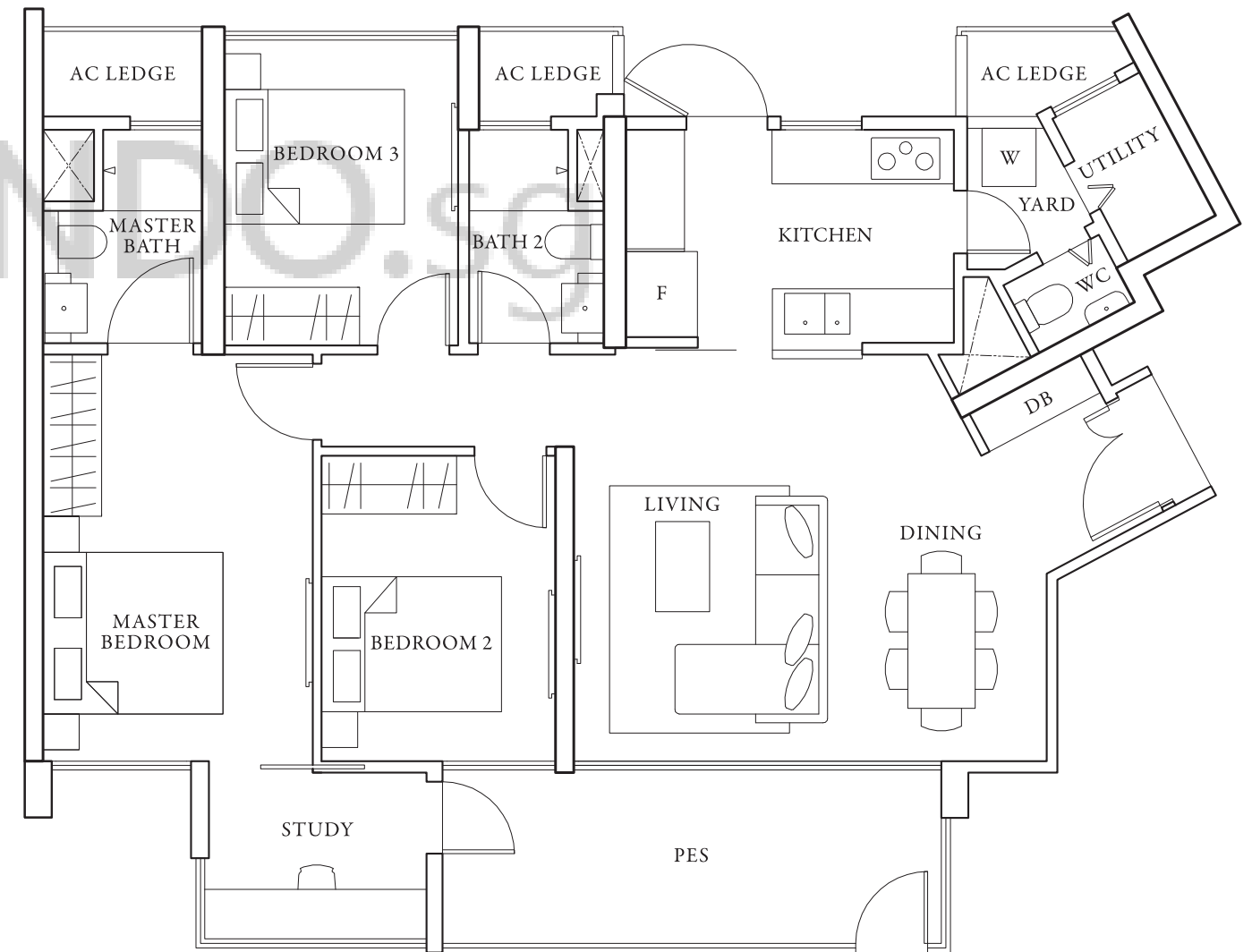


#01-39 [mirror] #01-42

### 3 BEDROOM PREMIUM + STUDY B4Ga

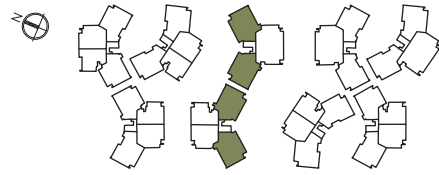


Area 111 sqm / 1195 sqft

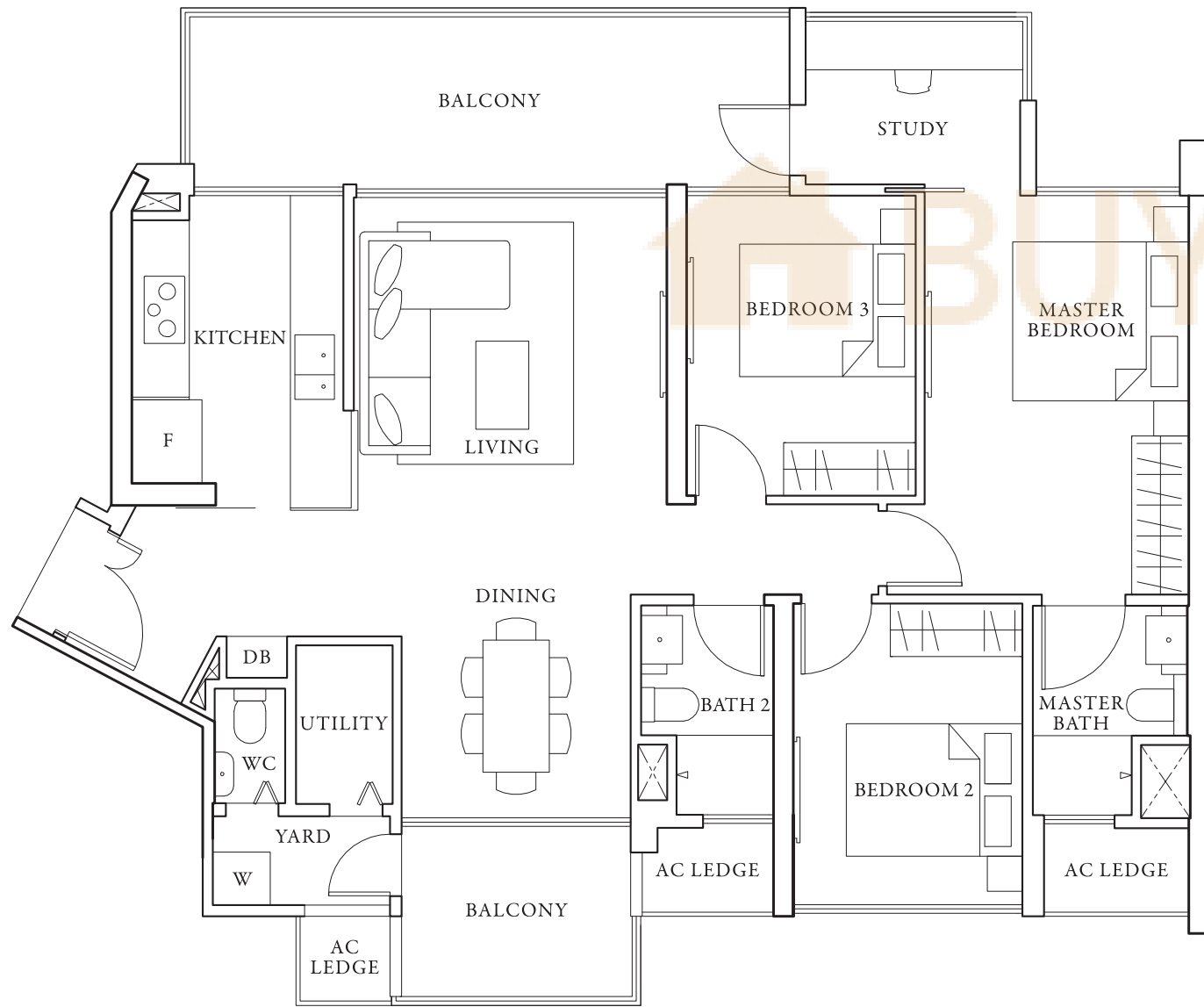


#01-35

### 3 BEDROOM PREMIUM + STUDY B5

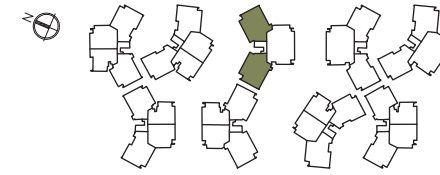


Area 121 sqm / 1302 sqft

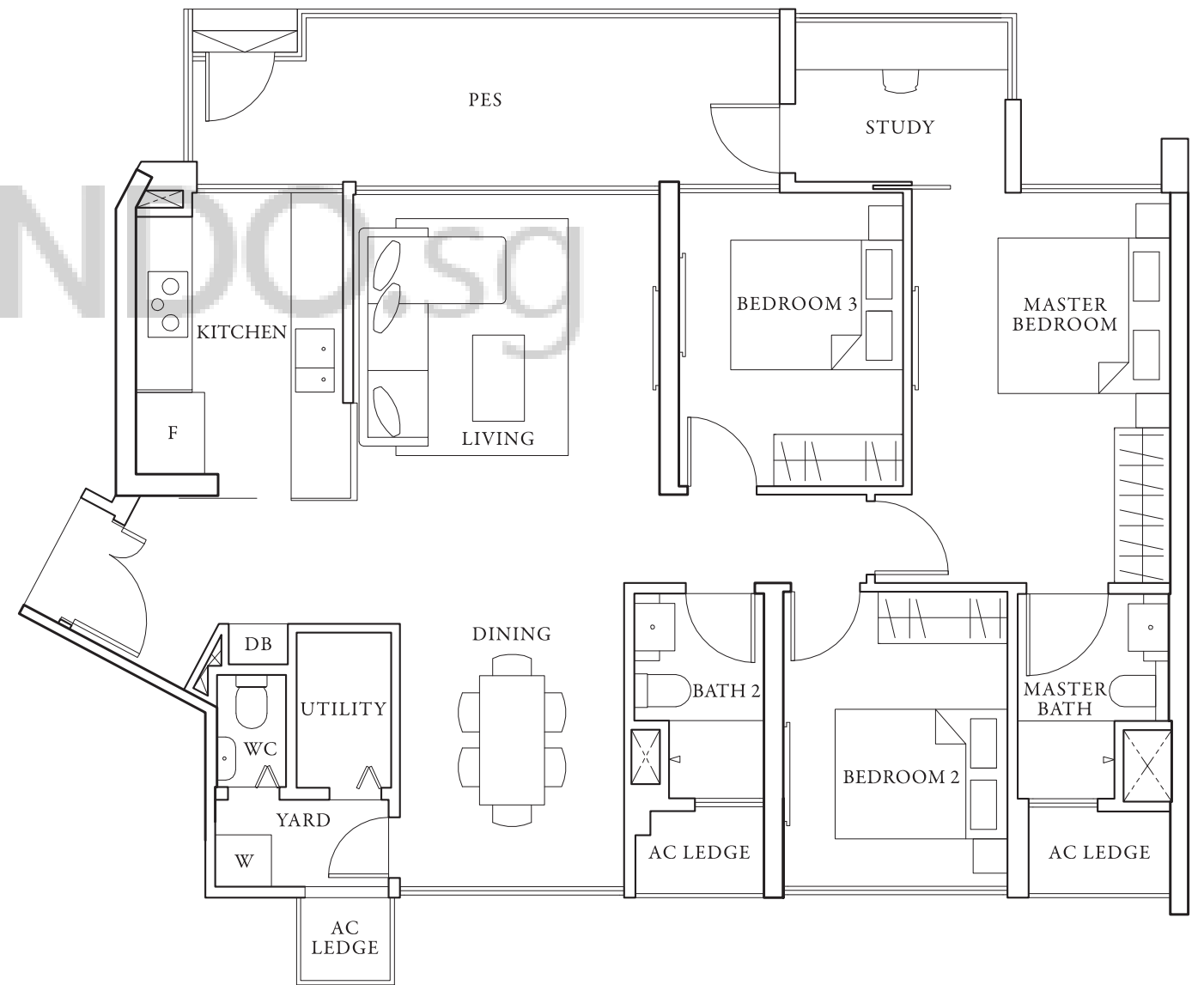


#02-13 to #04-13 #02-18 to #04-18 [mirror] #02-26 to #04-26 #02-30 to #04-30 [mirror]

### 3 BEDROOM PREMIUM + STUDY B5G

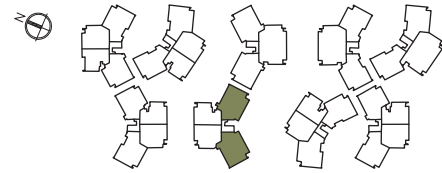


Area 118 sqm / 1270 sqft

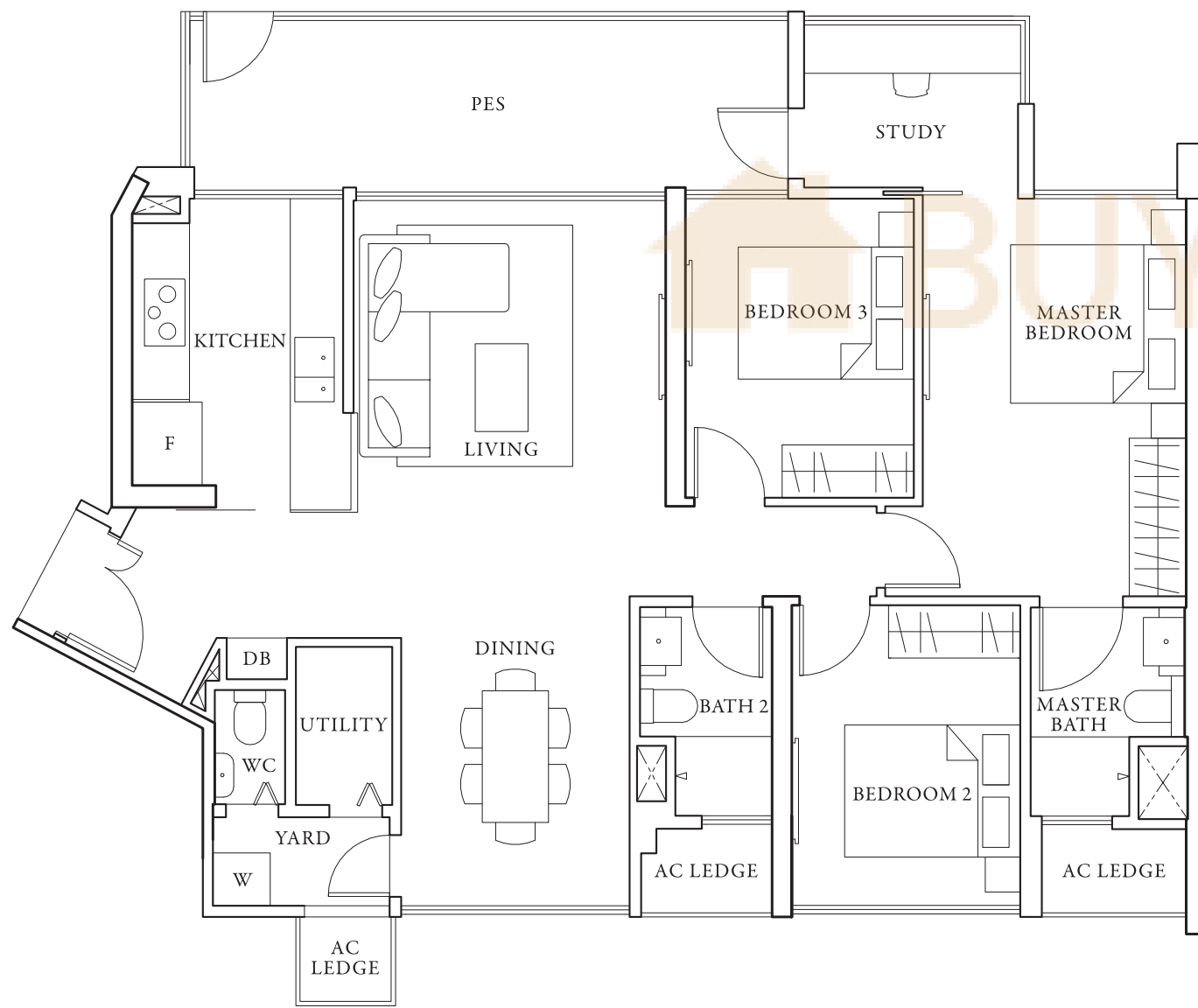


#01-26 #01-30 [mirror]

### 3 BEDROOM PREMIUM + STUDY B5Ga



Area 118 sqm / 1270 sqft



#01-13 #01-18 [mirror]

*A Housekeeper's Guide to*

## T H E R E F R I G E R A T O R

*The refrigerator is the backbone of every kitchen but also one of the most overlooked appliances. It doesn't ask for a lot of care but a proper setup and some periodic attention can significantly enhance the performance and longevity of this pantry workhorse.*

1

*Locate the refrigerator away from heat sources.*

A heated environment can tax the refrigerator's cooling system, causing it to consume energy which translates into bigger bills. Heat sources include water heaters, stoves and sunny windows.

2

*From time to time, check door gaskets for a good seal.*

Close the door on a piece of paper and try to remove the paper. If the paper is not held snugly in place, adjust the door or replace the seal.

3

*Vacuum the coils at the back of the unit at least once a year.  
(or at six-monthly intervals if there are pets at home)*

Dirty coils can cause overheating which in turn will shut the refrigerating system down. To clean, unplug the unit, pull out from the wall and reach behind or under with a vacuum cleaner nozzle.

4

*Check for food spoilages once a week.*

Toss out anything past its prime to prevent overcrowding. This helps to keep cold air circulating freely for optimal refrigeration.

5

*Clean the interiors.*

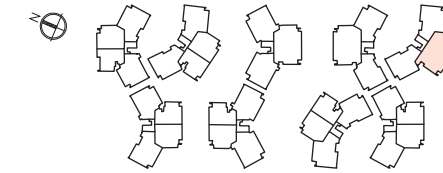
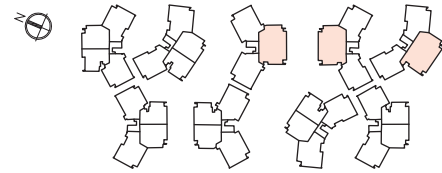
Empty contents into a cooler box, remove all the drawers and clean them in the sink using a sponge, warm water, and liquid dish soap. Leave these out to air-dry. Wipe down the interior including shelf seams and door seals, working from top to bottom. Use a brush and baking soda solution for stubborn, caked-on grime.

# 4 BEDROOM DUAL KEY

# 4 BEDROOM DUAL KEY

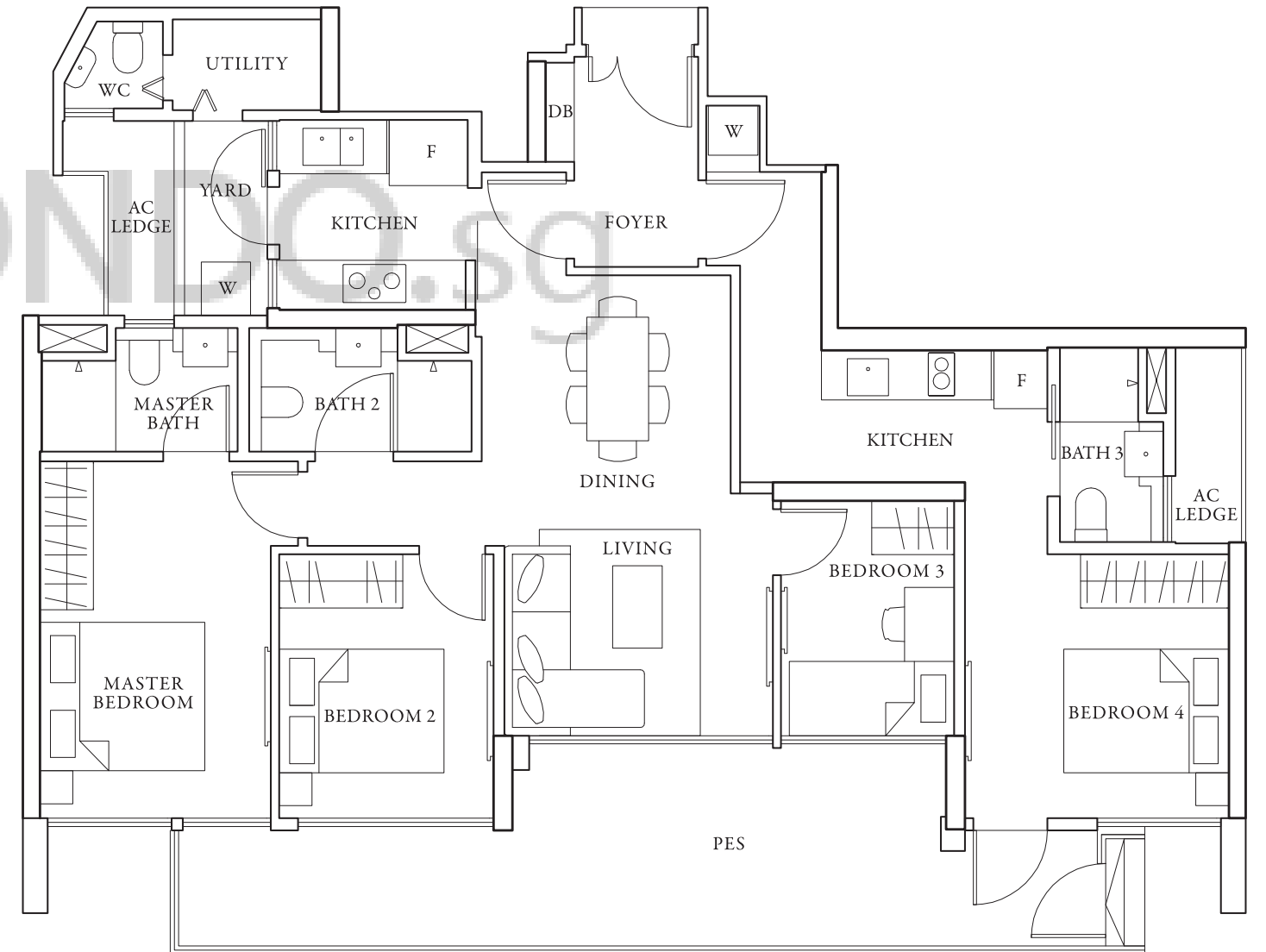
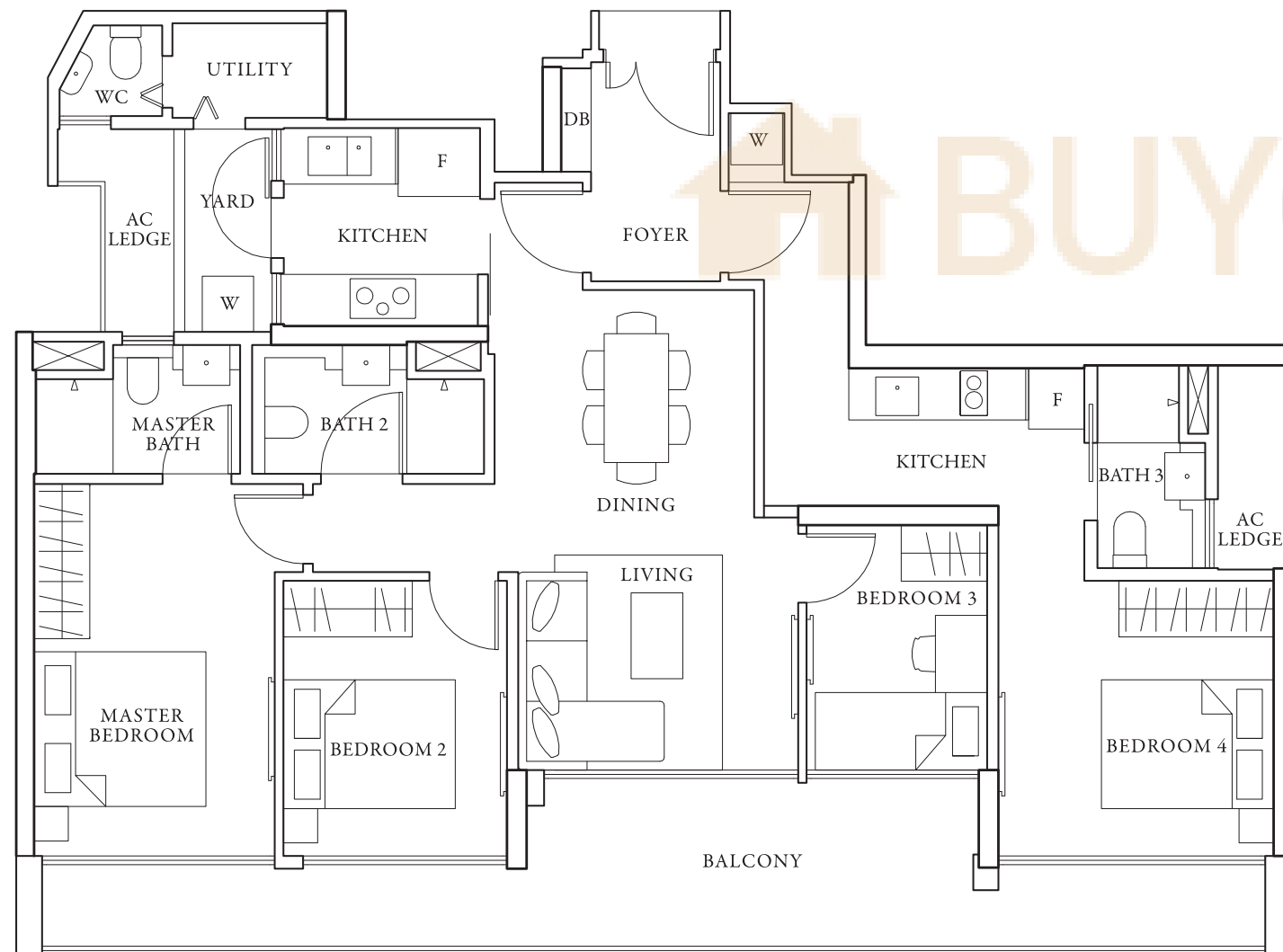
## DK

## DKG



Area 131 sqm / 1410 sqft

Area 134 sqm / 1442 sqft

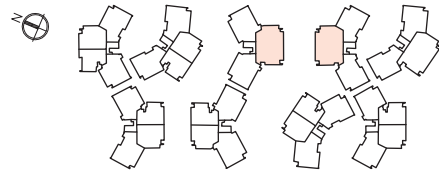


#02-28 to #04-28 #02-33 to #04-33 [mirror] #02-52 to #04-52

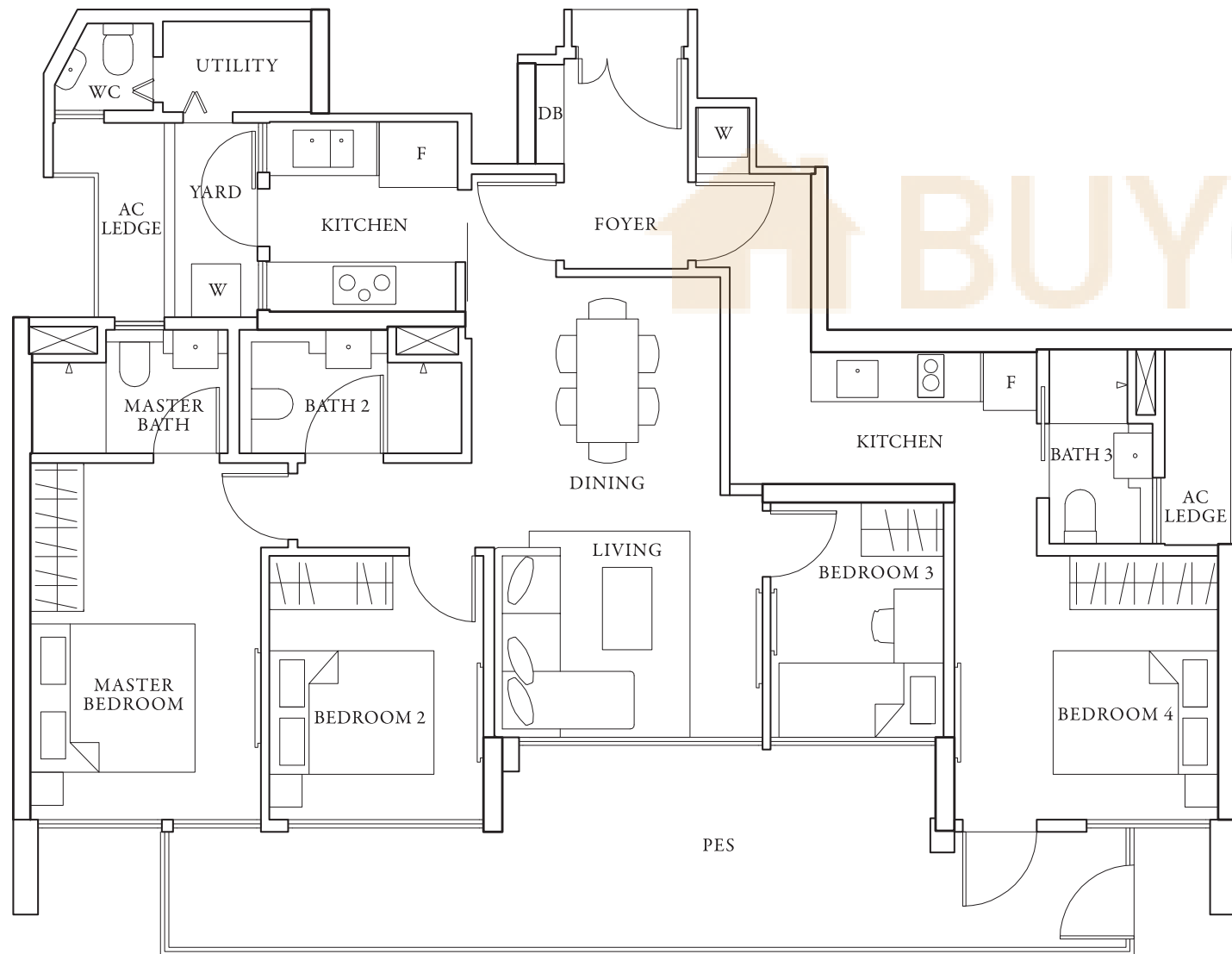
#01-52

# 4 BEDROOM DUAL KEY

DKGa



Area 134 sqm / 1442 sqft



#01-28 #01-33 [mirror]

*A Housekeeper's Guide to*

## THE SOLID SURFACE COUNTERTOP

*The solid surface countertop is the hero of the modern household. High-performance yet low-maintenance, taking care of it is a breeze. To make it go the extra mile as it is designed to, heed these practical tips.*

1

*Keep your countertop dry.*

Water left to dry on the countertop causes film buildup, which gives a dull and blotchy surface finish.

2

*Choose the right cleaning tools for your surface.*

Most residues can be taken care of with warm soapy water or a dedicated countertop cleaner. For high-gloss surfaces, use only soft cloths or sponges instead of abrasive cleaning pads.

3

*Use mats and trivets.*

Place hot objects and appliances such as electric skillets on flame-resistant mats or on solid trivets (with rubber tip feet), even if your countertop is heat-resistant.

4

*Use a cutting board.*

Refrain from cutting or chopping directly on countertop because while minor cuts and scratches can be buffed away, deeper cuts may require the services of a professional at an added expense.

5

*Work fast.*

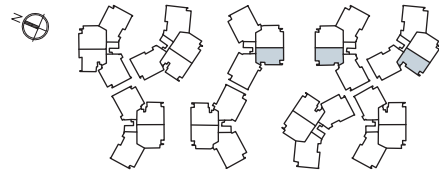
If you choose to use diluted household bleach for disinfection, do not allow bleach to remain in contact with countertop for more than two minutes.



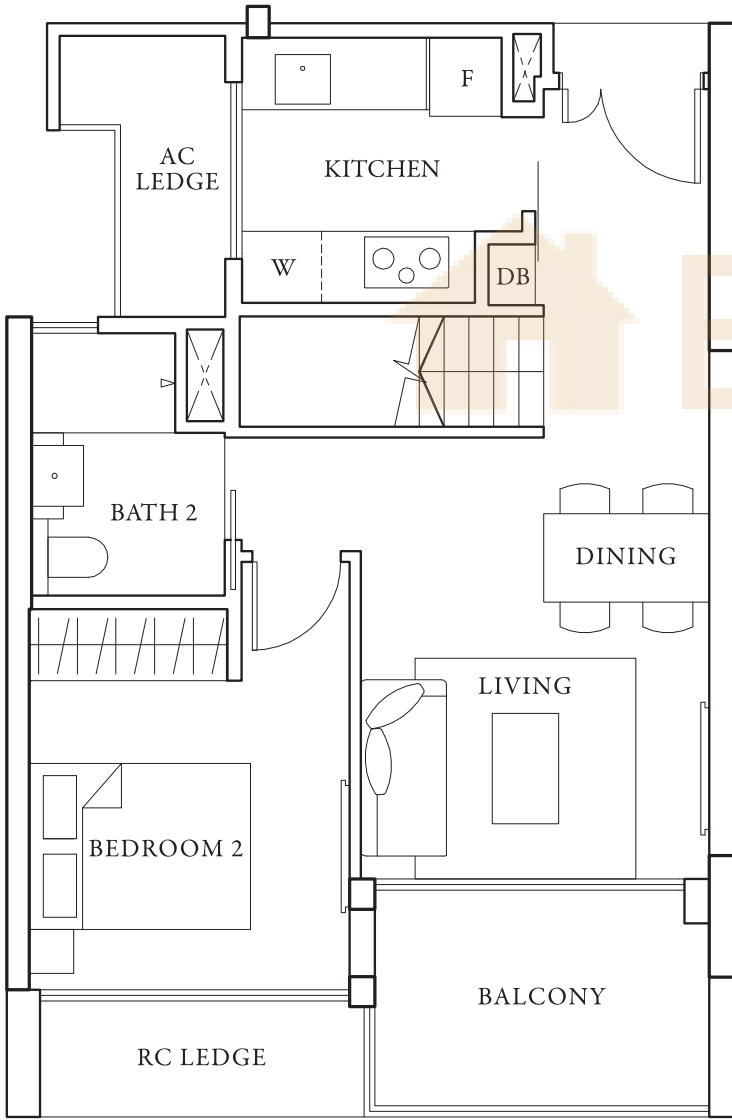


# 2 BEDROOM PENTHOUSE

## PH 1

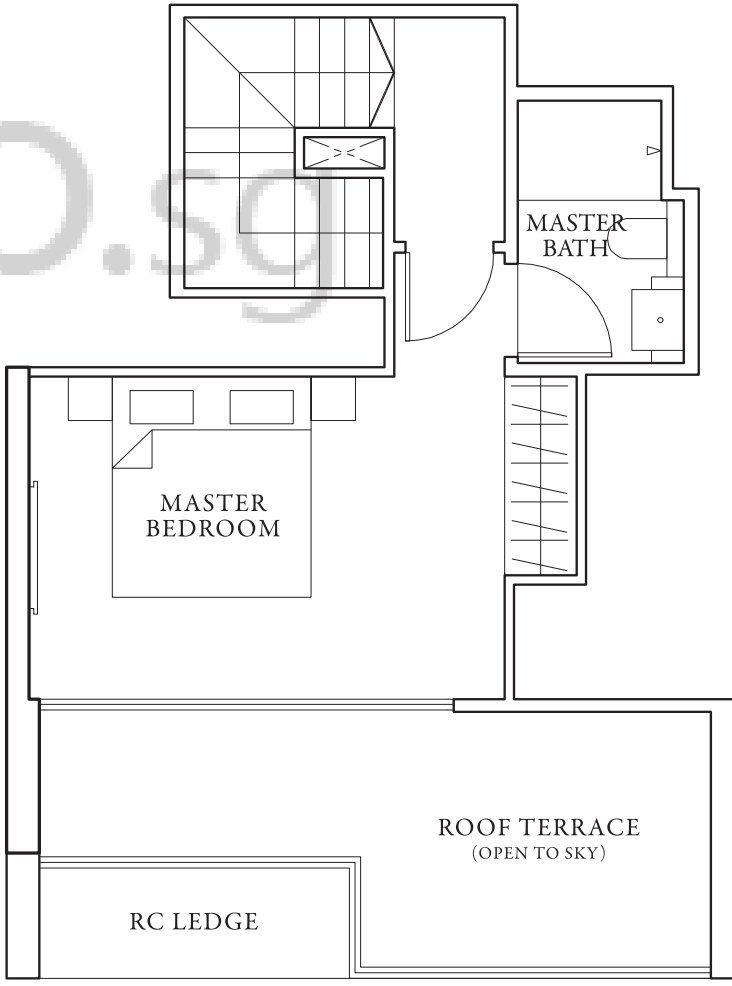


Area 96 sqm / 1033 sqft



Lower level

#05-28 #05-33 [mirror] #05-52



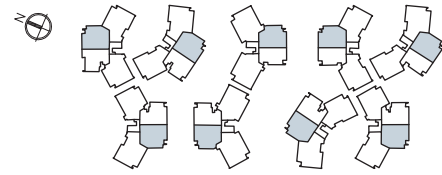
Upper level

The plans are subject to change as may be required or approved by the relevant authorities. Areas are estimates only and are subject to final survey. Plans are not drawn to scale and do not form part of the contract.

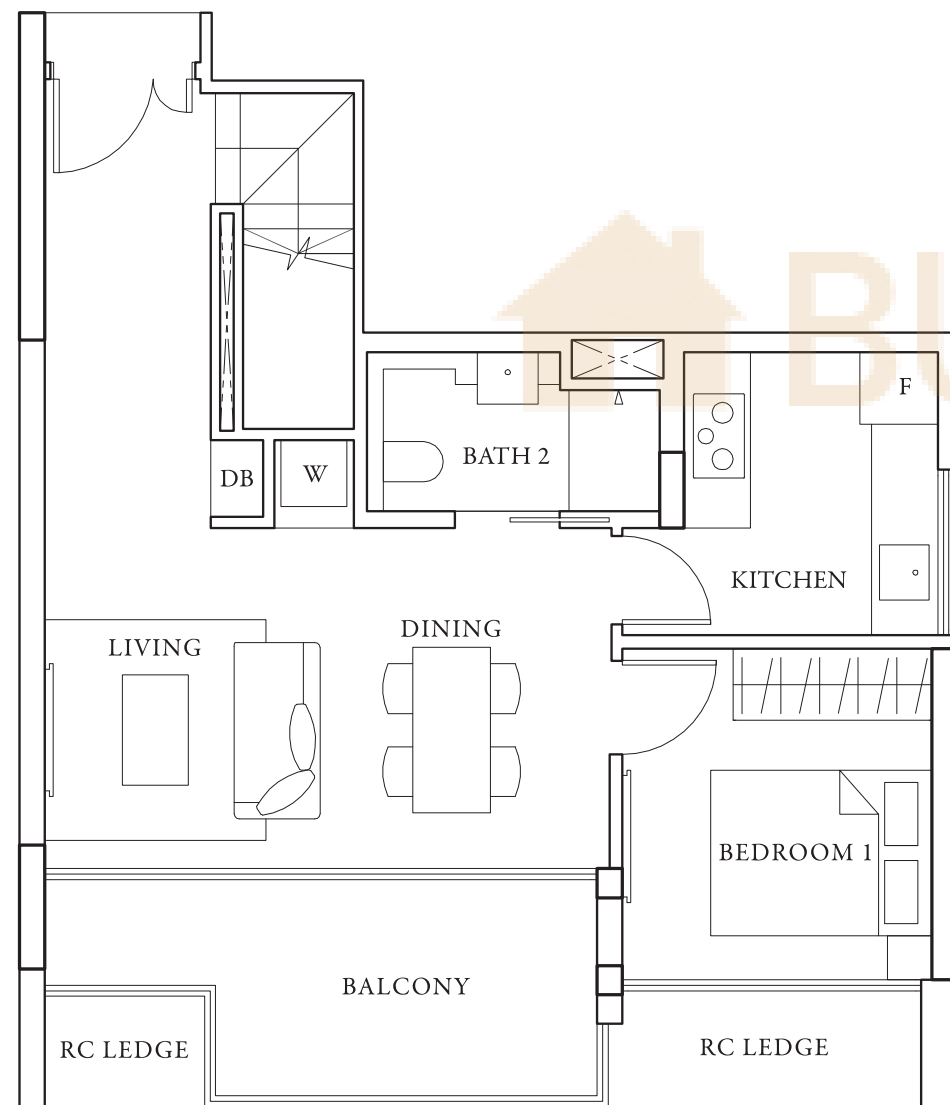
The plans are subject to change as may be required or approved by the relevant authorities. Areas are estimates only and are subject to final survey. Plans are not drawn to scale and do not form part of the contract.

# 2 BEDROOM PENTHOUSE

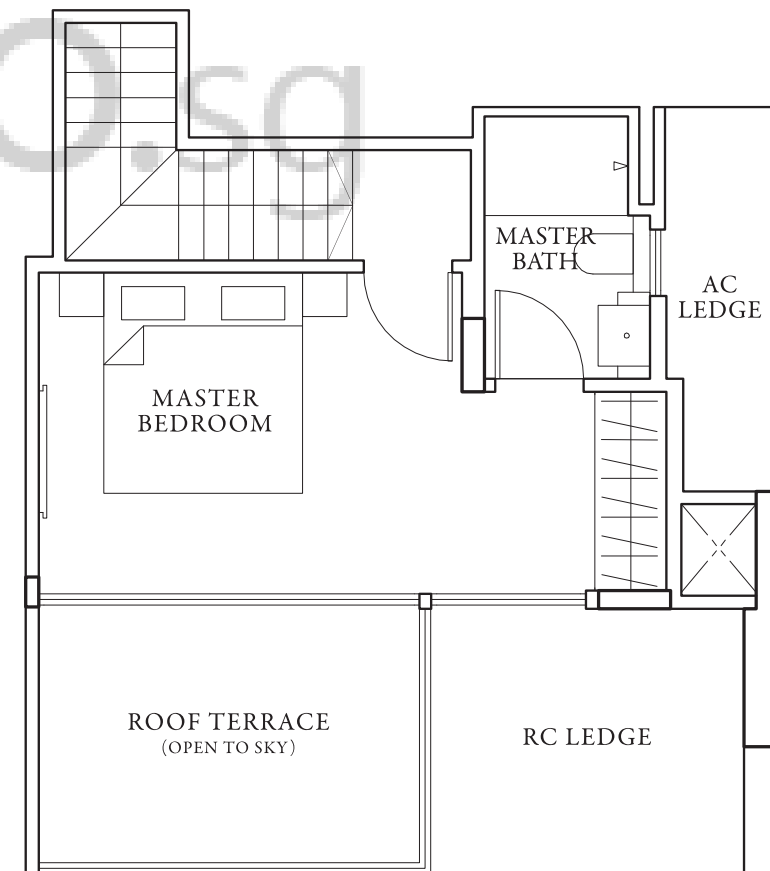
## PH 2



Area 98 sqm / 1055 sqft



Lower level

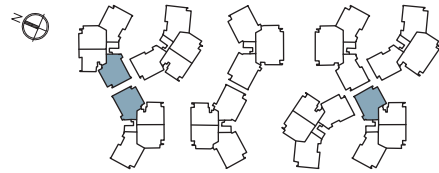


Upper level

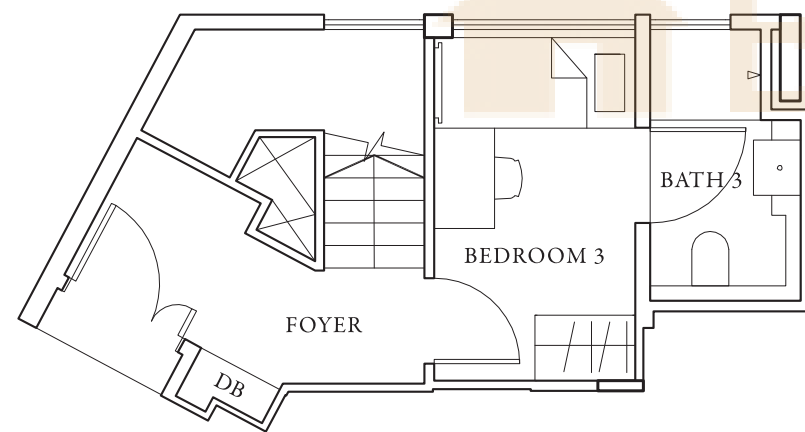
#05-02 [mirror] #05-10 [mirror] #05-15 #05-21 #05-27 #05-34 [mirror]  
 #05-37 #05-46 [mirror] #05-51

# 3 BEDROOM PENTHOUSE

## PH 3

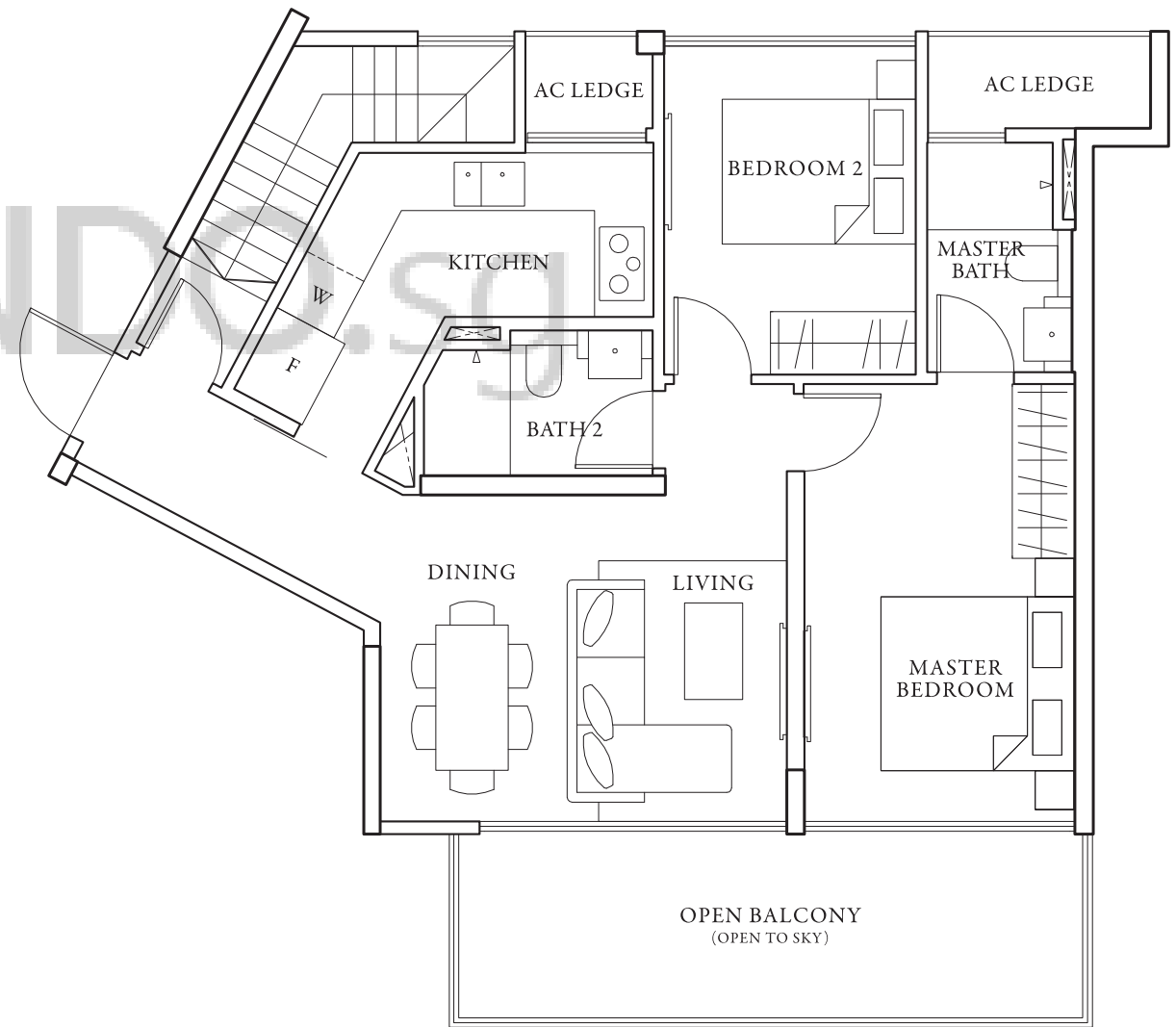


Area 109 sqm / 1173 sqft



Lower level

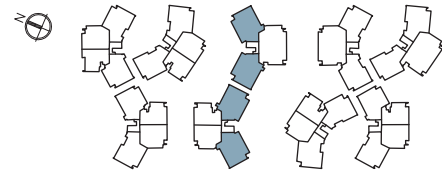
#05-05 #05-07 #05-43



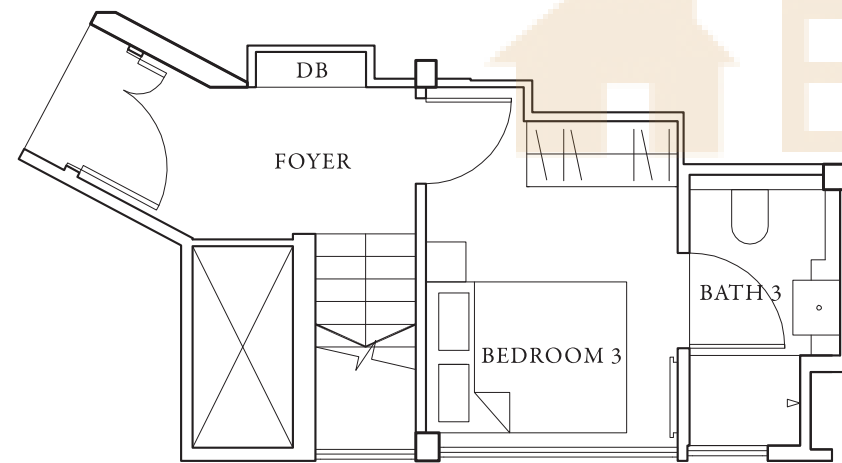
Upper level

# 3 BEDROOM PENTHOUSE

## PH 4



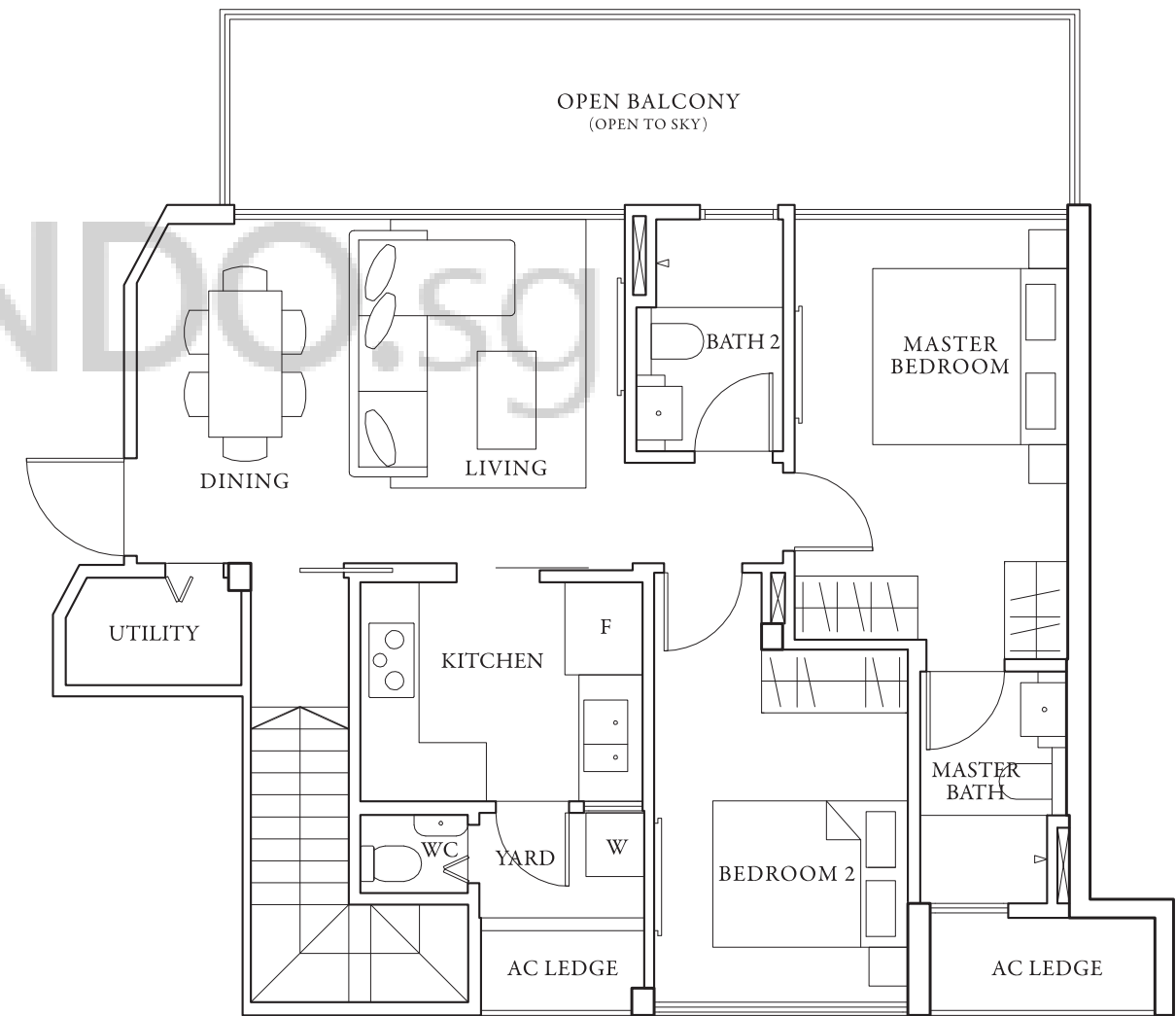
Area 119 sqm / 1281 sqft



Lower level

#05-14 #05-17 [mirror] #05-26 #05-29 [mirror]

The plans are subject to change as may be required or approved by the relevant authorities. Areas are estimates only and are subject to final survey. Plans are not drawn to scale and do not form part of the contract.

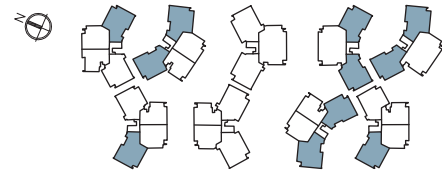


Upper level

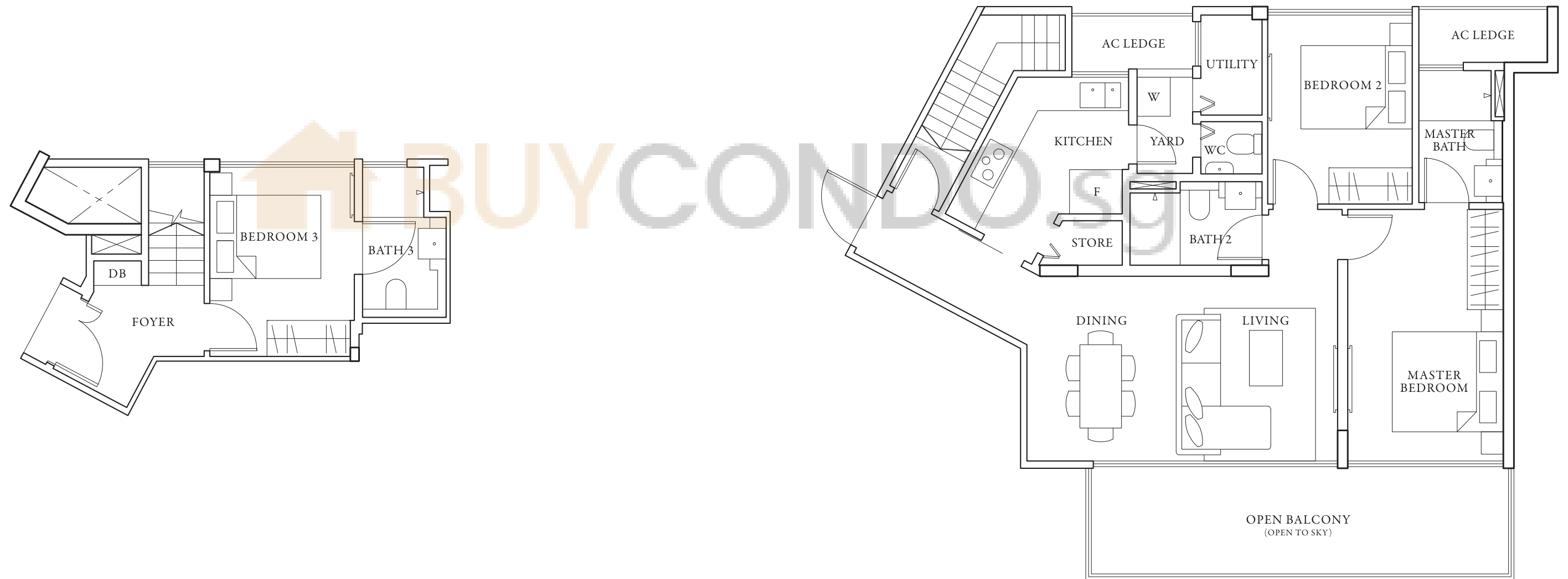
The plans are subject to change as may be required or approved by the relevant authorities. Areas are estimates only and are subject to final survey. Plans are not drawn to scale and do not form part of the contract.

# 3 BEDROOM PENTHOUSE

## PH 5



Area 125 sqm / 1346 sqft



Lower level

Upper level

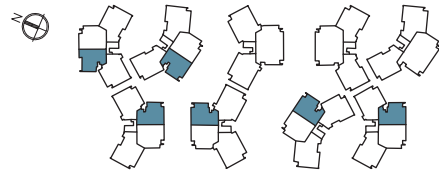
- #05-04 [mirror] #05-12 [mirror] #05-19 #05-24 [mirror] #05-31 #05-36 [mirror]
- #05-40 [mirror] #05-41 #05-48 [mirror] #05-49 #05-54 [mirror]

The plans are subject to change as may be required or approved by the relevant authorities. Areas are estimates only and are subject to final survey. Plans are not drawn to scale and do not form part of the contract.

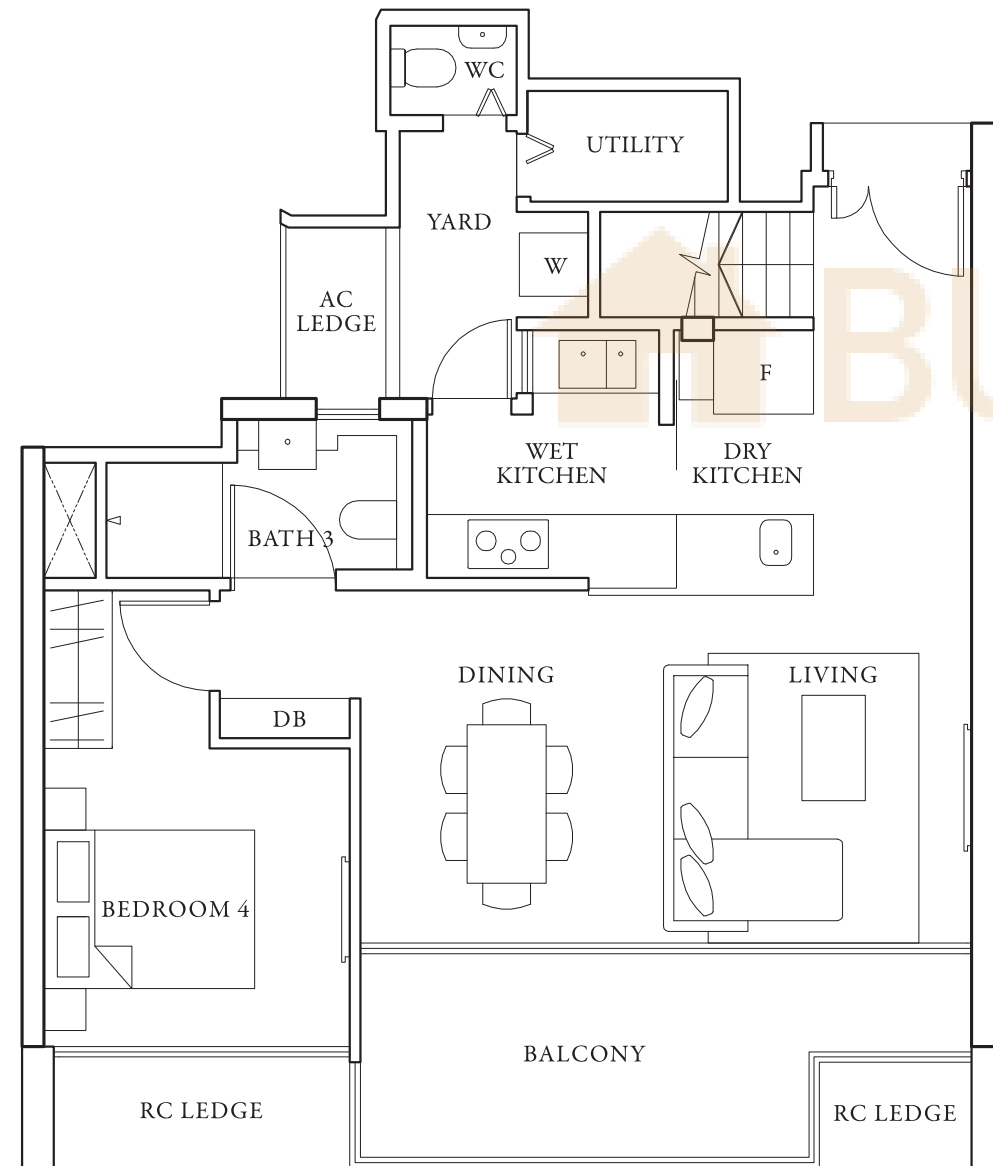
The plans are subject to change as may be required or approved by the relevant authorities. Areas are estimates only and are subject to final survey. Plans are not drawn to scale and do not form part of the contract.

# 4 BEDROOM PENTHOUSE

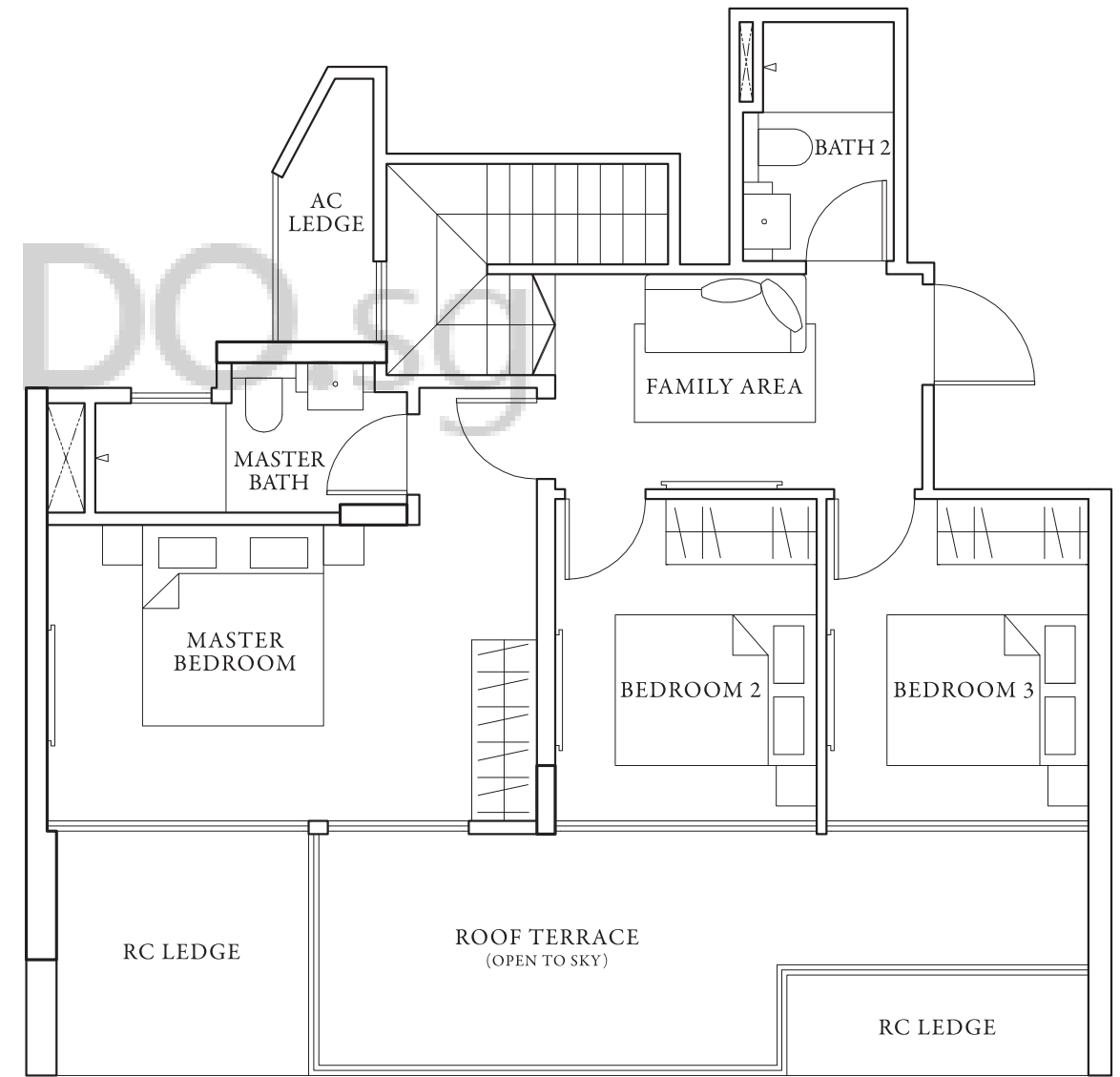
## PH 6



Area 153 sqm / 1647 sqft



Lower level



Upper level

#05-01 [mirror] #05-09 [mirror] #05-16 #05-22 #05-38 #05-45 [mirror]