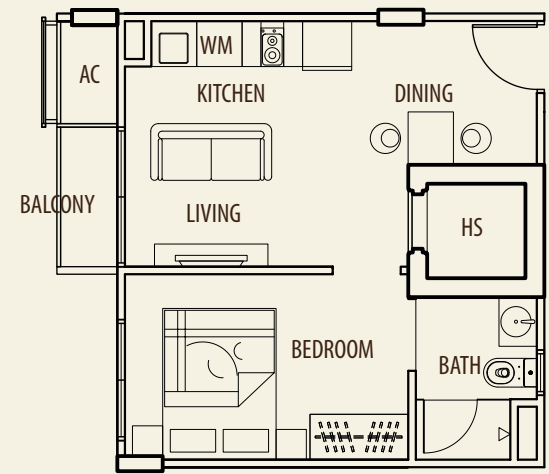
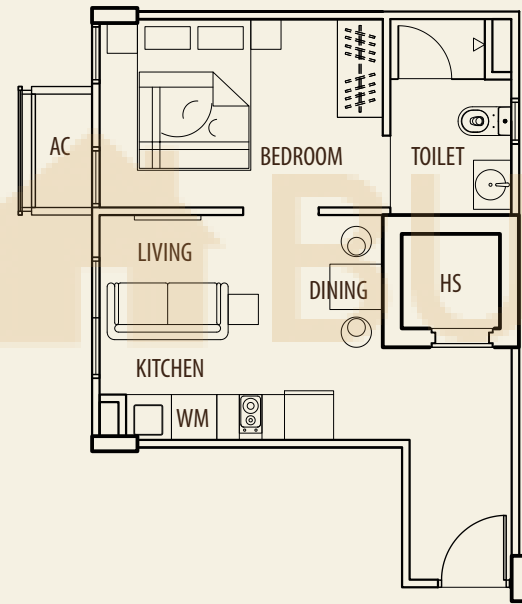
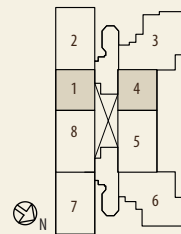


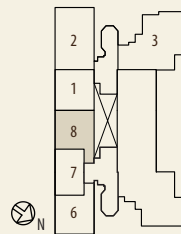
# Type A - 1 Bedroom



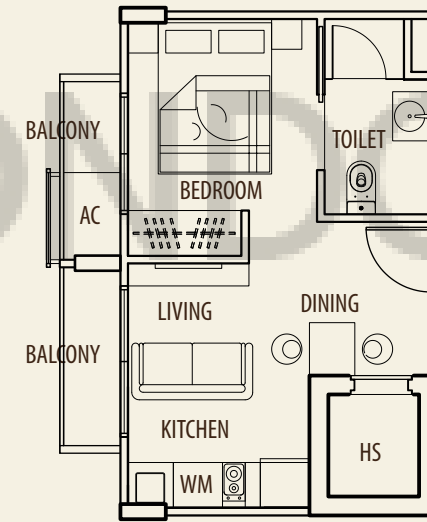
**Type A1**  
35 sqm / 377 sq ft  
(#02-01, #03-01, #04-01, #05-01, #03-04, #04-04)



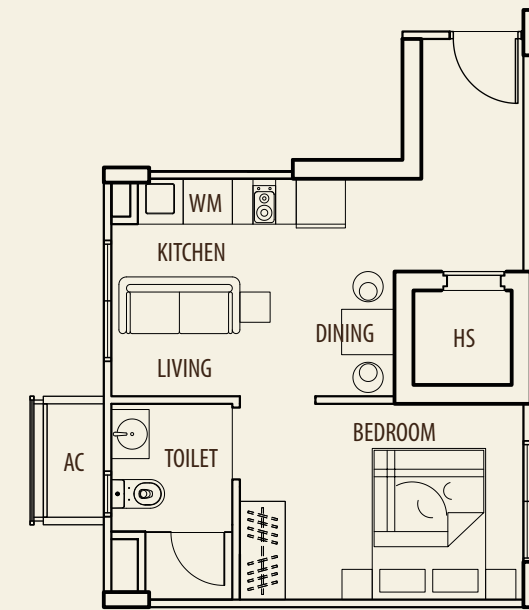
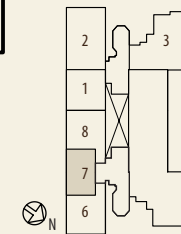
**Type A2**  
35 sqm / 377 sq ft  
(#02-08)



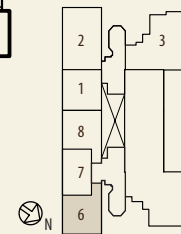
# Type A - 1 Bedroom



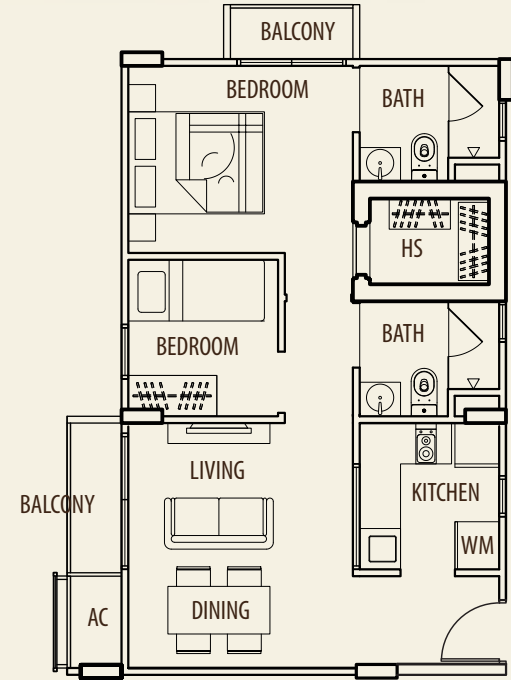
**Type A3**  
31 sqm / 334 sq ft  
(#02-07)



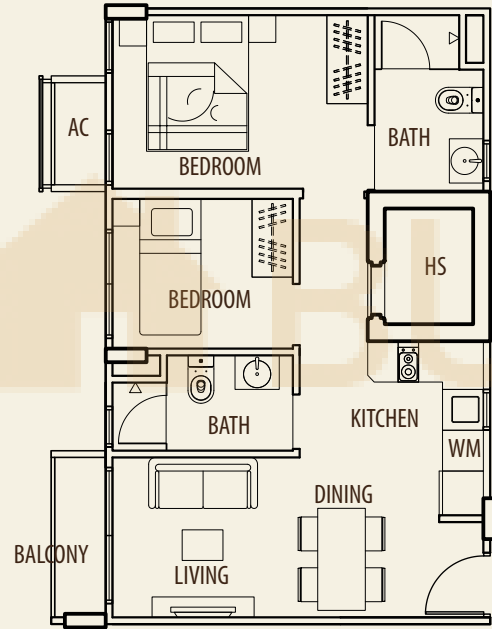
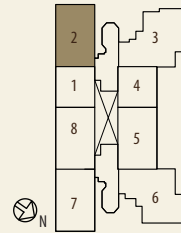
**Type A4**  
35 sqm / 377 sq ft  
(#02-06)



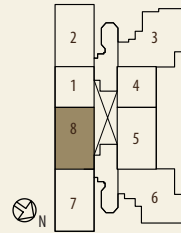
## Type B - 2 Bedroom



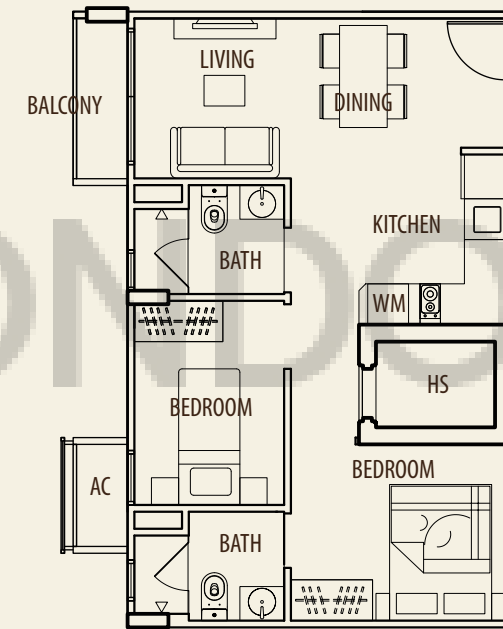
**Type B1**  
54 sqm / 581 sq ft  
(#02-02, #03-02, #04-02)



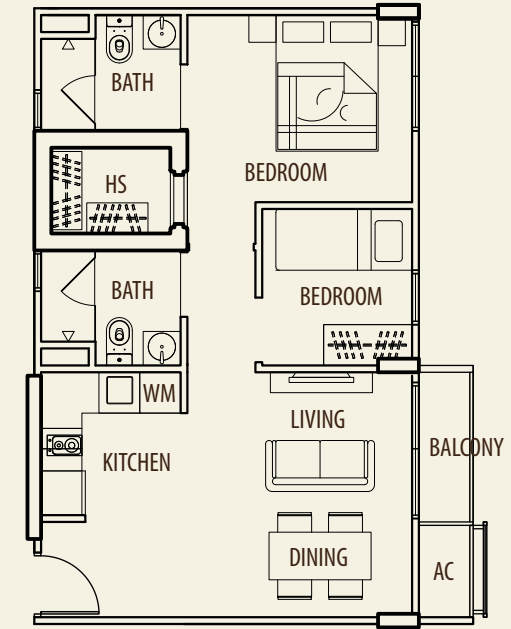
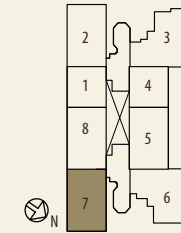
**Type B2**  
53 sqm / 570 sq ft  
(#03-08, #04-08, #05-08)



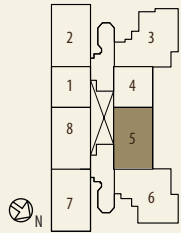
## Type B - 2 Bedroom



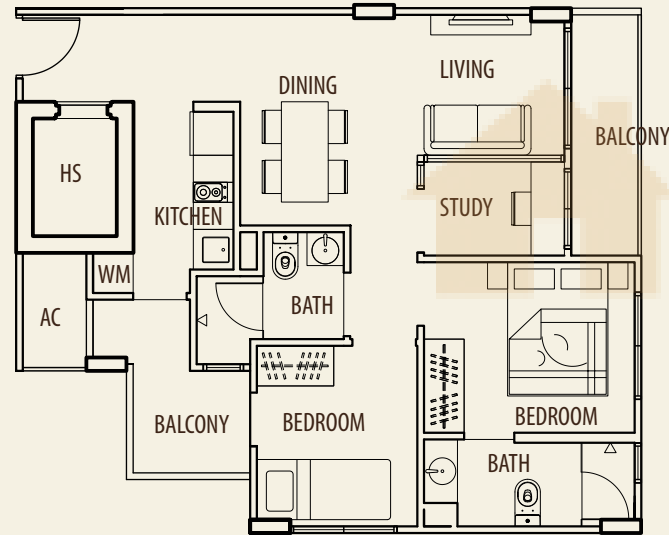
**Type B3**  
53 sqm / 570 sq ft  
(#03-07, #04-07, #05-07)



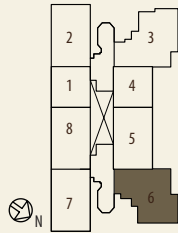
**Type B4**  
52 sqm / 560 sq ft  
(#03-05, #04-05)



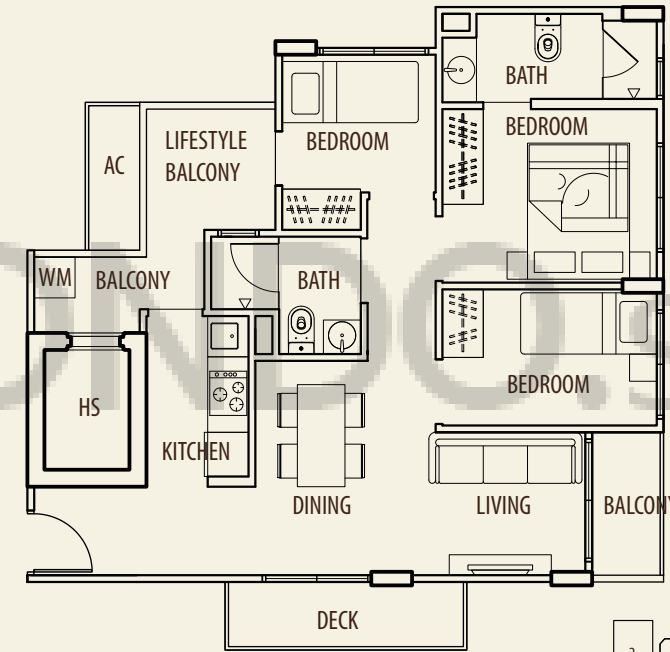
## Type B - 2+1 Bedroom



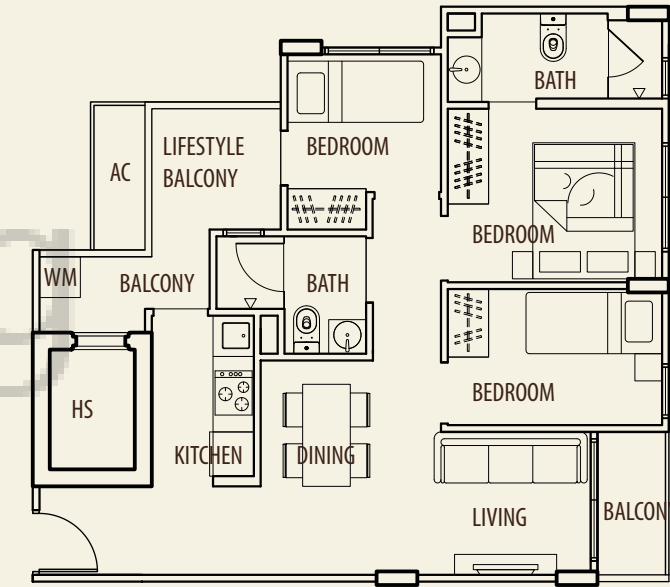
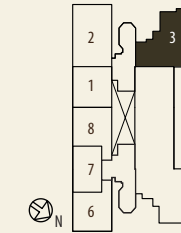
**Type B5**  
66 sqm / 710 sq ft  
(#03-06, #04-06)



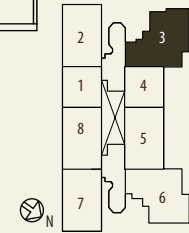
## Type C - 3 Bedroom



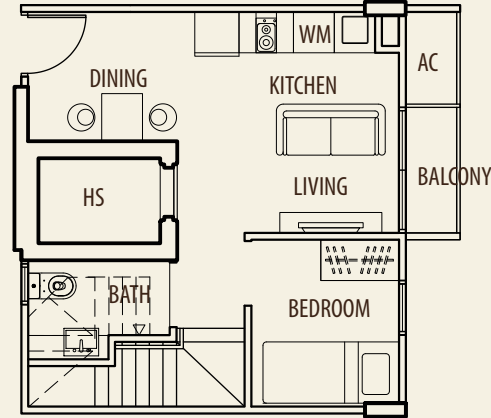
**Type C1**  
73 sqm / 786 sq ft  
(#02-03)



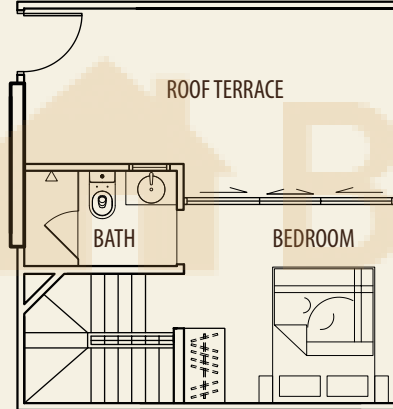
**Type C2**  
69 sqm / 743 sq ft  
(#03-03, #04-03)



## Penthouse - 2 Bedroom

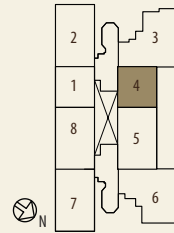


LOWER PENTHOUSE

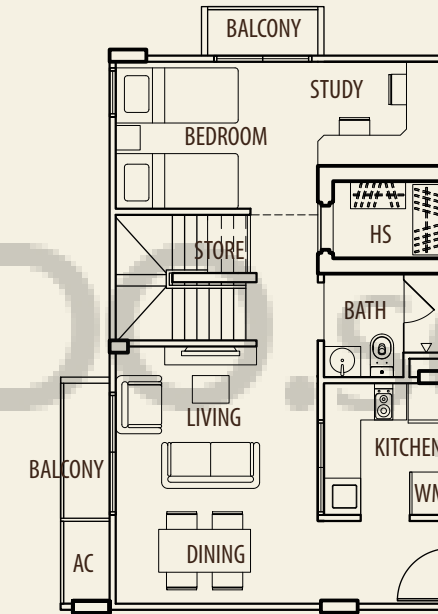


UPPER PENTHOUSE

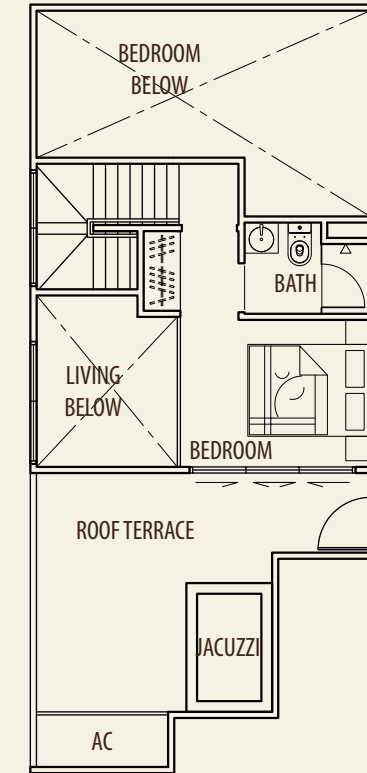
**Type PH1**  
68 sqm / 732 sq ft  
(#05-04)



## Penthouse - 2+1 Bedroom

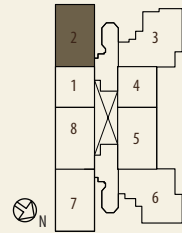


LOWER PENTHOUSE

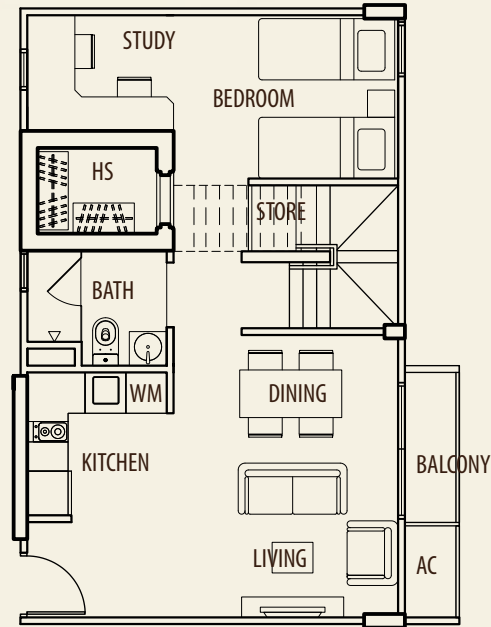


UPPER PENTHOUSE

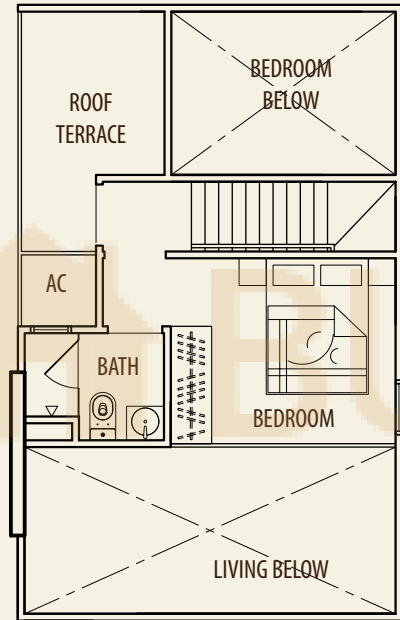
**Type PH2**  
116 sqm / 1249 sq ft  
(#05-02)



## Penthouse - 2+1 Bedroom

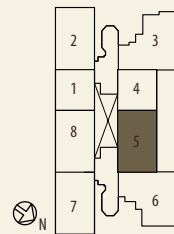


LOWER PENTHOUSE

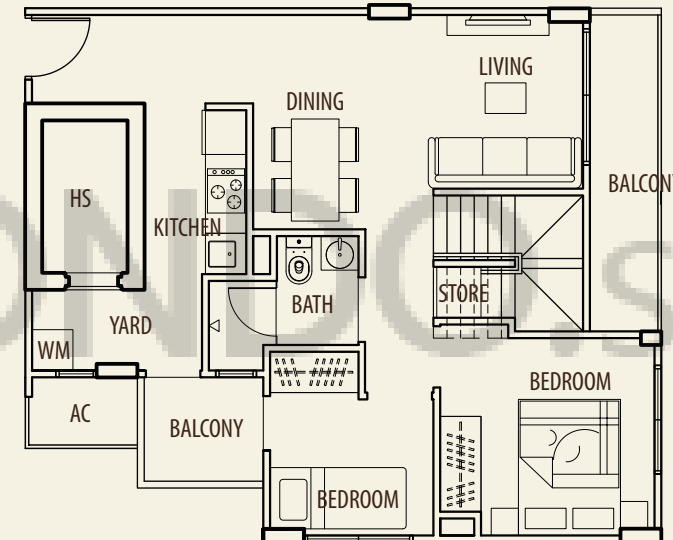


UPPER PENTHOUSE

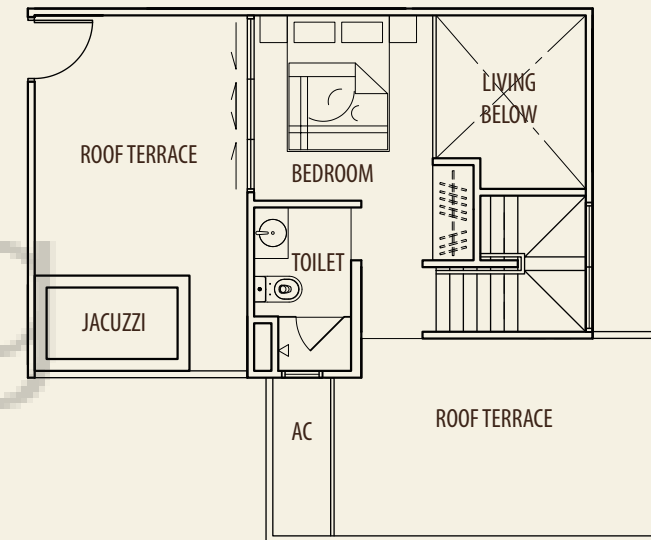
**Type PH3**  
103 sqm / 1109 sq ft  
(#05-05)



## Penthouse - 3 Bedroom

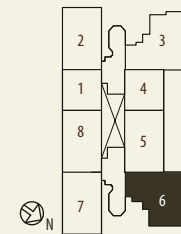


LOWER PENTHOUSE

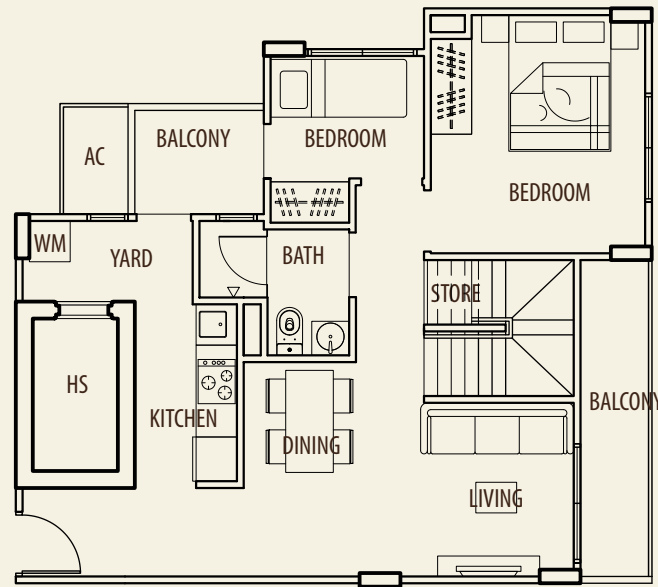


UPPER PENTHOUSE

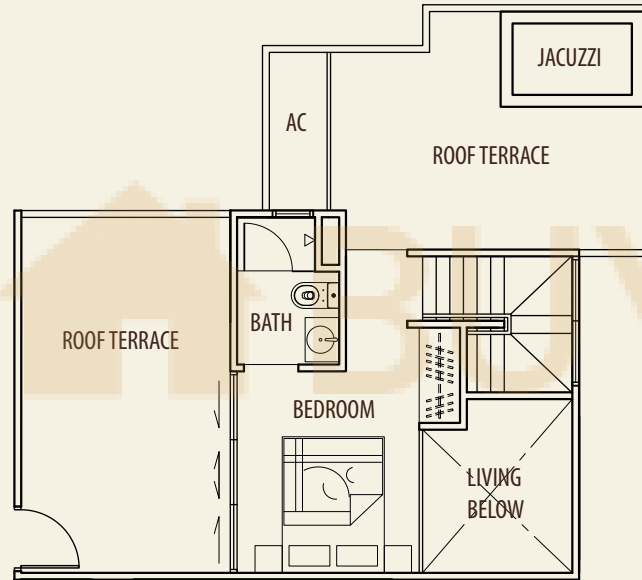
**Type PH4**  
127 sqm / 1367 sq ft  
(#05-06)



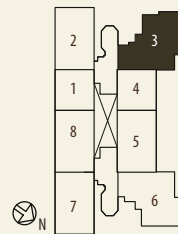
# Penthouse - 3 Bedroom



LOWER PENTHOUSE



UPPER PENTHOUSE



**Type PH5**  
130 sqm / 1399 sq ft  
(#05-03)

## Specifications

- 1. FOUNDATION**  
RC Foundation
- 2. SUPER-STRUCTURE & SUB-STRUCTURE**  
Reinforced concrete structure
- 3. WALLS**
  - a) External: Common clay brick/reinforcement concrete walls
  - b) Internal: Common clay brick/reinforcement concrete walls/cement and sand block/aerated block
- 4. ROOF**
  - a) Flat Roof: Reinforced concrete roof with appropriate insulation and waterproofing system
  - b) Attic Roof: Metal roofing system with appropriate insulation
- 5. CEILING**
  - a) Living, Dining, Bedrooms, Study Room, Balcony, Yard, Household Shelter and Store: Skim coating on concrete ceiling, with or without plaster ceiling boards / box-ups to designated areas with emulsion paint
  - b) Kitchen and Hallway leading to Bedrooms, Bathrooms and W.C.: Fibrous plasterboard ceiling with emulsion paint
- 6. FINISHES**
  - a) Walls
    - i) Living, Dining, Bedrooms, Study Room, Hallways to Bedrooms, Balcony, Household Shelter, Store, A/C ledge: Cement and sand plaster / cement skim coat with emulsion paint (on exposed surfaces only)
    - ii) Kitchen: Ceramic / homogeneous tiles (up to false ceiling height and on exposed surfaces only)
    - iii) Bathrooms: Ceramic / Homogeneous tiles (up to false ceiling height and on exposed surfaces only) with or without skirting.
    - iv) Open Terrace: Cement and sand plaster / cement skim coat with emulsion paint
  - b) Floor
    - i) Living, Dining, Kitchen and Hallway to Bedrooms: Homogeneous tiles or Marble with or without skirting
    - ii) Bedrooms, Study Room: Timberstrips with or without skirting
    - iii) Bathrooms, Kitchen, Household Shelter: Ceramic / homogeneous tiles (on exposed surfaces only)
    - iv) A/C ledges: Cement and sand screed
    - v) Balcony, Open Terrace: Ceramic / homogeneous tiles
- 7. WINDOWS**
  - a) Living, Dining, Bedrooms, Study Room, Kitchen: Powder coated aluminium framed casement and/or fixed window with tinted glass panel
  - b) Bathrooms: Powder coated aluminium framed top hung window with Tinted or frosted glass panel
- 8. DOORS**
  - a) Main Entrance Door: Fire-rated timber door
  - b) Bedrooms, Study Room, Bathrooms and Store (where applicable): Laminated sliding or swing door
  - c) Kitchen: Laminated timber sliding or swing door with glass infill panel (for unit types B5, C1, C2, PH4, PH5 only)
  - d) Living/ Dining to Balcony, Bedroom to Balcony/Open Terrace, Kitchen to Balcony: Powder coated aluminium framed sliding or swing glass door with or without frost
  - e) Household Shelter: Blast-proof metal door
  - f) Open Terrace: Metal gate
- 9. IRONMONGERY**  
Lockset and ironmongery will be provided
- 10. SANITARY FITTINGS**
  - a) Bathrooms:
 

1 vanity solid top with 1 wash basin and mixer tap with cabinet below	1 mirror
1 glass shower compartment complete with 1 shower mixer	1 paper holder
1 water closet	1 towel rod
  - b) Common Bathroom (For Type PH1 only):
 

1 vanity solid top with 1 wash basin and mixer tap with cabinet below	1 water closet
1 hand-held shower set	1 paper holder
  - c) Open Roof Terrace: 1 bib tap
- 11. AIR CONDITIONING INSTALLATION**  
Inverter type multi-split system with wall mounted fan coil units to Living/Dining, study and bedrooms.
- 12. ELECTRICAL INSTALLATION**
  - a) All electrical wiring for apartment units shall be concealed where possible except for areas with false ceiling where wiring above false ceilings and within electrical compartments shall be in exposed conduit/trunking/tray.
  - b) Please refer to Electrical Schedule for points details.
- 13. TV/TELEPHONE/CABLEVISION**
  - a) All electrical wiring for apartment units shall be concealed where possible except for areas with false ceiling where wiring above false ceilings and within electrical compartments shall be in exposed conduit/trunking/tray.
  - b) Please refer to Electrical Schedule for points details.
- 14. LIGHTNING PROTECTION**  
Lightning protection system provided in compliance with Singapore Standard SS 555.
- 15. HOT WATER HEATER**  
Electric water heater to provide hot water supply to bathroom and kitchen for all units.
- 16. INTERCOM SYSTEM**  
Intercom between 1st storey lift lobby and apartment units.
- 17. SECURITY SYSTEM**  
Auto Gate System - Proximity card access system at side gate, lift lobby and designated areas (where applicable)
- 18. RECREATIONAL FACILITIES**

a) Swimming pool	e) Gym
b) Wading Pool	f) Reading Lounge
c) Jacuzzi	g) Children's play area
d) Pool Terrace	h) BBQ area
- 19. PAINTING SYSTEM**  
External Walls: Sprayed textured coating and/or weather bond emulsion paint  
Internal Walls: Emulsion paint
- 20. WATERPROOFING**  
Waterproofing shall be provided to floors of Bathroom, Toilet, Balcony, Kitchen, Open Terrace and RC Flat Roof
- 21. DRIVEWAY AND CARPARK**  
Surface Driveway & Carpark: Interlocking paver blocks