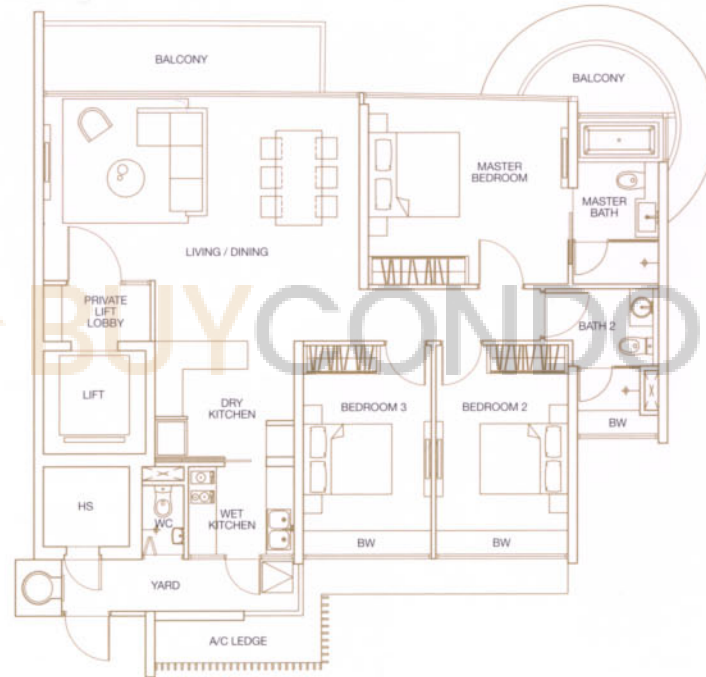


# TYPE A1

3 Bedroom



144 sq.m.

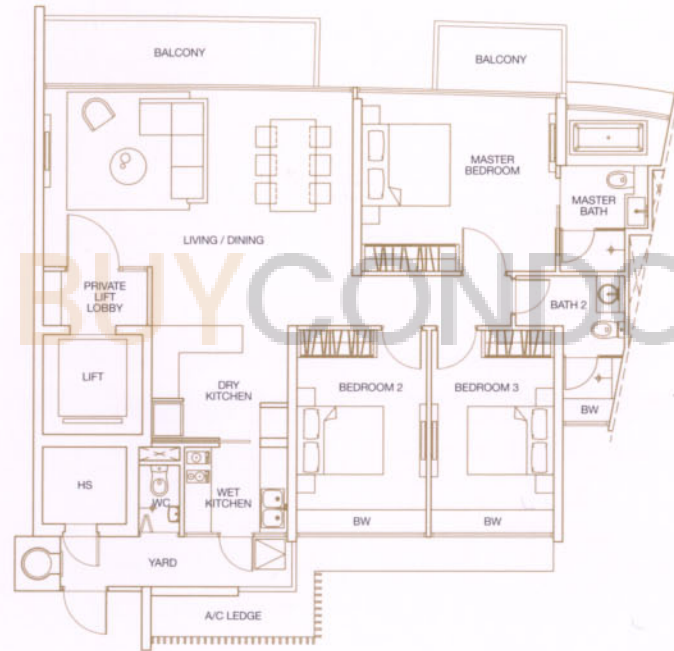
#02-01 to #27-01

All plans are not to scale and subject to change as may be approved by the relevant authorities. Indicated floor areas are approximate and subject to final survey.  
Note: A/C Ledge - Air-con Ledge, HS - Household Shelter, BW - Bay Window.



# TYPE A2

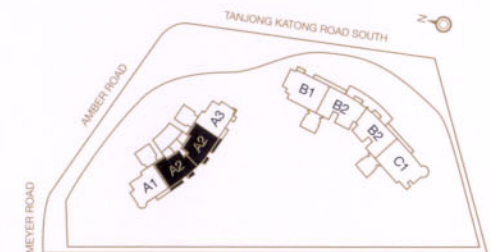
3 Bedroom



142 sq.m.

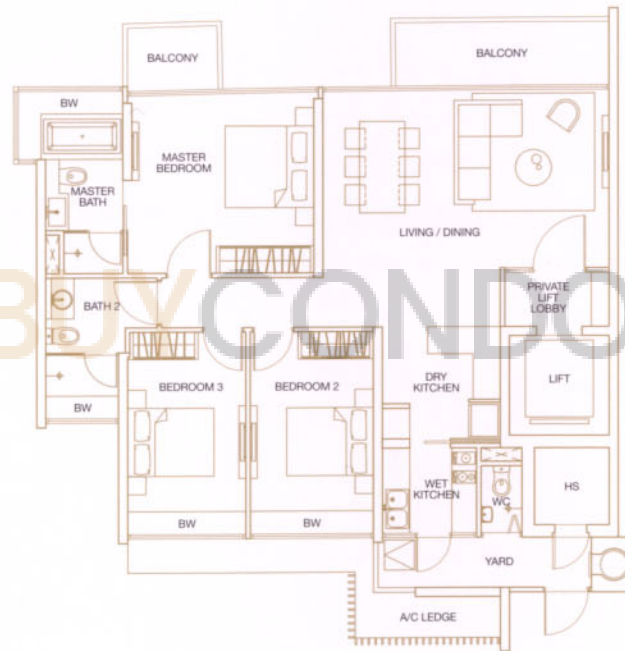
#02-02 to #27-02, #02-03 to #27-03

All plans are not to scale and subject to change as may be approved by the relevant authorities. Indicated floor areas are approximate and subject to final survey.  
Note: A/C Ledge - Air-con Ledge, HS - Household Shelter, BW - Bay Window.



# TYPE A3

3 Bedroom



134 sq.m.

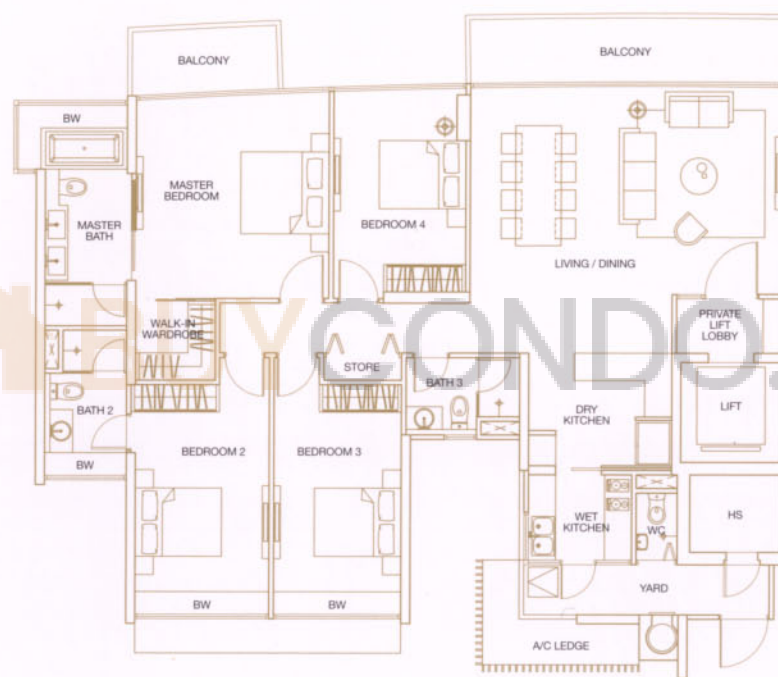
#02-04 to #27-04

All plans are not to scale and subject to change as may be approved by the relevant authorities. Indicated floor areas are approximate and subject to final survey.  
Note: A/C Ledge - Air-con Ledge, HS - Household Shelter, BW - Bay Window.



# TYPE B1

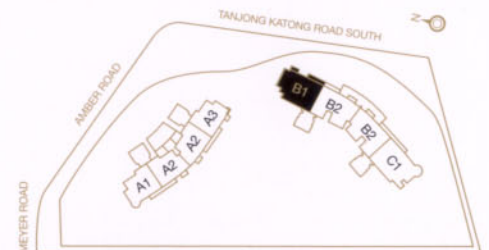
4 Bedroom



188 sq.m.

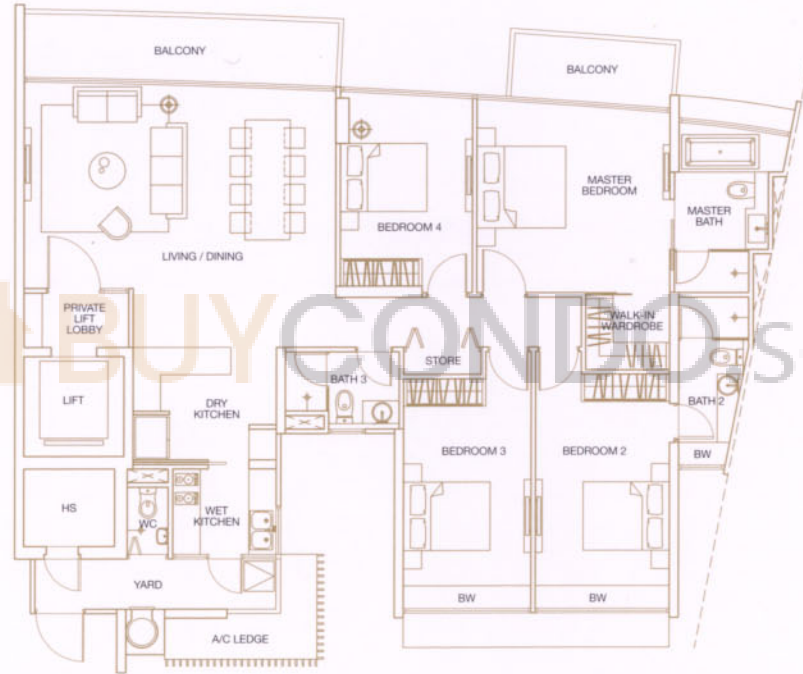
#03-05 to #24-05

All plans are not to scale and subject to change as may be approved by the relevant authorities. Indicated floor areas are approximate and subject to final survey.  
Note: A/C Ledge - Air-con Ledge, HS - Household Shelter, BW - Bay Window.



# TYPE B2

4 Bedroom



182 sq.m.

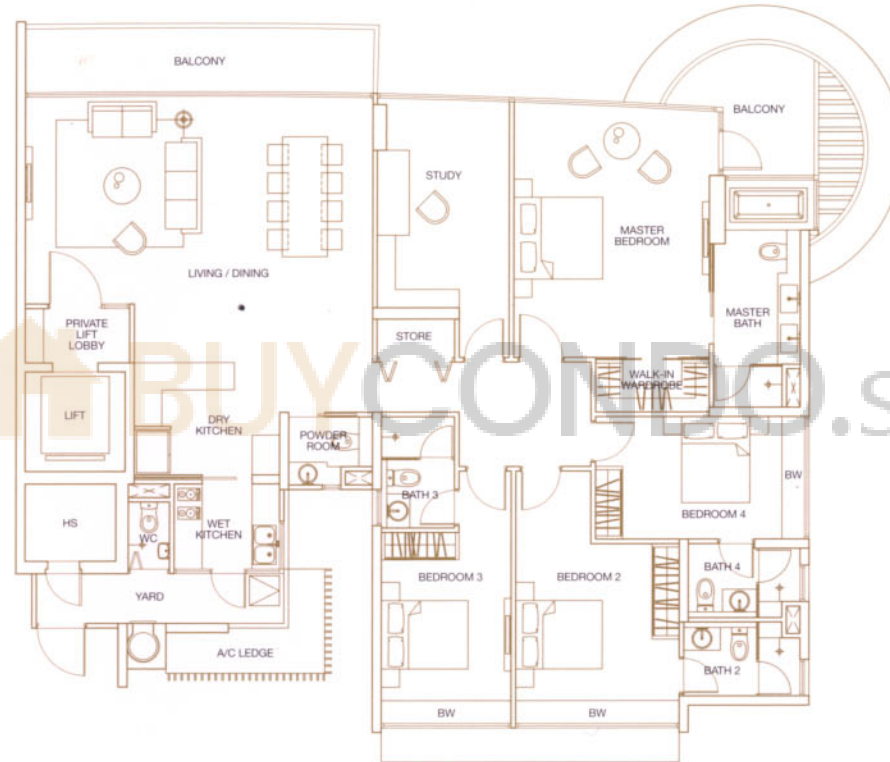
#03-06 to #24-06, #03-07 to #24-07

All plans are not to scale and subject to change as may be approved by the relevant authorities. Indicated floor areas are approximate and subject to final survey.  
Note: A/C Ledge - Air-con Ledge, HS - Household Shelter, BW - Bay Window.



# TYPE C1

4+1 Bedroom



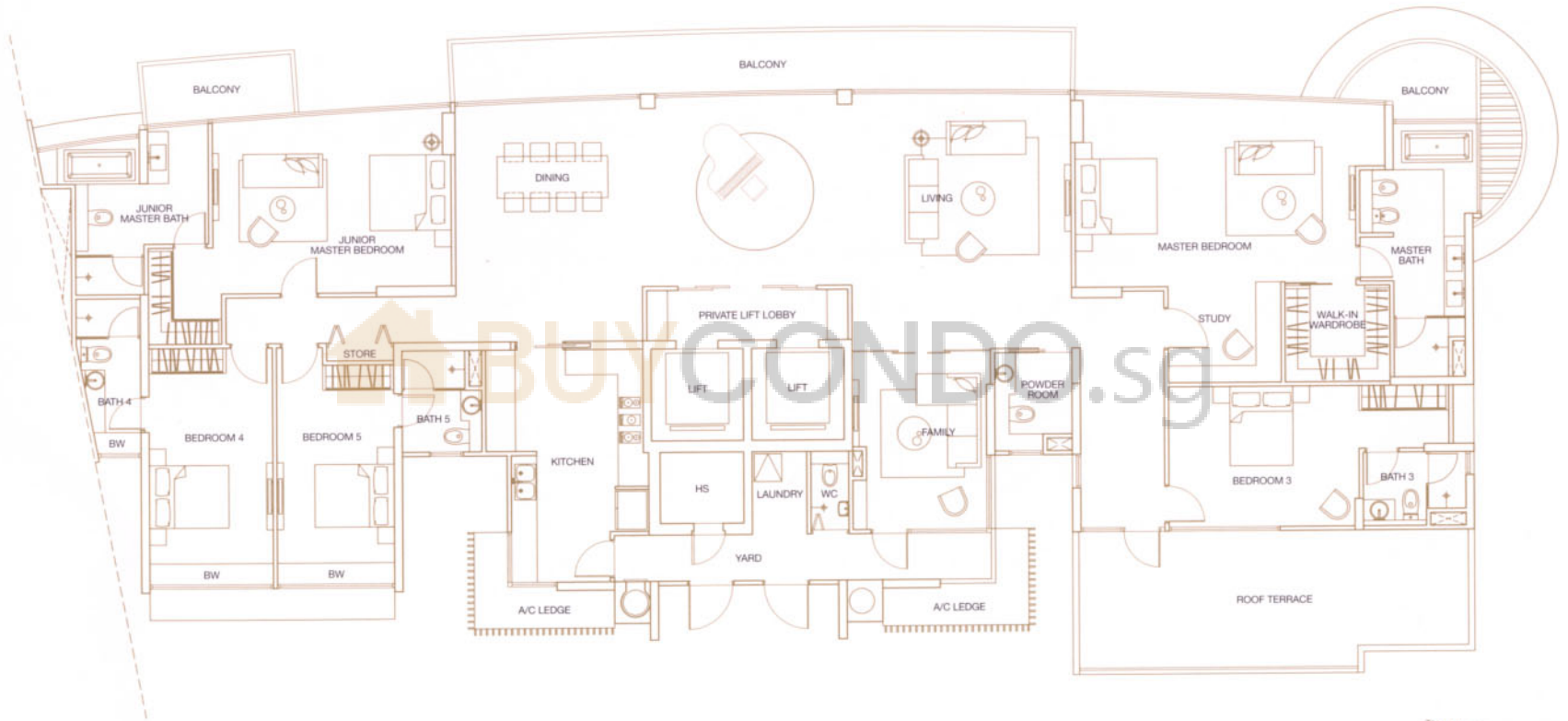
227 sq.m.

#03-08 to #24-08

All plans are not to scale and subject to change as may be approved by the relevant authorities. Indicated floor areas are approximate and subject to final survey.  
Note: A/C Ledge - Air-con Ledge, HS - Household Shelter, BW - Bay Window.



# TYPE SPH1

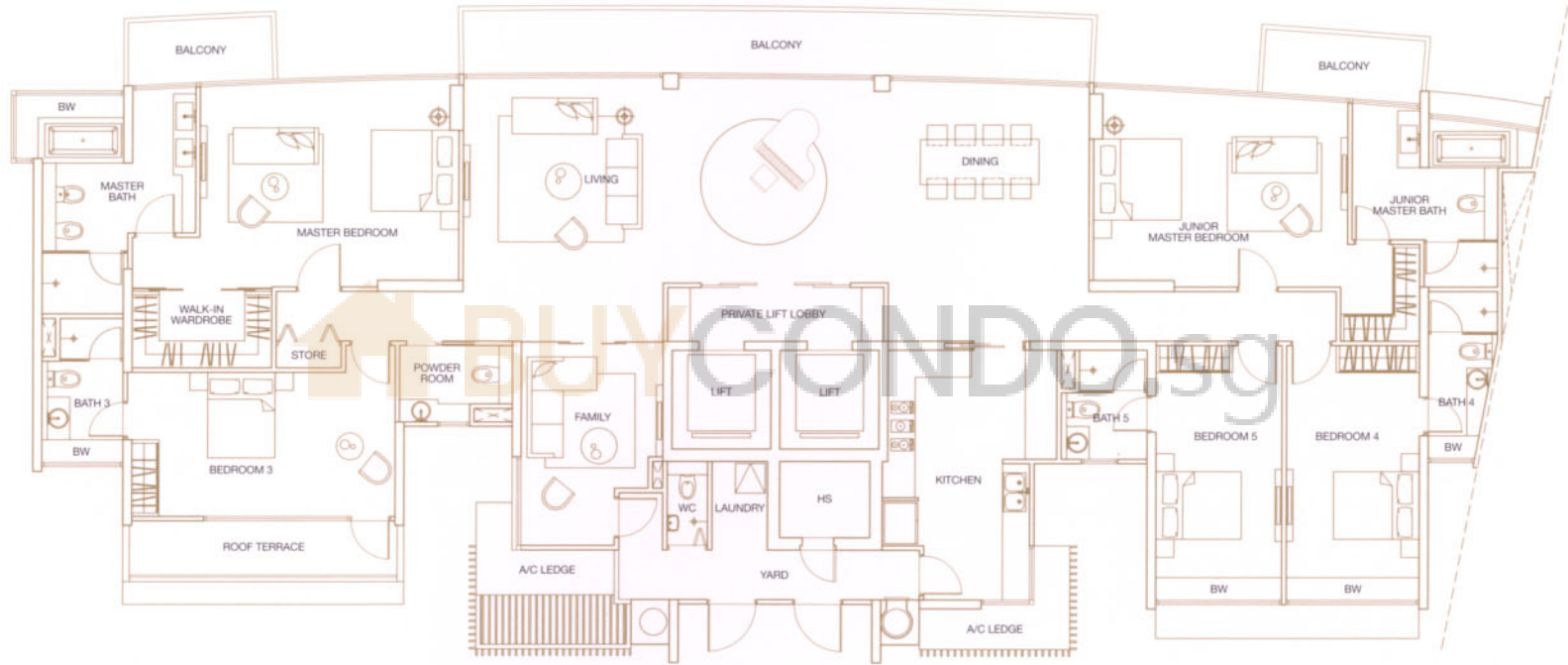


411 sq.m.  
#25-08

All plans are not to scale and subject to change as may be approved by the relevant authorities. Indicated floor areas are approximate and subject to final survey.  
Note: A/C Ledge - Air-con Ledge, HS - Household Shelter, BW - Bay Window.



# TYPE SPH2



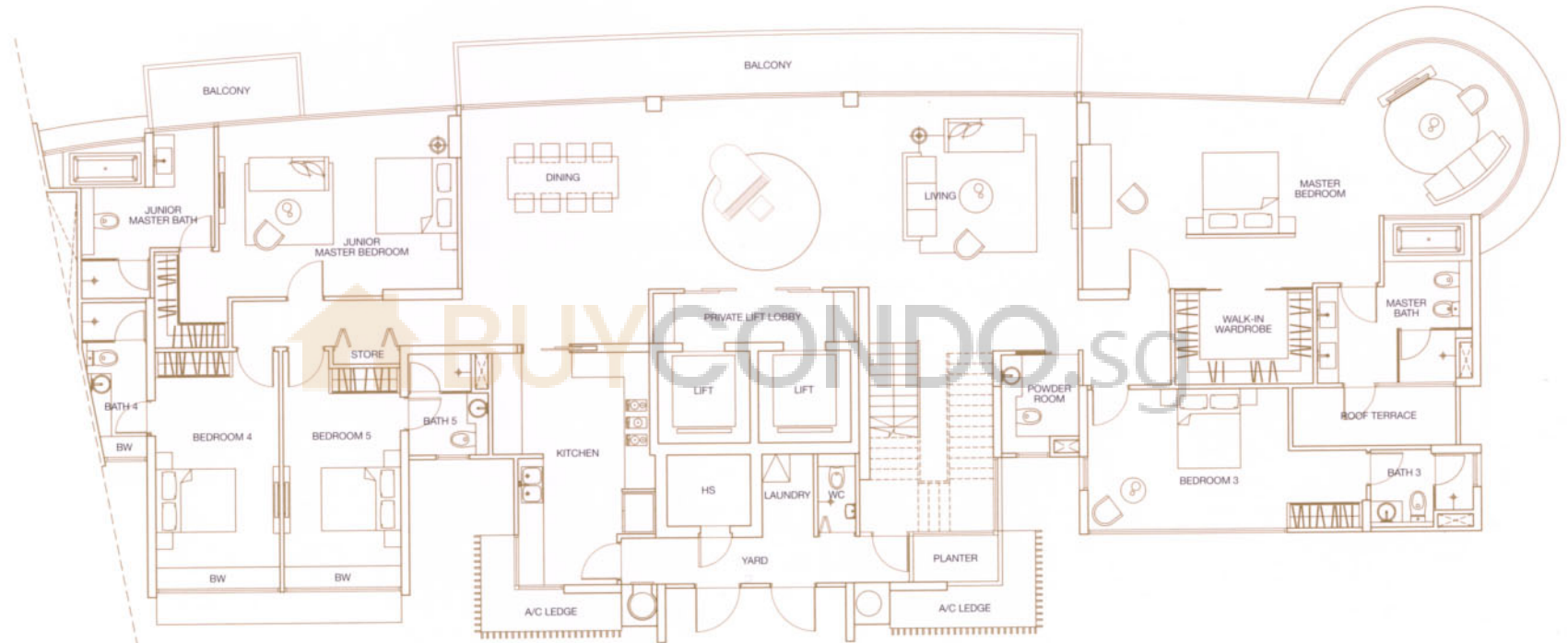
366 sq.m.  
#25-06

All plans are not to scale and subject to change as may be approved by the relevant authorities. Indicated floor areas are approximate and subject to final survey.  
Note: A/C Ledge - Air-con Ledge, HS - Household Shelter, BW - Bay Window.





# TYPE PH1



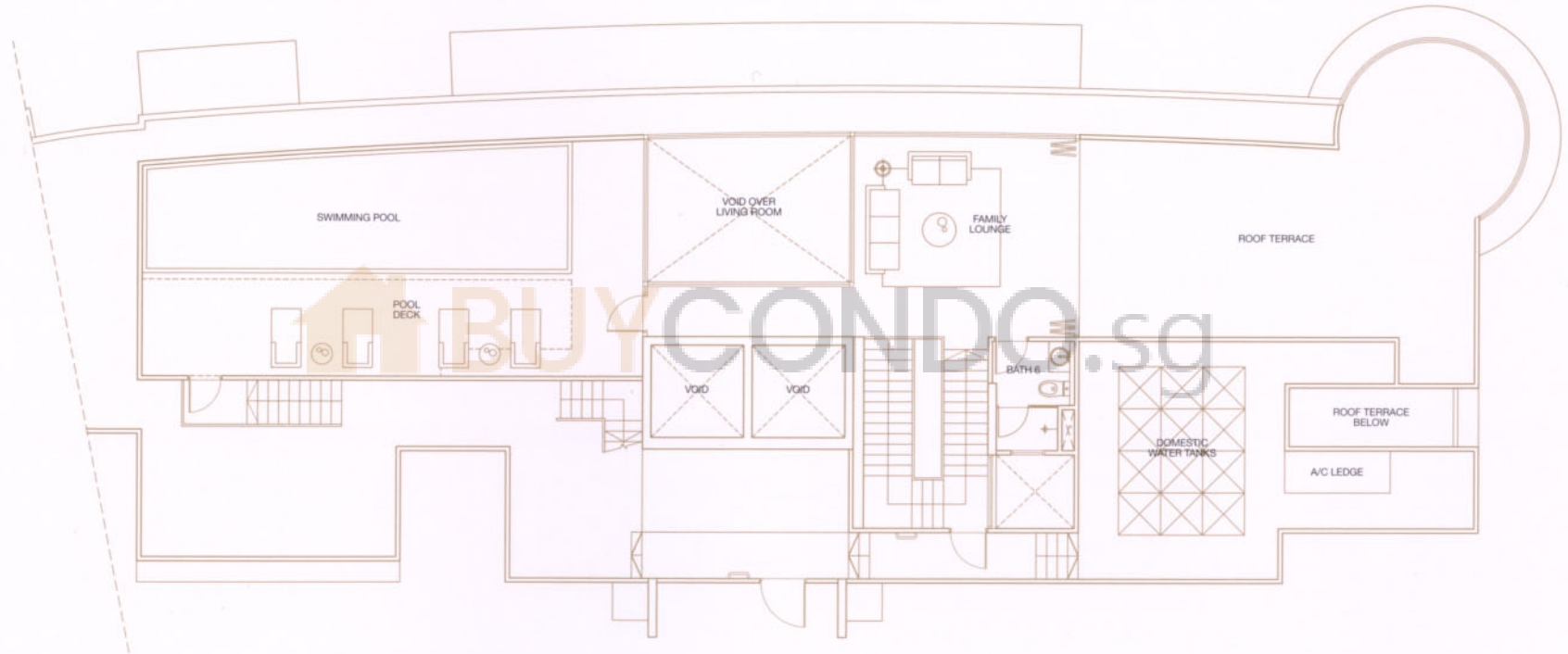
(Lower Level)

383 sq.m.  
#26-08

All plans are not to scale and subject to change as may be approved by the relevant authorities. Indicated floor areas are approximate and subject to final survey.  
Note: A/C Ledge - Air-con Ledge, HS - Household Shelter, BW - Bay Window.



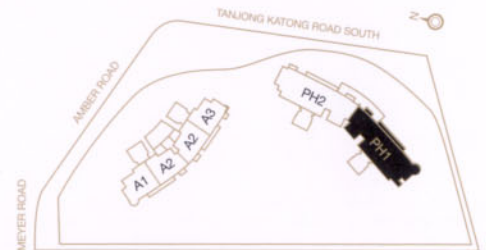
# TYPE PH1



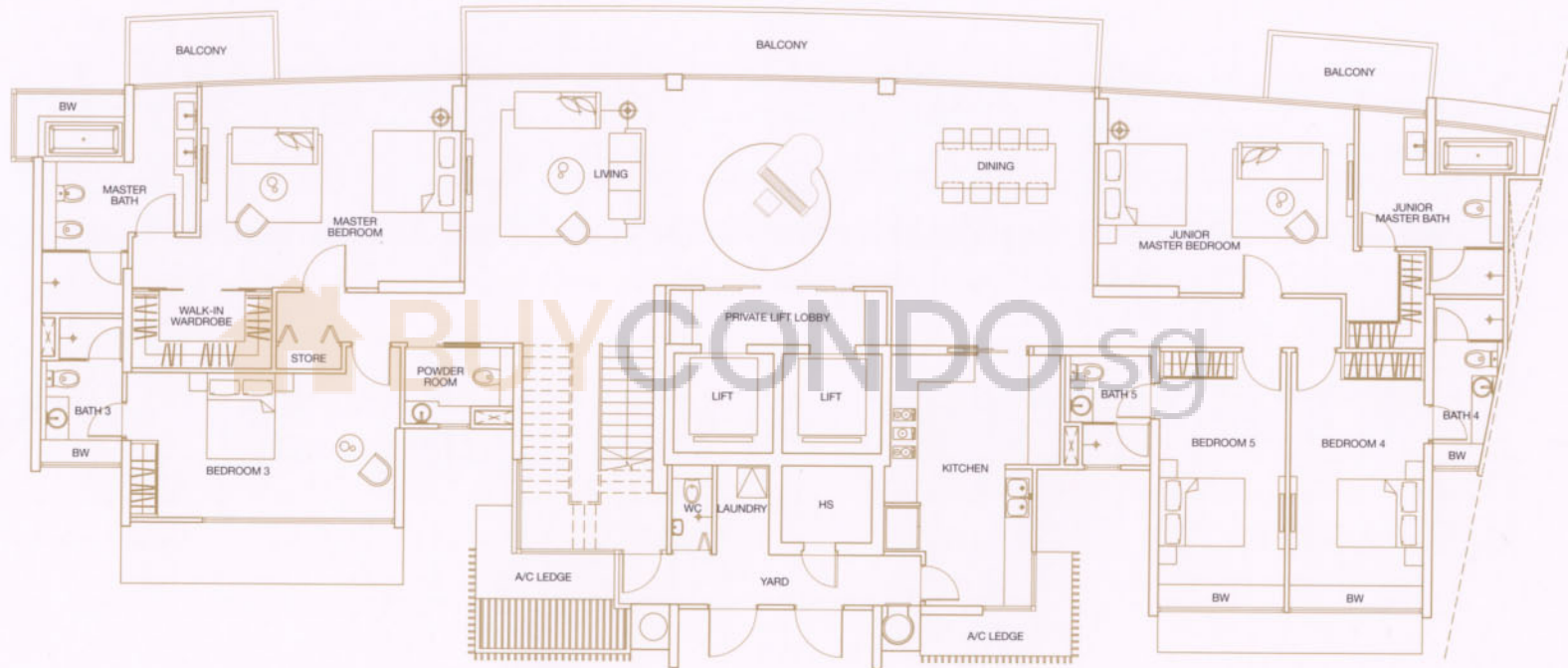
(Upper Level)

193 sq m

All plans are not to scale and subject to change as may be approved by the relevant authorities. Indicated floor areas are approximate and subject to final survey.  
Note: A/C Ledge - Air-con Ledge, HS - Household Shelter. Dotted line at Pool Deck indicates filtration pump room and balancing tank below Pool Deck.



# TYPE PH2



(Lower Level)

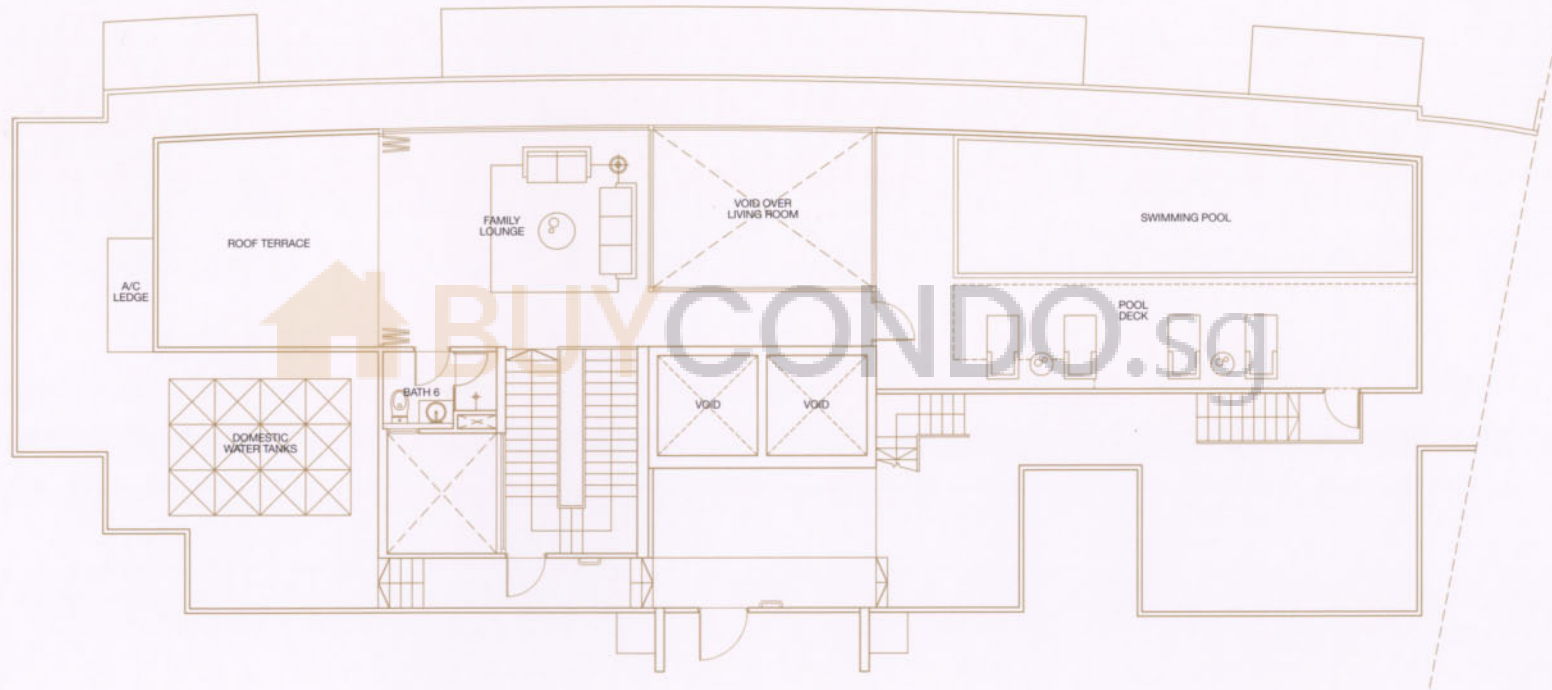
358 sq.m.

#26-06

All plans are not to scale and subject to change as may be approved by the relevant authorities. Indicated floor areas are approximate and subject to final survey.  
Note: A/C Ledge - Air-con Ledge, HS - Household Shelter, BW - Bay Window.



# TYPE PH2



(Upper Level)

163 sq m

All plans are not to scale and subject to change as may be approved by the relevant authorities. Indicated floor areas are approximate and subject to final survey.  
Note: A/C Ledge - Air-con Ledge, HS - Household Shelter. Dotted line at Pool Deck indicates filtration pump room and balancing tank below Pool Deck.

