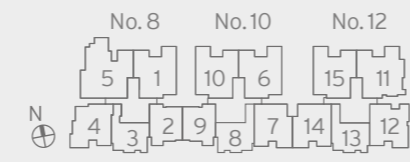


DIAGRAMMATIC CHART

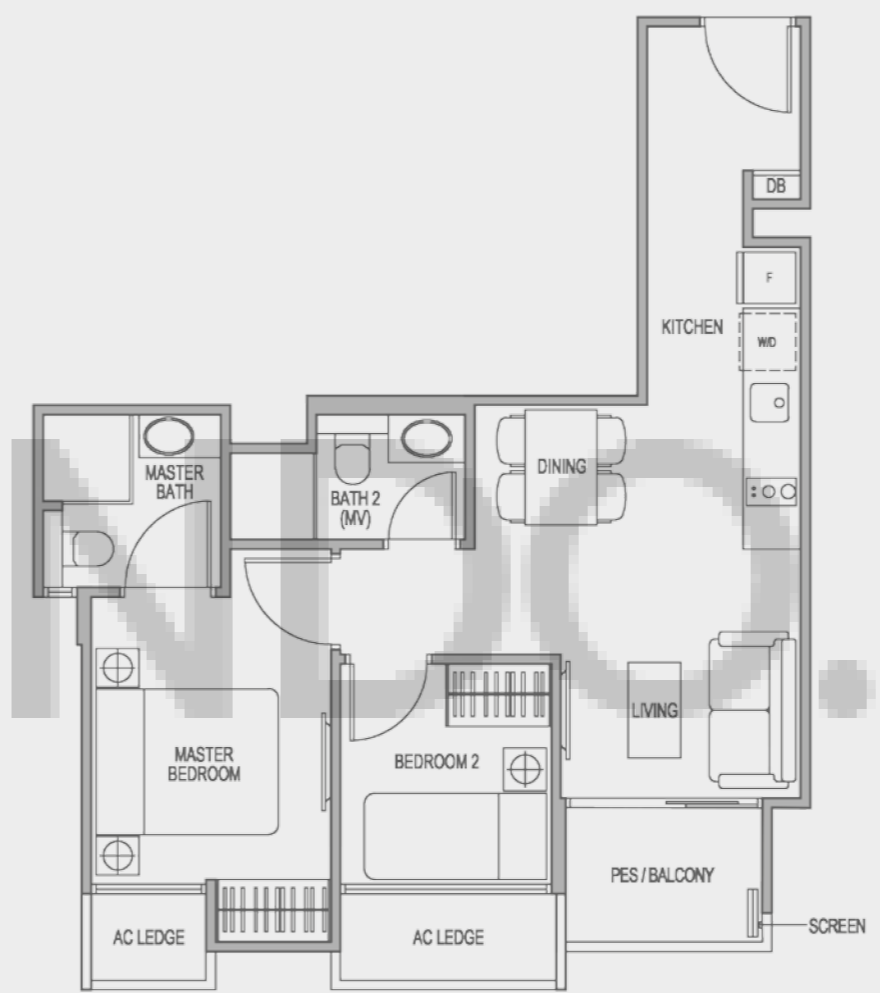
	NO. 8					NO. 10					NO. 12				
Unit	1	2	3	4	5	6	7	8	9	10	11	12	13	14	15
Roof	Sky Garden														
Level 05	Type B2a 872 sqft	Type A2 560 sqft	Type A1a 560 sqft	Type B1a 721 sqft	Type C 1,152 sqft	Type B2b 872 sqft	Type B1 721 sqft	Type A1 560 sqft	Type A2 560 sqft	Type B2 872 sqft	Type B3 947 sqft	Type B1b 721 sqft	Type A1 560 sqft	Type B1 721 sqft	Type B2 872 sqft
Level 04	Type B2a 872 sqft	Type A2 560 sqft	Type A1a 560 sqft	Type B1a 721 sqft	Type C 1,152 sqft	Type B2b 872 sqft	Type B1 721 sqft	Type A1 560 sqft	Type A2 560 sqft	Type B2 872 sqft	Type B3 947 sqft	Type B1b 721 sqft	Type A1 560 sqft	Type B1 721 sqft	Type B2 872 sqft
Level 02	Type B2a 872 sqft	Type A2 560 sqft	Type A1a 560 sqft	Type B1a 721 sqft	Type C 1,152 sqft	Type B2b 872 sqft	Type B1 721 sqft	Type A1 560 sqft	Type A2 560 sqft	Type B2 872 sqft	Type B3 947 sqft	Type B1b 721 sqft	Type A1 560 sqft	Type B1 721 sqft	Type B2 872 sqft
Level 02	Type B2a 872 sqft	Type A2 560 sqft	Type A1a 560 sqft	Type B1a 721 sqft	Type C 1,152 sqft	Type B2b 872 sqft	Type B1 721 sqft	Type A1 560 sqft	Type A2 560 sqft	Type B2 872 sqft	Type B3 947 sqft	Type B1b 721 sqft	Type A1 560 sqft	Type B1 721 sqft	Type B2 872 sqft
Level 01	Type B2aG 872 sqft	Type A2G 560 sqft	Type A1aG 560 sqft	Type B1aG 721 sqft		Type B2bG 872 sqft	Type B1G 721 sqft	Type A1G 560 sqft	Type A2G 560 sqft	Type B2G 872 sqft	Type B3G 947 sqft	Type B1bG 721 sqft	Type A1G 560 sqft	Type B1G 721 sqft	Type B2G 872 sqft

- 2-bedroom
- 3-bedroom Compact
- 3-bedroom
- 3-bedroom + Utility
- 4-bedroom

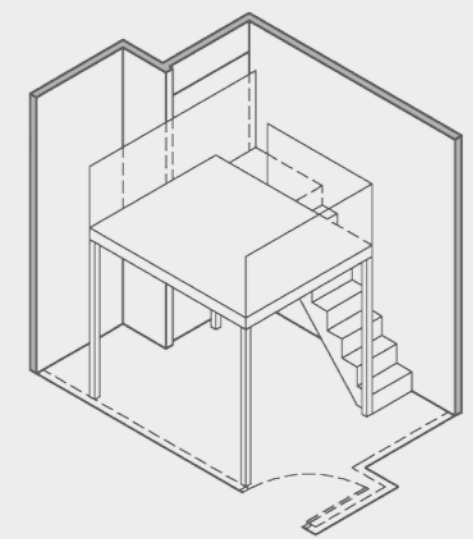


■ Type A1/A1G
2-Bedrm

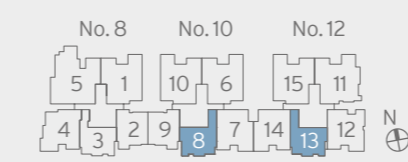
560 sqft / 52 sqm
 A1G with PES : #01-08, #01-13 (mirror)
 A1 with Balcony : #02-08 to #05-08
 #02-13 to #05-13 (mirror)



Suggested Furniture Loft
 (Only applicable to Master Bedroom with maximum area of 5 sqm)



Suggested Furniture Loft - Isometric View
 (Only applicable to Master Bedroom with maximum area of 5 sqm)



All floor areas indicated are inclusive of AC Ledge, Balcony and Private Enclosed Space (PES), where applicable. All floor areas are estimates only and subject to final survey. All floor plans are not to scale and are subject to changes as may be required or approved by the relevant authorities. Furniture shown is indicative only and is not provided, please refer to the floor plans in the Sale & Purchase Agreement for details.

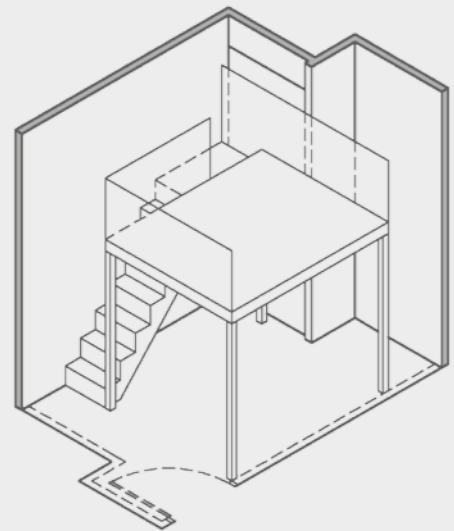
Type A1a/A1aG

2-Bedrm

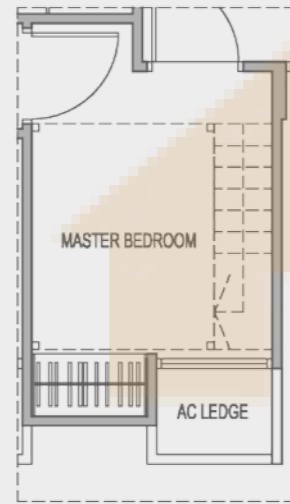
560 sqft / 52 sqm

A1aG with PES : #01-03

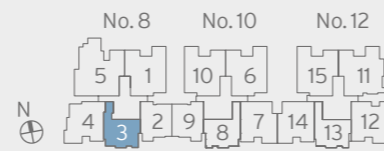
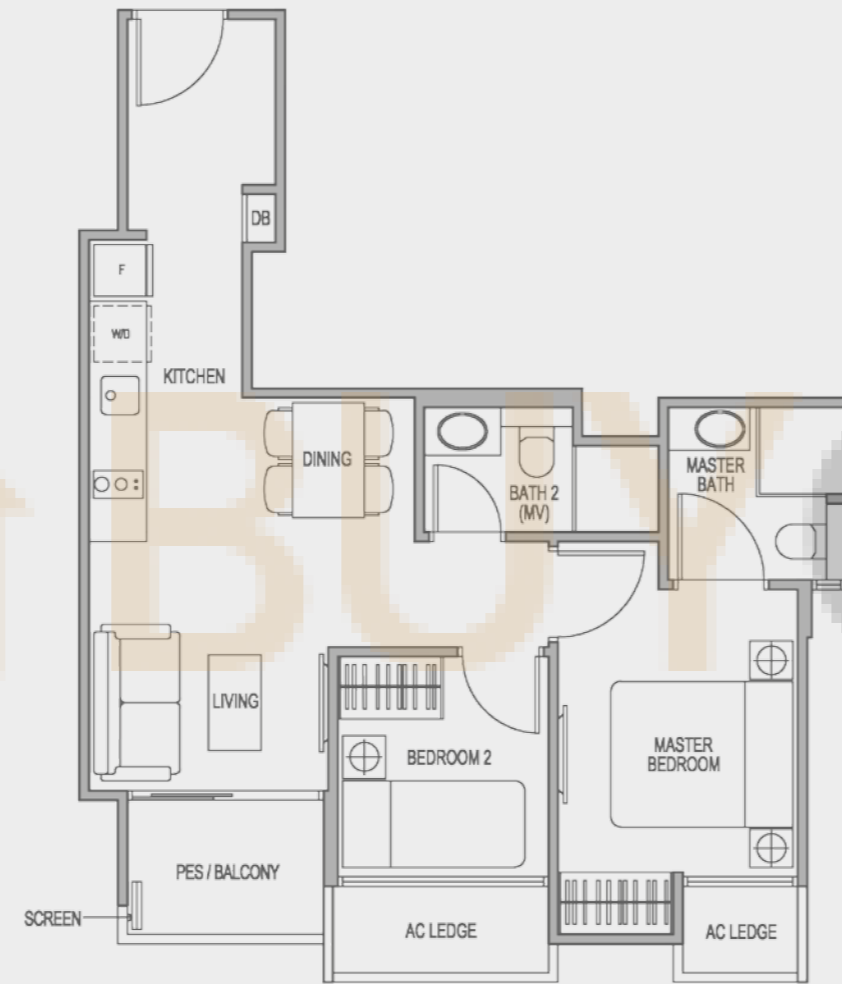
A1a with Balcony : #02-03 to #05-03



Suggested Furniture Loft - Isometric View
(Only applicable to Master Bedroom with maximum area of 5 sqm)



Suggested Furniture Loft
(Only applicable to Master Bedroom with maximum area of 5 sqm)



All floor areas indicated are inclusive of AC Ledge, Balcony and Private Enclosed Space (PES), where applicable. All floor areas are estimates only and subject to final survey. All floor plans are not to scale and are subject to changes as may be required or approved by the relevant authorities. Furniture shown is indicative only and is not provided, please refer to the floor plans in the Sale & Purchase Agreement for details.

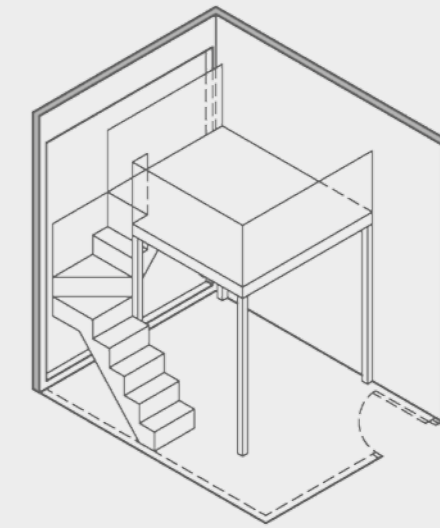
Type A2/A2G

2-Bedrm

560 sqft / 52 sqm

A2G with PES : #01-02, #01-09 (mirror)

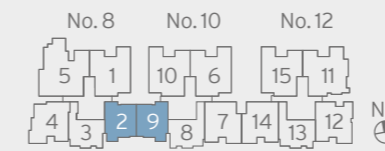
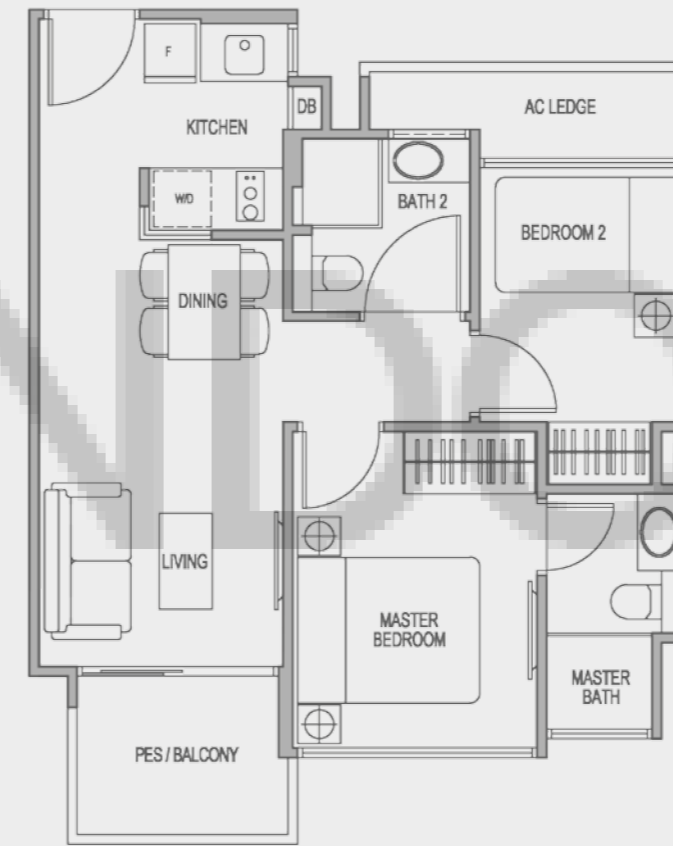
A2 with Balcony : #02-02 to #05-02
#02-09 to #05-09 (mirror)



Suggested Furniture Loft - Isometric View
(Only applicable to Master Bedroom with maximum area of 5 sqm)



Suggested Furniture Loft
(Only applicable to Master Bedroom with maximum area of 5 sqm)



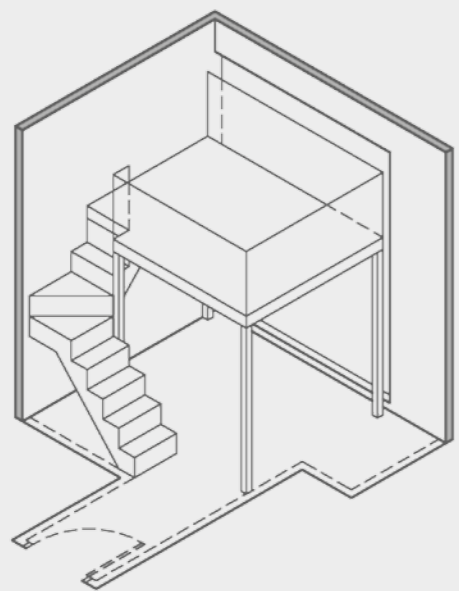
All floor areas indicated are inclusive of AC Ledge, Balcony and Private Enclosed Space (PES), where applicable. All floor areas are estimates only and subject to final survey. All floor plans are not to scale and are subject to changes as may be required or approved by the relevant authorities. Furniture shown is indicative only and is not provided, please refer to the floor plans in the Sale & Purchase Agreement for details.

Type B1/B1G

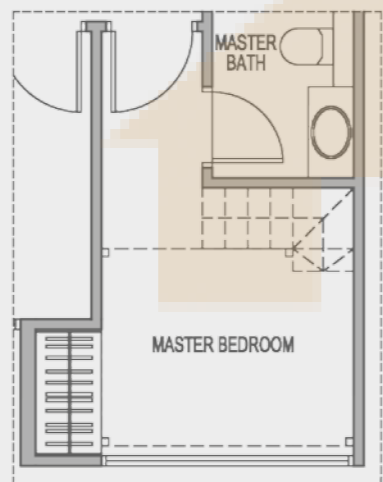
3-Bedrm Compact

721 sqft / 67 sqm

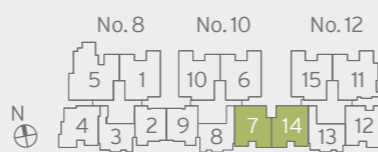
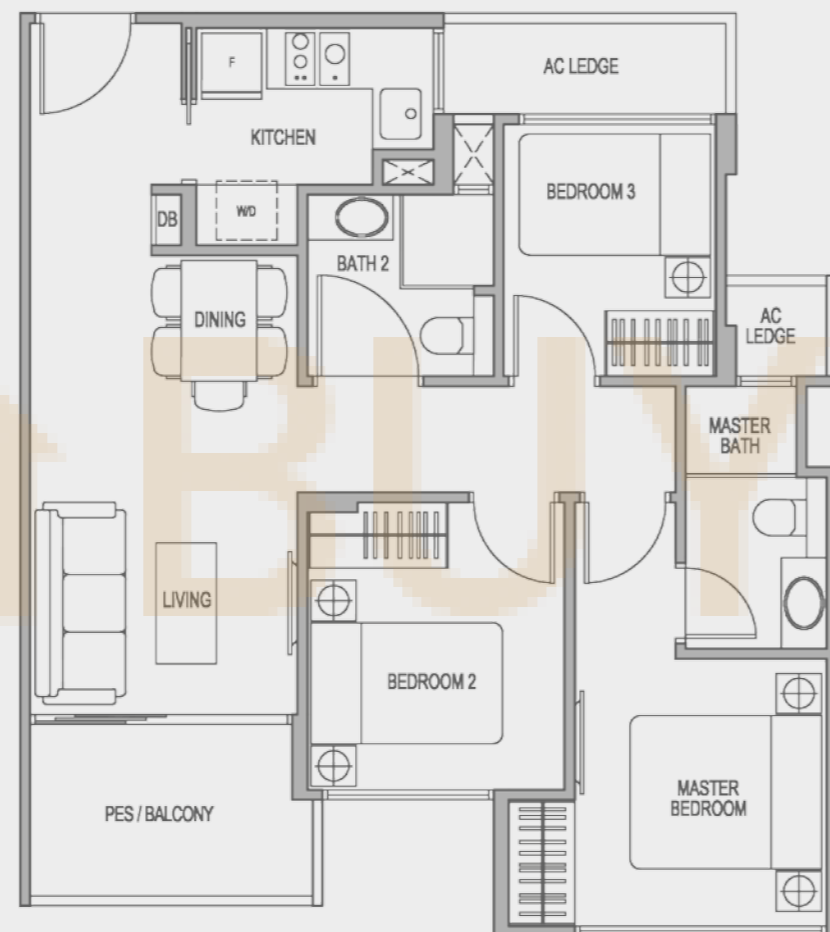
B1G with PES : #01-07, #01-14 (mirror)
 B1 with Balcony : #02-07 to #05-07
 #02-14 to #05-14 (mirror)



Suggested Furniture Loft - Isometric View
 (Only applicable to Master Bedroom with maximum area of 5 sqm)



Suggested Furniture Loft
 (Only applicable to Master Bedroom with maximum area of 5 sqm)



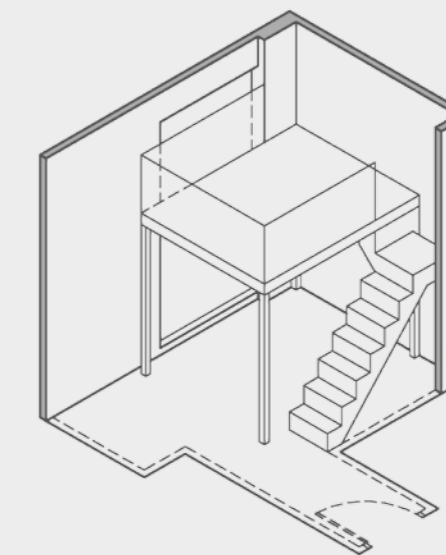
All floor areas indicated are inclusive of AC Ledge, Balcony and Private Enclosed Space (PES), where applicable. All floor areas are estimates only and subject to final survey. All floor plans are not to scale and are subject to changes as may be required or approved by the relevant authorities. Furniture shown is indicative only and is not provided, please refer to the floor plans in the Sale & Purchase Agreement for details.

Type B1a/B1aG

3-Bedrm Compact

721 sqft / 67 sqm

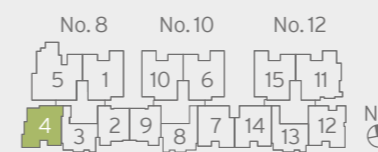
B1aG with PES : #01-04
 B1a with Balcony : #02-04 to #05-04



Suggested Furniture Loft - Isometric View
 (Only applicable to Master Bedroom with maximum area of 5 sqm)



Suggested Furniture Loft
 (Only applicable to Master Bedroom with maximum area of 5 sqm)



All floor areas indicated are inclusive of AC Ledge, Balcony and Private Enclosed Space (PES), where applicable. All floor areas are estimates only and subject to final survey. All floor plans are not to scale and are subject to changes as may be required or approved by the relevant authorities. Furniture shown is indicative only and is not provided, please refer to the floor plans in the Sale & Purchase Agreement for details.

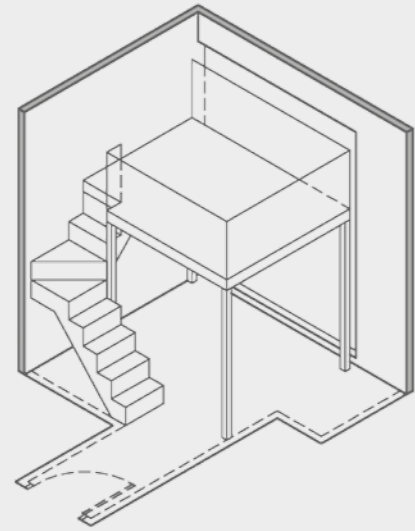
Type B1b/B1bG

3-Bedrm Compact

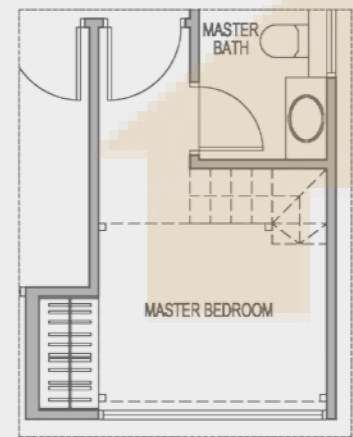
721 sqft / 67 sqm

B1bG with PES : #01-12

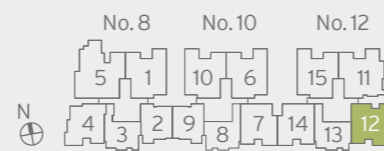
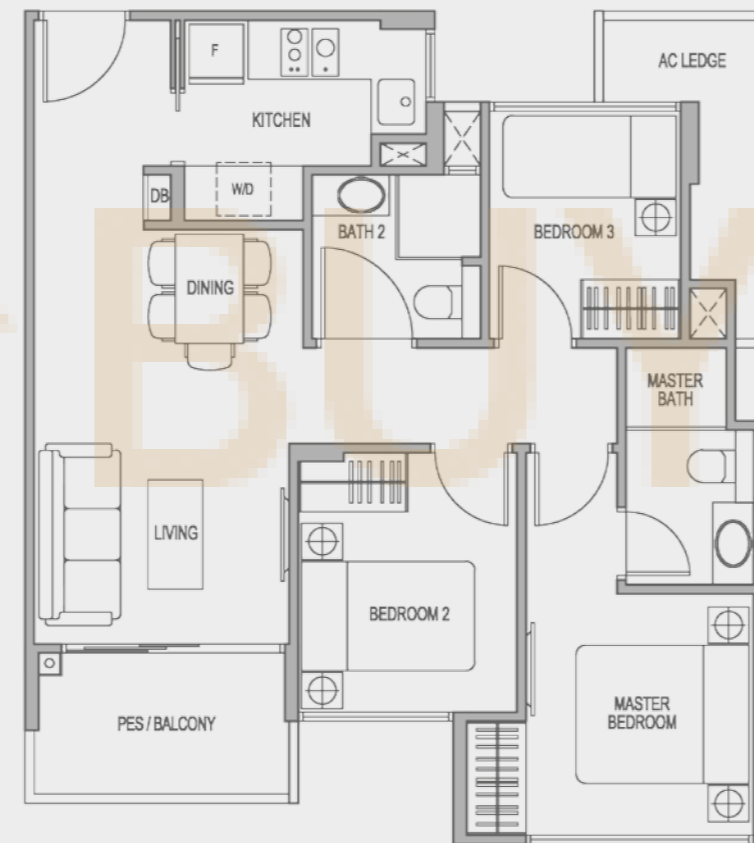
B1b with Balcony : #02-12 to #05-12



Suggested Furniture Loft - Isometric View
(Only applicable to Master Bedroom with maximum area of 5 sqm)



Suggested Furniture Loft
(Only applicable to Master Bedroom with maximum area of 5 sqm)



All floor areas indicated are inclusive of AC Ledge, Balcony and Private Enclosed Space (PES), where applicable. All floor areas are estimates only and subject to final survey. All floor plans are not to scale and are subject to changes as may be required or approved by the relevant authorities. Furniture shown is indicative only and is not provided, please refer to the floor plans in the Sale & Purchase Agreement for details.

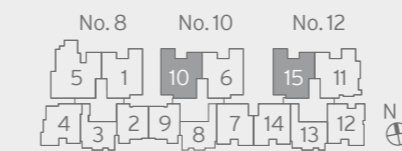
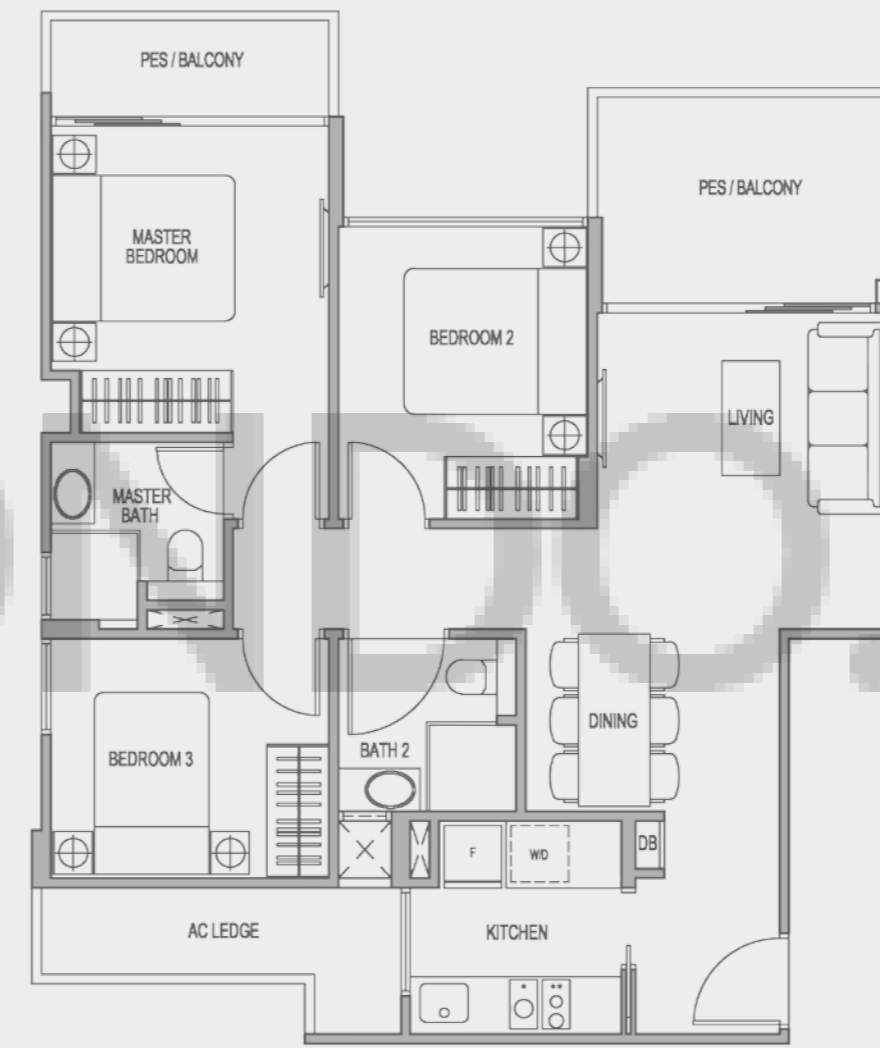
Type B2/B2G

3-Bedrm

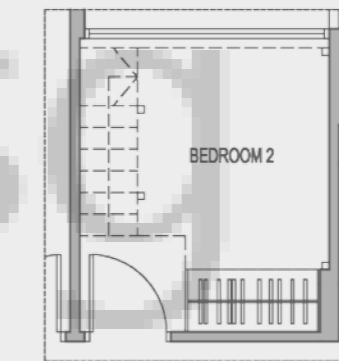
872 sqft / 81 sqm

B2G with PES : #01-10 & #01-15

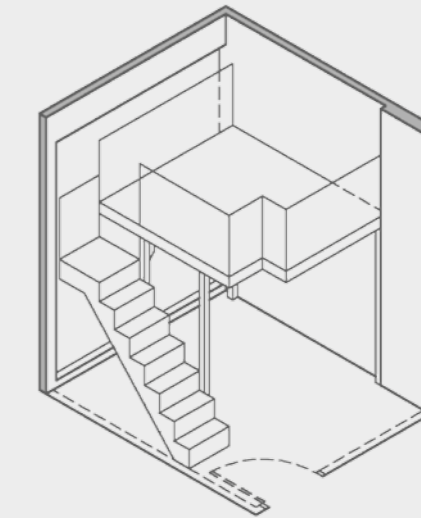
B2 with Balcony : #02-10 to #05-10
#02-15 to #05-15



All floor areas indicated are inclusive of AC Ledge, Balcony and Private Enclosed Space (PES), where applicable. All floor areas are estimates only and subject to final survey. All floor plans are not to scale and are subject to changes as may be required or approved by the relevant authorities. Furniture shown is indicative only and is not provided, please refer to the floor plans in the Sale & Purchase Agreement for details.



Suggested Furniture Loft
(Only applicable to Bedroom 2 with maximum area of 5 sqm)



Suggested Furniture Loft - Isometric View
(Only applicable to Bedroom 2 with maximum area of 5 sqm)

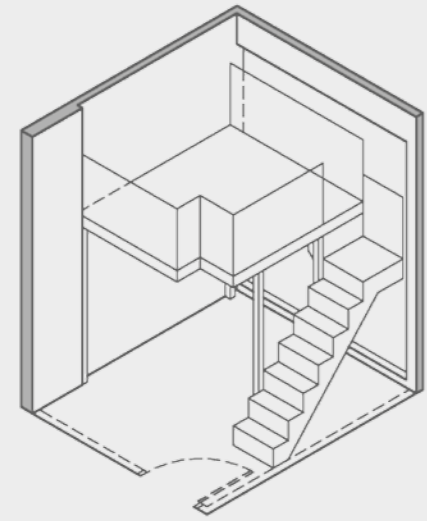
■ Type B2a/B2aG

3-Bedrm

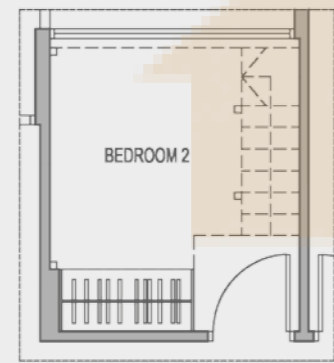
872 sqft / 81 sqm

B2aG with PES : #01-01

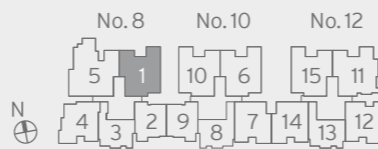
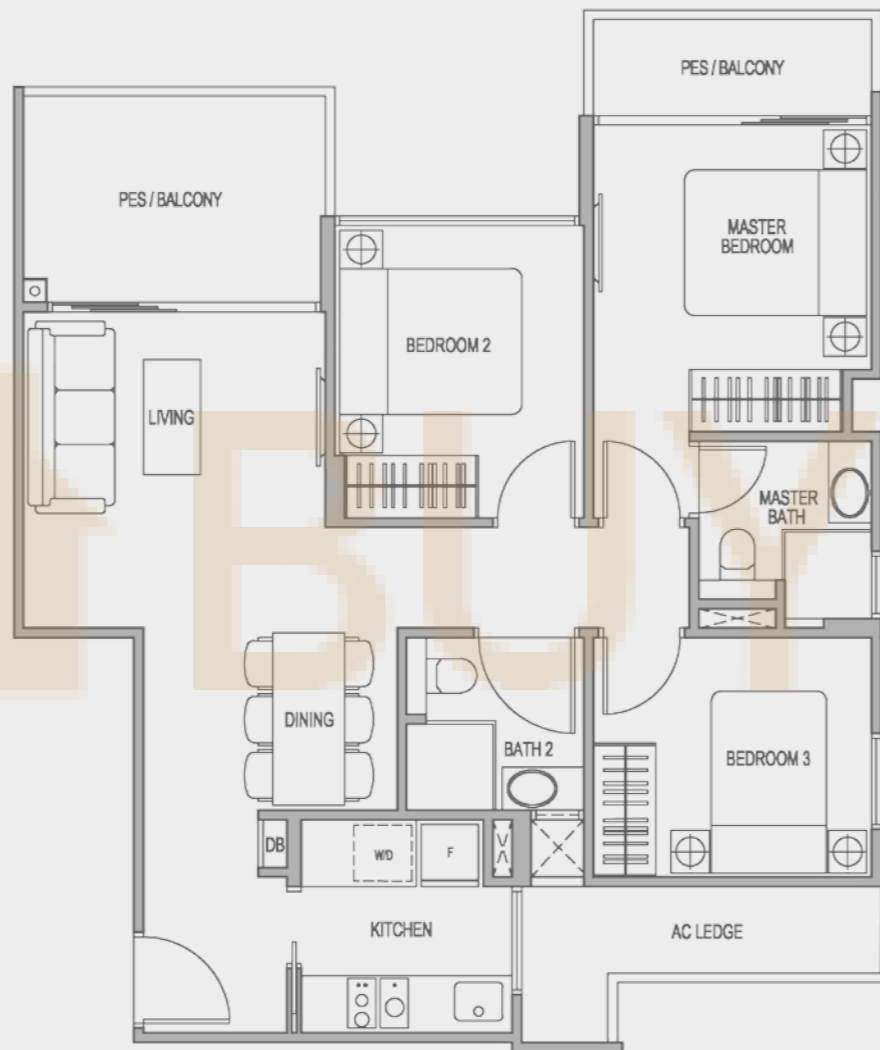
B2a with Balcony : #02-01 to #05-01



Suggested Furniture Loft - Isometric View
(Only applicable to Bedroom 2 with maximum area of 5 sqm)



Suggested Furniture Loft
(Only applicable to Bedroom 2 with maximum area of 5 sqm)



All floor areas indicated are inclusive of AC Ledge, Balcony and Private Enclosed Space (PES), where applicable. All floor areas are estimates only and subject to final survey. All floor plans are not to scale and are subject to changes as may be required or approved by the relevant authorities. Furniture shown is indicative only and is not provided, please refer to the floor plans in the Sale & Purchase Agreement for details.

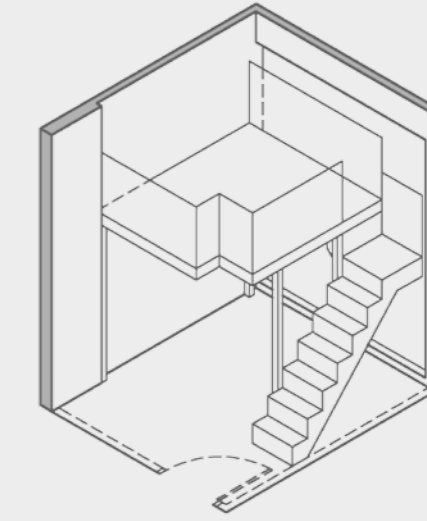
■ Type B2b/B2bG

3-Bedrm

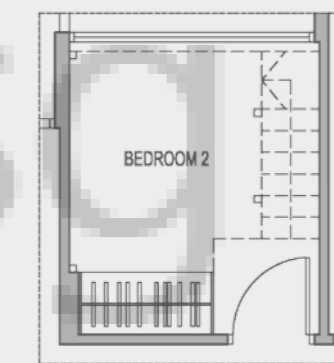
872 sqft / 81 sqm

B2bG with PES : #01-06

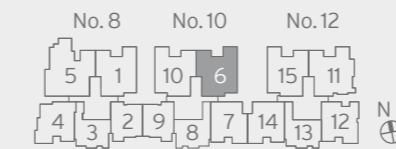
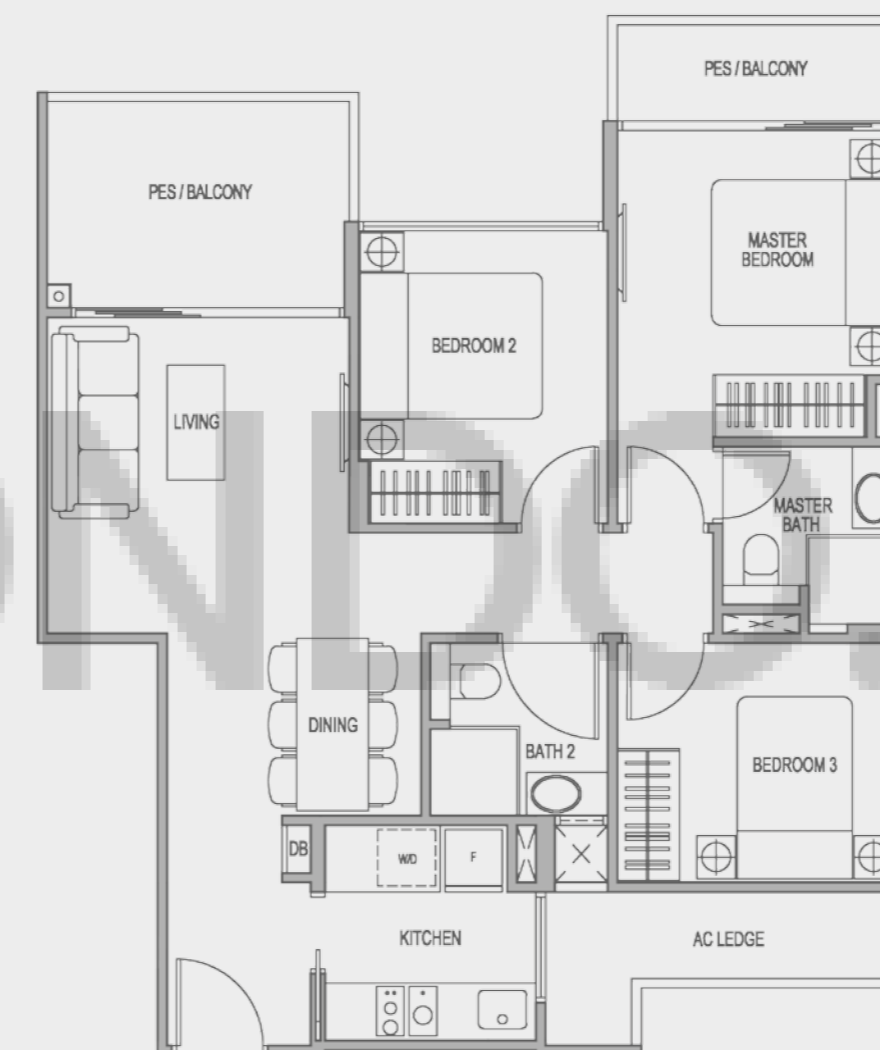
B2b with Balcony : #02-06 to #05-06



Suggested Furniture Loft - Isometric View
(Only applicable to Bedroom 2 with maximum area of 5 sqm)



Suggested Furniture Loft
(Only applicable to Bedroom 2 with maximum area of 5 sqm)



All floor areas indicated are inclusive of AC Ledge, Balcony and Private Enclosed Space (PES), where applicable. All floor areas are estimates only and subject to final survey. All floor plans are not to scale and are subject to changes as may be required or approved by the relevant authorities. Furniture shown is indicative only and is not provided, please refer to the floor plans in the Sale & Purchase Agreement for details.

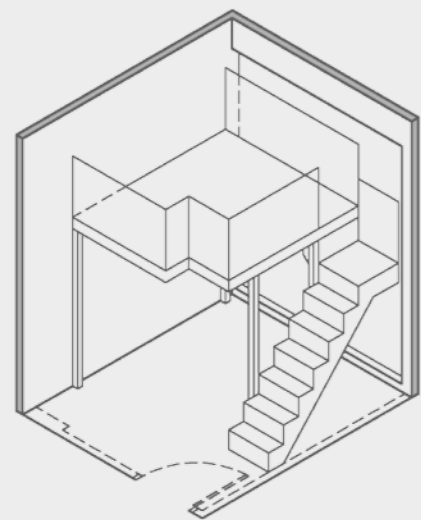
Type B3/B3G

3-Bedrm + Utility

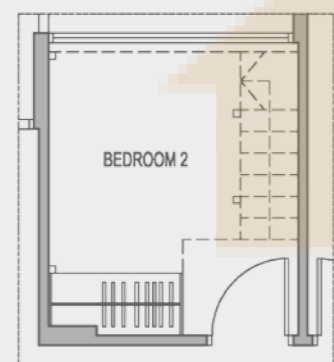
947 sqft / 88 sqm

B3G with PES : #01-11

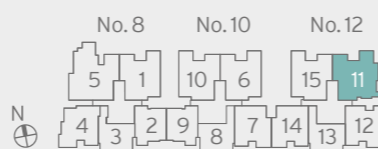
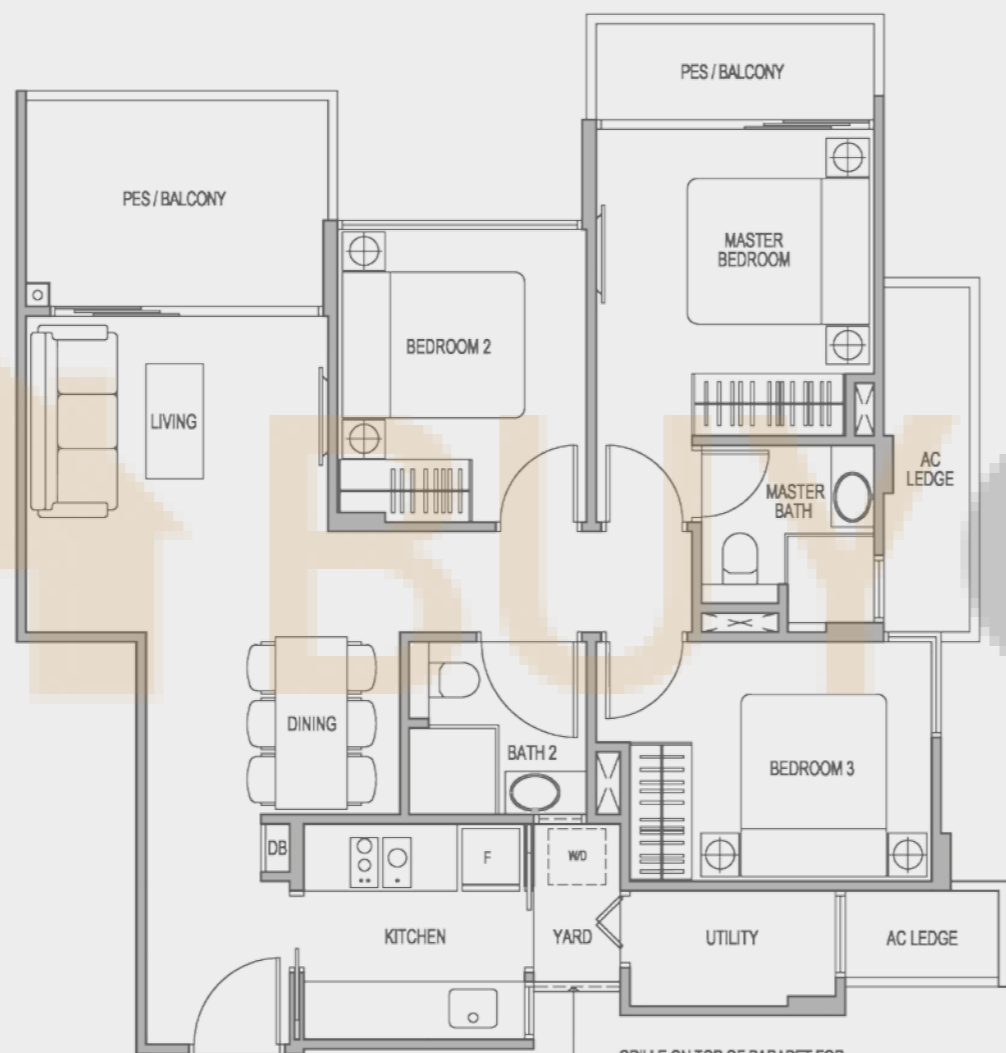
B3 with Balcony : #02-11 to #05-11



Suggested Furniture Loft - Isometric View
(Only applicable to Bedroom 2 with maximum area of 5 sqm)



Suggested Furniture Loft
(Only applicable to Bedroom 2 with maximum area of 5 sqm)



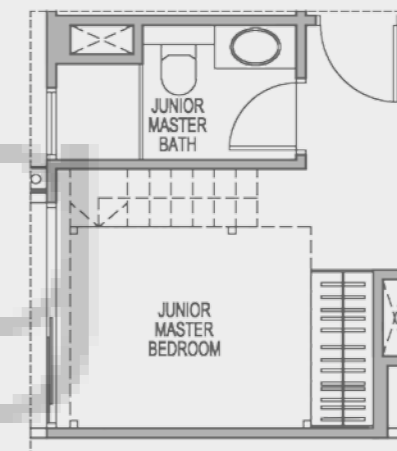
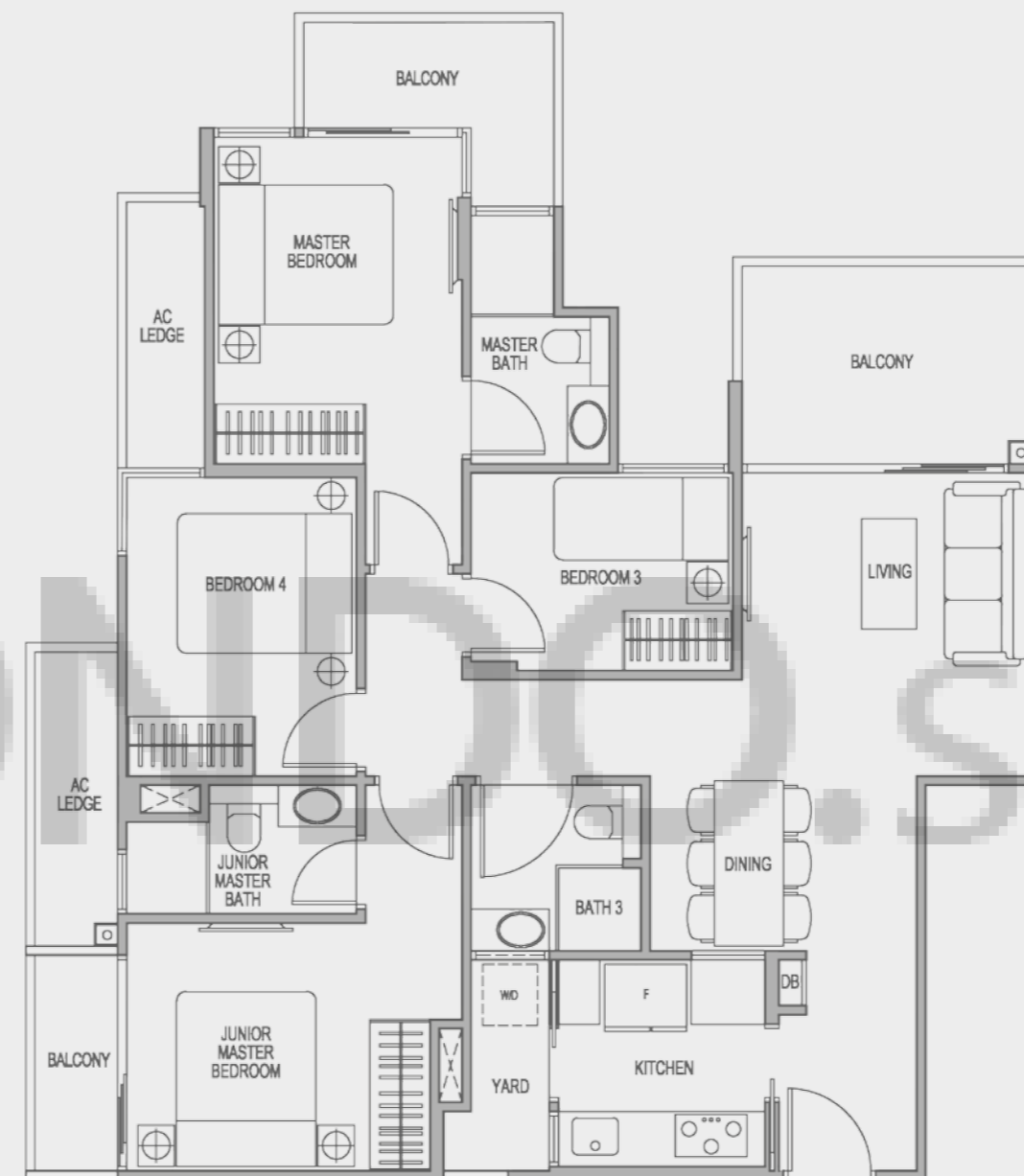
All floor areas indicated are inclusive of AC Ledge, Balcony and Private Enclosed Space (PES), where applicable. All floor areas are estimates only and subject to final survey. All floor plans are not to scale and are subject to changes as may be required or approved by the relevant authorities. Furniture shown is indicative only and is not provided, please refer to the floor plans in the Sale & Purchase Agreement for details.

Type C

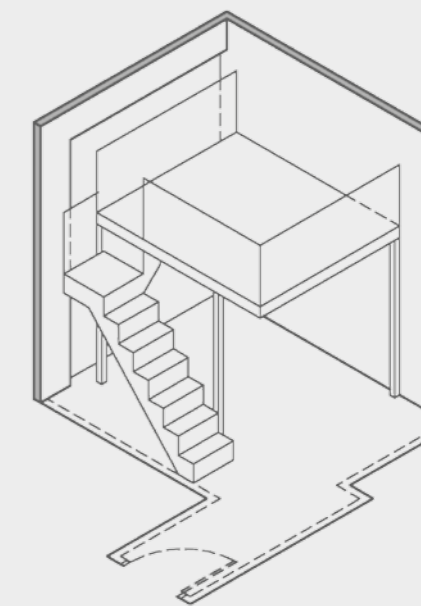
4-Bedrm

1,152 sqft / 107 sqm

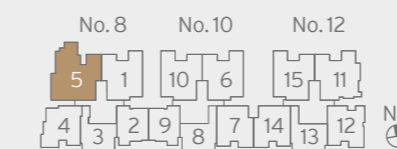
#02-05 to #05-05



Suggested Furniture Loft
(Only applicable to Junior Master Bedroom with maximum area of 5 sqm)



Suggested Furniture Loft - Isometric View
(Only applicable to Junior Master Bedroom with maximum area of 5 sqm)



All floor areas indicated are inclusive of AC Ledge, Balcony and Private Enclosed Space (PES), where applicable. All floor areas are estimates only and subject to final survey. All floor plans are not to scale and are subject to changes as may be required or approved by the relevant authorities. Furniture shown is indicative only and is not provided, please refer to the floor plans in the Sale & Purchase Agreement for details.