

Schematic Chart

2 BEDROOM COMPACT

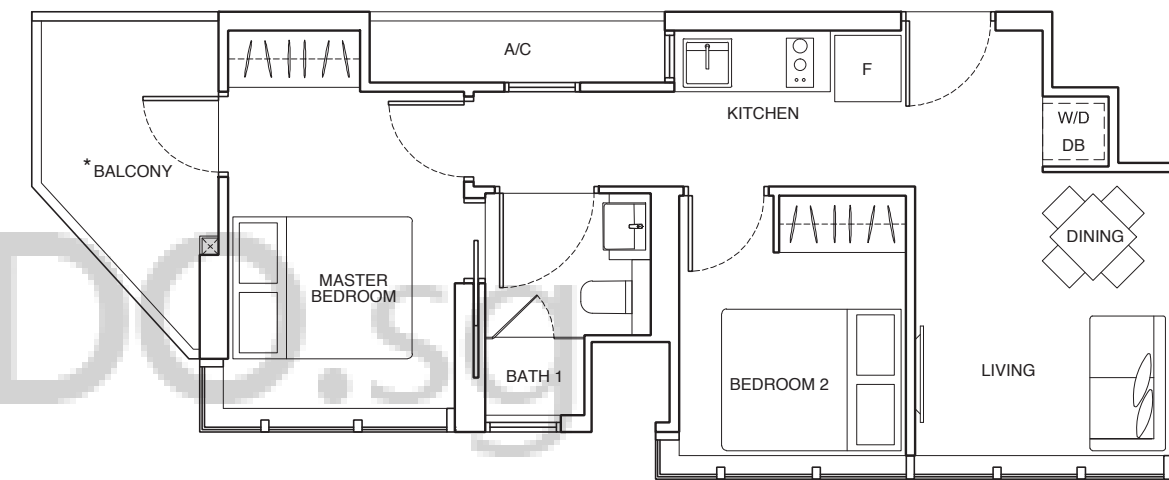
TYPE A1

51 sqm

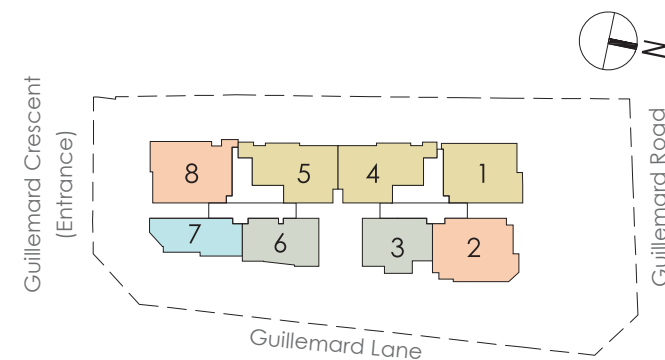
#02-07**

#03-07 to #13-07

ROOF TERRACE	Communal Facilities								
LEVEL 14	C2-P 115 sqm	C4-DK 83 sqm	B2 56 sqm	C1-P 115 sqm	C1-P 115 sqm	B1 56 sqm	A1-P 79 sqm	C3-DK-P 123 sqm	
LEVEL 13	C2 76 sqm	C4-DK 83 sqm	B2 56 sqm	C1 75 sqm	C1 75 sqm	B1 56 sqm	A1 51 sqm	C3-DK 82 sqm	
LEVEL 12	C2 76 sqm	C4-DK 83 sqm	B2 56 sqm	C1 75 sqm	C1 75 sqm	B1 56 sqm	A1 51 sqm	C3-DK 82 sqm	
LEVEL 11	C2 76 sqm	C4-DK 83 sqm	B2 56 sqm	C1 75 sqm	C1 75 sqm	B1 56 sqm	A1 51 sqm	C3-DK 82 sqm	
LEVEL 10	C2 76 sqm	C4-DK 83 sqm	B2 56 sqm	C1 75 sqm	C1 75 sqm	B1 56 sqm	A1 51 sqm	C3-DK 82 sqm	
LEVEL 09	C2 76 sqm	C4-DK 83 sqm	B2 56 sqm	C1 75 sqm	C1 75 sqm	B1 56 sqm	A1 51 sqm	C3-DK 82 sqm	
LEVEL 08	C2 76 sqm	C4-DK 83 sqm	B2 56 sqm	C1 75 sqm	Communal Facilities	C1 75 sqm	B1 56 sqm	A1 51 sqm	C3-DK 82 sqm
LEVEL 07	C2 76 sqm	C4-DK 83 sqm	B2 56 sqm	C1 75 sqm	C1 75 sqm	B1 56 sqm	A1 51 sqm	C3-DK 82 sqm	
LEVEL 06	C2 76 sqm	C4-DK 83 sqm	B2 56 sqm	C1 75 sqm	C1 75 sqm	B1 56 sqm	A1 51 sqm	C3-DK 82 sqm	
LEVEL 05	C2 76 sqm	C4-DK 83 sqm	B2 56 sqm	C1 75 sqm	C1 75 sqm	B1 56 sqm	A1 51 sqm	C3-DK 82 sqm	
LEVEL 04	C2 76 sqm	C4-DK 83 sqm	B2 56 sqm	C1 75 sqm	C1 75 sqm	B1 56 sqm	A1 51 sqm	C3-DK 82 sqm	
LEVEL 03	C2 76 sqm	C4-DK 83 sqm	B2 56 sqm			B1 56 sqm	A1 51 sqm	C3-DK 82 sqm	
LEVEL 02		C4-DK 83 sqm	B2 56 sqm	Communal Facilities		B1 56 sqm	A1 51 sqm		
LEVEL 01	Car Park and Drop-Off								
BASEMENT	Car Park								
UNIT	1	2	3	4	5	6	7	8	



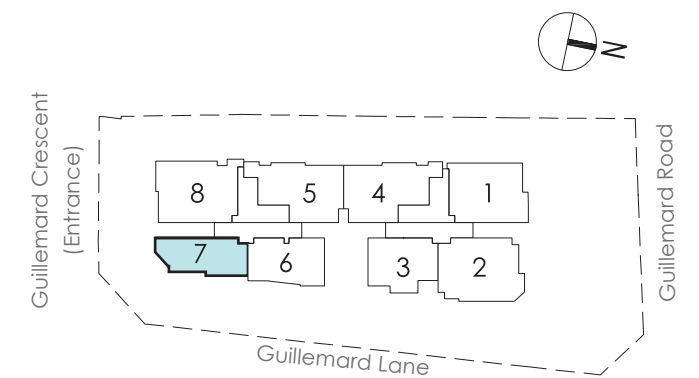
- 2 Bedroom Compact
- 2 Bedroom
- 3 Bedroom
- 3 Bedroom Dual-Key



* The balcony shall not be enclosed unless with the approved balcony screen. For an illustration of the approved balcony screen, please refer to Page 46 of this brochure.

** High ceiling/voids are not to be slabbed over without planning permission (where applicable).

All floor areas indicated are inclusive of AC Ledge, Balcony and Strata Void where applicable. All floor areas are estimate only and subject to final survey. All floor plans are subject to changes as may be required or approved by the relevant authorities.

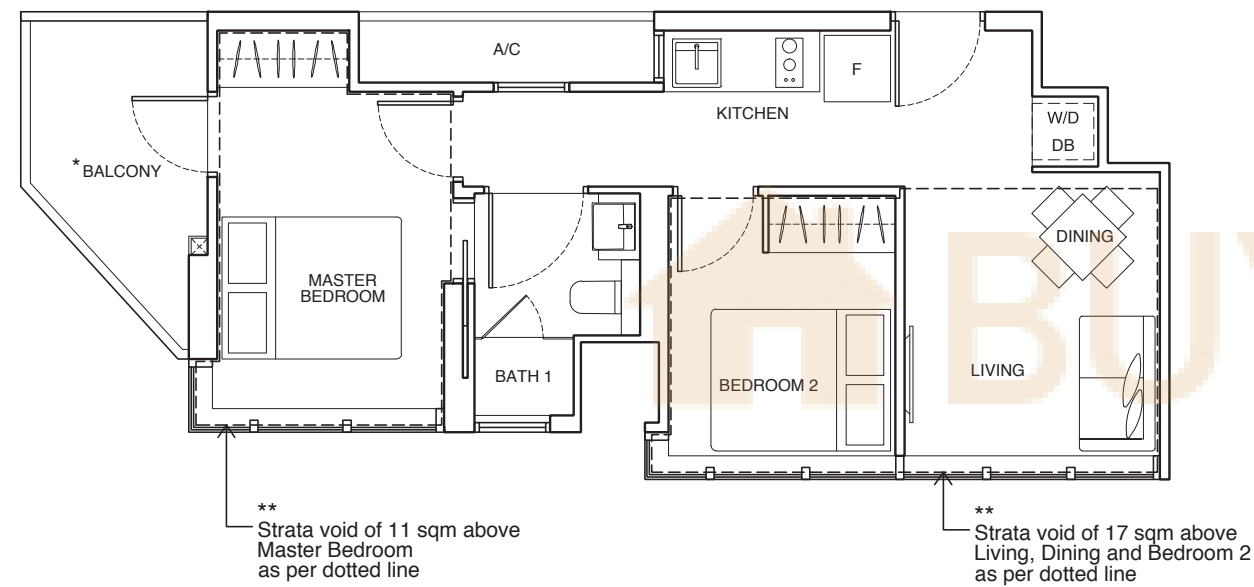


2 BEDROOM COMPACT

TYPE A1-P

79 sqm
(inclusive of void of 28 sqm)

#14-07**



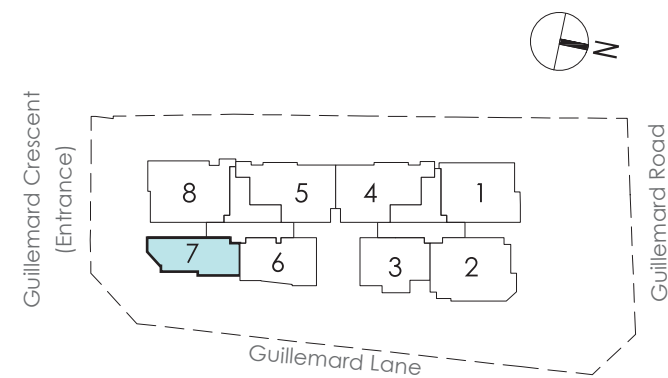
** Strata void of 11 sqm above Master Bedroom as per dotted line

** Strata void of 17 sqm above Living, Dining and Bedroom 2 as per dotted line

* The balcony shall not be enclosed unless with the approved balcony screen. For an illustration of the approved balcony screen, please refer to Page 46 of this brochure.

** High ceiling/voids are not to be slabbed over without planning permission (where applicable).

All floor areas indicated are inclusive of AC Ledge, Balcony and Strata Void where applicable. All floor areas are estimate only and subject to final survey. All floor plans are subject to changes as may be required or approved by the relevant authorities.



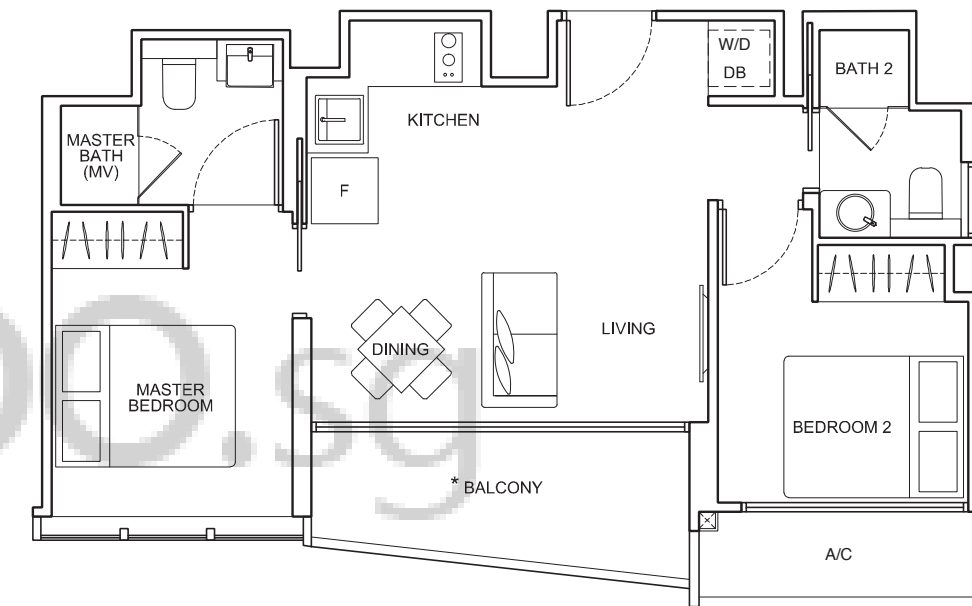
2 BEDROOM

TYPE B1

56 sqm

#02-06**

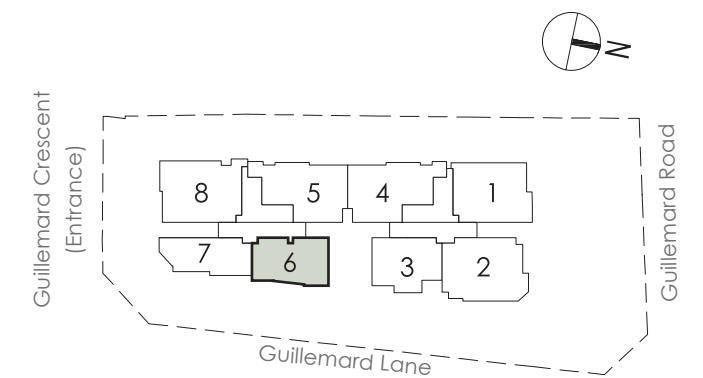
#03-06 to #14-06



* The balcony shall not be enclosed unless with the approved balcony screen. For an illustration of the approved balcony screen, please refer to Page 46 of this brochure.

** High ceiling/voids are not to be slabbed over without planning permission (where applicable).

All floor areas indicated are inclusive of AC Ledge, Balcony and Strata Void where applicable. All floor areas are estimate only and subject to final survey. All floor plans are subject to changes as may be required or approved by the relevant authorities.



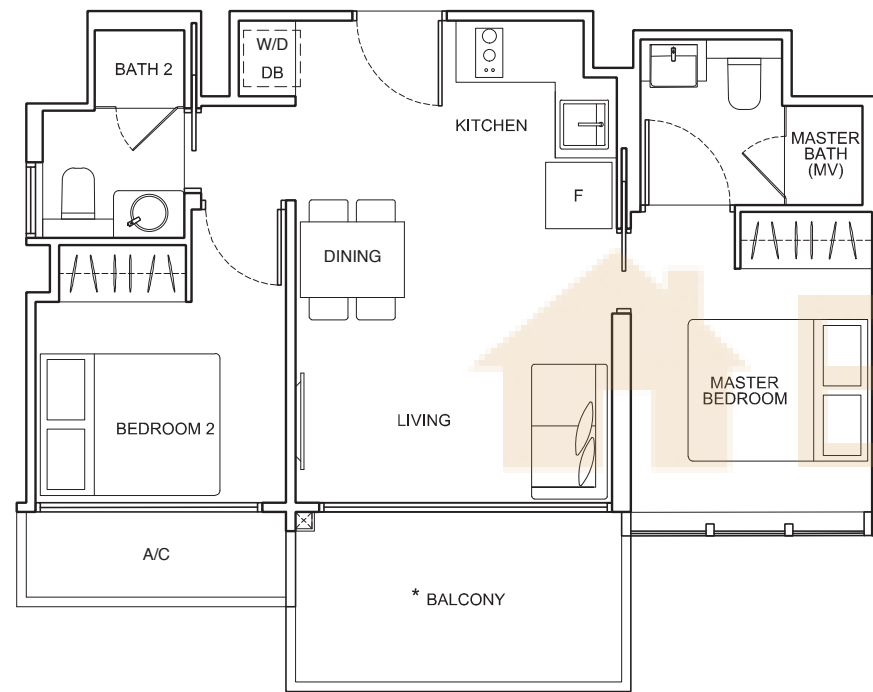
2 BEDROOM

TYPE B2

56 sqm
(inclusive of void of 41 sqm)

#02-03**

#03-03 to #14-03



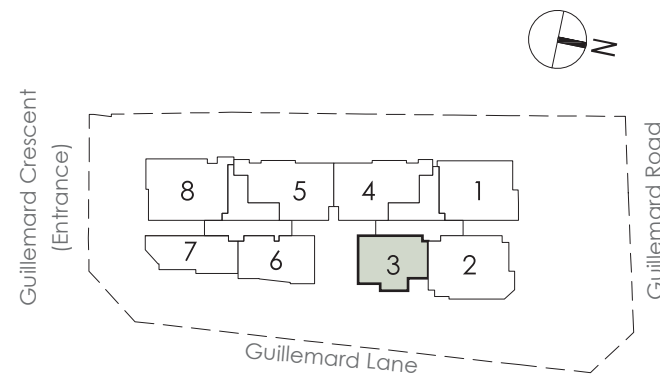
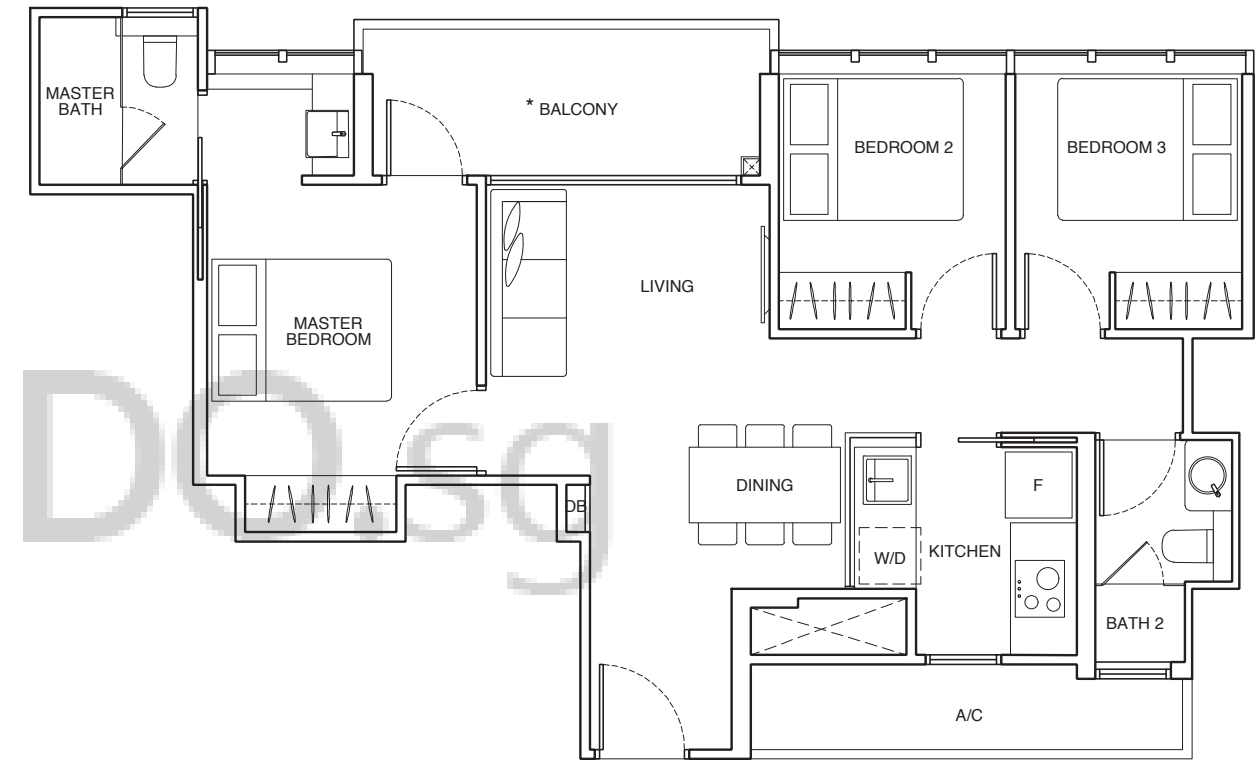
3 BEDROOM

TYPE C1

75 sqm

#04-05 to #13-05

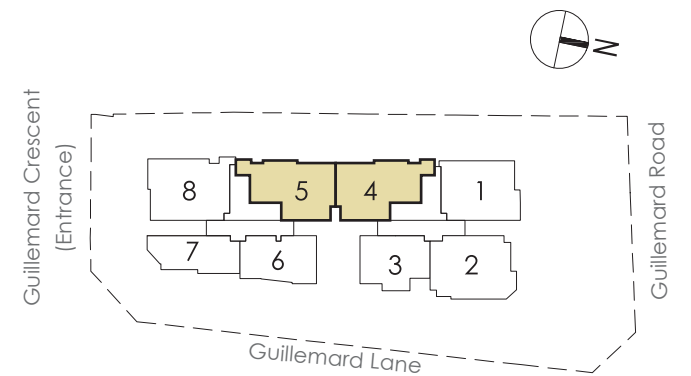
#04-04 to #13-04 (Mirror)



* The balcony shall not be enclosed unless with the approved balcony screen.
For an illustration of the approved balcony screen, please refer to Page 46 of this brochure.

** High ceiling/voids are not to be slabbed over without planning permission (where applicable).

All floor areas indicated are inclusive of AC Ledge, Balcony and Strata Void where applicable.
All floor areas are estimate only and subject to final survey.
All floor plans are subject to changes as may be required or approved by the relevant authorities.



* The balcony shall not be enclosed unless with the approved balcony screen.
For an illustration of the approved balcony screen, please refer to Page 46 of this brochure.

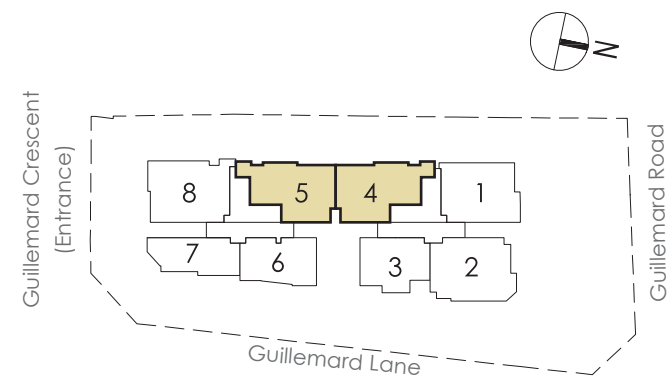
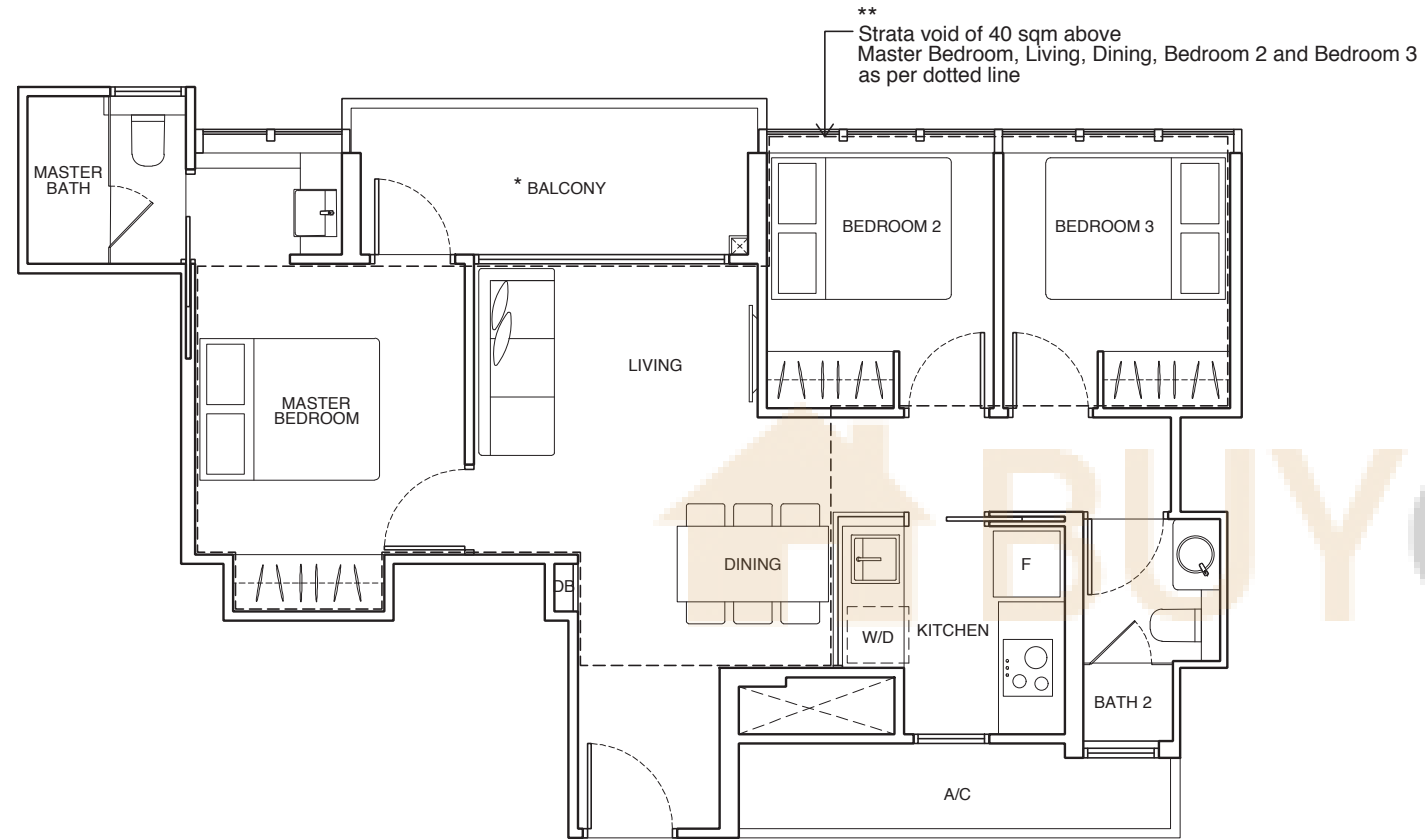
All floor areas indicated are inclusive of AC Ledge, Balcony and Strata Void where applicable.
All floor areas are estimate only and subject to final survey.
All floor plans are subject to changes as may be required or approved by the relevant authorities.

3 BEDROOM

TYPE C1-P

115 sqm
(inclusive of void of 40 sqm)

#14-05 **
#14-04 ** (Mirror)



* The balcony shall not be enclosed unless with the approved balcony screen.
For an illustration of the approved balcony screen, please refer to Page 46 of this brochure.

** High ceiling/voids are not to be slabbed over without planning permission (where applicable).

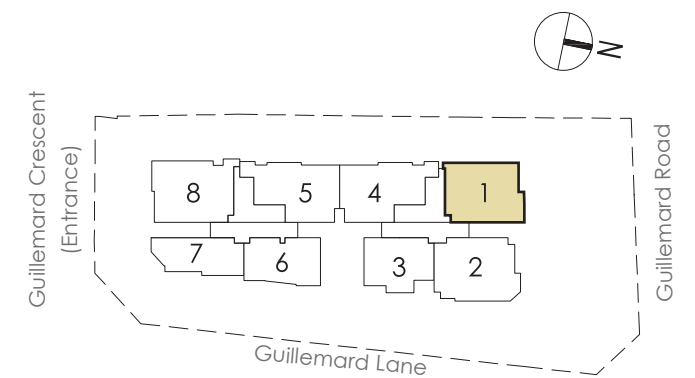
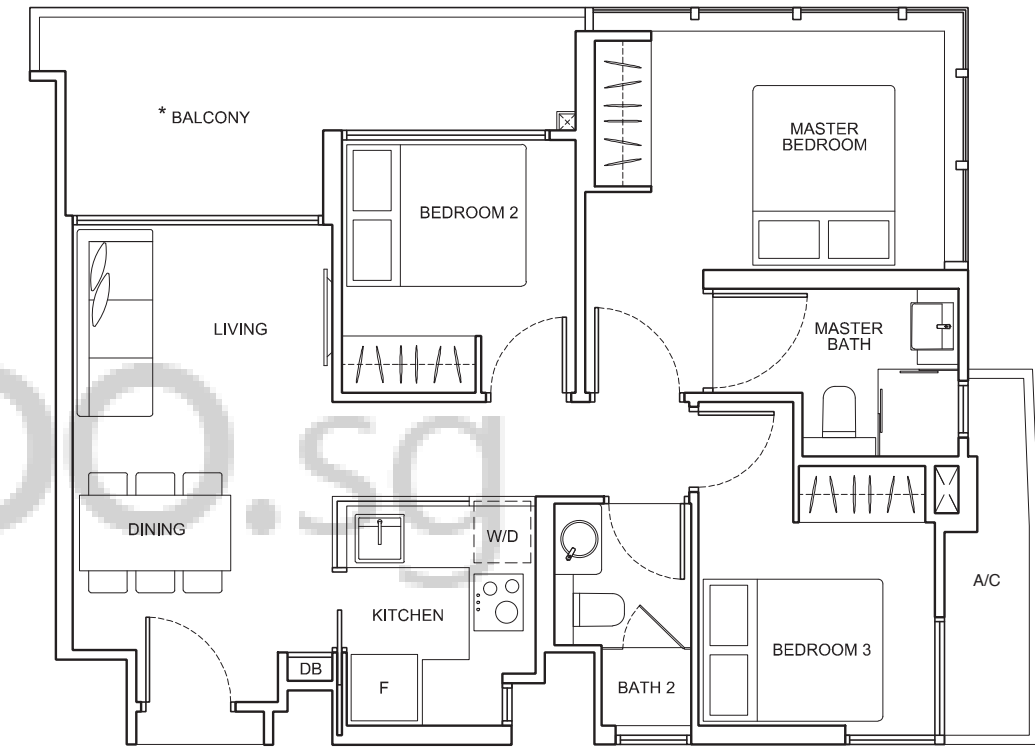
All floor areas indicated are inclusive of AC Ledge, Balcony and Strata Void where applicable.
All floor areas are estimate only and subject to final survey.
All floor plans are subject to changes as may be required or approved by the relevant authorities.

3 BEDROOM

TYPE C2

76 sqm

#03-01 to #13-01



* The balcony shall not be enclosed unless with the approved balcony screen.
For an illustration of the approved balcony screen, please refer to Page 46 of this brochure.

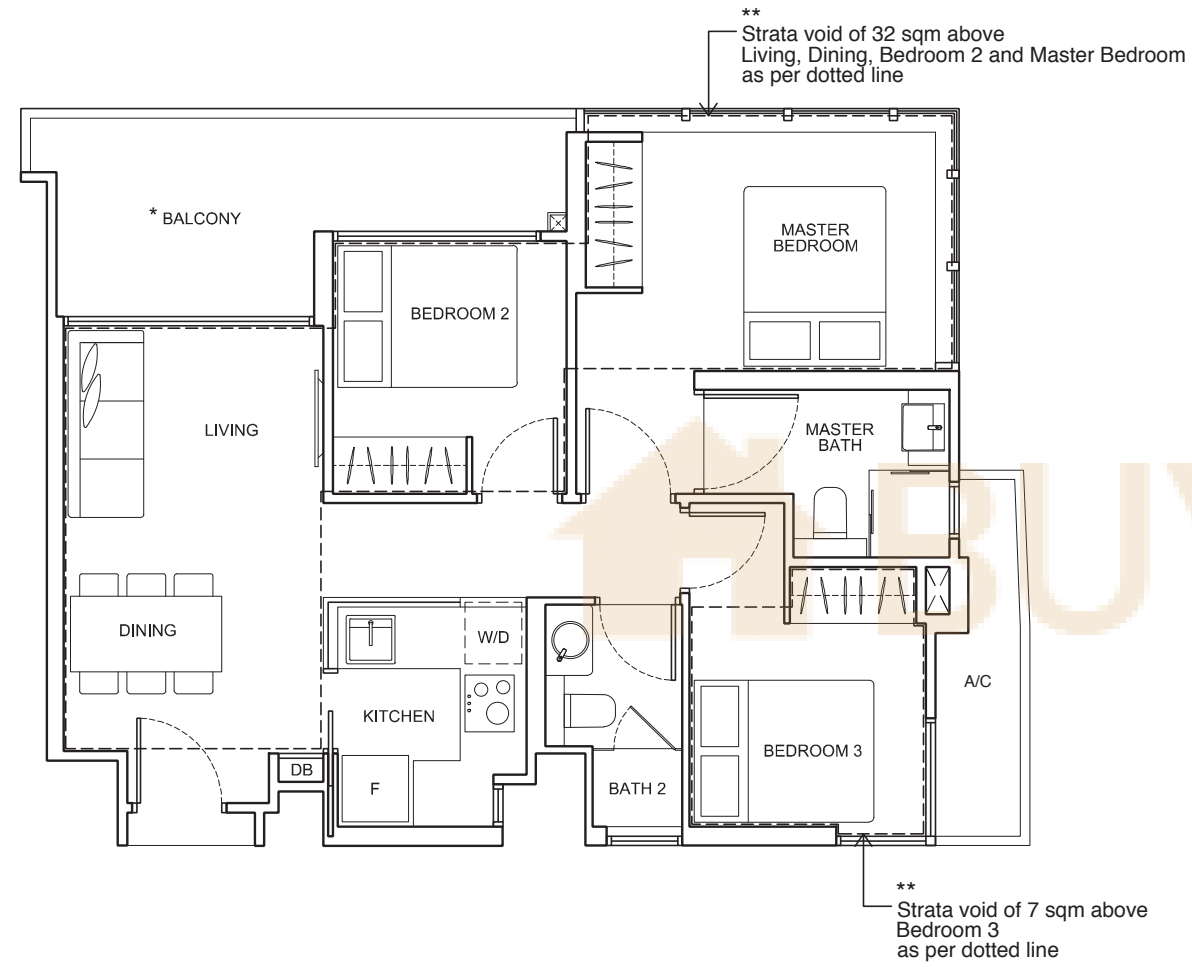
All floor areas indicated are inclusive of AC Ledge, Balcony and Strata Void where applicable.
All floor areas are estimate only and subject to final survey.
All floor plans are subject to changes as may be required or approved by the relevant authorities.

3 BEDROOM

TYPE C2-P

115 sqm
(inclusive of void of 39 sqm)

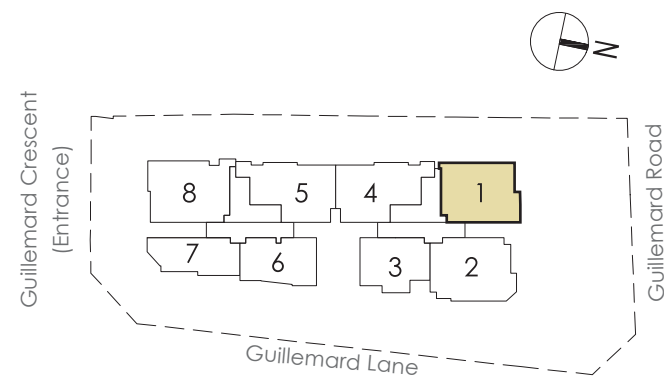
#14-01**



* The balcony shall not be enclosed unless with the approved balcony screen.
For an illustration of the approved balcony screen, please refer to Page 46 of this brochure.

** High ceiling/voids are not to be slabbed over without planning permission (where applicable).

All floor areas indicated are inclusive of AC Ledge, Balcony and Strata Void where applicable.
All floor areas are estimate only and subject to final survey.
All floor plans are subject to changes as may be required or approved by the relevant authorities.

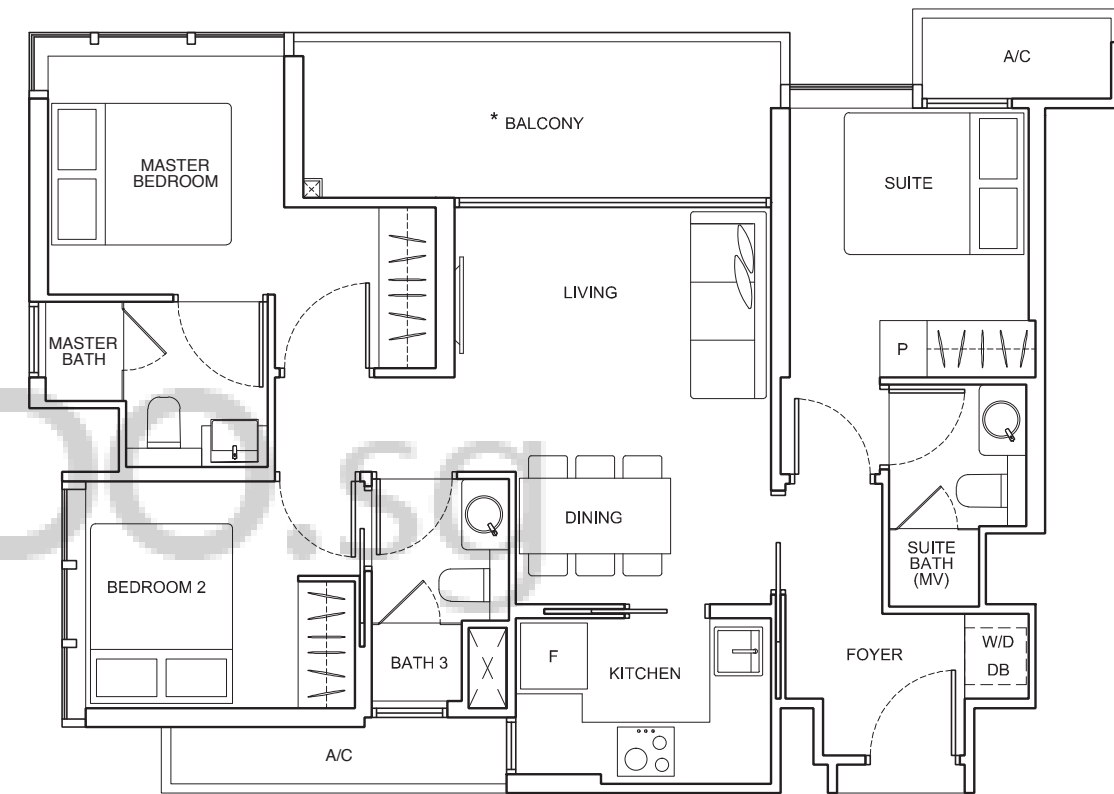


3 BEDROOM DUAL-KEY

TYPE C3-DK

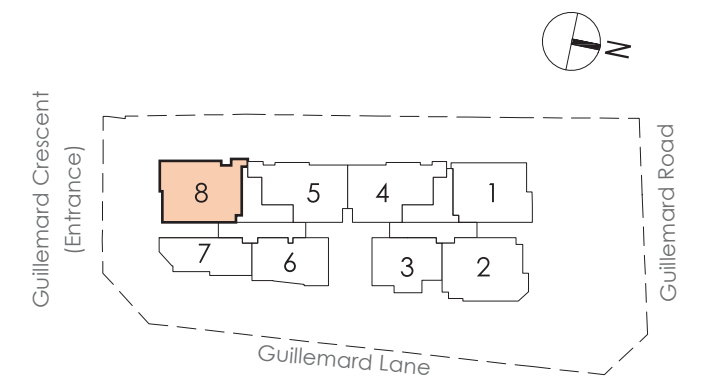
82 sqm

#03-08 to #13-08



* The balcony shall not be enclosed unless with the approved balcony screen.
For an illustration of the approved balcony screen, please refer to Page 46 of this brochure.

All floor areas indicated are inclusive of AC Ledge, Balcony and Strata Void where applicable.
All floor areas are estimate only and subject to final survey.
All floor plans are subject to changes as may be required or approved by the relevant authorities.

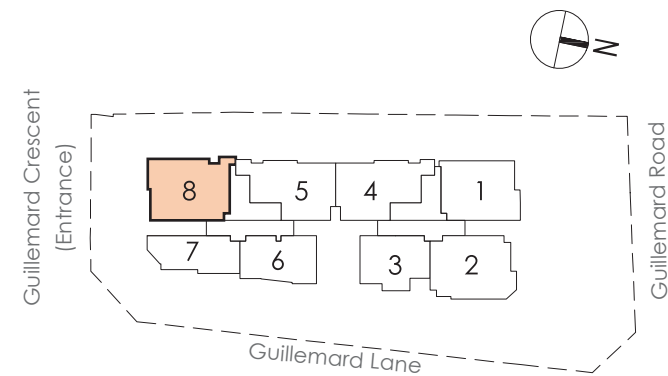
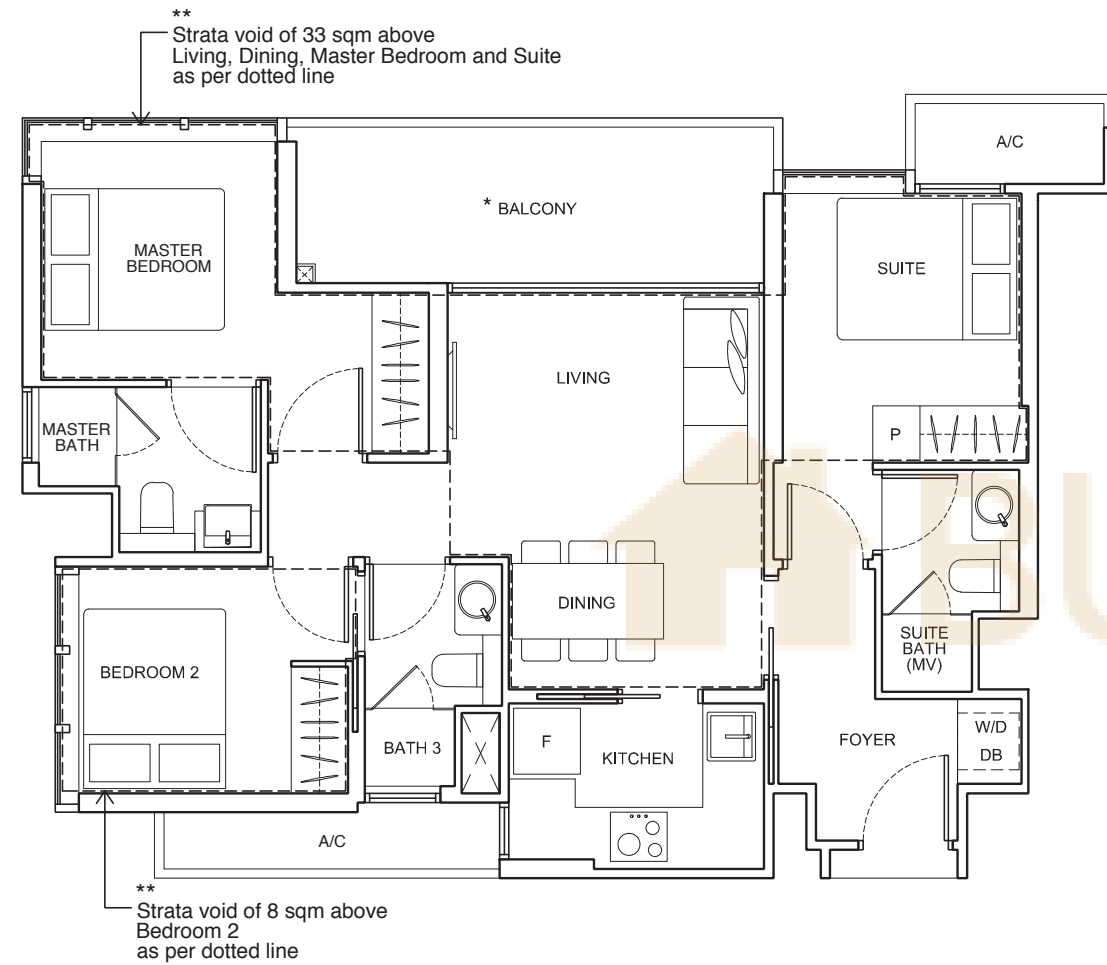


3 BEDROOM DUAL-KEY

TYPE C3-DK-P

123 sqm
(inclusive of void of 41 sqm)

#14-08**



* The balcony shall not be enclosed unless with the approved balcony screen. For an illustration of the approved balcony screen, please refer to Page 46 of this brochure.

** High ceiling/voids are not to be slabbed over without planning permission (where applicable).

All floor areas indicated are inclusive of AC Ledge, Balcony and Strata Void where applicable. All floor areas are estimate only and subject to final survey. All floor plans are subject to changes as may be required or approved by the relevant authorities.

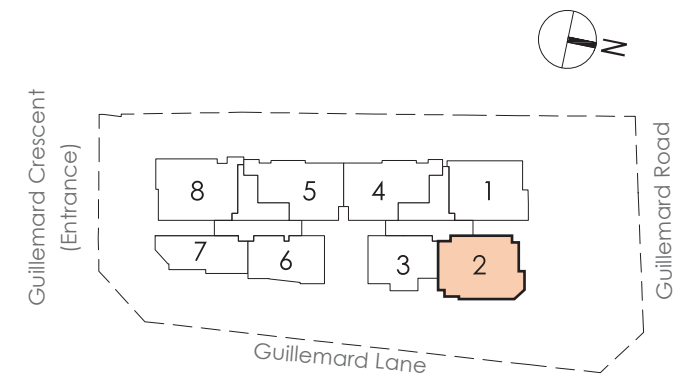
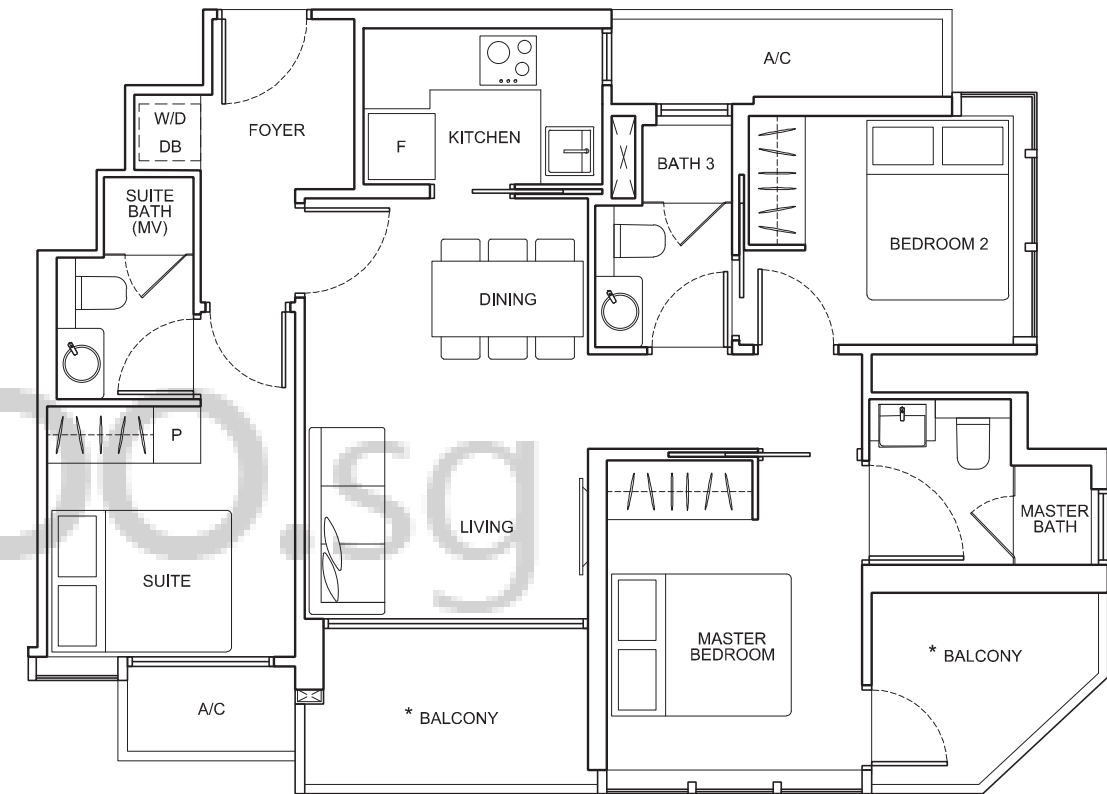
3 BEDROOM DUAL-KEY

TYPE C4-DK

83 sqm

#02-02**

#03-02 to #14-02



* The balcony shall not be enclosed. Only approved balcony screens are to be used. For an illustration of the approved balcony screen, please refer to Page 46 of this brochure.

** High ceiling/voids are not to be slabbed over without planning permission (where applicable).

All floor areas indicated are inclusive of AC Ledge, Balcony and Strata Void where applicable. All floor areas are estimate only and subject to final survey. All floor plans are subject to changes as may be required or approved by the relevant authorities.