

2-BEDROOM

NORTH FACING (TANGLIN / ORCHARD)

TYPE B1

89 sqm (958 sq ft)

#04-04 – #06-04

#08-04 – #11-04

#04-09 – #06-09*

#18-09 – #21-09*

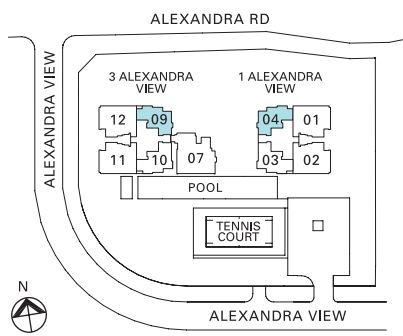
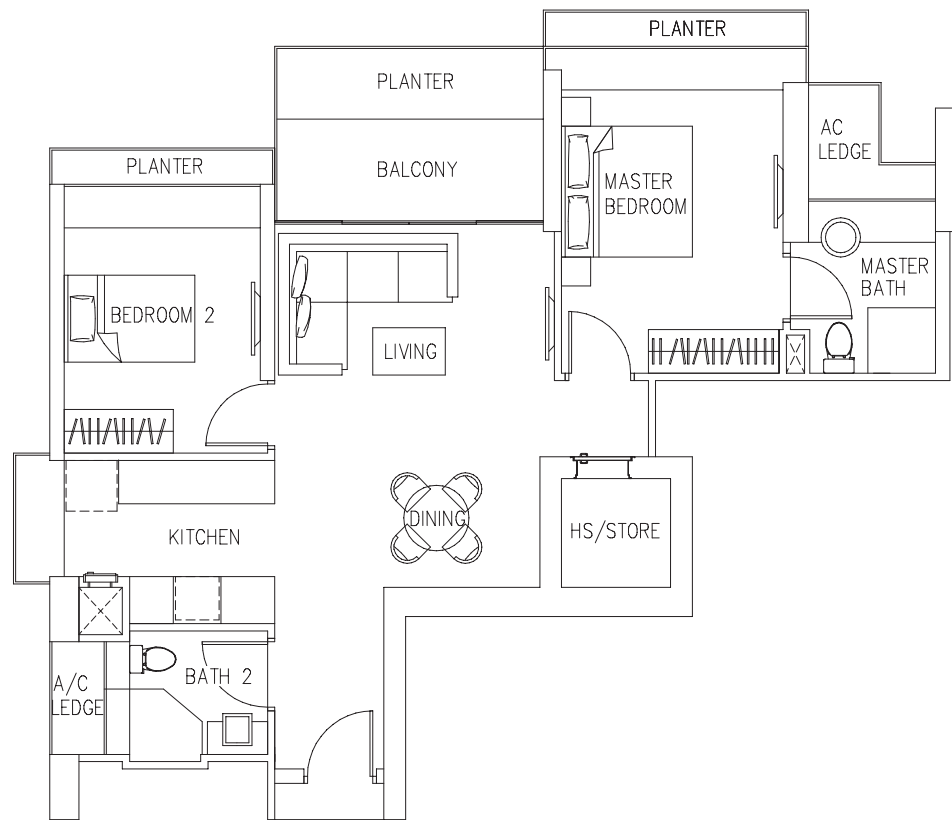
TYPE B1-4

89 sqm (958 sq ft)

#27-04 – #30-04

#37-09 – #40-09*

*(Mirror Image)



TYPE B1-1

88 sqm (947 sq ft)

#03-04

#12-04 – #21-04

#07-09 – #16-09*

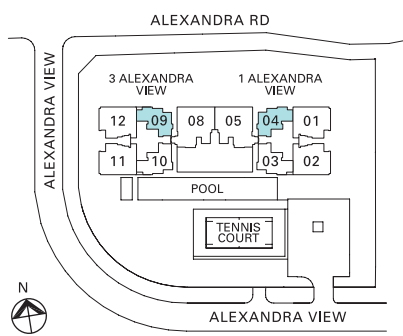
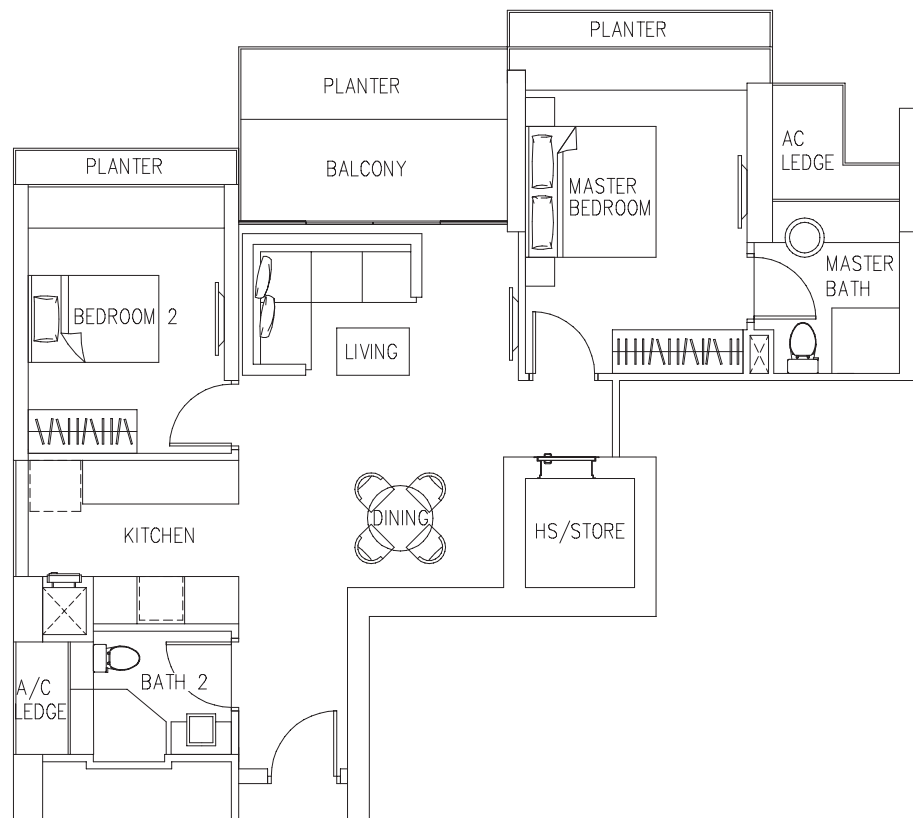
TYPE B1-5

88 sqm (947 sq ft)

#31-04 – #40-04

#26-09 – #35-09*

*(Mirror Image)



2-BEDROOM

NORTH FACING (TANGLIN / ORCHARD)

TYPE B1-2

89 sqm (958 sq ft)

#03-09

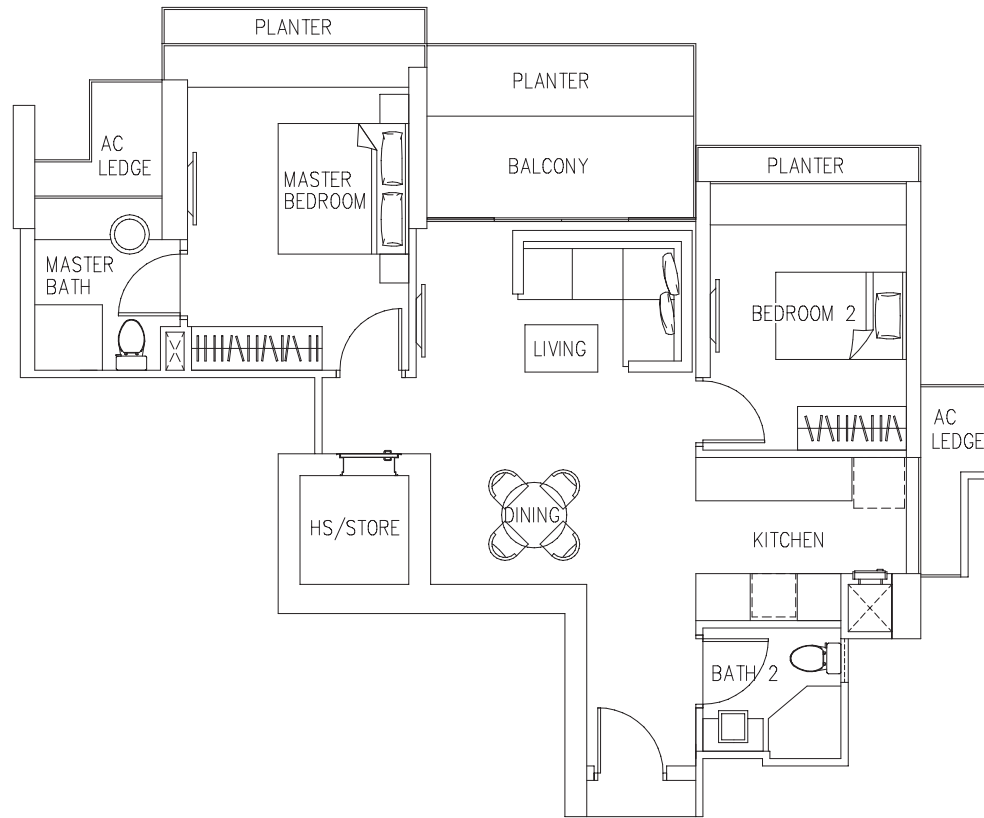
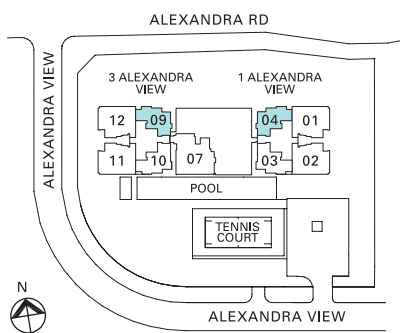
TYPE B1-6

89 sqm (958 sq ft)

#26-04*

#36-09

*(Mirror Image)



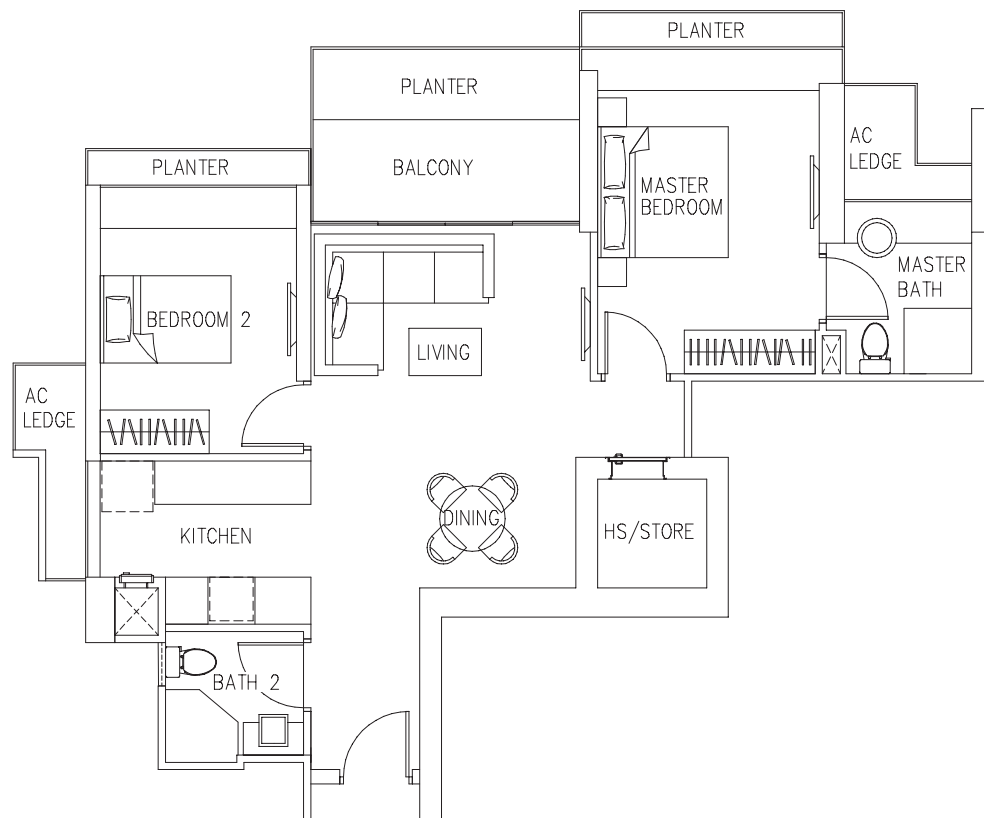
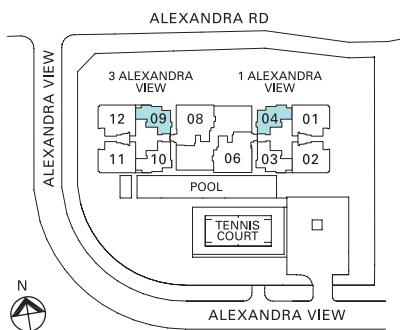
TYPE B1-3

89 sqm (958 sq ft)

#07-04

#17-09*

*(Mirror Image)



3-BEDROOM

NORTH FACING (TANGLIN / ORCHARD)

TYPE C1

137 sqm (1,475 sq ft)

#03-01 – #21-01*

#03-12 – #21-12

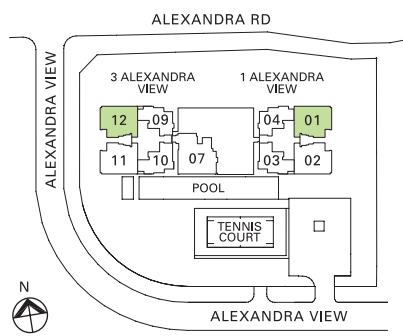
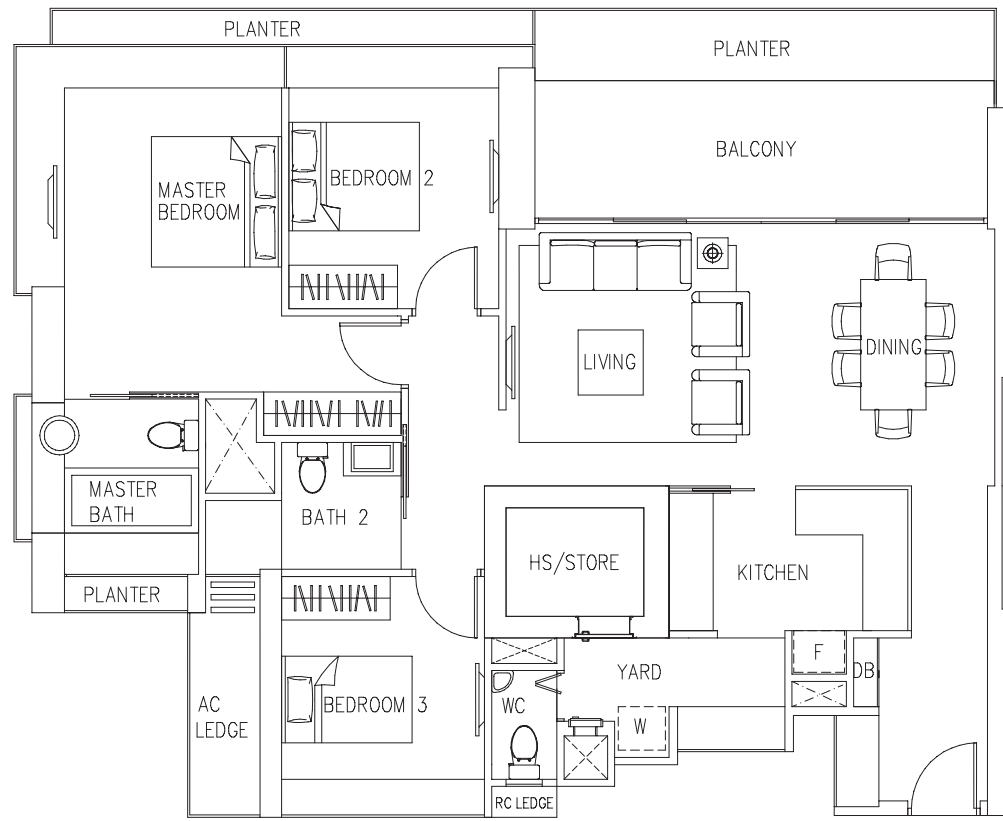
TYPE C1-2

137 sqm (1,475 sq ft)

#26-01 – #40-01*

#26-12 – #40-12

*(Mirror Image)



4-BEDROOM

NORTH FACING (TANGLIN / ORCHARD)

TYPE D1

172 sqm (1,851 sq ft)

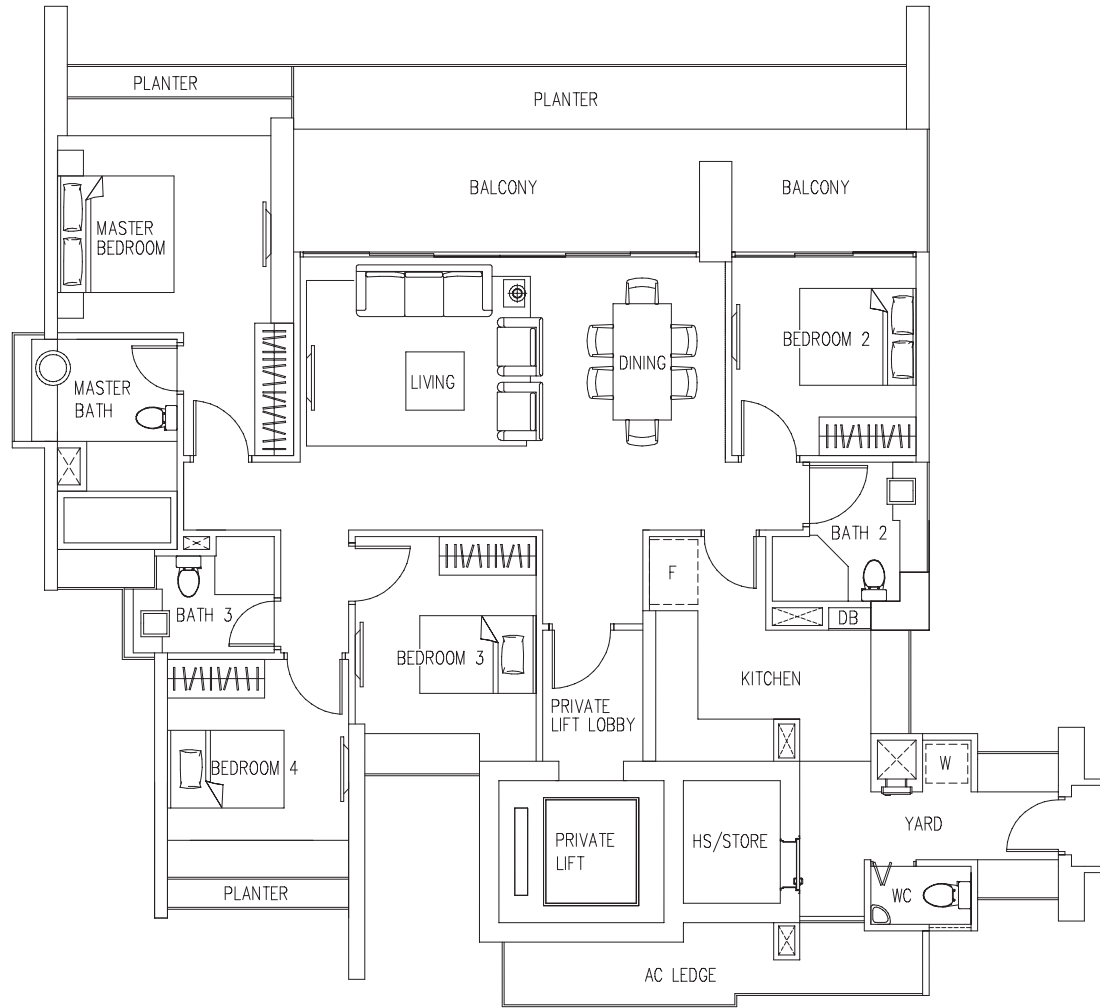
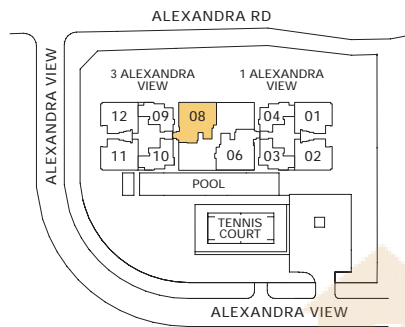
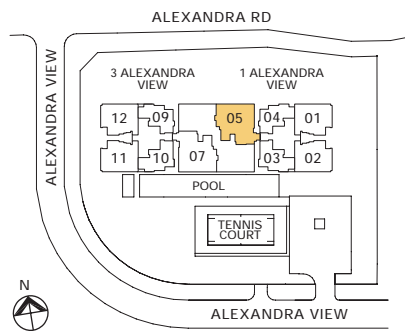
#18-05 - #21-05

#37-05 - #40-05

#08-08 - #11-08*

#27-08 - #30-08*

*(Mirror Image)



BUYCONDO.sg

TYPE D1-2

166 sqm (1,787 sq ft)

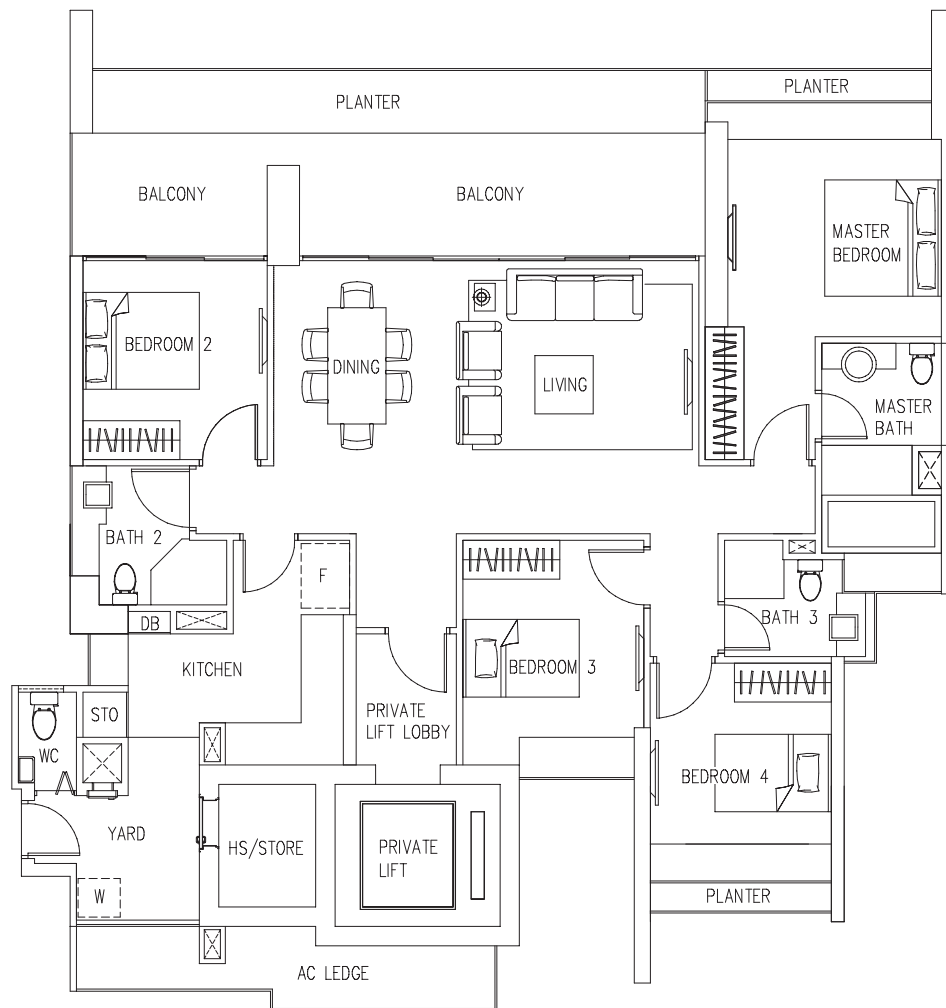
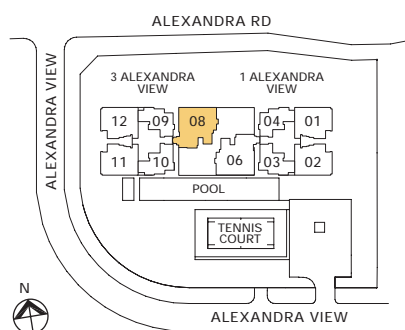
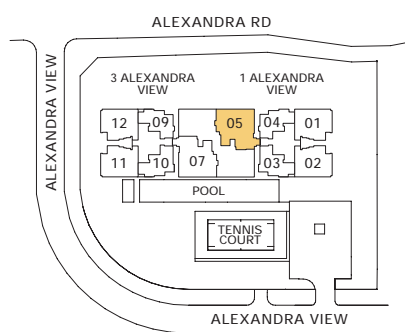
#17-05*

#36-05*

#07-08

#26-08

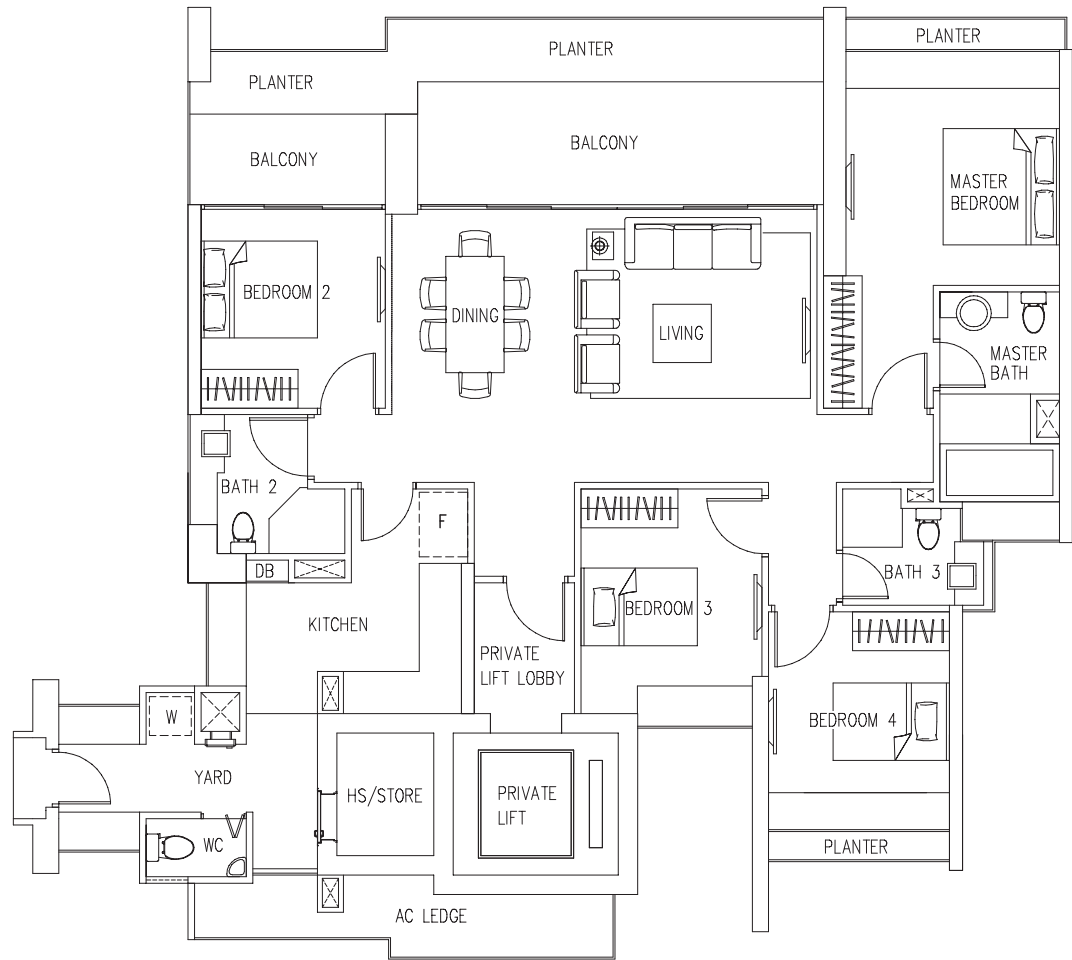
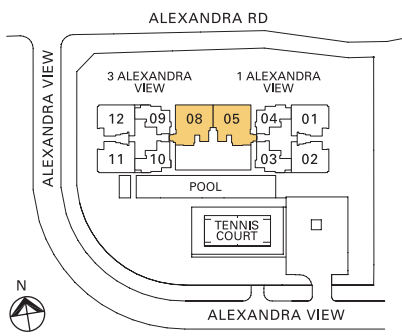
*(Mirror Image)



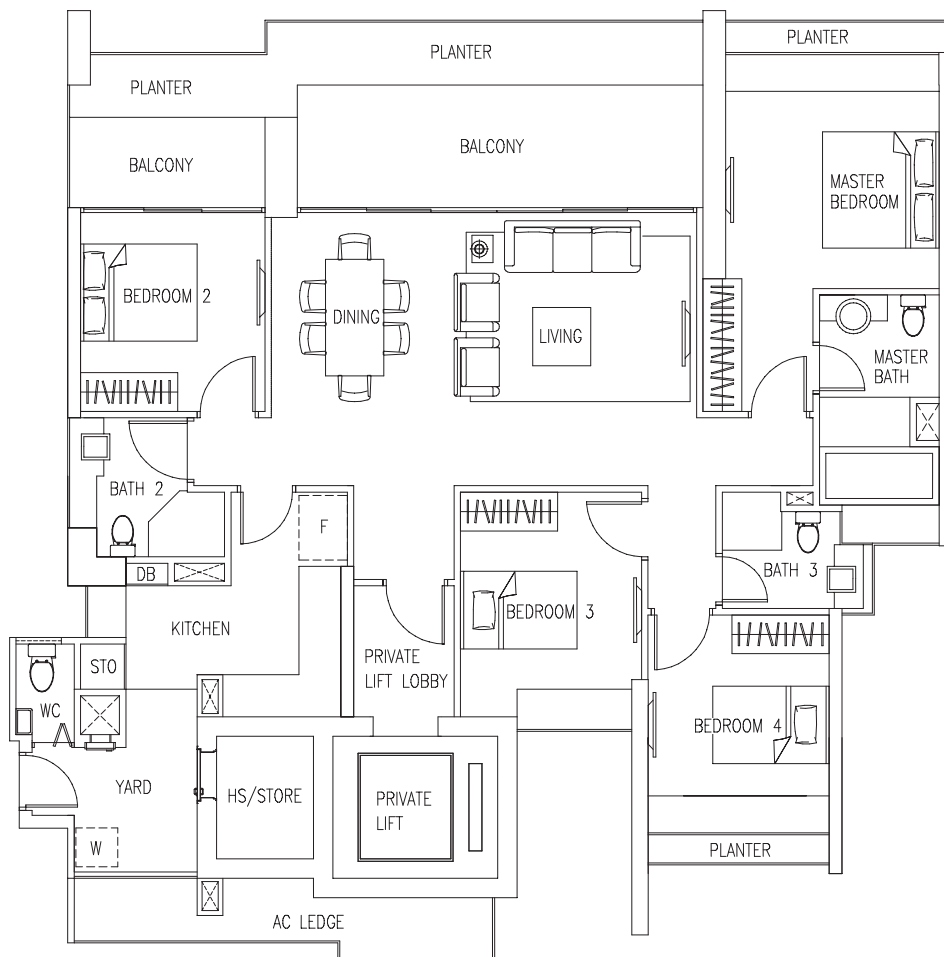
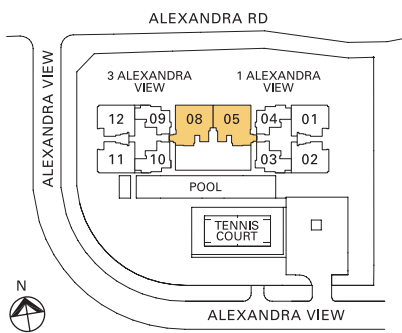
4-BEDROOM

NORTH FACING (TANGLIN / ORCHARD)

TYPE D1-4
 169 sqm (1,819 sq ft)
 #13-05 – #16-05*
 #32-05 – #35-05*
 #13-08 – #16-08
 #32-08 – #35-08
 *(Mirror Image)



TYPE D1-5
 165 sqm (1,776 sq ft)
 #12-05*
 #31-05*
 #12-08
 #31-08
 *(Mirror Image)



4-BEDROOM

NORTH FACING (TANGLIN / ORCHARD)

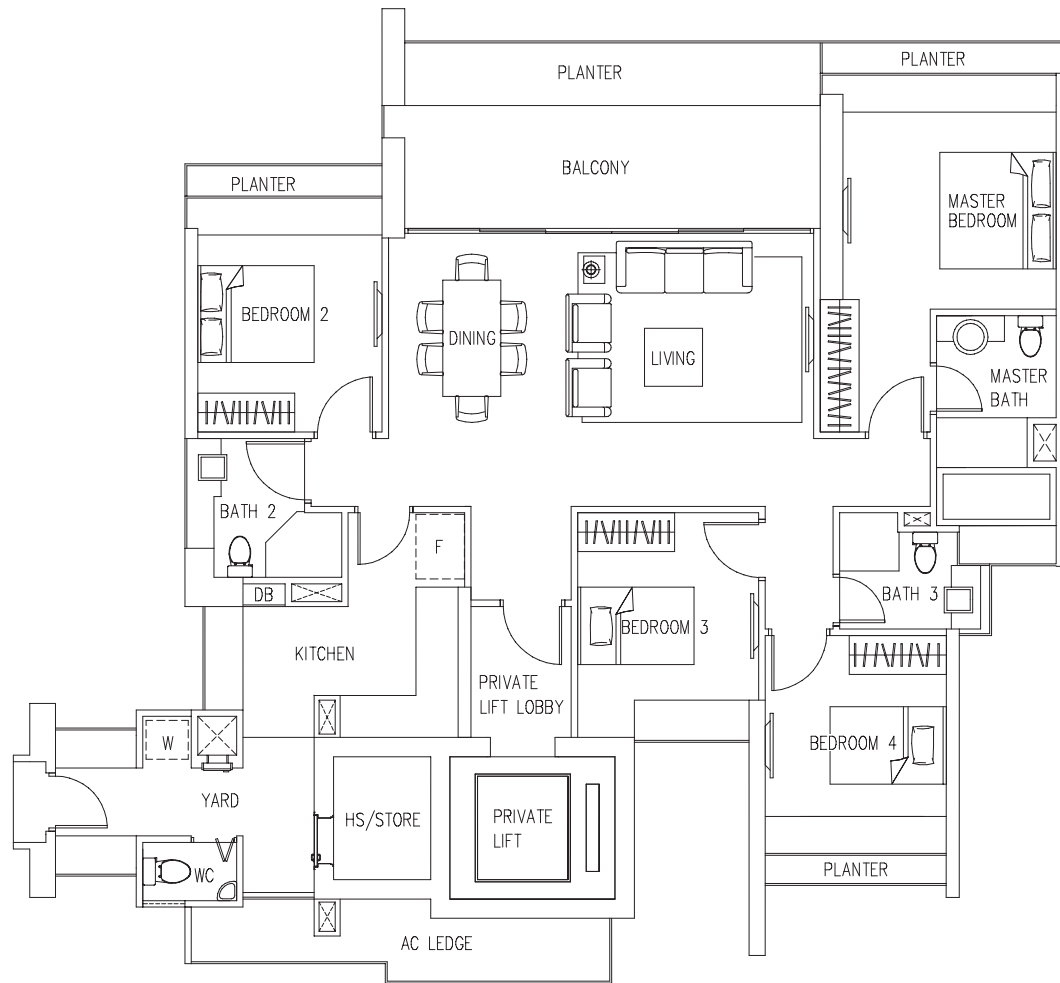
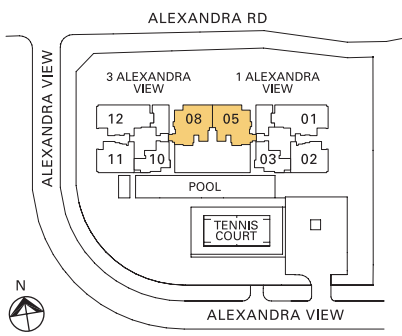
TYPE D1-6

165 sqm (1,776 sq ft)

#42-05 – #44-05*

#42-08 – #44-08

*(Mirror Image)



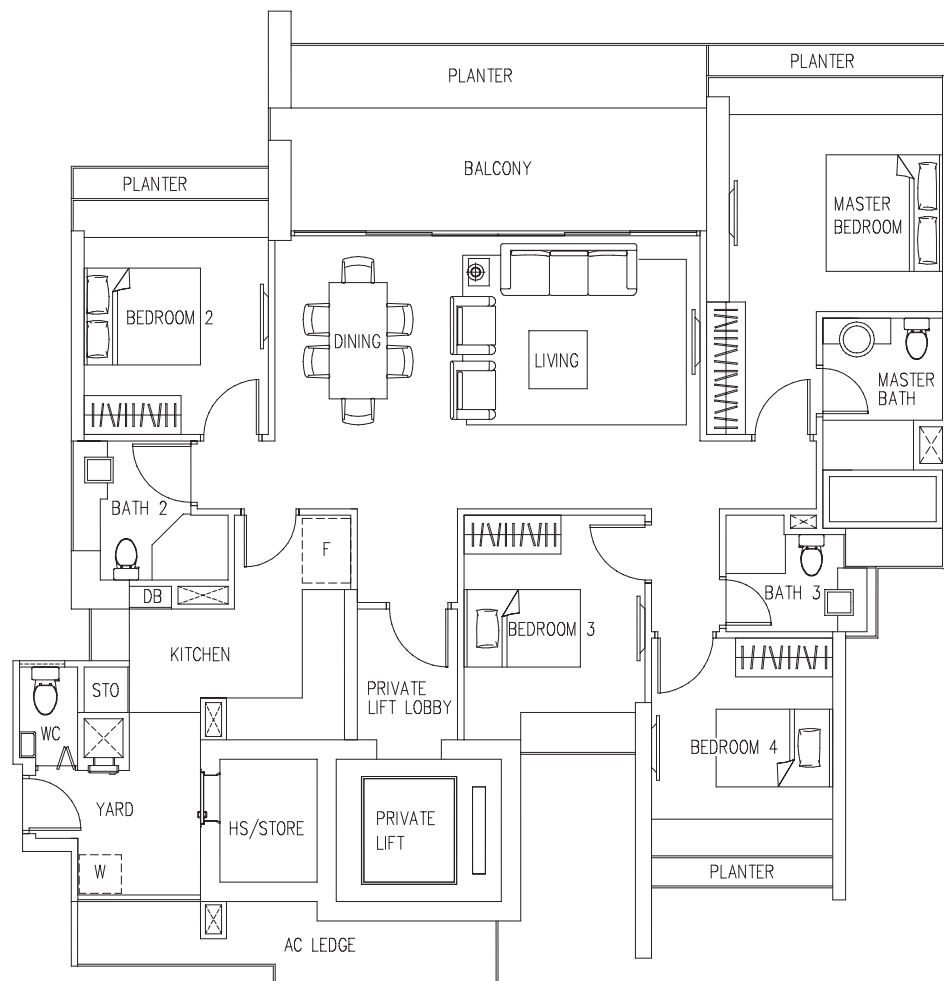
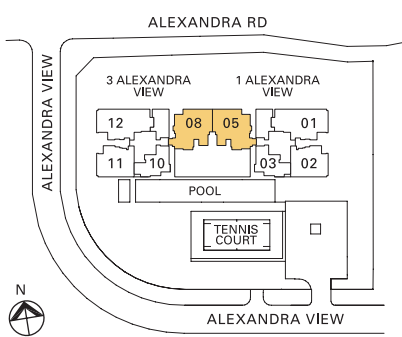
TYPE D1-7

161 sqm (1,733 sq ft)

#41-05*

#41-08

*(Mirror Image)



The above plans are not to scale and subject to any amendments as may be approved by the relevant authorities. All apartment areas are approximate of typical plans and are subject to final survey and column sizes may vary. The developer and its agents cannot be held liable for any inaccuracies. All external elevations/facades of the apartment including but not limited to solid walls, sliding or swing glass doors, windows and/or bay windows with fixed glass panels, sliding or casement glass panels, and/or any other features relevant to the facades are positioned, installed and/or subject to random/rhythmic combination of architectural treatments. As such, the external elevations/facades/features/installations are modular and all apartments vary in some way or another.

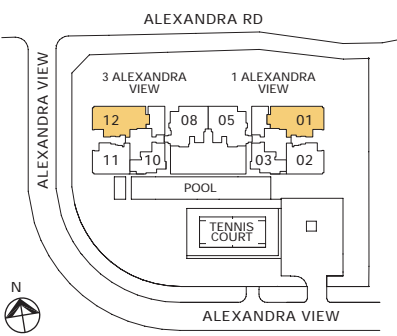
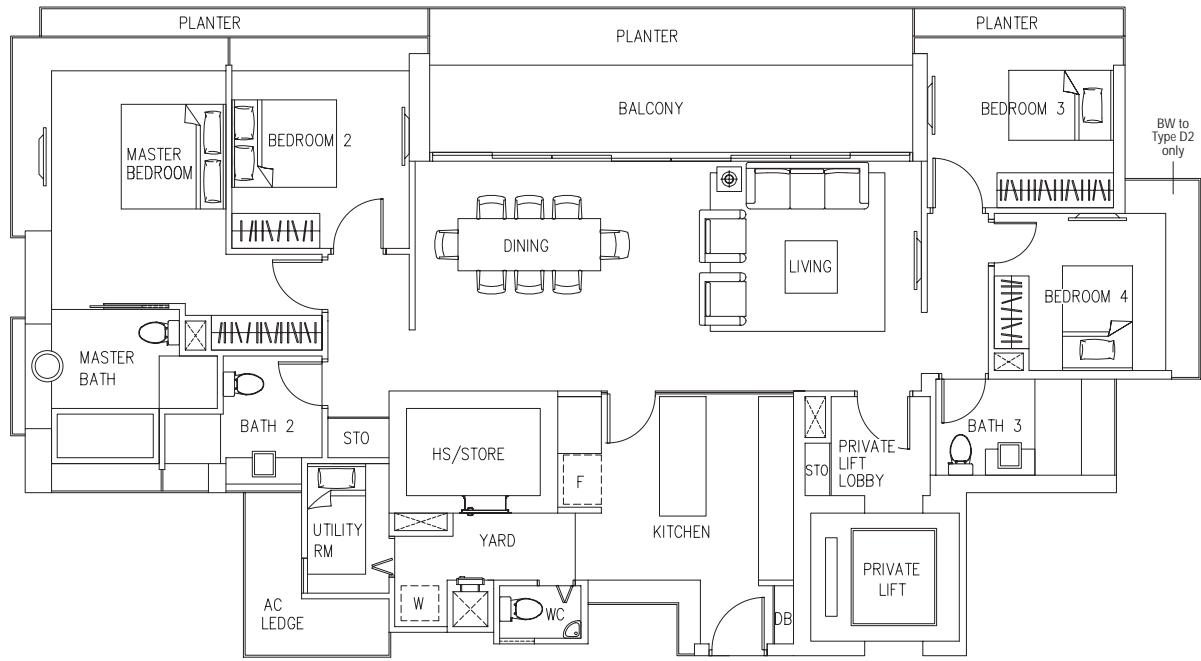
4-BEDROOM

NORTH FACING (TANGLIN / ORCHARD)

TYPE D2
 185 sqm (1,991 sq ft)
 #42-01 - #44-01*
 #42-12 - #44-12

TYPE D2-1
 183 sqm (1,970 sq ft)
 #41-01*
 #41-12

*(Mirror Image)



5 BEDROOM

NORTH FACING (TANGLIN / ORCHARD)

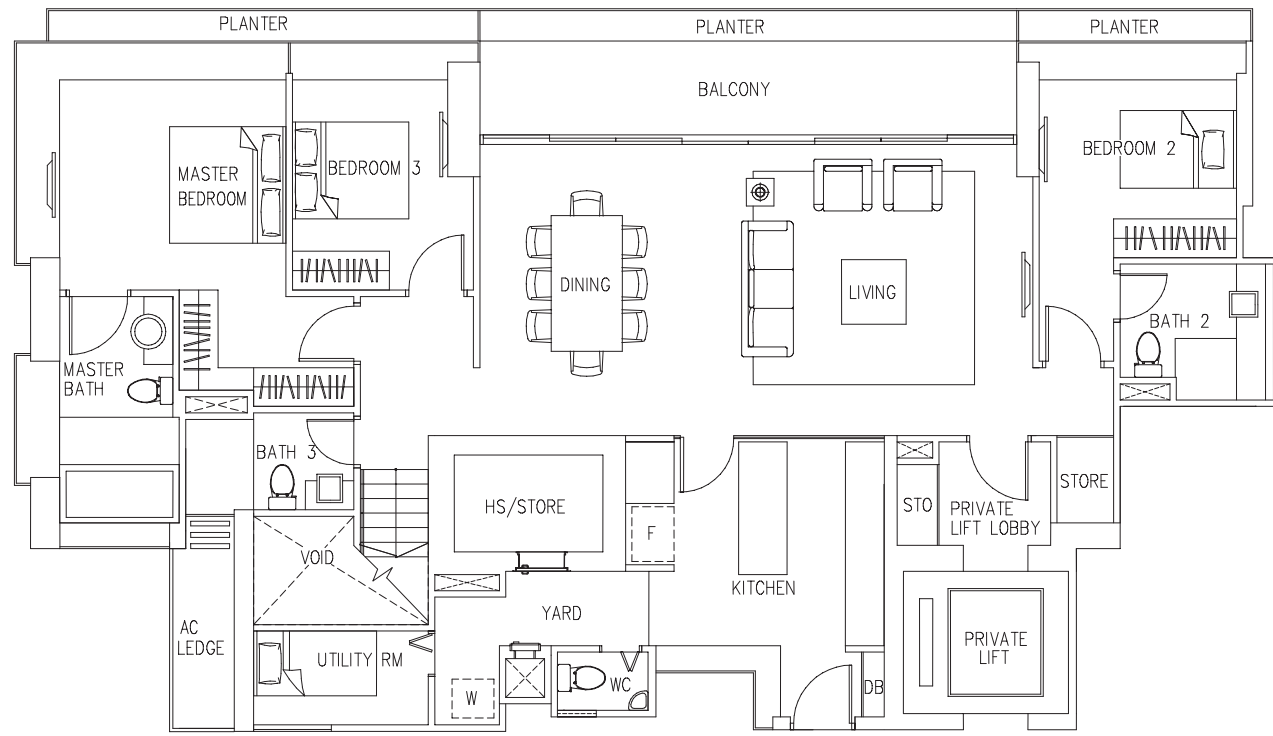
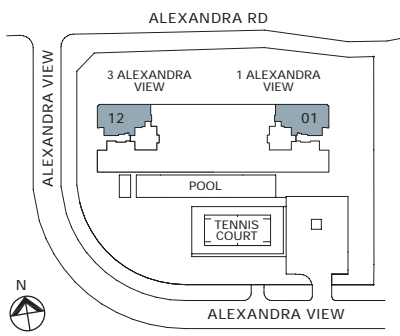
TYPE Dp-1

281 sqm (3,025 sq ft)

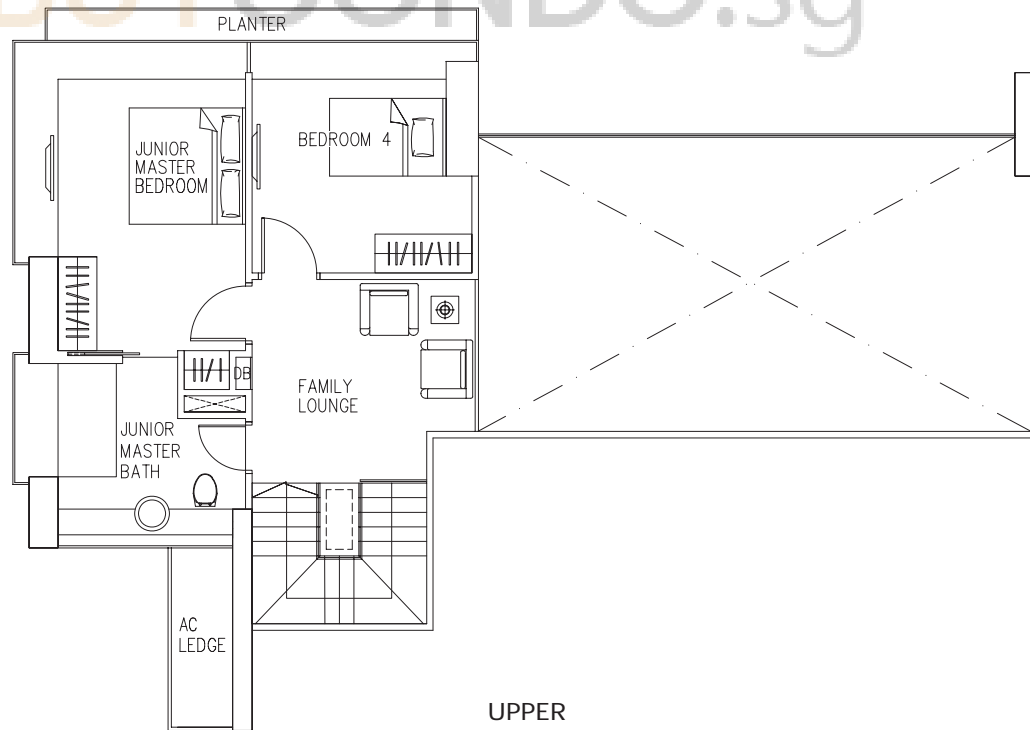
#22-01*

#22-12

*(Mirror Image)



LOWER



UPPER

Units Distribution

Unit No.	11	10	07	06	03	02
45	P2 #45-12		Cloud9 Banquet Penthouse Suite		P1 #45-01	
44	C1-4 #44-11	B2-9 #44-10			B2-9 #44-03	C1-4 #44-02
43	C1-4 #43-11	B2-9 #43-10			B2-9 #43-03	C1-4 #43-02
42	C1-4 #42-11	B2-9 #42-10			B2-9 #42-03	C1-4 #42-02
41	C1-4 #41-11	B2-8 #41-10			B2-8 #41-03	C1-4 #41-02
40	C1-3 #40-11	B2-5 #40-10	D1-1 #40-07		B2-4 #40-03	C1-3 #40-02
39	C1-3 #39-11	B2-5 #39-10	D1-1 #39-07		B2-4 #39-03	C1-3 #39-02
38	C1-3 #38-11	B2-5 #38-10	D1-1 #38-07		B2-4 #38-03	C1-3 #38-02
37	C1-3 #37-11	B2-5 #37-10	D1-1 #37-07		B2-4 #37-03	C1-3 #37-02
36	C1-3 #36-11	B2-5 #36-10	D1-3 #36-07	Starlight Reflection & Relaxation Lofts	B2-6 #36-03	C1-3 #36-02
35	C1-3 #35-11	B2-4 #35-10			B2-4 #35-03	C1-3 #35-02
34	C1-3 #34-11	B2-4 #34-10			B2-4 #34-03	C1-3 #34-02
33	C1-3 #33-11	B2-4 #33-10			B2-4 #33-03	C1-3 #33-02
32	C1-3 #32-11	B2-4 #32-10			B2-4 #32-03	C1-3 #32-02
31	C1-3 #31-11	B2-7 #31-10		Vanda Tea Garden	B2-7 #31-03	C1-3 #31-02
30	C1-3 #30-11	B2-4 #30-10			B2-5 #30-03	C1-3 #30-02
29	C1-3 #29-11	B2-4 #29-10		D1-1 #30-06	B2-5 #29-03	C1-3 #29-02
28	C1-3 #28-11	B2-4 #28-10		D1-1 #29-06	B2-5 #28-03	C1-3 #28-02
27	C1-3 #27-11	B2-4 #27-10		D1-1 #28-06	B2-5 #27-03	C1-3 #27-02
26	C1-3 #26-11	B2-6 #26-10		D1-1 #27-06	B2-5 #26-03	C1-3 #26-02
25				i-Quiz & i-Quest Lofts	D1-3 #26-06	
24						
23						
22				Supernova Fitness Suite		
21	C1-1 #21-11	B2-1 #21-10	D1-1 #21-07		B2 #21-03	C1-1 #21-02
20	C1-1 #20-11	B2-1 #20-10	D1-1 #20-07		B2 #20-03	C1-1 #20-02
19	C1-1 #19-11	B2-1 #19-10	D1-1 #19-07		B2 #19-03	C1-1 #19-02
18	C1-1 #18-11	B2-1 #18-10	D1-1 #18-07		B2 #18-03	C1-1 #18-02
17	C1-1 #17-11	B2-1 #17-10	D1-3 #17-07	Astro Interactive & Leisure Lofts	B2-2 #17-03	C1-1 #17-02
16	C1-1 #16-11	B2 #16-10			B2 #16-03	C1-1 #16-02
15	C1-1 #15-11	B2 #15-10			B2 #15-03	C1-1 #15-02
14	C1-1 #14-11	B2 #14-10			B2 #14-03	C1-1 #14-02
13	C1-1 #13-11	B2 #13-10			B2 #13-03	C1-1 #13-02
12	C1-1 #12-11	B2-3 #12-10		Rainbow Play Zone	B2-3 #12-03	C1-1 #12-02
11	C1-1 #11-11	B2 #11-10			B2-1 #11-03	C1-1 #11-02
10	C1-1 #10-11	B2 #10-10			B2-1 #10-03	C1-1 #10-02
09	C1-1 #09-11	B2 #09-10			B2-1 #09-03	C1-1 #09-02
08	C1-1 #08-11	B2 #08-10			B2-1 #08-03	C1-1 #08-02
07	C1-1 #07-11	B2-2 #07-10		Cosmos Snooker & Games Lofts	B2-1 #07-03	C1-1 #07-02
06	C1-1 #06-11	B2-1 #06-10	D1-1 #06-07		B2 #06-03	C1-1 #06-02
05	C1-1 #05-11	B2-1 #05-10	D1-1 #05-07		B2 #05-03	C1-1 #05-02
04	C1-1 #04-11	B2-1 #04-10	D1-1 #04-07		B2 #04-03	C1-1 #04-02
03	C1-1 #03-11	B2-1 #03-10	D1-3 #03-07	Stardust Gourmet Club	B2-1 #03-03	C1-1 #03-02
02						
01	Pavilion Promenade & Rejuvenate E-deck					
B1	Basement Carpark					
B2	Basement Carpark					



2-BEDROOM SOUTH FACING (SENTOSA)

TYPE B2

94 sqm (1,012 sq ft)

#04-03 – #06-03

#13-03 – #16-03

#18-03 – #21-03

#08-10 – #11-10*

#13-10 – #16-10*

TYPE B2-4

94 sqm (1,012 sq ft)

#32-03 – #35-03

#37-03 – #40-03

#27-10 – #30-10*

#32-10 – #35-10*

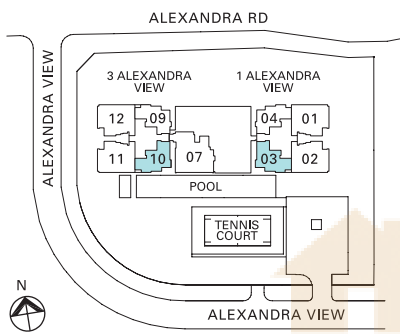
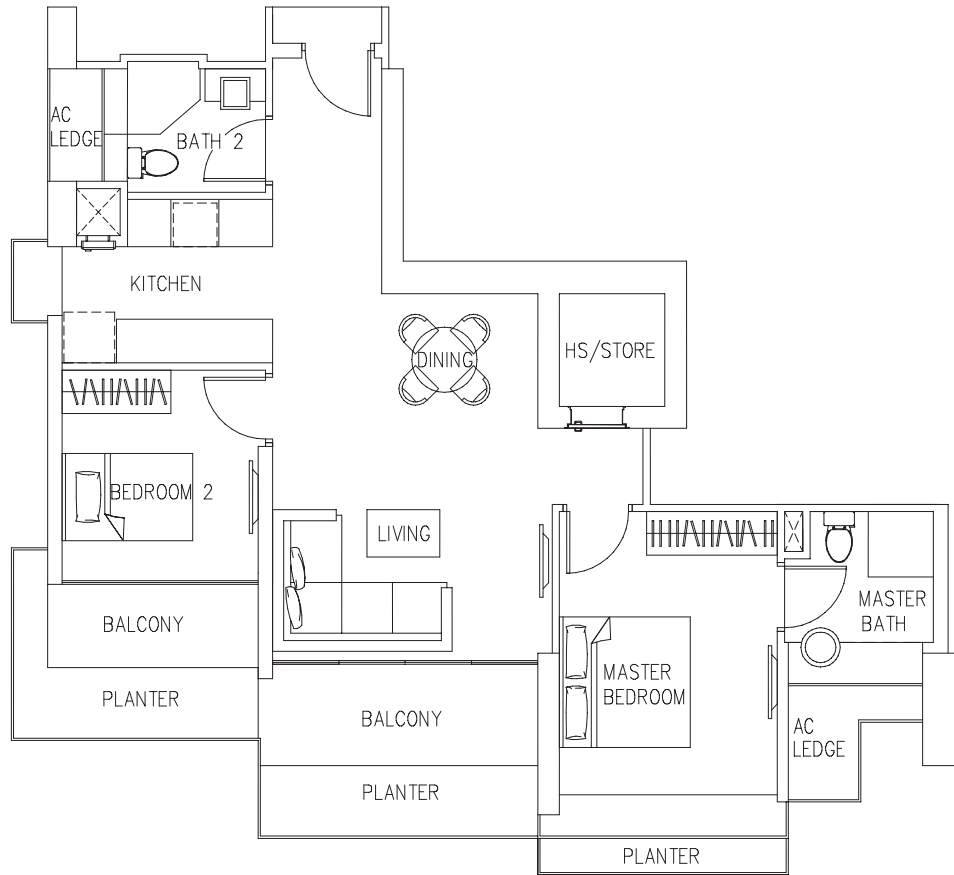
TYPE B2-9

95 sqm (1,023 sq ft)

#42-03 – #44-03

#42-10 – #44-10*

*(Mirror Image)



BUYCONDO.sg

TYPE B2-1

94 sqm (1,012 sq ft)

#03-03*

#07-03 – #11-03*

#03-10 – #06-10

#17-10 – #21-10

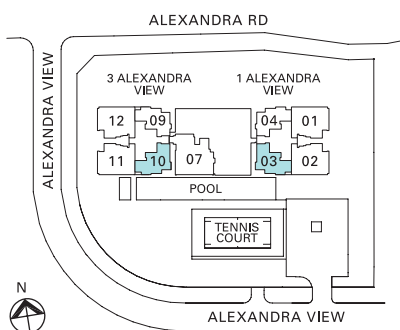
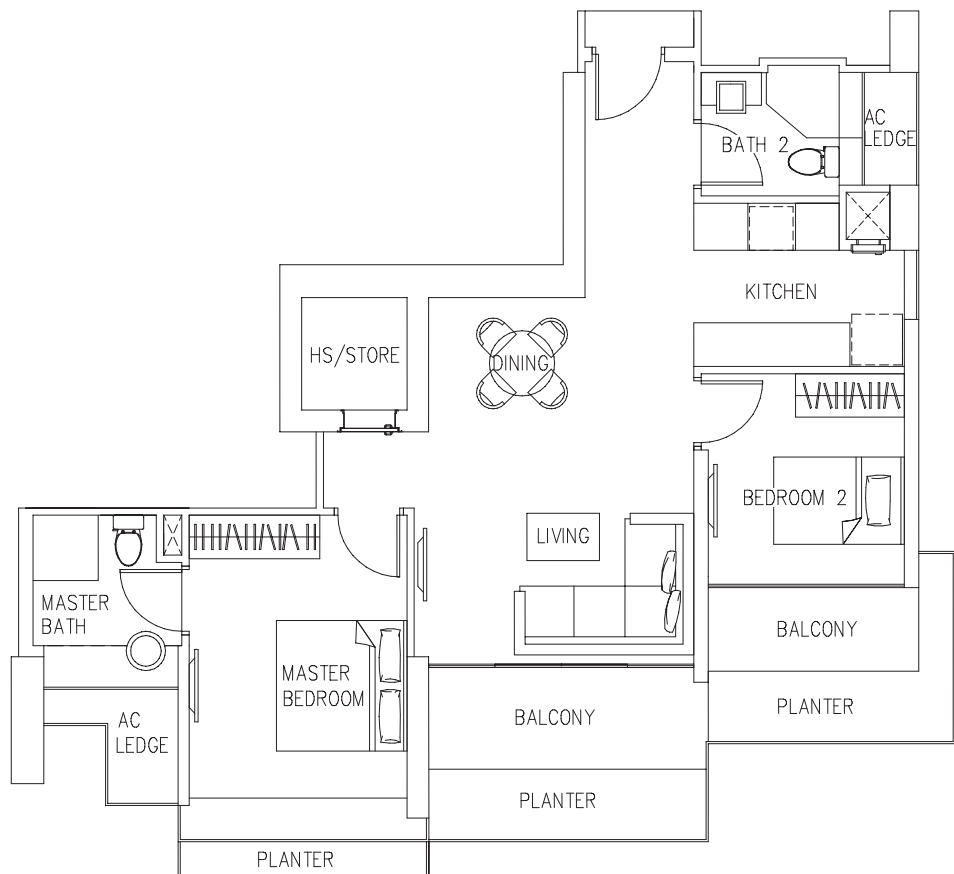
TYPE B2-5

94 sqm (1,012 sq ft)

#26-03 – #30-03*

#36-10 – #40-10

*(Mirror Image)



2-BEDROOM SOUTH FACING (SENTOSA)

TYPE B2-2

94 sqm (1,012 sq ft)

#17-03*

#07-10

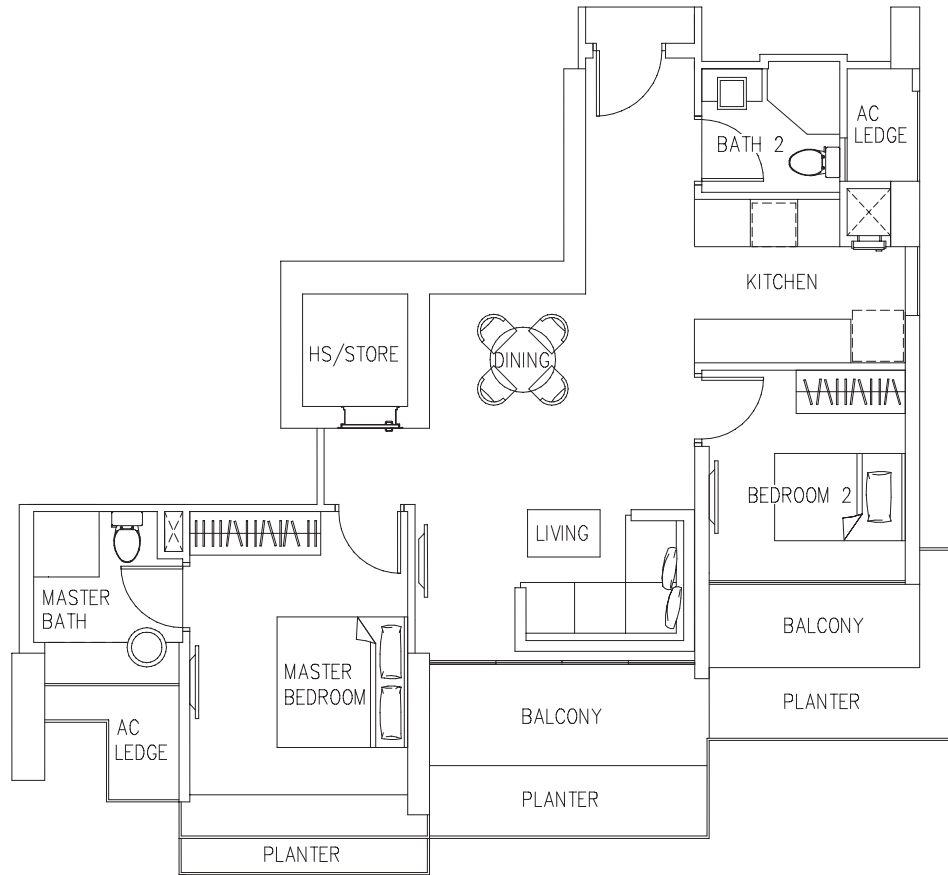
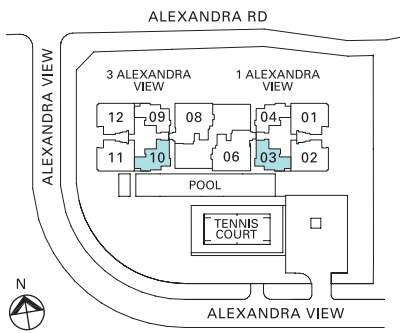
TYPE B2-6

94 sqm (1,012 sq ft)

#36-03*

#26-10

*(Mirror Image)



TYPE B2-3

93 sqm (1,001 sq ft)

#12-03

#12-10*

TYPE B2-7

93 sqm (1,001 sq ft)

#31-03

#31-10*

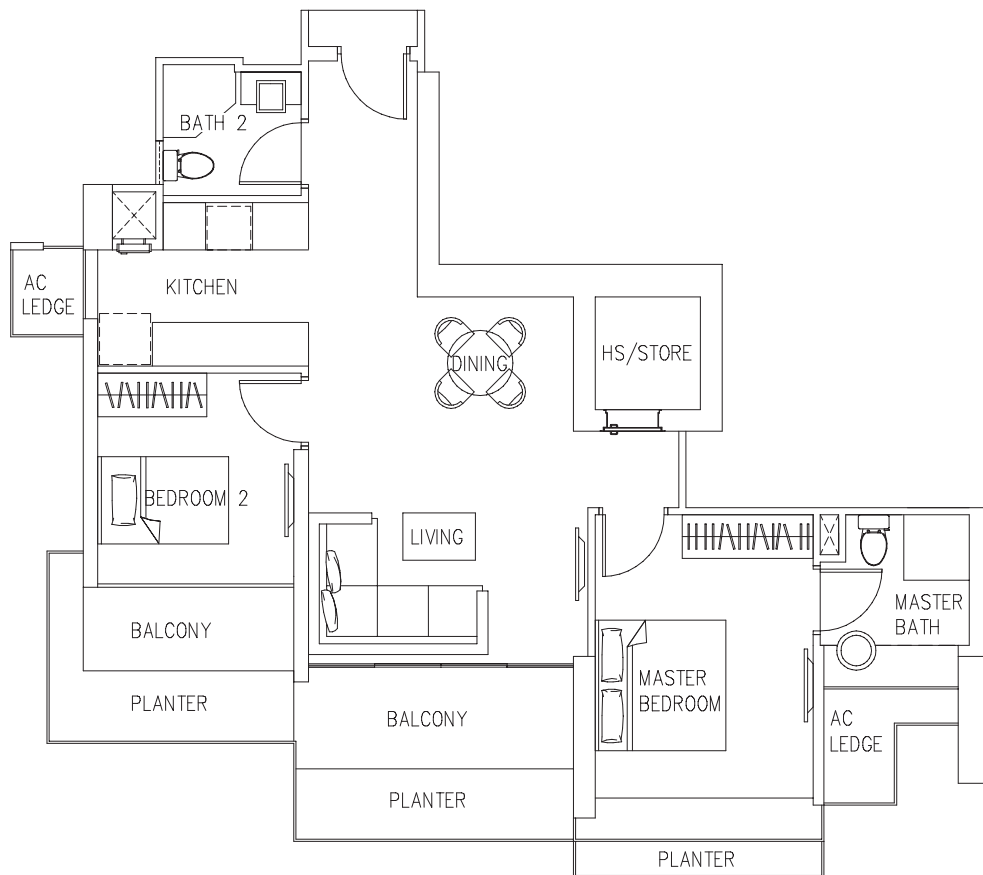
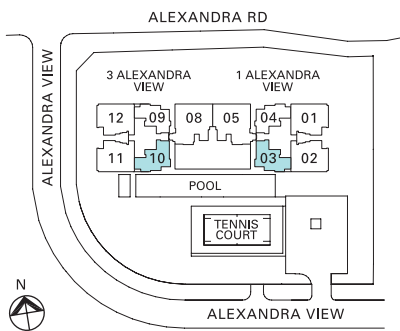
TYPE B2-8

93 sqm (1,001 sq ft)

#41-03

#41-10*

*(Mirror Image)



3-BEDROOM

SOUTH FACING (SENTOSA)

TYPE C1-1

137 sqm (1,475 sq ft)

#03-02 – #21-02*

#03-11 – #21-11

TYPE C1-3

137 sqm (1,475 sq ft)

#26-02 – #40-02*

#26-11 – #40-11

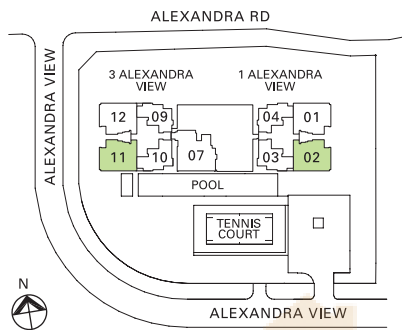
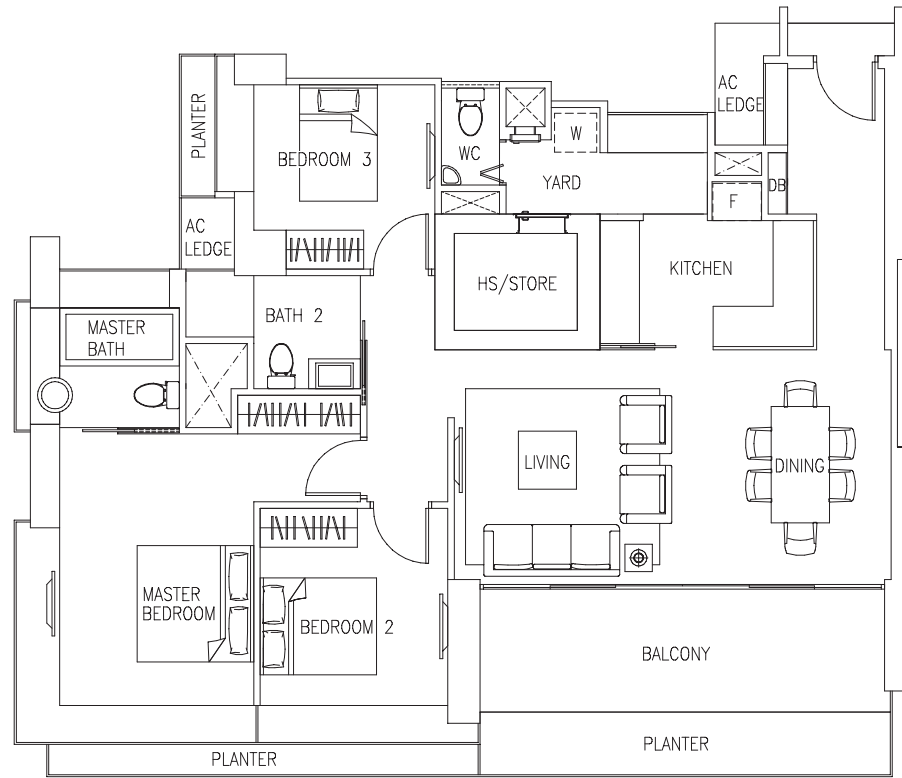
TYPE C1-4

137 sqm (1,475 sq ft)

#41-02 – #44-02*

#41-11 – #44-11

*(Mirror Image)



 BUYCONDO.sg

4-BEDROOM

SOUTH FACING (SENTOSA)

TYPE D1-1

172 sqm (1,851 sq ft)

#08-06 – #11-06

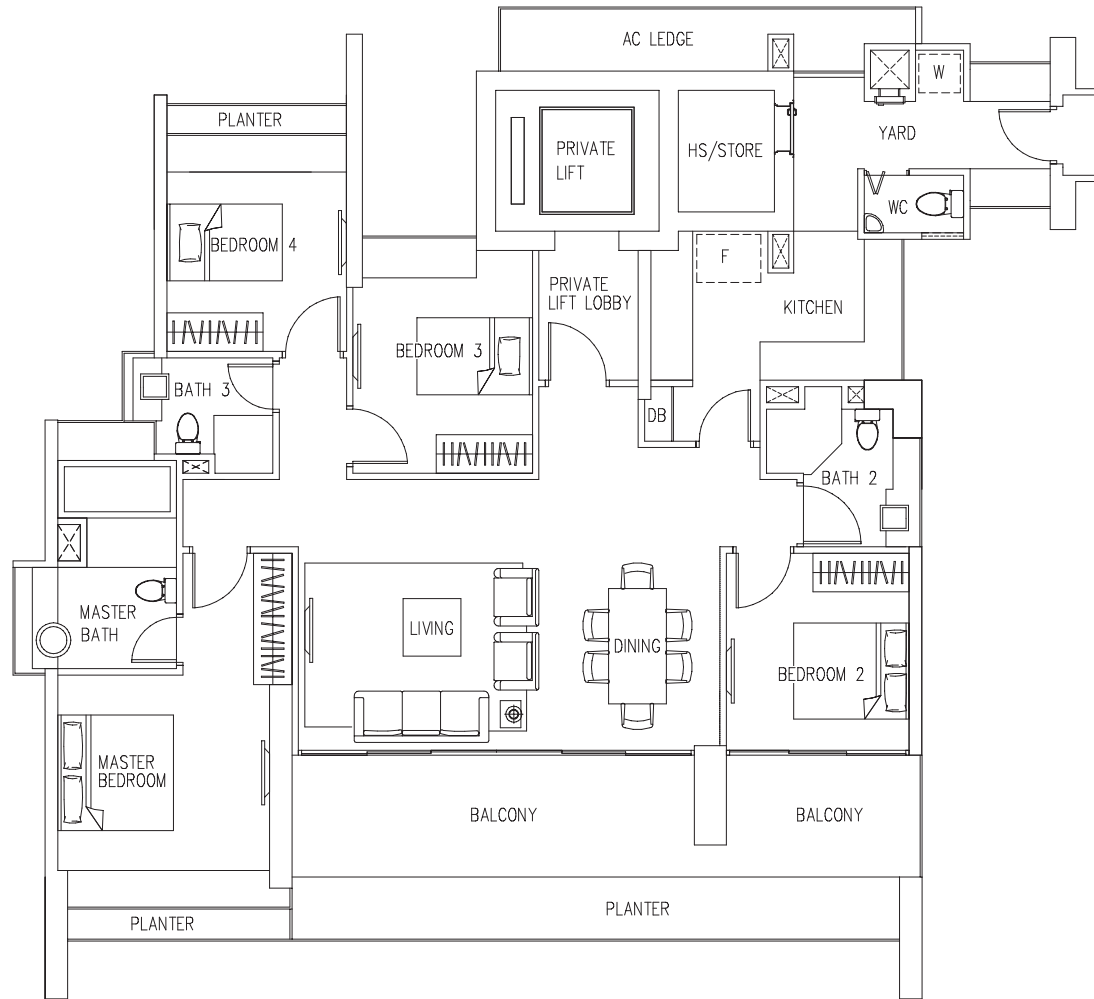
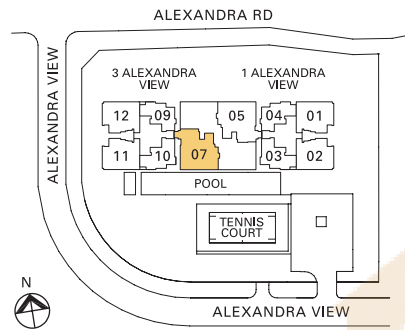
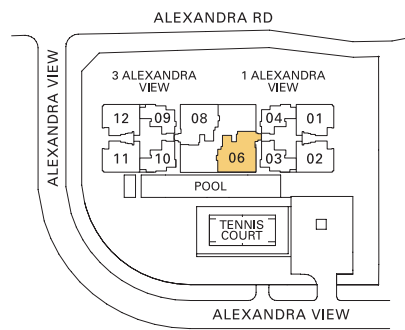
#27-06 – #30-06

#04-07 – #06-07*

#18-07 – #21-07*

#37-07 – #40-07*

*(Mirror Image)



BUYCONDO.sg

TYPE D1-3

167 sqm (1,798 sq ft)

#07-06

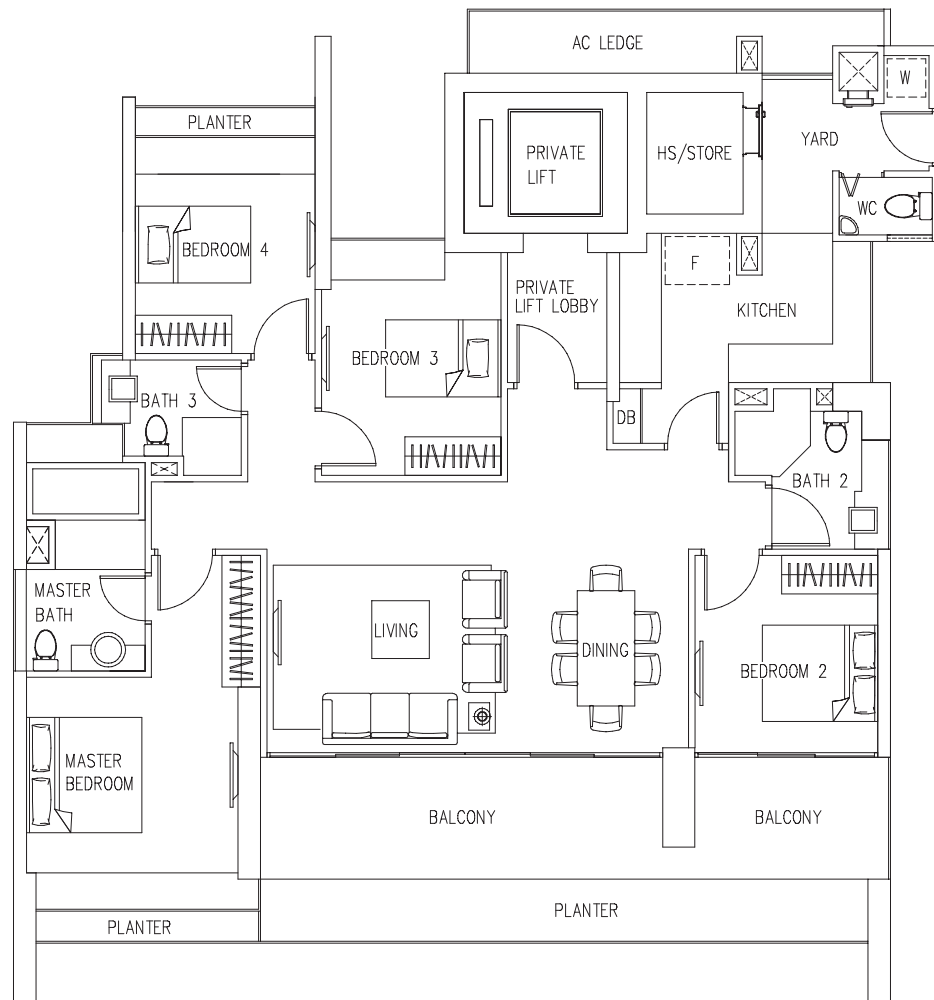
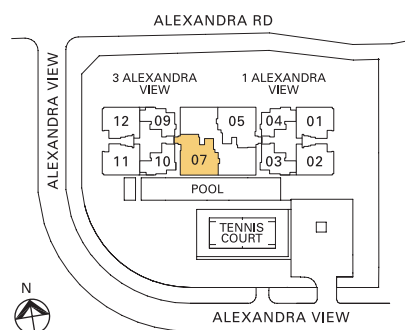
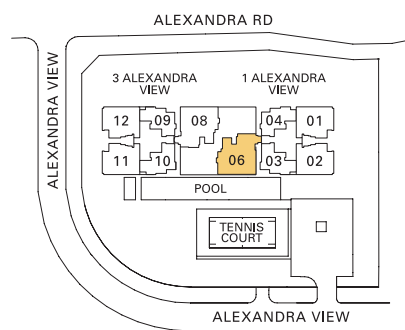
#26-06

#03-07*

#17-07*

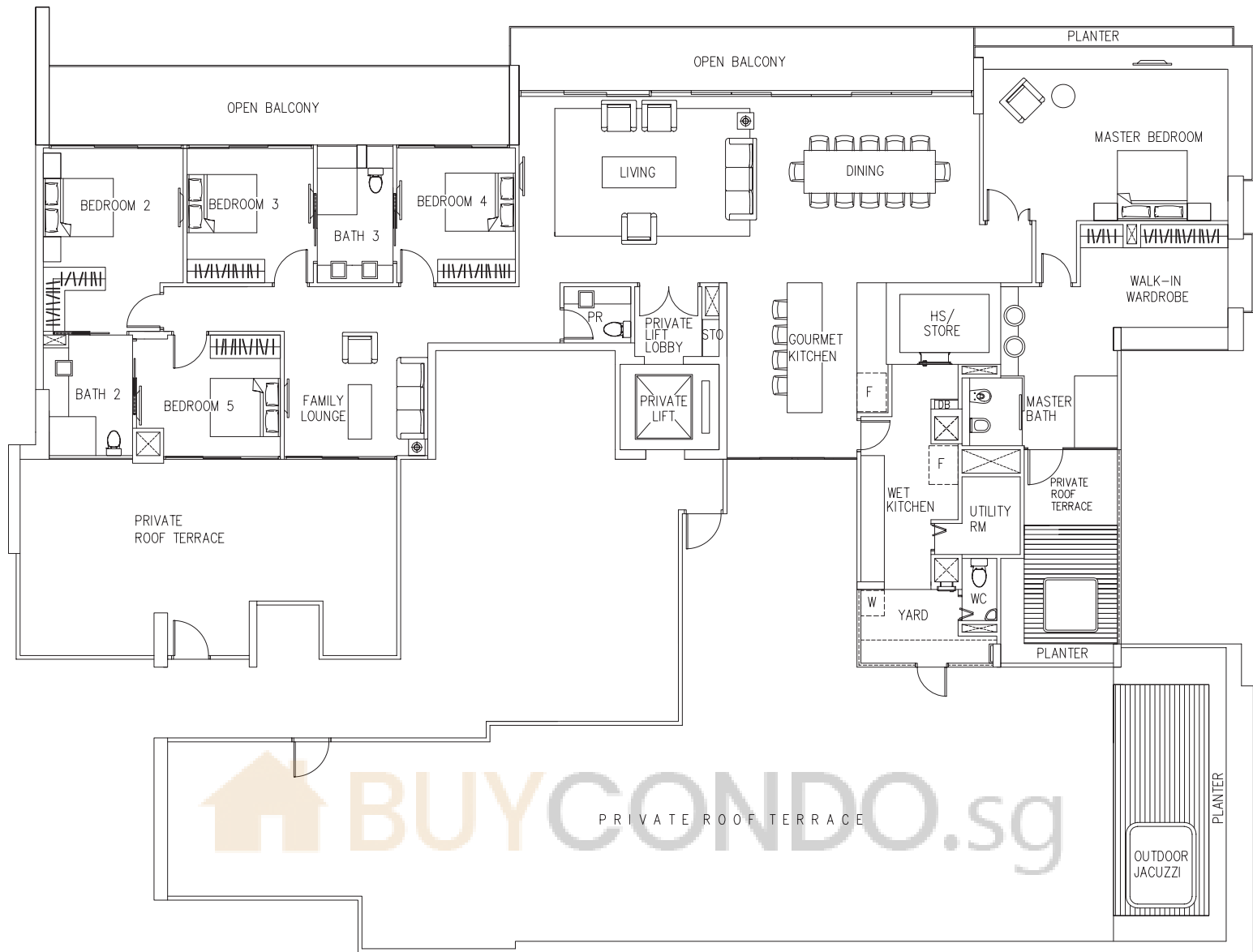
#36-07*

*(Mirror Image)

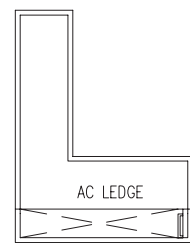


The above plans are not to scale and subject to any amendments as may be approved by the relevant authorities. All apartment areas are approximate of typical plans and are subject to final survey and column sizes may vary. The developer and its agents cannot be held liable for any inaccuracies. All external elevations/facades of the apartment including but not limited to solid walls, sliding or swing glass doors, windows and/or bay windows with fixed glass panels, sliding or casement glass panels, and/or any other features relevant to the facades are positioned, installed and/or subject to random/rhythmic combination of architectural treatments. As such, the external elevations/facades/features/installations are modular and all apartments vary in some way or another.

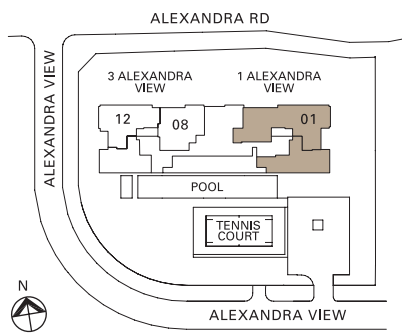
PENTHOUSE



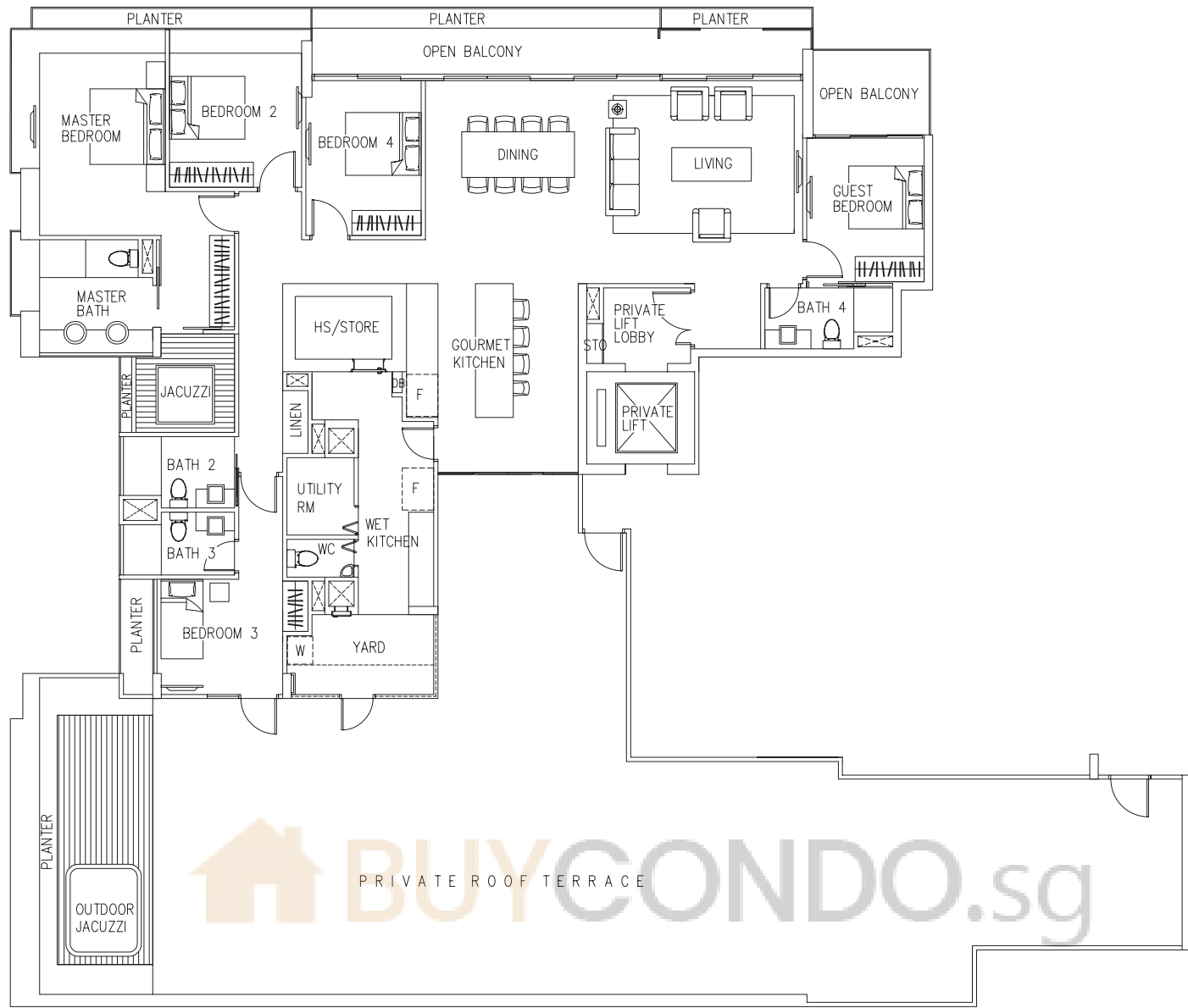
TYPE P1
 586 sqm (6,308 sq ft)
 #45-01



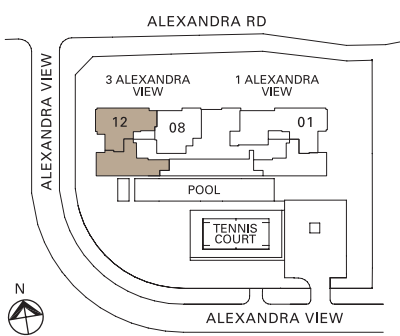
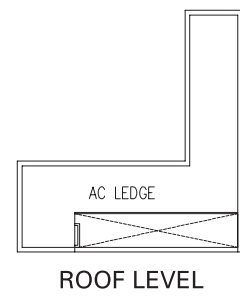
ROOF LEVEL



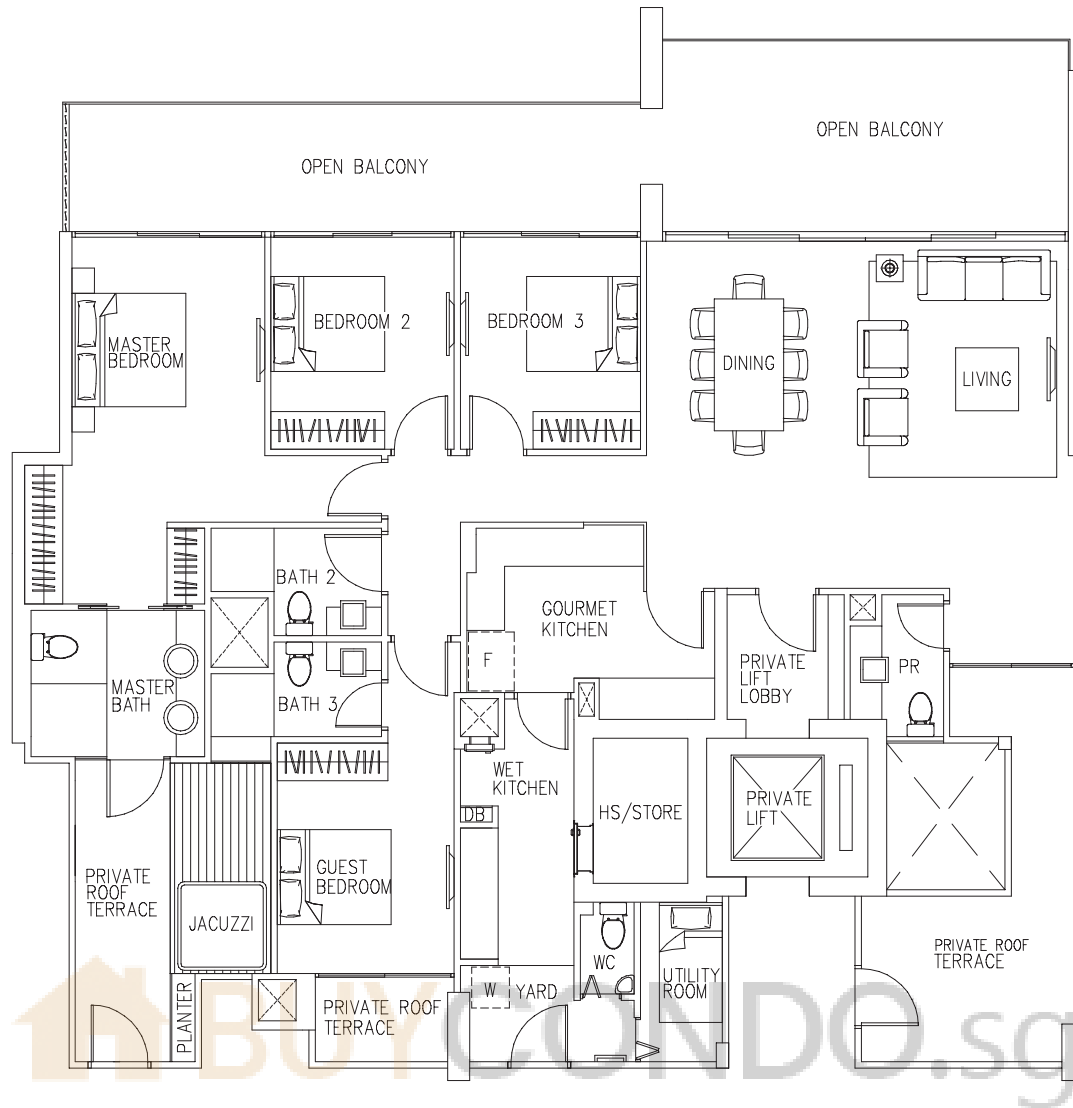
PENTHOUSE



TYPE P2
 450 sqm (4,844 sq ft)
 #45-12



PENTHOUSE



TYPE P3
 238 sqm (2,562 sq ft)
 #45-08

